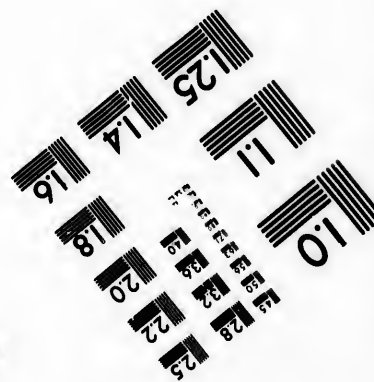
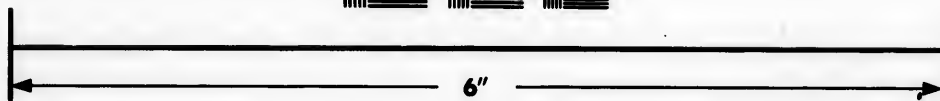
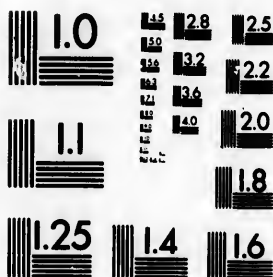


# IMAGE EVALUATION TEST TARGET (MT-3)



Photographic  
Sciences  
Corporation

23 WEST MAIN STREET  
WEBSTER, N.Y. 14580  
(716) 872-4503

1.8 2.0 2.2 2.5 2.8 3.2 3.6 4.0 4.5 5.0 5.6 6.3 7.1 8.0 9.0 10.0 11.2 12.5 14.0 16.0 18.0 20.0 22.5 25.0 28.0 31.5 36.0 40.0 45.0 50.0 56.0 63.0 71.0 80.0 90.0 100.0

**CIHM/ICMH  
Microfiche  
Series.**

**CIHM/ICMH  
Collection de  
microfiches.**



Canadian Institute for Historical Microreproductions / Institut canadien de microreproductions historiques

**© 1985**

1.0 1.2 1.5 1.8 2.0 2.2 2.5 2.8 3.2 3.6 4.0 4.5 5.0 5.6 6.3 7.1 8.0 9.0 10.0 11.2 12.5 14.0 16.0 18.0 20.0 22.5 25.0 28.0 31.5 36.0 40.0 45.0 50.0 56.0 63.0 71.0 80.0 90.0 100.0

# Technical and Bibliographic Notes/Notes techniques et bibliographiques

The Institute has attempted to obtain the best original copy available for filming. Features of this copy which may be bibliographically unique, which may alter any of the images in the reproduction, or which may significantly change the usual method of filming, are checked below.

- ☐ Coloured covers/  
Couverture de couleur
- ☐ Covers damaged/  
Couverture endommagée
- ☐ Covers restored and/or laminated/  
Couverture restaurée et/ou pelliculée
- ☐ Cover title missing/  
Le titre de couverture manque
- ☐ Coloured maps/  
Cartes géographiques en couleur
- ☐ Coloured ink (i.e. other than blue or black)/  
Encre de couleur (i.e. autre que bleue ou noire)
- ☐ Coloured plates and/or illustrations/  
Planches et/ou illustrations en couleur
- ☒ Bound with other material/  
Relié avec d'autres documents
- ☐ Tight binding may cause shadows or distortion  
along interior margin/  
La reliure serrée peut causer de l'ombre ou de la  
distorsion le long de la marge intérieure
- ☐ Blank leaves added during restoration may  
appear within the text. Whenever possible, these  
have been omitted from filming/  
Il se peut que certaines pages blanches ajoutées  
lors d'une restauration apparaissent dans le texte,  
mais, lorsque cela était possible, ces pages n'ont  
pas été filmées.
- ☐ Additional comments:/  
Commentaires supplémentaires:

L'institut a microfilmé le meilleur exemplaire qu'il lui a été possible de se procurer. Les détails de cet exemplaire qui sont peut-être uniques du point de vue bibliographique, qui peuvent modifier une image reproduite, ou qui peuvent exiger une modification dans la méthode normale de filmage sont indiqués ci-dessous.

- ☐ Coloured pages/  
Pages de couleur
- ☐ Pages damaged/  
Pages endommagées
- ☐ Pages restored and/or laminated/  
Pages restaurées et/ou pelliculées
- ☒ Pages discoloured, stained or foxed/  
Pages décolorées, tachetées ou piquées
- ☐ Pages detached/  
Pages détachées
- ☒ Showthrough/  
Transparence
- ☐ Quality of print varies/  
Qualité inégale de l'impression
- ☐ Includes supplementary material/  
Comprend du matériel supplémentaire
- ☐ Only edition available/  
Seule édition disponible
- ☐ Pages wholly or partially obscured by errata  
slips, tissues, etc., have been refilmed to  
ensure the best possible image/  
Les pages totalement ou partiellement  
obscurcies par un feuillet d'errata, une pelure,  
etc., ont été filmées à nouveau de façon à  
obtenir la meilleure image possible.

This item is filmed at the reduction ratio checked below/  
Ce document est filmé au taux de réduction indiqué ci-dessous.

10X	14X	18X	22X	26X	30X
<input type="checkbox"/>	<input type="checkbox"/>	<input checked="" type="checkbox"/>	<input type="checkbox"/>	<input type="checkbox"/>	<input type="checkbox"/>
12X	16X	20X	24X	28X	32X

The copy filmed here has been reproduced thanks to the generosity of:

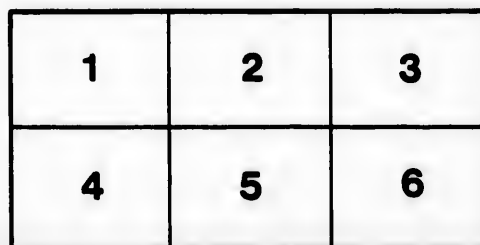
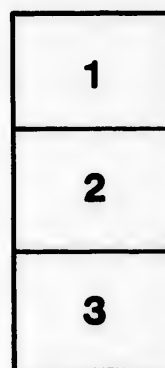
Seminary of Quebec  
Library

The images appearing here are the best quality possible considering the condition and legibility of the original copy and in keeping with the filming contract specifications.

Original copies in printed paper covers are filmed beginning with the front cover and ending on the last page with a printed or illustrated impression, or the back cover when appropriate. All other original copies are filmed beginning on the first page with a printed or illustrated impression, and ending on the last page with a printed or illustrated impression.

The last recorded frame on each microfiche shall contain the symbol  $\rightarrow$  (meaning "CONTINUED"), or the symbol  $\nabla$  (meaning "END"), whichever applies.

Maps, plates, charts, etc., may be filmed at different reduction ratios. Those too large to be entirely included in one exposure are filmed beginning in the upper left hand corner, left to right and top to bottom, as many frames as required. The following diagrams illustrate the method:



L'exemplaire filmé fut reproduit grâce à la générosité de:

Séminaire de Québec  
Bibliothèque

Les images suivantes ont été reproduites avec le plus grand soin, compte tenu de la condition et de la netteté de l'exemplaire filmé, et en conformité avec les conditions du contrat de filmage.

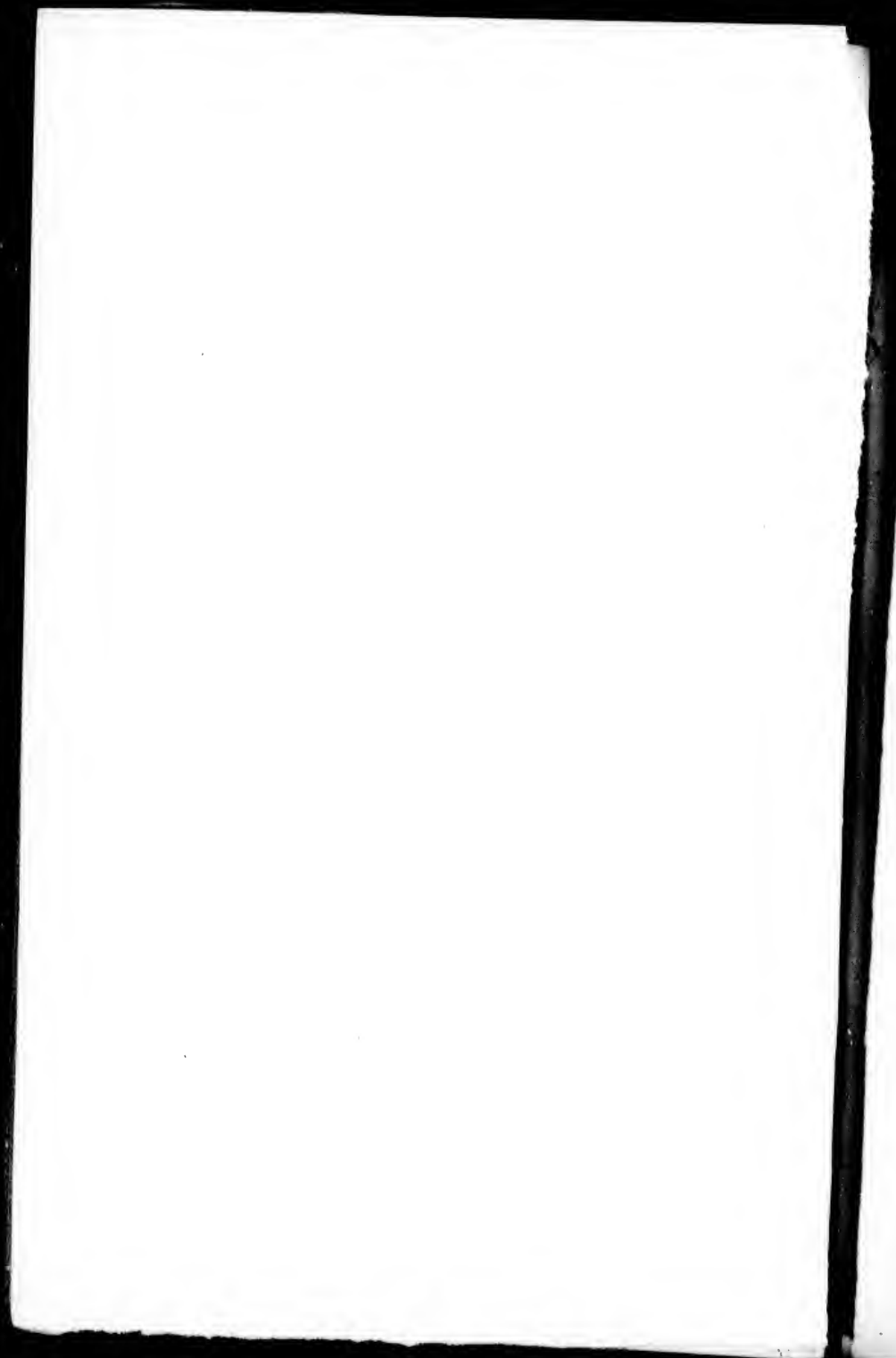
Les exemplaires originaux dont la couverture en papier est imprimée sont filmés en commençant par le premier plat et en terminant soit par la dernière page qui comporte une empreinte d'impression ou d'illustration, soit par le second plat, selon le cas. Tous les autres exemplaires originaux sont filmés en commençant par la première page qui comporte une empreinte d'impression ou d'illustration et en terminant par la dernière page qui comporte une telle empreinte.

Un des symboles suivants apparaîtra sur la dernière image de chaque microfiche, selon le cas: le symbole  $\rightarrow$  signifie "A SUIVRE", le symbole  $\nabla$  signifie "FIN".

Les cartes, planches, tableaux, etc., peuvent être filmés à des taux de réduction différents. Lorsque le document est trop grand pour être reproduit en un seul cliché, il est filmé à partir de l'angle supérieur gauche, de gauche à droite, et de haut en bas, en prenant le nombre d'images nécessaire. Les diagrammes suivants illustrent la méthode.

ails  
du  
odifier  
une  
image

rrata  
o  
pelure,  
n à



219

THE MONTHLY  
RAILWAY & STEAM NAVIGATION  
GUIDE,

For British North America:

CONTAINING

A CORRECT ACCOUNT OF THE HOURS OF DEPARTURE OF THE RAILWAY TRAINS, HER MAJESTY'S MAILS, AND BRITISH AND AMERICAN STEAM-VESSELS;

WITH

A LIST OF PLACES, ETC., TO WHICH TRAVELLERS  
AND VOYAGERS RESORT,

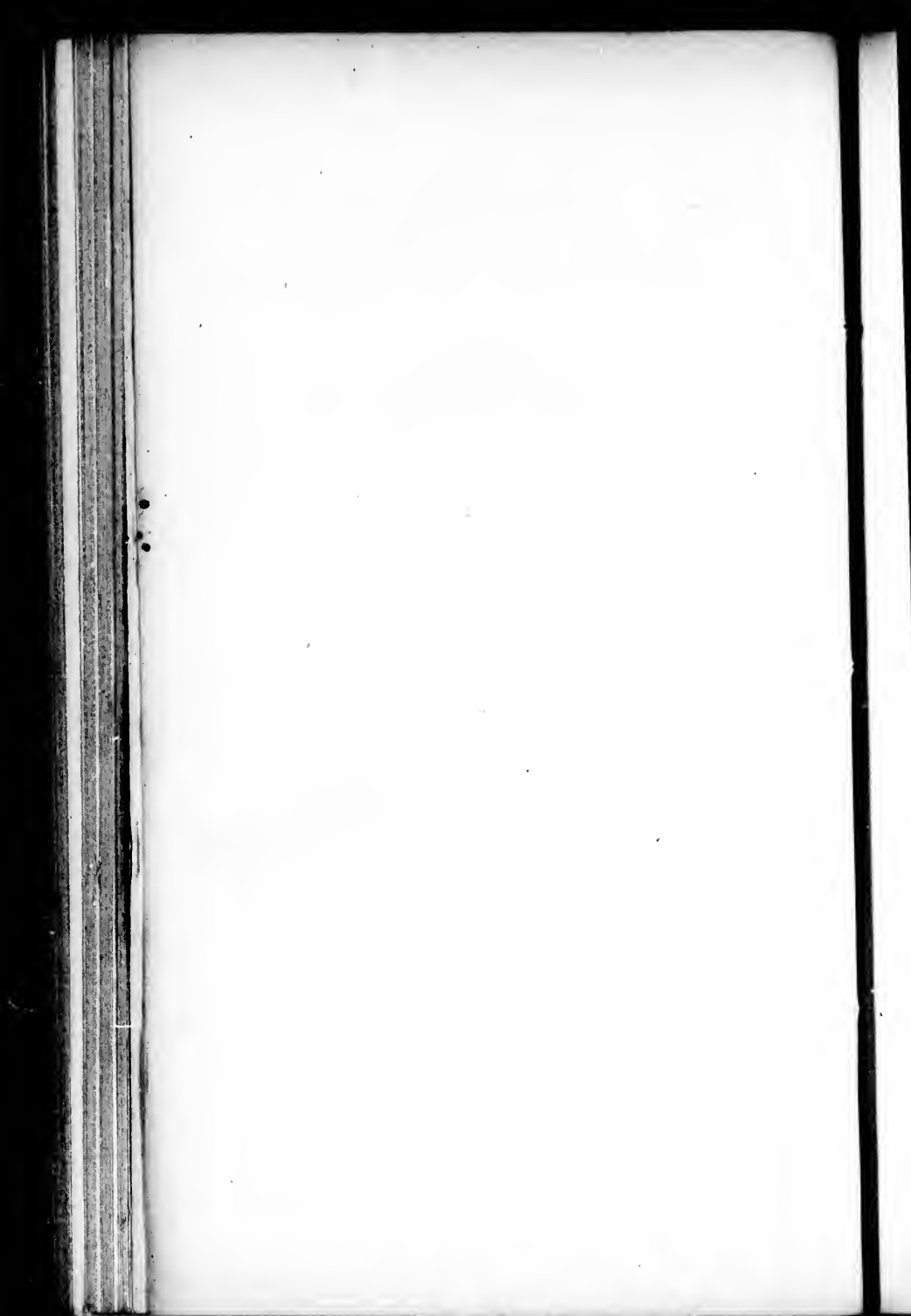
AND OTHER USEFUL INFORMATION.



MONTREAL :

PUBLISHED AT THE OFFICE, ST. FRANÇOIS XAVIER STREET,  
*Where advertisements and communications must be sent.*

PRICE, 7½d.



# THE MONTHLY GUIDE, & c.

## **SOUTHWARD.**

### CHAMPLAIN AND SAINT LAWRENCE RAIL-ROAD.

Opened in 1837. Length 13½ miles. Rail used T.

#### *Hours of Departure.*

FROM MONTREAL.	FROM ST. JOHNS.
8 o'clock, A. M.	8½ o'clock, A. M.
12 Noon, U. S. Mail and Passengers.	1½ o'clock, P. M.
5 o'clock, P. M.	

An *Extra* Train leaves St. Johns every Tuesday, Thursday, and Saturday Evening, at 5 o'clock, P. M., with the Passengers by the Lake Champlain Day Boats.

On Sundays, the Hours of Departure from Montreal are 3 o'clock, P. M., and St. Johns 8 o'clock, A. M.

#### *Fares.*


First Class.....	5s. 0d. or \$1,00
First Class, over and back same or next day.....	7s. 6d. or \$1,50
Second Class.....	2s. 6d. or \$0,50
Second Class, over and back same or next day.....	3s. 9d. or \$0,75

#### *Remarks.*

The distance from Montreal to St. Johns is 24 miles; average time 1½ hours.

Special Tickets may be had at the Office one hour before starting.

Freight to be paid for on delivery.

The wires of the Montreal and Troy Telegraph Company run along the Line of Rail-Road, having Offices in Laprairie and St. Johns.  See end of Work.

At Laprairie the Cars are met by the Steamers of the Company, which immediately convey the Passengers to Montreal.

The Cars are met at St. Johns by the Lake Champlain Boats.



### LAKE CHAMPLAIN BOATS.

Being in connection with the foregoing Railroad.

*From St. Johns to Whitehall, 150 miles.*

The Steamers *Whitehall* and *Burlington*, forming the Evening Line, leave St. Johns the alternate days in every Week (daily) at 2 o'clock, P. M., or on the arrival of the 12 o'clock Train of Cars from Montreal.

And the Steamer *United States* (Day Line) leaves St. Johns, Mondays, Wednesdays, and Fridays, at 5 o'clock, A. M. Passengers for this Boat must leave Montreal the previous evening.

#### *Remarks.*

The charge for Passage is \$2—Meals extra.

Way Passage as nearly in proportion as may be.

☞ This Line of Steamers is met at Whitehall by the Company's Packet-Boats.

#### *Whitehall to Troy, 72 miles.*

At Whitehall the Lake Champlain Steamers are met by the Canal Packets, which leave Whitehall every morning and evening for the Borough, where Passengers take the Cars for Troy, 12 miles.

Passengers by the Morning Line are in time for the Evening Boats to New York, and the Cars for the West.

Passengers by the Evening Line are in time for the Morning Boats to New York, and the Cars for Boston.

#### *Remarks.*

Rail-Road Trains leave upon the arrival of the Cars at Troy for Buffalo and Saratoga Springs.

The fare from Whitehall to Troy is about \$2½—but very often varies.

### TROY TO NEW YORK, 160 MILES. ♦

#### TROY & NEW YORK STEAMBOAT LINE,

Comprising the splendid Steamers *Troy*, *Niagara*, *Empire* and *Columbia*, running as Morning and Evening Boats between Troy, Albany, and New York.

DAILY MORNING LINE—(Sundays excepted,)

*Making all the regular landings on the Hudson River.*

The Steamer *Troy*, Captain A. Gorham, leaves Troy at 6 o'clock, and Albany at 7 o'clock, A. M., Mondays, Wednesdays, and Fridays.

Leaves New York, from foot of Barclay Street, at 7 o'clock, A. M., Tuesdays, Thursdays, and Saturdays.

The Steamer *Niagara*, Captain H. L. Kellogg, leaves Troy and Albany, Tuesdays, Thursdays, and Saturdays.

Leaves New York, from foot of Barclay Street, Mondays, Wednesdays, and Fridays, starting same hours.

The above Boats run through by daylight, affording Passengers an opportunity of viewing the beautiful scenery on the Hudson River.

#### THROUGH EVENING LINE.

The Steamer *Empire*, Captain R. B. Macy, leaves Troy at half-past 5, and Albany at 7 o'clock, P. M., Mondays, Wednesdays, and Fridays.

Leaves New York, from foot of Cortland Street, at 7 o'clock, P. M., Tuesdays, Thursdays and Saturdays.

The Steamer *Columbia*, Captain W. W. Tupper, leaves Troy and Albany, Tuesdays, Thursdays, and Saturdays.

Leaves New York, from foot of Cortland Street, Mondays, Wednesdays, and Fridays, same hours as above.

For Passage or Freight apply at the Office, foot of Barclay and Cortland Streets, New York, or to the Captain on board.

C. H. TUPPER,  
*Agent,*  
New York.

L. H. TUPPER,  
*Agent,*  
Troy.

#### ST. JOHNS TO EASTERN TOWNSHIPS.

##### MERCHANTS' LINE OF STAGES!

From St. Johns, Canada, to the Eastern Townships and Passumpsic Rail-Road Depot at Lebanon, N. H., three times in a Week.

The Stages upon this Line will run as follows, viz. :—

##### Going.

Leave St. Johns, at 7 o'clock, A. M., on the arrival of the Boats from Whitehall, Tuesdays, Thursdays, and Saturdays, *via* Stanbridge, Frelighsburg, Richford, North and South Troy, Barton, Lyndon and Haverhill, to Lebanon, in season for the 11 o'clock, A. M., Cars to the City of Boston.

*Returning.*

Leave Lebanon, Mondays, Wednesdays, and Fridays, at 4 o'clock, A. M., *viâ* Haverhill, Lyndon, Barton, South and North Troy, Richford, Freleighsburch, and Stanbridge, to St. Johns.

The distance between the different Villages through which *this Line* passes is as follows:—

From St. Johns to Stanbridge.....	17 Miles.
From Stanbridge to Freleighsburch.	10 Miles.
From Freleighsburch to Richford...	9 Miles.
From Richford to South Troy.....	20 Miles.
From South Troy to Barton.....	20 Miles.
From Barton to Lyndon.....	20 Miles.
From Lyndon to Haverhill.....	37 Miles.
From Haverhill to Lebanon.....	30 Miles.

*Making in the whole a distance of 163 miles.*

Shorter by 25 or 30 miles than any other route from Montreal to Boston, Mass.

The Public may be assured that this Line will be provided with good Horses and Carriages, and with experienced and careful Drivers.

*Agents.*

L. T. WATSON, St. Johns, Canada.

LEVI KEMP, Freleighsburch.

ALDEN SEARS, Richford, Vt.

GEORGE HOFFMAN, Barton.

E. JOHNSON, South Troy.

I. LUCKIN,

G. W. CLEAVELAND, } *Proprietors.*

I. W. MINER,

## BURLINGTON AND BOSTON

## NEW STAGE ARRANGEMENT,

In connection with the Cars on the Central Railroad.

## THROUGH IN ONE AND A HALF DAYS.

The Mail Stage will leave Burlington daily, (Sundays excepted,) at 1 o'clock, P. M., and arrive at Montpelier at 7 o'clock same Evening, to lodge. Distance 40 miles.

Leave Montpelier next Morning at 5 o'clock, and arrive at Bethel in time to connect with the 11 o'clock Train for Boston, arriving at the latter place at 7 o'clock same Evening. Distance from Montpelier to Bethel, 32 miles.

The Proprietors of the above Lines of Stages are prepared to furnish *Extras* to Parties of Pleasure, on short notice.

Also, to Travellers from Montreal who may arrive at Burlington by the Evening Boats, *Extras* will be furnished for a reasonable compensation, which enable the Traveller to arrive at Montpelier

in time for the regular Morning Stage for Bethel, thus accomplishing the distance between Montreal and Boston in 31 hours.

Morning Stages leave Montpelier daily (Sundays excepted,) for the White Mountains and Portland.

COTTRILL & SHATTUCK,

*Proprietors.*

## ATLANTIC SEABOARD.

### FOR EUROPE.

THE BRITISH AND NORTH AMERICAN  
ROYAL MAIL STEAM-PACKET CO.,

BETWEEN BOSTON AND LIVERPOOL, AND BE-  
TWEEN NEW YORK AND LIVERPOOL,

Calling at Halifax to land and receive Mails and  
Passengers.

AMERICA, Captain C. H. E. JUDKINS.

EUROPA, Captain E. G. LOTT.

HIBERNIA, Captain N. SHANNON.

BRITANNIA, Captain W. J. C. LANG.

NIAGARA, Captain A. RYRIE.

CANADA, Captain W. DOUGLAS.

CAMBRIA, Captain W. HARRISON.

CALEDONIA, Captain J. LEITCH.

ACADIA, Captain J. STONE.

These vessels carry a clear white light at the  
mast head, green on starboard bow, and red on port  
bow.

EUROPA, Captain LOTT, from BOSTON, Wed-  
nesday, August 9th.


AMERICA, Captain C. H. E. JUDKINS, from  
NEW YORK, Wednesday, August 16th.

ACADIA, Captain J. STONE, from BOSTON,  
Wednesday, August 23rd.

Passage Money, \$120.

Freight will be charged on specie beyond an  
amount for personal expenses.

An experienced Surgeon on board.

 All letters and newspapers must pass through  
the Post-Office.

For Freight or Passage, apply to

E. CUNARD, JUN.,

38, Broadway, New York.

---

## OCEAN STEAM NAVIGATION CO.

### U. S. MAIL LINE TO SOUTHAMPTON AND BREMEN.

The Steamers of this Company will sail regularly once a Month, as follows :—

The HERMANN, Captain CRABTREE, from NEW YORK, on the 21st August.

The WASHINGTON, Captain J. JOHNSTON, from BREMEN, on the 15th August.

The WASHINGTON, Captain J. JOHNSTON, from SOUTHAMPTON, on the 20th August.

When the 20th of the month falls on Sunday, the day of sailing from New York will be the 21st.

Passage from New York to Southampton or Bremen, 1st Cabin, \$120; 2nd ditto, \$80.

From Bremen or Southampton to New York, 1st Cabin, \$150; 2nd ditto, \$80.

An experienced Surgeon on board.

For Freight or Passage, apply at the Office of the Ocean Steam Navigation Company, 60, Broadway, New York.

---

### THE STEAMER SARAH SANDS,

W. C. THOMPSON, Commander,

Is intended to sail as follows, in 1848 :—

<i>From New York.</i>	<i>From Liverpool.</i>
Friday, 8th September.	Monday, 7th August.
Friday, 17th November.	Tuesday, 10th October.

From Liverpool the rate of Freight will be four pounds per ton measurement. Cabin Passage from New York \$90.

For Freight or Passage, apply to

ROBERT KERMIT,  
76, South Street, New York.

---

### FOR HAVRE—TO SAIL 5TH OF AUGUST— TOUCHING AT COWES.

#### THE WELL KNOWN STEAMSHIP

“UNITED STATES,”

Captain WM. G. HACKSTAFF,

Burthen 2000 tons, will leave for HAVRE on Saturday, August 5th, and will touch at COWES on the outward passage, to land passengers and letters.

The UNITED STATES will leave HAVRE for NEW YORK on Saturday, 2nd of September.

For Freight or Passage, apply to

C. H. MARSHALL,  
33, Burling Slip, New York.

**WESTWARD.****MONTREAL AND LACHINE RAIL-ROAD.**

Opened in 1847. Length 8 miles. Rail used T.

The Trains of this Company leave as follow :—

**MONTREAL**

At 6 o'clock, A. M., for the Ottawa Mail Boat.  
 At 8½ o'clock, A. M., for the Beauharnois Boat.  
 At 9½ o'clock, A. M., for the Ogdensburgh Boat.  
 At 12½ o'clock, Noon, for the Upper Canada Boat.  
 At 4½ o'clock, P. M., for the Beauharnois Boat.  
 At 6½ o'clock, P. M.

Returning as follows :—

**LACHINE**

At 7 o'clock, A. M., with the Passengers from  
 the Upper Canada & Beauharnois Mail Boats.  
 At 9 o'clock, A. M.  
 At 10½ o'clock, A. M.  
 At 3½ o'clock, P. M., with the Passengers from  
 the Beauharnois Boat.  
 At 5½ o'clock, P. M.  
 At 7 o'clock, P. M., with the Passengers from  
 the Ogdensburgh and Ottawa Boats.

**Remarks.**

On Sundays the Cars leave Montreal at 10½ o'clock, A. M., and Lachine upon the arrival of the Upper Canada Boats.

**Fares.**

1st Class to Lachine.....1s. 10½d.  
 1st Class to Lachine, and back same day...2s. 6 d.  
 2nd Class to Lachine.....1s. 3 d.  
 2nd Class to Lachine, and back same day...1s. 10½d.  
 3rd Class to Lachine.....0s. 7½d.

Children under 12 half the above rates.

Season and Family Tickets, on more modified terms, may be had on application to the Secretary.

This Rail-Road is met by the Royal Mail Line of Steamers.

**LACHINE TO BEAUHARNOIS.**

The Steamer *DeWitt* leaves Lachine for Chateaugay, Beauharnois, &c., &c., on the arrival of the Train from Montreal, at a quarter past 8, A.M. and a quarter past 4 o'clock, P. M.

Arrives at Lachine at 7 o'clock, A. M.

Arrives at Lachine at 3½ o'clock, P. M.

---

**MONTREAL TO KINGSTON, 199 MILES.**


---

**ROYAL MAIL STEAMERS!!**

PASSPORT (New Iron Steamer) Capt. BOWEN.  
 HIGHLANDER.....Capt. STEARNS.  
 CANADA.....Capt. LAWLESS.  
 HENRY GILDERSLEEVE...Capt. MAXWELL.

Passengers by this Line leave Montreal every Week Day, at 12 o'clock, and on Sundays, at 10, by the Rail-Road Cars, for Lachine, where they take one of the above splendid Steamers for Kingston, calling at Beauharnois—

Coteau-du-Lac—40 miles from Montreal;  
 Cornwall—81 miles from Montreal;  
 Williamsburg—92 miles from Montreal;  
 Matilda—112 miles from Montreal;  
 Prescott—131 miles from Montreal;  
 Ogdensburg—131 miles from Montreal;  
 Brockville—143 miles from Montreal; and  
 Gananoque.

---

*Remarks.*

Passage to Kingston occupies about 26 hours.

---

*Fares.*

To Kingston .....	\$ 6
To Toronto and Hamilton.....	\$10
To Niagara.....	\$11
To Buffalo.....	\$11½

Meals included.

This Line of Steamers is met by the Royal Mail Line on Lake Ontario.

---

**LAKE ONTARIO.**


---

**MONTREAL TO NIAGARA FALLS AND BUFFALO.**

THROUGH IN 54 HOURS.

The New Daily Line of Steamers, *British Empire*, and *British Queen*, leave Lachine daily, at half-past 10 o'clock, A. M., for Prescott and Ogdensburg, touching at the intermediate Ports; and on their arrival meet the United States Mail Steamers on Lake Ontario,—calling at Morristown, Brockville, Alexandria Bay, French Creek, Kingston, Sackett's Harbour, Oswego, Rochester, to Lewiston, in connection with the Rail-Road to Niagara Falls and Buffalo, and the Steamer daily from Lewiston to Hamilton.

---

*Remarks.*

Rail-Road Cars, in connection with the above Boats, leave Montreal at 9½ o'clock, A. M.

Tickets, for any of the above places, can be had at the Office, No. 24, McGill Street.

### KINGSTON TO TORONTO, HAMILTON, NIAGARA, &c., &c.

The Steamers of this Line leave as follow:—

The *Princess Royal* Kingston for Toronto on Mondays and Thursdays, at 5, P. M., on the arrival of the River Mail Steamer; and leaves Toronto for Niagara, Queenston, and Lewiston, at 2, P. M., on Tuesdays and Fridays.

The *Magnet* Kingston on Tuesdays and Fridays for Toronto and Hamilton, at 5, P. M., on the arrival of the River Mail Steamer.

The *City of Toronto* Kingston for Toronto on Wednesdays and Saturdays, at 5, P. M., on the arrival of the River Mail Steamer; and leaves Toronto for Niagara, Queenston, and Lewiston, at 2, P. M., on Mondays and Thursdays.

#### Fare.

\$4 to Toronto—\$½ extra for each berth in a State Room—Meals included.

#### Remarks.

The rate of Fare may vary, according as the Proprietors may decide.

Travellers will always find a Steamer leaving Toronto for Hamilton and Niagara daily. Fare about \$1½.

### TORONTO TO HAMILTON, 45 MILES.

The Steamer *Eclipse* will (weather permitting) leave Hamilton for Toronto every morning, (Sunday excepted,) at half-past 7 o'clock. Will leave Toronto for Hamilton, at 2 o'clock, P. M.

#### Remarks.

Fare—One dollar and a half.

The time occupied is about 4 hours.

### TORONTO TO NIAGARA, 55 MILES.

The Steamer *Chief Justice Robinson*, Captain James Dick, will, until further notice, leave Toronto for Niagara, Queenston and Lewiston, every morning, (Sunday excepted,) at half-past 7 o'clock. Returning, will leave Lewiston, touching at Queenston at 1, P. M., and Niagara at 2, P. M.

### TORONTO TO ROCHESTER.

The Steamer *America* will, until further notice, leave Toronto for Rochester, touching at Cobourg and intermediate Ports, (weather permitting,) every Wednesday and Saturday Morning, at 11 o'clock. Will leave Rochester Landing for Toronto every Monday and Thursday Evening, (weather permitting,) touching at Cobourg and intermediate Ports.



---

HAMILTON, PORT DALHOUSIE, NIAGARA,  
QUEENSTON, YOUNGSTOWN, AND  
LEWISTON.

The Steamer *Telegraph*, Captain John Masson, will commence running on the 10th April, and continue to leave Hamilton daily, at half-past 6, A.M., for Youngstown, Niagara, Lewiston and Queenston, and arrive in time for the Rail-Road Cars for the Falls of Niagara and Buffalo, and for the American Steamers for Rochester, Oswego, Syracuse, New York, Montreal and Quebec.

Passengers for any of the above places will find this an expeditious, cheap and agreeable route.

The *Telegraph* will leave Lewiston every Afternoon, at 2 o'clock, for Hamilton, touching at the intermediate Ports.

The *Telegraph* touches at Port Dalhousie, Morning and Evening, where the Carriages are in attendance to convey Passengers to St. Catharines, &c.

---

NOTICE TO SHIPPERS AND PASSENGERS  
FOR THE BAY OF QUINTE.

The Steamer *Empire*, Captain Bonten, Jun., will ply regularly, for the remainder of the Season, between Montreal and the River Trent, leaving our Wharf every Monday Evening, at 7 o'clock, calling at Prescott, Brockville, Gananoque, Kingston, Bath, Fredericksburgh, Adolphustown, Napanee, Picton, and Belleville.

For Freight or Passage, apply to  
DONALD MURRAY & Co.,  
Agents.

Montreal, 1848.

---

ROUTE BY THE OTTAWA RIVER.

---

LACHINE TO BYTOWN, 132 MILES.

---

OTTAWA RIVER PASSAGE STEAMERS.

*Through from Montreal to Bytown in Daylight.*

On and after Monday next, the Passage Boats on this Line will run Daily (Sundays excepted.)

The splendid Steamer *Porcupine* will leave Bytown at 6, A. M. Passengers will reach Lachine in time for an Evening Train, and probably arrive at Montreal in time to take the Steamer for Quebec.

The *Oldfield* will leave Lachine immediately after the arrival of the 6, A. M., Train from Montreal, and Passengers will arrive at Bytown about 8, P. M.

---

BYTOWN TO CALEDONIA SPRINGS.

---

STAGE NOTICE.

Stages leave the Canada House daily, (Sunday excepted,) at 9 o'clock, A. M., with Passengers for Montreal,—and at 1, P. M., with Passengers for Bytown.

Passengers from Montreal reach the Springs in time for dinner at 5 o'clock, P. M.

Passengers from Bytown reach the Springs in time for dinner at 2 o'clock, P. M.

Caledonia Springs, 1843.

---



---

BYTOWN TO KINGSTON, 130 MILES.

The Steamer *Beaver* plies between Bytown and Kingston, and *vice versa*, twice a Week, as follows:

Leaving Bytown every Wednesday and Saturday Evening, at 9, P. M., immediately after the arrival of the Stage and Steamers, and arrive in Kingston at 12 o'clock, Noon, next day.

Leaving Kingston Tuesdays and Fridays, after the arrival of the Lake Mail Steamers, at 9 o'clock, A. M., and arrive at Bytown at 12 o'clock, Noon, next day.

*Remarks.*

By this arrangement a daylight view may be had of all the best scenery and principal locks and villages on the Line.

---



---

KINGSTON AND WOLF ISLAND STEAM-FERRY.

Times of Starting for Steam-Ferry, commencing Monday Morning, 12th June, 1848,

*Leaving Kingston as follows:—*

- 1st Trip at 6 o'clock, A. M.
- 2nd Trip at 10 o'clock, A. M.
- 3rd Trip at 2 o'clock, P. M.
- 4th Trip at 5 o'clock, P. M.

*Leaving Wolf Island as follows:—*

- 1st Trip at 7 o'clock, A. M.
- 2nd Trip at 11 o'clock, A. M.
- 3rd Trip at 3 o'clock, P. M.
- 4th Trip at 6 o'clock, P. M.

### ROYAL MAIL LINE OF STAGES BETWEEN KINGSTON AND BRIGHTON.

The Subscriber respectfully intimates to the Public, that he has commenced running a Line of Stages between Kingston and Brighton, *viâ* the Front Road, through Ernestown, Bath, Fredericksburgh, and Adolphustown, crossing over at the Stone Mills to the Prince Edward District; leaving Kingston every evening, (Sunday excepted,) at 5 o'clock, or immediately after the arrival of the Mail Steamer from Montreal, and leaving Brighton every morning, (Sunday excepted,) at 8 o'clock.

For Seats apply to the Proprietor at Kingston, and to J. Lockwood, Esq., Brighton.

⚡ All Luggage at the risk of the owner, unless booked and paid for.

GEORGE MINK,  
*Proprietor.*

### STEAMBOAT BRANTFORD,

WILLIAM D. SOULES, Master.

The Steamboat *Brantford* has been fitted up in a superior style, for the comfort and accommodation of travellers, and will commence her regular trips on Thursday, the 20th instant, running between Dunnville and Brantford, touching at all intermediate Ports. Arrangements have also been made to run in connection with the staunch Steamer *Experiment*, plying between Buffalo and Port Stanley, calling regularly at Dunnville, thus enabling travellers to leave Brantford in the morning and arrive in Buffalo the same day. Passengers will find that this route has every advantage over any other, both for time and cheapness—fare from Brantford to Buffalo amounting to only \$2—and also the pleasure of travelling through one of the finest sections of Canada West. The Steamer *Brantford*

Leaves Brantford Landing on Mondays and Thursdays.

Leaves Dunnville on Wednesdays and Saturdays.

Leaves Dunnville for Caledonia on Tuesdays and Fridays, returning the same day.

*Fare through \$2.*

For Freight or Passage, apply to

H. YARDINGTON, and } Brantford.

A. BRADLEY, }  
GEORGE J. SMITH, New Port.

R. MEAD, Caledonia.

Mr. WALTERS, Cayuga.

WM. S. BUCKWELL, and } Dunnville.

Mr. WIGGINS,

Or to the Captain on board.

*N. B.*—The *Brantford* arrives in Caledonia in time for the Port Dover and Hamilton Stages, which reach Hamilton in time for the afternoon Boats to Toronto. Fare from Brantford Landing to Hamilton, by the way of the Grand River and Caledonia, 3s. 9d.

### OLD LINE COMMENCED RUNNING MORNING AND EVENING.

*Accommodation Stage* leaves Brantford every morning, (Sundays excepted,) at 8 o'clock, A. M., for Hamilton, in time for the 2 o'clock Steamer for Toronto, and in time for the Stage at Hamilton, St. Catharines, Niagara Falls, Chippewa, in connection with the Steamer *Emerald*, for Buffalo.

*Accommodation Stage* leaves Hamilton, after the arrival of the Steamer from Toronto, and the Stages from St. Catharines at 2, P. M., for Brantford.

*Mail Stage* leaves Brantford every day for Hamilton at 10, P. M., and for London, Sandwich, Detroit, at 11, P. M., Port Sarnia, St. Thomas. *Mail Stage* for Simcoe every day, Mondays excepted.

*Mail Stage* leaves Hamilton after the arrival of the Steamer *Eclipse* for Brantford, Woodstock and London.

Fare reduced to Buffalo, \$3.25.

*N. B.*—All baggage at the risk of the owners, unless booked and paid for. Passengers will be called for at any of the Public Houses within the Corporation of Brantford, or at their residences.

*Extras* to any part of the country, by applying at the Stage Office.

GEORGE BABCOCK,  
Proprietor.

### MONTREAL AND CORNWALL.

#### NEW BOAT AND NEW LINE!

The splendid New Steamer *George Frederick* will ply, the remainder of the Season, between the Ports of Montreal and Cornwall, making two trips each Week, viz.:—on her Upward trip will leave Montreal, Canal Basin, every Tuesday and Friday, at 3 o'clock, P. M., touching at all the intermediate Ports from thence to Cornwall, viz.:—Coteau-du-Lac, St. Anicet, Lancaster, St. Regis, and thence to Cornwall.

Downwards—Will leave Dundee every Monday and Thursday, at 6 o'clock, A. M., and will call at Lancaster, St. Anicet, Coteau-du-Lac, and thence direct to Montreal, in time for the departure of the Quebec Daily Line of Steamboats.

The *George Frederick* is well finished, and furnished for the accommodation of the Travelling Public. For further information, apply to

C. H. SEE,  
Canal Basin, Montreal.

### DAILY LINE BETWEEN WINDSOR, AMHERSTBURG AND CHATHAM.

Stages will run, during the season of navigation, as follows:—

Leave Windsor (opposite Detroit) every morning, at 6 o'clock, for Amherstburg. Returning, leave Amherstburg every afternoon, at 4 o'clock, for Windsor.

Leave Windsor for Chatham every Sunday, Monday, Wednesday and Friday mornings, at 6 o'clock. Returning, leave Chatham every Sunday, Tuesday, Thursday and Saturday mornings, at 6 o'clock.

This arrangement, in connection with the Stage from Chatham East, and alternate days to the Steamboat *Brothers*, from Chatham to Windsor, forms a Daily Line, complete from Amherstburg to Hamilton and Niagara Falls.

The Public are informed that the entire Route is well stocked, good covered carriages, and through by daylight.

#### Fares.

From Windsor to Chatham, and *vice versa*...\$2.00  
From Windsor to Amherstburg.....\$0.50

CARTER & ALMY, *Proprietors*.  
JOHN EDWARDS, *Agent*,  
Detroit, Michigan.

### LAKE ERIE.

#### WESTERN TRANSPORTATION CO.

The fast-sailing Steamer *Canada*, Captain Van Allen, will leave Detroit for Buffalo during the present Season every Monday and Thursday Evening, at 6 o'clock, through in 22 hours, arriving in time for the Eastern Cars.

Merchants in Canada West will find it to their advantage to forward Goods from New York by this Line to Amherstburg and Windsor.

Goods for Chatham, Sarnia, and Lake Huron, can be forwarded from Windsor daily.

Freight at current rates.

#### Agents.

G. W. ENSWORTH, 117, Broad Street, New York.  
J. MYRET & Co., Foot Washing Street, Buffalo.  
T. & T. PARK, Amherstburg.  
CHARLES HUNT, Windsor.  
MR. BISSELL, Detroit, Michigan.

---

**BETWEEN BUFFALO & PORT STANLEY.**

The Steamer *London*, Captain G. Willoughby, will run this Season as follows:—

Leaves Buffalo every Monday, Wednesday and Friday, at half-past 2, P. M.

Arrives at Port Stanley every Tuesday, Thursday and Saturday, at half-past 7, A. M.

Returning—Leaves Port Stanley every Tuesday, Thursday, and Saturday, at half-past 2, P. M.

—  
*Between Buffalo and Detroit, through in 21 hours.*

The Steamer *Canada*, Captain H. Van Allen, leaves Buffalo for Detroit every Wednesday and Saturday, at 9, A. M., and Detroit for Buffalo every Monday and Thursday, at 7, P. M.

OLIVER T. MACKLEM,  
*Managing Owner.*

---

**LAKE HURON.**

—  
NEW ARRANGEMENT FOR AUGUST.

---

**WEEKLY TRIPS.**

The Steamer *Gore* will, for the Month of August, 1848, leave Sturgeon Bay every Tuesday Morning, at 4 o'clock, for Owen Sound, Manitoulin, Saint Josephs, Bruce Mines, and Sault St. Marie.

Returning—Will leave Sault St. Marie every Friday Morning, calling at the intermediate places.

---

---

**EASTWARD.**

---

**MONTREAL TO QUEBEC, 180 MILES.**

---

**OPPOSITION LINE.**

The Steamer *Lady Elgin* leaves Montreal Mondays, Wednesdays, and Fridays, at 5 o'clock, P.M.

Returning—Leaves Quebec Tuesdays, Thursdays, and Saturdays.

Calls at Sorel, Port St. Francis, Three Rivers, and Batiscan.

Fares, 7s. 6d., meals included.

---

**Remarks.**

The *Lady Elgin* is a new Steamer, and but lately put on this Line.

Travellers would do well to take the above Steamer, the fares being less.

---

### MONTREAL AND QUEBEC STEAMBOAT COMPANY.

The Steamers of this Company leave daily (Sunday excepted) for Quebec, as follows :—

Montreal, 6 o'clock, P. M.

Quebec, 5 o'clock, P. M.

Fares by Steamers *Lord Sydenham* and *Montreal* 15s., meals included.

#### Remarks.

The Steamer *Queen*, belonging to this Company, leaves Montreal Mondays, Wednesdays, and Fridays. Returning—Leaves Quebec Tuesdays, Thursdays, and Saturdays.

Fare—10s., meals included.

The above Steamers call at Sorel, Port St. Francis, and Three Rivers.

---

### PLEASURE TRIP TO VARENNES.

Till contrary notice, the Steamer *Ste. Helene* will leave Montreal every Sunday, weather permitting, at 1 o'clock, P. M., precisely, for a Pleasure Trip to Varennes, and will be back early on the same Evening; stopping at Boucherville on her way down and up.

Charge, to and from, 1s. 3d.

---

### VARENNES SPRINGS.

The Subscriber begs to inform the Public, that, on and after the 24th July, during the Season, the Steamer *Oregon*, Captain St. Louis, will leave the New Market Wharf every Morning, at 9 o'clock, for Varennes, and will return each day, leaving Varennes at 5, P. M.

A. ST. LOUIS.

N. B.—For the convenience of parties visiting the Springs, Madame St. Julien will have Omnibuses in waiting to convey them to and from, free of charge.

---

### QUEBEC TO RIVER DU LOUP.

The Steamers *Neptune* or *St. George* will leave the India Wharf, Quebec, for River du Loup, every Saturday Morning, at 8 o'clock, precisely, until further notice. Will remain all Sunday at River du Loup, and return to Quebec on Monday, in time for the Montreal Steamer.

For Passage, apply to

GEORGE DEMPSTER.

Montreal, 1848

---

**MONTREAL TO HALIFAX.**

---

The nearest and most expeditious route is that by Boston and New York, either taking the **ROYAL MAIL STEAMERS**, or **PACKETS**, from which Ports numbers of the latter are constantly departing.

Passengers can also go *viâ* Quebec, but this is long and tedious.

---

**HALIFAX TO ST. JOHN, N. B.**

The Steamer *Herald* will leave Halifax every Thursday, for the Season, commencing on the 18th May, for St. John, New Brunswick, calling at Lunenburg, Liverpool, Yarmouth and Brier Island.

The *Herald* will sail from St. John, for Halifax, on the 15th May, touching at the above Ports.

Rates of Passage and Freight made known on application at the Office of

ARCHIBALD SCOTT,  
No. 30, Bedford Row, Halifax.

---

**TO SYDNEY AND NEWFOUNDLAND.**

---

**STEAMSHIP UNICORN.**

This splendid Steamer having, during the past Winter, at Greenock, undergone thorough repair in her hull, refitted Engines, and received new Boilers, will proceed to Sydney and Newfoundland, with Her Majesty's Mails, on arrival of the Royal Mail Steamships from Boston on Fridays, and will continue for the Season to depart every second Friday.

Superior accommodation for Passengers.

The vessel will be cleared at the Customs on Thursdays, and no Freight, Packet, or Parcel received on the day of sailing.

Passengers to be on board half an hour before the Mails, or run the risk of losing their Passage; and no Freight or Luggage will be received on board without the Agent's ticket.

Apply to

ARCHIBALD SCOTT,  
*Agent*,  
No. 30, Bedford Row, Halifax.



## 20 MONTREAL TELEGRAPH COMPANY.

### MONTREAL TELEGRAPH COMPANY.

THIS Line of Telegraph runs East and West. East as far as Quebec, and West to Toronto, where it is joined by the Line in connection with the Telegraph between Buffalo and Troy.

Messages can be sent by this Line to any Towns on the route mentioned as far as New York, being paid at the Montreal Office.

Office, Odd Fellows' Hall, Great St. James Street.

#### RATES

For the transmission and writing out of every Ten Words, or less, exclusive of the Address and Signature:—

For any distance under 100 miles, 1s. 3d.—Over 100 and under 200, 1s. 10½d.—Over 200 miles, and under 400, 2s. 6d.—Over 400 miles, 3s. 9d.—For every Ten Words exceeding 100, the above rates will be reduced one-third. Payment in all cases to be made in advance.

TABLE OF DISTANCES.

	Quebec.	Three Rivers.	Berthier.	Montreal.	Corwall.	Prescott.	Brockville.	Kingston.	Belleville.	Cobourg.	Port Hope.	Oshawa.	Toronto.
Quebec.....	0	90	135	180	262	311	323	379	438	484	491	521	556
Three Rivers....	90	0	45	90	172	221	233	289	349	394	401	431	466
Berthier.....	135	45	0	45	127	176	188	244	303	349	356	386	421
Montreal.....	180	90	45	0	82	131	143	199	258	304	311	341	376
Corwall.....	262	172	127	82	0	49	61	117	176	222	229	259	294
Prescott.....	311	221	176	131	49	0	12	68	127	173	180	210	245
Brockville.....	323	233	183	143	61	12	0	56	115	161	168	198	233
Kingston.....	379	289	244	199	117	68	56	0	59	105	112	142	177
Belleville.....	438	349	303	258	176	127	115	50	0	46	53	83	118
Cobourg.....	484	394	349	304	222	173	161	105	46	0	7	37	72
Port Hope.....	491	401	356	311	229	180	168	112	53	7	0	30	65
Oshawa.....	521	431	386	341	259	210	198	142	83	37	30	0	35
Toronto.....	556	466	421	376	294	245	233	177	118	72	65	35	0

Montreal and Troy Telegraph Company's Office,  
Odd Fellows' Hall, Great St. James Street.

TABLE OF COACH, CAB AND CALECHE FARES.

COACHES drawn by Two Horses—	From Steamboat Landing (and vice versa) to any place within the				From any of the Stands (and vice versa) to any place within the				By THE HOUR.
	1st Div	2d Div	3d Div	1st Div	2d Div	3d Div	1st Div	2d Div	
One Person.....	s. d. 1 3	s. d. 1 10	s. d. 2 6	s. d. 1 3	s. d. 1 10	s. d. 2 6	s. d. 1 3	s. d. 1 10	5s. for the first hour, and 3s. 9d. for each subsequent hour.
Two Persons.....	2 0	2 6	3 0	2 0	2 6	3 0	2 0	2 6	2s. for the first, and 1s. 6d. each subsequent hour.
Three Persons.....	0 6	0 6	0 6	0 6	0 6	0 6	0 6	0 6	1s. 8d. for the first, and 1s. 3d. each subsequent hour.
Each additional Person....	0 10	1 0	1 3	0 7½	0 10	1 0	0 10	1 0	
CABS—One Person.....	1 3	1 6	1 9	0 10	1 3	1 6	0 10	1 3	
Two Persons.....	1 8	1 10	2 0	1 3	1 6	1 10	1 3	1 6	
Three Persons.....	0 4	0 4	0 4	0 4	0 4	0 4	0 4	0 4	
Each additional Person....	0 7½	0 10	1 4	0 6	0 9	1 0	0 6	0 9	
CALECHES—One Person...	1 0	1 2	1 4	0 9	1 0	1 3	0 9	1 0	
Two Persons.....	1 3	1 6	2 0	1 0	1 3	1 6	1 0	1 3	
Three Persons.....	0 3	0 3	0 3	0 3	0 3	0 3	0 3	0 3	
Each additional Person...	0 3	0 3	0 3	0 3	0 3	0 3	0 3	0 3	

## CITY OMNIBUSES.

## FARE 3D.

The Omnibuses are now running every Half Hour, from half-past 6, A.M., to half-past 7, P.M., from the Terminus of the Lachine Rail-Road to the Longueuil Ferry, passing through St. Antoine, McGill, St. Paul, Great St. James, Notre Dame, and St. Mary Streets.

Passengers can be taken up, or set down, at any point on the Route, by intimating their wish to the Driver. The charge, in no instance, to exceed 3d.

---

PLACES OF AMUSEMENT, INTEREST,  
&c., IN THE METROPOLIS.

† THEATRE-ROYAL—(Open every Evening)—  
Dalhousie Square.

† NATURAL HISTORY SOCIETY ROOMS—Little  
St. James Street.

† TOWER OF NOTRE DAME CATHEDRAL—  
(Open Daily.)

• MILITARY ARSENAL—Island of St. Helens.

† CHRIST CHURCH—Notre Dame Street.

• MERCHANTS' EXCHANGE—Odd Fellows' Hall,  
Great St. James Street.

† ST. PATRICK'S CHURCH—Lagauchetiere  
Street.

† UNIVERSITY OF MCGILL COLLEGE—Sher-  
brooke Street.

• HOUSES OF LEGISLATIVE ASSEMBLY AND  
COUNCIL—Commissioners' Street.

• MONTREAL HOSPITAL—Dorchester Street.

† MILLARD'S BOWLING SALOON—St. Joseph  
Street.

† THE PARISH CHURCH OR CHURCH OF NOTRE  
DAME—Notre Dame Street.

† ST. JAMES, OR THE BISHOP'S CHURCH—St.  
Denis Street.

† THE BONSECOURS CHURCH—St. Paul Street.

† THE RECOLLET CHURCH—Notre Dame  
Street.

† BONSECOURS MARKET—St. Paul Street.

• THE BAPTIST COLLEGE—Dorchester Street,  
West.

|| THE NUNNERIES—Foundling, Notre Dame,  
St. Joseph and Paul St. Streets.

§ THE JAIL—St. Mary Street.

• HIGH SCHOOL OF MONTREAL—Hanover  
Street.

---

• Require Tickets, or an introduction.

† Free.

‡ Must be paid for.

|| By application to the Superior.

§ By application to the Sheriff.

---

**ADVERTISEMENTS.**

---

**CALEDONIA SPRINGS' DEPOT,**  
 12, *St. Francois Xavier Street,*  
**MONTREAL.**

**T**HE Subscriber begs most respectfully to inform the Public throughout Canada, and the United States, that he receives a **DAILY SUPPLY** of the unrivalled **MINERAL WATERS** from the **CALEDONIA SPRINGS.**

These justly celebrated Waters have performed more wonderful cures than any other Mineral Waters in America; and the immense demand, which is daily increasing, is the surest proof of their great virtue and efficacy.

They have been proved, by tens of thousands, to be the mildest and safest aperient that can be found; and as a cooling and refreshing drink in warm weather they cannot be excelled.

All orders attended to with punctuality and dispatch.

**ANDREW MANN,**  
 AGENT.

Montreal, August 3, 1848.

---

**DAGUERREOTYPE.**

**T. C. DOANE,**  
 DAGUERREOTYPE ARTIST,  
*No. 2, Place d'Armes,*  
**MONTREAL.**

Daguerreotype Likenesses from Nature, Paintings, Engravings, or Daguerreotypes, copied with the greatest neatness.

A large number of Specimens to be seen at his Rooms, over the Drug Store of Messrs. S. JONES LYMAN & Co., Place d'Armes.

---

**WILLIAM COOTE,**  
 CUSTOM-HOUSE AND FORWARDING AGENT,  
 Rail-Road Wharf, St. Johns, Canada East.

During the Season of Navigation, Letters from the South should be addressed "*W. Coote, Care of the Postmaster, Whitehall, N. Y.*"

---

**DR. G. RUSSELL'S**  
**SURGERY & PHRENOLOGICAL CABINET,**  
 No. 11, ST. FRANCOIS XAVIER STREET.

---

*N. B.*—Cabinet free to Visitors.  
 Montreal, August, 1848.

---

**JASON C. PEIRCE & SON,**  
**FORWARDING AND CUSTOM-HOUSE**  
**AGENTS,**  
 SAINT JOHNS, CANADA EAST.

---

*Agents.*

POPE CATLIN, } No. 33, Coenties Slip, New  
 CHARLES B. JAMES, } York.  
 L. J. N. STARK, }  
 L. A. JOHNSON, No. 9, Coenties Slip.  
 J. H. HOOKER, No. 13, Long Wharf, } Boston.  
 C. L. WARF, No. 16, Long Wharf, }  
 H. A. HOLCOMB, 101, Pier, } Albany.  
 H. J. GILMAN, 106, Pier, }  
 JAS. H. HOOKER, 155, River Street, Troy.  
 O. F. BLOUNT, 193, River Street, Troy.  
 TRAVIS & Co., } Whitehall.  
 O. BASCOM, }  
 FOLLETTE & BRADLEY, } Burlington.  
 J. S. WARE, }  
 H. H. HAILE, Plattsburgh.

**GEORGE BENT, MONTREAL.**

HARNDEN & Co., EXPRESS, } Boston.  
 WALKER & Co., EXPRESS, }  
 LIVINGSTON & WELLS, EXPRESS, Wall Street,  
 New York.  
 VIRGIL & RICE, EXPRESS, Montreal, Albany, and  
 New York.

---

**ALLEN'S WEEKLY EXPRESS**  
**FROM MONTREAL TO HAMILTON,**  
*FOR THE MAIL LINE,*  
**WINTER AND SUMMER.**

---

MONTREAL—Ottawa Hotel, McGill Street.  
 KINGSTON—Goodfellow's Hotel.  
 TORONTO—Wellington Hotel.  
 HAMILTON—Week's Hotel.

---

For the conveyance of all kinds of valuable Parcels  
 and Light Goods.

**VIRGIL & RICE'S**  
**TROY, ALBANY, AND NEW YORK**  
**EXPRESS,**

ARRIVES—THURSDAY MORNING, and  
 LEAVES—FRIDAY NOON.

**CHENEY & CO.'S**  
**MONTREAL AND BOSTON**

**EXPRESS,**

*Via* Burlington, Vt., Concord, N. H., and Lowell,

ARRIVES—THURSDAY MORNING, and  
 LEAVES—SAME DAY, AT NOON.

GEORGE BENT,

AGENT,

183, St. Paul Street, Montreal.

**SMEAD'S EXPRESS**

FOR THE UNITED STATES & EUROPE

**I**S now thoroughly established in this City, under  
 charge of the Subscriber, and is appointed to  
 arrive regularly on TUESDAY MORNINGS, and  
 leave on the same day, at TWELVE o'clock,  
 NOON.

JOSIAS BRAY,

AGENT.

Hamilton, 1848.

**MINERVA LIFE ASSURANCE CO.,**

84, King William Street, Mansion House,

LONDON.

*Agent in Canada.*—D. C. NAPIER.

*Physician at Montreal.*—DR. A. F. HOLMES.

**T**HE Rates of Premium for all risks are the  
 same as those charged in England; and par-  
 ties Assured at this Office are not subject to any  
 extra charge whatever, for the voyage to Europe,  
 and *vice versa*, provided previous intimation be  
 given to the Agent.

The next QUINQUENNIAL DIVISION of  
 PROFITS will be made in JUNE, 1852, and all  
 persons Assuring, by the Participating Scale, prior  
 to the 31st DECEMBER, 1850, will be entitled to  
 share therein. Prospectuses, and every necessary  
 information as to the mode of effecting Assurances,  
 may be obtained from the Agent.

D. C. NAPIER,

49, Champ de Mars Street.

c

**LEMUEL GILBERT'S**  
**BOSTON PIANO-FORTE AGENCY,**  
*25, Great St. James Street,*  
**MONTREAL.**

**T**HE Subscribers have received a Splendid Assortment of PIANO-FORTES from the Manufactory of the above celebrated Maker, which for brilliancy of tone, durability, and excellence of finish, rank among the very first in the world; and the Subscribers, confident in their surpassing merits, guarantees them to purchasers for the term of five years.

J. B. SMITH & Co.,  
 Agents for LEMUEL GILBERT, Boston.

**TO PRINTERS.**

**INKS FOR SALE.**

**J**UST RECEIVED, at this Office, the usual SPRING ASSORTMENT of PRINTING INKS, from the MANUFACTORY of OLIVER BURR, TROY, NEW YORK, to which the attention of the Trade is earnestly requested. Amongst them will be found the following:—

**FANCY.**

RED,.....	at 12s. 6d. per lb.
GREEN,.....	at do. do.
BLUE,.....	at do. do.
YELLOW,....	at do. do.

**CARD.**

SUPERFINE,....	at 25s. per lb.
FINE,.....	at 10s. per lb.

**BOOK.**

No. 1,.....	at 5s. 0d. per lb.
No. 2,.....	at 3s. 9d. per lb.
No. 4,.....	at 2s. 6d. per lb.
No. 5,.....	at 2s. 0d. per lb.

**NEWS.**

POWER PRESS, .1s. 6d. per lb.
HAND PRESS, ... do. do.

In Kegs to suit Purchasers.

**N. B.**—All the above INKS are warranted as the best in the Market.

—ALSO,—

A few Gross of BURR'S Celebrated BLACK WRITING INK, in Quart Bottles, at \$72 the Gross. In lots to suit Purchasers.

Apply at the

**MORNING COURIER OFFICE,**  
*13, St. Francois Xavier Street.*

# ST. URBAIN STREET ACADEMY.

**T**HE DUTIES of the above SCHOOL will be RESUMED on THURSDAY, August 10th.

Although established but twelve months, the number of Pupils, most of whom come from other Schools in the city, amounts to Eighty; and the rapid progress made by them has given such satisfaction that further applications are being made.

The Principal, having had fifteen years experience in teaching in the most respectable Academies in England, and seven years in Quebec and Montreal, flatters himself that he possesses qualifications for the arduous duties of Teacher not generally met with in this city, and the fact of his distinguished success fully shews how much an Educational Establishment like the St. Urbain Street Academy was needed in Montreal.

From a close observation and careful study of the habits, manners and capabilities of youth in this country, the Principal has been enabled to arrive at certain and unerring principles in the education and management of Pupils which ensure their rapid improvement, stimulate them to industry and application, and call forth any latent talents which the want of discernment and inexperience of other Teachers have allowed to become dormant, thereby quickly fitting them for the different professions and avocations for which they are destined.

Cards of Terms may be procured by application at the School-House.

S. PHILLIPS,  
Principal.

Montreal, July 27, 1848.

105-3w.

A limited number of Boarders is received by the Principal.

**T**HE Undersigned having made arrangements with some first-class Workmen from the well known Pianoforte Factories of COLLARD & COLLARD, and TOWNS & PACKER, of London, is now prepared to do all REPAIRS to the PIANOFORTE, the PEDAL-HARP, GUITARS, VIOLINS, &c.

R. EGAR,  
At Stephenson's Pianoforte Factory,  
No. 6, George Street, off Craig Street.

J. BETHUNE, JUNR.,  
BROKER,

Office, No. 24, St. Francois Xavier Street.  
c 2



### **TURKISH BLACK SALVE,**

Prepared from the original recipe, and guaranteed  
to Cure all the Complaints for which it  
is recommended.

**T**HIS valuable medicine, the renown of which has gone to the uttermost parts of the earth, and which has but lately been introduced into "CANADA," has met with a success which, were its virtues not so well known, would be considered one of the most astonishing events of these momentous times. The manner in which the leading Journals of Canada have come out in praise of its qualities is most commendable, and well befitting the enlightened Press of so great and glorious a Colony.

The Salve is adapted for Swellings of all descriptions, which it either disperses or draws to a head; is a sure and speedy cure for Cuts, Whitlows, Swollen Glands, Broken Breasts, White-Swellings, Scalds, whether from boiling water, oil, or steamboat explosions, Burns, Scrofulous Sores, Sore Nipples, Carbuncles, Scald Head, Gun-Shot Wounds, Punctured Wounds, Bruises, Boils, Frost-Bites, Wens, Chilblains, Ulcerated and Common Sore Throats, Bunions, drawing out Shot and Splinters; if taken in time it will prevent and cure Cancers, also Swellings arising from a blow in the Breast, Ring-Worm, Pains in the Back, Rheumatism, Gout, Pains in the Chest, Palpitation, Complaints in the Liver, Spine, Heart, Hip, Rushing of Blood to the Head, Swelled Face, and Toothache. It is not only for the Human Race, but it extends its healing qualities to the Quadrupeds. It is an excellent application for Saddle and Harness Galls, Broken Knees, Cracked Hoofs, &c. In fact, it is impossible to enumerate half the Complaints the Proprietors of this Salve have been successful in curing; and they have seldom found it to fail. It is portable, and requires but little care in the application.

All letters must be addressed to Messrs. SOMERVILLE & Co., care of Messrs. S. J. LYMAN & Co., Montreal.

None are genuine without the signature of the Proprietors are on the wrapper.

For Certificates, &c., see Label accompanying the Salve.

---

## PERIODICAL AGENCY.

R. W. LAY'S  
 PERIODICAL & BOOKSELLING AGENCY,  
 No. 12, *St. Francois Xavier Street*,  
 (OPPOSITE HOSPITAL STREET,)  
 MONTREAL.

**R.** W. L. is AGENT for all GEORGE VIR-  
 TUE'S ILLUSTRATED WORKS,  
 among which he would more particularly enumerate  
 THE PICTORIAL BIBLE, and FLETCHER'S  
 FAMILY DEVOTION. He is Agent for nearly  
 every PERIODICAL WORK of any merit, pub-  
 lished in America, including

The Eclectic Magazine of Foreign Literature  
 Hunt's Merchants' Magazine  
 Silliman's Journal of Science and Arts  
 Biblical Repository  
 Bibliotheca Sacra  
 Mother's Magazine  
 Graham's Magazine  
 Columbian Magazine  
 Union Magazine  
 Horticulturist, Agriculturist, Cultivator  
 And Works of a similar nature.

—ALSO,—

ALL HARPER'S PICTORIAL WORKS, in-  
 cluding THE HISTORY OF ENGLAND,  
 SHAKSPERE, &c., &c.

From the facilities which he possesses, R. W. L.  
 is able to deliver the Works referred to, and many  
 others, at a *very small advance* upon the New York  
 prices. Orders for Books, Periodicals, &c., &c.,  
 will be thankfully received, and promptly attended  
 to.

R. W. LAY,  
 12, *St. Francois Xavier Street*,  
 (Opposite Hospital Street.)

---

## TO EMIGRANTS.

**P**ERSONS having EMIGRATED to CA-  
 NADA, who are desirous of hearing of their  
 Relatives and Friends, who may be resident in  
 the UNITED STATES or CANADA, by apply-  
 ing at the OFFICE of the Undersigned, NEWS-  
 PAPER AGENT, can have ADVERTISE-  
 MENTS inserted in any Paper in the above  
 places, on the most moderate terms.

Apply to

R. A. WHYTE.  
 17, *St. Francois Xavier Street*, }  
 Montreal. }

---

**DONEGANA'S HOTEL,**  
**NOTRE DAME STREET,**  
**MONTREAL.**

---

*N. B.*—Carriages in attendance to and from the  
Boats and Rail-Road Station, free of charge.

**J. M. DONEGANA,**  
*Proprietor.*

---

**OTTAWA HOTEL,**  
**GREAT ST. JAMES STREET,**  
**MONTREAL,**  
**KEPT BY GEORGE HALL.**

---

**COMPAIN'S**  
**R E S T A U R A N T ,**  
**PLACE D'ARMES.**

*Opposite the Bank of Montreal.*

---

**M**R. COMPAIN desires to return his sincere thanks to the Public for the support he has received since he opened the above Establishment, and assures those who have hitherto favoured him with their visits, that he will omit nothing to increase their comfort for the future.

Mr. COMPAIN flatters himself that his experience in all parts of the world, including the East Indies and China, where he was for many years Chief in the Kitchens of the Governors General, and Admirals, and subsequently in the two Battalions of the Rifle Brigade, and some of the most celebrated London Clubs, has given him the ability to conduct the business of a Restaurateur with first rate success.

His public **BILL OF FAIR** will comprise every delicacy of the Season.

He will also be ready to serve **REFRESHMENTS** of any kind to **PRIVATE PARTIES** of from Twenty to Sixty.

**PIC-NICS** or any similar Entertainments will also be provided and attended.

The **BEERS, WINES, SPIRITS,** and **LIQUEURS,** kept at this Establishment, will be chosen without regard to expense.

---

**MISSISQUOI HOTEL,**  
**BY LEVI HINCKLEY,**  
**OPPOSITE THE CUSTOM HOUSE**  
**PHILIPSBURG, C. E.**

---

COMMERCIAL HOTEL,  
SOREL.

---

**T**HE Subscriber begs leave to inform the Public, that the above Establishment, which has recently been **FITTED UP** in the neatest and most suitable manner, with every necessary requisite, **LADIES' and GENTLEMEN'S SITTING-ROOMS**, Large and Well-Aired **BED-ROOMS**, Good Beds, **STABLING** for Twelve Horses or more, together with several other Out-Offices, is now ready for the reception of Travellers.

The **COMMERCIAL HOTEL** is situated nearly opposite the Residence of **R. HARROWER, Esq.**, being the most eligible situation in the Town, and not more than one minute's walk from the Steamboat Wharf, which will be found a great acquisition by the Travelling Public.

The Subscriber having secured the services of one of the best Pastry Cooks in Montreal, promises that the Culinary Department shall be conducted with the utmost regularity, and shall give the utmost satisfaction; that the Table shall be always provided with the Richest Viands that the Market can afford; and hopes, by unremitting attention to the comfort and convenience of the Guests, combined with *very moderate charges*, to gain a share of the Public patronage.

**R. HARE.**

---

**OTTAWA HOTEL,**  
**SAULT-AU-MATELOT STREET,**  
**LOWER TOWN, QUEBEC,**

(LATE MERIAM'S,)

**JOHN D. TRIPP,**  
*Proprietor.*

---

**LONDON EATING-HOUSE, COFFEE**  
**AND READING-ROOM,**  
**SAULT-AU-MATELOT STREET,**  
**QUEBEC.**

---

**T**HE Subscriber begs to inform the Public generally, that he has **OPENED** the above Establishment for the purpose of supplying **MEATS** and **SOUP** by the Plate or Pound. **COFFEE** and **TEA** always ready.

**W. M.** has made arrangements for a regular supply of the Illustrated and other English Papers, together with Periodicals and the Daily Papers.

**W. MUNDAY.**

---

**QUEBEC EXCHANGE**  
**COFFEE AND REFRESHMENT ROOM,**  
**LOWER TOWN.**

---

**J**OHN THOMAS, late Proprietor of the Hotel River du Loup, begs to inform his friends and the public that he has Leased the above Premises, and at considerable expense furnished the same, so as to insure the comfort of those who may favor him with their support.

The situation of the above is every way convenient to Merchants, Masters of Vessels, and others engaged in business, being situate in the Exchange Building, Arthur Street, in close proximity to the Banks, Custom House, and the business part of the Lower Town.

There will be constantly on hand, **C O L D SNACKS** of the best description; with **CHOPS, STEAKS, SOUPS, &c.**, as ordered.

**ICED GINGER BEER, SODA WATER, LEMONADE,** and other refreshing beverages always on hand.

---

**HOBROUGH'S HOTEL,**  
**POINT LEVY.**

---

**T**HE Subscriber begs leave to inform his friends and the public that he has Leased the extensive and commodious Premises at Point Levy, known as **LAMONTAGNE'S HOTEL**, which he intends to keep for the ensuing Season as a **H O T E L** and **BOARDING HOUSE**, and trusts by his strict attention to the comforts of his Boarders and Visitors, to give general satisfaction.

**LUNCHEONS** and **REFRESHMENTS** supplied at the shortest notice.

**J. HOBROUGH.**

**J. H.** begs leave to remind his friends that the regular passage of the Steam Ferry-Boats is now ensured.

---

**CALEDONIA HOTEL,**  
**CALEDONIA SPRINGS.**

---

**T**HE Subscriber begs leave most respectfully to return his sincere thanks to his numerous friends and the public for the very liberal encouragement he has received during his occupation of the above Premises, and to assure them that no exertion on his part shall be wanted to render his **BOARDERS** and **VISITORS** as comfortable as possible.—**GOOD YARD** and **STABLING.**

**ANGUS M'MASTER.**

NEW CALEDONIA SPRINGS' HOTEL,  
CALEDONIA SPRINGS,

*Opposite Messrs. Brock & Cushing's Store.*

JOHN McMULLIN

**W**OULD particularly inform those visiting the SPRINGS, that he has Leased the above named HOTEL, (formerly kept by S. SMITH,) where he is prepared to receive BOARDERS, on moderate terms; and begs to assure those who patronise him, that he will use his best endeavors for their comfort.

The House occupies an airy and pleasant situation, within a very short distance from the Springs.

CANADA HOUSE,  
CALEDONIA SPRINGS.

**T**HE Subscriber has taken the CANADA HOUSE for the Season, and is prepared to receive VISITORS; and trusts, by strict attention to their comfort, to give satisfaction to those who call upon him.

WM. SCOBIE,

*Late of the Catskill Mountain House,  
And United States Hotel, Saratoga Springs.*

MOTT'S HOTEL,  
ST. JOHNS, C. E.

**C**ARRIAGES in attendance to convey passengers and their baggage to and from the Steamboats and Rail-Road Cars, free of charge.

HORSES AND CARRIAGES TO LET.

L. SHAW,

*Late of Middlebury, Vt.*

VICTORIA HOUSE,  
No. 3, HARDY'S STONE BUILDINGS,  
(Next Door to the Ship Chaudlery of Captain DONALDSON,)

KEPT BY S. PHILLIPS,  
KINGSTON, C. W.

E. H. LEWIS' HOTEL,  
BELLEVILLE, C. W.

---

BROWN'S HOTEL,  
*BELLEVILLE, C. W.*

---

---

ALBION HOTEL,  
*COBOURG,*  
BY R. C. RUTHERFORD & Co.

---

---

NORTH AMERICAN HOTEL,  
*TORONTO,*  
KEPT BY S. C. HOWARD.

---

---

WELLINGTON HOTEL,  
CORNER OF  
*CHURCH AND WELLINGTON STREETS,*  
TORONTO.  
RUSSEL INGLIS,  
*Proprietor.*

---

---

VICTORIA INN,  
Formerly the "BEE-HIVE INN,"  
BY JOHN CROZIER,  
*STREETSVILLE, C. W.*

---

---

VICTORIA GARDENS HOTEL,  
*KING STREET, EAST,*  
KEPT BY HUGH FALCONER,  
HAMILTON, C. W.

---

---

MUNSTER HOTEL,  
(Directly Opposite the Court House,)  
BY DENIS MILLIGAN,  
HAMILTON, C. W.

---

---

YOUNG'S COMMERCIAL HOTEL,  
*ANNE STREET,*  
HAMILTON, C. W.

---

---

WICKES' HOTEL,  
*HAMILTON, C. W.*

---

---

CITY HOTEL,  
HAMILTON, C. W.

*N. B.*—An Omnibus will always be in attendance to convey passengers to and from the Steamboats.

T. DAVIDSON,  
Formerly of the "St. Catharine House."

---

PRINCE ALBERT HOTEL,  
BY T. N. JOHNSON,  
SANDWICH, C. W.

---

EXCHANGE HOTEL,  
BY J. B. PARENT,  
SANDWICH, C. W.

---

PHENIX HOTEL,  
WHITEHALL, N. Y.

*N. B.*—Passengers and their luggage conveyed to and from the Boats free of charge.

JOSEPH ALLEN,  
*Proprietor.*

---

AMERICAN HOTEL,  
TROY, N. Y.,

(A short distance above the Steamboat Landing,)

BY SHEPPARD & MILLER.

*N. B.*—Rail-Road Cars for Boston, Saratoga, and the West, stop in front of the house, taking and leaving passengers.

---

HOWARD HOTEL,  
NEW YORK,  
CORNER OF  
BROADWAY AND MAIDEN LANE,  
BY THOMAS & Co.

---

FLORENCE'S HOTEL,  
400, BROADWAY,  
NEW YORK.

J. FLORENCE, JR.,  
*Proprietor.*



---

**UNITED STATES HOTEL,  
BOSTON,**

(Located at the termination of the Norwich, Worcester and Western Rail-Road,)

AT THE CORNER OF  
**BEACH, KINGSTON & LINCOLN STREETS.**  
R. N. HOLIMAN & Co.,  
*Proprietors.*

---

**PACIFIC HOTEL,**  
Nos. 162, 164 & 166, **GREENWICH STREET,**  
**NEW YORK.**

Board per Day, \$1,25 ; Do. per Week, \$8,00.  
**A. FLOWER.**

---

**J. STARKE & CO.,**  
BOOK, JOB,  
AND  
**GENERAL LETTER-PRESS  
PRINTERS,**  
St. Therese Street, Montreal,

**R**ETURN thanks to their Customers and the Public, for the patronage they have received during the year, and beg to state that, as heretofore, neither pains nor expense will be spared to maintain the character of the Establishment, and to give satisfaction to all who may favor them with their orders.

---

EVERY DESCRIPTION OF  
**PLAIN AND FANCY PRINTING,**  
EXECUTED WITH

Neatness, Accuracy and Dispatch,  
AT AS LOW PRICES AS ANY OTHER ESTABLISHMENT IN THE CITY.

---

 Law Blanks always on hand and for Sale.

---

**DICKINSON, NELSON & CO.,**  
General Commission Agents, Ship and  
Produce Brokers,  
No. 59, **COMMISSIONERS STREET,**  
**MONTREAL.**

