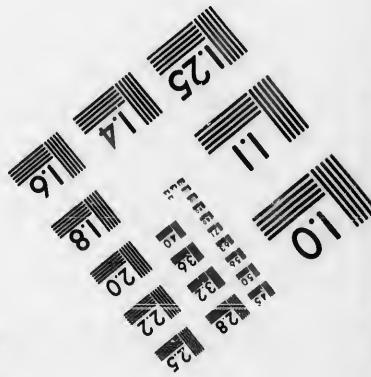
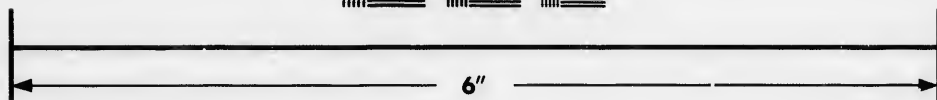
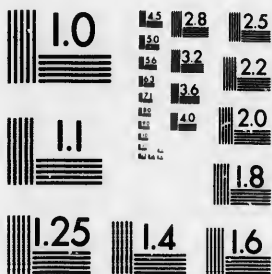


# IMAGE EVALUATION TEST TARGET (MT-3)



Photographic  
Sciences  
Corporation

23 WEST MAIN STREET  
WEBSTER, N.Y. 14580  
(716) 872-4503

Ca

**CIHM/ICMH  
Microfiche  
Series.**

**CIHM/ICMH  
Collection de  
microfiches.**



**Canadian Institute for Historical Microreproductions / Institut canadien de microreproductions historiques**

**© 1987**

# Technical and Bibliographic Notes/Notes techniques et bibliographiques

The Institute has attempted to obtain the best original copy available for filming. Features of this copy which may be bibliographically unique, which may alter any of the images in the reproduction, or which may significantly change the usual method of filming, are checked below.

L'Institut a microfilmé le meilleur exemplaire qu'il lui a été possible de se procurer. Les détails de cet exemplaire qui sont peut-être uniques du point de vue bibliographique, qui peuvent modifier une image reproduite, ou qui peuvent exiger une modification dans la méthode normale de filmage sont indiqués ci-dessous.

- ☐ Coloured covers/  
Couverture de couleur
- ☐ Covers damaged/  
Couverture endommagée
- ☐ Covers restored and/or laminated/  
Couverture restaurée et/ou pelliculée
- ☐ Cover title missing/  
Le titre de couverture manque
- ☐ Coloured maps/  
Cartes géographiques en couleur
- ☐ Coloured ink (i.e. other than blue or black)/  
Encre de couleur (i.e. autre que bleue ou noire)
- ☐ Coloured plates and/or illustrations/  
Planches et/ou illustrations en couleur
- ☐ Bound with other material/  
Relié avec d'autres documents
- ☐ Tight binding may cause shadows or distortion  
along interior margin/  
La reliure serrée peut causer de l'ombre ou de la  
distorsion le long de la marge intérieure
- ☐ Blank leaves added during restoration may  
appear within the text. Whenever possible, these  
have been omitted from filming/  
Il se peut que certaines pages blanches ajoutées  
lors d'une restauration apparaissent dans le texte,  
mais, lorsque cela était possible, ces pages n'ont  
pas été filmées.
- ☐ Additional comments:/  
Commentaires supplémentaires:

- ☐ Coloured pages/  
Pages de couleur
- ☐ Pages damaged/  
Pages endommagées
- ☐ Pages restored and/or laminated/  
Pages restaurées et/ou pelliculées
- ☒ Pages discoloured, stained or foxed/  
Pages décolorées, tachetées ou piquées
- ☒ Pages detached/  
Pages détachées
- ☒ Showthrough/  
Transparence
- ☐ Quality of print varies/  
Qualité inégale de l'impression
- ☐ Includes supplementary material/  
Comprend du matériel supplémentaire
- ☐ Only edition available/  
Seule édition disponible
- ☐ Pages wholly or partially obscured by errata  
slips, tissues, etc., have been refilmed to  
ensure the best possible image/  
Les pages totalement ou partiellement  
obscurcies par un feuillet d'errata, une pelure,  
etc., ont été filmées à nouveau de façon à  
obtenir la meilleure image possible.

This item is filmed at the reduction ratio checked below/  
Ce document est filmé au taux de réduction indiqué ci-dessous.

10X	14X	18X	22X	26X	30X
<input type="checkbox"/>	<input type="checkbox"/>	<input type="checkbox"/>	<input checked="" type="checkbox"/>	<input type="checkbox"/>	<input type="checkbox"/>
12X	16X	20X	24X	28X	32X

The copy filmed here has been reproduced thanks to the generosity of:

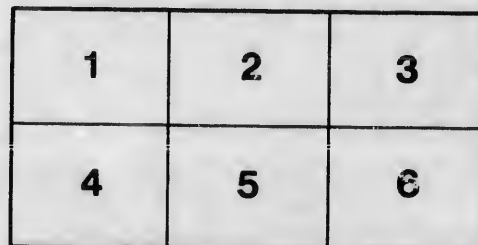
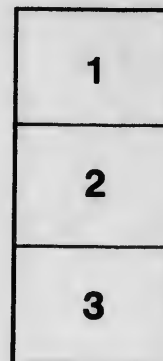
The Nova Scotia  
Legislative Library

The images appearing here are the best quality possible considering the condition and legibility of the original copy and in keeping with the filming contract specifications.

Original copies in printed paper covers are filmed beginning with the front cover and ending on the last page with a printed or illustrated impression, or the back cover when appropriate. All other original copies are filmed beginning on the first page with a printed or illustrated impression, and ending on the last page with a printed or illustrated impression.

The last recorded frame on each microfiche shall contain the symbol  $\rightarrow$  (meaning "CONTINUED"), or the symbol  $\nabla$  (meaning "END"), whichever applies.

Maps, plates, charts, etc., may be filmed at different reduction ratios. Those too large to be entirely included in one exposure are filmed beginning in the upper left hand corner, left to right and top to bottom, as many frames as required. The following diagrams illustrate the method:



L'exemplaire filmé fut reproduit grâce à la générosité de:

The Nova Scotia  
Legislative Library

Les images suivantes ont été reproduites avec le plus grand soin, compte tenu de la condition et de la netteté de l'exemplaire filmé, et en conformité avec les conditions du contrat de filmage.

Les exemplaires originaux dont la couverture en papier est imprimée sont filmés en commençant par le premier plat et en terminant soit par la dernière page qui comporte une empreinte d'impression ou d'illustration, soit par le second plat, selon le cas. Tous les autres exemplaires originaux sont filmés en commençant par la première page qui comporte une empreinte d'impression ou d'illustration et en terminant par la dernière page qui comporte une telle empreinte.

Un des symboles suivants apparaîtra sur la dernière image de chaque microfiche, selon le cas: le symbole  $\rightarrow$  signifie "A SUIVRE", le symbole  $\nabla$  signifie "FIN".

Les cartes, planches, tableaux, etc., peuvent être filmés à des taux de réduction différents. Lorsque le document est trop grand pour être reproduit en un seul cliché, il est filmé à partir de l'angle supérieur gauche, de gauche à droite, et de haut en bas, en prenant le nombre d'images nécessaire. Les diagrammes suivants illustrent la méthode.

RULES  
OF THE  
**CROWN FIRE COMPANY.**

ADOPTED

AT A MEETING HELD IN

OCTOBER, 1839.

---

LUNENBURG, N. S.

E. A. Moody, printer.

NS

352.3

C

1685

2  
Fr  
he

Pr  
on  
ca

Se  
for  
ye  
Se  
ex

the  
on  
up  
Nu  
the

**R U L E S**  
**OF THE**  
**CROWN FIRE COMPANY.**

---

**RULE I.**

**THIS Society shall be called the LUNENBURG CROWN FIRE COMPANY. The meetings of the Society to be held Quarterly.**

**II.**

**The Society shall consist of a President, Vice President and Secretary ;—to be chosen by ballot on the first Monday in April in each year. Any vacancy shall be supplied at the succeeding meeting.**

**III.**

**All members shall be liable to serve the office of Secretary, except the President and Vice President for the time being, who shall also be exempt the year following the expiration of their office. The Secretary who has served the year previous, shall be exempted for three years.**

**IV.**

**The Secretary shall be chosen as follows :—All the names of the company present shall be written on paper and put in a hat, and numbered from one upwards. The President shall draw the names.—Number one shall be liable to serve as Secretary for the ensuing year. If he declines, he shall pay a fine;**

and number *two* drawn, shall be liable to serve or pay a fine,—and so on until one can be found willing to serve.

## V.

All members shall be chosen by ballot. Three fourths of the members present assenting, shall admit a member.

## VI.

The President shall regulate and direct the members at any Fire. He shall preserve order at the meetings. He shall take no part in the debates, and give no vote but a casting vote. In the absence of the President, the Vice President shall supply his place.

## VII.

The Secretary's duty shall be to keep the books and minutes, and be answerable for the same. He shall attend the members of each meeting, and keep a minute of the proceedings ;—shall collect all fines and dues, and make such payments as the Society shall direct ; and shall generally execute all the duties imposed upon him by the Society.

## VIII.

Any person who is now a member, or who shall hereafter become a member of the Society, shall furnish himself forthwith with two leather Buckets, with a Crown and his Name painted thereon ; and also the Tin Badge, and a copy of these Rules. All members shall be obliged to keep their Buckets in good order and condition, and to have them suspended in the front entrance of their dwelling Houses ready for immediate use.



## IX.

Upon an alarm of Fire, each member of the Company shall repair thereto with his Buckets and Badge, and render all the assistance in his power.

## X.

A Committee shall be appointed quarterly by the Society, to inspect the Buckets and examine their state and condition, and whether they are properly placed; and report to the next meeting of the Society in writing.

## XI.

The funds of the Society shall be applied to such purposes as the Society shall from time to time direct.

## XII.

Every member who shall not answer at the Roll-call of the Company, shall be liable to a fine, unless he can shew a sufficient excuse for his absence.

## XIII.

The Secretary shall warn the members of each meeting, at least the day before.

## XIV.

All motions shall be decided by a majority of votes, except the admission of new members. No member to leave the room without leave of the President while the meeting is convened.

## XV.

Every member shall pay seven pence halfpenny, each regular meeting, to the general fund.

The following Fines shall be imposed and collected for breach of the foregoing Rules :—

For not serving the office of Secretary—Five Shillings.

For not having Buckets in order or in their proper place—Two shillings and six pence.

For any member refusing to serve on any Committee—Two shillings and six pence.

For any member neglecting his duty as a member of any Committee—Two shillings and six pence.

For not being supplied with Buckets—Five shillings.

For not answering at Roll-call—Three pence.

For Secretary not warning members—Two shillings and six pence.

For not attending at any Fire without sufficient excuse—Five shillings.

For proposing any person as a member without his assent—Two shillings and six pence.

For not providing a copy of these Rules—One shilling and three pence.

For not providing Badge—Seven pence halfpenny.

For leaving the room during meeting without leave—Seven pence halfpenny.

These Rules may be altered or amended, at any general meeting, with the assent of two thirds of the members present.

These Rules shall be printed, and each member shall furnish himself with a copy at the next meeting after the same shall be adopted.

1839  
7

LIST OF MEMEERS OF THE CROWN FIRE COMPANY.

✕ George T. Solomon  
 ✕ C. J. Rudolf  
 ✕ Wm. Rudolf  
 ✕ John Heckman  
 ✕ Godfrey Jacobs  
 ✕ Michael Rudolf  
 ✕ Charles B. Owen  
 ✕ Henry Bolman  
 ✕ Hallcway Hayes  
 ✕ John Creighton  
 ✕ James Kearney  
 ✕ John N. Zwicker  
 ✕ Wm. Heckman  
 ✕ Charles Godfrey  
 ✕ Daniel Owen  
 ✕ Edmund Zwicker

J. Jos. Rudolf  
 John B. Comingo ✕  
 Robert Scott ✕  
 Henry Ernst ✕  
 John Hunt ✕  
 John H. Kaulbach ✕  
 John C. Rudolf ✕  
 Judah Wells ✕  
 Joseph Stevermann ✕  
 H. S. Jost  
 Lewis Oxner ✕  
 Joshua Kaulbach ✕  
 William Ross ✕  
 Casper Metzler ✕  
 Edward Bolman ✕  
 C. E. W. Schmidt ✕

