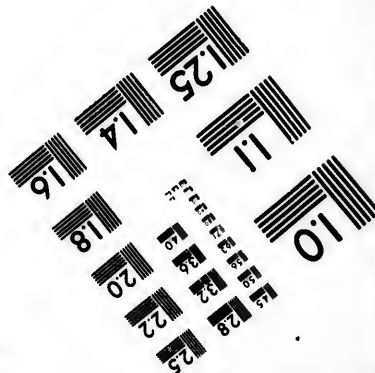
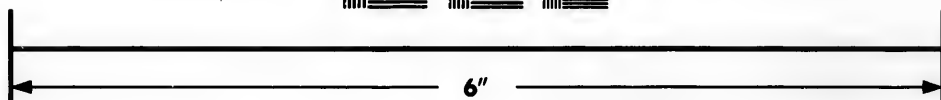
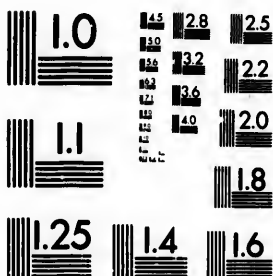


# IMAGE EVALUATION TEST TARGET (MT-3)



# Photographic Sciences Corporation

**23 WEST MAIN STREET  
WEBSTER, N.Y. 14580  
(716) 872-4503**

**CIHM/ICMH  
Microfiche  
Series.**

**CIHM/ICMH  
Collection de  
microfiches.**



**Canadian Institute for Historical Microreproductions / Institut canadien de microreproductions historiques**

**© 1985**

# Technical and Bibliographic Notes/Notes techniques et bibliographiques

The Institute has attempted to obtain the best original copy available for filming. Features of this copy which may be bibliographically unique, which may alter any of the images in the reproduction, or which may significantly change the usual method of filming, are checked below.

L'institut a microfilmé le meilleur exemplaire qu'il lui a été possible de se procurer. Les détails de cet exemplaire qui sont peut-être uniques du point de vue bibliographique, qui peuvent modifier une image reproduite, ou qui peuvent exiger une modification dans la méthode normale de filmage sont indiqués ci-dessous.

- ☒ Coloured covers/  
Couverture de couleur
- ☐ Covers damaged/  
Couverture endommagée
- ☐ Covers restored and/or laminated/  
Couverture restaurée et/ou pelliculée
- ☐ Cover title missing/  
Le titre de couverture manque
- ☐ Coloured maps/  
Cartes géographiques en couleur
- ☐ Coloured ink (i.e. other than blue or black)/  
Encre de couleur (i.e. autre que bleue ou noire)
- ☐ Coloured plates and/or illustrations/  
Planches et/ou illustrations en couleur
- ☒ Bound with other material/  
Relié avec d'autres documents
- ☐ Tight binding may cause shadows or distortion  
along interior margin/  
La reliure serrée peut causer de l'ombre ou de la  
distorsion le long de la marge intérieure
- ☐ Blank leaves added during restoration may  
appear within the text. Whenever possible, these  
have been omitted from filming/  
Il se peut que certaines pages blanches ajoutées  
lors d'une restauration apparaissent dans le texte,  
mais, lorsque cela était possible, ces pages n'ont  
pas été filmées.
- ☐ Additional comments:/  
Commentaires supplémentaires:

- ☐ Coloured pages/  
Pages de couleur
- ☐ Pages damaged/  
Pages endommagées
- ☐ Pages restored and/or laminated/  
Pages restaurées et/ou pelliculées
- ☒ Pages discoloured, stained or foxed/  
Pages décolorées, tachetées ou piquées
- ☐ Pages detached/  
Pages détachées
- ☒ Showthrough/  
Transparence
- ☐ Quality of print varies/  
Qualité inégale de l'impression
- ☐ Includes supplementary material/  
Comprend du matériel supplémentaire
- ☐ Only edition available/  
Seule édition disponible
- ☐ Pages wholly or partially obscured by errata  
slips, tissues, etc., have been refilmed to  
ensure the best possible image/  
Les pages totalement ou partiellement  
obscurcies par un feuillet d'errata, une pelure,  
etc., ont été filmées à nouveau de façon à  
obtenir la meilleure image possible.

This item is filmed at the reduction ratio checked below/  
Ce document est filmé au taux de réduction indiqué ci-dessous.

10X	14X	18X	22X	26X	30X
<input type="checkbox"/>	<input type="checkbox"/>	<input checked="" type="checkbox"/>	<input type="checkbox"/>	<input type="checkbox"/>	<input type="checkbox"/>
12X	16X	20X	24X	28X	32X

The copy filmed here has been reproduced thanks to the generosity of:

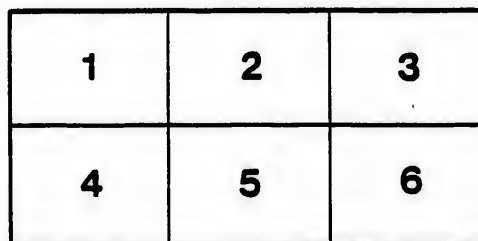
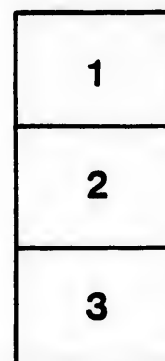
Medical Library  
McGill University  
Montreal

The images appearing here are the best quality possible considering the condition and legibility of the original copy and in keeping with the filming contract specifications.

Original copies in printed paper covers are filmed beginning with the front cover and ending on the last page with a printed or illustrated impression, or the back cover when appropriate. All other original copies are filmed beginning on the first page with a printed or illustrated impression, and ending on the last page with a printed or illustrated impression.

The last recorded frame on each microfiche shall contain the symbol ➡ (meaning "CONTINUED"), or the symbol ▼ (meaning "END"), whichever applies.

Maps, plates, charts, etc., may be filmed at different reduction ratios. Those too large to be entirely included in one exposure are filmed beginning in the upper left hand corner, left to right and top to bottom, as many frames as required. The following diagrams illustrate the method:



L'exemplaire filmé fut reproduit grâce à la générosité de:

Medical Library  
McGill University  
Montreal

Les images suivantes ont été reproduites avec le plus grand soin, compte tenu de la condition et de la netteté de l'exemplaire filmé, et en conformité avec les conditions du contrat de filmage.

Les exemplaires originaux dont la couverture en papier est imprimée sont filmés en commençant par le premier plat et en terminant soit par la dernière page qui comporte une empreinte d'impression ou d'illustration, soit par le second plat, selon le cas. Tous les autres exemplaires originaux sont filmés en commençant par la première page qui comporte une empreinte d'impression ou d'illustration et en terminant par la dernière page qui comporte une telle empreinte.

Un des symboles suivants apparaîtra sur la dernière image de chaque microfiche, selon le cas: le symbole ➡ signifie "A SUIVRE", le symbole ▼ signifie "FIN".

Les cartes, planches, tableaux, etc., peuvent être filmés à des taux de réduction différents. Lorsque le document est trop grand pour être reproduit en un seul cliché, il est filmé à partir de l'angle supérieur gauche, de gauche à droite, et de haut en bas, en prenant le nombre d'images nécessaire. Les diagrammes suivants illustrent la méthode.

errata  
l to  
t  
e pelure,  
on à

---

**BISHOP'S COLLEGE SCHOOL,**  
**LENNOXVILLE.**

~~~~~  
**JUNE, 1867.**

---

BISHOP'S COLLEGE SCHOOL,

LENNOXVILLE.

---

JUNE, 1867.

---

**Montreal:**

PRINTED BY JOHN LOVELL, ST. NICHOLAS STREET.

1867.

**COUNCIL OF BISHOP'S COLLEGE SCHOOL.**

---

**THE REV. THE PRINCIPAL. †**

**THE REV. THE RECTOR. †**

**MAJOR CAMPBELL, C.B. †**

**E. CHAPMAN, Esq., M.A.**

**THE REV. C. B. DODWELL, M.A.**

**THE REV. C. HAMILTON, M.A.**

**MONS. C. ROUX, M.A.**

***Bursar*—E. CHAPMAN, Esq.**

***Matron of the School House*—MRS. IRVING.**

*† = dead.*

## Bishop's College School.

*Rector*—The Rev. R. H. WALKER, M. A., late Scholar of Wadham College, Oxford, and formerly Professor of Mathematics at the Royal Military College, Sandhurst.

*Sub-Rector*—The Rev. W. RICHMOND, M. A., Trinity College, Dublin.

### *Assistant Masters.*

- Rev. J. P. Mulvaney & M. A. late Scholar of Lincoln Coll. by 2nd*
1. ~~C. P. MULVANY, Esq., M. A., M. D., Trinity College, Dublin.~~ *2nd Master of Tiberston School England*
  2. E. A. KING, Esq., M. A., Bishop's College.
  3. J. B. HYNDMAN, Esq., L. T., Captain of Bishop's College Rifle Corps.
  4. ~~Vacant.~~ *J. Hepburn Esq.*

*Professor of French and German*—M. C. ROUX, M. A.

*Drill-Master and Warder*—CORPORAL MAJOR DEARNALLY, late of the 1st Life Guards.

Instruction in Drawing is given by the Rev. W. RICHMOND.

Commercial Arithmetic and Book-keeping are taught by Mr. HYNDMAN, to those boys who do not learn Greek.

Fencing, and the Sword exercise, &c., are taught to those who desire it, by CORPORAL MAJOR DEARNALLY.



## INSTRUCTION.

The Rector and Council of Bishop's College desire to frame the instruction and discipline of the School on the model of the best English Schools ; the object they have primarily in view is not only to fit boys for entering the Universities, but to give to all such a liberal education as shall enable them to take a high position in society, and in the world. It is not the general intention of the School Training to fit boys for special pursuits, but arrangements are made whereby boys may substitute the study of German, or Commercial Arithmetic and Book-keeping for that of Greek ; and every effort will be made to meet the special wants of those preparing for any Public and Competitive Examination.

Inasmuch as public school education is often impeded by want of preparation of the younger boys, it is recommended that boys be not sent to Bishop's College, who cannot both read and spell fairly, and work the first four rules in arithmetic.

In order to provide more effectually for the religious training of the boys, it is proposed in future to assemble them in the school every Sunday morning, when instruction will be given to them in the Scriptures, the New Testament in Greek, the Church Catechism, and other collateral teaching.

Boys may be excused from this hour's attendance, if they bring a written request to this effect, addressed to the Rector, and signed by the parents or guardians of the boys seeking to be excused.

Great attention will be paid to drill ; and every boy

will be instructed, not only in calisthenic exercises, but in the elements of military drill, as it is taught in the English Military Colleges.

### ADMISSION TO THE SCHOOL, FEES, &c.

Every boy on entering the School must produce a certificate of good character from his last school, or from a clergyman to whom he and his parents have been personally known.

Under ordinary circumstances, boys will not be admitted who are over 14 years of age.

The Fees for Tuition are as follows :—

|                                        |         |            |
|----------------------------------------|---------|------------|
| Tuition, including French and drill... | \$63.00 | per annum. |
| German.....                            | 10.00   | " "        |
| Drawing per Term.....                  | 5.00    | " "        |

At the commencement of each term, pupils are required to present a certificate from the Bursar that all dues have been settled for the previous term.

Pupils who are absent during any parts of the stated periods of residence will be liable to the whole charge for Tuition.

The Academical Year is divided into three Terms :—

Michaelmas term commencing the last week in August.

Lent " " third week in January.

Trinity " " first week in April.

The two latter Terms, divided as regards payment of fees, constitute really one half-year, as there is no vacation between Christmas and Midsummer. The Christmas vacation lasts one month ; the Midsummer vacation about two months.

The Grand Trunk Railway issue return tickets at a single fare for the double journey, available for the Vacations.

N. B.—The Midsummer Vacation for the present year ends on the 31st of August.

All boys are expected to attend roll call, at 10 o'clock on the morning of Monday, September 2nd.

#### BOARDING.

There is accommodation within the School Building for sixty or seventy boys. The establishment is under the charge of the Sub-rector, with two Assistants; and the domestic comforts of the boys are under the care of the Matron. The whole is under the general supervision of the Rector, whose house is immediately adjoining. The boys are gathered every evening to prepare their lessons, under the charge of one of the Under Masters, who also assists them, in case of their needing help.

Boys are received as boarders by the Rector and other persons in authority at the College, and in some other houses licensed by the Council of the College.

All boys are subject to the general rules of the School, which are in force at all times, but the Rector wishes it to be understood, that when a boy does not reside in the School-house, the head of his boarding house stands to him *in loco parentis*.

The fees for boarders at the School-house are as follows:—

|                           |        |
|---------------------------|--------|
| Board, &c., per week..... | \$3 00 |
| Washing.....              | 0 25   |

Thus, the whole annual expense of a boy residing in

the School-house, pursuing the regular course of study, and exclusive of books and stationery is about

Tuition.....\$ 63 00

Board..... .. 130 00

---

\$193 00

Resident pupils bring their own bedding and towels.

Communications respecting payments should be made to the Bursar, Edward Chapinan, Esq., Bishop's College. Parents are requested to correspond with the matron, Mrs. Irving, on all matters connected with her department.

#### PHYSICAL EDUCATION.

All the boys are regularly drilled; members of the Rifle Corps by the officers of the corps, and the remainder by the Drill-master. There are also opportunities of learning fencing, riding, &c. The healthiness of the place and the abundant opportunities of exercise in the open air, away from the evil influences of the streets of a large city, are perhaps, even greater advantages. All manly exercises, such as cricket, foot-ball, swimming and boating, are pursued with vigour, and encouraged by the authorities.

#### EXAMINATIONS.

Examinations are held at the end of each half year, and the place of a boy in the school, is decided, in part by such examination, and in part, by his position in his class during the half year.

Suitable prizes are awarded to the head boys in the various forms, and every effort is made to induce the boys to work steadily, not only by punishment, but by offering a reasonable stimulus in the way of reward to industry.

## PRIZE LIST.

*Summer Examination, 1867.*

## FORM VI.

NEVITT, 1st Prize. ✓  
ARCHIBALD, 2nd Prize.*French Prizes.*

WHITLOCK, Ma.

## FORM V.

HALL IV, 1st Prize. ✓  
FORNERET, 2nd Prize. ✓

FORNERET.

## FORM IV.

MCGIVERIN, 1st Prize. ✓  
WOOD, 2nd Prize

BENNETT.

## FORM III.

MATHEWSON, 1st Prize.  
NORCOCK, 2nd Prize.

WOOD.

## FORM II.

STUART, 1st Prize.  
DEARNALLY, 2nd Prize.

SCOUGALL.

## FORM I.

GARTH, 1st Prize.  
LUMSDEN, 2nd Prize.

GARTH.

*Prizes for Book-keeping :*

MEREDITH, ma. ✓

BROOKS, —

*Prize for Commercial Studies :*

STEVENSON, ml.

## SCHOOL LIST

*Midsummer, 1867.*

## FORM VI.

*Name.**Residence.*

|                   |                     |
|-------------------|---------------------|
| NEVITT, s.....    |                     |
| ARCHIBALD, A..... | Dickinson's Landing |
| SLEEPER.....      | Coaticook           |
| ANDERSON ma.....  | Quebec              |
| MEREDITH ma.....  | Quebec              |
| AUSTIN.....       | Sherbrooke          |
| HOBSON.....       | Lennoxville         |
| NICOLLS ma.....   | Bishop's College    |
| WHITLOCK ma.....  | New York            |
| RHODES ma.....    | Quebec              |
| WHITLOCK, ml..... | New York            |
| BROOKS.....       | Lennoxville         |

## FORM V.

| <i>Name.</i>    | <i>Residence.</i> |
|-----------------|-------------------|
| HALL, IV.....   | Montreal          |
| FORNERET .....  | Berthier          |
| BENNET.....     | Lennoxville       |
| HALL, III.....  | Montreal          |
| McKENZIE .....  | Lennoxville       |
| McDONNELL.....  | Montreal          |
| TORRANCE .....  | Three Rivers      |
| LA FRENAYE..... | Montreal          |
| CAMPBELL.....   | Montreal          |
| BELL.....       | Lennoxville       |
| STIMSON .....   | Sherbrooke        |

|           |             |
|-----------|-------------|
| RHODES, } | Not Classed |
| MORIN, }  |             |

## FORM IV.

|                    |                  |
|--------------------|------------------|
| McGIVERIN .....    | St Catherines    |
| WOOD .....         | Ulverton, Durham |
| STEVENSON.....     | Quebec           |
| LATHROP.....       | Montreal         |
| NICOLLS.....       | Bishop's College |
| SEWELL.....        | Hamilton         |
| BLYTH.....         | Hamilton         |
| PRING .....        | Port Colborne    |
| BREAKEY.....       | Quebec           |
| BROSTER .....      | Three Rivers     |
| PADDON.....        | Lennoxville      |
| GARRETT.....       | Osnabrock        |
| DOUGLAS.....       | Quebec           |
| DERBISHIRE.....    | Lennoxville      |
| MORKILL.....       | Sherbrooke       |
| STOTESBURY ma..... |                  |
| STEVENSON min..... | Quebec           |
| MOFFATT.....       | Montreal         |
| CUMMINS ma.....    | Lennoxville      |
| MOLONY.....        | Michigan         |
| MILES ma.....      | Lennoxville      |

CUMMINS min., Not Classed

## FORM III.

|                       |             |
|-----------------------|-------------|
| MATHEWSON .....       | Compton     |
| NORCOCK min.....      | Lennoxville |
| O'GRADY ma.....       | Lennoxville |
| MORKILL min.....      | Sherbrooke  |
| MONTIZAMBERT min..... | Quebec      |

| <i>Name.</i>      | <i>Residence.</i> |
|-------------------|-------------------|
| MEREDITH min.     | Quebec            |
| VALLEAU           | Quebec            |
| MONTIZAMBERT ma.  | Quebec            |
| ANDERSON min.     | Quebec            |
| FAIRBANKS.        | New York          |
| NORCOCK ma.       | Lennoxville       |
| MONTIZAMBERT min. | Quebec            |
| HUTCHINS.         | Montreal          |
| TWOSE.            | Sherbrooke        |
| PARKIN.           | Cookshire         |
| STRAHAN           |                   |

RHODES ml., Not Classed

FORM II.

|                 |              |
|-----------------|--------------|
| STUART.         | Henryville   |
| DEARNALLY.      | Lennoxville  |
| SIMMONS         | Liverpool    |
| SLATER          | Ottawa       |
| LEAYCRAFT.      | New York     |
| SCOUGALL.       | Quebec       |
| DRUMMOND.       | Quebec       |
| WURTELE         | Windsor      |
| STOTESBURY min. |              |
| GALT.           | Sherbrooke   |
| LANE            | Sorel        |
| BURROWS         | Montreal     |
| WILLIAMS        | Quebec       |
| STOTESBURY min. |              |
| WATT.           | Fort William |
| LUMSDEN ma.     | Sherbrooke   |
| MORRIS.         | Lennoxville  |
| DELISLE.        | Onslow       |
| SHEPPARD ma.    | Quebec       |
| O'GRADY mi.     | Lennoxville  |
| SHEPPARD tert.  | Quebec       |
| SHEPPARD sec.   | Quebec       |
| CUNARD.         | New York     |
| CULL            | Hartley      |
| MILES min.      | Not Classed. |
| MORGAN          |              |

FORM I.

|                   |            |
|-------------------|------------|
| GARTH.            | Montreal   |
| LUMSDEN, ml.      | Sherbrooke |
| GRAHAM            | Montreal   |
| HARRISON.         | Quebec     |
| DAVIS, JEFFERSON  |            |
| SHEPPARD quartus. | Quebec     |

