

**CIHM  
Microfiche  
Series  
(Monographs)**

**ICMH  
Collection de  
microfiches  
(monographies)**



Canadian Institute for Historical Microreproductions / Institut canadien de microreproductions historiques

**© 1998**

The  
copy  
may  
the  
sign  
chee

This  
Ce d

10x



The copy filmed here has been reproduced thanks to the generosity of:

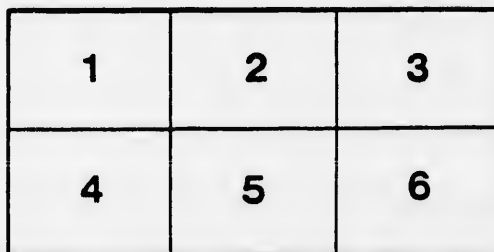
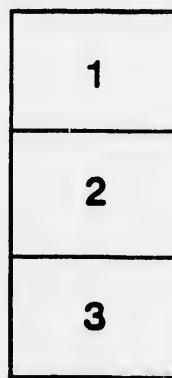
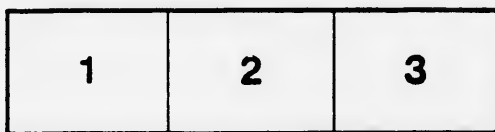
National Gallery of Canada,  
Library

The images appearing here are the best quality possible considering the condition and legibility of the original copy and in keeping with the filming contract specifications.

Original copies in printed paper covers are filmed beginning with the front cover and ending on the last page with a printed or illustrated impression, or the back cover when appropriate. All other original copies are filmed beginning on the first page with a printed or illustrated impression, and ending on the last page with a printed or illustrated impression.

The last recorded frame on each microfiche shell contains the symbol  $\rightarrow$  (meaning "CONTINUED"), or the symbol  $\nabla$  (meaning "END"), whichever applies.

Maps, plates, charts, etc., may be filmed at different reduction ratios. Those too large to be entirely included in one exposure are filmed beginning in the upper left hand corner, left to right and top to bottom, as many frames as required. The following diagrams illustrate the method:



L'exemplaire filmé fut reproduit grâce à la générosité de:

Musée des Beaux-Arts du Canada,  
Bibliothèque

Les images suivantes ont été reproduites avec le plus grand soin, compte tenu de la condition et de la netteté de l'exemplaire filmé, et en conformité avec les conditions du contrat de filmage.

Les exemplaires originaux dont la couverture en papier est imprimée sont filmés en commençant par le premier plat et en terminant soit par la dernière page qui comporte une empreinte d'impression ou d'illustration, soit par le second plat, selon le cas. Tous les autres exemplaires originaux sont filmés en commençant par la première page qui comporte une empreinte d'impression ou d'illustration et en terminant par la dernière page qui comporte une telle empreinte.

Un des symboles suivants apparaît sur la dernière image de chaque microfiche, selon le cas: le symbole  $\rightarrow$  signifie "A SUIVRE", le symbole  $\nabla$  signifie "FIN".

Les cartes, planches, tableaux, etc., peuvent être filmés à des taux de réduction différents. Lorsque le document est trop grand pour être reproduit en un seul cliché, il est filmé à partir de l'angle supérieur gauche, de gauche à droite, et de haut en bas, en prenant le nombre d'images nécessaire. Les diagrammes suivants illustrent la méthode.

C  
N8650  
H43  
1888  
3.24  
c.1

# CATALOGUE

OF A COLLECTION OF BEAUTIFUL

## Water Colour Paintings,

BY WELL KNOWN ARTISTS,

STEEL ENGRAVINGS, &c.

*Comprising A. Hill, Traphin, Henry Carter, &c., and  
representing scenes at Montreal, Bermuda, Toc-  
quay, Bar Harbor, Me., and other points  
of interest, all taken from nature.*

TO BE SOLD

Saturday, March 24th, 1888,

AT 2 O'CLOCK,

—AT—

1821 and 1823 Notre Dame Street.

M. HICKS & CO.,

*Auctioneers.*

ORIGINAL ITALIAN ORCHESTRA  
MUSIC FURNISHED FOR  
BALLS PARTIES  
CONCERTS PRIVATE &  
PUBLIC ASSEMBLIES

National Gallery of Canada  
library  
Galerie nationale du Canada  
bibliothèque

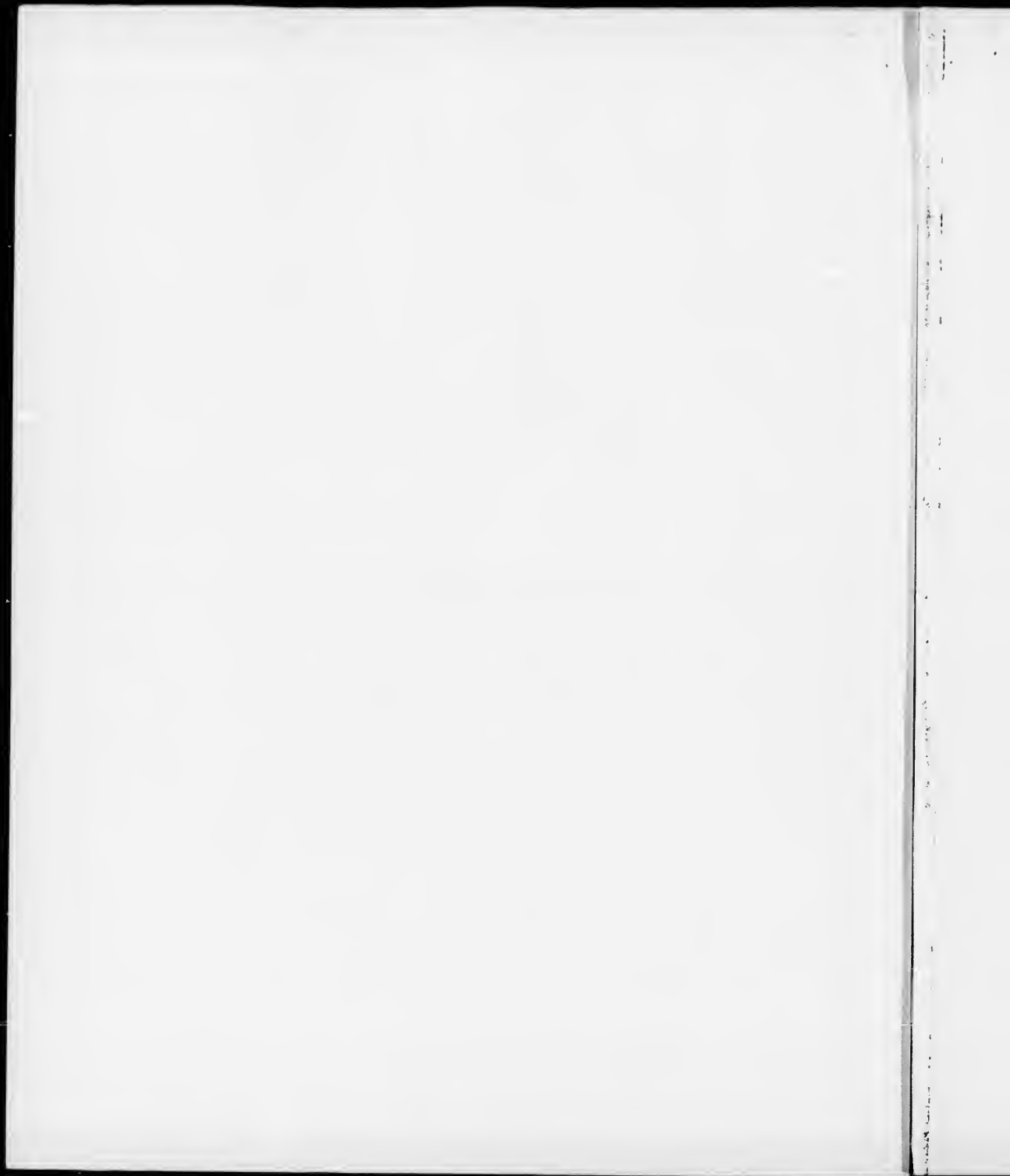
0NCA97-P4759



C  
N8600  
H.C.  
1888  
24  
c.1

## CATALOGUE.

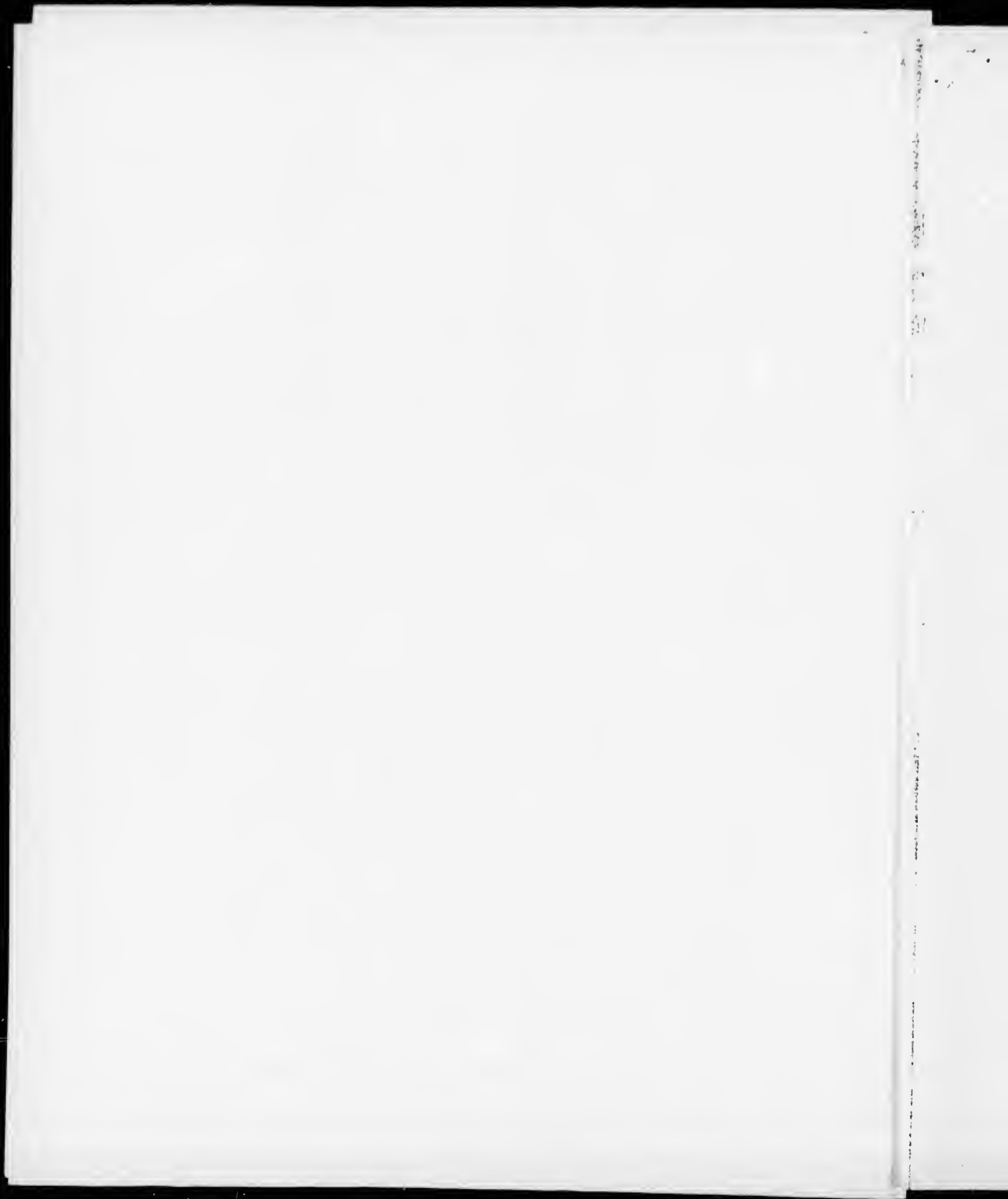
1. Trinity Church, Bermuda.....A. Hill -
2. Bar Harbor, Me..... " -
3. Garden at Salem, Mass.....G. Carter. -
4. Bar Harbor, Me.....A. Hill. -
5. Low Tide, Salem, Mass.....G. Carter. -
6. "The Porpoises," Bar Harbor.....A. Hill. -
7. Mount Royal Cemetery..... } Henry Carter -
8. Tower at St. Genevieve..... }  
• Interesting local scenes.
9. Misty morning near Providence, R. I.....A. Hill. -
10. Cane Brake, Bermuda..... " -
11. U. S. "Yantic" at Bar Harbor..... " -
12. Near Germantown, Pa..... " -
13. View at Providence, R. I..... " -



14. Confidences.....Stephen.  
A fine specimen of the English style.
15. An unspoken thought..... }  
A gem of colour. } E. Carter.
16. Innocence..... }  
 } E. Carter.
17. Flowers..... }  
17a. "..... } G. Carter.  
A difficult study.
18. View at Bar Harbor, Me.....A. Hill.
19. Beverly Wharf, Salem.....G. Carter.
20. Germantown, Pa.....E. Carter.
21. Croydon Mt.....Henry Carter.
22. Flowers.....G. Carter.
23. Chateauguay, P. Q.....Henry Carter.
24. Childhood's dreams.....E. Carter.  
A very fine piece of work.
25. Bryn-Mawr, Pa.....A. Hill.
26. Loch Fyne....."  
"
27. Farnyard, Devonshire....."  
".....E. Carter.

28. Bar Harbor.....A. Hill.
29. "The Dolphins," Bar Harbor.....Carter.
30. Flowers.....S. Stephen.
31. St. James's Church, Philadelphia.....A. Hill.
32. Germantown, Pa....."  
"....."
33. Palm Grove, Bermuda..... }  
34. Hamilton Bay, Bermuda..... } Carter.  
The finest pair in the collection.
35. "The Dolphins," Bar Harbor....."
36. Garden at Germantown.....E. Carter.  
A beautiful color study.
37. Montreal, from Peel Street.....Henry Carter.
38. Nayatt Point, R. I.....E. Carter.
39. Low Tide at Salem....."
40. Bryn-Mawr, Pa....."
41. View in Dorsetshire.....A. Hill.
42. Flowers.....E. Carter.  
Magnificent for color.





43. Old Bridge, Germantown..... E. Carter. —  
*Fine specimen of the French style.*
44. "The Willows," Salem..... " —
45. English Landscape..... D. Ryer. —
46. Bar Harbor, Me..... E. Carter. —
47. "..... " —
48. Crownwell Creek, Me..... " —
49. Bar Harbor..... " —
50. Memorial Church, Providence..... }  
*A fine interior effect.*
51. Still Life..... " —
52. Will he come?..... " —
53. Flowers..... " —
54. "Move eastward happy earth"..... Henry Carter. —
55. Pointe Claire, P. Q..... " —
56. Mount Croydon..... }  
*Dillicult sunset effect well caught.*
57. Low water, Salem..... " —

58. Fruit (Oil Colour)..... Carter. —
59. Garden at Salem..... " —
60. Providence, R. I..... " —
61. Sunset..... " —
62. Coot Cove, Dorset..... " —
63. Bar Harbor..... " —
64. Neponset, Mass..... Ryer. —
65. Fog, Bar Harbor..... G. Carter. —
66. Bar Harbor..... " —
67. "..... " —
68. "..... E. Carter. —

*Engravings, &c.*



