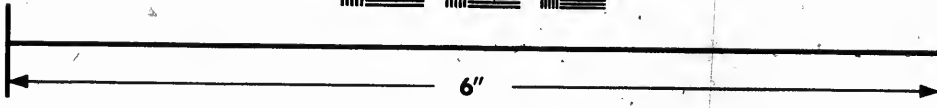
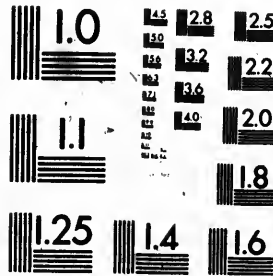


IMAGE EVALUATION
TEST TARGET (MT-3)



Canadian I



Photographic
Sciences
Corporation

23 WEST MAIN STREET
WEBSTER, N.Y. 14580
(716) 872-4503



128
125
122
120

**CIHM
Microfiche
Series
(Monographs)**

**ICMH
Collection de
microfiches
(monographies)**



Canadian Institute for Historical Microreproductions / Institut canadien de microreproductions historiques

01

© 1992

Technical and Bibliographic Notes / Notes techniques et bibliographiques

The Institute has attempted to obtain the best original copy available for filming. Features of this copy which may be bibliographically unique, which may alter any of the images in the reproduction, or which may significantly change the usual method of filming, are checked below.

L'Institut a microfilmé le meilleur exemplaire qu'il lui a été possible de se procurer. Les détails de cet exemplaire qui sont peut-être uniques du point de vue bibliographique, qui peuvent modifier une image reproduite, ou qui peuvent exiger une modification dans la méthode normale de filmage sont indiqués ci-dessous.

- Coloured covers/
Couverture de couleur
- Covers damaged/
Couverture endommagée
- Covers restored and/or laminated/
Couverture restaurée et/ou pelliculée
- Cover title missing/
Le titre de couverture manque
- Coloured maps/
Cartes géographiques en couleur
- Coloured ink (i.e. other than blue or black)/
Encre de couleur (i.e. autre que bleue ou noire)
- Coloured plates and/or illustrations/
Planches et/ou illustrations en couleur
- Bound with other material/
Relié avec d'autres documents
- Tight binding may cause shadows or distortion
along interior margin/
La reliure serrée peut causer de l'ombre ou de la
distorsion le long de la marge intérieure
- Blank leaves added during restoration may appear
within the text. Whenever possible, these have
been omitted from filming/
Il se peut que certaines pages blanches ajoutées
lors d'une restauration apparaissent dans le texte,
mais, lorsque cela était possible, ces pages n'ont
pas été filmées.

- Coloured pages/
Pages de couleur
- Pages damaged/
Pages endommagées
- Pages restored and/or laminated/
Pages restaurées et/ou pelliculées
- Pages discoloured, stained or foxed/
Pages décolorées, tachetées ou piquées
- Pages detached/
Pages détachées
- Showthrough/
Transparence
- Quality of print varies/
Qualité inégale de l'impression
- Continuous pagination/
Pagination continue
- Includes index(es)/
Comprend un (des) index
- Title on header taken from: /
Le titre de l'en-tête provient:
- Title page of issue/
Page de titre de la livraison
- Caption of issue/
Titre de départ de la livraison
- Masthead/
Générique (périodiques) de la livraison

- Additional comments: /
Commentaires supplémentaires:

This item is filmed at the reduction ratio checked below/
Ce document est filmé au taux de réduction indiqué ci-dessous.

10X	14X	18X	22X	26X	30X
<input type="checkbox"/>	<input type="checkbox"/>	<input type="checkbox"/>	<input checked="" type="checkbox"/>	<input type="checkbox"/>	<input type="checkbox"/>
12X	16X	20X	24X	28X	32X

The copy filmed here has been reproduced thanks to the generosity of:

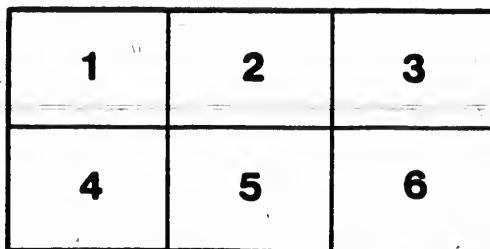
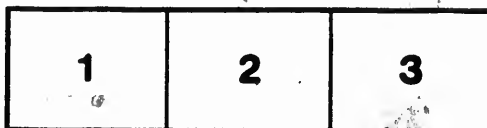
Manuscript Division,
National Archives of Canada

The images appearing here are the best quality possible considering the condition and legibility of the original copy and in keeping with the filming contract specifications.

Original copies in printed paper covers are filmed beginning with the front cover and ending on the last page with a printed or illustrated impression, or the back cover when appropriate. All other original copies are filmed beginning on the first page with a printed or illustrated impression, and ending on the last page with a printed or illustrated impression.

The last recorded frame on each microfiche shall contain the symbol \rightarrow (meaning "CONTINUED"), or the symbol ∇ (meaning "END"), whichever applies.

Maps, plates, charts, etc., may be filmed at different reduction ratios. Those too large to be entirely included in one exposure are filmed beginning in the upper left hand corner, left to right and top to bottom, as many frames as required. The following diagrams illustrate the method:



L'exemplaire filmé fut reproduit grâce à la générosité de:

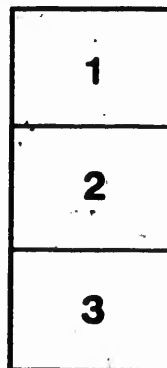
Division des manuscrits,
Archives nationales du Canada

Les images suivantes ont été reproduites avec le plus grand soin, compte tenu de la condition et de la netteté de l'exemplaire filmé, et en conformité avec les conditions du contrat de filmage.

Les exemplaires originaux dont la couverture en papier est imprimée sont filmés en commençant par le premier plat et en terminant soit par la dernière page qui comporte une empreinte d'impression ou d'illustration, soit par le second plat, selon le cas. Tous les autres exemplaires originaux sont filmés en commençant par la première page qui comporte une empreinte d'impression ou d'illustration et en terminant par la dernière page qui comporte une telle empreinte.

Un des symboles suivants apparaîtra sur la dernière image de chaque microfiche, selon le cas: le symbole \rightarrow signifie "A SUIVRE", le symbole ∇ signifie "FIN".

Les cartes, planches, tableaux, etc., peuvent être filmés à des taux de réduction différents. Lorsque le document est trop grand pour être reproduit en un seul cliché, il est filmé à partir de l'angle supérieur gauche, de gauche à droite, et de haut en bas, en prenant le nombre d'images nécessaire. Les diagrammes suivants illustrent la méthode.



95

MONTREAL DISTRICT AGRICULTURAL SOCIETY.

The District Ploughing Match took place on Thursday the 14th instant, on the Farm belonging to the heirs of the late Mr. James Ogilvie, Point St. Charles, now occupied by Mr. Robert Doig.

From the day being wet, only twelve ploughs started.

Two Ploughs competed in Class 31, for the Medal offered by the Society to the best of the ploughmen who obtained first prizes at former District Ploughing Matches.

Six Ploughs started for the three Premiums offered in Class 32.

And for Canadians only in Class 33, four Ploughs started.

The Judges were duly appointed and sworn, and after a most minute inspection of the work, awarded the Silver Medal in Class 31, to William Millar, of St. Therese.

Class 32.—First Prize to Robert Doig, of Point St. Charles, who held his own plough; Second Prize to James McConnochie, of Petite Cote, who held his own Plough; Third Prize to John Beckett, ploughman to Mr. Alexander Millar, of Montreal.

CANADIAN PLOUGHMEN.

Class 33.—First Prize to François Lauzon, River St. Pierre, who held his own Plough; second Prize, Mr. J. Courville, Current St. Mary; third Prize to Joseph Laprairie, ploughman to Mr. Lachappelle, Lachine.

Class 34.—For ploughmen who worked with Oxen, with or without a Driver. No Competitors in this Class.

Class 35.—To the owner of the best pair of Draft Oxen, exhibited at the Ploughing Match, and which should have been worked by the owner on his Farm the preceding three months.—No competitor in this Class.

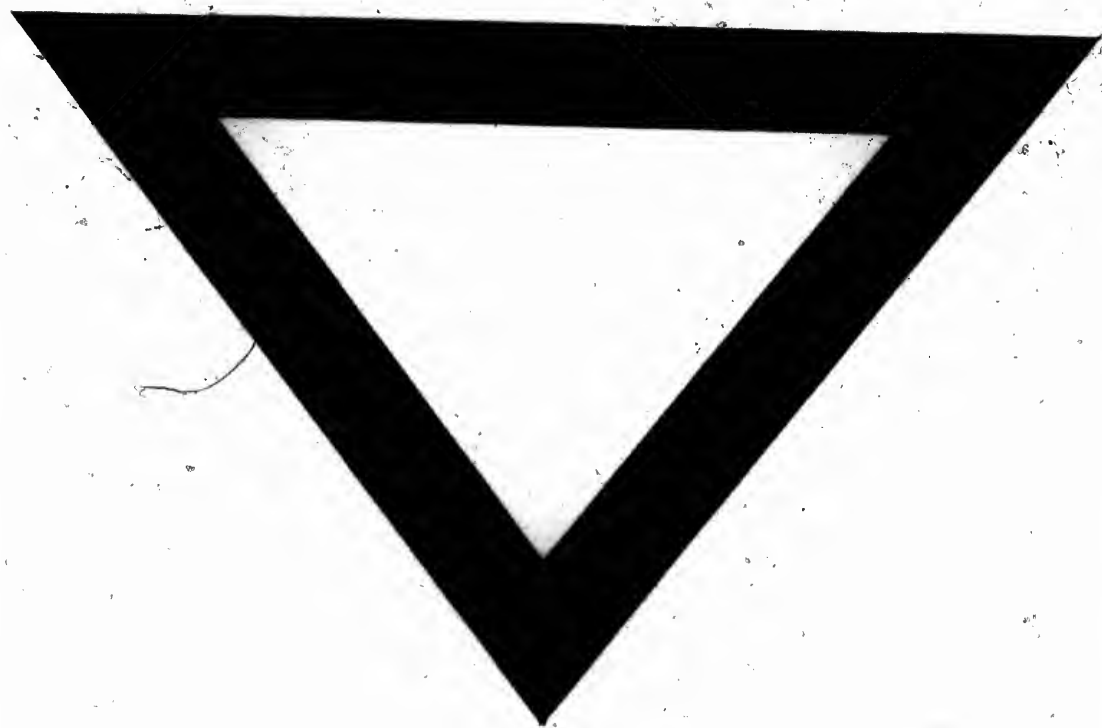
Class 36.—To the owner of the best pair of Draft Geldings, worked at the Ploughing Match.—First Prize to Mr. James Somerville, Lachine; second Prize to Mr. Archibald Ogilvie, River St. Pierre; third Prize to Mr. Wm. Evans, Cote St. Paul.

The Committee will have the Ploughing Match a month later next year, to afford Farmers an opportunity to finish taking in their Potatoes, that they may be able to attend. The Premiums were paid on the ground in presence of the Committee.

By Order,

WM. EVANS, Secy. &c.

Montreal, Oct. 25, 1830.



100