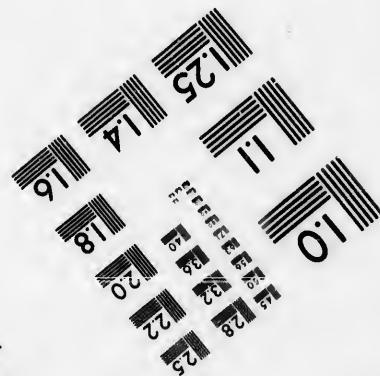
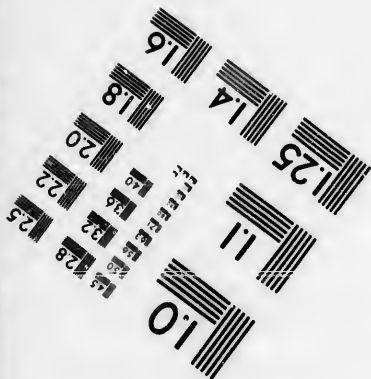
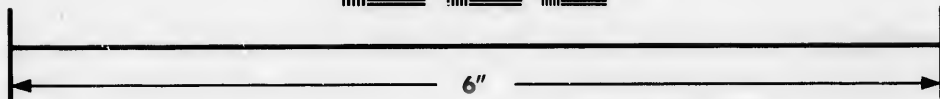
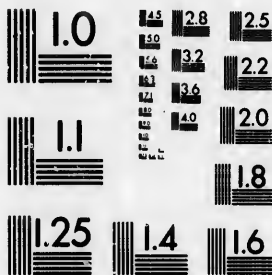


**IMAGE EVALUATION
TEST TARGET (MT-3)**



**Photographic
Sciences
Corporation**

23 WEST MAIN STREET
WEBSTER, N.Y. 14580
(716) 872-4503

1.5 1.8 2.0 2.2 2.5
2.8 3.2 3.6 4.0 4.5

**CIHM/ICMH
Microfiche
Series.**

**CIHM/ICMH
Collection de
microfiches.**



Canadian Institute for Historical Microreproductions / Institut canadien de microreproductions historiques

1.5 1.8 2.0 2.2 2.5
2.8 3.2 3.6 4.0 4.5

© 1986

Technical and Bibliographic Notes/Notes techniques et bibliographiques

The Institute has attempted to obtain the best original copy available for filming. Features of this copy which may be bibliographically unique, which may alter any of the images in the reproduction, or which may significantly change the usual method of filming, are checked below.

L'Institut a microfilmé le meilleur exemplaire qu'il lui a été possible de se procurer. Les détails de cet exemplaire qui sont peut-être uniques du point de vue bibliographique, qui peuvent modifier une image reproduite, ou qui peuvent exiger une modification dans la méthode normale de filmage sont indiqués ci-dessous.

- | | |
|--|--|
| <input type="checkbox"/> Coloured covers/
Couverture de couleur | <input checked="" type="checkbox"/> Coloured pages/
Pages de couleur |
| <input type="checkbox"/> Covers damaged/
Couverture endommagée | <input type="checkbox"/> Pages damaged/
Pages endommagées |
| <input type="checkbox"/> Covers restored and/or laminated/
Couverture restaurée et/ou pelliculée | <input type="checkbox"/> Pages restored and/or laminated/
Pages restaurées et/ou pelliculées |
| <input type="checkbox"/> Cover title missing/
Le titre de couverture manque | <input checked="" type="checkbox"/> Pages discoloured, stained or foxed/
Pages décolorées, tachetées ou piquées |
| <input type="checkbox"/> Coloured maps/
Cartes géographiques en couleur | <input type="checkbox"/> Pages detached/
Pages détachées |
| <input type="checkbox"/> Coloured ink (i.e. other than blue or black)/
Encre de couleur (i.e. autre que bleue ou noire) | <input type="checkbox"/> Showthrough/
Transparence |
| <input type="checkbox"/> Coloured plates and/or illustrations/
Planches et/ou illustrations en couleur | <input type="checkbox"/> Quality of print varies/
Qualité inégale de l'impression |
| <input checked="" type="checkbox"/> Bound with other material/
Relié avec d'autres documents | <input type="checkbox"/> Includes supplementary material/
Comprend du matériel supplémentaire |
| <input type="checkbox"/> Tight binding may cause shadows or distortion
along interior margin/
La reliure serrée peut causer de l'ombre ou de la
distorsion le long de la marge intérieure | <input type="checkbox"/> Only edition available/
Seule édition disponible |
| <input type="checkbox"/> Blank leaves added during restoration may
appear within the text. Whenever possible, these
have been omitted from filming/
Il se peut que certaines pages blanches ajoutées
lors d'une restauration apparaissent dans le texte,
mais, lorsque cela était possible, ces pages n'ont
pas été filmées. | <input type="checkbox"/> Pages wholly or partially obscured by errata
slips, tissues, etc., have been refilmed to
ensure the best possible image/
Les pages totalement ou partiellement
obscurcies par un feuillet d'errata, une pelure,
etc., ont été filmées à nouveau de façon à
obtenir la meilleure image possible. |
| <input checked="" type="checkbox"/> Additional comments: / [Printed ephemera] [4] p.
Commentaires supplémentaires: | |

This item is filmed at the reduction ratio checked below/
Ce document est filmé au taux de réduction indiqué ci-dessous.

10X	12X	14X	16X	18X	20X	22X	24X	26X	28X	30X	32X
			/								

The copy filmed here has been reproduced thanks to the generosity of:

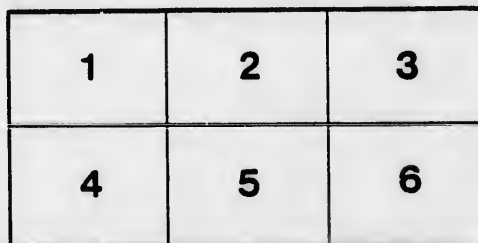
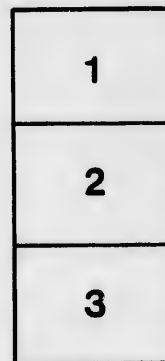
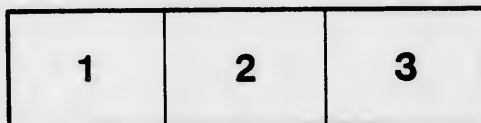
D. B. Weldon Library
University of Western Ontario
(Regional History Room)

The images appearing here are the best quality possible considering the condition and legibility of the original copy and in keeping with the filming contract specifications.

Original copies in printed paper covers are filmed beginning with the front cover and ending on the last page with a printed or illustrated impression, or the back cover when appropriate. All other original copies are filmed beginning on the first page with a printed or illustrated impression, and ending on the last page with a printed or illustrated impression.

The last recorded frame on each microfiche shall contain the symbol \rightarrow (meaning "CONTINUED"), or the symbol ∇ (meaning "END"), whichever applies.

Maps, plates, charts, etc., may be filmed at different reduction ratios. Those too large to be entirely included in one exposure are filmed beginning in the upper left hand corner, left to right and top to bottom, as many frames as required. The following diagrams illustrate the method:



L'exemplaire filmé fut reproduit grâce à la générosité de:

D. B. Weldon Library
University of Western Ontario
(Regional History Room)

Les images suivantes ont été reproduites avec le plus grand soin, compte tenu de la condition et de la netteté de l'exemplaire filmé, et en conformité avec les conditions du contrat de filmage.

Les exemplaires originaux dont la couverture en papier est imprimée sont filmés en commençant par le premier plat et en terminant soit par la dernière page qui comporte une empreinte d'impression ou d'illustration, soit par le second plat, selon le cas. Tous les autres exemplaires originaux sont filmés en commençant par la première page qui comporte une empreinte d'impression ou d'illustration et en terminant par la dernière page qui comporte une telle empreinte.

Un des symboles suivants apparaîtra sur la dernière image de chaque microfiche, selon le cas: le symbole \rightarrow signifie "A SUIVRE", le symbole ∇ signifie "FIN".

Les cartes, planches, tableaux, etc., peuvent être filmés à des taux de réduction différents. Lorsque le document est trop grand pour être reproduit en un seul cliché, il est filmé à partir de l'angle supérieur gauche, de gauche à droite, et de haut en bas, en prenant le nombre d'images nécessaire. Les diagrammes suivants illustrent la méthode.

ails
du
difier
une
nage

rata
D

elure,
à

32X

The Baconian + Club

LONDON, CANADA.



FIFTH ANNUAL DINNER

— AT —

“The Grigg,”

FRIDAY, 17TH MAY, 1889.

“The end of labor is to gain leisure.”—Aristotle.

(Southam & Brierley, Pys.)

"He was the very genius of famine"—Henry IV.
"How ridiculous a play would be of which a hungry man
were the hero!"—Sydney Smith.

MENU

"Mirth becomes a feast."

SOUP

St. Julien

FISH

Boiled Salmon Trout, with Lobster Sauce

SALADS

Lobster and Potato

BOILED

Beef Tongue Yorkshire Ham Southdown Leg of Mutton, with French Capers

ROASTS

Ribs of Beef, with Yorkshire Pudding
Spring Lamb, with Mint Sauce
Spring Chicken, with Brown Gravy
Filet of Veal, Stuffed with Oysters

ENTREES

Orange Fritters, Rum Sauce Fried Sweet Breads, Cream Sauce
Macaroni and Cheese Fricasseeed Frogs, Wine Sauce

RELISHES

Crosse & Blackwell's Pickles Tomato Catsup Chutney Sauce Chow Chow
Worcester Sauce Durkee's Salad Dressing

VEGETABLES

French Peas Boiled and Mashed Potatoes Asparagus on Toast
Sweet Corn

PUDDINGS AND PASTRY

English Plum Pudding, Brandy Sauce Lemon Pie
Green Apple Pie Peach Tart

DESSERT

Florida Oranges Figs Pine Apple Ice Cream Bananas
Nuts and Raisins Macaroons Apples
Rochfort Cheese Assorted Cakes Lemon and Port Wine Jelly
Charlotte Russe

JAVA COFFEE

GREEN AND BLACK TEA

"What is a man,
If his chief good, and market of his time,
Be but to sleep and feed?"—Hamlet.

"Come, give us a taste of your quality!"—Shak.
"Ay, marry, now unuzzle your wisdom."—As you like it.
"Oh, for a forty-parson power!"—Byron.

TOASTS

"With mug in hand to wet his whistle."—COLTON.

"The Queen."

"Bless'd in her children's—her subjects' love."

"The Baconian Club."

C. G. JARVIS.

"Our Country—The Situation."

N. W. ROWELL. A. D. HARDY.

"There's no glory like his who saves his country."—*Tennyson*.

"Lord Bacon."

JOHN STEVENSON.

"Would you praise Cæsar, say—Cæsar; go no further."—*Ant. and Cleo.*

"Education."

JOHN DEARNESS.

R. M. GRAHAM.

"Knowledge to one is a goddess both heavenly and high,
To another only an excellent cow yielding the butter he wants."—*Schiller*.

"The Learned Professions."

DR. BEEMER.

R. A. GRAY.

EDMUND WELD.

"Wouldst thou gild refined gold, or paint the lily?"—*Shak.*

"Journalism."

WM. THOMPSON.

ALEX. MCQUEEN.

"The diameter of the press is the diameter of civilization itself."—*Hugo*.

"Our Physical Culture."

R. A. LITTLE.

R. A. BAVLY.

"The physical is the foundation for the mental."

"Infinite pains are taken to produce a winner of the Derby, but none to produce a modern athlete."—*Herbert Spencer*.

"The Ladies."

T. G. MURPHY.

J. P. MOORE.

G. N. WEEKES.

"I'll drink to her as long as there is a passage
in my throat."—*Twelfth night*.

"Hercules himself must yield to odds."—*Hen. 1st*.

"Rats II"

THE REST OF 'EM.

"How now? A rat!"—*Hamlet*.

"All's well that ends well."



OFFICERS :

PRESIDENT—C. G. JARVIS.

VICE-PRESIDENT—C. T. GLASS.

SEC. TREAS.—U. A. BUCHNER.

EXECUTIVE COMMITTEE :

R. A. GRAY.

R. A. BAYLY.

T. G. MURPHY.

GASUALTIES.

SONGS :

R. A. GRAY.

A. D. HARDY.

C. T. GLASS.

RECITALS :

A. D. HARDY.

EDMUND WELD.

“ The morning steals upon the night,
Melting the darkness.”—*Tempest*.

“ I have a good eye, I can see a church by daylight.”—*Much Ado*.

