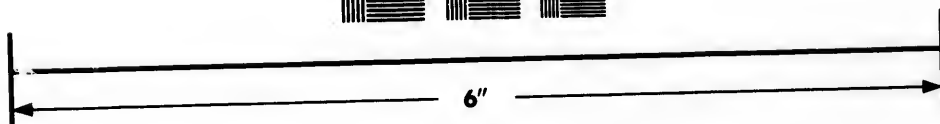
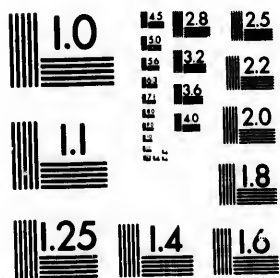


**IMAGE EVALUATION  
TEST TARGET (MT-3)**



**Photographic  
Sciences  
Corporation**

23 WEST MAIN STREET  
WEBSTER, N.Y. 14591  
(716) 872-4503



**CIHM/ICMH  
Microfiche  
Series.**

**CIHM/ICMH  
Collection de  
microfiches.**



**Canadian Institute for Historical Microreproductions / Institut canadien de microreproductions historiques**



**© 1984**

Technical and Bibliographic Notes/Notes techniques et bibliographiques

The Institute has attempted to obtain the best original copy available for filming. Features of this copy which may be bibliographically unique, which may alter any of the images in the reproduction, or which may significantly change the usual method of filming, are checked below.

L'Institut a microfilmé le meilleur exemplaire qu'il lui a été possible de se procurer. Les détails de cet exemplaire qui sont peut-être uniques du point de vue bibliographique, qui peuvent modifier une image reproduite, ou qui peuvent exiger une modification dans la méthode normale de filmage sont indiqués ci-dessous.

- Coloured covers/  
Couverture de couleur
- Covers damaged/  
Couverture endommagée
- Covers restored and/or laminated/  
Couverture restaurée et/ou pelliculée
- Cover title missing/  
Le titre de couverture manque
- Coloured maps/  
Cartes géographiques en couleur
- Coloured ink (i.e. other than blue or black)/  
Encre de couleur (i.e. autre que bleue ou noire)
- Coloured plates and/or illustrations/  
Planches et/ou illustrations en couleur
- Bound with other material/  
Relié avec d'autres documents
- Tight binding may cause shadows or distortion  
along interior margin/  
La reliure serrée peut causer de l'ombre ou de la  
distortion le long de la marge intérieure
- Blank leaves added during restoration may  
appear within the text. Whenever possible, these  
have been omitted from filming/  
Il se peut que certaines pages blanches ajoutées  
lors d'une restauration apparaissent dans le texte,  
mais, lorsque cela était possible, ces pages n'ont  
pas été filmées.
- Additional comments:  
Commentaires supplémentaires:

- Coloured pages/  
Pages de couleur
- Pages damaged/  
Pages endommagées
- Pages restored and/or laminated/  
Pages restaurées et/ou pelliculées
- Pages discoloured, stained or foxed/  
Pages décolorées, tachetées ou piquées
- Pages detached/  
Pages détachées
- Showthrough/  
Transparence
- Quality of print varies/  
Qualité inégale de l'impression
- Includes supplementary material/  
Comprend du matériel supplémentaire
- Only edition available/  
Seule édition disponible
- Pages wholly or partially obscured by errata  
slips, tissues, etc., have been refilmed to  
ensure the best possible image/  
Les pages totalement ou partiellement  
obscurcies par un feuillet d'errata, une pelure,  
etc., ont été filmées à nouveau de façon à  
obtenir la meilleure image possible.

This item is filmed at the reduction ratio checked below/  
Ce document est filmé au taux de réduction indiqué ci-dessous.

10X	12X	14X	16X	18X	20X	22X	24X	26X	28X	30X
			X							

The copy filmed here has been reproduced thanks to the generosity of:

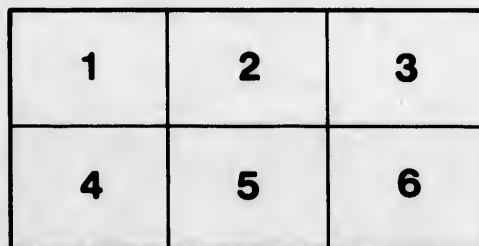
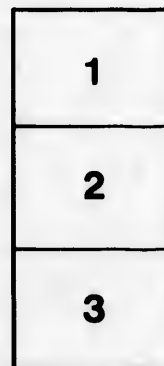
University of British Columbia Library

The images appearing here are the best quality possible considering the condition and legibility of the original copy and in keeping with the filming contract specifications.

Original copies in printed paper covers are filmed beginning with the front cover and ending on the last page with a printed or illustrated impression, or the back cover when appropriate. All other original copies are filmed beginning on the first page with a printed or illustrated impression, and ending on the last page with a printed or illustrated impression.

The last recorded frame on each microfiche shall contain the symbol  $\rightarrow$  (meaning "CONTINUED"), or the symbol  $\nabla$  (meaning "END"), whichever applies.

Maps, plates, charts, etc., may be filmed at different reduction ratios. Those too large to be entirely included in one exposure are filmed beginning in the upper left hand corner, left to right and top to bottom, as many frames as required. The following diagrams illustrate the method:



L'exemplaire filmé fut reproduit grâce à la générosité de:

University of British Columbia Library

Les images suivantes ont été reproduites avec le plus grand soin, compte tenu de la condition et de la netteté de l'exemplaire filmé, et en conformité avec les conditions du contrat de filmage.

Les exemplaires originaux dont la couverture en papier est imprimée sont filmés en commençant par le premier plat et en terminant soit par la dernière page qui comporte une empreinte d'impression ou d'illustration, soit par le second plat, selon le cas. Tous les autres exemplaires originaux sont filmés en commençant par la première page qui comporte une empreinte d'impression ou d'illustration et en terminant par la dernière page qui comporte une telle empreinte.

Un des symboles suivants apparaîtra sur la dernière image de chaque microfiche, selon le cas: le symbole  $\rightarrow$  signifie "A SUIVRE", le symbole  $\nabla$  signifie "FIN".

Les cartes, planches, tableaux, etc., peuvent être filmés à des taux de réduction différents. Lorsque le document est trop grand pour être reproduit en un seul cliché, il est filmé à partir de l'angle supérieur gauche, de gauche à droite, et de haut en bas, en prenant le nombre d'images nécessaire. Les diagrammes suivants illustrent la méthode.

ils  
u  
ifier  
ne  
age

ata

elure,  
à

2X

Daggett



*G. W. Anderson*

CATALOGUE  
OF  
BRITISH, COLONIAL, AND FOREIGN  
Postage Stamps.

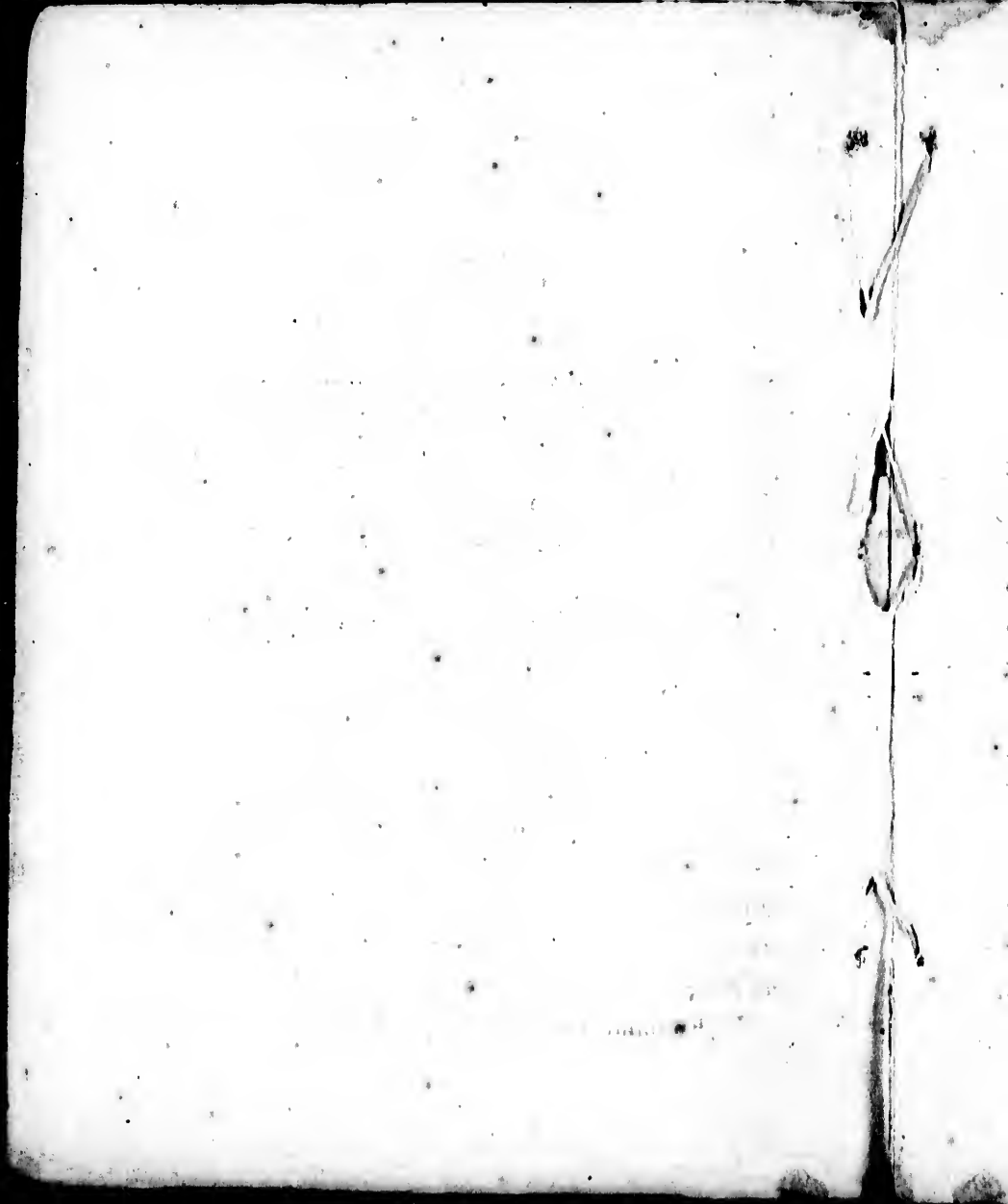
BY  
MOUNT BROWN.

COMPRISING UPWARDS OF 1200 VARIETIES.

*[Entered at Stationers' Hall.]*

PRICE ONE SHILLING.  
POST FREE, 13 STAMPS.

LONDON:  
F. PASSMORE, 124, CHEAPSIDE.  
UNDER THE TREE.  
1862.



## PREFACE.

---

RECOGNIZING the want of an accurate list of postage stamps, I have, with the kind assistance of many friends (to whom I tender my thanks), compiled the present Catalogue. Every care has been taken to render it as perfect as possible, but should any collector possess a stamp which is unnoticed, I should esteem the favour of its description in order that it may be inserted in the next edition.

The following particulars may be interesting: Posts or couriers were established at a very early period for the safe and speedy transmission of public intelligence. They originated in the regular couriers established by Cyrus, who erected post-houses throughout the kingdom of Persia. An institution under the name of "Cursus publicus" was established at Rome by Augustus.

In England, the plan commenced in the reign of



Edward IV., in 1481, when riders on post-horses went stages of the distance of twenty miles from each other in order to procure the king the earliest intelligence of the events that passed during the war with the Scots. The first chief postmaster was Mr. Thomas Randolph, appointed by Queen Elizabeth in 1581, and the office of foreign postmaster was created by James I. In 1635, Charles I. erected a letter office for England and Scotland, but this extended only to a few of the principal roads, and the postmasters on each road were required to furnish horses for the conveyance of letters at the rate of  $2\frac{1}{2}$ d. per mile.

At length, in 1649, Mr. Edward Prideaux, Attorney-General for the Commonwealth, instituted a weekly conveyance of letters to all parts of the kingdom, and in 1657 the post-office was placed nearly on its present footing, the rate of postage then adopted continuing till the reign of Queen Anne. Even as late as 1735, the post was only transmitted three days a-week between Edinburgh and London, and on one occasion, the *metropolis only sent a single letter*, which was for a Scotch banker, named Ramsay.

Previous to the introduction of a uniform penny rate; the postage was charged on a sliding scale, increasing in proportion to the distance. Thus, a letter under eight miles was 2*d.*, under fifteen, 4*d.*, and so on, and differential rates were used for England, Scotland, and Ireland. However, in 1837, Sir Rowland Hill broached his plan of "Penny Postage," which was adopted after investigation by a Committee of the House of Commons. The new Postage Law, by which a uniform rate of 4*d.* per letter, was tried as an experiment, came into operation December 5th, 1839; and the uniform rate of 1*d.* per letter of  $\frac{1}{2}$  oz. weight, commenced in January, 1840.

The General Post-office in London, was originally established in Cloak Lane, near Dowgate Hill, whence it was transferred to the Black Swan, in Bishopsgate Street. On occasion of the great fire of 1666, it was removed to Brydges Street, Covent Garden, and afterwards to Sir Robert Viner's mansion, in Lombard Street, where it continued until 1829, when it was transferred to St. Martin's-le-Grand. It now occupies the site of an ancient college and sanctuary. The building was commenced in 1825,

from designs by R. Smirke Esq., and completed in 1829. The street letter-boxes were erected in March 1855, and the first one placed at the corner of Fleet Street and Farringdon Street.

Such is a slight sketch of this Institution. In conclusion, I would suggest that collectors furnish themselves with *two copies* of this Catalogue, one to keep by them for reference; the other (with the stamps *not wanted*, marked through), to forward to their friends, that they may see what is required—the book will go by book-post for 1*d.*, and thus save much trouble, time, and expense. I shall be glad to exchange postage-stamps, or give any information about them, that lays in my power; but persons wishing for a reply, must enclose a postage-stamp for that purpose.

M. BROWN.

124, CHEAPSIDE,

May, 1862.

*Stamps were used.*

*1 England 1839*

*2 France 1849*

*3 Twinn Taxis 1850*

eted in  
March  
f Fleet

tution.

s fur-

ne, one

h the

ard to

red—

save

glad

ation

sons

amp

Y.

## ABBREVIATIONS.

---

Col.	..	..	..	Coloured.
Imp.	..	..	..	Impression.
Rect.	..	..	..	Rectangular.
Obl.	..	..	..	Oblong.
Oct.	..	..	..	Octagonal.

The word "*Name*" signifies that the designation of the country is impressed on the stamp. The word "*Essay*" comprehends those stamps having either accidental difference from those used, or that were printed for issue, but never circulated.

Where not expressly mentioned, the coloured impressions are on white paper.

Antigua

1862 Head of Queen V. to right Name  
value in letters

6d green  
1 red

CATALOGUE OF BRITISH, COLONIAL, AND  
FOREIGN POSTAGE STAMPS.

**Argentine Confederation.**

ADHESIVE STAMPS.

1860.—*Name. Arms, (rising sun, &c.) "Confederation Argentina" above, value below. Col. imp. rect., small Greek bordering.*

5 centav. carmine.

1861.—*Similar stamp to last, with value and bordering larger.*

5 centav. red, 10 c. green, 15 c. blue.

1862.—*Name, Arms, (cap of Liberty on pole in small oval, wreathed, &c.), encircled by "Republica Argentina." Col. imp., rect.*

5 centavos, rose, 10 c. green, 15 c. blue.

VARIETY.

*Head and cap of Liberty to left; inscription "Corrientes" above. Col. imp. on blue paper. Rect.*

1 real, M.C. indigo.

**Austria.**

ADHESIVE STAMPS.

1850.—*Arms (double eagle, &c., displayed on shield), col. imp. rect.*

1 krenzer yellow, 2 kr. black, 3 kr. red, 6 kr. brown, 9 kr. blue.

Name

1858.—*Head of Emperor in white relief to left. Col. imp., rect.*

2 kr. yellow, 2 kr. orange, 3 kr. black, 3 kr. green, 5 kr. red, 10 kr. brown, 15 kr. blue.

1861.—*Head of Emperor in white relief to right. Col. imp., oval.*

2 kreuzer yellow, 3 kr. green, 5 kr. red, 10 kr. brown, 15 kr. blue.

#### COMPLEMENTARY STAMPS.

1850.—*St. Andrew's Cross in colour on white ground. Oblong.*

Green, red.

1861.—*St. Andrew's Cross in white relief on coloured ground. Oblong.*

Yellow, orange, red, green, brown, blue, black.

*Similar stamp to last, with dots in white relief.*

Orange, 4 dots, red, 2 dots, green, 1 dot, brown, 1 dot, brown, 3 dots, blue, 3 dots, blue, 4 dots, black, 2 dots.

#### GAZETTE STAMPS.

1857.—*Zeitungs-stempel. Head of Mercury to left. Col. imp., square.*

Yellow. Pink. Blue.

1858.—*Head of Emperor in white relief to left, in square. Col. imp., rect.*

Blue. Lavender.

1861.—*Head of Emperor in white relief to right, in oval. Col. imp., rect.*

Lavender.

N.B.—The above are exclusively for interior postage.

*Kais-Kon Zeitungs-stempel, Arms, (double eagle displayed) col. imp., square.*

1 kreuzer blue, 1 kr. black, 2 kr. red, 2 kr. brown, 2 kr. green, 4 kr. red.

#### ENVELOPE STAMPS.

1861.—*Head of Emperor in white relief to right. Col. imp., oval.*

3 kreuzer green, 5 kr. red, 10 kr. red-brown, 15 kr. blue, 20 kr. orange, 25 kr. dark brown, 30 kr. violet, 35 kr. light brown.

### Austrian Italy.

#### ADHESIVE STAMPS.

1850.—*Arms (double eagle, &c., displayed on shield). Col. imp., rect.*

3 centes yellow, 5 c. orange, 10 c. black, 15 c. red, 30 c. brown, 45 c. blue.

1858.—*Head of Emperor in white relief to left. Col. imp., rect.*

2 soldi yellow, 3 sol. black, 5 sol. red, 10 sol. brown, 15 sol. blue.



1861.—*Head of Emperor in white relief to right.*  
Col. imp., oval.

5 soldi red.

#### ENVELOPE STAMPS.

1861.—*Head of Emperor in white relief to right.*  
Col. imp., oval.

3 soldi green, 5 sol. red, 10 sol. brown, 15 sol. blue, 20 sol. orange, 25 sol. dark brown, 30 sol. violet, 35 sol. pale brown.

N.B.—Since the annexation of Lombardy to the Kingdom of Italy in 1859, the above are used only in Venetia.

### Baden.

#### ADHESIVE STAMPS.

1850. *Name, figure indicating value.* Black imp.  
square.

1 kreuzer buff, 3 kr. yellow, 6 kr. green, 9 kr. white.

1855.—*Similar stamp.*

1 kreuzer white, 3 kr. green, 3 kr. blue, 6 kr. yellow, 9 kr. pink.

1860.—*Name, arms (shield and crown supported by winged griffins).* Col. imp., square.

1 kreuzer black, 3 kr. blue, 6 kr. red, 9 kr. rose, 3 kr. pink, 6 kr. blue  
9 kr. stone.

N.B.—The shades of colour vary in 3 and 6 kr.

#### ENVELOPE STAMPS.

1857.—*Head of Grand Duke in white relief to right.*  
Col. imp. oval.

3 kreuzer blue, 6 kr. yellow, 9 kr. rose, 12 kr. brown, 18 kr. red.

1862.—*Similar stamp.*

3 kreuzer rose, 6 kr. blue, 9 kr. stone.

## Bahamas.

### ADHESIVE STAMPS.

1861.—*Name, and interinsular postage. Head of Queen Victoria, crowned. Col. imp., rect.*

1d. lake-red.

1862.—*Name, Head of Queen Victoria, crowned. Col. imp., rect.*

4d. rose, 6d. grey.

## Barbados.

### ADHESIVE STAMPS.

— *Name, Britannia sitting, value not indicated. Col. imp. on blue paper, rect.*

Red, blue.

— *Similar stamp. Col. imp., on white paper, rect.*

Red, blue, light green, dark green.

1862.—*Similar stamp, value indicated.*

6d. red, 1s. black.

## Babaria.

### ADHESIVE STAMPS.

*Name, figure in a square indicating value. Black imp., square.*

1 kreuzer white, 3 kr. blue, 6 kr. violet, 9 kr. red.

*Name, figure in a circle indicating value. Black imp., on coloured paper. Square.*

1 kreuzer pink, 3 kr. blue, 6 kr. marone, 9 kr. dark green.

1851.—*Similar to last. Coloured imp. on white paper. Rect.*

1 kreuzer rose, 3 kr. blue, 6 kr. marone, 9 kr. green, 12 kr. red, 18 kr. yellow.

1862.—*Similar to last.*

3 kr. pink, 6 kr. blue, 9 kr. stone.

## Belgium.

### ADHESIVE STAMPS.

1849.—*Head of King. Col. imp. rect., value in white letters.*

10 cents dark brown, 20 c. blue.

1850-62.—*Head of King in oval. Col. imp. rect. value in coloured letters.*

1 centime green, 10 c. brown, 20 c. blue, 40 c. red.

## Bergedorf.

### ADHESIVE STAMPS.

1861.—*Name, arms (demi-eagle and demi-castle encircled) Black imp. on coloured paper. Square —the dimension of stamp increasing with its value.*

$\frac{1}{2}$  schillinge indigo, 1 sch. white,  $1\frac{1}{2}$  sch. yellow, 3 sch. violet on rose, 4 sch. fawn.

## Brazil.

### ADHESIVE STAMPS.

*Large upright figures in oval indicating value. Black imp., square.*

30, 60, 90 (reis).

*Italian figures indicating value. Black imp., oblong. Cut corners.*

10, 30, 60, 90, 180, 300, 600 (reis).

1861.—*Upright figures indicating value. Black imp., oblong.*

10, 20, 30, 60, 90, 180, 300, 600 (reis).

*Similar to last. Col. imp.*

10 blue, 30 blue, 280 vermillion, 430 orange (reis).

## Bremen.

### ADHESIVE STAMPS.

1855.—*Name, arms, (key in shield) value each side in figures. Black imp., rect.*

Stadt post-amt, 3 grote blue (for the town of Bremen). 5 grote rose, 7 grote yellow.

*Name, arms (key in oval) col. imp., rect.*

5 s. gr. green.

1861 —*Name, arms (key in oval) surrounded by wavy border. Black imp., rect.*

10 grote black.

ENVELOPE STAMPS.

1861.—*Name, arms (crown and key in shield) value not indicated and struck with hand-stamp. Oval.*

Stadt post-amt (for the town of Bremen).

The value is one grote.

**British Columbia and Vancouver's Island.**

ENVELOPE STAMPS.

1861.—*Name, Head of Queen Victoria to left. Col. imp., rect.*

2½d. pink.

**British Guiana.**

ADHESIVE STAMPS.

*Name, vessel in shield, value above, and Motto "DAMUS PATIMUS QUE VICISSIM" below, date not indicated. Black imp. on coloured paper, large rect.*

1 cent magenta, 4 cents small blue.

*Name, vessel in oblong. "DAMUS PETIMUS" above, and "QUE VICISSIM" below. Black imp. on coloured paper. Oblong.*

4 cents magenta.

1853.—*Name, vessel in oval, encircled with "DAMUS PETIMUS QUE VICISSIM," date indicated. Col. imp., rect.*

1 cent. red, 4 c. blue.

in shield) value  
stamp. Oval.

1860.—Name, vessel in garter and motto as last, date indicated. Col. imp., rect.

1 cent rose, 1 c. brown, 2 c. red, 4 c. blue, 8 c. flesh, 8 c. pink, 12 c. pearl grey, 12 c. black, 24 c. green.

Vancouver's

1867. Black imp. on yel. paper  
2 cents ESSAY.

1853.—Similar stamp to above bearing same date.

1 cent. black.

to left. Col.

## Brunswick.

### ADHESIVE STAMPS.

1852.—Name, arms (horse and crown) in oval. Col. imp., oblong.

1 silb. gr. rose, 2 s. gr. blue, 3 s. gr. vermilion.

1854.—Similar to last. Black imp., oblong.

‡ silb. gr. brown, † s. gr. white, 1 s. gr. yellow, 1 s. gr. orange, 2 s. gr. dark blue, 3 s. gr. pink, 3 s. gr. light brown.

lotto "DAMUS  
not indicated.  
t.

' above, and  
on coloured

1860.—Crown over value, in oval. Black imp., small square.

‡ gute gr. brown.

h "DAMUS  
uted. Col.

### ENVELOPE STAMPS.

— Horse under post-horn and "post-schein," in oval. Col. imp., oval.

6 Pfennige red.

1860.—*Arms (horse and crown) in white relief. Col. imp., oval.*

1 silber groschen yellow, 2 s. gr. blue, 3 s. gr. rose.

## Buenos Ayres.

### ADHESIVE STAMPS.

*Name, steamship in oval. Col. imp., oblong.*

Blue, red, brown, green, yellow.

1861.—*Name, head of Liberty in circle. Col. imp., oblong.*

4 reales green, 1 peso blue, 2 pesos scarlet.

## Canada.

### ADHESIVE STAMPS.

1856.—*Name, various effigies. Col. imp., rect.*

1d. rose (head of Queen Victoria). 6d. black, (bust of Prince Albert).  
6d. sterling. 7½ cy. (bust of Queen Victoria). 10d. blue, (bust of Colum-  
bus). 12d. black, (bust of Queen Victoria).

*Name, beaver under crown. Col. imp., oblong.*

3d. vermilion.

1860.—*Name, various effigies. Col. imp., rect.*

1 cent rose (head of Queen Victoria). 10 c. black (bust of Prince  
Albert). 12½ c. green (bust of Queen Victoria). 17 c. blue (bust of  
Columbus).

*Name, beaver under crown. Col. imp., oblong.*

5 cents vermilion.

## ENVELOPE STAMPS.

1861.—*Name, head of Queen Victoria to left, in white relief. Col. imp., oval.*

5 cents vermilion, 10 c. marone.

## Cape of Good Hope.

## ADHESIVE STAMPS.

*Name, Britannia sitting. Col. imp., triangular.*

1d. crimson, 1d. red, 4d. black, 4d. blue, 6d. lilac, 1s. green.

## VARIETY.

*Similar to last, but printed with wood-block.*

1d. red, 4d. light blue, 4d. dark blue, 4d. red.

## Ceylon.

## ADHESIVE STAMPS.

1857.—*Name, head of Queen Victoria to left. Col. imp., rect.*

3d. lilac, (on glazed paper), 1d. blue, 2d. green, 5d. red-brown, 6d. chocolate-brown, 6d. violet-brown, 10d. red, 1s. pale-violet.

*Similar stamp to last. Oct.*

4d. rose-lake, 8d. marone, 9d. brown, 1s. 9d. green, 2s. blue.



## ENVELOPE STAMPS.

1861-2.—*Name, head of Queen Victoria to left, in white relief. Col. imp., round.*

4d. pink, 5d. red, 6d. chocolate.

*Similar to last. Oval.*

1d. blue, 2d. green, 8d., 9d., 1s., yellow, 2s.

*Similar to last. Rect.*

9d. dark brown.

## Chili.

## ADHESIVE STAMPS.

1860-2.—*Name, head to left. Col. imp., rect.*  
1 centavo yellow, 5 c. black, 5 c. brown, 5 c. red, 10 c. blue, 20 c. dark green.

## Confederate States of America.

## ADHESIVE STAMPS.

## NEW ORLEANS.

1861.—*Figure indicating value in centre, encircled by "New Orleans Post-Office," and bearing the name of J. L. Riddell at top and bottom. Col. imp., rect.*

2 cents blue, 5 c. brown.

## NASHVILLE.

*Name, stars and figure indicating value in oval, encircled by "W. D. McNish, P.M., Tenn," Col. imp., rect.*

5 cents crimson.

## CONFEDERATE STATES.

1862.—*Name, head of Jefferson Davis to right, in oval. Col. imp., rect.*

5 cents blue, 5 c. green (larger size).

*Name, head of Colquhoun to right, in oval. Col. imp., rect.*

1 cent scarlet.

## Cuba.

(See Spain.)

## Denmark.

## ADHESIVE STAMPS.

1852.—*Value encircled. Col. imp., square.*

2 rigsbank skilling blue.

*Arms, (crown above crossed swords and sceptre) encircled with wreath. Col. imp., square.*

4 rbs. cinnamon.

ft, in white

rect.  
20 c. dark

ca.

ed. by  
aring  
ttom.

1860.—*Arms, (crown above crossed swords and sceptre) encircled with wreath, dotted ground. Col. imp., square.*

2 s. blue, 4 s. brown, 8 s. green, 16 s. lilac.

*Similar to last. Wavy ground.*

4 s. brown, 8 s. green.

#### ESSAYS.

*Head of Mercury to left, in circle. Black imp., square.*

4 R.B.S. (1½ sch. c).

*Head of King to right, in circle. Black imp., square.*

8 R.B.S. (2½ sch. c).

#### DUCHY OF SCHLESWIG-HOLSTEIN.

##### ADHESIVE STAMPS.

1848.—*Arms, double-headed eagle, in centre, white oval with arms in relief. Letters S. H. at top corners. Col. imp., rect.*

1 schilling blue, 2 s. pink.

N.B.—These stamps were only issued during the short time of the rebellion of 1848.

#### ICELAND.

1862.—*Bear in shield, inscription "Vulnere" below, value not indicated. Blue imp., rect.*

#### POSSESSIONS.

#### DANISH WEST INDIES.

*Islands of St. Thomas and St. Croix.*1860.—*Similar stamp to that used in Denmark.*

3 cents red (dotted ground), 3 cents red (wavy ground).

**Dutch Guiana.***(See Holland.)***England.***(See Great Britain.)***Finland.***(See Russia.)***France.****ADHESIVE STAMPS.****REPUBLIC.**1849.—*Name, head of Republic to left. Col. imp., rect.*10 cents cinnamon, 15 c. green, 20 c. black, 25 c. blue, 40 c. vermillion, 1 franc lake, 1 fr. carmine.**ESSAYS.**1858.—*Similar to last, value not indicated, inscription at top "ESSAI, 1858." Col. imp., rect.*

Green, yellow-brown.

*Name, head of Republic to left. Col. imp., rect.*  
 10 cents marone, 15 c. brown, 20 c. blue, 1 franc black.

## PRESIDENCY.

1852.—*Name, (Repub. Franc) Head of President  
 Napoleon to left. Col. imp., rect.*  
 10 cents cinnamon, 25 c. blue.

## EMPIRE.

1854-62.—*Name, Head of Emperor to left. Col.  
 imp., rect.*  
 1 cent olive green, 5 c. light green, 10 c. cinnamon, 20 c. blue, 25 c. blue, 40 c. orange, 80c. carmine, 80 c. lake, 1 franc carmine.

## CHIFFRE TAXE.

1859.—*Name, figure indicating value. Black imp.,  
 square.*  
 10 centimes (die), 10 centimes (lithograph).

N.B.—This stamp is employed for letters insufficiently prepaid.

## FRENCH COLONIES.

1860.—*Name (Colonies de l'Empire Français) encir-  
 cling eagle and crown. Col. imp., square.*  
 10 cents cinnamon, 40 c. vermilion.

## NEW CALEDONIA.

1860.—*Name, Head of Emperor. Col. imp. rect.*  
 10 centimes grey.

## WEST INDIA POSSESSIONS.

*Head of Emperor to left. Col. imp. on pink ground, rect.*

10 cents. orange, 20 c. deep indigo.

## REUNION.

1862.—*Name, date indicated. Black imp. on coloured paper.*

30 cent. green.

## Frankfort.

(See "Germany.")

## Germany.

## NORTHERN STATES.

Electorate of Hesse-Cassel; Grand Duchies of Mecklenburg-Strelitz, and Saxe-Weimar; Duchy of Saxe-Altenburg; and Principalities of Lippe-Detmold, Lippe-Schauenburg, Reuss-Elder, Reuss-Younger, Schwarzburg-Sondershausen, Schwarzburg-Rudolstadt, &c.

COMPREHENDED UNDER THE OFFICE OF THURN AND TAXIS.

## ADHESIVE STAMPS.

1850.—*Figure indicating value. Black imp. on coloured paper, square.*

‡ silb. grosch. red-brown, † silb. gr. flesh, † silb. gr. green, 1 silb. gr. blue, 2 silb. gr. rose, 3 silb. gr. yellow.

1860-62.—*Similar to last. Col. imp. on white paper, square.*

$\frac{1}{4}$  silb. groschen red,  $\frac{1}{4}$  silb. gr. green, 1 silb. gr. light blue, 1 silb. gr. pink, 2 silb. gr. rose, 2 silb. gr. blue, 3 silb. gr. russet, 5 silb. gr. lilac, 10 silb. gr. vermilion.

#### ENVELOPE STAMPS.

1861.—*Name of office (THURN U. TAXIS) figure in white relief indicating value. Col. imp., oval.*

$\frac{1}{4}$  silb. gr. orange, 1 s. gr. rose, 2 s. gr. blue, 3 s. gr. stone.

#### SOUTHERN STATES.

Free City of Frankfort, Landgraviate of Hesse-Homburg, Grand Duchy of Hesse-Darmstadt; Principalities of Hohenzollern-Hechingen, and Hohenzollern-Sigmaringen, and Duchies of Nassau, Saxe-Meiningen, Saxe-Coburg Gotha, &c.

COMPREHENDED UNDER THE OFFICE OF THURN AND TAXIS.

#### ADHESIVE STAMPS.

1850—*Figure indicating value. Black imp. on coloured paper, square.*

1 kreuzer green, 3 kr. pale lavender, 3 kr. deep blue, 6 kr. rose, 9 kr. yellow.

1860-62.—*Similar to last. Col. imp. on white paper, square.*

1 kreuzer blue, 1 kr. green, 3 kr. blue, 3 kr. rose, 6 kr. rose, 6 kr. blue, 9 kr. yellow, 9 kr. stone, 15 kr. lilac, 30 kr. vermilion.

## GAZETTE STAMPS.

*Figure indicating value in horn. Black on coloured paper, square.*

1 kr. brown-yellow.

## ENVELOPE STAMPS.

1861.—*Name of office (THURN U. TAXIS) figure in white relief indicating value. Col. imp., Oct.*

2 kreuzer yellow, 3 kr. rose, 6 kr. blue, 9 kr. stone.

## Granada Confederation.

## ADHESIVE STAMPS.

1859.—*Name, arms in shield encircled, in bordering the words "Correo Granadina correos nacionales." Col. imp., oct.*

2½ cent green, 5 c. puce, 10 c. cinnamon, 10 c. red, 20 c. blue, 1 peso carmine.

1860.—*Stamps of similar design, with name and figures indicating value larger.*

5 cent puce, 10 c. cinnamon, 20 c. blue.

1861.—*Name, arms in shield, round which, in oval, are the words "estados unidos de Nueva Granada" and in bordering the words, "correos nacionales." Col. imp., rect.*

2½ centavos black, 5 c. buff-yellow, 10 c. blue, 20 c. red-brown, 1 peso rose.

1862.—*Name, arms in shield, encircled. In bordering the words "E. U de Columbiacorreos nacionales." Col. imp., oct.*

5 cent green, 10 cent blue, 20 cent rose.

N.B.—The shades of colour in all the above vary greatly.



## Great Britain.

ADHESIVE STAMPS, (First issued, 13th May, 1840.)

*Head of Queen Victoria to left, letters in bottom corners only. Col. imp., rect.*

1d. black, 1d. red-brown, 1d. red, 2d. blue.

*Similar stamp, letters in each corner.*

1d. black, V.R. (official stamp).

*Similar to last, letters in bottom corners only, white line above and below head of Queen.*

2d. blue.

*Similar to last, letters in each corner.*

2d. blue.

*Head of Queen Victoria to left, in white relief. Col. imp., oct.*

10d. brown.

*Head of Queen Victoria to left. Col. imp., rect.*

4d. rose, 6d. lilac, 1s. green.

1862.—*Similar to last, letters in each corner of stamp.*

3d. pink, 4d. vermilion, 9d. straw.

## ESSAYS.

1860.—*Head of Queen Victoria to left, in triangular shield. Col. imp., rect.*

1½d. lake.

1862.—*Head of Queen Victoria to left, surrounded by scroll. Col. imp., rect.*

3d. rose.

## ENVELOPE STAMPS.

1840.)  
in bottom  
27th April, 1840.—*Vignette by W. Mulready, R.A., over the cover. Col. imp., rect.*

1d. black, 2d. blue.

er.  
29th Jan., 1841.—*Head of Queen Victoria to left, in white relief, without date. Col. imp., oval.*

1d. brown, 1d. pink, 2d. blue.

only, white  
*Similar stamp. Octagonal.*

6d. violet, 1s. green.

*Similar to last, date indicated, oval.*

1d. dark brown, 1d. pink, 2d. blue.

er.  
f. Col.  
*Similar stamp. Col. imp., on blue paper, date indicated, oval.*

1d. pink, 2d. blue.

*Similar stamp. Col. imp., date indicated, oct.*

6d. violet, 1s. green.

f stamp.  
*Similar stamp. Col. imp. on blue paper, date indicated, oct.*

6d. violet, 1s. green.

angular  
*Head of Q. Victoria to left in white relief. Col. imp.*

3d. rose (wavy border), 4 vermilion (round).

## ESSAYS.

led by  
1837.—*Watermark design over the envelope, except a white oval space in centre. At equal distances round the oval, four small ovals, in*

which are words "one penny, not to exceed one ounce," round a crown and V. R., but differently placed in each oval. Col. imp.

1d. light yellowish ochre.

Watermark design over all the envelope, except a white oblong space in centre. At each top corner of oblong a quarter circle, in which are words, "V. R., London district Post," and in each bottom in a quarter circle, the words "to carry not exceeding 6 ounces," Col. imp., value in words.

2d. bright green.

1838.—Head of Queen Victoria in white relief, encircled by the words, "Postage 1d., half oz.," Col. imp., oval.

1d. blue, 1d. black.

1860.—Head of Queen Victoria to left, in white relief. Col. imp., triangular.

1d. rose.

## Greece.

### ADHESIVE STAMPS.

1861.—Name, head of Mercury to right. Col. imp. on white paper, except the 10 and 40, which are on blue paper. Rect.

1 lept. marone, 2 l. cinnamon, 5 l. green, 10 l. red, 20 l. blue, 40 l. violet, 80 l. rose.

## Grenada.

## ADHESIVE STAMPS.

1860.—*Name, head of Queen Victoria, crowned, to left.*  
*Col. imp., rect.*

1d. green, 6d. lake.

## Hamburg.

## ADHESIVE STAMPS.

1859.—*Name, Arms (castle) under figure indicating value.* *Col. imp., rect.*

$\frac{1}{2}$  schilling black, 1 sch. chocolate, 2 sch. red, 3 sch. blue, 4 sch. green, 7 sch. orange, 9 sch. yellow.

## Hanover.

## ADHESIVE STAMPS.

1851.—*Name, (value in figures on shield, under arms,)*  
*Black imp. on plain coloured paper, rect.*

1 guten gr. blue, 1 g. gr. green, 1-30 thaler crimson, 1-30 th. rose, 1-15 th. blue, 1-10 th. orange.

1858.—*Similar to last. Black imp., on white paper,*  
*with coloured diaper pattern.*

1 guten gr. green, 1-30 thaler lake, 1-15 th. blue, 1-10 th. orange.

*Name, figure (signifying value, under crown) in oval,*  
*Col. imp. on white paper, with black diaper pattern,*  
*rect.*

3 Pfennige rose.

not to exceed  
V. R., but  
Col. imp.

velope, ex-  
At each  
in which  
et Post,"  
ircle, the  
ounces,"

elief, en-  
alf oz.,"

relief.

imp.  
which

iolet,

*Similar to last without diaper pattern.*

3 Pfennige rose.

*Name, hunting horn under crown. Black imp., rect.*  
 ¼ groschen.

1862.—*Name, head of King to left. Col. imp., rect.*  
 1 groschen rose, 2 gr. blue, 3 gr. yellow-brown, 10 gr. green, 1 gr. dark  
 rose, 3 gr. brown-drab.

#### ENVELOPE STAMPS.

1857.—*Name, head of King to left, in white relief,  
 value in figures at bottom of stamp. Oval.*  
 1 guter groschen green, 1 silb. gr. rose, 2 silb. gr. blue, 3 silb. gr.  
 yellow.

1861.—*Similar stamp, value in figures each side.*  
 1 groschen rose, 2 gr. blue, 3 gr. yellow, 3 gr. brown.

#### LOCAL STAMPS.

*Hunting horn below trefoil, in relief on yellow paper.*  
*Col. imp., round.*

Bestell geld frei, green.

*Horse prancing, in relief on yellow paper. Col. imp.,  
 round.*

Bestell geld frei, green,

**Hesse.**

(See Germany.)

## Holland.

### ADHESIVE STAMPS.

1852.—*Head of King to right. Col. imp., rect.*

5 c. dark blue, 5 c. light blue, 10 c. red, 15 c. orange.

### ESSAY.

5 c. black.

### POSSESSIONS.

#### DUTCH GUIANA.

1861.—*Crown surrounded by wreath, date indicated.*

*Black imp., rect.*

10 c. rose, 10 c. dark neutral, 10 c. lavender.

## Honolulu.

(See Sandwich Islands.)

## India.

### ADHESIVE STAMPS.

1854.—*Name, head of Queen Victoria to left, in square.*

*Col. imp., rect.*

½ anna blue, 1 anna red, 2 annas green, 4 annas red (blue head) encircled.

1860.—*Name, head of Queen Victoria to left, in oval.*

*Col. imp., rect.*

½ anna blue, 1 anna brown, 2 annas yellow, 2 annas pink, 4 annas blue, 4 annas black, 8 annas red.

## NEWSPAPER STAMPS.

1860.—*Name, head of Queen Victoria to left, in oval.*  
*Col. imp., rect.*  
 8 pies lilac.

## ENVELOPE STAMPS.

1861.—*Head of Queen Victoria to left, in white relief.*  
*Col. imp. on white paper, round.*  
 $\frac{1}{4}$  anna blue, 1 anna brown.

*Similar to last. Col. imp. on blue paper, round.*  
 $\frac{1}{4}$  anna blue, 1 anna brown.

## Ionian Islands.

## ADHESIVE STAMPS.

1860.—*Name in Greek characters. Head of Queen Victoria to left, surrounded by garter. Col. imp., value not designated. Rect.*

Yellow (value  $\frac{1}{4}$ d.), blue (value 1d.), lake (value 2d).

## Italy.

## ADHESIVE STAMPS.

The stamps of the Kingdom of Sardinia included under this denomination, are also used in the annexed provinces, excepting the Neapolitan, which have special stamps.

1851.—*Head of King to right, white, in coloured oval.*  
*Inscription white, col. imp., rect.*

5 cent black, 20 cent blue, 40 cent red.

1852.—*Head of King to right, in relief, on coloured paper. Rect.*

5 cent green, 20 c. blue, 40 c. rose.

1855.—*Head of King to right, white relief in white oval, remainder of stamp coloured. Rect.*

5 cent. green, 20 c. blue, 40 c. red.

1856.—*Head of King to right, white relief, in white oval, inscription white. Col. imp., rect.*

5 cent dark green, 10 c. brown, 20 c. blue, 40 c. red, 80 c. yellow, 3 lire golden.

N.B.—The last-named vary from the lightest to darkest shades of colour.

#### NEWSPAPER STAMPS.

1861.—*Figure in white relief, in white oval, indicating value. Black imp., rect.*

1 cent, 2 cents.

#### NEAPOLITAN PROVINCES.

1861.—*Head of King to right in white relief in white oval. Col. imp., rect.*

¼ tornese yellow, ¼ tornese green, ¼ grano light brown, 1 gra. black, 2 gra. blue, 5 gra. vermillion, 10 gra. cinnamon, 20 gra. yellow, 50 gra. grey.

## Jamaica.

#### ADHESIVE STAMPS.

1860.—*Name, head of Queen Victoria to left. Col. imp., rect.*

1d. blue, 2d. rose, 4d. orange, 6d. blue, 1s. brown.

*3<sup>d</sup> stamp missed out here*



## La Plata.

(See Argentine Confederation.)

## Liberia.

### ADHESIVE STAMPS.

- 1860.—Name, Goddess of Liberty sitting, and ship, in circle. Col. imp., large rect.  
6 cents pink, 12 c. lilac, 12 c. blue, 24 c. green.

## Lombardy.

(See Austrian Italy.)

## Lubeck.

### ADHESIVE STAMPS.

- 1859.—Name, arms (double eagle) figure indicating value in each corner. Col. imp., rect.  
 $\frac{1}{2}$  schilling violet, 1 sch. orange-red, 2 sch. brown, 2 $\frac{1}{2}$  sch. red, 4 sch. black, 4 sch. dark green.

## Luxembourg.

### ADHESIVE STAMPS.

- 1852.—Head of Grand-Duke to left, in oval. Col. imp., rect.  
10 centimes black, 1 silb. groschen rose, 1 silb. gr. red.

1859.—*Name, arms (lion rampant on barred shield, under crown). Col. imp., rect.*

2 cents black, 4 c. yellow, 10 c. blue, 12½ c. rose, 25 c. marone, 30 c. violet-red, 37½ c. green, 40 c. vermilion.

## Luzon.

(See Spain.)

## Malta.

### ADHESIVE STAMPS.

1861.—*Name, head of Queen Victoria to left. Col. imp. on glazed paper, rect.*

One halfpenny buff.

## Mauritius.

### ADHESIVE STAMPS.

1857.—*Name (Britannia sitting), value not indicated. Col. imp., rect.*

Red, dark green, magenta.

1858.—*Name, head of Queen Victoria to left, (badly executed) on ground of slanting lines from right to left. Col. imp., rect.*

1d. red, 2d. blue.;

*Similar stamp to last, ground composed of perpendicular lines only. Col. imp., rect.*

2d. blue.

*Similar to last, ground composed of perpendicular, horizontal, and slanting lines crossing each other.*  
Col. imp., rect.

2d. blue.

*Name, head of Queen Victoria to left, block printed, Greek bordering.* Col. imp., rect.

1d. red, 2d. blue.

*Name (Britannia sitting).* Col. imp., rect.

6d. blue, 1s. vermillion.

1861.—*Name, head of Queen Victoria to left, in oval.*  
Col. imp., rect.

1c. brown, 2d. blue, 4d. rose, 9d. lilac, 1s. grey.

#### ENVELOPE STAMPS.

*Name, head of Queen Victoria to right, in white relief,*  
Col. imp.

6d. purple (round), 9d. purple marone (9 sided).

### Mecklenburg.

#### ADHESIVE STAMPS.

1860.—*Name, arms.* Col. imp., square..

1 schilling red (very small), 3 sch. yellow, 5 sch. blue.

#### ENVELOPE STAMPS.

*Name, arms, in white relief.* Col. imp., oval.

1 schilling red, 1½ sch. green, 3 sch. yellow, 5 sch. blue.

## Mexico.

### ADHESIVE STAMPS.

*Name, head of President on coloured ground, in oval.*

*Col. imp. on white paper, rect.*

$\frac{1}{2}$  real blue, 1 rl. yellow, 2 rl. green, 4 rl. red, 8 rl. violet.

1861.—*Similar stamp. Black imp. on coloured paper, rect.*

$\frac{1}{2}$  real light brown, 1 rl. green, 2 rl. pink, 4 rl. yellow, 8 rl. brown.

*Similar stamp. Col imp. on coloured paper, rect.*

4 reales red on yellow, 8 rl. green on brown.

## Modena.

### ADHESIVE STAMPS.

*Arms (eagle displayed under crown surrounded by wreath). Black imp. on coloured paper, rect.*

5 cent. green, 9 c. v.g. violet, 10 c. rose, 10 c. brown, 15 c. violet, 15 c. yellow, 25 c. primrose, 40 c. blue, 1 lira white.

### NEWSPAPER STAMP.

*Arms (eagle displayed under crown) encircled by "Tassa Gazzetta." Black imp., square.*

10 cent.

### PROVISIONAL GOVERNMENT.

1859.—*Name arms, (Savoy Cross in shield under crown, &c.) Col. imp., rect.*

5 cent green, 15 c. chocolate, 20 c. lilac, 40 c. rose, 80 c. orange.

## Moldavia.

### ADHESIVE STAMPS.

1862.—*Arms, (Bull's head over horn). Col. imp., executed with hand-stamp, inscription "Porto Scrisorei." Rect.*

40 paras blue, 62 paras green, 80 paras red.

### NEWSPAPER STAMP.

*Similar to last. Inscription "Porto Gazetei."*

5 paras black.

## Montevideo.

### ADHESIVE STAMPS.

*Name, arms (sun with rays, in circle). Col. imp. oblong. Value twice in figures, and inscription, in block letters.*

120 centesimos blue, 180 c. green.

*Similar stamp, value once, in figures, and inscription in Roman letters:*

60 centesimos pink, 60 c. brown, 80 orange.  
100 c. carmine, 120 c. blue, 240 c. red.

## Naples.

*(See Two Sicilies).*

## Natal.

### ADHESIVE STAMPS.

*Name, crown, and value in relief on coloured paper.*

*Large rect.*

1d. yellow, 1d. blue, 3d. rose, 6d. green, 1s. drab.

1860.—*Name, head of Queen Victoria crowned, in oval.*

*Col. imp., rect.*

1d. red, 3d. blue, 6d. green.

## Nebis.

### ADHESIVE STAMPS.

1861.—*Name, three female figures. Col. imp., rect.*

*The groundwork and borders differing in each stamp.*

1d. lake, 4d. rose, 6d. lilac, 1s. green.

## New Brunswick.

### ADHESIVE STAMPS.

1857.—*Name, crown in centre, round which, in four equidistant stars, are rose, shamrock and thistle.*

*Col. imp., diamond shape.*

3d. red, 6d. yellow, 1s. violet.

1861.—*Name, head of Queen crowned, in oval. Col.*

*imp., rect.*

5 cents green, 10 c. red.

*Name, bust of Prince of Wales in Scotch dress. Col. imp., rect.*

17 cents black.

*Name. Col. imp., oblong.*

1 cent brown (railway engine), 12½ c. blue (steam vessel).

#### ESSAY.

*Name, head of Connell, (the then Postmaster-General), in oval. Col. imp., rect.*

5 cents chocolate.

## New Caledonia.

(See France).

## Newfoundland.

#### ADHESIVE STAMPS.

*Name, crown surrounded by four equidistant stars. Col. imp., square.*

1d. brown-violet, 5d. brown-violet.

*Name, rose, shamrock and thistle, in midst of three joined circles. Col. imp., triangular.*

3d. green.

*Name, rose, shamrock and thistle bouquet in midst of circle. Red imp., rect. Each stamp differing slightly in design.*

2d., 4d., 6d., 6½d., 8d., 1s.

Col.

1862.—*Similar stamp. Crimson imp.*  
2d., 4d., 6d., 6½d., 8d., 1s.

## New Granada.

(*See Granada Confederation*).

## New South Wales.

### ADHESIVE STAMPS.

*View of Sydney, encircled with motto, "Sigillum Nov. Camb. Aust."* Col. imp., rect.

1d. red, 2d. blue-black, 2d. pale blue, 3d. brown. 3d. green, 3d. flesh.

*Name, head of Queen Victoria, with wreath.* Col. imp.  
on blue paper. Rect.

1d. red, 2d. blue, 3d. green, 6d. brown, 8d. orange.

*Similar stamp.* Col. imp., on white paper.

1d. orange, 2d. blue, 3d. green, 6d. brown.

*Name, Head of Queen Victoria, with diadem, the word South at top of stamp.* Col. imp., rect.

1d. dark brown, 1d. red, 2d. blue, 3d. light green, 3d. dark green.

*Name, head of Queen Victoria, with words, "New South Wales" overarched.* Col. imp., rect.

2d. blue.

*Name, head of Queen Victoria in circle, surrounded by hexagon.* Col. imp., large square.

5d. green, 6d. light violet, 6d. dark violet, 8d. orange, 1s. red, 1s. blue,  
1s. rose.

*The 9<sup>d</sup> orange the 1<sup>st</sup> red blue & rose are octagonal*



*Name, bust of Queen Victoria, crowned and sceptred.  
Col. imp., round.*

5s. violet.

*Name, head of Queen Victoria wreathed, no value indicated, printed in two colours on white paper. Oval.*

REGISTERED. Red and blue, yellow and blue.

## New Zealand.

### ADHESIVE STAMPS.

*Name, bust of Queen Victoria crowned, in circle. Col.  
imp. on blue paper. Rect.*

1d. red, 2d. blue, 1s. green.

*Similar stamp. Col. imp., on white paper.*

1d. vermilion, 2d. blue, 6d. brown, 1s. green. *60*

## Norway.

### ADHESIVE STAMPS.

1855.—*Arms (lion rampant holding an axe, on shield;  
and crown) in circle. Col. imp., rect.*

4 skilling blue.

1856.—*Name, head of King to <sup>left(?)</sup>right, in circle. Col.  
imp. rect.*

2 skilling yellow, 3 sk. lilac, 4 sk. blue, 8 sk. lake.

## Nova Scotia.

### ADHESIVE STAMPS.

*Name, head of Queen Victoria, in diamond, set in square bordering. Col. imp., on blue paper, square.*

1d. red-brown.

*Name, crown surrounded by four equidistant stars, having rose, shamrock and thistle in their centres. Col. imp., square.*

3d. blue, 6d. green, 1s. violet.

1860.—*Name, head of Queen Victoria to left, in circle. Col. imp., rect.*

1 cent black, 5 c. blue.

*Name, bust of Queen Victoria crowned, in oval. Col. imp., rect.*

3½ cents green, 10 c. red, 12½ c. black.

## Oldenburg.

### ADHESIVE STAMPS.

1852.—*Name, value on shield under coat of arms, Black imp., rect.*

¼ silb. gr. green, 1-30 thaler. blue, 1-15 th. rose, 1-10 th. yellow.

1860.—*Name, arms on shield under crown, in oval. value in figures each side. Black imp., on coloured paper. Rect.*

½ groschen green, 1 gr. blue, 2 gr. rose, 3 gr. yellow.

1861.—*Similar stamp. Col. imp., on white paper.*  
 $\frac{1}{4}$  groschen yellow,  $\frac{1}{4}$  gr. green,  $\frac{1}{4}$  gr. marone, 1 gr. blue, 2 gr. black,  
 2 gr. red, 3 gr. orange.

#### ENVELOPE STAMPS.

1861.—*Name, shield and crown in white relief. Col. imp., oval.*

$\frac{1}{4}$  groschen brown, 1 gr. blue, 2 gr. rose, 3 gr. yellow, 1 gr. pink, 2 gr. blue, 3 gr. stone.

### Pacific Steam Navigation Co.

(See Peru.)

### Papal States.

#### ADHESIVE STAMPS.

*Arms (Tiara and keys), black imp., various forms.*

$\frac{1}{4}$  Baj. violet (oval). 1 Baj. green (oval). 2 Baj. green (oblong). 3 Baj. cinnamon (oval). 4 Baj. yellow (round). 5 Baj. rose (rect). 6 Baj. white (octagonal). 7 Baj. blue (octagonal). 8 Baj. white (oct.)

*Similar stamp. Col. imp., oblong scroll.*

50 Baj. blue, 1 scudo vermilion. Bollo straordinario.

### Parnia.

#### ADHESIVE STAMPS.

*Name, arms (Fleur-de-lis) in circle with crown, Greek bordering at side. Black imp. on coloured paper, rect.*

5 centes yellow, 10 c. flesh, 15 c. rose, 25 c. purple, 40 c. blue.

*Similar stamps. Col. imp. on white paper.*

5 centes orange, 15 c. scarlet, 25 c. red-brown.

1858.—*Name (Duc di Parma Piac. Ecc.) over crown and shield. Col. imp., rect.*

15 cent pink-red, 25 c. brown, 40 c. blue.

#### PROVISIONAL GOVERNMENT.

1859.—*Name (Stati Parmensi). Col. imp. on white paper. Oct.*

5 centesimi light green, 5 c. dark green, 6 c. carmine, 9 c. blue, 10 c. brown, 20 c. blue, 40 c. red, 80 c. orange.

## Peru.

#### ADHESIVE STAMPS.

*Arms (Llama, tree and Cornucopia quartered on shield, wreathed) on coloured ground in circle. Col. imp., square, bordering formed of double lines.*

1 dinero slate, 1 peseta red-brown.

*Similar stamp. Bordering formed of single lines.*

1 dinero blue, 1 peseta rose,  $\frac{1}{4}$  peso yellow.

*Similar stamp, arms on white ground in circle.*

1 peseta red.

#### VARIETY.

*Steam vessel in oval. Col. imp., large oblong. Letters*

*P. S. N. C., in corners.*

$\frac{1}{4}$  oz. 1 real blue, 1 oz. 2 reales carmine.

N.B.—Used by the Pacific Steam Navigation Company's vessels only, between the different places on the coast.

## ESSAYS.

*Arms (Llama, &c., on shield), in white relief. Black imp., square.*

1 dinero white, 1 peseta white.

## Philippine Islands.

(See Spain).

## Poland.

(See Russia.)

## Porto Rico.

(See Spain).

## Portugal.

### ADHESIVE STAMPS.

*Head of Queen Maria II., to left, in white relief. Col. imp.*

5 reis brown, 25 reis blue, 50 reis green, 100 reis lilac.

1858-62.—*Head of King Pedro V., to right, in white relief. Col. imp.*

5 reis brown, 5 reis dark chocolate, 25 reis blue, 25 reis rose, 50 reis green, 100 reis lilac.

N.B.—Except the blue stamp of 25 reis, all those bearing the head of Pedro V., are in present use.

## Prince Edward Island.

### ADHESIVE STAMPS.

1860.—*Name, head of Queen Victoria. Col. imp., rect, each stamp differently designed.*

1d. orange, 2d. rose, 3d. blue, 6d. green. 9d. currency equal to 6d. stg. lilac.

## Prussia.

### ADHESIVE STAMPS.

*Head of King to right. Col. imp. on coloured paper, rect., groundwork composed of crossed lines.*

4 pfenninge green, 6 pf. vermilion.

*Similar stamp. Black imp. on coloured paper.*

1 silber gr. lake, 2 s. gr. blue, 3 s. gr. yellow.

1857.—*Similar stamp. Col. imp. on white paper.*

4 pfenninge green, 6 pf. vermilion, 1 silb. gr. rose, 2 s. gr. blue, 3 s. gr. orange.

*Similar stamp to last, coloured groundwork (block print).*

1 silber gr. rose, 2 s. gr. blue, 3 s. gr. orange.

1861.—*Name, arms (eagle holding sceptre and orb).*

*Col. imp., rect.*

4 pfenninge green, 6 pf. vermilion.

*Similar stamp, oval.*

1 silb. gr. rose, 2 s. gr. blue, 3 s. gr. stone.

## ENVELOPE STAMPS.

*Head of King to right, in white relief. Col. imp., the three first oval, the others oct., and having two threads across each stamp.*

1 silber groschen rose, 2 s. gr. blue, 3 s. gr. yellow, 4 s. gr. brown, 5 s. gr. lilac, 6 s. gr. green, 7 s. gr. red.

1857.—*Similar stamps without the threads.*

1 silb. gr. rose, 2 s. gr. blue, 3 s. gr. yellow, 4 s. gr. brown, 5 s. gr. lilac, 6 s. gr. green, 7 s. gr. red.

1861.—*Name, arms (eagle holding sceptre and orb), in white relief. Col. imp., oval.*

1 silb. gr. rose, 2 s. gr. blue, 3 s. gr. stone.

N.B.—The Duchies of Anhalt-Bernbourg, Anhalt-Coethem, und Anhalt-Dessau, and Principalities of Birkenfeld, and Waldeck, employ the stamps of Prussia.

## Queensland.

## ADHESIVE STAMPS.

1861.—*Name, bust of Queen Victoria crowned, in oval. Col. imp., rect.*

1d. red, 2d. blue, 3d. brown, 6d. green, 1s. dark purple. Registered (without value) maize.

## Romagne.

## ADHESIVE STAMPS.

1859.—*Name, figure indicating value. Black imp., on coloured paper, rect.*

½ Bai. lemon, 1 Bai. grey, 2 Bai. yellow, 3 Bai. green, 4 Bai. red, 5 Bai. lilac, 8 Bai. rose, 20 Bai. blue.

N.B.—The above were discontinued in April 1860, and those of the Kingdom of Italy used instead.

## Roman States.

(See *Papal States.*)

## Russia.

### ADHESIVE STAMPS.

1858.—*Arms (double-eagle crowned, holding sceptre and orb, over two horns coupled), white relief in oval. Col. imp., rect.*

10 kop brown, centre blue, 20 kop blue, centre orange, 30 kop rose, centre green.

### ENVELOPE STAMPS.

1854-62.—*Arms (as above). Blue imp. on white paper, round.*

5 and 1 kop (for the City of St. Petersburg).

1858.—*Arms (as above) in white relief. Col. imp., round.*

10 and 1 kop black, 20 and 1 kop blue, 30 and 1 kop rose.

N.B.—The extra 1 kop to each stamp represents the price of the envelope.

## FINLAND.

### ADHESIVE STAMPS.

*Arms (crowned lion holding scimitar in shield, under crown), in oval. Col. imp., rect.*

5 kop blue, 10 kop rose.



## ENVELOPE STAMPS.

*Arms (crowned lion holding scimitar in shield under crown, and over horns coupled). Col. imp., rect.*

5 kop blue, 10 kop rose, 20 kop black.

## POLAND.

## ADHESIVE STAMPS.

*Similar to Russia.*

Zalot kop 10, blue, centre red.

## ENVELOPE STAMPS.

*Arms (similar to Russia). Col. imp., round.*

Zalot kop 3, blue (for the city of Warsaw), zalot kop 10, black.

## Sandwich Islands.

## ADHESIVE STAMPS.

1861.—*Name (Hawaiian postage), figure indicating value. Col. imp., rect.*

2 cents blue, 2 cents black.

*Name, (Honolulu postage, Hawaiian Island), half figure of King in military costume. Col. imp. rect.*

5 cents black, 5 cents blue, 13.c. red (Haw. 50, U.S., 8cs.).

*Bust of King, inscriptions "uku Leta," "ekua Keneta." Col. imp., rect.*

2 cents rose.

## Sardinia.

(See Italy.)

## Saxony.

## ADHESIVE STAMPS.

*Name, figure indicating value. Col. imp., square.*  
3 pfennige red.

*Name, head of King Frederic Augustus to right. Black imp., rect.*

$\frac{1}{2}$  Neu grosch. grey, 1 N. gr. rose, 2 N. gr. blue-green, 2 N. gr. dark blue, 3 N. gr. white, 3 N. gr. yellow.

1854-62.—*Name, arms (shield under crown) in oval.*  
*Col. imp., rect.*

3 pfennige green.

*Name, head of King John to left. Black imp., rect.*

$\frac{1}{2}$  New grosch. grey, 1 N. gr. rose, 2 N. gr. blue, 3 N. gr. yellow.

*Similar stamps. Col. imp.*

5 Neu grosch. vermilion, 10 N. gros. light blue.

## ENVELOPE STAMPS.

*Name, head of King John to left, in white relief. Col. imp., oval.*

1 Neu groschen rose, 2 N. gr. blue, 3 N. gr. yellow, 5 N. gr. lilac, 10 N. gr. green.

## Schleswig-Holstein.

(See Denmark.)

## Sicily.

(See Two Sicilies).

## Sierra Leone.

### ADHESIVE STAMPS.

*Name, head of Queen Victoria to left, in octagon. Col. imp., rect.*

6d. lilac.

## South Australia.

### ADHESIVE STAMPS.

*Name, head of Queen Victoria, to left in circle. Col. imp., rect.*

1d. dark green, 1d. light green, 2d. carmine, 2d. light red, 6d. deep blue, 6d. pale blue, 1s. orange, 1s. yellow.

*Name, head of Queen Victoria to left, in oval. Col. imp., rect.*

9d. iron-grey.

Arm  
wr  
B  
1 cu

1850

6 c  
ri. gr

185

6  
blue

185

6

18

1

g

## Spain.

## ADHESIVE STAMPS.

*Arms (bear climbing a tree), in oval, under crown, wreathed in octagon words "correo interior." Bronze imp., rect.*

1 cuarto, 2 c., 3 c.

1850.—*Head of Queen crowned to left, date indicated. Col. imp., rect.*

6 cuarto black, 12 c. violet (head to right), 5 reales red, 6 rl. blue, 10 rl. green.

1851.—*Head of Queen to right, in oval. Col. imp. rect., date indicated.*

6 cuartos black, 12 c. violet, 2 reales red, 5 rl. rose, 6 rl. blue, 10 rl. blue.

1852.—*Head of Queen to left, in circle. Col. imp., rect., date indicated.*

6 cuartos rose, 12 c. violet, 2 reales red, 5 rl. green, 6 rl. light blue.

1853.—*Head of Queen to right, in oval, date indicated. Col. imp., rect.*

6 cuartos red, 12 c. violet, 2 reales rose, 5 rl. green, 6 rl. blue.

1854.—*Royal arms (lion and castle quartered on shield under crown), date indicated. Col. imp., rect.*

2 cuartos green, 4 c. pink, 6 c. lake, 1 real black, 2 rl. scarlet, 5 rl. green, 6 rl. blue.

1855.—*Head of Queen to right, in circle. Col. imp., on bluish paper, rect.*

2 cuartos green, 4 c. lilac, 1 real blue, 2 rl. chocolate.

1856.—*Similar stamp. Col. imp. on white paper.*

2 cuartos green, 4 c. rose, 1 real blue, 2 rl. chocolate.

1860-62.—*Head of Queen to left, in circle. Col. imp.,  
rect.*

2 cuartos green, 4 c. orange, 12 c. carmine, 19 c. brown-red, 1 real blue,  
2 rl. lilac.

#### OFFICIAL STAMPS.

(CORREO OFICIAL.)

1854.—*Royal arms (lion and castle quartered on  
shield, under crown) date indicated. Black  
imp., on coloured paper, rect.*

$\frac{1}{4}$  onza orange, 1 onza rose, 4 onza green, 1 libra blue.

1854.—*Royal arms as above, date not indicated. Black  
imp. on coloured paper, oval.*

$\frac{1}{4}$  onza orange, 1 onza rose, 4 onza green, 1 libra blue.

#### POSSESSIONS.

*Cuba and Porto Rico.*

#### ADHESIVE STAMPS.

1855.—*Head of Queen to right, in circle. Col. imp.  
on bluish paper, rect.*

$\frac{1}{4}$  rl. plata blue-green, 1 rl. pl. bright green, 2 rl. pl. red.

1857.—*Similar stamps on white paper.*

$\frac{1}{4}$  rl. plata blue, 1 rl. pl. green, 2 rl. pl. rose.

## ISLAND OF LUZON (PHILIPPINES).

## ADHESIVE STAMPS.

1854.—*Head of Queen. Col. imp., rect.*

Correo interior, without indication of value.  
6 cuartos, 1 real.

*Head of Queen to right, in circle. Col. imp., rect.*

Correo interior, 5 cuartos red.

## States of the Church.

(*See Papal States.*)

## St. Helena.

## ADHESIVE STAMP.

1859.—*Name, head of Queen Victoria to left, in circle.*

*Col. imp., rect.*

6d. blue.

## St. Lucia.

## ADHESIVE STAMPS.

1859.—*Name, head of Queen Victoria to left, in oval.*

*Col. imp., rect., no value indicated.*

Red (value 1d.) blue (value 4d.) green (value 6d.).

## St. Thomas.

(*See Denmark.*)

## St. Vincent's.

### ADHESIVE STAMPS.

1859.—*Name, head of Queen Victoria. Col. imp., rect.*

1d. lake, 6d. green.

## Sweden.

### ADHESIVE STAMPS.

1855.—*Name, arms (shield and crown). Col. imp., rect.*

3 skill. bco. green, 4 s. bco. blue, 6 s. bco. fawn, 8 s. bco. yellow, 24 s. bco. red, 24 s. bco. light cinnamon.

1858.—*Similar stamp to last.*

5 ore green, 9 ore lilac, 12 ore blue, 24 ore yellow, 30 ore red-brown, 50 ore lake.

**LOCAL STAMP** (for the City of Stockholm, only).

*"Freemarke for Lokalbref," in circle. Oblong.*

Black, Light Brown.

## Switzerland.

### CANTONAL ADMINISTRATION.

#### ADHESIVE STAMPS.

#### BASLE.

*Name, Dove in white relief, on red shield. Black imp. on green and white paper.*

2½ Rap.

#### BERNE.

*Name (Kanton Berne). Arms (Bear in shield under crown). Col. imp., rect.*

10 rappen stone.

Name

"p  
pap

5 cen  
post loc

5 cen

Whi

5 cen

Whi

4 cen

184

4 c

185

4

4

4

2

2

2

## GENEVA.

*mp.*, Name, arms (shield bearing half eagle and key, motto, "post tenebra Lux," &c.). Black *imp.* on coloured paper, rect. *3 cent light green*  
 5 cent yellow, 5 cent dark green, (port cantonal). 3 cent yellow, post local (smaller rect.). *5 cent yellow green 5 c blue green*

*mp.*, Similar stamp. Col. *imp.* on white paper.

5 cent, green, port cantonal. *5*

## NEUCHÂTEL.

*s. bco.* White cross on red ground, in shield. Black *imp.*, rect.

5 centimes, poste locale.

## VAUD.

*rown.* White cross on red ground, in shield, with post-horn.

Oblong.

4 cent black, 5 cent black.

## ZÜRICH.

1843.—Figure indicating value, date indicated. Black *imp.*, rect.

4 cent Local Taxe. 6 cent Cantonal Taxe.

*mp.* 1850.—Name (Zurich), figure indicating value. Black *imp.*, rect.

4 cent Locale Taxe. 6 cent Cantonal Taxe.

*4 cent " " 6 cent " " 6 cent (larger figures) horizontal lines*

## GERMAN AND FRENCH CANTONS.

*er* Arms (white cross on red ground). Black *imp.*, rect.

*2½ Rap. Orts post. 2½ Rap Orts post (smaller cross with black shading)*

*2½ Rap. Poste Locale.*

*2½ Rap. Orts post, Post Locale (with posthorn and oblong shape).*



## FEDERAL ADMINISTRATION.

*Arms (white cross in coloured shield). Black imp. on coloured paper, rect.*

5 Rap. dark blue, 10 Rap. orange, 10 Rap. yellow.

*Similar stamp. Col. imp. on white paper.*

5 Rap. blue, 15 Rap. rose, 15 cents rose.

1854-62.—*Goddess of Liberty sitting with shield bearing white cross. Col. imp., rect.*

5 Rappen brown, 10 Rap. blue, 15 Rap. rose, 20 Rap. yellow, 40 Rap. green, 1 franc grey.

*5 Rap. amber 10 rap. yellow 3 fr. 1d.*

## Tasmania.

## ADHESIVE STAMPS.

*Name (Van Dieman's Land), head of Queen Victoria to right. Col. imp., rect.*

1d. pale blue.

*Similar stamp. Octagon.*

4d. orange, 4d. brown.

*Similar to last, having head of Queen Victoria to left.*

10d. red.

1860.—*Name (Van Dieman's Land) head of Queen Victoria, crowned. Col. imp., rect.*

1d. red, 2d. emerald-green, 2d. dark green, 4d. blue.

*Name ("Tasmania") head of Queen Victoria in oct. Col. imp., oct.*

6d. violet, 1s. red.

## Thurn and Taris.

(See Germany.)

## Trinidad.

### ADHESIVE STAMPS.

Name, value not indicated. *Britannia sitting.*  
*Blotched wood-block imp. on bluish paper, rect.*

Red, blue, grey.

*Similar stamp, (badly executed (Native?) die.)*

Blue. *purple*

*Similar stamp. Col. imp. on white paper, rect.*

Red, crimson, blue, black.

*Similar stamp, value indicated.*

4d. violet, 6d. green, 1s. blue-black.

## Tuscany.

### ADHESIVE STAMPS.

Name, arms (*crowned lion sitting, with shield*), Col.  
*imp., on bluish paper. Rect.*

1 quattr black, 1 soldo yellow, 2 soldi red, 1 crazia marone, 2 crazie blue,  
 4 cra. dark green, 6 cra. dark blue, 9 cra. brown, 60 cra. red-brown.

*Similar stamps. Col. imp. on white paper.*

1 quattr black, 1 soldo yellow, 1 crazia marone, 2 crazie blue, 4 cr.  
green, 6 cra. dark blue, 9 cra. brown. *60 cra. red brown*

imp.

bear-

Rep.

oria

est.

en

1859.—*Name, arms (Savoy cross on shield, &c.).*  
*Col. imp., rect.*

1 centes violet, 5 c. green, 10 c. brown, 20 c. blue, 40 c. red, 80 c. pink,  
 3 lire chrome.

## Two Sicilies.

### ADHESIVE STAMPS.

#### NAPLES.

1857.—*Name, arms (Horse, three legs conjoined, and*  
*three fleur-de-lis), differently surrounded in each stamp.*  
*Lake imp., on white paper. Rect.*

$\frac{1}{4}$  grano, 1 gr., 2 gr., 5 gr., 10 gr., 20 gr., 50 gr.

### PROVISIONAL GOVERNMENT.

Oct., 1860.—*Similar stamp, square.*

$\frac{1}{4}$  tornese blue.

Nov., 1860.—*Name, arms (Savoy cross), square.*

$\frac{1}{4}$  tornese blue.

#### SICILY.

1859.—*Name, head of Ferdinand II., to left. Col.*  
*imp., rect.*

$\frac{1}{4}$  gr. orange, 1 gr. olive-brown, 2 gr. blue, 5 gr. red, 5 gr. carmine, 10  
 gr. deep blue, 20 gr. blue-black, 50 gr. red-brown.

## United States.

### ADHESIVE STAMPS.

*Name (U. S. Post-office). Col. imp., rect.*

5 cents brown (head of Franklin).  
10 cents black (head of Washington).

*Name (U. S. P. O. dispatch) eagle in oval. Col. imp., oblong.*

1 cent prepaid, blue.

1857.—*Name (U. S. Postage) at top, and each stamp different head and design. Col. imp., rect.*

1 cent blue, 3 c. carmine, 5 c. brown, 10 c. green, 12 c. black, 24 c. lilac, 30 c. orange, 90 c. blue.

1861.—*Name, U. S. postage at top, and U. S. at the bottom of each stamp, different heads and designs. Col. imp., rect.*

1 cent blue, 3 c. pale carmine, 5 c. light brown, 10 c. green, 12 c. black, 24 c. lilac, 30 c. orange, 90 c. blue.

### ENVELOPE STAMPS.

*Head in relief to left. Col. imp., on white paper, large oval.*

3 cents red, 6 cents red, 6 cents green, 10 cents green.

*Similar stamp. Col. imp., on yellow paper.*

3 cents red, 6 cents red, 6 cents green, 10 cents green.

1860.—*Head in relief to left, in oval bordering, containing value and U. S. postage in relief. Col. imp., on white paper, small oval.*

3 cents vermilion, 10 cents green.

1862 5 cents brown 10 cents green

25 "

50 "

figure in circle indicating value

8c.).

pink,

and  
mp.

*Similar stamp. Col. imp. on yellow paper, small oval.*

3 cents vermilion, 10 cents green.

1861.—*Similar stamp, head in relief, to right. Col. imp., on yellow paper, small oval.*

1 cent blue.

*Head in relief to left, in oval bordering, bearing "United States," and value in circle on each side. Col. imp., on white paper, oval.*

3 cents rose, 4 cents (composed of the 3 c. and 1 c. stamps on same envelope), 6 cents rose.

*Same stamp on yellow paper.*

3 cents rose, 4 cents (composed of the 3 c. and 1 c. stamps on same envelope), 6 cents rose.

*Head in relief, to left, in oval, value in words, over head, and name (U. S. Postage) at bottom. Value in figures each side in circle. Elliptical.*

10 cents green, on white paper. 10 cents green, on yellow paper.

*Similar stamp. Impression in two colours on white paper. Elliptical.*

12 cents brown and red, 20 cents blue and red, 24 cents green and red, 40 cents red and black.

*Similar stamp. Impression in two colours on yellow paper.*

12 cents brown and red, 20 cents blue and red, 24 cents green and red, 40 cents red and black.

## LOCAL STAMPS.

*American express company postage*, 2 c. paid.

BALTIMORE. *Griffin's dispatch*, oblong, 1 cent red on white.

„ *Adam's express company*, green on yellow paper.

„ *Stringer and Morton's city dispatch*, oblong, black on brown.

„ *Government city dispatch (courier)*, oblong, 1 cent pink, 1 cent black.

BOSTON. *Chewert towle*, 7, *State St.*, *city letter delivery*, round, 2 cents blue.

*Boyce's city express*, oval. 2 cents black on green paper.

*Boyd's city express post*. Eagle on globe, oval. Blk. imp. on coloured paper. 1 cent lilac, 1 c. blue, 1 c. green, 2 c. gold, 2 c. red, 2 c. white, 2 c. light green, 2 c. dark green, 3 c. green.

*Brady and Co.* 1 cent.

*Broadway post-office*, oblong, black imp.

*Brown and Co.*, *city post*, figure in oval. Rect., 1 cent, 2 cents.

*Brooklyn city express post*, dove carrying letter in oval. Blk. imp. on col. paper. Rect. 2 cents rose, 2 cent crimson.

*City express post*. Black imp., rect.

*Carrier's dispatch.* Oblong, 1 cent rose.

*City dispatch post.* 2 cents green.

*Essex letter express.* 2 cents.

*Floyd's penny post (head to left).* Black, blue.

*Hussey's bank and insurance city post.* Rect.

*Hussey's city post.*

*Hussey's bank and insurance notice delivery office.* 1 cent.

*Hussey's one stamp or cent each.*

*Hanley's express post letter stamp.* 1 cent green, 1 c. black.

*Messenkope, Union Square post-office.*

*McIntyre's city express post (Mercury).* 2 c. carmine.

NEW YORK. *Post-office, head in oval.* Col. imp.,  
rect., 5 cents black.

„ *Metropolitan, Ferrand and Carrier.*  
Large shield, 1 cent, 5 c., 10 c., 20  
c. red, 1 c., 5 c., 10 c., 20 c. blue.

„ *Similar stamp in relief.* 2 c. red.

„ *P. O. express to the mail,* small shield.  
1 cent red.

NEW JERSEY. *Express Co. Head of horse, in relief,*  
*oval.* Green on yellow.

- PHILADELPHIA. *Small oblong, Blood's penny post.*  
 ,, *Oval* ,, ,, *black imp.*  
 ,, *Rect.* ,, ,, ,,
- Post-office dispatch*, small oblong, 1 cent blue.
- Price's city express post.* 2 cents black on red paper.
- Russell post-office*, head to right. Black on green paper. Oct.
- Smith's city express post.* 2 c. paid.
- Squier & Co., city letter dispatch*, (dove rect). 1 c. rose, 1 c. green.
- Steinmeyer's city, post-paid.* 2 cents black on rose, small oblong. 2 c. black on yellow, small oblong.
- Swart's city dispatch* (bust of Chatham), rect., vermilion.
- Swart's for U.S. mail.* Blue imp., square. 1 cent, prepaid.
- Swart's rough and ready dispatch*, rect., red.
- Warwick's city dispatch*, small. 2 c. carmine, 2 c. yellow: large, 2 c. yellow.
- Washington city dispatch (Courier).* Rect, 1 c. lilac.
- Wells, Fargo & Co., Pony express* (man on horse), rect. 1 dollar red, 2 dol. pink, 2 dol. green, 4 dol. green.
- Wells, Fargo & Co., Pony express* (name in Garter),  $\frac{1}{2}$  oz. 1 dollar, blue:



## Uruguay.

(See *Monte Video.*)

## Vancouver's Island.

(See *British Columbia.*)

## Van Dieman's Land.

(See *Tasmania.*)

## Venezuela.

ADHESIVE STAMPS.

1859.—*Name, arms and motto "Libertad."* Col. imp., small rect.

$\frac{1}{2}$  real yellow,  $\frac{1}{2}$  rl. orange, 1 rl. blue. 2 real red, 2 rl. crimson.

## Venetia.

(See *Austrian Italy.*)

## Victoria.

ADHESIVE STAMPS.

*Name, portrait of Queen Victoria.* Col. imp., rect.

1d. rose, 2d. cinnamon, 3d. blue.

*Queen on throne.* Col. imp., rect.

2d. brown.

*Name, Queen on throne. Col. imp., rect.*

1d. green, 6d. blue.

*Name, head of Queen Victoria to left, in oval border containing value. Rect. Devices in each corner of stamp.*

1d. green, 2d. lilac, 4d. pink, 4d. dark red.

*Similar stamp, without devices in corners.*

1d. green.

*Name, head of Queen Victoria to left, words "Postage Stamp" each side. Col. imp., rect.*

6d. yellow, 6d. black, 2s. green.

*Name, head of Queen Victoria to left, in oval. Figures indicating value in small oval, each side. Col. imp., rect.*

3d. blue, 4d. rose, 6d. yellow, 6d. black.

*Name, head of Queen Victoria to left, in circle. Col. imp. Oct.*

1s. blue.

*Name, head of Queen Victoria to left. Col. imp. rect.,*

100 LATE, 6d. lilac and green.  
REGISTERED, 1s. blue and rose.

## Western Australia.

### ADHESIVE STAMPS.

*Name, arms (Swan). Col. imp.*

1d. black (oblong), 2d. chocolate, on red (oct.), 4d. blue (oct.), 6d. bronze (oct.), 1s. marone (ellipse).

1861-62.—*Similar stamp, square.*

1d. pink, 2d. orange, 2d. blue, 4d. rose, 6d. violet-carmine, 6d. green,  
6d. black, 1s. green.

## Württemberg.

### ADHESIVE STAMPS.

1850.—*Name, figure indicating value, in diamond.*  
*Black imp., square.*

1 kreuzer white, 3 kr. yellow, 6 kr. green, 9 kr. rose, 18 kr. neutral.

1860.—*Arms (shield, &c., supported by lion and stag). Col. imp., square.*

1 kreuzer brown, 3 kr. orange, 6 kr. green, 9 kr. rose, 18 kr. blue.

*Arms (shield and crown), wreathed, in oval. Black imp., square.*

Commission fur retourbriefe, (used for returned letters).

### ESSAYS

1860.—*Similar stamp to issue of 1850.*

3 kr uzer blue, 3 kr. blue.

Aus  
Belg  
Bra  
Bre  
Old  
Bru  
Har  
Den  
Gre  
  
Gre  
Han  
Lut  
Ger  
  
Hol  
  
Ind  
  
Ital  
Lon  
at  
  
Med  
  
No  
No  
Na  
Por  
Pr  
Pa  
Ru  
Sw  
Sa  
  
Sw  
  
Sp  
So  
T

# MONEY TABLE.

				s.	d.
Austria, &c.	100 kreuzer	equal	1 florin	equal	2 0
Belgium, France	100 centimes	"	1 franc	"	9½
Brazil	1000 reis	"	1 milreis	"	3 6
Bremen	5 schwaren	"	1 grote	"	"
Oldenburg }	72 grotes	"	1 rix dollar	"	3 3½
Brunswick }	12 pfennigen	"	1 groschen	"	"
Hanover }	24 gute groschen	"	1 thaler	"	2 11
Denmark	96 skilling	"	1 rigsbank daler	"	2 3
Great Britain	4 farthings	"	1 penny	"	"
"	12 pence	"	1 shilling	"	1 0
Greece "	100 lepta	"	1 drachmi	"	8½
Hamburg }	12 pfennings	"	1 schilling	"	"
Lubeck }	16 schilling	"	1 mark	"	1 5½
German States	4 pfennige	"	1 kreuzer	"	"
"	60 kreuzer	"	1 florin	"	1 8
Holland "	5 cents	"	1 stiver	"	"
"	20 stivers	"	1 florin	"	1 8
India "	12 pie	"	1 anna	"	"
"	16 annas	"	1 rupee	"	2 0
Italy, &c.	100 centesimi	"	1 lira	"	9½
Lombardo-Venetia	100 centesimi	"	"	"	"
and Tuscany	20 soldi	"	"	"	8
"	12 crazie	"	"	"	"
Mecklenburg	12 pfennige	"	1 schilling	"	"
"	24 schilling	"	1 neue thaler	"	2 3
Norway	120 skilling	"	1 specie daler	"	4 5
North America	100 cents	"	1 dollar	"	4 2
Naples	100 grani	"	1 ducat	"	3 4
Portugal	1000 reis	"	1 milreis	"	4 8
Prussia, &c.	30 silb. groschen	"	1 dollar or thaler	"	2 11
Papal States	100 Bajocchi	"	1 scudo	"	4 2½
Russia	100 copecs	"	1 silver rouble	"	3 1½
Switzerland	100 rappen or centimes	"	1 franc	"	9½
Saxony	10 pfennige	"	1 neu groschen	"	"
"	30 neu groschen	"	1 thaler	"	3 0
Sweden	48 skilling banco	"	1 daler	"	1 8
"	100 ore	"	1 riksdollar	"	1 1
Spain, &c.	16 cuartos	"	1 real	"	2½
South America	centavos	"	1 peso	"	4 0
Turkey	40 paras	"	1 piastre	"	2½

LONDON:  
PRINTED BY F. PASSMORE, 124, CHEAPSIDE.

1001  
2 2 2  
2 2 2

*George W. Brown*

If a fellow said to  
me  $\pi \approx 3.1415926$

I would conclude he  
was drunk

