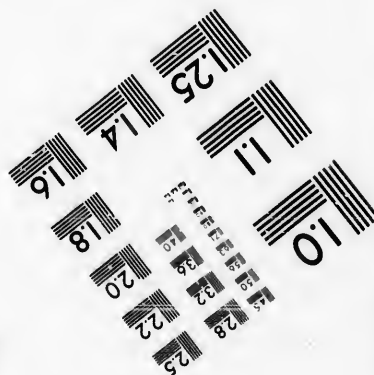
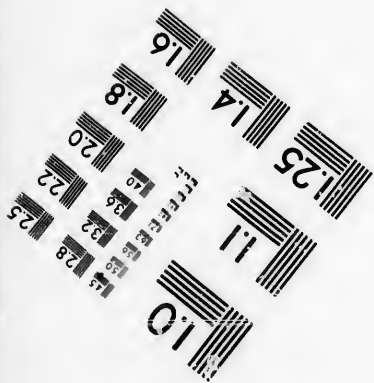
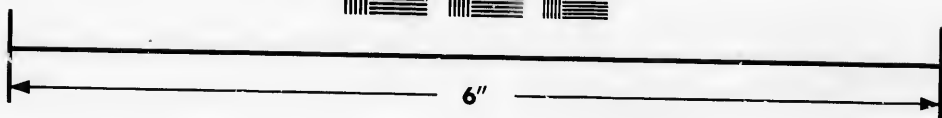
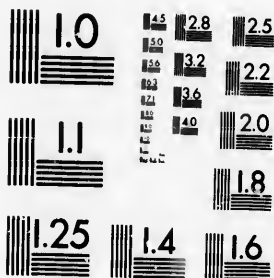


**IMAGE EVALUATION
TEST TARGET (MT-3)**



**Photographic
Sciences
Corporation**

23 WEST MAIN STREET
WEBSTER, N.Y. 14580
(716) 872-4503

**CIHM/ICMH
Microfiche
Series.**

**CIHM/ICMH
Collection de
microfiches.**



Canadian Institute for Historical Microreproductions / Institut canadien de microreproductions historiques

© 1986

Technical and Bibliographic Notes/Notes techniques et bibliographiques

The Institute has attempted to obtain the best original copy available for filming. Features of this copy which may be bibliographically unique, which may alter any of the images in the reproduction, or which may significantly change the usual method of filming, are checked below.

L'Institut a microfilmé le meilleur exemplaire qu'il lui a été possible de se procurer. Les détails de cet exemplaire qui sont peut-être uniques du point de vue bibliographique, qui peuvent modifier une image reproduite, ou qui peuvent exiger une modification dans la méthode normale de filmage sont indiqués ci-dessous.

- | | |
|--|--|
| <input type="checkbox"/> Coloured covers/
Couverture de couleur | <input type="checkbox"/> Coloured pages/
Pages de couleur |
| <input type="checkbox"/> Covers damaged/
Couverture endommagée | <input type="checkbox"/> Pages damaged/
Pages endommagées |
| <input type="checkbox"/> Covers restored and/or laminated/
Couverture restaurée et/ou pelliculée | <input type="checkbox"/> Pages restored and/or laminated/
Pages restaurées et/ou pelliculées |
| <input type="checkbox"/> Cover title missing/
Le titre de couverture manque | <input checked="" type="checkbox"/> Pages discoloured, stained or foxed/
Pages décolorées, tachetées ou piquées |
| <input type="checkbox"/> Coloured maps/
Cartes géographiques en couleur | <input type="checkbox"/> Pages detached/
Pages détachées |
| <input checked="" type="checkbox"/> Coloured ink (i.e. other than blue or black)/
Encre de couleur (i.e. autre que bleue ou noire) | <input checked="" type="checkbox"/> Showthrough/
Transparence |
| <input type="checkbox"/> Coloured plates and/or illustrations/
Planches et/ou illustrations en couleur | <input type="checkbox"/> Quality of print varies/
Qualité inégale de l'impression |
| <input type="checkbox"/> Bound with other material/
Relié avec d'autres documents | <input type="checkbox"/> Includes supplementary material/
Comprend du matériel supplémentaire |
| <input type="checkbox"/> Tight binding may cause shadows or distortion
along interior margin/
La reliure serrée peut causer de l'ombre ou de la
distorsion le long de la marge intérieure | <input type="checkbox"/> Only edition available/
Seule édition disponible |
| <input type="checkbox"/> Blank leaves added during restoration may
appear within the text. Whenever possible, these
have been omitted from filming/
Il se peut que certaines pages blanches ajoutées
lors d'une restauration apparaissent dans le texte,
mais, lorsque cela était possible, ces pages n'ont
pas été filmées. | <input type="checkbox"/> Pages wholly or partially obscured by errata
slips, tissues, etc., have been refilmed to
ensure the best possible image/
Les pages totalement ou partiellement
obscurcies par un feuillet d'errata, une pelure,
etc., ont été filmées à nouveau de façon à
obtenir la meilleure image possible. |
| <input checked="" type="checkbox"/> Additional comments:/ [Printed ephemera] [3] p.
Commentaires supplémentaires: | |

This item is filmed at the reduction ratio checked below/
Ce document est filmé au taux de réduction indiqué ci-dessous.

10X	12X	14X	16X	18X	20X	22X	24X	26X	28X	30X	32X
						↓					

The copy filmed here has been reproduced thanks to the generosity of:

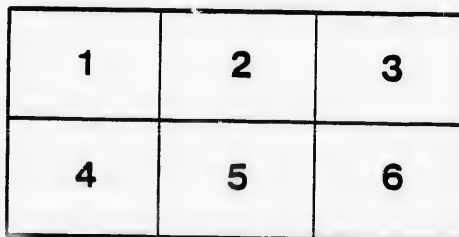
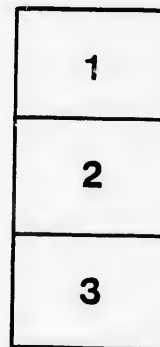
Department of Rare Books
and Special Collections,
McGill University, Montreal.

The images appearing here are the best quality possible considering the condition and legibility of the original copy and in keeping with the filming contract specifications.

Original copies in printed paper covers are filmed beginning with the front cover and ending on the last page with a printed or illustrated impression, or the back cover when appropriate. All other original copies are filmed beginning on the first page with a printed or illustrated impression, and ending on the last page with a printed or illustrated impression.

The last recorded frame on each microfiche shall contain the symbol \rightarrow (meaning "CONTINUED"), or the symbol ∇ (meaning "END"), whichever applies.

Maps, plates, charts, etc., may be filmed at different reduction ratios. Those too large to be entirely included in one exposure are filmed beginning in the upper left hand corner, left to right and top to bottom, as many frames as required. The following diagrams illustrate the method:



L'exemplaire filmé fut reproduit grâce à la générosité de:

Department of Rare Books
and Special Collections,
McGill University, Montreal.

Les images suivantes ont été reproduites avec la plus grande soin, compte tenu de la condition et de la netteté de l'exemplaire filmé, et en conformité avec les conditions du contrat de filmage.

Les exemplaires originaux dont la couverture en papier est imprimée sont filmés en commençant par le premier plat et en terminant soit par la dernière page qui comporte une empreinte d'impression ou d'illustration, soit par le second plat, selon le cas. Tous les autres exemplaires originaux sont filmés en commençant par la première page qui comporte une empreinte d'impression ou d'illustration et en terminant par la dernière page qui comporte une telle empreinte.

Un des symboles suivants apparaîtra sur la dernière image de chaque microfiche, selon le cas: le symbole \rightarrow signifie "A SUIVRE", le symbole ∇ signifie "FIN".

Les cartes, planches, tableaux, etc., peuvent être filmés à des taux de réduction différents. Lorsque le document est trop grand pour être reproduit en un seul cliché, il est filmé à partir de l'angle supérieur gauche, de gauche à droite, et de haut en bas, en prenant le nombre d'images nécessaire. Les diagrammes suivants illustrent la méthode.

re
étails
es du
modifier
r une
image

s

rrata
o

elure.
n à

32X



Coligny • College,

OTTAWA.



for the Education of Young Ladies, french and English.



COLIGNY COLLEGE, OTTAWA.

✻ For the Education of Young Ladies, French and English. ✻

This institution is owned and managed by the Board of French Evangelization of the Presbyterian Church in Canada. The buildings, which were erected by the "Ottawa Ladies' College," occupy a most eligible site, in the Capital of the Dominion of Canada, and are admirably adapted for educational purposes. They are spacious, well furnished, lighted with gas, heated by steam and hot water, and provided with all modern conveniences for health and comfort.

AIM.

The aim is to give young women a thorough Christian education in French and English, at a moderate cost. Every opportunity will be furnished to English pupils, both by daily conversation and instruction in classes, to acquire a full knowledge of French, which will be chiefly, while not exclusively, the language used by the residents of the institution. It is hoped that thus all pretexts for Protestant parents sending their daughters to convents will be removed.

STAFF OF INSTRUCTORS.

The Board have been fortunate in securing, for the position of Principal, the services of Mrs. Crawford, from England, a lady of distinguished attainments and of wide experience in the education of young ladies both in Britain and on the Continent of Europe, speaking and writing with equal facility French and German, as well as English. She will be assisted by a competent staff of resident and non-resident teachers, able to converse in French and qualified to conduct the several branches of a first-class English education, and to give instruction in vocal and instrumental music and the fine arts.

COURSE OF STUDY.

This will embrace the following departments:—1. A Kindergarten, thoroughly equipped and under a duly qualified teacher. 2. Preparatory. 3. Junior. 4. Senior. Students will be admitted to the department for which, upon examination, they may be found qualified. Details as to subjects of study, text books, etc., will be furnished at the opening.

SESSION.

The College will open on Thursday, October 3rd, 1889, at ten o'clock, a.m. The Session will consist of three terms of eleven weeks each:—

First Term, from October 3rd to December 20th.

Second Term, from January 13th to March 31st.

Third Term, from April 1st to June 17th.

COST.

BOARDERS.

The cost per term, for Students residing in the College, for board with furnished room fuel and light, and tuition (except music and the fine arts.) will be as follows:—

PREPARATORY	\$45.00
JUNIOR	47 50
SENIOR	50.00

DAY PUPILS.

Tuition for day pupils will be as follows per term:—

KINDERGARTEN	\$ 5.00
PREPARATORY (including French)	6.00
JUNIOR (including French and German)	10.00
SENIOR " " "	12.00

MUSIC AND THE FINE ARTS.

To render this department thoroughly efficient, the services have been secured of an accomplished lady from abroad, with the highest certificates from the Royal Academy of Music, London; Trinity College, London; and the International College of Music. She will reside in the College and take the general oversight of these studies.

FEES PER TERM.

PIANO, Junior	\$10.00
" Senior (Master)	18.00
ORGAN	18.00
VIOLIN	18.00
VOCAL MUSIC	10.00
CHORAL CLASS	1.00
HARMONY AND COMPOSITION	5.00
USE OF PIANO for Practice, 1 hour daily	2.50
DRAWING, Free Hand	1.00
" Crayon	8.00
PAINTING, Oils or Water Colours	10.00

Board and Tuition Fees payable each term in advance.

REQUIREMENTS.

Each boarder is required to provide a pair of blankets, a quilt, two pairs of sheets, two pillow-cases, six towels, and six table-napkins with ring. If preferred, however, the articles will be supplied at an additional charge of two dollars per term. All linen and articles of clothing must be distinctly marked with the owner's name.

Applications should be addressed to the

REV. DR. WARDEN,

198 St. James Street, MONTREAL.

MONTREAL, 10th September, 1889.

