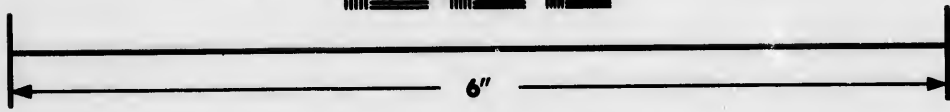
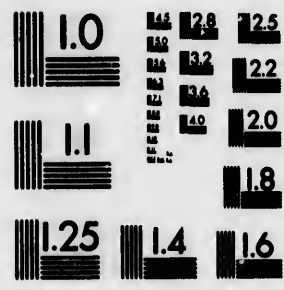


**IMAGE EVALUATION  
TEST TARGET (MT-3)**



**Photographic  
Sciences  
Corporation**

23 WEST MAIN STREET  
WEBSTER, N.Y. 14580  
(716) 872-4503

E 124  
E 125  
E 122  
E 120  
118

**CIHM/ICMH  
Microfiche  
Series.**

**CIHM/ICMH  
Collection de  
microfiches.**



Canadian Institute for Historical Microreproductions / Institut canadien de microreproductions historiques

10  
11  
12

**© 1984**

Technical and Bibliographic Notes/Notes techniques et bibliographiques

The Institute has attempted to obtain the best original copy available for filming. Features of this copy which may be bibliographically unique, which may alter any of the images in the reproduction, or which may significantly change the usual method of filming, are checked below.

L'institut a microfilmé le meilleur exemplaire qu'il lui a été possible de se procurer. Les détails de cet exemplaire qui sont peut-être uniques du point de vue bibliographique, qui peuvent modifier une image reproduite, ou qui peuvent exiger une modification dans la méthode normale de filmage sont indiqués ci-dessous.

- Coloured covers/  
Couverture de couleur
- Covers damaged/  
Couverture endommagée
- Covers restored and/or laminated/  
Couverture restaurée et/ou pelliculée
- Cover title missing/  
Le titre de couverture manque
- Coloured maps/  
Cartes géographiques en couleur
- Coloured ink (i.e. other than blue or black)/  
Encre de couleur (i.e. autre que bleue ou noire)
- Coloured plates and/or illustrations/  
Planches et/ou illustrations en couleur
- Bound with other material/  
Relié avec d'autres documents
- Tight binding may cause shadows or distortion along interior margin/  
La reliure serrée peut causer de l'ombre ou de la distorsion le long de la marge intérieure
- Blank leaves added during restoration may appear within the text. Whenever possible, these have been omitted from filming/  
Il se peut que certaines pages blanches ajoutées lors d'une restauration apparaissent dans le texte, mais, lorsque cela était possible, ces pages n'ont pas été filmées.
- Additional comments:/  
Commentaires supplémentaires:

- Coloured pages/  
Pages de couleur
- Pages damaged/  
Pages endommagées
- Pages restored and/or laminated/  
Pages restaurées et/ou pelliculées
- Pages discoloured, stained or foxed/  
Pages décolorées, tachetées ou piquées
- Pages detached/  
Pages détachées
- Showthrough/  
Transparence
- Quality of print varies/  
Qualité inégale de l'impression
- Includes supplementary material/  
Comprend du matériel supplémentaire
- Only edition available/  
Seule édition disponible
- Pages wholly or partially obscured by errata slips, tissues, etc., have been refilmed to ensure the best possible image/  
Les pages totalement ou partiellement obscurcies par un feuillet d'errata, une pelure, etc., ont été filmées à nouveau de façon à obtenir la meilleure image possible.

This item is filmed at the reduction ratio checked below/  
Ce document est filmé au taux de réduction indiqué ci-dessous.

10X	14X	18X	22X	26X	30X
<input type="checkbox"/>	<input type="checkbox"/>	<input type="checkbox"/>	<input type="checkbox"/>	<input checked="" type="checkbox"/>	<input type="checkbox"/>
12X	16X	20X	24X	28X	32X

The  
to th

The  
pos  
of th  
filmi

Orig  
begi  
the l  
sion,  
othe  
first  
sion,  
or ill

The  
shall  
TINU  
whic

Map  
differ  
entire  
begin  
right  
requ  
meth

The copy filmed here has been reproduced thanks to the generosity of:

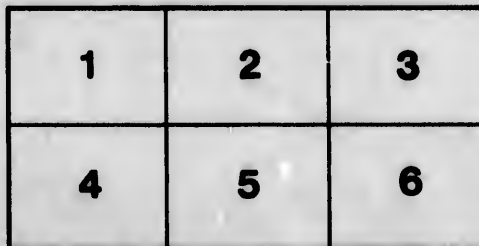
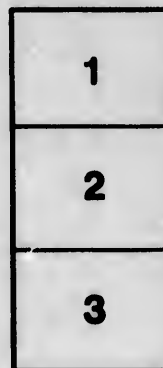
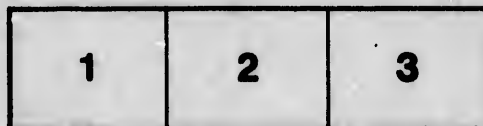
Library of the Public  
Archives of Canada

The images appearing here are the best quality possible considering the condition and legibility of the original copy and in keeping with the filming contract specifications.

Original copies in printed paper covers are filmed beginning with the front cover and ending on the last page with a printed or illustrated impression, or the back cover when appropriate. All other original copies are filmed beginning on the first page with a printed or illustrated impression, and ending on the last page with a printed or illustrated impression.

The last recorded frame on each microfiche shall contain the symbol  $\rightarrow$  (meaning "CONTINUED"), or the symbol  $\nabla$  (meaning "END"), whichever applies.

Maps, plates, charts, etc., may be filmed at different reduction ratios. Those too large to be entirely included in one exposure are filmed beginning in the upper left hand corner, left to right and top to bottom, as many frames as required. The following diagrams illustrate the method:



L'exemplaire filmé fut reproduit grâce à la générosité de:

La bibliothèque des Archives  
publiques du Canada

Les images suivantes ont été reproduites avec le plus grand soin, compte tenu de la condition et de la netteté de l'exemplaire filmé, et en conformité avec les conditions du contrat de filmage.

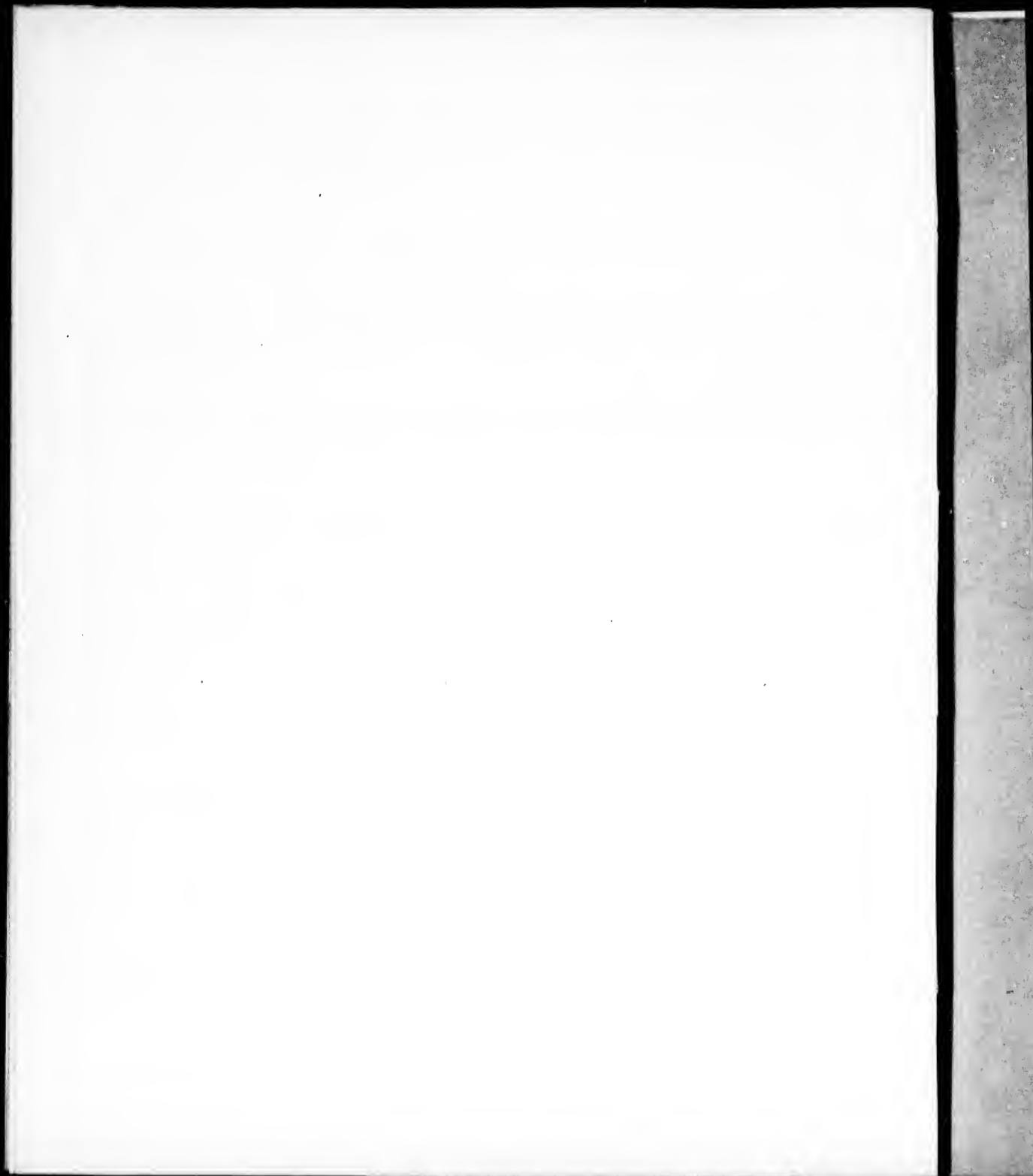
Les exemplaires originaux dont la couverture en papier est imprimée sont filmés en commençant par le premier plat et en terminant soit par la dernière page qui comporte une empreinte d'impression ou d'illustration, soit par le second plat, selon le cas. Tous les autres exemplaires originaux sont filmés en commençant par la première page qui comporte une empreinte d'impression ou d'illustration et en terminant par la dernière page qui comporte une telle empreinte.

Un des symboles suivants apparaîtra sur la dernière image de chaque microfiche, selon le cas: le symbole  $\rightarrow$  signifie "A SUIVRE", le symbole  $\nabla$  signifie "FIN".

Les cartes, planches, tableaux, etc., peuvent être filmés à des taux de réduction différents. Lorsque le document est trop grand pour être reproduit en un seul cliché, il est filmé à partir de l'angle supérieur gauche, de gauche à droite, et de haut en bas, en prenant le nombre d'images nécessaire. Les diagrammes suivants illustrent la méthode.

rrata  
to

pelure,  
n à



## FRENCH-CANADIAN MISSION.



### APPEAL TO THE EVANGELICAL CHURCHES OF GREAT BRITAIN.

MONTRÉAL, 5th September, 1850.

DEAR FRIENDS AND BRETHREN IN CHRIST JESUS,

We venture again respectfully and hopefully to appeal to you on behalf of the highly-important Mission in which we are engaged, and, in doing so, invite your attention to the following facts and considerations:—

**THE STATE OF THE FIELD.**—About 600,000 of the inhabitants of Lower Canada are of French origin, and speak the French language. They are a people naturally of intelligent and amiable character, but deeply sunk in ignorance and superstition. Romanism has here full sway. Its priests are numerous and wealthy, and their power over the people almost unbounded. We need not tell you what Romanism is; whatever it is in Ireland, or Belgium, or Italy, it is here. In none of these countries does it display a higher degree of grasping ambition, or a stronger attachment to superstitions, forms, and ceremonies, or a more determined hostility to the Word of God. Of late the most strenuous efforts have been made to control and monopolise the education of the people. A large number of Jesuits and Friars, or Brethren of the so-called Christian schools, as well as Nuns of different orders, are establishing themselves throughout the Province, and immense sums of money are expended in the erection of colleges and seminaries, where their pernicious principles may be infused into the minds of the rising generation. Yet, at the present time, indications of a hopeful character are not wanting. The desire of instruction begins to spread, and long-cherished prejudices to give way; while some are inquiring after another path to a blessed immortality than that which they have hitherto been taught to follow.

**THE AGENCY EMPLOYED.**—With a view to the evangelisation of this portion of our fellow-countrymen our Missionary Society was formed in 1839. Its constitution is catholic, like those of the Evangelical Societies of Geneva and Paris, and it numbers amongst its members, and on its

committee, ministers and members of the various evangelical denominations in the Province. Its Missionaries entered the field in 1840, since which time the work has been prosecuted with encouraging success. The means which it employs are, the preaching of the Gospel, the circulation of the Scriptures and scriptural books and tracts, and the education of the young. There are in connection with the Society two ordained ministers, six colporteurs, and two teachers, with their wives, three of whom are engaged in the tuition of young French Canadian females. The Missionaries, who are selected and approved by a committee in Geneva, consisting of Dr. Merle D'Aubigne, Dr. Malan, and others, have proved themselves able and devoted, and the Lord has graciously permitted them to see fruits of their labours. A large number of the people have been visited from house to house, and several thousand copies of the Word of God, with large numbers of religious books and tracts, have been put into their hands.

**THE RESULTS.**—About eighty persons have been admitted to church fellowship, of whom about sixty still remain in connection with the mission churches. Of the remainder, some have been called away by death, while others have returned to the United States.

Besides these, considerable numbers have left the Church of Rome, but have not yet given evidence of conversion to Christ. About one hundred and twenty French Canadian boys, and sixty girls, have received, or are now receiving, a good common, and above all, thoroughly scriptural, education, in the Mission schools, where there are at present upwards of eighty pupils, male and female, and many others are desirous to enter, were we only in circumstances to receive them. The principal of these schools is at Pointe aux Trembles, near Montreal; and it is in special connection with this Institution that we make the present appeal.

**PRIMARY EXPENDITURES.**—The circumstances which led to these are simply as follow:—About five years ago, the rapidly increasing number of pupils rendered increased accommodation absolutely necessary, and accordingly a farm was purchased, on which the pupils might labour a portion of their time, and a plain but substantial brick building erected upon it, capable of accommodating over a hundred scholars, with their teachers. This, with the farm and out-buildings, cost upwards of £3000. Had the commercial prosperity which at that time smiled upon the Province continued, there is little doubt that the whole would, ere now, have been paid. After much effort, however, about one-third of the above-mentioned sum—£1150, or £940 sterling—still remains unpaid; and is secured by a mortgage on the property, which falls due in the course of the ensuing winter, and requires to be provided for.

**CLAIMS.**—We fully acknowledge that the primary obligation devolves upon ourselves and the Protestant inhabitants of the Province generally, but, at the same time, we must be permitted to suggest, that Canada, as a part of the British Empire, has also special claims upon you. To these claims some among you have responded in a manner that calls forth our warmest gratitude; still we cannot disguise the conviction that, generally speaking, they have not hitherto met with that degree of consideration in Britain which their weight and importance merit.

It ought to weigh with you, dear friends, that Canada has long been a neglected field. For three-fourths of a century its people were under British rule, and accessible to British Christian efforts, before any definite effort was made; and this while Missions were established in India, Africa, China, and other countries, whose necessities were scarcely greater, whilst their claims were less direct.

Neither ought it to be forgotten that Canada is the home of many of your countrymen, friends, and relations; and that on the ascendancy of evangelical principles here, depends the preservation to them and to their children of the inestimable blessings of civil and religious liberty.

We pray you also to consider that the present is, as we have above explained, a favourable juncture for effort among the French Canadians.

Finally, we would have you to reflect, that the Institution in behalf of which we specially plead is the great hope of French Canadian evangelisation. God has already blessed it to the conversion of not a few; and it is here we confidently anticipate that it will please Him, out of many who are

Its  
over-  
the  
tion  
e of  
are  
and  
see  
and  
have

urch  
der,

ivon  
sixty  
ral,  
male,  
cipal  
this

v.—  
bso-  
on of  
over  
000.  
ittle  
d of  
ort-  
for.  
the  
sug-  
ims  
not  
con-

For  
rts,  
ina,  
ads,  
to

ble  
ead  
ion  
are



Wm  
L  
M  
G  
G  
J  
J  
J  
J

receiving a religious education, to raise up a goodly number of faithful men, who shall go forth to labour among their countrymen as teachers, colporteurs, and evangelists,—with all the advantages of identity of language, habits, and sympathies,—with the love of their kinsmen according to the flesh,—added to the desire common to all Christians for the salvation of men of every kingdom and tongue.

REV. J. E. TANNER'S MISSION.—In order that this matter may be more vividly brought before you, we commission our beloved senior Missionary, the Rev. JEAN E. TANNER, whose name is well known to some amongst you, and dear to the Churches of Christ in Canada and Switzerland, to proceed to Great Britain, and inform you more fully of the religious condition of the French Canadians, and of the prospects of the gospel amongst them. We pray you to receive him in the Lord, to encourage him by your kind attentions, your labours, your prayers, and your liberality. Permit us to hope that in a few months you will put into his hands a sum sufficient to release our Mission from its present difficulties, and to enable it to prosecute its work with renewed vigour.

Praying that the Lord may bless you in your souls, and in your endeavours for His glory, we remain yours in the bond of the gospel,

- |  |                         |
|--|-------------------------|
| G. P. WILGESS, President.                                    |                         |
| JOS. WENHAM,   | } Vice-Presidents.      |
| J. REDPATH,  |                         |
| W. TAYLOR, Minister, United Presbyterian Church,             |                         |
| JOHN DOUGALL,  |                         |
| JAMES COURT, Treasurer.                                      |                         |
| HENRY WILKES, D.D., Minister of First Congregational Church, | } Honorary Secretaries. |
| J. McLOUD, Minister of American Presbyterian Church,         |                         |
| JOHN BLACK, General Secretary.                               |                         |
| JOHN JENKINS, Superintendent Wesleyan Minister,              | } Members of Committee. |
| WM. BOND, St. George's, Church of England,                   |                         |
| F. H. MARLING, Minister of Second Congregational Church,     |                         |
| WM. RINTOUL, Minister of Presbyterian Church of Canada,      |                         |
| A. F. HOLMES, M.D.,  |                         |
| J. H. MAITLAND,  |                         |
| JAMES R. ORR,  |                         |
| D. DAVIDSON,   |                         |
| ROB. ANDERSON,   |                         |
| E. L. MONTIZAMBERT, Advocate,                                |                         |
| JOHN C. BECKET,  |                         |
| NORMAN S. FROST,   |                         |
| JAMES MILNE,   |                         |
| HENRY VENNOR,  |                         |

Wm Anderson £25	James Linnie £10
W D Paton — 20	P. Buchanan — 10
Wm Thomson — 15	Sam & Alex Allan — 10
Geo Smith & Sons — 15	Richd Hadeth — 10
Geo Gillespie — 10	J. C. Orr — 10
John Playfair — 10	Wm Orr — 10
J. D. Bryce — 10	J W. Campbell — 10
J. H. Jones — 10	Wm Harriest — 10
J. Bartholomew — 10	R. Stevenson — 10

