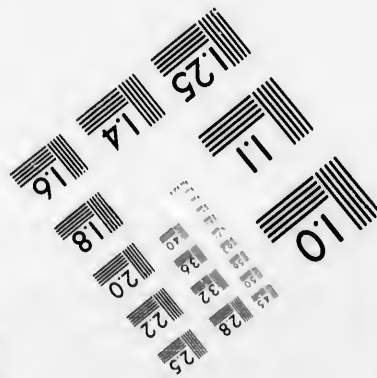
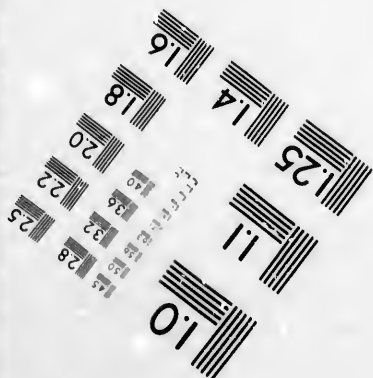
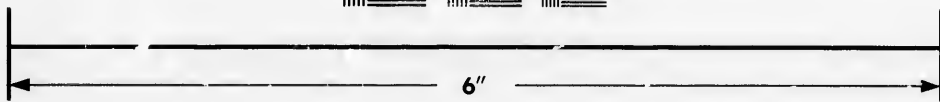
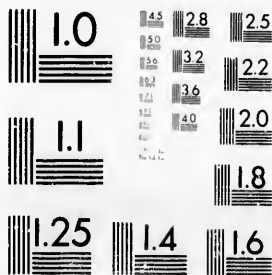


**IMAGE EVALUATION
TEST TARGET (MT-3)**



**Photographic
Sciences
Corporation**

23 WEST MAIN STREET
WEBSTER, N.Y. 14580
(716) 872-4503

Car

15 28 25
32 22
20
8

**CIHM/ICMH
Microfiche
Series.**

**CIHM/ICMH
Collection de
microfiches.**

10



Canadian Institute for Historical Microreproductions

Institut canadien de microreproductions historiques

1980

Technical and Bibliographic Notes/Notes techniques et bibliographiques

The Institute has attempted to obtain the best original copy available for filming. Features of this copy which may be bibliographically unique, which may alter any of the images in the reproduction, or which may significantly change the usual method of filming, are checked below.

L'Institut a microfilmé le meilleur exemplaire qu'il lui a été possible de se procurer. Les détails de cet exemplaire qui sont peut-être uniques du point de vue bibliographique, qui peuvent modifier une image reproduite, ou qui peuvent exiger une modification dans la méthode normale de filmage sont indiqués ci-dessous.

- | | |
|--|--|
| <input type="checkbox"/> Coloured covers/
Couverture de couleur | <input type="checkbox"/> Coloured pages/
Pages de couleur |
| <input type="checkbox"/> Covers damaged/
Couverture endommagée | <input type="checkbox"/> Pages damaged/
Pages endommagées |
| <input type="checkbox"/> Covers restored and/or laminated/
Couverture restaurée et/ou pelliculée | <input type="checkbox"/> Pages restored and/or laminated/
Pages restaurées et/ou pelliculées |
| <input type="checkbox"/> Cover title missing/
Le titre de couverture manque | <input checked="" type="checkbox"/> Pages discoloured, stained or foxed/
Pages décolorées, tachetées ou piquées |
| <input type="checkbox"/> Coloured maps/
Cartes géographiques en couleur | <input type="checkbox"/> Pages detached/
Pages détachées |
| <input type="checkbox"/> Coloured ink (i.e. other than blue or black)/
Encre de couleur (i.e. autre que bleue ou noire) | <input type="checkbox"/> Showthrough/
Transparence |
| <input type="checkbox"/> Coloured plates and/or illustrations/
Planches et/ou illustrations en couleur | <input type="checkbox"/> Quality of print varies/
Qualité inégale de l'impression |
| <input type="checkbox"/> Bound with other material/
Relié avec d'autres documents | <input type="checkbox"/> Includes supplementary material/
Comprend du matériel supplémentaire |
| <input type="checkbox"/> Tight binding may cause shadows or distortion
along interior margin/
La reliure serrée peut causer de l'ombre ou de la
distortion le long de la marge intérieure | <input type="checkbox"/> Only edition available/
Seule édition disponible |
| <input type="checkbox"/> Blank leaves added during restoration may
appear within the text. Whenever possible, these
have been omitted from filming/
Il se peut que certaines pages blanches ajoutées
lors d'une restauration apparaissent dans le texte,
mais, lorsque cela était possible, ces pages n'ont
pas été filmées. | <input type="checkbox"/> Pages wholly or partially obscured by errata
slips, tissues, etc., have been refilmed to
ensure the best possible image/
Les pages totalement ou partiellement
obscurcies par un feuillet d'errata, une pelure,
etc., ont été filmées à nouveau de façon à
obtenir la meilleure image possible. |
| <input type="checkbox"/> Additional comments:/
Commentaires supplémentaires: | |

- This item is filmed at the reduction ratio checked below/
Ce document est filmé au taux de réduction indiqué ci-dessous.

10X	12X	14X	16X	18X	20X	22X	24X	26X	28X	30X	32X
					✓						

The copy filmed here has been reproduced thanks to the generosity of:

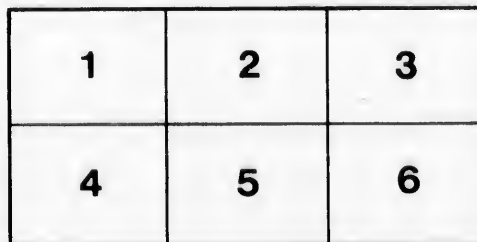
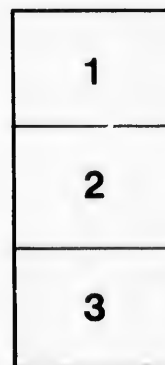
Douglas Library
Queen's University

The images appearing here are the best quality possible considering the condition and legibility of the original copy and in keeping with the filming contract specifications.

Original copies in printed paper covers are filmed beginning with the front cover and ending on the last page with a printed or illustrated impression, or the back cover when appropriate. All other original copies are filmed beginning on the first page with a printed or illustrated impression, and ending on the last page with a printed or illustrated impression.

The last recorded frame on each microfiche shall contain the symbol \rightarrow (meaning "CONTINUED"), or the symbol ∇ (meaning "END"), whichever applies.

Maps, plates, charts, etc., may be filmed at different reduction ratios. Those too large to be entirely included in one exposure are filmed beginning in the upper left hand corner, left to right and top to bottom, as many frames as required. The following diagrams illustrate the method:



L'exemplaire filmé fut reproduit grâce à la générosité de:

Douglas Library
Queen's University

Les images suivantes ont été reproduites avec le plus grand soin, compte tenu de la condition et de la netteté de l'exemplaire filmé, et en conformité avec les conditions du contrat de filmage.

Les exemplaires originaux dont la couverture en papier est imprimée sont filmés en commençant par le premier plat et en terminant soit par la dernière page qui comporte une empreinte d'impression ou d'illustration, soit par le second plat, selon le cas. Tous les autres exemplaires originaux sont filmés en commençant par la première page qui comporte une empreinte d'impression ou d'illustration et en terminant par la dernière page qui comporte une telle empreinte.

Un des symboles suivants apparaîtra sur la dernière image de chaque microfiche, selon le cas: le symbole \rightarrow signifie "A SUIVRE", le symbole ∇ signifie "FIN".

Les cartes, planches, tableaux, etc., peuvent être filmés à des taux de réduction différents. Lorsque le document est trop grand pour être reproduit en un seul cliché, il est filmé à partir de l'angle supérieur gauche, de gauche à droite, et de haut en bas, en prenant le nombre d'images nécessaire. Les diagrammes suivants illustrent la méthode.

ails
du
odifier
une
image

s

errata
to

pelure,
on à



32X

The Flora of Montreal Island.

By ROBERT CAMPBELL, D.D., M.A.

For some years I have felt, in common with others interested in our local Natural History, that it is a pity we have not a complete list of the plants growing on our own island, and when giving a paper in March, 1891, on the Summer Wild Flowers of Great Britain, I volunteered to do what I could personally to repair the want, an undertaking which the Natural History Society was pleased to approve. Throughout the season of 1891, I kept my eyes open where ever I chanced to be on the island, in the prosecution of duty or in pursuit of recreation, and I succeeded in securing specimens of the following plants, which I have mounted and presented to the museum of the Natural History Society. After I had entered on my voluntary task, the Botanical Club of Canada was formed, during the sitting of the Royal Society in this city in 1891, and it has mapped out the Dominion for Botanical purposes, assigning each county or group of counties to certain well known naturalists who are asked to take the oversight of the botanical research in their respective districts, securing the co-operation of local workers in this department, cheering them on and directing their enthusiasm. Anything I can do in connection with this joint movement, I shall be glad to attempt, and if the results I reach can be utilized by the Botanical Club, I put them entirely at its disposal. On the other hand, as one person cannot be expected to fall upon everything that grows on the island, I crave the help of every botanist in the district in the effort to secure as complete a catalogue as possible of our local flora. A well assorted cabinet of the plants growing around the city, placed in the museum of the Natural History Society, and thus put within reach of all among our citizens that are interested in this delightful science, would be a great boon; and the wonder is that an attempt to secure it has not been long ago made.

1892
C189

I am not overlooking the Holmes' collection, nor am I unmindful of its great scientific value. But it should not be forgotten that seventy years have elapsed since it was made, and very great and important changes must have come over the flora of the district in the interval. Besides, Dr. Holmes' Herbarium did not profess to be solely a Montreal island collection, much less did it claim to present a complete catalogue of the plant-life of the island. The bulk of the specimens which he preserved for the instruction of later generations, as might be expected, were indeed gathered in the neighborhood of the city, picked up, many of them, doubtless, while he was prosecuting his professional work. To this extent, it may be taken as a complete Montreal collection, that it represents the island plants which came under Dr. Holmes' notice, or of which he became possessed. Other places are credited occasionally as the *habitat* of the specimens embraced, but whenever a plant was found in or near the city, Montreal was invariably first mentioned among the localities in which it grew. When Montreal is not credited with a plant, it may therefore be taken for granted that Dr. Holmes never came across the plant on the island. It will be interesting to note how far the flora of Montreal to-day corresponds with that of seventy years ago; and I have compared the collection I have so far made with the Herbarium of Dr. Holmes, with the object of finding out what changes, if any, have come about. Or rather I have taken the catalogue of the Herbarium, prepared by the late Prof. James Barnston, and published in "The Canadian Naturalist and Geologist," for April, 1859, as the basis of comparison; and I shall assume that Prof. Barnston's nomenclature is correct and in agreement with the classification of Gray, as it claimed to be.

Clematis Virginiana, L.—Common Virgin's Bower.—August. Mountain Park, south of Park Ranger's house. (Holmes).

Clematis verticillaris, DC.—Virgin's Bower—Mountain above Ravenscrag and elsewhere. (Holmes' *Atragene Americana*). June.

Anemone Virginiana, Gray.—Virginian Anemone.—North end of mountain, and common on the island. June.

Anemone Pennsylvanica, L.—Pennsylvanian Anemone.—(Holmes). June. Common.

Hepatica acutiloba, DC.—Sharplobed Hepatica.—North end of Mount Royal. April and May.

Hepatica triloba, Chaix.—Round-lobed Hepatica.—South end of Mount Royal, and Petite Cote Woods. (Holmes)—April and May.

Thalictrum dioicum, L.—Early Meadow-rue.—Common. (Holmes). April and May.

Thalictrum polygamum, Muhl., (T. Cornuti, Holmes).—Fall Meadow-rue.—Common. July and August.

Ranunculus abortivus, L.—Small-flowered Crowfoot:—Everywhere. (Holmes). April and May.

Ranunculus sceleratus, L.—Cursed Crowfoot.—Wet meadow at Hochelaga. June.

Ranunculus repens, L.—Creeping Crowfoot. — Common. July and August. (Holmes).

Ranunculus acris, L.—Tall Crowfoot or Buttercup.—June, September. Common. (Holmes).

Ranunculus fascicularis.—Early Crowfoot.—Hochelaga bank. May.

Ranunculus septentrionalis, Poir.—Northern Crowfoot.—Prince Arthur street. May.

Caltha palustris, L.—Marsh Marigold.—May. Meadows, St. Cunegonde and Lachine. (Holmes).

Coptis trifolia, Salisb.—Three-leaved Gold Thread.—May, Mount Royal and Hochelaga banks. (Holmes).

Aquilegia Canadensis, L.—Wild Columbine.—West side Mt. Royal, common. May and June. (Holmes).

Aquilegia vulgaris.—Common Garden Columbine.—Escaped from cultivation, St. Laurent road. May and June.

Actea spicata, L., var. *rubra*. Michx.—Red Baneberry.—Common. May. (Holmes).

Actæa alba, Bigel.—White Baneberry.—Common. May. (Holmes).

Caulophyllum thalictroides, Michx.—Blue Cohosh.—North end of mountain and elsewhere. May.

Nuphar advena, Ait.—Common Yellow Pond Lily.—River St. Pierre. July. (Holmes).

Chelidonium majus, L.—Celandine.—Fletcher's Field, common. (Holmes). May.

Sanguinaria Canadensis.—Bloodroot.—Common. April. (Holmes).

C *Dicentra cucullaria*.—Dutchman's Breeches.—Petite Cote woods. (Holmes' *corydalis cucullaria*). May.

Corydalis glauca.—Pale Corydalis. — (Holmes). June. Mountain.

Nasturtium officinale, R.Br.—Water Cress.—Below bridge, near junction of cemeteries. July.

Nasturtium palustre, DC. — Marsh Cress. — (Holmes' *sisymbrium palustre*). June. Common.

A *Nasturtium ~~armoricum~~ ^{arabizans}*, Fries.—Horse Radish.—Creek near Cote des Neiges. June.

Dentaria diphylla, L.—Two-leaved Toothwort.—Mountain, common. May and June. (Holmes).

Arabis levigata, DC.—Smooth Rock Cress.—Mountain, near Park Ranger's house. June. (Holmes' *turritis levigata*).

Erysimum cheiranthoides, L.—Wormseed Mustard.—Fletcher's Field. June.

Sisymbrium officinale, Scop.—Hedge Mustard.—Common. June.

Brassica sinapistrum, Bois.—Charlock.—Common. June.

Brassica alba, L.—White Mustard.—(Holmes' *sinapis alba*). Common. June.

Brassica nigra, L.—Black Mustard.—(Holmes' *sinapis nigra*). Common. June.

Draba arabisans, Michx.—Whitlow Grass.—Outremont. June.

Capsella bursa-pastoris, Moench.—Shepherd's Purse—Common. May. (Holmes' *thlaspe bursa-pastoris*).

Thlaspi arvense, L.—Field Penny Cress.—(Holmes). Common. July.

Lepidium virginicum, L.—Wild Pepper Grass.—Common on streets. August. (Holmes).

Lepidium campestre, L.—Peppergrass.—Cote St. Louis. August.

Viola blanda, Willd.—Sweet White Violet.—Common. May. (Holmes).

Viola cucullata, Ait.—Common Blue Violet.—Common. May. (Holmes).

Viola pubescens, Ait.—Downy Yellow Violet.—Common. May. (Holmes).

Viola Canadensis, L.—Canada Violet.—Common. May. (Holmes).

Viola canina, L., var. *Sylvestris*, Regel.—Dog Violet.—Hochelega banks. May.

Helianthemum Canadense, Michx.—Frost Weed.—Petite Cote. June.

Hypericum perforatum, L.—Common St. John's Wort.—Common. July. (Holmes).

Hypericum mutilum, L.—Small St. John's Wort.—Hochelega banks. July. (Holmes' *hypericum parviflorum*).

Hypericum corymbosum, Muhl.—Corymbed St. John's Wort.—Cote St. Paul. August.

Elodes virginica, Nutt.—Marsh St. John's Wort.—Bout de L'isle. August.

Saponaria officinalis, L.—Bouncing Bet.—Park Avenue. August.

Silene cucubalus, Wibel.—Bladder Champion.—Common. July.

Silene Pennsylvanica, Michx.—Wild Pink.—Field near Hochelega bank. September.

Silene noctiflora, L.—Night Flowering Catchfly.—Fletcher's Field. July.

Lychnis githago, Lam.—Corn Cockle.—Common. July.

Stellaria media, Smith.—Common Chickweed.—Common. July. (Holmes' *alsine media*).

Stellaria longifolia, Muhl.—Longleaved Stitchwort.—June. Cote St. Antoine. (Holmes' *stellaria graminea*).

Cerastium viscosum, L.—Larger Mouse-ear Chickweed.—June. Common. (Holmes).

Cerastium arvense, L.—Field Chickweed.—July. Common.

Cerastium nutans, Raf.—Nodding Chickweed.—Petite Cote. August.

Portulaca oleracea, L.—Common Purslane. — August. Common. (Holmes).

Claytonia Caroliniana, Michx.—Spring Beauty.—May. Common. (Holmes' *C. Virginica*).

Malva rotundifolia, L.—Round Leaved Mallow.—June. Common. (Holmes).

Tilia Americana, L.—Basswood.—May. Common.

Linum usitatissimum, L.—Common Flax.—Cote St. Louis and elsewhere. Strayed from cultivation. August.

Oxalis acetosella, L.—White Woodsorrel.—July. Hoche-laga woods. (Holmes).

Oxalis stricta, L.—Yellow Woodsorrel.—June. Common. (Holmes' *O. Dillenii*).

Impatiens fulva, Nutt.—Spotted Touch-me-not.—July. Common. (Holmes *I. noli-me-tangere*).

Impatiens pallida, Nutt.—Pale Touch-me-not.—August. Common. (Holmes *I. biflora*).

Zanthoxylum Americanum, Mill.—Northern Prickly Ash.—April. Field near Petite Cote. (Holmes' *Z. fraxineum*).

Rhus typhina, L.—Staghorn Sumach.—Mt. Royal. July. (Holmes).

Rhus toxicodendron, L.—Poison Ivy.—June. Common. (Holmes).

Vitis cordifolia, Michx.—Frost Grape.—June. Common. (Holmes' *V. riparia*).

Ampelopsis quinquefolia, Michx.—Virginia Creeper.—Mountain and along fences on island. July. (Holmes' *cissus hederacea*).

Celastrus scandens, L.—Climbing Bitter-sweet.—June. Common on fences over the island. (Holmes).

Acer Pennsylvanicum, L.—Striped Maple.—May. North end of mountain.

Acer spicatum, Lam.—Mountain Maple.—May. Common. (Holmes).

Acer saccharinum, Wang.—Sugar Maple.—May. Lachine and elsewhere on island. (Holmes).

Acer dasycarpum, Ehrhart.—Silver Maple.—April. Common.

Acer rubrum, L.—Red Maple.—May. Common. (Holmes).

Trifolium pratense, L.—Red Clover.—June. Common. (Holmes).

Trifolium repens, L.—White Clover.—June. Common. (Holmes).

Trifolium agrarium, L.—Hop Clover.—June. Hochelaga bank.

Trifolium procumbens, L.—Low Hop Clover.—July. Hochelaga bank.

Medicago lupulina, L.—Black Medick.—June. Everywhere.

Melilotus officinalis, Willd.—Yellow Sweet Clover.—June. Everywhere.

Melilotus alba, Lam.—White Sweet Clover.—June. Common.

Robinia pseudacacia, L.—Common Locust.—June. St. Michel.

Desmodium acuminatum, DC.—Tick Trefoil.—August. Mountain. (Holmes' *Hedysarum acuminatum*).

Desmodium Dillenii, Darling.—Tick Trefoil.—August. Northern part of Mountain.

Desmodium Canadense, DC.—Tick Trefoil.—August. Park near north end of mountain. (Holmes' *Hedysarum Canadense*).

Vicia sativa, L.—Common Vetch.—July. Common. (Holmes).

Vicia cracca, L.—Tufted Vetch.—June. Everywhere. (Holmes).

Amphicarpæa monoica, Nutt.—Hog Peanut.—August. Overruns cemetery woods. (Holmes' *glycine monoica*).

Prunus Americana, Marshall.—Wild Plum.—Around mountain. May.

Prunus Pennsylvanica, L.—Wild Red Cherry.—Common. May. (Holmes).

§ *Prunus Serotina*, Ehrhart.—Wild Black Cherry.—Papineau Road and Petite Cote. June.

Prunus Virginiana, L.—Choke-cherry.—Very common. May. (Holmes' *P. serotina*).

Spiræa salicifolia, L.—Common Meadow-sweet.—Common. August. (Holmes' *S. latifolia*).

Agrimonia eupatoria, L.—Common Agrimony.—July. Common. (Holmes).

Poterium Canadense, Benth and Hook.—Canadian Burnet.—Savanne, St. Michel. September. (Holmes' *sanguisorba Canadensis*).

Geum album, Gmelin.—White Avens.—June. Hochelaga woods. (Holmes).

Geum strictum, Ait.—Yellow Avens.—June. Common. (Holmes).

Geum rivale, L.—Purple Avens.—July. Common. (Holmes).

Potentilla Norvegica, L.—Norway Cinque-foil.—July. Common. (Holmes).

Potentilla Canadensis, L.—Canada Cinque-foil.—June. Hochelaga bank. (Holmes' *P. simplex*).

Potentilla anserina, L.—Silver Weed.—June. Common. (Holmes).

Potentilla fruticosa, L.—Shrubby Cinque-foil.—Savanne, St. Michel. September. (Holmes).

Fragaria Virginiana, Ehrhart.—Common Strawberry.—May. Common. (Holmes).

Fragaria vesca, L.—Sharp Pointed Strawberry.—June. Common in woods.

Rubus odoratus, L.—Purple Flowering Raspberry.—Mountain and elsewhere. June. (Holmes).

Rubus triflorus, Richardson.—Dwarf Raspberry.—Hoche-laga banks and elsewhere. May. (Holmes).

Rubus strigosus, Michx.—Wild Red Raspberry.—June. All over the island. (Holmes).

Rubus occidentalis, L.—Black Raspberry.—East side of mountain. June. (Holmes).

Rubus villosus, Ait.—High Blackberry.—North end of mountain. June. (Holmes).

Rubus hispidus, L.—Running Swamp Blackberry.—Swamp between cemeteries. June.

Rosa blanda, Ait.—Early Wild Rose.—East end of mountain. June.

Rosa Carolina, L.—Swamp Rose.—Papineau woods. July. (Holmes).

Rosa rubiginosa, L.—Sweet Brier.—Mountain, Outremont and elsewhere. June. (Holmes).

Crataegus coccinea, L.—Scarlet Fruited Thorn.—Mountain. May. (Holmes).

Crataegus tomentosa, L.—Black or Pear Thorn.—North end of mountain and elsewhere. June. (Holmes).

Crataegus crusgalli, L.—Cockspur Thorn.—North end of mountain. June. (Holmes).

Pyrus arbutifolia, L.—Chokeberry.—Cote St. Paul. June. (Holmes' aronia melanocarpa).

Pyrus americana, D. C.—American Mountain Ash.—June. (Holmes' sorbus Americana).

Amelanchier Canadensis, var. *rotundifolia*, Torr and Gray.
—Shadbush.—May. Mountain. (Holmes' *aronia ovalis*).

Amelanchier Canadensis, var. *Botryapium*, Torr and Gray.
—Juneberry.—May. Hochelaga banks. (Holmes' *aronia botryapium*).

Ribes cynosbati, L.—Wild Gooseberry.—Between cemeteries. May. (Holmes' *ribes triflorum*).

Ribes hirtellum, Michx.—Small Wild Gooseberry.—June. St. Michel.

Ribes lacustre, Poir.—Swamp Gooseberry.—Hochelaga banks. June. (Holmes).

Ribes floridum, L.—Wild Black Currant. May. Between cemeteries. (Holmes).

Ribes rubrum, L.—Wild Red Currant.—May. Hochelaga banks. (Holmes).

Parnassia Caroliniana, Michx.—Grass of Parnassus.—September. Savanne, St. Michel.

Saxifraga Virginiensis, Michx.—Early Saxifrage.—May. Mountain. (Holmes' *S. nivalis*).

Mitella diphylla, L.—Two-leaved Mitre-wort.—Base of mountain. May. (Holmes).

Mitella nuda, L.—Naked Stalked Mitella.—Hochelaga woods. June. (Holmes' *M. cordifolia*).

Tiarella cordifolia, L.—False Mitre-wort.—May. Base of mountain. (Holmes).

Penthorum sedoides, Gronov.—Ditch Stonecrop.—Cote St. Paul. July. (Holmes).

Circæa lutetiana, L.—Enchanter's Nightshade.—Hochelaga woods. July. (Holmes).

Circæa Alpina, L.—Small Enchanter's Nightshade.—Mountain. July. (Holmes).

Epilobium angustifolium, L.—Great Willow Herb.—July. Hochelaga woods and elsewhere. (Holmes).

Epilobium palustre, L., var. *lineare*.—Epilobe.—August. (Holmes).

- Epilobium molle*, Torr.—Epilobe.—August. Cote St. Paul.
- Epilobium coloratum*, Muhl.—Epilobe Swamp.—St. Michel. (Holmes' *E. tetragonum*).
- Enothera biennis*, L.—Common Evening Primrose.—August. St. Michel and elsewhere. (Holmes).
- Enothera pumila*, L.—Small Evening Primrose.—Hoche-laga bank. June. (Holmes' *E. pusilla*).
- Sicyos angulatus*, L.—Star Cucumber.—Fletcher's Field. September. (Holmes).
- Sanicula Mari'andica*, L.—Snakeroot.—June. Mountain. (Holmes).
- Daucus carota*, L.—Common Carrot.—June. Road-sides.
- Heracleum lanatum*, Michx.—Cow Parsnip.—Cote St. Paul and elsewhere. June. (Holmes).
- Pastinaca sativa*, L.—Common Parsnip.—June. Road-sides. (Holmes).
- Conioselinum Canadense*, Torr. and Gray.—Hemlock Parsley.—Back River and elsewhere.
- Cicuta maculata*, L.—Spotted Cowbane.—Cote St. Paul. July. (Holmes).
- Sium lineare*, Michx.—Water Parsnip.—August. Pointe-aux-Trembles. (Holmes).
- Carum carui*, L.—Caraway.—June. Roadsides, in many places.
- Osmorrhiza longistylis*, DC.—Smoother Sweet Cicely.—June. Mountain side. (Holmes' *Myrrhis longistylis*).
- Osmorrhiza brevistylis*, DC.—Hairy Sweet Cicely.—June. Mountain side. (Holmes' *Chærophyllum Claytoni*).
- Aralia racemosa*, L.—Spikenard.—North end of mountain. July. (Holmes).
- Aralia nudicaulis*, L.—Wild Sarsaparilla.—June. Mountain sides and elsewhere. (Holmes).
- Aralia quinquefolia*, Decaisne.—Ginseng.—Hoche-laga woods. May. (Holmes' *panax quinquefolia*).

Aralia trifolia, Decaisne.—Dwarf Ginseng.—Hochelega woods and elsewhere. (Holmes).

Cornus Canadensis, L.—Bunchberry.—Papineau woods. June. (Holmes).

Cornus circinnata, L'Her.—Round-leaved Dogwood.—Outremont road. June. (Holmes).

Cornus stolonifera, Michx.—Redosier Dogwood.—July. Common. (Holmes' *C. alba*).

Linnaea borealis, Gronov.—Twin-flower.—Hochelega woods and Cote Michel. July. (Holmes).

Lonicera parviflora, Lam.—Small Honeysuckle.—June. Mountain. (Holmes).

Lonicera ciliata, Muhl.—Fly Honeysuckle.—North end of mountain. May. (Holmes' *Xylosteon ciliatum*).

Lonicera oblongifolia, Muhl.—Swamp Fly-Honeysuckle.—Buchanan's woods, St. Michel. August. (Holmes).

Diervilla trifida, Mœnch.—Bush Honeysuckle.—July. Mountain. (Holmes).

Sambucus Canadensis, L.—Common Elder.—Mountain sides and elsewhere. June. (Holmes).

Sambucus racemosa, L.—Redberried Elder.—May. Mountain sides and elsewhere. (Holmes' *S. pubescens*).

Viburnum opulus, L.—Cranberry Tree.—June. Back River road. (Holmes' *V. Oxycoccus*).

Viburnum Lentago, L.—Sheepberry.—Cote St Paul. June. (Holmes).

Viburnum acerifolium, L.—Maple-leaved Arrowwood.—June. Monté between St. Michel and Back River. (Holmes).

Lappa officinalis, All., var. *Major*, Gray.—Burdock.—June. Everywhere. (Holmes' *arctium lappa*).

Cirsium lanceolatum, Scop.—Common Thistle.—August. Everywhere.

Cirsium discolor, Spreng.—Tall Thistle.—August. St. Michel. (Holmes' *Cnicus altissimus*).

Cirsium muticum, Michx.—Swamp Thistle.—August. St. Michel. (Holmes' *enicus muticus*).

Cirsium arvense, Scop.—Canada Thistle.—August. Everywhere. (Holmes' *enicus horridulus*).

Xanthium strumarium, L., var. *Echinatum*, Gray.—Common Cocklebur. August. Common. (Holmes).

Ambrosia artemisiifolia, L.—Hogweed.—August. Everywhere. (Holmes).

Ambrosia trifida, L.—Great Ragweed.—August. Common. (Holmes).

Tanacetum vulgare, L.—Common Tansy.—August. Roadside in many places.

Artemisia vulgaris, L.—Common Mugwort.—August. Everywhere. (Holmes).

Gnaphalium decurrens, Ives.—Everlasting.—August. Common.

Gnaphalium polycephalum, Michx.—Common Everlasting.—August. Common.

Gnaphalium uliginosum, L.—Low Cudweed.—August. Common. (Holmes).

Antennaria plantaginifolia, Hook.—Plantain-leaved Everlasting.—May. Everywhere. (Holmes' *Gnaphalium plantaginifolium*).

Eupatorium purpureum, L.—Joe Pye Weed.—August. Mountain Park, Cote St. Paul. (Holmes' *E. verticillatum*).

Eupatorium perfoliatum, L.—Boneset.—August. Mountain Park, Cote St. Antoine. (Holmes).

Eupatorium ageratoides, L.—White Snakeroot.—August. Mountain Park, Cote St. Michel. (Holmes).

Senecio vulgaris, L.—Common Groundsel.—On all streets. July. (Holmes).

Senecio aureus, L.—Golden Ragwort.—August. St. Michel.

Solidago squarrosa, Muhl.—Golden Rod.—East slope of Mountain. August.

Solidago bicolor, L., var., *Concolor*.—Golden Rod.—Mountain base. August. (Holmes).

Solidago latifolia, L.—Golden Rod.—Mountain base. August. (Holmes).

Solidago Cesia, L., var. *axillaris*, Gray.—Golden Rod.—Mountain base. August. (Holmes' *S. livida*).

Solidago Canadensis, L.—Golden Rod.—August. Common. (Holmes).

Solidago lanceolata, L.—Golden Rod.—August. Mountain base. (Holmes).

Aster macrophyllus, L. — Starwort. — Mountain sides. August. (Holmes).

Aster azureus, Lindl.—Aster.—Cote St. Paul. August.

Aster cordifolius, L. — Aster. — August. Everywhere. (Holmes).

Aster sagittifolius, Willd. — Aster. — September. Very common. (Holmes).

Aster levis, L.—Aster.—August. Mountain.

Aster puniceus, L.—Aster. — August. Cote St. Paul. (Holmes).

Aster multiflorus, Ait.—Aster.—August. Cote St. Paul.

Aster tenuifolius, L.—Aster.—August. Mountain base.

Aster acuminatus, Michx. — Starwort. — Park woods. August.

Erigeron Canadense, L.—Horseweed.—August. Papineau Road. (Holmes).

Erigeron bellidifolium, Muhl.—Robin's plantain.—July. Mountain.

Erigeron Philadelphicum, L.—Common Fleabane.—June. South Mountain foot. (Holmes' *E. purpureum*).

Erigeron strigosum, Muhl. — Daisy Fleabane. — June. Pointe-aux-Trembles. (Holmes).

Erigeron annuum.—Larger Daisy Fleabane.—Cote des Neiges. August. (Holmes' *E. heterophyllum*).

Leucanthemum vulgare, Lam. — Oxeye Daisy. — June. Everywhere. (Holmes' *chrysanthemum*).

Anthemis cotula, DC.—Mayweed.—May. Everywhere. (Holmes).

Rudbeckia hirta, L.—Coneflower.—Petite Cote. July.

Helianthus divaricatus, L.—Wild Sunflower.—August. Cemeteries and Park.

Helianthus tuberosus, L.—Jerusalem Artichoke.—August. Prince Arthur street.

Bidens frondosa, L.—Common Beggar Ticks.—July. Fletcher's Field. (Holme's *B. pilosa*).

Bidens Connata, Muhl.—Swamp Beggar Ticks.—August. Cote St. Paul. (Holmes).

Bidens cernua, L.—Smaller Bur-marigold.—August. Long Pointe. (Holmes).

Achillea millefolium, L.—Milfoil.—June. Everywhere. (Holmes).

Cichorium Intybus, L.—Cichory.—July. Everywhere. (Holmes).

Hieracium Canadensis, Michx.—Canada Hawkweed.—August. Cemeteries. (Holmes' *H. kalmii*).

Hieracium scabrum, Michx.—Rough Hawkweed.—August. Papineau Road and elsewhere. (Holmes' *H. Marianum*).

Nabalus albus, Hock.—White Lettuce.—August. Common. (Holmes' *prenanthes alba*).

Nabalus altissimus, Hook.—Tall White Lettuce.—August. North end of mountain. (Holmes' *prenanthes cordata*).

Nabalus racemosus, Hook.—Rattlesnake Root.—August. Mountain Park and Cote St. Paul. Common. (Holmes' *prenanthes racemosa*).

Taraxacum dens-leonis, Desf.—Common Dandelion.—May. Everywhere. (Holmes' *leontodon taraxacum*).

Lactuca Canadensis, L.—Wild Lettuce.—North end of mountain. August. (Holmes' *lactuca elongata*).

Lactuca integrifolia, L.—Wild Lettuce.—August. Cemetery swamp. (Holmes' *L. elongata*).

Mulgedium leucophæum, DC.—False or Blue Lettuce.—

North end of mountain. August. (Holmes' *sonchus leucophæus*).

Sonchus oleraceus, L.—Common Sow-thistle.—July. Common. (Holmes).

Sonchus Asper, Vill.—Spring-leaved *Sonchus*. August. Fletcher's Field and Park.

Sonchus arvensis, L.—Field Sow-thistle.—Cote St. Antoine and St. Michel. August. (Holmes).

Tragopogon pratensis, L.—Yellow Goat's Beard.—July. Longue Pointe.

Lobelia cardinalis, L.—Cardinal Flower.—August. St. Michel. (Holmes).

Lobelia inflata, L.—Indian Tobacco.—August. Plateau, north end of mountain. Common. (Holmes).

Campanula Americana, L.—Tall Bell-flower.—Petite Cote and elsewhere on roadsides. August.

Vaccinium corymbosum, L.—Swamp Blueberry.—Hoche-laga banks. June. (Holmes).

Pyrola rotundifolia, L.—Wintergreen.—Mountain. July. (Holmes.)

Pyrola elliptica, Nutt.—Shinleaf.—Hoche-laga woods. July. (Holmes).

Pyrola secunda, var. *pumila*, L.—Wintergreen.—Hoche-laga woods. July. (Holmes).

Chimaphila umbellata, Nutt.—Prince's Pine.—August. Mountain, west side near Cemetery and Buchanan's woods, St. Michel, among pines. (Holmes' *pyrola umbellata*).

Plantago major, L.—Common Plantain.—August. Common. (Holmes).

Plantago lanceolata, L.—Rib-grass.—August. Common.

Trientalis Americana, Pursh.—Star-flower.—June. Hoche-laga woods. (Holmes).

Lysimachia Thyrsoflora, L.—Tufted Loosetrife.—June. Back River. (Holmes' *L. capitata*).

Lysimachia stricta, Ait.—Loosetrife.—June. Cote St. Paul. (Holmes' *L. racemosa*).

Lysimachia longifolia, Watt.—Loosestrife.—August. St. Michel.

Verbascum thapsus, L.—Common Mullein.—July. Common. (Holmes).

Veronica anagallis, L.—Water Speedwell.—Lachine. July. (Holmes).

Veronica scutellata, L.—Marsh Speedwell.—August. St. Michel. (Holmes).

Veronica peregrina, L.—Neckweed.—May. Common. (Holmes).

Veronica serpyllifolia, L.—Thyme-leaved Speedwell.—May. Hochelaga banks. (Holmes, at Berthier).

Linaria vulgaris, Mill.—Toad Flax.—July. Common on streets.

Scrophularia nodosa, L.—Figwort.—June. Common. (Holmes' S. Marilandica).

Chelone glabra, L.—Turtle Head.—August. St. Michel and between cemeteries.

Mimulus ringens, L.—Monkey Flower.—Hochelaga. July. (Holmes).

Gerardia tenuifolia, Vahl.—Slender Gerardia.—September. Savanne. St. Michel.

Pedicularis Canadensis, L.—Wood Betony.—May. Mountain base. (Holmes).

Verbena hastata, L.—Blue Vervain.—Hochelaga banks. June. (Holmes).

Verbena urticifolia, L.—Nettleleaved Vervain.—North base of mountain. August. (Holmes).

Phryma leptostachya, L.—Lopseed.—Savanne. St. Michel and mountain. August. (Holmes).

Teucrium Canadense, L.—American Germander.—August. St. Michel. (Holmes, at Boucherville).

Mentha viridis, L.—Spearmint.—Petite Cote. August. (Holmes' M. tenuis).

Mentha piperita, L.—Peppermint.—Point St. Charles. August.

Mentha Canadensis, L.—Wild Mint.—August. Common. (Holmes' *M. borealis*).

Lycopus Virginicus, L.—Bugle-weed.—Hochelega woods. August. (Holmes).

Lycopus Europæus, L., var. *Sinuatus*, Gray.—Water Horehound.—August. Common. (Holmes).

Nepeta cataria, L.—Catnip.—July. Common. (Holmes).

Nepeta glechoma, Benth.—Ground Ivy.—Fletcher's Field and elsewhere, near houses.

Lophanthus nepetoides, Benth.—Giant Hyssop.—August. Mountain, near Cote des Neiges toll bar. (Holmes' *Hyssopus petoides*).

Brunella vulgaris, L.—Common Heal-All.—July. Everywhere. (Holmes' *prunella vulgaris*).

Scutellaria galericulata, L.—Skullcap.—St. Michel. August. (Holmes).

Scutellaria lateriflora, L.—Mad-dog Skullcap.—August. St. Michel. (Holmes).

Galeopsis tetrahit, L.—Common Hemp-nettle.—August. Common. (Holmes).

Stachys palustris, L., var. *Aspera*, Gray.—Hedge-nettle.—Fletcher's Field. (Holmes, at Boucherville Island).

Leonurus cardiaca, L.—Common Motherwort.—August. Papineau common and elsewhere. (Holmes).

Lycopsis arvensis, L.—Bugloss.—June. Common. (Holmes).

Symphytum officinale, L.—Common Comfrey.—East side of mountain, near Cote des Neiges Road. June.

Echinosperrnum lappula, L. Lehm.—Stickseed.—June. Common. (Holmes' *Myosotis Lappula*).

Cynoglossum officinale, L.—Common Hound's Tongue.—June. Common. (Holmes).

Lithospermum hirtum, Lehm.—Hairy Puccoon.—May. Common.

Lithospermum officinale, L.—Common Gromwell.—May. Common. (Holmes).

Myosotis palustris, Withering, var. *laxa*, Gray.—Forget-me-not.—Pointe-aux-Trembles. June.

Myosotis arvensis, Hoffm.—Field Myosotis.—Cemetery Swamp. August.

Hydrophyllum Virginicum, L.—Waterleaf.—June. Base of mountain and elsewhere. (Holmes).

Calystegia sepium, R. Br.—Hodge Bindweed.—St. Michel Road. August. (Holmes' *convolvulus sepium*).

Calystegia spithamea, Pursh.—Bracted Bindweed.—Back River. June. (Holmes' *convolvulus stans*, at Three Rivers.)

Convolvulus arvensis, L.—Bindweed.—July. Fletcher's Field.

Hyoscyamus niger, L.—Black Henbane.—St. Famille street, Fletcher's Field and elsewhere. (Holmes).

Datura stramonium, L.—Common Thorn Apple.—St. Lawrence suburbs. August. (Holmes).

Gentiana Andrewsii, Griseb.—Closed Gentian.—St. Michel. August.

Apocynum androsæmifolium, L.—Dogbane.—June. Mountain. (Holmes).

Asclepias Cornuti, Decaisne.—Common Milkweed.—July. Common. (Holmes' *A. Syriaca*).

Fraxinus Americana, L.—White Ash.—Between Petite Cote and St. Michel, along fence. June. (Holmes' *F. Euptera*).

Fraxinus pubescens, Lam.—Red Ash.—Same locality. June.

Fraxinus sambucifolia, Lam.—Black Ash.—St. Michel woods. June. (Holmes).

Chenopodium album, L.—Lamb's Quarters.—July. Everywhere. (Holmes).

Chenopodium murale, L.—Pigweed.—August. Upper St. Urbain street.

Chenopodium hybridum, L.—Maple-leaved Goosefoot.—West side of mountain. August. (Holmes).

Blitum capitatum, L.—Strawberry Blite.—Fletcher's Field. August. (Holmes).

Atriplex patula, L.—Orache.—July. Everywhere on streets. (Holmes).

Amarantus retroflexus, L.—Pigweed.—August. Everywhere. (Holmes).

Polygonum aviculare, L.—Goose-grass.—August. Everywhere. (Holmes)

Polygonum incarnatum, Ell.—Knotweed.—August. Cote St. Paul.

Polygonum Pennsylvanicum, L.—Knotweed.—August. St. Urbain street. (Holmes).

Polygonum Persicaria, L.—Lady's Thumb.—July. Everywhere. (Holmes).

Polygonum amphibium, var. *aquaticum*, L.—Water Persicaria.—St. Michel. August. (Holmes).

Polygonum hydropiperoides, Michx.—Mild Water Pepper.—August. Cote St. Paul. (Holmes).

Polygonum acre, H. B. K.—Water Smartweed.—Petite Cote. August.

Polygonum hydropiper, L.—Common Smartweed.—August. Common.

Polygonum sagittatum, L.—Arrow-leaved Tear Thumb.—Mountain. August. (Holmes).

Polygonum convolvulus, L.—Black Bindweed.—Grain fields. August. (Holmes).

Polygonum dumetorum, L., var. *Scandens*, Gray.—Climbing False Buckwheat.—Cote St. Paul. (Holmes' P. *Scandens*).

Rumex orbiculatus, Gray.—Great Water Dock.—St. Michel, Savanne. August.

Rumex crispus, L.—Curled Dock.—July. Common. (Holmes).

Rumex obtusifolius, L.—Bitter Dock.—Cote des Neiges. August. (Holmes).

Rumex acetosella, L.—Sheep Sorrel.—May. Everywhere. (Holmes).

Fagopyrum esculentum, Mœnch.—Buckwheat.—Fletcher's Field and elsewhere. August.

Dirca palustris, L.—Leatherwood.—Petite Cote. April. (Holmes).

Euphorbia hypericifolia, L.—Spurge.—August. Fletcher's Field and elsewhere.

Euphorbia humistrata, Engelm. — Spurge. — August. Fletcher's Field.

Euphorbia obtusata, Pursh. — Spurge. — St. Lawrence suburbs. August.

Euphorbia platyphylla, L. — Spurge. — St. Lawrence suburbs. August.

Euphorbia Helioscopia, L.—Sunspurge.—July. Everywhere. (Holmes).

Euphorbia pepus, L.—Spurge.—August. Fletcher's Field and mountain base.

Euphorbia cyparissias, L.—St. Famille street and elsewhere. July.

Acalypha Virginica, L.—Three Seeded Mercury.—St. Famille street and elsewhere, very common. August. (Holmes' A. Caroliniana).

Ulmus fulva, Michx.—Slippery Elm.—April. Common. (Holmes).

Ulmus Americana, L.—White Elm.—April. Common. (Holmes).

Ulmus racemosa, Thomas.—Corky White Elm.—May. Along roadsides.

Urtica gracilis, Ait.—Nettle.—August. Along fences. (Holmes' *U. procera*).

Laportea Canadensis, Gandichaud. — Wood Nettle. — August. Back River. (Holmes' *Urtica divaricata*).

Cannabis sativa, L.—Hemp.—July. Common. Along roadsides. (Holmes).

Juglans cinerea, L.—Butternut.—Mountain sides and Petite Cote. (Holmes).

Carya amara, Nutt.—Swamp Hickory.—Petite Cote and mountain. May. (Holmes).

Carya alba, Nutt.—Shellbark Hickory.—West side of mountain. May. (Holmes).

Quercus rubra, L.—Red Oak.—May. Mount Royal. (Holmes).

Quercus macrocarpa, var. *Olivæformis*, Gray.—Bur Oak.—May. St. Laurent and elsewhere. (Holmes).

Fagus ferruginea, Ait.—American Beech.—May. West side of Mount Royal. (Holmes).

Corylus rostrata, Ait.—Beaked Hazel Nut.—June. Base of mountain. (Holmes' *C. anellana*).

Ostrya Virginica, Willd.—Iron Wood.—May. Mountain. (Holmes).

Betula lenta, L.—Black Birch.—May. Hochelaga woods.

Betula papyracea, Ait.—Canoe Birch.—May. Mountain. (Holmes).

Betula populifolia, Ait.—(Gray Birch.—Petite Cote. May. (Holmes).

Alnus incana, Willd.—Speckled Alder.—April. Mountain foot. Common. (Holmes' *A. serrulata*).

Alnus viridis, DC.—Green Alder.—Between mountains. May. (Holmes' *A. undulata*).

Salix humilis, Marshall.—Prairie Willow.—Hochelaga bank. May.

Salix discolor, Muhl.—Glaucous Willow.—North base of mountain.

Salix petiolaris, Smith.—Petoiled Willow.—Savanne, St. Michel. August.

Salix livida, Wahl., var. *occidentalis*, Gray.—Livid Willow.—All over the island. May.

Populus tremuloides, Michx.—American Aspen.—May. All over the island. (Holmes).

Populus balsamifera, L.—Balsam Poplar.—May. Common.

Populus monilifera, Ait.—Cottonwood.—Upper St. Famille street. May. (Holmes' *P. angulata*).

Populus monilifera, Ait., var. *Candicans*, Gray.—Balm of Gilead.—May. St. Famille street.

Populus alba, L.—White Poplar.—Cote St. Antoine and elsewhere. May.

Pinus strobus, L.—White Pine.—May. Savanno, St. Michel. (Holmes).

Pinus Banksiana, Lambert.—Scrub Pine.—Mountain. May.

Abies balsamea, Miller.—Balsam Fir.—Hochelaga woods. May. (Holmes' *pinus balsamea*).

Picea nigra, Link.—Black Spruce.—Petite Cote. May.

Picea alba, Link.—White Spruce.—St. Michel. May.

Tsuga Canadensis, Carr.—Hemlock.—Hochelaga woods. May.

Larix Americana, Michx.—Tamarack.—Petite Cote Swamp. May.

Thuja occidentalis, L.—Cedar.—May. In all swamps on island.

Juniperus communis, L.—Common Juniper.—Between mountains. August.

Taxus Canadensis, L., var. *Canadensis*, Gray.—Ground Hemlock.—Mountain. May. (Holmes).

Arisæma triphyllum, Torr.—Indian Turnip.—June. Mountain swamp. (Holmes' *Arum triphyllum*).

Calla palustris, L.—Marsh Calla.—Petite Cote Swamp. June.

Typha latifolia, L.—Common Cat Tail.—Pointe-aux-Trembles and elsewhere. July. (Holmes).

Typha angustifolia, L.—Narrow-leaved Cat Tail.—Pointe-aux-Trembles. June.

Sparganium simplex, Hudson, var. *Angustifolium*, Gray.—Bur Reed.—June. Back River.

Alisma plantago, L., var. *Americanum*, Gray.—Water Plantain.—July. Cote St. Paul. (Holmes).

Sagittaria variabilis, Engelm.—Arrowhead.—July. Common. (Holmes' *S. sagittifolia*).

Habenaria tridentata, Hook.—Rein Orchis.—Woods near cemetery gate. June.

Habenaria orbiculata, Torr.—Rein Orchis.—Between cemeteries. July.

Spiranthes Romanzoviana, Chamisso.—Ladies' Tresses.—Savanne, St. Michel. July.

Cypripedium pubescens, Willd.—Large Yellow Lady's Slipper.—West side of mountain. June. (Holmes).

Cypripedium acaule, Ait.—Stemless Lady's Slipper.—June. Hochelaga woods. (Holmes' *C. arietinum*).

Iris versicolor, L.—Larger Blue Flag.—June. Common.

Sisyrinchium anceps, Cav.—Blue eyed Grass.—June. Common. (Holmes).

Smilax herbacea, L.—Carrion Flower.—St. Laurent. June.

Trillium grandiflorum, Salisb.—Large White Trillium.—May. Very common. (Holmes).

Trillium erectum, L.—Purple Trillium.—Mountain, Hochelaga woods and elsewhere. (Holmes).

Trillium erythrocarpum, Michx.—Pointed Trillium.—May. Hochelaga woods. (Holmes).

Medeola Virginica, L.—Indian Cucumber Root.—June. Hochelaga woods. (Holmes).

Uvularia grandiflora, Smith.—Bellwort.—Papineau Road and mountain. May. (Holmes).

Uvularia sessilifolia, L.—Wood Daffodil.—May. North end of mountain. (Holmes).

Clintonia borealis, Raf.—Clintonia.—June. Mountain marsh and Hochelaga woods. (Holmes' *convallaria borealis*).

Streptopus roseus, Michx.—Twisted Stalk.—May. Moun-

tain and Hochelaga woods. (Holmes' *convallaria polygonatum*).

Smilacina racemosa, Desf.—False Spikenard. North end of mountain. August. (Holmes' *convallaria racemosa*).

Smilacina stellata, Desf.—False Solomon's Seal.—Lachine and elsewhere. (Holmes' *convallaria stellata*).

Smilacina bifolia, Ker., var. *Canadensis*, Gray.—False Solomon's Seal.—June. Mountain and Hochelaga woods. (Holmes' *convallaria bifolia*).

Polygonatum biflorum, Ell.—Smaller Solomon's Seal.—May. West side of mountain. (Holmes' *convallaria angustifolia*).

Erythronium Americanum, Smith. — Yellow Adder's Tongue.—May. Mountain and elsewhere. (Holmes' *E. dens-canis*).

Polypodium vulgare, L.—Polypody.—North end of mountain. June. (Holmes).

Adiantum pedatum, L.—Maidenhair.—June. Mountain. (Holmes).

Pteris aquilina, L. — Brake. — August. Common. (Holmes).

Asplenium filix femina, Bernh.—Spleenwort.—Mountain base.—June. (Holmes' *A. angustifolium*).

Aspidium thelypteris, Swartz.—Shield Fern.—Mountain base. (Holmes' *athyrium thelypteris*).

Aspidium Novboracense, Swartz.—Wood Fern.—Mountain foot. June.

Aspidium marginale, Swartz. — Shield Fern. — Mountain base. July. (Holmes).

Onoclea sensibilis, L.—Sensitive Fern.—August. Hochelaga woods. (Holmes).

Osmunda regalis, L. — Flowering Fern. — Hochelaga woods. (Holmes).

Osmunda Claytoniana, L.—Osmunda.—August.—Hochelaga woods. (Holmes' *O. interrupta*).

Osmunda Cinnamomea, L.—Cinnamon Fern.—August. Hochelaga woods. (Holmes).

Botrychium Virginicum, Swartz.—Moonwort.—July. North end of mountain. (Holmes' B. Gracile).

Equisetum limosum, L.—Horse Tail.—May. Hochelaga. (Holmes).

Equisetum arvense, L.—Common Horse Tail.—May. Everywhere. (Holmes).

Equisetum hyemale, L.—Scouring Rush.—June. North base of mountain.

Equisetum variegatum, Schleicher.—Horse Tail.—June. Cote St. Paul.

Equisetum scirpoides, Michx.—Horse Tail.—Mountain base. July.

Lycopodium dendroideum, Michx.—Ground Pine.—August. Hochelaga banks. (Holmes).

Lycopodium clavatum, L.—Club Moss.—August. Hochelaga woods. (Holmes).

Lycopodium lucidulum, Michx.—Club Moss.—Savanne, St. Michel. August. (Holmes).

st.
th
ga.
y.
th
e.
in
t.
e-
t.

