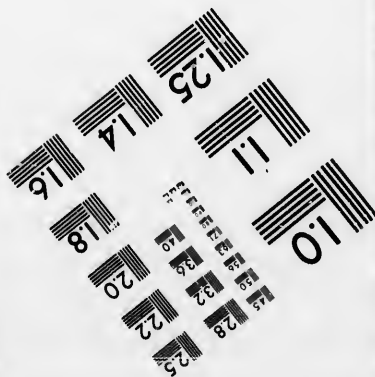
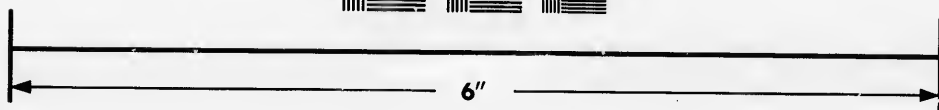
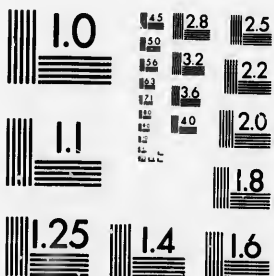


**IMAGE EVALUATION  
TEST TARGET (MT-3)**



**Photographic  
Sciences  
Corporation**

23 WEST MAIN STREET  
WEBSTER, N.Y. 14580  
(715) 872-4503

1.5 2.8  
1.6 3.2  
1.8 3.6  
2.0 4.0  
2.2 4.5  
2.5 5.0

**CIHM/ICMH  
Microfiche  
Series.**

**CIHM/ICMH  
Collection de  
microfiches.**



**Canadian Institute for Historical Microreproductions / Institut canadien de microreproductions historiques**

10

**© 1986**

Technical and Bibliographic Notes/Notes techniques et bibliographiques

The Institute has attempted to obtain the best original copy available for filming. Features of this copy which may be bibliographically unique, which may alter any of the images in the reproduction, or which may significantly change the usual method of filming, are checked below.

L'Institut a microfilmé le meilleur exemplaire qu'il lui a été possible de se procurer. Les détails de cet exemplaire qui sont peut-être uniques du point de vue bibliographique, qui peuvent modifier une image reproduite, ou qui peuvent exiger une modification dans la méthode normale de filmage sont indiqués ci-dessous.

- Coloured covers/  
Couverture de couleur
- Covers damaged/  
Couverture endommagée
- Covers restored and/or laminated/  
Couverture restaurée et/ou pelliculée
- Cover title missing/  
Le titre de couverture manque
- Coloured maps/  
Cartes géographiques en couleur
- Coloured ink (i.e. other than blue or black)/  
Encre de couleur (i.e. autre que bleue ou noire)
- Coloured plates and/or illustrations/  
Planches et/ou illustrations en couleur
- Bound with other material/  
Relié avec d'autres documents
- Tight binding may cause shadows or distortion  
along interior margin/  
Le reliure serrée peut causer de l'ombre ou de la  
distorsion le long de la marge intérieure
- Blank leaves added during restoration may  
appear within the text. Whenever possible, these  
have been omitted from filming/  
Il se peut que certaines pages blanches ajoutées  
lors d'une restauration apparaissent dans le texte,  
mais, lorsque cela était possible, ces pages n'ont  
pas été filmées.
- Additional comments:  
Commentaires supplémentaires:

- Coloured pages/  
Pages de couleur
- Pages damaged/  
Pages endommagées
- Pages restored and/or laminated/  
Pages restaurées et/ou pelliculées
- Pages discoloured, stained or foxed/  
Pages décolorées, tachetées ou piquées
- Pages detached/  
Pages détachées
- Showthrough/  
Transparence
- Quality of print varies/  
Qualité inégale de l'impression
- Includes supplementary material/  
Comprend du matériel supplémentaire
- Only edition available/  
Seule édition disponible
- Pages wholly or partially obscured by errata  
slips, tissues, etc., have been refilmed to  
ensure the best possible image/  
Les pages totalement ou partiellement  
obscurcies par un feuillet d'errata, une pelure,  
etc., ont été filmées à nouveau de façon à  
obtenir la meilleure image possible.

This item is filmed at the reduction ratio checked below/  
Ce document est filmé au taux de réduction indiqué ci-dessous.

10X	12X	14X	16X	18X	20X	22X	24X	26X	28X	30X	32X
					✓						

The copy filmed here has been reproduced thanks to the generosity of:

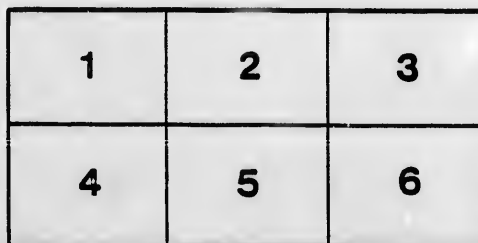
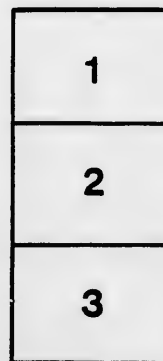
Archives of Ontario  
Toronto

The images appearing here are the best quality possible considering the condition and legibility of the original copy and in keeping with the filming contract specifications.

Original copies in printed paper covers are filmed beginning with the front cover and ending on the last page with a printed or illustrated impression, or the back cover when appropriate. All other original copies are filmed beginning on the first page with a printed or illustrated impression, and ending on the last page with a printed or illustrated impression.

The last recorded frame on each microfiche shall contain the symbol  $\rightarrow$  (meaning "CONTINUED"), or the symbol  $\nabla$  (meaning "END"), whichever applies.

Maps, plates, charts, etc., may be filmed at different reduction ratios. Those too large to be entirely included in one exposure are filmed beginning in the upper left hand corner, left to right and top to bottom, as many frames as required. The following diagrams illustrate the method:



L'exemplaire filmé fut reproduit grâce à la générosité de:

Archives of Ontario  
Toronto

Les images suivantes ont été reproduites avec le plus grand soin, compte tenu de la condition et de la netteté de l'exemplaire filmé, et en conformité avec les conditions du contrat de filmage.

Les exemplaires originaux dont la couverture en papier est imprimée sont filmés en commençant par le premier plat et en terminant soit par la dernière page qui comporte une empreinte d'impression ou d'illustration, soit par le second plat, selon le cas. Tous les autres exemplaires originaux sont filmés en commençant par la première page qui comporte une empreinte d'impression ou d'illustration et en terminant par la dernière page qui comporte une telle empreinte.

Un des symboles suivants apparaîtra sur la dernière image de chaque microfiche, selon le cas: le symbole  $\rightarrow$  signifie "A SUIVRE", le symbole  $\nabla$  signifie "FIN".

Les cartes, planches, tableaux, etc., peuvent être filmés à des taux de réduction différents. Lorsque le document est trop grand pour être reproduit en un seul cliché, il est filmé à partir de l'angle supérieur gauche, de gauche à droite, et de haut en bas, en prenant le nombre d'images nécessaire. Les diagrammes suivants illustrent la méthode.

tails  
du  
modifier  
une  
image

rata  
o  
elure,  
à

*1899*

# Voters List, 1899

## Township of Tuckersmith



### CLERK'S CERTIFICATE.

A. G. SMILLIE, Clerk of the Municipality of the Township of Tuckersmith, in the County of Huron, do hereby certify that parts One and Three of the within List constitute a correct List for the year 1899 of all persons appearing by the last revised Assessment Roll of the said Municipality to be entitled to vote at Elections for the members of the Legislative Assembly, and that parts One and Two constitute a correct list for said year, of all persons appearing by the said Roll to be entitled to vote at Municipal Elections, in the said Municipality.

And I hereby call on all Electors to examine the said list, and if any omissions or other errors are perceived therein to take immediate proceedings to have the said errors corrected according to law.

A. G. SMILLIE, Township Clerk, Tuckersmith.

### CERTIFICATE OF NO COMPLAINT.

A. G. SMILLIE, Clerk of the Municipality of the Township of Tuckersmith, having caused under his hand that no complaint respecting the List of Voters for said Municipality for the year 1899, had been received by him within Thirty Days after the first posting up of the same; and on application of the said Clerk, I,

J. B. C. JUDGE, Judge of the County Court of Huron, in pursuance of the provisions of "The Ontario Voters' List Act, 1889," and amendments thereto, certify that the within printed list of Voters being one of the copies revised by me from the said Clerk, under Section 17 of the said Act, is the Revised List of Voters for the said Municipality for the year 1899.

Witness my hand and seal, at Godorich, in the said County, this ..... day of ..... 1899.

### JUDGE'S CERTIFICATE.

J. B. C. JUDGE, Judge of the County Court of the County of Huron, pursuant to Section 17 of "The Ontario Voters' List Act, 1889," do hereby certify that the within is a correct copy of the List of Voters for the year 1899, as revised by me from the Clerk of the Municipality of the Township of Tuckersmith, according to my revision and correction thereof, pursuant to the provisions of the said Act.

Witness my hand and seal, at Godorich, in the said County, this ..... day of ..... 1899.

The Sheriff shall immediately, upon receipt of his copies, cause one of them to be posted up in a conspicuous place in the Court House; the Clerk of the Peace, upon receipt of his copies shall cause one of them to be posted up in a conspicuous place in his office; the School Board, Head Master or Mistress shall in like manner put up one of his copies in the School House; and every Postmaster shall post up one of his copies in his office.

J. B. C. JUDGE.

*Handwritten scribbles at the top of the page.*

189

To

- 1. SEAR
- 2. EGM

Compr

PART 1

No. on Roll.	Juror.
495	j A
776	A
874	j A
735	j E
755	E
744	E
879	j E
493	j E
799	E
351	E
739	j E
894	E
329	j E
890	E
819	E
805	j E
822	E
878	C
488	j C
490	j C
862	C
868	C
772	j C
762	j C
448	C
809	j C

1899

## VOTER'S LIST



MUNICIPALITY OF THE  
TOWNSHIP OF TUCKERSMITH.

Schedule of Post Offices :

1. SEAFORTH | 3. CLINTON | 5. KIPPEN | 7. HENSALL  
2. EGMONDVILLE | 4. BRUCEFIELD | 6. CHISELHURST

POLLING SUB-DIVISION NO. 1.

Comprising Lots 1 to 14 inclusive, in the First, Second and Third Concessions,  
Huron Road Survey.

PART 1.—List of Persons entitled to vote at both Municipal Elections and  
Elections to the Legislative Assembly.

No. on Roll.	Juror.	NAME.	No. of Lot or Part of Lot.	Concession or Street.	O. T., L. H. S. or F. S.	P. O.	Occupation.
495	j	Aberhardt, William	13	3, H. R. S.	o m f	2	Farmer
776		Allen John C.	3	Front street	t m f	2	Laborer
874	j	Archibaid, William	15	Armitage Survey	f m f	2	Rt farmer
735	j	Bubolz, Hermon	Part 10	3, H. R. S.	o m f	2	Farmer
755		Burgard, Ferdinand	6, Stanley st., S. 7 & 8	Egmondville	o m f	2	Potter
744		Bristow, Robert H.	V. L. 2 and 3	East London street	o m f	2	Farmer
879	j	Brunner, John	V. L. 25	North street	o m f	2	Cooper
493	j	Beck, Jonathan	Part 9	3, H. R. S.	o m f	2	Gardener
799		Baile, George	V. L. 16	Centre street east	o m t	2	Rt farmer
351		Brown, Joseph	Pt. 15 and 14, G. S.	1, H. R. S.	o m f	1	Farmer
739	j	Boland, James	8 and 9	East London street	o m f	2	Cooper
894		Brown, James	39 and 40	North street	o m f	1	Packer
329	j	Barry, Richard	East half .5	1, H. R. S.	o m f	1	Farmer
890		Bolduc, Hermon	5 and 6	North street	t m f	2	Finisher
819		Bickel, William	12	West Centre street	f m f	2	Rt farmer
805	j	Brown, George W.	20	East Centre street	f m f	2	Laborer
822		Brown, Neil	14 and 15	West Centre street	o m f	2	Rt farmer
878		Callighan, Walter	32	N. st., Egmondville	f m f	1	Laborer
488	j	Clary, Peter	5	3, H. R. S.	o m f	2	Farmer
490	j	Clary, Bryan	6	3, H. R. S.	o m f	2	Farmer
862		Clark, W. C.	Part 11	2, H. R. S.	o m f	1	Laborer
868		Clark, Daniel	11	Victoria street	o m f	2	Painter
772	j	Charlesworth, Alex.	V. L. 4	Bayfield street	o m f	1	Farmer
762	j	Colbert, Henry	10, & other premises	3, H. R. S.	o m f	2	Brewer
448		Cresswell, G. Edwin	14	2 and 3	o m f	2	Farmer
809	j	Chesney, Hugh M.	2	West Centre street	o m f	2	Drover

No. on  
Roll  
Juror.

808  
449  
763  
871  
849  
764  
804  
888

766  
765  
334  
333  
330  
319  
433  
796  
774  
742  
434  
435  
494  
320  
340

833  
773

431  
327  
326  
428  
827  
835  
855  
430  
432  
484  
328

343  
438  
381  
853  
439





No. on Roll.	Jurat.	NAME.	No. of Lot or Part of Lot.	Concession or Street.	O.T. L.H.S. or F.S.	P.O.	Occupation.
808	j	Cumming, James	1	West Centre street	o m f		2 Agent
449		Cresswell, Henry W.	14	2, H. R. S.	f m f		1 Farmer
763		Colbert, Thomas	10	3, H. R. S.	f m f		2 Brewer
871		Campbell, Duncan	14	Armitage Survey	f m f		2 Laborer
849		Casey, Thomas	1 and 2	Water street	f m f		2 Laborer
764	j	Colbert, Henry R.	Part 10	3, H. R. S.	f m f		2 Brewer
804		Carty, Thomas	19	East Centre street	t m f		2 Laborer
888		Cooper, William A.	16	Egm., North street	t m f		2 Laborer
766	j	Daly, J. F.	1, and other prem.	East Bayfield street	f m f		2 Jeweller
765		Daly, Thomas	1, and other prem.	East Bayfield street	f m f		2 Grocer
394		Devereaux, James	7	1, H. R. S.	f m f		1 Farmer
333		Devereaux, John, sr.	7	1, H. R. S.	o m f		1 Farmer
330	j	Dorsey, Michael	West half 5	1, H. R. S.	o m f		1 Farmer
319		Devereaux, Robert	East half 1	1, H. R. S.	o m f		1 Farmer
433		Devereaux, Thomas	4 and 7	3 and 2, H. R. S.	o m f		2 Farmer
796		Dyson, Joseph	V. L. 14	East Centre street	o m f		2 Rt farmer
774		Doble, John, sr.	V. L. 1	2, H. R. S.	o m f		2 Rt farmer
742		Daly, John	4	East London street	f m f		2 Cooper
434		Devereaux, Wm. J.	4	2, H. R. S.	f m f		2 Farmer
435		Devereaux, James	4	2, H. R. S.	f m f		2 Farmer
494		Dennie, John	12	3, H. R. S.	t m f		2 Farmer
320		Devereaux, John L.	East half 1	1, H. R. S.	f m f		1 Farmer
340	j	Dodds, John	Part 14	1, H. R. S.	f m f		1 Manu'ft
833		Elliott, William	1 and 2	Armitage Survey	o m f		1 T. clerk
773		Ellison, Robert L.	1 Mill street	Egmondville	t m f		2 Laborer
431	j	Fortune, Robt. M. jr.	3	2, H. R. S.	f m f		1 Farmer
327		Fortune, Luke	4	1, H. R. S.	o m f		1 Farmer
326		Fortune, William	3	1, H. R. S.	o m f		1 Farmer
428	j	Fortune, Robert	3	2, H. R. S.	o m f		2 Farmer
827		Forsythe, James	V. L. 7	Armitage Survey	o m f		2 Rt farmer
835		Finlayson, William	Park lot	Pt. 3, Egmondville	o m f		2 Rt farmer
855		Fleurchetiz, Lewis	1, 2 and 3	Church street	o m f		2 Miller
430		Fortune, James J.	3	2, H. R. S.	o m f		1 Farmer
432		Fortune, W. L.	3	2, H. R. S.	f m f		1 Farmer
484		Fortune, John	3	3, H. R. S.	f m f		2 Farmer
328	j	Fortune, Albert	4	1, H. R. S.	f m f		1 Farmer
343	i	Garden, George F. S.	15 and 16	Fowler Sur., Con.	1 f m f		1 Carpenter
438		Gemmill, Thomas	7	2, H. R. S.	o m f		2 Farmer
381		Gorden, Laughlin	Part 14	1, H. R. S.	f m f		1 Laborer
853		Grisbrook, Henry	3	Water street	f m f		2 Laborer
439	j	Gemmill, John	7	2	f m f		2 Farmer

No. on Roll.	Jurat.
324	j
323	j
322	j
886	H
817	j
810	H
788	H
856	H
857	H
830	H
811	j
780	j
777	J
778	J
779	J
783	J
784	J
90	K
526	K
480	K
481	j
342	j
878	K
838	I
348	I
867	M
445	M
444	j
873	M
824	M
794	M
895	j
446	M
487	j
533	M
491	M

POLLING SUB-DIVISION NO. 1

No. on Roll.	Juror.	NAME.	No. of Lot or Part of Lot.	Concession or Street.	O. F. L. H. S. or F. S.	P. O.	Occupation.
324	j	Heffernan, Thomas	2	1, H. R. S.	f m f	1	Farmer
323	j	Heffernan, Lawrence	2	1, H. R. S.	f m f	1	Farmer
322	j	Heffernan, Michael	2	1, H. R. S.	o m f	1	Farmer
886	j	Hudson, George	V. L. 14	North street	o m f	1	Laborer
817	j	Hicks, Richard	V. L. 9	West Centre street	o m f	2	Rt. teach.
810	j	Hill, Thomas	V. L. 4, 5, 6, & other prem.	Centre street	o m f	2	Blacks'th
788	j	Hill, Neil	6 and 7	East Centre street	o m f	2	Farmer
856	j	Hawthorne, Robert	6, 7 and 8	Church street	o m f	2	Laborer
857	j	Holland, John	Part 11	2 Con. H. R. S.	o m f	2	Cooper
830	j	Henry, W. R.	10 and 19	Armitage sur., Eg.	f m f	2	Laborer
811	j	Hill, William	3 West Centre st.	Egmondville	f m f	2	Book-keep.
780	j	Jackson, Henry, jr.	V. L. 4	Front street	t m f	2	Tanner
777	j	Jackson, George, sr.	V. L. 4, and other prem.	East Centre street	o m f	2	Merchant
778	j	Jackson, Geo. A., jr.	4	Front street	t m f	2	Clerk
779	j	Jackson, Robert E.	4	Front street	t m f	2	Traveller
783	j	Jackson, Henry, sr.	V. L. 5, and other prem.	East Centre street	f m f	2	Traveller
784	j	Jackson, L. C.	5	East Centre street	f m f	2	Merchant
770	j	Kruse, Clause	V. L. 4, 5	South Stanley st.	o m f	2	Cooper
526	j	Kennedy, H. P.	6	Armitage Survey	o m f	1	Gent'man
480	j	Kehoe, James	1	3	o m f	2	Farmer
481	j	Kehoe, William	1	3	f m f	2	Farmer
342	j	Knetchel, James	Part 13	1, H. R. S.	f m f	1	Laborer
876	j	Kemp, William	25, 28	Armitage Survey	o m f	2	Stonecutter
838	j	Lowrie, James	Park lot 3	Egmondville	o m f	1	Grain buyer
348	j	Lamb, John	V. L. 13	Fowler Survey	o m f	1	Painter
867	j	Muldrew, Robert	16	West Water street	o m f	2	Student
445	j	Modeland, John	12	2, H. R. S.	o m f	2	Farmer
444	j	Modeland, Richard	12	2, H. R. S.	f m f	2	Farmer
873	j	Martin, Henry, sr.	36; 37	North street	o m f	1	
824	j	Moore, David	V. L. 8	Armitage Survey	o m f	2	Carpenter
794	j	Manson, David	12	East Centre street	o m f	2	Rt farmer
895	j	Murray, James	38	Eg., North street	f m f	2	Mason
446	j	McNay, William	13	2, H. R. S.	t m f	2	Farmer
487	j	McQuaid, Michael	4	3, H. R. S.	f m f	1	Farmer
533	j	McCaa, John	Part 27, and other prem.	5, L. R. S.	f m f	2	Farmer
491	j	McGeoch, Samuel	8, and other prem.	3, H. R. S.	f m f	2	Teamster

No. of  
Roll  
Jaror.

486 j  
447 j  
437 j  
869 j  
877 j  
840 j  
792 j  
797 j  
840 j  
325 j  
872 j  
816 j  
892 j  
335 j  
793 j  
759 j

428 j  
883 j

436 j

885  
880  
800  
746  
743  
825

851 j  
861 j

354 j  
828 j

POLLING SUB-DIVISION NO. 1

No. on Roll	Juror.	NAME.	No. of Lot or Part of Lot.	Concession or Street.	O. S. L. H. S. or F. S.	P. O.	Occupation.
486	j	McQuade, James	4	3, H. R. S.	o m f	1	Farmer
447	j	McNay, John	13	2, H. R. S.	f m f	2	Farmer
437	j	McGeoch, William	6	2, H. R. S.	o m f	2	Farmer
869	j	McKinley, John	{ V. L. 11, 12, 13, 16 { 17, 18 Armitage Survey } Armitage Survey }		o m f	1	Rt farmer
877	j	McKay, Alex.	33, 34, 35	North Street	o m f	1	Cooper
840	j	McMann, John, sr.	Part park lot	4, and other prem.	o m f	1	Horsedealer
792	j	McDougall, William	V. L. 10	East Centre street	o m f	1	Laborer
797	j	McCaa, Alex.	V. L. 15 and 29	East Centre street	f m f	2	Rt farmer
840	j	McMurray, Ebenezer	Park lot 3	West Centre street	t m f	2	Grain buyer
325	j	McGrath, Patrick	3	1, H. R. S.	t m f	1	Farmer
872	j	McKay, Donald	Part of park lot	5, Egmondville	f m f	2	Laborer
816	j	McGee, Jacob	V. L. 7 and 8	West Centre street	o m f	1	Rt farmer
892	j	McLennan, Alex.	26 to 32	North street	f m f	1	Cooper
335	j	McMann; John F.	8	1, H. R. S.	f m f	1	Farmer
793	j	McDougall, Wm. jr.	10	East Centre street	f m f	2	Miller
759	j	McDonald, John	10	North Stanley st.	f m f	2	Laborer
428	j	Nigh, William	West half 2	2, H. R. S.	o m f	2	Farmer
883	j	Noble, Joseph	V. L. 20, 21 and 22	North street	o m f	1	Laborer
436	j	Oldfield, John	5	2, H. R. S.	o m f	2	Farmer
885	j	Powell, John	15	North street	f m f	1	Laborer
880	j	Powell, Robert, sr.	V. L. 23 and 24	North street	o m f	1	Laborer
800	j	Puroell, James, sr.	17 and 18	Centre street east	o m f	2	Saddler
746	j	Petrie, Charles	Part 10	3, H. R. S.	f m f	2	Laborer
743	j	Prendergast, John	4	East London street	t m f	2	Laborer
825	j	Pease, Elishu	5	Armitage Survey	f m f	2	Traveller
851	j	Quinlan, Humphrey	1 and 2	Water street	oc. m f	2	Laborer
861	j	Quinlan, James	Part 11	2, H. R. S.	o m f	2	Laborer
354	j	Robb, James	Part 14	1, H. R. S.	o m f	1	Packer
828	j	Reinkie, Louis	9 and 10	Armitage Survey	o m f	1	Miller

Roll.  
Juror.

757  
741  
823  
858  
820  
344  
345  
370  
860  
346  
771  
832  
891  
331  
814

760  
380

791  
844  
845  
843  
769  
854

747  
758  
748  
749  
737

770

POLLING SUB-DIVISION NO. 1

Roll.	Juror.	NAME.	No. of Lot or Part of Lot.	Concession or Street.	O. T. L. H. S. or F. S.	P. O.	Occupation.
757		Sutherland, Charles	V. L. 9	Stanley street east	o m f	2	Weaver
741		Smith, Jacob	V. L. 4 Part 11	West London street 2, H. R. S.	o m f	2	Tanner
823	j	Sproat, Joseph	V. L. 16	West Centre street	o m f	2	
858	j	Stoddard, James	V. L. 9	Front street	o m f	2	Laborer
820		Steet, John	V. L. 14	West Centre street	o m f	2	Shoem'kr
344	j	Scott, Robert	Part 13	1, H. R. S.	f m f	1	Farmer
345		Scott, Francis	Part 13	1, H. R. S.	o m f	1	Farmer
370		Scott, Robert B.	V. L. b'k x, & other prem.	Chalk's Survey	o m f	1	Agent
860		Smith, William	11	Front street	o m f	2	Retired
346		Scott, Andrew	Part 13	1, H. R. S.	f m f	1	Teacher
771		Smale, W. G.	2, East Bayfield st.	Egmondville	t m f	2	Laborer
832		Shaw, Rev. Neil	3	Armitage Survey	In. m f	1	Clergyman
891		Snowden, Newton	V. L. 7	North street	f m f	1	Cooper
331	j	Stewart, George	6	1, H. R. S.	t m f	1	Farmer
814	j	Stephenson, Daniel	13	West Centre street	t m f	2	Wagonm'kr
760		Thom, Christopher	V. L. 8	North Stanley st.	n m f	2	Mason
380		Torrence, Robert	V. L. 16, 17, 20, 23	Lewis & Galt's Sur.	o m f	1	Laborer
791	j	VanEgmond, A. C.	9	Centre street east	f m f	2	Carder
844		VanEgmond, A. G.	Part 10	2, H. R. S.	o m f	1	Manu'ft
845	j	VanEgmond, L. G.	Part 10	2, H. R. S.	o m f	1	Manu'ft
843	j	VanEgmond, W. D.	E. P. lot & other prem.	Egmondville	o m f	1	Manu'ft
789		VanEgmond, Leopold	Part 10	2, H. R. S.	o m f	2	Rt farmer
854	j	VanEgmond, L. E.	Part 10 and 11 Part 9, 10, 11	2, H. R. S. 3, H. R. S.	o m f	2	Mechanic
747	j	Weiland, Henry	3	Front street	f m f	2	Cooper
758		Westphall, Frederick	V. L. 11	South Stanley st.	o m f	2	Laborer
748	j	Weber, Joseph	V. L. 2, 3, & other prem.	North street	o m f	2	Potter
749		Weber, Jacob	2 and 3	North Stanley st.,	o m f	2	Potter
737		Wraith, William	Part 11	Concession 3, Eg.	t m f	2	Laborer
770	j	Young, James	4	Front street	f m f	2	Tanner

PAR

NO. OF  
Roll  
Juror.

795

496  
750  
360

806  
357  
497  
332  
760  
736  
839  
859  
863

321  
807  
787

499  
836  
884

440  
441  
837

443  
829  
360  
848  
361



POLLING SUB-DIVISION NO. 1

PART 2.—List of Persons Entitled to Vote at Municipal Elections Only.

Roll Juror.	NAME.	No. of Lot or Part of Lot.	Concession or Street.	O. L. H. S. or E. S.	P. O.	Occupation.
795	Allen, Margaret	13	East Centre street	Owner	2	Widow
496	Burgess, Mrs. J.	Part 12	3, H. R. S.	Owner	2	Widow
750	Boehler, Mrs. M.	3	South Stanley st.	Owner	2	Widow
360	Brewer, George	Part 14	Con. 1 H. R. S.	Owner	1	Laborer
806	Chesney, Mrs. W.	Part 10	2, H. R. S.	Owner	2	Widow
357	Cass, T. R. F.	Part 14	1, H. R. S.	Owner	1	Pork packer
497	Cresswell, Mrs. W. N.	Part 14	3, H. R. S.	Owner	1	Widow
332	Case, Mrs. M. A.	6	1, H. R. S.	Owner	1	
760	Crawford, George	1	Mill street	Owner	1	
736	Cumming, Agnes	Part 11	3, H. R. S.	Owner	2	Spinster
839	Carnochan, Mrs. S.	Part park lot 3	Egmondville	Owner	1	Widow
859	Copp, William	Part 11	2	Owner	1	Mason
863	Collie, Margaret	Part 11	2, H. R. S.	Owner	2	Widow
321	Dickson, John	15, & other premises	2, H. R. S.	Owner	2	Farmer
807	Devereaux, Mrs. E.	West half 1 <sup>st</sup>	1, H. R. S.	Owner	1	Widow
787	Dickson, Samuel	Part 10	2, H. R. S.	Owner	1	P. M.
	Dallas, Janet	2	Front street	Owner	2	Spinster
499	Fanson, Robert	12	3, H. R. S.	Owner	2	Rt farmer
836	Ferguson, Elizabeth	Part park lot 3	Egmondville	Owner	1	Widow
884	Folland, John	17, 18, 19	Egm., North street	Owner	2	Laborer
440	Gemmill, Miss Sarah	8	2, H. R. S.	Owner	2	Spinster
441	Gemmill, Miss E.	8	2, H. R. S.	Owner	2	Spinster
837	Graham, Mrs. W.	Part park lot 3	Egmondville	F	1	Widow
443	Hadden, Elizabeth	Part 9	2, H. R. S.	Owner	1	
829	Henry, Mrs. Margaret	10, 19	Armitage Survey	Owner	2	Widow
360	Harvey, Elizabeth	8, 9, 10, 11	Lewis & Galt's Sur.	Owner	1	Spinster
848	Houston, Maria	1 and 2	West Water street	Owner	2	Spinster
361	Harvey, Agnes	8, 9, 10 and 11	Lewis & Galt's Sur.	Owner	1	Spinster



POLLING SUB-DIVISION NO. 1

7

Roll.	Juror.	NAME.	No. of Lot or Part of Lot.	Concession or Street.	O. T. L. or F. S.	P. O.	Occupation.
59		Johnston, Margaret	Part 14	1, H. R. S.	Owner	1	Widow
341		Knechtel, Margaret	Part 13	1, H. R. S.	Owner	1	Widow
648		Landsborough, John	5, and other prem.	Armitage Survey	Owner	1	Merchant
347		Little, Janet	V. L. 14	Fowler Sur., Con. 1	Owner	1	Spinster
887		McLeod, William	A. 16	N. st., Egmondville	Owner		Carver
831		Mason, Jessie	22	Bayfield street	Owner	2	Widow
892		McLennan, Ellen	26 to 32	North street	Owner	1	Widow
803		McCann, Mrs. C.	19	East Centre street	Owner	2	Widow
889		McCosh, Mrs. C.	5 and 6	North street	Owner	1	Widow
485		McQuade, Ann	4	3, H. R. S.	Owner	2	Widow
818		Porter, Margaret	10, 11	West Centre street	Owner	2	Widow
352		Robison, Jane	Part 14	1, H. R. S.	Owner	1	Spinster
353		Robison, Margaret	Part 14	1, H. R. S.	Owner	1	Spinster
775		Stewart, Christena	1	East Centre street	Owner	2	Widow
864		Simpson, Mrs. Jane	Part of park lot	7	Owner	2	Widow
738		VanEgmond, Jessie	Part 11	3, H. R. S.	Owner	2	Widow
338		Wilson, D. D.	Part 9	3, H. R. S.	Owner	1	Merchant
337		Wilson, Charles	Part 9	1, H. R. S.	Owner	1	Grocer
483		Winter, Robert	2	3, H. R. S.	Owner	1	Drover
769		Young, Elizabeth	9, 10, 11	East Bayfield street	Owner	2	Widow



POLLING SUB-DIVISION NO. 1

ART 3.—List of persons entitled to vote at elections to the Legislative Assembly.

Roll.	Juror.	NAME.	No. of Lot or Part of Lot.	Concession or Street.	O. S. L. H. S. or E. S.	P. O.	Occupation.
822		Brown, Angus	14 and 15	West Centre street	m f	2	Laborer
745		Bristow, James	2 and 3	East London street	m f	2	Mason
442		Broadfoot, Robert	8	2, H. R. S.	m f	2	Laborer
847		Baker, Walter	8	Armitage Survey	m f	1	Teacher
482		Biggan, Frank	1	3, H. R. S.	m f	1	Laborer
756		Burgard, Philip	6, 7 and 8	South Stanley st.	m f	2	Laborer
842		Coats, J. J.	Part lot 3 and 4	Egmondville	m f	1	Laborer
846		Delacy, L. T.	Part 10	2, H. R. S.	m f	1	Book-keep.
834		Elliott, Hector	1 and 2	Armitage Survey	m f	1	Teacher
896		Gaw, Robert	38	North street	m f	2	Retired
812		Hill, James	3	West Centre street	m f	2	Laborer
789		Hill, R. N.	6 and 7	Centre street east	m f	2	Teacher
786		Jackson, Tudor	5	East Centre street	m f	2	Jeweller
781		Jackson, John A.	4	East Centre street	m f	2	Student
492		Jamieson, Joseph	8	3, H. R. S.	m f	2	Laborer
489		Jordan, Thomas	5	3, H. R. S.	m f	2	Laborer
785		Jackson, Samuel T.	5	East Centre street	m f	2	Artist
782		Jackson, Thomas F.	4	East Centre street	m f	2	Tanner
753		Kruse, Charles	4 and 5	South Stanley st.	m f	2	Mason
752		Kruse, Richard	4 and 5	South Stanley st.	m f	2	Mason
754		Kruse, Louis	4 and 5	South Stanley st.	m f	2	Engineer
798		McCaa, William	15	East Centre street	m f	2	Rt farmer
870		McKinley, James	11	2, H. R. S.	m f	2	Teacher
815		McClymont, James	3	West Centre street	m f	2	Laborer



POLLING SUB-DIVISION NO. 1

No. on Roll.	Juror.	NAME.	No. of Lot or Part of Lot.	Concession or Street.	O. T. L. H. S. or F. S.	P. O.	Occupation.
802		Purcell, J. J.	17 and 18	East Centre street	m f	2	Clerk
881		Powell, Robert, jr.	23 and 24	North street	m f	2	Laborer
882		Powell, Charles	23 and 24	North street	m f	2	Laborer
801		Purcell, Henry	17 and 18	East Centre street	m f	2	Tinsmith
852		Quinlan, Daniel	1 and 2	Church street	m f	2	Laborer
355		Shade, Lucas	Harpurhey, part 14	Con. 1 H. R. S.	m f	1	Laborer
821		Steet, John, jr.	14	West Centre street	m f	1	Clerk
356		Shade, William R.	Part 14	1, H. R. S.	m f	1	Laborer
865		Simpson, Crawford	Part park lot 7	Egmondville	m f	2	Laborer
866		Simpson, John	Part park lot 7	Egmondville	m f	2	Laborer
336		Tiernan, W. H.	Part 8	1, H. R. S.	m f	1	Printer
498		Thompson, Phelix	Part 14	3, H. R. S.	m f	1	Rt farmer
813		Wright, James	4	West Centre street	m f	2	Black's th

POLLING SUB-DIVISION NO. 2

Comprising that part of the Township west of the line between Lots 14 and 15, H. R. S., and north of Mill Road.

256	j	Armstrong, John	34	3, L. R. S.	o m f	4	Farmer
542	j	Allan, James	23	4, H. R. S.	f m f	4	Farmer
200	j	Ball, John E.	44	2, L. R. S.	o m f	3	Farmer
293	j	Broadfoot, Samuel	E. half 32, & other prem.	4, L. R. S.	o m f	1	Farmer
514	j	Broadfoot, W. G.	26	3, H. R. S.	o m f	1	Farmer
387	j	Brine, J. P.	P. 5	1, H. R. S.	o m f	1	Auc'neer
253	j	Broadfoot, William	32, & other premises	3, L. R. S.	f m f	4	Farmer
504	j	Black, G. S.	18, 19	3, H. R. S.	f m f	1	Farmer
508	j	Black, William	18 and 19	3, H. R. S.	f m f	1	Farmer
254	j	Broadfoot, Alex.	32, and other prem.	3, L. R. S.	f m f	4	Farmer
541	j	Broadfoot, Alex.	21 and 22	4, H. R. S.	f m f	1	Farmer
294	j	Broadfoot, A. G.	East half 32	4, L. R. S.	f m f	4	Farmer

10

=

8

8

No.

8

2

3

4

3

1

2

3

5

5

5

4

5

4

4

1

4

3

4

2

4

1

1

1

3

3

3

1

8

3

3

3

1

1

2

2

1

3

8

8

7



## POLLING SUB-DIVISION NO. 2

No. on Roll.	Jurat.	NAME.	No. of Lot or Part of Lot.	Concession or Street.	O.T. L.H.S. or E.S.	P.O.	Occupation.
897		Crish, Everett	25	4, H. R. S.	f m f	3	Farmer
258		Carter, Henry	North half 36	3, L. R. S.	f m f	3	Farmer
374		Currie, John	Part 15	1, H. R. S.	f m f	1	Laborer
471		Crish, Francis W.	32 and west half 34	2, H. R. S.	o m f	3	Farmer
315		Charters, William	32	6, L. R. S.	f m f	2	Farmer
193		Cudmore, Harry	N. $\frac{1}{4}$ 40 & N. E. $\frac{1}{4}$ 39	2, L. R. S.	o m f	3	Farmer
202		Crish, George	34	2, H. R. S.	o m f	3	Farmer
313		Charters, Robert	31 and 32	6 and 7, L. R. S.	o m f	2	Farmer
545		Crish, Herbert	25	3 and 4, H. R. S.	o m f	1	Farmer
518		Crish, Whitfield	31	3, H. R. S.	o m f	3	Farmer
507		Carnochan, James	20	3, H. R. S.	o m f	1	Farmer
456		Carnochan, Samuel	20	2, H. R. S.	o m f	1	Farmer
500		Campbell, John	16	3, H. R. S.	o m f	1	Farmer
470		Crish, John	31	2, H. R. S.	o m f	3	Farmer
402		Crish, Louis	North half 32	1, H. R. S.	o m f	3	Farmer
468		Crish, James	30	2, H. R. S.	o m f	3	Farmer
191		Crish, Iddo	South half 39	2, H. R. S.	f m f	3	Farmer
405		Crish, John T.	Part 31 and 32	1, H. R. S.	f m f	3	Farmer
314		Charters, Henry	32	6, L. R. S.	f m f	2	Farmer
457		Carnochan, Robert	22	3, H. R. S.	f m f	1	Farmer
201		Crish, Joseph G.	45	2, L. R. S.	f m f	3	Farmer
469		Crish, Gifford	30	2, H. R. S.	f m f	3	Farmer
183		Caldwell, Moses	34	2, L. R. S.	o m f	4	Farmer
184		Caldwell, Richard	34	2, L. R. S.	o m f	4	Farmer
185		Caldwell, Thomas	34	2, L. R. S.	o m f	4	Farmer
366		Dynes, William	Part 15	1, H. R. S.	o m f	1	Rt farmer
393		Dale, William	24	1, H. R. S.	o m f	1	Farmer
394		Dale, George, jr.	24	2, H. R. S.	f m f	1	Farmer
104		Davidson, Andrew	35	1, L. R. S.	o m f	4	Farmer
93		Diehl, Valetine	47, 48, 50	McDonald's Survey	o m f	4	Rt farmer
397		Dale, George, sr.	26	1, H. R. S.	f m f	1	Farmer
398		Dale, John, jr.	27	1, H. R. S.	f m f	1	Farmer
187		Elcoat, William	36	2, L. R. S.	o m f	4	Farmer
257		Elcoat, Appleton	35	3, H. R. S.	o m f	4	Farmer
386		Fowler, Thomas	19	1, H. R. S.	o m f	1	Farmer
384		Fowler, Joseph	17 and 18	1, H. R. S.	o m f	1	Farmer
377		Fowler, William	Wor. Survey 24, 28	1, H. R. S.	o m f	1	Farmer
31		Grieve, Hugh	17	3, H. R. S.	f m f	1	Farmer
3		Gray, Alexander	37	2, L. R. S.	o m f	4	Farmer
30		Grummett, Daniel	V.L. 2, and other prem.	Cash Survey	o m f	1	Laborer
3		Grieve, James L.	17	3, H. R. S.	f m f	1	Farmer

No. on

3

5

3

3

1

4

3

3

1

2

3

4

1

4

5

5

5

2

5

4

4

5

5

5

7

2

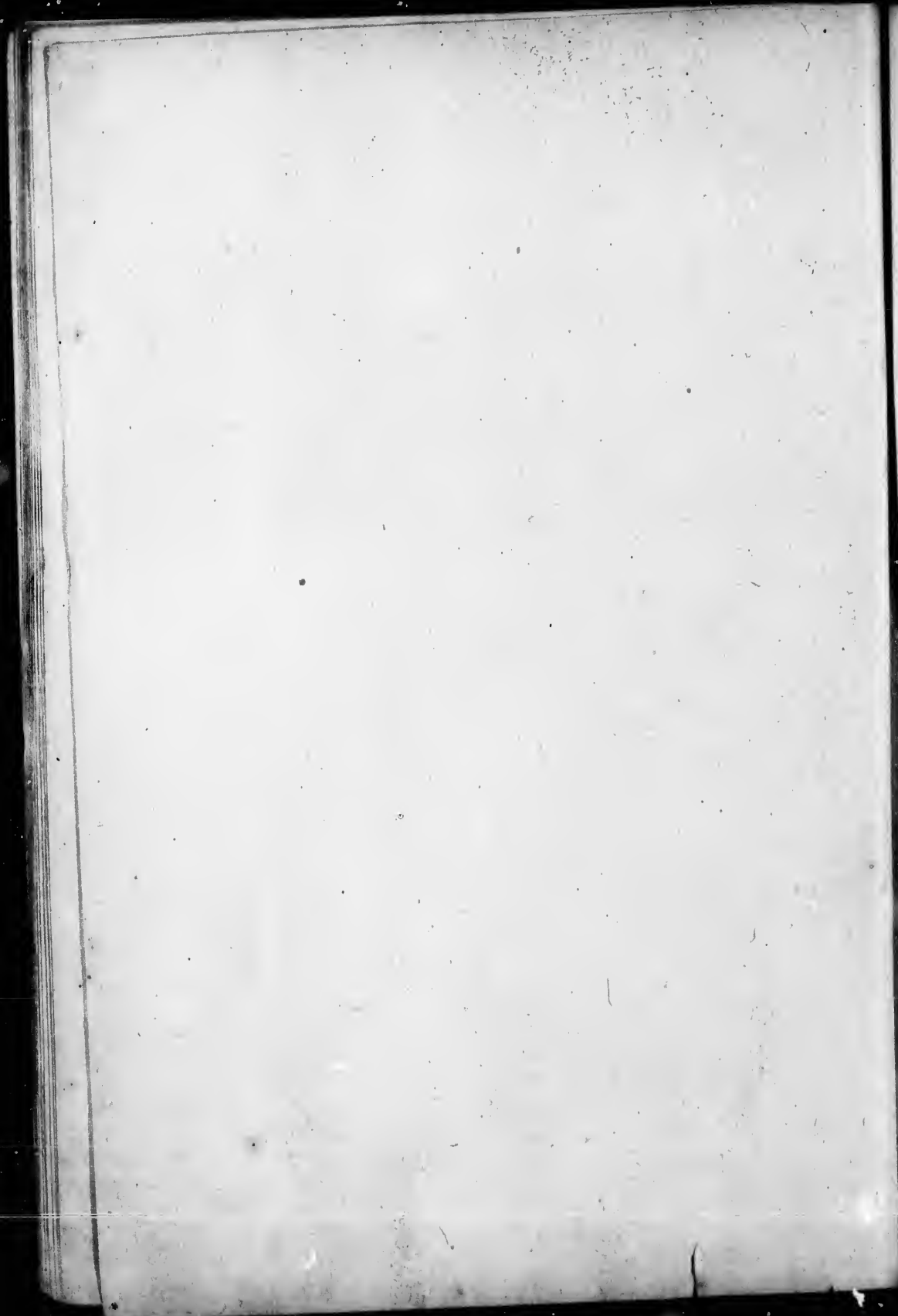
5

POLLING SUB-DIVISION NO. 2

No. on Roll.	Juror.	NAME.	No. of Lot or Part of Lot.	Concession or Street.	O. T. S.		P. O.	Occupation.
					L. H. S.	or F. S.		
382	j	Grieve, James	Part 15, and other prem.	1, H. R. S.	f m f		1	Farmer
503	j	Grieve, Joseph	17	3, H. R. S.	t m f		1	Farmer
389	j	Henderson, John B	21	1, H. R. S.	o m f		1	Farmer
392	j	Hugill, Abraham	23	1, H. R. S.	o m f		1	Farmer
114	j	Hunter, John	44	1, L. R. S.	t m f		3	Farmer
452	j	Hannah, John, sr.	16	2, H. R. S.	Oc. m f		1	Farmer
364	j	Holmsted, Francis	Part 15, and other prem.	1, H. R. S.	o m f		1	Barrister
382	j	Habkirk, William	Part 16	1, H. R. S.	t m f		1	Farmer
129	j	Haywood, Alfred	Part 51	1, L. R. S.	f m f		3	Laborer
203	j	Homes, Joseph	26	2, L. R. S.	f m f		3	Laborer
399	j	Jamieson, Alexander	28	1, H. R. S.	o m f		1	Farmer
476	j	Johns, Ira	28, and other prem.	3, H. R. S.	f m f		3	Farmer
199	j	Johns, Sidney	43	2, L. R. S.	o m f		3	Farmer
477	j	Johns, Harvey	35	2, H. R. S.	f m f		3	Farmer
509	j	Landsborough, James	23	3, H. R. S.	o m f		1	Farmer
515	j	Landsborough, W. O.	27	3, H. R. S.	o m f		3	Farmer
511	j	Landsborough, Wm.	23	3, H. R. S.	f m f		1	Farmer
255	j	Lane, Thomas, sr.	33	3, L. R. S.	f m f		4	Farmer
255	j	Lane, Thomas, jr.	33	3, L. R. S.	t m f		4	Farmer
473	j	Layton, George W.	33, and other prem.	2, H. R. S.	t m f		3	Farmer
474	j	Layton, Charles	33, and other prem.	2, H. R. S.	t m f		3	Farmer
510	j	Landsborough, David	23	3, H. R. S.	f m f		3	Student
58	j	Martin, John	21	2, H. R. S.	f m f		1	Farmer
59	j	Martin, Wm.	21	2, H. R. S.	f m f		1	Farmer
39	j	Mason, Chas.	32	2, L. R. S.	o m f		4	Farmer
22	j	Moore, Thomas	49, South half	1, L. R. S.	o m f		3	Farmer
50	j	Mason, Arthur	32	2, L. R. S.	o m f		4	Farmer
	j	McLaughlin, Michael	20	1, H. R. S.	t m f		1	Farmer
	j	McLaughlin, John	20	1, H. R. S.	t m f		1	Farmer
	j	McVity, William	24	3, H. R. S.	f m f		1	Farmer
	j	McVity, Robert	24	3, H. R. S.	f m f		1	Farmer
	j	McGregor, William	18 and 19	2, H. R. S.	f m f		1	Farmer
	j	McIntosh, James	31	6, L. R. S.	f m f		1	Farmer
	j	McLean, John	19, 20	4, H. R. S.	o m f		1	Farmer
	j	McDonald, James	32 and part 31	1, L. R. S.	o m f		4	Farmer



No. on Roll.	Juror.	NAME.	No. of Lot or Part of Lot.	Concession or Street.	O. 2. L. H. S. or E. S.	P. O.	Occupation.	
84	j	McCartney, Hugh	Part 31	1, L. R. S.	o m f	4	Farmer	
85	j	McCartney, Robert	Part lot 5, other	McDonald's Survey	f m f	4	Farmer	
88	j	McCartney, George	Part lot 9 } prem.	McDonald's Survey	f m f	4	Farmer	
460	j	McDowell, James	22	2, H. R. S.	t m f	1	Farmer	
454	j	McGregor, Frederick	18 and 19	2, H. R. S.	o m f	1	Farmer	
307	j	McAdam, George	East half 31	7, L. R. S.	f m f	2	Farmer	
363	j	McGill, Adam	3, Gov. Survey	1, H. R. S.	t m f	1	Laborer	
379	j	McNamara, James	Part 15	1, H. R. S.	f m f	1	Laborer	
404	j	McMicheal, Thomas	34	1, H. R. S.	t m f	3	Farmer	
378	j	Nash, William	Gov. Survey, 34	1, H. R. S.	f m f	1	Laborer	
260	j	Notr, George	40	3, L. R. S.	o m f	3	Farmer	
111	j	Nott, James	43	1, L. R. S.	f m f	3	Farmer	
112	j	Nott, Frederick R.	43	1, L. R. S.	f m f	3	Farmer	
368	j	Neilans, Alex.	Part 16	1, H. R. S.	f m f	1	Laborer	
113	j	Nott, Albert A.	43	1, L. R. S.	f m f	3	Farmer	
479	j	O'Brien, Thomas	36	2, H. R. S.	o m f	3	Farmer	
259	j	Pepper, Roger	38	3, L. R. S.	o m f	4	Farmer	
189	j	Plewes, Robert	38	2, L. R. S.	o m f	3	Farmer	
88	j	Plewes, William	Part 31	1, L. R. S.	o m f	4	Rt farmer	
117	j	Peacock, Robert	46	1, L. R. S.	o m f	3	Farmer	
306	j	Papple, Edward	31	5, L. R. S.	o m f	4	Farmer	
192	j	Plewes, William G.	40, S. $\frac{1}{2}$ & N.W. $\frac{1}{4}$	39	2, L. R. S.	f m f	3	Farmer
190	j	Plewes, Frank	33	2, L. R. S.	f m f	3	Farmer	
547	j	Routledge, William	26	4, H. R. S.	f m f	2	Farmer	
546	j	Routledge, Charles	26	4, H. R. S.	o m f	2	Farmer	
543	j	Routledge, John W.	24	4, H. R. S.	t m f	1	Farmer	
461	j	Robb, John	23	2, H. R. S.	c m t	2	Farmer	
413	j	Ransford, John	35 to 40	1, H. R. S.	o m f	3	Mer. & Far.	
102	j	Ross, Alex.	34 and 33	1, L. R. S.	o m f	4	Farmer	
97	j	Robinson, Joseph	V. L. 5	McDonald's Survey	o m f	4	Wagonm'kr	
103	j	Ross, William J.	34	1, L. R. S.	f m f	4	Farmer	
291	j	Reid, Samuel	West half 32	4, L. R. S.	t m i	4	Farmer	
83 $\frac{1}{2}$	j	Rogerson, Walter S.	39	3, L. R. S.	f m i	4	Farmer	
898	j	Ross, Selton	34	1, L. R. S.	f m f	4	Farmer	
899	j	Ross, John	34	1, L. R. S.	f m f	4	Farmer	



2  
3  
4  
5  
6  
7  
8  
9  
10  
11  
12  
13  
14  
15  
16  
17  
18  
19  
20  
21  
22  
23  
24  
25  
26  
27  
28  
29  
30  
31  
32  
33  
34  
35  
36  
37  
38  
39  
40  
41  
42  
43  
44  
45  
46  
47  
48  
49  
50  
51  
52  
53  
54  
55  
56  
57  
58  
59  
60  
61  
62  
63  
64  
65  
66  
67  
68  
69  
70  
71  
72  
73  
74  
75  
76  
77  
78  
79  
80  
81  
82  
83  
84  
85  
86  
87  
88  
89  
90  
91  
92  
93  
94  
95  
96  
97  
98  
99  
100

No. on Roll.	Juror.	NAME.	No. of Lot or Part of Lot.	Concession or Street.	O. T. L. H. S. or F. S.	P. O.	Occupation.
125		Swinbank, George	Part 51	1, L. R. S.	o m f	3	Farmer
108		Stephens, John	North half 41	1, L. R. S.	o m f	3	Farmer
109		Stephens, Charles	South half 42	1, L. R. S.	o m f	3	Farmer
82		Scott, William	V. L. 1, 2, 4 & other prem.	McDonald's Survey	o m f	4	Merchant
126		Swinbank, Walter	Part 51	1, L. R. S.	o m f	3	Farmer
83		Scott, Andrew	Part 31	1, L. R. S.	f m f	4	Merchant
516	j	Turner, George	29, East half 30	3, H. R. S.	f m f	3	Farmer
467		Turner, Albert	29	2, H. R. S.	o m f	3	Farmer
463	j	Townsend, Thomas	26	2, H. R. S.	o m f	3	Farmer
127		Taylor, Richard	Part 51	1, H. R. S.	o m f	3	Rt farmer
464		Townsend, Amos	27	2, H. R. S.	f m f	3	Farmer
465	j	Townsend, William	28	2, H. R. S.	f m f	3	Farmer
128		Taylor, William	Part 51	1, L. R. S.	f m f	3	Laborer
395	j	Taylor, Francis	25	1, H. R. S.	f m f	1	Far. Ten.
196	j	White, William	41	2, L. R. S.	f m f	3	Farmer
195		White, David, A.	41	2, L. R. S.	f m f	3	Farmer
194		White, J. H.	41, and other prem.	2, L. R. S.	o m f	3	Farmer
182		Walker, James	33	2, L. R. S.	f m f	4	Farmer
198		Walter, Edward	42	2, L. R. S.	f m f	3	Farmer
186		Wise, John	35	2, L. R. S.	o m f	4	Farmer
400		Wise, Samuel	29	1, H. R. S.	f m f	3	
120		Wiltse, Levi	South half 48	1, L. R. S.	o m f	3	Farmer
118		Wiltse, A. D.	47	1, L. R. S.	o m f	3	Farmer
106		Watts, George	38	1, L. R. S.	o m f	4	Farmer
407		White, George H.	40, and part 41	1, H. R. S.	t m f	3	Farmer
403		Wise, John	East half 33	1, H. R. S.	o m f	3	Farmer
289		Watt, Alex.	31	4, L. R. S.	o m f	4	Farmer
90		Woodly, Thomas	Part 31	1, L. R. S.	o m f	4	Rt farmer
121		Wiltse, Harriston	North half 48	1, L. R. S.	o m f	4	Farmer
290	j	Watt, Alex. A., jr.	31	4, L. R. S.	f m f	4	Farmer

PART 2.—List of Persons Entitled to Vote at Municipal Elections Only.

110	Avery, Charles F.	North half 42	1, L. R. S.	Owner	4	Farmer
339	Archibald, James	Part 16	1, H. R. S.	Owner	1	Horsedealer
115	Avery, John	44	1, L. R. S.	Owner	3	Farmer
91	Baird, Mrs. C.	V. L. 49	McDonald's Survey	Owner	4	Widow

No. on  
Page

48  
26  
50  
39  
40  
197  
358

450

373

396  
116  
406  
295

305

478

472  
475  
543

309  
372  
94  
181

105  
99



## POLLING SUB-DIVISION NO. 2

No. on Roll.	Juror.	NAME.	No. of Lot or Part of Lot.	Concession or Street.	O.T. L.H.S. or L.K.S.	P.O.	Occupation.
466		Coleman, Frank	22				
261		Caldwell, Mrs. J.	South half 36	2, H. R. S.	Owner		Farmer
508		Carnochan, Mrs. J.	21	3, L. R. S.	Owner		Widow
390		Carter, Mary A.	22 and 25	3, H. R. S.	Owner	1	Widow
408		Couch, Arthur	Part 51	1 and 2, H. R. S.	Owner	1	Widow
197		Cudmore, Mrs.	West half 30	1, L. R. S.	Owner	3	Butcher
358		Clement, Margaret	Part 15	3, H. R. S.	Owner		Widow
				1, H. R. S.	Owner	1	Widow
450		Dickson, John T.	15	2 and 3, H. R. S.	O. God P. O.		Farmer
373		Fowler, Mrs. C.	Block 2, part 15	Har., Con. 1, H. R. S.	Owner	1	Widow
396		Gibbons, Wm. W.	25	1, H. R. S.	Owner	1	Farmer
116		Grant, William	45	1, L. R. S.	Owner	3	Farmer
406		Gillespie, David	34	1, H. R. S.	Owner		Doctor
295		Gray, Dr. Thomas	West half 32	4, L. R. S.	O. Park.		
365		Hancock, Hattie	6 and 7	Worsley Survey	Owner	1	Widow
478		Johns, Mrs. Jane	West half 33 and 35	1, H. R. S. and 2	Owner	3	Widow
472		Layton, Mrs. F.	33	3	Owner	3	Widow
475		Layton, John	33	2	F		Farmer
543		Landsborough, John	24	4, H. R. S.	Owner	1	Merchant
309		McIntosh, Mrs. Jane	31	6, L. R. S.	Owner	2	Widow
372		McCulloch, Mrs. S.	Part 15	1, H. R. S.	Owner	1	Widow
94		McDonald, Gilbert	Part of 31	1, L. R. S.	Owner	4	
181		McTavish, Duncan	31	3, L. R. S.	Owner	4	Farmer
105		Notley, Samuel	36	1, L. R. S.	O. Lon.		
99		Nevins, Emily A.	Part 31	1, L. R. S.	Owner	4	Spinster

5  
No.

4  
1  
4  
4

8  
41

38  
10  
37

10

25  
40  
8

---

PA

42  
41  
12  
9

4  
37  
39  
53  
42

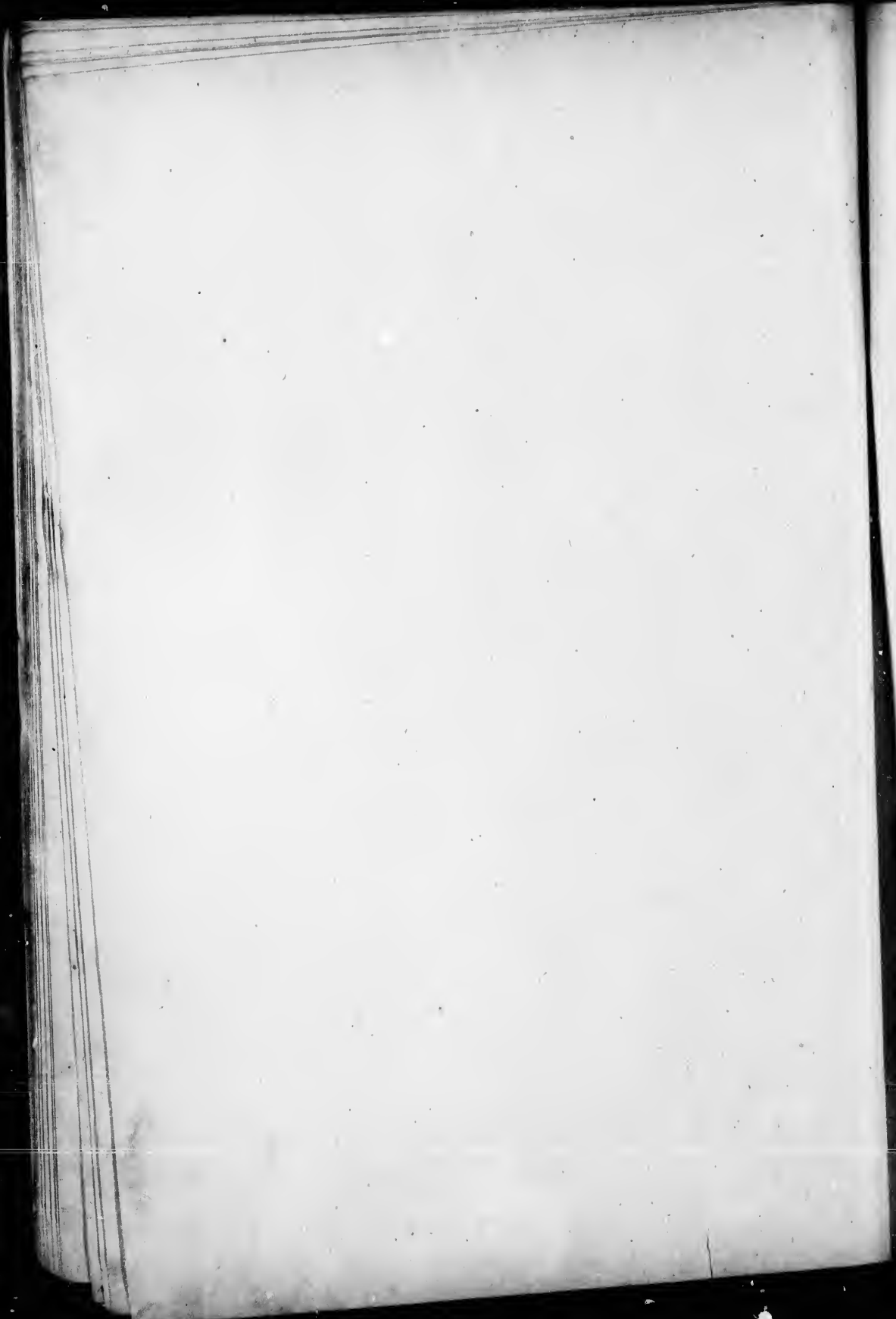
38

POLLING SUB-DIVISION NO. 2

No. on Roll.	Juror.	NAME.	No. of Lot or Part of Lot.	Concession or Street.	O. T. S. or F. S.		P. O.	Occupation.
					O.	F.		
411		Picket, Wm. F.	Part 41	1, H. R. S.	Owner		3	Cooper
123		Plumsteel, Henry	Part 49 and 50	1, L. R. S.	Owner		3	Merchant
409		Picket, John	Part 41	1, H. R. S.	Owner		3	Farmer
410		Picket, John L.	Part 41	1, H. R. S.	F		3	Farmer
98		Rattenbury, William	Part 31	1, L. R. S.	Owner		4	Farmer
412		Ranford, Richard	35, 36, 37, 38, 39	1, H. R. S.	Owner		3	Merchant
383		Scott, Dr. J. G.	Part 16	1, H. R. S.	Owner		1	M. D.
107		Stanbury, George	37, 40, South half 41	1, L. R. S.	Owner		3	Drover
376		Sellery, Thomas G.	9, 10	Worsley Survey	F		3	Laborer
105		Tomlinson, Frederick	36	1, L. R. S.	Ten't		4	Farmer
252		Walker, Catherine	West half 30	4, L. R. S.	Owner		4	Spinster
401		Whitely, Mrs. Rebecca	30	1, H. R. S.	Owner		3	Widow
89		Wolf, Mrs. M.	Part park lot 8	1, L. R. S.	Owner		4	Widow

PART 3.—List of persons entitled to vote at elections to the Legislative Assembly.

423	Brown, John	38	1, H. R. S.	m f	3	Laborer
415	Burton, William	38	1, H. R. S.	m f	3	Laborer
124	Bennett, Thomas	South half 50	1, L. R. S.	m f	3	Laborer
92	Baird, James	Part 31	1, L. R. S.	m f	4	Rt farmer
42	Cook, Henry	Part 38	1, H. R. S.	m f	3	Laborer
375	Currie, A. T.	Part 15	1, H. R. S.	m f	1	Laborer
391	Calton, Charles	22	1, H. R. S.	m f	1	Laborer
539	Cameron, Peter	19 and 20	4, H. R. S.	m f	2	Laborer
424	Carter, Robert	40	1, H. R. S.	m f	3	Laborer
385	Eddy, George	18	1, H. R. S.	m f	1	Laborer



1  
=

No. on

1

4

4

5

4

5

4

30

11

4

4

4

4

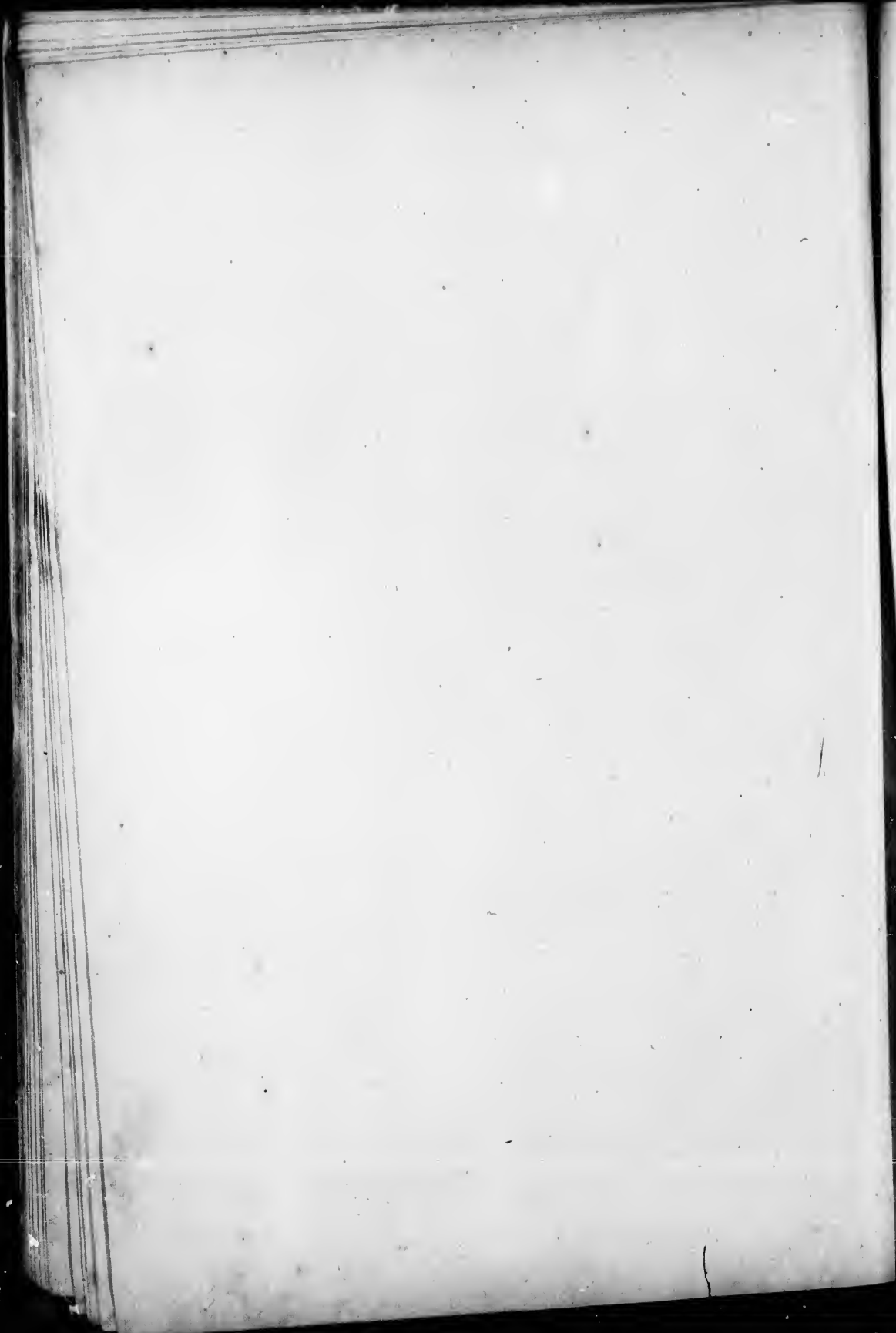
4

4

10

## POLLING SUB-DIVISION NO. 2

No. on Roll.	Juror.	NAME.	No. of Lot or Part of Lot.	Concession or Street.	O.S., L.H.S., or F.S.	P.O.	Occupation.
130 425		French, Daniel Foster, William	Part 50 38	1, L. R. S. 1, H. R. S.	m f m f	3	C'k H. of R. Laborer
416		Graelis, Edward	Part 38	1, H. R. S.	m f	3	Laborer
453		Hannah, John, jr.	16	2, H. R. S.	m f	1	Laborer
419		Jarvis, John	38	1, H. R. S.	m t	3	Laborer
517		Loyd, Melward	29	3, H. R. S.	m f	3	Laborer
418 544 422		Mason, Charles Malins, William McIntyre, James	38 24 Part 38	1, H. R. S. 4, H. R. S. 1, L. R. S.	m f m f m f	3 2 3	Laborer Laborer Laborer
369		Neilans, John	Part 16	1, H. R. S.	m f	1	Laborer
119 87		Rainy, Robert Ross, Daniel	47 29	1, L. R. S. 2, L. R. S.	m f m f	3 4	Laborer Laborer
414 421		Sellers, William Sanderson, Thomas	38 Part 38	1, H. R. S. 1, H. R. S.	m f m f	3 3	Laborer Laborer
462		Turnbull, Andrew	23	2, H. R. S.	m f	2	Laborer
427 426 417 101		West, Bernice E. West, William West, George Weaver, Isaac	38 38 38 32	1, H. R. S. 1, H. R. S. 1, H. R. S. 1, L. R. S.	m f m f m f m f	3 3 3 4	Laborer Laborer Laborer Laborer



1  
2  
1  
2  
2  
7  
7  
2  
1  
1  
2  
1  
2

POLLING SUB-DIVISION NO. 3

Comprising the First, Second, and Third Concessions, L. R. S., South of the Mill Road, and the Twelfth, Thirteenth, Fourteenth, and Fifteenth Concessions, H. R. S.

No. on Roll.	Juror.	NAME.	No. of Lot or Part of Lot.	Concession or Street.	O. T. L. H. S. or F. or E.	P. O.	Occupation.
53	j	Aikenhead, John	23	1, L. R. S.	o m f	4	Farmer
719		Alexander, John	7	13, H. R. S.	o m f	6	Farmer
32		Acheson, Rev. Samuel	Part 16	1, L. R. S.	In. m f	5	Clergyman
720	j	Alexander, Charles	7	13, H. R. S.	o m f		Farmer
208	j	Buchanan, Alex., jr.	3 and 4	3, L. R. S.	f m f	7	Farmer
5		Bell, James	3	1, L. R. S.	f m f	7	Farmer
60	j	Berry, William	28	1, L. R. S.	t m f	4	Farmer
22		Bell, Andrew	12	1 and 2, L. R. S.	o m f	5	Farmer
52		Butt, Elam	22	1, L. R. S.	o m f	5	Farmer
58	j	Boyce, Thomas	27	1, L. R. S.	o m f	4	Farmer
4		Bell, William, jr.	3	1, L. R. S.	f m f	7	Farmer
135		Bell, Robert D.	3	2, L. R. S.	o m f	7	Farmer
207		Buchanan, Alex., sr.	3 and 4	3, L. R. S.	o m f	7	Farmer
205		Buchanan, Andrew	1	3, L. R. S.	o m f	7	Farmer
247		Bell, David	28	3, L. R. S.	o m f	7	Farmer
167	j	Butt, William	22	3, L. R. S.	o m f	4	Farmer
7		Bell, James A.	Part 4	1, L. R. S.	o m f	5	Farmer
209		Buchanan, Samuel	3 and 4	1, L. R. S.	o m f	7	Farmer
6		Bell, Albert	3	3, L. R. S.	f m f	7	Farmer
176	j	Buckle, Richard	28	1, L. R. S.	f m f	7	Farmer
23		Bell, Andrew, jr.	12	2, L. R. S.	o m f	4	Farmer
24		Bell, Daniel S.	12	1 and 2, L. R. S.	f m f	5	Farmer
34	j	Balfour, John	Part 16	1 and 2, L. R. S.	f m f	5	Farmer
59	j	Boyce, James	27	1, L. R. S.	t m f	5	Merchant
				1, L. R. S.	t m f	4	Farmer
51	j	Cudmore, Edward	21	1, L. R. S.	f m f	5	Farmer
50	j	Cudmore, Samuel	21	1, L. R. S.	f m f	5	Farmer
21		Crawford, John	11	1, L. R. S.	o m f	7	Farmer
20	j	Crawford, James	11	1, L. R. S.	f m f	7	Farmer
40	j	Cooper, James	17	1, L. R. S.	o m f	5	Farmer
49		Cudmore, Wm., sr.	21	1, L. R. S.	o m f	5	Farmer
139	j	Caldwell, John	8, and other prem.	3, L. R. S.	o m f	5	Dealer
216		Clark, Matthew	8	2, L. R. S.	o m f	7	Farmer
144	j	Clark, Lewis	8	2, L. R. S.	o m f	7	Rt farmer
234	j	Chesney, James G.	22	3, L. R. S.	f m f	7	Farmer
238		Chapman, Wm., sr.	24	3 and 2, L. R. S.	o m f	4	Farmer
706		Connor, James	1	13, H. R. S.	o m f	4	Farmer
705		Connor, Arthur	1	13, H. R. S.	o m f	6	Farmer
239		Chapman, Wm., jr.	24	13, H. R. S.	f m f	6	Farmer
29		Cooper, David W.	Part 16	2 and 3, L. R. S.	f m f	4	Farmer
41		Cooper, William W.	17	1, L. R. S.	f m f	5	Farmer
145		Clark, John	8	1, L. R. S.	f m f	5	Farmer
241		Caldwell, Edward	25	2, L. R. S.	f m f	7	Farmer
146		Caldwell, Arthur	South half 9	3, L. R. S.	o m f	4	Farmer
141		Caldwell, William	South half 8	2, L. R. S.	f m f	7	Farmer
240		Chapman, Thomas	24	3, L. R. S.	f m f	7	Farmer
				2 and 3, L. R. S.	f m f	4	Farmer

10

No. on

14  
45  
25  
23  
17  
16  
17  
17  
6  
72  
23  
24  
1  
72

23  
16  
69  
71

21  
72  
14  
15  
23

3  
6

72  
72  
71  
81  
70  
72

73



No. on Roll.	Juror.	NAME.	No. of Lot or Part of Lot.	Concession or Street.	O. F. L. H. S. or F. S.			P. O.	Occupation.
					O.	F.	L. H. S. or F. S.		
143	j	Dilling, Samuel	12	2, L. R. S.					
451	j	Dolg, William	14	2, L. R. S.	o	m	f	7	Farmer
229	j	Dayman, Peter, sr.	South half 19	3, L. R. S.	o	m	f	5	Farmer
231	j	Dayman, Humphrey	North half 19	3, L. R. S.	o	m	f	5	Farmer
170	j	Dayman, James	23	2, L. R. S.	f	m	f	5	Farmer
169	j	Dayman, John	23	2, L. R. S.	f	m	f	5	Farmer
174	j	Dallas, James	26	2, L. R. S.	o	m	f	5	Farmer
175	j	Dallas, John A.	South half 27	2, L. R. S.	o	m	f	4	Farmer
68	j	Dixon, William	V. L. 4, 5	2, L. R. S.	o	m	f	4	Farmer
723	j	Dalrymple, Robert	1	Armstrong's Survey	o	m	f	4	Hotel-keep.
230	j	Dayman, Thomas	South half 19	14, H. R. S.	o	m	f	6	Farmer
249	j	Drown, John	West half 28	3, L. R. S.	t	m	f	5	Mason
13	j	Dick, Gilbert	Part of south half 8	4, L. R. S.	t	m	f	5	Farmer
724	j	Dalrymple, George	1	1, L. R. S.	t	m	f	7	Drover
				14, H. R. S.	f	m	f	6	Farmer
233	j	Elder, Thomas	21	3, L. R. S.	o	m	f	5	Farmer
165	j	Elgie, Robert T.	20	2, L. R. S.	o	m	t	5	Farmer
695	j	Eyre, G. S.	Part 3	12, H. R. S.	f	m	f	6	Farmer
710	j	Eyre, Thomas T.	Part 2	13, H. R. S.	o	m	f	6	Farmer
217	j	Fairbairn, George	11	3, L. R. S.	f	m	f	7	Farmer
728	j	Fairbairn, Elliott, sr.	3	14, H. R. S.	o	m	f	7	Farmer
147	j	Ford, John	North half 9	2, L. R. S.	o	m	f	7	Farmer
154	j	Forsyth, Thomas	North half 15	2, L. R. S.	f	m	f	5	Teacher
235	j	Forsyth, Alex., sr.	22	3, L. R. S.	h	m	f	5	Farmer
35	j	Grant, Peter	Part 16	1, L. R. S.	o	m	f	5	Gardener
66	j	Grainger, James	Arm. Sur., Lots 11, 26, 28	1, L. R. S.	f	m	f	4	Laborer
726	j	Horton, Frank	2	14, H. R. S.	f	m	f		Farmer
725	j	Horton, John	2	14, H. R. S.	f	m	f	7	Farmer
717	j	Horton, Henry	West half 5	13, H. R. S.	f	n	f	7	Teacher
81	j	Hill, George	30, 31, 7	Armstrong's Survey	f	m	f	4	Butcher
702	j	Horton, Nicholas	7	12, H. R. S.	f	m	f	6	Farmer
727	j	Horton, Thomas	2	14, H. R. S.	f	m	f	7	Farmer
730	j	Imrie, John	1	15, H. R. S.	o	m	f	7	Farmer

No. on =

I

i

10

22

17

73

24

4

8

6

17

71

70

15

16

70

2

7

2

4

1

21

22

22

15

15

22

22

15

16

17

17

17

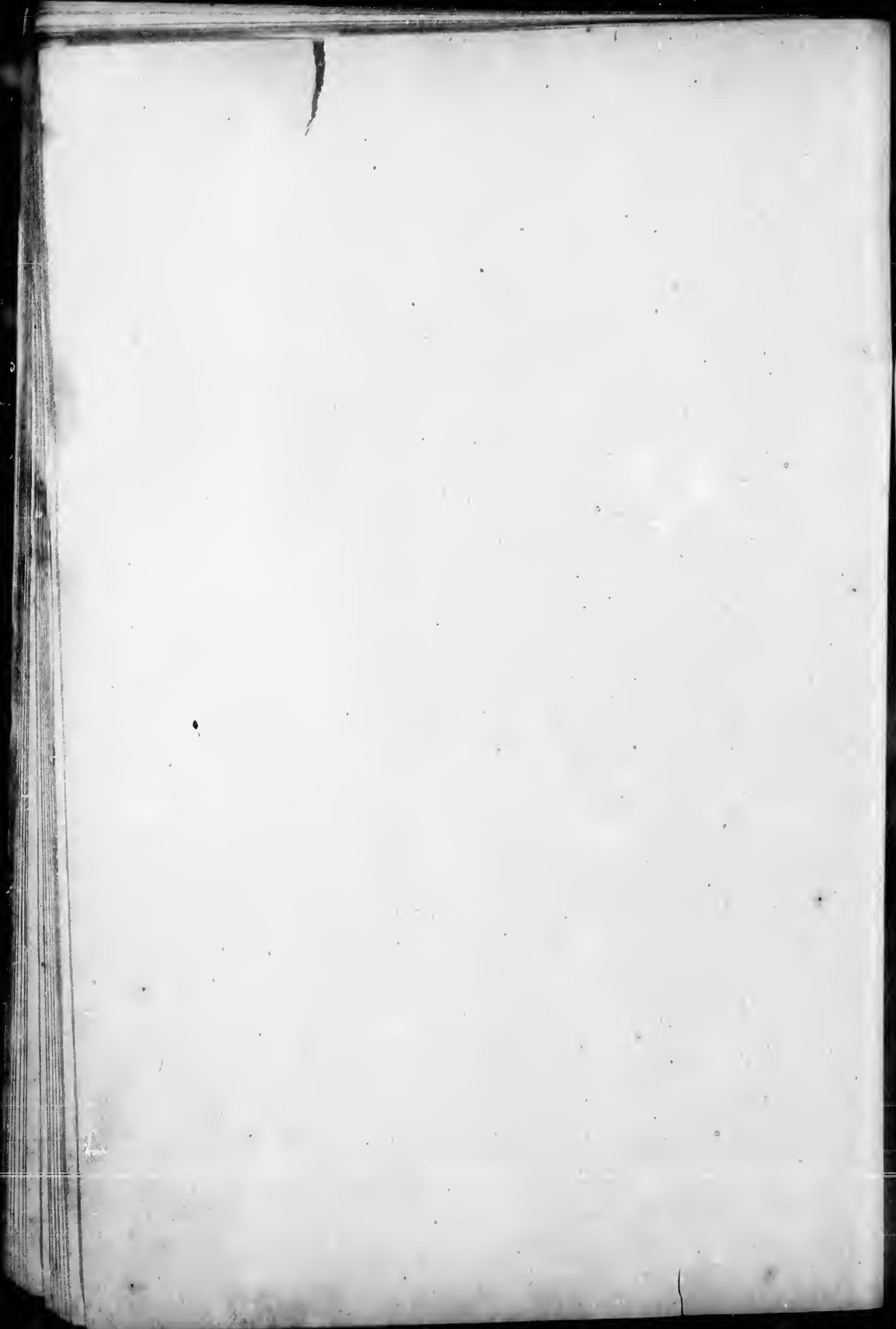
25

71

70

POLLING SUB-DIVISION NO. 3

No. on Roll.	Juror.	NAME.	No. of Lot or Part of Lot.	Concession or Street.	O. T. L. H. S. or F. S.	P. O.	Occupation.
64		Jamieson, J. B.	V. L. 12, 14, 15, 22	1, L. R. S. (Armstrong's Sur.	o m f	4	Shoem'kr
131	j	Kernick, Thomas	Parts 1 and 2	2, L. R. S.	o m f	7	Farmer
73	j	Kaiser, John G.	3	Armstrong's Survey	f m f	4	Blacks'th
171	j	Latta, Jacob	3	13, H. R. S.	o m f	6	Farmer
1	j	Lammie, William	1	1, L. R. S.	t m f	7	Farmer
48	j	Mulholland, George	20	1, L. R. S.	o m f	5	Farmer
163	j	Moffatt, John	North half 18	1, L. R. S.	o m f	5	Farmer
33	j	Mellis, Robert	Part 16	1, L. R. S.	o m f	5	Merchant
47	j	Mulholland, James	20	1, L. R. S.	o m f	5	Farmer
3	j	Murray, Andrew	2	1, L. R. S.	f m f	7	Farmer
228	j	Murray, Robert	18	3, L. R. S.	o m f	5	Farmer
177	j	Munroe, John	30	2, L. R. S.	o m f	4	Farmer
74	j	Marks, R. W.	V. L. 2, 6, 7, 8	McDonald's Survey	o m f	4	Merchant
731	j	Mitchell, John T.	2	15, H. R. S.	o m f	8	Farmer
246	j	Monteith, Henry C.	27	3, L. R. S.	o m f	4	Farmer
45	j	Monteith, Alexander	19	1, L. R. S.	f m f	5	Farmer
96	j	Munroe, George	31	McDonald's Survey	f m f	4	Butcher
63	j	Muir, Rev. Walter	Part 30	1, L. R. S.	l n. m f	4	Clergyman
178	j	Munroe, Daniel	30	2, L. R. S.	f m f	4	Farmer
712	j	McLeod, Thomas	3	13, H. R. S.	f m f	6	Farmer
704	j	McLean, James M.	8	12, H. R. S.	f n f	6	Farmer
158	j	McLean, James G.	17	2, L. R. S.	f m f	5	Farmer
166	j	McDonald, John	21	2, L. R. S.	o m f	5	Farmer
703	j	McLean, D. B.	8	12, H. R. S.	o m f	6	Farmer
25	j	McNevin, John	13	1, L. R. S.	t m f	5	Miller
71	j	McIntosh, David	V. L. 3, 8, 9, 10	Armstrong's Survey	o m f	4	V. S.
28	j	McLean, David C.	14 and 15	1, L. R. S.	o m f	5	Farmer
43	j	McLean, Robert B.	18	1, L. R. S.	o m f	5	Farmer
10	j	McLaren, Robert jr.	7 and south half 8	1, L. R. S.	f m f	7	Farmer
12	j	McLaren, John	South half 7	1, L. R. S.	o m f	7	Farmer
216	j	McFarland, James	South half 10	3, L. R. S.	o m f	7	Farmer
223	j	McGregor, John sr.	15	3, L. R. S.	o m f	5	Farmer
222	j	McGregor, Hugh	14	3, L. R. S.	o m f	5	Farmer
153	j	McLean, James	13 and south half 15	2, L. R. S.	o m f	5	Farmer
155	j	McKay, George T.	16	2, L. R. S.	o m f	5	Farmer
226	j	McGregor, Archibald	16	3, L. R. S.	o m f	5	Farmer
227	j	McDougall, Wm. jr.	Part 17	3, L. R. S.	o m f	5	Farmer
157	j	McLean, John B.	17	2, L. R. S.	o m f	5	Farmer
164	j	McDonald, John	19	2, L. R. S.	o m f	5	Farmer
171	j	McKenzie, Simon	25	2, L. R. S.	o m f	5	Farmer
172	j	McKenzie, Simon jr.	25	2, L. R. S.	o m f	4	Farmer
173	j	McKenzie, Alex.	25	2, L. R. S.	f m f	4	Farmer
251	j	McKenzie, John	East half 30	3, L. R. S.	f m f	4	Farmer
718	j	McLean, John	6	13, H. R. S.	o m f	4	Farmer
701	j	McLean, Donald	6	12, H. R. S.	o m f	6	Farmer



2

7

22  
23  
66  
66  
8

70  
7  
15  
5  
1  
21  
70  
21  
6  
71  
23  
13  
1  
13

## POLLING SUB-DIVISION NO. 3

No. on Roll.	Juror.	NAME.	No. of Lot or Part of Lot.	Concession or Street.	O.S., L.H.S. or E.S.	P.O.	Occupation.
691	j	McTaggart, N. H.	Part 1				
56	j	McMillan, Wm. T.	26	12, H. R. S.	o m f	6	Merchant
224	j	McGregor, John jr.	15	1, L. R. S.	o m f	4	Farmer
225	j	McGregor, James	15	3, L. R. S.	f m f	5	Farmer
39	j	McDougall, James	North half 16	3, L. R. S.	f m f	5	Farmer
30	j	McKay, John	Part 16	1, L. R. S.	o m f	5	Farmer
44	j	McLean, James B.	18	1, L. R. S.	o m f	5	Farmer
72	j	McIntosh, John W.	33, and other prem.	1, L. R. S.	o m f	5	Farmer
237	j	McNaughton, John	23	1, L. R. S.	f m f	4	Farmer
				3, L. R. S.	f m f	4	Farmer
693	j	Newell, Calvin	2	12, H. R. S.	f m f	6	Farmer
67	j	Nevin, Alexander	V. L. 22 and 23	Armstrong's Survey	o m f	4	Plasterer
692	j	Newell, Robert sr.	2	12, H. R. S.	o m f	6	Farmer
709	j	Nichol, Thomas	Part 1	13, H. R. S.	o m f	6	Painter
694	j	Newell, Thomas	2	12, H. R. S.	f m f	6	Farmer
248	j	O'Brien, Frank	29	3, L. R. S.	t m f	4	Farmer
55	j	Patterson, James	25	1, L. R. S.	o m f	4	Farmer
733	j	Pepper, William	3	15, H. R. S.	f m f	7	Farmer
220	j	Robertson, Thomas	13	3, L. R. S.	o m f	5	Farmer
221	j	Robertson, James	13	3, L. R. S.	f m f	5	Farmer
697	j	Robertson, Peter	4	12, H. R. S.	o m f	6	Farmer
698	j	Robertson, John	4	12, H. R. S.	f m f	6	Farmer
87	j	Ross, Daniel	29	2, L. R. S.	t m f	4	Farmer
700	j	Slavin, William	5	12, H. R. S.	o m f	7	Farmer
76	j	Simpson, Cecil	Arm. Sur., No. 1	1, L. R. S.	f m f	4	Merchant
150	j	Smillie, A. G.	11	2, L. R. S.	o m f	7	Farmer
54	j	Smillie, Wm. R.	24	1, L. R. S.	o m f	4	Farmer
16	j	Stewart, Alexander	9	1, L. R. S.	o m f	7	Farmer
212	j	Stewart, John	6	3, L. R. S.	o m f	7	Farmer
707	j	Stark, James	Part 1	13, H. R. S.	f m f	6	Laborer
218	j	Stewart, Peter	12	3, L. R. S.	f m f	5	Farmer
65	j	Swann, James	V. L. 13	Armstrong's Survey	o m f	4	Agent
713	j	Shepherd, John sr.	4	13, H. R. S.	o m f	6	Farmer
232	j	Sproat, William	20	3, L. R. S.	o m f	5	Farmer
132	j	Stewart, Robert sr.	Parts 1 and 2	2, L. R. S.	o m f	7	Farmer
17	j	Stewart, John	9	1, L. R. S.	f m t	7	Farmer
133	j	Stewart, Duncan	Part 1 and 2	2, L. R. S.	f m f	7	Farmer

7

16  
16  
21  
21  
6  
13  
13  
16  
8

---

F

142  
8

a 95  
15

POLLING SUB-DIVISION NO. 3

No. on Roll.	Juror.	NAME.	No. of Lot or Part of Lot.	Concession or Street.	O. T. S.		P. O.	Occupation.
					L. H. S.	or F. S.		
75	j	Simpson, Robert G.	Lot 1, part 30	Armstrong's Survey	f	m	f	4 Merchant
714	j	Shepherd, John, jr.	4	13, H. R. S.	f	m	f	6 Farmer
19	j	Smillie, James	10	1, L. R. S.	f	m	f	7 Farmer
134	j	Stewart, Robert, jr.	Part 1 and 2	2, L. R. S.	f	m	f	7 Farmer
57	j	Scott, George	Part 27	1, L. R. S.	f	m	f	4 Engineer
69	j	Snell, Thomas R.	Arm. Sur., 4 and 5	1, L. R. S.	t	m	f	4 Hotel-keep.
95	j	Smith, Harry	McDon. Sur., No. 16	1, L. R. S.	t	m	f	4 Laborer
78	j	Turner, George A.	30	1, L. R. S. other prem	o	m	f	4 Farmer
206	j	Traquair, Robert	2	2, L. R. S.	o	m	f	7 Farmer
727	j	Traquair, John	4	14, H. R. S.	o	m	f	7 Farmer
36		Upshall, Joseph	Part 16	1, L. R. S.	o	m	f	5 Rt farmer
721		Varley, Robert	South half 2	13, H. R. S.	o	m	f	6 Rt farmer
162	j	Workman, John	South half 18	2, L. R. S.	f	m	f	5 Farmer
160	j	Workman, Thomas	South half 18	2, L. R. S.	f	m	f	5 Laborer
210	j	Wood, John	5	3, L. R. S.	o	m	f	7 Farmer
213	j	Wood, Andrew	9	3, L. R. S.	c	m	f	7 Farmer
81	j	Watson, Robert	29	1, L. R. S.	o	m	f	4 Farmer
136	j	Wood, John, jr.	4, and other prem.	2, L. R. S.	t	m	f	7 Farmer
138	j	Wood, Watson	4	2, L. R. S.	f	m	f	7 Farmer
161	j	Workman, David	South half 18	2, L. R. S.	f	m	f	5 Laborer
62	j	Watson, John S.	29	1, L. R. S.	f	m	f	4 Farmer

PART 2.—List of Persons Entitled to Vote at Municipal Elections Only.

142		Bell, Donald	6	2, L. R. S.	Owner	7	Farmer
8		Bell, James W.	East half 5	1, L. R. S.	Owner	7	Farmer
a 95		Cameron, Mrs. D.	6, Arm. Sur., pt 30	1, L. R. S.	Owner	4	Widow
15		Coxworth, James	North half 8	1, L. R. S.	Owner	7	Farmer





## POLLING SUB-DIVISION NO. 3

No. on Roll.	Juror.	NAME.	No. of Lot or Part of Lot.	Concession or Street.	O. 2, 3, 4, 5, 6, 7, 8, 9, 10, 11, 12, 13, 14, 15, 16, 17, 18, 19, 20, 21, 22, 23, 24, 25, 26, 27, 28, 29, 30, 31, 32, 33, 34, 35, 36, 37, 38, 39, 40, 41, 42, 43, 44, 45, 46, 47, 48, 49, 50, 51, 52, 53, 54, 55, 56, 57, 58, 59, 60, 61, 62, 63, 64, 65, 66, 67, 68, 69, 70, 71, 72, 73, 74, 75, 76, 77, 78, 79, 80, 81, 82, 83, 84, 85, 86, 87, 88, 89, 90, 91, 92, 93, 94, 95, 96, 97, 98, 99, 100.		Occupation.
					O. 2, 3, 4, 5, 6, 7, 8, 9, 10, 11, 12, 13, 14, 15, 16, 17, 18, 19, 20, 21, 22, 23, 24, 25, 26, 27, 28, 29, 30, 31, 32, 33, 34, 35, 36, 37, 38, 39, 40, 41, 42, 43, 44, 45, 46, 47, 48, 49, 50, 51, 52, 53, 54, 55, 56, 57, 58, 59, 60, 61, 62, 63, 64, 65, 66, 67, 68, 69, 70, 71, 72, 73, 74, 75, 76, 77, 78, 79, 80, 81, 82, 83, 84, 85, 86, 87, 88, 89, 90, 91, 92, 93, 94, 95, 96, 97, 98, 99, 100.	P. O.	
152		Doig, Isabella	14	2, L. R. S.	Owner	5	Spinster
696		Eyre, Mrs. Mary	4	12, H. R. S.	Owner		Widow
140		Horton, Noah	South half 7	3, L. R. S.	Owner		Farmer
242		Mustard, Miss Ann	26	3, L. R. S.	Owner	4	Spinster
38		Mellis, Thomas	Part 16	1, L. R. S.	Owner	5	Black's'th
243		Mustard, Miss Marg.	26	3, L. R. S.	Owner	4	Spinster
2		Murray, James	1	1, L. R. S.	Owner	7	Rt farmer
244		Mustard, Miss Mary	26	3, L. R. S.	Owner	4	Spinster
9		McArthur, James	East half 6	1, L. R. S.	Owner	7	Farmer
137		McFarlane, John	5	14, H. R. S.	Owner	7	Gent'man
156		McKay, Anna	South half 16	2, L. R. S.	F	5	Widow
250		McCartney, Robert	West half 30	3, L. R. S.	Owner	4	Farmer
37		Philips, Eliza	Part 16	1, L. R. S.	Owner	5	Widow
148		Petty, George	10	2, L. R. S.	Owner	7	Dealer
31		Redmond, Margaret	Part 16	1, L. R. S.	Owner	5	Widow
18		Smillie, Jane	10	1, L. R. S.	Owner	7	Widow
77		Simpson, Mrs. J. H.	Part 30, V. L. 1	Armstrong's Survey	Owner	4	Widow
79		Turner, Eliza A.	30	1, L. R. S.	Owner		Widow
159		Workman, Mrs. M. J.	South half 18	2, L. R. S.	Owner	5	Widow
716		Wren, George, sr.	East half 5	13, H. R. S.	Owner	6	Farmer
211		Wood, James	5	3, L. R. S.	Owner	7	Farmer

PAR

No. on  
Roll.

168  
26  
292

148

27  
248

218

698

4  
718  
738

8

23  
4

PART 3.—List of persons entitled to vote at elections to the Legislative Assembly

No. on Roll.	Juror.	NAME.	No. of Lot or Part of Lot.	Concession or Street.	O. F. S. L. H. S. C. F. S.	P. O.	Occupation.
168		Chapman, John	22	2, L. R. S.	m f	5	Laborer
26		Cooper, James F.	13	1, L. R. S.	m f	5	Laborer
292		Cumming, John	28	3, L. R. S.	m f	4	Laborer
149		Fairbairn, John	10	2, L. R. S.	m f	7	Laborer
27		Jefroy, Andrew	13	1, L. R. S.	m f	5	Laborer
245		Junor, Donald	26	3, L. R. S.	m f		Laborer
214		McLaren, William	9	3, L. R. S.	m f	7	Farmer
699		Parker, George	4	12, H. R. S.	m f	6	Laborer
42		Riley, William	17	1, L. R. S.	m f	5	Laborer
715		Ryckman, Henry	11	2, L. R. S.	m f	6	Laborer
734		Ross, Daniel	4	14, H. R. S.	m f	7	Laborer
80		Turner, David H.	31	2, L. R. S.	m f	4	Laborer
236		Wright, John	22	3, L. R. S.	m f	5	Laborer
46		Washington, Ezra	19	1, L. R. S.	m f	5	Laborer

No. on  
Roll

53  
55  
55  
62  
63

27  
53  
25  
28  
27  
63  
27  
27  
28

63  
55  
55  
55  
55  
55  
55  
6  
6  
3  
3  
5  
5  
5  
5

3  
2  
5  
5  
2  
2  
5

## POLLING SUB-DIVISION NO. 4

Comprising the Fourth, Fifth, Sixth, Seventh, Eighth, Ninth, Tenth and Eleventh Concessions, H. R. S., and that part of the Fourth, Fifth, Sixth and Seventh Concessions, L. R. S., South of the Mill Road.

No. on Roll.	Juror.	NAME.	No. of Lot or Part of Lot.	Concession or Street.	O. T. L. H. S. or F. S.	P. O.	Occupation.
534	j	Archibald, A. sr.	5	5, H. R. S.	o m f	2	Farmer
555	j	Archibald, Wm.	5	5, H. R. S.	f m f	2	Farmer
556	j	Archibald, John	5	5, H. R. S.	f m f	2	Farmer
628	j	Atkinson, Joseph	8	8, H. R. S.	f m f	2	Farmer
638	j	Alexander, John	12	8, H. R. S.	f m f	2	Farmer
278	j	Brownlee, George sr.	23	4, L. R. S.	o m f	1	Farmer
531	j	Bubolz, Wm.	11	4, H. R. S.	o m f	2	Farmer
288	j	Brock, Robert	29	4, L. R. S.	o m f	4	Farmer
287	j	Brock, George	29	4, L. R. S.	o m f	4	Farmer
279	j	Brownlee, Thos. H.	23	4, L. R. S.	o m f	1	Farmer
636	j	Bruce, Thomas	East half 13	8, H. R. S.	f m f	1	Farmer
277	j	Brownlee, Robert	North half 22	4, L. R. S.	f m f	1	Teacher
278	j	Berry, James	East half 21	4, L. R. S.	f m f	5	Farmer
280	j	Brownlee, George, jr.	23	4, L. R. S.	f m f	1	Farmer
632	j	Canning, Joseph	West half 10	8, H. R. S.	o m f	5	Farmer
596	j	Carter, Henry	West half 14	6, H. R. S.	o m f	2	Farmer
557	j	Chesney, William, sr.	6	5, H. R. S.	o m f	2	Farmer
529	j	Chesney, Henry	8	4, H. R. S.	o m f	2	Farmer
560	j	Chesney, David	8	5, H. R. S.	o m f	2	Farmer
530	j	Chesney, Pierson	9	4, H. R. S.	o m f	2	Farmer
534	j	Carnochan, Wm.	13	4, H. R. S.	o m f	2	Farmer
567	j	Cameron, James	13	5, H. R. S.	o m f	2	Farmer
620	j	Cluff, Samuel	1	8, H. R. S.	o m f	1	Farmer
631	j	Canning, Wm.	West half 10	8, H. R. S.	o m f	1	Farmer
311	j	Cameron, Wm.	30	6, L. R. S.	o m f	2	Farmer
312	j	Cameron, John	30	6, L. R. S.	o m f	2	Farmer
535	j	Carnochan, Charles	13	4, H. R. S.	o m f	2	Farmer
569	j	Coleman, Samuel	14	5, H. R. S.	o m f	2	Farmer
558	j	Chesney, Wm. P.	6	5, H. R. S.	f m f	2	Farmer
568	j	Coleman, George	14	5, H. R. S.	f m f	2	Farmer
590	j	Campbell, John	11	6, H. R. S.	f m f	2	Farmer
302	j	Dayman, Joseph	27	5, L. R. S.	t m f	2	Farmer
262	j	Doig, John	15	4, L. R. S.	o m f	5	Farmer
578	j	Doig, Robert	South half 6	6, H. R. S.	o m f	2	Farmer
561	j	Dobie, Wm.	9	5, H. R. S.	f m f	2	Farmer
263	j	Doig, Andrew	15	4, L. R. S.	f m f	5	Farmer
264	j	Doig, Thomas	15	4, L. R. S.	f m f	5	Teacher
573	j	Davis, Montgomery	2	6, H. R. S.	f m f	2	Farmer

No. on  
Roll.

64  
61  
67  
68

68  
64  
28  
63  
29  
28  
64  
60  
28

60  
28  
30  
28  
58

62  
63  
31  
57  
59  
27  
59  
60  
61  
65  
66  
68

53

6  
6  
6  
6  
5  
5

No. on Roll.	Juror.	NAME.	No. of Lot or Part of Lot.	Concession or Street.	O. T. L. H. S. or F. S.	P. O.	Occupation.
646	j	Elgie, William	3	9, H. R. S.	o m f	2	Farmer
616	j	Edwards, James	East half 13	7, H. R. S.	o m f	2	Farmer
674	j	Eyre, Silas	2	11, H. R. S.	t m f	2	Farmer
688	j	Elder, William J.	9	11, H. R. S.	o m f	5	Farmer
686		Fisher, Joseph	Parts 9 and 8	11, H. R. S.	o m f	5	Farmer
640	j	Forsyth, Ebenezer, jr.	South half 22	4, H. R. S.	t m f	2	Farmer
284		Fotheringham, Wm.	27 and north half 26	4, L. R. S.	o m f	4	Farmer
639		Forsyth, Ebenezer, sr.	14	8, H. R. S.	o m f	2	Farmer
297	j	Finlayson, James	24	5, L. R. S.	f m f	2	Farmer
285	j	Fotheringham, D.	27, & north half 26	4, L. R. S.	f m f	4	Farmer
642		Ferguson, David	1	9, H. R. S.	o m f	2	Farmer
607	j	Ferguson, David	8	7, H. R. S.	o m f	1	Farmer
286	j	Fotheringham, Thos.	27	4, L. R. S.	f m f	4	Farmer
604		Grummett, William	4	7, H. R. S.	o m f	2	Mason
283		Gordon, William	N. $\frac{1}{2}$ 25 and S. $\frac{1}{2}$ 26	4, L. R. S.	f m f	2	Farmer
301		Gemmell, James	26	5, L. R. S.	o m f	2	Farmer
282		Gordon, Alexander	South half 25	4, L. R. S.	o m f	2	Farmer
587	j	Grant, Alexander	10	6, H. R. S.	f m f	2	Farmer
622	j	Hannah, John	3	8, H. R. S.	f m f	1	Farmer
623		Hannah, William	3	8, H. R. S.	f m f	1	Farmer
316		Halliday, John	29	7, L. R. S.	f m f	2	Farmer
574		Hyslop, John	3 and East half 4	6, H. R. S.	o m f	1	Farmer
593		Houston, Samuel	13	6, H. R. S.	o m f	2	Farmer
272		Hulliston, John	South half 20	4, L. R. S.	f m f	2	Farmer
599		Hudson, Wm. sr.	2	7, H. R. S.	t m f	2	Farmer
600		Hudson, Colin	2	7, H. R. S.	t m f	2	Farmer
610		Hudson, W. J.	10	7, H. R. S.	t m f	2	Farmer
654		Hay, John	9	9, H. R. S.	f m f	2	Farmer
655		Hay, John S.	9	9, H. R. S.	f m f	2	Farmer
655		Hay, William S.	9	9, H. R. S.	f m t	2	Farmer
537	j	Ireland, Robert	14	4, H. R. S.	f m f	2	Farmer
650		Kennedy, Roderick	East half 7	9, H. R. S.	f m f	2	Farmer
656		Kelly, Peter	10	9, H. R. S.	o m f	2	Farmer
649		Kennedy, Neil	East half 7	9, H. R. S.	f m f	2	Farmer
651		Kennedy, Alex.	East half 10	8 and 9, H. R. S.	t m f	2	Farmer
662		Kinsman, William	2	10, H. R. S.	f m f	6	Farmer
570		Keating, John	North half 1	6, H. R. S.	f m f	2	Farmer
552		Kruse, William	3	5, H. R. S.	t m f	2	Farmer





No. on Roll.	Juror.	NAME.	No. of Lot or Part of Lot.	Concession or Street.	O. T. L. H. S. or F. O.	P. O.	Occupation.
576		Laidlaw, George	5	6, H. R. S.	o m f	2	Farmer
618	j	Love, John	14	7, H. R. S.	o m f	2	Farmer
564		Leatherland, Robert	11	5, H. R. S.	o m f	2	Farmer
609	j	Leatherland, Edgar	11	5, H. R. S.	f m f	2	Farmer
523	j	Murray, John	3	4, H. R. S.	t m f	2	Farmer
637	j	Moore, Isaac, jr.	West half 13	8, H. R. S.	f m f	2	Farmer
582	j	McKay, Peter	8	6, H. R. S.	f m f	2	Farmer
664	j	McKay, Eric	3	10, H. R. S.	f m f	2	Farmer
270		McKay, James	Part 19	4, L. R. S.	o m f	5	Farmer
268	j	McGonigle, George	18	4, L. R. S.	o m f	2	Farmer
266		McKay, George	17	4, L. R. S.	o m f	5	Farmer
661	j	McDonald, Duncan	1	10, H. R. S.	o m f	6	Farmer
663	j	McKay, Alexander	3	10, H. R. S.	o m f	6	Farmer
678		McDonald, Donald, sr.	West half 4	11, H. R. S.	o m f	6	Farmer
679	j	McDonald, Donald, jr.	West half 4	11, H. R. S.	f m f	6	Farmer
680		McKinnon, Donald	5	11, H. R. S.	o m f	6	Farmer
682	j	McKinnon, John	5	11, H. R. S.	f m f	6	Farmer
681	j	McKinnon, Angus	5	11, H. R. S.	f m f	6	Farmer
684		McGregor, Duncan	7	11, H. R. S.	o m f	6	Farmer
668	j	McMillan, Daniel	7 and south half 5	9 and 10, H. R. S.	f m f	6	Farmer
633		McTavish, James	11	8, H. R. S.	o m f	2	Farmer
629	j	McLaughlin, Peter	9	8, H. R. S.	o m f	2	Farmer
626		McKay, Peter	South half 6	8, H. R. S.	f m f	2	Farmer
625		McKay, John F.	W. $\frac{1}{2}$ 4 and E. $\frac{1}{2}$ 5	8, H. R. S.	o m f	2	Farmer
627		McLellan, John	7	8, H. R. S.	o m f	2	Farmer
597		McConnell, James	1	7, H. R. S.	o m f	2	Farmer
602		McNaughton, Wm.	Part 3	7, H. R. S.	o m f	2	Farmer
281		McKay, Robert	24	4, L. R. S.	f m f	2	Farmer
303		McKay, Malcolm	28	5, L. R. S.	f m f	2	Farmer
300		McKay, James	25	5, L. R. S.	t m f	2	Farmer
648		McCloy, John	East half 6	9, H. R. S.	o m f	2	Farmer
667		McCloy, David	6	10, H. R. S.	f m f	2	Farmer
647		McMillan, Hugh	4 and north half 5	9, H. R. S.	f m f	6	Farmer
565		McGavin, Henry	12	5, H. R. S.	t m f	2	Farmer
566		McGavin, John	12	5, H. R. S.	f m f	2	Farmer
269		McGonigle, Robert	18	4, L. R. S.	o m f	2	Farmer
635		McTavish, Duncan	11	8, H. R. S.	f m f	6	Farmer
634		McTavish, Alex.	11	8, H. R. S.	f m f	2	Farmer
271		McKay, William	Part 19	4, L. R. S.	f m f	5	Farmer
653	j	McKellar, Donald	West half 7 and 8	9, H. R. S.	f m f	1	Farmer
675	j	Pybus, Henry	3	11, H. R. S.	o m f	6	Farmer
563		Pickard, James	4	5, H. R. S.	o m f	2	Farmer
676	j	Pybus, William J.	3	11, H. R. S.	f m f	6	Farmer
576	j	Patrick, Montgomery	W. $\frac{1}{2}$ 4 and E. $\frac{1}{2}$ 5	6 and 7, H. R. S.	f m f	2	Farmer



No. on Roll.	Juror.	NAME.	No. of Lot or Part of Lot.	Concession or Street.	O. F. L. H. S. or F. S.	P. O.	Occupation.
665		Riley, Benjamin	4	10, H. R. S.	o m f	6	Farmer
296		Ross, William	Part 25	5, L. R. S.	o m f	1	Laborer
562		Reinkie, John	10	4 and 5, H. R. S.	o m f	2	Farmer
563	j	Reinkie, George	10	4 and 5, H. R. S.	f m f	2	Farmer
666	j	Riley, John	4	10, H. R. S.	o m f	6	Farmer
265	j	Sinclair, William	16	4, L. R. S.	f m f	5	Farmer
274	j	Sproat, Alexander	S. ½ 21 and part 20	4, L. R. S.	o m f	5	Farmer
671	j	Sinclair, Alexander	10	10, H. R. S.	f m f	5	Farmer
672	j	Sinclair, William	1	11, H. R. S.	o m f	6	Farmer
624	j	Sillery, William J.	East half 4	8, H. R. S.	o m f	1	Farmer
586		Story, Andrew	West half 9	6, H. R. S.	o m f	2	Farmer
606	j	Story, John	7	7, H. R. S.	o m f	2	Farmer
612	j	Scott, William	11	7, H. R. S.	o m f	2	Farmer
613	j	Scott, Matthew	12	7, H. R. S.	o m f	2	Farmer
525		Sproat, John, jr.	W. ½ 5 & other prem.	4, H. R. S.	o m f	2	Farmer
591		Shillinglaw, Thomas	12	6, H. R. S.	o m f	2	Teacher
519		Sholdice, Leonard	1	4, H. R. S.	o m f	1	Farmer
524	j	Sproat, James	W. ½ 4 and E. ½ 5	4, H. R. S.	o m f	2	Farmer
526	j	Sproat, Thomas	6	4, H. R. S.	o m f	2	Farmer
273		Sproat, James	Part 20	4, L. R. S.	o m f	5	Rt farmer
608		Strong, John	9	7, H. R. S.	t m f	2	Farmer
520		Sholdice, John	1	4, H. R. S.	f m f	1	Farmer
584		Strong, William	East half 9	6, H. R. S.	f m f	2	Farmer
585		Strong, Robert	East half 9	6, H. R. S.	f m f	2	Farmer
589	j	Strong, George, jr.	11	6, H. R. S.	f m f	2	Farmer
630		Sproat, George	Part 10	8, H. R. S.	f m f	2	Hotel-keep.
683		Templeton, John	East half 5 and 6	10 and 11, H. R. S.	o m f	6	Farmer
595		Taylor, James	East half 14	6, H. R. S.	o m f	2	Farmer
594		Taylor, John	East half 14	6, H. R. S.	f m f	2	Farmer
527		Tyndall, Anthony	7	4, H. R. S.	o m f	2	Farmer
528		Tyndall, Henry	7	4, H. R. S.	f m f	2	Farmer
670	j	Tremeer, John	West half 9	10, H. R. S.	f m f	5	Farmer
614		Torry, Alexander	12	7, H. R. S.	t m f	2	Laborer
659	j	Upshall, Franklin	Part 11	9, H. R. S.	f m f	1	Farmer
677	j	Whiteman, John	East half 4	11, H. R. S.	f m f	6	Farmer
657		Wren, David	11	9, H. R. S.	f m f	2	Farmer
644		Watson, James, jr.	2	9, H. R. S.	f m f	6	Farmer
643		Watson, James, sr.	2	9, H. R. S.	f m f	6	Farmer
550	j	Williams, Patriok	1	5, H. R. S.	f m f	2	Farmer
549	j	Williams, Michael	1	5, H. R. S.	o m f	2	Farmer
579	j	Wright, William, sr.	7	6, H. R. S.	t m t	2	Farmer
304		Walker, John	East half 29 and 30	5, H. R. S.	o m f	4	Farmer
522		Wallace, William	2	4, H. R. S.	f m f	2	Farmer
580		Wright, William, jr.	7	5, H. R. S.	t m f	2	Farmer
305		Walker, George	East half 29 and 30	5, L. R. S.	f m f	4	Farmer
645	j	Watson, John A.	2	9, H. R. S.	f m f	6	Farmer

No. on Roll.

617  
601  
588

688

299

57  
57

62

53

64  
58

68

2  
3  
6

2

5  
6

6  
5

## PART 2.—List of Persons Entitled to Vote at Municipal Elections Only.

No. on Roll.	Juror.	NAME.	No. of Lot or Part of Lot.	Concession or Street.	O. 2. L. H. S. or F. S.	P. O.	Occupation.
617		Clark, Richard	West half 13	7, H. R. S.	Owner	1	Grocer
601		Connolly, Thomas	2	7, H. R. S.	Owner	2	Farmer
588		Chesney, Mrs. W. J.	10	6, H. R. S.	Owner	2	Widow
689		Davey, William	1	12, H. R. S.	Owner	6	Farmer
298		Finlayson, Mrs. J.	24	5, L. R. S.	Owner	2	Widow
572		Gormley, Joseph	South half 1	6, H. R. S.	F		Farmer
571		Gormley, Charles, sr.	South half 1	6, H. R. S.	Owner		Farmer
621		Hanna, Moses	3	8, H. R. S.	Owner	1	
536		Ireland, Mrs. Wm.	14	4, H. R. S.	Owner	2	Widow
641		Kyle, William	Part 10	8, H. R. S.	Owner	2	Hotel-keep.
581		Keefe, Michael	6	7, H. R. S.	Owner	1	Rt farmer
687		Latta, Edward	Part 10	11, H. R. S.	Owner		Mason
267		McKay, Marion	17	4, L. R. S.	Owner	5	Spinster
310		McLean, Bella	29	6, L. R. S.	Owner	2	Widow
690		McCloy, William	2	11, H. R. S.	Owner	7	Agent
299		Ross, Jessie	Part 25	5, L. R. S.	Owner	2	Widow
583		Strong, Mrs. G.	East half 9	6, H. R. S.	Owner	2	Widow
652		Story, George	West half 6	9, H. R. S.	Owner		
658		Wren, David, sr.	11	9, H. R. S.	F	2	Farmer
521		Wallace, Annie	2	4, H. R. S.	Owner	2	Widow

PA

No. on  
Roll

659

60

53

61

55

66

57

58

5

6

6

6

6

=

V

POLLING SUB-DIVISION NO. 4

PART 3.—List of persons entitled to vote at elections to the Legislative Assembly

No. on Roll.	Jurat.	NAME.	No. of Lot or Part of Lot.	Concession or Street.	O. 2. I. H. S. or P. S.	P. O.	Occupation.
659½		Boa, Paul	6	9, H. R. S.	m f	6	Laborer
603		Cumming, John	Part 3	7, H. R. S.	m f	2	Laborer
531		Daly, Christopher	11	4, H. R. S.	m f	2	Laborer
611		Hudson, George	10	7, H. R. S.	m f	2	Laborer
598		Keating, John, sr.	1	7, H. R. S.	m f	2	Laborer
669		Moir, Alexander	7	10, H. R. S.	m f	6	Laborer
577		Manson, James	5	6, H. R. S.	m f	2	Laborer
559		McKenzie, John	6	5, H. R. S.	m f	2	Laborer
592		Park, Alexander	12	6, H. R. S.	m f	2	Laborer
605		Quinlan, John	West half 4	7, H. R. S.	m f	2	Laborer
615		Torry, Robert	12	7, H. R. S.	m f	2	Laborer
673		Tremeer, George	1	11, H. R. S.	m f	6	Laborer
685		Workman, William	8	10, H. R. S.	m f	6	Laborer

**TOTAL VOTERS**

	Polling Division No. 1	Polling Division No. 2	Polling Division No. 3	Polling Division No. 4
Voters in Part 1—	161	154	178	166
“ “ “ 2—	48	41	25	20
“ “ “ 3—	37	29	14	13
	<u>246</u>	<u>224</u>	<u>217</u>	<u>199</u>

Total number of Voters on roll for 1899 is 876.  
 Total number of persons eligible to serve on the Jury is 461.

The Voters' List for this Municipality was first posted up in my office at Tucker-smith, on the 29th day of August, 1899.

A. G. SMILLIE, Clerk.

