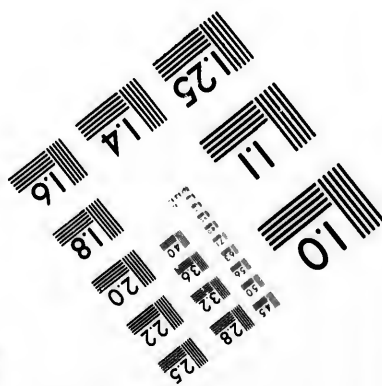
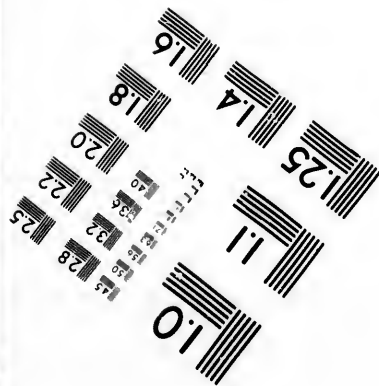
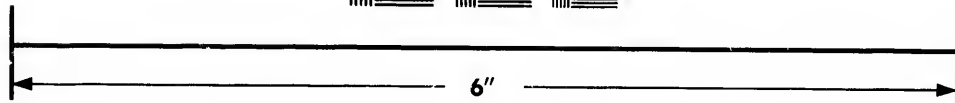
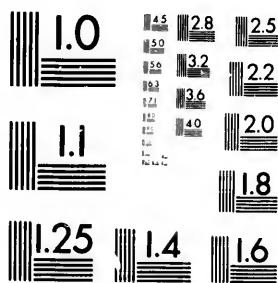


**IMAGE EVALUATION
TEST TARGET (MT-3)**



**Photographic
Sciences
Corporation**

23 WEST MAIN STREET
WEBSTER, N.Y. 14580
(716) 872-4503

15 28 25
18 32 22
19 36 20
18

**CIHM/ICMH
Microfiche
Series.**

**CIHM/ICMH
Collection de
microfiches.**

11
10
17



Canadian Institute for Historical Microreproductions

Institut canadien de microreproductions historiques

1980

Technical and Bibliographic Notes/Notes techniques et bibliographiques

The Institute has attempted to obtain the best original copy available for filming. Features of this copy which may be bibliographically unique, which may alter any of the images in the reproduction, or which may significantly change the usual method of filming, are checked below.

L'Institut a microfilmé le meilleur exemplaire qu'il lui a été possible de se procurer. Les détails de cet exemplaire qui sont peut-être uniques du point de vue bibliographique, qui peuvent modifier une image reproduite, ou qui peuvent exiger une modification dans la méthode normale de filmage sont indiqués ci-dessous.

- | | |
|--|--|
| <input type="checkbox"/> Coloured covers/
Couverture de couleur | <input type="checkbox"/> Coloured pages/
Pages de couleur |
| <input type="checkbox"/> Covers damaged/
Couverture endommagée | <input type="checkbox"/> Pages damaged/
Pages endommagées |
| <input type="checkbox"/> Covers restored and/or laminated/
Couverture restaurée et/ou pelliculée | <input type="checkbox"/> Pages restored and/or laminated/
Pages restaurées et/ou pelliculées |
| <input type="checkbox"/> Cover title missing/
Le titre de couverture manque | <input checked="" type="checkbox"/> Pages discoloured, stained or foxed/
Pages décolorées, tachetées ou piquées |
| <input type="checkbox"/> Coloured maps/
Cartes géographiques en couleur | <input type="checkbox"/> Pages detached/
Pages détachées |
| <input type="checkbox"/> Coloured ink (i.e. other than blue or black)/
Encre de couleur (i.e. autre que bleue ou noire) | <input type="checkbox"/> Showthrough/
Transparence |
| <input type="checkbox"/> Coloured plates and/or illustrations/
Planches et/ou illustrations en couleur | <input type="checkbox"/> Quality of print varies/
Qualité inégale de l'impression |
| <input type="checkbox"/> Bound with other material/
Relié avec d'autres documents | <input type="checkbox"/> Includes supplementary material/
Comprend du matériel supplémentaire |
| <input type="checkbox"/> Tight binding may cause shadows or distortion
along interior margin/
La reliure serrée peut causer de l'ombre ou de la
distortion le long de la marge intérieure | <input type="checkbox"/> Only edition available/
Seule édition disponible |
| <input type="checkbox"/> Blank leaves added during restoration may
appear within the text. Whenever possible, these
have been omitted from filming/
Il se peut que certaines pages blanches ajoutées
lors d'une restauration apparaissent dans le texte,
mais, lorsque cela était possible, ces pages n'ont
pas été filmées. | <input type="checkbox"/> Pages wholly or partially obscured by errata
slips, tissues, etc., have been refilmed to
ensure the best possible image/
Les pages totalement ou partiellement
obscurcies par un feuillet d'errata, une pelure,
etc., ont été filmées à nouveau de façon à
obtenir la meilleure image possible. |
| <input type="checkbox"/> Additional comments:
Commentaires supplémentaires: | |

This item is filmed at the reduction ratio checked below/
Ce document est filmé au taux de réduction indiqué ci-dessous.

10X	12X	14X	16X	18X	20X	22X	24X	26X	28X	30X	32X
						✓					

The copy filmed here has been reproduced thanks to the generosity of:

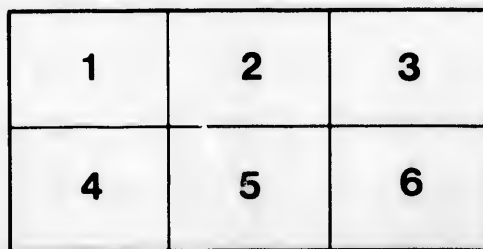
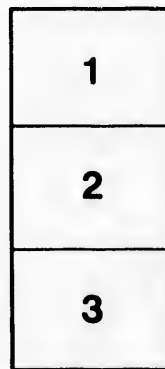
Library Division
Provincial Archives of British Columbia

The images appearing here are the best quality possible considering the condition and legibility of the original copy and in keeping with the filming contract specifications.

Original copies in printed paper covers are filmed beginning with the front cover and ending on the last page with a printed or illustrated impression, or the back cover when appropriate. All other original copies are filmed beginning on the first page with a printed or illustrated impression, and ending on the last page with a printed or illustrated impression.

The last recorded frame on each microfiche shall contain the symbol \rightarrow (meaning "CONTINUED"), or the symbol ∇ (meaning "END"), whichever applies.

Maps, plates, charts, etc., may be filmed at different reduction ratios. Those too large to be entirely included in one exposure are filmed beginning in the upper left hand corner, left to right and top to bottom, as many frames as required. The following diagrams illustrate the method:



L'exemplaire filmé fut reproduit grâce à la générosité de:

Library Division
Provincial Archives of British Columbia

Les images suivantes ont été reproduites avec le plus grand soin, compte tenu de la condition et de la netteté de l'exemplaire filmé, et en conformité avec les conditions du contrat de filmage.

Les exemplaires originaux dont la couverture en papier est imprimée sont filmés en commençant par le premier plat et en terminant soit par la dernière page qui comporte une empreinte d'impression ou d'illustration, soit par le second plat, selon le cas. Tous les autres exemplaires originaux sont filmés en commençant par la première page qui comporte une empreinte d'impression ou d'illustration et en terminant par la dernière page qui comporte une telle empreinte.

Un des symboles suivants apparaîtra sur la dernière image de chaque microfiche, selon le cas: le symbole \rightarrow signifie "A SUIVRE", le symbole ∇ signifie "FIN".

Les cartes, planches, tableaux, etc., peuvent être filmés à des taux de réduction différents. Lorsque le document est trop grand pour être reproduit en un seul cliché, il est filmé à partir de l'angle supérieur gauche, de gauche à droite, et de haut en bas, en prenant le nombre d'images nécessaire. Les diagrammes suivants illustrent la méthode.

NWp
821
M399;
c.2

In Memory

—OF—

SIR JAS. DOUGLAS

K. C. B.

REV. GEORGE MASON, M. A.

NWp
821
M399i
c.2



Archives
of
British Columbia
I. W. POWELL
COLLECTION

"Integer Vita Scelerisque purus."

HORACE, ODES: Book I.

Deem not the heroes of the elder world
Alone may claim our tributary lay!
In ev'ry clime, in ev'ry age, shine forth
Some bright examples of heroic worth,
Friends of the people, dauntless pioneers,
Leading the van of progress, while they point--
Uplifted heavenward--the hand of faith,
And such wer't thou, renowned Douglas! Thou
Whose name, familiar as a household word,
Shall flourish through the centuries to come,--
Not, as in olden time'twas wont to sound
In thy far Scottish home, a name of dread,
But leaving happier memories in the soul
Of truth and justice, honesty and love.
Each common object of our daily sight--
Village or highway, vessel, wharf or mine,
Named by a grateful people after thee;
Shall oft recall that once commanding form
Of noble stature, and of courtly grace,
Such as in days of chivalry had been
The champion in the tournament or fight,
And won the honors of the golden spurs--
Of: shall we think of that paternal rule,
Kind in its firmness and in kindness firm--
That rule which averted the native tribes to peace,
Yet made them love the power they must obey:
Or we may read the tale of justice done,
Where grasping avarice would have worked the wrong,
Of riot quelled, and order still preserv'd
In troublous times, of foster'd industries,
And wise enactments for the public good;
Till proudly we may turn th' historic page,
Emblazoned with the record of that day,
When England's Gracious Majesty bestow'd
Th' insignia of knighthood's ancient rank
On him her Viceroy and Columbia's friend,
Blest is the memory of the faithful dead!
Therefore on his the benediction falls,
Who e'er obey'd the instincts of an heart
Honest and good, from baser motives pure.
No vain despiser of the heavenly word
He paid due homage to the King of Kings,
And humbly worshipp'd where his conscience led.
The widow and the orphan found in him
A ready helper in the time of need;
Thus did his prayers and alms united rise
Before the throne of charity above,
As true memorials of a living faith,
To be requited in that awful day,
When th' Incarnate Judge shall come again
And recognize each deed of mercy wrought
For one of His, as render'd to Himself.
Illustrious ruler of our Infant State!
Thou need'st no monument of man's device,
Nor sculptured effigy nor marble tomb,
Graven with flat'ring words of fulsome praise
To ensure thy deathless fame! Thy epitaph
Is written in a people's upward growth--
Thy works do follow thee beyond the grave.
May He, the Sovereign Lord of heaven and earth,
Grant to thy spirit now His promised peace,
Light and refreshment and eternal rest.

