



EXPANDED
METAL.

FENCING,
WINDOW GUARDS,
LATTICE, BORDERS,
TREE GUARDS.

Expanded Metal
and
Fireproofing Co.,
Limited



OFFICES :

Nos. 98-100 KING ST. WEST,
TORONTO.

FACTORY :

Nos. 23-25-27 PEARL STREET,
TORONTO.

MONTREAL AGENCY :

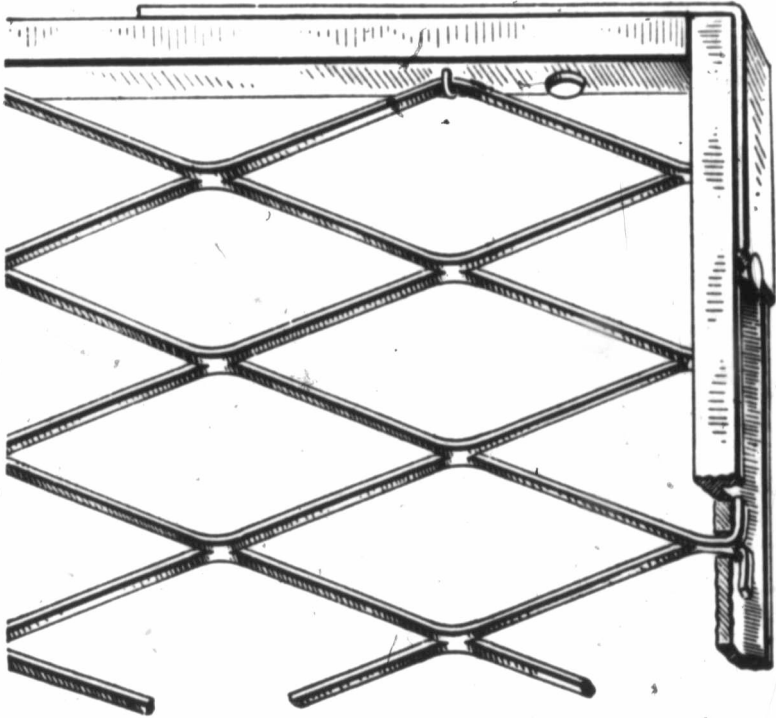
1833 NOTRE DAME STREET.

Expanded Metal

is so called because cut and expanded from Bessemer sheet steel of high grade. Depending upon the use, Expanded Metal is cut from different thicknesses of steel, and by altering the knives, different sized meshes are produced. The finished network of metal is most attractive in appearance, the meshes never varying in size or shape. This cheap and popular material is not woven, but of one piece throughout. Owing to its low cost and unapproached strength, its superiority over all classes of wire work is apparent. Being jointless, it follows that the sheets of Expanded Metal may be cut at will without fear of unravelling, or seriously damaging the integrity of the whole.

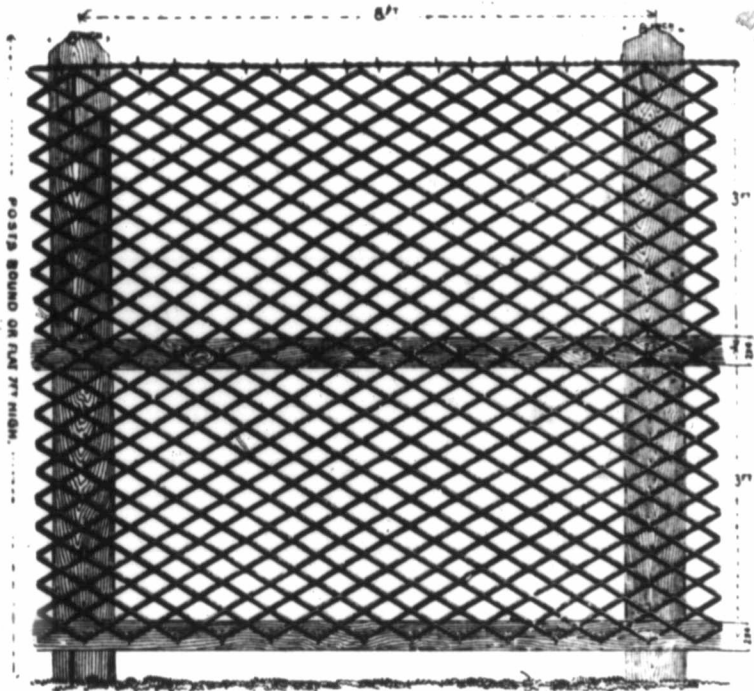
Expanded Metal

has found richly deserved favor in the United States and Europe, and its adaptability to a hundred uses has rapidly made it a talked-of article and a "seller" from the start.

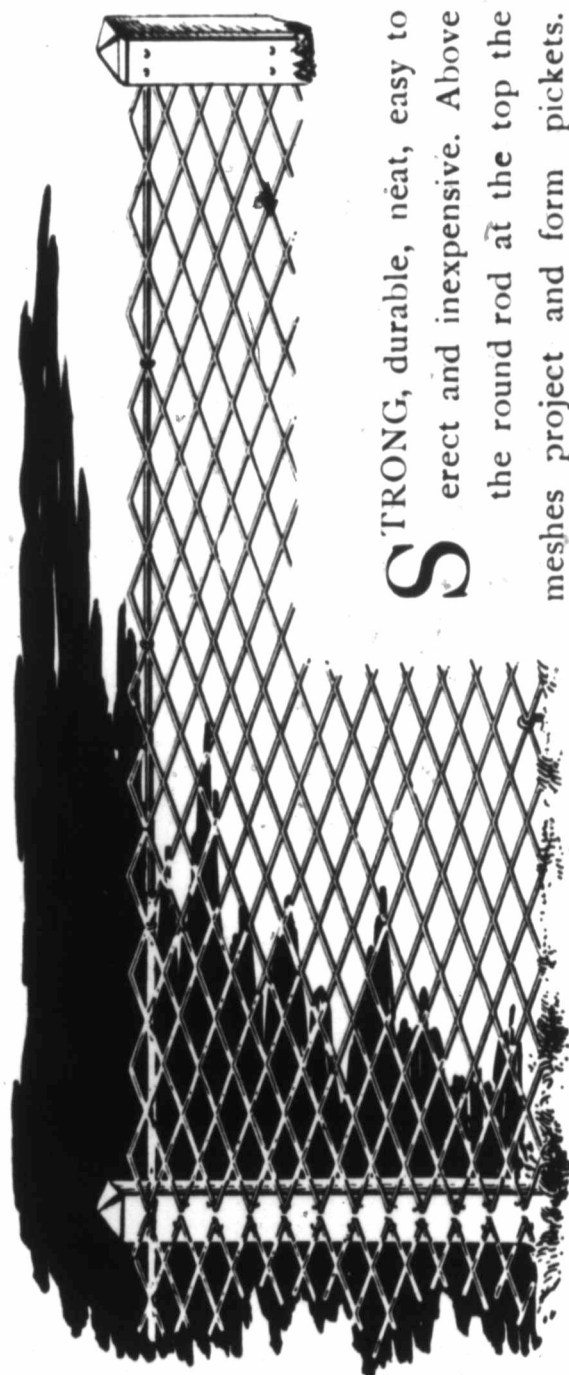


THE ABOVE CUT gives a good idea of Expanded Metal, and shows also how it can be neatly and strongly enclosed in a square frame formed of channel iron for fencing, window guards, and other purposes.

Another favorite method of framing is by using round iron, about which the strands of the Expanded Metal sheet are neatly clinched.



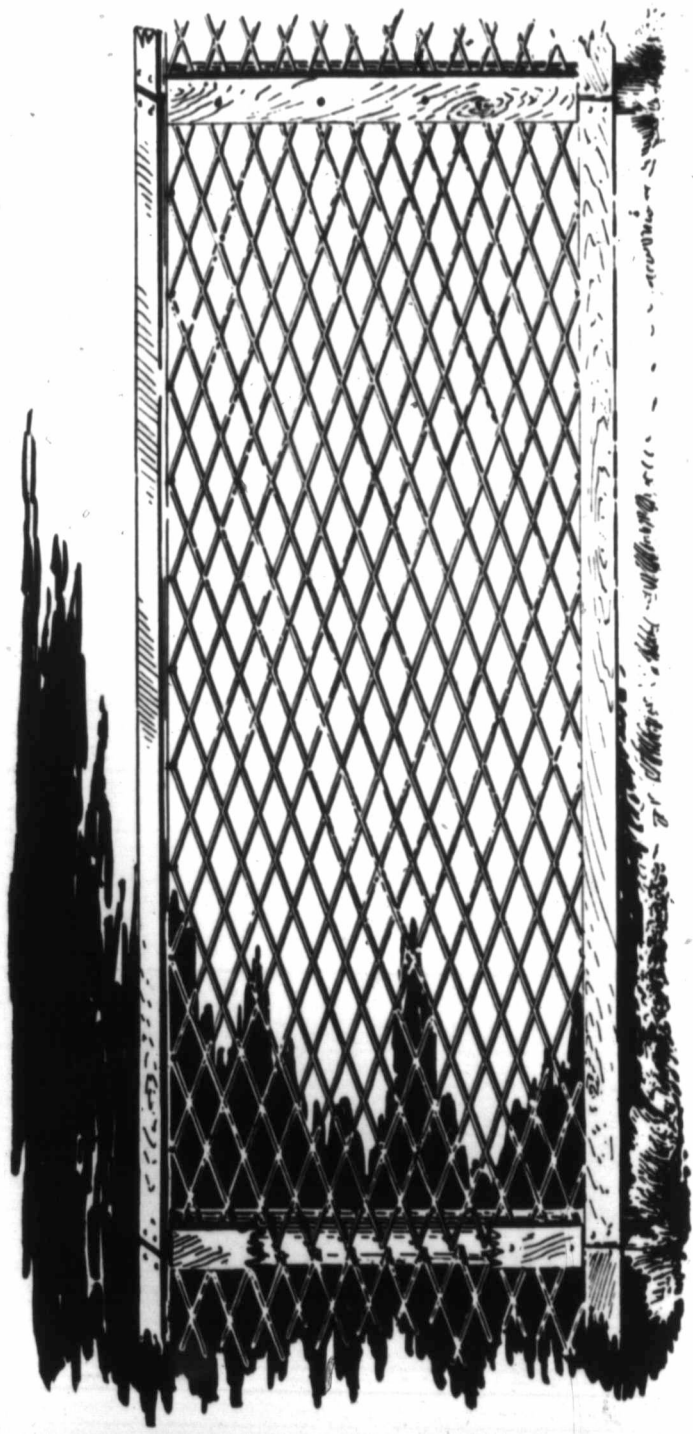
WE ILLUSTRATE HERE a superior fence for railroad, orchard or cemetery needs. We provide the Expanded Metal Sheets in 8 feet lengths, and these, if stapled securely to a simple framing, with barb wire at top, give for its strength the cheapest fence that can be procured for places where intrusions are to be guarded against. The height shown is 6 feet, but anything up to 8 feet is available without splicing. We provide the Expanded Metal sheets. See General Price List, page 16.



STRONG, durable, neat, easy to erect and inexpensive. Above the round rod at the top the meshes project and form pickets.

Posts 8ft. centres. We furnish the Expanded Metal panel complete.

See General Price List, page 16.

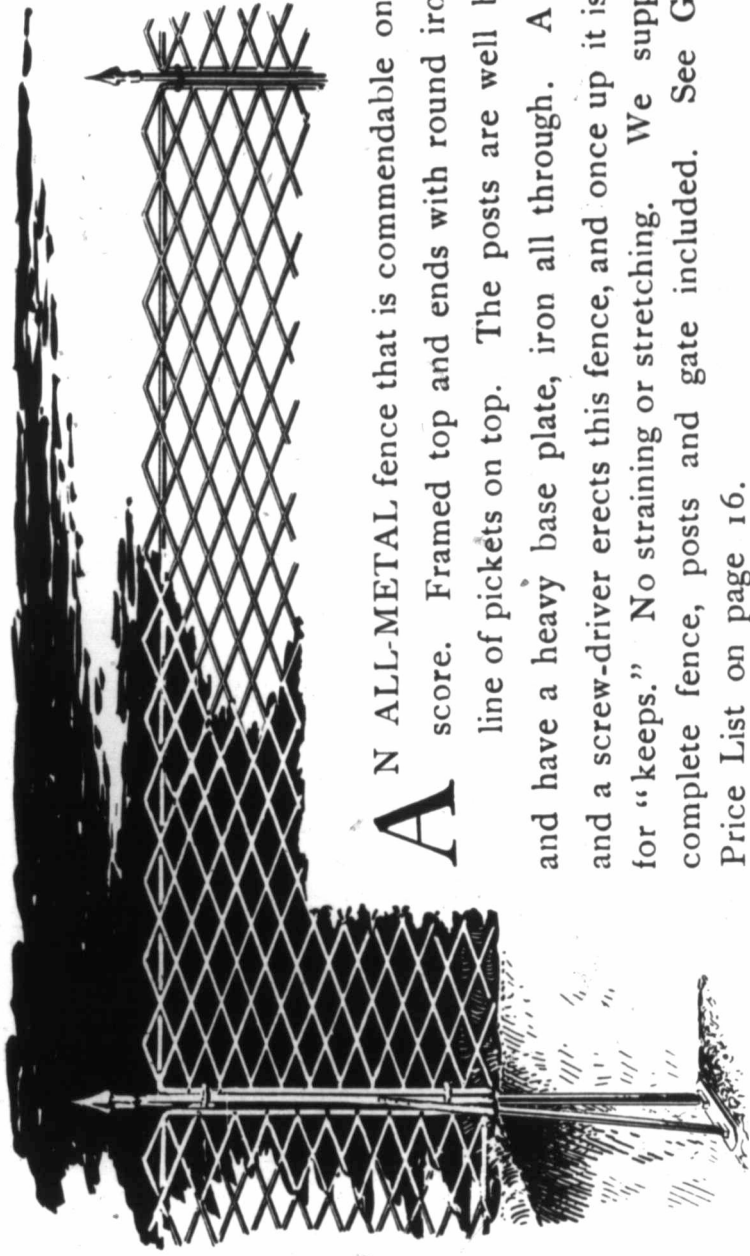


FOR A STRONG, tasteful, low-cost fence—suitable for front yards—nothing can equal that sketched on page 6. A board or light ornamental piece is run top and bottom. The Expanded Metal is stapled on the posts at intervals and a batten covers the connections. The framing may be as elaborate as desired. Admirable for enclosing orchards, poultry yards, barn yards, etc., being strong enough to turn all kinds of stock. For prices of the Expanded Metal sheets see General Price List, page 16.

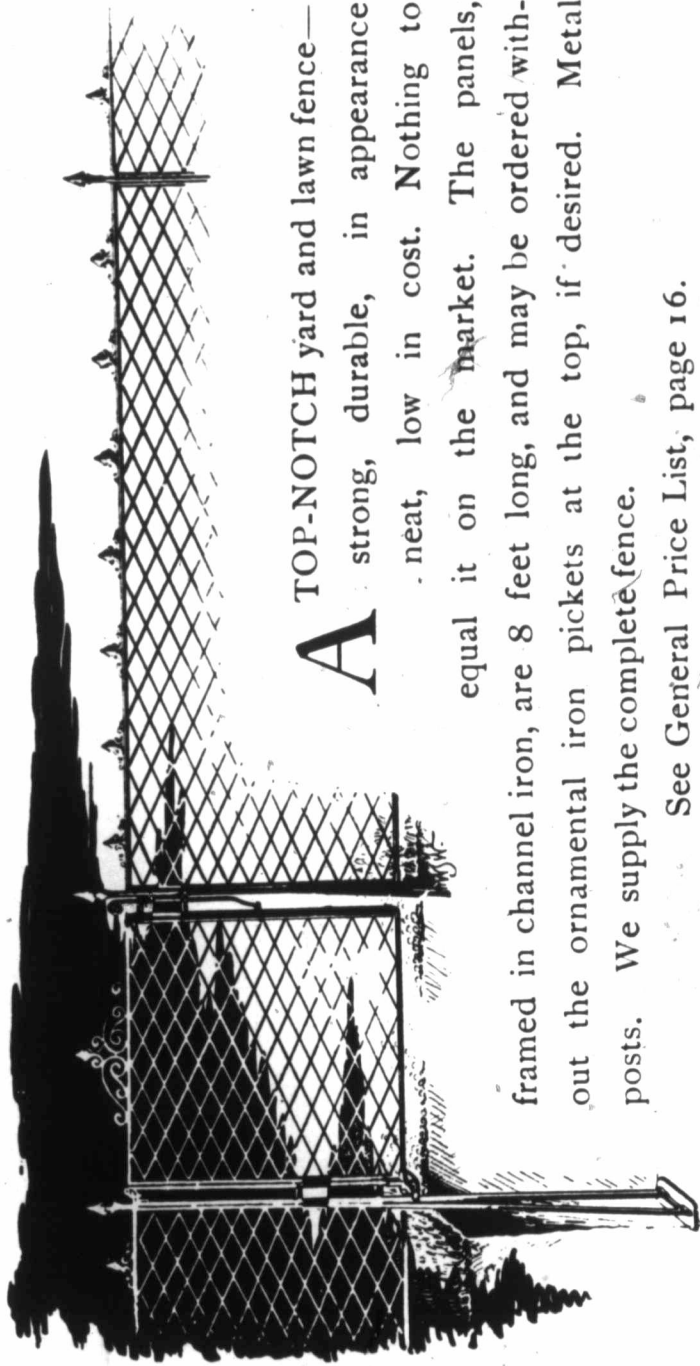


Gates

WE SUPPLY single or double gates to match the all-metal fencing shown on pages 8 and 9, all neatly and strongly built—with hinges, latch, etc., complete. All particulars in General Price List, page 16.

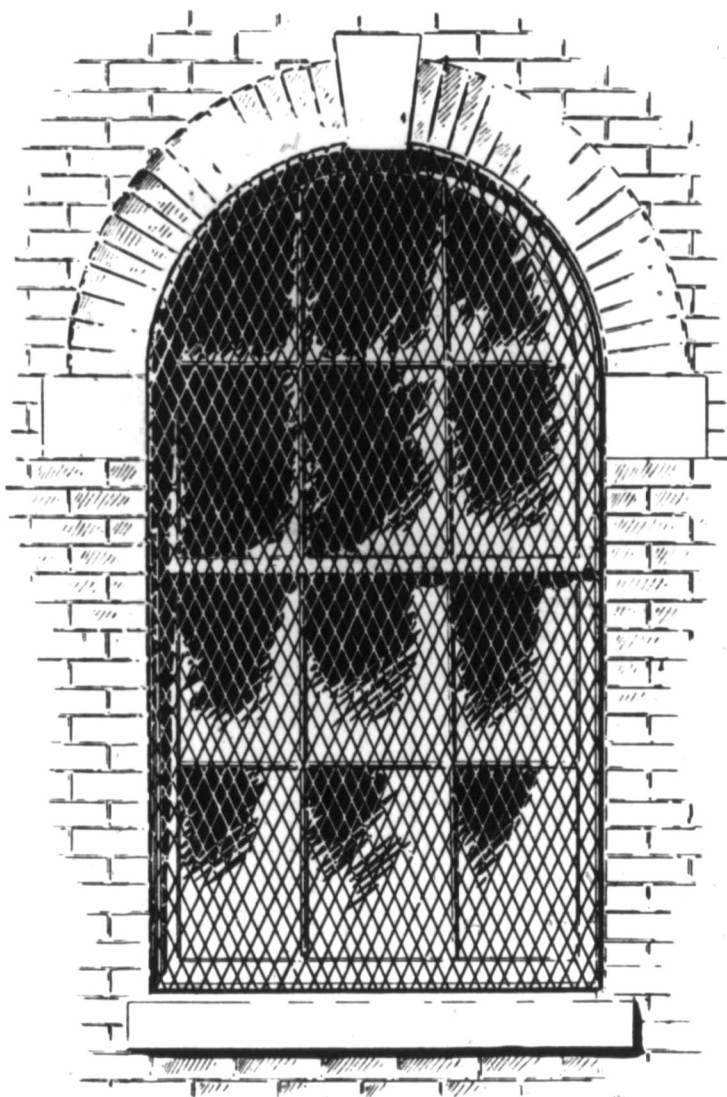


AN ALL-METAL fence that is commendable on every score. Framed top and ends with round iron. A line of pickets on top. The posts are well braced and have a heavy base plate, iron all through. A spade and a screw-driver erects this fence, and once up it is there for "keeps." No straining or stretching. We supply the complete fence, posts and gate included. See General Price List on page 16.



A TOP-NOTCH yard and lawn fence—
strong, durable, in appearance
neat, low in cost. Nothing to
equal it on the market. The panels,
framed in channel iron, are 8 feet long, and may be ordered with-
out the ornamental iron pickets at the top, if desired. Metal
posts. We supply the complete fence.

See General Price List, page 16.



Window Guards

PRESENTING greater strength and obstructing a minimum of light, Expanded Metal is especially adapted for screen purposes over window openings. Our sketch shows a round-topped guard stapled to the sash frame, but we cut them to any shape. Expanded Metal is the handiest material in its line. There are no separate wires to unweave; it is easy to trim to any size or shape needed; it can be quickly removed and replaced as often as wanted. Nothing is to be bought so cheap, and it lasts for ever. We sell more Expanded Metal for use with wood stops for window guards, trellises in verandahs, etc., and for general lattice work, than for almost any other purpose.



Note particularly that the round iron or channel iron borders, although adding to strength, are not necessary, as the Expanded Metal Sheets may be stapled directly to the wood frame of the window, and in this way a safe and cheap guard is obtained.



Tree Guards

AFTER appearance, strength and durability counts in tree guards. Park superintendents and others vouch for the all-round merits of Expanded Metalguards, and have found very many other purposes in gardens, etc., which our material best serves.

● ●

GARDEN REQUISITES

Hot House Guards.

Arbors.

Trellises.

Lattice Work.

Summer Houses.

Grass Margins.



Expanded Metal Walk Borders and
Grass Margins.

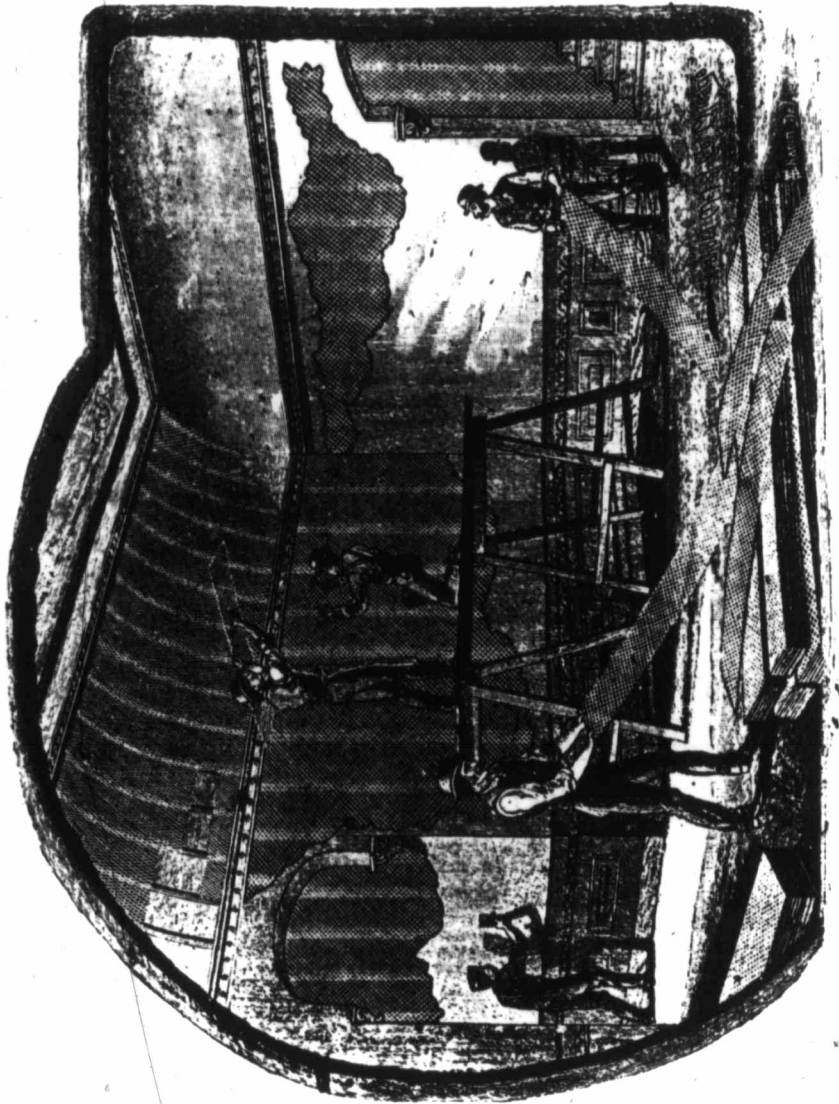
● ● ●

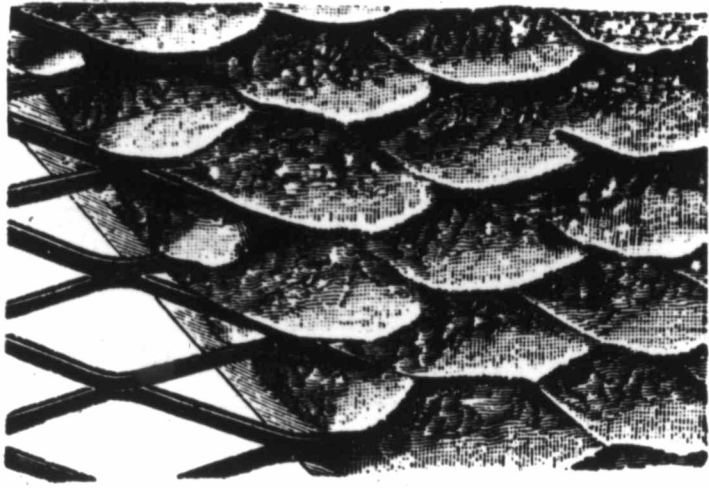
Other Uses

●

PARTICULAR ATTENTION is called to
the following popular uses of Expanded
Metal, not elsewhere mentioned :

**RAILINGS FOR COUNTERS AND DESKS,
RAILINGS FOR STAIRS AND GALLERIES,
OPEN PARTITIONS, SUMMER DOORS,
OPEN NETWORK SIGNS,
TELLERS' CAGES,
ELEVATOR CAGES, SKYLIGHT GUARDS,
STALL GUARDS, POULTRY COOPS,
SIFTING SCREENS, DOOR MATS,
WASTE PAPER BASKETS,
WAGGON GUARDS.**





Expanded Metal Lath gives a perfect Key.

Expanded Metal Lath

EXPANDED Metal Lathing is preferable to all other metallic varieties, whether punched or woven, because its meshes are so formed that the plaster makes a perfect key. The steel strands are completely embedded both in front and rear. No ordinary amount of wetting or jarring alters the position of the plaster in the least.

Cornices of any shape are made by simply bending the lath to the pattern desired; it is stiff enough to retain its form.

Expanded Metal Lath is made of heavy steel, and is rigid; it needs no stretching and does not shrink, allows no cracking of walls or ceilings, is easily put on, and dispenses with furring strips. Quality and results considered, it is cheapest.

Price 25c. per square yard f.o.b. Toronto.
Discount according to quantity.

General Price List

EXPANDED METAL For Fencing, Screens and Window Guards, Etc., Etc.

Unframed Sheets

$\frac{1}{2}$ in. mesh, No. 24 gauge steel, 6c. per sq. ft.
1 " " " 18 " 9c. "
2 " " " 14 " 9c. "
3 " " " 10 " 9c. "

Add 1c. per sq. ft. for painting.

$\frac{3}{8}$ in. round iron frame 6c. per running foot for iron used.

$\frac{3}{4}$ in. channel iron frame, 12c. per running foot for metal used.

$\frac{3}{4}$ in. channel iron frame, 15c. per running foot when channel capped.

FENCING SPECIALS

Picket tops, small size, tasteful, 5c. each.

Picket tops, large size, very neat and attractive, 10c. each.

Wrought iron posts, \$1.10 each.

Cast iron posts, price according to design.

Gates, single, when finished with $\frac{3}{8}$ in. round iron, including hinges, latch, etc., complete, \$5.00, (4 ft. wide and not more than 4 ft. high).

Gates, double, finished same way, complete, \$13.00, (8 ft. wide and not more than 4 ft. high).

Gate, single, using channel instead of $\frac{3}{8}$ in. round, complete, \$8.00.

Gate, double, using channel iron instead of $\frac{3}{8}$ in. round iron, complete, \$20.00.

Additional ornament on gate or fence, price according to design,