

**CIHM  
Microfiche  
Series  
(Monographs)**

**ICMH  
Collection de  
microfiches  
(monographies)**



**Canadian Institute for Historical Microreproductions / Institut canadien de microreproductions historiques**

**© 2000**

## Technical and Bibliographic Notes / Notes techniques et bibliographiques

The Institute has attempted to obtain the best original copy available for filming. Features of this copy which may be bibliographically unique, which may alter any of the images in the reproduction, or which may significantly change the usual method of filming are checked below.

- Coloured covers / Couverture de couleur
- Covers damaged / Couverture endommagée
- Covers restored and/or laminated / Couverture restaurée et/ou pelliculée
- Cover title missing / Le titre de couverture manque
- Coloured maps / Cartes géographiques en couleur
- Coloured ink (i.e. other than blue or black) / Encre de couleur (i.e. autre que bleue ou noire)
- Coloured plates and/or illustrations / Planches et/ou illustrations en couleur
- Bound with other material / Relié avec d'autres documents
- Only edition available / Seule édition disponible
- Tight binding may cause shadows or distortion along interior margin / La reliure serrée peut causer de l'ombre ou de la distorsion le long de la marge intérieure.
- Blank leaves added during restorations may appear within the text. Whenever possible, these have been omitted from filming / Il se peut que certaines pages blanches ajoutées lors d'une restauration apparaissent dans le texte, mais, lorsque cela était possible, ces pages n'ont pas été filmées.
- Additional comments / Commentaires supplémentaires:

L'Institut a microfilmé le meilleur exemplaire qu'il lui a été possible de se procurer. Les détails de cet exemplaire qui sont peut-être uniques du point de vue bibliographique, qui peuvent modifier une image reproduite, ou qui peuvent exiger une modification dans la méthode normale de filmage sont indiqués ci-dessous.

- Coloured pages / Pages de couleur
- Pages damaged / Pages endommagées
- Pages restored and/or laminated / Pages restaurées et/ou pelliculées
- Pages discoloured, stained or foxed / Pages décolorées, tachetées ou piquées
- Pages detached / Pages détachées
- Showthrough / Transparence
- Quality of print varies / Qualité inégale de l'impression
- Includes supplementary material / Comprend du matériel supplémentaire
- Pages wholly or partially obscured by errata slips, tissues, etc., have been refilmed to ensure the best possible image / Les pages totalement ou partiellement obscurcies par un feuillet d'errata, une pelure, etc., ont été filmées à nouveau de façon à obtenir la meilleure image possible.
- Opposing pages with varying colouration or discolorations are filmed twice to ensure the best possible image / Les pages s'opposant ayant des colorations variables ou des décolorations sont filmées deux fois afin d'obtenir la meilleure image possible.

This item is filmed at the reduction ratio checked below /  
Ce document est filmé au taux de réduction indiqué ci-dessous.

	10x		14x		18x		22x		26x		30x	
							<input checked="" type="checkbox"/>					
	12x		16x		20x		24x		28x		32x	

The copy filmed here has been reproduced thanks to the generosity of:

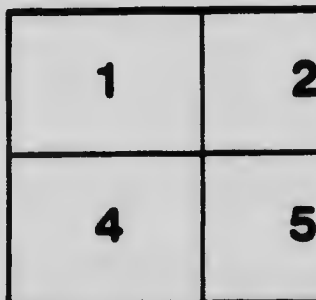
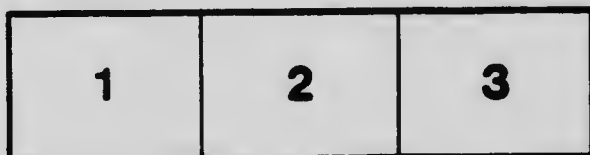
Archives of Ontario  
Toronto

The images appearing here are the best quality possible considering the condition and legibility of the original copy and in keeping with the filming contract specifications.

Original copies in printed paper covers are filmed beginning with the front cover and ending on the last page with a printed or illustrated impression, or the back cover when appropriate. All other original copies are filmed beginning on the first page with a printed or illustrated impression, and ending on the last page with a printed or illustrated impression.

The last recorded frame on each microfiche shell contain the symbol  $\rightarrow$  (meaning "CONTINUED"), or the symbol  $\nabla$  (meaning "END"), whichever applies.

Maps, plates, charts, etc., may be filmed at different reduction ratios. Those too large to be entirely included in one exposure are filmed beginning in the upper left hand corner, left to right and top to bottom, as many frames as required. The following diagrams illustrate the method:



L'exemplaire filmé fut reproduit grâce à la générosité de:

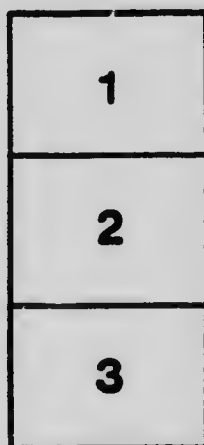
Archives publiques de l'Ontario  
Toronto

Les images suivantes ont été reproduites avec le plus grand soin, compte tenu de la condition et de la netteté de l'exemplaire filmé, et en conformité avec les conditions du contrat de filmage.

Les exemplaires originaux dont la couverture en papier est imprimée sont filmés en commençant par le premier plat et en terminant soit par la dernière page qui comporte une empreinte d'impression ou d'illustration, soit par le second plat, selon le cas. Tous les autres exemplaires originaux sont filmés en commençant par la première page qui comporte une empreinte d'impression ou d'illustration et en terminant par la dernière page qui comporte une telle empreinte.

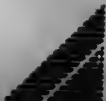
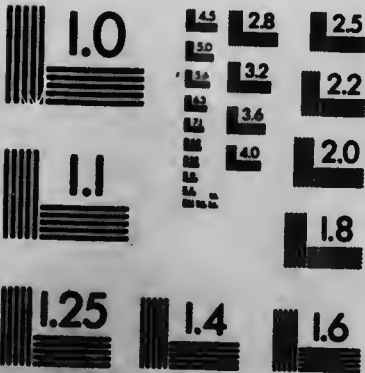
Un des symboles suivants apparaîtra sur la dernière image de chaque microfiche, selon le cas: le symbole  $\rightarrow$  signifie "A SUIVRE", le symbole  $\nabla$  signifie "FIN".

Les cartes, planches, tableaux, etc., peuvent être filmés à des taux de réduction différents. Lorsque le document est trop grand pour être reproduit en un seul cliché, il est filmé à partir de l'angle supérieur gauche, de gauche à droite, et de haut en bas, en prenant le nombre d'images nécessaire. Les diagrammes suivants illustrent la méthode.



MICROCOPY RESOLUTION TEST CHART

(ANSI and ISO TEST CHART No. 2)



**APPLIED IMAGE Inc**

1853 East Main Street  
Rochester, New York 14609 USA  
(716) 482-0300 - Phone  
(716) 286-0000 - Fax



n l 0 # 7

# OTTAWA

AND ITS NEARBY  
RESORTS



## THE GATINEAU

REACHED BY  
THE OTTAWA NORTHERN & WESTERN RY.

## ALGONQUIN PARK

REACHED BY  
CANADA ATLANTIC RY.

## RIDEAU LAKES

REACHED BY  
RIDEAU NAV. CO.

## THE UPPER OTTAWA

REACHED BY  
CANADA ATLANTIC RY.  
OR CANADIAN PACIFIC RY. AND  
PEMBROKE NAV. CO.

## THE OTTAWA RIVER

REACHED BY  
THE OTTAWA RIVER NAV. CO.

# Sportsmen's Goods

GUNS AND AMMUNITION  
FISHING TACKLE AND  
ATHLETIC GOODS :: :: :: ::



A Splendid Stock of  
Up-to-date Goods....

## KETCHUM & CO.

Corner Bank and Sparks Streets  
OTTAWA

ONE OF THE SIGHTS TO BE SEEN IN  
MONTREAL IS

# Chas. Desjardins & Co.



1537 to 1543  
St. Catherine St.

○  
The Largest  
and Best Equipped  
Retail Fur  
House in the World

○  
MONTREAL  
CANADA

# Tourists

Telephone  
150

AND OTHERS WILL FIND  
ALL THEY REQUIRE IN ..

## MEDICINES

TOILET ARTICLES, &c.

Prescriptions  
a specialty

AT

## R. A. McCORMICK'S

*Drug Store*

71 Sparks Street

... OTTAWA

# OTTAWA

The Capital of Canada

... And its ...  
.. Splendid ..  
Surroundings

**T**OURIST, when you go to Ottawa, take a gun or fishing tackle, a camera or a sketch-book, or merely an eye for the beautiful—and take a rest. If there is any kind of outdoor sport you enjoy, you can have it in or near Ottawa.

The capital of Canada is noted for the beauty of its position on a high bluff overlooking the Ottawa river, and it is one of the busiest cities of the fair Dominion.

Many railroads enter and leave Ottawa, passing through some of the prettiest scenery in the world. Electric railways run from the centre of the city to the resorts — Britannia-on-the-Bay, Queen's Park and Aylmer, on the shore of Lake Deschênes. Splendid steamers leave the city regularly for trips down the Ottawa river and up the Rideau canal and river, through the far-famed Rideau lakes to Kingston. The residence of the Governor-General, Lord Minto, is only a few minutes' distance from the heart of the city.

A million horse-power may be developed within a radius of forty-five miles of the city, by using the



Parliament Buildings, Ottawa.



waterfalls which are so numerous. Already a number of these water-powers are being used to develop electrical energy, and this is offered at low rates to manufacturers. About the Chaudière, where the Ottawa river hurls itself over a chasm into the Big Kettle, thousands of busy saws are cutting logs into marketable timber. Other great industries are located there, and Ottawa as a manufacturing centre is already noted throughout Canada. Ottawa was the first city in the world to be lighted exclusively by electric arc lights, and as an electrical centre it



Wellington Street, Ottawa.

easily holds first place in Canada. The electrical car system in the city is unsurpassed, and it runs through all parts of the capital and into the surrounding country, to Rockcliffe, the Central Experimental Farm, Britannia, and other delightful summering places, and also connects with the electric cars for Aylmer and Queen's Park, passing the rapids above the Chaudière falls and taking the tourist to the shores of Lake Deschênes. The mineral resources of the district are immeasurable, particularly in mica, plumbago, iron, phosphates and other useful minerals. The transportation problem is not a source of worry to the manufacturers and others. There are abundant facilities for transporting material of all kinds at low rates.

The city is governed along progressive lines. Every encouragement is given to manufacturers to locate in or near the city, and there is a population of about 80,000 people to draw from for the labor supply. The streets are kept in good condition, the Dominion Government is spending considerable in beautifying the city, and some of the drives are models of beauty. The public buildings are such that any city might be proud of. The magnificent parliament buildings are among the most beautiful structures in the world. They are perfect specimens



Lac des Isles, Gatineau.

of Gothic architecture, and were built at a cost of over \$5,000,000. The corner stone of the buildings was laid in 1860 by the Prince of Wales, now King Edward VII., and the stone is gladly shown to tourists; it is within the Senate building, which is always open to the public. From the top of Victoria Tower a splendid view of the varied scenery of the country around Ottawa may be had. The Laurentian hills are to the north, while east and west flow the Ottawa and Rideau rivers. The latter enters the Ottawa over a beautiful fall.

Ottawa has an assured future from a commercial point of view, because of the fact that the Dominion Government spends annually over a million dollars in salaries alone, while the manufacturers of the city also spend millions.



A Glimpse of Pagan Falls, Gatineau.

### THE GATINEAU

Glimpses of the Gatineau call up visions of the awful and mysterious halo which surrounds the virgin forest and stream.

After crossing the Ottawa river over the Inter-provincial bridge, by the Ottawa Northern and Western Railway (now part of the eastern division of the Canadian Pacific Railway), stretching far and wide over the horizon from the north shore, loom up the dusky shades of the Laurentides, desolate and forbidding, as it were a wall between us and the fertile lands and placid lakes beyond. The train for sixty miles follows a sinuous course, ever delighting the eye with a panoramic exhibition of scenic beauties which is enchanting.

“ Woodland scenes and silvery voices,  
And a forest camp by a crystal stream.”

The lakes teem with fish—red and grey trout, and the gamey black bass—which delights the soul of the angler, In the early spring the sportive trout is quite the fancy, and is eagerly sought after. Then comes the black bass season, later on; and, finally, the hunting season, when the forests are red in their richest autumnal tints. Then it is that the sportsman buckles on his armor and makes war upon the moose in the north country, the red

deer nearer civilization, and the black duck, partridge, etc., at more convenient points.

### ALGONQUIN PARK

Algonquin Park, comprising 1,000 square miles of highlands, lakes and rivers, is one, only, of nature's playgrounds along the line of the Canada Atlantic Railway.

This vast extent of practically virgin wilderness has been aptly been termed "Lakeland," and the Canada Atlantic Railway penetrates it for almost two hundred miles.

Owing to the rugged nature of the country, the route of the railway follows the water-courses, and the consequence is that the line skirts the borders of over seventy lakes, winds along the banks of many rivers to their source, presenting a charming outlook from the car windows, mile after mile, the only change being, from time to time, a dash through a belt of majestic pine and hardwood forest, sufficient to relieve that weariness which possibly follows a surfeit of any one phase of nature, no matter how grand or imposing.

Too much stress cannot be put upon the entire desirability of this territory as a playground for the recreation and entertainment of all those weary ones



Among the Islands near Petewawa, Upper Ottawa.

and their families seeking complete change of environment and relaxation from exhausting business.

Impressions of tourists who have spent some time in this magnificent country are now appearing in contributions to the press, magazines, and in papers presented to institutes, naturalist clubs, etc., extracts from which are taken.

"The predominant charm of Algonquin Park is not the scenery, so varied and picturesque, nor the forest, with its clean and open hardwood, its crowded mixed timber, and its solemn pineries, nor the lakes,



Chaffey's Locks, Rideau Canal.

teeming with fish, nor the climate, nor the beasts and birds, but the greatest and abiding charm is the harmony with which every phase of nature conspires to please.

" 'Age cannot wither her ; nor custom stale  
Her infinite variety.' "

"The dominant characteristic of scenery is a quiet beauty, restful and refreshing to the wearied nerves of the toiler in our too strenuous civilization. There are lakes everywhere, few of them large, but all of them beautiful, their clear, cool waters, well stocked with trout. They lie like mirrors amongst the wooded hills. The streams connecting them are for the most part navigable by canoe, and the portages are neither long nor difficult. The divides



Chandière Falls, Ottawa.

between the different water systems are easily crossed, and there are often two or more alternative routes between two given points."

### RIDEAU LAKES

Among the many great waterways which Canada boasts of is the chain of lakes and rivers lying between Kingston and Ottawa, and none seems



On Indian River, Pembroke.

to have attracted the tourist within the past few years to a greater degree than what was originally termed the Rideau Chain of Lakes. To the lover of nature this locality appeals in more ways than one. The region is replete with vistas of wondrous beauty, and rapid transitions are quite common on the Rideau and impress one with thoughts never to be forgotten.

In the past this waterway has been known as the Rideau Canal, a name which was as out of



Channel through Islands in Davis Lake, Rideau Lakes.

place as it is foreign to the route. Instead of a canal, it is a series of beautifully-bordered lakes and rivers connecting the St. Lawrence river with the Ottawa. The distance between Kingston and Ottawa is  $126\frac{1}{2}$  miles. The canal portion of the route is short, and was constructed by the British Government as a military work in 1830, at a cost of five million dollars. If, in time of war, the navigation of the St. Lawrence were interrupted, this canal, in conjunction with the Ottawa river, would furnish direct communication between Montreal and the great lakes.

It would not be out of place to refer here to the excellent steamboat service operated by the Rideau Lakes Navigation Company, Limited, which has done a great deal to popularize this charming route. The fleet at present includes the "Rideau King" and the "Rideau Queen." They are both 112 feet in length, and built especially to meet the requirements of this route, the "Rideau Queen" being the



Looking down Cranberry Lake, from Jones' Falls, Rideau Lakes.



more modern, having been launched late in the season of 1900.

### THE UPPER OTTAWA

A more beautiful summer trip cannot be found in America to compare with the route of the Upper Ottawa river between Pembroke and Des Joachims, a run of forty-five miles through unrivalled scenery, combining the loveliness of the famous Thousand Islands with the grandeur of the celebrated Saguenay. The magnificent steel steamer "Victoria," operated by the Pembroke Navigation Company, Limited, makes regular trips between the two points mentioned.



Jones' Falls Locks, Rideau Canal.

The tired and overworked denizen of the city and the man who has that "tired feeling" can find rest, health and happiness in this beautiful district. The pine-clad hills of the Laurentians permeate the air with health-giving ozone, and renewed vigor is given to all who visit the region. No gorgeous palaces are in evidence to sully the view, and nothing mars the natural beauty and grandeur of the scenery. Capital boating and fishing can be had all along the route. The shores along the river are bold and rocky, and rise to quite a height on both sides, crowned with immense pines, many of which throw their branches far over the water, affording shelter alike from sun and sudden shower. Pebbly beaches furnish excellent landing-places for

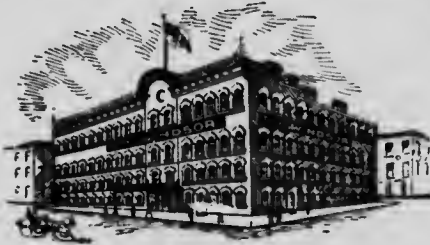


row-boats. The surface of the river is broken up with hundreds of islands, scattered irregularly, so as to present to the tourist who may be drifting over it an ever-varying series of enchanting views. Now the boat glides safely along under some rocky shore, so near that you may seize the down-stooping forest branches. Anon some tranquil inlet opens, revealing the primitive fisherman's snug cottage and his trimly-painted skiff curtesying to the waves in some protecting nook. Again the scene assumes more wild and primitive features—craggy ledges grown grey in opposing the gale, bold promontories surmounted by trees of gigantic proportions, long reaches of glimmering sand-beach; and then there are forests, embowered coves and grassy openings that have known no changes save such as nature has wrought for ages, inviting them to their cool retreats. In short, the tourist may sail through this labyrinth of scenic grandeur, amidst ever-varying but always interesting surroundings.

## GENERAL INFORMATION

The Windsor Hotel, at Ottawa, is under new management.

It has been entirely remodelled and refurnished and is to-day one of the most comfortable hotels to be found in Northern Canada.



The Windsor, Ottawa.

The table is unexcelled and the location is central, being easy of access by street car from all stations and steamboat dock.

Toronto.—The attention of travellers is directed to the King Edward, Toronto's new palatial hotel, which will be found one of the best on the continent. It is beautifully furnished and decorated, fitted with every modern convenience, and designed to cater to the very best class of travel, and will be found satisfactory in every respect. Any street-car will take you there from Union Station.

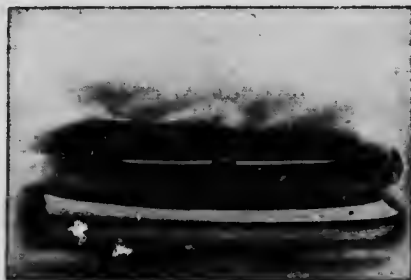
The launch illustrated here is one made by the Gasoline Engine Company of Toronto Junction. The engine is installed under the floor, and works a three-blade re-



The King Edward, Toronto.

versible propeller, the only one manufactured and patented in Canada. This company manufacture marine engines of from two to fifty horse-power, which can also be used in automobiles. and can be speeded from 300 to 1500. Their works are at the

foot of York and Lake streets, Toronto. Write for catalogue.



30-foot Launch equipped by the Gasoline Engine Co. of Toronto Junction, Ltd.

**Caledonia Springs.**  
—The Grand Hotel at Caledonia Springs has been completely refurbished, telephone in every

room, passenger elevator, and the *cuisine* is excellent. The new bath-house has been erected with

## Richelieu and Ontario Navigation Co.

### Niagara to the Sea

Palatial steel steamers leave TORONTO for sail through LAKE ONTARIO, the THOUSAND ISLANDS (America's Venice), making the exciting descent of all Rapids to MONTREAL, QUEBEC, MURRAY BAY, TADOUSAC, thence up the famous SAGUENAY RIVER. The scenery of this remarkable river for wild grandeur and variety is unequalled. . . . .

For particulars apply to

THOS. HENRY, - Traffic Manager, Montreal, Can



Notice to Tourists  
WHEN IN OTTAWA

FOR

Souvenir  
Goods and  
Diamonds

:: :: GO TO :: ::

McMILLAN'S  
82 Sparks Street  
*Jeweller & Optician*



Most Magnificent Scenic Route in the  
World, Running through Niagara's  
Wonderful Gorge

The magnificent Whirlpool Rapids—the  
Whirlpool—Devil's Hole—Devil's Hole  
Rapids. Along the water's edge the en-  
tire distance. Wonderful Caves, Rapids, Battle Grounds and  
Historic Points.

## The Bracebridge Acetylene Gas Co.

SOLE MANUFACTURERS OF THE  
... BRILLIANT LIGHT ...  
**ACETYLENE GAS GENERATOR**  
THE SAFEST, SIMPLEST AND BEST

Write for catalogue and  
testimonials

... BRACEBRIDGE, ONT.

TO THE TOURIST!

G. S. MAHON . . .

Telephone  
10

First-class Turnouts.  
Cab and Coupé Service. Prompt.  
The Best Service in Ottawa

**LIVERY**

319 WELLINGTON STREET, OTTAWA



Ask everywhere for "The Best"

**Gurd's**

GINGER ALE  
SODA WATER  
APPLE NECTAR  
ETC., ETC.

"MAGI" Caledonia Water

Chas. Gurd & Co., - Montreal

every facility for hot and cold, sulphur and saline baths. A fine golf course has been laid out. Apply to F. A. Jones, manager, Caledonia Springs, Ontario.

#### Vacation Trips on the Canadian Pacific Railway.

The Canadian Pacific Railway touches all points of beauty and interest in Canada, and connects them easily with the United States. More and more visitors come year by year, attracted by the mysterious windings of Lake Memphremagog and the woods that clothe Mount Orford and Owl's Head. There is much good fishing and small game shooting, and the region can be conveniently reached by the Canadian Pacific Railway, which makes connections with the Boston and Maine and Grand Trunk railways at Sherbrooke, and itself runs from here through Maine and to St. John, N. B.

Ontario, too, is threaded by the Canadian Pacific Railway, and with Toronto and Peterborough, important places on its line, the way to the Kawartha Lakes and the Thousand Islands lie naturally over its tracks. The easiest way to visit these two delightful spots would be to travel by the Canadian Pacific Railway to Peterborough over the main line between Montreal, Toronto and Detroit, and then, after spending a few days in the charming solitudes of the lakes, go on to Toronto and take the sail from there through the Thousand Islands.

These come to an end just above Brockville, and a most pleasant stay can be made for a few days at that pretty town. From it there are many canoe or yachting trips to be made through the islands, and thus visitors get to know and enjoy their ever-changing views of wooded isles and peaceful river with a thoroughness and restfulness impossible from the deck of a steamer.

Copies of "Summer Tours," embracing the entire line from coast to coast, "Fishing and Shooting," "Sportsman's Map," and "Hints About Camping," valuable guides and handbooks to anglers and sportsmen, may be had gratis upon application to any representative of the company.

---

The paper in this folder is manufactured by the  
CANADA PAPER COMPANY, Montreal.

# A. Rosenthal & Sons

*GOLDSMITHS  
AND JEWELERS*

DIAMONDS <sup>AND</sup> SOUVENIRS  
::: OUR SPECIALTIES :::

GOLDSMITHS' HALL, - OTTAWA

ANYBODY CAN MAKE GOOD PICTURES BY THE

Catalogue free  
at the dealers or  
by mail

## KODAK SYSTEM

Better results  
than the  
old way, too

Kodaks. . . . . \$5.00 to \$75  
Developing Machines. \$2.50 to \$10

Canadian Kodak Co., Limited  
TORONTO, CAN.

# THE ORME PIANO



*Artistic  
in design*

*Perfect  
in tone  
and  
finish*

—  
**\$300.00**

ON EASY  
TERMS ::

—  
WRITE FOR  
PARTICULARS

**J. L. ORME & SON**  
189 SPARKS ST. OTTAWA



## John M. Garland, Son & Co.

WHOLESALE

# Dry Goods

*Woolens and  
Smallwares*

We carry one of the best  
assorted stocks of gen-  
eral Dry Goods in Can-  
ada, selected specially to  
suit the Ottawa Valley  
trade :: :: :: :: ::

Merchants please call and see us or write  
for samples

Corner Queen and O'Connor Sts.

OTTAWA

W. J. HENRY

*Guns and  
Ammunition  
Shells Loaded  
to order*

Taxidermist

Importer of fine Singing Canaries,  
Parrots, Gold Fish, etc.

80-82 Bank Street,

OTTAWA

M. HOWE

REPAIRS OF  
ALL SORTS

---

---

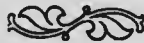
*Guns, Ammunition, Etc.  
... Fishing Tackle ...  
... Sporting Goods ...*

---

---

OTTAWA, - ONTARIO

Tuckett's  
...Marguerite Cigars...



Sales exceed a million a month

The Ottawa Trunk  
and Harness Store

---

T. J. McCANN  
... MANAGER ...

---

DEALER IN ALL  
KINDS OF

Trunks <sup>AND</sup>  
Travelling  
Bags . . . .  
Harness .  
Saddles . .

131 Sparks St., - OTTAWA

High-Class Goods  
a Specialty









