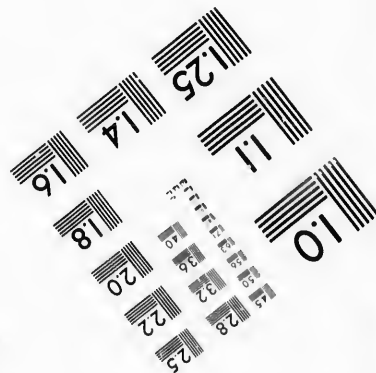
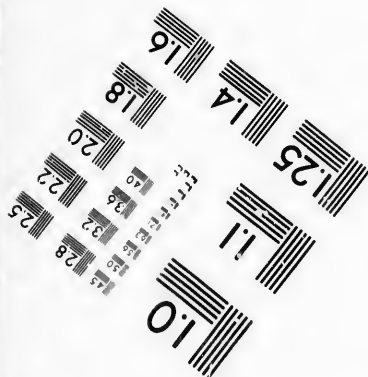
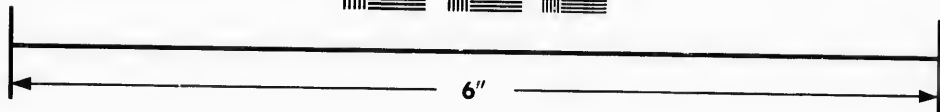
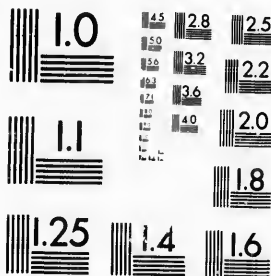


**IMAGE EVALUATION
TEST TARGET (MT-3)**



**Photographic
Sciences
Corporation**

23 WEST MAIN STREET
WEBSTER, N.Y. 14580
(716) 872-4503

14 16 18 20 22 25
28 30 32 34 36 38 40 42 44 46 48 50 52 54 56 58 60 62 64 66 68 70 72 74 76 78 80 82 84 86 88 90 92 94 96 98 100

**CIHM/ICMH
Microfiche
Series.**

**CIHM/ICMH
Collection de
microfiches.**



Canadian Institute for Historical Microreproductions / Institut canadien de microreproductions historiques

© 1987

10

Technical and Bibliographic Notes/Notes techniques et bibliographiques

The Institute has attempted to obtain the best original copy available for filming. Features of this copy which may be bibliographically unique, which may alter any of the images in the reproduction, or which may significantly change the usual method of filming, are checked below.

L'Institut a microfilmé le meilleur exemplaire qu'il lui a été possible de se procurer. Les détails de cet exemplaire qui sont peut-être uniques du point de vue bibliographique, qui peuvent modifier une image reproduite, ou qui peuvent exiger une modification dans la méthode normale de filmage sont indiqués ci-dessous.

- Coloured covers/
Couverture de couleur
- Covers damaged/
Couverture endommagée
- Covers restored and/or laminated/
Couverture restaurée et/ou pelliculée
- Cover title missing/
Le titre de couverture manque
- Coloured maps/
Cartes géographiques en couleur
- Coloured ink (i.e. other than blue or black)/
Encre de couleur (i.e. autre que bleue ou noire)
- Coloured plates and/or illustrations/
Planches et/ou illustrations en couleur
- Bound with other material/
Relié avec d'autres documents
- Tight binding may cause shadows or distortion
along interior margin/
La reliure serrée peut causer de l'ombre ou de la
distorsion le long de la marge intérieure
- Blank leaves added during restoration may
appear within the text. Whenever possible, these
have been omitted from filming/
Il se peut que certaines pages blanches ajoutées
lors d'une restauration apparaissent dans le texte,
mais, lorsque cela était possible, ces pages n'ont
pas été filmées.
- Additional comments:/
Commentaires supplémentaires:

[Printed ephemera] 1 sheet (verso blank)

- Coloured pages/
Pages de couleur
- Pages damaged/
Pages endommagées
- Pages restored and/or laminated/
Pages restaurées et/ou pelliculées
- Pages discoloured, stained or foxed/
Pages décolorées, tachetées ou piquées
- Pages detached/
Pages détachées
- Showthrough/
Transparence
- Quality of print varies/
Qualité inégale de l'impression
- Includes supplementary material/
Comprend du matériel supplémentaire
- Only edition available/
Seule édition disponible
- Pages wholly or partially obscured by errata
slips, tissues, etc., have been refilmed to
ensure the best possible image/
Les pages totalement ou partiellement
obscurcies par un feuillet d'errata, une pelure,
etc., ont été filmées à nouveau de façon à
obtenir la meilleure image possible.

This item is filmed at the reduction ratio checked below/
Ce document est filmé au taux de réduction indiqué ci-dessous.

10X	12X	14X	15X	16X	18X	20X	22X	24X	26X	28X	30X	32X
<input type="checkbox"/>	<input type="checkbox"/>	<input type="checkbox"/>	<input type="checkbox"/>	<input type="checkbox"/>	<input type="checkbox"/>	<input type="checkbox"/>	<input type="checkbox"/>	<input type="checkbox"/>	<input type="checkbox"/>	<input type="checkbox"/>	<input type="checkbox"/>	<input checked="" type="checkbox"/>

The copy filmed here has been reproduced thanks to the generosity of:

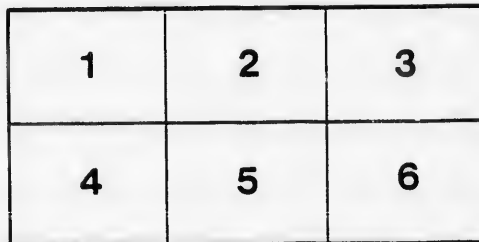
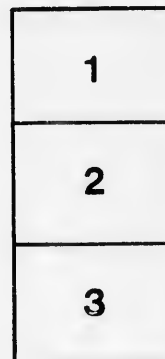
New Brunswick Museum
Saint John

The images appearing here are the best quality possible considering the condition and legibility of the original copy and in keeping with the filming contract specifications.

Original copies in printed paper covers are filmed beginning with the front cover and ending on the last page with a printed or illustrated impression, or the back cover when appropriate. All other original copies are filmed beginning on the first page with a printed or illustrated impression, and ending on the last page with a printed or illustrated impression.

The last recorded frame on each microfiche shall contain the symbol \rightarrow (meaning "CONTINUED"), or the symbol ∇ (meaning "END"), whichever applies.

Maps, plates, charts, etc., may be filmed at different reduction ratios. Those too large to be entirely included in one exposure are filmed beginning in the upper left hand corner, left to right and top to bottom, as many frames as required. The following diagrams illustrate the method:



L'exemplaire filmé fut reproduit grâce à la générosité de:

New Brunswick Museum
Saint John

Les images suivantes ont été reproduites avec la plus grande soin, compte tenu de la condition et de la netteté de l'exemplaire filmé, et en conformité avec les conditions du contrat de filmage.

Les exemplaires originaux dont la couverture en papier est imprimée sont filmés en commençant par le premier plat et en terminant soit par la dernière page qui comporte une empreinte d'impression ou d'illustration, soit par le second plat, selon le cas. Tous les autres exemplaires originaux sont filmés en commençant par la première page qui comporte une empreinte d'impression ou d'illustration et en terminant par la dernière page qui comporte une telle empreinte.

Un des symboles suivants apparaîtra sur la dernière image de chaque microfiche, selon le cas: le symbole \rightarrow signifie "A SUIVRE", le symbole ∇ signifie "FIN".

Les cartes, planches, tableaux, etc., peuvent être filmés à des taux de réduction différents. Lorsque le document est trop grand pour être reproduit en un seul cliché, il est filmé à partir de l'angle supérieur gauche, de gauche à droite, et de haut en bas, en prenant le nombre d'images nécessaire. Les diagrammes suivants illustrent la méthode.

THEATRE!

St. John Dramatic Lyceum
SOUTH SIDE KING SQUARE.

MANAGER & PROPRIETOR, -- J. W. LANERGAN.
Assistant Manager, J. H. Brown | Leader of the Orchestra, W. Mullaly.
Business Agent, H. B. Hugganod

Another Bill of Novelty !!

From Bourjault's powerful Sensational Drama called the

STREETS OF NEW YORK

[From Public Opinion.]

It is interestingly succeeded, by those who have witnessed the representations of this most interesting drama, that a greater amount of genuine pathos and elevated commendation has seldom, if ever, been elicited in any stage representation of the present time. All the various features of

LIFE IN THE GREAT CITY

are so vividly portrayed in its intricate and of the most intensely interesting plots that dramatic genius is induced that excites all the emotions of the human mind—joy, sorrow, mirth, sympathy—all in low the course of this great Panorama of Vice, Virtue, Poverty, Wealth, Villainy, Heroism & Justice, with all the episodes which human nature is susceptible. There is food for every taste in this eventful mirror of life in the Metropolis!

High Life in Fifth Avenue

Leaves—The colors of extravagant mockery in this sphere—a little drama developed in it is—The Banker's sinners, he must to support the extravagance of a beautiful daughter. The scene in Wall street. The Banker's aim to see his fortune and his daughter's pride. The death of his victim. The subsequent self-rings of the widowed mother and her orphan children. The vindictive efforts of the good banker to obliterate the evidence of his guilt and to marry with a select and happiness of his queen daughter defeated by the lord of Providence through the winning of her inheritance—two almost dead-end of vice and immorality of vice in the down fall of the banker and his queen, and the exposure to their rights of the wronged ones, present a plot to the adroitness of romance, and their life future of the drama, that the most identical cannot fail to admire Poverty and life in the hazy walks of the city have their exponents in the characters encountered in the Winty

MIDNIGHT SCENES.

From the public thoroughfares and in the postillional tenements of Baxter street, where the noble daughter of the Banker's victim marry debut Justice, and almost releases the sinners of her sufferings from his inevitable fate, by nearly destroying the life of her husband, in her attempt to end her own existence for the protection of her innocent child, reveals a new and a gloomy

FRIDAY EVENING, JUNE 14, 1867.

THE GREAT DRAMA

Streets of New York

PROLOGUE.—Time, 1837.

TOM BADGER, a wild young Clerk, MR. FRANK ROCHE.
CAPT FAIRWEATHER, an aged seaman, " J. B. FULLER.
GIDEON BLOODGOOD, a Speculative Banker, " D. R. ALLEN.
EDWARDS, " J. SCOTT.

THE DRAMA.—Time, 1857.

BADGER, a returned Californian ejected from San Francisco by the Vigilance Committee, very sadly, MR. FRANK ROCHE.
GIDEON BLOODGOOD; one of the leading Bankers of New York, " H. R. ALLEN
PAUL FAIRWEATHER, " SHIRLEY FRANCE.
MARK LIVINGSTON, belonging to one of the first families of New York, " H. L. BASCOMB.
BOB, the " Boot Black," with imitations of the prominent actors of the day, " FRANK HARDENBERG
MR. TUFFY, a decayed Banker, " E. J. MACK.
BOB, his son, of " No. 4," " T. H. BIRNS.
SPOUT, " J. SCOTT.
REPORTER, " T. GRAMAM.
SHERIFF, " E. SEAYER.
OFFICER, " C. MINGAY.
NEWSBOY, " J. WALKER.
MRS. FAIRWEATHER, MRS. D. R. ALLEN.
LUCY FAIRWEATHER, RACHEL NOAH.
AIDA BLOODGOOD, MISS ELFUR.
MRS. PUFFY, SUSAN FLOOD.

To-morrow, Saturday, DON CAESAR DE BAZAN, with other amusements!

Prices of Admission.

DRESS CIRCLE ORCHESTRA SEATS, 50 cts. | PARQUETTE, 75 cts.

Which can be secured at the Office of the Lyceum during the day of each performance, from 11 1/2 A.M. to 1 1/2 P.M.

RESERVED SEATS.—Reserved until the beginning of the Second Act only.

Tickets for sale during the day at Clark & Co.'s Stationery Store, Prince Wm. Street, and at the Hotels.

The two Back Seats of the Dress Circle are set apart for the exclusive use of Colored People.

Doors open at 7 1/2; Curtains to rise at 8.

LADIES UNACCOMPANIED BY GENTLEMEN NOT ADMITTED.

GOOD ORDER IS EXPECTED AND WILL BE RIGIDLY ENFORCED.

G. W. Day, Printer, 4 Market Street, St. John.

