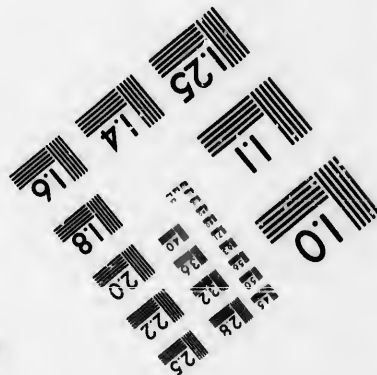
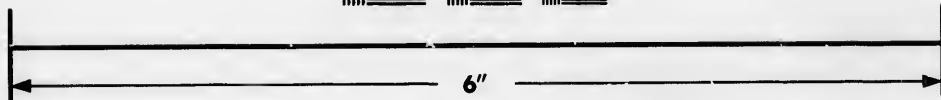
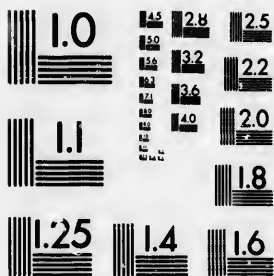


**IMAGE EVALUATION
TEST TARGET (MT-3)**



**Photographic
Sciences
Corporation**

23 WEST MAIN STREET
WEBSTER, N.Y. 14590
(716) 872-4503

14
16
18
20
22
25

**CIHM/ICMH
Microfiche
Series.**

**CIHM/ICMH
Collection de
microfiches.**



Canadian Institute for Historical Microreproductions / Institut canadien de microreproductions historiques

10
11
12
13

© 1986

Technical and Bibliographic Notes/Notes techniques et bibliographiques

The Institute has attempted to obtain the best original copy available for filming. Features of this copy which may be bibliographically unique, which may alter any of the images in the reproduction, or which may significantly change the usual method of filming, are checked below.

L'Institut a microfilmé le meilleur exemplaire qu'il lui a été possible de se procurer. Les détails de cet exemplaire qui sont peut-être uniques du point de vue bibliographique, qui peuvent modifier une image reproduite, ou qui peuvent exiger une modification dans la méthode normale de filmage sont indiqués ci-dessous.

- | | |
|--|--|
| <input type="checkbox"/> Coloured covers/
Couverture de couleur | <input type="checkbox"/> Coloured pages/
Pages de couleur |
| <input type="checkbox"/> Covers damaged/
Couverture endommagée | <input checked="" type="checkbox"/> Pages damaged/
Pages endommagées |
| <input type="checkbox"/> Covers restored and/or laminated/
Couverture restaurée et/ou pelliculée | <input type="checkbox"/> Pages restored and/or laminated/
Pages restaurées et/ou pelliculées |
| <input type="checkbox"/> Cover title missing/
Le titre de couverture manque | <input checked="" type="checkbox"/> Pages discoloured, stained or foxed/
Pages décolorées, tachetées ou piquées |
| <input type="checkbox"/> Coloured maps/
Cartes géographiques en couleur | <input type="checkbox"/> Pages detached/
Pages détachées |
| <input type="checkbox"/> Coloured ink (i.e. other than blue or black)/
Encre de couleur (i.e. autre que bleue ou noire) | <input type="checkbox"/> Showthrough/
Transparence |
| <input type="checkbox"/> Coloured plates and/or illustrations/
Planches et/ou illustrations en couleur | <input type="checkbox"/> Quality of print varies/
Qualité inégale de l'impression |
| <input type="checkbox"/> Bound with other material/
Relié avec d'autres documents | <input type="checkbox"/> Includes supplementary material/
Comprend du matériel supplémentaire |
| <input type="checkbox"/> Tight binding may cause shadows or distortion
along interior margin/
La reliure serrée peut causer de l'ombre ou de la
distorsion le long de la marge intérieure | <input type="checkbox"/> Only edition available/
Seule édition disponible |
| <input type="checkbox"/> Blank leaves added during restoration may
appear within the text. Whenever possible, these
have been omitted from filming/
Il se peut que certaines pages blanches ajoutées
lors d'une restauration apparaissent dans le texte,
mais, lorsque cela était possible, ces pages n'ont
pas été filmées. | <input type="checkbox"/> Pages wholly or partially obscured by errata
slips, tissues, etc., have been refilmed to
ensure the best possible image/
Les pages totalement ou partiellement
obscurcies par un feuillet d'errata, une pelure,
etc., ont été filmées à nouveau de façon à
obtenir la meilleure image possible. |
| <input checked="" type="checkbox"/> Additional comments: / [Printed ephemera] [4] p.
Commentaires supplémentaires: | |

This item is filmed at the reduction ratio checked below/
Ce document est filmé au taux de réduction indiqué ci-dessous.

10X	14X	18X	22X	26X	30X
<input type="checkbox"/>	<input checked="" type="checkbox"/>	<input type="checkbox"/>	<input type="checkbox"/>	<input type="checkbox"/>	<input type="checkbox"/>
12X	16X	20X	24X	28X	32X

The copy filmed here has been reproduced thanks to the generosity of:

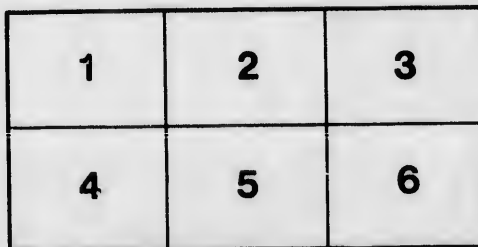
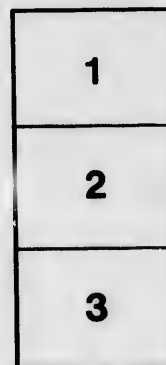
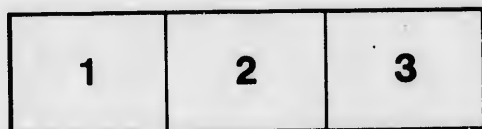
Library of the Public
Archives of Canada

The images appearing here are the best quality possible considering the condition and legibility of the original copy and in keeping with the filming contract specifications.

Original copies in printed paper covers are filmed beginning with the front cover and ending on the last page with a printed or illustrated impression, or the back cover when appropriate. All other original copies are filmed beginning on the first page with a printed or illustrated impression, and ending on the last page with a printed or illustrated impression.

The last recorded frame on each microfiche shall contain the symbol → (meaning "CONTINUED"), or the symbol ▽ (meaning "END"), whichever applies.

Maps, plates, charts, etc., may be filmed at different reduction ratios. Those too large to be entirely included in one exposure are filmed beginning in the upper left hand corner, left to right and top to bottom, as many frames as required. The following diagrams illustrate the method:



L'exemplaire filmé fut reproduit grâce à la générosité de:

La bibliothèque des Archives
publiques du Canada

Les images suivantes ont été reproduites avec le plus grand soin, compte tenu de la condition et de la netteté de l'exemplaire filmé, et en conformité avec les conditions du contrat de filmage.

Les exemplaires originaux dont la couverture en papier est imprimée sont filmés en commençant par le premier plat et en terminant soit par la dernière page qui comporte une empreinte d'impression ou d'illustration, soit par le second plat, selon le cas. Tous les autres exemplaires originaux sont filmés en commençant par la première page qui comporte une empreinte d'impression ou d'illustration et en terminant par la dernière page qui comporte une telle empreinte.

Un des symboles suivants apparaîtra sur la dernière image de chaque microfiche, selon le cas: le symbole → signifie "A SUIVRE", le symbole ▽ signifie "FIN".

Les cartes, planches, tableaux, etc., peuvent être filmés à des taux de réduction différents. Lorsque le document est trop grand pour être reproduit en un seul cliché, il est filmé à partir de l'angle supérieur gauche, de gauche à droite, et de haut en bas, en prenant le nombre d'images nécessaire. Les diagrammes suivants illustrent la méthode.

trata
o

pelure,
à



**Ticket and
Programme.**

The Sixth

ANNUAL

♦ ♦ ♦ ♦ ♦

CONCERT

BY THE

Stratford Juvenile Select Choir

Numbering 60 Voices, with orchestral
accompaniment.

CITY HALL, STRATFORD,

with list

Thursday Evening, June 1st, 1893.

ADMISSION, ADULTS 25c.

Programme.

PART FIRST.

Instrumental Introduction—
Chorus—	"We are the flowers."
Song (Recluse)—	"Here would I rest."
Semi-Chorus—	"Rest thee here."
Recitative (Recluse)—	"Lost in wonder."
Duet (Rose and Lily)—	"Would'st thou know."
Song (Recluse)—	"O gentle peace."
Chorus—	"Who shall be Queen."
Solo (Crocus) and Chorus—	"I am the first."
Solo (Dahlia) and Chorus—	"Peace, false pretender."
Duet (Heliotrope and Mignonette) and Chorus—	"'Tis not in beauty."
Solo (Japonica) and Chorus—	"Prized by the beautiful."
Solo (Sunflower) and Chorus—	"Make way, ye silly praters."
Chorus—	"Say where is our favorite Lily."
Duet (Violet and Lily)—	"Sister flowrets, we are here."
Solo (Rose) and Chorus—	"The balmy odours which we bear."
Recit. (Tulip)—	"Lo twilight shadows."
Chorus—	"Come, come quickly away."
Hymn, To-Night. Semi-Chorus and Song (Recluse)—	"Fold, O night."

INTERLUDE.

Duet (Nightingale and Rose)— "Wherefore dost thou thus enchant me."

PART SECOND.

Chorus—	"Good morning."
Chorus—	"To the choice."
Recit. and Song (Hollyhock)—	"Softly, dear friends."
Semi-Chorus—	"We love you all."
Semi-Chorus—	"Stranger, thou hast heard our claim."
Song (Recluse)—	"'Tis hard to choose."
Chorus—	"Prepare we for the festive scene."
Chorus of Heather-Bells—	"We come from the hill-side."
Full Chorus. Coronation March—	"We come from the palace."
Semi-Chorus—	"Receive thy crown."
Semi-Chorus—	"On thy brow."
Chorus and Echo—	"Long live our beauteous Queen."
Song (Rose)—	"Filled with gratitude and love."
Chorus March—	"We go to fulfil."
Song (Recluse)—	"I bless the hand."
Finale (Rose, Recluse and Solos)—	"Light of eternal love."

owers."
I rest."
e here."
onder."
know."
peace."
Queen."
e first."
ender."
eauty."
autiful."
raters."
e Lily."
e here."
e bear."
adows."
away."
night."

ARGUMENT.

The Flowers meet in a secluded dell in the forest, to choose their Queen. A person discontented with the world, seeks, in the same place, retirement from its cares and disappointments. The Flowers tell of love and duty; and the Recluse—learning that, to fill well the station allotted by Providence, is to be happy—resolves to return again to usefulness and contentment among her fellow creatures.

N. B.—The Stratford Juvenile Select Choir will be supplemented by a number of adult voices, special reference being made of Mrs. Hoye, of Brantford, late of London, England, who will be heard in Stratford for the first time. The above is an accomplished professional vocalist. The Children's Operetta is replete with charming numbers and Mr. Freeland asks for the same liberal patronage for his Choir as in former years.

nt me."
orning."
choice."
riends."
ou all."
claim."
horse."
scene."
ll-side."
palace."
crown."
brow."
Queen."
nd love."
o fulfil."
e hand."
al love."



EXTRA.

Opening— Tableau Vivants
Solo, Selected— Mrs. H. Hoye, of Brantford
Solo, "Beauty's Eyes," Mr. Clarence Young
Violin Obligato, Mr. F. C. Moore,
By Special Request.
Duet, Selected— Mrs. H. Hoye and Mr. C. Young

Tickets may be reserved at Scarff's Bookstore by paying 10 cents extra.
Plan open on Monday, the 29th.

CANTATA

“The Flower Queen,”

Or, the Coronation of the Rose.

BY GEO. F. ROOT.



CHARACTERS.

Rose	.	.	.	Mrs. H. Hoyer, of Brantford
Recluse	.	.	.	Mrs. A. C. Mowat
Sunflower	.	.	.	Miss Laura Tilley
Crocus	.	.	.	Miss Campbell
Dahlia	.	.	.	Miss Marks
Heliotrope	.	.	.	Miss Myers
Lily	.	.	.	Miss Macfadden
Hollyhock	.	.	.	Miss Mary Jolly
Japonica	.	.	.	Miss Kate Wilson
Violet	.	.	.	Miss Cooper
Mignonette	.	.	.	Miss Read
Tulip	.	.	.	Miss Ethel Welsh
Nightingale	.	.	.	Mrs. H. Hoyer, Brantford
Semi Chorus	.	.	.	Heather Bells

ORCHESTRA.

Miss Bennoch,	.	.	.	First Violin
Mr. F. C. Moore,	.	.	.	" "
Mr. H. Hoyer, of Brantford,	.	.	.	Second Violin
Mr. Geo. Stone,	.	.	.	" "
Miss J. L. Burnett, of London,	.	.	.	'Cello
Mr. J. H. Bradt, City	.	.	.	First Cornet

WM. ALEXANDER, I. P. S.,
President.

MRS. R. SMITH,
Pianist.

W. J. FREELAND,
Musical Director.

L. E. 2.

THE HERALD

FRED. J. SUARFF.

