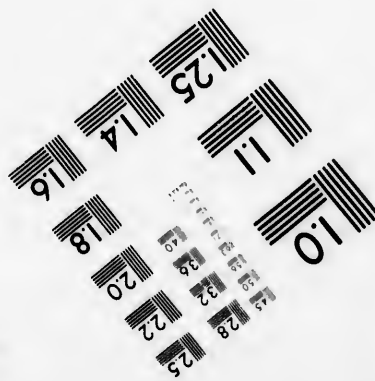
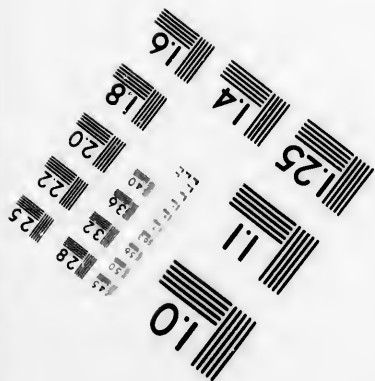
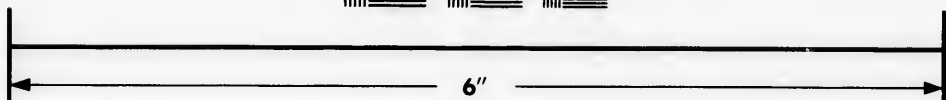
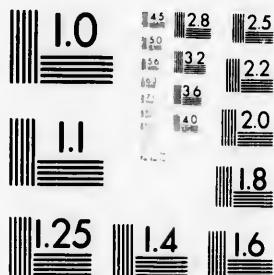


**IMAGE EVALUATION  
TEST TARGET (MT-3)**



**Photographic  
Sciences  
Corporation**

23 WEST MAIN STREET  
WEBSTER, N.Y. 14580  
(716) 872-4503

15 28 25  
18 32  
36 22  
40 20  
118

**CIHM/ICMH  
Microfiche  
Series.**

**CIHM/ICMH  
Collection de  
microfiches.**



Canadian Institute for Historical Microreproductions / Institut canadien de microreproductions historiques

**© 1981**

10  
57

Technical and Bibliographic Notes/Notes techniques et bibliographiques

The Institute has attempted to obtain the best original copy available for filming. Features of this copy which may be bibliographically unique, which may alter any of the images in the reproduction, or which may significantly change the usual method of filming, are checked below.

L'Institut a microfilmé le meilleur exemplaire qu'il lui a été possible de se procurer. Les détails de cet exemplaire qui sont peut-être uniques du point de vue bibliographique, qui peuvent modifier une image reproduite, ou qui peuvent exiger une modification dans la méthode normale de filmage sont indiqués ci-dessous.

- Coloured covers/  
Couverture de couleur
- Covers damaged/  
Couverture endommagée
- Covers restored and/or laminated/  
Couverture restaurée et/ou pelliculée
- Cover title missing/  
Le titre de couverture manque
- Coloured maps/  
Cartes géographiques en couleur
- Coloured ink (i.e. other than blue or black)/  
Encre de couleur (i.e. autre que bleue ou noire)
- Coloured plates and/or illustrations/  
Planches et/ou illustrations en couleur
- Bound with other material/  
Relié avec d'autres documents
- Tight binding may cause shadows or distortion  
along interior margin/  
La reliure serrée peut causer de l'ombre ou de la  
distortion le long de la marge intérieure
- Blank leaves added during restoration may  
appear within the text. Whenever possible, these  
have been omitted from filming/  
Il se peut que certaines pages blanches ajoutées  
lors d'une restauration apparaissent dans le texte,  
mais, lorsque cela était possible, ces pages n'ont  
pas été filmées.
- Additional comments:/  
Commentaires supplémentaires:

- Coloured pages/  
Pages de couleur
- Pages damaged/  
Pages endommagées
- Pages restored and/or laminated/  
Pages restaurées et/ou pelliculées
- Pages discoloured, stained or foxed/  
Pages décolorées, tachetées ou piquées
- Pages detached/  
Pages détachées
- Showthrough/  
Transparence
- Quality of print varies/  
Qualité inégale de l'impression
- Includes supplementary material/  
Comprend du matériel supplémentaire
- Only edition available/  
Seule édition disponible
- Pages wholly or partially obscured by errata  
slips, tissues, etc., have been refilmed to  
ensure the best possible image/  
Les pages totalement ou partiellement  
obscurcies par un feuillet d'errata, une pelure,  
etc., ont été filmées à nouveau de façon à  
obtenir la meilleure image possible.

This item is filmed at the reduction ratio checked below/  
Ce document est filmé au taux de réduction indiqué ci-dessous.

10X	12X	14X	16X	18X	20X	22X	24X	26X	28X	30X	32X
							✓				

The copy filmed here has been reproduced thanks to the generosity of:

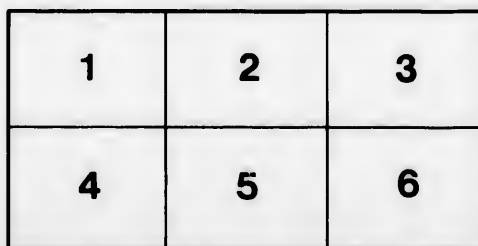
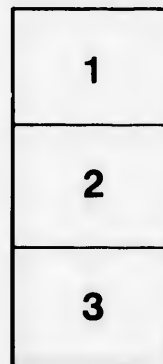
National Library of Canada

The images appearing here are the best quality possible considering the condition and legibility of the original copy and in keeping with the filming contract specifications.

Original copies in printed paper covers are filmed beginning with the front cover and ending on the last page with a printed or illustrated impression, or the back cover when appropriate. All other original copies are filmed beginning on the first page with a printed or illustrated impression, and ending on the last page with a printed or illustrated impression.

The last recorded frame on each microfiche shall contain the symbol → (meaning "CONTINUED"), or the symbol ▼ (meaning "END"), whichever applies.

Maps, plates, charts, etc., may be filmed at different reduction ratios. Those too large to be entirely included in one exposure are filmed beginning in the upper left hand corner, left to right and top to bottom, as many frames as required. The following diagrams illustrate the method:



L'exemplaire filmé fut reproduit grâce à la générosité de:

Bibliothèque nationale du Canada

Les images suivantes ont été reproduites avec le plus grand soin, compte tenu de la condition et de la netteté de l'exemplaire filmé, et en conformité avec les conditions du contrat de filmage.

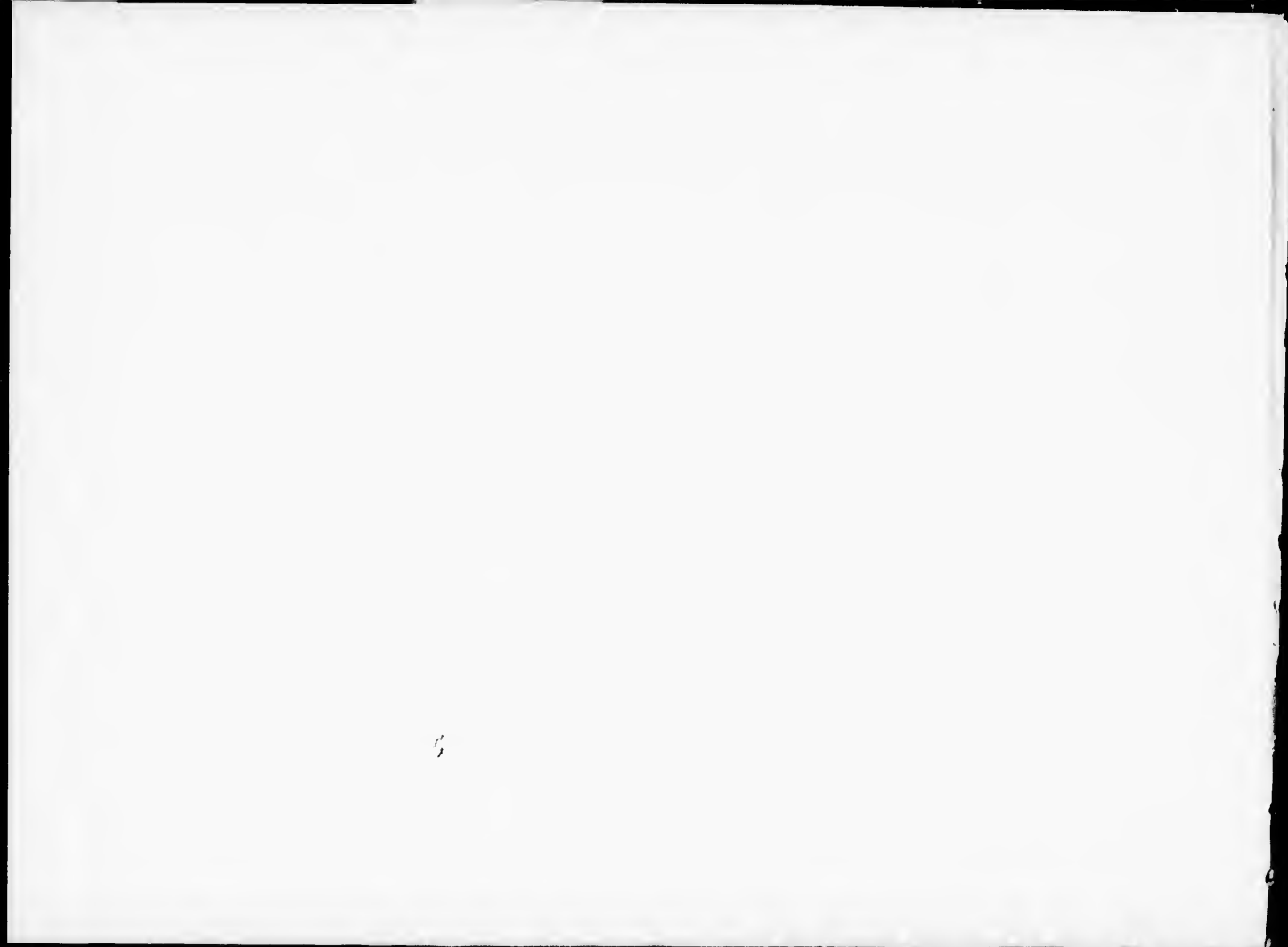
Les exemplaires originaux dont la couverture en papier est imprimée sont filmés en commençant par le premier plat et en terminant soit par la dernière page qui comporte une empreinte d'impression ou d'illustration, soit par le second plat, selon le cas. Tous les autres exemplaires originaux sont filmés en commençant par la première page qui comporte une empreinte d'impression ou d'illustration et en terminant par la dernière page qui comporte une telle empreinte.

Un des symboles suivants apparaîtra sur la dernière image de chaque microfiche, selon le cas: le symbole → signifie "A SUIVRE", le symbole ▼ signifie "FIN".

Les cartes, planches, tableaux, etc., peuvent être filmés à des taux de réduction différents. Lorsque le document est trop grand pour être reproduit en un seul cliché, il est filmé à partir de l'angle supérieur gauche, de gauche à droite, et de haut en bas, en prenant le nombre d'images nécessaire. Les diagrammes suivants illustrent la méthode.

rrata  
o

pelure,  
n à



SOUVENIR  
*of*  
*The* CITY *of* QUEBEC  
@ STE. ANNE DE BEAUPRE

PUBLISHED BY  
**The JAMES BAYNE CO.**  
GRAND RAPIDS, MICH.

*Publishers of Souvenirs*  
*of* NIAGARA FALLS,  
THOUSAND ISLANDS,  
THE ADIRONDACKS,  
LAKE ST. JOHNS,  
THE SAGUENAY RIVER,  
MONTREAL, ETC., ETC.

CANADA was discovered in 1533 by Jacques Cartier. In 1608 Champlain arrived and founded the City of Quebec. There is not a spot in all America more lavishly endowed by nature with beauty and grandeur of its surroundings or richer in historic treasure than the quaint old walled City of Quebec, the "Gibraltar of America" and the sentinel at the portals of the great inland waters of the Continent. For picturesqueness it is not surpassed even by far-famed Naples. Quebec is not a prosaic modern town, it is a city to be once seen then forever remembered with delightful recollections. Every stone in its walls has a history and every spot of ground is sanctified by undying memories of great events, battles fought, victories won, defeat and death, heroically sustained. Almost every building in its antique and tortuous streets has a story to tell and hardly a foundation unturned without discovering some implement of bloody war, used either by savagry or civilization.

It is haunted by the spirit of the past, dead memories of departed glory arise at every turn and like spirits present themselves to those who seek after them. In and out among the narrow streets, crooked alleys and high cliffs still lit the shadows of great men who have left such indelible marks upon the history of the new world by their heroism, zeal and courage.

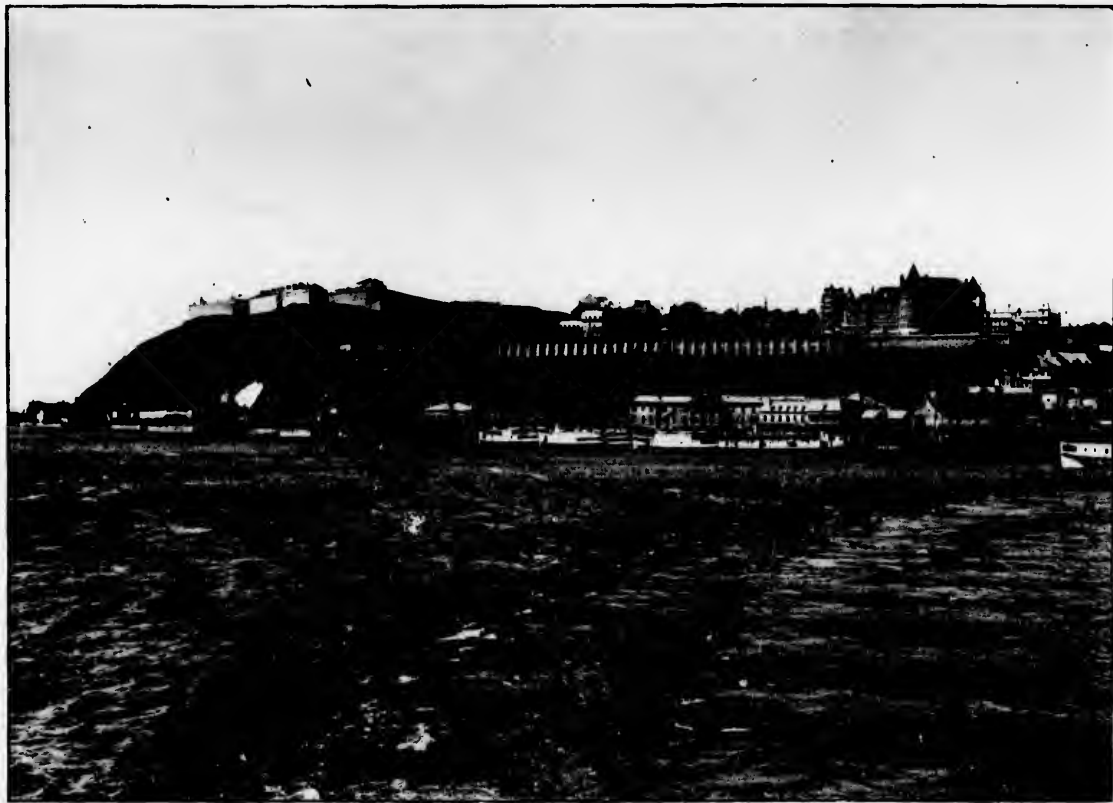
The visitor must be impressed with respect, if not admiration, when he contemplates the sacrifices made, dangers and self-denial endured for the cause of civilization and their country by such men as Jacques Cartier, the discoverer of Canada, Champlain, the founder of Quebec, Laval Frontenac, defying Phipps the English Admiral, when he demanded the surrender of the city, the noble Montcalm, victorious Wolfe denied the participation in the glories of his victory by the summons of death with the announcement of his conquest, General Montgomery and several others whose names are forever connected, not only with the history of Canada but all America. Quebec differs from any other American city, it has every characteristic of a European town. It is the ancient capital of the "New France" a little patch of Medieval Europe transplanted upon a distant shore. To visit Quebec is the next thing to a trip to Europe but your trip would not be complete without making the tour of Lake St. Johns, and the Saguenay River. The best way to do this is to take the Quebec and Lake St. Johns Railroad on St. Andrew street at 8:40 A. M. arriving at Roberval in time for supper. Returning by way of the Richelieu & Ontario Navigation Company's Steamers down the Saguenay River by day light, and up the St. Lawrence River to place of starting. Quebec is easily reached by land or water. Railroads radiate to and from it like the spokes of a wheel, but the best and most charming way for the Summer Tourist, is by one of the Richelieu & Ontario Navigation Company's steamers from the Thousand Islands down the far-famed St. Lawrence River, shooting the rapids by daylight, arriving at Quebec about 7 o'clock A. M., giving ample time for a good breakfast at one of the hotels before taking the train for Lake St. John. For description and illustrations of this magnificent trip see Souvenir of Lake St. John and the Saguenay River.



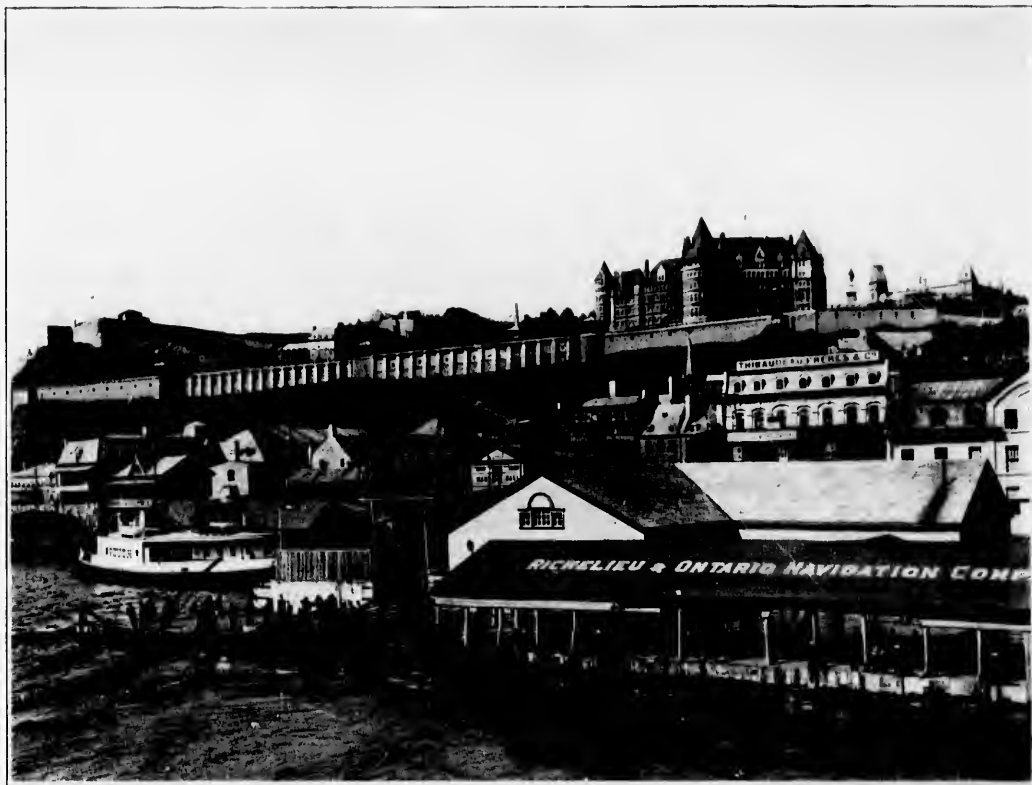
THE CITADEL

As seen from the deck of one of the R. & O. steamers just before landing.





DUFFERIN TERRACE THE CITADEL AND CHATEAU FRONTENAC IN THE DISTANCE. TAKEN FROM ONE OF THE STEAMERS



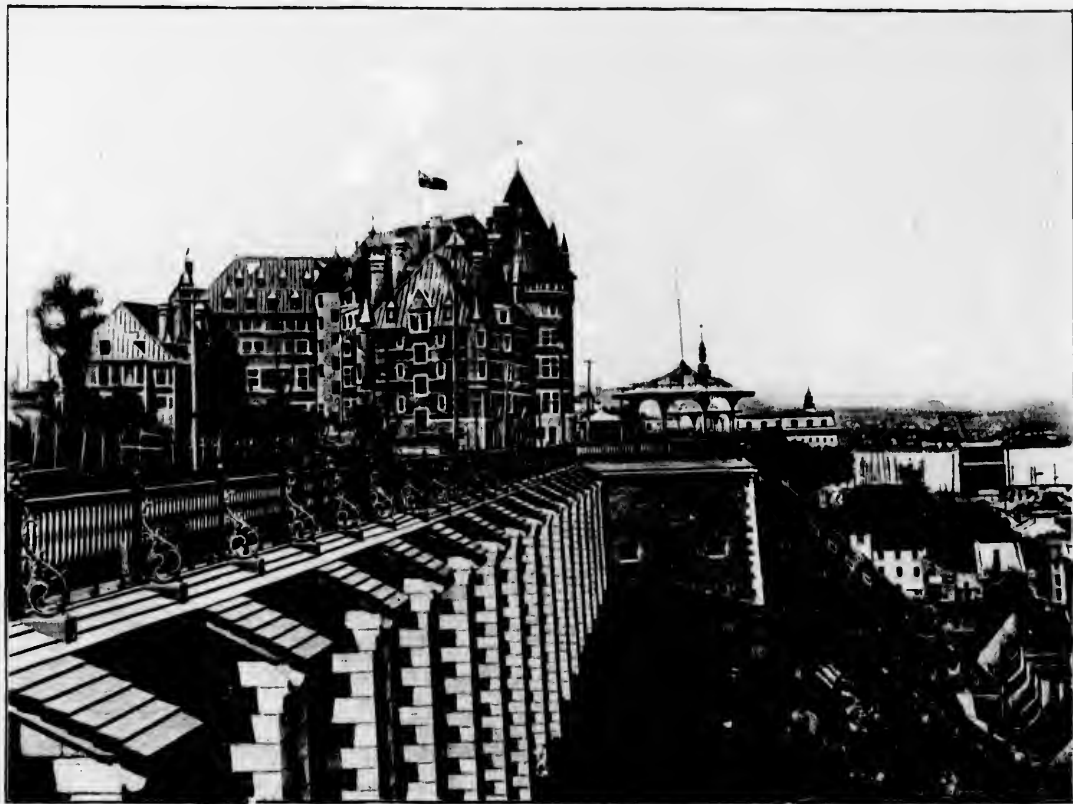
**THE LANDING**

Richelieu & Ontario Navigation Company's steamboat landing and the city of Quebec from the river.



ENTRANCE TO COURT YARD OF CHATEAU FRONTENAC FROM DUFFERIN TERRACE

The grandest hotel in Canada and in many respects has no equal on the continent. It was built by the Canadian Pacific Railroad at a cost of over one million dollars, and is operated by them. It is located upon Dufferin Terrace just below the Citadel, and commands a view both up and down the river as far as the eye can reach and across the river to Lewis. No grander site for a hotel could be found on the continent. The beauty of the scenery cannot be described. It is a spot of great historic note, having been the site of the residence of many of the governors of Canada. A whole volume could be written describing the beauties, comfort and advantage of this princely chateau, we can only give it a passing notice. The interior arrangements, the furnishings, the cuisine and menu compare favorably with the location and exterior.



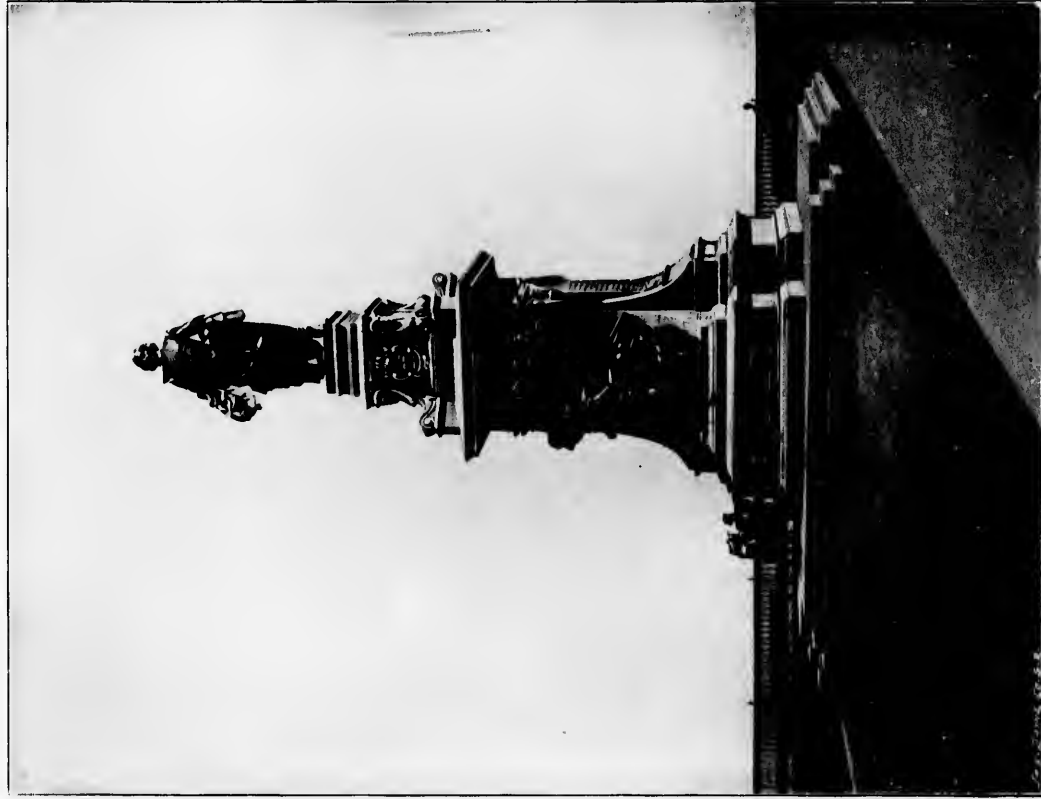
CHATEAU FRONTENAC

From below the Terrace, Showing the Incline Elevator from Steamboat Landing to Hotel.



**PROMENADE ON DUFFERIN TERRACE**

The business part of the city under the hill. The St. Lawrence River and the hills beyond Lévis from Citadel.



**CHARLEMIN'S MONUMENT**

Erected on the east end of the Dufferin Terrace, on the site of the old St. Louis castle, where resided the French and English governors until it was destroyed by fire in 1871.



DUFFERIN TERRACE.

The crowd awaiting the arrival of the English Frigates from Hotel Chateau Frontenac



THE "OPHIR"

With Their Royal Highnesses on board, and the City of Levis in the background, from Quebec.





THE ENGLISH FRIGATES IN QUEBEC HARBOR

During the visit of the Duke and Duchess of Cornwall and York. View taken from Point Lévis.



THE TRIUMPHAL ARCH

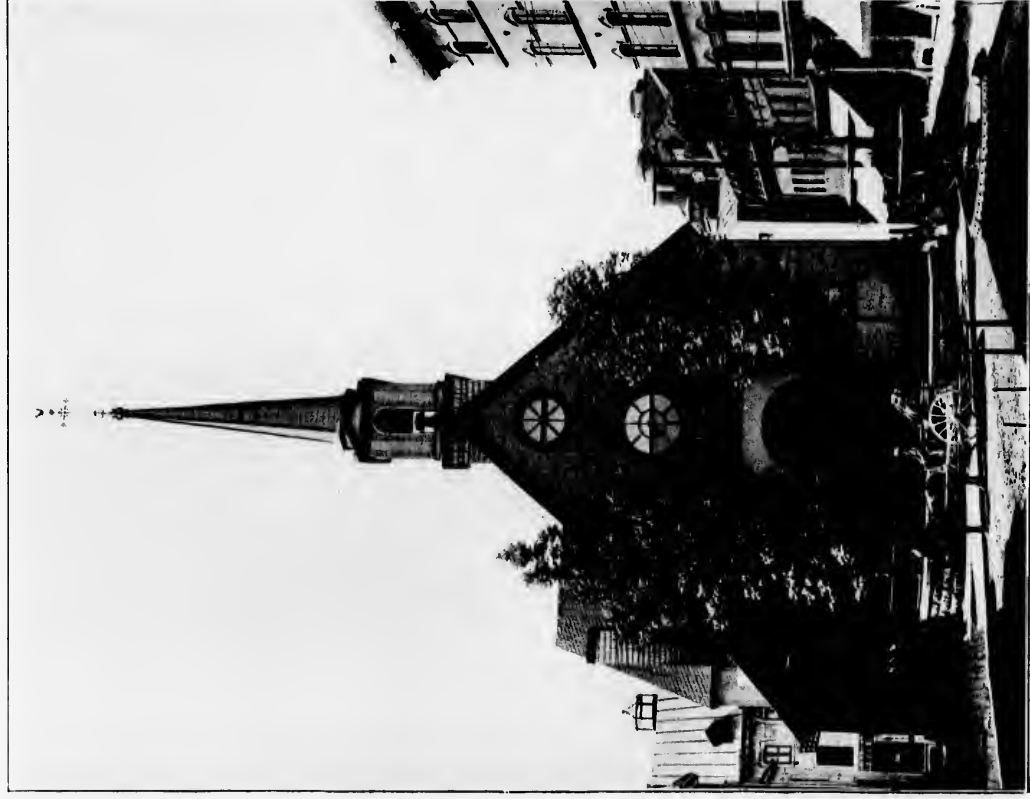
Erected on the Parliament Ground, in honor of Their Royal Highnesses the Duke and Duchess of Cornwall and York.



CITY HALL COURT HOUSE AND PLACE DE ARMS



INTERIOR OF ST. PATRICK'S CHURCH



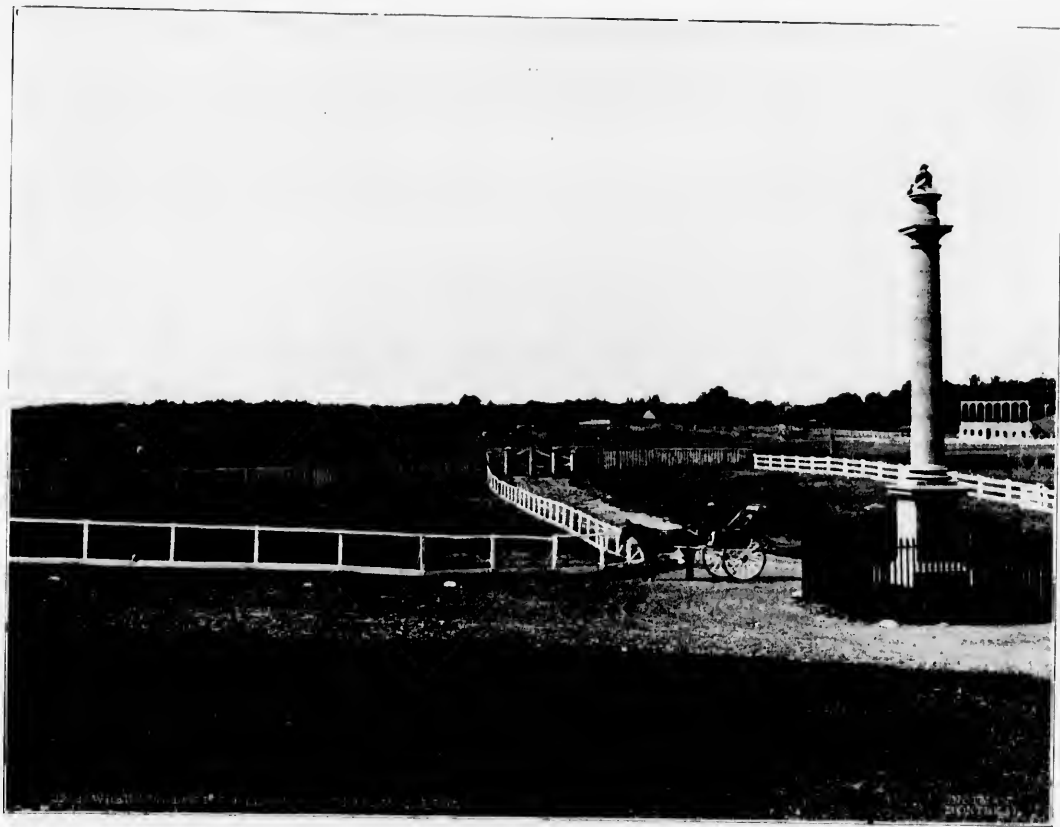
CHURCH OF NOTRE-DAME-DES-VICTORIES



VIEW FROM LAVAL UNIVERSITY

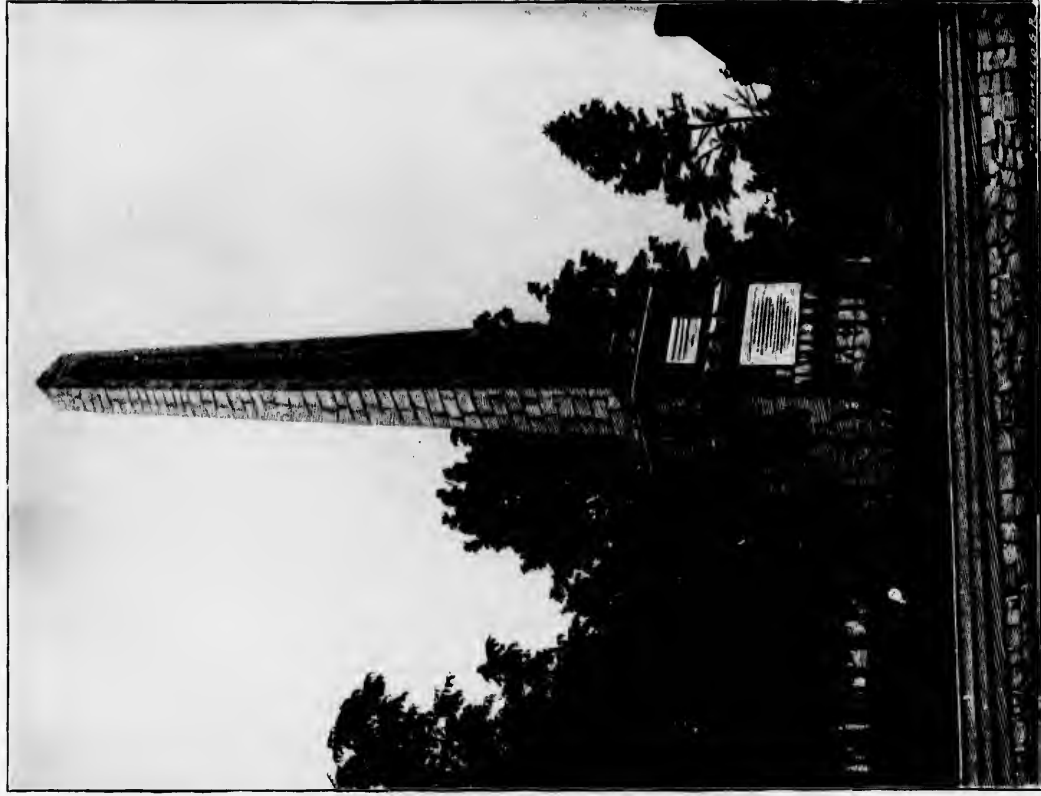


A MODERN CALACHE



PLAINS OF ABRAHAM, WHERE WOLFE DIED

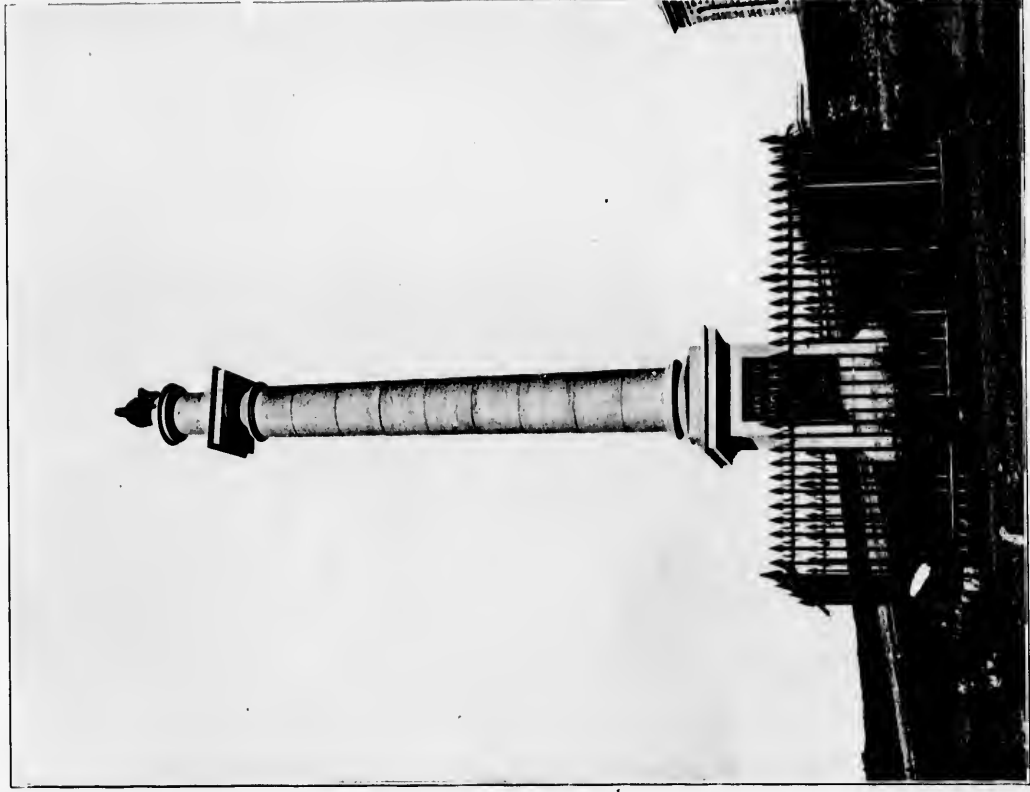




**THE WOLFE AND MONTCALM MONUMENT**

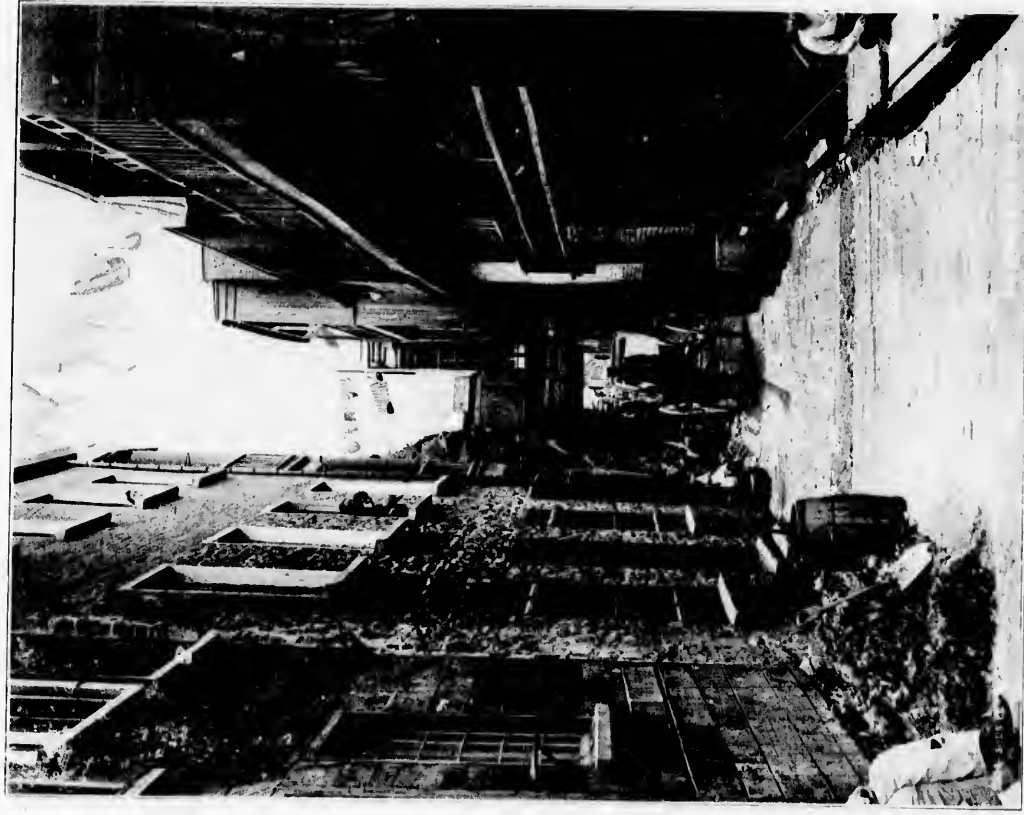
This monument was erected in Governors' Garden on the memory of Generals Wolfe and Montcalm, the English and French Generals who were both slain in the same battle on the Plains of Abraham on the 13th day of September, 1756, the English army being the victors.

and French Generals who were both slain in the same battle on the Plains of Abraham on the 13th day of September, 1759, the English army being the victors.

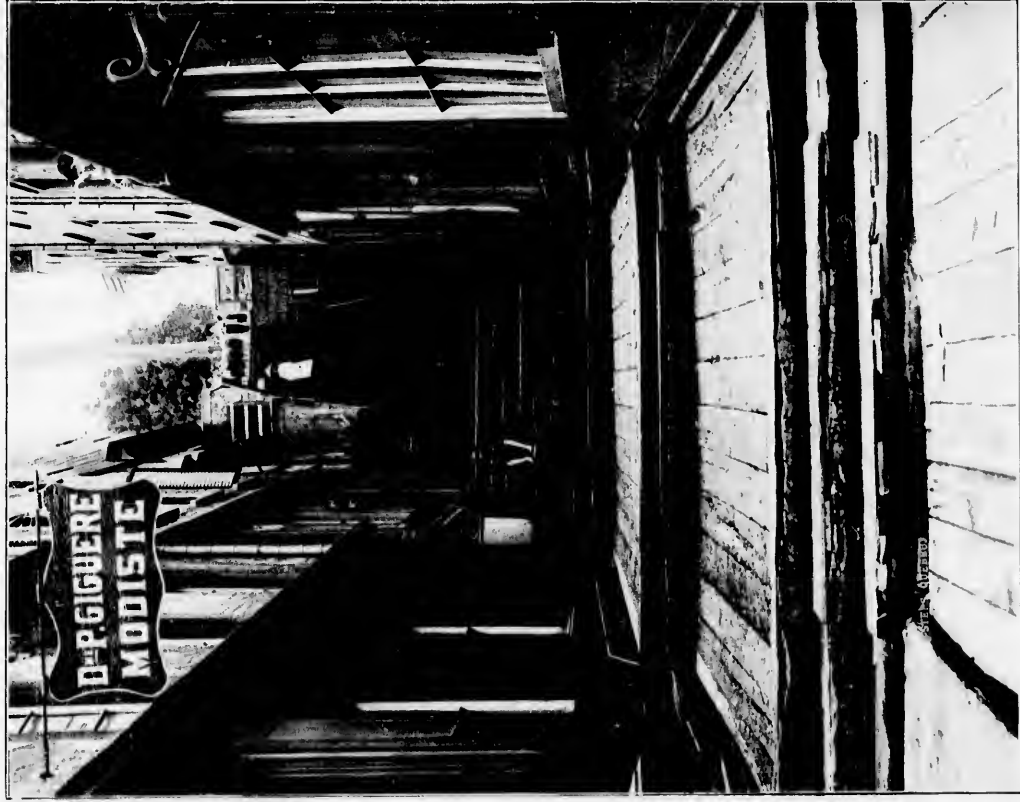


#### WOLFE'S MONUMENT

Erected in the year 1829 to mark the spot where Gen. Wolfe fell in his desperate conflict with Montcalm, the leader of the French forces at Quebec in the memorable battle on the Plains of Abraham, on the 13th of September, 1759, which resulted in the death of both Wolfe and Montcalm and decided the fate of Canada in favor of the English for all time to come.



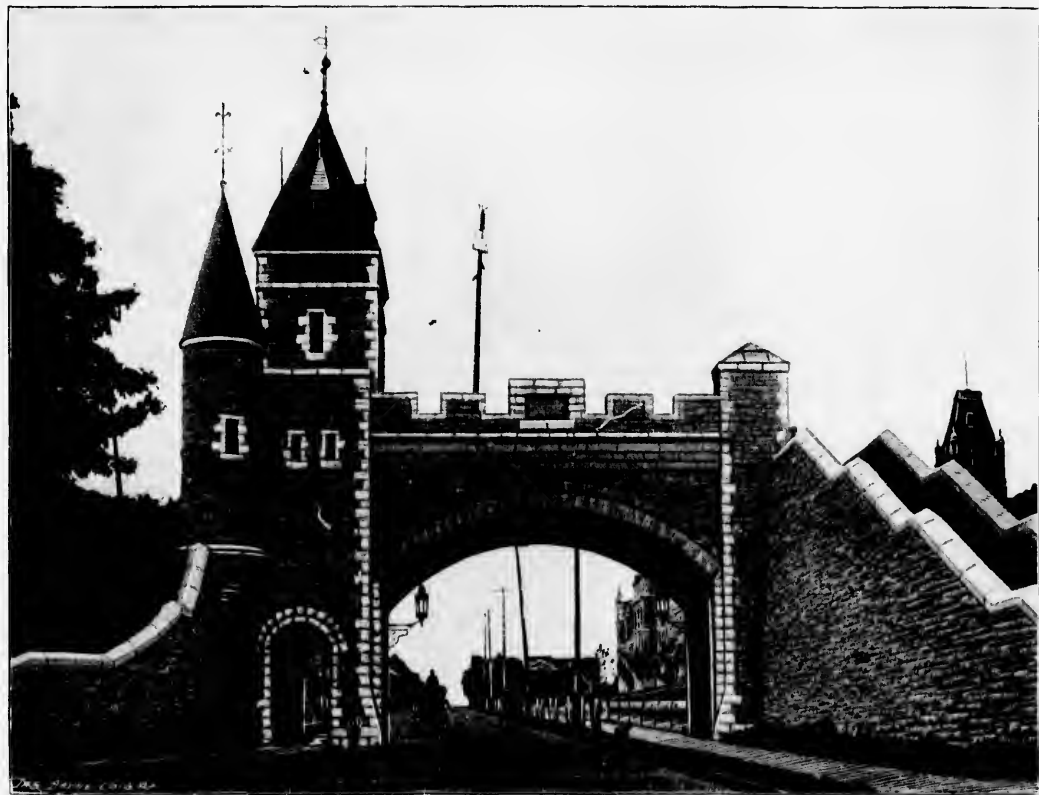
SOUS LE CAP STREET, QUEBEC



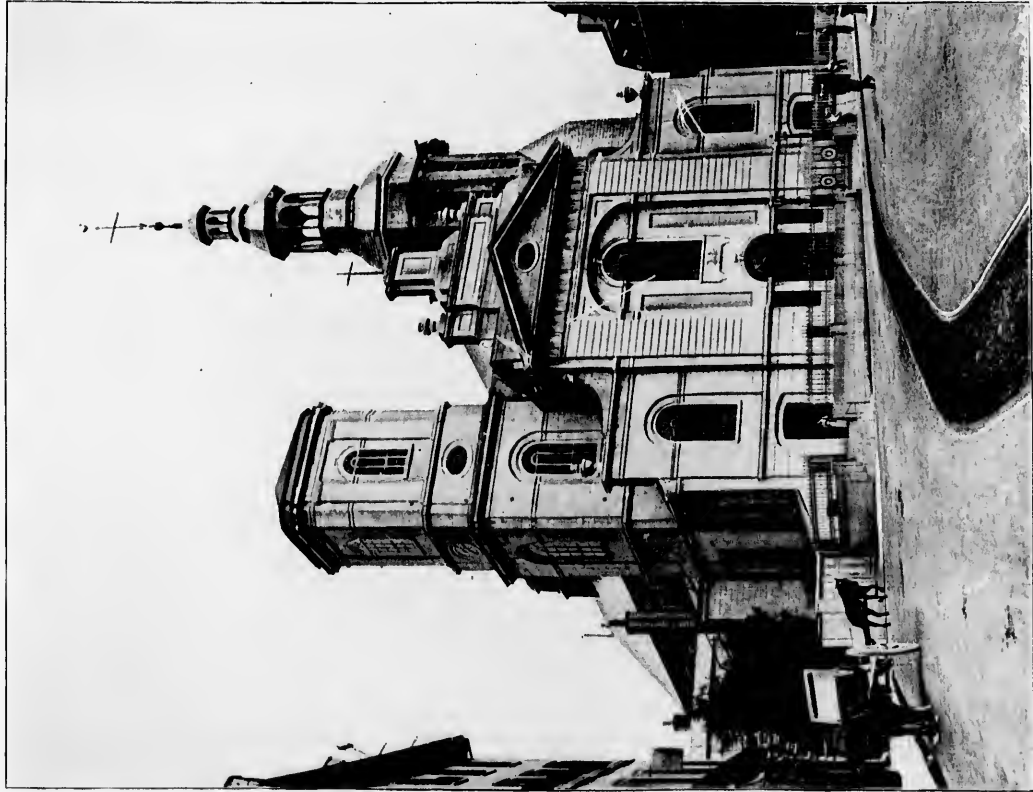
BREAK NECK STEPS



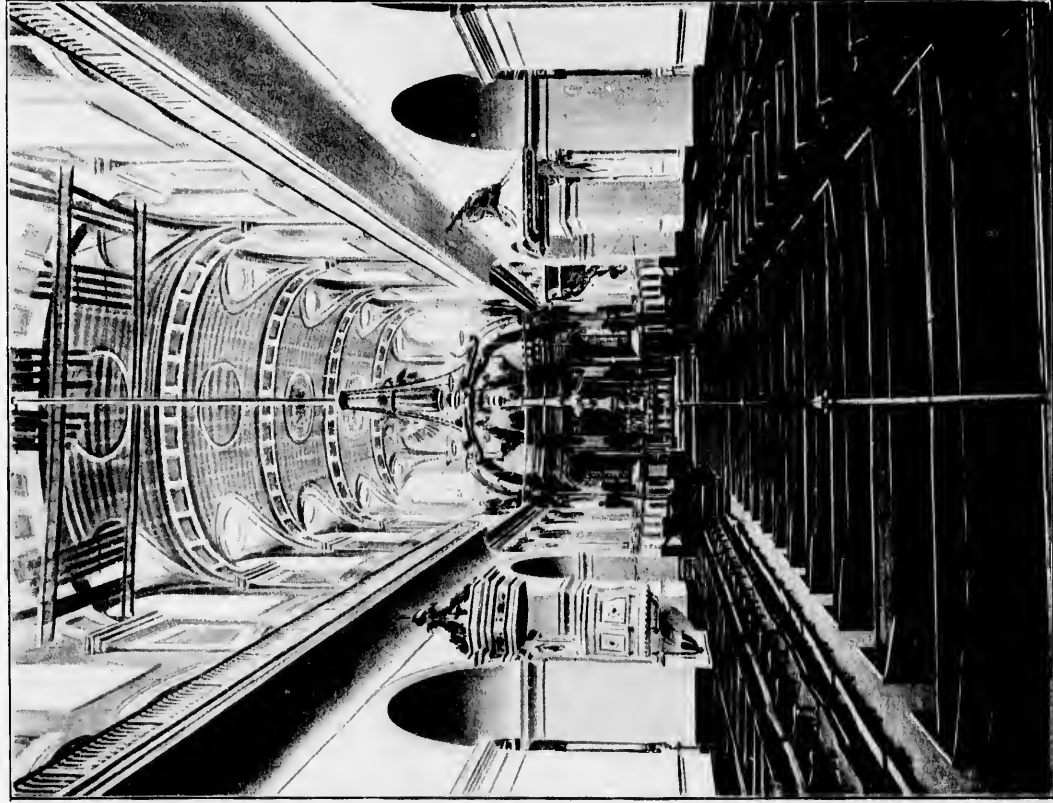
THE NEW KENT GATE



THE NEW ST. LOUIS GATE



THE FRENCH CATHEDRAL



INTERIOR OF THE FRENCH CATHEDRAL





KENT GATE AND THE LOWER PART OF THE CITY.

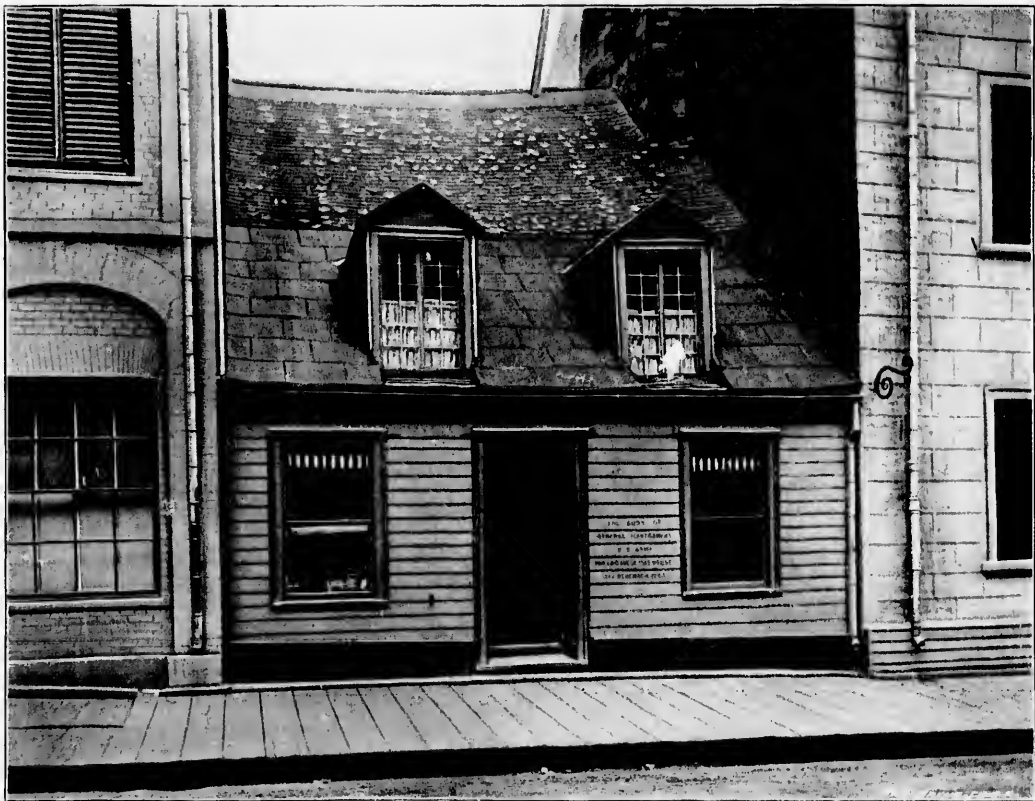
St. Charles River and a part of the City Wall from the Parliament Buildings.



PARLIAMENT BUILDING



CUSTOM HOUSE



THE OLD HOUSE

Where the body of General Montgomery was laid. This building was removed and a limestone block erected in its place, with a tablet bearing the same inscription that appeared on the old house.



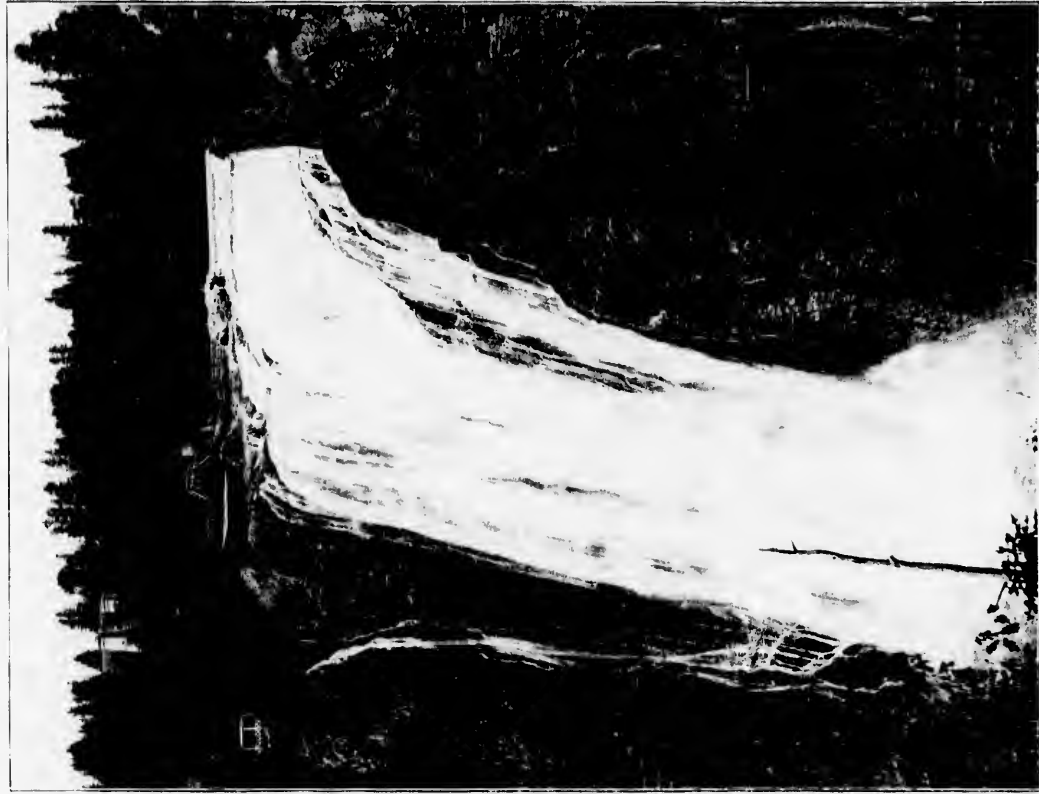
MONTCALM HOTEL

Where General Montcalm established his headquarters before the battle of the Plains of Abraham, in September, 1759.



HOTEL VICTORIA AND TURKO-RUSSIAN BATHS.

The new and modernized Hotel Victoria, with its swimming and Turko-Russian baths, offers to the visitor a home calculated to fully satisfy the most fastidious and exacting. It is located in the very heart of the city. Everything worth seeing is in its neighborhood and easy of access. It is also convenient to the railroads and steamboat landings. The manager is extremely courteous and accommodating.



THE FALLS OF MONTMORENCY JUST BELOW QUEBEC



NATURAL STEPS AT FALLS OF MONTMORENCY



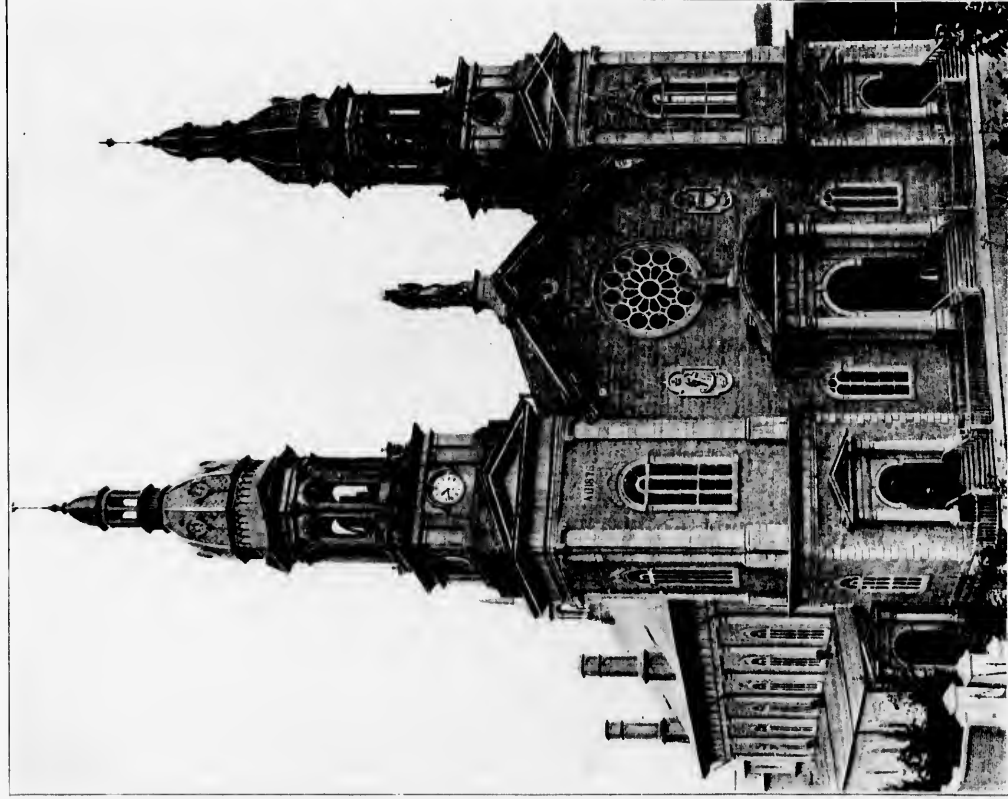


THE VILLAGE OF STE ANNE DE BEUPRE.

The world-renowned shrine of Ste. Anne de Beupre which attracts several hundred thousand pilgrims from all parts of the country every year.



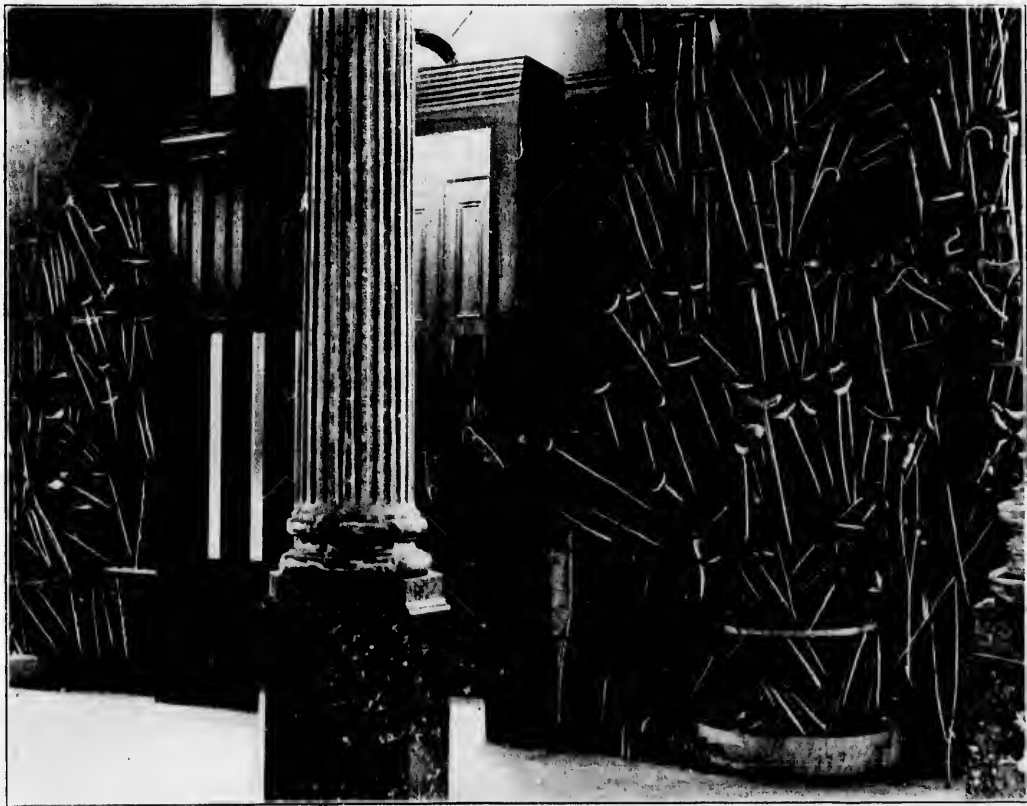
THE WAY OF THE CROSS  
Cemetery at Ste. Anne de Beaupre.



THE WORLD FAMED CHURCH OF STE. ANNE, DE BEAUFRE.

Where it is claimed that they have a relic of Ste. Anne, the grandmother of Christ, possessing great virtue for the healing of the sick, restoring the deaf and blind, also enabling the lame to walk without crutches. Whether there is any virtue in the "shrine" or not, it is a fact that many go there by the aid of staves and crutches and before leaving those them away and return home, believing they have been miraculously cured. For this fact or not the fame of the place attracts thousands of pilgrims. (C.P.P. 304).

Where it is claimed that they have a cure of St. Anne, the grandmother of Christ, who is said to be the patron saint of the sick, restoring the dead and blind, also enabling the lame to walk without crutches, and curing the deaf and dumb. It is a fact that many go there by the aid of staves and crutches, and that many of them are cured. For this reason and for the fact that thousands of pilgrims every year have been miraculously cured.



A FEW OF THE CRUTCHES, STAFFS AND BANDAGES USED BY INVALIDS AND CRIPPLES BEFORE MAKING THEIR PILGRIMAGE TO THE SHRINE OF STE. ANNE



MONUMENT TO THE BRAVES ON THE FOYE R. AC

Erected in 1830 to the memory of the brave English and French soldiers who fell in the second battle on the plains of Abraham in 1760 in which the French got the advantage. The monument is a bronze column standing upon a stone base surmounted by a statue of Bellona; it was a present from Prince Napoleon. The names of Murray and Lewis, the competing generals, appear on the face of the base. The attack was made by General Lewis in an attempt to conquer the English and retake the city, and although he was successful he could not force Murray, the English general, to capitulate. Beneath the monument are interred an immense number of the bones of those slain. The battle only lasted for an hour and three-quarters, but raged so fiercely that after it was over the ground was strewn with at least forty thousand of the dead soldiers.

537513

123

