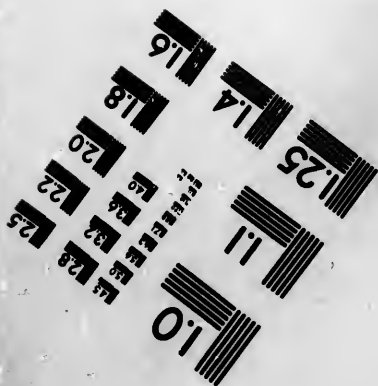
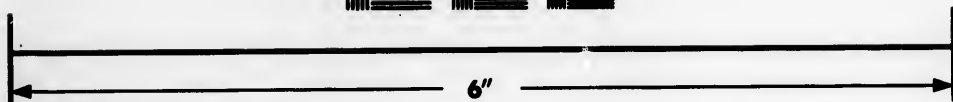
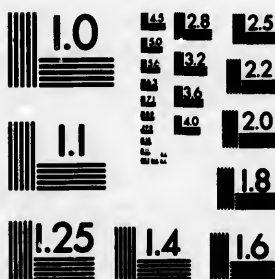


**IMAGE EVALUATION
TEST TARGET (MT-3)**



**Photographic
Sciences
Corporation**

23 WEST MAIN STREET
WEBSTER, N.Y. 14580
(716) 872-4503

**CIHM/ICMH
Microfiche
Series.**

**CIHM/ICMH
Collection de
microfiches.**



Canadian Institute for Historical Microreproductions / Institut canadien de microreproductions historiques

© 1984

Technical and Bibliographic Notes/Notes techniques et bibliographiques

The Institute has attempted to obtain the best original copy available for filming. Features of this copy which may be bibliographically unique, which may alter any of the images in the reproduction, or which may significantly change the usual method of filming, are checked below.

L'Institut a microfilmé le meilleur exemplaire qu'il lui a été possible de se procurer. Les détails de cet exemplaire qui sont peut-être uniques du point de vue bibliographique, qui peuvent modifier une image reproduite, ou qui peuvent exiger une modification dans la méthode normale de filmage sont indiqués ci-dessous.

- Coloured covers/
Couverture de couleur
- Covers damaged/
Couverture endommagée
- Covers restored and/or laminated/
Couverture restaurée et/ou pelliculée
- Cover title missing/
Le titre de couverture manque
- Coloured maps/
Cartes géographiques en couleur
- Coloured ink (i.e. other than blue or black)/
Encre de couleur (i.e. autre que bleue ou noire)
- Coloured plates and/or illustrations/
Planches et/ou illustrations en couleur
- Bound with other material/
Relié avec d'autres documents
- Tight binding may cause shadows or distortion along interior margin/
La reliure serrée peut causer de l'ombre ou de la distorsion le long de la marge intérieure
- Blank leaves added during restoration may appear within the text. Whenever possible, these have been omitted from filming/
Il se peut que certaines pages blanches ajoutées lors d'une restauration apparaissent dans le texte, mais, lorsque cela était possible, ces pages n'ont pas été filmées.
- Additional comments:/
Commentaires supplémentaires:

- Coloured pages/
Pages de couleur
- Pages damaged/
Pages endommagées
- Pages restored and/or laminated/
Pages restaurées et/ou pelliculées
- Pages discoloured, stained or foxed/
Pages décolorées, tachetées ou piquées
- Pages detached/
Pages détachées
- Showthrough/
Transparence
- Quality of print varies/
Qualité inégale de l'impression
- Includes supplementary material/
Comprend du matériel supplémentaire
- Only edition available/
Seule édition disponible
- Pages wholly or partially obscured by errata slips, tissues, etc., have been refilmed to ensure the best possible image/
Les pages totalement ou partiellement obscurcies par un feuillet d'errata, une pelure, etc., ont été filmées à nouveau de façon à obtenir la meilleure image possible.

This item is filmed at the reduction ratio checked below/
Ce document est filmé au taux de réduction indiqué ci-dessous.

10X	14X	18X	22X	26X	30X
<input type="checkbox"/>	<input type="checkbox"/>	<input type="checkbox"/>	<input type="checkbox"/>	<input type="checkbox"/>	<input checked="" type="checkbox"/>
12X	16X	20X	24X	28X	32X

The copy filmed here has been reproduced thanks to the generosity of:

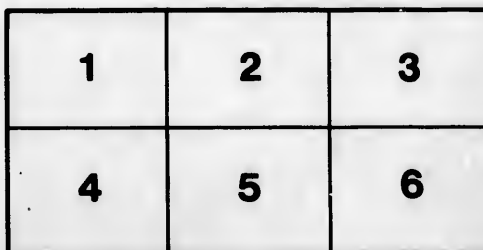
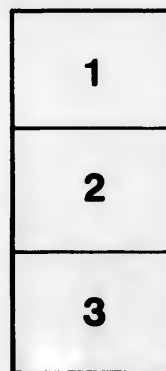
Metropolitan Toronto Library
Canadian History Department

The images appearing here are the best quality possible considering the condition and legibility of the original copy and in keeping with the filming contract specifications.

Original copies in printed paper covers are filmed beginning with the front cover and ending on the last page with a printed or illustrated impression, or the back cover when appropriate. All other original copies are filmed beginning on the first page with a printed or illustrated impression, and ending on the last page with a printed or illustrated impression.

The last recorded frame on each microfiche shall contain the symbol \rightarrow (meaning "CONTINUED"), or the symbol ∇ (meaning "END"), whichever applies.

Maps, plates, charts, etc., may be filmed at different reduction ratios. Those too large to be entirely included in one exposure are filmed beginning in the upper left hand corner, left to right and top to bottom, as many frames as required. The following diagrams illustrate the method:



L'exemplaire filmé fut reproduit grâce à la générosité de:

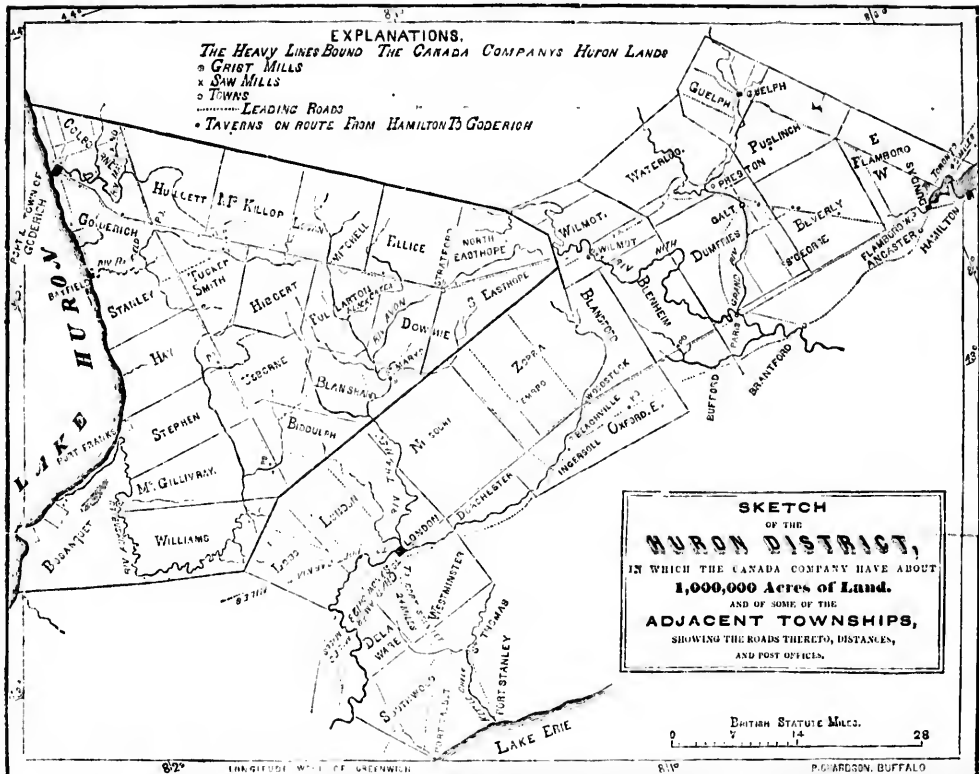
Metropolitan Toronto Library
Canadian History Department

Les images suivantes ont été reproduites avec le plus grand soin, compte tenu de la condition et de la netteté de l'exemplaire filmé, et en conformité avec les conditions du contrat de filmage.

Les exemplaires originaux dont la couverture en papier est imprimée sont filmés en commençant par le premier plat et en terminant soit par la dernière page qui comporte une empreinte d'impression ou d'illustration, soit par le second plat, selon le cas. Tous les autres exemplaires originaux sont filmés en commençant par la première page qui comporte une empreinte d'impression ou d'illustration et en terminant par la dernière page qui comporte une telle empreinte.

Un des symboles suivants apparaîtra sur la dernière image de chaque microfiche, selon le cas: le symbole \rightarrow signifie "A SUIVRE", le symbole ∇ signifie "FIN".

Les cartes, planches, tableaux, etc., peuvent être filmés à des taux de réduction différents. Lorsque le document est trop grand pour être reproduit en un seul cliché, il est filmé à partir de l'angle supérieur gauche, de gauche à droite, et de haut en bas, en prenant le nombre d'images nécessaire. Les diagrammes suivants illustrent la méthode.



Lands in Canada West, (late Upper Canada.)

THE ATTENTION OF
EMIGRANTS, OLD SETTLERS AND OTHERS,
 IS INVITED BY THE *CANADA COMPANY* TO THE
HURON DISTRICT,

CONTAINING ABOUT
ONE MILLION ACRES OF LAND,
IN ONE BLOCK,

Extending Westward from the Gore and Wellington Districts to the Shores of Lake Huron, which bounds it for sixty miles.

The Land in the Huron District is of the finest character, and of the description best adapted to the cultivation of Wheat. This District possesses advantages which render it peculiarly eligible to every class of Settler; scarcely a bad Farm is to be found upon it: it is well watered by living Streams, and the climate is most healthy. The principal Port is Goderich, the District Town, which has a population of about 900. There are here many good Stores or Shops, Mechanics, a considerable Grist-Mill, a Fulling and Carding Mill, places of Religious Worship, resident Clergymen, good Schools, where the higher branches of the Classics are taught, &c. &c.

The Harbour of Goderich, situated at the confluence of the River Mainland with Lake Huron, is a safe and commodious one, and

capable of admitting any vessel navigating Lakes Ontario, Erie and Huron; and when the Works now in progress for the improvement of the Navigation of the St. Lawrence are completed, produce may be shipped from Goderich to Quebec in vessels capable of navigating the ocean.

The Huron District is intersected by good Roads in various directions. There are two great leading Roads; one extending Eastward towards Hamilton, at the head of Lake Ontario, about sixty miles; the other Southerly, towards London, about forty-seven miles, where it will be met by the Plank Road between Hamilton and Port Sarina, now in progress. And in connection with the Boats on Lake Ontario—the Steam-bout EMERALD from Chippawa—Kent from Buffalo—and HURON from Sandwich, form a weekly water communication between Goderich and Quebec.

This District is admirably situated for securing the future prosperity of the Settler, from the advantages it possesses over more inland situations, through its water communication with the ocean, as Produce can be conveyed from Goderich to Montreal and Quebec for nearly the same charge as from places within thirty or forty miles land carriage of the Shipping Ports at the foot of Lake Ontario.

To the British Emigrant the Huron District possesses peculiar attractions, since the population is almost exclusively British; and an Emigrant from Great Britain or Ireland can hardly fail of meeting old neighbours already established in some part of the District; and the result of a natural feeling on the part of persons emigrating, is, that certain localities in this manner have here assumed a National character, one old neighbour or countryman inducing another to follow him; and thus are found in the Huron District, Settlements in which Highlanders, Lowland Scotch, English and Irish, each prevail: there is also a flourishing German Settlement.

One great inducement which the Huron District holds out to Old Settlers, is the manufacture of POTASH, and for which no land in the Province is so well adapted, as it is entirely timbered with the best kinds of HARD WOOD.

The Population of the Huron Tract for the year 1842, as shown by the Official Government Returns, was 9,177; being an increase on the previous year of 2,200 souls; and during the past year, the Lands disposed of by the Company exceeding 71,700 acres, have further increased it about 2,500 souls; which makes the present population, independent of natural increase, upwards of 11,600. And it is worthy of remark, as confirmatory of the advantages which the Huron District offers to the farmer, that upwards of one half of that increase consist of Old Settlers in the country, who have moved in from townships that were populous before the Huron District was even surveyed.

The Terms on which the Canada Company are now disposing of their Lands, are peculiarly favorable to the poorer classes, as they are offered on a credit of five years on payment of one-fifth of the purchase money down—the balance being then payable in five equal annual instalments, with interest; or on a Lease of Ten years. By this new plan, the Company DISPOSE OF THEIR LANDS BY WAY OF LEASE, FOR A TERM OF TEN YEARS—NO MONEY BEING REQUIRED DOWN. The Rents payable annually being less than the interest upon the price of the Lands—thus, for example, the price of 100 Acres, at 12s. 6d. per Acre, being £62 10s., the interest thereon will be £3, which latter sum, and no more, is the amount of Rent to be paid on the first of February in each year—full power being reserved to the Settler to purchase the Freehold, and take his Deed for the Land he occupies, at any time during the Lease, when most convenient to himself, at the price named in the Lease; and, of course, thereby save all future payment of Rents. The Company will, however, make a liberal deduction upon the price, if the Settler requires to purchase the Land before entering the tenth year of the Lease.

Upon 100 Acres, the price being 8s. 0d. per Acre, the whole Yearly Rent would be....	£1 17s. 6d. and no more.
..... 10s. 0d.	2 5 0
..... 11s. 3d.	2 12 6
..... 12s. 6d.	3 0 0
..... 13s. 9d.	3 7 0
..... 16s. 3d.	3 15 0
..... 17s. 6d.	4 2 6

SETTLERS' SAVINGS BANK ACCOUNT.

In order to afford every assistance to industrious and provident Settlers, the CANADA COMPANY will receive any sum, no matter how small the amount may be, for which their Lessee Settlers may not have immediate want, ON DEPOSIT—allowing interest at the rate of Six per cent. per annum for the same; but it is clearly understood, that the full amount, with interest accrued, shall at all times be at the disposal of the Settler, without notice. For this purpose the Company have opened an Account, which is termed "SETTLERS' PROVIDENT OR SAVINGS BANK ACCOUNT,"—thus affording to the prudent Settler every facility for accumulating sufficient money to purchase the Freehold of the Land which he LEASES, whenever he chooses to do so, within the term of Ten Years; but should bad Harvests, or any other unforeseen misfortunes visit him, he has always the amount deposited, with interest accrued, at his disposal to meet them. The advantages of this Account are confined to the Company's actual Lessee Settlers, during the continuance of their Leases; but with a view to the accommodation of Emigrants generally, they will allow interest at the rate of Four per cent. per annum for money left with them for any period not less than ninety days; but the amount thus deposited, with the interest accrued upon it, is always at the Emigrant's disposal, without notice.

The prices of the Company's Lands vary from 8s. to 15s. per acre. Some, from particular local advantages, are charged from 16s. 3d. to 20s.; but the average may be taken at 12s. 6d. per acre.

TABLE OF DISTANCES FROM HAMILTON TO GODERICH.

Via WILMOT,		MILES.	Via LONDON,		MILES.
Hamilton to Dundas,		5	Hamilton to Brantford,		26
" to Preston,		17	" to Oxford,		30
" to Hayville, in Wilmot,		17	" to London,		30
" to Stratford, in Easthope,		17	" to Goderich,		59
" to Mitchell, in Logan,		12½			
" to Goderich,		33			
101½					

Wagon-hire, with pair of Horses, carrying 18 cwt., per day,	£0 15 0
Do, do, do, do,	0 7 6
Stage-hire, for Passengers, about, per mile, each,	0 0 3

The centre of the Huron District is ninety miles South from the new Government Settlement in Owen's Bay.

The Huron District is fifty-five miles from Hamilton, at the head of Lake Ontario, and is twelve miles from London. Steamers ply daily from Lewiston and Niagara to Hamilton and Toronto, forty miles; and the distance by Railway from Buffalo to Lewiston, is 20 miles. There are also Steamers constantly passing from Rochester and Oswego to Toronto and Hamilton. The British steamboat Kent leaves Buffalo twice a-week for Port Stanley, on Lake Erie, distant 120 miles; London, by the plank road, is thence 24 miles.

The Canada Company have also about ONE MILLION of acres of Land, in Blocks containing from Three Thousand to Nine Thousand acres each, in the Western District; and in One and Two Hundred acre Lots scattered throughout almost every Township in Canada West.

Every information, and LISTS OF LANDS, may be obtained, free of charge, by applying (if by letter, Post-paid) to either of the COMPANY'S OFFICES, or to RICHARD BIRDSALL, Esq., Asphodel, Colborne District, Canada West.

CANADA COMPANY'S OFFICES,
Frederick-Street, Toronto, and Goderich, 21st May, 1844.

improvement
of navigating

ing Eastward
miles, where
boats on Lake
er communi.

r more Inland
d Quebec for
Ontario.

itish; and an
District; and
ad n National
ettlements in

ch no land in

g nn increase
res, have for.
0. And it is
alf of that in-
riety was even

er classes, as
ayable in five
OF THEIR
OWN. The
s, at 12s. 6d.
id on the first
d he occupies,
erby save all
s to purchase

more.

.....
.....
.....
.....
.....
.....
.....

sum, no mat-
ing Interest at
d, shall at all
ch is termed
ility for occu-
in the term of
, with Interest
ers, during the
e rate of Four
th the Interest

charged from

MILES.

..... 26
..... 30
..... 30
..... 59

145

Steamers ply
Lewiston, is 20
steamboat *Kent*
miles.

ussnd to Nine
y Township in

id) to either of

