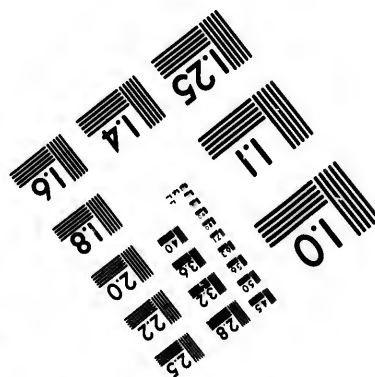
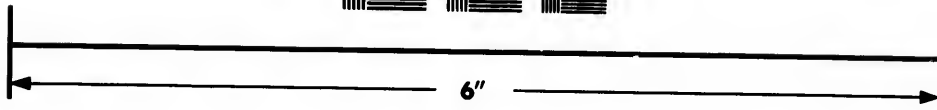
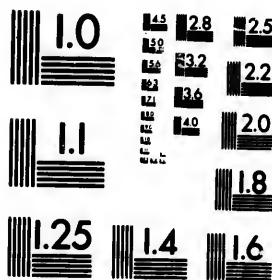


**IMAGE EVALUATION
TEST TARGET (MT-3)**



**Photographic
Sciences
Corporation**

23 WEST MAIN STREET
WEBSTER, N.Y. 14580
(716) 872-4503



**CIHM/ICMH
Microfiche
Series.**

**CIHM/ICMH
Collection de
microfiches.**



Canadian Institute for Historical Microreproductions / Institut canadien de microreproductions historiques



© 1986

Technical and Bibliographic Notes/Notes techniques et bibliographiques

The Institute has attempted to obtain the best original copy available for filming. Features of this copy which may be bibliographically unique, which may alter any of the images in the reproduction, or which may significantly change the usual method of filming, are checked below.

L'Institut a microfilmé le meilleur exemplaire qu'il lui a été possible de se procurer. Les détails de cet exemplaire qui sont peut-être uniques du point de vue bibliographique, qui peuvent modifier une image reproduite, ou qui peuvent exiger une modification dans la méthode normale de filmage sont indiqués ci-dessous.

- Coloured covers/
Couverture de couleur
- Covers damaged/
Couverture endommagée
- Covers restored and/or laminated/
Couverture restaurée et/ou pelliculée
- Cover title missing/
Le titre de couverture manque
- Coloured maps/
Cartes géographiques en couleur
- Coloured ink (i.e. other than blue or black)/
Encre de couleur (i.e. autre que bleue ou noire)
- Coloured plates and/or illustrations/
Planches et/ou illustrations en couleur
- Bound with other material/
Relié avec d'autres documents
- Tight binding may cause shadows or distortion
along interior margin/
La reliure serrée peut causer de l'ombre ou de la
distorsion le long de la marge intérieure
- Blank leaves added during restoration may
appear within the text. Whenever possible, these
have been omitted from filming/
Il se peut que certaines pages blanches ajoutées
lors d'une restauration apparaissent dans le texte,
mais, lorsque cela était possible, ces pages n'ont
pas été filmées.
- Additional comments:/
Commentaires supplémentaires:

- Coloured pages/
Pages de couleur
- Pages damaged/
Pages endommagées
- Pages restored and/or laminated/
Pages restaurées et/ou pelliculées
- Pages discoloured, stained or foxed/
Pages décolorées, tachetées ou piquées
- Pages detached/
Pages détachées
- Showthrough/
Transparence
- Quality of print varies/
Qualité inégale de l'impression
- Includes supplementary material/
Comprend du matériel supplémentaire
- Only edition available/
Seule édition disponible
- Pages wholly or partially obscured by errata
slips, tissues, etc., have been refilmed to
ensure the best possible image/
Les pages totalement ou partiellement
obscurcies par un feuillet d'errata, une pelure,
etc., ont été filmées à nouveau de façon à
obtenir la meilleure image possible.

This item is filmed at the reduction ratio checked below/
Ce document est filmé au taux de réduction indiqué ci-dessous.

10X	12X	14X	16X	18X	20X	22X	24X	26X	28X	30X	32X
					✓						

ire
détails
es du
modifier
er une
filmage

The copy filmed here has been reproduced thanks to the generosity of:

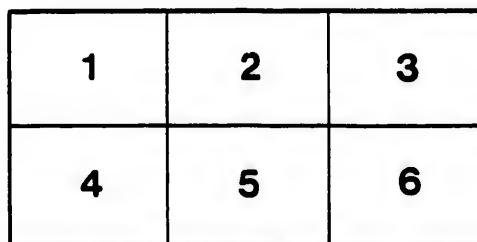
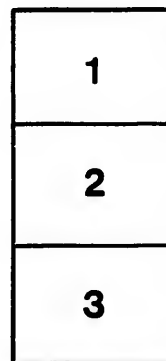
D. B. Weldon Library
University of Western Ontario
(Regional History Room)

The images appearing here are the best quality possible considering the condition and legibility of the original copy and in keeping with the filming contract specifications.

Original copies in printed paper covers are filmed beginning with the front cover and ending on the last page with a printed or illustrated impression, or the back cover when appropriate. All other original copies are filmed beginning on the first page with a printed or illustrated impression, and ending on the last page with a printed or illustrated impression.

The last recorded frame on each microfiche shall contain the symbol \rightarrow (meaning "CONTINUED"), or the symbol ∇ (meaning "END"), whichever applies.

Maps, plates, charts, etc., may be filmed at different reduction ratios. Those too large to be entirely included in one exposure are filmed beginning in the upper left hand corner, left to right and top to bottom, as many frames as required. The following diagrams illustrate the method:



L'exemplaire filmé fut reproduit grâce à la générosité de:

D. B. Weldon Library
University of Western Ontario
(Regional History Room)

Les images suivantes ont été reproduites avec le plus grand soin, compte tenu de la condition et de la netteté de l'exemplaire filmé, et en conformité avec les conditions du contrat de filmage.

Les exemplaires originaux dont la couverture en papier est imprimée sont filmés en commençant par le premier plat et en terminant soit par la dernière page qui comporte une empreinte d'impression ou d'illustration, soit par le second plat, selon le cas. Tous les autres exemplaires originaux sont filmés en commençant par la première page qui comporte une empreinte d'impression ou d'illustration et en terminant par la dernière page qui comporte une telle empreinte.

Un des symboles suivants apparaîtra sur la dernière image de chaque microfiche, selon le cas: le symbole \rightarrow signifie "A SUIVRE", le symbole ∇ signifie "FIN".

Les cartes, planches, tableaux, etc., peuvent être filmés à des taux de réduction différents. Lorsque le document est trop grand pour être reproduit en un seul cliché, il est filmé à partir de l'angle supérieur gauche, de gauche à droite, et de haut en bas, en prenant le nombre d'images nécessaire. Les diagrammes suivants illustrent la méthode.

errata
to

pelure,
on à



VOTERS' LIST, 1897.

Township of Moore.

Polling Sub-Division No. 1.

SCHEDULE OF POST OFFICES.—1, Bickford; 2, Bridgen; 3, Court-right; 4, Corunna; 5, Colinville; 6, Kimball; 7, Logierait; 8, Moore; 9, Osborne; 10, Ossian; 11, Petrolea; 12, Seckerton; 13, Sykeston; 14, Sarnia; 15, Waubuno.

POLLING SUB-DIVISION NO. 1.—Comprising Lots 1 to 25, Front Concession, both inclusive, and south side of Milton Street in Courtright village; and Lots 21 to 29, both inclusive, in the 1st, 2nd and 3rd Concessions. Polling in Cathcart's Hall, in Courtright.

PART NO. 1.—Persons entitled to vote at both Municipal Elections and Elections to the Legislative Assembly.

No. ON ROLL	Juror.	NAME AND OCCUPATION.	LOT, CONCESSION OR STREET	Owner, Tenant, F.S.M.F	P. O. Address
1146	J	Aitkin William, blacksmith	5 & 21 Cath. ay, Courtri't	M F, O	3
1148	J	Aitkin Andrew, carpenter	23 & 25 Cath ay, Courtri't	M F, O	3
221	J	Allingham Jno A, farmer	w qr 26, 3	M F, O	3
1083	J	Bowen Wm H, farmer	n hf 4, front	M F, F	1
1110	J	Bedard Charles "	16 & 17, front	M F, Jt O	3
1111	J	Bedard Peter "	Gore 29, 3	M F, Jt O	3
1112	J	Bedard Wm Jr "	s hf 20, Front.	M F, Jt O	3
1117	J	Bedard Wm "	s hf 18, n hf 19, Front	M F, O	3
140	J	Burns Frank "	e hf 24, 2	M F, T	3
277		Barberry Irwin, laborer	s pt Gore 29, 3	M F, O	3
1151		Bogle Andrew, sailor	31 Cath. ay, Courtright	M F, Jt O	3
1240	J	Carter T H, farmer	w pt 24, Front	M F, O	3
1136	J	Cathcart Wm A, merchant	3 & 4 Cath. ay., Courtri't	M F, O	3
216	J	Clark Thomas, farmer	w qr 22, 3	M F, O	3
206	J	Connor Alexander, farmer	e hf 21, 3	M F, Jt O	3
210	J	Coyle James M, farmer	e hf 21, 3	M F, Jt O	3
136	J	Coyle James, farmer	w pt 22, 2	M F, O	3
137	J	Chowan John, farmer	e hf w hf 22, 2	M F, O	3
207	J	Connor John, farmer	e hf 21, 3	M F, Jt O	3
209	J	Coyle Chas J, farmer	w hf 21, 3	M F, Jt O	3
211	J	Coyle Chas J jr, farmer	w hf 21, 3	M F, Jt O	3
134	J	Coyle Jno P, railroad man	w hf 22, 2	M F, Jt O	3
217	J	Chowan Samuel, farmer	e hf 23, 3	M F, O	3
223	J	Cockerlin Charles, farmer	e qr 28, 3	M F, O	3
212	J	Coyle Thomas H, farmer	w hf 21, 3	M F, Jt O	3

TOWNSHIP OF MOORE.

No. ON ROLL	Juror.	NAME AND OCCUPATION.	LOT, CONCESSION OR STREET	Owner, Tenant, F.S., M.F.	P. O. Address
1116	J	Denomy George, farmer	n hf 18, s hf 19, front	M F, T	3
1120	J	Denomy William, farmer	21, Front	M F, T	3
1157	J	Dale Robert, gentleman	39, 41, 43, 45, Cath Sy., Co'tr't	M F, T	3
1130	J	Evens Arnold, farmer	n e pt 24, front	M F, O	3
1080	J	Everette Adam T, farmer	3, front	M F, Jt O	3
1081	J	Everette Francis E, farmer	3, front	M F, Jt O	3
149	J	Ferguson John, farmer	e pt 26, 2	M F, O	3
1143	J	Foster John, farmer	7, Cath. Sy., Courtright	M F, T	3
1108	J	German William, farmer	16 & 17, front	M F, Jt T	3
1109	J	German Joseph, farmer	16 & 17, front	M F, Jt T	3
1133		Harris Wm J, carpenter	19 Evens' Sy., Courtright	M F, O	3
1140		Hurst Irwin, gentleman	e pt 26, front	M F, O	3
1142		Humphrey John, baker	9, Cath. Sy., Courtright	M F, F	3
144	J	James William, farmer	e hf w hf 24, 2	M F, O	3
1105	J	Jenkins Alexander, farmer	13, front	M F, Jt O	3
1106	J	Jenkins William, farmer	s hf 22, 13, front	M F, Jt O	3
1121	J	Jenkyns Robert, farmer	n hf 22, front	M F, O	3
76	J	Johnston Alfred D, farmer	27, 1	M F, Jt O	1
1149	J	Johnston Robert, farmer	27, Cath. Sy., Courtright	M F, O	3
1129	J	Johnston Stewart, farmer	n e pt 24, front	M F, O	3
1126	J	Johnston George, farmer	s pt 24, front	M F, Jt O	3
1125	J	Johnston William, farmer	s pt 24, front	M F, Jt O	3
1123	J	Johnston John, farmer	s pt 24, front	M F, Jt O	3
1124	J	Johnston James S, farmer	s pt 24, front	M F, Jt O	3
147	J	Johnston David M, farmer	w hf 25, 2	M F, O	3
75	J	Johnston Frederick, farmer	27, 1	M F, Jt O	1
1128	J	Johnston Hugh, farmer	centre pt 24, front	M F, O	3
1147	J	Johnston David H, farmer	23, Cath. Sy., Courtright	M F, O	3
1141		Kerr James, baker	9, Cath. Sy., Courtright	M F, T	3
224	J	Luckey Andrew, farmer	w hf e hf 28, 3	M F, O	3
1087	J	Leslie George, farmer	6, front	M F, O	3
68	J	Lumley Thomas, farmer	e hf 25, 1	M F, Jt O	1
69	J	Lumley, John E, farmer	e hf 25, 1	M F, Jt O	1
70	J	Lumley William, farmer	w hf 25, 1	M F, Jt O	1
71	J	Lumley John H, farmer	w hf 25, 1	M F, Jt O	1
72	J	Lumley Wm J, farmer	w hf 25, 1	M F, Jt O	1
138	J	Long George, farmer	e pt 23, 2	M F, O	3
139	J	Long Luke, farmer	w pt 22, 2	M F, O	3
1077	J	Moran Patrick, farmer	e pts 1 & 2, front	M F, O	1
1078	J	McBride William, farmer	w hf 1 & 2, front	M F, O	1
1093	J	McBeth James E, farmer	s hf 8, front	M F, T	1
1094	J	McBeth James, farmer	s hf 8, front	M F, O	1
1095	J	McBeth David, farmer	n hf 8, s hf 7, front	M F, T	1
1198	J	Mathews Frank, laborer	37, Cath. Sy., Courtright	M F, T	3
151	J	Moore John, farmer	w qr 26, 2	M F, O	3
152	J	McRae Murdock, farmer	e pt 27, 2	M F, O	3
153	J	McRae Duncan, sailor	centre pt 27, 2	M F, O	3

TOWNSHIP OF MOORE.

3

No. ON ROLL	Juror.	NAME AND OCCUPATION.	LOT, CONCESSION OF STREET	Owner, Tenant. F.S., M.F.	P. O. Add ^d
155	J	Milligan Benjamin, farmer	e pt 28, 2	M F, Jt O	3
156	J	Milligan John, farmer	w hf 28, 2	M F, Jt O	3
157	J	Milligan William, farmer	w hf 28, 2	M F, Jt O	3
220	J	Munday Mark, farmer	24, 3	M F, O	3
222	J	McPherson Alex, farmer	s hf 27, 3	M F, O	3
1097	J	Neal John R, farmer	n hf 10, front	M F, O	3
1100	J	Neal James S, sailor	s hf 10, 11, front	M F, O	3
1104	J	Neal William D, sailor	s hf 15, front	M F, O	3
150	J	Neal Samuel, farmer	centre pt 28, 2	M F, O	3
1122	J	Neal Alvin, farmer	n w cor 23, front	M F, O	3
215	J	Rankin Stephen, farmer	w qr 22, 3	M F, Jt T	3
213	J	Robillard Joseph, farmer	e hf 22, 3	M F, O	3
140	J	Rumbold Charles, farmer	e pt 25, 2	M F, O	3
1079	J	Reynolds Edwd M, farmer	w hf 1, 2, front	M F, Jt O	1
1096	J	Ross Oakley, farmer	9, front	M F, O	3
73	J	Rankin Arthur, farmer	w hf 26, 1	M F, O	3
214	J	Rankin Hiram, farmer	w qr 22, 3	M F, Jt T	3
143	J	Smith Abraham, farmer	w hf 24, 2	M F, O	3
1084	J	Selby Arthur, farmer	5, front	M F, T	1
1085	J	Stockdale Robert, farmer	8, front	M F, O	1
1086	J	Stockdale Frank, farmer	5, front	M F, Jt O	1
1090	J	Selby Wm F, farmer	n hf 7, front	M F, O	1
1103	J	Stockdale George, farmer	12, front	M F, O	3
1107	J	Stockdale John, farmer	n hf 15, front	M F, O	3
1113	J	Stewart George, farmer	s hf 18, front	M F, O	3
1158	J	Selby John P, farmer	17, Cath Sy, Courtright	M F, O	3
142	J	Smith James, farmer	w qr 24, 2	M F, O	3
1098	J	Tolea William, farmer	11, s hf 10, front	M F, T	3
132	J	Taylor George A, farmer	w pt 21, 2	M F, O	3
148	J	Trapp John, farmer	e pt 26, 2	M F, T	3
225	J	Trapp John, farmer	w hf 28, 3	M F, T	3
226	J	Trapp Robt, farmer	w hf 28, 3	M F, Jt T	3
219	J	Williams Henry, farmer	24, 3	M F, T	3
1134	J	Wanless J W, station agent	5-14, Evans' Sy, Courtr't	M F, O	3
154	J	Wiley William, farmer	w pt 27, 2	M F, O	3

PART NO. 2.—Persons entitled to vote at Municipal Elections only.—
Polling Sub Division No. 1.

1150	Bogle Mrs Jane, m. w.	31 Cath Sy, Courtright	Owner	3
1135	Bartlett William, customs	5-14, 4-15, Evans' ay, Court.	Owner	3
208	Connor Mrs Ann, widow	e hf 21, 3	Jt Owner	3
1144	Clark Mrs Susan	7, Cath ay, Courtright	Owner	14
1139	Clark John S, gardener	11, Cath ay, Courtright	Owner	14
141	Green William	e hf 24, 1	Owner, St. Thomas	
1252	Gurd A T, oil operator	pt s hf 24, front	Owner, Petrolea	
145	James Mrs Ellen, m. w.	e pt 25, 2	Jt Owner	3
66	Kerr James, oil operator	21, 22, 23, 1	Owner, Petrolea	

TOWNSHIP OF MOORE.

No. ON ROLL	Juror	NAME AND OCCUPATION.	LOT, CONCESSION OF STREET	Owner, Tenant, F.S., M.F.	P. O. Add.
1091		McMahon W H	w pt e hf 1, 2, front	Owner, London	
1099		Neal Mrs Henrietta, widow	11, front	Owner	3
1101		Neal Miss Harriett, spinster	16, 17, Gurd sy., Courtr't	Owner	3
1145		Neal Mary Mrs, widow	18, 15, Cath sy, Courtri't	Owner	3
1114		Stewart Miss Mary, spinster	25 pt Evans' sy, front	Owner	3
1118		Smith Frank	20, front	Owner	14
133		Taylor Miss Ann, spinster	w pt 21, 2	Jt Owner	3
1092		Whay Mrs Ellen, widow	s hf 4, front	Owner, Forest	

PART NO. 3.—Persons entitled to vote at Elections to the Legislative Assembly only.—Polling Sub-Division No. 1.

1102		Bell John, lumberman	12, front	M F	1
1138		Currie John, engineer	s w pt 26, front	M F	3
77		Egan John, laborer	27, 1	M F	1
1082		Grassford James A, farmer	s hf 4, front	M F	1
1137		Hughes Edward, wiper	s w pt 26, front	M F	3
1115		Flood Walter B, sailer	s hf 18, front	M F	3
1119		Johnson Froome, farmer	n hf 20, front	T M F	3
1088		McDougal Peter, farmer	6, front	M F	1
1089		McDougal Donald, farmer	6, front	M F	1
231		Queen Thomas, farmer	n hf 27, 3	M F	3
67		Scales Thomas, laborer	24,	M F	1
74		Smith James, farmer	w hf 26, 1	M F	1
218		Whitsett George, farmer	w hf 23, 3	M F	3
1131		Webb Joseph, laborer	w pt 25, front	M F, O, Delray	3
228		Walker John, laborer	centre Gore 29, 3	M F	3
229		Walker James, laborer	centre Gore 29, 3	M F	3
230		Walker James, laborer	centre Gore 29, 3	M F	3

Polling Sub-Division No. 2.

SCHEDULE OF POST OFFICES.—3, Courtright; 6, Kimball.

POLLING SUB-DIVISION NO. 2.—Comprising all of Courtright north of Milton Street and Front Concession, from Milton Street to Lot 30, inclusive, in the Front Concession; and Lots No. 19 to 29, both inclusive, in the 4th and 5th Concessions. Polling in Stewart's Hall, Courtright.

PART NO. 1.—Persons entitled to vote at both Municipal Elections and Elections to the Legislative Assembly.

No ON ROLL	JUROR.	NAME AND OCCUPATION.	LOT, CONCESSION OF STREET	(Owner, Tenant, F.S., M.F)	P. O. Add ^s
1161	J	Bedard Edward, merchant	7, McD's sy, Courtright	M F, O	3
1167	J	Bedard Alex, hotel keeper	1, 2, 6, Cath sy, Court.	M F, T	3
1191	J	Bentley Anderson, merchant	53, McD's sy, Courtright	M F, O	3
1230	J	Busha Henry P, sailor	42n, 43n, 44n, Gurd's sy	M F, O	3
391	J	Bertrand A C, ins. agent	e hf w hf 27, 5	M F, O	3
1247	J	Burtin Thomas, carpenter	n thrd 28, front	M F, O	3
390	J	Brown Robert B, farmer	w hf 26, 5	M F, O	3
320	J	Brown Elisha, farmer	w hf 29, 4	M F, O	3
1180	J	Beasley Andrew, rail'd man	25, McD's sy, Courtright	M F, T	3
306	J	Carr James, farmer	w qr 25, 4	M F, Jt O	3
307	J	Carr John, farmer	w qr 25, 4	M F, Jt O	3
561	J	Cassin Lawrence, farmer	n qr 19, 5	M F, O	6
385	J	Carr John, farmer	s 3-qrs e hf 25, 5	M F, Jt O	2
1245	J	Charlton W W, farmer	s pt 28, front	M F, O	3
1179	J	Cronk Asa, customs	18, 19, 20, McD's sy, Court.	M F, T	3
1185	J	Clinkman John, wagon mkr	31, 32, 33, McD's sy, Court.	M F, O	3
1197	J	Cronkhite Nathan, merchant	w hf 6, 3, 61, McD's sy, Ct	M F, O	3
1199	J	Clinkman Frederick, blks'ith	5n, 7n, Gurd's sy, Court't	M F, O	3
1219	J	Clinkman James, blacksmith	20, 21, 22, 23n, Gurd's sy, Ct	M F, O	3
1234	J	Chambers David, laborer	51, Gurd's sy, Courtright	M F, O	3
394	J	Courtney Angus, farmer	centre 29, 5	M F, O	3
393	J	Coyle James J, farmer	w hf 28, 5	M F, O	3
373	J	Cassin Michael, farmer	s hf n hf 19, 5	M F, O	3
377	J	Cassin William, farmer	pt w hf 22, 5	M F, O	3
1175	J	Crawford Dr D T, physician	12, pt 13, McD's sy, Court.	M F, O	3
304	J	Dunn Frederick, farmer	w hf 24, 4	M F, Jt O	3
1160	J	Dale George, druggist	n pt 8, McD's sy, Court't	M F, O	3
1166	J	Drown William S, laborer	pt e pt s hf 26, front	M F, O	3
1239	J	Dale George, farmer	n w cor s pt 28, front	M F, O	3
1170	J	Davidson David, hotel keeper	4, w pt 10, McD's sy, Ct	M F, Jt O	3
384	J	Donahue Michael, farmer	e hf 24, 5	M F, T	3
288	J	Duggan Robert, farmer	e qr 19, 4	M F, O	6
292	J	Duggan John, farmer	e hf 21, 4	M F, Jt O	6
293	J	Duggan David, farmer	e hf 21, 4	M F, Jt O	6
303	J	Dunn Frederick T, farmer	w qr 19, 4	M F, Jt O	3
305	J	Dunn Charles, farmer	w qr 19, 4	M F, Jt O	3
1152	J	Dunn John sr, laborer	8, 10, 12, Cath. sy, Court.	M F, O	3
1153	J	Dunn John jr, laborer	44, Cath. sy, Courtright	M F, O	3
1186	J	Dunn William, laborer	C, McD's sy, Courtright	M F, T	3
392	J	Ford James, farmer	e hf w hf 28, 5	M F, O	3
289	J	Ford John, farmer	centre 19, 4	M F, O	3

No. ON ROLL	Juror	NAME AND OCCUPATION.	LOT, CONCER- SION OR STREET	Owner, Tenant, F.S., M.F.	P. O Add'ess
1181	J	Foster James, farmer	26 & 27, McD's ay, Court.	M F, T	3
1171	J	Fitzgibbons Wm, hotel kpr	4, McD's ay, Courtright	M F, Jt O	3
1196		Gallerneau Alex'r, laborer	16, McD's ay, Courtright	M F, O	3
1211	J	Green H H sr, grn merchant	57, Gurd's ay, Courtright	M F, T	3
1204	J	Green H H jr, merchant	6n, Gurd's ay, Courtright	M F, T	3
295	J	Gilford James, farmer	22, 4	M F, T	3
1217		Henderson William, sailor	15r, Gurd's ay, Court.	M F, T	3
1156	J	Huff John, shoe maker	28, 30, Cath. ay, Court.	M F, O	3
1163	J	Hyde John, hotel keeper	65, 66, 67, McD's ay, Court.	M F, O	3
1224	J	Hall James, saddler	38, 39, 40, 41, Gurd's ay, Ct	M F, T	3
1164		Hyde Frank, hotel keeper	65, 66, 67, 68, McD's ay, Ct	M F, O	3
1177	J	Heyland Robert, merchant	17, McD's ay, Courtright	M F, T	3
1174	J	Havers Thomas, butcher	10, 11, McD's ay, Court.	M F, O	3
1243	J	Hall John, laborer	60, Gurd's ay, Courtright	M F, O	3
310	J	Hadden William, farmer	e hf 27, 4	M F, O	3
1168	J	Howes Charles, barber	24, McD's ay, Courtright	M F, T	3
1184	J	Hitchcock John, laborer	28, 29, McD's ay, Court.	M F, O	3
298	J	Ingles John, farmer	e hf 23, 4	M F, O	3
1220		Irwin Andrew, cooper	11n, Gurd's ay, Courtright	M F, O	3
1237	J	Johnston Thos, gentleman	5, Charlton ay, Courtright	M F, O	3
374	J	Jarvis Gilbert, farmer	s e qr 19, 5	M F, O	6
302	J	Johnston Jas, baggageman	e qr 24, 4	M F, O	3
1251	J	Kittermaster James, farmer	30, front	M F, O	3
1194	J	Kerby Nelson, merchant	59, e hf 60, McD's ay, Ct	M F, O	3
1173	J	Kerby Alexander, merchant	2, McD's ay, Courtright	M F, O	3
1188	J	Leclair Charles, carpenter	e, McD's ay, Courtright	M F, O	3
1187	J	Long Edward, gentleman	w y a 1, a 3, McD's ay, Ct	M F, O	3
1208	J	Lott M J jr, miller	1, 2, Gurd's ay, Court.	M F, Jt O	3
1209	J	Lott Angus M, miller	61n, Gurd's ay, Courtright	M F, T	3
1178		Motregor James	17, McD's ay, Courtright	M F, O	3
1180	J	Morris Patrick, watchman	33, McD's ay, Courtright	M F, T	3
1215	J	Mayhew Alexander, laborer	14n, Gurd's ay, Courtr't	M F, O	3
1206	J	McIntyre Robt, book keeper	6n, Gurd's ay, Courtright	M F, O	3
1223	J	McArthur J D, laborer	34n, 35n, Gurd's ay, Ct.	M F, Jt O	3
1221	J	McRae Norman, laborer	26n, Gurd's ay, Courtright	M F, O	3
386	J	McDonald John farmer	s 3-qr e hf 25, 5	M F, O	3
314	J	McLaughlan Edwin, farmer	e hf w hf 24, 4	M F, O	3
301	J	Martin George, farmer	w hf e hf 24, 4	M F, O	3
311	J	McDonald Alex'r, farmer	w hf 27, 4	M F, Jt O	3
312	J	McDonald Robert, farmer	w hf 27, 4	M F, Jt O	3
1172	J	Mulray George, liveryman	4, McD's ay, Courtright	M F, O	3
1207	J	Morrison Alex, drayman	65, McD's ay, Courtright	M F, O	3
1231	J	Nathan Daniel, sailor	18, 19n, Gurd's ay, Courtr't	M F, O	3
378	J	Phillips James E, farmer	e hf 23, 5	M F, O	3
379	J	Phillips Luther M, farmer	w hf 23, 5	M F, O	3
380	J	Phillips John, farmer	e hf 22, 5	M F, O	3

No. ON ROLL	Jurat.	NAME AND OCCUPATION.	LOT, CONCESSION OR STREET	Owner, Tenant, F.S.M.F	P. O. Address
1205		McIntyre Mrs Jessie, m. w.	6n, Gurd's sy, Court	Owner	3
1232		McKinnon Mrs Marg't, wdw	45, 46, 47n, Gurd's sy, Ct	Owner	3
1228		McKenzie Chas, merchant	28n, 29n, Gurd's sy, Court	Owner	3
1222		McRae Miss Mary, spinster	26n, Gurd's sy, Court	Owner	3
387		McDonald Mrs Nellie, widow	s 3 qrs e hf 25, 5	Jt Owner	3
311		McDonald Mrs Jane, widow	w hf 27, 4	Jt Owner	3
381		Phillips Julia, spinster	e hf 22, 5	Jt Owner	3
382		Phillips Sarah, spinster	o pt 25, front	Jt Owner	3
383		Phillips Elizabeth, spinster	s pt 21, 5	Jt Owner	3
1225		Sellman S S, lumberman	38n, 39n, 40n, 41n, G's sy, Ct	Owner	3
1202		Stevens Mrs C W, widow	57n, Gurd's sy, Court	Owner, Detroit	
299		Toner Mrs Margaret, widow	e hf 23, 4	Owner	3
1159		Wallen Mrs John, widow	16, Cath sy, Courtright	O, Oil Springs	
1233		Wells Mrs Hannah, widow	50n, Gurd's sy, Courtright	Owner	3
317		Whitsett Mrs Annie, widow	w pt 29, 5	Jt Owner	3
318		Whitsett Miss Lucinda, sp'n'r	w pt 29, 5	Jt Owner	3
319		Whitsett Miss Augusta, sp'r	e hf 29, 4	Jt Owner	3

PART III.—Persons entitled to vote at Elections to the Legislative Assembly only.—Polling Sub-Division No. 2.

1195	Barnes Lafayette, sailor	67, McD's sy, Courtright	M F	3
1235	Green Alfred, fireman	56n, Gurd's sy, Court	M F, T	3
1162	James John G, merchant	n hf 7, McV's sy, Courtright	M F	3
375	Mulonick Hugh, laborer	s e cor 19. 5	M F	6
1229	Price William, laborer	32n, Gurd's sy, Courtright	M F, O	3
1212	Plews George, miller	61n, Gurd's sy, Courtright	M F	3
1218	Shepherd James, laborer	16, Gurd's sy, Courtright	M F, T	3
1248	Woodberry M B, laborer	41, 42, 5 McD's sy, Court	M F	3

Polling Sub-Division No. 3.

SCHEDULE OF POST OFFICES.—2, Bridgen; 3, Courtright; 4, Corunna; 5, Kimball; 6, Colinville; 8, Moore; 12, Seckerton.

POLLING SUB-DIVISION NO. 3.—Comprising lots 31 to 54, both inclusive, Front concession, and lots 20 to 28, both inclusive, in 6th and 7th concessions and lots Nos. 19 to 28, inclusive, in 8th and 9th concessions. Polling in the hall at Mooretown.

PART NO. 1.—Persons entitled to vote at both Municipal Elections and Elections to the Legislative Assembly.

No. ON ROLL	Juror.	NAME AND OCCUPATION.	LOT, CONCESSION OR STREET	Owner, Tenant, F.S., M.F.	P. O. Address
1268	J	Armstrong Jzs J P, doctor	59,60,61,62, Ba'y sy, part 35 Front, Moore.	M F, Jt O	8
1325	J	Alexander John, laborer	6, Sty sy, Moore	T	8
564	J	Andrew Matthew, farmer	e hf 20, 7	M F, O	12
576	J	Anderson Robert, farmer	e hf 24, 7	M F, Jt O	8
577	J	Anderson William, farmer	e hf 24, 7	M F, Jt O	8
1269	J	Armstrong Samuel A, student	64,85,86,24,B'y sy M'n	M F, Jt O	8
1286	J	Brightwell Richard, butcher	3 Baby sy, Mooretown	M F, O	8
1297	J	Barnes Chancey, laborer	36 Baby sy, Mooretown	M F, O	8
1271	J	Brown William,	1-2 Baby sy, Mooretown	M F, O	8
493	J	Baxter Robert F, farmer	w hf 26, 6	M F, O	8
494	J	Bolton Robert, farmer	e hf w hf 27, 6	M F, O	8
586	J	Baxter Robert H, farmer	e hf 27, 7	M F, O	8
588	J	Bolton Thomas, farmer	w hf 27, 7	M F, Jt O	8
589	J	Bolton George, farmer	Gore 28, 7	M F, Jt O	8
754	J	Brown Alex, farmer	w qr 21, 9	M F, O	6
1314	J	Brown John W, farmer	67-97 Baby sy, Mooret'n	M F, O	8
590	J	Boulton Arthur, farmer	Gore 28, 7	M F, F S	8
1352	J	Buck Dr., doctor,	52 front	M F, O London	8
1279	J	Bryson Robert, laborer	21 Baby sy, Mooretown	M F, O	8
1287	J	Brightwell John, butcher	3 Baby s'y Mooretown	M F, T	8
1292	J	Benedict Charles, cooper	30 Baby sy, Mooretown	M F, T	8
654	J	Cameron Duncan, farmer	e hf 21, 8	M F, O	8
650	J	Cruikshank James, farmer	e 3-4 20, 8	M F, O	6
1341	J	Creighton Thomas, farmer	44, front	M F, O	8
1260	J	Cruikshank William, farmer	n hf 34, front	M F, O	8
1314	J	Cranston Samuel, laborer	whf79whf80, Ba'y sy, M'n	M F, O	8
1344	J	Creighton Henry, farmer	46, front	M F, O	8
1345	J	Creighton George, farmer	47, front	M F, O	8
476	J	Cunningham Alex. farmer	centre 2, 6	M F, O	8
587	J	Clydesdale Samuel J, farmer	w hf 27, 7	M F, O	8
653	J	Cameron Duncan jr., farmer	e hf 21, 9	M F, Jt O	6
654	J	Cameron Charles, farmer	e hf 21, 9	M F, Jt O	6
649	J	Cruikshank J M, farmer	e 3-4 20, 8	M F, O	6
651	J	Cruikshank Alex W, farmer	e 3-4 20, 8	M F, Jt O	6
1264	J	Chambers Freeman, cooper	5-6, Wright's sy, Moore	M F, T	8

No. ON ROLE	Juror.	NAME AND OCCUPATION.	LOT, CONCES- SION OR STREET	Owner, Tenant, F.S, M.F	P. O. Add'ess
1319	J	Dyer Phillip, laborer	10, blk 2, Stewart sy, M'n	M F, O	8
736	J	Duggan David, farmer	w qr 19, 8	M F, O	6
735	J	Duggan John, farmer	e hf 20, 9	M F, O	6
662	J	Ellis William, farmer	e hf 27, 8	M F, O	4
569	J	Edwards Frank, farmer	e hf 21, 7	M F, O	12
477	J	Eyer George, farmer	w pt 22, 6	M F, T	12
1307		Frille Hugh, laborer	5-6 Wright sy, Mooret'n	M F, T	8
1256		Featherstone Joseph, farmer	s 3-4 32, front	M F, O	8
1263		Flicke Charles, laborer	10, 11, 12, Wright sy, M'n	M F, O	8
565		Finlayson John, farmer	e qr 20, 6	M F, O	12
474	J	Finlayson Alex, farmer	e qr 32, 6	M F, O	8
475	J	Finlayson Jas A, farmer	e qr 22, 6	M F, Jt O	8
1285	J	Gillman Charles, sailor	16-25 Baby sy, Mooret'n	M F, O	8
1338	J	German William, farmer	40, 41, 42, front	M F, Jt O	8
1342	J	Graham Joseph, farmer	w hf 45, front	M F, Jt O	8
1343	J	Graham Charles, farmer	w hf 45, front	M F, Jt O	8
471	J	Gray John, farmer	e hf 21	M F, O	12
484	J	Gaw John, farmer	w hf 24, 6	M F, T	8
585	J	Houser William, farmer	w hf 28, 7	M F, T	8
1287		Haskal Andrew, carpenter	40 Baby sy, Moore	M F, O	8
1298		Hamilton John, laborer	34 36, 37, 28, Baby sy M'n	M F, O	8
1301		Haskall Joseph, blacksmith	49, 50, 51, 52, 53, Bab'sy, M'n	M F, O	8
1316		Hutchinson Daniel, farmer	99, 100, 101, 102, Bab'sy, M'n	M F, T	8
499	J	Hadden Daniel, farmer,	w pt 28, 29, 6	M F, O	8
575	J	Hascot Joseph, farmer	w hf 23, 7	M F, O	8
663		Hackney Joseph, farmer	w hf 27, 8	M F, Jt O	4
664	J	Hackney Joseph jr, farmer	w hf 27 8	M F, Jt O	4
732		Hescott John, farmer	w hf 19, 9	M F, Jt O	6
733	J	Hescott John W, farmer	e hf 22, 9	M F, Jt O	6
734	J	Hescott William, farmer	w hf 19, 9	M F, Jt O	6
1302		Haskall Calvin, blacksmith	40-50 Baby sy, Moore	M F, Jt O	8
1289		Hay Peter, laborer	29 Baby sy, Moore	M F, O	8
1291		Hay Stephen, sailor	117, 118, 119, Bab'sy, M're	M F, O	8
497	J	Harkness Edward, farmer	e pt 28, 6	M F, O	8
737		Hescott George, farmer	e qr 20, 9	M F, O, Petrolea	
490		Hall John, farmer	n e cor 26, 6	M F, O	8
1348	J	Jamieson Norman, farmer	n hf 50, front	M F, O	8
479	J	Johnston David W, farmer	w hf 23, 6	M F, Jt O	8
480	J	Johnston Andrew, farmer	w hf 23, 6	M F, Jt O	8
481	J	Johnston Alex, farmer	e hf 24, 6	M F, O	8
483		Johnston Samuel, farmer	w hf 24 e qr 27, 6	M F, Jt O	8
482	J	Johnston Frederick, farmer	e hf 24, 6	M F, Jt O	8
1349	J	Jamieson Malcolm, farmer	n hf 50, front	M F, O	8
1257	J	Kirton Walter, farmer	s hf 33, front	M F, O	8
1258	J	Kirton Frank, farmer	n qr 32, front	M F, F S	8
744	J	Lukey Amos J, farmer	e hf w hf 25, 9	M F, Jt O	4
570	J	Lereux Peter, farmer	w hf 21, 7	M F, F S	8
1309		Laggott G J, farmer	55, 56, 57, Bab'sy, M're	M F, O, Windsor	

TOWNSHIP OF MOORE.

Owner, Tenant, F.S., M.F.	P. O. Address	No. ON ROLL	Jurat.	NAME AND OCCUPATION.	LOT, CONCESSION OF STREET	Owner, Tenant, F.S., M.F.	P. O. Address
M F, O	8	1305		Mitchell Nesbit, gardener	45,46 Baby sy, Mooret'n	M F, O	8
M F, O	6	1270		Morrison John, tailor	22,23,24,25,26,27 Wright sy, Mooretown	M F, O	8
M F, O	6	1320		McRae John, Clerk Div Crt.	blk2 7whf8Stw'tsy, M't'n	M F, O	8
M F, O	4	1324		Mayhew Mark, laborer	2 & 5 blk 1, Stewart's sy	M F, O	8
M F, O	12	1327		Mayhew Israel, sailor	blk 8 lot 3, Stewart's sy	M F, O	8
M F, T	12	1329		Milliken Richard, laborer	1, 2, 3, 4, 5, 6, S'tw't sy	M F, O	8
M F, T	8	1340	J	Murray John, farmer	43, front	M F, O	8
M F, O	8	1351	J	Morrison Donald, farmer	51, front	M F, O	2
M F, O	8	1353	J	McGlashan Charles, farmer	53 front	M F, T	8
M F, O	8	1354	J	McGlashan David, farmer	53 front	M F, T	8
M F, O	12	472	J	McFarlane George, farmer	w hf 21, 6	M F, O	8
M F, O	8	487	J	McRae Peter, farmer	w hf 23, 6	M F, O	8
M F, O	8	495		McRae John, farmer	w qr 27, 6	M F, O	8
M F, O	8	580	J	Mulholland John, farmer	w hf 24, 7	M F, O	8
M F, O	8	1350	J	Morrison Wm A, farmer	51, front	M F, O	8
M F, O	8	583	J	Marshall Wm, farmer	e hf 26, 7	M F, O	8
M F, O	8	738	J	McGurk Henry, farmer	23, 9	M F, O	4
M F, O	8	749	J	Moore Andrew, farmer	w hf 26, 9	M F, O	8
M F, O	12	748		Moore James, farmer	w hf 26, 9	M F, O	8
M F, T	8	496	J	McRae Alex, farmer	w hf 27, 6	M F, O	8
M F, O	8	1346	J	McRae Alexander, farmer	s hf 50-49, front	M F, T	8
M F, O	8	582	J	Marshall Robt T, farmer	w hf 25, 7	M F, O	8
M F, O	8	1333		McKinnon Roderick, merch't	blk 2 Stewart sy, lot 11	M F, T	8
M F, O	8	1312		Noyle Frederick A, undert'r	5,11-12, Babysy, M'ret'n	M F, O	8
M F, O	8	1311		Noyle Charles F, undertaker	97e's'tsy, 11, 12B'ysy, M'n	M F, O	4
M F, O	8	656	J	Nesbit Charles, farmer	w hf 22, 8	M F, O	6
M F, O	8	573	J	Nesbet James, farmer	w hf 22, 7	M F, O	8
M F, O	4	655	J	Neal Walter, farmer	w hf 21, 8	M F, O	4
M F, O	4	1318		Nelson Albert, laborer	129,10,11,12, Wr'tsy, M'n	M F, O	8
M F, O	6	1272		Ormerod John, laborer	9 Baby sy, Mooretown	M F, O	8
M F, O	6	658	J	Payne Joseph, farmer	w qr 24, 8	M F, O	4
M F, O	8	1296		Papst Simeon H, laborer	33 Baby sy, Mooretown	M F, O	8
M F, O	8	1336	J	Reilly Charles, hotel keeper	37, 38, front	M F, O	8
M F, O	8	741	J	Robbins Frank, farmer	e hf 25, 9	M F, FS	4
M F, O	8	637	J	Robbins Andrew, farmer	e hf 23, 8	M F, O	4
M F, O	8	740	J	Robbins John, farmer	e hf 25, 9	M F, O	4
M F, O	8	751	J	Richmond David, farmer	w hf 27, 9	M F, O	4
M F, O	8	752	J	Richmond William, farmer	w hf 27, 9	M F, FS	4
M F, O	8	746	J	Richardson William, farmer	e hf 26, 9	M F, O	4
M F, O	8	747	J	Richardson George, farmer	e hf 26, 9	M F, O	4
M F, O	8	750	J	Robbins George A, farmer	e hf 27, 9	M F, O	8
M F, O	8	753	J	Richmond John, farmer	w hf 27, 9	M F, O	4
M F, O	8	648	J	Struthers John, farmer	e hf w hf 19, 8	M F, O	6
M F, O	8	1317		Scott Henry, laborer	park lots 7,9,20,21, M'n	M F, O	8
M F, FS	8	647	J	Struthers James, farmer	e hf w hf 19, 8	M F, O	6
M F, FS	8	1359	J	Scott William, farmer	54 front	M F, O	4
M F, FS	8	1360	J	Scott William J, farmer	54 front	M F, O	4
M F, FS	8	742	J	Smith Robert, farmer	w 3-4 24, 9	M F, O	4
M F, FS	8	743	J	Smith William, farmer	w 3-4 24, 9	M F, O	4

No. ON ROLL	Juror	NAME AND OCCUPATION.	LOT, CONCESSION OR STREET	Owner, Tenant, F.S., M.F.	P. O	Add'ss
1295		Sharp Robert, painter	31, 32, Baby sy, M'n	M F, O		8
498	J	Sutton Seymour, farmer	w hf 28, 6	M F, T		8
1337	J	Smithers James, clergyman	39, front	M F, O		8
1280	J	Tremmell Isaac, teacher	21 Baby sy, M'n	M F, O		8
1277		Terwillinger Jas J, laborer	15 Baby sy, M'n	M F, O		8
1288	J	Tremmell Richard, sawyer	71, 43, Baby sy, M'n	M F, O		8
566	J	Trapp Hugh, farmer	w hf 20, 6	M F, Jt O		8
567	J	Trapp George, farmer	w hf 20, 6	M F, Jt O		8
485	J	Turnbull Joseph, farmer	e hf 25, 6	M F, Jt O		8
486	J	Turnbull William, farmer	e hf 25, 6	M F, Jt O		8
591	J	Turnbull William, farmer	e hf 25, 7	M F, O		8
568	J	Thompson William, farmer	w hf 20, 7	M F, T		8
574	J	White Alex jr, laborer	e hf 23, 7	M F, T		8
1194	J	Wood R W, carriage maker	67,68,69,70, Baby sy, M'n	M F, O		8
1321		Whiting John, hotel keeper	9, blk 1, S't sy, M'n	M F, O		8
1273		Watson Alexander, sadler	17 park lots 23 B'ysy, M'n	M F, O		8
478	J	Wardrop Andrew, farmer	e hf 23, 6	M F, O		8
572	J	Wigmore William, drover	e hf 22, 7	M F, O, Sarnia		8

PART NO. 2 - Persons entitled to vote at Municipal Elections only. Polling Sub-Division No. 3.

1267		Armstrong Mrs J A, widow	pt 35, front	O		8
1310		Anderson Wm D, doctor	n e pt 35, front	O		8
578		Anderson Mrs Ann, widow	e hf 24, 7	Jt Owner		8
579		Anderson Jane, widow	e hf 24, 7	Jt Owner		8
492		Baxter Mrs Jane, widow	w hf 26, 6	O		8
1294		Barr Mrs Mary, widow	13, 14, Baby sy, M'n	O		8
1293		Brooks Mrs, Widow	30 Baby sy, M'n	O, Toronto		8
1278		Chambers, Mrs F, widow	16,17,18, Baby sy, M'n	O		8
1306		Finnegan Bridget, widow	73 Baby sy, Mooretown	O		8
1253		Gamble Mrs, m. w.	8 Baby sy, Mooretown	Owner		8
1261		Gordon David, salt mfr.	1,2,3,4,19,20, W't sy, M'n	Owner		8
1262		Gordon S W, salt mfr.	1,2,3,4,19,20, W't sy, M'n	Owner		8
1269		Gibbons Mrs	pt 35, front	Tenant, England		8
745		Hagan Jane Mrs, widow	w hf 25, 9	Tenant		8
490		Hall Albert, farmer	n e cor 26, 6	M F		8
1323		Hadden Mrs Isabella, widow	6, Stewart sy, M'n	Owner		6
1313		Keating Miss Minnie, spins'r	s w cor 35 front	Owner, Oil City		8
1259		Linton Mrs Julia, widow	n hf 33, front	Owner		8
571		Leroux Mrs Ann, widow	w hf 21, 7	Owner		8
1254		Little Mrs Susan, widow	w pt 31, front	Owner		8
1266		McKinnon Miss Jane, spin'r	5, 6, Wright sy, M'n	Jt Owner		8
1265		McKinnon Miss Mary, sp'r	5, 6, Wright sy, M'n	Jt Owner		8
1355		McGlashen Mrs H, widow	53, front	Jt Owner		8
1356		McGlasham Miss Mary, sp'r	53 front	Jt Owner		8
489		McRae Mrs Jessie, widow	w hf 25, 6	Jt Owner		8

TOWNSHIP OF MOORE.

Owner, Tenant, S, M, F P. O. Add'ge
 M F, O 8
 M F, T 8
 M F, O 8
 M F, O 8
 M F, O 8
 F, Jt O 8
 F, Jt O 8
 F, Jt O 8
 F, Jt O 8
 M F, O 8
 M F, T 8
 M F, T 8
 M F, O 8
 M F, O 8
 M F, O 8
 M F, O 8
 F, O, Sarnia
 s only. Poll-
 O 8
 O 8
 t Owner 8
 t Owner 8
 O 8
 O 8
 O, Toronto
 O 8
 O 8
 Owner 8
 Owner 8
 Owner 8
 hant, England
 Tenant 8
 M F 8
 Owner 6
 vner, Oil City
 Owner 8
 Owner 8
 Owner 8
 t Owner 8
 t Owner 8
 t Owner 8
 t Owner 8
 t Owner 8

No. ON ROLL	Juror.	NAME AND OCCUPATION.	LOT, CONCESSION OR STREET	Owner, Tenant, F.S, M. F	P. O. Add'ge
584		Marshall Mrs Martha, widow	e hf 26, 7	Jt Owner	8
1274		McPherson Mrs S, widow	41, 141, 144 Baby sy, M'n	Owner, Toronto	
1648		McLean A D, bank manager	41, front	Owner, Sarnia	
1358		Needham Mrs H, widow	53, front	Jt Owner	8
1357		Needham Mrs M, widow	53, front	Jt Owner	8
1645		Nesbit T W, bank clerk	w pt 48 front	Owner, Sarnia	
1299		Payne Miss Sarah, spinster	58-63 Baby sy, M'n	Owner	8
500		Pretty Mary, m. woman	park lots 10, 11, 12, M'n	Owner	2
661		Payne Miss Eliza, spinster	e hf w hf 26, 8	Owner	4
1308		Richmond Mrs M, widow	72 Baby sy, M'n	Tenant	8
1334		Solis George E, laborer	blk 2 Stewart sy, M'n	Owner	8
1290		Stamers J S, laborer	30-44 Baby sy, M'n	Owner	8
1348		Sinclair Mrs J, widow	49, front	Owner	8
1276		Thomas Mrs M, widow	7, 8, Stewart sy, M'n	Owner	8
1283		Wheeler Mrs Eliga, m. w.	109, 110, 132 Baby sy, M'n	Owner	8
1322		Whiting Mrs H, m, w.	blk 6 lot 4, Stewart sy, M'n	Owner	8
1332		Wilkinson F B, doctor	blk 1 lot 8, Stewart sy, M'n	Owner	8

PART NO. 3.—Persons entitled to vote at Elections to the Legislative Assembly only.—Polling Sub-Division No. 3.

659		Bodian Amab, laborer	e hf 25, 8	M F	8
660		Bailey John, laborer	w qr 26, 8	M F	8
1326		Claris C J, farmer	blk 8 lot 6, Mooretown	M F, Sarnia	
491		Hall Albert, farmer	e hf 26, 6	M F	8
1255		Howard R S W, clergyman	31 front	M F	8
731		Heatley Chas, farmer	w hf e hf 19, 8	M F	8
1281		McLean Norman, laborer	11, 12, Stewart sy, M'n	M F	8
475		McKinnon Murdock, laborer	e qr 22, 6	M F	8
473		McFarlane Alex, carpenter	w hf 21, 6	M F	8
1300		Papst Elsworth, laborer	43 Baby sy, M'n	T, M F	8
1330		Papst Norman, laborer	blk 8, 9, Stewart sy, M'n	M F	8
1331		Papst Henry, laborer	blk 8, 9, Stewart sy, M'n	M F	8
1303		Shepherd Shebley, farmer	71 Baby sy, M'n	M F	8
1304		Shepherd Joseph, laborer	71 Baby sy, M'n	M F	8
1275		Servis Perry, laborer	24 Baby sy, M'n	M F	8
1328		Scoby John, laborer	blk 8 lot 4, M'n	M F	8
730		Whittle Bert, laborer	e hf 19, 9	M F	8
739		Waring Reginald, farmer	23, 9	M F	6

Polling Sub-Division No. 4

PART 1—List of persons entitled to vote at both Municipal Elections and Elections to the Legislative Assembly.

SCHEDULE OF POST OFFICES.—3, Courtright ; 4, Corunna ; 5, Colinville ; 7, Logierait ; 8, Moore ; 14, Surnia ; 15, Lucasville.

POLLING SUB-DIVISION NO 4.—Comprising lots 55 to 72, both inclusive, Front concession ; and lots 10 to 27, both inclusive, in the 10th, 11th and 12th Concession. Polling in the hall at Corunna.

No ON ROLL	Jurat.	NAME AND OCCUPATION:	LOT, CONCESSION OR STREET	Owner, Tenant, F.S, M, F	P. O. Address
806	J	Alexander David, farmer	e hf w hf 16, 10	M F, O	7
808	J	Alexander John, farmer	w qr 16, 10	M F, O	7
821	J	Allingham John, farmer	w hf 21, 10	M F, O	4
908	J	Austin James, farmer	w hf e hf 22, 11	M F, O	4
909	J	Austin Alex, farmer	w hf 22, 11	M F, Jt O	4
916	J	Austin Robert, farmer	w hf 24, 10	M F, Jt O	4
8-7	J	Alexander Robert, farmer	e hf w hf 16, 10	M F, Jt O	4
903	J	Burns James, farmer	w hf 20, 11	M F, T	4
922	J	Birmingham Wm, farmer	e hf 24, 11	M F, Jt O	4
1407		Bardan Wm H, laborer	8,9,10,11,12,13,sFane st, Corunna	M F, O	4
1384		Burlett Augustus, gardener	1 wLyndochst, Corunna	M F, Jt O	4
1377	J	Baxter Alfred, grocer	15 w Lyndoch st, Corunna	M F, T	4
920	J	Birmingham James, farmer	e hf 24, 11	M F, T	4
921	J	Birmingham Luke, farmer	e hf 24, 11	M F, T	4
1376		Benner Robert, gentleman	11 e Beresford st, Corunna	M F, O	4
1421		Bennett Thomas, farmer	17, 18, 19, 20, nHillst, Cor'a	M F, O	4
1-27		Birmingham David, carp'r.	21, 25 26, nPagetst Corunna	M F, O	4
1471		Bridges William, gentleman	1 Telfer sy, Froomefield	M F, O	4
1410		Bury John, sailor	16, 17, Murray st, Coru'a	M F, O	4
814	J	Babcock Sylvester, farmer	w hf 19, 10	M F, T	7
916	J	Cowan Thoa sr, farmer	w hf e hf 23, 11	M F, Jt O	4
1397	J	Callum Donald, gentleman	16, 7, Lyndoch st, ehf17, etc	M F, O	4
727	J	Cowan William, farmer	centre pt 22, 10	M F, O	4
826	J	Cowan Geo W, farmer	centre pt 22, 10	M F, T	4
1408	J	Cowan James, farmer	centre pt 22, 10	M F, O	4
828	J	Cowan Robert, farmer	e qr 23, 10	M F, O	4
829	J	Cowan Robert A, farmer	e qr 23, 10	M F, Jt O	4
889	J	Callum Duncan, farmer	8 c pt 16, 11	M F, Jt O	7
892	J	Callum John, farmer	w pt 16, 11	M F, Jt O	7
900	J	Cooper George, farmer	w pt 19, 11	M F, O	4
915	J	Cowan Thomas W farmer	w hf e hf 22, 11	M F, Jt O	4
1366		Cameron George, coal insp'r	parts 57, 58, front	M F, Jt O	4
1339	J	Carruthers Francis, farmer	w hf 19, 2	M F, O	15
1369	J	Cooper Thomas, farmer	w pt 58, front	M F, O	6
890	J	Callum James, farmer	c 16, 11	M F, Jt O	7
1422	J	Chambers John, farmer	18 w Murray st, Corunna	M F, O	4
1476	J	Clysdale John, farmer	e pt 70, 71, front	M F, O	4
1477	J	Clysdale James jr, farmer	pts 71, 72, front	M F, Jt O	4
1478	J	Clysdale James sr, farmer	pts 71, 72, front	M F, Jt O	4

TOWNSHIP OF MOORE

No. ON ROLL	Juror.	NAME AND OCCUPATION.	LOT, CONCESSION OR STREET	Owner, Tenant, F.S.M.F	P. O. Address
918	J	Cain Edward, farmer	e 3-4 w hf 23, 11	M F, Jt O	4
1042	J	Cruise Bruce, farmer	e hf 20, 12	M F, O	4
1057	J	Dobson Albert, farmer	w hf e hf 22, 12	M F, Jt O	14
893	J	Degursey Peter jr, farmer	e hf 17, 11	M F, Jt O	7
901	J	Degursey Samuel, farmer	e hf 20, 11	M F, O	4
1055	J	Dobson William, farmer	w hf 23, 12	M F, Jt O	14
1056	J	Dobson Thomas, farmer	w hf 23, 12	M F, Jt O	14
1386	J	Davidson Thomas, blacksh	7 w Lyndoch st, Cor	M F, O	4
1467	J	David Theophilus, carpenter	17, 18, 19 Bertrandsy, F'm'd	M F, O	4
1074	J	Darush Peter	w hf 1 park lot, Froom'd	M F, O	4
1365	J	Durand Andrew, fire insp'r	w pt 57, front	M F, O	4
1468	J	David Joseph, merchant	17, 18, 19, Bertrandsy, front	M F, O	4
902	J	Degursey Lewis, farmer	e hf 20, 11	M F, Jt O	4
1031	J	Davidson George, farmer	n hf 16, 12	M F, T	15
1404	J	Edwards James, gentleman	21 w Murray st, Cor	M F, O	4
1361	J	Edwards Robt S, farmer	55, front	M F, O	4
1372	J	Edwards David, gentleman	22, 23, w Lyndoch st, Cor	M F, O	4
1380	J	Ellis Thomas E, sailor	19, 21, 21, w Lyndochst, Cor	M F, O	4
1423	J	Ellis Thomas, gentleman	20, 20, 17, e Lyn st, Cor	M F, O	4
1390	J	Edwards Joseph, carpenter	10, 11, e Lyn st, Cor	M F, O	4
1373	J	Edward Emmanuel, agent	24, 25, 28, w Beres st, Cor	M F, O	4
896	J	Ford Thos Barnes, farmer	e qr 19, 10	M F, O	7
895	J	Ford William H, farmer	e hf 18, 11	M F, O	7
1443	J	Farquharson John A, clerk	24, 25, 28, w Beresst, Cor	M F, Jt O	14
897	J	Ford Henry, farmer	e hf 18, 11	M F, O	7
894	J	Farris John, farmer	w hf 17, 11	M F, T	4
1037	J	Gibb John S, farmer	18, 12	M F, Jt O	14
1362	J	Goldie A T, farmer	56 front	M F, Jt O	4
1071	J	Gibb John, farmer	gore of 27, 12	M F, Jt O	14
1070	J	Gibb Robt R, farmer	gore of 27, 12	M F, Jt O	14
1063	J	Gibb Robert, farmer	w hf 24, 12	M F, O	14
1052	J	Gibb Archibald sr, farmer	e hf 23, 12	M F, Jt O	14
1053	J	Gibb Archibald jr, farmer	e hf 23, 12	M F, Jt O	14
1036	J	Gibb Robt M, farmer	18, 12	M F, Jt O	14
1363	J	Goldie George, farmer	56, 57, front	M F, O	4
1440	J	Grant John, gentleman	9, 10, e Beres st, Cor	M F, O	4
1418	J	Garroch John, mason	1, 2, 3, Bentick st, Cor	M F, Jt O	4
1403	J	Gilbert Wm J, weaver	22, 23, 24, w Murrayst, C'a M F,	Jt O	4
1405	J	Glass L D, plasterer	21, w Murray st, Cor	M F, T	4
1419	J	Garroch John, coal dealer	1, 2, 3, Bentick st, Cor	M F, Jt O	14
1420	J	Garroch Wm, coal dealer	1, 2, 3, Bentick st, Cor	M F, Jt O	14
830	J	Hackney Wm, farmer	w hf e hf 23, 10	M F, O	4
835	J	Hossie Henry, farmer	w 1-3 25, 10	M F, O	4
888	J	Hossie Thomas, farmer	e qr 16, 11	M F, O	7
904	J	Hagen James, farmer	w hf 20, 11	M F, Jt O	4
1041	J	Hewett Simeon, farmer	e hf 20, 12	M F, Jt O	14
1043	J	Hewitt James, farmer	w qr 20, 12	M F, Jt O	14
1038	J	Hossie James, farmer	e hf 19, 12	M F, O	16
1034	J	Hossie Andrew, farmer	e hf 17, 12	M F, O	16
1457	J	Harrold John W, farmer	65, front	M F, O	4

Elections and

na; 5, Colin-

both inclu-
th, 11th and

wner,
enant,
S, M, F

M F, O

M F, O

M F, O

F, Jt O

F, Jt O

M F, T

F, Jt O

M F, O

M F, O

M F, O

M F, O

M F, T

F, Jt O

M F, O

M F, O

M F, T

F, Jt O

M F, O

M F, O

M F, T

F, O

Jt O

Jt O

Jt O

Jt O

Jt O

Jt O

Jt O

TOWNSHIP OF MOORE.

No. on Roll	Juror.	NAME AND OCCUPATION.	LOT, CONCESSION OF STREET	Owner, Tenant, F.S., M.F.	P. O. Address
1445		Johnston Thomas, doctor	22, 23, w Beresford st, Cor	M F, O	4
1064		Johnston Alex, farmer	e hf 25, 12	M F, Jt O	4
1065	J	Johnston Wm J, farmer	e hf 25, 12	M F, Jt O	4
1449		Kearney Michael, laborer	5, 6, 7, 8 e Colb st, Cor	M F, Jt O	4
1426		Kemmis George, gentleman	8, 9-11-14, w Colborne st	M F, O	4
1431		Khrou Henry, laborer	9, 10, e Colborne st	M F, O	4
1370		Lapier Peter, gentleman	26, 27, w Lyndoch st	M F, Jt O	7
810	J	Lapier Frank, farmer	w qr 17, 10	M F, Jt O	7
805	J	Lapier Joseph, farmer	e hf 16, 10	M F, Jt O	7
813	J	Lapier George, farmer	w hf e hf 19, 10	M F, O	7
816	J	Leighton William, farmer	e hf 20, 10	M F, O	14
899	J	Lapier John, farmer	n hf e hf 19, 11	M F, O	7
1396		Laforge Joseph, laborer	19 e Lyndoch st	M F, O	4
1389		Lario George, hotel keeper	8, 9, Lyndoch st	M F, O	4
1411	J	Lock Thomas, sailor	3, 4, 5, Paget st	M F, O	4
1073		Laforge Louis, sailor	e hf park lot 1, Froomefield	M F, O	4
1425		Lang James, farmer	1, 2, 3, 4, e Colborne st, 1, 2, 3, 4, 5, 6, w Colborn st	M F, O	4
1050	J	Mowbray William O	w hf 22, 12	M F, Jt O	14
1413		McRae Alexander	8 9 n Hill st	M F, O	4
1473		McKay Robt, brickmaker	2, Telford sy, Froomefield	M F, O	4
1432		Moody John, farmer	24, 25, 26, e Baird st	M F, O	4
905		Mulligan Thomas, farmer	e pt 21, 11	M F, Jt O	4
837	J	McRae Murdock, farmer	w qr 26, 10	M F, Jt O	4
838	J	McRae Malcolm, farmer	w qr 26, 10	M F, Jt O	4
898		McCoy Michael, farmer	w hf 18, 11	M F, Jt O	7
906	J	Mulligan James, farmer	e pt 21, 11	M F, Jt O	4
911	J	McLachlan John sr, farmer	w hf 22, 11	M F, O	4
923	J	McLachlan John, farmer	w hf 24, 11	M F, O	4
324	J	McGill Joseph, farmer	e hf 25, 11	M F, O	4
1058	J	Miller John, farmer	n e qr 24, 12	M F, O	14
1481		Maw Newton, farmer	5, 6, front, Froomefield	M F, O	4
1040	J	McGill Joseph, farmer	e hf w hf 20, 12	M F, O	14
1379		McBean Angus, gentleman	20, 19, Lyndoch st	M F, T	4
1414		McRae Malcolm, sailor	8, 9, n Hill st	M F, O	4
1429		McGill John, bailiff	4, 5, 6, 7, 0, w Albtt st, Cor	M F, O	4
811	J	Moore J B, farmer	e hf 18, 10	M F, O, Sarnia	
928	J	Maguire James W, farmer	gore 27, 11	M F, O	4
1049		Mowbray William, farmer	w hf 22, 12	M F, O	14
1044		Murray Robert, farmer	21, 12	M F, Jt O	14
1045	J	Murray George, farmer	21, 12	M F, Jt O	14
907		Mulligan John, farmer	e pt 21, 11	M F, Jt O	4
912		McLachlan Thomas, farmer	w hf 22, 11	M F, Jt O	4
1391	J	Maguire John, gentleman	15 e Lyndoch st	M F, O	4
1416		Metge Richard, civil engin'r	10, 11, 12, 13 n Paget st	M F, Jt O	4
1435		Mugan G J, clergyman	2, 3, 4 e & w Beresford st	M F, T	4
1451	J	Morrison Lachlan, farmer	63, 64, front	M F, O	4
1452	J	Morrison Lachlan P, farmer	63, 64, front	M F, Jt O	4
1454		Morrison Neal, farmer	63, front	M F, F S, Jt O	4
1453	J	Morrison Jas D, farmer	63, 64, front	M F, Jt O	4
914		McLachlan, Patrick, farmer	w hf 22, 11	M F, Jt O	4

TOWNSHIP OF MOORE.

17

Owner, Tenant, F.S.,M.F.	P. O. Add ^{ss}	No. ON ROLL	Juror.	NAME AND OCCUPATION.	LOT, CONCES- SION OR STREET	Owner, Tenant, F.S.,M.F.	P. O. Add ^{ss}
M F, O	4	1482		Maw James, farmer	7 Telford sy, Froomefield	M F, O	4
F, Jt O	4	913		McLaohlan John jr, farmer	w hf 22, 11	M F, Jt O	4
F, Jt O	4	1048		Murray Thomas, farmer	21, 12	M F, Jt O	4
F, Jt O	4	1455		Morrison Wm H, farmer	63, 64, front	M F, Jt O	4
M F, O	4	1051	J	Mowbray John H, farmer	w hf 22, 12	M F, Jt O	14
M F, O	4	1414	J	McRae Malcolm, sailor	8,9, n Hill st. Cor	M F, Jt T	14
F, Jt O	7	1418		Needham Wm, farmer	11,12,13,14 s Paget st	M F, O	4
F, Jt O	7	832		Needham Geo, farmer	e 1-3 25, 10	M F, Jt O	4
F, Jt O	7	833	J	Needham R, farmer	e 1-4 24, 10	M F, Jt O	4
M F, O	7	834	J	Needham A, farmer	e 1-3 25, 10	M F, Jt O	4
M F, O	14	1417		Needham J, farmer	11,12,13,14 s Paget st C'a	M F, T	4
M F, O	7	1371		Needham J, farmer	n s 25 Lyn, s s 24 West C'a	M F, O	4
M F, O	4	1472		Nutall R, gentleman	3 Davis sy, Park lot	M F, O	4
M F, O	4	809	J	O'Hare T, farmer	e 1-2 17, 10	M F, O	4
M F, O	4	1048		Payne T H, farmer	e 1-4 22, 12	M F, O	4
M F, O	4	1047		Payne J, farmer	e 1-4 22, 12	M F, O	4
M F, O	4	1375	J	Proctor C, merchant	19,17 w Lyndock st	M F, O	4
F, Jt O	14	1438	J	Proctor W J, merchant	17,18 e Beresford st	M F, O	14
M F, O	4	1382		Proctor John J, butcher	12, w Lyndock st	M F, O	4
M F, O	4	1430		Parker R, farmer	9,10,11,12 w Queen st.	M F, O	4
M F, O	4	1412		Porter J, farmer	10,11,12 w Murray st	M F, O	4
F, Jt O	4	1480	J	Rowan D, farmer	67 Front	M F, O	4
F, Jt O	4	812	J	Roberts B, farmer	w 1-2 18, 10	M F, Jt O	4
F, Jt O	4	815	J	Roberts P, farmer	w 1-2 19, 10	M F, Jt O	4
F, Jt O	4	926	J	Roberts B, farmer	e 1-4 26, 11	M F, T	4
F, Jt O	7	927		Roberts P, farmer	e 1-4 26, 11	M F, O	4
M F, O	4	1461	J	Rowan R, farmer	67, front	M F, O	4
M F, O	4	831	J	Roberts J, farmer	e 1-3 25, 10	M F, O	4
M F, O	4	1059		Sim A, farmer	w s e 1-4 24, 12	M F, Jt T	14
M F, O	14	1030	J	Stewart W R, farmer	n l hf 6, 12	M F, T	15
M F, O	4	1433		Smith R, carpenter	4 s Hill st, Corunna	M F, O	4
M F, O	14	1459	J	Stanley M, farmer	66, front	M F, O	4
M F, T	4	1067	J	Shanks W, farmer	e 1-2 26, 12	M F, O	14
M F, O	4	1069	J	Skeoch J, farmer	w 1-2 26, 12	M F, Jt O	4
M F, O	4	1066	J	Skeoch R, farmer	w 1-2 25, 12	M F, Jt O	4
F, O, Sarnia	4	1035	J	Stewart W, farmer	w 1-2 17, 12	M F, O	16
M F, O	4	1367	J	Seward S T, farmer	e pt 58, front	M F, Jt O	4
M F, O	14	1464	J	Stone C, farmer	69, front	M F, Jt O	4
F, Jt O	14	1465		Stone J, farmer	69, front	M F, Jt O	4
F, Jt O	14	1060		Sim G, farmer	w 1-2 24, 12	M F, T	4
F, Jt O	4	1062		Sim W, farmer	w 1-2 24, 12	M F, T	4
F, Jt O	4	1061		Sim J, farmer	w 1-2 24, 12	M F, T	4
M F, O	4	1436		Symes D, sailor	s 2-3 10 w Beresford st	M F, O	4
F, Jt O	4	1439		Symes J B, captain	26, 27 e Beresford st	M F, O	4
M F, T	4	1033		Sands J, farmer	s 1-2 16, 12	M F, O	15
M F, O	4	1393		Taylor R, farmer	s 1-2 17,18 Lyndockst C,	M F, Jt O	4
F, Jt O	4	1392		Taylor J, farmer	17, 18 e Lyndock st C	M F, O	4
S, Jt O	4	1394		Taylor J, sailor	18,19,20,21 w Colburn st	M F, Jt O	4
F, Jt O	4	1462	J	Turnbull J, farmer	68, front	M F, O	4
F, Jt O	4	1399		Thompson G J, clergyman	pt w pt 58, front	M F, T	4

TOWNSHIP OF MOORE.

NO. ON ROLL	Juror	NAME AND OCCUPATION.	LOT, CONCESSION OF STREET	Owner, Tenant, F.S, M.F	P. O. Address
1381		Watson E, grocer	n 1-2 17, e Lyndock st Cor	M F, O	4
1402		Watts A, laborer	26 w Murray st Cor	M F, O	4
817	J	Wellington H, farmer	w 1-2 20, 10	M F, O	4
818	J	Wellington J J, farmer	w 1-2 20, 10	M F, Jt O	4
819	J	Wellington D, farmer	e 1-2 21, 10	M F, Jt O	4
820	J	Wellington J H, farmer	e 1-2 21, 10	M F, O	4
822		Wilson Z, farmer	e pt 22, 10	M F, O	4
824	J	Wilson G, farmer	n pt 21, 11	M F, O	4
823		Wilson J, farmer	e 1-4 22, 11	M F, O	4
836		Wilson J, farmer	center 26, 11	M F, O	4
1424		Ward E, farmer	pt 60 etc, front	M F, O	4
1387	J	Watson R, wagon maker	6, 7 e Lyndock st Cor	M F, O	4
1401		Watt W P, laborer	26 w Murry st Cor	M F, O	4
1466		Warwick D, sailor	3,4,10 11 Bert'day Frm'd	M F, O	4
1479	J	Warwick W J, laborer	n w pt 71, front	M F, O	4
1470		Wing F, gentleman	n w pt 70, front	M F, O	4
825	J	Wilson J Jr, farmer	w pt 21, 11	M F, O	4
1480		Warwick C J, farmer	n w pt 71, front	M F, Jt O	4
1383	J	Zink J A, shoe maker	8, 9 w Lyndock st, Cor	M F, O	4

PART No. 2—Persons entitled to vote at Municipal Elections only. Polling Sub-Division No 2.

1385		Burlett Mrs M, widow	1, 2, 3, 4 e Lyndock st	Owner	4
919		Birmingham Mrs E, widow	e 1-2 24, 11	Owner	4
1378		Baxter Mrs S A, widow	15 w Lyndock	Tenant	4
917		Cain Mrs M, widow	e 3-4 w hf 23, 11	Owner	4
1469		David Miss Minnie, spinster	D, Froomfield Park	Owner	4
1054		Dobson Mrs L, widow	w hf 23, 12	Jt Owner	14
1444		Farquharson Mrs A, widow	24,25,28 w Beresford st Ca	Jt O	4
1072		Gowling Miss M, spinster	park lot 4, Froomfield	Owner	4
1434		Haggan Miss A, spinster	4 s Hill, Corunna	Owner	4
1032		Hossie Mrs Hattie, widow	n hf 16, 12	Owner	4
1448		Kemmis Mrs R, widow	5, 6, 7, 8 e Alfred st	Owner	4
925		Kearney Mrs J, widow	w qr 25, 11	Owner	4
1446		Mills N, lumber merchant	Stag Island	Owner	4
1368		Seward Mrs J, widow	e pt 58 front	Jt Owner	4
1483		Turnbull Mrs I, widow	12 Cross st, Froomfield	Owner	4
1415		Urquhart Mrs, widow	24, 25 n Hill st	Owner	4
1388		Watson Mrs R, widow	22,23 e Lyn st, Corunna	Owner	4
1400		Watson Mrs A, widow	8,9,10,11,13,14 C'n st Ca	Jt Owner	4
1474		Warwick Mrs M, widow	4 front Corunna	Owner	4

No. ON ROLL	Juror.	NAME AND OCCUPATION.	LOT, CONCESSION OR STREET	Owner, Tenant, F.S., M.F.	P. O. Address
-------------	--------	----------------------	---------------------------	---------------------------	---------------

PART NO. 3.—Persons entitled to vote at Elections to the Legislative Assembly only.—Polling Sub-Division No. 4.

M F, O	4	1458	Barber J, farmer	63, front	M F	4
M F, O	4	1075	Darush M, laborer	pt w hf park lot 1, Froomf'd	M F	4
F, Jt O	4	1076	Darush E, sailor	park lot 1, Froomefield	M F	4
F, Jt O	4	1437	Fairbrother G, sailor	Stag Island	M F	4
M F, O	4	1447	Gilbert G, laborer	51 Beckwith st, Corunna	M F	4
M F, O	4	1418	Glass L, fiddler	1 w Beresford st, Corunna	M F	4
M F, O	4			3, 4, 5 Beard st, Corunna		
M F, O	4	1450	Kearney J, farmer	5, 6, 7, w Alfred st	M F	4
M F, O	4			6, 7, 8 e Colbourn st		
M F, O	4	1068	Miller R, farmer	e hf 26, 12	M F	4
M F, O	4	1364	Milliken F, farmer	e pt 57, front	M F	4
M F, O	4	1647	Powell G E, laborer	12 w Lyndock st, Corunna	M F	4
M F, O	4	1456	Ranton T, farmer	63, 64, front	M F	4
F, Jt O	4	1409	Saunders J, painter	18 w, Murray st	M F T	4
M F, O	4	1441	Thomas W, farmer	6 w Beresford st, Corunna	M F	4
M F, O	4	1463	Wallis J, farmer	n w cor, 68 front	M F	4

s only. Poll-

Polling Sub-Division No. 5.

PART 1—List of persons entitled to vote at both Municipal Elections and Elections to the Legislative Assembly.

SCHEDULE OF POST OFFICES—2, Bridgen; 3, Courtright; 5, Colinville; 6, Kimball; 12, Seckerton.

POLLING SUB-DIVISION NO. FIVE—Comprising Lots 13 to 18, both inclusive, 4th and 5th Concessions; Lots 10 to 19, both inclusive, in 6th and 7th Concessions; and Lots 16 to 18, both inclusive, in 8th and 9th Concessions. Polling in Town Hall.

No. ON ROLL	Juror.	NAME AND OCCUPATION.	LOT, CONCESSION OR STREET	Owner, Tenant, F.S., M.F.	P. O. Address
-------------	--------	----------------------	---------------------------	---------------------------	---------------

Owner	4	368	J Andrew I, farmer	e hf 17, 5	M F, Jt O	6
Owner	4	717	J Anderson J, farmer	e hf 17, 9	M F, O	6
Owner	4	271	J Andrews J, farmer	e hf w hf 13, 4	M F, Jt O	6
t Owner	4	272	J Andrews A, farmer	e hf w hf 13, 4	M F, Jt O	6
Owner	4	363	J Andrews H, farmer	s e qr 16, 4	M F, T	6
Owner	4	355	J Andrews G, farmer	s hf 14, 5	M F, O	6
Owner	4	359	J Arnold C, farmer	n hf s hf 15, 5	M F, O	6
Owner	4	358	J Arnold J G, farmer	s qr 15, 5	M F, O	6
Owner	4	357	J Andrews J, farmer	s hf 14, 5	M F, Jt O	6
t Owner	4					
Owner	4					

No. ON ROLL	Ju No.	NAME AND OCCUPATION.	LOT, CONCESSION OR STREET	Owner, Tenant, F.S., M.F.	P. O. Address
452	J	Brown W, farmer	n pt 13, 6	M F, T	2
454	J	Booth W, farmer	c pt 14, 6	M F, O	12
459	J	Blackman L, farmer	s hf 15, 6	M F, Jt O	12
460	J	Blackman J, farmer	w hf 12, 5	M F, Jt O	12
461	J	Blackman T, farmer	s hf 15, 6	M F, Jt O	12
457	J	Blake J, farmer	n w cor 15, 6	M F, O	12
456	J	Blake W, farmer	n hf 15, 6	M F, O	12
462	J	Burns T, farmer	c pt 16, 6	M F, Jt O	12
464	J	Benton J M, farmer	e pt 17, 6	M F, O	12
465	J	Booth G, farmer	w pt 17, 6	M F, O	12
372	J	Booth B, farmer	s hf 18, 5	M F, O	12
726	J	Brown J, farmer	w qr 17, 9	M F, Jt O	5
455	J	Booth J, farmer	cen 14, 6	M F, Jt O	12
463	J	Burns L, farmer	cen 16, 6	M F, Jt O	12
367	J	Connors T, farmer	w hf 16, 5	M F, O	6
715	J	Cruickshank G, farmer	w hf 16, 9	M F, Jt O	5
447	J	Courtney J, farmer	w hf 11, 6	M F, O	2
541	J	Courtney M, farmer	e hf 13, 7	M F, O	2
542	J	Courtney W F, farmer	e hf 13, 7	M F, Jt O	2
636	J	Cameron A, farmer	e qr 16, 8	M F, O	5
639	J	Carpenter Robert, farmer	w hf 17, 8	M F, T	5
458	J	Cranston H, blacksmith	n w cor 15, 6	M F, T	12
534	J	Duncan Thomas R, farmer	e hf 11, 7	M F, O	4
470	J	Edwards Mark, farmer	w hf 10, 6	M F, O	12
553	J	Eyre Charles A, farmer	e hf 18, 7	M F, O	12
278	J	Eyre Arthur, farmer	w hf 15, 4	M F, Jt O	6
554	J	Eyre William F, farmer	e hf 18, 7	M F, Jt O	12
287	J	Ford Robert, farmer	w hf 18, 4	M F, Jt O	6
286	J	Ford James, farmer	w hf e hf 18, 4	M F, O	6
546	J	Gray William, farmer	e 3-4 15, 7	M F, O	12
544	J	Gray James, farmer	w qr 15, 7	M F, O	12
545	J	Gray George, student	w qr 15, 7	M F, Jt O	12
543	J	Harkness James, farmer	w hf 14, 7	M F, O	12
274	J	Hand Robert B, farmer	e pt 15, 4	M F, Jt O	6
279	J	Harkness Samuel, farmer	n hf s hf 16, 4	M F, O	6
556	J	Harkness William, farmer	e hf w hf 18, 7	M F, O	12
284	J	Ingles Daniel, farmer	w hf 17, 4	M F, Jt O	6
285	J	Ingles Edward, farmer	w hf 17, 4	M F, Jt O	6
283	J	Ingles Joseph, farmer	w hf 17, 4	M F, Jt O	6
644	J	Jarvis James S, farmer	cen pt 18, 8	M F, O	5
558	J	Jarvis James, farmer	e hf 19, 6	M F, O	12
559	J	Jarvis J J, farmer	e qr 19, 7	M F, O	12
366	J	Kimball James, farmer	s e cor 16, 5	M F, O	6
562	J	Kemp Alfred, farmer	w hf e nf 19, 7	M F, O	12
449	J	Leaper William, farmer	s qr 13, 6	M F, O	2
450	J	Leaper Charles, farmer	s qr 13, 6	M F, Jt O	2

TOWNSHIP OF MOORE

21

Owner, Tenant, F.S.,M.F.	P. O. Add ^{ns}	No. ON ROLL	Juror	NAME AND OCCUPATION.	LOT, CONCES- SION OF STREET	Owner, Tenant, F.S.,M.F.	P. O. Add ^{ns}
M F, T	2	451	J	Leaper Joseph, farmer	s qr 13, 6	M F, Jt O	2
M F, O	12	563	J	Long Arthur, farmer	w hf 19, 7	M F, O	12
F, Jt O	12	354	J	McEwen Peter, farmer	e hf 14, 4	M F, O	6
F, Jt O	12	280	J	McDonald Allan, farmer	s e qr 16, 4	M F, O	6
M F, O	12	281	J	McDonald Alex, farmer	n w qr 16, 4	M F, O	6
M F, O	12	282	J	McDonald Michael, farmer	e hf 17, 4	M F, O	6
F, Jt O	12	357	J	Menzies Alexander, farmer	n qr, 13, 14, 5	M F, O	2
M F, O	12	353	J	Menzies William, farmer	s hf e hf 13, 14, 5	M F, O	2
M F, O	12	433	J	McDonald Richard, bailiff	e qr 14, 6	M F, O, Sarnia	
M F, O	12	530	J	McBean Lewis, farmer	e hf 10, 7	M F, O	2
F, Jt O	5	533	J	McBean John A, farmer	w hf 10, 7	M F, O	2
M F, Jt O	12	535	J	Marsh John, farmer	w hf 11, 7	M F, Jt O	2
F, Jt O	12	538	J	Marsh Hilliard, farmer	w hf 11, 7	M F, Jt O	2
M F, O	6	724	J	McClemens John, farmer	e hf 18, 8	M F, Jt O	5
F, Jt O	5	531	J	McBean Robert, farmer	e hf 10, 7	M F, Jt O	2
M F, O	2	536	J	Marsh William H, farmer	w hf 13, 7	M F, Jt O	2
M F, O	2	539	J	McDonald William, farmer	e qr 12, 7	M F, O	2
F, Jt O	2	549	J	McDonald Adam, mason	w hf 12, 7	M F, O, Sarnia	
M F, O	5	446	J	McDonald John, farmer	w hf 10, 6	M F, Jt O	2
M F, T	5	537	J	Marsh Arthur, teacher	w hf 11, 7	M F, Jt O	2
M F, T	12	547	J	McKay Alexander, farmer	w hf e hf 16, 7	M F, O	12
M F, O	4	548	J	McDonald Neal, farmer	w hf 16, 7	M F, O	12
M F, O	12	641	J	Medley Francis, farmer	e pt 18, 8	M F, Jt O	5
F, Jt O	6	642	J	Medley James, farmer	e pt 18, 8	M F, Jt O	5
F, Jt O	12	723	J	McClemens Richard, farmer	e hf 18, 9	M F, Jt O	5
F, Jt O	12	721	J	McClemens James, farmer	e hf 18, 9	M F, Jt O	5
F, Jt O	6	722	J	McClemens A, farmer	e hf 18, 9	M F, Jt O	5
F, Jt O	12	643	J	Medley Robert, farmer	e pt 18, 8	M F, Jt O	5
F, Jt O	6	720	J	McClemens R jr, farmer	e hf 18, 9	M F, Jt O	5
M F, O	6	270	J	Munday John, farmer	s e pt 13, 4	M F, O	6
M F, O	6	532	J	McBean George, farmer	e hf 10, 7	M F, Jt O	2
M F, O	12	361	J	Nicholson William, farmer	n hf 15, 5	M F, Jt O	6
M F, O	12	362	J	Nicholson Wm J, farmer	n hf 15, 5	M F, Jt O	6
F, Jt O	12	365	J	Piggot Henry, farmer	n e qr 16, 5	M F, O	6
M F, O	12	467	J	Roan Thomas, farmer	w hf e hf 18, 6	M F, Jt O	12
F, Jt O	6	469	J	Robbins Albert, farmer	n w qr 18, 6	M F, O	12
M F, O	6	468	J	Roan Patrick, farmer	w hf e hf 18, 6	M F, Jt O	12
M F, O	12	725	J	Smith Robert J, farmer	w hf 18, 9	M F, O	5
F, Jt O	6	719	J	Smith Henry, farmer	e hf w hf 17, 9	M F, O	5
F, Jt O	6	369	J	Shaw Phelan, farmer	w hf 17, 5	M F, O	6
F, Jt O	6	444	J	South Samuel J, farmer	e hf 10, 6	M F, O	2
M F, O	5	551	J	Starr Mathew, farmer	w qr 17, 7	M F, O	12
M F, O	12	557	J	Smith Thomas, farmer	w qr 18, 7	M F, O	12
M F, O	12	638	J	Smith Oliver, farmer	e hf 17, 8	M F, O	5
M F, O	12	640	J	Smith Peter, farmer	w hf 17, 8	M F, O	5
M F, O	6	645	J	Smith John, farmer	w qr 18, 8	M F, Jt O	5
M F, O	12	646	J	Smith Wesley, farmer	w qr 18, 8	M F, Jt O	5
M F, O	2	712	J	Smith Henry M, farmer	e hf 16, 9	M F, Jt O	5
F, Jt O	2	713	J	Smith Samuel, gentleman	e hf 16, 9	M F, Jt O, Sarnia	
F, Jt O	2	552	J	Starr James, farmer	w qr 17, 7	M F, Jt O	12

No. ON ROLL	Juror	NAME AND OCCUPATION.	LOT, CONCESSION OR STREET	Owner, Tenant, F.S., M.F.	P. O. Address
371	J	Taggart Wm, farmer	n hf 18, 5	M F, O	6
277	J	Wells William, farmer	w hf 15, 4	M F, O	6
275	J	Wells William, farmer	w pt e pt 15, 4	M F, O	6
637	J	White Alexander, farmer	w 3-4 16, 8	M F, T	5

PART NO. 2.—Persons entitled to vote at Municipal Elections only. Polling Sub-Division No. 5.

708		Anderson Mrs Anne, widow	e hf 17, 9	Jt Owner	5
364		Attridge Mrs Sophie, widow	s e qr 16, 5	Owner	6
727		Brown Mrs M, widow	w qr 17, 9	Jt O	5
728		Brown Miss Mary, spinster	w qr 17, 9	Jt O	5
729		Brown Miss Annie, spinster	w qr 17, 9	Jt O	5
716		Cruickshank Mrs E, widow	w hf 16, 9	Jt O	5
448		Courtney Mrs Jane, widow	w hf 11, 6	Jt O	2
555		Eyre Mrs Anne, widow	e hf 18, 7	Jt O	12
273		Hand Mrs Robert, M W	e pt 15, 4	Jt O	6
445		McDonald Mrs Jane, widow	e hf 11 w hf 10, 6	Jt O	2
466		Roan Mrs Ellen, widow	w hfe hf 18, 6	Jt O	12
549		Ryan Mrs M, arg't widow	e hf w hf 17, 7	Owner	12
556		Ryan Mrs Mary, widow,	e hf w hf 17, 7	Jt O	12
276		Ramsey David, farmer	e qr 15, 3	Jt O	12

PART III.—Persons entitled to vote at Elections to the Legislative Assembly only.—Polling Sub-Division No. 5.

360		Purcell William, farmer	15, 5	M F	6
714		Rogers George, farmer	e hf 16, 9	M F	5
370		Robb Thomas, farmer	w hf 17, 5	M F	6

Polling Sub-Division No. 6.

PART NO. 1.—Persons entitled to vote at both Municipal Elections and Elections to the Legislative Assembly.

SCHEDULE OF POST OFFICES—13, Sarnia; 14, Skyeston; 8, Logierait; 10, Osborne; 12, Petrolea; 15, Lucasville.

POLLING SUB-DIVISION NO 6—Comprising lots 1 to 15, both inclusive, in the 10th, 11th and 12th concessions. Polling in the schoolhouse at Providence.

No. ON ROLL	Juror	NAME AND OCCUPATION.	LOT, CONCESSION OR STREET	Owner, Tenant, F.S., M.F.	P. O. Address
970	J	Ansell Frederick, farmer	e hf 6, 12	M F, Jt T	10
971	J	Ansell William farmer	e hf 6, 12	M F, Jt T	10
785	J	Allingham Ruben, farmer	e hf 10, 10	M F, Jt O	14
785	J	Allingham Andrew, farmer	e hf 10, 10	M F, Jt O	14
792	J	Alexander William, farmer	e qr 12, 10	M F, Jt O	14

TOWNSHIP OF MOORE.

Owner, Tenant, F.S.M.F P.O. Address

M F, O 6
M F, O 6
M F, O 6
M F, T 5
ons only. Poll.

Jt Owner 5
Owner 6
Jt O 5
Jt O 5
Jt O 5
Jt O 5
Jt O 2
Jt O 12
Jt O 6
Jt O 2
Jt O 12
Owner 12
Jt O 12
Jt O 12

gislative Assem-
M F 6
M F 5
M F 6

Elections and
; 8, Logierait;
both inclusive,
ouse at Provi-

Owner, Tenant, F.S.M.F P.O. Address

M F, Jt T 10
M F, Jt T 10
M F, Jt O 14
M F, Jt O 14
M F, Jt O 14

No. ON ROLL	Juror.	NAME AND OCCUPATION.	LOT, CONCESSION OF STREET	Owner, Tenant, F.S.M.F	P.O. Address
791	J	Alexander James, farmer	e qr 12, 10	M F, Jt O	14
787	J	Allingham Alfred, farmer	w hf 10, 10	M F, t O	14
788	J	Allingham A jr, farmer	e hf 10, 10	M F, Jt O	14
799	J	Abra James, farmer	w hf e hf 14, 10	M F, O	14
1028	J	Bell Christopher S, farmer	e hf 15, 12	M F, Jt O	15
1025	J	Bell Adam, farmer	e hf 15, 12	M F, Jt O	15
1024	J	Bell Adam C, farmer	w hf 14, 12	M F, O	15
772	J	Bell George jr, farmer	e 3-4 5, 10	M F, O	14
780	J	Boyle John R, farmer	e hf 8, 10	M F, O	14
846	J	Bruton John, farmer	n qr 3, 11	M F, Jt O	10
847	J	Bruton Fredrick, farmer	n 3-4 3, 11	M F, Jt O	10
794	J	Bell John, farmer	w qr 12, 10	M F, Jt O	14
884	J	Burr Reuben N, farmer	e hf 15, 11	M F, O	8
885	J	Burr James R, farmer	w hf e hf 14, 11	M F, O	8
1027	J	Bell Alexander, farmer	e hf 15, 12	M F, Jt O	15
781	J	Boyle Alfred, farmer	e hf 8, 10	M F, O	14
764	J	Bruce Alex, farmer	pt 3, 10	M F, O	14
842	J	Bayles John R, farmer	e hf 2, 11	M F, T	14
1026	J	Bell William C, farmer	e hf 15, 12	M F, Jt O	15
1012	J	Crawford Archibald, farmer	e qr 12, 12	M F, O	15
1018	J	Crockard Alex, farmer	e hf 13, 12	M F, Jt O	15
1017	J	Crockard Wm, farmer	e hf 13, 12	M F, Jt O	15
1011	J	Crawford David, farmer	e qr 12, 12	M F, O	15
929	J	Craise Robert, farmer	n e cor 1, 12	M F, T	10
800	J	Callum John, farmer	w hf 14, 10	M F, O	8
857	J	Callum Andrew, farmer	w qr 6, 11	M F, O	14
860	J	Cranston Charles, farmer	w hf 8, 11	M F, O	14
1005	J	Crosbie Gilbert, farmer	pt w hf 10, 12	M F, O	10
1004	J	Crockard Clarence, farmer	s pt w hf 10, 11	M F, O	10
801	J	Callum Wm J, farmer	w hf 14, 10	M F, Jt O	8
802	J	Callum Frederick, farmer	w hf 14, 10	M F, Jt O	8
850	J	Colter James, farmer	5, 11	M F, T	10
1015	J	Dicer Thomas, farmer	w hf e hf 12, 12	M F, O	10
940	J	Dundass John, farmer	pt n qr 1, 12	M F, T	10
848	J	Duncan Joseph, farmer	w hf e hf 4, 11	M F, O	10
1014	J	Dicer George, farmer	w hf e hf 12, 12	M F, Jt O	15
1013	J	Dicer James, farmer	w hf e hf 12, 12	M F, O	15
887	J	Degursie Francis, farmer	w hf 15, 11	M F, Jt O	8
839	J	Duncan David, farmer	s hf n hf 1, 11	M F, Jt O	14
977	J	Duncan Robert, farmer	w hf 4, 11	M F, O	14
886	J	Degursie Peter, farmer	w hf 15, 11	M F, Jt O	8
979	J	Elliott Wm, farmer	e hf 8, 12	M F, Jt O	10
980	J	Elliott Arthur W, farmer	e hf 8, 12	M F, Jt O	10
974	J	Elliott John M, farmer	w hf 6, 12	M F, O	10
782	J	Fleck Alfred, farmer	w hf 8, 10	M F, O	14
793	J	Ford John, farmer	cen 12, 10	M F, O	14
882	J	Ford Wm, farmer	w hf 14, 11	M F, Jt O	14
803	J	Fleck Charles M, farmer	e hf 15, 10	M F, O	8

No. ON ROLL	Juror.	NAME AND OCCUPATION.	LOT, CONCESSION OF STREET	Owner, Tenant, F.S., M.F.	P. O. Add'ns
804	J	Fleck Robert, farmer	w hf 15, 10	M F, O	8
773	J	Font Walter, farmer	w qr 5, 10	M F, T	14
883	J	Ford Wm jr, farmer	w hf 14, 11	M F, Jt O	14
767	J	Glover James, farmer	n w qr 4, 10	M F, O	14
789	J	Goodall James, farmer	cen 11, 10	M F, O	14
870	J	Goodall John, farmer	w hf e hf 11, 11	M F, O	14
758	J	Goodson John, farmer	1, 10	M F, O	14
768	J	Glover George, farmer	n w qr 4, 10	M F, Jt O	14
1029	J	Hossie John, farmer	w hf 15, 12	M F, O	10
778	J	Heal John, farmer	e hf 7, 10	M F, O	10
759	J	Hair Thomas farmer	e hf 2, 10	M F, O	14
760	J	Hair Robert, farmer	w hf 2, 10	M F, Jt O	14
777	J	Heal Robert, farmer	e hf 7, 10	M F, Jt O	14
943	J	Hodgins George, farmer	w hf 1, 12	M F, O	10
944	J	Hodgins David, farmer	w hf 1, 12	M F, Jt O	10
951	J	Heal Richard, oil operator	pt w hf 2, 12	M F, T	10
952	J	Heyland John, farmer	w hf 2, 12	M F, T	10
790	J	Johnston James, farmer	w qr 11, 10	M F, O	14
859	J	Joice James, farmer	w hf 7, 11	M F, O	12
966	J	Jackson Calvin, farmer	w qr 4, 12	M F, O	14
840	J	Kirkpatrick Newton, farmer	s hf 1, 11	M F, O	14
945	J	Kerby George, oil operator	pt 1, 12	M F, Jt T	10
770	J	Kirk Alexander, farmer	s w qr 4, 10	M F, Jt O	10
1006	J	Leckie Gilbert T. farmer	w hf 3, 12	M F, Jt O	10
987	J	Logan Robert, farmer	e hf 9, 12	M F, T	10
961	J	Leckie John, farmer	w hf 3, 12	M F, Jt O	10
862	J	Leckie John W, farmer	w hs 9, 11	M F, O	14
963	J	Leckie John S, farmer	w hf 3, 12	M F, O	10
962	J	Leckie Gilbert, farmer	e hf 11, 12	M F, O	10
986	J	Logan Alexander, farmer	e hf 9, 12	M F, T	10
863	J	Leckie Wm C, farmer	w hf 9, 11	M F, O	14
938	J	Lawson James, oil operator	pt w hf e hf 1, 12	M F, T	10
976	J	Lindsay Wm H, engineer	e 1-8 7, 12	M F, T	10
1019	J	Maitland James, farmer	e hf w hf 13, 12	M F, O	15
999	J	McMicken Hugh, farmer	n w qr 9, 12	M F, O	10
1008	J	Martin George, blacksmith	n w cor 11, 12	M F, O	10
762	J	Morrison Robert, farmer	n e qr 3, 10	M F, O	14
763	J	Mitchell Frances, farmer	n w qr 3, 10	M F, O	14
797	J	McGillivray Donald, farmer	n hf 13, 10	M F, Jt O	8
853	J	McLane Hector, farmer	e qr 6, 11	M F, T	8
1020	J	Maitland Robert J. farmer	e hf w hf 13, 12	M F, O	8
686	J	McLean Duncan, farmer	s hf 3, 10	M F, T	14
795	J	McLaren John, farmer	e hf 13, 10	M F, O	14
798	J	McGillivray Angus, farmer	w hf 13, 10	M F, Jt O	14
796	J	McGillivray Arch, farmer	w hf 7, 10	M F, Jt O	14
876	J	Maitland John D, farmer	w hf e hf 13, 11	M E, Jt O	8
878	J	Maitland Neil, farmer	w hf e hf 13, 11	M F, Jt O	8
879	J	Maitland Andrew, farmer	w hf e hf 13, 11	M F, Jt O	8

TOWNSHIP OF MOORE.

25

Owner, Tenant, F.S.M.F	P. O. Address	No. ON ROLL	Juror.	NAME AND OCCUPATION.	LOT, CONCESSION OF STREET	Owner, Tenant, F.S.M.F	P. O. Address
M F, O	8	877	J	Maitland David, farmer	w hf e hf 13, 11	M F, Jt O	8
M F, T	14	8-0	J	Maitland James, farmer	w hf e hf 13, 11	M F, Jt O	8
M F, Jt O	14	1000	J	McMicken Hugh jr, farmer	n w qr 9, 12	M F, Jt O	10
M F, O	14	873	J	McLennan Daniel, farmer	w 3-4 12, 11	M F, Jt O	14
M F, O	14	872	J	McLennan Joseph, farmer	w 3-4 12, 11	M F, Jt O	14
M F, O	14	875	J	McLaren Lachlan, farmer	e qr 13, 11	M F, O	14
M F, O	14	969	J	McMahon Frederick, farmer	w hf 5, 12	M F, O	10
M F, Jt O	14	968	J	McMahon Alfred A, farmer	e hf 5, 12	M F, O	10
M F, O	10	947	J	McLellan Donald, farmer	e hf 2, 12	M F, Jt O	10
M F, O	10	948	J	McLellan Archibald, farmer	e hf 2, 12	M F, Jt O	10
M F, O	10	949	J	McLellan Malcolm, farmer	e qr 3, 12	M F, Jt O	10
M F, O	10	964	J	McLellan James D, farmer	e qr 4, 12	M F, O	10
M F, Jt O	10	950	J	McLellan Donald jr, farmer	e qr 3, 12	M F, Jt O	10
M F, Jt O	14	765	J	Norwood James jr, farmer	e hf 4, 10	M F, Jt O	14
M F, O	10	786	J	Norwood James, farmer	e hf 4, 10	M F, Jt O	14
M F, Jt O	10	1650	J	Neal Robert, farmer	w hf 13, 11	M F, O	8
M F, T	10	1009	J	Patten Thomas, farmer	s pt n w cor 11, 12	M F, O	10
M F, T	10	1032	J	Park James, farmer	e hf 14, 12	M F, O	10
M F, T	10	1023	J	Park Joseph, farmer	e hf 14, 12	M F, O	10
M F, O	14	861	J	Robertson Wm, farmer	e hf 9, 11	M F, O	14
M F, O	12	936	J	Rainsberry James, farmer	w hf e hf 1, 12	M F, O	10
M F, O	14	965	J	Rainsberry Walter, farmer	cen 4, 12	M F, O	10
M F, O	10	953	J	Rainsberry John, farmer	w hf 2, 12	M F, O	10
M F, Jt O	10	937	J	Rainsberry Richard, farmer	w hf e hf 1, 12	M F, O	10
M F, Jt O	10	1002	J	Robinson Thomas, farmer	e hf 10, 12	M F, O	10
M F, Jt O	10	858	J	Sim Alex, farmer	e hf 8, 11	M F, T	14
M F, T	10	776	J	Sykes Walter, farmer	n w qr 6, 10	M F, O	14
M F, Jt O	10	854	J	Sykes John, farmer	w qr 5, 10	M F, O	14
M F, O	14	1007	J	Smith John W, blacksmith	e qr 14, 10	M F, O	14
M F, O	10	855	J	Sinclair Wm, farmer	w hf e hf 6, 11	M F, Jt O	14
M F, O	10	856	J	Sinclair James J, farmer	w hf e hf 6, 11	M F, Jt O	14
M F, T	10	761	J	Saunders Albert, farmer	w hf 2, 10	M F, Jt O	14
M F, O	14	1648	J	Smith Joseph, farmer	w hf 23, 11	M F, Jt T	8
M F, T	10	1649	J	Smith Samuel, farmer	w hf 13, 11	M F, Jt T	8
M F, T	10	783	J	Thornton Edwin, farmer	w hf 9, 10	M F, Jt O	14
M F, O	15	844	J	Tomlinson Nicholas, farmer	e pt w hf 2, 11	M F, T	10
M F, O	10	1016	J	Webster Henry, farmer	w hf 12, 12	M F, F	10
M F, O	10	975	J	Woodsley Geo, oil operator	e hf 7, 12	M F, O, Coplestone	
M F, O	14	871	J	Wray Wm J, farmer	w hf 11, 11	M F, O	14
M F, O	14	849	J	Wilson Peter, farmer	e qr 4, 11	M F, O	14
M F, Jt O	8	866	J	Wray Wm, farmer	w hf 10, 11	M F, Jt O	14
M F, T	8	867	J	Wray Joseph, farmer	w hf 10, 11	M F, Jt O	14
M F, O	8	757	J	Wright Geo, farmer	1, 10	M F, Jt O	14
M F, T	14	868	J	Wray Frederick, farmer	e qr 11, 10	M F, Jt O	14
M F, O	14	869	J	Wray Frank, farmer	e qr 11, 11	M F, Jt O	14
M F, Jt O	14	755	J	Wright David, farmer	1, 10	M F, Jt O	14
M F, Jt O	14	756	J	Wright John, farmer	1, 10	M F, Jt O	14
M F, Jt O	8	775	J	Windover Chas, farmer	e hf 6, 10	M F, Jt O	14
M F, Jt O	8	774	J	Windover Milton, farmer	e hf 6, 10	M F, Jt O	14
M F, Jt O	8	982	J	Webster Wm, farmer	s pt w hf 8, 11	M F, Jt T	10

No. on Roll	Juror	NAME AND OCCUPATION.	LOT, CONCESSION OR STREET	Owner, Tenant, F.S.M.F	P. O. Address
983	J	Webster James, farmer	s pt w hf 8, 12	M F, Jt T	10
933	J	Watson Ed, oil operator	n hf e qr 1, 12	M F, T	10
985	J	Young David, farmer,	w hf 8, 12	M F, O	10
955	J	Young Philemon, engineer	n hf e hf 3, 12	M F, T	10

PART NO. 2—Persons entitled to vote at Municipal Elections only. Polling Sub-Division number 6.

771		Bell Mrs Geo, farmer,	e 3-4 5, 10	Jt O	10
779		Boyle Mrs Anne E, farmer	e hf 8, 10	Jt O	14
841		Bailey Mrs Jane, farmer	e hf 2, 11	Tenant	14
994		Carr Benj, gentleman	e pt w hf 8, 12,	Owner, Sarnia	
936		Corey P B, oil operator	pt w hf e hf e, 12	t O	10
957		Corey Harrison, oil operator	pt w hf e hf e, 12	Jt O	10
851		Dawson Robert, farmer	5, 11	Owner, Petrolia	
845		Englehart J L, oil operator	e qr 3, 11	Owner, Petrolia	
1001		Garvey M C, barrister	s w qr 9, 12	Owner, Sarnia	
769		Kirk Mrs Marg't, farmer	e w qr 4, 10	Owner	14
931		Kenny Randall, merchant	pt n hf e hf 1, 12	Jt O, Sarnia	
1010		Lackie Mrs Catherine, fmr	w hf 11, 12	Jt O	10
1021		Maitland Mrs A, widow	w qr 13, 12	Jt O	10
932		Matheson Geo, customs	pt n hf e qr 4 1, 12	Jt O, Sarnia	
874		McLennan Mrs E, farmer	w 3-4 12, 11	Jt O	10
972		McLaren Donald, gentleman	e hf 6, 12	Owner, Sarnia	
988		Pigot John,	e hf 9, 12	Owner, London	
934		Rainsberry Nicholas, farmer	e hf 9, 12	Owner	10
939		Rowles Charles, merchant.	pt w hf e hf 1, 12	Owner, Petrolia	
946		Ray Robert A, oil operator	pt w hf 1, 12	Tenant, Oil Springs	
843		Taylor Peter, farmer	e hf 2, 11	Owner, Sarnia	
981		Vantyle S B, merchant	pt e hf 8, 12	Owner, Petrolia	

PART NO. 3—Persons entitled to vote at elections to the Legislative Assembly only. Polling Sub-Division number 6.

930		Boice William, engineer	n e cor 1, 12	M F	10
1003		Daley Michael, farmer	e hf 10, 12	M F	10
855		Darrough Wm, farmer	s e qr 10, 11	M F	14
967		Gray Alex, farmer	w qr 4, 12	H, M F	10
942		Hamilton Wm, engineer	pte qr 1, 12	M F	10
958		Hall Geo, teamster	w hf e hf 3, 12	M F	10
935		Keen Charles, teamster	e qr 1, 12	M F	10
864		Maitland Andrew, farmer	w hf 9, 11	M F	14
973		McGrath James, sailor	e hf 6, 12	M F	10
978		McMicken Hugh, laborer	w hf 7, 12	M F	10
941		Preston Richard, laborer	pt 1, 12	M F	10
960		Thomson Walter, laborer	e qr 3, 12	M F	10
784		Thornton Watson, farmer	w hf 9, 10	M F	10
852		Wilkins Clement, farmer	5, 11	M F	14
959		Young James, farmer	w hf e hf 3, 12	M F	10

NO. ON ROLL	Jurat	NAME AND OCCUPATION.	LOT, CONCESSION OR STREET	Owner,	P. O Address
				Tenant. F. S., M. F.	
1530	J	Cunningham Jno, gentleman	58 Bos sy, Bridgen	M F, O	2
1529	J	Clark Edward, lumberman	75, 76 Bos sy, Bridgen	M F, O	2
1595	J	Colborn Philip, tinsmith	s hf 4 Duncan's sy, Brig	M F, Jt O	2
1607	J	Cann-n Geo, drayman	e 1-3 9 e 1-3 10 D's sy B'n	M F, O	2
29	J	Campbell Duncan, farmer	s hf n hf 6, 1	M F, Jt O	2
1570	J	Colton J B, tea-her	9, 10 Hayne's sy, Bridgen	M F, T	2
1502	J	Colver Orlado, druggist	8 Bos sy, Bridgen	M F, T	1
1589	J	Campbell James, laborer	s hf 11, 12, 13 Lucas sy	M F, O	2
1500		Dowd John, laborer	36 Lucas sy, Bridgen	M F, T	2
1637	J	Duncan J S, clerk	pt s w qr 6, 5, Bridgen	M F, O	2
89	J	Duncan Wm, farmer	e hf 5, 2	M F, O	2
334	J	Duncan Peter, farmer	n hf 6, 5	M F, O	2
1569	J	Dawson Abram, gentleman	3 e hf 4 Haynes sy Brig	M F, O	2
255	J	Duffy Erastus, merchant	n hf 6, 4	M F, O	2
240	J	Edwards John, farmer	e qr 3, 4	M F, O	2
244	J	Edwards Wm, farmer	s hf 4, 4	M F, O	2
241	J	Edwards Charles, farmer	e qr 3, 4	M F, Jt O	2
1612	J	Fisher Donald, mechanic	s hf 9 s hf 10 Lucas sy B'n	M F, T	2
1558	J	Fisher Albert J, physician	4 Bos sy, Bridgen	M F, T	2
1624	J	Fitchett James, laborer	29, 30, 31 Lucas sy	M F, O	2
1508	J	Gibson John M, blacksmith	49, 50 Bos sy	M F, Jt O	2
1509	J	Gibson James, carpenter	46, 50 Bos sy	M F, Jt O	2
236	J	Good Wm, farmer	n qr 1, 4	M F, O	2
336	J	Grant John, farmer	n hf 7, 5	M F, O	2
1564	J	Grant James, farmer	e hf w hf 7, 4	M F, O	2
1618	J	Grimes Jno F, station agent	17 Lucas sy	M F, T	2
1576	J	Hume Robt M, drover	13, 14 blk e Haynes sy	M F, O	2
257	J	Hayes Alex, hotel keeper	n e cor 7, 5	M F, Jt O	2
1581	J	Hales Hiram, brickmaker	n w pt s hf 7, 5	M F, O	2
1582	J	Hales Wm H, brickmaker	n w pt s hf 7, 5	M F, Jt O	2
337	J	Hill Joseph, clergyman	pt s hf 6, 5	M F, T	2
1591	J	Hayne Thomas, merchant	cen pt s hf 7, 5	M F, O	2
1556	J	Hayne Rufus, clerk	36 Bos sy, Bridgen	M F, Jt O, Detroit	
1592	J	Hayne John J, merchant	grain house pt 7, 5	M F, Jt O	2
232	J	Hossie Geo, farmer	s qr 1, 4	M F, O	2
1504	J	Harkness Joseph, merchant	60, 61 Bos sy	M F, Jt O	2
1503	J	Harkness A S, merchant	60, 61 Bos sy	M F, O	2
333	J	Hoskins James, farmer	5, 5	M F, O	2
258	J	Hays John B, hotel keeper	n e cor 7, 4	M F, Jt O	2
19	J	Hunt John E, farmer	n pt 4, 1	M F, O	2
321	J	Johnston Richard, farmer	e pt 1, 5	M F, O	2
330	J	Johnston David S, farmer	e hf 4, 5	M F, O	2
331	J	Johnston Geo A, farmer	w hf 4, 6	M F, O	2
1515	J	Johnston J W, V. S.	47 Bos sy, Bridgen	M F, O	2
1510	J	Johnston Foster, blacksmith	78 Bos sy	M F, O	2
243	J	Knight John, farmer	w hf 4	M F, O	2

TOWNSHIP OF MOORE.

29

Owner, Tenant, F.S., M.F.	P. O. Add'ess	No. ON ROLL	Juror.	NAME AND OCCUPATION.	LOT, CONCESSION OR STREET	Owner, Tenant, F.S., M.F.	P. O. Add'ess
M F, O	2	1533	J	Long Wm, engineer	34 Lucas sy, Brigden	M F, T	2
M F, O	2	1501	J	Leater James, farmer	80 Bos sy	M F, O	2
M F, Jt O	2	1541	J	Leacock Thos, blacksmith	66 Bos sy	M F, O	2
M F, O	2	1632	J	Leacock Henry, tp treas	23, 24, 25, 26 Lea's sy, Brig	M F, O	2
M F, Jt O	2	85	J	Lusk Wm, farmer	w hf e hf 3, 2	M F, T	2
M F, T	2	86	J	Lusk John, farmer	w hf e hf 3, 2	M F, Jt T	2
M F, O	2	1580	J	May Henry, laborer	pt s hf 7, 5	M F, Jt O	2
M F, T	2	351	J	McDonald Robt, farmer	w hf 11, 5	M F, O	2
M F, O	2	1617	J	McCatty Wm, sailor	18 Lucas sy, Brigden	M F, T	2
M F, O	2	165	J	McKenzie Jno S. farmer	e hf 4, 3	M F, O	2
M F, O	2	84	J	McFarlane Alex, farmer	w hf 2, 2	M F, O	2
M F, O	2	339	J	McKenzie Peter A. farmer	w hf 8, 5	M F, Jt O	2
M F, O	2	1516	J	Munday Hugh, laborer	44 Bos sy, Brigden	M F, O	2
M F, O	2	341	J	McKenzie Findlay, mer	w hf e hf 7, 4	M F, O	2
M F, O	2	1577	J	Mills Wm, carpenter	11, 12 Bl'k E Hy's sy	M F, O	2
M F, O	2	1527	J	McNair Thos, clergyman	56, 57 Bos sy, Brigden	M F, T	2
M F, O	2	1605	J	McDonald Hugh, clerk	12 Duncan sy	M F, Jt O	2
M F, Jt O	2	1579	J	May John, engineer	pt s hf 7, 5	M F, O	2
M F, T	2	1538	J	Moore Stephen, agent	72, 73 Bos sy, Brigden	M F, O	2
M F, T	2	1517	J	Maguire Wm, barber	43 Bos sy, Brigden	M F, O	2
M F, O	2	1493	J	Monroe T H, merchant	s hf 5 Bos sy 4 L's sy, B'n	M F, T	2
M F, O	2	1494	J	McDonald David, merchant	s hf 5, Bos sy, Brigden	M F, T	2
M F, Jt O	2	1627	J	McDonald John, laborer	50 Lucas sy, Brigden	M F, T	2
M F, Jt O	2	247	J	McIntosh John, farmer	e hf 5, 4	M F, O	2
M F, O	2	1566	J	McKee John, clergyman	1, 2 Haynes sy, Brig	M F, Jt O	2
M F, O	2	2	J	Murphy Thos, farmer	n e qr 1, 1	M F, Jt O	2
M F, O	2	3	J	Murphy Patrick, farmer	n e qr 1, 1	M F, Jt T	2
M F, O	2	4	J	Murphy Michael, farmer	n e qr 1, 1	M F, Jt T	2
M F, T	2	1678	J	McDonald Wm, laborer	n hf 49, 50 Lucas sy	M F, Jt O	2
M F, O	2	88	J	McCauley Alex, farmer	4, 2	M F, T	2
M F, Jt O	2	1506	J	Manley Wm, saddler	s hf 10 Bos sy, Brigden	M F, T	2
M F, O	2	1545	J	Misner Frank, laborer	89 e hf 90 Bos sy, Brig	M F, T	2
M F, Jt O	2	1608	J	Norwood James, mason	pt 1 & 4 Lucas sy, Brigden	M F, O	2
M F, T	2	332	J	Nesbit Arch, farmer	s e cor 5, 5	M F, O	2
M F, O	2	1568	J	Newell John, weaver	1, 2 B C Hy's sy, Brig	M F, O	2
M F, O	2	1489	J	Nicholson R J, saddler	1 Bos sy, Brigden	M F, T	2
M F, Jt O, Detroit	2	1623	J	Osborne Richard, laborer	35 Leacocks sy	M F, O	2
M F, O	2	11	J	Olds George, farmer	n hf w hf 3, 1	M F, O	2
M F, O	2	249	J	Parr Frederick, farmer	s hf 6, 4	M F, Jt O	2
M F, O	2	250	J	Parr Wm G, butcher	s qr 7, 2	M F, F S	2
M F, Jt O	2	251	J	Parr David, butcher	s hf 6, 4	M F, F S	2
M F, O	2	252	J	Parr Charles, farmer	s hf 6, 4	M F, Jt O	2
M F, O	2	1590	J	Parr Robt, liveryman	3 Duncan sy	M F, O	2
M F, O	2	263	J	Potter Joseph, farmer	w hf 9, 4	M F, O	2
M F, O	2	262	J	Potter George, farmer	e hf 9, 4	M F, O	2
M F, O	2	1571	J	Pottinger Wm, laborer	2 hf 3 Haynes sy	M F, O	2
M F, O	2	1552	J	Regan John, laborer	pt 7, 5	M F, O	2
M F, O	2	233	J	Rattray Peter, farmer	cen 1, 4	M F, O	2
M F, O	2	234	J	Rattray Peter G, farmer	cen 1, 4	M F, Jt O	2

No. ON ROLL	Juror.	NAME AND OCCUPATION.	LOT, CONCESSION OR STREET	Owner, Tenant, F.S., M. F.	P. O. Address
1636	J	Rogers Thomas, farmer	s hf 6, 5	M F, T	2
1561	J	Rose Joseph, laborer	4, 5 bl'k A Hy's sy, orig	M F, O	2
1930	J	Ruebotham Wm, gardener	47, 48 Lucas sy, Brigden	M F, O	2
1597	J	Smith Alex, shoemaker	n hf 6 D's sy, Brigden	M F, T	2
159	J	Stephens Louis, farmer	1, 2, 3, 3	M F, Jt O	2
1563	J	Smith Thos C, laborer	n e cor F'dy lot	M F, O	2
1511	J	Spooner Geo, hotel keeper	12, 13, 14 Bos sy	M F, O	2
1625	J	Scott Wm, laborer	45, 46 Lucas sy	M F, O	2
1539	J	Stewart Robt, jointer	63 Bos sy	M F, O	2
1573	J	Smith Walter, laborer	5, 6 B'lk D Hy's sy	M F, Jt O	2
18	J	Sinclair Thos, farmer	n hf w hf 3, 1	M F, O	2
21	J	Sinclair Lawrence, farmer	s w pt 4, 1	M F, O	2
1551	J	Smith Thos, farmer	97 Bos sy	M F, O	2
242	J	Shaw Donald, farmer	w hf 3, 4	M F, O	2
245	J	Staples Wm, farmer	n hf 4, 4	M F, O	2
323	J	Shaw James, farmer	w hf 1, 5	M F, O	2
324	J	Scott Henry, farmer	e hf 2, 5	M F, O	2
3-9	J	Scott John, farmer	n pt w hf 2, 5	M F, O	2
1619	J	Sinclair W C, clerk	16 Lucas sy, Brigden	M F, T	2
158	J	Stephens Byron, farmer	1, 2, 3, 3	M F, Jt O	2
246	J	Staples Wm A, farmer	n hf 4, 4	M F, Jt O	2
328	J	Scott James, farmer	w hf 2, 5	M F, T	2
327	J	Scott Andrew, farmer	s pt w hf 2, 5	M F, O	2
342	J	Shaw James, farmer	62 Bos sy	M F, O	2
344	J	South Eli, farmer	n hf 9, 5	M F, O	2
1572	J	Smith John, laborer	5, 6, B'lk D Hy's sy, Brig	M F, O	2
1583	J	Shaw Robt, merchant	31, 32 Bos sy, Brigden	M F, O	2
1549	J	Smith Wm H, blacksmith	93 Bos sy, Brigden	M F, O	2
1513	J	Seager F R, physician	pt 13, 14, 15 Bos sy, Brig	M F, O	2
1598	J	Silverthorn John, baker	n hf 6 Duncans sy, Brig	M F, O	2
10	J	Stamm Wm, farmer	s 3-4 e hf 2, 1	M F, O	2
325	J	Scott Gideon, farmer	e hf 2, 5	M F, Jt C	2
1578	J	Shaw Peter, carpenter	6 blk E Hy's sy, Brigden	M F, O	2
1	J	Tederington John, farmer	s hf 1, 1	M F, O	2
256	J	Tye Frank C, farmer	w qr 7, 4	M F, O	2
27	J	Taylor Alex, farmer	s qr 6, 1	M F, O, Bradshaw	2
31	J	Taylor Peter, farmer	n qr 6, 1	M F, O, Bradshaw	2
325	J	Taylor John, laborer	cen pt 1, 5	M F, T	2
1594	J	Vizard John, miller	48 Bos sy, Brigden	M F, T	2
1526	J	Watson John, laborer	52 Bos sy, Brigden	M F, O	2
1547	J	Wynn John B, gentleman	w 1/2 90 91 e 1/2 2, B's sy, Bn	M F, Jt O	2
28	J	Wilson Andrew, farmer	n hf s hf 6, 1	M F, O	2
87	J	Watson John C, farmer	w hf 3, 2	M F, O	2
1514	J	Watson Jeremiah, farmer	45, 46 Bos sy, Brigden	M F, T	2
1613	J	Wheeler John, miller	2 Lucas sy, Brigden	M F, T	2
1611	J	White James carpenter	5, 6 Lucas sy, Brigden	M F, O	2
1484	J	Windor Henry, undertaker	s pt 1 Bos sy, Brigden	M F, O	2
1587	J	Ward W J, banker	n hf 1 2 D's sy, Brigden	M F, O	2
416	J	Welsh James, farmer	s qr 6, 6	M F, O	2
167	J	Young George, farmer	w hf 4, 3	M F, O	2

NO ON ROLL	Juror.	NAME AND OCCUPATION.	LOT, CONCESSION OR STREET	Owner, Tenant, F.S., M.F.	P. O. Address
1496		Telford Laura Mrs, widow	53 Bos sy, Brigden	Tenant	2
1497		Telford Miss O, merchant	53, 6 Bos sy, Brigden	Owner	2
235		Taylor George, carpenter	e qr 3, 2	Owner, Sarnia	
234		Young Wm B, clerk	e qr 7, 4	Jt O, Detroit	
254		Young Edward R, clerk	e qr 7, 4	Jt O, Detroit	
1548		Wynr Mrs Annie, m. w.	pt 90, 91 Bos sy, Brigden	Owner	2

PART NO. 3—Persons entitled to vote at Elections to the Legislative Assembly only. Polling Sub-Division number 7.

1544		Black Hugh, laborer	71 Bos sy, Brigden	M F, T	2
1512		Burton John, plasterer	12 Bos sy, Brigden	M F	2
83		Brown James E, sailor	e hf 2, 2	M F	2
260		Bechtell Jessie, laborer	n w cor 7, 4	M F	2
1546		Campbell Ira, laborer	s 1-3 81 Bos sy, Brigden	M F	2
1621		Dunn Robert, plasterer	28 Lucas sy, Brigden	M F	2
81		Dodds James, laborer	n pt 1, 2	M F	2
164		Dreen Robert, laborer	w hf 4, 3	M F	2
326		Enright John, laborer	w hf 2, 5	M F	2
1554		Haverstock R, cooper	36 Bos sy, Brigden	M F, T	2
1543		Hill Benjamin, cooper	68 Bos sy, Brigden	M F	2
1486		James Charles R, laborer	w hf e hf 7, 4	M F	2
1488		Kennedy Frank, teamster	1 Bos sy	M F	2
248		Lagrice Frederick, laborer	e hf 5, 4	M F	2
1507		Lamont Wm J, saddler	s hf 10 Bos sy, Brigden	M F	2
1535		Lemon John, blacksmith	60 Bos sy, Brigden	M F	2
1600		Lillywhite H, watchmaker	w hf 9 D's sy, Brigden	M F, T	2
22		Murray Andrew, farmer	s pt w hf 4, 1	H M, F	2
1488		Nelson John, cabinet maker	1 Bos sy, Brigden	M F, T	2
1584		Newton Andrew, tailor	5 blk E Hy's sy	M F	2
1485		Nicholson J W, cab'n't mkr	1 Bos sy, Brigden	M F	2
1596		Nixon Thos, agent	n hf 4 D's sy	M F, T	2
1536		Polliard Alfred, miller	74 Bos sy, Brigden	M F	2
1585		Sutton Henry, laborer	e hf 8, 5	M F	2
166		Simson Thomas, laborer	e hf 4, 3	M F	2
1487		Sutton James, laborer	1 Bos sy, Brigden	M F	2
237		Taylor Harrold, farmer	n qr 4, 4	M F	2
352		Trace James, laborer	w hf 12, 5	M F	2
1505		Taylor Joseph E, clerk	9 Bos sy, Brigden	M F	2
1601		Walker Sylvanus, laborer	pt 9, 10 D's sy, Brigden	M F	2
20		Williamson Chas, laborer	n w qr 3, 1	M F, T	2
1588		Wade Arthur F, bank clerk	pt 6 Pdy lot, Brigden	M F	2

Polling Sub-Division No. 8.

SCHEDULE OF POST OFFICES—2, Brigden ; 5, Colinville ; 10, Ossian.

POLLING SUB-DIVISION NO 8—Comprising lots 1 to 15, both inclusive, in the 8th and 9th Concessions ; lots 1 to 9, both inclusive, in the 7th Concession ; and lots 1, 2, 3, 4, 5, n 3-4-6 and 7 and 8, and 9, inclusive, 6th Concession. Polling in Hall at Colinville

PART NO. 1.—Persons entitled to vote at both Municipal Elections and Elections to the Legislative Assembly.

No. ON ROLL	Juror	NAME AND OCCUPATION.	LOT, CONCESSION OR STREET	Owner, Tenant, F.S.,M.F.	P.O. Address
438	J	Alexander Donald, farmer	w hf 8 6	M F, O	2
631	J	Alexander James, farmer	w hf e hf 14, 8	M F, O	5
632	J	Alexander Horatio, farmer	w hf e hf 12, 9	M F, Jt O	5
666		Aiken James, farmer	w hf 1, 9	M F, O	5
667	J	Aiken Albert, farmer	w hf 1, 9	M F, O	5
395	J	Barnes Perkin, farmer	e hf 1, 6	M F, O	2
677	J	Bruton Wm, farmer	w pt 4, 9	M F, Jt O	5
611	J	Booth Henry, farmer	e hf 9, 8	M F, O	5
630	J	Butler Jno A, farmer	e qr 14, 8	M F, O	5
674	J	Bruce John, farmer	s e pt 3, 9	M F, O	5
678	J	Bruton James, farmer	w pt 4, 9	M F, Jt O	5
634	J	Butler James, farmer	w qr 14, 8	M F, O	5
502	J	Barnes Joseph, farmer	e hf 2, 7	M F, O	10
679	J	Bruton Charles, farmer	w pt 4, 9	M F, Jt O	5
701		Carter James W, farmer	e qr 12, 9	M F, O	5
618		Carter Wm, farmer	e hf w hf 11, 8	M F, Jt O	5
703	J	Carter John, farmer	w hf 11, 9	M F, O	5
700		Cranston David, farmer	e hf w hf 10, 9	M F, T	5
622	J	Druet Charles, farmer	w hf 12, 8	M F, Jt O	5
621		Druet Henry J, farmer	w hf 12, 8	M F, Jt O	5
519	J	Duncan John R, farmer	cen 7, 7	M F, O	2
623		Druet John, farmer	w hf 12, 8	M F, O	2
693	J	Emery Thomas, farmer	e qr 9, 9	M F, O	5
694	J	Emery Thos jr, farmer	e qr 9, 9	M F, F S	5
676		Fiddes James, farmer	w hf 4, 8	M F, O	5
409	J	Farquharson John, farmer	n w qr 4, e hf 5, 6	M F, O	2
675	J	Fiddes Louis C, farmer	w hf 4, 8	M F, Jt O	5
410		Farquharson Chas, farmer	e hf 5, 6	M F, Jt O	2
411		Farquharson James, farmer	e hf 5, 6	M F, Jt O	2
439	J	Gauld Peter, farmer	n hf 9, 6	M F, Jt O	2
441	J	Gauld James, farmer	n hf 9, 6	M F, Jt O	2
440	J	Gauld Geo L, farmer	n hf 9, 6	M F, Jt O	2
626	J	Garrett James, farmer	w hf 13, 8	M F, O	5
708	J	Goodall Andrew R, farmer	w hf 14, 9	M F, O	5
527		Gauld Wm, farmer	w hf 9, 7	M F, Jt O	2

Owner, Tenant, F.S.,M.F.	P.O.	Address
Tenant	2	
Owner	2	
Owner, Sarnia		
Jt O, Detroit		
Jt O, Detroit		
en Owner	2	
the Legislative		
M F, T	2	
M F	2	
M F	2	
M F	2	
M F	2	
M F	2	
M F	2	
M F	2	
M F, T	2	
M F	2	
M F	2	
M F, T	2	
M F	2	
M F	2	
M F	2	
M F	2	
M F	2	
M F, T	2	
M F	2	
M F	2	
M F	2	
M F	2	
M F, T	2	
M F	2	

TOWNSHIP OF MOORE

No. ON ROLL	Juror	NAME AND OCCUPATION.	LOT, CONCESSION OR STREET	Owner, Tenant, F.S., M.F.	P. O. Address
528	J	Gauld John, farmer	w hf 9, 7	M F, Jt O	2
627		Garrett " m farmer	w hf 13, 8	M F, Jt O	5
628		Garrett Henry, farmer	w hf 13, 8	M F, Jt O	5
529		Gauld Peter, farmer	w hf 9, 7	M F, O	2
629		Garrett Hugh, farmer	w hf 13, 8	M F, Jt O	5
607	J	Hastings Warren, farmer	w hf 8, 8	M F, Jt O	5
609	J	Hastings Perry, farmer	w hf 8, 8	M F, Jt O	5
670	J	Holmes Geo, farmer	w hf 2, 9	M F, Jt O	5
671	J	Holmes Thos, farmer	w hf 2, 8	M F, Jt O	5
610		Hastings Walter, farmer	w hf 8, 8	M F, F S	5
671		Holmes John, farmer	e qr 3, 8	M F, Jt O	10
501	J	Johnstone Thomas, farmer	n hf 1, 7	M F, O	10
615	J	King James jr, farmer	n w qr 10, 8	M F, O	5
683	J	Lionta Wm, farmer	w qr 6, 9	M F, O	5
513	J	McCauley Wm, farmer	w hf 6, 7	M F, Jt O	2
512	J	McCauley Peter, farmer	w hf 6, 7	M F, Jt O	2
684	J	McKellar John, farmer	e hf 7, 9	M F, Jt O	5
688	J	Morrison Alex, farmer	e hf 8, 9	M F, Jt O	5
685		McLean John, farmer	w hf 7, 9	M F, F S	5
689	J	Morrison John, farmer	e hf 8, 9	M F, F S	5
691	J	Morrison John S, farmer	w hf 8, 9	M F, O	5
697	J	McKellar Donald, farmer	e hf 10, 9	M F, O	5
616	J	Miller Geo, farmer	e hf 11, 8	M F, O	5
702	J	Miller Andrew, farmer	w hf e hf 11, 9	M F, O	5
698	J	McKellar John H, farmer	s hf 10, 9	M F, Jt O	5
507	J	Mannin John, farmer	e hf 5, 7	M F, Jt O	2
508	J	Mannin John jr, farmer	e hf 5, 7	M F, Jt O	2
510	J	Manning David, farmer	w hf 5, 7	M F, Jt O	2
511	J	Manning D A J, farmer	w hf 5, 7	M F, Jt O	2
421		McDonald Wm P, farmer	n 3-4 6, 6	M F, Jt O	2
417		McDonald James, farmer	n 3-4 6, 6	M F, Jt O	2
418	J	McDonald Wm, farmer	n 3 4 6, 6	M F, Jt O	2
419	J	McDonald Jas jr, farmer	e hf 6, 7	M F, Jt O	2
420	J	McDonald Alex, farmer	e hf 6, 7	M F, Jt O	2
509		Mannin Overton, farmer	e hf 5, 6	M F, Jt O	2
518		McIntosh Alex, farmer	w pt e hf 7, 7	M F, Jt O	2
690		Morrison Alex H, farmer	e hf 8, 9	M F, Jt O	2
423		McKenzie James, farmer	n hf 7, 6	M F, Jt O	2
422		McKenzie Frances, farmer	n hf 7, 6	M F, Jt O	2
596	J	McDermid Wm, farmer	w hf e hf 3, 8	M F, O	10
602	J	Miskell John, farmer	e 3-4 6, 8	M F, Jt O	2
603	J	Miskell Andrew, farmer	e 3-4 6, 8	M F, Jt O	2
604	J	Miskell Alex, farmer	e 3-4 6, 8	M F, Jt O	2
600	J	McKellar Hugh, minister	e hf 4, 8	M F, O	5
601	J	McKellar James, farmer	e 3-4 7, 8	M F, O	5
612	J	McBean James, farmer	w hf 9, 8	M F, O	5
617		Miller Mitchell, farmer	e hf 11, 8	M F, O	5
668	J	McNeil John, farmer	e hf 2, 9	M F, Jt O	10
669	J	McNeil Wm, farmer	e hf 2, 9	M F, Jt O	10

TOWNSHIP OF MOORE.

No. ON ROLL	Juror.	NAME AND OCCUPATION.	LOT, CONCESSION OR STREET	Owner, Tenant, F.S., M.F.	P. O. Address
701	J	Welsh John, farmer	w qr 10, 9	M F, O	5
705	J	Watson James, farmer	s e cor w qr 3, 9	M F, O	5
707	J	White Clement, farmer	e hf 14, 9	M F, O	5
503	J	Wilson Thos, farmer	w hf 2, 7	M F, O	10
521	J	Warren John, farmer	e hf 8, 7	M F, Jt O	2
520		Warren Duncan, farmer	e hf 8, 7	M F, Jt O	2
706		Watson Joseph J, farmer	s w qr 2, 9	M F, T	5
522		Warren Duncan jr, farmer	e hf 8, 7	M F, Jt O	2

PART NO. 2—Persons entitled to vote at Municipal Elections only. Polling Sub-Division number 8.

619		Dodds Mrs Mary, widow	e qr 12, 8	Owner	5
673		Holmes Susan, spinster	w hf 2, 9	Jt Owner	10
517		McIntosh Christina, widow	pt e hf 7, 7	Owner	2
514		McCauley Mrs Mary, widow	w hf 6, 7	Jt Owner	2
408		Watson Jeremiah, farmer	n e qr 4, 6	Jt Owner	2

PART NO. 3—Persons entitled to vote at elections to the Legislative Assembly only. Polling Sub-Division number 8.

412		Allsup Geo, laborer	n e qr 4, 6	M F	2
516		Burnett Thomas, laborer	w hf 6, 7	M F	2
687		Gillespie James, laborer	e hf 7, 9	M F	5
692		Johnston Adam, laborer	e hf 7, 9	M F	5
515		Kerr David, laborer	e hf 5, 7	M F	2
680		Lewis Geo, laborer	5, 9	M F	5
699		Montgomery Wm, laborer	e hf w hf 10, 9	H M, F	5
539		McRobbie George, laborer	w hf 9, 7	M F	2
682		Wilson Chas W, teacher	5, 9	M F	5

P. O. Add'ns
5
5
5
2
2
2
2
2

Polling Sub-Division No. 9.

SCHEDULE OF POST OFFICES.—2, Bridgen ; 3, Courtright ; 15, Waubuno ; 6, Kimball.

POLLING SUB-DIVISION NO. 9.—Comprising lots 7 to 20, both inclusive, in the 1st, 2nd and 3rd Concessions ; Lots 10, 11 and 12, in 4th Concession. Polling in Waubuno School House.

PART 1—List of persons entitled to vote at both Municipal Elections and Elections to the Legislative Assembly.

Poll-
5
10
2
2
2
relative
F 2
F 2
F 5
F 2
F 5
F 5
F 2
F 5

No ON ROLL	Juror	NAME AND OCCUPATION.	LOT, CONCESSION OR STREET	Owner, Tenant, F.S, M.F	P. O. Add'ns
168	J	Brown Daniel W, farmer	s 3-4 7, 3	M F, O	3
120	J	Burr Joseph, farmer	s hf w hf 18, 2	M F, O	6
181	J	Burr Thomas, farmer	e hf 11, 3	M F, O	15
201	J	Burns Arthur, farmer	s qr 18, 3	M F, O	15
44	J	Clintie Robert, farmer	n pt 12, 1	M F, O	1
96	J	Campbell James, farmer	e hf 9, 2	M F, O	15
135	J	Chowen Thomas, farmer	w hf e hf 20, 2	M F, O	3
129	J	Conners Daniel, farmer	e qr 20, 2	M F, O	3
185	J	Capes Charles, farmer	centre 12, 2	M F, O	3
202	J	Duncan Peter, farmer	s pt 19, 3	M F, O	6
203	J	Duncan James, farmer	s pt 19, 3	M F, T	6
40		Farr James, farmer	s pt w hf 10, 1	M F, F S	15
300		Farr William, farmer	pt 10 and s w 3 4 14, 1	M F, Jt O	15
53		Farr Phillip, farmer	s w 3-4 14, 1	M F, Jt O	15
54		Farr Joseph, farmer	s w 3-4 14, 1	M F, Jt O	15
52		Farr John, farmer	s w 3-4 14, 1	M F, F S	15
49	J	Gorton Andrew, farmer	s e qr 13, 1	M F, T	15
191	J	Gray George, farmer	14, 3	M F, O	15
196	J	Gray David M, farmer	n qr 16, 3	M F, O	15
195	J	Gray Alexander, farmer	s 3-4 16, 3	M F, O	1
45		Hatton William, farmer	n w cor 12, 1	M F, T	15
50		Hayward Joseph, farmer	n hf and s w qr 13, 1	M F, Jt O	15
59	J	Hayward William, farmer	s e qr 16, 1	M F, O	15
47		Hayward Thomas, farmer	n hf 13, 1	M F, F S	15
110	J	Hunter John, farmer	n w qr 13, 2	M F, T	15
91	J	Huff Samuel, farmer	w hf s hf 7, 2	M F, O	15
103		Hurst John, farmer	n w qr 11, 2	M F, O	15
179	J	Hayward Allen, farmer	n e pt 9 and 10, 3	M F, O	15
182	J	Hurst Wm H, farmer	w hf 11, 3	M F, O	15
24	J	Hutchinson Joseph, farmer	w hf 19, 3	M F, O	15
51		Hayward Charles, farmer	s e qr 16, 1	M F, O	15
113	J	Jeffrey William, farmer	w hf 15, 2	M F, O	15
112	J	Jeffrey John, farmer	w hf 17, 2	M F, F S	15
118	J	Jeffrey William, farmer	e h 17, 2	M F, O	15
169	J	Kent Edward, farmer	s 3-4 w hf 7, 3	M F, O	2

No. ON ROLL	Juror.	NAME AND OCCUPATION.	LOT, CONCESSION OR STREET	Owner, Tenanc, F.S., M.F.	P. O. Address
121	J	Little Thomas, farmer	s hf 18, 2	M F, O	15
122	J	Little Win J, farmer	s hf 18, 2	M F, F S	15
123	J	Little Henry O, farmer	s hf 18, 2	M F, F S	15
178	J	Lester Charles, farmer	n e qr 9, 3	M F, O	2
177	J	Lester George, farmer	n e cor 9, 3	M F, O	2
264	J	Lester John, farmer	s qr 10, 4	M F, O	2
265	J	Lester Allan, farmer	cen 11, 4	M F, O	2
266	J	Lester Abraham, farmer	s qr 11, 4	M F, O	2
267	J	Lester Thomas, farmer	n w pt 11, 4	M F, O	2
46		McCatty John, farmer	n e qr 11, 1	M F, O	15
42		Miller John T, farmer	e hf 11, 1	M F, F S	15
36	J	Mason James, farmer	n qr 9, 1	M F, O	15
41	J	Miller James, farmer	e hf 11, 1	M F, O	15
194	J	McHaney William, farmer	w hf 15, 3	M F, O	15
60	J	McHardy William, farmer	e hf 18, 1	M F, O	15
105	J	Moffat m, farmer	w hf 12, 2	M F, O	15
104	J	Moffat Robert, farmer	e hf 12, 2	M F, O	15
107	J	Moore William, farmer	e 3-4 13, 2	M F, T	15
115	J	McBean Wm, farmer	n w qr 16, 2	M F, O	15
171	J	Magill James, farmer	s e qr 8, 3	M F, O	2
172	J	Magill William, farmer	s w qr 8, 3	M F, O	2
37		Mason William, farmer	n qr 9, 1	M F, Jt O	15
38		Mason Robert, farmer	n qr 9, 1	M F, Jt O	15
205		McMaster James, farmer	e hf 20, 3	M F, O	3
116		McBean Arthur, farmer	n e hf 16, 2	M F, O	15
111	J	Nicol George, farmer	e hf 15, 2	M F, O	15
186		Overton John G, farmer	w qr 12, 3	M F, O	15
187		Overton Mirza G, farmer	w qr 12, 3	M F, Jt O	15
93	J	Quigley Wm, farmer	n e qr 7, 2	M F, O	2
94		Quigley James, farmer	n e qr 7, 2	M F, Jt O	2
276	J	Ramsey David, farmer	e qr 15 3	M F, O, Bradshaw	
174	J	Rutherford, Wm, farmer	n hf 8, 3	M F, O	2
48	J	Shaw Joel, farmer	s pt 12, 1	M F, O	15
55	J	Scott Thomas, farmer	n hf 15, 1	M F, O	15
53	J	Scott William, farmer	s hf 15, 1	M F, O	15
102	J	Scott Alexander, farmer	n e qr 11, 2	M F, O	15
56		Scott Peter, farmer	n hf 15, 1	M F, F S	15
170	J	Scott Thomas, farmer	n qr 7, 3	M F, O, Petrolea	
189	J	Scott Andrew, farmer	e hf w hf 13, 3	M F, O	15
190	J	Scott Gilbert, farmer	w qr 13, 3	M F, O	15
57		Scott Noble, farmer	n hf 16, 1	M F, F S	15
183		Sykes John, farmer	e qr 12, 3	M F, O	15
199	J	Taylor James, farmer	e 3-4 17, 3	M F, Jt O	15
43	J	Tennyson Daniel, farmer	w hf 11, 1	M F, O	15
95	J	Tucker Wm S, farmer	8, 2	M F, O	2
119	J	Thompson John, farmer	w hf 17, 2	M F, O	2
173	J	Turner David, farmer	n hf 8, 2	M F, T	2

TOWNSHIP OF MOORE.

Number of Voters and Jurors in Sub-Division	No	Voters	Jurors
1	150	101
"	"	153	97
"	"	211	101
"	"	242	112
"	"	126	108
"	"	187	150
"	"	266	178
"	"	154	95
"	"	117	75
Totals		1606	1017

I, James Watson, Clerk of the Municipality of the Township of Moore, in the County of Lambton, do hereby certify that parts one and three of the within list constitute a correct list for the year 1897, of all persons appearing by the last revised Assessment Roll of the said Municipality to be entitled to vote at Elections for members of the Legislative Assembly; and that parts one and two constitute a correct list for said year of all persons appearing by the said Roll to be entitled to vote at Municipal Elections in said Municipality; and I hereby call upon all electors to examine the said list, and if any omissions or other errors are perceived therein to take immediate proceedings to have said errors corrected according to law

I also certify that a copy of the above list was first posted up in my office on the 10th day of Sept 1897.

Dated this 10th day of Sept 1897.

JAMES WATSON,
Clerk of the Township of Moore,
Brigden, P. O.

