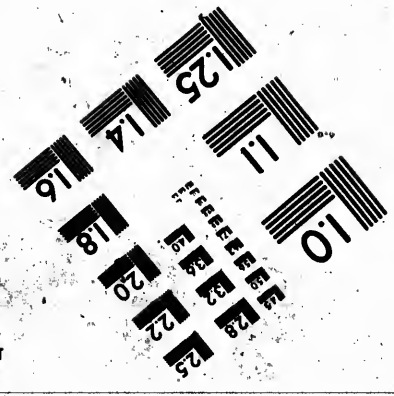
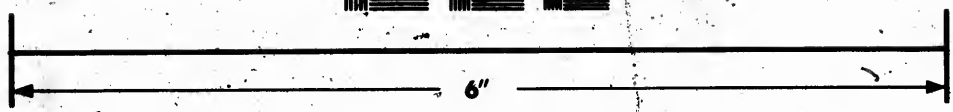
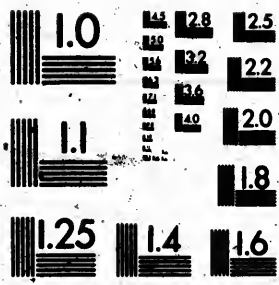


**IMAGE EVALUATION  
TEST TARGET (MT-3)**



**Photographic  
Sciences  
Corporation**

23 WEST MAIN STREET  
WEBSTER, N.Y. 14580  
(716) 872-4503

118  
120  
122  
125

**CIHM  
Microfiche  
Series  
(Monographs)**

**ICMH  
Collection de  
microfiches  
(monographies)**



Canadian Institute for Historical Microreproductions / Institut canadien de microreproductions historiques

118  
120  
122  
125

**© 1993**

Technical and Bibliographic Notes / Notes techniques et bibliographiques

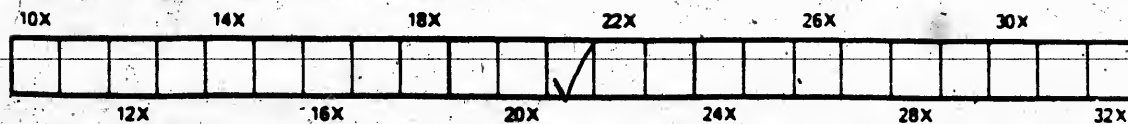
The Institute has attempted to obtain the best original copy available for filming. Features of this copy which may be bibliographically unique, which may alter any of the images in the reproduction, or which may significantly change the usual method of filming, are checked below.

L'Institut a microfilmé le meilleur exemplaire qu'il lui a été possible de se procurer. Les détails de cet exemplaire qui sont peut-être uniques du point de vue bibliographique, qui peuvent modifier une image reproduite, ou qui peuvent exiger une modification dans la méthode normale de filmage sont indiqués ci-dessous.

- Coloured covers/  
Couverture de couleur
- Covers damaged/  
Couverture endommagée
- Covers restored and/or laminated/  
Couverture restaurée et/ou pelliculée
- Cover title missing/  
Le titre de couverture manque
- Coloured maps/  
Cartes géographiques en couleur
- Coloured ink (i.e. other than blue or black)/  
Encre de couleur (i.e. autre que bleue ou noire)
- Coloured plates and/or illustrations/  
Planches et/ou illustrations en couleur
- Bound with other material/  
Relié avec d'autres documents
- Tight binding may cause shadows or distortion  
along interior margin/  
La reliure serrée peut causer de l'ombre ou de la  
distorsion le long de la marge intérieure
- Blank leaves added during restoration may appear  
within the text. Whenever possible, these have  
been omitted from filming/  
Il se peut que certaines pages blanches ajoutées  
lors d'une restauration apparaissent dans le texte,  
mais, lorsque cela était possible, ces pages n'ont  
pas été filmées.
- Additional comments: /  
Commentaires supplémentaires:

- Coloured pages/  
Pages de couleur
  - Pages damaged/  
Pages endommagées
  - Pages restored and/or laminated/  
Pages restaurées et/ou pelliculées
  - Pages discoloured, stained or foxed/  
Pages décolorées, tachetées ou piquées
  - Pages detached/  
Pages détachées
  - Showthrough/  
Transparence
  - Quality of print varies/  
Qualité inégale de l'impression
  - Continuous pagination/  
Pagination continue
  - Includes index(es)/  
Comprend un (des) index
- Title on header taken from: /  
Le titre de l'en-tête provient:
- Title page of issue/  
Page de titre de la livraison
  - Caption of issue/  
Titre de départ de la livraison
  - Masthead/  
Générique (périodiques) de la livraison

This item is filmed at the reduction ratio checked below/  
Ce document est filmé au taux de réduction indiqué ci-dessous.



The copy filmed here has been reproduced thanks to the generosity of:

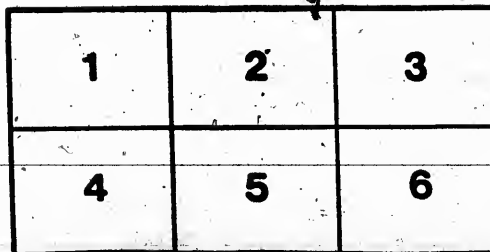
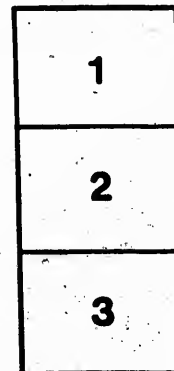
Metropolitan Toronto Reference Library  
Arts Department

The images appearing here are the best quality possible considering the condition and legibility of the original copy and in keeping with the filming contract specifications.

Original copies in printed paper covers are filmed beginning with the front cover and ending on the last page with a printed or illustrated impression, or the back cover when appropriate. All other original copies are filmed beginning on the first page with a printed or illustrated impression, and ending on the last page with a printed or illustrated impression.

The last recorded frame on each microfiche shall contain the symbol  $\rightarrow$  (meaning "CONTINUED"), or the symbol  $\nabla$  (meaning "END"), whichever applies.

Maps, plates, charts, etc., may be filmed at different reduction ratios. Those too large to be entirely included in one exposure are filmed beginning in the upper left hand corner, left to right and top to bottom, as many frames as required. The following diagrams illustrate the method:



L'exemplaire filmé fut reproduit grâce à la générosité de:

Metropolitan Toronto Reference Library  
Arts Department

Les images suivantes ont été reproduites avec le plus grand soin, compte tenu de la condition et de la netteté de l'exemplaire filmé, et en conformité avec les conditions du contrat de filmage.

Les exemplaires originaux dont la couverture en papier est imprimée sont filmés en commençant par le premier plat et en terminant soit par la dernière page qui comporte une empreinte d'impression ou d'illustration, soit par le second plat, selon le cas. Tous les autres exemplaires originaux sont filmés en commençant par la première page qui comporte une empreinte d'impression ou d'illustration et en terminant par la dernière page qui comporte une telle empreinte.

Un des symboles suivants apparaîtra sur la dernière image de chaque microfiche, selon le cas: le symbole  $\rightarrow$  signifie "A SUIVRE", le symbole  $\nabla$  signifie "FIN".

Les cartes, planches, tableaux, etc., peuvent être filmés à des taux de réduction différents. Lorsque le document est trop grand pour être reproduit en un seul cliché, il est filmé à partir de l'angle supérieur gauche, de gauche à droite, et de haut en bas, en prenant le nombre d'images nécessaire. Les diagrammes suivants illustrent la méthode.



Gaverhill, Learmont & Co  
MONTREAL

CATALOGUE OF

SEASONABLE GOODS

SPRING 1897



**I**n presenting our Spring Goods Catalogue to the trade we would call your attention to the fact that we are now carrying the largest and most complete stock in Canada of Cutlery, Guns, Ammunition, Sporting Goods, Bicycles, Sundries, Mechanics' Tools, Builders' Hardware, House Furnishing Goods, Seasonable Goods, Harness Goods, Farm Tools, Nails, Iron, Metals, Glass, Etc., Etc.

All orders sent to us will be filled promptly and carefully at the lowest market prices.

**CAVERHILL, LEARMONT & Co.,**

**WHOLESALE SHELF AND HEAVY  
HARDWARE MERCHANTS.**

**... MONTREAL.**



# Best American Green and Black Wove Wire.



**T**HE HOMER BRAND of Wire Screen Cloth is justly entitled to the enviable reputation it has attained of being the Best, Hard Steel, Double Selvage Wire Cloth made. It is standard in gauge and mesh. In placing it before the trade we feel confident it will give perfect satisfaction to the consumer.



We carry the largest and best assorted stock of this line in the Dominion; the demand being very great at this season of the year we would advise our customers sending in their orders as early as possible to secure prompt shipment.

The following sizes in stock, all in 100 feet lengths:—

18	20	22	24	26	28	30	32	34	36	42 inches wide.
150	166 $\frac{2}{3}$	183 $\frac{1}{3}$	200	216 $\frac{2}{3}$	233 $\frac{1}{3}$	250	266 $\frac{2}{3}$	283 $\frac{1}{3}$	300	350 sq. feet in roll.

PRICES ON APPLICATION.

## The Canadian Wire Screen Cloth Holder . . .

No. 1. To hold 8 rolls, . . . Each, \$7.35    No. 2. To hold 4 rolls, . . . Each \$5.00

These Holders are strongly and substantially made, to hold 50 or 100 feet of painted screen cloth, 18 to 36 inches wide. They answer equally well for Hardware or Panning Mill grade webs.

DISCOUNTS ON APPLICATION.



# Owosso Hardwood Adjustable Window Screens.

SIZES IN STOCK. {	No. 13—24 Inches High.	Adjusts 25 1/2 to 31 1/2 Inches.
	" 14—24 " "	" 29 1/2 to 35 1/2 "
	" 15—24 " "	" 33 1/2 to 39 1/2 "



HARDWOOD  
OILED  
WITH  
SPRINGS.



WIRE CLOTH  
PUT ON  
WITH A  
GROOVE AND  
WEDGE.



**T**HE OWOSSO HARDWOOD ADJUSTABLE WINDOW SCREEN has become a LEADER over all other screens, and is conceded by all to be the best; it being the most perfect screen in the market.

The adjustment is simple, perfect and reliable. The wings are operated by coil springs and are made adjustable by means of steel rods screwed into them which also prevents them from warping or splitting.

The frames are made of hardwood finished natural color, oiled.

The wire cloth used is the best in the market. It is fastened to the frame by pressing into a groove, into which a wedge is driven, avoiding the use of tacks.

PRICES ON APPLICATION.

## OWOSSO FLUSH PATTERN SCREEN DOORS.

### FOUR PANEL.

Both sides alike, Wire put on with a Groove and Wedge.



#### Sizes in Stock.

No. 92

2 ft. 8 in. x 6 ft. 8 in.

No. 96

2 ft. 10 in. x 6 ft. 10 in.

No. 100

3 feet x 7 feet.



They are finished in walnut stain, with dark colored mouldings. Green painted wire cloth, the best in the market, is fastened to the frame by pressing into a groove and made secure with a wedge, avoiding the use of tacks.

Cloth put on in this manner cannot sag or stretch.



THE OWOSSO FLUSH PATTERN SCREEN DOOR is made from kiln-dried pine, with stiles either 3 or 4 inches wide,  $\frac{7}{8}$  inch thick, 4 panels, bottom rail 7 inches wide, flush mouldings put together with eighteen corrugated, hardwood dowels and glued joints. The dowels do not cut away the stiles nearly so much as a mortise, thereby making it much stronger than a mortised door, in fact it makes a pine door with hardwood joints.

PRICES ON APPLICATION.

# OWOSSO FANCY PATTERN SCREEN DOORS.

WITH FLUSH MOULDING.

Cherry Color Varnished, Fancy Moulding.

1 1/4 INCH WOOD.



**Sizes in Stock.**

No. 192

2 ft. 8 in. x 6 ft. 8 in.

No. 198

2 ft. 10 in. x 6 ft. 10 in.

No. 200

3 feet x 7 feet.

They are unexcelled for style and durability. All doors are finished in imitation of cherry, with two coats of varnish. Only the best green wire cloth is used; which is stretched and securely fastened to the frame with a groove and wedge.

THE OWOSSO FANCY PATTERN SCREEN DOOR is made with flush mouldings, from pine or hardwood lumber thoroughly kiln dried, put together with heavy maple dowels, set in glue, 1 1/8 inches thick, made with stiles and rails 3 inches wide, bottom rail 7 inches wide.

PRICES ON APPLICATION.



# Owosso Fancy Pattern

## Screen Doors . . . .

OAK FINISH, FANCY MOULDING.



**Sizes in Stock.**

**No. 292**

2 ft. 8 in. x 6 ft. 8 in.

**No. 298**

2 ft. 10 in. x 6 ft. 10 in.

**No. 300**

3 feet x 7 feet.

This door is made of choice stock, and equally well as our fancy patterns.

**BOTH**

**SIDES**

**ALIKE**

PRICES ON APPLICATION.



## Screen Door Spring Hinges.

COLUMBIA No. 14.

NOT HOLD BACK.



FULL SIZE CUT. 3 x 3.

Cast Iron, Japanned.

**T**HESE Hinges are not adjustable but are packed flat, with the tenison of the springs adjusted, ready for use. They have no loose parts.

One Dozen Pairs in a Box.

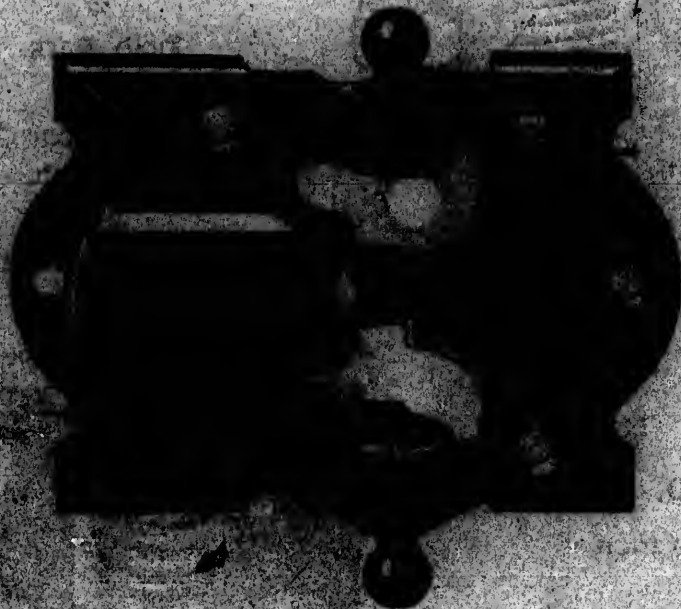
PRICES ON APPLICATION.

CAVENDISH, LEARMOST & CO.

# Screen Door Spring Hinges.

KNOXALL No. 15.

HOLD BACK.



FULL SIZE CUT  $\frac{1}{4}$  x  $\frac{3}{8}$

Cast Iron, Japanned.

The hinges are of fine Steel Wire, carefully tempered, permitting an easy and firm operation of the flanges. They will close a door or allow it to remain open.

One Dozen Pairs in a Box.

PRICES ON APPLICATION.

**Spring Lever Spring Hinges.**

**CONQUEROR**

No. 2.

Japanned Steel, Indestructible.

**Hold Back.**

**Will Hold Doors Open  
or Closed.**

**ONE DOOR TAINT IN A BOX.**

**No. 100**

A Door

**Single or Double One Way**

**Japanese and European  
Style Spring.**

**ONE DOOR TAINT IN A BOX.**



# Screen Door Spring Hinges

## SAMSON No. 5.

Royal Patent Finish  
Hold-Down Pattern.

PLACE logs or markers over the underside of one of the leaves, and hammer gently to force while shown in position.

This piece is used on end of projecting spring and holds spring coil from slipping off.

It is three times as strong as only two leaves and one spring. Both castings and spring cases heavy and strong. Attractive in pattern and finish.

SIZE, 3 x 2 1/2 INCHES.



WILLIAM  
No. 50.  
Warranted Action  
SAVINGHAM, LAMONT & CO.  
LONDON  
NEW YORK

# SCREEN DOOR CATCHES.



Full Size Cut of No. T5461 A.

Full Size Cut.

Lever Handle for Outside.

## No. T5461 A.

Fuscan Bronzed with Screws.

Diamond Patent Anti-Friction Bolt.

Lever Handles, Bent Strike, Reverse Bevel.

Suitable for Doors  $\frac{7}{8}$  to  $1\frac{1}{4}$  inch thick.

## PETERBORO

No. 1102.

Berlin Bronze, Knob Handle.

For Doors  $\frac{7}{8}$  to  $1\frac{1}{4}$  inch. Reverse Bevel with Stop.

ONE DOZEN PAIRS IN A BOX.

PRICES ON APPLICATION.



CAVERHILL, LEARMONT & CO.

# LEADER CHURN.



The Best Barrel Churn in the Market.

Patent Gas Escape and New Flexible Handle, with Locking Attachment.



## Price List of the "Leader Barrel Churn."

No. 0.—Five Gallon Churn.....	\$ 8 00
No. 1.—Nine Gallon Churn, churns from 1 to 4 gallons.....	8 50
No. 2.—Fifteen Gallon Churn, churns from 1 to 7 gallons.....	9 00
No. 3.—Twenty Gallon Churn, churns from 1 to 9 gallons.....	10 00
No. 4.—Twenty-five Gallon Churn, churns from 1 to 12 gallons.....	12 00
No. 5.—Thirty-five Gallon Churn, churns from 1 to 16 gallons.....	16 00

DISCOUNTS ON APPLICATION.

# LAWN MOWERS.



## "Eclipse" Improved Lawn Mower.

Noiseless Encased Gearing.  
 Light, Durable, Efficient.  
 Cast Steel Knives,  
 Four Blade Cylinder,  
 7 1/2 Inch Drive Wheels.

12 INCH.

14 INCH.

16 INCH.

18 INCH.

## THE BEST LAWN MOWER in the World.

### HIGH WHEEL. IMPROVED 1897.

NOISELESS  
 ENCASED  
 GEARING.

THE  
 LIGHTEST  
 RUNNING  
 MOWER  
 MADE.



CAST  
 STEEL  
 KNIVES.

FOUR  
 BLADE  
 CYLINDERS.

10 1/2 INCH  
 DRIVE  
 WHEELS.

12 INCH.

14 INCH.

16 INCH.

18 INCH.

20 INCH.

PRICE ON APPLICATION.



# Lawn Sprinklers.

**Jewel**  
Half and Full Circle,  
**Active**  
Full Circle Only.



**Detroit.**  
Half and Full.  
**Detroit No. 2.**  
PATENT APPLIED FOR  
Full Circle.

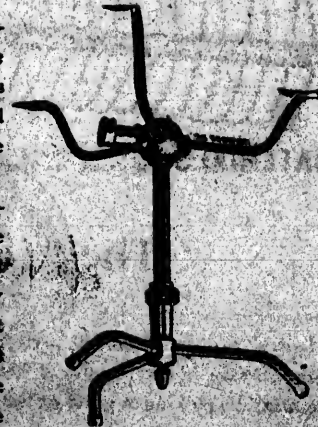


## Genuine "CALIFORNIA" Lawn Sprinkler.

**N**O other Lawn Sprinkler has ever met with the degree of success attained by the "California" since its introduction five years ago. Its reputation has been made solely on its merits as the simplest, most efficient and durable device for the artificial watering of Lawns. It comes nearest to being a perfect substitute for the "gentle summer rain" of any sprinkler on the market.

Its advantages can readily be seen by its construction. The bearings are made of the best Rabbit Metal and Phosphor Bronze, these being anti-friction metals, the Sprinkler will run with very light pressure, and will water a space from 20 to 60 feet diameter evenly according to the pressure applied. The revolving tips are not made of cast metal, nor work up in dirt, but from solid brass rod. Each hole is drilled at such angle as to evenly distribute the water over the space to be sprinkled. At the same time a large quantity of water is atomized or vaporized, which the atmosphere retains and deposits in the form of heavy dew over a much larger area.

The sprinkler is so constructed that it may be pulled by the rubber hose from one part of the lawn to another without wetting the feet. It is handsomely finished, every working part being made resistant to wear, and is warranted in every particular.



**PRICES ON APPLICATION.**

# Lawn Rakes

## "HUSTLER" Lawn Rake. (PATENTED)

REVERSIBLE.

ALL STEEL. Is Practically Indestructible. HEAVILY TINNED.

BEST THAT IS MADE.

Two Sizes.

No. 0—17½ inch Head, 20 Teeth.

No. 1—21 " " " 24 "

ONE THAT SELLS.

Head is of No. 16. Fine Cold Rolled Steel bent in the stiffest form, in which the teeth are securely held. Socket is firmly secured without rivets or weld, guaranteed to be secure. Handles of Ash, finely polished. This Rake runs smooth; its teeth will not tear the sod nor clog with grass or leaves.



## "MODEL" Lawn Rake, NEW, NEAT AND DURABLE, YOU WILL FIND IT

REVERSIBLE

A Good Seller

Attractively  
Finished and  
Surprisingly  
Low in Price.



**MATERIALS:** Handle and Handle of Selected White Ash. Teeth of Special Soft Coppered Steel Wire No. 6. Socket of Mottled Iron Designed for Strength. 42" One Size, 20 inch Head and 24 Teeth.

## The "GIBBS" Lawn Rake

Lawns can be cleaned perfectly with this rake in less time and labor, requiring no picking of grass or leaves from the teeth, and not tear the sod when taking.



To Unload Rake.—Simply push backward without raising it. One motion clears all the sod perfectly.

PRICES ON APPLICATION.



# The Myers Bucket Spray Pump and Fire Extinguisher.

WITH AGITATOR.

**T**HIS Spray Pump is constructed entirely of brass, a material that is not affected by the poisonous sprays used in different formulas for spraying fruit trees, vines and shrubbery.

It is provided with a large air chamber, and has a ball valve at the bottom between the cylinder and the air chamber, whereby the pressure is held uniformly in the air chamber and on the hose, so that the nozzle throws a continuous spray, and is not affected by the movement of the plunger. The operator is enabled to keep a constant pressure on nozzle of from 50 to 100 lbs. with very ordinary exertion. It will throw a solid stream 50 feet and is of unusual value for washing windows, buggies, and extinguishing fires, sprinkling lawns, flowers, etc. For spraying it is arranged so as to discharge a fine jet in the bottom of the bucket and keep the solution thoroughly mixed and agitated, a feature peculiar to this pump only and a very necessary feature to a spray pump. The pump is also provided with a sprinkler for flowers.



## "NUMYR" Hose Nozzle.

Will throw a perfect solid stream and also a perfect spray through the same tube.

No. 3 has 3-16 inch hole and is threaded for 1/2 or 3/4 inch hose.

SPECIALLY ADAPTED FOR CITY USE.



## "GEM" Hose Nozzle

Throws a spray or solid stream.

Threaded for 1/2 or 3/4 inch hose.

## Plain Hose Nozzle

Solid Stream only. Threaded for 1/2 or 3/4 inch hose.



## GARDEN SYRINGES

MAVITY'S ZINC-BARREL BRASS NOZZLE.

SOLID BRASS

101.—18 inches,	2 nozzles.	6684.—18 inches,	3 nozzles.
2223.—14 x 1 1/4 inches,	3 nozzles.	2225.—16 x 1 1/2 inches,	3 nozzles.
2229.—18 x 1 1/4 inches,		3 nozzles.	

PRICES ON APPLICATION.

# The Gem Freezer

*The Best in the World.*



Is the simplest, neatest, most convenient and satisfactory for family use. Pails of Best Virginia White Cedar, Gearing completely covered, Double-Action with self-adjusting Scraper. Having Electric Welded Wire Hoops, guaranteed not to drop off, Cans made of Heavy Tin-plate with Drawn Steel Bottom, requires the smallest possible quantity of Ice.

PHONE OR APPLICATION.



# The Crown Freezer.

DOUBLE-ACTION



**SIZES.**

Quarts .....	12	24	36
With Fly-Wheel .....			
" Crank .....			

**S**IMILAR in design and construction to our Gem Freezer, but made heavier and stronger, for use of Confectioners, Hotels and Restaurants, etc.

**PRICES ON APPLICATION.**

**CROWN ICE CHIPPER**

**T**HE only simple, effective and cheap tool for chipping ice for use in freezers, in place of the old-time bag and hatchet. Reduces ice quickly to small uniform pieces, size of peanuts. Makes it possible to freeze ice cream more rapidly and uniformly. Saves waste of ice, time, temper. A 50 lb. block of ice can be reduced to small pieces with this chipper in less than five minutes. It can also be used to great advantage to chip ice for soda fountains, bar rooms and restaurants.

**GEM ICE SHAVE**

**I**S a simple and handy tool for shaving and collecting ice from blocks without removing the latter from the refrigerator or ice chest. It is constructed like an ordinary plane, made of galvanized cast iron, with a knife adjustable for shaving fine or coarse. In front of the knife is a receptacle about the size of a tumbler, closed by a lid, in which the shaved ice collects. When filled, the lid is raised and contents emptied. Shaved ice is desirable for a great variety of purposes, such as

For cooling Cantaloupes, Melons and other fruits.

For use in sick rooms—dissolving quickly in the mouth.

Making ice poultices; being fine, it perfectly fits the parts to which applied.

For cooling oysters on half shell.

For cooling water, wines or other liquids.

For making lemonade or iced drinks of any kind.

For use at soda fountains, bar rooms and restaurants.

**SEND FOR APPLICATION.**

# ICE SHREDDERS.

FOR  
SHAVING  
ICE



COARSE  
OR  
FINE

No. 23—Tinned ..... \$2.50 per Dozen

## “Enterprise” Ice Shredder.

FOR  
SHAVING  
ICE



COARSE  
OR  
FINE

THE operation of our Shredder requires no explanation, being simply to draw the Blade upon a piece of Ice—the pressure applied producing fine or coarse pieces, as desired. To remove the finely cut ice from the Cup, grasp the Shredder firmly in the right hand and strike it, inverted, upon the left, at the same time being careful to keep the Lid closed. Then scrape the ice into some convenient receptacle. It is not necessary to take the ice out of the refrigerator, as you may reach in and fill the Cup from the side, end or top of a cake of ice without disturbing anything or wetting your hands. Its use will be appreciated for Fruits, Drinks, Oysters and Clams on the half shell, Olives, Celery, Radishes, Iced Tea, Sliced Tomatoes, etc., and for many purposes in the Sick Room.

No. 33—Tinned ..... \$7.20 per Dozen

DISCOUNTS ON APPLICATION.



CAVERHILL, LEARMONT & CO.

# Enterprise Raisin Seeder.



TINNED.



.. **W**ET the Raisins and it will remove  
Every Seed without waste.

It is simple, easily adjusted, does its work rapidly and effectually, seeding raisins, wet or dry. By the use of our family size seeder, a pound can be seeded in less than five minutes, and with the hotel size still more rapidly.

## PRICES.

No. 36—Family Size.....	Per Dozen	\$10 00
No. 38—Hotels, Bakeries, &c.....	" "	30 00

DISCOUNTS ON APPLICATION.

## Enterprise Cherry Stoner.

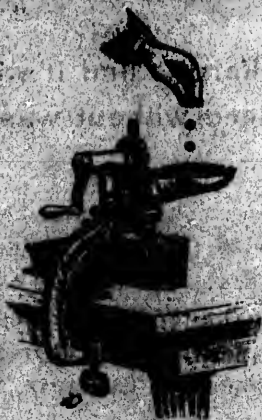


THE above cut illustrates our Cherry Stoner, which we recommend particularly to those desiring rapid work. It can be adjusted by Thumb Screw to adapt it to the different sizes of cherry stones.

- No. 1—Japanese..... \$7 50 per Dozen
- No. 2—Tinned..... 9 00 " "

## New Cherry Stoner.

TINNED.



No. 12

THE Cherry Stoner illustrated above is intended to stone cherries with the least possible cutting or disfiguring. Every good housewife will appreciate this for preserving purposes.

The most satisfactory results, as is generally the case with stoners operating on the plunger principle, are obtained by dropping the cherries One at a Time into the hopper.

..... \$12 00 per Dozen



**ENTERPRISE**

COMBINATION

**Fruit, Wine and Jelly Press**



TINNED.



No. 34.

Price..... \$ 3 00

Capacity of Hopper, 1 qt. Length, 12 in. Height 12 in. Weight, 13 lbs.

**T**HE illustration represents our Combination Fruit Press in operation. We confidently guarantee it superior to all others in the market. Its principle is very simple, it is easily operated, saves all the re-handling necessary with other presses, as it extracts the juice and ejects, the skins and seeds in one operation. It can be used for many purpose, such as making Wines, Jellies and Fruit Butters from Grapes, Strawberries, Raspberries, Blackberries, Huckleberries, Goose berries, Elderberries, Cranberries, Currants, Tomatoes, Quinces, Pine-apples, etc.

The dryness of pulp or refuse can be regulated by means of Thumb Screw at the outlet.

It is advisable in pressing some varieties of grapes to also put in the stems.

Not intended for Making Cider.

**No 21. Meat Juice Extractor.**

Price..... \$ 3 00

CAVERHILL, LEARMONT & CO.

We are Canadian Representatives for  
THE FAMOUS.....

## ...Cavalier Bicycles...

Two-Piece Crank and Hubs Device and all  
'97 Improvements.

## The... Pelham Bicycle

The Great Commercial Wheel.

Search Light and Midnight Sun Lamps,  
Standard Cyclometers and Tachometers.

AND ARE HEADQUARTERS FOR

Christy, Messinger and Hunt's Saddles. New Departure and Stirling Bells.

Eclipse Cements, Oils, Graphite, etc.

3 in 1, R. R. and Pace-Maker Compounds, Mossberg Wrenches, Toe Clips,

Plymouth Handle-Bars, Stands, etc.

(Sykl & Tornado Foot Pumps, M. & W. Lamps.)

CAVERHILL, LEARMONT & CO.,

Illustrations mailed on application.

MONTREAL, QUEBEC.



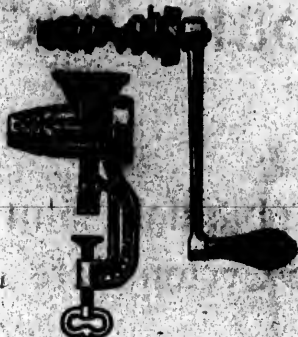
# Enterprise New Meat Chopper

TINNED

... Family Sizes ...

Leaves no Meat in  
the Machine  
and is  
Easily Cleaned

Standard Size of Boles  
3-40 Inch



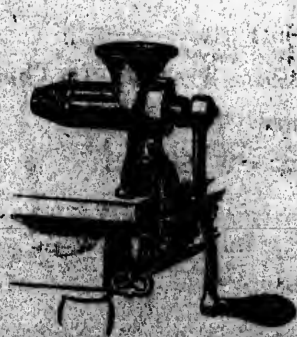
Practically  
in Two Pieces  
Can be taken apart  
in a second

Will furnish 1-4 or 5-10 Inch  
when desired

SHOWING MACHINE TAKEN APART.  
No Small Parts to Loos or Mislay

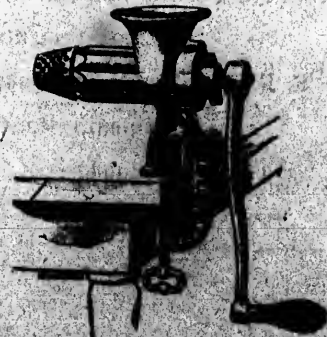
No. 2, . . . Price \$1.75

Chops 1 lb. per minute.  
Weights 4 1/2 lbs.



No. 4, Price \$2.25

Chops 2 1/2 lbs. per minute.  
Weights 6 1/2 lbs.



No. 6, Price \$2.75

Chops 3 lbs. per minute.  
Weights 8 1/2 lbs.

PACKED 6 IN A CASE

# Enterprise Meat Choppers

AS SHOWN IN

**Small Family Size, No. 5. Price \$2.00**

Chops exactly as shown. Weight, 4½ lbs.  
Chops one pound per minute.

Packed 6 in a case.



**Large Family Size, No. 10.  
Price, \$3.00**

Weight, 8 lbs. Chops two pounds per minute.

Packed 6 in a case.

Chops exactly as shown.

**Butcher's Size, No. 20.**

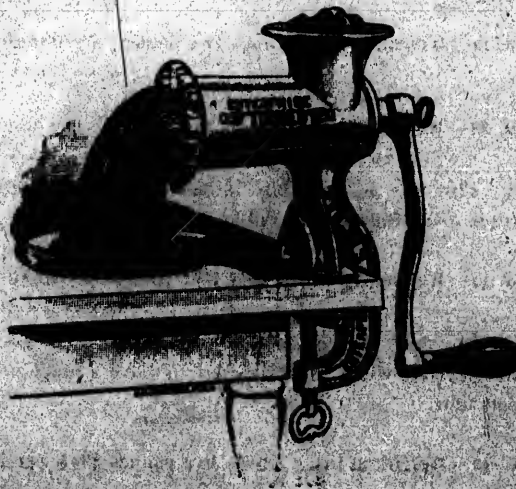
**Price \$3.00.**

Weight, 16½ pounds.

Chops three pounds per minute.

Packed 6 in a case.

Standard plate only with each Chopper unless otherwise ordered.



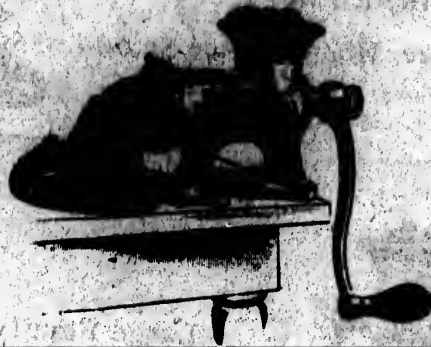
## Size of Holes in Plates:

3-16 inch, Standard.    ¼ inch.    5-16 inch.    ¾ inch.



# Enterprise Meat Choppers

...TINNED...



Chops exactly as shown.

Standard Plate only with each Chopper unless otherwise ordered.

## SIZE OF HOLES IN PLATES.

3-16 inch.

1-4 inch.

5-16 inch.

3-8 inch.

	PRICE
No. 12—Weight, 7 lbs. Chops two pounds per minute, <small>Packed 6 in a case.</small>	\$2.80

No. 22—Weight, 12 lbs. Chops three pounds per minute, <small>Packed 6 in a case.</small>	\$4.00
---	--------

This size is especially intended for Butchers, Market-men, Farmers, Poultry Breeders, Hotels, Restaurants and Public Institutions.

No. 32—Weight 18 lbs. Chops four pounds per minute, <small>Packed 6 in a case.</small>	\$6.00
---	--------

No. 32 is adapted to Butchers' use, also for the larger Hotels, Restaurants, Public Institutions, etc., where it is desired to have a machine capable of chopping large quantities in a short time.

No. 42—Weight 39 lbs. Chops five pounds Pork per minute, <small>Packed 3 in a case.</small>	\$18.00
--	---------

No. 42 is a very efficient machine, but requires so much strength to operate it that we recommend it for Pork only, which chops much easier than Beef.



ENTERPRISE

Sausage Stuffer and Lard Press

Screw Movement.



**DIRECTIONS**

FOR stuffing sausages, the Tin Strainer and Bottom Plate are to be removed. There are two Plunger-Plates with each machine—the large one for stuffing and the small one for pressing. They can be easily exchanged by screwing them on or off. For pressing Fruit or Lard, the perforated Cylinder and Bottom (as shown in cut) are to be placed in Press.

When in operation, the pressure applied will remain without holding the Crank. When the Plunger is raised so as to clear the top of the Cylinder, it can be readily swung around so that the Press can be filled or emptied. We furnish the machines Japanned or Tinned, and find the latter are steadily growing in favor.

A cloth or bag should be used when pressing fruit or jelly, to prevent the pulp or seeds from passing through the holes in the Strainer.

No.	JAPANNED	Prices.	No.	TINNED	Prices.
15	2 quart, Screw	4.00	20	2 quart, Screw	4.50
25	4 quart, Screw	5.00	30	4 quart, Screw	6.00
35	4 quart, Screw	6.50	40	8 quart, Screw	7.50

Nos. 15 to 30, inclusive, packed 6 in a case.

Nos. 35 and 40, packed 3 in a case.

**ENTERPRISE**  
**Improved Patent Suction and Force**  
**Measuring Faucet**

TINNED



No. 61

**For Molasses, Thick Oils, Varnish, Tar, Etc.**

**W**ARRANTED to measure correctly and draw a gallon of molasses in winter in one minute. The only measuring Faucet ever invented which has stood the test, having had its durability and economy proven by years of experience. No grocer can afford to be without it.

**Price \$3.00**

PACKED 12 IN A CASE.

**Advantages Over the Old Style Molasses Gate**

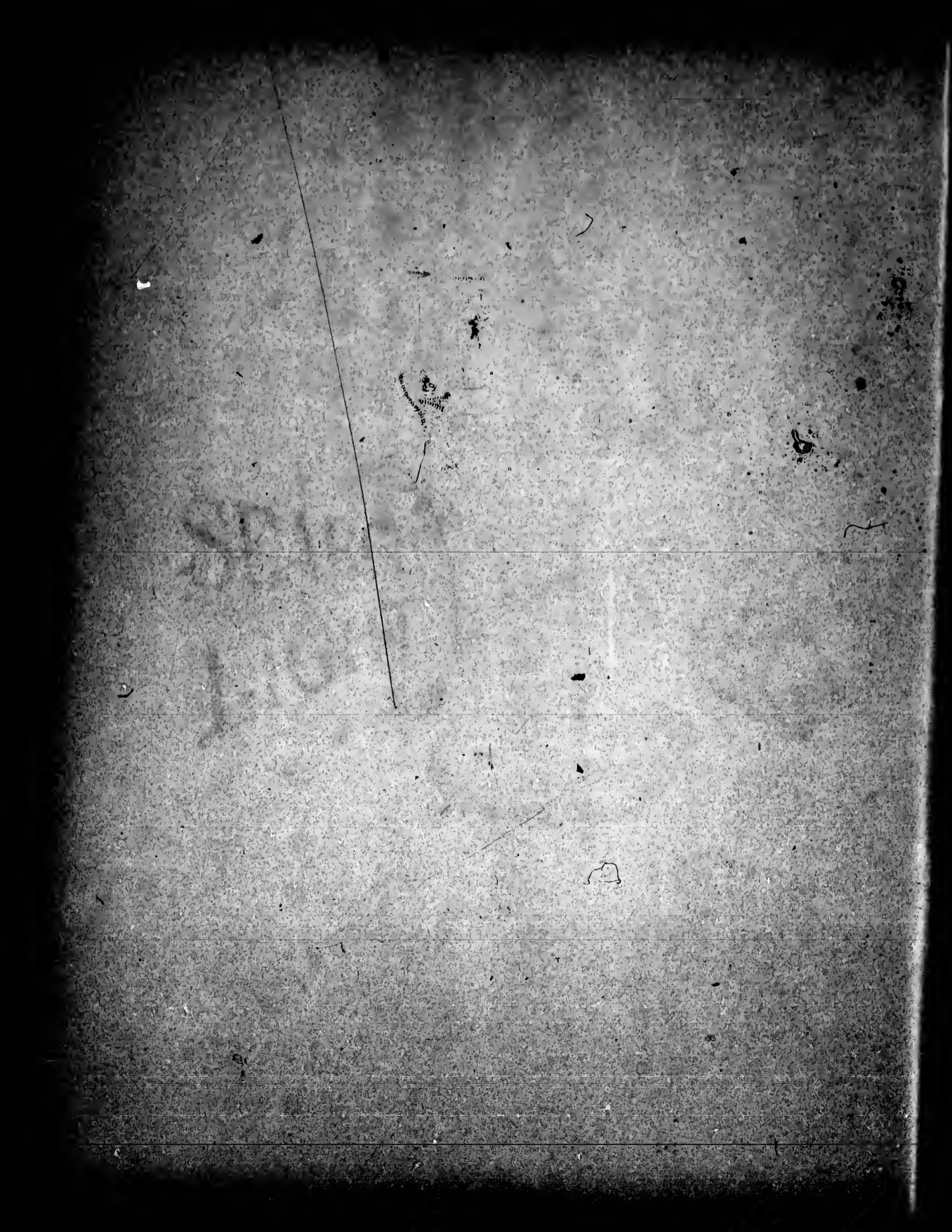
- 1st. It Saves Time, as it draws molasses, winter and summer, directly into a jug or bottle without the use of a funnel.
- 2d. It is Cleaner, as it dispenses with the use of measures, and is, consequently free from lice and dirt.













FULL SIZE CUT, 3 x 3.

● **Cast Iron, Japanned.**

**T**HESE Hinges are not adjustable but are packed flat, with the tenison of the springs adjusted, ready for use. They have no loose parts.

**One Dozen Pairs in a Box.**





