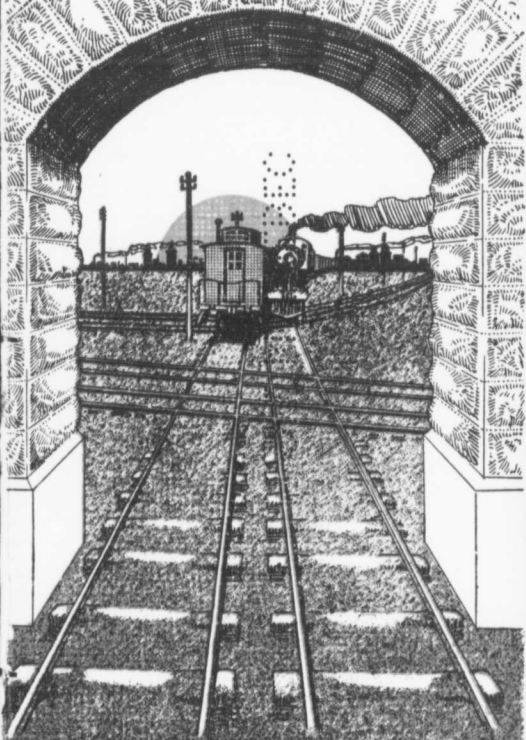


WEYBURN

ON THE SHORT LINE



THE
INTERNATIONAL
GATEWAY
TO CANADA EAST
CANADA WEST

A WORD BEFORE—

It might be broadly stated—so great has been the tide of immigration and the flow of people into the Province of Saskatchewan—so rapidly are its vast areas of fertile prairie being torn up by the plough and turned into wealth through the production of huge crops of golden grain—so wonderful has been the increase in its urban population and development—that a man could almost shut his eyes and place his pencil's point upon any town dotted upon the railway lines on Saskatchewan's map, and even so blind a search for a field of investment would be rewarded by the almost certainty of finding a town where his money would at least be as safely placed as in a bank. There is not a town in Saskatchewan that has not, to some extent, partaken of the prosperity and progress which are now and for the past few years have been spreading over Western Canada in all directions and arresting the amazed attention of the entire world.

But safety is not the sole consideration of the investor. Safety alone often means three per cent. on your money. With the splendid opportunities that are today opening in towns situated at strategic points—commercial, agricultural and railway centres—teeming with every element of great growth and development, the investor who, for lack of a little study and investigation, would overlook these "points of vantage", where in a few years his money may be doubled, trebled or quadrupled, could only excuse himself by pleading guilty to industrial lassitude or financial incapability.

With conditions as they are at present—with the splendid future prospects that are clear to the eyes of the seeing—the world has never before presented such opportunities for making money rapidly in real estate as is presented to-day in some of the rapidly growing towns of Western Canada.

Big cities do not grow by chance. There are laws that govern their growth. There are reasons why they grow to be big cities—inflexible, inexorable rules and reasons. City growth proceeds along absolutely fixed scientific lines. To make a town a possible future commercial, railway or distributing centre, the conditions necessary to such a result must pre-exist in the situation and character of the town itself, and its relation to the districts tributary to it.

THE INTERNATIONAL SECURITIES COMPANY, LTD., keeps its finger upon the pulse of Western Canadian progress. Its official records contain the most minute and authentic data obtainable about the enterprise, development, present situation and future prospects of the towns and cities of Western Canada. When it selects a certain town or city as a field of investment, its clients may be assured that such town or city is chosen because it has proved to be a live town, and one with the most essential elements of great future growth in its favor, and that these facts have been definitely determined by the Company, after a thorough and systematic investigation from every point of view, having any relation to it as an investment prospect.

In this circular THE INTERNATIONAL SECURITIES CO., LTD., presents authentic data and illustrated views which will show its reasons for selecting WEYBURN as a field for investment.

In the judgment of this Company, WEYBURN is one of the coming great commercial, agricultural, railway and distributing centres of Southeastern Saskatchewan, occupying a peculiarly strategic situation in relation to international traffic, and offers exceptionally attractive inducements to immediate investment. Property values are bound to advance with a rapidity and in a degree that will make BIG PROFITS for those who have the good judgment to seize its present opportunities.

The International Securities Co. Ltd.
SOMERSET BLOCK Winnipeg, Man.

The International Securities Company, Ltd.

PRESENTS HEREIN

Authentic Facts, Figures and Photographic Views of

WEYBURN



THE PRESENT GATEWAY OF INTERNATIONAL TRAFFIC
 THE METROPOLIS OF THE RICH SOURIS RIVER VALLEY
 THE FAST DEVELOPING AGRICULTURAL, RAILWAY, COMMERCIAL AND
 DISTRIBUTING CENTRE, AND
 THE FUTURE GREAT AND INDUSTRIALLY COMMANDING CITY OF SOUTH-
 EASTERN SASKATCHEWAN

In Canada West

Compiled from accurate and reliable data, furnished by the WEYBURN BOARD OF TRADE, the
 TOWN OFFICIALS OF WEYBURN, and from the latest obtainable Railway Information
 and Original Personal Investigation by the accredited agents of the

INTERNATIONAL SECURITIES COMPANY, LTD., of Winnipeg, Man



A CITY IN THE MAKING

Weyburn's Population

1902, 200

1911, 3,300

Increase

in 9 years, 1500%



Weyburn's Property Assessment

1904

\$48,810.00

1911

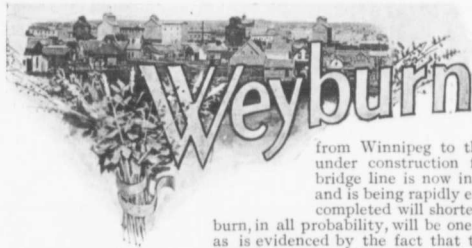
\$1,780,875.00

Increase

in 7 years, 3600%



The upper picture in this group shows a section of the business district of Weyburn. The central picture presents a bird's eye view of Weyburn's grain elevators, mills and wholesale district. The lower view is the main business street of Weyburn, looking north. This street, extended south, will pass through Evanston—see plat. Since this view was taken several new business blocks and separate store buildings have been erected on this street.



IS situated in the heart, of Southeastern Saskatchewan and is the most important junctional point of the famous Soo Line and the Canadian Pacific Railway between Moose Jaw and the Twin Cities of Minneapolis and St. Paul. Weyburn is the point on the Soo Line where the traffic from Chicago, St. Paul and Minneapolis meets the C. P. R.'s shortest line from Southern Saskatchewan to Winnipeg and its shortest line

from Winnipeg to the Coast, the Western extension of which is now under construction from Ogema to Lethbridge. The Weyburn-Lethbridge line is now in actual operation as far as Ogema, 48 miles west, and is being rapidly extended to its Lethbridge terminus. This line when completed will shorten the distance to the Coast about 300 miles. Weyburn, in all probability, will be one of the important divisional points on this new line, as is evidenced by the fact that the C.P.R. has now under construction and nearly completed a new home for engine crews, located near its present roundhouse, and

built to accommodate 20 families, with living rooms, general reading and recreation rooms, etc., and is projecting other local improvements in the way of increased roundhouse facilities, and machine shops, which clearly indicate its intention to make Weyburn a divisional point on the new Weyburn-Lethbridge line. Weyburn is a junctional point on the Stoughton Branch of the C.P.R., which connects Weyburn with the C.P.R. line from Regina to Winnipeg, by way of Souris, and also with the C.P.R. extension from Lauder north, which is now in operation as far as Alida and which is also being rapidly pushed to completion.

The peculiarly strong strategic position of Weyburn in relation to the international traffic, as well as the southern inter-provincial traffic in Canada West is apparent. In immediate connection with the net-work of railway lines centering in Moose Jaw and Regina on the north, to the east the southern main line of the C.P.R. runs almost as straight as the crow flies from Weyburn to Winnipeg, by way of Stoughton and Souris, 175 miles shorter than any other line from Winnipeg into Saskatchewan, while to the west the giant arm of the Weyburn-Lethbridge division of the C.P.R. is plunging mile by mile, reaching for its goal 400 miles away, opening new areas of fertile land to cultivation, planting new tributary towns and centres of population by the way, with lavish hand, and shortening the transportation distance between Winnipeg and the Pacific Coast, by way of Weyburn, at least 300 miles.

Weyburn is, therefore, not only destined to be the pivotal point on the short line from Winnipeg to the Coast, but, situated as it is, it is bound to be in a position to intercept the bulk of the traffic and transportation from the States to Northwestern Canada and Pacific Coast points, as well as the traffic from these points to Southern Canada West and over the international boundary line to Minneapolis, St. Paul and Chicago.

Weyburn has been well named The International Gateway. It is the most important commercially strategic town and railway centre entered by an international railroad west of Brandon, in the Province of Manitoba, which is 200 miles distant to the east. Weyburn is the natural and inevitable point of international traffic diversion to and from the States, both eastward and westward—it is the International Gateway for Canada East, Canada West and the United States.

A glance at the map issued by the Great Northern road will show the numerous feeders which it is throwing out towards the Canadian border and it is well known that preliminary surveys have been made by the Great Northern through Southeastern Saskatchewan, taking in Weyburn as one of the objective points under consideration. The extension of either the Rugby-Antler branch or the Granville-Sherwood branch or the Berthold-Crosby branch of the Great Northern into North Saskatchewan would be almost certain to enter Weyburn in their natural course.

The Canadian Northern also have now under consideration a connection with Weyburn, from either their Regina-Brandon division, north-west of Weyburn, or from their Maryfield branch, now under construction to Lethbridge to the south of Weyburn or both. In response to a letter from the C.N.R. Superintendent, as reported in the Weyburn Review of April 11th, 1911, the Board of Trade of Weyburn appointed a delegation to meet the officials of the C.N.R. road to confer upon right of way, etc. This committee met with Mr. McLeod, the general manager of the C.N.R., and were given very favorable assurances of the future intentions of the C.N.R. in regard to Weyburn. The C.N.R. will, in all probability, enter Weyburn from the south by way of Radville, and an extension to Maryfield to connect with Weyburn is also under consideration. It is understood that the preliminary surveys for these extensions are now being made.

In addition to this, it is almost beyond doubt now that the Grand Trunk Pacific will enter Weyburn with a very important line in the near future. The following letter from the Vice-President and General Manager of the Grand Trunk Pacific road, written to the Secretary of the Board of Trade of Weyburn, will not only give evidence of the intentions of that company to push this projected line into Weyburn at an early date, but it will also give some idea of the probable route to be chosen and which, it may be clearly seen from the tone of the General Manager's letter, will establish a most important connection between Weyburn and the main line of the Grand Trunk road.

GRAND TRUNK PACIFIC RAILWAY, MAN., July 4th, 1911.

SECRETARY, BOARD OF TRADE, WEYBURN, SASK.

DEAR SIR—

In further reference to the question of our proposed branch line in a southerly direction through Weyburn, I have been giving the matter a good deal of thought and am now inclined to the view that it would serve your community better, as well as serve our purpose, if the said branch were constructed in a south-westerly direction and thence westerly, keeping a distance of from 12 to 20 miles north of the international boundary through the Province of Saskatchewan. The line easterly from Weyburn might also in the future be extended to join our main line somewhere near the eastern boundary of Saskatchewan, giving a cross country road that seems to me to be of very great benefit to all communities concerned. *****

I am anxious to get a survey party in the field as soon as possible, and will be obliged if you will let me hear from you regarding this matter at an early date. I may add that the first proposition to build a line south from Weyburn to the boundary does not appear to me as a promising one from the standpoint of railway operation, as at best it would be but a spur or side line with a very limited service. On the other hand the line I now suggest would serve a much larger territory and Weyburn would have the advantage of being placed on a through line.

Your Board, of course, will understand that as yet we have no charter for the branch in question, but this is a matter that we will doubtless be able to arrange for through the Provincial Government.

In the meantime we will proceed with the location of the line so that there may be no delay in having this important branch constructed.

Yours truly,

E. J. CHAMBERLAIN,
Vice-President and General Manager.

Location of Weyburn



Along the River

WEYBURN IS 92 MILES SOUTHEAST OF MOOSE JAW, 133 miles southward from Regina, the Capital of Saskatchewan, by way of Moose Jaw, and 127 miles from Regina by way of Stoughton.

Weyburn is 76 miles north-west of North Portal, on the international boundary line and 48 miles in a direct north line from the boundary.

Weyburn is 490 miles west of Winnipeg, by way of the northern C.P.R. route through Moose Jaw and Regina.

Weyburn is 315 miles west of Winnipeg by the "Short Line" through Stoughton Junction and Souris.

Weyburn is 636 miles, on the Soo railroad, and almost on a direct air-line, north-west from the Twin Cities, Minneapolis and St. Paul.

It is the short line that gets the business. It is in human nature to cut the corners, to save time, to get to the goal in view with the least effort and with the greatest speed possible. Every town common and vacant city corner lot has a diagonal path across it, worn by the "short-cutters." Weyburn is commandingly located at the nucleus of the C.P.R. and Soo Short Lines, East, West, North and South.

The completion of the Weyburn-Lethbridge extension of the C.P.R. alone, in connection with the Soo line from the south, will make Weyburn one of the most important railway towns in Southern Saskatchewan. The advent of the G.T.P., the C.N.R. and Great Northern would place Weyburn in the very forefront of Western Canadian cities as a railway centre and a dominant distributing point.

Where facts are apparent and conclusive, argument is almost an impertinence. We place the facts before you, we give you the benefit of all the data obtainable from authentic sources, we give you our judgment of the situation, based upon a wide experience and knowledge of city and town development—it is for YOU, seeking a place where your invested dollars will increase and multiply, to decide and ACT.

Topography of Weyburn

WEYBURN is delightfully situated in the northern portion of the Souris River Valley, and its site is, for the most part, on an apparently level plain, although in fact it slopes gently and imperceptibly towards the river banks from gradually rising elevations to the north and south, making the natural drainage of both the residential and business districts almost perfect.

The Souris River winds picturesquely through the central portion of the town, which is spreading in almost equal divisions north and south from the river banks. The Souris River, after flowing southward in a meandering course through the beautiful and fertile Souris River Valley, bears to the east and empties its waters into the Assiniboine, after a course which takes it through 450 lineal miles of territory.

The altitude of Weyburn is 1847 feet above the sea level, and the town lies within the range of the warm Chinook winds, which often come to clear the February fields of snow and to afford a mild climatic oasis in the middle of the winter season. A large tract of land lying south of the railway tracks and on both the north and south banks of the river has been reserved by the town for park purposes, and will be improved into one of the most attractive urban beauty spots in South Saskatchewan.

The residential districts of Weyburn, both in the north and south portions of the town, are slightly, dry, healthily located, and naturally adapted for building purposes without grading or any other preliminary preparation other than the excavations necessary for foundations.

The Weyburn District—Its Extent, Climate, Fertility

THE DISTRICT DIRECTLY TRIBUTARY TO WEYBURN, and which looks to Weyburn as a distributing and trade centre, comprises an area of from forty to fifty miles in every direction of the compass and embraces an acreage of over a million and a half acres of the best agricultural land in Saskatchewan, or, in fact, in all Canada. The Weyburn district is one of the most thickly settled in Saskatchewan and the cultivation of new lands is progressing with marvellous activity. The nearness to railway facilities, the exceptional fertility of the soil and its

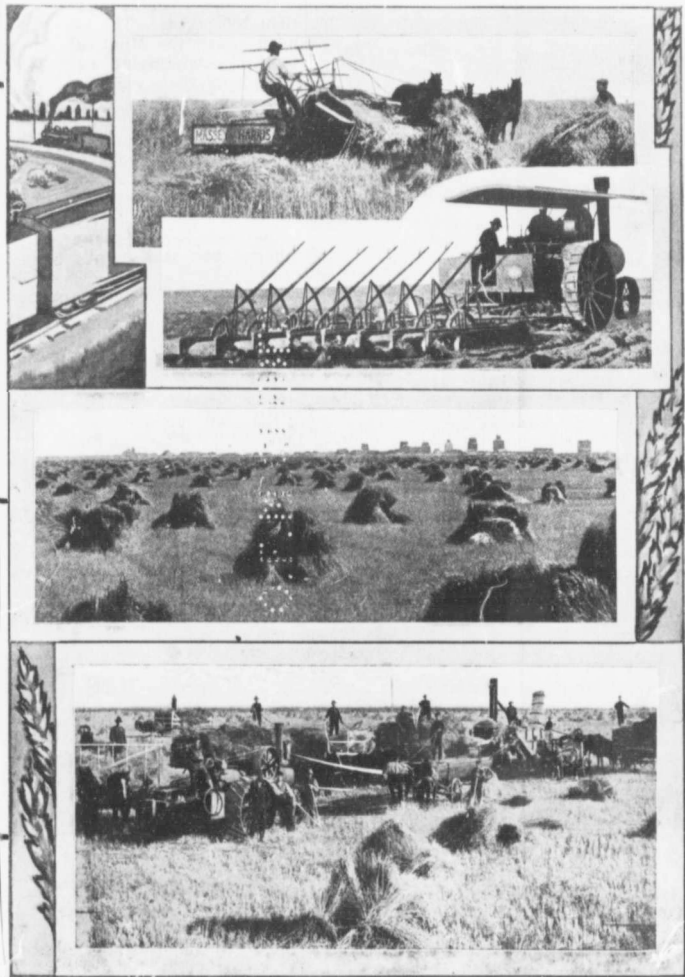
specially advantageous position with relation to the international traffic, make it a favored section with incoming settlers from the States.

The climate of Southern, and especially South-eastern Saskatchewan, is an ideal one for grain growing purposes and for mixed farming. There are a number of features that combine to make it not only a healthy and invigorating climate, but a pleasant one to live in and experience the "joys of life" the year round. The elevation above the sea, which averages from 1,500 to 2,000 feet, insuring a clear and dry atmosphere; the comparatively light precipitation, adequate, however, for all practical purposes; the equable temperature during the winter months, the light snowfalls, the large proportion of bright sunshine, the summer breezes and the clear ozone-laden air—these are features of the South Saskatchewan climate that give it high commendation, and that cannot be too strongly emphasized. Devastations by storm or flood, earthquake or cyclone are absolutely unknown.

The soil of the Weyburn district cannot be surpassed for variety, richness, fertility and adaptability to cultivation. Wheat is, of course, up to the present time the all-important crop and is grown in the Weyburn district with great success. 1,250,000 bushels of Wheat were marketed in Weyburn last season. Oats grow to perfection here—bright, strong tall straw that produces abundance of feed—splendid long heads of grain, well filled and turning out enormous yields. Barley and Flax are cultivated with marked success and Barley especially, in view of the nearness to the United States markets, is destined to become one of the future great crops of this district. Corn, Alfalfa and all the tame grasses known to the northern climate can be grown profitably in the Weyburn district. The root crops—Potatoes, Turnips, Sugar Beets, Carrots, grow to great

sizes and yield immense crops. In fact and in short, the Weyburn district, from an agricultural standpoint, is the ideal district for mixed farming, which is the farming of the future.

THE POPULATION OF THE DISTRICT DIRECTLY TRIBUTARY TO WEYBURN, AND WHICH LOOKS TO WEYBURN AS ITS TRADING, MARKETING AND DISTRIBUTING CENTRE, IS ESTIMATED AT BETWEEN FORTY AND FIFTY THOUSAND. OVER A BILLION AND A HALF DOLLARS WAS PAID IN CASH AND THROUGH THE WEYBURN BANKS, FOR THE GRAIN PRODUCTS OF THIS DISTRICT LAST SEASON, AND THE ESTIMATED VALUE OF THE FARM PRODUCTS FOR THIS SEASON, WHICH WILL BE HANDLED IN WEYBURN, IS NEARLY TWO MILLION DOLLARS. THIS MEANS CASH TURNED INTO THE CHANNELS OF TRADE, RE-INVESTED IN LANDS AND IMPROVEMENTS, OR ADDED TO THE RESERVE WEALTH OF THE COMMUNITY, AND EACH RECURRING YEAR ADDS VALUE TO THE FARMS, TO THE BUSINESS OF THE MERCHANT AND TO THE TOWN PROPERTY OF WEYBURN IN AN ARITHMETICALLY PROGRESSIVE PROPORTION OF INCREASE.





Weyburn in 1903

Look First on This Picture—

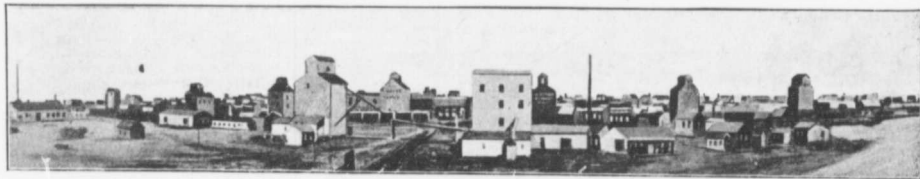
WEYBURN IN 1903.

Weyburn then had less than 200 people. The lot upon which the Montreal Bank is now situated was offered in that year for \$75. It afterwards brought \$12,000. Any lot in the foreground of the picture could probably have been purchased for \$100. To-day they are valued at from five to ten thousand dollars and many are not for sale at any price.

And Then on This—

WEYBURN IN 1910, 8 YEARS LATER

A bird's eye view taken from a distance south. It does not show up the town's activity, it is true, to the best advantage.—bird's eye views of towns built on a level seldom do. But anyone can see at a glance that we have here the composite picture of a centre of industrial activity,—the rough projection of a CITY IN THE MAKING. A hundred new residences and a dozen new business blocks have been built since this picture was taken, and as many more are now in process of erection. The \$85,000 Weyburn Security Bank Building, the \$25,000 Rex Fruit Company Warehouse, the \$40,000 Eaglesham and Cook Block, the \$25,000 New Public School, the \$35,000 Soo Hotel were not built when this view was taken. Yet it is enough to give the reader an object lesson in Weyburn's humble beginning, and Weyburn's big development in the short space of eight years. Weyburn's actual expansion from a town into a city has only just begun. The big things that make for city growth are only now being acquired. Look well, then, at this picture.



Weyburn in 1910—8 Years later

And Then—

PICTURE TO YOURSELF WHAT WEYBURN WILL BE FIVE YEARS FROM NOW, WHEN THE IMPROVEMENTS AND DEVELOPMENTS EVEN NOW UNDER WAY HAVE BEEN COMPLETED—WHEN THE NEW RAILROAD LINES WILL BE IN OPERATION TO WEYBURN—AND WHEN WEYBURN MAY BE A CITY WITH 10,000 OR MORE PEOPLE. THERE IS NOT A SINGLE OBSTACLE AHEAD TO RETARD THE GROWTH OF WEYBURN. ON THE CONTRARY, THE PATHS OF PROGRESS ARE SPREAD OUT BEFORE WEYBURN IN EVERY CONCEIVABLE DIRECTION. PROGRESS, DEVELOPMENT, PROSPERITY ARE SEEKING WEYBURN THROUGH EVERY AVAILABLE COMMERCIAL, AGRICULTURE AND RAILWAY CHANNEL OF ENTRANCE. WEYBURN HAS GROWN, MUST GROW, WILL GROW. WEYBURN IS BOUND TO BE ONE OF THE BIG CITIES OF SASKATCHEWAN.

What Prominent Bankers say of

Western Canada's Future

Bankers are conservative. They are not given to advertising or exploitation. They weigh their words in financial scales. Read the glowing words of these cautious, prudent, foreseeing men about the conditions in Western Canada.

Mr. D. R. Wilkie, President of the Imperial Bank of Canada, at the General Meeting of Shareholders held at Toronto, May 26th, 1909, said:

"The estimated acreage under crop in the three North-West provinces in 1908 was 10,336,070, yielding in all 238,664,000 bushels of wheat, oats, barley and other grains. This year the estimated acreage under crop is 11,200,000. Wheat seeding, although later than last year, has been finished under good conditions and there are favorable prospects of an average crop. When we look forward to the day when even twenty per cent. of the arable lands of the North-West provinces, which are estimated to number 253,000,000 acres, and of which little more than four per cent. are under crop, are cultivated, can we overestimate the results which will follow therefrom and the effect which the output will have upon the industrial progress and on the carrying trade of the Dominion?"

Mr. Stuart Strathy, General Manager of the Traders' Bank of Canada, at the 25th Annual Meeting of Shareholders, held at Toronto, on January 25th, 1910, said:

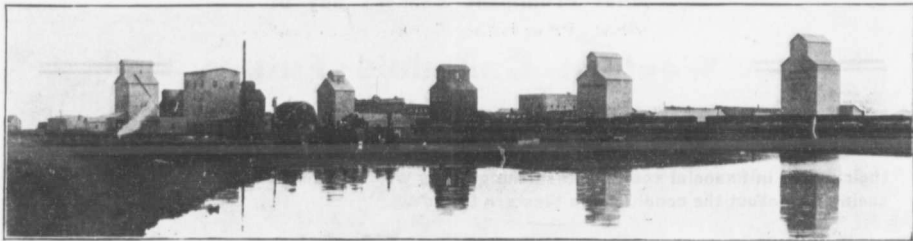
"We have been blessed with a bountiful harvest during the period under review, not only in one section of this vast Dominion, but in all sections, the field crops alone yielding in money value about \$533,000,000, not to mention all the other natural resources of this vast country. True it is, our population is very limited, considering the immense territory belonging to us; but a large tide of immigration has commenced to be attracted towards us. It is estimated that in the neighborhood of 90,000 American settlers alone, with perhaps \$90,000,000 in cash, have settled in the North-West Territories within the last year. It is the platitude to say that the potentialities of this country are not to be conceived of, and the prospects of the country are identical with the prospects of its financial institutions, and that your property will increase in value with the growth of the country it is only reasonable to assume. The rapid settlement which will ensue by the completion of three transcontinental railroads will increase our population at an enormous rate, and who is bold enough to predict what proportions its commerce will assume, say, within the next ten years? The money markets of the world are open to us, investors abroad realizing the intrinsic value of our securities and the increasing value which will naturally accrue to the same as the country is developed."

Sir D. H. McMillan, President of the Northern Crown Bank, at the Fourth Annual Meeting of Shareholders, held at Winnipeg, February 9th, 1910, said:

"The outstanding feature in connection with Western Canada is the illimitable possibility of future expansion. Notwithstanding the small proportion of the available acreage of the Western Provinces, which is under cultivation at the present time, the enormous crop production of last year, together with the influx of settlers that is taking place, indicates that an enormous volume of business will be transacted in the course of the next few years. With only 12 per cent. of the available acreage under cultivation, the Province of Saskatchewan now ranks third of all the States of the Union and Provinces of Canada in wheat production, the States of Minnesota and North Dakota alone showing a greater production, while the yield per acre greatly exceeds that of either of the States mentioned. Taking into consideration the affairs of the Bank and the outlook in the West, prospects were never brighter, and we look with confidence to another prosperous year for the Bank as well as for the country."

(From Winnipeg Telegram, September 2nd, 1911)

"If ever I was in doubt about the great future of the West, I am thoroughly satisfied now. No man can estimate what the progress will be here during the next decade," said E. F. Hebden, of Montreal, General Manager of the Merchants Bank of Canada, who has just returned from a month's trip of inspection over the Western branches of the Bank. Mr. Hebden left Montreal on July 27, and proceeded straight through to Victoria, and from thence worked eastward. He had a busy time, as of the 68 branches of the Bank, only some half dozen were not visited by him. He was delighted with his trip and considers that the outlook in the West was never more promising. "General conditions are excellent," he said. "I did not find a single point where they were unfavorable."



Weyburn's Seven Grain Elevators

Weyburn's Seven Grain Elevators

THE STately BULK OF SEVEN HUGE GRAIN ELEVATORS, silhouetted against the blue of the sky and the green and gold of the distant grain fields, is the impressive view that greets the eye of the traveller long before the train that carries him reaches the town of Weyburn. These mute custodians of the country's raw wealth are the best standing advertisements of Weyburn's prosperity that could possibly be desired. They are industrial monuments that tell at a glance the story of the great productiveness of the Weyburn agricultural district. Their combined capacity is 235,000 bushels of grain. Last season, through these elevators and by the direct method of shipment now in vogue, from farm to car, over 1,250,000 bushels of grain were handled in Weyburn. This season the yield promises to be greater. Note what the Winnipeg Free Press correspondent, sent out to ascertain the present conditions of crops in Western Canada, says about the Weyburn district, under date of August 24th:

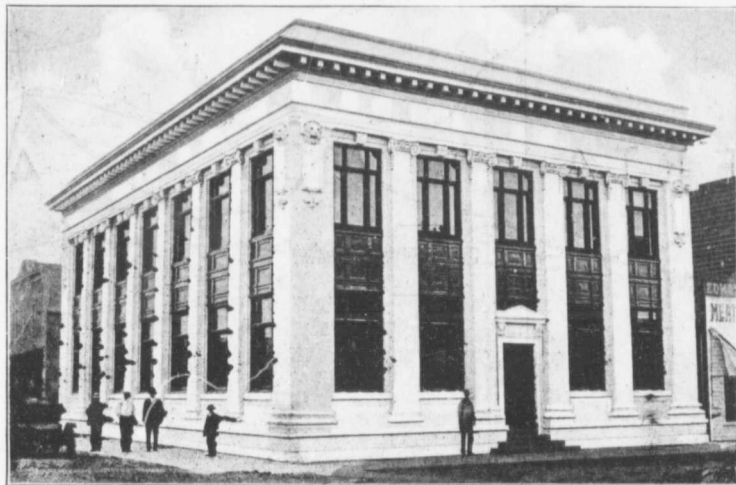
"The best cultivated farms and the best crops were seen at Weyburn. In this district more attention is now being given to the cultivation of flax than in former years, but it seems with many to be still an experiment. The marked difference between adjoining fields leads me to believe that some farmers have the secret of successful flax culture, while others have much to learn * * * There is a considerable increase in the acreage under crops along this line, probably 20 per cent. over that of 1910. Wheat should average 20 bushels, oats 40, barley 35, flax 12. The people of the district are enterprising and justly proud of their agricultural and mineral resources." (By Telegraph to Winnipeg Free Press, August 24th).

Weyburn's Soo Mills and its Famous Imperial Flour

THE FINE QUALITY OF THE WHEAT GROWN IN THE WEYBURN DISTRICT, and the splendid milling facilities furnished by the mills of the Soo Line Milling Company, situated on a spur track close to the railway station, have resulted in the production of a brand of flour whose exceptionally high quality has given it a widespread reputation, and opened up for this product a wide area of distribution. These mills have a capacity of 150 barrels of flour a day, yet they are totally inadequate to meet the demand for its output. The Soo Line Milling Company are installing more new machinery this year to enable them to keep up with their ever increasing business. Each year there are alterations and improvements made at the mills, but this year they have purchased new machinery to the value of several thousand dollars which will be installed shortly.

During the present summer the demands for the mill's products has been so large that the mill has been kept running night and day and at that they have been compelled to turn away a number of orders for carlots of flour. The mill will shut down for a short time within the next few weeks for the annual overhauling of the plant and for the new machinery to be set up during the period that the repairs are being made.

Weyburn's Five Chartered Banks



The Weyburn Security Bank Building, just completed, cost \$85,000

creasing production and trade must expand in proportion. Notwithstanding there were already four banks in the field at Weyburn, The Home Bank of Canada, after looking the situation over, decided that Weyburn was still a good location for another bank, and opened its doors for business in Weyburn on September 1st.

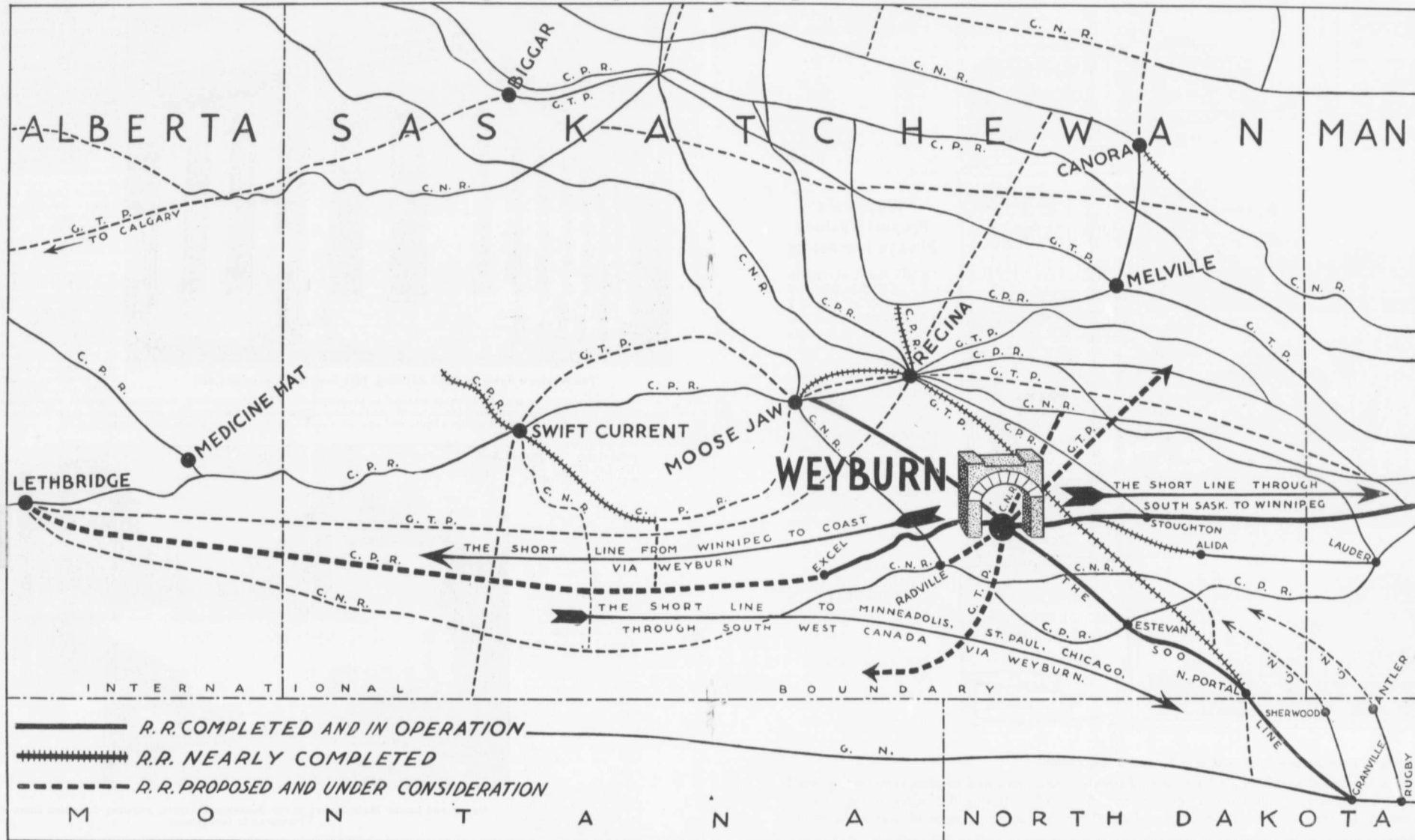
WEYBURN ENJOYS THE UNIQUE DISTINCTION OF HAVING THE ONLY chartered bank, financed by local capital, west of Winnipeg. The Weyburn Security Bank started business as a private bank in Weyburn, when it was little better than a village. To-day it is capitalized for \$1,000,000, and has four branch banks established in Western Canada, Weyburn being their central headquarters. The Weyburn Security Bank has just completed and moved into their new building, a palatial structure of white stone and steel that could hold up its facade proudly in Wall Street, New York, or Threadneedle Street, London. This building cost \$85,000, and is a splendid monument not only to the enterprise of the men who built up such an institution out of purely Western resources, but also to their faith in the great future of Weyburn.



Upper and Lower Main Street in the Business District, showing Canadian Bank of Commerce in foreground

NO CITY IN WESTERN CANADA IS BETTER EQUIPPED with banking facilities than Weyburn. Weyburn has five chartered banks: The Weyburn Security Bank, The Canadian Bank of Commerce, The Union Bank of Canada, The Bank of Montreal and The Home Bank of Canada. At first glance so large a number of great financial institutions would seem disproportionate to the present size of the town, but it must be remembered that the territory directly tributary to Weyburn is very thickly settled and the acreage of cultivated lands and consequent crops is increasing marvelously year by year, and the volume of available money necessary to the demands of in-

Study this Map—With an Eye to the Future



Note Weyburn's Strategic Position "on the Short Line" between Winnipeg and the Coast, and between Southern Canada and the United States. The Railway Developments now under way will make Weyburn an absolutely Controlling Centre of International Traffic—The International Gateway

Weyburn's Population—Always Growing—1,500% Increase in 8 Years



TYPES OF
NEW RESIDENCES
ERECTED 1910



OVER 100 NEW
RESIDENCES NOW
BEING CONSTRUCTED

THE POPULATION OF WEYBURN IN—

1903	Was	200
1906	"	600
1907	"	800
1909	"	1,100
1911	"	3,300

and at its present rate of growth, in 1915 Weyburn will have 10,000 PEOPLE.

Weyburn's Property Values Always Increasing

THE MOST AUTHENTIC RECORD OF PROPERTY VALUATIONS are the assessment rolls showing the valuations assessed as a basis for taxation. The following figures showing the progressive increases in Weyburn valuations year by year are furnished by Geo. D. Ross, the Secretary and Treasurer of the town of Weyburn and are remarkably significant of the town's marvellous expansion and increase in taxable values.

ASSESSED VALUATION OF PROPERTY

1904	\$48,810
1905	264,360
1906	383,060
1907	876,512
1908	909,085
1909	1,221,535
1910	1,455,454
1911	1,780,875

Showing an increase in valuation in 7 years of over 3600%.

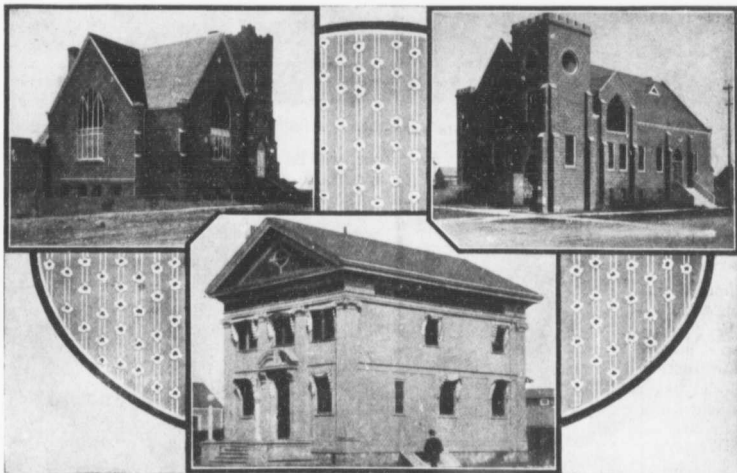
The Customs Collector at Weyburn states that during four and a half months, commencing April 1st, 1910, the Customs collections at Weyburn were \$15,186.53. During the corresponding time for the year 1911, the Customs collections were \$60,427.89; showing an increase of over 400% within a year.

Weyburn's Newspapers

WEYBURN HAS TWO NEWSPAPER PLANTS, which issue eight-page weekly papers, the Weyburn Review and the Weyburn Herald. Both papers are live ones, ably edited, progressive and enterprising in their news departments, and in close touch with the aggressive spirit of the town. The Herald is owned and edited by Mr. W. H. Bundy, the Review by Messrs. Brown & Phelps. Both papers are now contemplating daily issues.

Weyburn's Churches

ALL THE PROMINENT DENOMINATIONS ARE ESTABLISHED IN WEYBURN. The Anglicans, the Methodist, the Baptist, the Presbyterian and the Roman Catholic Churches have erected substantial church edifices, and services are regularly held. The Presbyterian Church and Manse and the Methodist Church are two of the notable buildings of the town, and other denominations are taking steps to erect new structures.



Presbyterian Church

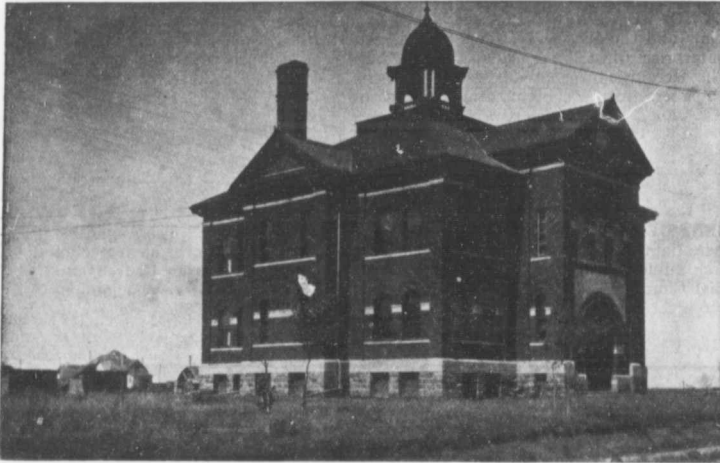
Canadian Bank of Commerce

Methodist Church

New Post Office and Armory, \$65,000

THE plans have been completed and tenders called for the erection of the new Dominion Building, to be occupied by the Post Office and as an armory for the Northwest Mounted Police Department. The Post Office building proper will cost \$50,000, and the armory annex, recently decided upon, will cost an additional \$15,000. These buildings will be located in the business centre of the town, and in points of architectural beauty and modern construction will stand comparison with any public buildings in the West.

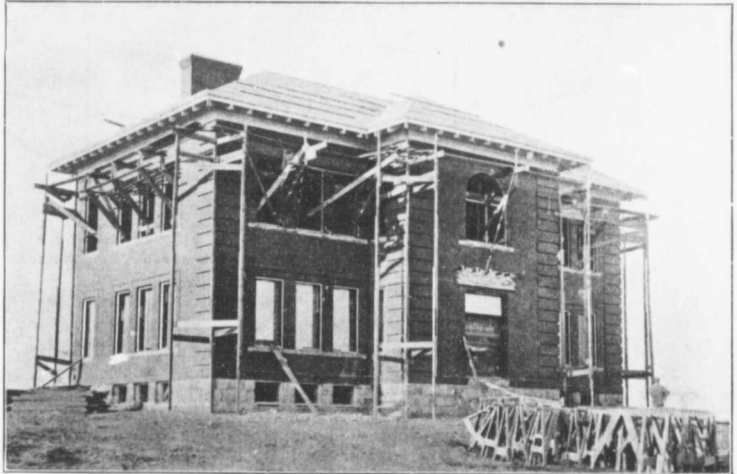
Weyburn's Schools



North Side Public School

which the full high school curriculum will be taught, will be in full operation. One of the graded schools is situated in the north portion of the town and the other in the south portion of the town. The south school has just been completed at a cost of \$25,000, and is but eight blocks distant from Evanston addition. The present capacity of the Weyburn graded schools and high school is in excess of 1,500 pupils.

In addition to its present educational facilities, Weyburn will soon have a Collegiate Institute, such as has been established in many of the larger cities of Western Canada. This will be a preparatory school for university students and for the purposes of Normal School training. The site for this new Collegiate Institute has been selected, the plans made, and tenders will soon be called for its construction. The estimated cost is \$40,000.



South Side Public School, just completed, cost \$25,000
This School Building is situated within Eight Blocks of EVANSTON Subdivision

WEYBURN IN ITS EDUCATIONAL FACILITIES, is keeping pace with its material progress. Its teachers are selected from high-grade university and Normal School graduates, and the methods of instruction employed are abreast of the most advanced pedagogical ideas. Its school houses are of modern construction and equipped with every device conducive to the health and comfort of the pupils. This year two graded schools and a high school, in

Weyburn as a Wholesale, Jobbing and Manufacturing Centre

IN RECOGNITION OF THE STRATEGIC SITUATION OF WEYBURN AS A DISTRIBUTING POINT, the C.P.R. have just granted to the town their SPECIAL WHOLESALE AND JOBBING RATES to become effective Sept. 4th. This is a special reduced freight rate that is only enjoyed by such towns and cities as Regina, Moose Jaw, Saskatoon, Calgary and the large cities of Western Canada. The fact that this concession has been made to Weyburn is a sure indication of the high estimation in which Weyburn is held by the railroad company as a distributing centre at the present time and will do much towards bringing new wholesale, jobbing and manufacturing industries into the town.



The Rex Fruit Company's new Warehouse in the Wholesale District, just completed, cost \$28,000

In addition to this, Weyburn holds out attractive inducements to such industries. Weyburn has reserved certain lands, to be held as sites for future wholesale, jobbing and manufacturing establishments, situated in close proximity to the spur track built by the railroad for the convenience of such large shippers and within easy access by switch tracks to the main railway lines.

WEYBURN HAS AT THE PRESENT TIME NINETEEN FIRMS ENGAGED TO SOME EXTENT IN THE MANUFACTURING AND JOBBING TRADE, and the Board of Trade is receiving inquiries every day from new firms desiring to locate industries there. The following is a list of Weyburn's Wholesale Jobbing Houses and Factories:

The Weyburn Brick and Tile Company
The International Harvester Company
Moore & Company, Builders' Supplies
The McKinnon Co., Department & Mail Order House
The Saskatchewan Furniture Company
Robinson & Walsb, Wholesale Liquors
Geo. Belschel, Automobiles, Steam Plows, etc.
Rogers Lumber Company
Canadian Investment Company
Golden West Grain Company
Imperial Oil Company

The Weyburn Fruit and Grocery Company
The Massey-Harris Implement Company
Weyburn Hardware and Furniture Company
The Weyburn Machinery Company
Soo Line Milling Company
Rex Fruit Company
Weyburn Implement Company (one of the largest in the Province, with three branch houses in Saskatchewan, Weyburn being their headquarters).
Rat Portage Lumber Company

The Weyburn Brick and Tile Company's Plant

THE finest clay suitable for the manufacture of pottery, tiles, building brick and fire brick is found in abundance at Weyburn and in the Weyburn district. Realizing the splendid opportunities presented for manufacturing and distributing such products, The Weyburn Brick & Tile Company has established at Weyburn one of the most complete brick and tile manufacturing plants in Western Canada, and with a capacity now of five modern ovens, it is unable to meet the demand for its output. The reputation of this company's brick for building purposes has travelled far and wide. While the writer was in Weyburn, this plant was working on an order for 600,000 brick for Moose Jaw contractors, and recently the head of the building department of the Canadian Bank of Commerce, visited the plant and after a thorough inspection made a report to his home office that the brick made in Weyburn were of as good quality as any in Canada. The Weyburn Brick & Tile Company are preparing to enlarge their plant to almost double its present capacity.

EVERY INDICATION POINTS TO WEYBURN'S FUTURE COMMANDING PRE-EMINENCE AS A WHOLESALE DISTRIBUTING CENTRE.

Weyburn's Hotels



Royal Hotel

ropolitan life and makes one forget that he is only in one of the fast-growing towns of Western Canada.

The Royal Hotel, W. T. McKenzie, proprietor, is a three-story stone structure fronting the railway station. It has an English chef, one of the best equipped cuisines in the West, a grill room and cafe, and is conducted on the European plan. Steam heated, electric lighted and fitted with every modern hotel convenience.

The Waverley Hotel is a three-story brick building, T. A. Underwood, proprietor, modern in every detail; situated on a corner diagonally opposite the railway station. Sample rooms, dining room and cafe, well furnished rooms, parlors, writing rooms, etc., steam heated and electric lighted throughout.

The Soo Hotel, shown in cut in this folder, is a new structure in the up-town district; European, with cafe attached; newly furnished and equipped with every modern hotel convenience.

The Grand View Hotel, Wesley Gallagher, proprietor, has just been remodeled and renovated throughout and gives excellent service at moderate rates.

Besides these four large hotels, Weyburn has several other well equipped houses that cater to the transient

trade in various sections of the town. Weyburn enjoys the reputation of being one of the best hotel towns in the West.

**WEYBURN'S
HOTELS
ARE FAM-
OUS THROUGH-
OUT WESTERN
CANADA** and along the Soo Line in the States for their comfort, complete appointments and the excellence of their service. They are always crowded to their full capacity. To sit in the rotundas of either the Royal, the Waverley or the new Soo Hotel and watch the milling throngs that congregate there seemingly at all hours of the day and night gives one the flavor of real met-



Soo Hotel

Weyburn's Model Municipal Power Plant

POWER WAS TURNED ON at the new municipal power plant on July 1st, this year. This plant, for its size, is one of the most complete and up-to-date in Canada. It has been built to supply not only present needs but every provision has been made for enlargement as the town grows and the demand for light and power increases. The new plant will develop electricity for power and lighting, and operate the pumps in connection with the waterworks system and sewer systems. The plant is housed in a fire-proof brick building sixty by one hundred feet, and ample space is provided for additions without interfering with the operation of the other units. The power house is located close to the Souris river, and is served with a spur track, where fuel from the mines south on the Soo Line can be cheaply and advantageously handled. The most modern of engineering practice prevails throughout. The power equipment consists of a 15 and 30x30 cross-compound Corliss engine, directly connected to a 250 kilowatt alternating generator; one 14x24 Corliss engine and 75 kilowatt generator, a seven panel switchboard to control and regulate the output, which can be made sufficient for a city of 75,000 people.

The plant throughout has been designed to give an uninterrupted service, and every precaution has been taken to guard against accidents and break-downs. The electric light plant now operates over thirty 100-power street Tungsten arc lamps and about 6,000 incandescent lights in stores and residences. It is the intention of the town council to furnish a continuous power service, and ample provision has been made for present demand and future additions.

The Water Supply, Pure and Abundant

THE WATER PUMPING MACHINERY AT THE WELLS, a mile west of the town, which is operated also from the power plant, has been installed and an ample supply of the purest water is now available from deep-water wells and lateral galleries, having a daily capacity of 100,000 gallons. An analysis of the water shows it to be of absolute purity, clear and sparkling, and the supply inexhaustible. Forty thousand dollars additional bonds were recently voted by by-law of the town council for a further extension of the water mains.

Fire Protection

THE POWER PLANT ALSO INCLUDES A FIRE PUMP for special pressure purposes and capable of inducing an additional flow of 700 gallons per minute above the ordinary flow of the domestic water supply. In addition to the pressure pump, there is a gravity water pressure tank with a capacity of 150,000 gallons, which is situated on an eminence in the south portion of the town, designed as a reserve protection in case of extraordinary fires. These facilities for fire protection have been examined and passed upon by the Board of Underwriters, and have been pronounced full and ample for the purposes intended. The insurance rates, in consequence, are as low in Weyburn as in any town or city in Saskatchewan.

Sewage Disposal Scheme

THE GRAVITY SYSTEM OF CARRYING THE SEWAGE HAS BEEN ESTABLISHED, with ejectors operated from a plant built in connection with the main power plant. The method of disposal is patterned after the most approved scientific treatment, designed to eliminate all putrescible matter and the liquid returned to the river in a pure condition. \$35,000 in sewer bonds have been issued and sold by the town and the sewerage system now installed and in process of lateral extension throughout the town will, when completed, be among the



The Waverley Hotel

Demand for Weyburn Real Estate

Flashlights from the Local Papers Tell the Story, First-Hand, of Real Estate Activity in Weyburn

TOWN LOTS AC1.

(From Weyburn Herald, August 10th, 1911).

Weyburn town lots are certainly booming. Scores of young men in the stores and offices are buying from one to five lots in one or the other subdivisions and already some of them have turned them over to outside buyers at an advance in price from fifty to one hundred dollars. Last week one young clerk made \$50 a lot on three lots and had only held his lots three weeks.

Weyburn is the natural distributing centre for Southeastern Saskatchewan and with the present railway connections and the prospects for more lines this town has the opportunity to develop rapidly. It is almost definitely settled that Weyburn will be made the judicial centre for the southern portion of the province and if so property now on the market will go up in price at a rapid rate. Weyburn lots are good buying.

BIG DEAL IN WEYBURN REAL ESTATE

(From Weyburn Review, August 2nd, 1911).

Another big deal in Weyburn real estate was put through last week by which a Liverpool syndicate of business men become the owners of several lots on Souris Avenue, purchased from W. H. McCallum & Co., the local real estate firm. The property transferred in the deal are lots 10-11, block 6; lots 1-2-3, block 26; lots 19-20, block 37, and lots 16-17, block 7.

For the nine lots the price paid was \$14,600, or nearly \$1,625 per lot. The transaction was a cash deal and we understand the purchasers will erect a number of substantial business blocks on the property. The fact that large capitalists from outside are daily coming

to Weyburn and purchasing real estate is a good indication of the town's future prospects and there can be little doubt that the town is destined to become one of the large centres in the province.

NEW BUILDING OPERATIONS

(From Weyburn Review, July 25th, 1911).

Although more than one hundred houses have been built this year, it is very near impossible to rent a house here, which speaks well for the growth of the town. Should the town keep up the present rapid growth, it will be the next city in Saskatchewan. This year will see the new \$50,000 post office and \$50,000 collegiate institute under construction, and the completion of the \$85,000 head office building of the Weyburn Security Bank, \$20,000 public school, \$50,000 Rex Fruit Co. warehouse and Eaglesham and Cook's Block. There is a well founded rumor that the Cockshutt Plow Co. intend to make this town their central distributing point. The Massey-Harris Co. also intend erecting a three story building on Third Street, and the McKinnon departmental store intend building a mail order building, the second story being fitted for offices. The Home Bank are opening a branch here, which will make five chartered banks in the town.

WEYBURN REAL ESTATE BOUGHT BY EASTERN CAPITALISTS

(From Weyburn Herald, August 2nd, 1911).

During the past week real estate has been very active, in fact Weyburn people are just awakening to the fact that this city is drawing the attention of the Eastern capitalists

who consider Weyburn real estate one of the best buys in Western Canada. Mr. Proctor, of the well known Toronto real estate firm of W. B. Proctor & Co., closed out a deal Saturday with W. H. McCallum, which puts them in possession of Legal Subdivision 16, which has already been surveyed and contains 384 lots. This subdivision is directly east of the property now being rapidly sold in this vicinity by W. H. McCallum & Co. The reason Mr. Proctor bought to this extent for his company was the fact that they were assured by "the powers that be" that Weyburn would be one of the big centres of the West. Mr. Proctor is to be congratulated on the fact that he has secured for his company one of the most desirable properties in the town of Weyburn.

A PERSONAL EXPERIENCE

Mr. E. B. Brown, one of the editors and owners of the Weyburn Review, gives his experience as follows:—

"Two years ago we purchased the lot and building in which our newspaper plant is now located for \$2,350. The lot is only 25 by 80 feet and the building a one story frame store-room, but I remember we were glad to get it at the time as there was no other available in the town. We thought we were paying a pretty good price for it then, but inside of three weeks after our purchase, we were offered \$4,000 for it and recently we refused \$6,000 for it. It stands to-day just as it did when we purchased it, without additional improvements in the way of new buildings, but the way things look in Weyburn now, we think we will hold on to it ourselves and put up a new building more suitable for our fast increasing business."

Weyburn real estate values have been steadily climbing upward for the past five years. It has had no boom and has experienced no boom conditions. Weyburn has never been advertised outside of its own immediate district to any extent. Its growth has been a natural, steady growth, the result of sure foundations and aggressive enterprise. Weyburn is now only on the eve of its greater development. Within the next five years Weyburn should easily treble its present population and property values.

The Fuel Problem

THERE IS NO FUEL PROBLEM IN WEYBURN. The fuel problem has been solved. Nature solved the fuel problem for Weyburn in pre-historic days. Weyburn has coal in abundance—inexhaustible deposits lie almost at the very gates of the town and are being rapidly developed. A two hours' haul by rail brings the coal from the mines already in operation in the great Souris Coal District into Weyburn.

Saskatchewan's coal area is, according to the Dominion Geological Survey, 7,500 square miles or twenty billion tons of lignite. These lignite bearing areas extend from Roche Percee, Pinto, Bienfait, in the extreme southeastern portion of Saskatchewan, in a north-westerly direction through the Province and coal is found in outcroppings all along this area which is closely adjacent to Weyburn. Many homesteaders in the Weyburn district provide themselves with free fuel from these outcroppings along the river banks. Weyburn is not only assured of abundance of cheap coal for factory and other purposes, but it is destined in the very near future to be one of the most extensive shipping points for coal in Western Canada.



Some of the New Business Blocks

Natural Gas Near Weyburn

THE following telegram sent in to the Winnipeg Free Press under date of August 24th last, from its crop correspondent, reports the discovery of natural gas in the Weyburn district recently in a well of such force and volume as to indicate the presence of vast deposits of natural gas in the immediate Weyburn neighborhood:

"One farm between Weyburn and Estevan, in addition to yielding its owner an excellent crop of wheat and oats, was at the time of my visit producing a supply of natural gas of good quality. This flow, I was told, was struck at a depth of 300 feet while drilling for water. When uncontrolled, it burns with a flame over thirty feet in height, which can be seen at a distance of twelve miles."

This recent discovery of natural gas is within 18 miles of Weyburn, and active preparations are now being made to locate wells closer to the town. All the geological indications point to the fact that Weyburn is in the natural gas belt and it will be only a question of a short time now when Weyburn will have utilized this valuable fuel product for its power, heating and lighting purposes.

THE FUEL PROBLEM HAS BEEN SOLVED FOR ALL TIME IN WEYBURN.

Little Straws Taken at Random from Weyburn's Last Week's Newspapers

"The Weyburn Fruit and Grocery Company is now running in full swing, the manager, Mr. Davidson, who is in charge of this establishment, states that their business is rapidly increasing.

"The Eaglesham & Cook block is nearly completed, and will be one of the finest business blocks, when finished, in the city."

"The Royal Northwest Police Inspector visited Weyburn last week and is looking for a location to build a fine new building which will accommodate several of their men and horses. This will make Weyburn one of the Northwest Police Headquarters, such as Regina."

"Farm lands and city property still continue to change hands. On Thursday of last week no less than sixty land seekers came to Weyburn from Chicago and Minneapolis, and several large deals were put through."

"Real estate men cannot cope with the situation in regard to sites for business openings with the rush of business that is going on. Several new stores and business blocks must be constructed as soon as possible."

"The crops surrounding Weyburn have never been better; wheat will average from 25 to 40 bushels to acre, oats 40 to 50 and flax from 15 to 20."

A Day's Record of Traffic between North and South Weyburn, Over the Bridge and Railway Tracks

(From the Weyburn Review of May 10, 1911)

The account taken at the 3rd Street crossing of the C. P. R. in this city recently showed that in 36 hours **no less than 8,528 people passed over the tracks.** Also that 94 automobiles, 89 cattle, 681 double rigs and 299 single rigs crossed at that point. This, too, was during a season which is comparatively quiet as seeding was at that time in full progress, and the number of farmers coming to town was comparatively small. This account was taken to ascertain whether or not precautionary methods were

necessary to protect life at the railway crossing. We believe that the account will result in the installation of a flag man or gates at the crossing.

The account taken will show another thing to be necessary, and that is that a new bridge across the river at the 3rd Street station will have to be constructed, which has been talked of for some time. When it is actually demonstrated that 8,000 people cross this bridge each day, outside of the teams and vehicles, it seems as though the building of a bridge such as the traffic demands is an absolute necessity."

Weyburn A Judicial District

The Dominion Government has decided to establish three new judicial districts within the Province of Saskatchewan.

The new districts created are **Weyburn**, Swift Current, and Humboldt. The new sheriff of the Weyburn district will be Frank Moffet, of Weyburn; the new sheriff of the Swift Current district will be G. W. Quick, the well-known rancher of Maple Creek. The name of the new

sheriff of Humboldt has not been announced.

The creation of the new judicial district will mean a resident judge in the town of Weyburn, a new court house and the appointment of a sheriff and court clerk. It will make Weyburn one of the important court towns of Saskatchewan, and will add greatly to the prestige and the trade prospects of the town.

PLAN OF WEYBURN

Showing Evanston in direct line of Town's Growth—Note close proximity of EVANSTON to new Schoolhouse, City Park, Central Railway Station and Business Centre of Town.



NOTE.—We are authorized to state that MR. W. H. McCALLUM, Secretary of the BOARD OF TRADE, of Weyburn, Sask., will furnish any additional information desired about WEYBURN, the WEYBURN DISTRICT, or EVANSTON SUBDIVISION.

"There is a tide in the affairs of men which, taken at the flood, leads on to fortune—omitted, all the voyage of their lives is bound in, shallows, and misfortunes."

**The Tide of Progress and Prosperity is at the Gates of Weyburn
Buy Now in Evanston**

And let your Profits Grow with Weyburn's Growth

In presenting to the public a property of the high-class character of Evanston, the International Securities Company's new Subdivision to Weyburn, the company earnestly feels that it is affording an opportunity for investment that is certain to appeal to the sound judgment and confidence of investors who will study the situation carefully and weigh well the facts and figures presented in this circular.

Evanston is situated directly south of the town, within less than three-quarters of a mile from the business centre of Weyburn. The new public school building, a handsome brick structure, costing \$25,000, and which was built to serve the fast developing section of Weyburn situated south of the river, is only eight blocks from the north line of Evanston, and the entire subdivision is within ten minutes walk of the Central Railway station. Within two years' time Evanston will, without doubt, be right in the heart of South Weyburn.

Evanston is superbly situated for residential purposes—smooth and slightly, with an elevation just sufficient to insure purity of air, fine exposure to sun and alluring views of the surrounding country. Gently sloping towards the town, the surface drainage is perfect, and as a base for underground sewer connections it is adapted to gradients towards the main system of disposal that will ensure the best conditions of domestic sanitation.

In short, Evanston is an ideal residential district; close to the town's industrial centres, and adapted as it stands, for immediate building purposes. See letter of the Dominion Land Surveyor in supplemental sheet.

Evanston is in the direct path of the growth of the town, and but few available residential lots are now to be found at moderate prices within the old limits of the townsite. Weyburn is expanding with marvelous strides. A hundred new residences are now in process of erection, aside from the new stores and business blocks.

Our price list of Evanston lots will be found in the plat-sheet which accompanies this circular. No better opportunity to purchase such choice, close-in lots, so near to school, railway and business facilities, at the prices named, are now being offered in any city in Western Canada.

If you are looking for quick returns on your money—if you want to make some of the big money that many are now making in Western Canada—now is your opportunity and Evanston is your place.

This is the first offer of lots in Evanston. This is the time to buy. Don't wait until the choice locations are taken. Don't put off your decision until the golden chance is gone. Get the money-wisdom that makes fortunes, and buy now while the opportunity is knocking on your door, before the tide that leads to fortune passes you by.

Evanston lots are bound to advance rapidly in value. You can't get \$100 lots in any town or city of Western Canada, with a population of 5,000 or over, within a mile and a half to two miles of the business centre. Investigation has demonstrated this to be an absolute fact.

These lots are offered at \$75.00 and \$100.00, with a slight advance for corners—see price list for locations. If you are keeping in touch with Western Canadian town developments, you needn't be told that lots situated as the Evanston lots are and in a town with the future that Weyburn has before it, will go fast at their first offer and realize big profits for the immediate investors.

BUY NOW and watch your money grow.

PUT IT OFF and you will look back in a few months with vain regrets. **OPPORTUNITY**, like time and the tides, waits for no man.

Address all communications and make all remittances to

THE INTERNATIONAL SECURITIES COMPANY, LIMITED,
649 Somerset Building,
Winnipeg, Man.



TAKE NOTICE—

Look over the plat and price-list of lots on separate sheet with this folder—Pick out your choice of lots—Wire to the Company at its expense to have them reserved for you—then fill in the application blank attached to plat-sheet and send it with remittance, by mail, at once to the International Securities Company, Ltd., 649 Somerset Building, Winnipeg, Man.