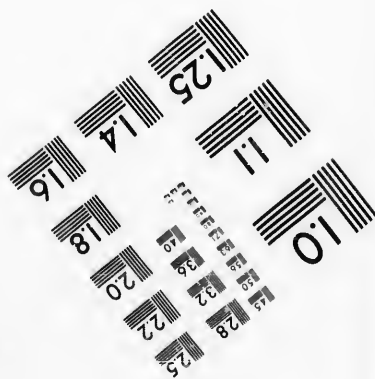
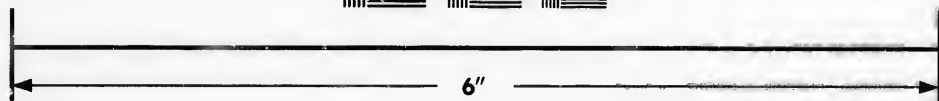
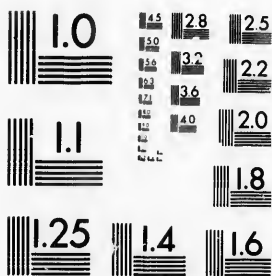


**IMAGE EVALUATION
TEST TARGET (MT-3)**



**Photographic
Sciences
Corporation**

23 WEST MAIN STREET
WEBSTER, N.Y. 14580
(716) 672-4503

**CIHM/ICMH
Microfiche
Series.**

**CIHM/ICMH
Collection de
microfiches.**



Canadian Institute for Historical Microreproductions / Institut canadien de microreproductions historiques

© 1987

Technical and Bibliographic Notes/Notes techniques et bibliographiques

The Institute has attempted to obtain the best original copy available for filming. Features of this copy which may be bibliographically unique, which may alter any of the images in the reproduction, or which may significantly change the usual method of filming, are checked below.

L'Institut a microfilmé le meilleur exemplaire qu'il lui a été possible de se procurer. Les détails de cet exemplaire qui sont peut-être uniques du point de vue bibliographique, qui peuvent modifier une image reproduite, ou qui peuvent exiger une modification dans la méthode normale de filmage sont indiqués ci-dessous.

- | | |
|--|--|
| <input type="checkbox"/> Coloured covers/
Couverture de couleur | <input type="checkbox"/> Coloured pages/
Pages de couleur |
| <input type="checkbox"/> Covers damaged/
Couverture endommagée | <input type="checkbox"/> Pages damaged/
Pages endommagées |
| <input type="checkbox"/> Covers restored and/or laminated/
Couverture restaurée et/ou pelliculée | <input type="checkbox"/> Pages restored and/or laminated/
Pages restaurées et/ou pelliculées |
| <input type="checkbox"/> Cover title missing/
Le titre de couverture manque | <input checked="" type="checkbox"/> Pages discoloured, stained or foxed/
Pages décolorées, tachetées ou piquées |
| <input type="checkbox"/> Coloured maps/
Cartes géographiques en couleur | <input type="checkbox"/> Pages detached/
Pages détachées |
| <input type="checkbox"/> Coloured ink (i.e. other than blue or black)/
Encre de couleur (i.e. autre que bleue ou noire) | <input checked="" type="checkbox"/> Showthrough/
Transparence |
| <input type="checkbox"/> Coloured plates and/or illustrations/
Planches et/ou illustrations en couleur | <input type="checkbox"/> Quality of print varies/
Qualité inégale de l'impression |
| <input type="checkbox"/> Bound with other material/
Relié avec d'autres documents | <input type="checkbox"/> Includes supplementary material/
Comprend du matériel supplémentaire |
| <input checked="" type="checkbox"/> Tight binding may cause shadows or distortion
along interior margin/
La reliure serrée peut causer de l'ombre ou de la
distortion le long de la marge intérieure | <input type="checkbox"/> Only edition available/
Seule édition disponible |
| <input type="checkbox"/> Blank leaves added during restoration may
appear within the text. Whenever possible, these
have been omitted from filming/
Il se peut que certaines pages blanches ajoutées
lors d'une restauration apparaissent dans le texte,
mais, lorsque cela était possible, ces pages n'ont
pas été filmées. | <input type="checkbox"/> Pages wholly or partially obscured by errata
slips, tissues, etc., have been refilmed to
ensure the best possible image/
Les pages totalement ou partiellement
obscurcies par un feuillet d'errata, une pelure,
etc., ont été filmées à nouveau de façon à
obtenir la meilleure image possible. |
| <input type="checkbox"/> Additional comments:/
Commentaires supplémentaires: | |

This item is filmed at the reduction ratio checked below/
Ce document est filmé au taux de réduction indiqué ci-dessous.

10X	12X	14X	16X	18X	20X	22X	24X	26X	28X	30X	32X
				✓							

The copy filmed here has been reproduced thanks to the generosity of:

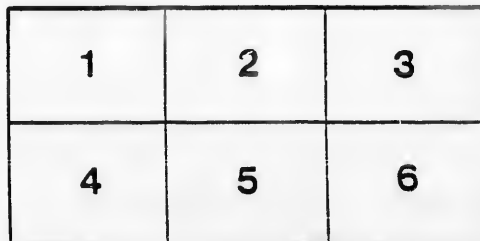
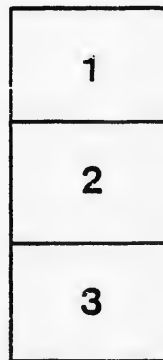
Archives of Ontario
Toronto

The images appearing here are the best quality possible considering the condition and legibility of the original copy and in keeping with the filming contract specifications.

Original copies in printed paper covers are filmed beginning with the front cover and ending on the last page with a printed or illustrated impression, or the back cover when appropriate. All other original copies are filmed beginning on the first page with a printed or illustrated impression, and ending on the last page with a printed or illustrated impression.

The last recorded frame on each microfiche shall contain the symbol \rightarrow (meaning "CONTINUED"), or the symbol ∇ (meaning "END"), whichever applies.

Maps, plates, charts, etc., may be filmed at different reduction ratios. Those too large to be entirely included in one exposure are filmed beginning in the upper left hand corner, left to right and top to bottom, as many frames as required. The following diagrams illustrate the method:



L'exemplaire filmé fut reproduit grâce à la générosité de:

Archives of Ontario
Toronto

Les images suivantes ont été reproduites avec le plus grand soin, compte tenu de la condition et de la netteté de l'exemplaire filmé, et en conformité avec les conditions du contrat de filmage.

Les exemplaires originaux dont la couverture en papier est imprimée sont filmés en commençant par le premier plat et en terminant soit par la dernière page qui comporte une empreinte d'impression ou d'illustration, soit par le second plat, selon le cas. Tous les autres exemplaires originaux sont filmés en commençant par la première page qui comporte une empreinte d'impression ou d'illustration et en terminant par la dernière page qui comporte une telle empreinte.

Un des symboles suivants apparaîtra sur la dernière image de chaque microfiche, selon le cas: le symbole \rightarrow signifie "A SUIVRE", le symbole ∇ signifie "FIN".

Les cartes, planches, tableaux, etc., peuvent être filmés à des taux de réduction différents. Lorsque le document est trop grand pour être reproduit en un seul cliché, il est filmé à partir de l'angle supérieur gauche, de gauche à droite, et de haut en bas, en prenant le nombre d'images nécessaire. Les diagrammes suivants illustrent la méthode.



VOTERS' LIST, 1889.

Municipality of WOLFORD.

SCHEDULE OF POST OFFICES.

ston's Corners, 1 ; Merrickville, 2 ; Bishop's Mills, 3 ; Jasper, 4 ; North Augusta, 5 ; Kilmarnock, 6 ; Whitehurst, 7 ; Smith's Falls, 8 ; Frankville, 9 ; Burritt's Rapids, 10 ; Prescott, 11 ; Oxford Mills, 12 ; Ebbe Mills, 13.

OLLING SUB-DIVISION NO. 1.—Comprising all the Lots in the Township of Wolford, from Lot No. 1 to Lot No. 10, inclusive, in each and every concession.

ART I.—Persons entitled to Vote at both Municipal Elections and Elections to the Legislative Assembly.

ROLL.	NAME.	JURORS.	LOT.	CON.	DESCRIPTION.	P.O.A.
1	Armstrong, James		9 and 10	2	M F and Freeholder	2
5	Armstrong, Wm.		8	1	M F and Freeholder	2
3	Atkinson, Edward	j	8 and 9	2	M F and Freeholder	2
6	Atkinson, Robert	j	7 e half	3	M F and Freeholder	2
4	Arnold, Richard	j	5	3	M F and Freeholder	2
9	Baker, George		10 and 11	1	M F and Freeholder	2
2	Baker, Wm. A.		7 and 8	4	M F and Freeholder	2
7	Bradford, John		4 r	6	M F and Freeholder	3
6	Bradford Joseph	j	4 e quarter	7	M F and Freeholder	3
5	Bigford, Thomas	j	3 w half	7	M F and Freeholder	3
2	Bigford, Edward	j	2 and 3	4 and 5	M F and Freeholder	3
3	Bigford, Benj.	j	1 and 2	5	M F and Tenant	3
0	Buckley, James		5	4	M F and Freeholder	11
1	Boyle, John		5 e half	1	M F and Freeholder	12
3	Bates, John R.		6 and 7	3 and 4	M F and Freeholder	2
5	Boyd, William		1	A	M F and Landholder's Son	2
6	Beaman, Joel B.	j	5 and 6	A and B	M F and Freeholder	2
7	Bennett, Joseph		1 e half and gore	1	M F and Freeholder	2
8	Bennett, Wm.		1 e half and gore	1	M F and Landholder's Son	2
9	Carley, George A.	j	6 and 7	3 and 4	M F and Freeholder	2
6	Carley, Abraham E.		6 f half	3	M F and Landholder's Son	2
9	Carley, Joseph H.	j	9 f e	6	M F and Freeholder	2
8	Crain, Hiram A.	j	10 and 11	2	M F and Freeholder	2
9	Chester, Wm. A.	j	1 and 3	A and B	M F and Freeholder	2
7	Christmann, Geo. E.	j	3 e half	7	M F and Freeholder	3
0	Christmann, Charles		2 f half	6	M F and Tenant	3
71	Davis, Nathan		6	A and B	M F and Freeholder	2
72	Davis, Andrew E.		6	A and B	M F and Landholder's Son	2
73	Davis, Albert H.		6	A and B	M F and Landholder's Son	2
87	Davis, Ralph		1 gore	4	M F and Freeholder	3

POLLING SUB-DIVISION NO. 1.

2

No. on Roll.	NAME.	JURORS.	LOT.	CON.	DESCRIPTION.	P. O. A.	NAME.
190	Davis, Richard T.	J	2, 4 and 5	5	M F and Freeholder	3	Lang, John
189	Doyle, Henry		3	8	M F and Tenant	0	Lane, Alonzo
191	Derruck, George		5	7 and 8	M F and Tenant	1	Lucas, John
192	Devitt, James		9	6 and 7	M F and Freeholder	4	Lundy, Samuel J.
193	Devitt, Edward		9	6 and 7	M F and Householder	5	Lundy, John
210	Earl, John R.	j	w e quarter 7 & 8	4	M F and Freeholder	2	Littlejohn, John
219	Earl, John		f 3	5	M F and Freeholder	3	
220	Earl, George,		f 3	5	M F and Landholder's Son	3	
221	Elliott, Archibald		f 2 and 6	7	M F and Freeholder	2	Maxwell, John
223	Edwards, George		e half 8	7	M F and Landholder's Son	4	Mussell, John H.
224	Edwards, William	j	e half 8	7	M F and Tenant	5	Moxley, George
225	Edwards, Theophilus		w half 8	7	M F and Freeholder	3	Miner, Jesse
238	Fitzgerald, Michael		4	A and B	M F and Tenant	2	Miner, Chester B.
250	Fitzgerald, James		9 and 10	6 and 7	M F and Freeholder	5	Miner, James A.
251	Fitzgerald, Samuel		9 and 10	6 and 7	M F and Landholder's Son	6	Mosher, Benjamin
252	Fitzgerald, Wm.		9 and 10	6 and 7	M F and Landholder's Son	7	Mosher, David C.
259	Gregg, Wm. J.		1 a 2	A	M F and Freeholder	2	Minish, James
273	Graham, George	j	s e half 2	7	M F and Tenant	2	Minish, Archibald
274	Gibson, Wm.		7	7	M F and Freeholder	7	
275	Gibson, James		e half 10	6	M F and Freeholder	13	McIntosh, William
276	Gibson, Wm. W.		e half 10	6	M F and Landholder's Son	6	McFadden, Robert
280	Hoople, Alonzo		j	gore	A and B	M F and Freeholder	2
281	Houliston, Robert	1 and 2		1	M F and Freeholder	3	McDonald, George
278	Hart, James	4		3	M F and Freeholder	0	McDonald, Henry
305	Hart, Samuel	6		6	M F and Freeholder	27	McDonald, Wm.
310	Hart, Samuel	7		5	M F and Freeholder	22	McDonald, John
306	Hare, Thomas	j	w quarter 4	7	M F and Freeholder	23	McLellan, Francis
312	Halnan, Michael		1 and 2 gore	3	M F and Freeholder	25	McCoy, John
313	Halnan, Thomas		1 gore	2	M F and Freeholder	24	McCoy, Wm. J.
320	Johnston, Robert	j	w half 3	A	M F and Freeholder	2	O'Neill, Felix
321	Johnston, Henry		w half 3	A	M F and Landholder's Son	5	O'Neill, Cyrus
329	Jones, Thomas		6	8	M F and Freeholder	6	Oakes, Thomas
330	Jones, Wm.		7	8	M F and Freeholder	5	Oakes, Wm. sr.
332	Kyle, Patrick	j	f half 10	4	M F and Freeholder	3	Oakes, Wm. jr.
333	Kyle, Francis		r 10	3	M F and Freeholder	60	Phillips, George
336	Kelly, Alexander		w quarter 8	4	M F and Landholder's Son	21	Phillips, Thomas
341	Kelly, Michael		w quarter 8	4	M F and Freeholder	23	Pelton, David
345	King, John		j 8 and 9	5	M F and Freeholder	79	Pritchard, Joseph
346	Kirkland, Wm. T.		e half 8	6	M F and Freeholder	80	Powell, Wm.

POLLING SUB-DIVISION NO. 1.

3

P. O. A.	NAME.	JURORS.	LOT.	CON.	DESCRIPTION.	P. O. A.
3 9	Lang, John		e half 8	3	M F and Freeholder	2
3 0	Lane, Alonzo	j 4		B	M F and Freeholder	2
3 1	Lucas, John			A and B	M F and Freeholder	2
3 4	Lundy, Samuel J.	j 2		6	M F and Freeholder	3
3 5	Lundy, John	j 6		5	M F and Freeholder	3
6	Lundy, James	j e half 3		6	M F and Freeholder	3
7	Lundy, Hugh	j e half 3		6	M F and Landholder's Son	3
2 8	Littlejohn, John	j 9		7	M F and Freeholder	3
3 2	Maxwell, John		10	5	M F and Freeholder	2
3 4	Mussell, John H.	j 6		2	M F and Freeholder	2
3 5	Moxley, George	j 5 and 6		2	M F and Freeholder	2
3 3	Miner, Jesse	w half 2		A and B	M F and Freeholder	2
4	Miner, Chester B.	w quarter 1		B	M F and Freeholder	2
5	Miner, James A.	e half 2		A and B	M F and Landholder's Son	2
2 6	Mesher, Benjamin	w half 3		1	M F and Freeholder	2
5 7	Mosher, David C.	e half 6		1	M F and Landholder's Son	2
5 8	Minish, James	f half 5		6	M F and Freeholder	3
5 9	Minish, Archibald	f half 5		6	M F and Landholder's Son	3
2 2	McIntosh, William		5	A and B	M F and Freeholder	2
2 7	McFadden, Robert		3 and 4	8	M F and Freeholder	3
3 0	McDonald, Alexander	j 4		6	M F and Freeholder	3
13 1	McDonald, George	j e half 3		6	M F and Freeholder	3
13 6	McDonald, Henry	j 4		6	M F and Freeholder	3
17	McDonald, Wm.	j 4		6	M F and Freeholder	3
22	McDonald, John	e half 3		6	M F and Landholder's Son	3
23	McLellan, Francis		7	7	M F and Freeholder	3
25	McCoy, John		7	7	M F and Freeholder	3
24	McCoy, Wm. J.	j 4		7	M F and Freeholder	3
3 2						
340	Nelson, William		4	1	M F and Tenant	2
241	Nelson, Joseph		e half 9	1	M F and Landholder's Son	2
2						
34	O'Neill, Felix		1	A	M F and Freeholder	2
55	O'Neill, Cyrus		1	A	M F and Landholder's Son	2
56	Oakes, Thomas J.	r 5		6	M F and Freeholder	3
57	Oakes, Wm. sr.	r 6		6	M F and Freeholder	3
38	Oakes, Wm. jr.	r 6		6	M F and Landholder's Son	3
60	Phillips, George	j 6 and 9		4	M F and Freeholder	2
21	Phillips, Thomas	j 10		4 and 5	M F and Freeholder	2
23	Pelton, David	j gore		A and B	M F and Freeholder	10
79	Pritchard, Joseph	w half 5		5	M F and Freeholder	3
80	Powell, Wm.	8 and 8		7 and 8	M F and Freeholder	5
81	Percival, Roger	9		8	M F and Freeholder	5
82	Pame, Edward	9 and 10		7 and 8	M F and Freeholder	5

POLLING SUB-DIVISION NO. 2.—Comprising all the Lots in the Township of Wolford, from Lot No. 11 to Lot No. 10, inclusive, in each and every concession.

PART I.—Persons entitled to Vote at both Municipal Elections and Elections to the Legislative Assembly.

Roll.	NAME.	JURORS.	LOT.	CON.	DESCRIPTION.	P. O. A.
6	Atkinson, Thomas	j	18	2	M F and Freeholder	2
2	Atkinson, George	j	w half 14	4	M F and Freeholder	2
10	Alberry, Samuel		13	7	M F and Freeholder	5
11	Alberry, Alfred		13	7	M F and Landholder's Son	5
12	Alberry, Norton		r 11	6	M F and Freeholder	5
13	Armstrong, Wm. sr.	f	quarter 11	3	M F and Freeholder	2
14	Armstrong, Wm. jr.	j	f $\frac{1}{2}$ e $\frac{1}{2}$ 13 & 14	3	M F and Freeholder	2
15	Armstrong, John	j	f 3-quarters 12	3	M F and Freeholder	2
25	Brown, Robert		w half 17	5	M F and Freeholder	2
99	Brown, Wm. H.	j	e half 14	6	M F and Freeholder	2
100	Brown, Robert		e half 14	5	M F and Freeholder	2
101	Brown, Hugh S.		e half 15	5	M F and Landholder's Son	2
102	Baldwin, Eli		w quarter 15	6	M F and Freeholder	2
103	Baldwin, Joel B.		e quarter w $\frac{1}{2}$ 15	6	M F and Freeholder	2
104	Baldwin, John E.		e quarter w $\frac{1}{2}$ 15	6	M F and Landholder's Son	2
26	Brennan, Pierce		12	1	M F and Freeholder	2
27	Brennan, Edward		12	1	M F and Landholder's Son	2
28	Baker, Thomas	f	$\frac{1}{2}$ e $\frac{1}{4}$ 12 & w $\frac{1}{2}$ 11	2	M F and Freeholder	2
29	Baker, John H.	f	$\frac{1}{2}$ e $\frac{1}{4}$ 12 & w $\frac{1}{2}$ 11	1	M F and Landholder's Son	2
30	Baker, Henry	f	$\frac{1}{2}$ e $\frac{1}{4}$ 12 & w $\frac{1}{2}$ 11	2	M F and Landholder's Son	2
31	Baker, Thomas E.	f	$\frac{1}{2}$ e $\frac{1}{4}$ 12 & w $\frac{1}{2}$ 11	1	M F and Landholder's Son	2
32	Baker, Samuel L.	f	$\frac{1}{2}$ e $\frac{1}{4}$ 12 & w $\frac{1}{2}$ 11	2	M F and Landholder's Son	2
33	Boyd, John	j	w half 14	A	M F and Freeholder	2
34	Boyd, Richard		15	A	M F and Freeholder	2
37	Burchill, Wm. J.		16	A	M F and Landholder's Son	2
38	Burchill, Samuel	j	r 15	A	M F and Freeholder	2
39	Burchill, Thomas	j	18	1	M F and Freeholder	2
40	Burchill, John sr.	j	19	1	M F and Freeholder	2
41	Burchill, John jr.	j	19	1	M F and Landholder's Son	2
42	Burchill, Robert		19	1	M F and Landholder's Son	2
43	Begley, Robert		17 and 18	2	M F and Freeholder	1
49	Barry, Watson		e 18	3	M F and Freeholder	1
44	Beamish, John		15	2	M F and Freeholder	2
45	Beamish, George		15	2	M F and Landholder's Son	2
51	Bissell, George	j	19	2	M F and Freeholder	2
72	Brown, Hugh sr.		17 and 18	4	M F and Freeholder	1
75	Barnett, John	j	19	4 and 5	M F and Freeholder	1
76	Barnett, Wm. J.	j	16	5	M F and Freeholder	1
81	Barber, Eluathan		f 18	5	M F and Landholder's Son	1
87	Baker, Hiram		18	7	M F and Freeholder	5
88	Baker, Ephraim	j	18	6	M F and Tenant	5
98	Bradford, Deming	r	14	6	M F and Landholder's Son	3
110	Cotnam, James	j	w half 15	4	M F and Freeholder	2

POLLING SUB-DIVISION NO. 2.

No. on Roll.	NAME.	JURORS.	LOT.	CON.	DESCRIPTION.	NAME.
111	Carley, Wm. W.	j	e half 11	4	M F and Freeholder	18 Hare, George
112	Carley, Thomas	e	half 12	4	M F and Freeholder	20 Hare, Simon
113	Carley, Wm.	e	half 12	4	M F and Landholder's Son	
114	Carley, Thomas L.	e	half 12	4	M F and Landholder's Son	
115	Carley, Joseph sr.	w	half 12	4	M F and Freeholder	16 Jakes, Samuel
117	Carley, Joseph S.	j	r 11	2	M F and Freeholder	10 Joynt, C. C.
155	Chockley, Richard	w	half 14	7	M F and Freeholder	
158	Colborne, Henry	13		6 and 7	M F and Freeholder	
120	Cross, Alanson	j	w half 16	3	M F and Freeholder	4 Kelly, James
121	Cross, Herbert	j	r e quarter 17	2	M F and Freeholder	6 Kelly, John
122	Cross, John	r	quarter 17	3	M F and Landholder's Son	7 Kenny, Edward
123	Cross, Lonson	r	quarter 17	3	M F and Freeholder	8 Kenny, Patrick
					M F and Landholder's Son	9 King, Joseph
167	Dever, John	13		2	M F and Freeholder	10 Kerford, Wm.
168	Dever, Wm.	13 and 14		2 and 3	M F and Freeholder	11 Knapp, Joseph
174	Dever, James	14		2	M F and Freeholder	12 Knapp, James
169	Driscoll, Daniel	j	13 and 14	A	M F and Freeholder	
170	Driscoll, James	j	15 and 16	1	M F and Freeholder	
176	Doyle, Simon	e	half 16	3	M F and Freeholder	13 Lewis, James
177	Doyle, Michael	e	half 16	3	M F and Freeholder	
178	Doyle, John	j	w half 15	3	M F and Landholder's Son	
194	Doyle, Wm. J.	j	e half 13	5	M F and Freeholder	14 Miskelly, Alex
188	Dool, Joseph	j	w half 13	5	M F and Freeholder	15 Moffatt, Wm. J.
					M F and Freeholder	16 Moffatt, Andre
197	Empey, Alexander	j	19	3	M F and Freeholder	17 Mills, Joseph V
226	Edwards, Jeremiah	j	e half 15	6	M F and Tenant	18 Maxwell, Thom
						19 Maxwell, Gordo
228	Foy, Charles	w	quarter 14	2	M F and Freeholder	20 McIntyre, Dani
229	Friel, James	r	13	1	M F and Freeholder	21 McIntyre, Henr
230	Forbes, Thomas sr.	r	11	A	M F and Freeholder	22 McIntyre, Wm.
231	Forbes, Thomas jr.	r	11	A	M F and Landholder's Son	23 McIntyre, Samu
247	Fitzgerald, Edward	j	19 and 20	6	M F and Freeholder	24 McIntyre, Arch
253	Fitzgerald, John	r	11	6	M F and Freeholder	25 McKim, James
						26 McKim, Sidney
255	Gardner, Hugh, H.	18		5	M F and Freeholder	
269	Gardner, Richard	r	17	5	M F and Freeholder	27 O'Donnell, Hugh
270	Gardner, Wesley R.	r	18	5	M F and Landholder's Son	28 O'Donnell, Josep
271	Gardner, Thomas	j	f half 18	6	M F and Freeholder	29 O'Brien, Patrick
272	Gardner, Wm. H.	j	f half 19	6	M F and Freeholder	30 O'Neil, James
277	Gardner, John	17		6	M F and Freeholder	
256	Garrett, Robert	12 and 13		3	M F and Freeholder	31 Putnam, Hymen
257	Garrett, George C.	12 and 13		3	M F and Freeholder	32 Putnam, Frederi
258	Goven, Matthew	11 and 13		1	M F and Landholder's Son	33 Parks, Wm.
260	Greville, Joseph	19		3	M F and Freeholder	
279	Henry, James	j	15	1 and 2	M F and Freeholder	34 Rickey, John
307	Hare, Robert	j	w half 16	6	M F and Freeholder	35 Rickey, Abraham
						36 Roach, James

POLLING SUB-DIVISION NO. 2.

No. on Roll.	NAME.	JURORS.	LOT.	CON.	DESCRIPTION.
488	Roach, Peter		r w 12	2	M F and Freeholder
489	Robinson, Ezra	j	19	2	M F and Freeholder
505	Rowsome, Wm. sr.		w half 15	7	M F and Freeholder
506	Rowsome, Wm. jr.		w half 15	7	M F and Landholder's S
511	Stephens, Robert		r 16	4	M F and Landholder's S
515	Smith, Alonzo		19 and 20	1	M F and Freeholder
516	Smith, Lester H.	j	19	2	M F and Freeholder
527	Sunderland, Benj.		19 and 20	7	M F and Freeholder
528	Sunderland, C. H.		19 and 20	7	M F and Landholder's S
530	Sunderland, W. A.	j	18 and 19	8	M F and Freeholder
531	Stency, Joseph		11, 12 and 13	8	M F and Freeholder
533	Snowden, Robert		e quarter 14	6	M F and Freeholder
529	Sinnot, Richard		r 19	7	M F and Freeholder
543	Turner, Thomas sr.		w half 15	5	M F and Freeholder
544	Turner, Thomas jr.		w half 15	5	M F and Landholder's S
545	Turner, Richard		r 16	5	M F and Freeholder
550	Wilmer Samuel	j	e half 16	5	M F and Freeholder
551	Weddis, Adam	j	10 and 11	3	M F and Freeholder
558	Wilson, Archibald	j	r quarter 12	A	M F and Freeholder
559	Wilson, Matthew	j	f quarter 12	A	M F and Freeholder
563	Wickwire, Charles		r e quarter 18	2	M F and Freeholder
585	Webster, Cyrus	j	17 and 18	6	M F and Freeholder
586	Webster, Norman		r 17 and 18	6	M F and Freeholder
587	Webster, Wm. H.		17 and 18	7	M F and Landholder's S

PART II.—Persons entitled to Vote at Municipal Elections only.

23	Burchill, Sarah		w half 15	A	M F and Freeholder
50	Parry, Elizabeth		w 18	3	M F and Freeholder
52	Bissell, Eliza		19	2	M F and Freeholder
462	Parks, Sarah A.		r 18	1	M F and Freeholder
510	Stephens, Ann		r 16	4	M F and Freeholder

PART III.—Persons entitled to Vote at Election to the Legislative Assembly only.

NONE.

POLLING SUB-DIVISION NO. 2.
Wolford, from
PART I.—Persons entitled to Vote at Legislative A

NA
Arnold, John
Arnold, Wm.
Burritt, Edm
Brown, H. M
Brown, Georg
Brown, Livin
Brown, Wm.
Ballantyne, J
Brundige, W
Brundige, Ge
Beamish, Ric
Bates, Thom
Bates, Wm: E
Baldwin, Sher
Barber, Geor
Bradford, Ho
Bannerman, I
Cross, Norman
Cross, Wm.
Cross, Lewis
Cross, Wm. H
Cross, George
Campbell, Levi
Crampton, San
Chester, Thon
Chester, H. N.
Cannon, W. S.
Carnochan, Ed
Carnochan, Go
Chalmers, Sim
Chalmers, Wm
Coolidge, Harr
Coolidge, John
Corcoran, Jame
Corcoran, John

79 Davis, John C.
80 Davis, Ransom
81 Devitt, Thomas
83 Draper, Albert
85 Dewey, Jabez

POLLING SUB-DIVISION NO. 3.

PTION.

POLLING SUB-DIVISION NO. 3.—Comprising all the Lots in the Township of Wolford, from Lot No. 20 to Lot No. 30, inclusive, in Cons. A. B. C. D. & Nos. 1 & 2.

ART I.—Persons entitled to Vote at both Municipal Elections and Elections to the Legislative Assembly.

	NAME.	JURORS	LOT.	CON.	DESCRIPTION.	F. O. A.
holder's So	1 Arnold, John B.	j	half 24	2	M F and Freeholder	1
holder	8 Arnold, Wm. H.	j	quarter 26	2	M F and Freeholder	1
holder's So	56 Burritt, Edmund	j	25	2	M F and Freeholder	1
holder	58 Brown, H. M.	j	25	1	M F and Freeholder	1
holder	60 Brown, George	j	24	1	M F and Freeholder	1
holder	62 Brown, Livins	j	22 and 23	1	M F and Freeholder	1
holder	70 Brown, Wm.	j	25	2	M F and Freeholder	1
holder	62 Ballantyne, John	j	23 and 25	1	M F and Freeholder	1
holder	65 Brundige, Wm.	j	30	1	M F and Freeholder	4
holder's So	77 Brundige, George	j	30	1	M F and Freeholder	4
holder	75 Beamish, Richard	j	26	1	M F and Tenant	4
holder	78 Bates, Thomas	j	27	1	M F and Freeholder	1
holder	77 Bates, Wm: H.	j	28	1	M F and Freeholder	4
holder	79 Baldwin, Sherman	j	29	2	M F and Freeholder	4
holder	71 Barber, George	j	25	2	M F and Freeholder	4
holder	66 Bradford, Howard	j	30	1	M F and Freeholder	4
holder	69 Bannerman, Robert	j	30	1	M F and Tenant	4
holder	68 Cross, Norman	j	30	1	M F and Tenant	4
holder's So	74 Cross, Wm.	j	29	1	M F and Freeholder	4
holder	77 Cross, Lewis	j	27	1	M F and Freeholder	1
holder	79 Cross, Wm. H.	j	24	2	M F and Freeholder	1
holder	64 Cross, George	j	30	1	M F and Freeholder	4
holder	70 Campbell, Levi	j	25	2	M F and Freeholder	1
holder	51 Crampton, Samuel	j	30	1	M F and Tenant	4
holder	62 Chester, Thomas	j	30	1	M F and Freeholder	4
holder	63 Chester, H. N.	j	30	1	M F and Freeholder	4
holder	65 Cannon, W. S.	j	30	1	M F and Tenant	4
holder	74 Carnochan, Edward	j	21	2	M F and Freeholder	4
holder	75 Carnochan, Gordon	j	21	2	M F and Freeholder	1
holder	77 Chalmers, Simon	j	28 and 29	A	M F and Landholder's Son	1
holder	78 Chalmers, Wm.	j	28 and 29	A	M F and Freeholder	4
holder	29 Coolidge, Harrison	j	30	A	M F and Landholder's Son	4
holder	31 Coolidge, John H.	j	30	A	M F and Freeholder	4
holder	35 Corcoran, James	j	26	1	M F and Landholder's Son	4
holder	36 Corcoran, John	j	26	1	M F and Freeholder	4
holder	79 Davis, John C.	j	23	2	M F and Freeholder	1
holder	80 Davis, Ransom A.	j	23	2	M F and Landholder's Son	1
holder	81 Devitt, Thomas	j	24	2	M F and Freeholder	1
holder	83 Draper, Albert C.	j	25	2	M F and Freeholder	1
holder	85 Dewey, Jabez	j	30	1	M F and Freeholder	4

No. on Roll.	NAME.	JURORS.	LOT.	CON.	DESCRIPTION.	NAME.
196	Easton, Hiram		25	2	M F and Freeholder	Maitland, Albert
203	Easton, Charles L.		30	2	M F and Landholder's Son	Maitland, Malcol
204	Easton, George B.		27	1	M F and Landholder's Son	Maitland, Aaron
205	Easton, Wm. H.		27	1	M F and Landholder's Son	Mills, Wesley W.
206	Easton, George	j	24	2	M F and Freeholder	Mills, Wilbert
199	Edmunds, Silas	j	24 and 25	B	M F and Freeholder	Moore, James
200	Edmunds, Lorenzo		24 and 25	B	M F and Landholder's Son	Moore, Wilham J
201	Edmunds, Wesley	j	26	A	M F and Freeholder	Moore, James A.
207	Everetts, M. K.	j	24	2	M F and Tenant	Magure, Andrew
254	Foster, Andrew		30	1	M F and Freeholder	McGrath, Sidney
232	Ferguson, Richard	j	26 and 27	B	M F and Freeholder	McCarthy, John
233	Ferguson, John H.	j	26 and 27	A and B	M F and Freeholder	McCaw, William
235	Ferguson, George	j	26	2 and 3	M F and Freeholder	McCrum, Edward
237	Fortune, Wm.		24	2	M F and Freeholder	McCrum, James
292	Fulford, James H.		23	2	M F and Freeholder	McKim, Richard
						McMartin, George
263	Graham, Samuel	j	29	A	M F and Freeholder	
264	Graham, Wm.		29 and 30	B	M F and Freeholder	Newsome, William
265	Graham, Joseph C.		29 and 30	B	M F and Landholder's Son	Newsome, Albert
						Nevens, Robt. s
						Nevens, John
283	Haskin, Hymenus	j	22	2	M F and Tenant	Nevens, Albert
284	Haskin, James E.		22	2	M F and Landholder's Son	Nevens, Robert
285	Hutton, George	j	23 and 24	A and 1	M F and Freeholder	Nichol, Alexand
287	Halliday, Wm.		28	A	M F and Freeholder	
288	Halliday, Wm. W.		28	A	M F and Landholder's Son	
291	Hunter, Robert		23	2	M F and Tenant	Olmstead, Ambr
293	Hunt, Edward A.	j	24	2	M F and Freeholder	
294	Hunt, Lorenzo E.		24	2	M F and Landholder's Son	
315	Hunt, John		30	1	M F and Freeholder	Pearson, Simon
295	Hunt, Heber, D.		24	2	M F and Freeholder	Price, Thomas
297	Humphrey, Francis		25	2	M F and Freeholder	Phillips, John
314	Huffman, D. E.		30	1	M F and Freeholder	Patterson, Adell
495	Hislop, Robert	j	27	1	M F and Tenant	Putnam, Hope
322	Johnston, Richard	j	29 and 30	B	M F and Freeholder	Rathwell Willia
323	Johnston, John W.	j	29 and 30	B	M F and Freeholder	Richards, Christ
324	Johnston, Robert W.		29 and 30	B	M F and Landholder's Son	Rose, Charles
331	Johnston, Jonathan		28	2	M F and Freeholder	
						Street, John
339	Kerr, Joseph	j	28 and 29	A	M F and Freeholder	Stokes, Thomas
						Sterns, Jonas
						Shatford, John
						Spry, Bruce
352	Liddell, James		30	1	M F and Freeholder	
353	Lemox, John		28	1	M F and Freeholder	
371	Lemox, James	j	30	1	M F and Freeholder	
369	Lehigh, Franklin		30	1	M F and Freeholder	Tallman, Charle

POLLING SUB-DIVISION NO. 3.

CON.	NAME.	JURORS	LOT.	CON.	DESCRIPTION.	P. O. A.
er	Maitland, Albert	j	24, 25 and 26	A	M F and Tenant	1
er's Son	Maitland, Malcolm	j	29	A	M F and Freeholder	4
er's Son	Maitland, Aaron	j	23 and 24	B	M F and Tenant	6
er's Son	Mills, Wesley W.	j	30	D	M F and Freeholder	8
er	Mills, Wilbert	j	30	1	M F and Freeholder	4
er	Moore, James	j	w half 28	1	M F and Freeholder	4
er's Son	Moore, William J.	j	w half 28	1	M F and Landholder's Son	4
er	Moore, James A.	j	w half 28	1	M F and Landholder's Son	4
	Maguire, Andrew	j	20	2	M F and Tenant	1
er	McGrath, Sidney	j	24 and 25	A	M F and Freeholder	1
er	McCarthy, John	j	25	B	M F and Freeholder	4
er	McCaw, William R.	j	26	A	M F and Freeholder	4
er	McCrum, Edward	j	30	1	M F and Freeholder	4
er	McCrum, James	j	30	1	M F and Freeholder	4
er	McKim, Richard	j	30	1	M F and Freeholder	4
	McMartin, George	j	25	1	M F and Tenant	1
er	Newsome, William A.	j	23 and 24	B	M F and Freeholder	6
er's Son	Newsome, Albert	j	26 and 27	B	M F and Tenant	6
	Nevens, Robt. sr.	j	25	2	M F and Freeholder	1
	Nevens, John	j	24	2	M F and Freeholder	1
	Nevens, Albert	j	24	2	M F and Landholder's Son	1
er's Son	Nevens, Robert jr.	j	30	1	M F and Tenant	4
er	Nichol, Alexander	j	24	2	M F and Freeholder	1
er's Son	Olmstead, Ambrose	j	30	1	M F and Freeholder	4
er	Pearson, Simon	j	20 and 21	2	M F and Freeholder	1
er	Price, Thomas	j	23	2	M F and Freeholder	1
er	Phillips, John	j	29	A	M F and Freeholder	4
er	Patterson, Adelbert	j	27	2	M F and Freeholder	4
	Putnam, Hope	j	24	2	M F and Landholder's Son	1
er	Rathwell William	j	28	1	M F and Freeholder	4
er	Richards, Christopher	j	30	1	M F and Freeholder	4
er's Son	Rose, Charles	j	21	2	M F Tenant	1
er	Street, John	j	28	A	M F and Freeholder	4
er	Stokes, Thomas	j	30	1	M F and Freeholder	4
er	Sterns, Jonas	j	30	1	M F and Freeholder	4
er	Shatford, John	j	24 and 25	1	M F Tenant	1
er	Spry, Bruce	j	21	2	M F Tenant	1
er	Tallman, Charles	j	24 and 25	B	M F and Freeholder	6

No. on Roll.	NAME.	JURORS.	LOT.	CON.	DESCRIPTION.	P. O. A.
537	Tallman, Stis		24 and 25	B	M F and Landholder's Son	6
538	Tallman, Francis		24 and 25	B	M F and Landholder's Son	6
539	Tolman, Ransom	j	29	1	M F and Freeholder	4
546	Tweedy, John	j	24	2	M F and Tenant	1
547	Tweedy, Charles		24	2	M F and Tenant	1
565	Weir, John K.	j	24	2	M F and Freeholder	1
566	Willoughby, Samuel		24	1	M F and Freeholder	1
567	Willoughby, Geo. C.		25	1	M F and Landholder's Son	1
568	Willoughby, Abraham	j	29 and 30	C	M F and Freeholder	8
296	Willoughby, Omar A.		24	2	M F and Tenant	1
571	Warren, Beechan	j	f quarter 26	2	M F and Freeholder	1
573	Warren, Matthew	r	28	2	M F and Landholder's Son	1
575	Warren, John	j	24	2	M F and Freeholder	1
578	Watts, John sr.		24	2	M F and Freeholder	1
579	Watts, John jr.		27	2	M F and Landholder's Son	1
577	Watts, Hiram	j	25	2	M F and Freeholder	1
576	Watts, Wm. H.	j	24	2	M F and Freeholder	1

PART II.—Persons entitled to Vote at Municipal Elections only.

55	Bates, Annie		25	2	M F and Freeholder	1
64	Barber, Emma		25 and 26	A and B	M F and Tenant	1
130	Coolidge, Caroline		30	A	M F and Freeholder	4
132	Caul, Eunice		30	1	M F and Freeholder	12
165	Carr, Mary A.		30	1	M F and Freeholder	4
198	Eberts, Annie		24	2	M F and Freeholder	1
202	Easton, Hester	r	29	2	M F and Freeholder	1
234	Francis, Rachel		24	B	M F and Freeholder	6
289	Haskin, Minerva		24	B	M F and Freeholder	6
340	King Mrs. W. J.		25	2	M F and Freeholder	1
354	Lynch, Susannah		30	1	M F and Freeholder	4
370	Lenax, Annie		30	1	M F and Freeholder	4
466	Pearson, Olive		20	2	M F and Freeholder	1
474	Putnam, Elizabeth		24	2	M F and Freeholder	1
494	Ralph, Laura	j	30	1	M F and Freeholder	1

PART III.—Persons entitled to Vote at Election to the Legislative Assembly only.

NONE.

POLLING SUB-
Wolford, from
PART I.—Person
Legislative A

No. on Roll.	NAME.
--------------	-------

9 Arnold, Rich

53 Bissell, Ruf
57 Barker, Joh
73 Bates, Nath
74 Bates, Peter
82 Bates, Robe
77 Baker, Geor
78 Baker, Thor
79 Baker, Sam
80 Barber, Nin
83 Begley Johr
84 Begley, Joh
86 Begley, Ale
89 Bolton, Ben
90 Baldwin, Le
91 Baldwin, W
491 Best, Samu

138 Concoran, M
141 Conner, Tho
142 Conner, Geo
143 Conner, Ro
145 Conner, Jan
146 Conner, Sa
147 Conner Jac
148 Conner, Joh
144 Carley, Wil
149 Courtney, V
150 Crummy, T
151 Crummy, J
153 Campbell, V

185 Dineen, Pe
186 Dunn, A. T

208 Evertts, My
209 Evertts, Mi
211 Empey, Cha
212 Empey, Th
213 Empey, Sa
214 Empey, Ar

POLLING SUB-DIVISION NO. 4.—Comprising all the Lots in the Township of Wolford, from Lot No. 20 to Lot No. 30, inclusive, in Cons. Nos. 3, 4, 5, 6, 7 and 8.

PART I.—Persons entitled to vote at both Municipal Elections and Elections to the Legislative Assembly.

No. on Roll.	NAME.	JURORS.	LOT.	CON.	DESCRIPTION.	P. O. A.
9	Arnold, Richard		29 and 30	4	M F and Freeholder	1
53	Bissell, Rufus	j	22	3	M F and Freeholder	1
57	Barker, John	j	22	3	M F and Tenant	1
73	Bates, Nathaniel		20	5	M F and Freeholder	1
74	Bates, Peter		20	5	M F and Landholder's Son	1
82	Bates, Robert E.		27	6	M F and Freeholder	1
77	Baker, George		e half 21	4	M F and Freeholder	1
78	Baker, Thomas		r w 20	4	M F and Landholder's Son	1
79	Baker, Samuel		r w 20	4	M F and Landholder's Son	1
80	Barber, Ninian		r 20	3	M F and Freeholder	1
83	Begley John		23	5	M F and Freeholder	1
84	Begley, Johnston		23	5	M F and Landholder's Son	1
86	Begley, Alexander		23	4	M F and Freeholder	8
89	Bolton, Benjamin		23	8	M F and Freeholder	5
90	Baldwin, Levi		22	8	M F and Freeholder	5
91	Baldwin, William		20	8	M F and Freeholder	5
491	Bost, Samuel	j	w half 23	3	M F and Tenant	1
138	Concoran, Michael	j	29	3	M F and Freeholder	1
141	Conner, Thomas		23	4	M F and Freeholder	1
142	Conner, George H.		23	4	M F and Landholder's Son	1
143	Conner, Robert		27	5	M F and Freeholder	1
145	Conner, James		f three-quarter 25	5	M F and Freeholder	1
146	Conner, Samuel		f three-quarter 25	5	M F and Landholder's Son	1
147	Conner Jacob		f three-quarter 25	5	M F and Landholder's Son	1
148	Conner, John		25	5	M F and Freeholder	1
144	Carley, William	j	e half 26	5	M F and Freeholder	1
149	Courtney, William W.	j	24	6	M F and Freeholder	1
150	Crummy, Thomas	j	26	6	M F and Freeholder	1
151	Crummy, James	j	26	6 and 7	M F and Freeholder	1
153	Campbell, William		30	7	M F and Freeholder	1
185	Dineen, Peter		24	4	M F and Landholder's Son	1
186	Dunn, A. T.		22	7	M F and Freeholder	5
208	Evertts, Myron A.		24	3	M F and Landholder's Son	1
209	Evertts, Milton W.		24	3	M F and Landholder's Son	1
211	Empey, Charles W.	j	19 and 20	4	M F and Freeholder	1
212	Empey, Thomas		w half 26	5	M F and Freeholder	1
213	Empey, Sanfield		e half 26	5	M F and Landholder's Son	1
214	Empey, Artemus		27	5	M F and Landholder's Son	1

No. on Roll.	NAME.	JURORS	LOT.	CON.	DESCRIPTION.	P. O. A.
215	Empey, Joseph	j s e 22		4	M F and Freeholder	1
216	Empey, Jonathan	j 26		4	M F and Freeholder	1
217	Empey, Thomas sr	24		5	M F and Freeholder	1
326	Empey, William W.	27 and 28		4	M F and Landholder's Son	1
239	Ferguson, John	21 and 22		3	M F and Freeholder	1
240	Ferguson, George H.	e quarter 23		3	M F and Landholder's Son	1
241	Ferguson, Thomas	30		4	M F and Freeholder	1
242	Ferguson, Robert	29		5	M F and Tenant	1
243	Ferguson, George W.	30		5	M F and Freeholder	1
244	Ferguson, Isaac	30		5	M F and Freeholder	1
145	Fleming, John	28		6	M F and Freeholder	1
246	Fleming, William J.	j 29		6	M F and Freeholder	1
266	Garland, Richard	j e half 25		4	M F and Freeholder	1
267	Garland, William H.	e quarter 24		4	M F and Landholder's Son	1
268	Garland, Thomas	w half 25		4	M F and Freeholder	1
282	Hulbert, Freeman	j f 20		3	M F and Freeholder	1
289	Hannah, William sr.	26		3	M F and Freeholder	1
290	Hannah, William jr.	j 30		3	M F and Freeholder	1
298	Hannah, Robert	e half 29		4	M F and Freeholder	1
299	Hannah, Harvey	e half 29		4	M F and Landholder's Son	1
300	Hannah, Levi	e half 29		4	M F and Landholder's Son	1
301	Hennessey, Thomas	28		8	M F and Freeholder	7
302	Hinton, Richard	29 and 30		8	M F and Freeholder	7
303	Hicks, Charles	w half 21		7	M F and Freeholder	5
304	Hare, Richard	j e half 20		7	M F and Freeholder	5
218	Hart, Maurice	j 24		5	M F and Tenant	1
307	Ireland, Aaron A.	j 25		3	M F and Freeholder	1
329	Jelly, John	w half 29		7	M F and Freeholder	7
327	Jelly, William J.	f half 27		6	M F and Landholder's Son	7
343	Kinch, Asmond	27		5	M F and Landholder's Son	1
357	Leeson, Samuel	j 28 and 29		3	M F and Freeholder	1
358	Leeson, Benson	28 and 29		3	M F and Landholder's Son	1
359	Leeson, James	29		3	M F and Freeholder	1
361	Leacock, John	r 27		3	M F and Freeholder	1
362	Loverin, Norris	23 and 24		7	M F and Freeholder	13
175	Lee, William	27		3	M F and Tenant	1
409	Matthews, George	j 28		4	M F and Freeholder	1

No. on Roll.	NAME.
410	Muldoon,
411	Muldoon,
522	Masson, J
389	McCrea, I
391	McCrea, Y
292	McCrea, I
403	McIntyre
404	McIntyre
465	McIntyre
406	McMartin
408	McMartin
412	McCarthy
413	McKim,
414	McKim,
415	McKim,
416	McKim,
448	Newans,
468	Polley, D
476	Phillips,
477	Phillips,
478	Phillips,
490	Robinson
493	Roche, I
509	Roche, V
496	Reynold
497	Riley, T
498	Riley, V
499	Riley, G
500	Rathwel
501	Rathwel
519	Smith, I
520	Smith,
521	Sworth,
523	Spry, C
524	Stoddar
525	Stoddar
526	Stoddar
540	Tallmar
549	Thomas

POLLING SUB-DIVISION NO. 4.

15

No. on Roll.	NAME.	JUROS.	LOT.	CON.	DESCRIPTION.	P. O. A.
410	Muldoon, John sr.		24, 25, 26 and 27	8	M F and Freeholder	7
411	Muldoon, John jr.		24, 25, 26 and 27	8	M F and Landholder's Son	7
522	Masson, Joseph		24	3	M F Tenant	1
389	McCrea, Heman		f three-quarter 21	3	M F and Freeholder	1
391	McCrea, William A.		f three-quarter 21	3	M F and Landholder's Son	1
292	McCrea, Donald P.		f three-quarter 21	3	M F and Landholder's Son	1
403	McIntyre, Daniel D.	j	w half 21	4	M F and Freeholder	1
404	McIntyre, Daniel sr.		21	4	M F and Freeholder	1
405	McIntyre, Joseph		20	4	M F and Landholder's Son	1
406	McMartin, Malcolm	j	23 and 24	4	M F and Freeholder	1
408	McMartin, John		24	4	M F and Freeholder	1
412	McCarthy, Daniel		23	5	M F and Freeholder	1
413	McKim, Thomas	j	e half 22	5	M F and Freeholder	1
414	McKim, George H.		w half 22	5	M F and Freeholder	1
415	McKim, George S.		28	7	M F and Freeholder	1
416	McKim, Samuel J.	j	21	7	M F and Freeholder	5
448	Newans, James	j	f 22	4	M F Tenant	1
468	Polley, Dennis		20	3	M F Tenant	1
476	Phillips, John	j	28	5	M F and Landholder's Son	1
477	Phillips, William H.		28	5	M F and Landholder's Son	1
478	Phillips, Hiram		28	5	M F and Freeholder	1
490	Robinson, Walter	j	w half 23	3	M F and Freeholder	1
493	Roche, Leander C.	j	24	3	M F and Freeholder	1
509	Roche, William W.		e half 24	3	M F and Freeholder	1
496	Reynolds, William	j	27	4	M F and Freeholder	1
497	Riley, Thomas	j	25	6	M F and Freeholder	1
498	Riley, William	j	30	6	M F and Freeholder	4
499	Riley, George		29 and 30	6	M F and Landholder's Son	4
500	Rathwell, William	j	21	5	M F and Freeholder	1
501	Rathwell, John		21	5	M F and Freeholder	1
519	Smith, Michael		30	4	M F and Freeholder	4
520	Smith, Wesley	j	30	3	M F and Tenant	1
521	Sworth, Charles	j	24	3	M F and Freeholder	1
523	Spry, Charles		25	3	M F and Freeholder	1
524	Stoddard, Joseph	j	w half 28	7	M F and Freeholder	7
525	Stoddard, John H.		w half 28	7	M F and Landholder's Son	7
526	Stoddard, John		27	8	M F and Freeholder	7
540	Tallman, Esley H.		24	3	M F and Freeholder	1
549	Thomas, Walter H.		24	3	M F and Tenant	1

No. on Roll.	NAME.	JURORS.	LOT.	CON.	DESCRIPTION.	P. O. A.
548	Vancamp, Cyrus	j 24		3	M F and Freeholder	1
564	Wickwire, Francis B.	j 20			Freeholder	1
572	Warren, Joseph	e half 28			Freeholder	1
574	Warren, Thomas	e half w. half 28			Freeholder	1
583	Warren, William	j 24			Freeholder	1
581	Wilson, Hugh	29			Freeholder	1
582	Wilson, James C.	w half 29		5	Freeholder	1
584	Wilson, James	30 and 27		7	M F and Freeholder	7

PART II.—Persons entitled to Vote at Municipal Elections only.

85	Begley, Sarah	23		5	Freeholder	1
152	Courtney, Charlotte	w quarter 29		7	Freeholder	1
154	Craig, Jane	27		7	Freeholder	1
182	Doyle, Margaret	27		3	Freeholder	1
184	Dineen, Johanna	24		4	Freeholder	1
325	Johnston, Barbara	27 and 28		4	Freeholder	1
342	Kinch, Sarah	27		5	Freeholder	1
407	McMartin, Elizabeth	23		4	Freeholder	1
508	Roche, Agnes	e half 24		3	Freeholder	1

PART III.—Persons entitled to Vote at Elections to the Legislative Assembly only.

NONE.

I, HERVEY M. BROWN, Clerk of the Municipality of the Township of Wolford, in the County of Grenville, do hereby certify that parts one and three of the within list constitute a correct list for the year 1889, of all persons appearing by the last Revised Assessment Roll of the said Municipality, to be entitled to vote at elections for members of the Legislative Assembly: and that parts one and two constitute a correct list for said year of all persons appearing by the said roll to be entitled to vote at Municipal Elections in said Municipality; and I hereby call upon all electors to examine the said list, and if any omissions or other errors are perceived therein, to take immediate proceedings to have the said errors corrected according to law.

Dated this Eleventh Day of July, 1889.

H. M. BROWN,
Clerk of said Municipality,
Easton's Corners Post Office.

