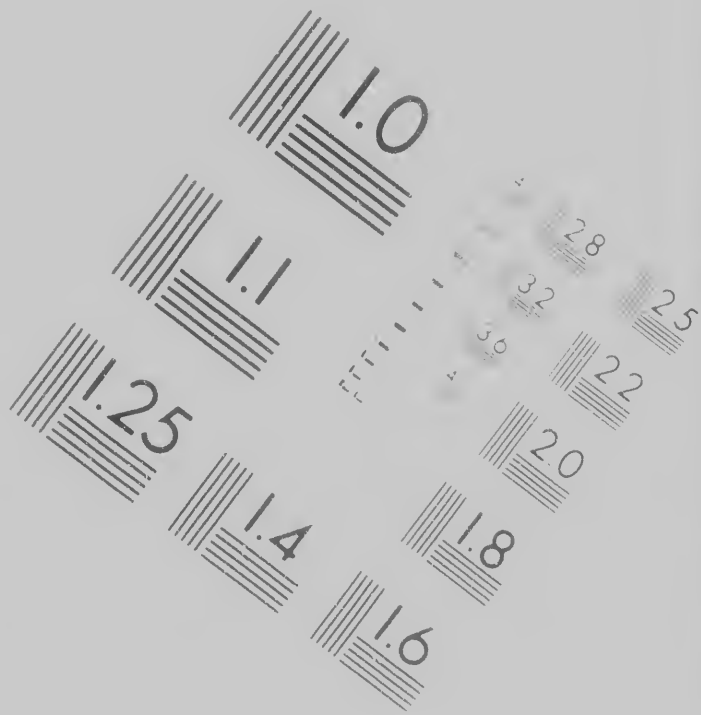


## IMAGE EVALUATION TEST TARGET (MT-10)





ATION  
(MT-3)



**CIHM/ICMH  
Microfiche  
Series.**

**CIHM/ICMH  
Collection de  
microfiches.**

MH  
n de  
es.

Tech

The Institute has attempted to reproduce the original copy available for microfilm. The copy which may be bibliographically different, which may alter any of the details of the reproduction, or which may be a different method of film reproduction, or which may be the usual method of film reproduction.

Coloured covers/  
 Couverture de couleur

Covers damaged/  
 Couverture endommagée

Covers restored and  
 Couverture restaurée

Cover title missing/  
 Le titre de couverture

Coloured maps/  
 Cartes géographiques

Coloured ink (i.e. dyes)  
 Encre de couleur (i.e. teintures)

Coloured plates and  
 Planches et/ou illustrations

Bound with other material  
 Relié avec d'autres documents

Tight binding may

Technical and Bibliographic Notes/Notes techniques et bibliographiques

attempted to obtain the best available for filming. Features of this copy may be bibliographically unique, and any of the images in the original which may significantly change the appearance of the copy on film of microfilm, are checked below.

L'Institut a microfilmé le meilleur exemplaire qu'il lui a été possible de se procurer. Les particularités de cet exemplaire qui sont peut-être uniques d'un point de vue bibliographique, qui peuvent modifier une image reproduite, ou qui peuvent entraîner une modification dans la méthode normale de microfilmage, sont indiqués ci-dessous.

Coloured pages/  
Pages de couleur

Coloured pages/  
Pages de couleur

Damaged/  
Endommagée

Pages damaged/  
Pages endommagées

Restored and/or laminated/  
Restaurée et/ou pelliculée

Pages restored and/or laminated/  
Pages restaurées et/ou pelliculées

Cover missing/  
Couverture manque

Pages discoloured, stained or foxed/  
Pages décolorées, tachetées ou pie

Coloured maps/  
Cartes graphiques en couleur

Pages detached/  
Pages détachées

Coloured ink (i.e. other than blue or black)/  
Encre de couleur (i.e. autre que bleue ou noire)

Showthrough/  
Transparence

Coloured plates and/or illustrations/  
Planches et/ou illustrations en couleur

Quality of print varies/  
Qualité inégale de l'impression

Includes other material/  
Comprend d'autres documents

Includes supplementary material/  
Comprend du matériel supplémentaire

Microfilm may cause shadows or distortion

Only edition available/

un exemplaire  
curer. Les details  
être uniques du  
i peuvent modifier  
uvent exiger une  
ormale de filmage

The copy filmed here has been reproduced  
to the generosity of:

Library of Congress  
Photoduplication Service

The images appearing here are the best quality  
possible considering the condition and legibility  
of the original copy and in keeping with the  
filming contract specifications.

nated,  
iculées

or foxed  
s ou piquees

Original copies in printed paper covers are filmed  
beginning with the front cover and ending on  
the last page with a printed or illustrated im-  
pression, or the back cover when appropriate. All  
other original copies are filmed beginning on the  
first page with a printed or illustrated im-  
pression, and ending on the last page with a printed  
or illustrated impression.

sion

aterial  
plémentaire

Maps, plates, charts, etc., may be filmed at  
different reduction ratios. Those too large to  
entirely included in one exposure are filmed  
beginning in the upper left hand corner, left  
right and top to bottom, as many frames as  
required. The following diagrams illustrate the  
method:

duced thanks

L'exemplaire filmé fut reproduit grâce à la  
générosité de:

vice

Library of Congress  
Photoduplication Service

est quality  
nd legibility  
with the

Les images suivantes ont été reproduites avec le  
plus grand soin, compte tenu de la condition et  
de la netteté de l'exemplaire filmé, et en  
conformité avec les conditions du contrat de  
filmage.

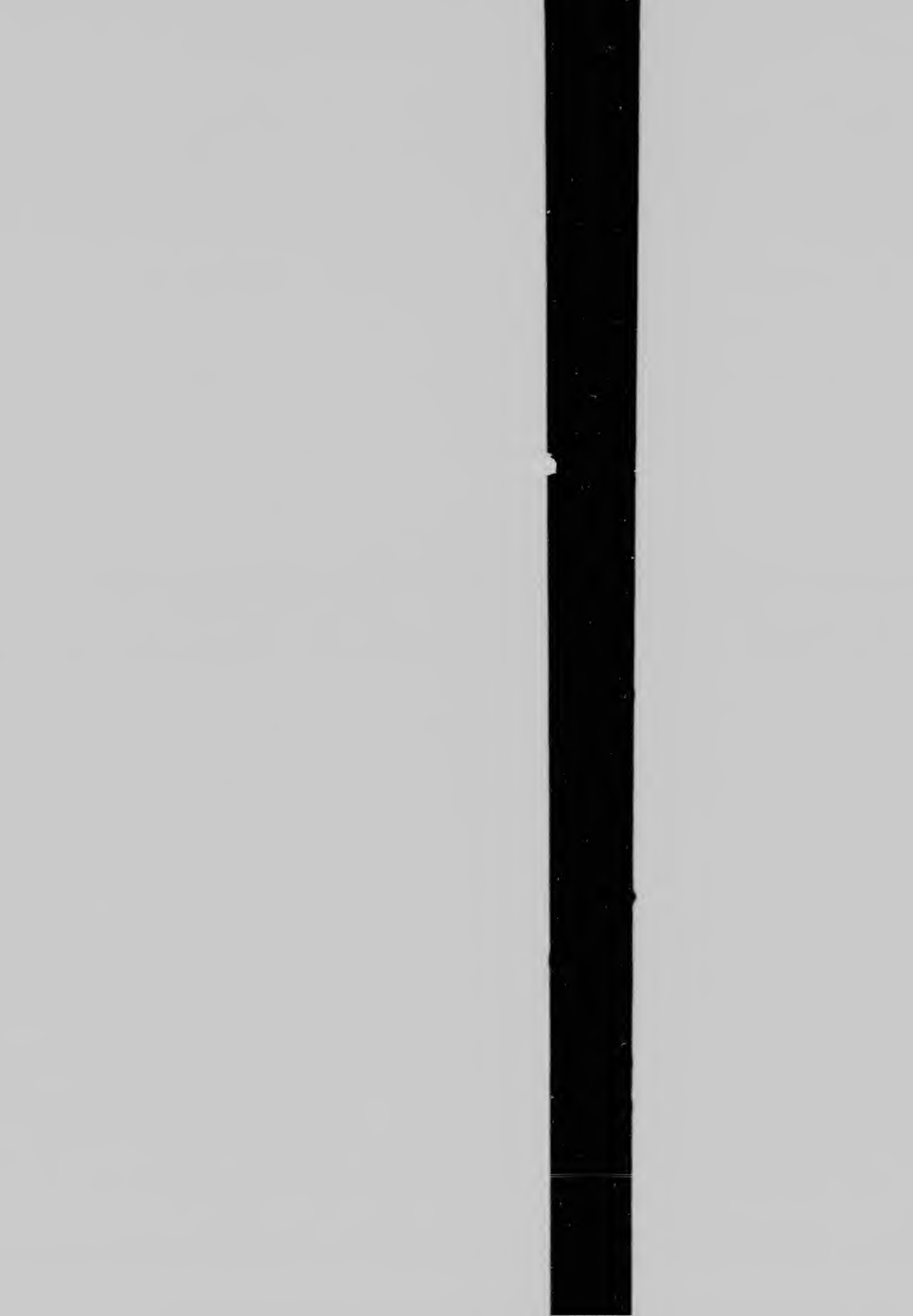
ers are filmed  
ending on  
ated impres-  
riate. All  
nning on the  
d impres-  
th a printed

Les exemplaires originaux dont la couverture en  
papier est imprimée sont filmés en commençant  
par le premier plat et en terminant soit par la  
dernière page qui comporte une empreinte  
d'impression ou d'illustration, soit par le second  
plat, selon le cas. Tous les autres exemplaires  
originaux sont filmés en commençant par la  
première page qui comporte une empreinte  
d'impression ou d'illustration et en terminant par  
la dernière page qui comporte une telle  
empreinte.

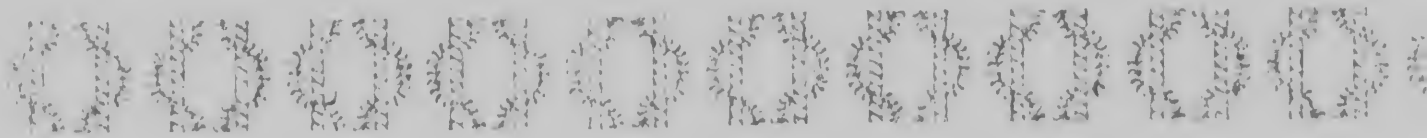
med at  
large to be  
filmed  
ner, left to  
mes as  
strate the

Les cartes, planches, tableaux, etc., peuvent être  
filmés à des taux de réduction différents.  
Lorsque le document est trop grand pour être  
reproduit en un seul cliché, il est filmé à partir  
de l'angle supérieur gauche, de gauche à droite,  
et de haut en bas, en prenant le nombre  
d'images nécessaire. Les diagrammes suivants

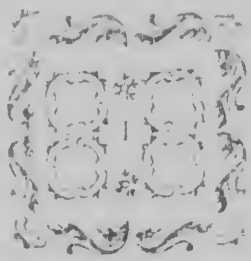








## To the candid P U



N. Hartford and New Haven papers, published a Piece, sign'd *Mary*, addressed to the *Public*; regarding a meeting of the inhabitants of that town in the colony, to choose members to attend a meeting at Middletown, the last Wednesday of March instant, to consult measures proper to be pursued to evade the evils which the author apprehends will attend the measures adopted by the General Assembly, respecting the western lands.

The measure proposed by the author of that piece, to alarm the people, and excite a spirit of dissension and discord, are in themselves, so very extraordinary, and the facts referred to so totally void of the least colour of truth, as they stand in their connection, that a plain narrative of the true state of the matters here refers to, may be necessary to undeceive the malicious Freeman of the Colony, and expose the latent designs of that author, who covers himself under fictitious names and characters, that his person as well as his falsehoods may not be exposed to the just resentments of an abused and injur'd people. He begins with observing, that *the Susquehanna company have of late, by increasing their numbers, that a vote of the assembly could not be obtained to exclude their members from sitting in that assembly in which they were immediately interested.*—As to the increase of their numbers in the Assembly, *of late*, the author can have no authority for such assertion; as the number have been nearly the same for many years who have composed part of that body, and never amounted to one quarter of the number, which number no time has been when they were so numerous, as to be extending their claims to the westward. And as to that company's sitting in the assembly, it is a confirmation of truth, that some members of that body, or part of those members, for a great number of years, for any other purpose whatever, all the propositions in that purchase have been confirm'd, and have received or voted in any vote concerning it; but when any members of the assembly have mov'd for the consideration of some general question respecting the whole of the western land, and not in particular affecting the Susquehanna purchase, the proprietors have voted, as they had good right, and can be no more accus'd than any other person in the colony, for sitting in the assembly, or for interest to

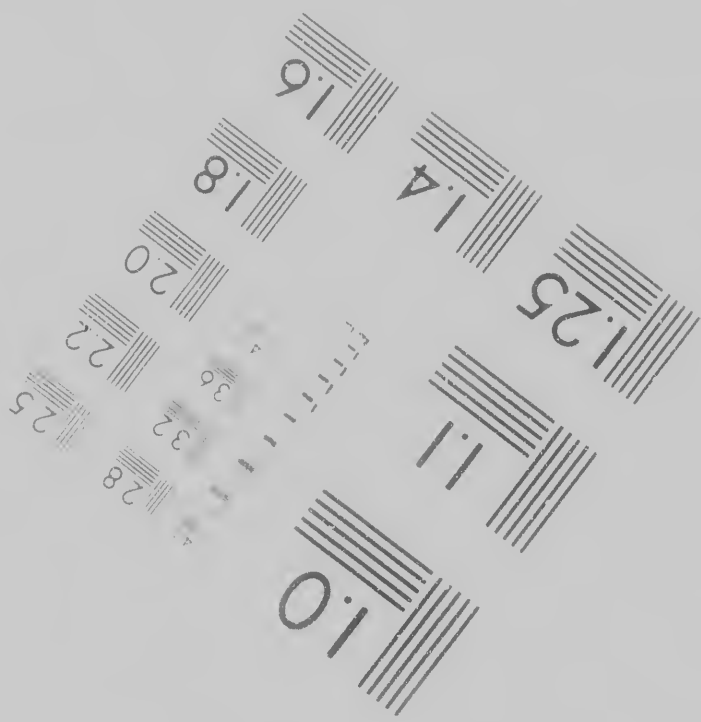
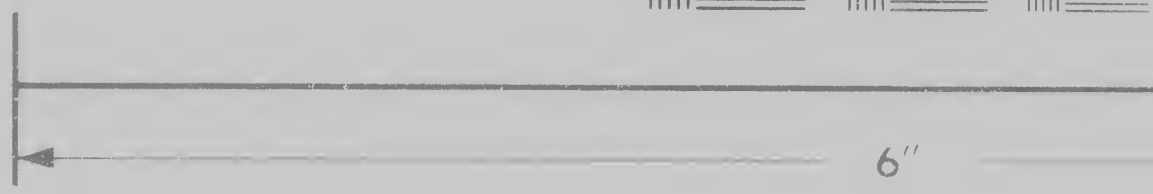
proprietors be charged to their account. In the opinion of the most eminent lawyers in favor of our title, the assembly, at the 10th of October, again took up the question in debate, as was during the session: and the question was put in the lower house, Whether the assembly should support their claim, and in some proper manner support such claim to the western land. In the division there appeared 34 in the negative, and 100 in the affirmative; on which a committee was appointed, taken indifferently from both sides, to consider and report the proper course for the colony to pursue; which committee, among other things, to send commissioners to Pennsylvania, to endeavour a settlement of the western land without further expense; and that such measures should be taken to preserve peace and good order, and to punish immorality among the people; and also every other measure of importance, that should be since been considered by the assembly, and that controversy which was also considered and accepted by the assembly, in as full a house as when the former report was made, and concurr'd in the upper house; and that the report relative to sending commissioners to Pennsylvania, should be carried into execution, and the next adjournment to be further considered of the commissioners;—at the adjournment the commissioners having made their report, the assembly again took up the matter, and in a full house, not less than 125 members present, passed a bill erecting the line of the western land west of Delaware river, and the line settled with Indians in 1763, and incorporated the same into the laws, courts, &c. and invested that court with all the privileges which other courts of law have. This bill, after debate, was dissent'd to in the upper house, and a bill, constituting a town within part of Delaware river, to extend from the north and south line drawn at west of a place called Worsing, to the same to the county of Litchfield: this bill in the lower house, 64 members only were in favor of it. But as this was erecting and incorpo-

# PUBLIC.

point. On moving the  
at lawyers in the nation  
nably at their session on  
question in as full a house  
and the question was put  
the assembly would assert  
proper effectual manner  
western lands? and on a  
in the negative and about  
which a large committee  
erently from the yeas and  
t the proper measures for  
h committee reported, a-  
e on the 17th of Pennsylv-  
e sent at the committee,  
a 2d of the same day should  
a. I have no objection, and to  
among the people settled  
to every other matter of  
ce been transacted in the  
controversy. This report  
ented in the lower house,  
the yeas were paid, and  
the yeas; this part of the  
e in the lower house, then  
the reporter referred to the  
e considered on the report  
at the adjournment, the  
e their report, the assen-  
er, and in a very full house,  
s passed in the lower house  
the yeas were paid, and  
ever said, and he would to  
ns in the lower house,  
e in the lower house, that  
at every point, and with  
her to the lower counties by  
e deliberate consideration,  
ever made; and on their  
tain on the same day, and  
end from Delaware first  
drawn at 15 miles distant  
forming, and on each the  
held: this was concerned  
members only being present:  
e incorporating a town to  
the lands which the lower

of the assembly was never considered as a  
e of the assembly, and the lower counties  
colony, and the lower counties, and the  
grant he might do, and the improvement  
his mind, and the lower counties, and the  
intend to pass a bill, by which  
every one must be convinced that  
is a just and true rate, and that  
one must, at all views, and over the  
author's assertion, "that the colony,  
*intended to be put at the disposal of the*  
*claim should be determined as follows.*" This  
author tells us, the last three emissions of bills amount  
to £.24000, that the taxes to sink those bills amount  
to £.31000, and so a sum of £.10,000 is cover'd for  
secret services. The amount of the three last emis-  
sions I cannot certainly say, but suppose he is nearer  
the truth than in any other of his assertions: sup-  
posing true, the case stands thus;—Our annual  
retained last October amount to £.11,757 7 9 7,  
the school monies paid annually at 1000 the £1000  
on the list, amount to about £.7500 13 3, which on  
those three rates amount to £.10774 10 9, which  
added to the amount of bills emitted, as by an ac-  
count, makes £.31774 10 9; to which ought also  
to be added the collection fees and traveling expences  
on those three rates, which on a medium can't fall  
short of £.700; by which it appears that, de-  
ducting the expences of collecting, and the school-  
monies paid annually to the crown, the rates already  
granted cannot sink the debt by more than £.1000,  
that instead of reserving a sum for private services, the  
colony will be indebted to the crown, if every far-  
thing of the rates are applied to sink the bills, and  
pay the school monies. The Main body of bills  
will be 20 years in discharge, and the interest  
thereon, and the various expences of litigation, does not  
exceed £.10000, as the treasury accounts fully evince.  
That this case can ever be protracted to that length  
of time, or can incur half the expence, cannot be  
believed by any person who will pay the least atten-  
tion to the case: for in this case the cause is deter-  
mined on the first application for commissioners: for  
if commissioners are appointed to settle the bounda-  
ries between the colony & province, it will be on the  
ground that they be under the crown; and while





Photographic  
Sciences  
Corporation

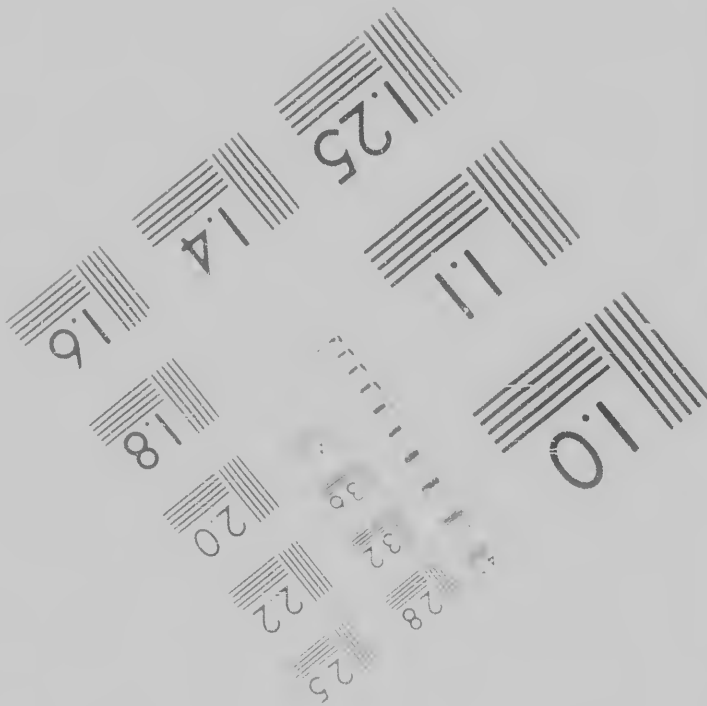
23 WEST  
WEBSTER  
1716

1.8

1.6



Canadian Insti



23 WEST MAIN STREET  
WEBSTER, N.Y. 14580  
(716) 872-4503



an Institute for Historical Microreproductions / Institut canadien de microreproducti

**© 1988**



roductions historiques

6

— Planches et/ou illu

— Bound with other r

— Relié avec d'autres

— Tight binding may

— along interior marg

La reliure serrée pe  
distorsion le long

— Blank leaves added

— appear within the

have been omitted

Il se peut que certa

lors d'une restaura

mais, lorsque cela

pas été filmées.

— Additional comme

— Commentaires sup

This item is filmed at th

Ce document est filmé a

10X

14X



12X

ou illustrations en couleur

Qualité inégale de l'impression

other material/  
d'autres documents

Includes supplementary material/  
Comprend du matériel supplémentaire

ng may cause shadows or distortion  
or margin/  
erree peut causer de l'ombre ou de la  
e long de la marge intérieure

Only edition available/  
Seule édition disponible

es added during restoration may  
in the text. Whenever possible, these  
omitted from filming/  
ue certaines pages blanches ajoutées  
restauration apparaissent dans le texte,  
ue cela était possible, ces pages n'ont  
nées.

Pages wholly or partially obscured  
slips, tissues, etc., have been refilmed  
ensure the best possible image/  
Les pages totalement ou partiellement  
obscurcies par un feuillet d'errata,  
etc., ont été filmées à nouveau de  
obtenir la meilleure image possible

omments.

CIHM no 60593

ires supplémentaires

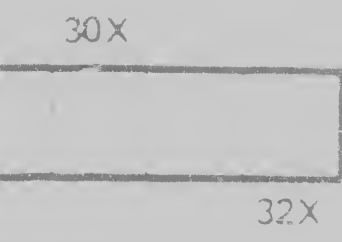
ed at the reduction ratio checked below/  
filmé au taux de réduction indique ci-dessous

14X	18X	22X	26X	30X
<input type="checkbox"/>	<input type="checkbox"/>	<input type="checkbox"/>	<input type="checkbox"/>	<input type="checkbox"/>
16X	20X	24X	28X	
<input type="checkbox"/>	<input type="checkbox"/>	<input type="checkbox"/>	<input type="checkbox"/>	

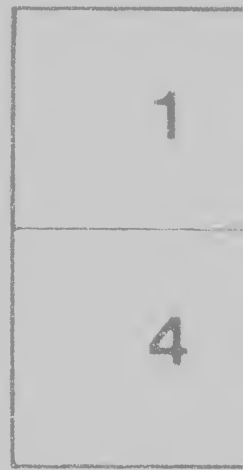
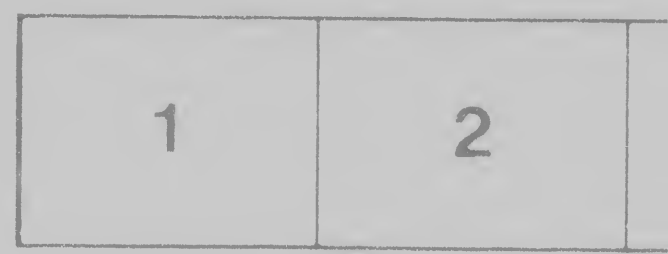
tion

aterial  
plémentaire

obscured by errata  
en refilmed to  
age/  
partiellement  
errata, une pelure  
eau de façon a  
possible

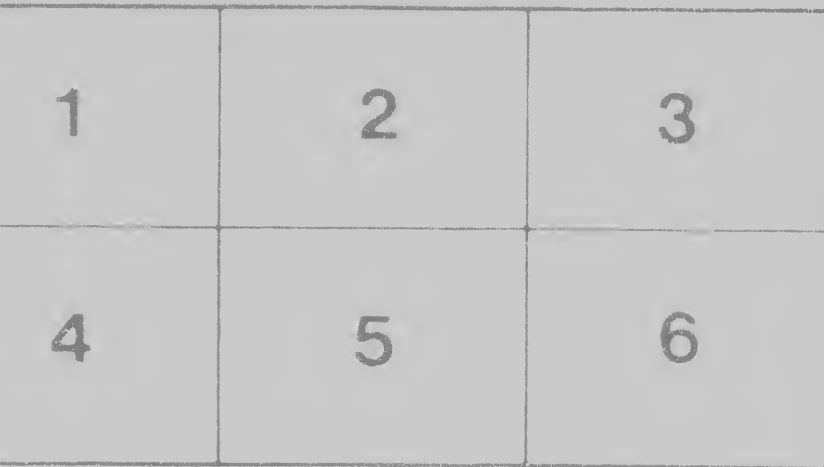
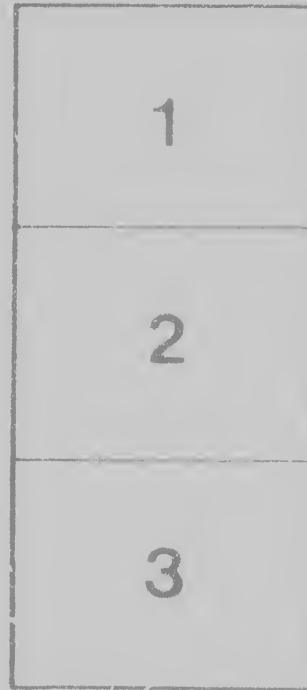
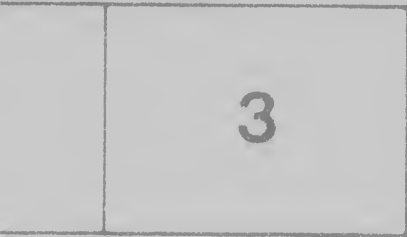


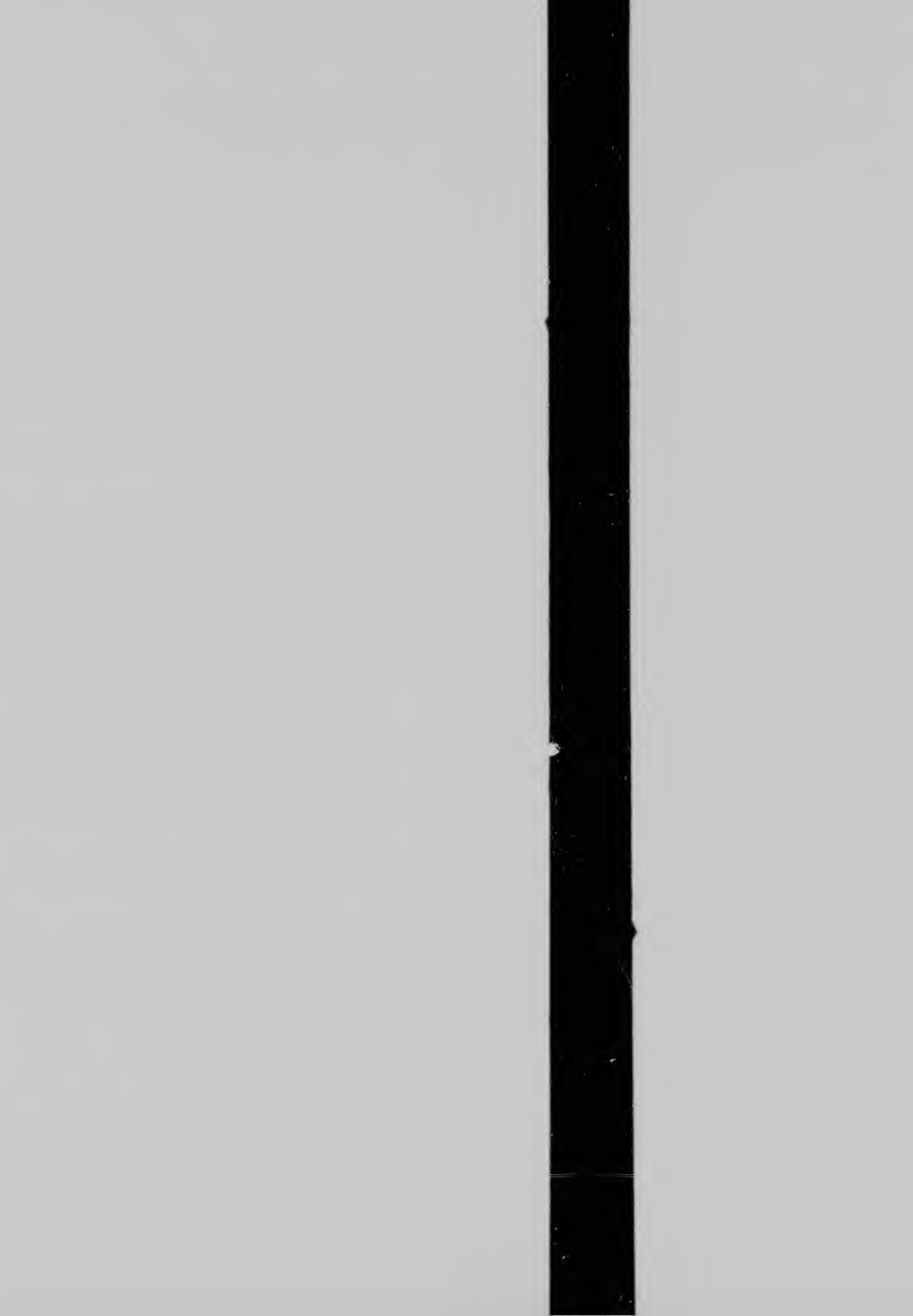
different reduction ratios. Those too large to be entirely included in one exposure are filmed beginning in the upper left hand corner, left to right and top to bottom, as many frames as required. The following diagrams illustrate the method:



large to be  
filmed  
er, left to  
mes as  
strate the

Les cartes, planches, tableaux, etc., peuvent être filmés à des taux de réduction différents. Lorsque le document est trop grand pour être reproduit en un seul cliché, il est filmé à partir de l'angle supérieur gauche, de gauche à droite, et de haut en bas, en prenant le nombre d'images nécessaire. Les diagrammes suivants illustrent la méthode.







... have not been voted in any vote con-  
sidered; but what the members of the assembly have  
would for the consideration of the general question  
respecting the whole of the western land, and not in  
particular affecting the Susquehanna; in case, the pro-  
prietors have voted, if they had good reason, and can  
be no more a *Secession* of any part of in the col-  
ony; as they neither gain a particular benefit to  
themselves, nor are deprived of any imaginary inter-  
est they may suppose to possess; and if, by the  
majority of the vote, they were to give a full part of  
the land to the people, except in the instance here  
mentioned, it is not the propriety of their  
doing. In the execution of a bill, a number,  
we are told, were in the house, though a  
bill had been passed, and a long time, and an  
order being for the interest of the company, did  
object to the bill, proprietors in that purchase exclu-  
sively, and a bill, and a man, who was  
... and vote  
... should attempt  
... by the house: but  
... convinced  
... objection, that in  
... together  
... proprietors,  
... thing in  
... over the people settled on  
... effectual me-  
... to send a  
... learned in  
... the member of  
... false; as  
... who was at that  
... and which no one  
... will contradict,  
... at a time when the  
... of those lands  
... The Susque-  
... the measure, as  
... their propo-  
... who  
... through  
... small  
... of  
... to

Lill, county in a town which was  
of Delaware, to extend from  
the north and south line drawn  
west of a place called Winton,  
line to the county of Litchfield; it  
in the lower house, 64 members  
But as this was erecting an in-  
extend over part only of the land  
house had been erected into a  
and invested with much greater  
be a great perversion of truth to  
erests of jurisdiction over those pe-  
by a small minority when most of  
returned to their homes.

The Susquehanna purchase of the  
120 miles from east to west, more  
lands of which, to the western  
to Mr. Penn, is about 100 or 120  
breadth of the colony there is about  
the grant, which this author fixes  
Haffard, begins 100 miles west of  
boundaries of Pennsylvania, and  
that if we admit Mr. Haffard to be  
his grant, and the Susquehanna  
there remains an extent of country  
in length and about 70 or 80  
no person has any pretence of  
in this colony. That Mr. Haffard  
the least color of title to the lands  
under the grant of this colony, is  
chimerical, and not believed by the  
Haffard's heirs, nor by any other  
any thing of the matter. In 1755  
plied to the assembly, shewing  
apply to his Majesty for a new  
the Appalachian mountain, which  
to N. E. from near the river Miss-  
line, and perhaps farther north, and  
beyond the Mississippi river, pray-  
posed government should be likely  
grant to this colony might not be ob-  
in any part of it extend to as to  
lands before granted to the gover-  
of this colony: To this the assen-  
rent. Mr. Haffard liv'd about 10  
took any further measures about  
tion to the crown has ever been







