

**CIHM
Microfiche
Series
(Monographs)**

**ICMH
Collection de
microfiches
(monographies)**



Canadian Institute for Historical Microreproductions / Institut canadien de microreproductions historiques

© 1999

The copy filmed here has been reproduced thanks to the generosity of:

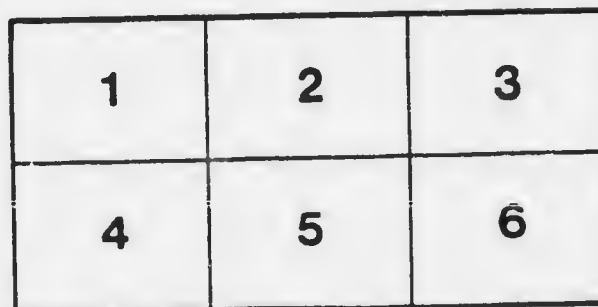
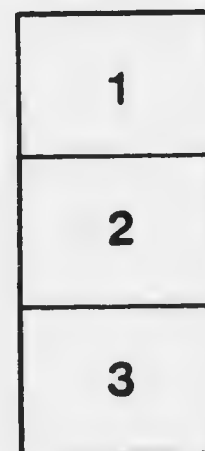
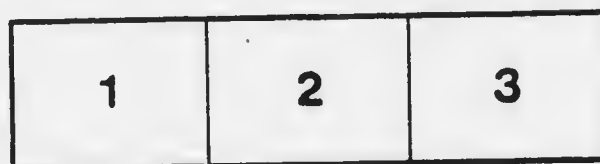
Special Collections Division
University of British Columbia Library

The images appearing here are the best quality possible considering the condition and legibility of the original copy and in keeping with the filming contract specifications.

Original copies in printed paper covers are filmed beginning with the front cover and ending on the last page with a printed or illustrated impression, or the back cover when appropriate. All other original copies are filmed beginning on the first page with a printed or illustrated impression, and ending on the last page with a printed or illustrated impression.

The last recorded frame on each microfiche shall contain the symbol \rightarrow (meaning "CONTINUED"), or the symbol ∇ (meaning "END"), whichever applies.

Maps, plates, charts, etc., may be filmed at different reduction ratios. Those too large to be entirely included in one exposure are filmed beginning in the upper left hand corner, left to right and top to bottom, as many frames as required. The following diagrams illustrate the method:



L'exemplaire filmé fut reproduit grâce à la générosité de:

Special Collections Division
University of British Columbia Library

Les images suivantes ont été reproduites avec le plus grand soin, compte tenu de la condition et de la netteté de l'exemplaire filmé, et en conformité avec les conditions du contrat de filmage.

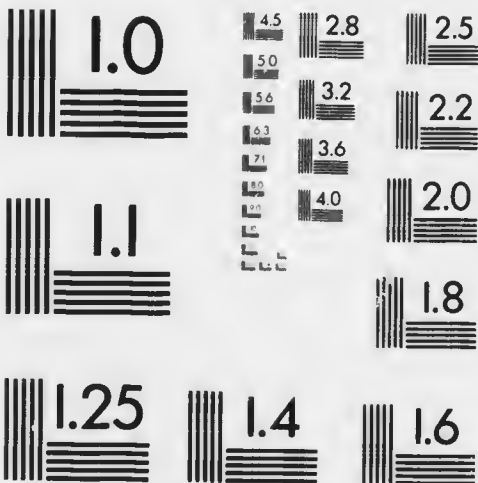
Les exemplaires originaux dont la couverture en papier est imprimée sont filmés en commençant par le premier plat et en terminant soit par la dernière page qui comporte une empreinte d'impression ou d'illustration, soit par la seconde plat, selon le cas. Tous les autres exemplaires originaux sont filmés en commençant par la première page qui comporte une empreinte d'impression ou d'illustration et en terminant par la dernière page qui comporte une telle empreinte.

Un des symboles suivants apparaîtra sur la dernière image de chaque microfiche, selon le cas: le symbole \rightarrow signifie "A SUIVRE", le symbole ∇ signifie "FIN".

Les cartes, planches, tableaux, etc., peuvent être filmés à des taux de réduction différents. Lorsque le document est trop grand pour être reproduit en un seul cliché, il est filmé à partir de l'angle supérieur gauche, de gauche à droite, et de haut en bas, en prenant le nombre d'images nécessaire. Les diagrammes suivants illustrent la méthode.

MICROCOPY RESOLUTION TEST CHART

(ANSI and ISO TEST CHART No. 2)



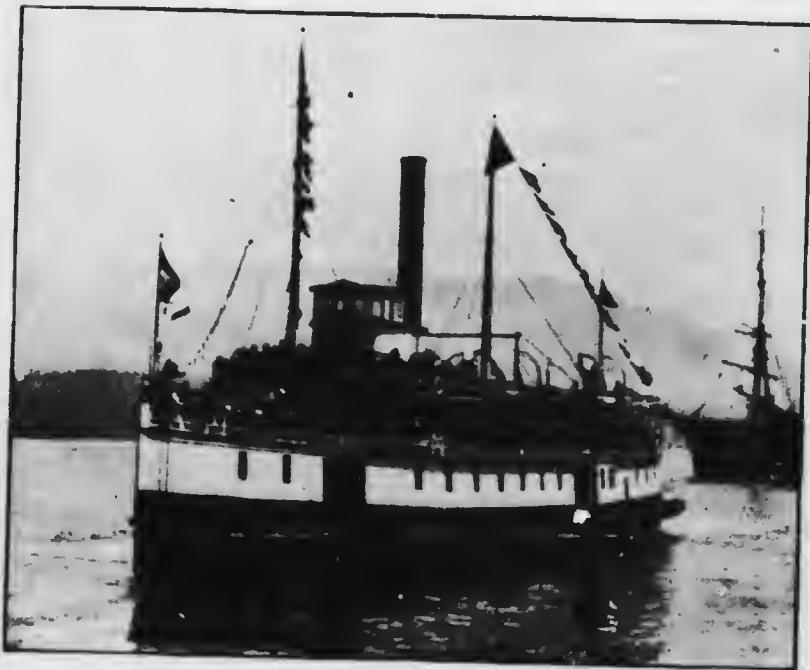
APPLIED IMAGE Inc

1653 East Main Street
Rochester, New York 14609 USA
(716) 482 - 0300 - Phone
(716) 288 - 5989 - Fax

Terminal Steam Navigation Co.

LIMITED

VANCOUVER, B. C.



SS. BARAMBA—J. A. CATES, Master

Where to Go for the Day

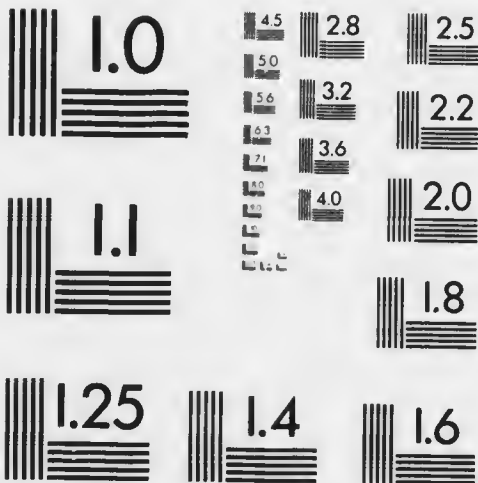


TOURISTS should not miss these trips. The only line of boats leaving Vancouver Harbor daily and returning the same day. You can see the finest harbor and scenery in the world by taking a trip on one of these boats any day, leaving Evans, Coleman Dock at 9.15 a. m. and returning about 7 p. m.

EVANS & HASTINGS, PRINTERS.

MICROCOPY RESOLUTION TEST CHART

(ANSI and ISO TEST CHART No. 2)



APPLIED IMAGE Inc

1653 East Main Street
Rochester, New York 14609 USA
(716) 482 - 0300 - Phone
(716) 288 - 5989 - Fax



SIWASH ROCK—OUTSIDE VANCOUVER HARBOR

Howe Sound Route

BOAT LEAVES EVANS, COLEMAN DOCK

— EVERY —

Monday, Tuesday, Wednesday, Thursday
Friday and Saturday at 9.15 a. m.

— AND —

Sunday at 10.30 a. m.

For Great Northern Cannery

Caulfields

Eagle Harbor Cannery

Bowen Island

Newlands

Brunswick Beach, on Tuesdays,
Fridays and Sundays

Anvil Island

South Valley

Britannia Mine

Potlach Creek, on Thursdays

Glacier Bay

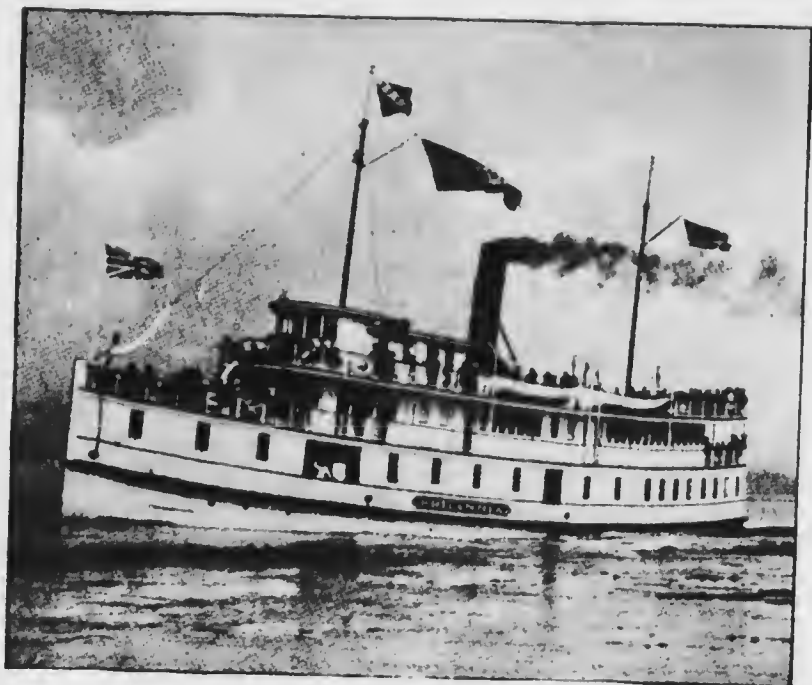
and Squamish

— FARES —

BOWEN ISLAND - - \$.50 each way
ALL POINTS ABOVE - 1.00 “

SPECIAL EXCURSION TICKETS
will be issued from May 1st until Sep-
tember 30th, good for day of issue
only. \$1.00 the Round Trip.

DINING ROOM ON BOARD.



SS. BRITANNIA—A. C. ANDERSON, Master



IF you want to see Vancouver and one of the finest inlets in the world, don't miss taking this trip. This beautiful steamer leaves Evans, Coleman Dock—

Every Morning at 9.15

for Lake Beautiful and way points, and

Every Afternoon at 2.00

for Indian River and way points, making two round trips each day, calling at all places mentioned on other side of page.

DINING ROOM ON BOARD

North Arm Route

SS. BRITANNIA, - A. C. Anderson, Master

Boat Leaves Evans, Coleman Dock Every Day

Monday, Tuesday, Wednesday, Thursday,
Friday and Saturday at 9.15 a. m. for

Coombe
Deep Cove
Woodlands
Eldridges
Bidwell Bay
Farrers
Brighton Beach
Valer Park
Lake Beautiful

At 2 p. m.
for

Indian River, calling at
B. C. Powder Works
Keefer's Quarry
Granite Falls
Indian River

and each as above named points

Sunday at 10 a. m. for Valer Park, Indian River
and all way points, lying over at Indian River
one hour

Sunday at 2 p. m. for Valer Park, Lake Beautiful
and Indian River only

During Camping Season a Special Boat leaves at 5.30 p. m.
every evening except Saturday for Lake Beautiful and all
way points.

—FARES—

LAKE BEAUTIFUL - 50 cts. each way
ALL POINTS ABOVE - 75 cts. "

☐ SPECIAL EXCURSION TICKETS will be
issued from May 1st until Sept. 30th, good for
day of issue only; 50 cents for Round Trip.

DINING ROOM ON BOARD

Resources of British Columbia

WITH the exception of nickel (which has not yet been discovered in quantity) all that the other provinces of Canada boast of possessing in the way of raw material is here in abundance. British Columbia's coal measures are sufficient to supply the world for centuries; it possesses the greatest compact area of merchantable timber in North America; the mines have produced \$299,500,000 and may be said to be only in the early stages of development; the fisheries produce an annual average value of \$7,500,000, and, apart from salmon fishing, their importance is only beginning to be realized; British Columbia's sea fisheries are among the most prolific in the world, with sheltered spawning and feeding grounds of 30,000 square miles; there are immense deposits of magnetite and hematite iron of the finest quality which still remain undeveloped; the agricultural and fruit lands, cattle ranges and dairies, produce approximately \$7,500,000 annually, and less than one-tenth of the available land is settled upon, much less cultivated; the Province has millions of acres of pulpwood as yet unexploited; petroleum deposits, but recently discovered, are among the most extensive in the world, and much of the Province is still unexplored and its potential value unknown. With all this undeveloped wealth within its borders, can it be wondered at that British Columbians are sanguine of the future? Bestowed by prodigal Nature with all the essentials for the foundation and maintenance of an empire, blessed with a healthy, temperate climate, a commanding position on the shores of the Pacific, and encompassed with inspiring grandeur and beauty, British Columbia is destined to occupy a position second to none in the world's commerce and industry.

Trade and Transportation

THE TRADE of British Columbia is the largest in the world per head of population. What may it become in the future when the resources of the province are generally realized and actively developed? In 1904 the imports amounted to \$12,079,088, and the exports totalled \$16,536,328. For the fiscal year ending March 31st, 1908, the imports were \$24,180,452, and the exports were \$23,941,187, an increase in the total trade of the province in four years of \$19,506,223. The leading articles of export are fish, coal, gold, silver, copper, lead, timber, masts, spars, furs and skins, whale products, fish oil, hops and fruit. A large portion of the salmon, canned and pickled, goes to Great Britain, Germany, Eastern Canada, the United States, Hawaiian Islands, Australia and Japan; the United States consumes a large quantity of the exported coal, and immense quantities of lumber are shipped to Great Britain, South Africa, China, Japan, India, Mexico, South America and Australia. A large inter-provincial trade with Alberta, Saskatchewan, Manitoba and the Eastern Provinces is rapidly developing, the fruit grown in British Columbia being largely shipped to the Prairie Provinces, where it finds a good market. With the shipping facilities offered by the Canadian Pacific Railway and its magnificent fleets of steamships running to Japan, China, New Zealand, Australia and Hawaii, backed by her natural advantages of climate and geographical position, British Columbia's already large trade is rapidly increasing. The number and tonnage of vessels entered and cleared at British Columbia ports in 1908 was as follows:

Inward from the sea	3,558	... tonnage	3,116,225
" Coasting Trade	..	19,034	" 5,582,976
Outward for the sea	3,793	" 3,175,509
" Coasting Trade	19,163	"	5,568,941



SIWASH ROCK—OUTSIDE VANCOUVER HARBOR

Howe Sound Route

BOAT LEAVES EVANS, COLEMAN DOCK

— EVERY —

Monday, Tuesday, Wednesday, Thursday
Friday and Saturday at 9.15 a. m.

— AND —

Sunday at 10.30 a. m.

For Great Northern Cannery

Caulfields

Eagle Harbor Cannery

Bowen Island

Newlands

Brunswick Beach, on Tuesdays,
Fridays and Sundays

Anvil Island

South Valley

Britannia Mine

Potlach Creek, on Thursdays

Glacier Bay

and Squamish

— FARES —

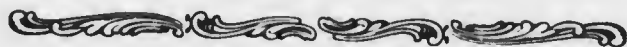
BOWEN ISLAND - - \$.50 each way
ALL POINTS ABOVE - 1.00 "

SPECIAL EXCURSION TICKETS
will be issued from May 1st until Sep-
tember 30th, good for day of issue
only. \$1.00 the Round Trip.

DINING ROOM ON BOARD.



SS. BRITANNIA—A. C. ANDERSON, Master



IF you want to see Vancouver and one of the finest inlets in the world, don't miss taking this trip. This beautiful steamer leaves Evans, Coleman Dock—

Every Morning at 9.15

for Lake Beautiful and way points, and

Every Afternoon at 2.00

for Indian River and way points, making two round trips each day, calling at all places mentioned on other side of page.

DINING ROOM ON BOARD

North Arm Route

SS. BRITANNIA, - A. C. Anderson, Master

Boat Leaves Evans, Coleman Dock Every Day

Monday, Tuesday, Wednesday, Thursday,
Friday and Saturday at 9.15 a. m. for

Coombe
Deep Cove
Woodlands
Eldridges
Bidwell Bay
Farrers
Brighton Beach
Valer Park
Lake Beautiful

At 2 p. m.
for

Indian River, calling at
B. C. Powder Works
Keefer's Quarry
Granite Falls
Indian River

and each as above named points

Sunday at 10 a. m. for Valer Park, Indian River
and all way points, lying over at Indian River
one hour

Sunday at 2 p. m. for Valer Park, Lake Beautiful
and Indian River only

During Camping Season a Special Boat leaves at 5.30 p. m.
every evening except Saturday for Lake Beautiful and all
way points.

—FARES—

LAKE BEAUTIFUL - 50 cts. each way
ALL POINTS ABOVE - 75 cts. “

☐ SPECIAL EXCURSION TICKETS will be
issued from May 1st until Sept. 30th, good for
day of issue only; 50 cents for Round Trip.

DINING ROOM ON BOARD

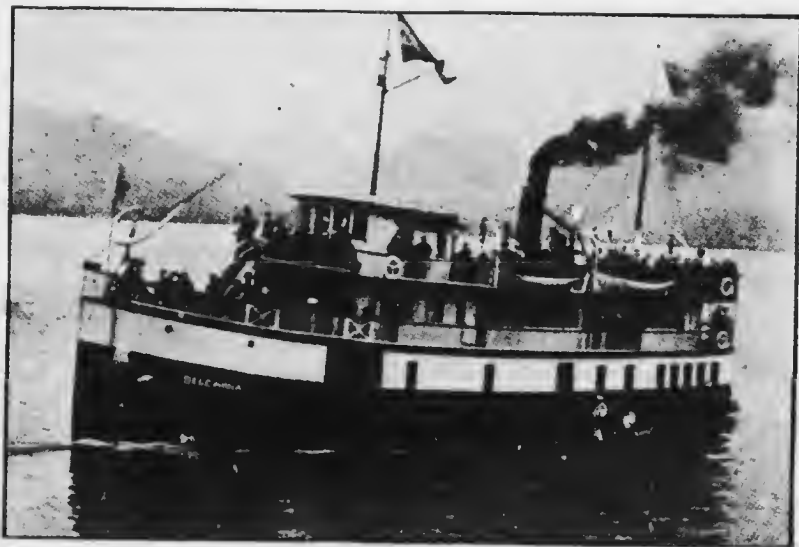
Resources of British Columbia

WITH the exception of nickel (which has not yet been discovered in quantity) all that the other provinces of Canada boast of possessing in the way of raw material is here in abundance. British Columbia's coal measures are sufficient to supply the world for centuries; it possesses the greatest compact area of merchantable timber in North America; the mines have produced \$299,500,000 and may be said to be only in the early stages of development; the fisheries produce an annual average value of \$7,500,000, and, apart from salmon fishing, their importance is only beginning to be realized; British Columbia's sea fisheries are among the most prolific in the world, with sheltered spawning and feeding grounds of 30,000 square miles; there are immense deposits of magnetite and hematite iron of the finest quality which still remain undeveloped; the agricultural and fruit lands, cattle ranges and dairies, produce approximately \$7,500,000 annually, and less than one-tenth of the available land is settled upon, much less cultivated; the Province has millions of acres of pulpwood as yet unexploited; petroleum deposits, but recently discovered, are among the most extensive in the world, and much of the Province is still unexplored and its potential value unknown. With all this undeveloped wealth within its borders, can it be wondered at that British Columbians are sanguine of the future? Bestowed by prodigal Nature with all the essentials for the foundation and maintenance of an empire, blessed with a healthy, temperate climate, a commanding position on the shores of the Pacific, and encompassed with inspiring grandeur and beauty, British Columbia is destined to occupy a position second to none in the world's commerce and industry.

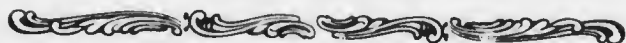
Trade and Transportation

THE TRADE of British Columbia is the largest in the world per head of population. What may it become in the future when the resources of the province are generally realized and actively developed? In 1904 the imports amounted to \$12,079,088, and the exports totalled \$16,536,328. For the fiscal year ending March 31st, 1908, the imports were \$24,180,452, and the exports were \$23,941,187, an increase in the total trade of the province in four years of \$19,506,223. The leading articles of export are fish, coal, gold, silver, copper, lead, timber, masts, spars, furs and skins, whale products, fish oil, hops and fruit. A large portion of the salmon, canned and pickled, goes to Great Britain, Germany, Eastern Canada, the United States, Hawaiian Islands, Australia and Japan; the United States consumes a large quantity of the exported coal, and immense quantities of lumber are shipped to Great Britain, South Africa, China, Japan, India, Mexico, South America and Australia. A large inter-provincial trade with Alberta, Saskatchewan, Manitoba and the Eastern Provinces is rapidly developing, the fruit grown in British Columbia being largely shipped to the Prairie Provinces, where it finds a good market. With the shipping facilities offered by the Canadian Pacific Railway and its magnificent fleets of steamships running to Japan, China, New Zealand, Australia and Hawaii, backed by her natural advantages of climate and geographical position, British Columbia's already large trade is rapidly increasing. The number and tonnage of vessels entered and cleared at British Columbia ports in 1908 was as follows:

Inward from the sea	3,558	tonnage	3,116,225
" Coasting Trade..	19,034	"	5,582,976
Outward for the sea	3,793	"	3,175,509
" Coasting Trade	19,163	"	5,568,941



SS. BELCARRA—J. A. CATES, Master



IF you want to see nice scenery and all the Logging Camps, logging with steam engines and long mountain chutes, cosy little Summer Homes and Ranches, take this boat every Monday, Tuesday, Thursday or Friday, leaving Evans, Coleman Dock at 9.15 in morning and returning same day at about 7 p. m.

— FARES —

from May 1st until September 1st

\$1.00 for the ROUND TRIP

good for date of issue only

DINING ROOM ON BOARD.



SS. DEFIANCE

IF you want a short, beautiful Harbor Trip, take this boat for Port Moody (once the terminus of the Canadian Pacific Railway), at the end of Burrard Inlet, one of the most beautiful harbors and townsites in the world. Eventually the most beautiful homes will be at this point.

Boat leaves Evans, Coleman Dock at 9.15 every morning, returning about 2 p. m.

— FARE —

ROUND TRIP, 50 CENTS

good for date of issue only

Store and Restaurant



The Coney Island of the Pacific

Bowen Island

The Finest Summer Resort on this Coast

THIS Company has three hundred and twenty acres at this port, using it especially for park purposes and camping ground. Fine bathing beaches and the best of drinking water. No mosquitoes or other troublesome flies on this Island. All kinds of fresh vegetables, milk, butter and eggs can be had. Fruit and berries in abundance raised on the Island. Cottages and furnished tents for rent



PLAY GROUND—BOWEN ISLAND



Bowen Island

Lovely Park with Shaded Walks
Ball Grounds and Pavilion

Campers can buy all kinds of Supplies
at the Store — fresh milk
butter and eggs

GLASS-BOTTOM BOATS A SPECIALTY

PK
72
3E 57.18
60 4/1
1925



**Mount
Garibaldi**

Mount Garibaldi, at the Squamish, is one of the highest and most conspicuous mountains on the Coast. This mountain can be seen from any part of the Gulf of Georgia.



