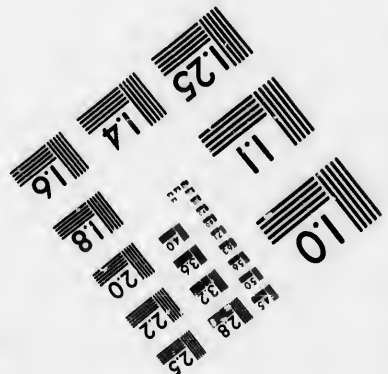
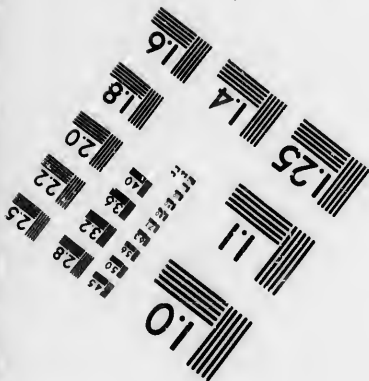
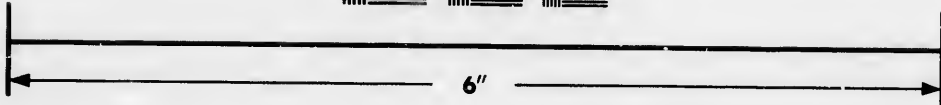
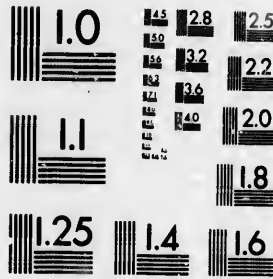


**IMAGE EVALUATION
TEST TARGET (MT-3)**



**Photographic
Sciences
Corporation**

23 WEST MAIN STREET
WEBSTER, N.Y. 14580
(716) 872-4503



**CIHM/ICMH
Microfiche
Series.**

**CIHM/ICMH
Collection de
microfiches.**



Canadian Institute for Historical Microreproductions / Institut canadien de microreproductions historiques



© 1986

Technical and Bibliographic Notes/Notes techniques et bibliographiques

The Institute has attempted to obtain the best original copy available for filming. Features of this copy which may be bibliographically unique, which may alter any of the images in the reproduction, or which may significantly change the usual method of filming, are checked below.

L'institut a microfilmé le meilleur exemplaire qu'il lui a été possible de se procurer. Les détails de cet exemplaire qui sont peut-être uniques du point de vue bibliographique, qui peuvent modifier une image reproduite, ou qui peuvent exiger une modification dans la méthode normale de filmage sont indiqués ci-dessous.

- | | |
|--|--|
| <input type="checkbox"/> Coloured covers/
Couverture de couleur | <input type="checkbox"/> Coloured pages/
Pages de couleur |
| <input type="checkbox"/> Covers damaged/
Couverture endommagée | <input type="checkbox"/> Pages damaged/
Pages endommagées |
| <input type="checkbox"/> Covers restored end/or laminated/
Couverture restaurée et/ou pelliculée | <input type="checkbox"/> Pages restored and/or laminated/
Pages restaurées et/ou pelliculées |
| <input type="checkbox"/> Cover title missing/
Le titre de couverture manqué | <input checked="" type="checkbox"/> Pages discoloured, stained or foxed/
Pages décolorées, tachetées ou piquées |
| <input type="checkbox"/> Coloured maps/
Cartes géographiques en couleur | <input type="checkbox"/> Pages detached/
Pages détachées |
| <input type="checkbox"/> Coloured ink (i.e. other than blue or black)/
Encre de couleur (i.e. autre que bleue ou noire) | <input checked="" type="checkbox"/> Showthrough/
Transparence |
| <input type="checkbox"/> Coloured plates and/or illustrations/
Planches et/ou illustrations en couleur | <input type="checkbox"/> Quality of print varies/
Qualité inégale de l'impression |
| <input type="checkbox"/> Bound with other material/
Relié avec d'autres documents | <input type="checkbox"/> Includes supplementary material/
Comprend du matériel supplémentaire |
| <input type="checkbox"/> Tight binding may cause shadows or distortion
along interior margin/
Le reliure serrée peut causer de l'ombre ou de la
distorsion le long de la marge intérieure | <input type="checkbox"/> Only edition available/
Seule édition disponible |
| <input type="checkbox"/> Blank leaves added during restoration may
appear within the text. Whenever possible, these
have been omitted from filming/
Il se peut que certaines pages blanches ajoutées
lors d'une restauration apparaissent dans le texte,
mais, lorsque cela était possible, ces pages n'ont
pas été filmées. | <input type="checkbox"/> Pages wholly or partially obscured by errata
slips, tissues, etc., have been refilmed to
ensure the best possible image/
Les pages totalement ou partiellement
obscurcies par un feuillet d'errata, une pelure,
etc., ont été filmées à nouveau de façon à
obtenir la meilleure image possible. |
| <input checked="" type="checkbox"/> Additional comments: [Printed ephemera] 1 sheet (verso blank)
Commentaires supplémentaires: | |

This item is filmed at the reduction ratio checked below/
Ce document est filmé au taux de réduction indiqué ci-dessous.

10X	14X	18X	22X	26X	30X
<input type="checkbox"/>	<input type="checkbox"/>	<input type="checkbox"/>	<input type="checkbox"/>	<input checked="" type="checkbox"/>	<input type="checkbox"/>
12X	16X	20X	24X	28X	32X

The copy filmed here has been reproduced thanks to the generosity of:

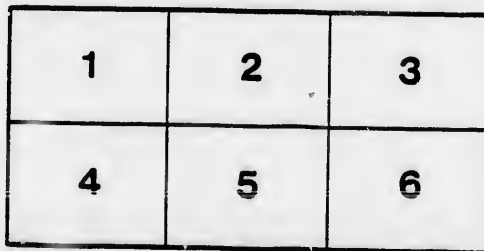
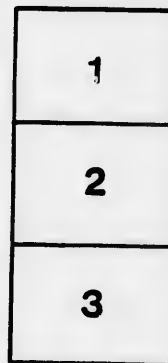
Manuscript Division
Public Archives of Canada

The images appearing here are the best quality possible considering the condition and legibility of the original copy and in keeping with the filming contract specifications.

Original copies in printed paper covers are filmed beginning with the front cover and ending on the last page with a printed or illustrated impression, or the back cover when appropriate. All other original copies are filmed beginning on the first page with a printed or illustrated impression, and ending on the last page with a printed or illustrated impression.

The last recorded frame on each microfiche shall contain the symbol \rightarrow (meaning "CONTINUED"), or the symbol ∇ (meaning "END"), whichever applies.

Maps, plates, charts, etc., may be filmed at different reduction ratios. Those too large to be entirely included in one exposure are filmed beginning in the upper left hand corner, left to right and top to bottom, as many frames as required. The following diagrams illustrate the method:



L'exemplaire filmé fut reproduit grâce à la générosité de:

Division des manuscrits
Archives publiques du Canada

Les images suivantes ont été reproduites avec le plus grand soin, compte tenu de la condition et de la netteté de l'exemplaire filmé, et en conformité avec les conditions du contrat de filmage.

Les exemplaires originaux dont la couverture en papier est imprimée sont filmés en commençant par le premier plat et en terminant soit par la dernière page qui comporte une empreinte d'impression ou d'illustration, soit par le second plat, selon le cas. Tous les autres exemplaires originaux sont filmés en commençant par la première page qui comporte une empreinte d'impression ou d'illustration et en terminant par la dernière page qui comporte une telle empreinte.

Un des symboles suivants apparaîtra sur la dernière image de chaque microfiche, selon le cas: le symbole \rightarrow signifie "A SUIVRE", le symbole ∇ signifie "FIN".

Les cartes, planches, tableaux, etc., peuvent être filmés à des taux de réduction différents. Lorsque le document est trop grand pour être reproduit en un seul cliché, il est filmé à partir de l'angle supérieur gauche, de gauche à droite, et de haut en bas, en prenant le nombre d'images nécessaire. Les diagrammes suivants illustrent la méthode.

V.



PROCLAMATION

**WEST RIDING OF THE
COUNTY OF NORTHUMBERLAND,
TO WIT.**

PUBLIC NOTICE

Majesty's Writ to me directed, and bearing date the Thirty-first
one thousand eight hundred and sixty-four, I require the presence

TOWN

IN THE

TOWN of CO



8788

R.

AMMATION!

NOTICE is hereby given to the Electors of
the County of Northumberland, that in obedience to Her
Majesty's command, on the Thirty-first day of the month of March, in the year of our Lord
1801, they are to require the presence of the said Electors at the

N HALL,

IN THE

OF COBOURG,

TOWN OF CO

In the West Riding of the County

THURSDAY THE FOURTEEN

in the year of our Lord one thousand eight hundred and sixty
purpose of electing a person to represent them in the Legislature
Poll shall be demanded and allowed in the manner by law prescribed

THE TUESDAY

the 21st day

In the year of our Lord one thousand eight hundred and sixty

IN THE TOWN OF

In the South Ward, at the No. 2 Engine

In West Ward, at a Hustings to be erected

In the East Ward, at a Hustings on St. James Street

At the Town Hall, in the Village of Cold Springs, in the Parish of St. Andrew

At the Town Hall, in the Village of Alnwick, in the Parish of St. Andrew

At the Town Hall, in the Village of Grafton, in the Parish of St. Andrew

At a Hustings to be erected at the Village of Centre

Of all which every person is hereby required to conform himself accordingly.

Given under my hand, at the Town of Cobourg, Ontario, this Fourth day of April, in the year of our Lord one thousand eight hundred and sixty

ROBERT NEEDHAM

Returning Officer for the Town of Cobourg

COBOURG,

of the County of Northumberland on

FOURTEENTH DAY OF APRIL,

and sixty-four, at the hour of *Twelve o'clock, noon*, for the
in the Legislative Assembly of this Province, and that in case a
ner by law prescribed, such Poll will be opened on

WEDNESDAY,

fourteenth day of April,

and sixty-four.

TOWN OF COBOURG:

the No. 2 Engine House.

Hustings to be erected on King Street.

Hustings on Swaine street.

Old Springs, in the Township of Hamilton.

Village of Alnwick, in the Township of Alnwick.

Crafton, in the Township of Haldimand.

Village of Centreville in the Township of South Monaghan.

hereby required to take notice and govern

Town of Cobourg, in the County of Northum-
our Lord one thousand eight hundred and sixty-four.

H. NEEDHAM WADDELL,

Returning Officer for the West Riding of the County of Northumberland.

