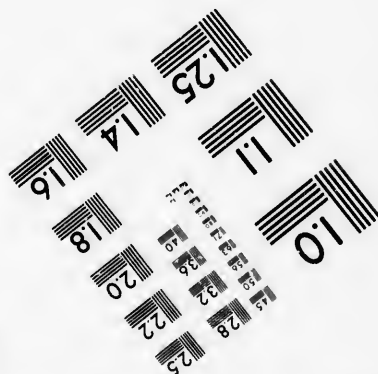
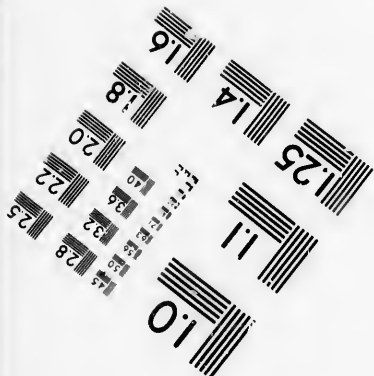
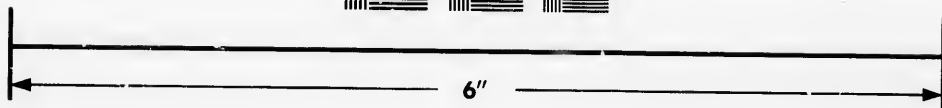
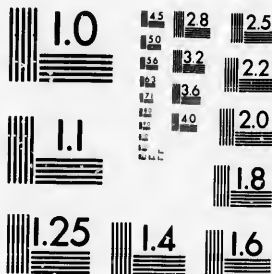


**IMAGE EVALUATION
TEST TARGET (MT-3)**



**Photographic
Sciences
Corporation**

23 WEST MAIN STREET
WEBSTER, N.Y. 14580
(716) 872-4503

**CIHM/ICMH
Microfiche
Series.**

**CIHM/ICMH
Collection de
microfiches.**



Canadian Institute for Historical Microreproductions / Institut canadien de microreproductions historiques

© 1986

Technical and Bibliographic Notes/Notes techniques et bibliographiques

The Institute has attempted to obtain the best original copy available for filming. Features of this copy which may be bibliographically unique, which may alter any of the images in the reproduction, or which may significantly change the usual method of filming, are checked below.

L'Institut a microfilmé le meilleur exemplaire qu'il lui a été possible de se procurer. Les détails de cet exemplaire qui sont peut-être uniques du point de vue bibliographique, qui peuvent modifier une image reproduite, ou qui peuvent exiger une modification dans la méthode normale de filmage sont indiqués ci-dessous.

- | | |
|--|--|
| <input type="checkbox"/> Coloured covers/
Couverture de couleur | <input type="checkbox"/> Coloured pages/
Pages de couleur |
| <input type="checkbox"/> Covers damaged/
Couverture endommagée | <input type="checkbox"/> Pages damaged/
Pages endommagées |
| <input type="checkbox"/> Covers restored and/or laminated/
Couverture restaurée et/ou pelliculée | <input type="checkbox"/> Pages restored and/or laminated/
Pages restaurées et/ou pelliculées |
| <input type="checkbox"/> Cover title missing/
Le titre de couverture manque | <input type="checkbox"/> Pages discoloured, stained or foxed/
Pages décolorées, tachetées ou piquées |
| <input type="checkbox"/> Coloured maps/
Cartes géographiques en couleur | <input type="checkbox"/> Pages detached/
Pages détachées |
| <input type="checkbox"/> Coloured ink (i.e. other than blue or black)/
Encre de couleur (i.e. autre que bleue ou noire) | <input type="checkbox"/> Showthrough/
Transparence |
| <input type="checkbox"/> Coloured plates and/or illustrations/
Planches et/ou illustrations en couleur | <input checked="" type="checkbox"/> Quality of print varies/
Qualité inégale de l'impression |
| <input type="checkbox"/> Bound with other material/
Relié avec d'autres documents | <input type="checkbox"/> Includes supplementary material/
Comprend du matériel supplémentaire |
| <input type="checkbox"/> Tight binding may cause shadows or distortion
along interior margin/
La reliure serrée peut causer de l'ombre ou de la
distorsion le long de la marge intérieure | <input type="checkbox"/> Only edition available/
Seule édition disponible |
| <input type="checkbox"/> Blank leaves added during restoration may
appear within the text. Whenever possible, these
have been omitted from filming/
Il se peut que certaines pages blanches ajoutées
lors d'une restauration apparaissent dans le texte,
mais, lorsque cela était possible, ces pages n'ont
pas été filmées. | <input type="checkbox"/> Pages wholly or partially obscured by errata
slips, tissues, etc., have been refilmed to
ensure the best possible image/
Les pages totalement ou partiellement
obscurcies par un feuillet d'errata, une pelure,
etc., ont été filmées à nouveau de façon à
obtenir la meilleure image possible. |
- Additional comments: / [Printed ephemera] 1 sheet (verso blank)
Commentaires supplémentaires:

This item is filmed at the reduction ratio checked below/
Ce document est filmé au taux de réduction indiqué ci-dessous.

10X	14X	18X	22X	26X	30X
<input type="checkbox"/>	<input type="checkbox"/>	<input type="checkbox"/>	<input checked="" type="checkbox"/>	<input type="checkbox"/>	<input type="checkbox"/>
12X	16X	20X	24X	28X	32X

The copy filmed here has been reproduced thanks to the generosity of:

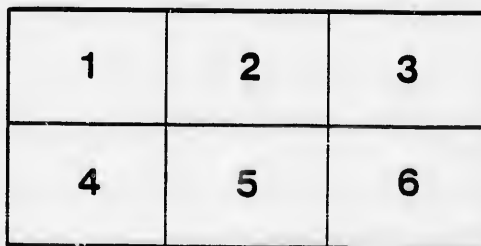
D.B. Weldon Library
University of Western Ontario
(Regional History Room)

The images appearing here are the best quality possible considering the condition and legibility of the original copy and in keeping with the filming contract specifications.

Original copies in printed paper covers are filmed beginning with the front cover and ending on the last page with a printed or illustrated impression, or the back cover when appropriate. All other original copies are filmed beginning on the first page with a printed or illustrated impression, and ending on the last page with a printed or illustrated impression.

The last recorded frame on each microfiche shall contain the symbol \rightarrow (meaning "CONTINUED"), or the symbol ∇ (meaning "END"), whichever applies.

Maps, plates, charts, etc., may be filmed at different reduction ratios. Those too large to be entirely included in one exposure are filmed beginning in the upper left hand corner, left to right and top to bottom, as many frames as required. The following diagrams illustrate the method:



L'exemplaire filmé fut reproduit grâce à la générosité de:

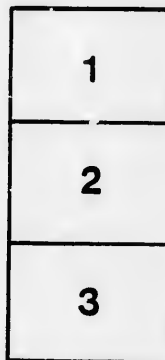
D.B. Weldon Library
University of Western Ontario
(Regional History Room)

Les images suivantes ont été reproduites avec le plus grand soin, compte tenu de la condition et de la netteté de l'exemplaire filmé, et en conformité avec les conditions du contrat de filmage.

Les exemplaires originaux dont la couverture en papier est imprimée sont filmés en commençant par le premier plat et en terminant soit par la dernière page qui comporte une empreinte d'impression ou d'illustration, soit par le second plat, selon le cas. Tous les autres exemplaires originaux sont filmés en commençant par la première page qui comporte une empreinte d'impression ou d'illustration et en terminant par la dernière page qui comporte une telle empreinte.

Un des symboles suivants apparaîtra sur la dernière image de chaque microfiche, selon le cas: le symbole \rightarrow signifie "A SUIVRE", le symbole ∇ signifie "FIN".

Les cartes, planches, tableaux, etc., peuvent être filmés à des taux de réduction différents. Lorsque le document est trop grand pour être reproduit en un seul cliché, il est filmé à partir de l'angle supérieur gauche, de gauche à droite, et de haut en bas, en prenant le nombre d'images nécessaire. Les diagrammes suivants illustrent la méthode.



London Philharmonic Society

FIRST GRAND

CONCERT

ON

Easter Tuesday, April 11, 1871

IN

THE CITY HALL,

COMPRISING SELECTIONS FROM

Handel's *Messiah* AND *Judas Maccaboeus*

Mrs. Raymond, Organist and Conductor.

PROGRAMME.

PART I.

- OVERTURE,..... OCCASIONAL,..... HANDEL.
CHORUS.—Behold the Lamb of God that taketh away the sins of the world.
- ARIA ALTO,..... MISS DUMOT
He was despised and rejected of men, a man of sorrows and acquainted with grief.
- ARIA TENOR,..... MR. H. BEATON
Behold and see, if there be any sorrow like unto his sorrow.
- RECIT. AND AIR, SOPRANO,..... MISS J. DOROTHEY
He was cut off out of the living: for the transgressions of thy people was he stricken.
But thou didst not leave his soul in hell, nor didst thou suffer thy Holy One to see corruption.
- CHORUS.—Lift up your heads, O ye gates! and be ye lift up, ye everlasting doors, and the King of Glory shall come in.
Who is the King of Glory? The Lord strong and mighty in battle.
Who is the King of Glory? The Lord of Hosts: He is the King of Glory.
- ARIA BASS,..... MR. E. ROWLAND
Thou art gone up on high, thou hast led captivity captive, and received gifts for men, yea, even for thine enemies.
That the Lord God might dwell amongst them.
- CHORUS.—The Lord gave the word: great was the company of the preachers.
- ARIA SOPRANO,..... MISS J. DOROTHEY
How beautiful are the feet of them that preach the gospel of peace, and bring glad tidings of good things.
- CHORUS.—Their sound is gone out into all lands and their words unto the ends of the world.
- QUARTETTE,..... (MISSSES MORGAN and DUMOT,
MESSRS. SANDERS and MORGAN
QUAR.—Since by man came death,
CHORUS.—By man came also the resurrection of the dead.
Quartette.—Misses Raymond & Dumot, Messrs. Johnson & Plummer
QUAR.—For as in Adam all die,
CHORUS.—Even so in Christ shall all be made alive.
- SOLO.—THE LAST MAN,..... MR. F. H. COLES
All worldly shapes shall melt in gloom, the sun himself must die,
Before this mortal shall assume its immortality.
I saw a vision in my sleep that gave my spirit strength to sweep

SOLO.—THE LAST MAN. MR. F. H. COLLES

All worldly shapes shall melt in gloom, the sun himself must die,
Before this mortal shall assume its immortality.
I saw a vision in my sleep, that gave my spirit strength to sweep
A-down the gulph of Time!
I saw the last of human mould, that shall Creation's death behold,
As Adam saw her prime!
The Sun's eye had a sickly glare, the Earth with age was wan.
The skeletons of nations were around that lonely man!
Yet, prophet-like, that lone one stood, saying, this spirit shall return
To Him that gave its heavenly spark;
Yet think not Sun, it shall be dim when thou thyself art dark!
When thou, when thou, when thou thyself art dark!
No! it shall live again and shine, in bliss unknown to beings of thine,
By Him recalled to breath.
Who captive led captivity, who robb'd the grave of Victory,
And took the sting from death.
Go, Sun, while Mercy holds me up on Nature's awful waste,
To drink this last and bitter cup of grief that man shall taste;
Go tell the night that hides thy face, thou saw'st the last of Adam's race.
On Earth's sepulchral clod,
The dark'ning universe deity to quench his immortality, or shake his trust in God!
Or shake his trust in God!

CHORUS.—Worthy is the Lamb that was slain, and hath redeemed us to God by his blood, to receive power, and riches, and wisdom, and strength, and honor, and glory, and blessing. Blessing and honor, glory and power be unto him that sitteth upon the throne, and unto the Lamb, for ever and ever.

FINALE.—Hallelujah! for the Lord God omnipotent reigneth. The kingdom of this world is become the kingdom of our Lord, and of his Christ; and he shall reign for ever and ever, King of Kings! and Lord of Lords! Hallelujah!

PART II.—JUDAS MACCABEUS.

Recit. and Air, Mr. W. C. Furness

I feel the Deity within, who the bright cherubim between,
His radiant glory erst display'd!
To Israel's distressful prayer, He hath vouchsaf'd a gracious ear,
And points out Maccabeus to their aid.
Judas shall set the captive free, and lead us on to liberty.

AIR.—Arm, arm ye brave, a noble cause,
The cause of Heaven your zeal demands;
In defence of your nation, religion and laws,
The Almighty Jehovah will strengthen your hands.

CHORUS.—We come, we come, in bright array,
Judah, thy sceptre to obey.

Air Soprano, Miss J. Dorothy
Come, ever smiling liberty, and with thee bring thy joyous train.

Recit. and Air, Tenor, Mr. H. Beaton

O Judas, may these noble views inspire, all Israel with thy true heroic fire.
AIR.—'Tis liberty! dear liberty alone! that gives fresh beauty to the sun,
That bids all nature look more gay, and lovely life with pleasure steal away.

Duet, Misses Dorothy and Raymond

Come, ever smiling liberty, and with thee bring thy joyous train,
For thee we part, and sigh for thee, with whom eternal pleasures reign.
CHORUS.—Lead on, lead on, Judah disdains the galling load of hostile chains.

Trio and Chorus, Miss Dumot, Messrs. Johnson and Plummer

Disdainful of danger, we'll rush on the foe,
That thy pow'r, O Jehovah, all nations may know.

Quintette, Misses Raymond, Rowland, Strong, Dumot and Master Sanders.

See, the conqu'ring hero comes, sound the trumpets, beat the drums;
Sports prepare, the laurel bring, songs of triumph to him sing.

Quartette, Mrs. Dawson, Misses Mearns, Jepson and McMullen

See the God-like youth advance, breathe the flutes and lead the dance,
Myrtle wreaths and roses twine, to deck the hero's brow divine.

CHORUS.—See, the conqu'ring hero comes, &c.

Duet, Misses Dorothy and Raymond

O! lovely pencil, with plenty crown'd, come, spread thy blessings all around;
Let fleecy flocks the hills adorn, and valleys smile with wavy grain.

CHORUS.—Hallelujah! Amen. O Judah rejoice in songs divine,
With cherubim and seraphim harmonious join. Hallelujah! Amen.

GOD SAVE THE QUEEN.

Reserved Seats 50 Cents. - - Second Seats 25 Cents.

The plan of Reserved Seats may be seen at Mr. E. A. Taylor's Bookstore.
Tickets can be obtained from Messrs. E. A. Taylor, W. L. Carr, and any of the members.

Shows open at 7.30. Doors commence at 8.

Free Press Print.]

