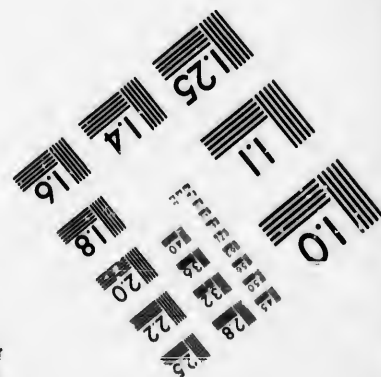
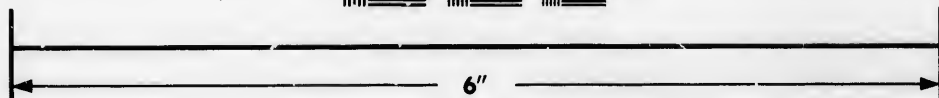
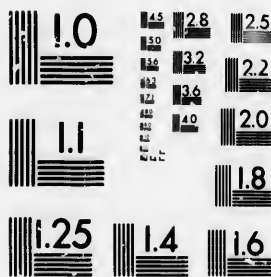


**IMAGE EVALUATION
TEST TARGET (MT-3)**



**Photographic
Sciences
Corporation**

23 WEST MAIN STREET
WEBSTER, N.Y. 14580
(716) 872-4503

**CIHM/ICMH
Microfiche
Series.**

**CIHM/ICMH
Collection de
microfiches.**



Canadian Institute for Historical Microreproductions / Institut canadien de microreproductions historiques

© 1985

Technical and Bibliographic Notes/Notes techniques et bibliographiques

The Institute has attempted to obtain the best original copy available for filming. Features of this copy which may be bibliographically unique, which may alter any of the images in the reproduction, or which may significantly change the usual method of filming, are checked below.

L'Institut a microfilmé le meilleur exemplaire qu'il lui a été possible de se procurer. Les détails de cet exemplaire qui sont peut-être uniques du point de vue bibliographique, qui peuvent modifier une image reproduite, ou qui peuvent exiger une modification dans la méthode normale de filmage sont indiqués ci-dessous.

- Coloured covers/
Couverture de couleur
- Covers damaged/
Couverture endommagée
- Covers restored and/or laminated/
Couverture restaurée et/ou pelliculée
- Cover title missing/
Le titre de couverture manque
- Coloured maps/
Cartes géographiques en couleur
- Coloured ink (i.e. other than blue or black)/
Encre de couleur (i.e. autre que bleue ou noire)
- Coloured plates and/or illustrations/
Planches et/ou illustrations en couleur
- Bound with other material/
Relié avec d'autres documents
- Tight binding may cause shadows or distortion along interior margin/
La reliure serrée peut causer de l'ombre ou de la distortion le long de la marge intérieure
- Blank leaves added during restoration may appear within the text. Whenever possible, these have been omitted from filming/
Il se peut que certaines pages blanches ajoutées lors d'une restauration apparaissent dans le texte, mais, lorsque cela était possible, ces pages n'ont pas été filmées.
- Additional comments: / [Printed ephemera] 1 sheet (verso blank)
Commentaires supplémentaires:

- Coloured pages/
Pages de couleur
- Pages damaged/
Pages endommagées
- Pages restored and/or laminated/
Pages restaurées et/ou pelliculées
- Pages discoloured, stained or foxed/
Pages décolorées, tachetées ou piquées
- Pages detached/
Pages détachées
- Showthrough/
Transparence
- Quality of print varies/
Qualité inégale de l'impression
- Includes supplementary material/
Comprend du matériel supplémentaire
- Only edition available/
Seule édition disponible
- Pages wholly or partially obscured by errata slips, tissues, etc., have been refilmed to ensure the best possible image/
Les pages totalement ou partiellement obscurcies par un feuillet d'errata, une pelure, etc., ont été filmées à nouveau de façon à obtenir la meilleure image possible.

This item is filmed at the reduction ratio checked below/
Ce document est filmé au taux de réduction indiqué ci-dessous.

10X	14X	18X	22X	26X	30X
<input type="checkbox"/>	<input type="checkbox"/>	<input type="checkbox"/>	<input type="checkbox"/>	<input checked="" type="checkbox"/>	<input type="checkbox"/>
12X	16X	20X	24X	28X	32X

The copy filmed here has been reproduced thanks to the generosity of:

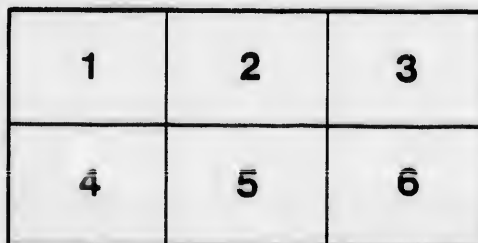
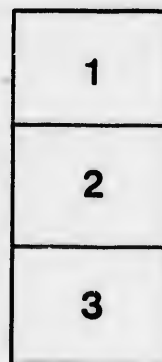
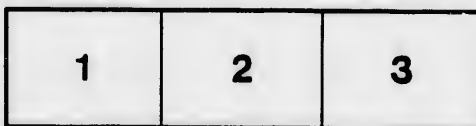
D. B. Weldon Library
University of Western Ontario
(Regional History Room)

The images appearing here are the best quality possible considering the condition and legibility of the original copy and in keeping with the filming contract specifications.

Original copies in printed paper covers are filmed beginning with the front cover and ending on the last page with a printed or illustrated impression, or the back cover when appropriate. All other original copies are filmed beginning on the first page with a printed or illustrated impression, and ending on the last page with a printed or illustrated impression.

The last recorded frame on each microfiche shell contain the symbol \rightarrow (meaning "CONTINUED"), or the symbol ∇ (meaning "END"), whichever applies.

Maps, plates, charts, etc., may be filmed at different reduction ratios. Those too large to be entirely included in one exposure are filmed beginning in the upper left hand corner, left to right and top to bottom, as many frames as required. The following diagrams illustrate the method:



L'exemplaire filmé fut reproduit grâce à la générosité de:

D. B. Weldon Library
University of Western Ontario
(Regional History Room)

Les images suivantes ont été reproduites avec le plus grand soin, compte tenu de la condition et de la netteté de l'exemplaire filmé, et en conformité avec les conditions du contrat de filmage.

Les exemplaires originaux dont la couverture en papier est imprimée sont filmés en commençant par le premier plat et en terminant soit par la dernière page qui comporte une empreinte d'impression ou d'illustration, soit par le second plat, selon le cas. Tous les autres exemplaires originaux sont filmés en commençant par la première page qui comporte une empreinte d'impression ou d'illustration et en terminant par la dernière page qui comporte une telle empreinte.

Un des symboles suivants apparaîtra sur la dernière image de chaque microfiche, selon le cas: le symbole \rightarrow signifie "A SUIVRE", le symbole ∇ signifie "FIN".

Les cartes, planches, tableaux, etc., peuvent être filmés à des taux de réduction différents. Lorsque le document est trop grand pour être reproduit en un seul cliché, il est filmé à partir de l'angle supérieur gauche, de gauche à droite, et de haut en bas, en prenant le nombre d'images nécessaire. Les diagrammes suivants illustrent la méthode.

errata
to

pelure,
en à



RETURN OF CONVICTIONS

THE COUNTY of MIDDLESEX, BETWEEN THE 14th DAY of JUNE AND THE 14th DAY of SEPTEMBER, 1865.

No.	Names of Convicting Justices.	Amount of Penalty	When paid, or to be paid to the Justice.	To whom paid by the Justice.	If not paid, why not; and General Remarks.
...	Hugh Carr, Iohael	\$ 1 00	Forthwith	Half to informer, and half to Tp. Treas.	Dismissed.
...	William Moore	10 00	October 3rd	County Treasurer	Remitted to \$1 and costs.
...	Do	10 25	do	To John Webb.	
...	William Stanley	2 00	June 30th	County Treasurer.	
...	Robert Summers	1 50	Forthwith	Township Treasurer.	Remitted, on statute labor being done.
...	James Evans	2 00	do	do	Bound over to keep the peace.
...	Robert Thompson	2 00	do	do	do
...	Do	40 00	do	do	Appealed.
...	J. McArthur and J. A. Seoon	50 00	Forthwith	do	do
...	John McArthur	50 00	do	do	do
...	Do	50 00	do	do	do
...	Do	50 00	do	do	do
...	John McArthur	50 00	do	do	do
...	Do	0 50	do	Half to informer and half to Tp. Treas.	
...	Do	40 00	do	Half to prosecutor, and half to Tp. Treas.	
...	W. Edwards	1 00	Day of trial	Township Treasurer.	
...	John McArthur	40 00	Forthwith	do	Committed for 30 days.
...	Do	1 00	do	Township Treasurer of Adelaide.	
...	C. Colovin	2 00	February 24	do	The party ran off to the States.
...	W. Balkwill & Gardner Elwood.	8 00	do	do	Discharged.
...	Gardner Elwood	4 00	September 20	To be paid to County Treasurer.	Appealed.
...	Do	1 00	Immediately	To be paid to Township Treasurer.	20 days in gaol.
...	Do	1 00	do	do	By-law defective.
...	Do	1 00	do	do	Referred to County Attorney.
...	James Owrey	4 00	do	do	30 days in gaol.
...	Do	1 00	June 29	To Treasurer London,	
...	Do	2 00	June 29	London Treas. ref.	
...	Do	1 00	June 29	Treasurer.	
...	Do	1 00	June 29	do	
...	Do	1 00	June 29	do	
...	Do	21 00	July 6th	do	Appealed.
...	Do	1 00	do	do	Not paid.
...	Do	1 00	August 21st	To Treasurer.	do
...	Robert Thompson and Alexander Campbell	2 00	In one month	do	Committed for want of sureties to answer charge when called for.
...	Robert Thompson	2 00	do	Township Treasurer.	
...	Thomas Burns	2 00	do	Township Treasurer of McGillivray.	
...	Do	1 00	Forthwith	do	
...	Jas. Goulding	1 00	In 10 days	do	
...	James Owrey	1 00	September 7th	London Township Treasurer.	Costs, \$4.55.
...	Do	1 00	do	do	
...	Do	1 00	September 11th	Treasurer of Westminster.	
...	Hugh Carmichael	1 00	Forthwith	Half to informer and half to Tp. Treas.	
...	Robert Craik and Henry Wm. Niles	20 00	do	do	To be paid to complainant.
...	James Owrey	1 00	do	do	Appealed.
...	William Barnam	1 00	do	do	In default of payment, to be committed to gaol for 10 days.
...	P. Mellharzy	2 50	do	do	
...	William Barnam	10 00	do	do	
...	W. R. Vining and J. Evans	10 00	do	do	
...	William Taylor	2 00	do	do	Paid to Convicting Justice.
...	John McArthur	0 50	do	do	Paid to Township Treasurer.
...	John A. Seoon	9 25	do	do	To be paid to R. Laird, toll-gate keeper.
...	J. A. Seoon & J. Thompson	8 25	In one month	To prosecutor.	
...	J. A. Seoon	3 25	In 21 days	do	
...	Do	0 50	In one month	do	
...	Do	0 50	In one month	do	
...	Do	0 50	In one month	do	
...	Do	0 50	In one month	do	
...	Do	1 00	In 4 days	County Treasurer.	
...	B. Switzer	3 00	do	To complainant.	
...	William Stanley	1 00	April 13th	Township Treasurer.	
...	H. B. Hodgins	4 00	Forthwith	County Treasurer.	
...	John H. Priestley	30 00	do	do	Settled.
...	Do	20 00	do	do	None.
...	Do	14 00	In 21 days	do	Not paid.
...	Do	33 02	do	do	do
...	Do	31 86	do	do	
...	Do	6 50	do	do	
...	Do	27 00	do	do	
...	Do	40 00	do	do	
...	Do	34 20	do	do	
...	Do	5 64	do	do	
...	John Cook	1 00	November 1st	Township Treasurer.	Not paid; to be paid in one month.
...	William Moore	1 00	do	do	Committed to gaol for his trial, 2nd Sept.
...	William Fitzgerald	1 00	do	do	Bound over to keep the peace.
...	Joseph Siddall and Wm. W. W. W.	5 00	September 6th	County Treasurer.	Committed for want of bail.
...	J. Siddall and C. W. W.	4 00	June 13th	do	
...	James Owrey	1 00	June 20th	Treasurer of London Township.	
...	Do	4 00	June 22nd	Treasurer.	
...	Do	3 75	do	do	
...	William Taylor	9 00	do	do	Paid to Road Master.
...	Do	5 00	do	do	Township Treasurer.
...	J. Siddall and S. Wm. Stanley	4 00	do	do	do
...	Wm. Stanley	3 00	do	do	Appealed.
...	James Owrey	1 00	do	do	To be paid to complainant.

Returns made to between the above periods.

J. B. ASKIN.
CLERK OF THE PEACE.

