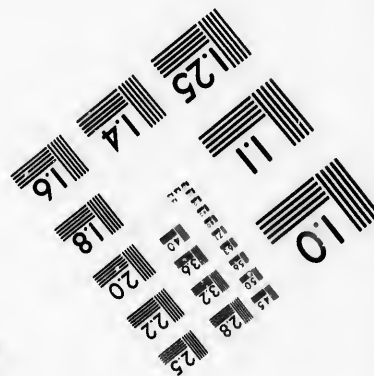
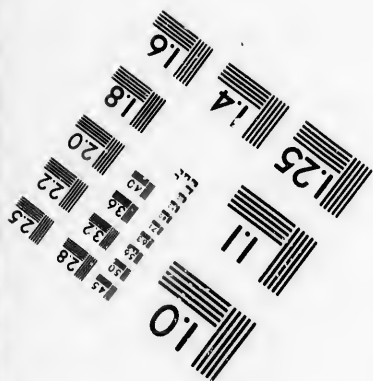
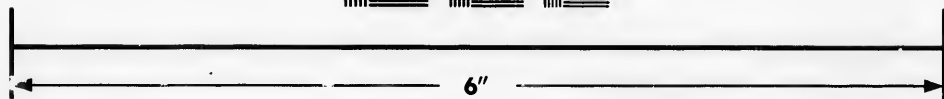
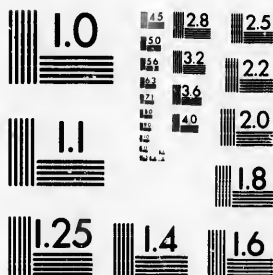


**IMAGE EVALUATION
TEST TARGET (MT-3)**



**Photographic
Sciences
Corporation**

23 WEST MAIN STREET
WEBSTER, N.Y. 14580
(716) 872-4503



**CIHM/ICMH
Microfiche
Series.**

**CIHM/ICMH
Collection de
microfiches.**



Canadian Institute for Historical Microreproductions / Institut canadien de microreproductions historiques



© 1986

Technical and Bibliographic Notes/Notes techniques et bibliographiques

The Institute has attempted to obtain the best original copy available for filming. Features of this copy which may be bibliographically unique, which may alter any of the images in the reproduction, or which may significantly change the usual method of filming, are checked below.

L'Institut a microfilmé le meilleur exemplaire qu'il lui a été possible de se procurer. Les détails de cet exemplaire qui sont peut-être uniques du point de vue bibliographique, qui peuvent modifier une image reproduite, ou qui peuvent exiger une modification dans la méthode normale de filmage sont indiqués ci-dessous.

- | | |
|--|--|
| <input type="checkbox"/> Coloured covers/
Couverture de couleur | <input type="checkbox"/> Coloured pages/
Pages de couleur |
| <input type="checkbox"/> Covers damaged/
Couverture endommagée | <input type="checkbox"/> Pages damaged/
Pages endommagées |
| <input type="checkbox"/> Covers restored and/or laminated/
Couverture restaurée et/ou pelliculée | <input type="checkbox"/> Pages restored and/or laminated/
Pages restaurées et/ou pelliculées |
| <input type="checkbox"/> Cover title missing/
Le titre de couverture manque | <input checked="" type="checkbox"/> Pages discoloured, stained or foxed/
Pages décolorées, tachetées ou piquées |
| <input type="checkbox"/> Coloured maps/
Cartes géographiques en couleur | <input type="checkbox"/> Pages detached/
Pages détachées |
| <input type="checkbox"/> Coloured ink (i.e. other than blue or black)/
Encre de couleur (i.e. autre que bleue ou noire) | <input checked="" type="checkbox"/> Showthrough/
Transparence |
| <input type="checkbox"/> Coloured plates and/or illustrations/
Planches et/ou illustrations en couleur | <input type="checkbox"/> Quality of print varies/
Qualité inégale de l'impression |
| <input type="checkbox"/> Bound with other material/
Relié avec d'autres documents | <input type="checkbox"/> Includes supplementary material/
Comprend du matériel supplémentaire |
| <input type="checkbox"/> Tight binding may cause shadows or distortion
along interior margin/
La reliure serrée peut causer de l'ombre ou de la
distorsion le long de la marge intérieure | <input type="checkbox"/> Only edition available/
Seule édition disponible |
| <input type="checkbox"/> Blank leaves added during restoration may
appear within the text. Whenever possible, these
have been omitted from filming/
Il se peut que certaines pages blanches ajoutées
lors d'une restauration apparaissent dans le texte,
mais, lorsque cela était possible, ces pages n'ont
pas été filmées. | <input type="checkbox"/> Pages wholly or partially obscured by errata
slips, tissues, etc., have been refilmed to
ensure the best possible image/
Les pages totalement ou partiellement
obscurcies par un feuillet d'errata, une pelure,
etc., ont été filmées à nouveau de façon à
obtenir la meilleure image possible. |
| <input checked="" type="checkbox"/> Additional comments: [Printed ephemera] 1 sheet (verso blank)
Commentaires supplémentaires: | |

This item is filmed at the reduction ratio checked below/
Ce document est filmé au taux de réduction indiqué ci-dessous.

10X	12X	14X	16X	18X	20X	22X	24X	26X	28X	30X	32X
					/						

The copy filmed here has been reproduced thanks to the generosity of:

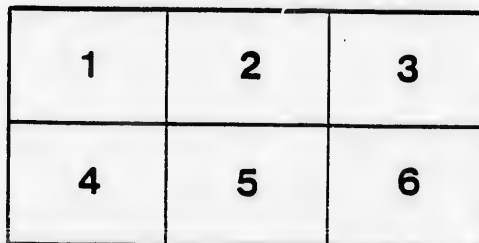
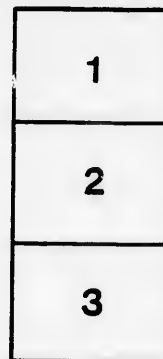
Manuscript Division
Public Archives of Canada

The images appearing here are the best quality possible considering the condition and legibility of the original copy and in keeping with the filming contract specifications.

Original copies in printed paper covers are filmed beginning with the front cover and ending on the last page with a printed or illustrated impression, or the back cover when appropriate. All other original copies are filmed beginning on the first page with a printed or illustrated impression, and ending on the last page with a printed or illustrated impression.

The last recorded frame on each microfiche shall contain the symbol \rightarrow (meaning "CONTINUED"), or the symbol ∇ (meaning "END"), whichever applies.

Maps, plates, charts, etc., may be filmed at different reduction ratios. Those too large to be entirely included in one exposure are filmed beginning in the upper left hand corner, left to right and top to bottom, as many frames as required. The following diagrams illustrate the method:



L'exemplaire filmé fut reproduit grâce à la générosité de:

Division des manuscrits
Archives publiques du Canada

Les images suivantes ont été reproduites avec le plus grand soin, compte tenu de la condition et de la netteté de l'exemplaire filmé, et en conformité avec les conditions du contrat de filmage.

Les exemplaires originaux dont la couverture en papier est imprimée sont filmés en commençant par le premier plat et en terminant soit par la dernière page qui comporte une empreinte d'impression ou d'illustration, soit par le second plat, selon le cas. Tous les autres exemplaires originaux sont filmés en commençant par la première page qui comporte une empreinte d'impression ou d'illustration et en terminant par la dernière page qui comporte une telle empreinte.

Un des symboles suivants apparaîtra sur la dernière image de chaque microfiche, selon le cas: le symbole \rightarrow signifie "A SUIVRE", le symbole ∇ signifie "FIN".

Les cartes, planches, tableaux, etc., peuvent être filmés à des taux de réduction différents. Lorsque le document est trop grand pour être reproduit en un seul cliché, il est filmé à partir de l'angle supérieur gauche, de gauche à droite, et de haut en bas, en prenant le nombre d'images nécessaire. Les diagrammes suivants illustrent la méthode.

rrata
to

pelure,
n à



PUBLIC NOTICE

TENDERS will be received at
the **EIGHTEENTH** day of **MAY** next, from such persons as
furnishing all the Supplies necessary for

MAINTAINING ON THE SEVERAL LIGHT-HOUSES IN

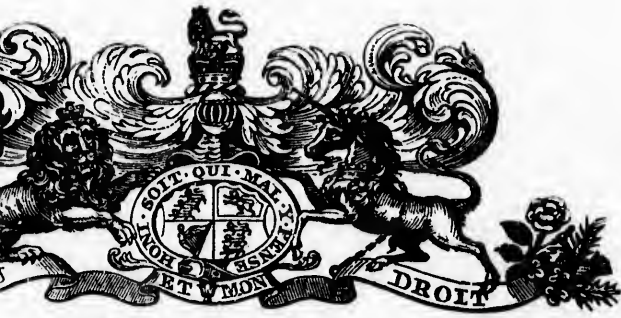
Noted below, from the 1st day of July, next ensuing

1. Nine-mile Point, near Kingston.
2. False Ducks Island, in Lake Ontario.
3. Point Petre, in District of Prince Edward.
4. Presqu'île, in District of New Brunswick.
5. Gull Island, near Cobourg.
6. Gibraltar Point, at Toronto.
7. Harbour Light at do.
8. Oakville Pier, in the District of Ontario.
9. Burlington Canal, in do.
10. Point au Pelee Island, in Lake Ontario.
11. Bois Blanc Island, near Amherst.
12. Mouth of the River Thames.

5. Gull Island, near Cobourg.

6. Gibraltar Point, at Toronto.

12754



C NOTICE.

received at this Office, until **MONDAY**,
next, from such persons as may be willing to Contract for

NING THE LIGHTS

THE SEVERAL

S IN THIS PROVINCE,

uly, next ensuing, until the 1st day of July, 1841.

near Kingston.

nd, in Lake Ontario.

District of Prince Edward.

istrict of Newcastle.

e Cobourg.

at Toronto.

t do.

the District of Gore.

, in do.

Island, in Lake Erie.

d, near Amherstburgh.

er Thames.

r Cobourg

5. Gull Island, near Cobourg.
6. Gibraltar Point, at Toronto.
7. Harbour Light at do.
8. Oakville Pier, in the District of
9. Burlington Canal, in do.
10. Point au Pelee Island, in Lake
11. Bois Blanc Island, near Amherst
12. Mouth of the River Thames.

The Tenders must, in particular, exhibit the Articles undermentioned will be demanded and required at the several Light-Houses.

**Winter-pressed Sperm Oil, of
Lamp-Wicks, of suitable size
Lamps.**

Glass for Lanterns of Light-

Glass Tubes for Lamps.

Soap: Whiting: Coal: Sponges

Chamois Skins, and Cotton Cloth

It is also to be understood, that the Articles above mentioned will be required, but which cannot be now obtained at the market prices.

Two Sureties will be required for the execution of the Contract.

Individuals proposing to tender, may make such stipulations which they may desire, on making application to the Office.

JOHN

*Inspector General's Office,
Toronto, 13th April, 1840.*

r Cobourg.
at Toronto.
at do.
the District of Gore.
, in do.
Island, in Lake Erie.
ad, near Amherstburgh.
ver Thames.

particular, express the lowest terms on which
l will be delivered, from time to time, as
t-Houses.

erm Oil, of good quality.
uitable sizes.

of Light-Houses.

Lamps.

oal: Sponge.

l Cotton Cloths, for rubbers.

stood, that such other necessaries as may
not be now specified, shall be supplied at

required for the due performance of the

o tender, may obtain any further explana-
e, on making personal application at this

JOHN MACAULAY,

Inspector General, P. P. A.

Printed at the Upper Canada Gazette Office.

