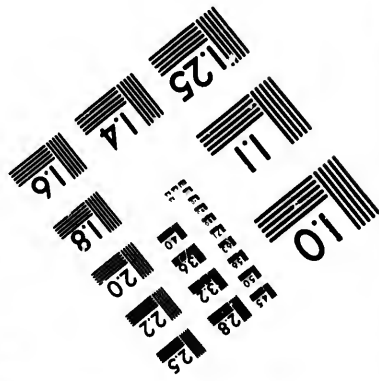
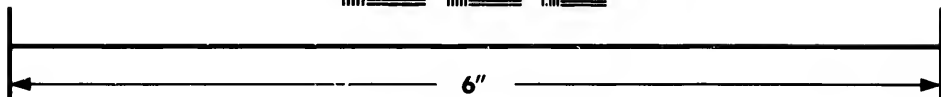
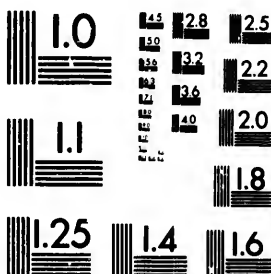


**IMAGE EVALUATION
TEST TARGET (MT-3)**



**Photographic
Sciences
Corporation**

23 WEST MAIN STREET
WEBSTER, N.Y. 14580
(716) 872-4503

28
25
22
20
18

**CIHM/ICMH
Microfiche
Series.**

**CIHM/ICMH
Collection de
microfiches.**



Canadian Institute for Historical Microreproductions / Institut canadien de microreproductions historiques

01

© 1983

Technical and Bibliographic Notes/Notes techniques et bibliographiques

The Institute has attempted to obtain the best original copy available for filming. Features of this copy which may be bibliographically unique, which may alter any of the images in the reproduction, or which may significantly change the usual method of filming, are checked below.

L'Institut a microfilmé le meilleur exemplaire qu'il lui a été possible de se procurer. Les détails de cet exemplaire qui sont peut-être uniques du point de vue bibliographique, qui peuvent modifier une image reproduite, ou qui peuvent exiger une modification dans la méthode normale de filmage sont indiqués ci-dessous.

Coloured covers/
Couverture de couleur

Coloured pages/
Pages de couleur

Covers damaged/
Couverture endommagée

Pages damaged/
Pages endommagées

Covers restored and/or laminated/
Couverture restaurée et/ou pelliculée

Pages restored and/or laminated/
Pages restaurées et/ou pelliculées

Cover title missing/
Le titre de couverture manque

Pages discoloured, stained or foxed/
Pages décolorées, tachetées ou piquées

Coloured maps/
Cartes géographiques en couleur

Pages detached/
Pages détachées

Coloured ink (i.e. other than blue or black)/
Encre de couleur (i.e. autre que bleue ou noire)

Show-through/
Transparence

Coloured plates and/or illustrations/
Planches et/ou illustrations en couleur

Quality of print varies/
Qualité inégale de l'impression

Bound with other material/
Relié avec d'autres documents

Includes supplementary material/
Comprend du matériel supplémentaire

Tight binding may cause shadows or distortion along interior margin/
La reliure serrée peut causer de l'ombre ou de la distortion le long de la marge intérieure

Only edition available/
Seule édition disponible

Blank leaves added during restoration may appear within the text. Whenever possible, these have been omitted from filming/
Il se peut que certaines pages blanches ajoutées lors d'une restauration apparaissent dans le texte, mais, lorsque cela était possible, ces pages n'ont pas été filmées.

Pages wholly or partially obscured by errata slips, tissues, etc., have been refilmed to ensure the best possible image/
Les pages totalement ou partiellement obscurcies par un feuillet d'errata, une pelure, etc., ont été filmées à nouveau de façon à obtenir la meilleure image possible.

Additional comments:
Commentaires supplémentaires:

This item is filmed at the reduction ratio checked below/
Ce document est filmé au taux de réduction indiqué ci-dessous.

10X	14X	18X	22X	26X	30X
<input type="checkbox"/>	<input type="checkbox"/>	<input type="checkbox"/>	<input checked="" type="checkbox"/>	<input type="checkbox"/>	<input type="checkbox"/>
12X	16X	20X	24X	28X	32X

The copy filmed here has been reproduced thanks to the generosity of:

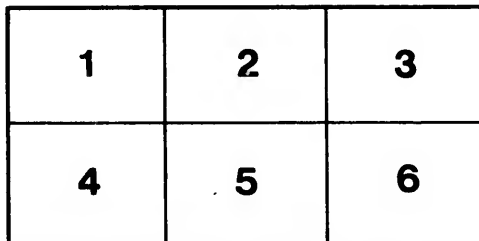
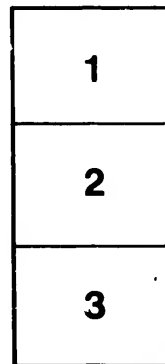
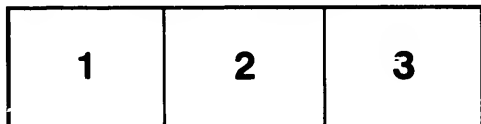
Douglas Library
Queen's University

The images appearing here are the best quality possible considering the condition and legibility of the original copy and in keeping with the filming contract specifications.

Original copies in printed paper covers are filmed beginning with the front cover and ending on the last page with a printed or illustrated impression, or the back cover when appropriate. All other original copies are filmed beginning on the first page with a printed or illustrated impression, and ending on the last page with a printed or illustrated impression.

The last recorded frame on each microfiche shall contain the symbol \rightarrow (meaning "CONTINUED"), or the symbol ∇ (meaning "END"), whichever applies.

Maps, plates, charts, etc., may be filmed at different reduction ratios. Those too large to be entirely included in one exposure are filmed beginning in the upper left hand corner, left to right and top to bottom, as many frames as required. The following diagrams illustrate the method:



L'exemplaire filmé fut reproduit grâce à la générosité de:

Douglas Library
Queen's University

Les images suivantes ont été reproduites avec le plus grand soin, compte tenu de la condition et de la netteté de l'exemplaire filmé, et en conformité avec les conditions du contrat de filmage.

Les exemplaires originaux dont la couverture en papier est imprimée sont filmés en commençant par le premier plat et en terminant soit par la dernière page qui comporte une empreinte d'impression ou d'illustration, soit par le second plat, selon le cas. Tous les autres exemplaires originaux sont filmés en commençant par la première page qui comporte une empreinte d'impression ou d'illustration et en terminant par la dernière page qui comporte une telle empreinte.

Un des symboles suivants apparaîtra sur la dernière image de chaque microfiche, selon le cas: le symbole \rightarrow signifie "A SUIVRE", le symbole ∇ signifie "FIN".

Les cartes, planches, tableaux, etc., peuvent être filmés à des taux de réduction différents. Lorsque le document est trop grand pour être reproduit en un seul cliché, il est filmé à partir de l'angle supérieur gauche, de gauche à droite, et de haut en bas, en prenant le nombre d'images nécessaire. Les diagrammes suivants illustrent la méthode.

ails
du
odifier
une
image

rrata
o

pelure,
à

tered according to
and eight hundre
of Agriculture.]

E

U

CALF

Barrister at L
incipal and Pro
w and Phone
ouble-Entry Bod
lography, &c.

I

Not to possess, with
mate acquaintance wi
es us at the mercy
lenal resources.

To read history intell
ory and geography ar

ST

J. FitzGerald, 3

Price 25 cents each

**Queen's University
Library**

KINGSTON, ONTARIO

72
reared according to the Act of the Parliament of Canada, in the year of our Lord, one thousand eight hundred and seventy-two, by Caleb Platt Simpson, in the Office of the Minister of Agriculture.]

E L E M E N T S

OF

Mnemonic Geography,

BY

CALEB PLATT SIMPSON,

Barrister at Law, Author of Simpson's Universal Alphabet, Principal and Proprietor of the St. Catharines Commercial College, and Phonographic Institute, Lecturer on Commercial Law, Double-Entry Book-Keeping, Spencerian Penmanship, Phonography, Geography, &c.

PART FIRST.

Not to possess, with a general knowledge of the leading features of foreign countries, an intimate acquaintance with the geography of our own, impedes our material development, and leaves us at the mercy of any foreigner, who may choose to speak disparagingly of our national resources.

To read history intelligently, an intimate acquaintance with geography is necessary; hence history and geography are inseparable requisites to a proper knowledge of any country.

ST. CATHARINES. ONTARIO.

J. FitzGerald, Book and Job Printer, St. Catharines, Ontario.
1872.

Price 25 cents each, or 5 for \$1. Sent by mail everywhere, on receipt of money.
Address the Author, St. Catharines, Ontario.

L
F1028 127256

PREFACE.

The counties of our leading Provinces should be known to every Canadian, young or old, as a preliminary step to a more thorough understanding of our material advantages and resources, and with this view the author has devised the following system, as a help in that direction.

These tables are not designed to take the place of the more elaborate and expensive geographical works, except as a first book to be placed in the hands of learners. It is believed, and the author's experience supports the conviction, that a large map with colored divisions, assisted by easily remembered key-letters or key-words, are powerful aids to the mind, in its effort to learn and retain considerable numbers of unconnected names. Not only do key-words help to call to mind long lists of such names, but they stamp them upon the memory in such a manner, that, without being burdensome, they are not easily forgotten.

In about three weeks of half-hour daily lessons, a class of small boys were enabled to name, in consecutive order, the FORTY-SIX counties of Ontario, beginning on the Georgian Bay, and following the water line down the Lakes Huron, Erie, Ontario, the River St. Lawrence, and up the Ottawa, with the interior counties. They also, at the same time, completely mastered the SIXTY counties of Quebec, in their order on the map; the FOURTEEN counties of New Brunswick; the EIGHTEEN counties of Nova Scotia, with the counties of Prince Edward's Isle, making, in all, ONE HUNDRED AND FORTY-ONE COUNTIES, or more than they could learn and remember in three months, in the ordinary mode of teaching.

They could also give the location of each county with the name of the county to the east or west of it, as they are taken in this work in the order in which they appear upon the map. After the counties are thoroughly mastered, the students are better prepared to understand the physical features of the country, with its soil and productions, which is their next step, and for which they are referred to the larger works.

This little work, embracing only a few of the leading features of America and Europe, is doubtless imperfectly executed, yet it is submitted to the judgment of a candid public, with the hope that it may be useful in promoting an essential branch of youthful instruction, and perhaps, in stimulating others to acquaint themselves with the geography of their country.

C. P. SIMPSON.

College Hall, February 5th A. D. 1872.

For "Directions to the Learner," see third page of cover.

10

NORTH AMERICA.

COUNTRIES.

Area, 8,350,000 Square Miles. Population, 54,000,000. Length, 4,700 Miles. Breadth, 3,000 M.

COUNTRY :—Greenland, British America, United States, Mexico, Guatemala, San Salvador, Honduras, Nicaragua.
 KEY-WORD :—GREENLAND, BRITISH AMERICA, UNITED STATES, MAY GOD STILL SEND HIS NEEDFUL
 CAPITAL :—Ottawa, Washington, Mexico, New Guatemala, San Salvador, Comayagua, Leon.
 COUNTRY :—Costa Rica, British Honduras.
 KEY-WORD :—CHRISTIAN REDEMPTION BEFORE HIM.
 CAPITAL :—San José, Belize.

12

SOUTH AMERICA.

COUNTRIES,

Area, 7,150,000 Square Miles, Population, 26,000,000. Length, 4,600 Miles. Breadth, 3,200 M.

COUNTRY :—Columbia, Venezuela, British Guiana, Dutch Guiana, French Guiana, Brazil, Paraguay, Uruguay,
 KEY-WORD :—COULD VIRTUE'S CARACAS, GEORGETOWN, PARAMARIBO, CAYENNE, RIO JANEIRO, ASSUMPÇÃO, MONTE VIDEO,
 CAPITAL :—Bogotá, Caracas, Georgetown, Paramaribo, Cayenne, Rio Janeiro, Assumpção, Monte Video,
 COUNTRY :—Laplata, Patagonia, Chili, Bolivia, Peru, Ecuador.
 KEY-WORD :—LIBERTY'S CAN BE FEARABLY ENJOYED.
 CAPITAL :—Buenos Aytes, Santiago, Chuquisaca, Lima, Quito.

16

EUROPE.

NATIONALITIES.

Area, 3,800,000 Square Miles. Population, 288,000,000. Length, 3,400 Miles. Breadth, 2,400 M.

9 NORTHERN AND WESTERN NATIONS.

NATION :—Great Britain & Ireland, Norway & Sweden, Russia, Denmark, Holland Belgium, France, Spain, Portugal
 KEY-WORD :—GREAT BRITAIN & IRELAND NOW SHEET REFERENCE DUE HIM BY FAITHFUL SPOTLESS PEOPLE
 CAPITAL :—London, Stockholm, St. Petersburg, Copenhagen, Amsterdam, Brussels, Paris, Madrid, Lisbon.

7 EASTERN AND SOUTHERN NATIONS.

NATION :—German States, Prussia, Austria, Italy, Switzerland, Turkey in Europe, Greece.
 KEY-WORD :—GIVING SOLEMN PRAISE ALWAYS IN SONGS TO God.
 CAPITAL :—Berlin, Vienna, Rome, Bern, Constantinople, Athens.

Province of Ontario.

Area, 180,000 Square Miles. Population, 2,000,000.
CAPITAL, TORONTO.

COUNTIES.

6 WESTERN COUNTIES ON GEORGIAN BAY, LAKE HURON AND THE ST. CLAIR RIVER.	
COUNTY:—	Simcoe, Huron, Lambton, Bothwell,
KEY-WORD:—	SHIPS GO Grey, Bruce, Huron's LOVELY Bothwell,
COUNTY TOWN:—	Barrie, Owen Sound, Walkerton, Goderich, Sarnia, Bothwell.
8 COUNTIES ON LAKE ERIE.	
COUNTY:—	Essex, Kent, (Bothwell), Elgin, Norfolk, Haldimand, Monk, Welland,
KEY-WORD:—	ERIE, KIND SANDWICH, CHATHAM, NEVER SIMCOE, CAYUGA, MUCH WATER,
COUNTY TOWN:—	Sandwich, Chatham, St. Thomas, Simcoe, Cayuga, Dunnville, Welland.
13 COUNTIES ON LAKE ONTARIO AND BAY QUINTE.	
COUNTY:—	Lincoln, Wentworth, Halton, Peel, York, Ontario, Durham, Northumberland,
KEY-WORD:—	LAKES WHICH HAVE PROMOTED YOUNG ONTARIO'S DOMINION FAVY,
COUNTY TOWN:—	St. Catharines, Hamilton, Milton, Brantford, Toronto, Whitby, Port Hope, Cobourg,
COUNTY:—	Prince Edward, Hastings, Lennox, Addington, Frontenac.
KEY-WORD:—	POURING EVER HASTLEY LEAVE A FALL,
COUNTY TOWN:—	Pictou, Belleville, Napanee, Bath, Kingston, Kingstons
5 COUNTIES ON THE RIVER ST. LAWRENCE.	
COUNTY:—	Leeds, Stormont, Glengary,
KEY-WORD:—	LEAVING BROCKVILLE, MORRISBURG, ST. LAWRENCE, GLENGLIDE,
COUNTY TOWN:—	Brockville, Morrisburg, Prescott, Cornwall, Alexandria,
5 COUNTIES ON THE OTTAWA.	
COUNTY:—	Prescott, Russell, Carleton, Lanark, Renfrew, (THE OTTAWA)
KEY-WORD:—	PAST L'ORIGINAL, CARLETON'S OULAWA, CARLETON'S LAVING FORTH, RIVER, PEMBROKE,
COUNTY TOWN:—	L'Original, Carleton Place, Ottawa, Carleton Place, Perth,
9 INTERIOR COUNTIES.	
COUNTY:—	Middlesex, Oxford, Brant, Perth, Waterloo, Wellington, Cardwell, Victoria, Peterboro.
KEY-WORD:—	MAY BE BRANT, PRESERVED WHEATBER, BERLIN, CORRUPTING ALBION, VICE PREVAILS, PETERBORO,
COUNTY TOWN:—	London, Woodstock, Brantford, Stratford, Berlin, Guelph, Albion, Lindsay, Peterboro.

Province of Quebec.

Area, 210,000 Square Miles. Population, 1,400,000.

COUNTIES.

Province of Quebec.

Area, 210,000 Square Miles.

Population, 1,400,000.

CAPITAL, QUEBEC.

COUNTIES.

9 COUNTIES ON THE OTTAWA.

COUNTY:—	Pontiac,	Ottawa,	Argenteuil,	Two Mountains,	Vaudreuil,	Soulanges,	Jacques Cartier,
KEY-WORD:—	P AST	O T TAWA	A ND	T OWARDS	U PPER	S T. LAWRENCE,	JACQUES CARTIER
COUNTY TOWN:—	Portage du fort,	Aylmer,	Lachute,	St. Schastique,	Vaudreuil,	Coteau Landing,	Lachine,
KEY-WORD:—	H ERE	L A VHL					
COUNTY TOWN:—	Hochelaga,	St. Vincent de Paul.					

14 COUNTIES ON THE NORTH BANK OF THE ST. LAWRENCE RIVER.

COUNTY:—	Terrebone,	L'Assomption,	Montcalm,	Joliette,	Berthier,	Maskinonge,	St Maurice,
KEY-WORD:—	H APPY LAND	A S S U M E D.	M A Y	I	B E	M A D E	S T. M A R T Y'S
COUNTY TOWN:—	Terrebone.	J'Assumption,	Rawdon,	Industry,	Berthier,	Riviere de Loup.	Three Rivers,
KEY-WORD:—	C H I L D	P E R F E C T	Q U I E T	M I L D.	C H A R L E V O I X,	C H I C O U T I M I,	S A G E N A Y.
COUNTY TOWN:—	Batiscan,	Portneuf,	Quebec,	Montmorency,	St. Irene,	Chicoutimi,	S O X.
			Quebec,	Chateau Richer,		Chicoutimi,	Tadoussac.

18 COUNTIES ON THE SOUTH BANK OF THE ST. LAWRENCE (INCLUDING BONAVENTURE).

COUNTY:—	Huntingdon,	Beauharnois,	Laprairie,	Chambly,	Vercheres,	Richieu,	Yamaska,	Nicolet,	Lotbiniere,
KEY-WORD:—	H U N T I N G D O N.	B R O U G H T	L A P R A I R I E	C H A M B L Y	U N T O	R I C H A R D,	Y A M A S K A,	N I C O L E T'S	L O N G
COUNTY TOWN:—	Huntingdon.	Beauharnois,	Laprairie,	Chambly,	Vercheres,	Sorel,	Yamaska,	Nicolet,	Lotbiniere,
COUNTY:—	Levis,	Bellechasse,	Montmagny,	L'Islet,	Kamouraska,	Temiscouata,	Rimouski,	Gaspé,	Bonaventure
KEY-WORD:—	L O P T Y	B E A U T I F U L	M A J E S T I C	L O O K I N G	R I T C H I E N	T O	R I M O U S K I	G A S P E	B O N A V E N T U R E

8 INLAND COUNTIES NORTH OF THE ST. LAWRENCE.

COUNTY:—	Chateaugay,	Napierville,	St. John's,	Iberville,	St. Hyacinthe,	Rouville,	Bagot,	Dorchester.
KEY-WORD:—	C O M E	N O W	S T. J O H N	I	S T. H Y A C I N T H I E,	R E A D I L Y	R O U V I L L E	D O W N.
COUNTY TOWN:—	St. Martin,	St. Remi,	St. John's,	Iberville,	St. Hyacinthe,	St. Mary,	St. Liboire,	St. Anselme.

11 EASTERN TOWNSHIPS (OR COUNTIES).

COUNTY:—	Missisquoi,	Brome,	Shefford,	Drummond,	Arthabasca,	Megantic,
KEY-WORD:—	M I S S I S Q U O I,	B R O M E,	S H O U L D	D R U M	A N D	M E G A N T I C,
COUNTY TOWN:—	Bedford,	Knowlton,	Waterloo,	Drummondville,	St. Christophe,	A B L I O R A T E
COUNTY:—	Beauce,	Wolf,	Richmond,	Compton,	St. Francois,	I N V E R C I S,
KEY-WORD:—	B E F O R E	W E	R E A L L Y	C A N	S E P A R A T E.	
COUNT. TOWN:—	St. Francois,	Wolfston,	Richmond,	Compton,	Stansstead.	

14

Province of New Brunswick.

COUNTIES.

Area, 27,000 Square Miles. Population, 320,000. Length, 210 Miles. Breadth, 190 Miles.

5 WESTERN COUNTIES.

COUNTY:— Victoria, Carleton, York, Sunbury, Queen's
 KEY-WORD:— VICTORIA CANADA'S YOUTHFUL SENECA'S QUEEN
 COUNTY TOWN:— Grand Falls, Woodstock, Fredericton, Oranoc, Georgetown.

4 SOUTHERN COUNTIES.

COUNTY:— Charlotte, St. John's, King's, Albert,
 KEY-WORD:— CLOSE JOYFULLY KINGLY ALBERT
 COUNTY TOWN:— St. Andrew's St. John's Kingston, Hopewell.

5 EASTERN AND NORTHERN COUNTIES.

COUNTY:— Westmoreland, Kent, Northumberland, Gloucester, Restigouche.
 KEY-WORD:— WITH KIND NATURE'S GRACEFUL REGION
 COUNTY TOWN:— Dorchester, Richibucto, Newcastle, Bathurst, Dalhousie.

18

Province of Nova Scotia.

COUNTIES.

Area, 19,500 Square Miles. Population, 380,000. Length, 390 Miles. Breadth, 160 Miles.

5 COUNTIES ON NORTHUMBERLAND STRAITS AND GULF OF ST. LAWRENCE.

COUNTY:— Cumberland, Colchester, Pictou, Sidney, Inverness.
 KEY-WORD:— CASADA CHEERFULLY PROVIDING SOLDIERS IN
 COUNTY TOWN:— Amherst, Truro, Pictou, Antigonish, Port Hood.

9 COUNTIES ON THE ATLANTIC COAST.

COUNTY:— Victoria, Cape Breton, Richmond, Guysboro, Halifax, Lunenburg, Queen's, Shelburne, Yarmouth.
 KEY-WORD:— VICTORIA'S CHIEFEN BATTALIONS ROYALLY GUARDS HER LOVING QUEEN
 COUNTY TOWN:— Baddeck, Sidney, Antigonish, Guysboro, Halifax, Lunenburg, Liverpool, Yarmouth.

4 COUNTIES ON THE BAY OF FUNDY AND MINE'S BASIN.

COUNTY:— Digby, Annapolis, King's, Hants.
 KEY-WORD:— DO AND KEEP HER.
 COUNTY TOWN:— Digby, Annapolis, Kentville, Windsor.

48

United States of America.

STATES & TERRITORIES.

Area, 3,400,000 Square Miles. Population, 40,000,000.

Length, 2,700 Miles.

KEY-WORD:— DO AND Kentville, Windsor.
 COUNTY TOWN:— Annapolis, Digby.

48 **United States of America.** STATES & TERRITORIES.
 Population, 40,000,000. Length, 2,700 Miles. Breadth, 1,600 Miles.

16 ATLANTIC STATES.

STATE:—Maine, New Hampshire, Vermont, Massachusetts, Rhode Island, Connecticut, New York, New Jersey
 KEY-WORD:—MEANING NO HARM VIRTUE MAY READILY INSURE CONTEST NO YOUTH NOR JUDGING
 CAPITAL:—Augusta, Concord, Montpelier, Boston, Providence, Hartford, Albany, Trenton.
 STATE:—Pennsylvania, Delaware, Virginia, North Carolina, South Carolina, Georgia, Florida.
 KEY-WORD:—PHILOSOPHER MAKE VIRTUE'S NOBLES CHARACTER SANCTION CORRUPTIO GREYHOES FALLACIES.
 CAPITAL:—Harrisburg, Dover, Annapolis, Richmond, Raleigh, Columbia, Milledgeville, Tallahassee.

6 (7) STATES ON THE GULF AND REPUBLIC OF MEXICO.

STATE:—(Florida), Alabama, Mississippi, Louisiana, Texas, New Mexico, Arizona.
 KEY-WORD:— AND MISSISSIPPI LOCUSA TEXAS NEW MILKED A
 CAPITAL:— Montgomery, Jackson, Baton Rouge, Austin, Santa Fe.

3 PACIFIC STATES.

STATE:—California, Oregon, Washington.
 KEY-WORD:— C O W
 CAPITAL:— Sacramento, Salem, Olympia.

13 (20) NORTHERN STATES:—(Maine, New Hampshire, Vermont, New York, Pennsylvania, Oregon, Washington.)

STATE:—Ohio, Michigan, Indiana, Illinois, Wisconsin, Minnesota, Iowa, Nebraska, Dakota,
 KEY-WORD:— OH ! MELIORATE INDIAN WISE WISE MARY MANY ILLS IOWA CITY, NEBRASKA DACOTAH
 CAPITAL:—Columbus, Lansing, Indianapolis, Springfield, Madison, St. Paul, Omaha.
 STATE:—Montana, Wyoming, Idaho, Alaska.
 KEY-WORD:— MAY WELL INDEED ARIOR. SITKA.
 CAPITAL:—

5 EASTERN MIDDLE STATES:—

West Virginia, Kentucky, Tennessee, Missouri, Arkansas.
 KEY-WORD:— WEST VIRGINIA KINDLY TOLD MISSOURI AND
 CAPITAL:— Wheeling, Frankfort, Nashville, Jefferson City, Little Rock.

5 WESTERN MIDDLE STATES:—

Kansas, Indian Territory, Colorado, Utah, Nevada.
 KEY-WORD:— KANSAS IT THAKSFULLY CHOSE UNION NOV.
 CAPITAL:— Topeka, Denver, Salt Lake City, Virginia City.

Area, 856,000 Square Miles.

Mexico.

Population, 8,000,000.

Length, 900 Miles.

STATES.

Breadth, 600 M.

CAPITAL, MEXICO.

10 NORTHERN AND EASTERN STATES.

STATE:—	Sonora,	Cohahuila,	New Leon,	Tamaulipas,	Vera Cruz,
KEY-WORD:—	So	CHANGING	NEW-AJVED	THUS	VERY
CAPITAL:—	Arispa,	Chihuahua,	Monterey,	Aguaya,	Chilapa,
STATE:—	Tobasco,	Yucatan or Merida,	Peten,	Chiapa,	
KEY-WORD:—	TIMES	YET MAY	PROVIDENTIALLY	COME	
CAPITAL:—	Tobasco,	Merida,	Ciudad Real.		

14 SOUTHERN AND WESTERN STATES.

STATE:—	Oaxaca,	La Puebla,	Mexico,	Gherrero,	Michoacan.	Colima,	Jalisco,
KEY-WORD:—	OVER	LE PETITE	MEXICO.	GOOD	MEN	COULD	JOTFULLY
CAPITAL:—	Oaxaca,	La Puebla,	Mexico.	Acapulco,	Valladolid,	Colima,	Guadalarra,
STATE:—	Guanaxeto,	Quaretaró,	San Luis Potosi,	Zacatecas,	Durango,	Sinaloa,	Old California
KEY-WORD:—	GIVE	QUALIFIED	PATIENT	ZEAL,	DUTIFULLY	SUPPORTING	CONCORD
CAPITAL:—	Guanaxeto	Quaretaró,	San Luis Potosi,	Zacatecas,	Durango,	Coliacan,	Loreto.

4 Provinces.

Area, 31,874 sq. m. Provinces:—Connaught, Leinster, Ulster, Munster. Key words:—C.L.U.M. Pop. 5,790,000.

5 COUNTIES OF CONNAUGHT:— Leitrim, Roscommon, Galway, Mayo, Sligo.

KEY-WORD:— LOYAL
COUNTY TOWN:—Carrick on Shannon, Roscommon, Galway, Mayo's Castlebar, Sligo.**12 COUNTIES OF LEINSTER:—**

Louth,	Meath,	Dublin,	Wicklow,	Wexford,	Kilkenny,
Lothy's	DO	WELL	WHO,	KNOWING,	KILKENNY.
Dundalk,	Trine,	Dublin,	Wicklow.	Wexford,	Kilkenny.
Queen's,	King's,	Westmeath,	Longford,	Kildare,	Carlow.
QUEEN'S	KINDNESS,	WITH	LOYAL	KERSA,	CONSORT.
COUNTY TOWN:—	Tullamore,	Mullingar,	Longford,	Abby,	Carlow.

9 COUNTIES OF ULSTER:—Antrim, Down, Armagh, Monaghan, Cavan, Fermanagh, Donegal, Londonderry, Tyrone.

KEY-WORD:— A
COUNTY TOWN:—Belfast, Newry. Armagh, Monaghan, Cavan, Fermanagh, Donegal's Londonderry, Tyrone.**6 COUNTIES OF MUNSTER:—**

Tipperary,	Waterford,	Cork,	Kerry,	Limerick,	Clare.
TIPPERARY'S	WATER	CORK	KERRY'S	LIMERICK	CORR.
COUNTY TOWN:—	Waterford,	Cork.	Tralee,	Limerick,	Ennis.

Area, England and Wales, 58,320 sq. miles.

Kingdom of England.

T

Kingdom of England.

Area, England and Wales, 58,320 sq. miles.

Pop. 21,000,000.

Length, 325 miles.

Counties,

Breadth, 280 miles.

8 COUNTIES ON THE NORTH SEA.

COUNTY:— Northumberland,
KEY-WORD:— No
COUNTY TOWN:— Newcastle,

Durham,
DOUBT
Durham,

York,
YOU
York,

Lincoln,
LEARNS
Boston,

Norfolk,
NOW
Norwich,

Suffolk,
SATISFACTORILY
Ipswich, Chelmsford, Maldstone.

5 COUNTIES ON THE ENGLISH CHANNEL.

COUNTY:— Sussex,
KEY-WORD:— SUS
COUNTY TOWN:— Brighton,

Hampshire,
HAS
Winchester,

Dorset,
DUTIFULLY
Dorchester,

Devon,
DECLARATORY
Exeter,

Cornwall,
CONCORD,
Falmouth,

9 WESTERN BORDER COUNTIES.

COUNTY:— Somerset,
KEY-WORD:— SO
COUNTY TOWN:— Bath,
COUNTY:— Gloucester,
KEY-WORD:— GRACEFULLA
COUNTY TOWN:— Gloucester,
COUNTY:— Lancashire,
KEY-WORD:— CHESTER,
COUNTY TOWN:— CHESTER,
COMMISSIONERS'

Gloucester,
GRACEFULLA
Gloucester,

Monmouth,
MADE
Monmouth,
Westmoreland,
WORTHIER
Appleby,

Hereford,
HER
Hereford,

Shropshire,
STATE
Shrewsbury,
Cumberland,
CARR.
Carlisle.

10 INTERIOR NORTHERN COUNTIES.

COUNTY:— Derby,
KEY-WORD:— DO
COUNTY TOWN:— Derby,
COUNTY:— Warwick,
KEY-WORD:— WITH
COUNTY TOWN:— Warwick,
NOTTINGHAM,
NOR
Nottingham,
Northampton,
NEGLECT
Northampton,

Stafford,
SUPPORT
Stafford,

Leicester,
LONDON'S
Leicester,

Rutland,
RULERS
Oakham,
Cambridge,
COLUMBIA
Cambridge.

Worcester,
WOULD
Worcester,

8 INTERIOR SOUTHERN COUNTIES.

COUNTY:— Oxford,
KEY-WORD:— OR
COUNTY TOWN:— Oxford,
BUCKINGHAM,
BURN
Buckingham,

Hertford,
HER
Hertford.

Bedford,
BEATS
Bedford,

Wiltshire,
WITH
Salisbury,

Berkshire,
BRITANNIA'S
Reading,

Middlesex,
MODEL
London,
Surrey,
SAILORS
Gulford.

6 COUNTIES OF MUNSTER:— Tipperary,
KEY-WORD:— TIPPERRARY'S
COUNTY TOWN:— Tipperary.
WATERFORD, WATER, WATERFORD.
CORK, CORK, CORK.
KERRY, KERRIBLES, TRALE, LIMERICK, LIMERICK, LIMERICK.
LONDONDERRY, LIFORD, CLARE, CLARE, CLARE.
ENRISKILLIN, ENRISKILLIN, ENRISKILLIN.
MOUNTMAGUIRE, MOUNTMAGUIRE, MOUNTMAGUIRE.
CARRIG, CARRIG, CARRIG.
OMAGH, OMAGH, OMAGH.

Principality of Wales.

COUNTIES.

(Included in England, as to Area, Population and Extent.)

6 EASTERN COUNTIES.

COUNTY:— Flint, Denbigh, Montgomery, Radnor, Brecknock, Glamorgan.
 KEY-WORD:— FOOLISH DIVISIONS MIGHT RIXIN BRITAIN'S GREAT
 COUNTY TOWN:— Mold, Denbigh, Montgomery, New Radnor, Brecon, Cardiff.

6 WESTERN COUNTIES.

COUNTY:— Caermarthen, Pembroke, Cardigan, Merioneth, Caernarvon, Anglesey.
 KEY-WORD:— COMFORT PERFECT CONCORD MUST CONSOLIDATE ANGLE-LAND.
 COUNTY TOWN:— Caermarthen, Pembroke, Cardigan, Dolgelly, Caernarvon, Beaumaris.

33

Kingdom of Scotland.

COUNTIES.

Area, 30,685 Square Miles. Population, 3,100,000. Length, 280 Miles. Breadth, 200 Miles.
 CAPITAL, EDINBURGH.

12 COUNTIES NORTH OF THE TAY.

COUNTY:— Shetland & Orkney, Caithness, Sutherland, Ross, Cromartie, Inverness, Nairn.
 KEY-WORD:— SCOTLAND, OLD CALEDONIA'S WICK, DORNOC, DINGWALL, CROMARTIE, INVERNESS, NAIM.
 COUNTY TOWN:— Lerwick, Kirkwall, Wick, Dornoch, Dingwall, Cromartie, Inverness, Nairn.
 COUNTY:— Elgin, Banff, Aberdeen, ABERDEEN, ABERDEEN, STONCHAVEN, FORFAR.
 KEY-WORD:— ELGIN, BRITAIN, ABERDEEN, ABERDEEN, STONCHAVEN, FORFAR.
 COUNTY TOWN:— Elgin, Banff, Aberdeen, Aberdeen, Stonehaven, Forfar.

10 EASTERN AND SOUTHERN COUNTIES.

COUNTY:— Perth, Fife, Stirling, Linlithgow, Edinburgh, Haddington, Berwick, Roxburg, Dumfries, Kirkcubright.
 KEY-WORD:— PERITY FREEDOM STERLING LOKALTY EVER HELD BY ROYAL DUFFIL KINGS
 COUNTY TOWN:— Perth, Cupar, Stirling, Linlithgow, Edinburgh, Haddington, Greenlaw, Jedburg, Dumfries, Kirkcubright.

11 WESTERN AND MIDDLE COUNTIES.

COUNTY:— Wigton, Ayrshire, Renfrew, Dunbarton, Bute, Argyle, Clackmannan.
 KEY-WORD:— WITH AYT, DEEP BINDING AFFECTION CEMENTING
 COUNTY TOWN:— Wigton, Ayr, Renfrew, Dunbarton, Rothesay, Inverary, Clackmannan.
 COUNTY:— Kinross, Lanark, Selkirk.
 KEY-WORD:— KIND LOKAL PEACEFUL SCOTLAND.
 COUNTY TOWN:— Kinross, Lanark, Selkirk, Selkirk.

of
ing
ly
the
the
com
time
upon
out
key-
proc
have
above
repea
until
can g
are th
in min
key-w
syllabi
alike.

ST. CATHARINES Commercial College,

—AND—

Law and Phonographic Institute,

ST. CATHARINES ONTARIO.

This is the only Business College in the Dominion, that is conducted by a Barrister and Attorney-at-Law, who has had over FIFTEEN years PRACTICE at his profession.

This College is established for the purpose of training Young Men and Ladies in those studies necessary to qualify them to discharge effectually their duties in all the departments of business life.

Graham's Edition of Pitman's Phonography is taught to those who desire to qualify themselves to become Professional Reporters.

Telegraphy is also taught to those who intend to become operators. The lectures on Book-Keeping, Spencerian Penmanship, Commercial Law, Phonography, Telegraphy, Philology, Mathematics, &c., are all delivered by the Principal in person, so that students have a guaranty of thorough instruction.

The College is in session, every lawful day from 9 a. m. to 12 m., and 1½ p.m. to 3½ p.m.—Evening Classes (when held) 7 to 9 o'clock

PUPILS MAY ENTER AT ANY TIME.

TERMS:

Full Course of Single and Double Entry Book-Keeping, including Business Penmanship, and Commercial Law, Arithmetic, and Business Practice time unlimited.....	\$40 00
Same Course, for three months.....	25 00
Penmanship only, three months.....	10 00
Telegraphy.....	25 00
Phonography, elementary course of 24 lessons, \$12; 72 lessons for \$30; or for one year.....	50 00

Ladies are admitted to all three courses at half-price.

N. B.—A deduction of Five Dollars will be allowed to students obtaining any two of the above scholarships, and of Ten Dollars where all three courses are taken. All fees are payable strictly in advance. Board and Lodging in the Town, \$3.00 and upwards, per week.

For further information call at the College, or address

C. P. SIMPSON, PRINCIPAL,
St. Catharines, Ontario, Canada.

