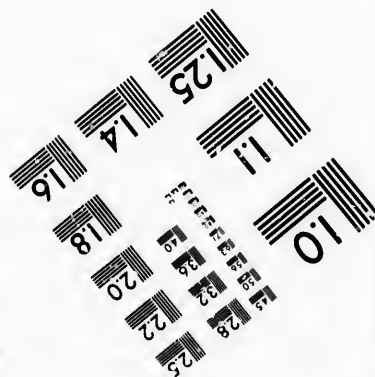
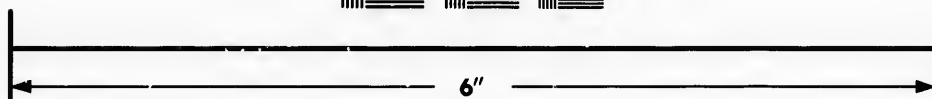
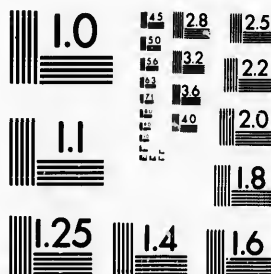


**IMAGE EVALUATION
TEST TARGET (MT-3)**



**Photographic
Sciences
Corporation**

23 WEST MAIN STREET
WEBSTER, N.Y. 14560
(716) 872-4503

Can

**CIHM/ICMH
Microfiche
Series.**

**CIHM/ICMH
Collection de
microfiches.**



Canadian Institute for Historical Microreproductions / Institut canadien de microreproductions historiques

© 1987

Technical and Bibliographic Notes/Notes techniques et bibliographiques

The Institute has attempted to obtain the best original copy available for filming. Features of this copy which may be bibliographically unique, which may alter any of the images in the reproduction, or which may significantly change the usual method of filming, are checked below.

L'Institut a microfilmé le meilleur exemplaire qu'il lui a été possible de se procurer. Les détails de cet exemplaire qui sont peut-être uniques du point de vue bibliographique, qui peuvent modifier une image reproduite, ou qui peuvent exiger une modification dans la méthode normale de filmage sont indiqués ci-dessous.

- Coloured covers/
Couverture de couleur
- Covers damaged/
Couverture endommagée
- Covers restored and/or laminated/
Couverture restaurée et/ou pelliculée
- Cover title missing/
Le titre de couverture manque
- Coloured maps/
Cartes géographiques en couleur
- Coloured ink (i.e. other than blue or black)/
Encre de couleur (i.e. autre que bleue ou noire)
- Coloured plates and/or illustrations/
Planches et/ou illustrations en couleur
- Bound with other material/
Relié avec d'autres documents
- Tight binding may cause shadows or distortion along interior margin/
La reliure serrée peut causer de l'ombre ou de la distorsion le long de la marge intérieure
- Blank leaves added during restoration may appear within the text. Whenever possible, these have been omitted from filming/
Il se peut que certaines pages blanches ajoutées lors d'une restauration apparaissent dans le texte, mais, lorsque cela était possible, ces pages n'ont pas été filmées.
- Additional comments:/
Commentaires supplémentaires:
[Printed ephemera] 1 sheet, 2 p.

- Coloured pages/
Pages de couleur
- Pages damaged/
Pages endommagées
- Pages restored and/or laminated/
Pages restaurées et/ou pelliculées
- Pages discoloured, stained or foxed/
Pages décolorées, tachetées ou piquées
- Pages detached/
Pages détachées
- Showthrough/
Transparence
- Quality of print varies/
Qualité inégale de l'impression
- Includes supplementary material/
Comprend du matériel supplémentaire
- Only edition available/
Seule édition disponible
- Pages wholly or partially obscured by errata slips, tissues, etc., have been refilmed to ensure the best possible image/
Les pages totalement ou partiellement obscurcies par un feuillet d'errata, une pelure, etc., ont été filmées à nouveau de façon à obtenir la meilleure image possible.

This item is filmed at the reduction ratio checked below/
Ce document est filmé au taux de réduction indiqué ci-dessous.

10X	12X	14X	16X	18X	20X	22X	24X	26X	28X	30X	32X
<input type="checkbox"/>	<input type="checkbox"/>	<input type="checkbox"/>	<input type="checkbox"/>	<input type="checkbox"/>	<input type="checkbox"/>	<input type="checkbox"/>	<input type="checkbox"/>	<input type="checkbox"/>	<input type="checkbox"/>	<input type="checkbox"/>	<input checked="" type="checkbox"/>

The copy filmed here has been reproduced thanks to the generosity of:

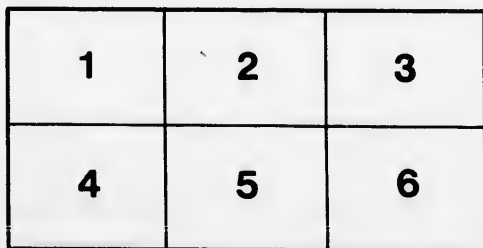
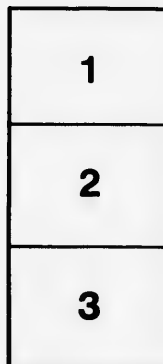
Metropolitan Toronto Library
Canadian History Department

The images appearing here are the best quality possible considering the condition and legibility of the original copy and in keeping with the filming contract specifications.

Original copies in printed paper covers are filmed beginning with the front cover and ending on the last page with a printed or illustrated impression, or the back cover when appropriate. All other original copies are filmed beginning on the first page with a printed or illustrated impression, and ending on the last page with a printed or illustrated impression.

The last recorded frame on each microfiche shall contain the symbol \rightarrow (meaning "CONTINUED"), or the symbol ∇ (meaning "END"), whichever applies.

Maps, plates, charts, etc., may be filmed at different reduction ratios. Those too large to be entirely included in one exposure are filmed beginning in the upper left hand corner, left to right and top to bottom, as many frames as required. The following diagrams illustrate the method:



L'exemplaire filmé fut reproduit grâce à la générosité de:

Metropolitan Toronto Library
Canadian History Department

Les images suivantes ont été reproduites avec le plus grand soin, compte tenu de la condition et de la netteté de l'exemplaire filmé, et en conformité avec les conditions du contrat de filmage.

Les exemplaires originaux dont la couverture en papier est imprimée sont filmés en commençant par le premier plat et en terminant soit par la dernière page qui comporte une empreinte d'impression ou d'illustration, soit par le second plat, selon le cas. Tous les autres exemplaires originaux sont filmés en commençant par la première page qui comporte une empreinte d'impression ou d'illustration et en terminant par la dernière page qui comporte une telle empreinte.

Un des symboles suivants apparaîtra sur la dernière image de chaque microfiche, selon le cas: le symbole \rightarrow signifie "A SUIVRE", le symbole ∇ signifie "FIN".

Les cartes, planches, tableaux, etc., pouvant être filmés à des taux de réduction différents. Lorsque le document est trop grand pour être reproduit en un seul cliché, il est filmé à partir de l'angle supérieur gauche, de gauche à droite, et de haut en bas, en prenant le nombre d'images nécessaire. Les diagrammes suivants illustrent la méthode.

Yorkville Loop Line Railway Co.

OF

ONTARIO, CANADA.

PROSPECTUS.

As an illustration, the following figures will demonstrate the saving in the cost of conveying Through Traffic by the Yorkville Loop Line Railway, as compared with the by way of the Grand Trunk Railway.

This Railway was chartered by the Legislature of Ontario in 1873, sec. 36 Vic. Cap. 77, of the Statutes of the Province, and an Act passed in the year 1876 extended the time for the commencement and completion of the Railway. See 30 Vic. Cap. 85.

The Line is intended to run from a point on the Grand Trunk Railway of Canada at or near the Carlton Station, to a point, also on the Grand Trunk Railway, in the Township of Scarborough, passing through the Village of Yorkville.

The object of this Railway is:— First. To alleviate as much as possible the crush of Traffic now passing daily over the Esplanade in front of the City of Toronto, by providing an alternative and superior route for Through Freight, and allow the business proper of Toronto City to be carried on with greater facility.

The only means of access to the Steam Boats and other craft for either Passengers or Shippers, is across the Esplanade, which is now the only outlet for all the Railway Traffic. The numerous fatal accidents which occur by persons being run over by the Trains, imperatively demand an amelioration in the conduct of this Traffic.

There are now more than 200 Trains daily passing to and fro over the Line of the Esplanade, and a further jam must evidently take place when the Credit Valley Railway is opened, which it will no doubt shortly be.

The Esplanade accommodation, which is now wholly inadequate, cannot be enlarged except at enormous cost, for the reason that it is bounded on the South side by the deep waters of the Bay, lined with Wharves and Storehouses; and on the North by large and valuable Warehouses and Factories.

The promoters of the Y. L. L. Railway have devised this mode of overcoming the difficulty, and are confident that it will effectually relieve the most crowded part of the City, and accord to Shippers and Passengers by the numerous Boats in the season of Navigation, facilities for crossing and recrossing the numberless Tracks with safety and expedition, the advantage of which everyone now going down to the water will appreciate.

Second:—This Railway will accommodate the Citizens dwelling in the Northern portion of Toronto, and also the Villagers of Yorkville to a great degree, inasmuch as they will be enabled to avail themselves of any train leaving Toronto for the East, West or North, it being contemplated to build a Passenger Station at Yorkville, and inaugurate a system of Short Train Service for the convenience of Residents, to meet all trains from or to the City.

For the conveyance of Lumber, Lime, Bricks, Tiles, Wood, Coal, etc., etc., to or from the extensive Brick Fields of Yorkville, and to Buildings in frequent course of construction at Yorkville and North Toronto, which now have to be carted to or from the Esplanade at a cost exceeding 50cts. to \$1.00 per ton,—the advantages are obvious.

The Yorkville Loop Line Railway will ultimately connect with every Line now entering Toronto.

Third:—For all Through Freight, that is from Detroit and Sarnia to Montreal and *vice versa*, the gain to the Companies carrying such Traffic, by using this Line will be enormous. The Grand Trunk Railway Company's trains for instance leaving Carlton Station for Toronto descend in the journey nearly 160 feet, pass along the crowded Esplanade, (frequently losing hours in doing so, besides blocking up the way,) then ascend a grade of 180 feet, and more-over go nearly 3 miles out their way in accomplishing this.

As an illustration, the following figures will demonstrate the saving in the cost of conveying Through Traffic by the Yorkville Loop Line Railway, as compared with that by way of the Grand Trunk Railway:—

Distance by Grand Trunk Railway	11½ miles.
Add 180 feet rise, equal, in railway working, to	¾ "
Distance by Yorkville Loop Line Railway	9 "
Total saving	6 miles.

Frequently 40 freight trains per day, of 18 cars each, work over the Grand Trunk Railway. Say 15 of these pass over the Yorkville Loop Line Railway, we have;—

Fifteen trains of 18 cars each = 270 cars per day.

Taking 311 working days per annum, a total of 83,970 cars per annum.

Six miles on each car shows the saving in mileage, to be on only 15 freight trains. 503,820 miles per annum.

Say each car contains ten tons, we have 5,038,200 tons of produce,

Which at one cent per ton, equals \$50,382 per annum saved,

equal to 10 per cent. on the whole capital of the Yorkville Loop Line Railway.

The Grand Trunk Railway Company will, moreover, be enabled to carry 20 cars to Montreal at the same cost for haulage as for 18 cars at present, being a saving of 11 per cent. on the whole of their Through Freight Trains—engines, drivers, firemen, conductors, brakemen, coal, wood, &c., &c. and they would further gain an immense amount of time, by not having to pass over the Esplanade;—this cannot be estimated at less than \$100,000 per annum.

The Credit Valley Railway and the Toronto and Ottawa Railway, when built, will also be benefited by this short line, it being practically almost a level grade from point to point along its whole length, not quite nine miles. It will unquestionably give to North Toronto and Yorkville Passengers and Shippers by Rail, facilities in every respect equal, if not superior, to those enjoyed by citizens in the south; in fact, it will put a double face on Toronto.

