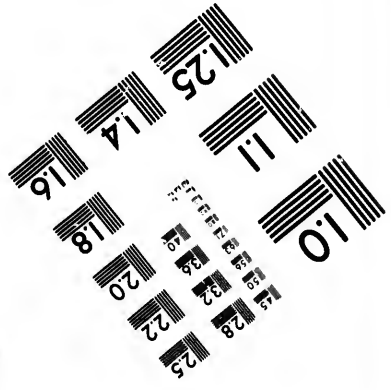
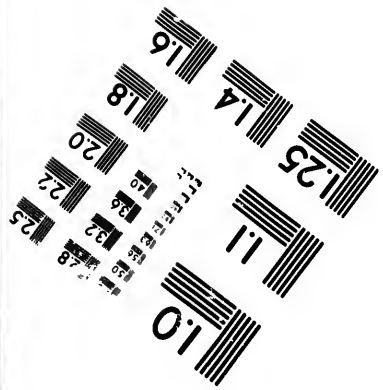
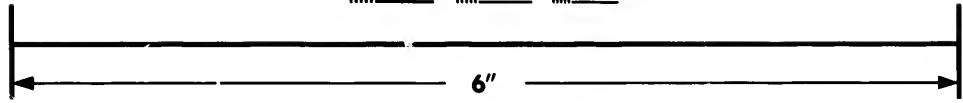
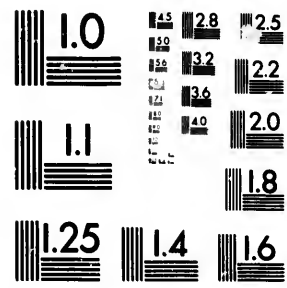


**IMAGE EVALUATION
TEST TARGET (MT-3)**



**Photographic
Sciences
Corporation**

23 WEST MAIN STREET
WEBSTER, N.Y. 14580
(716) 872-4503



**CIHM/ICMH
Microfiche
Series.**

**CIHM/ICMH
Collection de
microfiches.**



Canadian Institute for Historical Microreproductions / Institut canadien de microreproductions historiques



© 1984

Technical and Bibliographic Notes/Notes techniques et bibliographiques

The Institute has attempted to obtain the best original copy available for filming. Features of this copy which may be bibliographically unique, which may alter any of the images in the reproduction, or which may significantly change the usual method of filming, are checked below.

L'Institut a microfilmé le meilleur exemplaire qu'il lui a été possible de se procurer. Les détails de cet exemplaire qui sont peut-être uniques du point de vue bibliographique, qui peuvent modifier une image reproduite, ou qui peuvent exiger une modification dans la méthode normale de filmage sont indiqués ci-dessous.

- Coloured covers/
Couverture de couleur
- Covers damaged/
Couverture endommagée
- Covers restored and/or laminated/
Couverture restaurée et/ou pelliculée
- Cover title missing/
Le titre de couverture manque
- Coloured maps/
Cartes géographiques en couleur
- Coloured ink (i.e. other than blue or black)/
Encre de couleur (i.e. autre que bleue ou noire)
- Coloured plates and/or illustrations/
Planches et/ou illustrations en couleur
- Bound with other material/
Relié avec d'autres documents
- Tight binding may cause shadows or distortion along interior margin/
La reliure serrée peut causer de l'ombre ou de la distorsion le long de la marge intérieure
- Blank leaves added during restoration may appear within the text. Whenever possible, these have been omitted from filming/
Il se peut que certaines pages blanches ajoutées lors d'une restauration apparaissent dans le texte, mais, lorsque cela était possible, ces pages n'ont pas été filmées.
- Additional comments:/
Commentaires supplémentaires:

- Coloured pages/
Pages de couleur
- Pages damaged/
Pages endommagées
- Pages restored and/or laminated/
Pages restaurées et/ou pelliculées
- Pages discoloured, stained or foxed/
Pages décolorées, tachetées ou piquées
- Pages detached/
Pages détachées
- Showthrough/
Transparence
- Quality of print varies/
Qualité inégale de l'impression
- Includes supplementary material/
Comprend du matériel supplémentaire
- Only edition available/
Seule édition disponible
- Pages wholly or partially obscured by errata slips, tissues, etc., have been refilmed to ensure the best possible image/
Les pages totalement ou partiellement obscurcies par un feuillet d'errata, une pelure, etc., ont été filmées à nouveau de façon à obtenir la meilleure image possible.

This item is filmed at the reduction ratio checked below/
Ce document est filmé au taux de réduction indiqué ci-dessous.

10X	12X	14X	16X	18X	20X	22X	24X	26X	28X	30X	32X
<input type="checkbox"/>	<input type="checkbox"/>	<input type="checkbox"/>	<input type="checkbox"/>	<input type="checkbox"/>	<input type="checkbox"/>	<input type="checkbox"/>	<input checked="" type="checkbox"/>	<input type="checkbox"/>	<input type="checkbox"/>	<input type="checkbox"/>	<input type="checkbox"/>

The copy filmed here has been reproduced thanks to the generosity of:

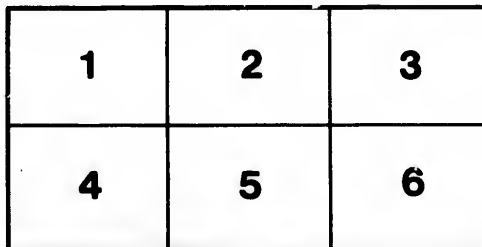
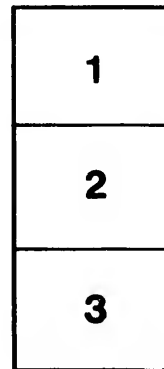
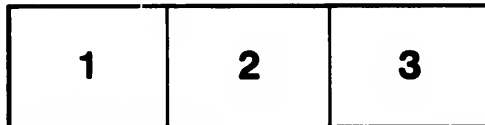
Metropolitan Toronto Library
Canadian History Department

The images appearing here are the best quality possible considering the condition and legibility of the original copy and in keeping with the filming contract specifications.

Original copies in printed paper covers are filmed beginning with the front cover and ending on the last page with a printed or illustrated impression, or the back cover when appropriate. All other original copies are filmed beginning on the first page with a printed or illustrated impression, and ending on the last page with a printed or illustrated impression.

The last recorded frame on each microfiche shall contain the symbol → (meaning "CONTINUED"), or the symbol ▼ (meaning "END"), whichever applies.

Maps, plates, charts, etc., may be filmed at different reduction ratios. Those too large to be entirely included in one exposure are filmed beginning in the upper left hand corner, left to right and top to bottom, as many frames as required. The following diagrams illustrate the method:



L'exemplaire filmé fut reproduit grâce à la générosité de:

Metropolitan Toronto Library
Canadian History Department

Les images suivantes ont été reproduites avec le plus grand soin, compte tenu de la condition et de la netteté de l'exemplaire filmé, et en conformité avec les conditions du contrat de filmage.

Les exemplaires originaux dont la couverture en papier est imprimée sont filmés en commençant par le premier plat et en terminant soit par la dernière page qui comporte une empreinte d'impression ou d'illustration, soit par le second plat, selon le cas. Tous les autres exemplaires originaux sont filmés en commençant par la première page qui comporte une empreinte d'impression ou d'illustration et en terminant par la dernière page qui comporte une telle empreinte.

Un des symboles suivants apparaîtra sur la dernière image de chaque microfiche, selon le cas: le symbole → signifie "A SUIVRE", le symbole ▼ signifie "FIN".

Les cartes, planches, tableaux, etc., peuvent être filmés à des taux de réduction différents. Lorsque le document est trop grand pour être reproduit en un seul cliché, il est filmé à partir de l'angle supérieur gauche, de gauche à droite, et de haut en bas, en prenant le nombre d'images nécessaire. Les diagrammes suivants illustrent la méthode.

WINDMILL SEEDS FOR THE FIELD AND GARDEN

COBOURG SEED STORE.

A DESCRIPTIVE CATALOGUE

OF

Agricultural, Garden, and Flower Seeds

For Sale by

JOHN D. ROBERTS,

KING STREET WEST, COBOURG, C. W.

GENERAL REMARKS.

THE Subscriber, being fully aware of the vexation, loss and disappointment which result to the purchasers of bad Seeds, is determined to use his utmost vigilance to prevent a single package of doubtful Seeds leaving his store. Those varieties that are raised in greater perfection in Europe are imported from a first-class Establishment in London, and those that grow to perfection in this country are procured from the most reliable sources.

Many Seeds, such as Beet, Carrot, Onion, Parsley, Mangel Wurzel, &c., &c., grow more freely if soaked in water for 24 hours, and allowed partially to dry, particularly if the ground is in a dry state. The omission of this, together with unskillful or careless management, or unfavorable weather, frequently prevents the vegetation of Seeds of the first quality, and gives occasion for unjust charges against the Seedsman.

HERB Seeds, and all fine Seeds, require to be carefully sown on a bed of fine rich earth. Sift a little fine soil over the seed, and shade from the sun until the plants come up.

Dwarf Apple and Pear Trees, Grape Vines, Red, White, and Black Currant Bushes, (best kinds,) Gooseberry Bushes, (fine sorts,) Strawberry Plants, (the best varieties,) Rhubarb Roots, Ornamental Trees, Shrubs, Roses, Fuchsias, Dahlias, and Bedding Plants of every description.

In their season, I can furnish choice Flower Plants, (seedlings,) Cabbage, Cauliflower, Celery, Broccoli, Tomato, and Pepper Plants.

Flower Pots, all sizes. Prices, on application.

Agent for *Moore's Rural New Yorker*, at \$1.50 per annum, *Genesee Farmer* and *Rural Annual*, the two for 50 cents.

VEGETABLE SEEDS FOR THE FIELD AND GARDEN.

	Per Oz.	Pkg.		Per Oz.	Pkg.
Asparagus —New Giant.....	8	Pkg.	Musk Melon —Green Citron.....	5	Pkg.
English Broad Beans —Early Marzagan.....	25	Per Qt.	Yellow Cantelopes.....	5	Pkg.
Mackie's Monarch Long-pod.....	25		Watermelon —Long Island.....	5	Pkg.
Toker.....	25		Mustard —White London.....	5	Pkg.
Broad Windsor.....	25		Broad Leaved.....	5	Pkg.
Kidney or French Beans —Dun Dwarf.....	25		Onion —Large Red.....	10	Pkg.
Speckled Dwarf.....	25		Large Yellow.....	15	Pkg.
Fulmers.....	25		Italian Tripoli, very fine.....	15	Pkg.
White.....	12½		White Lisbon.....	10	Pkg.
Case Knife, (runners).....	30		Parship —Hollow-crowned.....	7	Pkg.
Scarlet Runners.....	30		Parley —Enfield Matchless, extra curled.....	10	Pkg.
Beet —Long Blood.....	7	Per oz.	Mayatt's Garnishing.....	10	Pkg.
Early Turnip-rooted.....	7		Moss Curled, new.....	12½	Pkg.
Early Turnip-rooted.....	7		Peppers, or, Capsicums —Long.....	5	Pkg.
Boracelo, or, Greens —New Garnishing, fine.....	12½	Pkg.	Square.....	5	Pkg.
Brussels Sprouts —Imported, (extra fine).....	17	Pkg.	Pumpkin —Large Yellow Field, 50 cts. ½ lb.....	5	Pkg.
Broccoli —Snow's fine early white.....	60	12½	Peas, (choice English sorts) —Dandel O'Rourke, very early.....	5	Pkg.
Hammond's new White Cape.....	40	10	2½ feet.....	25	Per Qt.
Cabbage —Early York.....	12½	Pkg.	Early Prize-taker, excellent, 3 feet.....	25	Pkg.
Large York.....	12½		Eugenie, the earliest, white wrinkled marrow.....	25	Pkg.
Penton.....	12½		Pea, dwarf.....	30	10
Early Battersea.....	12½		Bishop's Long Podded, 2½ feet.....	25	Pkg.
Stone's early Spotboro'.....	12½		Dwarf Sugar, edible pods, 2 feet.....	30	10
Flat Dutch.....	10	Pkg.	Fairboard's Champion of England, 5 feet.....	25	Pkg.
Blood Red.....	15	Pkg.	Radish —Scarlet Short Top.....	5	Pkg.
Drumhead, large.....	10	Pkg.	London Particular, long scarlet frame.....	5	Pkg.
Green Curled Savoy, extra fine.....	12½		White Turnip.....	5	Pkg.
Large Cabbage Savoy, extra fine.....	10	Pkg.	Red Turnip.....	5	Pkg.
Yellow Savoy.....	10	Pkg.	Olive-shaped, scarlet, extra fine, early.....	7	Per oz.
Kohi Rabbi, (purple).....	10	Pkg.	Rose, or, Winter.....	10	Pkg.
Kohi Rabbi, (green).....	10	Pkg.	Rhubarb —Victoria, large.....	5	Pkg.
Carrot —Early Horn.....	10	Pkg.	Salady, or, Vegetable Oyster	12½	Pkg.
New Intermediate, very earl.....	10	Pkg.	Spinach —Round, or, Summer, 50 cts. ½ lb.....	5	Pkg.
Large White Belgian, 50 cts. ½ lb.....	7	Pkg.	Prickly, 50 cts. ½ lb.....	5	Pkg.
Yellow Belgian, 70 cts. ½ lb.....	7	Pkg.	New Zealand.....	10	Pkg.
Cauliflower —Early Paris.....	60	10	Squash —Vegetable Marrow.....	5	Pkg.
Waite's Alma.....	60	12½	Hubbard (winter).....	5	Pkg.
Clery —Shepherd's Giant Red.....	15	Pkg.	Tomato —Large Red.....	5	Pkg.
Cole's Crystal White.....	15	Pkg.	Turnips, (for the garden) —New Orange-jelly, 50 cts. ½ lb.....	5	Pkg.
White Solid.....	15	Pkg.	Early Stone.....	5	Pkg.
Citron —For preserves.....	5	Pkg.	Early Six-weeks.....	5	Pkg.
Corn —Fine Curled.....	25	Pkg.	Red American Stone.....	5	Pkg.
Stowell's Evergreen, sweet.....	25	Pkg.	Turnips, (for the field) —White Globe, 40 cts. ½ lb.....	5	Pkg.
Cucumber —Long Green.....	30	Pkg.	Silena, or, Stubble, 40 cts. ½ lb.....	5	Pkg.
Kenyon's Favorite.....	10	Pkg.	Marshall's, ex. fine, purple top, Swede, 40 cts. ½ lb.....	5	Pkg.
Nursery.....	10	Pkg.	London Swede, extra fine, 45 cts. ½ lb.....	5	Pkg.
Gherkin, true.....	5	Pkg.	Shamrock Swede, the finest purple-top Swede in cultivation, 45 cts. ½ lb.....	5	Pkg.
Egg Plant —Purple.....	5	Pkg.	Waite's Eclipse, purple-top, yellow hybrid, 50 cts. ½ lb.....	5	Pkg.
Garlic —Extra fine, 25 cts. ½ dozen.....	15	Pkg.	Herbs, (all at 5 cts. ½ package) —Balm, Horehorud, Lavender, Marjoram Sweet, Rue, Sage, Sweet Basil, Summer Savory, Sorrel, Thyme.....	15	Pkg.
Leek —Large Musselburgh, or, Scotch.....	15	Pkg.	Miscellaneous —Potatoes, Potato Onions, (English and American), Clover and Timothy Seed, &c., &c., at Market prices.....	15	Pkg.
Lettuce —Drumhead, or Malta.....	15	Pkg.			
Royal, or, Grand Admiral.....	15	Pkg.			
White Silician.....	20	Pkg.			
Waite's Large White Cos.....	20	Pkg.			
Mangel Wursel —Long Red.....	45	Per lb.			
Yellow Globe.....	45	Pkg.			
New Olive-shaped, red, large and fine.....	50	Pkg.			

DESCRIPTIVE CATALOGUE OF FLOWER SEEDS.

Collections of Imported German Seeds.

EACH VARIETY SEPARATE IN THE PACKAGE.

	Pkg.		Pkg.
ASTERIA, (German) —New Double, pyramidal, 12 varieties.....	45	cts.	GOURDS —Ornamental.....
Quilled and Striped.....	12	cts.	5
New Globe.....	12	cts.	5
(French)—New Penny, pyramidal.....	12	cts.	5
Traffault Perfection, quite new.....	12	cts.	5
Kamuncula's Flowering Miniature.....	12	cts.	5
New Bouquet, pyramidal, extra.....	12	cts.	5
The above mixed, per package.....	10	cts.	5
BALSAM —Camellia-flora.....	12	cts.	5
COCKSCOMB —Distinct colors.....	12	cts.	5
HOLLYHOCK —Double, from newest in cult'n.....	12	cts.	5
LARKSPUR —Dwarf, brightest colors.....	12	cts.	5
STOCKS —Brightest and most beautiful colors.....	12	cts.	5
New large Flowering Dwarf.....	12	cts.	5
Large-flower'd, pyramidal, new & beautiful.....	12	cts.	5
Emperor, perpetual.....	6	cts.	5
The above mixed, per package.....	10	cts.	5
Drompton Winter, fine double.....	12	cts.	5
WALLFLOWER —Double.....	6	cts.	5
			NOVELTIES.
			Nasturtium, Crystal Palace Gem, true, new and beautiful,
			invaluable for bedding, very dwarf.....
			Zinnia Flora Pleno, extra fine, double.....
			Dianthus, Chiuensis Heddwight & Lascinatus, splendid, mixed.....
			Antirrhinum, or, Snap-dragon, brilliant.....
			EVERLASTING FLOWERS.
			Acroclium Roseum, bright rose color, per package.....
			Globe Amaranthus, 3 each color.....
			purple.....
			white.....
			Helichrysum Bracteanum.....
			Zeranthemum, white.....
			purple.....
			mixed.....
			Briza Maximil, or, Shekling Grass.....

DESCRIPTIVE CATALOGUE OF FLOWER SEEDS, FOR 1862.

ABBREVIATIONS.—Color.—Bl. blue; cr. crimson; gr. green; or. orange; r. red; sc. scarlet; str. striped; v. violet; var. variegated; yel. yellow; div. several; l. light; dk. dark; ro. rose; wh. white; p. purple; pt. pink; l. lilac.

Flower the First Season.			Color.	Ft. high.	cts.	Flower the Second Season.		
ADONIS FLO.	Red.	1		5	MEMPHILA —Insignis.....	Bl.	1	5
ANTIRRHINUM BRILLIANT , or Snap-Drum	Div.	1 to 2		5	Marginate.....	B. & W.	1	5
Splendid Mixed, from new varieties.....	Div.	1 to 2		5	NIGELLA —Double Dwarf.....	Wh.	1	5
ASTER —New globe-flowering, mixed.....	Div.	1 1/2 to 2		5	NOLANA —Atriplicifolia.....	W. & L.	1 to 1 1/2	5
Dwarf Bouquet, pyramidal, extra.....	Div.	1		5	OATS —Animated.....	Var.	1	5
Double Turkey, fine.....	Div.	1 to 1 1/2		5	PEAS, Sweet —Mixed, 7 oz. 10 cts.....	Div.	3 to 4	5
New Penny-flowered, Tra-Caut's.....	Div.	1 1/2 to 2		5	PEYONIA —Choice hybrid, mixed.....	Div.	1 to 2	5
BALSAM —Good, mixed.....	Div.	1 1/2 to 2		5	Green-bordered and veined.....	Y. & R.	1 to 1 1/2	5
Double, or, Rose, mixed.....	Div.	1 1/2 to 3		10	PELOE DRUMMONDI —Mixed.....	Div.	1 to 1 1/2	5
BARTONIA AUREA	Yel.	1		5	Alba, true.....	Wh.	1 to 1 1/2	10
CACALIA COCCINEA —Scarlet Tassel Flower.....	Se.	1 to 1 1/2		5	Queen Victoria.....	P. & W.	1 to 1 1/2	10
CANDYTUFT —Fragrant.....	Div.	1 to 1 1/2		5	PINK —Chinese, fine, double.....	Div.	1	5
Scarlet.....	Sc.	1/2 to 1		5	POPPY —German, mixed.....	Div.	1 1/2 to 2	5
White Rocket.....	Wh.	1		5	PORTULACA —Fine, mixed.....	Div.	1/2	5
CLARKIA PULCHERRIMA —Heat of the Clark's.....	Ro.	1 to 1 1/2		5	PRINCE'S FEATHER —New, large-flowering.....	Cr.	1/2	5
CLINTONIA FULCHELLA —Grandiflora dwarf.....	Div.	1/2 to 1		5	SALPIGLOSSIS —Fine, mixed.....	Div.	1 to 2	5
COCKSCOMB —Dwarf crimson.....	Cr.	1		10	SANVITALIA PROCUMBENS	Y. & P.	1/2 to 1	5
German, mixed.....	Div.	1 to 2		5	SAPONARIA CALABRICA MULTIFLORA	1/2 to 1	5	
COLLINSIA —Bl-color.....	Var.	1 1/2 to 1		5	SCHIZANTHUS GRANDIFLORUS OCULATUS	P. & W.	1 to 1 1/2	10
Grandiflora.....	Red.	1 1/2 to 1		5	SENSITI PLANT	Div.	1	5
Multi-color.....	Var.	1/2 to 1		5	STOCK —Ten-week, German, mixed.....	Wh.	1 to 1 1/2	5
COLONIA —Coccinea.....	Cr.	1		5	THUNBERGIA —Alba, (climber).....	Or. & P.	2 to 6	10
CONVOLVULUS —Minor.....	B. & W.	1		5	Arantaca.....	Or. & P.	2 to 6	10
New Dark.....	Dk.	1		5	VISCARIA OCULATA	R. & P.	1	5
New Striped.....	Str.	1		5	ZINNIA —Mixed.....	Div.	2	5
Major, Morning Glory, mixed.....	Div.	8 to 8		5				
CALLIOPSIS , or COEQUIE —New Marbled.....	Y. & Dk.	1 1/2 to 2		5				
Drummondii.....	Y. & Dk.	1 1/2 to 2		5				
Elegans Picta.....	Var.	2		5				
Nigra Speciosa.....	Dk.	3		5				
COSEMEDIDM BURRIGIANUM —Splendid for bedding.....		1		5				
DATURA —Double White.....	Wh.	2		5				
FORGET-ME-NOT	Bl.	1/2 to 1		5				
GODETIA —Alba.....	Wh.	1		5				
GYPSOPHILLA —Muralis.....	Pi.	1/2 to 1		5				
HEARTSEASE , or FARBY —Fine Mixed.....	Div.	1 to 1 1/2		10				
HIBISCUS —Africanus Major.....	Pl.	1 to 1 1/2		5				
ICE PLANT	Div.	1/2		5				
LARKS PUR —Double Dwarf Rocket, mixed.....	W. & L.	1 1/2 to 2		5				
LEPTOSIPHON ANDROSACEUS	Cr.	1		10				
LINUM GRANDIFLORUM	Div.	1		5				
LUPINUS —Mixed.....	Str.	1		5				
MARIGOLD —French Dwarf.....	Div.	1 1/2 to 3		5				
MARVEL OF PERU —Mixed.....	Gr.	1		5				
MIGNONETTE —7 oz. 12 cts.....	Sc.	1 1/2 to 2		5				
MIMULUS —Queen Victoria.....	Div.	8 to 6		5				
NASTURTIUMS —Mixed, 7 oz. 10 cts.....	Sc.	1		5				
New Dwarf, scarlet.....	Cr.	1		5				
" " dark crimson.....	Cr.	1		5				
Tom Thumb, scarlet.....	Sc.	1		5				

SUMMER FLOWERING BULBS.

GLADIOLUS —Gandavensis.....	each 10 gts.	GLADIOLUS —Prince Albert.....	each 10 cts.
Floribundus.....	10	Communia Alba.....	10
Eticiana.....	10	Formosissimus.....	10
Colvillii.....	10	RANUNCULUS —Fine, mixed from named flowers.....	3
ANEMONE —Fine, double, 4 cts.			

CANADIAN STANDARD WEIGHT IN A BUSHEL OF GRAIN, SEEDS, VEGETABLES, &c

GRAIN.			SEEDS.			VEGETABLES.		
Wheat	..	60 lbs	Clover	..	60 lbs	Potatoes, Parsnips	..	40 lbs
Peas	..	60	Flax	..	50	Carrots, Turnips	..	60
Beans	..	60	Timothy	..	48	Beets and Onions	..	60
Indian Corn	..	56	Hemp	..	44	Salt	..	54
Rye	..	56	Blue Grass	..	14	Castor Beans	..	40
Barley	..	44	Red-top Grass	..	9	Malt	..	54
Buckwheat	..	48	Hungarian Grass	..	48	Dried Peaches	..	33
Oats	..	54	Millet	..	48	Dried Apples	..	22

Quantity of Seed required for an Acre.

Wheat	1 1/2 to 2 bushels
Rye	1 1/2 "
Oats	3 "
Barley	2 "
Peas	2 to 3 "
White Beans	1 1/2 "
Buckwheat	1 1/2 "
Corn, in hills	4 to 8 quart
Potatoes	10 to 16 bushels
Beets	3 pounds
Carrots	2 "
Turnips	1 to 1 1/2 "
Clover, white	4 quart
Clover, red	8 "
Timothy	6 "
Mixed Lawn Grass	1 to 2 bushels

The following Table shows the number of Plants to the acre, at any of the distances mentioned

DISTANCE.	NO. OF PLANTS
1 Foot	43,560
1 1/4	19,360
2	10,890
2 1/4	6,539
3	4,840
4	2,722
5	1,742
6	1,210
9	537
12	362
15	192
18	134
20	110
25	70

