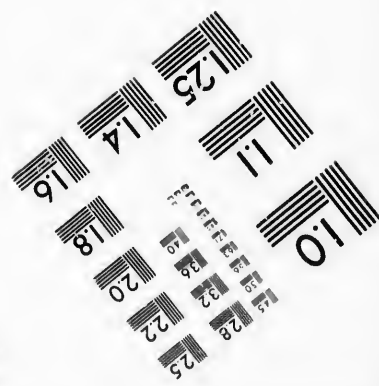
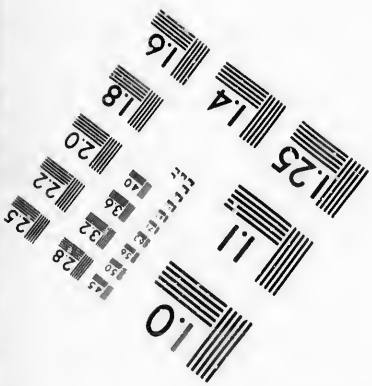
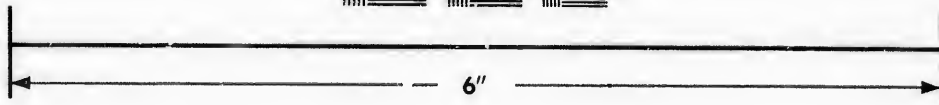
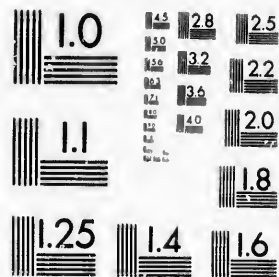


**IMAGE EVALUATION
TEST TARGET (MT-3)**



**Photographic
Sciences
Corporation**

23 WEST MAIN STREET
WEBSTER, N.Y. 14580
(716) 872-4503

**CIHM/ICMH
Microfiche
Series.**

**CIHM/ICMH
Collection de
microfiches.**



Canadian Institute for Historical Microreproductions / Institut canadien de microreproductions historiques

© 1987

Technical and Bibliographic Notes/Notes techniques et bibliographiques

The Institute has attempted to obtain the best original copy available for filming. Features of this copy which may be bibliographically unique, which may alter any of the images in the reproduction, or which may significantly change the usual method of filming, are checked below.

L'Institut a microfilmé le meilleur exemplaire qu'il lui a été possible de se procurer. Les détails de cet exemplaire qui sont peut-être uniques du point de vue bibliographique, qui peuvent modifier une image reproduite, ou qui peuvent exiger une modification dans la méthode normale de filmage sont indiqués ci-dessous.

- Coloured covers/
Couverture de couleur
- Covers damaged/
Couverts a endommagée
- Covers restored and/or laminated/
Couverts restaurée et/ou pelliculée
- Cover title missing/
Le titre de couverture manque
- Coloured maps/
Cartes géographiques en couleur
- Coloured ink (i.e. other than blue or black)/
Encre de couleur (i.e. autre que bleue ou noire)
- Coloured plates and/or illustrations/
Planches et/ou illustrations en couleur
- Bound with other material/
Relié avec d'autres documents
- Tight binding may cause shadows or distortion along interior margin/
La reliure serrée peut causer de l'ombre ou de la distorsion le long de la marge intérieure
- Blank leaves added during restoration may appear within the text. Whenever possible, these have been omitted from filming/
Il se peut que certaines pages blanches ajoutées lors d'une restauration apparaissent dans le texte, mais, lorsque cela était possible, ces pages n'ont pas été filmées.

- Coloured pages/
Pages de couleur
- Pages damaged/
Pages endommagées
- Pages restored and/or laminated/
Pages restaurées et/ou pelliculées
- Pages discoloured, stained or foxed/
Pages décolorées, tachetées ou piquées
- Pages detached/
Pages détachées
- Showthrough/
Transparence
- Quality of print varies/
Qualité inégale de l'impression
- Includes supplementary material/
Comprend du matériel supplémentaire
- Only edition available/
Seule édition disponible
- Pages wholly or partially obscured by errata slips, tissues, etc., have been refilmed to ensure the best possible image/
Les pages totalement ou partiellement obscurcies par un feuillet d'errata, une pelure, etc., ont été filmées à nouveau de façon à obtenir la meilleure image possible.

Additional comments:/
Commentaires supplémentaires:

[Printed ephemera] 1 sheet (verso blank)

This item is filmed at the reduction ratio checked below/
Ce document est filmé au taux de réduction indiqué ci-dessous.

10X	14X	18X	22X	26X	30X
<input type="checkbox"/>	<input type="checkbox"/>	<input type="checkbox"/>	<input type="checkbox"/>	<input checked="" type="checkbox"/>	<input type="checkbox"/>
12X	16X	20X	24X	28X	32X

The copy filmed here has been reproduced thanks to the generosity of:

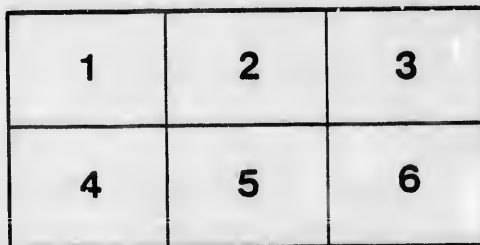
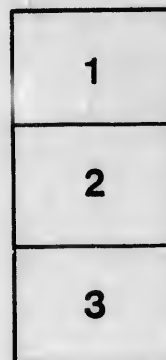
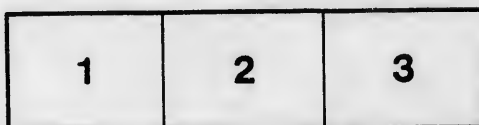
D. B. Weldon Library
University of Western Ontario
(Regional History Room)

The images appearing here are the best quality possible considering the condition and legibility of the original copy and in keeping with the filming contract specifications.

Original copies in printed paper covers are filmed beginning with the front cover and ending on the last page with a printed or illustrated impression, or the back cover when appropriate. All other original copies are filmed beginning on the first page with a printed or illustrated impression, and ending on the last page with a printed or illustrated impression.

The last recorded frame on each microfiche shall contain the symbol \rightarrow (meaning "CONTINUED"), or the symbol ∇ (meaning "END"), whichever applies.

Maps, plates, charts, etc., may be filmed at different reduction ratios. Those too large to be entirely included in one exposure are filmed beginning in the upper left hand corner, left to right and top to bottom, as many frames as required. The following diagrams illustrate the method:



L'exemplaire filmé fut reproduit grâce à la générosité de:

D. B. Weldon Library
University of Western Ontario
(Regional History Room)

Les images suivantes ont été reproduites avec le plus grand soin, compte tenu de la condition et de la netteté de l'exemplaire filmé, et en conformité avec les conditions du contrat de filmage.

Les exemplaires originaux dont le couverture en papier est imprimée sont filmés en commençant par le premier plat et en terminant soit par la dernière page qui comporte une empreinte d'impression ou d'illustration, soit par le second plat, selon le cas. Tous les autres exemplaires originaux sont filmés en commençant par la première page qui comporte une empreinte d'impression ou d'illustration et en terminant par la dernière page qui comporte une telle empreinte.

Un des symboles suivants apparaîtra sur la dernière image de chaque microfiche, selon le cas: le symbole \rightarrow signifie "A SUIVRE", le symbole ∇ signifie "FIN".

Les cartes, planches, tableaux, etc., peuvent être filmés à des taux de réduction différents. Lorsque le document est trop grand pour être reproduit en un seul cliché, il est filmé à partir de l'angle supérieur gauche, de gauche à droite, et de haut en bas, en prenant le nombre d'images nécessaire. Les diagrammes suivants illustrent la méthode.

LIST OF VOTERS

FOR THE

VIL'AGE of PARKHILL

FOR 1876.

SUB-DIVISION NO. ONE.

SUB-DIVISION NO. TWO

Atkinson, John, Ellen st. N, lots 37 & 38,
 Adair, Daniel, John and Ann st. lot 15.
 Benn, Wm., Broadway S. lot 15.
 Boyce, Wm. King, lot part of 5,
 Bugler, Lewis, King st., lot part of 11,
 Bell, Chas. R., King st. lot 5 & part of 6,
 Boucher, D., Main st. E, lot 23,
 Bradt, Jonah, do do 25 & 26,
 Barkley, J E, do W lot part of 2,
 Barker, Robert, Ellen st. S, lot 21,
 Bastard, Wm., Broadway st. N, lot 9,
 Barrett, John, Ellitto st. S
 Bellington, Nathan, John st. S, lot 16,
 Campbell, J. D., Main st. E, lot 7,
 Curtis, Geo, Main st. W lot part of 1,
 Cruickshank, D. L, Main st. W, lot part of 2,
 Cruickshank, John, do do do 81, 92 & 93
 Cameron Malcome, Broadway st, lot 6, 7 & 8,
 Curry, John, Broadway N. lot 13,
 Colivan, Chas., John st. N, lot 11,
 Cameron, John, Ann st. W, lot part 1,
 Clement, Geo. Westwood st. lot 6,
 Cook, Wm, Duke st. N, lot 4 & 7,
 Cross, John, Prince st. N, lot part of 3,
 Clinis, John, Queen st. E, lot 7, 8 & 9,
 Coats, Jas, John st. N, lot 16,
 Clement, Jas, John st. S, lots 3 & 4,
 Dickson, Wm. King st. lot part of 2,
 Dnlmage, Jno. do do do 5,
 Downing, M.M. do do do 11
 Darby, John do do do 12
 Drought, John, Main st. E, lot 5,
 Dunn, Jas, John st. lots 11 & 12,
 Denner, Adam, Westwood st. lot part of 1,
 Eccles, Daniel, King st. lot part of 4,
 English, John, Main st. lot part of 5,
 Eberley, David, Mulcraig st. lot part of 5,
 Fletcher, Wm, King st. lot part of 3,
 Fletcher, Jos, do do do do
 Fullerton, Jas, Broadway st. lot 11,
 Fyke, Augustus, Ann st. E,
 Graham, Wallace, King st. lot part of 1,
 Grimwood, Chas. Main st. E, lots 21 & 24,
 Goodman, H. R. do W, lot 1,
 Goodman, Kenneth, Ellen st. N. lot 20,
 Gillis, S, do do 16,
 Gilchrist, Peter, Ann st. W. lot part of 6,
 Grundy, John, Westwood st. do 2,
 Grafton, Wm, do do do 2,
 Grant, Jas., Queen st. lot 2,
 Graham, D, Prince st. lot 3,
 Gilgallon, R, John st. S, lot 8 & 9,
 Gillis, G, Broadway st. lot 8,
 Giblon, Walter, Tain st. N, lot 21,
 Howley, John, King st. lot 7 & 8,
 Hendra, S, Main st. E. lot part of 1,
 Houston, John, Main st. E, lot 2,
 Hadkinson, John, Mulcraig st. lot 9 & 10,
 Hall, John, John st. N, 9 & 10,
 Hamilton, Ralph, John st. N, lot 16,
 Holmes, B.F., Westwood st. lot part of 7,
 Hayes, Geo, do do 15,
 Henderson, Wm, Prince st. S, lot part of 4,
 Jackson, Wm, Mulcraig st. lot 7,
 Jackson, Jas, Broadway N, lot 12,
 Jackson, Peter, Centro st. lots 3 & 8,
 Koppelberger, H B, King st. lot part of 1,
 Kelley, Geo. Catherine st. E, lot 6,
 Kittridge, H H, Broadway S, lot 9,
 Kay, Wm. Ann st. E, lot 7,
 Kent, James, Elliott st. W,
 Kirbyson, Alonzo, Westwood st. lot 9,
 Lighthart, Adam, Queen st. lot 1,
 Leonard, Hugh, Prince st. lot 5,
 Maybury, T A, King st. lot part of 1,
 McEagart, Alex. do do do 1,
 McNeil, John, do do do 3,
 McKenzie, J do do do 5,
 McKenzie, D, do do do 5,
 McNeil, D. do do do 6,
 Mulvaney, T, do do do 11,
 Munro, Wm, do do do 11,
 Macdonald, A A, do do do 11,
 McDonald, John, King st. lot part of 2 & 3,
 McLeod, Donald, Main st. lot part of 1,
 Macalpine, R S, do do E, lot 4,
 Macdonald, Rodk, do do do 12,
 Maddocks, Thos do do do 13 & 14,
 Macdonald, John, do do do 5,
 McInnis, Dougal do do W do 6,
 McDonald, A D, do do W, lot part of 14,
 Macdonald, Ronald, Ellen st. N, lot 16,
 McPhee, John, Roskin st. S. lot 80,
 McLean, Donald, do do do 81,
 McLeod, John, do do do 81,

Arnold, Bridgewater, Mill st. S, lot 5,
 Adair, Abraham, Ellen st. N, lot 9
 Alcornbrook, Lyman, Pearl st. E, lot 15 & 16,
 Allin, Henry, Delaware st. E, lots 1, 2, 3, 4, 5 & 6,
 Aiken, Jas., William st. S, lots 25 & 26,
 Adair, Frank, Ann st. lots 29 & 30,
 Bond, Geo., McGillivray st. lot 15,
 Bliss, C. E., Main st. E, lots 1 & 2,
 Bruce, Alex., do E, lot pt of 5,
 Burns, Alex., do lot 25,
 Bainten, Wm., do lot 24,
 Baird, Wm., McGillivray st. lot 13,
 Baird, H. C., Station st. E, lots 17 & 18,
 Benway, Frank, McGillivray st. W, lot pt of 1,
 Brewer, Oscar, Mill st. N, lot 5,
 Burns, Taso, Station st. W, lots 2, 3 & 4,
 Bloomfield, Wm., William st. N, lot 2,
 Burns, John, Richmond st. W, lots 46 & 47,
 Brown, Jos., Pearl st. E, lots 3 & 4,
 Burley, Ira, do E, lots 17, 18 & 19,
 Bowles, John, William st. N, lots 28 & 29,
 Campbell, A. D., Main st. E, lot 6,
 Caw, William, do lot 8
 Coby, Geo., do lot pt of 10,
 Clinis, Peter, do lot 22,
 Cotter, Duncan do lot 32,
 Cameron, D. E., McGillivray st. E, lot pt of 2,
 Chamberlain, E. G., McGillivray st. lot 5,
 Clark, Wm., Delaware st. W, lots 7 & 8,
 Calder, Roderick, Mill st. S, lot 6,
 Coote, Thos., Mill st. S, pt of 2,
 Coote, John, Mill st. S, lot 2,
 Cramer, John, Pearl st. E, lot 11,
 Clark, James, do W, lots 20 & 21,
 Cook, Geo., do W, lot 10,
 Conrad, Jos., do W, lot 22,
 Sathro, Samuel, Elk st. W, lots 1 & 4,
 Campbell, Donald, Ann st. N, lots 25 & 26,
 Dignan, Thos., McGillivray st. lot pt of 7,
 Danney, John, do lot 12,
 Dickson, Thos., Mill st. S, lot 7,
 Darrah, John, Broad st. N, lot 4,
 Darbey, E., Station st. E, lot 28,
 Davis, John, William st. S, lots 7 & 8,
 Delaney, William, Pearl st. E, lots 3 & 4,
 Ellwood, William, Main st. lot pt of 11,
 Elliott, Andrew, Mill st. lot part 7,
 Enticknap, A. D., do lot pt of 1,
 Elliott, Wm., Station st. lots 25, 26 & 27,
 Eckhart, Hubert do lots 32, 33 & 34,
 Emery, Geo., Emily st. S, lot 9,
 Elliott, John, Pearl st. W, lot 17,
 Fussell, Frank, Main st. lot 24,
 Fyke, Daniel, do lots 26 & 27,
 Fountain, Jas., Mill st. lot 5,
 Fairbanks, Chas., Pearl st. W, lot pt of 20,
 Forrest, Jas., Pearl st. E, lots 5 & 6,
 Gleason, Cornelius, William st. N, lots 8 & 9,
 Gordon, W. H. Main st. E, lot pt of 5,
 Gibbs, John, McGillivray st. lot pt of 1,
 Gleason, John, Union st. lot 3,
 Graham, Thos., Pearl st. W, lot 15,
 German, Wm., Broad st. S, lot pt of 1 & 2,
 Hill, N. L., Main st. lots 1 & 2,
 Hayward, Jas., Main st. lot pt of 12,
 Hawkey, John, McGillivray st. lots 8, 9 & 10,
 Harrison, John, Mill st. 2 & 3,
 Hannah, John, Station st. lot 14,
 Humaford, do do E, lot 19, pt of 20
 Hudson, John, do do do lots pt of 23 & 24
 Hudson, Jas, do do do 29, 30 & 31
 Hendra, John, Broad st. S, lots 4 & 5,
 Hardy, Robert, Emily st. N, lots 4 & 5,
 Hambleton, John, William st. N, lot 10,
 Hardy, Jas, Pearl st. E, lots part of 7 & 8,
 Hayes, Jas, do do W, do 18 & 19,
 Hastings, Wm, Hasting st. lot part of 5,
 Haltz, John, Elk st. S, lots part of 5 & 6,
 Hill, C P, Main st. E, lot 14,
 Irwin, Henry, Ann st. N, lot 31,
 Jarvis, John, Mill st. lots 17 & 18,
 Johnston, Andrew, Station st. lot 28,
 Johnston, Wm, Broad st. N, lot 5,
 Johnston, Geo, Pearl st. W, lot 12,
 Kiffer, Jacob, McGillivray st. lots 22 & 23,
 Knight, Thos, Mill st. N, lot part of 6,
 Kent, Thomas, do do do do
 Kenny, Cornelius, Station st. W, lots 12 & 13,
 Kilbourn, Alonzo, Union st. Park lot 2,
 Kerr, Wm, Elk st. lots part of 5 & 6,
 Lake, Stephen, Mill st. S, lots part of 3 & 4,
 Lane, Henry, Station st. W, lot 10,
 Longhurst, Jessie, Broad st. S, lot part of 7,
 Lavis, Henry, Emily st. S, lot 3,
 Lavis, Henry, Emily st. S, lot 3,

McLeod, John, do do do 81,
 McPhee, John, Roskin st. S. lot 80,
 McLean, Donald, do do do 81

Longhurst, Jessie, Broad st. S, lot part of 7,
 Lavis, Henry, Emily st. S. lot 3.

McLean, Donald, do do 31,
 McLaughlan, do do do 31,
 McPherson, Peter, Main st. N, lot 15,
 McPhee, John, Roskin st. S, lot 30,
 McLean, Donald, do do do 31,
 McLaughlan, Jas, Tain st. lots 22 & 23,
 McNeil, Archibald, Catharine st. lot 43,
 McKinnon, Neil, Broadway N, lot 2,
 Mott, John, do do 15,
 McLean, Allan, do S, do 1,
 McNeil, Alexander, do do 14,
 McCuish, do John st. N, 17,
 McGregor, Peter, Main st. lot 18,
 McEachan, Jas, John st. N, lot 8,
 Meredith, Ed, do do 9 & 10,
 Murray, Thos, do N, 13,
 McLeilan, John, do S, 13,
 McFarlane, Patrick do S, 14 & 15,
 Mott, Enoch, do S, 18,
 Mitchell, Thos, Apr st. E, lot 7,
 McKinnon, John, Albert st. W, lot 3,
 McGregor, D C, Westwood st. lot 2,
 McKenzie, John, Queen st. E, lot 7,
 McDonald, John, Duke st. S, lot 5 & 6,
 McKenzie, L, Prince st. N, lot 7,
 Marria, W O, do do S, do 1,
 McCalm, Duncan, Main st. W, lot 3,
 McKenzie, Duncan, do do E, do 5,
 McLeod, Simon, King st. lot part of 4,
 Munro, Geo, John st. S, 10,
 McLarty, D, Broadway st. S, lot 1,
 McKinnon, John, Westwood st. lot part of 2,
 McLure, D, Queen st. lot 3,
 McIntosh, D, Ann st. E, lot 7,
 McDonald, Donald, Westwood st. lot pt. of 1,
 Noble, John, King st. lot part of 2,
 Newcombe, Wm, King st. lot part of 4,
 Niblock, John, Ellen st. lot 17 & 18,
 Nichols, Foster, Main st. W, lot part of 14,
 Niblock, James, Mulcraig st. lot 11 & 13,
 Nairn, Alex, Elliott st. W,
 Odwyre, Thos, John st. lot 17,
 Powell, Jas, King st. lot part of 10,
 Pope, Wm, Main st. W, lot part of 7,
 Parker Renten, Ellen st. N, lot 36,
 Perie, Alex, Ardross st. N, lot 30 & 31,
 Powell, Thos, do do S, do 26,
 Pursell, Jas, Catharine st. W, lot 39 & 40,
 Peck, Simon, Prince st. S, lots 2 & 3,
 Peck, Richard, King st. lot part of 10,
 Powell, Henry, King st. lot part of 3,
 Ross, John, King st. lots part of 1 & 2,
 Ross, Jas, do do 4,
 Ross, Alex, Main st. lot part of 1,
 Richardson, Fred, Main st. W, lot 15,
 Rutherford, Walter, Ellen st. lots 17 & 18,
 Robertson, John, John st. N, lots 3 & 5,
 Ryan, Thos, Westwood st. lot 21,
 Ross, David, Main st. W, lot part of 6,
 Raymond, Alex, do W, lot 3,
 Soda, Jas, King st. lot part of 10,
 Sanvidge, Jno, do do do 10,
 Simpson, Wm, do do do 12,
 Smith, Alex, Main st. lots 19 & 20,
 Stewart, John, Ardross st. lot 26,
 Streeter, Henry, Broadway & King st.
 Shearer, John, Broadway st. S, lot 15,
 Steel, Roderick, John st. N, lot 12
 Shears, Jas, do do do 14,
 Shoulicc, Wm, Ann st. E, lot 4,
 Stall, Jas, Westwood st. E, lot part of 7,
 Smith, E G, do do do 10,
 Siddall, Jos, Queen st. lots 4, 5 & 6,
 Scott, John, King st. lots 5 & 6,
 Saynor, Geo, Main st. lot part of 1,
 Tudor, Sanford, Main st. E lot
 Tedder, Jas, do do W, do 12,
 Thomas, Thomas, Ann st. E, lot part of 6,
 Thompson, Andrew, Duke st. S, lots 1, 2 & 3,
 Thompson, Wm, Broadway st. S, lot 12,
 Thompson, W M, Westwood st. lot part of 1,
 Volway, John, King st. lot part of 6,
 Vanalstan, B T & D B, Main st. W, lot pt of 7
 Vanalstan, W B, do do 7
 Volway, Jas, Prince st. N, lot 6,
 Wall, Thomas, Westwood st. lot 8,
 Wilson, Angus, King st. lot part of 10,
 Wallace, Wm, Main st. B, lot 8,
 Wells, Wm, Westwood st. lots 17 & 18,
 Wind, Anthony, Broadway st. S, lot 8,
 Wilson, T J, John st. S, lot 17,
 Willard, John, Westwood st. W, 20,
 Willard, J B, John st. S, lots 3 & 4,
 Webb, Geo, Centre st. N, lots 6 & 7,
 Watson, Thos, Prince st. lot 3,
 Woodhall, T B, Ellen st. N, lot 19,
 Young, Mathew, Catharine st. E, lot 67,
 York, John, Elliott st. E, lots 1 & 2.

Lane, Henry, Station st. W, lot 10,
 Loughurst, Jessie, Broad st. S, lot part of 7,
 Lavis, Henry, Emily st. S, lot 3,
 Little, Joseph, McGillivray st. lot 24,
 Miller, Brastus, Main st. W, lot part of 13,
 McIntyre, Daniel, Main st. W, lot 3,
 Mathews, Harvey, Main st. W, lot 23,
 Mitchell, Arthur, do do do 35,
 Marr, Joseph, Main st. lots 44, 45 & 46,
 Marsden, Jas, Deleware st. lots 7 & 8,
 Morrison, John, McGillivray st. lot part of 3,
 McKenzie, Donald, do do 3,
 McInnis, Jas, do do 4,
 McNamers, Wm, do do 6,
 Munro, Wm, do do 7,
 Miller, Frank S, do do 19 & 20,
 Miller, J B, do do 18
 Matnews, Stephen, do do 16,
 Mathers, Daniel, do do 19 & 20
 McDonald, Wm, Mill st. lot part of 1,
 McLeod, Donald, do do S, lot 16,
 Maguire, Jas, Station st. E, lots part of 20 & 21,
 Munro, Andrew, Broad st. N, lot 11,
 Mark, Edward, Emily st. lot 10,
 McPherson, Alex, William st. lots 1, 2 & 3,
 McFadden, Jas, Richmond st. W, lot 43,
 McWilliams, Wm, Pearl st. E, lot 13,
 Maguire, Thompson, Pearl st. E, pt of 20 & 21
 Mallon, C H, Pearl st. W, lots part of 12 & 13,
 McPherson, A, do do do do
 Manes, Ed, do do do do
 Mann, Henry, do do do do 17
 McCubbin, Jno, do do 15 & 16,
 McGillivray, F, Ann st. N, do 25 & 26,
 Newton, Elias, Broad st. N, lots 9 & 10,
 Nott, Jas, Pearl st. E, do do
 Porto, Robert, Main st. lot 9,
 Patrick, R, McGillivray st. lot 11,
 Phippen, Nicholas, Mill st. N, lot 9,
 Phippen, Robert, do do do 11 & 12,
 Paxman, Adam Broad st. S, lots 6 & 7,
 Phippen, Henry, Emily st. N, do 6, 7 & 8,
 Paxman, Daniel, Deleware st. W, lots 9 & 10,
 Ponfield, Thos, Ann st. N, lot 31,
 Ross, Alex, Main st. lot part of 11,
 Ross, Wm, Mill st. N, do do 4,
 Ross, Hugh, do do do 4,
 Reid, Wm, Station st. W, lots 15 & 16,
 Robinson, Thos, Union st. W, lots 60 & 61,
 Robinson, Geo, Pearl st. E, lot 11,
 Rumohr, J H, William st. N, lots 6 & 7,
 Rumohr, H M, William st. N, do do
 Simons, T J, Main st. Lots 30 & 31,
 Seoon, John, Main st. E, part of lot 4,
 Sparling, Wm, Main st. lot part of 5,
 Smith Nelson, do do 21,
 Stoffer, Wellington, McGillivray st. N, lot 12
 Shoults, Wm, Mill st. N, 5 & 6,
 Shoults, John, do do lot part of 6,
 Smith, C H, do do do 5,
 Scott, John, do do do 6,
 Shantz, A B, Broad st. S, lot 8,
 Scott, Robert, Emily st. S, lot 6
 Schram, Ed, William st. S, lot 9,
 Saynor, Wm, Elk st. lot C, & D,
 Stonehouse, D L, Station st. E, lot 19 pt of 20
 Tnek, Ed, Ann st. N, lot 34,
 Taylor, Jas, McGillivray st. lot part of 2,
 Taylor, Samuel, do do 16,
 Tedder, Jas, Main st. lot part of 4,
 Thompson, Jos, Mill st. S, lot 8,
 Waun, Leonard, Pearl st. E, lot 12,
 Winn, Geo, Main st. lot part of 4,
 Zaph, Augustus, do do 3,

I. H. H. KITTREDGE, Clerk of the Municipality of the Village of Parkhill, in the County of Middlesex, do hereby certify that the above is a correct list for the year 1876, of all persons appearing by the last revised Assessment Roll of the said Municipality to be entitled to vote at elections for members of the Legislative Assembly; and that a copy of such list was first posted up in my office at Parkhill, on the thirtieth day of June, A. D., 1876. And I hereby call upon all electors to examine the said list, and if any omissions or other errors are perceived therein, to take immediate proceedings to have the said errors corrected according to law. Dated this twenty-seventh day of June, A. D., 1876.

H. H. KITTREDGE,
 Clerk of the Village of Parkhill.

