

Will be published every SATURDAY by ANDREW LIPSETT, at the OFFICE ON QUEEN STREET, Opposite City Hall, F. Ton, N. B. Subscription, - \$1.00, in advance

The Agriculturist.

A WEEKLY JOURNAL DEVOTED TO LITERATURE, AGRICULTURE, AND NEWS.

VOL. II.

FREDERICTON, N. B., JULY 5, 1879.

NO. 13

BOOK AND JOB PRINTING

of all description

EXECUTED ON MODERATE TERMS

RATES OF ADVERTISING.

Ordinary advertisements, 10c per line, 1st insertion, \$1.00 Each subsequent insertion, 5c

BUSINESS ADVERTISEMENTS

inserted for 6 months or 1 year on moderate terms.

The number of weeks an advertisement is to be inserted should be clearly stated. When this is not done it will be continued until ordered out, and charged the full time it has been inserted.

SUBSCRIBE

FOR THE 'AGRICULTURIST'

ONLY \$1 PER YEAR,

Payable in advance.

Every Description of

BOOK & JOB PRINTING

Executed Promptly

AND AT

LOW RATES

CUT THIS OUT.

Vertical subscription form text: Sir, Please find enclosed the sum of \$1. in payment for one year's subscription to the 'Agriculturist.' Yours, &c.

LOW RATES

Every Description of

BOOK & JOB PRINTING

Executed Promptly

AND AT

LOW RATES

SUBSCRIBE

FOR THE 'AGRICULTURIST'

ONLY \$1 PER YEAR,

Payable in advance.

Agriculture.

Rot and Mildew in Grapes.

A correspondent of the Country Gentleman, who has given much attention lately to the subject of grape rot and mildew, treats it at length in the following terms:—

1. Rot and mildew and other fungous growths can injuriously affect plants of the higher order, like the grape, only when they are in a debilitated condition and there is an interruption of the processes of elaboration of the plastic material, during which elaboration the plant, by its vital functions, is enabled to resist the advance of germinating fungous spores.

2. This debilitated condition in the case of the grapevine is, as a general rule, brought about by two separate causes: First, the partial exhaustion of the soil in the inorganic and organic elements of plant food—the grapevine, as well as any other fruit-bearing plant, demanding inorganic or mineral substances in the soil, and notably the salts of potash and phosphoric acid, together with a corresponding proportion of nitrogen and other organic substances, which are furnished partly from the soil, but chiefly from the atmosphere. The second cause of debilitation arises from the sudden changes of temperature. According to the distinguished botanist Sachs, all plants perform the functions of growth and development between two definite limits of temperature—limits which never fall below 32°, or the freezing point, on the one hand, or rise above 122° on the other. Thus the vital functions of the plant may be partially arrested, intercepted, or at least rendered less active, by extremes of temperature, which in case of those plants most affected by rot and mildew will be found to be between 50° and 113°.

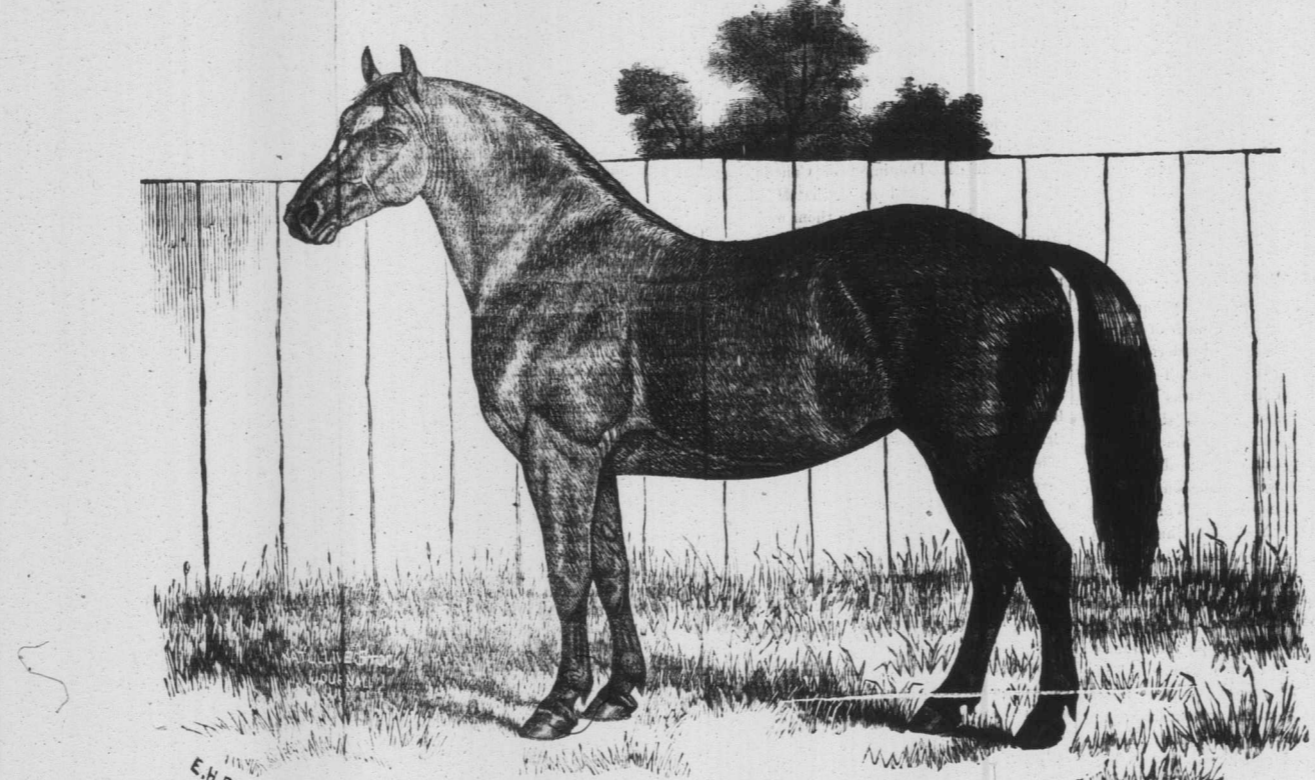
But during the processes of growth, the transformation of plant food from its crude state into plastic material, and its assimilation by the plant, takes place most actively and healthily at something near the mean of the two temperatures, say at 80°—these processes being slackened and finally arrested as the temperature falls on the one hand, or rises on the other.

3. The functions of the plant being arrested by a too high or too low temperature, it is deprived of the power of resisting the attacks of fungi, and an approach to both these extremes of temperature favors the development of certain fungi, the assaults of which are made when the grapevine has the least power of resistance, and the fungi have the greatest power for attack. Thus the grapevine, under ordinary methods of cultivation, is not only sufficiently fed with potash, phosphoric acid and other mineral substances, but it is also made to suffer from the debilitating effects and influences of a high temperature at mid-day and a low one at night. In fact, the vine is subjected to starvation and exposure both, and it is not strange the result is almost universal mildew or rot.

4. The vine districts of Ohio, Indiana, Illinois and Missouri, so far as climate is concerned, are liable to great extremes of temperature between summer and winter, and also between one summer or winter and another. The same wide divergencies characterize the atmospheric conditions in summer—sometimes the vine having to submit to blazing hot and humid days, with cool, or even cold and dewy nights, and in others to undergo the trying ordeal of heat and drought, with the mercury at 120° to 125° at 2 o'clock, and twelve or fourteen hours thereafter to a fall of 40° or 50°.

5. The development and growth of rot and mildew are found to be most pronounced and active where these changes of temperature and atmosphere are most marked. During and after electrical storms, with heavy rains, interrupted or followed by bursts of sunshine which almost scald, and followed by warm and wet, or cool and very dewy nights, both rot and mildew immediately appear in their most active and virulent forms. On the contrary, where the summer season is long, warm and dry, but not too dry, where all the conditions are adverse to fungous growth, then the grapevine is making a comparatively slow growth, and ripens wood and fruit equally well.

6. So, when foreign and tender varieties of grapes are planted out of doors, though ample soil and border preparations are made for them, and complete winter protection afforded, they sooner or later suffer and succumb to rot or mildew. But when those same vines are given shelter, and are protected from night dews, radiation and evaporation, and other adverse atmospheric influences, they



"Undine," the property of M. W. Dunham, Esq., Wayne, Ill., U. S.

make splendid crops, without the intervention of artificial heat. And so of the tender kinds of native grapes, when they are trained along a wall, and more or less protection afforded by projecting roofs or partial cover of anything, which, while it does not deprive them of food, light or heat, interferes with the fall of heavy dews and active evaporation, and radiation, these vines more or less successfully escape mildew and rot.

7. But even when the conditions of soil and temperature are best suited to the vine, as on the grape-producing islands of Lake Erie, the vine now rots and mildews nearly as badly as elsewhere, notwithstanding there is no perceptible change in the winter or summer temperature, or in the hygrometric condition of the atmosphere. For twenty years grapes were grown on the same spot successfully, without manures or fertilizers of any kind. During the earlier part of this term, rot and mildew were scarcely known, but in later years both have developed to such an extent that their crops have become almost total failures. This state of affairs seems to point to the important consideration that while soil, situation and temperature have much to do with successful grape growing, the main point is to keep the soil up to its original fertility, by the liberal use of fertilizers, especially the salts of potash, lime and phosphoric acid.

8. Successful grape growing then seems to depend on two important conditions: The soil must be kept in a state to afford all needed organic and inorganic elements of plant food, and in unfavorable seasons some contrivance must be used to prevent mildew or rot, by protecting the vine from heavy dews and sudden changes of temperature, between the day and night. Those delicious table grapes, the Chassels in variety, and the Muscats and Hamburgs, with which the tables of the wealthy of Paris are supplied, are mostly grown in the neighborhood of Fontainebleau, near that city, in the open air. But the vines are trained after a peculiar system, on stone walls about seven feet high, having a metal or wooden coping projecting about 40 inches. This wall and coping are said to be equal in the matter of grape ripening, to a southern exposure of two and a half degrees of latitude, independent of the insurance which they afford against heavy dews, too sudden evaporation, and the frosts which are apt to follow from active radiation.

In conclusion, it may be added that several more strong points may be made by more or less clearly pointing out how our grape propagation has had an inevitable tendency to weaken the vine, and finally to destroy its constitution, hardiness and vigor. Most hardy native sorts suffer from mildew and rot in direct proportion to the length of time they have been propagated, and bought and sold as common stock, in the commercial nurseries of the country. In the propagation of the vine there are certain well known principles which must govern in practice, or the result will be a rapid deterioration of the vine, and its final extinction.

Hints on Sheep Husbandry. It should be the object of the farmer to keep those domestic animals which will pay the best for the food they consume. A certain amount of every kind of stock is necessary for carrying on the farm, and this the farmer must keep without regard to direct profit. Sheep husbandry to be successful requires intelligent and careful management. But when well managed, doing the work, cows to supply the family with milk, butter and cheese, there is no stock that the farmer can

that would be benefited by plowing twelve inches deep, but they are scarce. The rule may be said to be: Never turn up over one or two inches of unfertile subsoil in one season; and when so turned up the land should receive a dressing of manure."

Washing and Shearing Sheep.

We question the policy of making any pretence of washing sheep. We believe the practice often results in injury to the sheep, and, from the manner in which it is done, but increases the difficulty of determining the true value of the wool. It is the next thing to impossible to wash sheep in cold water anything like clean without keeping them in the water so long as to imperil their health, and the amount of dirt removed generally depends upon the honesty of the washer. Even if the owner of the flock is honest, his employees may not be, and the result is that many lots of wool claiming to be washed contain nearly as great a proportion of dirt as others which make no pretence of washing. If buyers would generally agree to discourage the practice of washing sheep, the matter of buying wool would be simplified.

We have had considerable practice in washing sheep, and we have seldom participated in such an operation without having our indignation aroused by the cruel, brutal way in which some of the men employed would seize the sheep by their wool plugging them into cold water, nearly strangling them, handling them so roughly as to cause them unnecessary fright and suffering, and finally turn them out upon the banks so weakened by their treatment as to fall down in the mud, to be again seized and plunged under the water to rinse off the mud. We think the sooner such washing is discontinued the better it will be for the sheep husbandry of the country.

Now, the next question, after having decided about washing, is, when should sheep be shorn? If allowed to wear their fleeces too late in the season, they will suffer from heat, and if deprived of them too early, they will be rendered uncomfortable, and possibly subjected to severe colds from cold snaps, and perhaps from cold storms. As farmers used to manage their flocks, the safer way undoubtedly was to allow the sheep to retain their fleeces until warm weather is fully established, say about the middle of June. But flock masters take better care of their sheep now than they did twenty or thirty years ago, when they did not seem to be fully convinced that shelter is necessary, and would have laughed at the idea of yarding and housing sheep in summer to protect them from cold nights, or cold storms. Now our most successful flock masters have suitable yards and sheds and conveniences for yarding them when the weather is unfavorable, and knowing the danger of exposing the shorn sheep to the influences of cold changes, will take the care to yard them, and properly feed them till more auspicious weather returns.

With such careful attention to the welfare of the flock, it may be advisable to shear earlier in the season, and so relieve the animals of their oppressive burdens before they will be likely to experience many very warm days. We think if the farmer is careful to house his flock in unfavorable weather, its welfare will be promoted by shearing the latter part of May, or at least quite early in June.

How to Manage Celery.

Set celery in shallow furrows, drawn four feet apart by a light plow. The plants should be six inches apart in the row, and pains should be taken to have the soil pressed firmly about the lower part of the root. If the ground is thoroughly moistened at the time of planting, there is no occasion for shading the plants. All that is necessary in the way of culture for some time after transplanting is to keep the soil well stirred between the rows. When the plants have attained a height of from ten to fifteen inches, commence the operation of "earthing up."

The soil is first thoroughly loosened upon either side of the rows; then as all the leaves of each plant are gathered together and held in an upright position, the soil is gradually drawn around it to the height of several inches. The operation is very simple, yet like everything else, requires some experience before it can be skilfully done. In our own practice, we have found that three men, or two men and a boy, working together, perform the work in the cheapest and best manner, one man standing upon each side of the row, and with a hoe drawing the earth about the plants, which are held in proper position by the third. As the celery grows, more earth is from time

to time drawn up around it. It is not necessary to hold the plants after the first operation. The only precautions are, not to earth up too much at a time, and to be sure that the earth is fine, and not lumpy or cloddy. Care should also be exercised to prevent any earth from getting between the stems of the outer and inner leaves.

Berkshire Swine.

The following are the approved points and marks of Berkshire Swine: Color black, with white on feet, face, tip of tail, and occasional splash on the arm. While a small spot of white on some other part of the body does not argue on impurity of blood, yet it is to be discouraged, to the end that uniformity of color may be attained by breeders. White upon one ear, or a bronze or copper spot on some part of the body, argues no impurity, but rather a reappearance of original colors. Markings of white other than those named above are suspicious, and a pig so marked should be rejected. Face short, fine and well shaped, broad between the eyes; ears generally almost erect, but sometimes inclined forward with advancing age, small, thin, soft, and showing veins; jaw full; neck short and thick; shoulder short, from neck to midding back from back down; back broad and straight, or a very little arched; ribs long and well sprung, giving roundness of body; short ribs of good length, giving breadth and levelness of loin; hips good length from point of hips to ramp; hams thick, round and deep, holding their thickness well back and down to the heels; tail fine and small, set on high up; legs short and fine, but straight and very strong, with hoofs erect and legs set wide apart; size medium; ofal very light; hair fine and soft; no bristles; skin pliable.

Coloring Butter.

A dairyman asks whether we regard it as a morally right to color butter, and thereby deceive the purchaser into believing its fine color indicates its excellence? We think our correspondent too morbidly sensitive on this point altogether. As butter made at the season when the grasses are at their best, has naturally a light golden color, and its flavor and aroma are then the finest, the consumer very innocently connects, the fine flavor with the color, and refuses to believe butter good unless bearing this pleasing tint. Now, as the natural coloring matter has no taste, and really has nothing in itself to do with the flavor, the color at its best is only an ornament. And when consumers insist upon this fictitious mode of valuation, what is even the conscientious butter maker to do? As a fictitious test is insisted upon, the better maker has no alternative but to allow the consumer the pleasure of tasting his butter through his imagination—when, looking upon its rich golden tint, he can smell the clover blossoms in January. Why should he be deprived of this pleasure? No, it appears to us that the butter maker is only responsible for the use of a harmless substance, which, while it does no injury, will add to the consumer's happiness as well as the producer's profit.—E.

Training the Tomato.

A report of the Maine Pomological Society contains an account of a novel method of training the tomato plant. Stakes, seven or eight feet long, were inserted in the ground the last of May, three feet apart, in a warm, sheltered location, and strong tomato plants were procured, which had been started under glass, and contained one or two blossom buds. These were planted near the stakes. The plant was then tied to the stake with listling, and all the side branches which had pushed at the axillary or angles formed by the separation of the leaves were pinched or cut out with scissors, so as to compel the plant to grow on a single stem; and every week during the season these branches were removed, and the stems from time to time were tied to the stake. When a sufficient number of clusters had been formed, the remainder were removed, so as to concentrate the whole energies of the plant to the growth and ripening of tomatoes; and the heaviest branches were supported by tying them to stakes. As the result, the ripening of the tomato by this method is accelerated, and its flavor is improved because every part of the plant is exposed to the free action of the sun and air. It is not soiled by coming in contact with the ground; is not so apt to decay, and more ripe tomatoes can be raised in a limited space; but it requires constant care and industry.

The June report of the Illinois Department of Agriculture shows an increase in the acreage of corn of 233,706 acres over 1878. The crops are in a much better condition than last year.

What Becomes of Our Bodies.

With a very new approach to truth, the human family inhabiting the earth has been estimated at 700,000,000. Now, the weight of the annual matter of this immense body...

Communications.

For the "Agriculturist."

MR. EDITOR.—Any person present at the meeting of the City Council on Wednesday evening last, could well understand the motives which prompted a certain Alderman...

A LAW ABIDING CITIZEN.

Frederick, June 4, 1878.

The Agriculturist.

FREDERICK, N. B., JULY 4, 1878.

Domestic Day and Canada's Future.

The coming and passing of Dominion Day, July 1st, has awakened reflections on the history of the United Provinces in the past...

It is a great pleasure to me to see that the Dominion Day is not a better offer than the one which has been made...

The Dominion, it may be said, has a great future before it, but if it goes on as it has during the last twelve years...

A pamphlet has been lately published in Montreal by a British emigrant to Canada of fifty-six years standing...

Our Finance Minister now informs us that our obligations to the amount of \$40,000,000 will mature and must be paid...

A boy seven years of age was seen to fall from a building in Hudson Street on June 2. After considerable delay...

Swarms of butterflies are reported from southern and central France. They first appeared in Italy...

A statement has just been published at St. Petersburg showing something of the present overcrowded condition of the Russian gaols...

The Rival Kent Lines. Last week we mentioned that Walter M. Beck and Edward Jack, Esquires, had been commissioned by the Local Government...

American claims to be essentially democratic and to strictly maintain the doctrine that all men are equal...

When the Zulus rushed in on the small British detachment of Colonel Wood, and while there was yet an open road in one direction...

According to the calculation of Mr. G. T. C. Bartley, an ounce of bread wasted daily in each household in England and Wales is equal to 25,000,000 quarter loaves...

A Stirring Week.

The last week has been a very lively one, probably the most stirring we will have this season...

The first week in July is generally the commencement of the hottest spells of the summer, and it has certainly been so this year...

The Diocesan Synod of Fredericton met at half-past ten, on Wednesday morning, in the Madras School Room. A large number of clergymen and lay delegates were present...

FOREIGN MISSION MEETING.

On Monday evening the fifth Annual Mission Meeting of the Board of Foreign Missions for the Diocese of Fredericton, met in the Temperance Hall...

DOMINION DAY.

Tuesday was Dominion Day, and the city kept the day with a grand display of flags and illuminations...

The meeting of the Diocesan Church Society was opened in the Madras School room on Tuesday morning at ten. The reports of the Executive Committee...

THE RHODES ABDUCTION.

The Khedive of Egypt who has been for a long time struggling to withstand the pressure of England and France...

DIACONAL CHURCH SOCIETY.

The meeting of the Diocesan Church Society was opened in the Madras School room on Tuesday morning at ten. The reports of the Executive Committee...

A resolution moved by Mr. M. W. Jarvis at the evening meeting of the Synod, was carried after a spirited discussion...

C. T. A. UNION.

To come to matters more serious. On Monday evening delegates from the Societies in different parts of the Province in connection with the Catholic Total Abstinence Union of New Brunswick...

The Rival Kent Lines.

Last week we mentioned that Walter M. Beck and Edward Jack, Esquires, had been commissioned by the Local Government...

American claims to be essentially democratic and to strictly maintain the doctrine that all men are equal...

When the Zulus rushed in on the small British detachment of Colonel Wood, and while there was yet an open road in one direction...

According to the calculation of Mr. G. T. C. Bartley, an ounce of bread wasted daily in each household in England and Wales is equal to 25,000,000 quarter loaves...

The Zulu War.

News of the date of May 21st, has come from the Cape. The correspondent of the London Standard writes—

A strong impression prevails here that satisfactory terms might be made with the Zulus, were the authorities so inclined. The manner, however, in which Zulu messengers have been sent and imprisoned...

CHURCH OF ENGLAND SYNOD.

The Diocesan Synod of Fredericton met at half-past ten, on Wednesday morning, in the Madras School Room. A large number of clergymen and lay delegates were present...

The Report of the committee on Sunday Schools was read by Rev. Mr. Pentrich, Bishop of the Diocese, in connection with the Cathedral, submitted their report...

The Khedive of Egypt who has been for a long time struggling to withstand the pressure of England and France...

The meeting of the Diocesan Church Society was opened in the Madras School room on Tuesday morning at ten. The reports of the Executive Committee...

The Khedive of Egypt who has been for a long time struggling to withstand the pressure of England and France...

DIACONAL CHURCH SOCIETY.

The meeting of the Diocesan Church Society was opened in the Madras School room on Tuesday morning at ten. The reports of the Executive Committee...

THE RHODES ABDUCTION.

The Khedive of Egypt who has been for a long time struggling to withstand the pressure of England and France...

DIACONAL CHURCH SOCIETY.

The meeting of the Diocesan Church Society was opened in the Madras School room on Tuesday morning at ten. The reports of the Executive Committee...

C. T. A. UNION.

To come to matters more serious. On Monday evening delegates from the Societies in different parts of the Province in connection with the Catholic Total Abstinence Union of New Brunswick...

The Rival Kent Lines.

Last week we mentioned that Walter M. Beck and Edward Jack, Esquires, had been commissioned by the Local Government...

American claims to be essentially democratic and to strictly maintain the doctrine that all men are equal...

When the Zulus rushed in on the small British detachment of Colonel Wood, and while there was yet an open road in one direction...

According to the calculation of Mr. G. T. C. Bartley, an ounce of bread wasted daily in each household in England and Wales is equal to 25,000,000 quarter loaves...

Horrible Murder.

Last Saturday, we copied from the Toronto Mail some remarks on the homicidal wave which has been sweeping over this continent...

The City Council met on Wednesday evening. Alderman Beck was absent from the Board. Attention was called by the Mayor to the destruction of trees in the avenue...

The City Council.

The City Council met on Wednesday evening. Alderman Beck was absent from the Board. Attention was called by the Mayor to the destruction of trees in the avenue...

County Court House Market.

The County Council are determined to hold a free market in the County Court House, as heretofore, and refuse to acknowledge the authority of the City Council...

THE POTATO BUG.

The potato bug has made its appearance in several localities in the Province. In this vicinity we hear of it at Spring Hill and Musgrave...

STANLEY.

Mr. Spear tells us that the crops in Stanley are looking well. Although they were late in consequence of the cold weather...

THE BARNAR AND FANCY SALE.

The Barnar and Fancy Sale held by the Ladies of the Temperance Union in the Exhibition building on Thursday evening, was tastefully got up...

THE REFORM CLUB BAND.

The Reform Club Band will have a moonlight excursion on Tuesday evening next. A pleasant time may be expected by those who attend...

A BARN BELONGING TO MR. TITUS.

A barn belonging to Mr. Titus, Lower Gibson, was destroyed by fire early on Wednesday afternoon.

THE LAND IN IRELAND.

The land in Ireland is cultivated by 900,000 tenants, who occupy an average of thirty-two acres each...

FRANCIS NEWMAN.

Francis Newman, the brother of Cardinal Newman, who is a professed deist, seriously believes in a creed he has constructed for himself...

ASK YOURSELF THESE QUESTIONS.

Are you a dependent sufferer from Sick Headache, Habitual Constipation, Palpitation of the Heart? Have you Dizziness of the Head? Is your Nervous System depressed?

WOOD ON THE ALERT.

WOOD ON THE ALERT.—As Lord Chelmsford's role in the Zulu war was widely discussed...

EXPORTS OF BREADSTUFFS.

EXPORTS OF BREADSTUFFS.—The quantity of grain exported from this country to the United Kingdom from September 1st, 1877, to June 21st, 1878...

THE HORRORS OF WAR.

THE HORRORS OF WAR.—The horrors of war are nothing to the horrors of a plague. Immediate relief may be had by taking the head with Johnson's Army Linctament...

THE TERN "NON-COMMISSIONED" OFFICERS.

THE TERN "NON-COMMISSIONED" OFFICERS.—The terns, sergeants, and corporals are to be called "sub" officers.

Camp Mansell.

This forenoon, the four companies of the 71st Battalion, who have been called out for the six days' drill, went into camp...

THE POTATO BUG.

The potato bug has made its appearance in several localities in the Province. In this vicinity we hear of it at Spring Hill and Musgrave...

STANLEY.

Mr. Spear tells us that the crops in Stanley are looking well. Although they were late in consequence of the cold weather...

THE BARNAR AND FANCY SALE.

The Barnar and Fancy Sale held by the Ladies of the Temperance Union in the Exhibition building on Thursday evening, was tastefully got up...

THE REFORM CLUB BAND.

The Reform Club Band will have a moonlight excursion on Tuesday evening next. A pleasant time may be expected by those who attend...

A BARN BELONGING TO MR. TITUS.

A barn belonging to Mr. Titus, Lower Gibson, was destroyed by fire early on Wednesday afternoon.

THE LAND IN IRELAND.

The land in Ireland is cultivated by 900,000 tenants, who occupy an average of thirty-two acres each...

FRANCIS NEWMAN.

Francis Newman, the brother of Cardinal Newman, who is a professed deist, seriously believes in a creed he has constructed for himself...

ASK YOURSELF THESE QUESTIONS.

Are you a dependent sufferer from Sick Headache, Habitual Constipation, Palpitation of the Heart? Have you Dizziness of the Head? Is your Nervous System depressed?

WOOD ON THE ALERT.

WOOD ON THE ALERT.—As Lord Chelmsford's role in the Zulu war was widely discussed...

EXPORTS OF BREADSTUFFS.

EXPORTS OF BREADSTUFFS.—The quantity of grain exported from this country to the United Kingdom from September 1st, 1877, to June 21st, 1878...

THE HORRORS OF WAR.

THE HORRORS OF WAR.—The horrors of war are nothing to the horrors of a plague. Immediate relief may be had by taking the head with Johnson's Army Linctament...

THE TERN "NON-COMMISSIONED" OFFICERS.

THE TERN "NON-COMMISSIONED" OFFICERS.—The terns, sergeants, and corporals are to be called "sub" officers.

