

**CIHM
Microfiche
Series
(Monographs)**

**ICMH
Collection de
microfiches
(monographies)**



Canadian Institute for Historical Microreproductions / Institut canadien de microreproductions historiques

© 1997

Technical and Bibliographic Notes / Notes techniques et bibliographiques

The Institute has attempted to obtain the best original copy available for filming. Features of this copy which may be bibliographically unique, which may alter any of the images in the reproduction, or which may significantly change the usual method of filming are checked below.

- Coloured covers / Couverture de couleur
- Covers damaged / Couverture endommagée
- Covers restored and/or laminated / Couverture restaurée et/ou pelliculée
- Cover title missing / Le titre de couverture manque
- Coloured maps / Cartes géographiques en couleur
- Coloured ink (i.e. other than blue or black) / Encre de couleur (i.e. autre que bleue ou noire)
- Coloured plates and/or illustrations / Planches et/ou illustrations en couleur
- Bound with other material / Relié avec d'autres documents
- Only edition available / Seule édition disponible
- Tight binding may cause shadows or distortion along interior margin / La reliure serrée peut causer de l'ombre ou de la distorsion le long de la marge intérieure.
- Blank leaves added during restorations may appear within the text. Whenever possible, these have been omitted from filming / Il se peut que certaines pages blanches ajoutées lors d'une restauration apparaissent dans le texte, mais, lorsque cela était possible, ces pages n'ont pas été filmées.
- Additional comments / Commentaires supplémentaires:

L'Institut a microfilmé le meilleur exemplaire qu'il lui a été possible de se procurer. Les détails de cet exemplaire qui sont peut-être uniques du point de vue bibliographique, qui peuvent modifier une image reproduite, ou qui peuvent exiger une modification dans la méthode normale de filmage sont indiqués ci-dessous.

- Coloured pages / Pages de couleur
- Pages damaged / Pages endommagées
- Pages restored and/or laminated / Pages restaurées et/ou pelliculées
- Pages discoloured, stained or foxed / Pages décolorées, tachetées ou piquées
- Pages detached / Pages détachées
- Showthrough / Transparence
- Quality of print varies / Qualité inégale de l'impression
- Includes supplementary material / Comprend du matériel supplémentaire
- Pages wholly or partially obscured by errata slips, tissues, etc., have been refilmed to ensure the best possible image / Les pages totalement ou partiellement obscurcies par un feuillet d'errata, une pelure, etc., ont été filmées à nouveau de façon à obtenir la meilleure image possible.
- Opposing pages with varying colouration or discolourations are filmed twice to ensure the best possible image / Les pages s'opposant ayant des colorations variables ou des décolorations sont filmées deux fois afin d'obtenir la meilleure image possible.

This item is filmed at the reduction ratio checked below /
Ce document est filmé au taux de réduction indiqué ci-dessous.

10x																			
										✓									
	12x		16x		20x		24x		28x		32x								

The copy filmed here has been reproduced thanks to the generosity of:

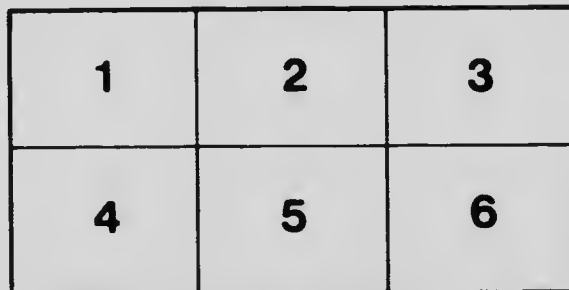
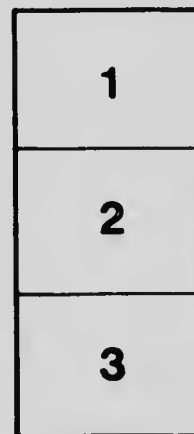
Vancouver Public Library

The images appearing here are the best quality possible considering the condition and legibility of the original copy and in keeping with the filming contract specifications.

Original copies in printed paper covers are filmed beginning with the front cover and ending on the last page with a printed or illustrated impression, or the back cover when appropriate. All other original copies are filmed beginning on the first page with a printed or illustrated impression, and ending on the last page with a printed or illustrated impression.

The last recorded frame on each microfiche shall contain the symbol → (meaning "CONTINUED"), or the symbol ∇ (meaning "END"), whichever applies.

Maps, plates, charts, etc., may be filmed at different reduction ratios. Those too large to be entirely included in one exposure are filmed beginning in the upper left hand corner, left to right and top to bottom, as many frames as required. The following diagrams illustrate the method:



L'exemplaire filmé fut reproduit grâce à la générosité de:

Vancouver Public Library

Les images suivantes ont été reproduites avec le plus grand soin, compte tenu de la condition et de la netteté de l'exemplaire filmé, et en conformité avec les conditions du contrat de filmage.

Les exemplaires originaux dont la couverture en papier est imprimée sont filmés en commençant par le premier plat et en terminant soit par la dernière page qui comporte une empreinte d'impression ou d'illustration, soit par le second plat, selon le cas. Tous les autres exemplaires originaux sont filmés en commençant par la première page qui comporte une empreinte d'impression ou d'illustration et en terminant par la dernière page qui comporte une telle empreinte.

Un des symboles suivants apparaîtra sur la dernière image de chaque microfiche, selon le cas: le symbole → signifie "A SUIVRE", le symbole ∇ signifie "FIN".

Les cartes, planches, tableaux, etc., peuvent être filmés à des taux de réduction différents. Lorsque le document est trop grand pour être reproduit en un seul cliché, il est filmé à partir de l'angle supérieur gauche, de gauche à droite, et de haut en bas, en prenant le nombre d'images nécessaire. Les diagrammes suivants illustrent la méthode.

MICROCOPY RESOLUTION TEST CHART

(ANSI and ISO TEST CHART No. 2)



APPLIED IMAGE Inc

1653 East Main Street
Rochester, New York 14609 USA
(716) 482 - 0300 - Phone
(716) 288 - 5989 - Fax

Crofton House

School for Girls

Vancouver, B. C.



Prospectus

1913

Tilke

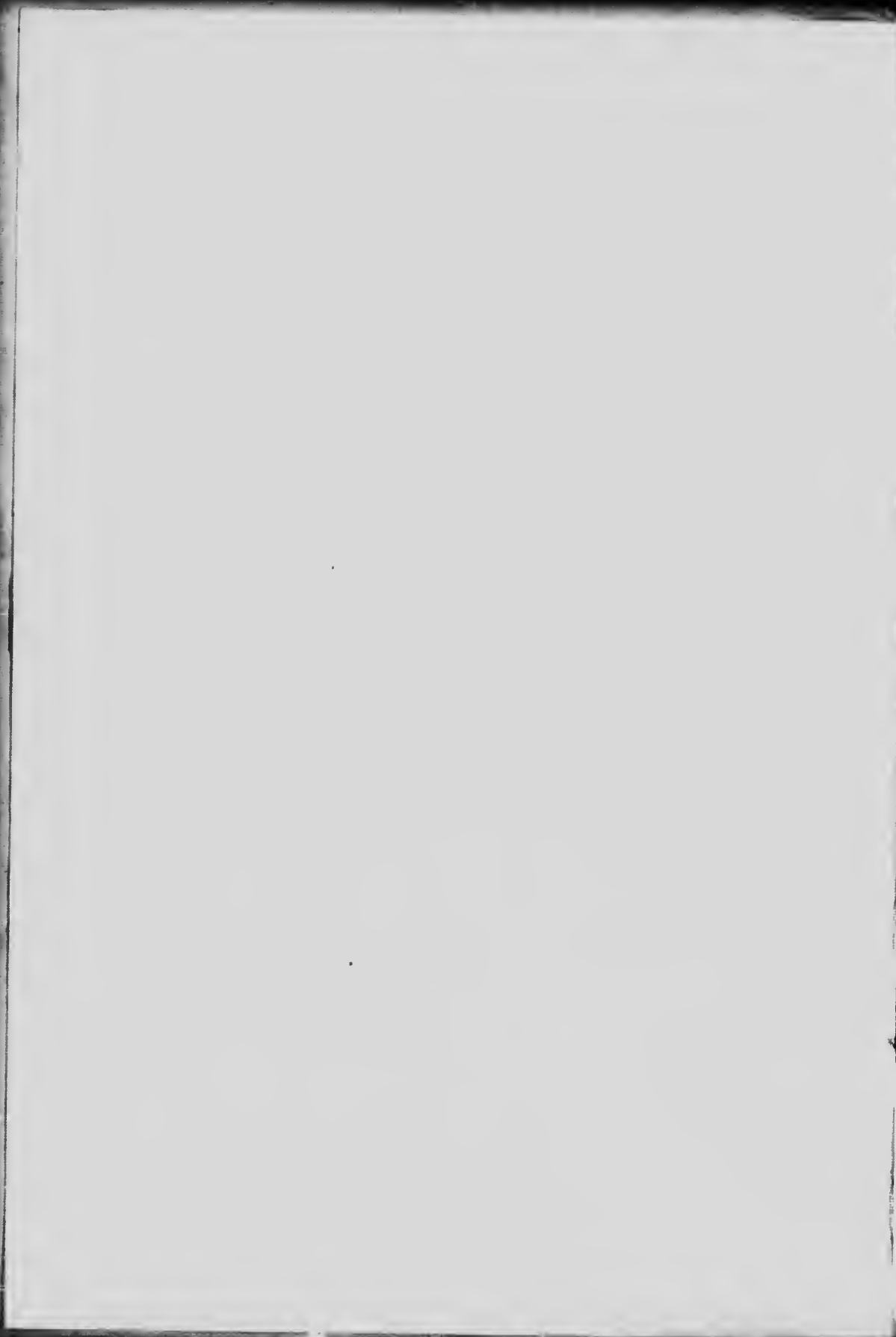
Crofton House
A Boarding and Day School
for Girls

VANCOUVER, BRITISH COLUMBIA

ESTABLISHED 1898

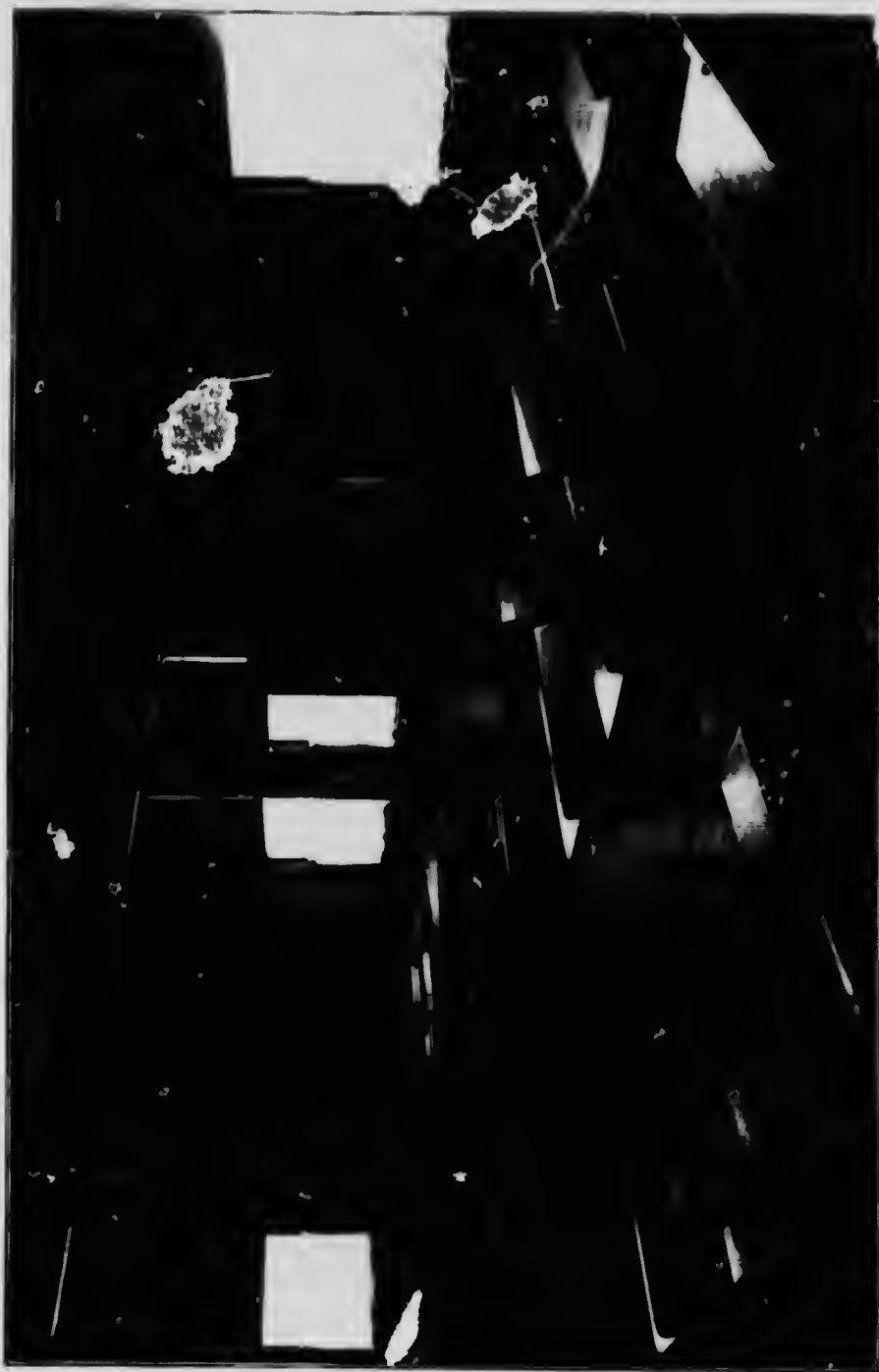


PRINCIPAL: MISS GORDON





RIDING SCHOOL



THIRD AND FOURTH FORM ROOMS

REFERENCES ARE KINDLY PERMITTED TO

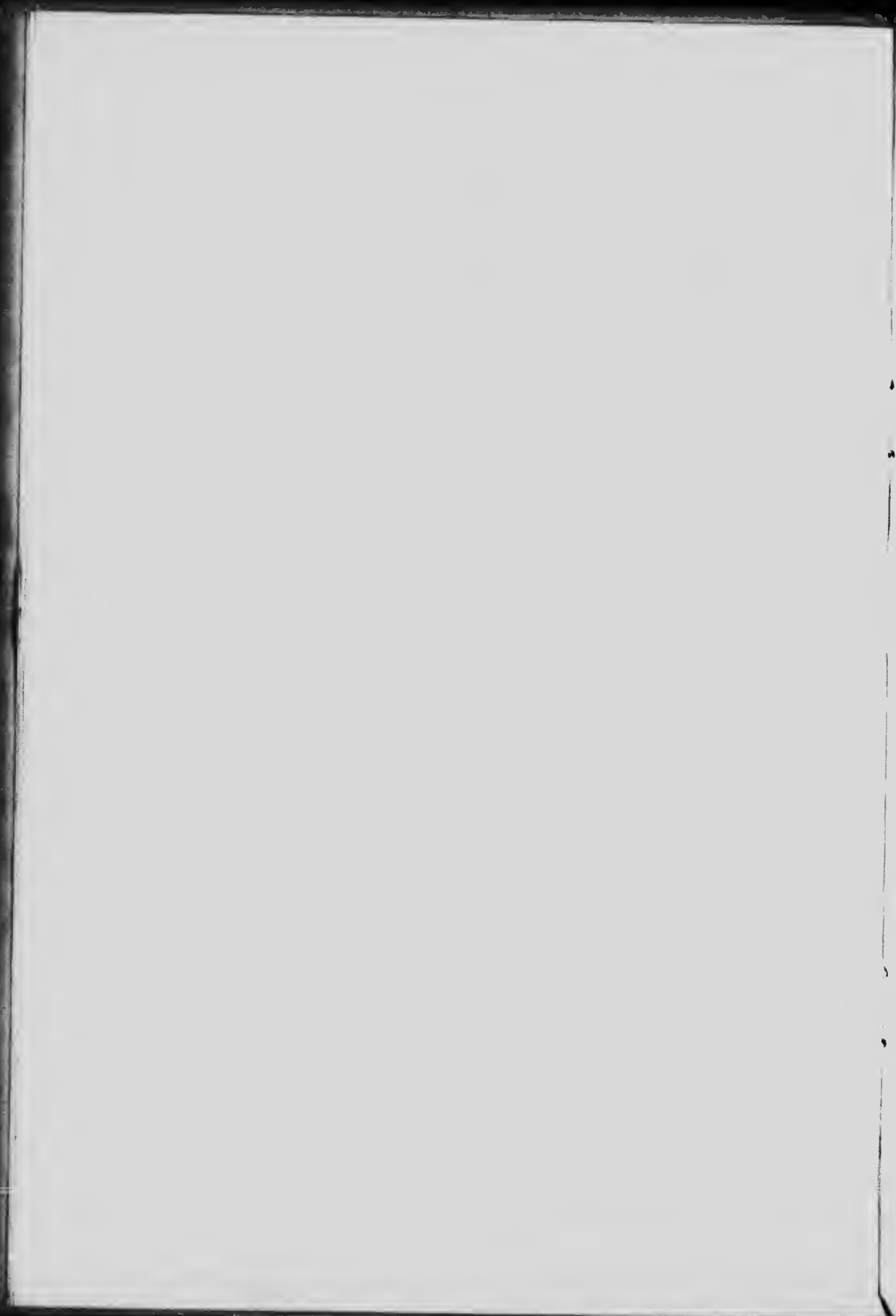
THE RIGHT REVEREND THE BISHOP OF NEW WESTMINSTER.
THE HON. SIR CHARLES HIBBERT TUPPER, K. C., K. C. M. G.
THE HON. HEWITT BOSTOCK, SENATOR OF THE DOMINION OF
CANADA.

THE REV. C. C. OWEN, B. A.

E. P. DAVIS, ESQ., K. C.

D. BELL-IRVING, ESQ., M. D.

D. H. WILSON, ESQ., M. D.



Resident Staff

MISS GORDON

Newnham College, Cambridge; Registered Teachers' Registration Council, London; Cambridge Higher Local Honours Certificate; First-Class Teacher's Certificate from the Education Department of the Province.

MISS M. GORDON

MISS HALLOWES

Cambridge Higher Local Honours Certificate; Cambridge Teacher's Certificate; Teacher's Certificate from the Education Department of the Province.

MISS PEELE

Registered Teachers' Registration Council, London.

MISS BROADBENT, M. A. (DUBLIN)

Newnham College, Cambridge; Cambridge University Tripos, Modern Languages; Intermediate London B. Sc. Examination.

MISS KING

Kindergarten Higher Certificate National Froebel Union.

MISS AMY ALLEN

Trained Norland Institute, London.

MISS IRENE VARLEY

Pupil of Professor Hambourg and Harold Bauer.

Non-Resident Staff

MISS DUKES

Intermediate London B. A. Examination; Baccalauréat Latin-Langues-Vivantes; Academic Certificate Educational Department of B. C.

MISS ALLEN

Kindergarten Higher Certificate, National Froebel Union; Drill Certificate British College of Physical Education.

PIANO—

HAGEN HOHLENBERG, B. A., Royal Conservatorium of Music, Dresden; Professor of McGill University Conservatorium, Montreal.

MISS EDITH PRATT, A. R. A. M., London (Mrs. Stuart); of the Conservatoire, Buda-Besth, and pupil of Josef Silvinski and Emile Kelsen.

MISS KENTISH-RANKIN, L. R. A. M., London.

MISS IDA WITHERS, A. R. C. M., London.

MISS MACDONALD, Pupil of Freda de Tersmeden; First-Class Certificate, Piano Teachers' Association, Winnipeg.

MISS WILKINSON

VIOLIN—

MISS VAUGHAN, Pupil of Hans Becker, Leipsic.

MISS LAWSON, Medallist Royal Academy of Music, London; Pupil of Emile Sauret; Student of Royal Conservatorium, Brussels.

SINGING—

DRAWING AND PAINTING—

MISS WAKE, Exhibitor Royal Academy, London.

MISS EAVES, Pupil of Professor Spatz, School of Art, Düsseldorf.

ELOCUTION—

MISS SWEPSTONE

DRILL—

MISS GODDARD

DANCING—

MISS SWEPSTONE, Certified Teacher Mrs. Wordsworth's School, London.

The School

The school, which was opened as a day school only in March, 1898, has increased since its removal in 1901 to the present buildings, till it numbers on its books about 175 girls. It stands in large grounds at the corner of Nelson and Jervis Streets in the highest and healthiest position in the West End of the city, commanding a beautiful view of English Bay and the mountains. It has large, gravelled play grounds and a tennis lawn.

The buildings themselves are divided into the senior and junior schools and are planned with a special regard to ventilation and sanitation. The rooms and corridors are large and lofty, and visitors are invariably impressed by their brightness and airiness.

The bedrooms are divided by curtains into cubicles, thus ensuring privacy, and on the top story of the main building is a large room which is available for drill, dancing, fencing, and for recreation.

Course of Instruction

PREPARATORY DEPARTMENT—Scripture, Reading, Writing, Spelling, Number, Brushwork, Modelling, Needlework, Singing, Games, Drill, use of Montessori Apparatus.

FORMS I. AND II.—Scripture, Reading, Writing, Arithmetic, Mythology, French, Geography, Grammar, History, Nature Study, Brushwork, Drawing, Plain Sewing, Drill, Morris Dancing, Singing.

FORMS III. AND IV.—Scripture, Reading, Writing, Spelling, Arithmetic, Grammar, English and Canadian History, Literature, Geography, Nature Study, Drawing and Brushwork, Singing, Drill, (in Form IV. German or Latin, Algebra, Geometry).

FORMS V. AND VI.—Scripture, McGill Matriculation Requirements in Literature, History, Languages, Mathematics and Science, Singing, Drill.

General Remarks

Religious knowledge forms part of the general course; classes in Scripture are held by the Rev. C. C. Owen, B. A., Rector of Christ Church. By their parents' desire girls are taken to Confirmation Classes. Candidates are prepared for the examinations of the Associated Board of the Royal Academy of Music and the Royal College of Music, London. The girls are expected to play before mistresses and girls at least once a term; besides this, social evenings are arranged, when they have opportunities to attain increased confidence in playing before an audience. Once a year parents are invited to an entertainment given entirely by the girls. Parents are urgently requested to second the efforts of the mistresses to enforce discipline and to promote a high standard of work, by not allowing any irregularity, except in case of sickness. Irregularity invariably involves loss of interest and lack of progress.

It has always been the aim of the staff to maintain a standard of proficiency and discipline which would compare favourably with that of the best schools in England and in Eastern Canada. The preservation of a healthy tone among the girls is an object of special solicitude.

Great attention is paid to manners and deportment as well as to general health. The girls are regularly drilled and taught gymnastics by a trained instructress.

Games are encouraged and supervised by a mistress. Basketball and Badminton are played during the winter months and tennis and Badminton during the summer. Riding is a very popular form of exercise. Lessons are given either in the Riding School or in the Park. The girls have had opportunities of acquiring skill in horsemanship by practising for gymkhanas, which have been much enjoyed by parents and friends.

The importance of games as a feature of school life is fully recognized. As the Province develops new opportunities offer for friendly competition with other schools, and training in true sportsmanlike spirit becomes possible. Morris dancing is taught in the lower school and is a source of unfailing interest and amusement.

Girls are not allowed to bring magazines into the school. There is a Fiction Library in both upper and lower schools. Girls may belong to it on payment of a fee of 25 cents a term, which is devoted to the purchase of new books.

Boarders are taken as often as possible to concerts, lectures, etc., and to the theatre to see suitable plays.

Routine

The school year is divided into three terms:

THE MICHAELMAS TERM, of about fifteen weeks, beginning the first week in September.

THE LENT TERM, of about ten weeks, beginning in the middle of January.

THE MIDSUMMER TERM, of about ten weeks, its beginning varying according to the date of Easter Day.

HOURS: 9.00 a. m. to 12.00; 1.30 p. m. to 3.30. Saturday is a holiday.

Rules and Regulations

1. Parents are requested to give notice immediately of the outbreak of any infectious disease in the family. Girls will be admitted after such an illness only by permission of the Medical Health Officer.

2. A note of excuse is required after any absence.

3. Lessons will be excused only when a written excuse is brought.
4. Girls are required to wear slippers during school hours.
5. All articles belonging to a girl are to be marked with her name.

For Boarders

1. Girls are allowed to visit friends approved of by their parents and the Principal, on Saturday only. They must be in charge of some responsible person during their entire absence from the school.
2. All eatables are to be handed in to a mistress and will be given out at suitable times.
3. All books borrowed or brought into the school by the girls are to be shown to the Principal.
4. All letters, except those to or from parents, are subject to inspection.
5. No commissions are to be executed by the day girls for the boarders.
6. Girls are expected to keep their clothes neat and in good repair. Part of Saturday morning is devoted to this purpose.

Requisites

FOR DAY GIRLS—Slippers, rubber shoes for drill, and a regulation gymnasium dress, of which particulars may be obtained at the school.

FOR BOARDERS—Umbrella, waterproof, rubbers, gymnasium suit (as per pattern) and rubber shoes.



DINING ROOM



CORRIDOR

Fees

(PAYABLE IN ADVANCE)

MICHAELMAS TERM

BOARD.....\$120.00

TUITION -

Forms VI, V and IV..... 35.00
Forms III and II..... 27.50
Form I, Preparatory..... 27.50

EXTRAS—

Piano.....from 16.00
Drawing....." 16.00
Violin....."

Singing....."

Dancing....."

Riding....."

LENT AND SUMMER TERMS

BOARD.....\$ 80.00

TUITION—

Forms VI, V and IV..... 25.00
Forms III and II..... 18.50
Form I, Preparatory..... 18.50

EXTRAS—

Piano.....from 10.00
Drawing....."

Laundry (15 pieces, not including dresses), per term.. 5.00

Use of Piano (for longer than 1½ hours daily) per term 2.00

Day Boarders, per month..... 5.00

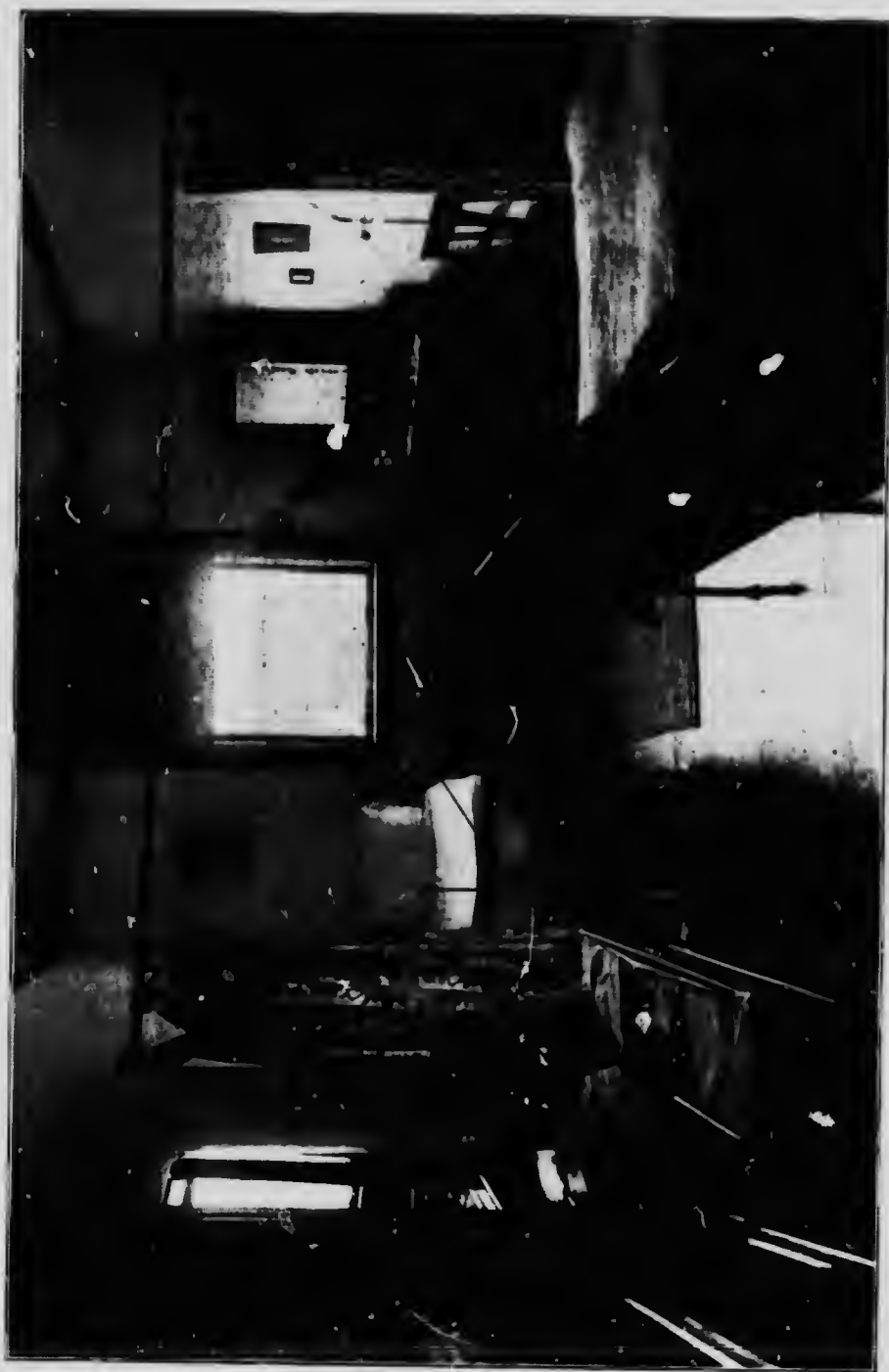
A reduction of 10 per cent. is made for two sisters.

An entrance fee of \$10.00 is charged for boarders, to provide plate and linen.

ALL FEES ARE PAYABLE IN ADVANCE. No reduction is made for illness of less than a month, and then only for serious and prolonged illness, when the loss is equally shared by the parents and the school.

A MONTH'S NOTICE IS REQUIRED OF THE REMOVAL OF A PUPIL; IN DEFAULT OF THIS, A MONTH'S FEES WILL BE CHARGED.

Girls living at a distance may dine regularly at the school and during bad weather may remain to dinner, if notice of this intention be given when they arrive in the morning. By special arrangement day girls may join the boarders in their walks, and may remain for preparation under supervision.



BEDROOM





Feans & Hastings Limited
Printers

