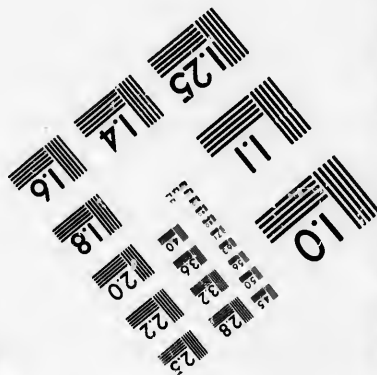
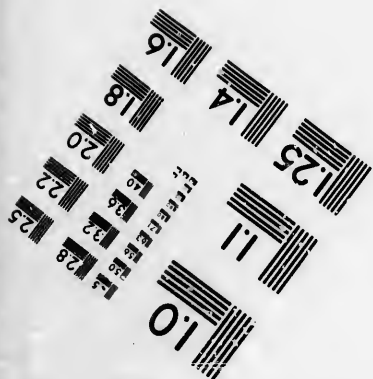
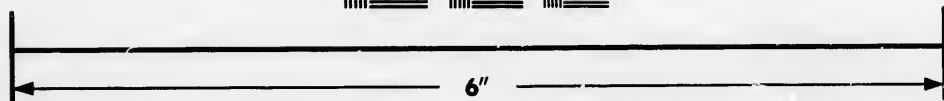
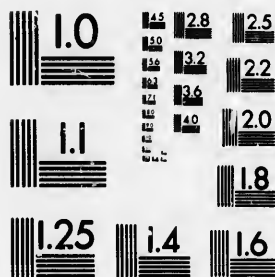


**IMAGE EVALUATION
TEST TARGET (MT-3)**



**Photographic
Sciences
Corporation**

23 WEST MAIN STREET
WEBSTER, N.Y. 14580
(716) 872-4503

**CIHM/ICMH
Microfiche
Series.**

**CIHM/ICMH
Collection de
microfiches.**



Canadian Institute for Historical Microreproductions / Institut canadien de microreproductions historiques

© 1985

Technical and Bibliographic Notes/Notes techniques et bibliographiques

The Institute has attempted to obtain the best original copy available for filming. Features of this copy which may be bibliographically unique, which may alter any of the images in the reproduction, or which may significantly change the usual method of filming, are checked below.

L'Institut a microfilmé le meilleur exemplaire qu'il lui a été possible de se procurer. Les détails de cet exemplaire qui sont peut-être uniques du point de vue bibliographique, qui peuvent modifier une image reproduite, ou qui peuvent exiger une modification dans la méthode normale de filmage sont indiqués ci-dessous.

- Coloured covers/
Couverture de couleur
- Covers damaged/
Couverture endommagée
- Covers restored and/or laminated/
Couverture restaurée et/ou pelliculée
- Cover title missing/
Le titre de couverture manqué
- Coloured maps/
Cartes géographiques en couleur
- Coloured ink (i.e. other than blue or black)/
Encre de couleur (i.e. autre que bleue ou noire)
- Coloured plates and/or illustrations/
Planches et/ou illustrations en couleur
- Bound with other material/
Relié avec d'autres documents
- Tight binding may cause shadows or distortion
along interior margin/
La reliure serrée peut causer de l'ombre ou de la
distorsion le long de la marge intérieure
- Blank leaves added during restoration may
appear within the text. Whenever possible, these
have been omitted from filming/
Il se peut que certaines pages blanches ajoutées
lors d'une restauration apparaissent dans le texte,
mais, lorsque cela était possible, ces pages n'ont
pas été filmées.
- Additional comments:/
Commentaires supplémentaires:

- Coloured pages/
Pages de couleur
- Pages damaged/
Pages endommagées
- Pages restored and/or laminated/
Pages restaurées et/ou pelliculées
- Pages discoloured, stained or foxed/
Pages décolorées, tachetées ou piquées
- Pages detached/
Pages détachées
- Showthrough/
Transparence
- Quality of print varies/
Qualité inégale de l'impression
- Includes supplementary material/
Comprend du matériel supplémentaire
- Only edition available/
Seule édition disponible
- Pages wholly or partially obscured by errata
slips, tissues, etc., have been refilmed to
ensure the best possible image/
Les pages totalement ou partiellement
obscurcies par un feuillet d'errata, une pelure,
etc., ont été filmées à nouveau de façon à
obtenir la meilleure image possible.

This item is filmed at the reduction ratio checked below/
Ce document est filmé au taux de réduction indiqué ci-dessous.

10X	12X	14X	16X	18X	20X	22X	24X	26X	28X	30X	32X
<input type="checkbox"/>	<input type="checkbox"/>	<input type="checkbox"/>	<input type="checkbox"/>	<input type="checkbox"/>	<input type="checkbox"/>	<input type="checkbox"/>	<input type="checkbox"/>	<input type="checkbox"/>	<input type="checkbox"/>	<input type="checkbox"/>	<input checked="" type="checkbox"/>

The copy filmed here has been reproduced thanks to the generosity of:

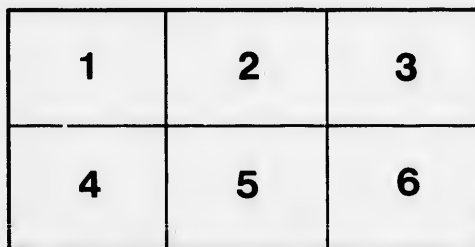
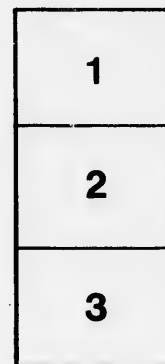
National Library of Canada

The images appearing here are the best quality possible considering the condition and legibility of the original copy and in keeping with the filming contract specifications.

Original copies in printed paper covers are filmed beginning with the front cover and ending on the last page with a printed or illustrated impression, or the back cover when appropriate. All other original copies are filmed beginning on the first page with a printed or illustrated impression, and ending on the last page with a printed or illustrated impression.

The last recorded frame on each microfiche shall contain the symbol \rightarrow (meaning "CONTINUED"), or the symbol ∇ (meaning "END"), whichever applies.

Maps, plates, charts, etc., may be filmed at different reduction ratios. Those too large to be entirely included in one exposure are filmed beginning in the upper left hand corner, left to right and top to bottom, as many frames as required. The following diagrams illustrate the method:



L'exemplaire filmé fut reproduit grâce à la générosité de:

Bibliothèque nationale du Canada

Les images suivantes ont été reproduites avec le plus grand soin, compte tenu de la condition et de la netteté de l'exemplaire filmé, et en conformité avec les conditions du contrat de filmage.

Les exemplaires originaux dont la couverture en papier est imprimée sont filmés en commençant par le premier plat et en terminant soit par la dernière page qui comporte une empreinte d'impression ou d'illustration, soit par le second plat, selon le cas. Tous les autres exemplaires originaux sont filmés en commençant par la première page qui comporte une empreinte d'impression ou d'illustration et en terminant par la dernière page qui comporte une telle empreinte.

Un des symboles suivants apparaîtra sur la dernière image de chaque microfiche, selon le cas: le symbole \rightarrow signifie "A SUIVRE", le symbole ∇ signifie "FIN".

Les cartes, planches, tableaux, etc., peuvent être filmés à des taux de réduction différents. Lorsque le document est trop grand pour être reproduit en un seul cliché, il est filmé à partir de l'angle supérieur gauche, de gauche à droite, et de haut en bas, en prenant le nombre d'images nécessaire. Les diagrammes suivants illustrent la méthode.

ails
du
odifier
une
image

rrata
o

pelure,
n à

✓
32X

LETTER

FROM

THE SECRETARY

Transmitting, pursuant to a resolution of the House of

A COPY OF THE MAP

OF THE

COMMISSIONERS UNDER THE

FOR ASCERTAINING

NORTHERN AND NORTHWESTERN

BETWEEN

THE UNITED STATES AND

MARCH 18,

Read, and laid upon

WASHINGTON

PRINTED BY GALES & BENTLEY

1828.

LETTER

FROM

SECRETARY OF STATE,

Resolution of the House of Representatives, of the nineteenth ultimo;

THE MAPS AND REPORT

OF THE

UNDER THE TREATY OF GHENT,

FOR ASCERTAINING THE

AND NORTHWESTERN BOUNDARY

BETWEEN

UNITED STATES AND GREAT BRITAIN.

MARCH 18, 1828.

Read, and laid upon the table.

WASHINGTON:

PRINTED BY GALES & SEATON.

1828.





DEPARTMENT OF STATE,

Washington, March 15, 1828.

The Secretary of State, in pursuance of a resolution of the House of Representatives, of the 19th ultimo, directing him to report to that House a copy of the Maps, and so much of the Reports of the Commissioners under the Treaty of Ghent, for ascertaining the Northern and Northwestern Boundary between the United States and Great Britain, as will exhibit those parts of said boundary which are already decided upon, has the honor to report the accompanying copies of a part of a series of Maps which have been communicated to this office, exhibiting Surveys and Delineations of so much of said Boundary line as is believed to be required by the resolution of the House; and respectfully to refer the House to the Decision, dated 18th June, 1822, of the Joint Commissioners under the sixth article of the said treaty, published at the end of the Acts of the second Session of the Seventeenth Congress, in the seventh volume of the Laws of the United States, for a further and full explanation of the said Boundary Line, as agreed upon and established.

Respectfully submitted.

H. CLAY.

DECISION OF THE COMMISSIONERS

Under the Sixth Article of the Treaty of Ghent, done at Ulica, in the State of New York, 18th June, 1822.

The undersigned Commissioners, appointed, sworn, and authorized, in virtue of the sixth article of the Treaty of Peace and Amity between His Britannic Majesty and the United States of America, concluded at Ghent, on the 24th of December, 1814, impartially to examine, and, by a report or declaration, under their hands and seals, to designate, "that portion of the boundary of the United States from the point where the 45th degree of north latitude strikes the river Iroquois, or Cataract, along the middle of said river into Lake Ontario, through the middle of said lake, until it strikes the communication, by water, between that lake and Lake Erie; thence, along the middle of said communication, into Lake Erie, through the middle of said lake, until it arrives at the water communication into Lake Huron; thence, through the middle of said water communication, into Lake Huron; thence, through the middle of said lake, to the water communication between that lake and Lake Superior;" and to "decide to which of the two contracting parties the several islands lying within the said rivers, lakes, and water communications, do respectively belong, in conformity with the true intent of the treaty of 1783;" do decide and declare, that the following described line (which is more clearly indicated on a series of maps accompanying this report, exhibiting correct surveys and delineations of all the rivers, lakes, water communications, and islands, embraced by the sixth article of the treaty of Ghent, by a black line, shaded on the British side with red, and on the American side with blue; and each sheet of which series of maps is identified by a certificate, subscribed by the Commissioners, and by the two principal surveyors employed by them,) is the true boundary intended by the two beforementioned treaties; that is to say:

Beginning at a stone monument, erected by Andrew Ellicot, Esquire, in the year 1817, on the south bank, or shore, of the said river Iroquois, or Cataract, (now called the St. Lawrence,) which monument bears south, 74° 45' west, and is eighteen hundred and forty yards distant from the stone church in the Indian village of St. Regis, and indicates the point at which the 45th parallel of north latitude strikes the said river; thence, running north 35° 45' west, into the river, on a line at right angles with the southern shore, to a point one hundred yards south of the opposite island, called Cornwall Island; thence, turning westerly, and passing around the southern and western sides of said island, keeping one hundred yards distant therefrom, and following the curvatures of its shores, to a point opposite to the northwest corner, or angle, of said island; thence, to and along the middle of the main river, until it approaches the eastern extremity of Barnhart's Island; thence, northerly, along the channel which divides the last mentioned island from the Canada shore, keeping one hundred yards distant from the island, until it approaches Sheik's Island; thence, along the middle of the strait which divides Barnhart's and Sheik's Islands, to the channel called the Long Sault, which separates the two last mentioned islands from the Lower Long Sault Island; thence, westerly, (crossing the centre of the last mentioned channel,) until it approaches within one hundred yards of the north shore of the Lower Sault Island; thence, up the north branch of the river, keeping to the north of, and near, the Lower Sault Island, and also north of, and near, the Upper Sault (sometimes called Baxter's) Island, and south of the two small islands marked on the map A and B, to the western extremity of the Upper Sault, or Baxter's Island; thence, passing between the two islands called the Cats, to the middle of the river above; thence, along the middle of the river, keeping to the north of the small islands marked C and D; and north also of Chrysler's island, and of the small island next above it, marked E, until it approaches the northeast angle of Goose Neck Island; thence, along the passage which divides the last mentioned island from the Canada shore, keeping one hundred yards from the island, to the upper end

of the same; thence, the island marked F, marked G and H, to the said island, keeping one hundred yards from the south, and keeping north of, and also of Tick, Tibbit, and also of Duck, D No. 14, south of 15 a thence, along the middle and No. 39, 44, and 47, and 48, until it reaches a strait which divides 61, and in the south the northeast point of of the small islands, and 71, until it approaches and of the two small or Long Island, keeping one hundred yards from the southwest Fox, Stony, and the to the middle of the the Niagara river; to the point of the Horn head, and following the middle of said strait, over Islands, and to the middle of the easternmost of the easternmost of the islands called the mouth of the Detroit up the said channel, approaches Fighting Island, to the middle east of, and near, H thence, through the is usually denominated the southeast, and opposite to Point to the west of, and through the middle of the west, and the two last mentioned Drummond's Island American shore, of those numbered

Thence, up the and east of Isle is those numbered 2 of the point of Inter Island, and at the run by the sixth article. And the said water communication and each of them water communication, do, and each the second article

1828.

with ultimate, di-
visioners under
ed States and
onor to report
xhibiting Sur-
olution of the
missioners un-
e Seventeenth
ion of the said

CLAY.

June, 1822.

le of the Treaty
d at Ghent, on
ands and seals,
egree of north
rio, through the
Erie; thence,
t arrives at the
ion, into Lake
and Lake Supe-
the said rivers,
reaty of 1783;"
ies of maps ac-
cter communica-
d on the British
ntified by a cer-
nom.) is the true

the south bank,
ent bears south,
n village of St.
thence, running
hundred yards
and the southern
curvatures of its
the middle of the
along the chan-
distant from the
Barnhart's and
islands from the
nel,) until it ap-
north branch of
near, the Upper
map A and B, to
wo islands called
the north of the
t above it, mark-
ge which divides
to the upper end

of the same; thence, south of, and near, the two small islands called the Nut Islands; thence, north of, and near, the island marked F, and also of the island called Dry or Smuggler's Island; thence, passing between the islands marked G and H, to the north of the island called Isle au Rapid Platt; thence, along the north side of the last mentioned island, keeping one hundred yards from the shore, in the upper end thereof; thence, along the middle of the river, keeping to the south of, and near, the islands called Cousson (or Tusain) and Presque Isle; thence, up the river, keeping north of, and near, the several Gallop Isles, numbered on the map 1, 2, 3, 4, 5, 6, 7, 8, 9, and 10, and also of Tick, Tibblit's, and Chimney Islands; and south of, and near, the Gallop Isles, numbered 11, 12, and 13, and also of Duck, Drummond, and Sheep Islands; thence, along the middle of the river, passing north of Island No. 14, south of 15 and 16, north of 17; south of 18, 19, 20, 21, 22, 23, 24, 25, and 26, and north of 26 and 27; thence, along the middle of the river, north of Gull Island, and of the islands No. 29, 32, 33, 34, 35, Bluff Island, and No. 39, 44, and 45, and to the south of No. 30, 31, 36, Grenadier Island, and No. 37, 38, 40, 41, 42, 43, 46, 47, and 48, until it approaches the east end of Well's Island; thence, to the north of Well's Island, and along the strait which divides it from Rowe's Island, keeping to the north of the small islands No. 51, 52, 54, 58, 59, and 61, and to the south of the small islands numbered and marked 49, 50, 53, 55, 57, 60, and X, until it approaches the northeast point of Grindstone Island; thence, to the north of Grindstone Island, and keeping to the north also of the small islands, No. 63, 65, 67, 68, 70, 72, 73, 74, 75, 76, 77, and 78, and to the south of No. 62, 64, 66, 69, and 71, until it approaches the southern point of Hickory Island; thence, passing to the south of Hickory Island, and of the two small islands lying near its southern extremity, numbered 79 and 80; thence, to the south of Grand or Long Island, keeping near its southern shore, and passing to the north of Carlton Island, until it arrives opposite to the southwestern point of said Grand Island in Lake Ontario; thence, passing to the north of Grenadier, Fox, Stony, and the Gallop Islands in Lake Ontario, and to the south of, and near, the islands called the Ducks, to the middle of the said lake; thence, westerly, along the middle of said lake, to a point opposite the mouth of the Niagara river; thence, to and up the middle of the said river, to the Great Falls; thence, up the Falls, through the point of the Horse Shoe, keeping to the west of Iris or Goat Island, and of the group of small islands at its head, and following the bends of the river so as to enter the strait between Navy and Grand Islands; thence, along the middle of said strait, to the head of Navy Island; thence, to the west and south of, and near to, Grand and Beaver Islands, and to the west of Strawberry, Squaw, and Bird Islands, to Lake Erie; thence, southerly and westerly, along the middle of Lake Erie, in a direction to enter the passage immediately south of Middle Island, being one of the easternmost of the group of islands lying in the western part of said lake; thence, along the said passage, proceeding to the north of Cunningham's Island, of the three Bass Islands, and of the Western Sister, and to the south of the islands called the Hen and Chickens, and of the Eastern and Middle Sisters; thence, to the middle of the mouth of the Detroit river, in a direction to enter the channel which divides Bois-blanc and Sugar Islands; thence, up the said channel, to the west of Bois-blanc Island, and to the east of Sugar, Fox, and Stony Islands, until it approaches Fighting or Great Turkey Island; thence, along the western side, and near the shore of said last mentioned island, to the middle of the river above the same; thence, along the middle of said river, keeping to the south-east of, and near, Hug Island, and to the northwest of, and near, the island called Isle a la Pêche, to Lake St. Clair; thence, through the middle of said lake, in a direction to enter that mouth or channel of the river St. Clair which is usually denominated the Old Ship Channel; thence, along the middle of said channel, between Squirrel Island on the southeast, and Herson's Island on the northwest, to the upper end of the last mentioned island, which is nearly opposite to Point au Chenes, on the American shore; thence, along the middle of the river St. Clair, keeping to the west of, and near, the islands called Belle Riviere Isle, and the Isle aux Cerfs, to Lake Huron; thence, through the middle of Lake Huron, in a direction to enter the strait or passage between Drummond's Island on the west, and the little Manitou Island on the east; thence, through the middle of the passage which divides the two last mentioned islands; thence, turning northerly and westerly, around the eastern and northern shores of Drummond's Island, and proceeding in a direction to enter the passage between the Island of St. Joseph's and the American shore, passing to the north of the intermediate islands No. 61, 11, 10, 12, 9, 6, 4, and 2, and to the south of those numbered 15, 13, 5, and 1.

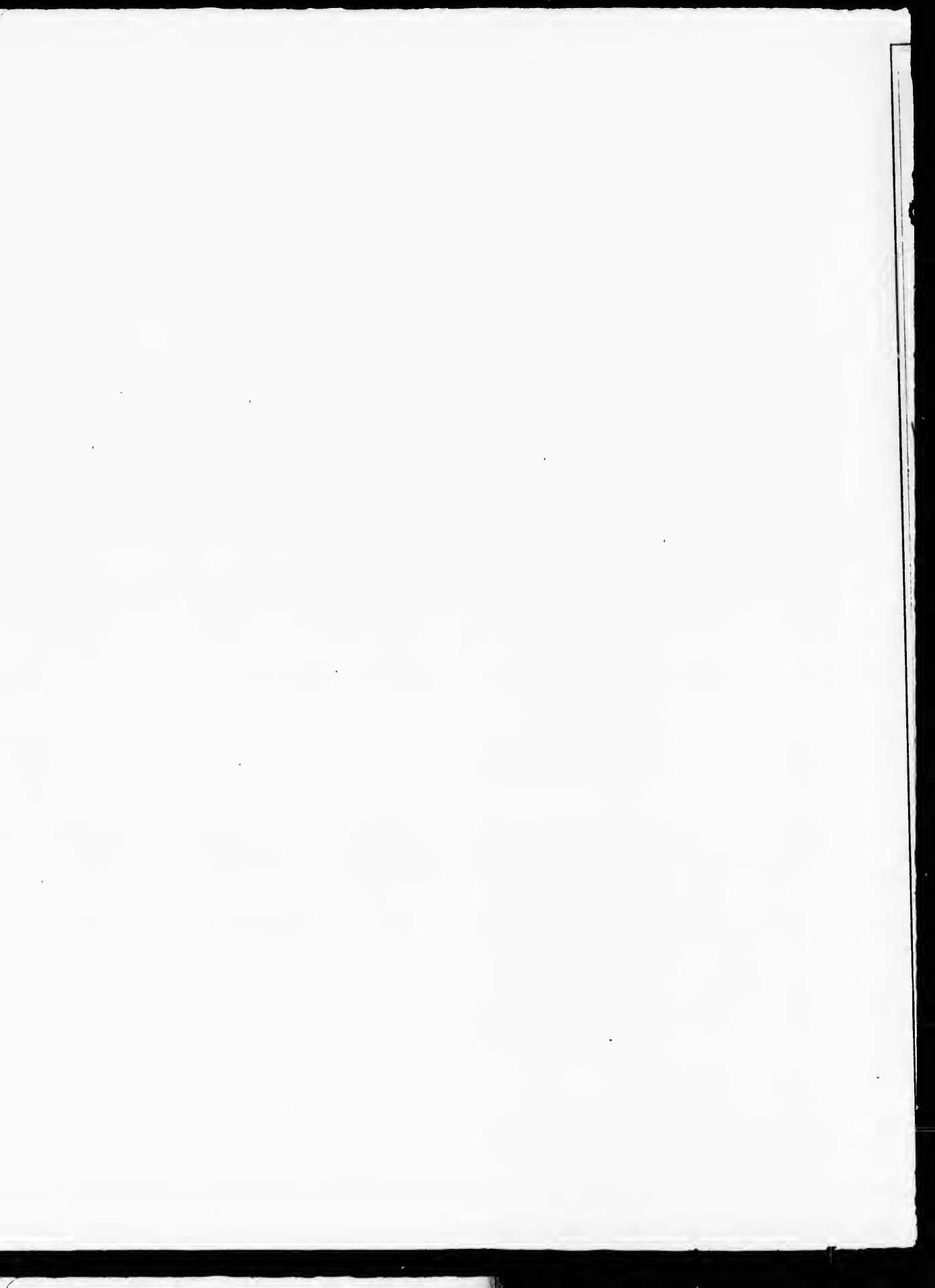
Thence, up the said last mentioned passage, keeping near to the island St. Joseph's, and passing to the north and east of Isle a la Crosse, and of the small islands numbered 16, 17, 18, 19, and 20, and to the south and west of those numbered 21, 22, and 23, until it strikes a line (drawn on the map with black ink, and shaded on one side of the point of intersection with blue, and on the other with red) passing across the river at the head of St. Joseph's Island, and at the foot of the Neebish Rapids, which line denotes the determination of the boundary directed to be run by the sixth article of the Treaty of Ghent.

And the said Commissioners do further decide and declare, that all the islands lying in the rivers, lakes, and water communications, between the before described boundary line and the adjacent shores of Upper Canada, do, and each of them does, belong to his Britannic Majesty; and that all the islands lying in the rivers, lakes, and water communications, between the said boundary line and the adjacent shores of the United States, or their Territories, do, and each of them does, belong to the United States of America, in conformity with the true intent of the second article of the said treaty of 1783, and of the sixth article of the Treaty of Ghent.

In faith whereof, we, the Commissioners aforesaid, have signed this declaration, and thereunto affixed our seals.

Done, in quadruplicate, at Utica, in the State of New York, in the United States of America, this eighteenth day of June, in the year of our Lord one thousand eight hundred and twenty-two.

PETER B. PORTER, [L. S.]
ANTH. BARCLAY, [L. S.]



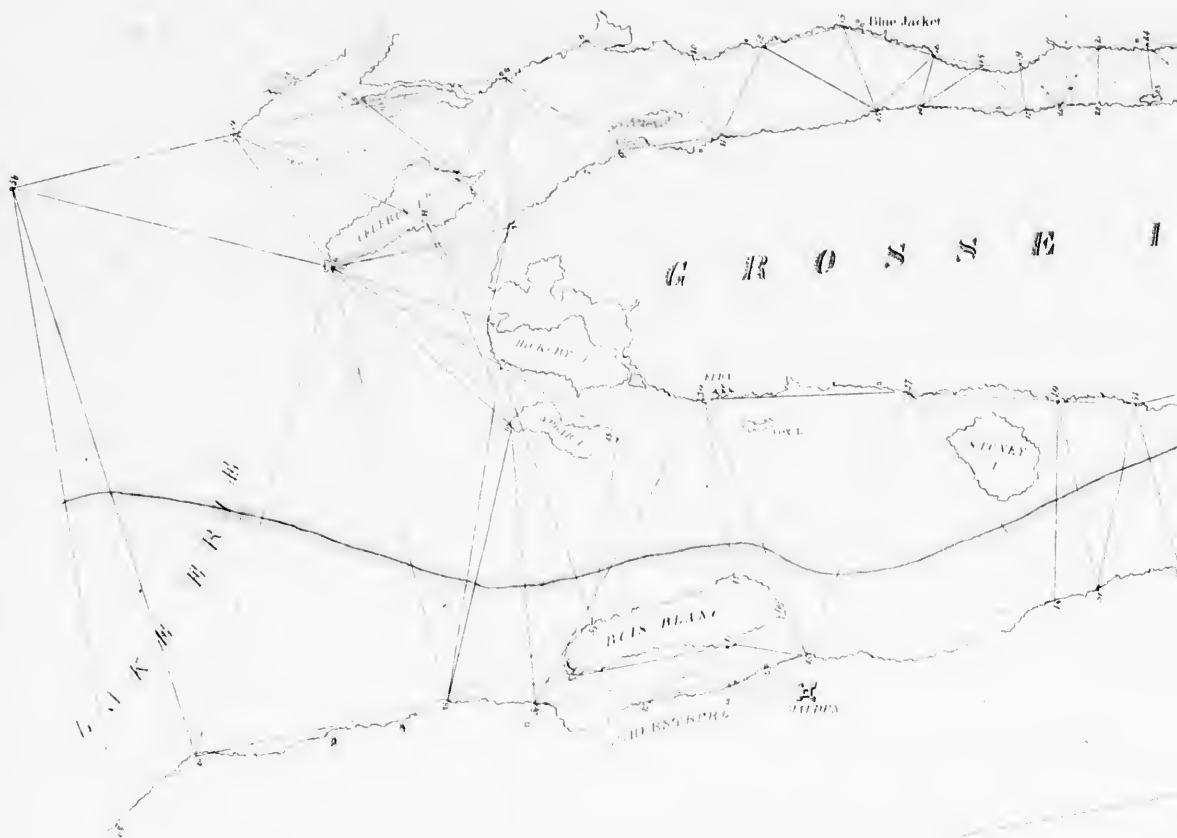


Hand-drawn map of Tank Bay, part of the Botanical Expedition to the North Pole, with a sketch of the actual survey by the Board.

PETER H. PORTER
 ANTH. BARCLAY
 WILLIAM A. BIRD
 DAVID THOMPSON

1000 FT. DEEP
 500 FT. DEEP
 200 FT. DEEP
 100 FT. DEEP
 50 FT. DEEP
 25 FT. DEEP
 10 FT. DEEP
 5 FT. DEEP
 2 FT. DEEP
 1 FT. DEEP
 0 FT. DEEP
 1000 FT. DEEP
 500 FT. DEEP
 200 FT. DEEP
 100 FT. DEEP
 50 FT. DEEP
 25 FT. DEEP
 10 FT. DEEP
 5 FT. DEEP
 2 FT. DEEP
 1 FT. DEEP
 0 FT. DEEP





— No. 1 —

— G R O S J E A N —

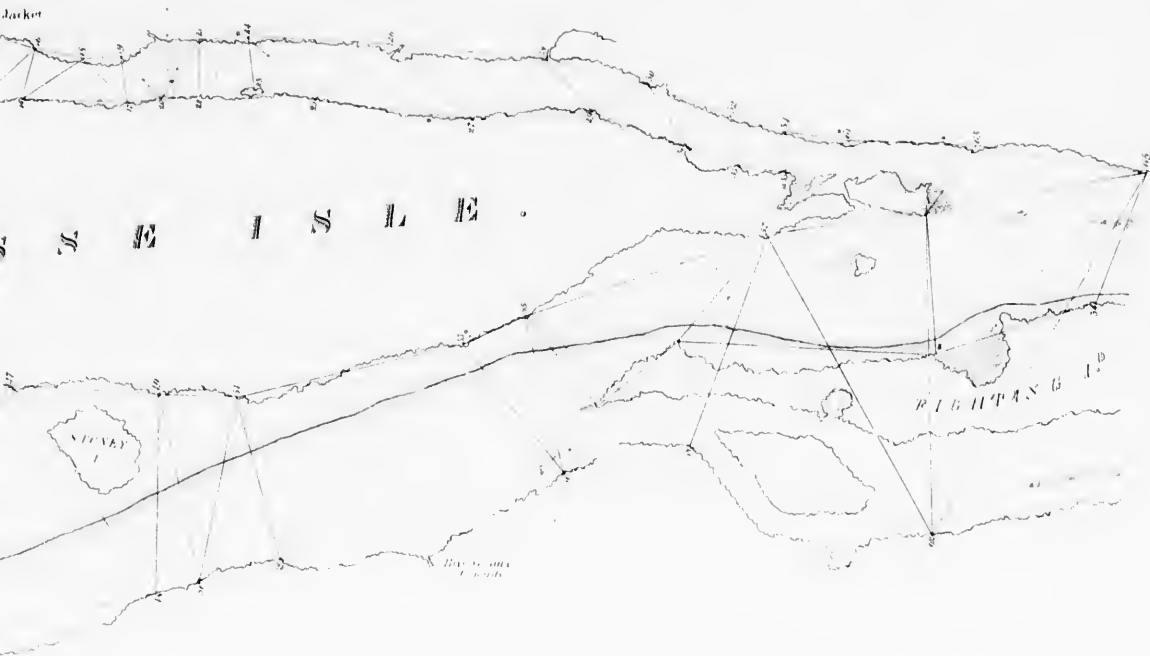
— 1820. —

Scale of the original Map 1/25000 feet



Scale of the Engraving 1/10000 feet



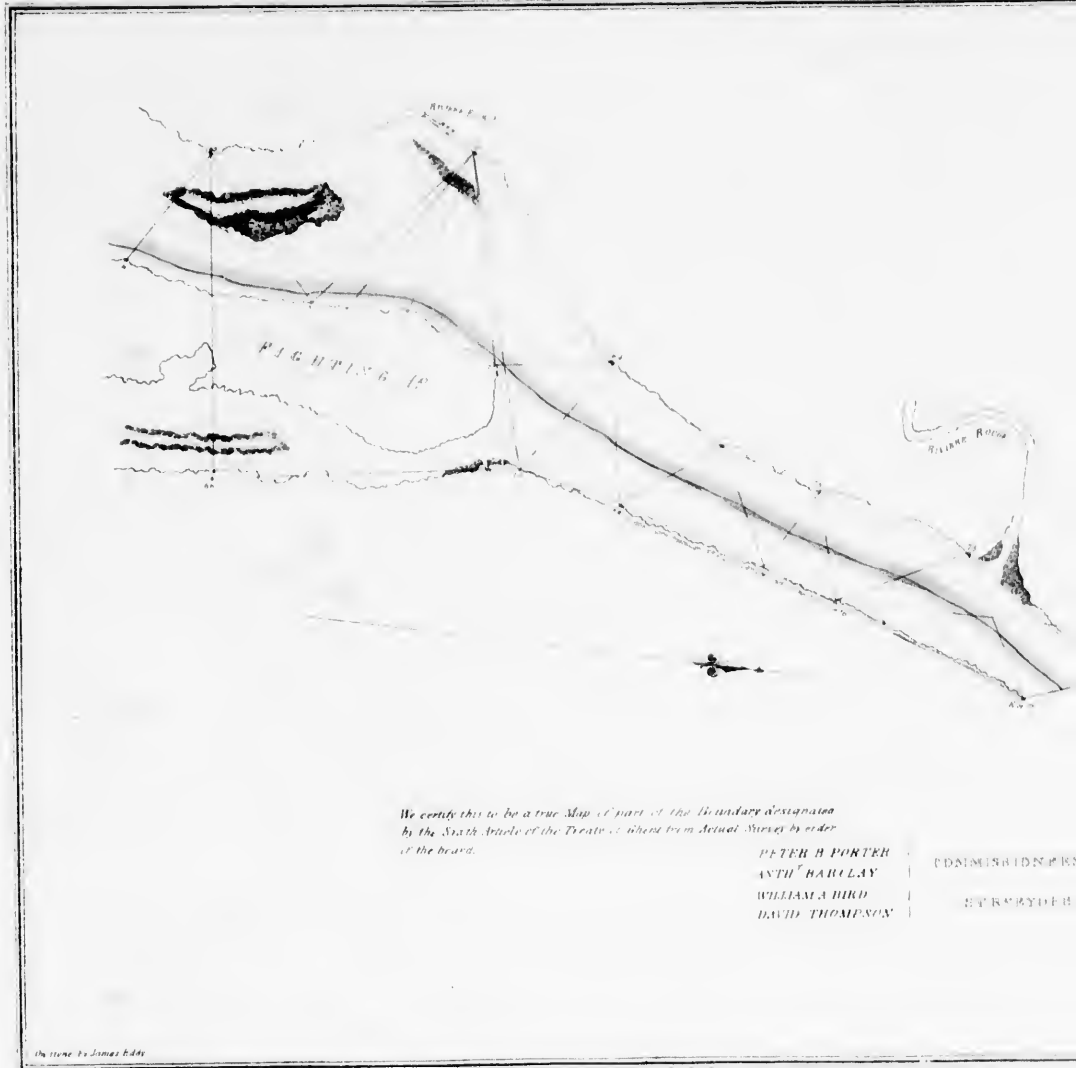


No. 1—
 33 0 3 3 —
 62 0. —

We return this to a true Map of part of the Boundary described by the
 North Branch of the Treaty of 1763 from actual Surveys by order of the Board

PETER B. POOTER	GEOGRAPHICAL	NOON THE 6. 4.
WILLIAM BARCLAY		
WILLIAM A. BERRY	MATH. & C.	THE 15. 40. 30
WILLIAM B. BENTLEY		





We certify this to be a true Map of part of the Boundary designated by the Sixth Article of the Treaty of 1819 from Actual Survey by order of the board.

PETER H PORTER
 ANTHONY HADLAY
 WILLIAM A HIRD
 DAVID THOMSON

COMMISSIONERS
 OF THE GULF

Drawn by James Eddy

No. 2.

DETROIT.

1830.

Scale of 1 French Linear Mile of 6756 feet



Scale of 1 English Mile of 5280 feet





London
order

H. B. PORTER
BARCLAY
W. A. HIRD
THOMPSON

EDINBURGH: PRINTED BY
H. B. PORTER

1830
1831
1832

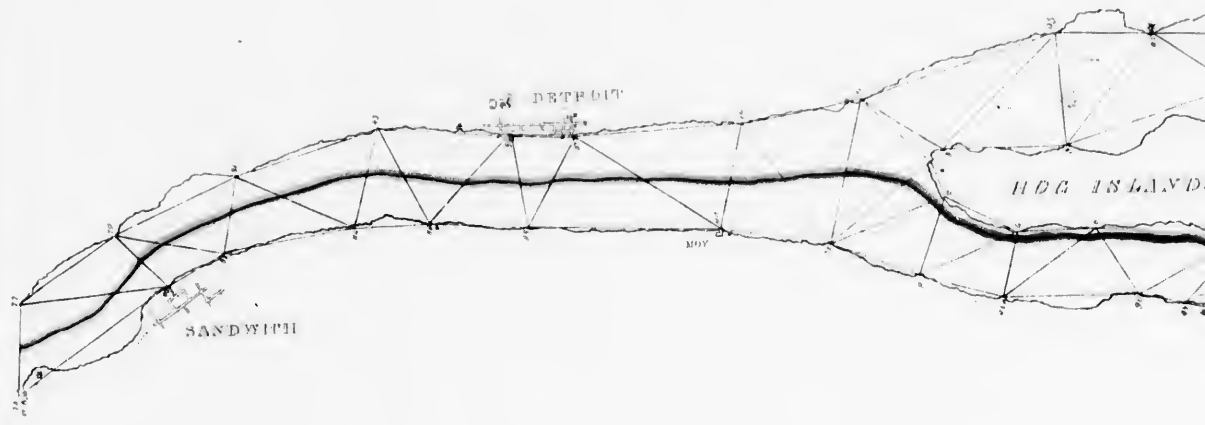
Printed by G. B. Ross



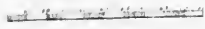
- No. 5 -

DETROIT

1820.



Scale of 1 English Mile or 3219.6 feet



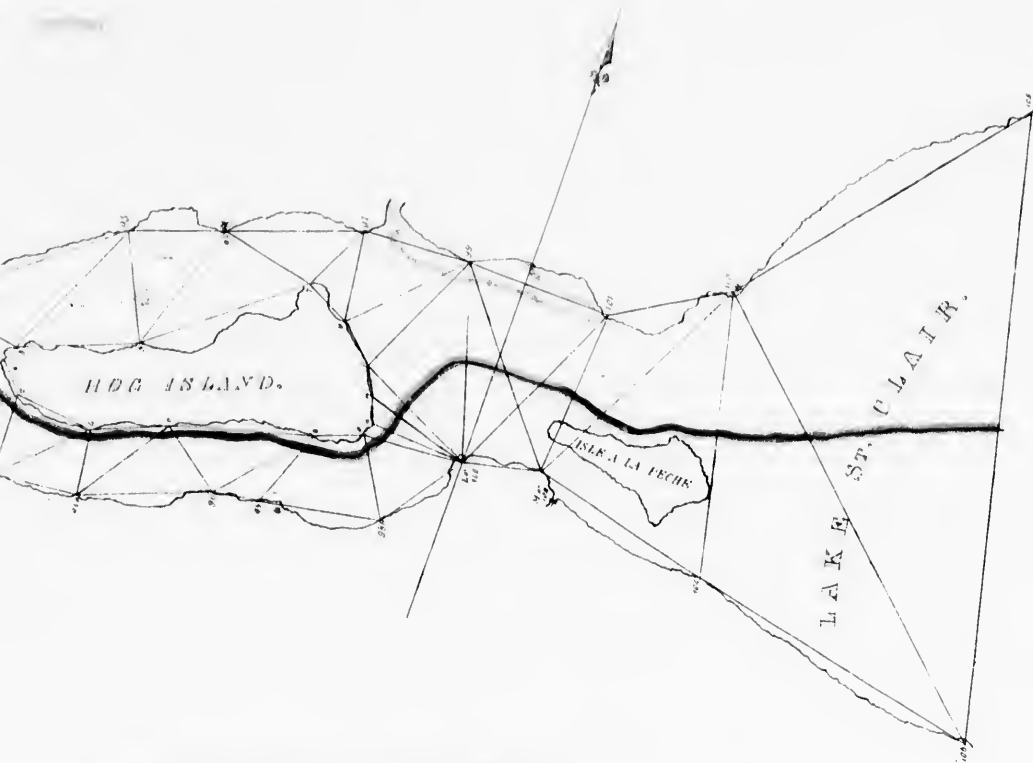
Scale of 1 French Mile or 5130 feet



We certify this to be a true
copy of the Sixth Article of the
Treaty of 1796

CHICAGO

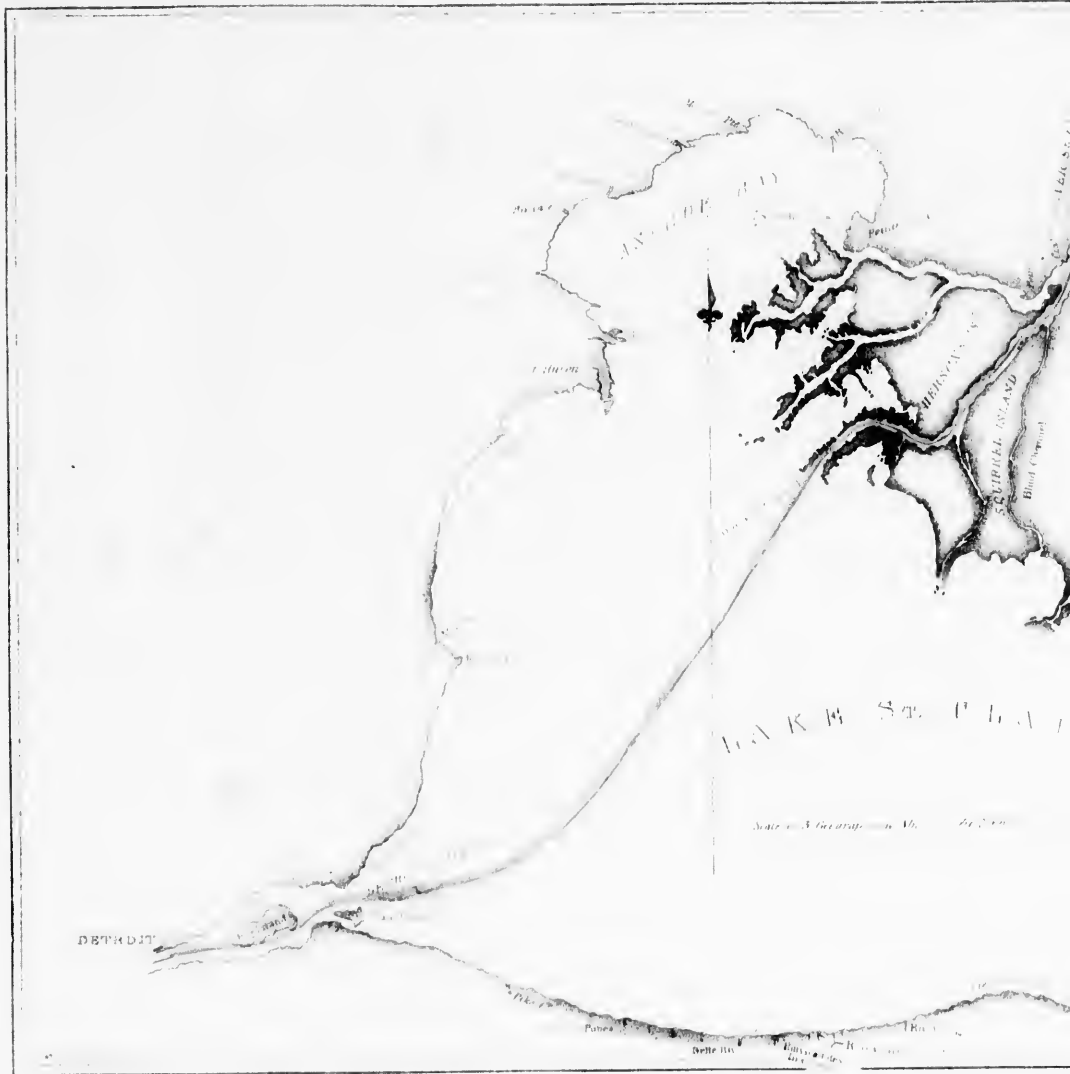
1820.



We certify this to be a true Map of part of the Boundary designated by the Sixth Article of the Treaty of Ghent, as an actual survey by order of the Board

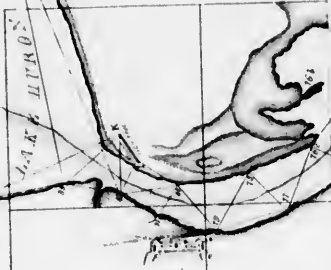
PETER W. PORTER	} ADMINISTRATIONERN.	} UNDER THE 6 TH ARTICLES OF THE TREATY OF GHENT
ANTH. BARCLAY		
WILLIAM A. HIRD		
DAVID THOMPSON		
	SURVEY BY DEERS.	







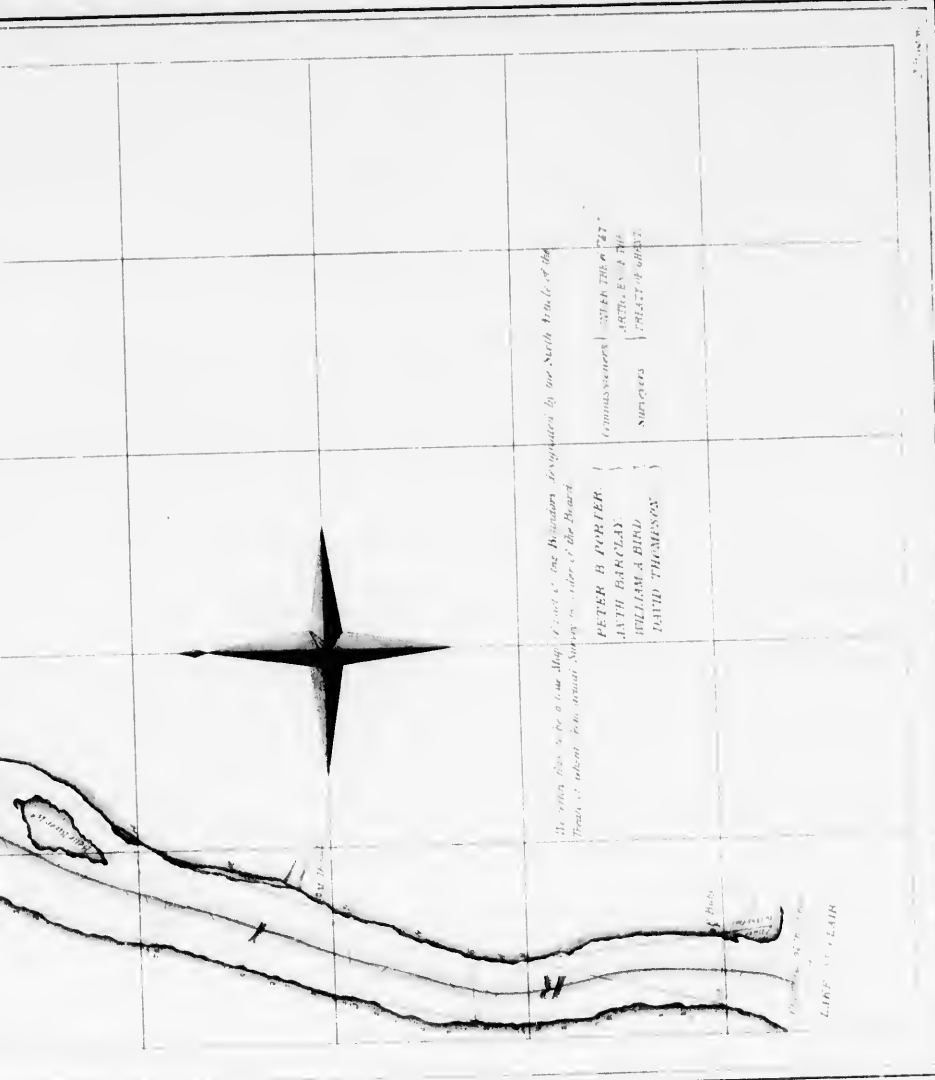
LAKE HURON



Surveyed this in the year 1806, and is the boundary between
the States of Michigan and the Territory of Wisconsin, according to the
Treaty of 1804.

PETER B. PORTER, CHANDISERS
ANTH. BARCLAY, SURVEYOR
WILLIAM D. DODD, SURVEYOR
LEWIS THOMPSON, SURVEYOR





This Map was made by the Astronomer General by the North Pole of the
 Plan of about the same Survey as that of the Board

PETER B. PORTER }
 JOHN BANCLAY }
 WILLIAM A. BIRD }
 DAVID THOMSON }
 Surveyors }
 1870, 1871 & 1872 }
 1873, 1874 & 1875 }
 1876, 1877 & 1878 }

1
 2
 3
 4
 5
 6
 7
 8
 9
 10
 11
 12
 13
 14
 15
 16
 17
 18
 19
 20
 21
 22
 23
 24
 25
 26
 27
 28
 29
 30
 31
 32
 33
 34
 35
 36
 37
 38
 39
 40
 41
 42
 43
 44
 45
 46
 47
 48
 49
 50

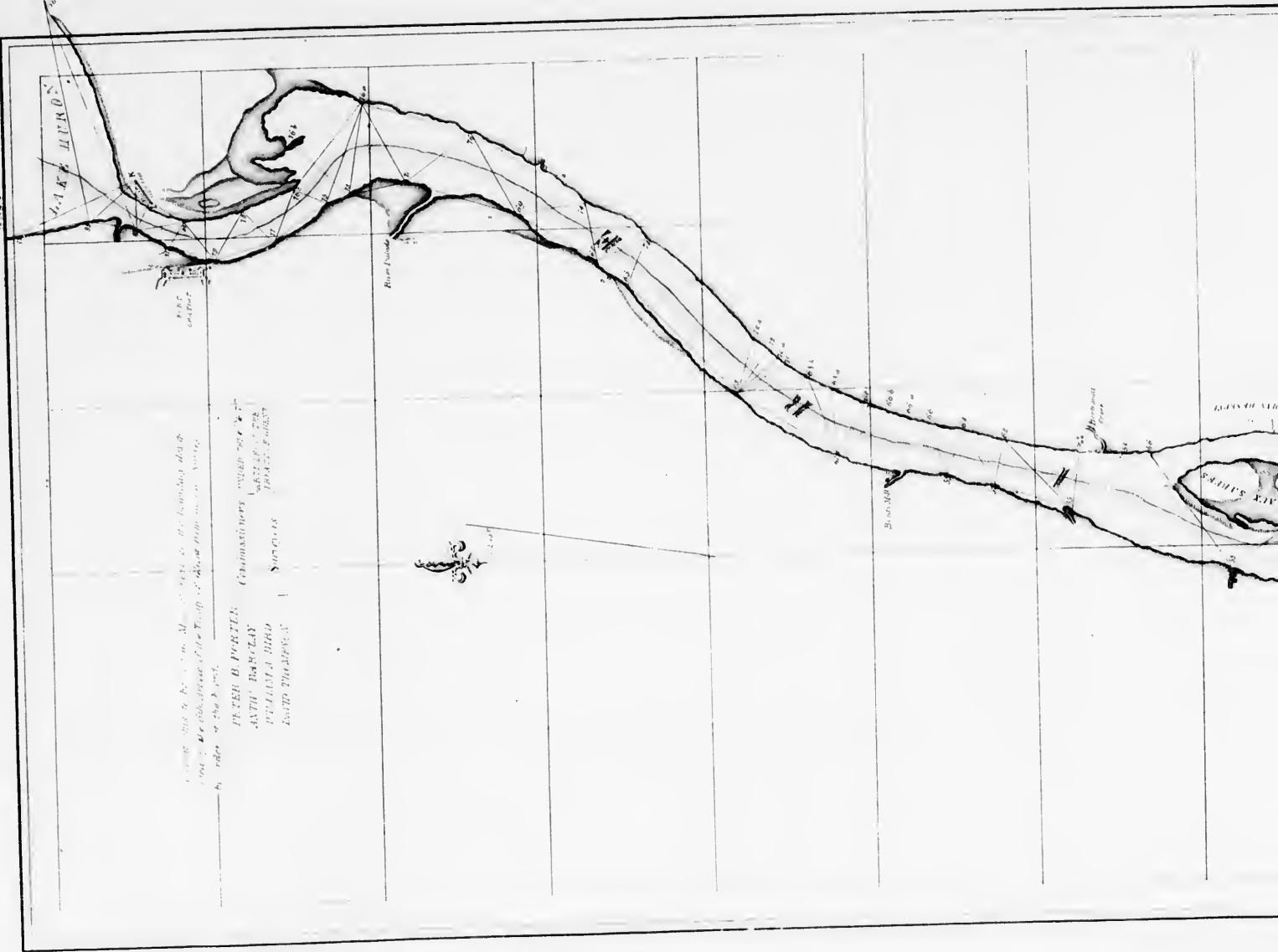
1
 2
 3
 4
 5
 6
 7
 8
 9
 10
 11
 12
 13
 14
 15
 16
 17
 18
 19
 20
 21
 22
 23
 24
 25
 26
 27
 28
 29
 30
 31
 32
 33
 34
 35
 36
 37
 38
 39
 40
 41
 42
 43
 44
 45
 46
 47
 48
 49
 50

Lake Huron

Chart of the Lake Huron, showing the principal depths, and the position of the principal shoals, as ascertained by the U.S. Fish Commission, in 1871.

COMMISSIONERS: JOHN W. WARD, CHIEF; JAMES H. HARRIS, ASSISTANT.

PETER B. PORTER, SURVEYOR; JAMES H. HARRIS, ASSISTANT SURVEYOR.







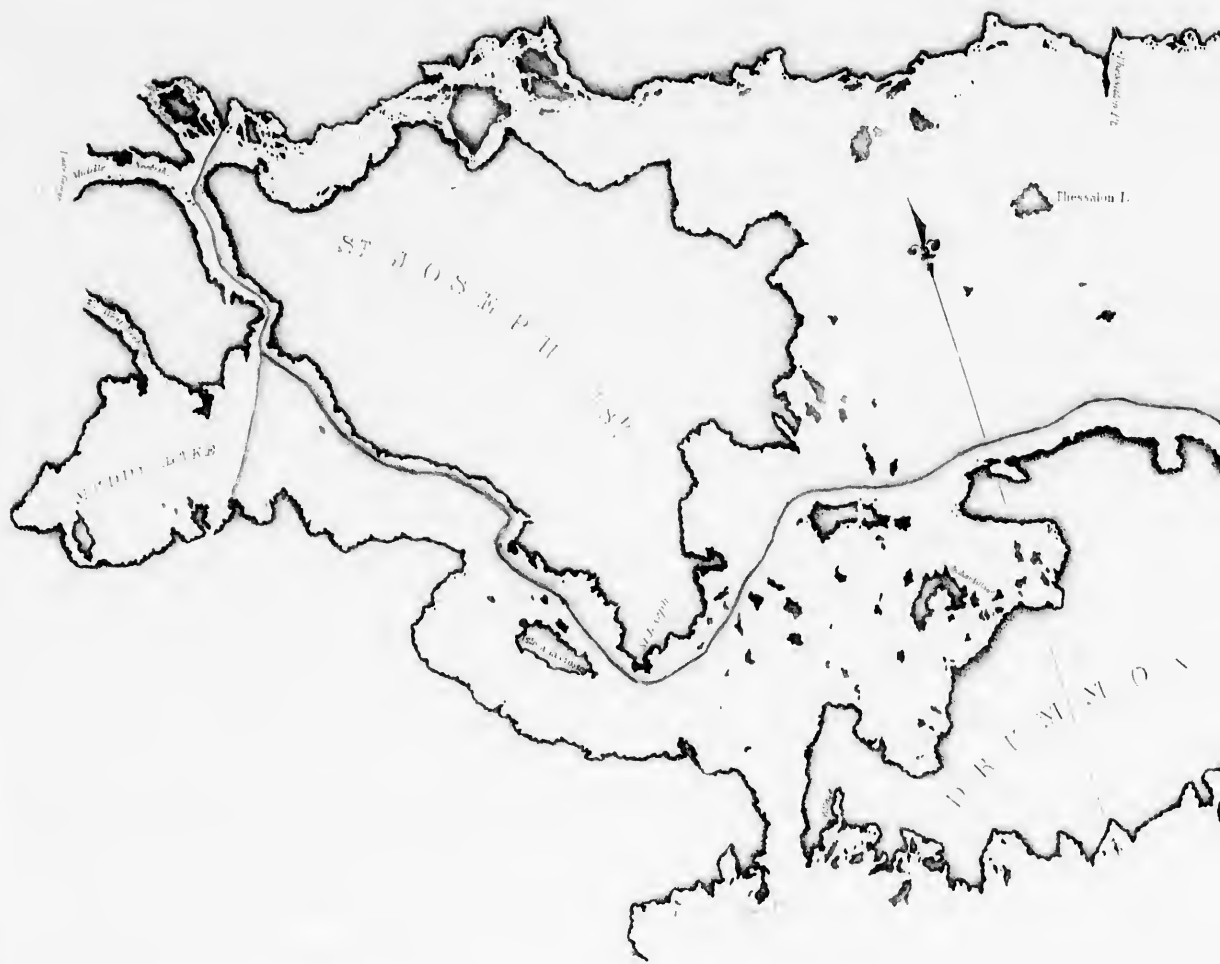






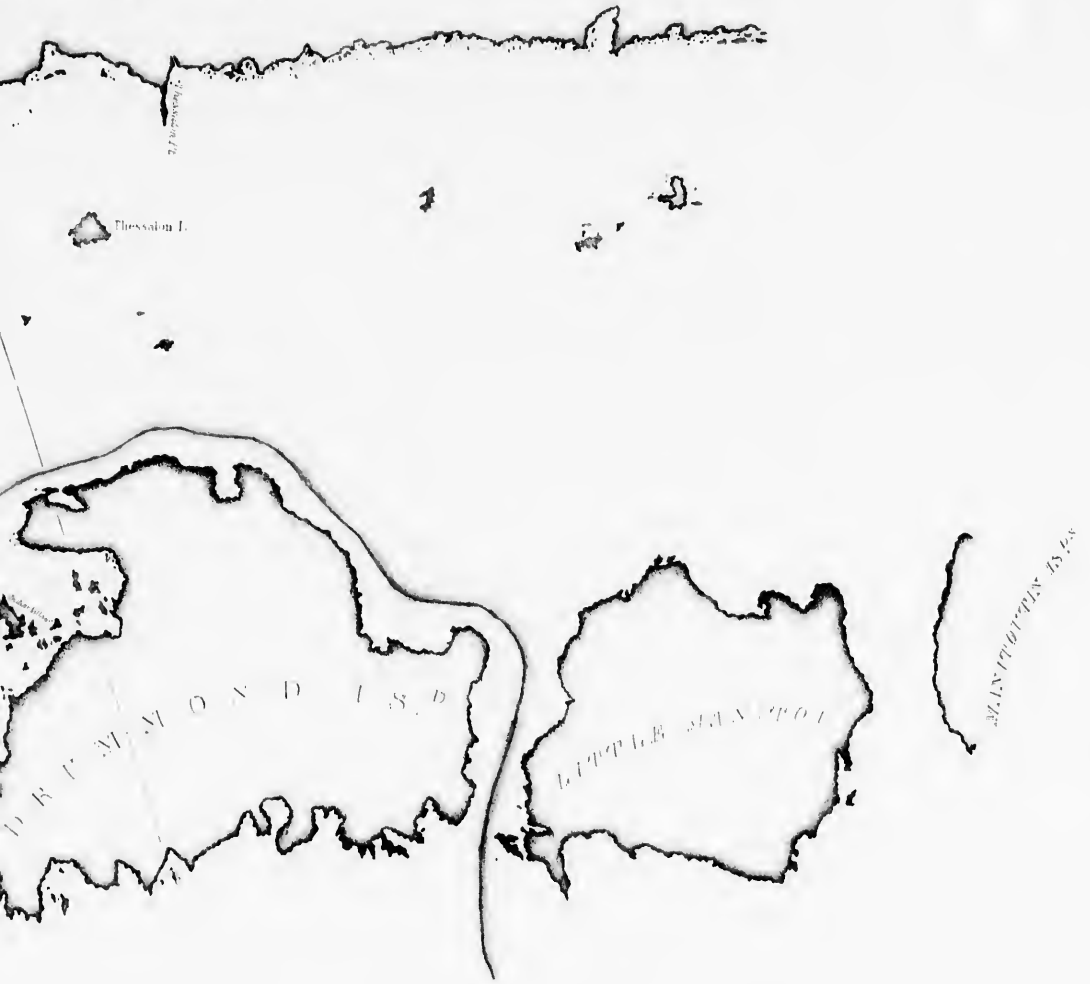


C A N A D A



Scale of 5 Geographical Miles of 000

W. 1850
W. 1850



Map of the Hawaiian Islands

We hereby certify that this Map is a true and correct copy of the original as submitted by the Honorable the Secretary of the Hawaiian Islands.

PETER B. PORTER	Commissaries	of the Hawaiian Islands
WILLIAM BURCHARD		
WILLIAM C. BIRD		
DAVID THOMSON		

