

# THE COMMERCIAL

FINANCE AND INSURANCE REPORT

Subscription, \$2.00 per Annum in Advance.

Established 1882.

Published Weekly.

DL 20

WINNIPEG, CANADA, MARCH 20, 1902

No. 30

## Jubilee Brand Building Paper

IT PAYS us to make the Best Building Paper.  
IT PAYS the dealer to sell it.  
IT PAYS the carpenter to use it and  
IT PAYS the owner to have it.  
Good business from end to end.

**MERRICK, ANDERSON & CO.**  
WINNIPEG.

Selling Agents Man. Building Paper Co.

## FLOUR

HIGHEST AWARDS at home and abroad :  
WINNIPEG EXPOSITION  
PARIS EXPOSITION.

**Hudson's Bay Company**



INCORPORATED AD 1670

The flour manufactured by the Hudson's Bay Company has received the highest awards at the Winnipeg International Exhibition. All the flour made by the Company is from specially selected wheat.

**Hudson's Bay Co'y**

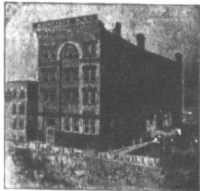


TENTS, FLAGS AND  
ROLLER AWNINGS

**THE EMERSON-HAGUE  
MANUFACTURING CO. Ltd.**  
WINNIPEG.

## CODVILLE & CO.

Wholesale Grocers.



—Packers of—

**CELEBRATED GOLD STANDARD TEAS**  
Coffee, Baking Powder and Spices.

BANNATYNE AVE. E., WINNIPEG.  
Branches: BRANDON and CALGARY.

## BROMLEY & CO.



Tents  
Awnings and  
Mattress  
Factory

Cor. Princess and Alexander St., Winnipeg

### HEADQUARTERS FOR THE FOLLOWING:

Pipes, Buttons, Playing Cards, Mouth Organs, Perfumes, Collar Buttons and Cuff Buttons, Rings and Gents' Chains, and complete stock of Smallwares. Wholesale only.

**J. McLEOD HOLIDAY**

173 McDermott St. Winnipeg

## Thomas Ryan & Co. Ltd.

We are carrying an immense stock of

### BOOTS AND SHOES

For the Spring and Summer trade. Our motto is good stock and close prices. Orders respectfully solicited.

**THOMAS RYAN & CO. Ltd.**  
King and Bannatyne Sts., Winnipeg

## GRANBY RUBBERS

If you want Rubber Boots, High front Rubbers, low cut Rubbers, we have all styles in stock.

Orders shipped same day as received.

## THE AMES HOLDEN CO. Ltd.

BOOTS AND SHOES.  
GRANBY RUBBERS.

WINNIPEG.

Send for New Granby Catalogue.

F  
R  
U  
I  
T  
S



P  
R  
O  
D  
U  
C  
E

## Our Smallware Department

Has passed into stock a shipment of Ladies' Belts and Ladies' Neckwear—the very latest styles and in all leading shades. Nothing more dainty in Neckwear has ever been shown in the west. To retail from 30c to \$1.00.

We have Belts in Leather (black or colors), Velvet, Silk and Beaded Elastic, to retail from 25c to \$1.00. We have also received another delivery of Hair Goods, consisting of Side Combs, Pompadour Combs, Back Combs, Hair Slides, etc.

Now is the time to sort up your stock with these goods. Send us your letter orders. They will receive prompt and careful attention.

## The Gault Bros. Co. Ltd.

IMPORTERS and  
MANUFACTURERS  
WINNIPEG

## READY-TO-WEAR DEPARTMENT

FOR SPRING AND SUMMER

Girl's Blouses from \$5.00 up.  
Girl's Dresses from \$4.00 up.  
Boy's Blouses from \$3.50 up.

In a large assortment of Wash Fabrics, in all children's sizes. Your customers are already asking for them. Better get a few of each, and see how quick they'll sell.

### Ladies' Blouses

You will find all the latest and most desirable lines shown here. Choice materials, good-selling and good-wearing qualities at closest prices recommended.

You'll make no mistake in putting your Blouse order in our hands. For anything else, such as Wrappers, Over Skirts, Under Skirts, and Whitewear for Ladies and Children, we have a big variety to pick from.

Remember: Every order receives the greatest care and attention and is shipped promptly. Write to-day.

## R. J. Whittle & Co.

LIMITED

IMPORTERS AND MANUFACTURERS  
WINNIPEG.

### Millinery Bags

Hat Bags

Shirt Bags

Grocers' Bags

Extra Heavy Bags

For Sugar, Bluestone, etc. Nail Boxes, Twines, Wrapping Papers for all purposes.

## McALLISTER & WATTS

43 Rorie St., Winnipeg.

WINNIPEG  
*Business College*

Cor. Fort Ave. and Fort St.

### PREPARE

For the active duties of a business life by taking a course at the Winnipeg Business College. Annual catalogue sent free to any address.

G. W. DONALD, Secretary.

## Important to Country Merchants

**W** I cannot too strongly advise our customers in country that it is in their interest to use only Tubs (either wire or wooden hoop) in shipping their Dairy Butter to market; and farmers should be asked to put up their Butter in tubs only. In the course of a year, we get a large quantity of Dairy Butter put up in boxes and Butter put up in this way, in most cases, has to be sold at a reduced price, on account of boxes breaking easily and separating at corners. The air gets in at but er and, to a large extent, destroys the flavor and, in many ways, injures the quality. The expense is large in putting these packages in proper shipping shape to go on the market. Butter boxes were made to put up Creamery Butter only and not intended for Dairy Butter.

**J. Y. GRIFFIN & CO.** WHOLESALE COMMISSION MERCHANTS AND PORK PACKERS

WINNIPEG

# BUTTER

Market still bare but receipts gradually increasing. Ship in every pound you can raise, for present conditions cannot last long

# EGGS

Dealers still doing business on a basis of pure guess work and generally at a loss. Bottom will soon be reached now. Would advise shippers not to pay more than 9c country points next week.

## R. A. ROGERS & COMPANY Ltd.

WINNIPEG

\*\*\*\*\*  
**G. F. STEPHENS & CO.**  
 Limited

IMPORTERS, MANUFACTURERS AND JOBBERS

**Paints, Oils, Varnishes, Brushes**

AND ALL PAINTERS' REQUISITES

**PLATE AND WINDOW GLASS**

Largest stock in Western Canada.

Orders receive careful attention and prompt shipment.

◆ 174-176 Market Street - - Winnipeg ◆

\*\*\*\*\*  
**The W. H. Malkin Co.**  
 LIMITED.

**Importers and  
 Wholesale Grocers**

Packers of the Celebrated  
**VICTORIA CROSS Evaporated  
 Fruits, Teas and Coffees.**

**HEADQUARTERS for Sago, Tapioca,  
 Rice and all classes of English  
 Groceries.**

Prompt attention to all letter orders.

137 Water St., - VANCOUVER, B.C.

## MINING

British Columbia.

A new hoist is being put in at the old Ironside mine, Phoenix district.

Development work has been resumed on the Seattle claim, on the North Fork of Kettle river.

During the week ended March 22, the Granby smelter treated 6,673 tons of ore. Total treated to that date, 237,342 tons.

The shaft house and galloways frame of the Jewel mine, near Phoenix, were destroyed by fire last week, the hoisting engine being somewhat damaged.

The Della mineral claim, located near Almsworth, was sold last week, under an execution to S. S. Bailey for \$1,800. Bailey had a judgment against the property for \$8,761. The mine is regarded as a promising one.

The sample mill of the Sunset smelter (formerly Standard smelter) at Boundary Falls, recently purchased by the Montreal & Boston Copper Company, is being dismantled, preparatory to putting in a larger plant.

The shipments of ore from the Rossland camp for the week ending Saturday last showed another increase, with two additional properties rejoining the producing list. The Rossland Great Western has not shipped ore since the first of the year, but last week it sent out 700 tons, while War Eagle started shipping on Saturday, sixty tons being sent out. The Le Roi mines shipped 5,500 tons, the Le Roi No. 2, 1,300. Total for week, 8,800 and for the year to date, 71,425.

**Rossland Miner:** The Rossland camp, which is located on the east slope of the Ymir range, and 21 miles west of the lower end of Kootenay lake, is attracting a large share of the attention of the mining men of Northern division, in which it is located. It is a camp of large free-milling gold lodes, which, when developed, promises to give a large output of the yellow metal. It was discovered last summer, and about 20 claims have already been made. An important deal for a group, consisting of the Turnover and Itanovo claims, has just been completed and under the name of P. Hill, who made a fortune by selling last summer a number of iron claims in the vicinity of Kitchener, has been led it by Harry Y. Jackson, of Ymir, the owner, for \$50,000.

A delegation from British Columbia, waited on Premier Laurier, Mr. Fielding and Senator Templeman in their Ottawa office, on Friday last. The delegates were Mr. Buchanan, representing the associated boards of the province; W. H. Aldridge, representing the smelting interests, and Mr. James Cronin, the mining industry. In the first place, the delegation asked that the bounty of \$100,000, which was arranged for last year by the Dominion government to be paid at \$5 per ton on the production of refined lead, be paid even if the production for the year has not exceeded 14,000 tons. At present there is no prospect of 20,000 tons production. In other words, they want \$800,000 paid over for the production of 14,000 tons, or about \$7 per ton. The delegates also asked that the duty on pig lead be increased from 15 per cent to 20 per cent, and on paint from 5 to 25 per cent.

"Cremation: Its History, Practice and Advantages," is the title of a publication issued by the Mount Royal Cemetery Co., of Montreal. Those interested in the question of cremation can secure copies of this publication. The little booklet contains a number of handsome engravings of scenes in and about the crematorium.

The fifth annual meeting of the shareholders of the Crow's Nest Pass Coal Co. was held in Toronto last week. The net profits for the year after paying all operating expenses and all charges of every kind amounted to \$270,548.30. After paying dividends at the rate of five per cent, there was a balance of \$28,142.83, was carried forward to the credit of profit and loss. The number of shares held during the year was 1312. Six hundred and thirty-six coke ovens have been constructed with a capacity of 1,000 tons of coke per day. During the year the company expended the sum of \$2,298,828.82. Expenditure for freight was \$346,002.41.

# THE COMMERCIAL

The recognized authority on all matters relating to trade and progress in Western Canada, including that part of Ontario west of Lake Superior, the provinces of Manitoba and the Territories.

Twentieth Year of Publication.

ISSUED EVERY SATURDAY.

Subscriptions—Canada and the United States, \$1.00 per annum in advance, or \$2 when not so paid; foreign countries \$2.50 in advance.

Changes for advertisements or stops should be in not later than Thursday.

Advertisements purporting to be news matter or which profess to express the opinion of this journal, will not be inserted.

The Commercial certainly enjoys a very much larger circulation among the business community of the vast region lying between Lake Superior and the Pacific coast, than any other paper in Canada, daily or weekly. The Commercial also reaches the leading wholesale, commission and manufacturing houses of Western Canada.

Office: 219 McDermott St. Telephone 234.

D. W. BUCHANAN,

Publisher.

WINNIPEG, MARCH 29, 1902.

## WESTERN WATERWAYS.

A report from Ottawa says that an application will be made for the incorporation of the Lake Superior and Rocky Mountain Navigation Co. The company which is asking incorporation to this project name, proposes nothing less than to open a waterway from Lake Superior to the Rocky Mountains. Many people will be inclined to smile at this as an utterly impracticable scheme, but it is not nearly as impractical as it would appear to the first glance.

Considerable study has been given to the question of opening a water way from the Red river to Lake Superior. There is a natural water route nearly all of this distance, a considerable portion of which is navigable. This includes the Lake of the Woods, Ratny river and Ratny lake. The only break in route is just at the Lake Superior end, where the descent to the level of Lake Superior is very sharp. There are about twenty miles at Lake Superior which would be a very expensive undertaking. From the Lake of the Woods to the Red river, the country is low and level. It is claimed that it would be an inexpensive operation to connect the lake with the Rosseau river, which flows westward into the Red river. The Rosseau rises quite close to the lake, and the intervening country is swampy.

From Winnipeg to the Rocky Mountains by water is not a visionary scheme at all. In fact, there is a navigable waterway for practically the entire distance, via the Red river, Lake Winnipeg and the Saskatchewan river. The only obstruction is the Cedar rapids, near the mouth of the Saskatchewan, where a short break occurs. Steamers were run over this route for years, the goods being transferred from lake boats at the rapids, to the Saskatchewan river steamers. Since the advent of railways, steamboats on the Saskatchewan has declined, but the day will come when it will be revived again.

There is also an alternate route from the Red river, via the Assiniboine river, Lakes Manitoba and Winnipegosis, and the Saskatchewan river. This route would necessitate some short cuts in the river improvements, which include mainly the St. James rapids on the Assiniboine at Winnipeg, a cut between the Assiniboine and Lake Manitoba, and

another cut to connect Lake Winnipegosis with the Saskatchewan river. A survey has been made of the route from the Assiniboine river to Lake Manitoba, and it is known that this would be comparatively inexpensive work. The St. James rapids would develop a water power which would alone pay a dividend on the cost of the work. The cut between Lake Winnipegosis and the Saskatchewan river is a very short one, through a swamp known as the Mossy portage. There is, in fact, an overflow from the river to the lake in high water at this point.

The Lake Manitoba route is generally regarded as the more favorable one, as compared with Lake Winnipeg, and this route would avoid the Cedar rapids on the Saskatchewan river.

The south branch of the Saskatchewan river, while not regarded as valuable for purposes of navigation as the north branch, could also be utilized in connection with any comprehensive scheme for improving our western waterways. With a little improvement no doubt some hundreds of miles of navigable waterway could be established on the South Saskatchewan system.

The Commercial has long maintain-

The horticultural Society is doing good work, and is worthy of encouragement from those who are interested in the progress of the country in these important branches of industry. The membership fee is only \$1, and this may be sent to Melvin Bartlett, secretary, Winnipeg. A free distribution of plants will be made to members this spring. Members are also entitled to certain valuable publications on fruit, flowers, bee-keeping, etc., and to free admission to the exhibition.

## Trees Thrive in Manitoba.

The engraving on another page of a scene in the Virden nurseries indicates what may be accomplished in Manitoba in a few years in the way of growing trees. Ten years ago this spring, Mr. Caldwell, of the Virden nurseries, purchased land at Virden, on the Canadian Pacific Railway line west of Brandon and started in to establish a nursery. The location was perfectly bare prairie, with not a tree or bush on the property. Now he has a magnificent grove of trees, some of them 30 feet high. Mr. Caldwell has done a great deal toward encouraging the growing of trees in Manitoba. He has gone right out among the farmers and shown them how to plant and care for trees, so as to ensure success. He specially recommends the Russian poplars, where quick growth is desired. Mr. Caldwell is thoroughly in love with his work and he delights in growing trees and helping others to do so. Within a few more men like him scattered throughout the country, the most

business of the Ogilvie Milling Co. by Messrs. C. R. Hosmer and F. W. Thompson, of Montreal and Jacques Gagné, while discussing the mammoth commercial deal gives an interesting history of the establishment of the concern from its inception and has this to say of the new proprietors:

"They can be described, however, as to the facts already given. The opinion is expressed in banking and business circles that the members of such eminently successful men as Mr. Hosmer and Mr. Thompson, the future organization will in every way be worthy of the old one and the only concern of the newly constituted concern will be even more extensive than those of the past. There will also be a large addition to the company's elevator system in the west. Mr. Thompson's headquarters will be in Montreal, when the transfer becomes an accomplished fact.

"It was from a small beginning made in 1801 that the present W. W. Ogilvie Milling company took its rise. In that year the father of Hon. A. W. Ogilvie, and of the late W. W. Ogilvie, who had emigrated from Scotland in 1800, arrived in Quebec, Jacques Cartier, near Quebec, and this shortly afterwards was followed by the erection of another mill at St. Charles Rapids. In 1852 Hon. A. W. Ogilvie, with his brothers, John and William, joined the latter in the business, which then occupied the foremost position in the milling industry of Canada. In that same year the Ogilvie Mills were erected on the Lachine rapids, where the firm began making strong flour on a large scale.

"The business continued to increase at a phenomenal rate, and at subsequent dates mills were erected at Godfrey, Sackville, Winnipeg and, finally, the Royal Mills and the City Mills, in Montreal, were added.

"Up to the late sixties Canadian flour had not secured a foremost place in the Old Country markets, the Hungarian article being superior in quality, and it was also lower in price. The Ogilvies wanted to know the reasons for this, and they took the best possible step to find out, for Mr. W. W. Ogilvie went to Hungary himself in 1870, and after a year's absence he returned, prepared to utilize the experience he had acquired. The result of his trip was that the old-fashioned system of milling was superseded, and the roller mills system was adopted.

"The Ogilvies were thus the first to introduce this system into Canada. Mr. W. W. Ogilvie was the pioneer wheat buyer in Manitoba. In 1870 he took a trip there, and spent a long time traveling from place to place in that practically unsettled country. He made minute examinations of the soil in various localities, and the result of his observations led him to form the opinion that Manitoba would be a great wheat producing region. A year later the firm's Manitoba business was commenced. It consisted of the shipment of the small quantity of 500 bushels; now it runs into millions annually.

"The Canadian cement manufacturers are asking the government to raise the duty levied there from 12½ to 20 cents per hundred.

"The wholesale and retail clothing firm of M. Staal, has been assigned. They were originally successful retailers, and branched out in wholesaling when the business failed.

"It was reported from Toronto a few days ago that the Canadian Manufacturers' Association executive committee had decided to meet in Winnipeg as the place for the next annual meeting. This will be a disappointment to Winnipeg, as the committee had made to secure the meeting for this city. It is to be expected, however, that at no very distant time Winnipeg will be chosen as the place of meeting for one of the conventions of this important body.

"The Westminster," a prominent Toronto religious publication of Presbyterian origin and edited by W. G. "The Presbyterian Review," another paper of the same kind in that city. "The Westminster" has been an exceedingly successful publication and has the special field in which it operates practically unopposed. It is only in its sixth year but in that short space of time has come to be recognized as one of the best papers on this continent and is very widely circulated throughout Canada.

Manitoba Farm Homes—Residence of J. Pritchard, Roland.

ed that our vast western waterways will in time become great highways of commerce. In the development of a water route from Winnipeg to Edmonton at least, there is nothing visionary or impracticable, neither would the improvements required be very costly. Sooner or later this great work will certainly be accomplished, thus providing a cheap highway for the shipment of bulky and heavy freight throughout the territory adjacent to this route.

## Horticultural Exhibition.

The Western Horticultural Society has decided to hold an exhibition in Winnipeg on August 28, 29 and 30 next. This will practically be the first regular exhibition of the society. A display of fruits grown in Manitoba was made last year in Winnipeg, but this was not done in the form of a regular exhibition. The total amount of prizes will be in the neighborhood of \$1,000, open for competition to the province of Manitoba and the Territories. Amateurs and professional will compete in separate classes in flowers and fruits, but in fruits no such distinction will be drawn. A prize of \$25 is offered for the best collection of vegetables and flowers exhibited by an agricultural or horticultural society. The only condition necessary for competition is that all the exhibits must have been grown by a member of the society making the exhibition.

Considerable progress has been made in Manitoba in fruit-growing, and we believe an exhibit can be made which will surprise many of our own people,

desolate parts of Manitoba—desolate owing to absence of trees—would soon be transformed into places of beauty.

## Big Milling Deal.

A telegram from Montreal on Monday states that F. W. Thompson, of Winnipeg, manager of the W. W. Ogilvie Milling Co., and Chas. R. Hosmer, of Montreal, had purchased the entire business of the milling company just named. The following later information came from Montreal Thursday:

Montreal, March 28.—The great milling deal is now an accomplished fact and to-day the purchase price was paid to the Ogilvie estate. Mr. Chas. Hosmer of Montreal, and Mr. F. W. Thompson, of Winnipeg vice-president and managing director. The latter's headquarters are to be Montreal.

Mr. Thompson who will leave for Winnipeg the first of next week stated that Mr. A. Black, the present local manager would be appointed western manager with headquarters at Winnipeg. He also assumed that a number of new elevators would be erected throughout Manitoba and the Northwest, the locations to be selected during the managing director's coming visit to Manitoba. "We propose," he said, "making the company the strongest milling company in the British Empire."

This concludes the heaviest commercial transaction ever made in the city and the great credit is due Mr. Thompson for the success of the deal. His appointment as managing director has given great satisfaction in banking and business circles.

Concerning the purchase of the

# BANK OF MONTREAL

ESTABLISHED 1827.  
**Capital all Paid-up - \$12,000,000**  
**Reserve Fund - 7,000,000**  
**Net Profit and Loss - \$76,531.64**

**HEAD OFFICE, MONTREAL.**  
 DIRECTOR: J. DE LA SALLE  
 President: J. DE LA SALLE  
 Vice-President: J. DE LA SALLE  
 J. DE LA SALLE, President  
 J. DE LA SALLE, Vice-President  
 J. DE LA SALLE, Secretary  
 J. DE LA SALLE, Treasurer

**BRANCHES** in all the principal cities and towns throughout the Dominion, and in London, Liverpool, and other foreign cities.  
**BRANCHES** in Montreal, Toronto, Quebec, and other cities in Canada.  
**BRANCHES** in London, Liverpool, and other cities in England.  
**BRANCHES** in New York, Philadelphia, and other cities in the United States.

**WINNIPEG BRANCH**  
 Incorporated in 1882.  
**Capital Authorized \$3,000,000**  
**Capital Paid Up \$2,400,000**  
**Reserve Fund \$2,400,000**

# DOMINION BANK

**Capital Authorized \$3,000,000**  
**Capital Paid Up \$2,400,000**  
**Reserve Fund \$2,400,000**

President—E. B. O'Leary, M.P.  
 Vice-President—Wm. D. Matthews  
 General Manager—T. G. Brough

**HEAD OFFICE** - - - - - TORONTO  
**WINNIPEG OFFICES:**  
 Main Office—Cor. Main and McDermott Streets.  
 F. L. PATTON, Manager.  
 North End Branch—709 Main Street.  
 S. L. JONES, Manager.

A general banking business transacted. Interest allowed on deposits in Savings Bank Department.

# UNION BANK OF CANADA

**Capital Paid-up** . . . . . \$2,000,000  
**Reserve** . . . . . 500,000

**HEAD OFFICE** - - - - - QUEBEC

**BRANCHES IN MANITOBA AND NORTH WEST TERRITORIES**  
 Winnipeg—George Fowler, Manager  
 Brandon—C. M. E. LeDuc, Mgr.  
 Regina—C. M. E. LeDuc, Mgr.  
 Saskatoon—C. M. E. LeDuc, Mgr.  
 Swift Current—C. M. E. LeDuc, Mgr.  
 Yorkton—C. M. E. LeDuc, Mgr.  
 Humboldt—C. M. E. LeDuc, Mgr.  
 Melfort—C. M. E. LeDuc, Mgr.  
 Neepawa—C. M. E. LeDuc, Mgr.  
 Dauphin—C. M. E. LeDuc, Mgr.  
 Steinkamp—C. M. E. LeDuc, Mgr.  
 Selkirk—C. M. E. LeDuc, Mgr.  
 Winnipeg—C. M. E. LeDuc, Mgr.

**BRANCHES IN ONTARIO AND QUEBEC**  
 Toronto—C. M. E. LeDuc, Mgr.  
 Montreal—C. M. E. LeDuc, Mgr.  
 Quebec—C. M. E. LeDuc, Mgr.  
 Ottawa—C. M. E. LeDuc, Mgr.  
 Kingston—C. M. E. LeDuc, Mgr.  
 Hamilton—C. M. E. LeDuc, Mgr.  
 Windsor—C. M. E. LeDuc, Mgr.  
 London—C. M. E. LeDuc, Mgr.  
 Niagara Falls—C. M. E. LeDuc, Mgr.  
 Toronto—C. M. E. LeDuc, Mgr.  
 Montreal—C. M. E. LeDuc, Mgr.  
 Quebec—C. M. E. LeDuc, Mgr.  
 Ottawa—C. M. E. LeDuc, Mgr.

A General Banking Business Transacted. Safe Deposit Boxes to Rent.

# BANK OF NOVA SCOTIA

Incorporated 1822.  
**Head Office**—Halifax  
**JOHN V. FAZZANI, Pres.**

**Capital Paid-up** - - - - - \$2,000,000.00  
**Reserve** - - - - - \$2,800,000.00

A general banking business transacted. Deposit Receipts and Savings Bank Balances.

# OIL-SMELTER-MINES

**DIVIDEND-PAYING STOCKS**  
 Working on the plan of GENERAL AVERAGE, our investments are secure. We guarantee the original investment, and no investor has ever lost a dollar on a stock purchased from us.  
 Something very valuable to offer in an oil investment. Send for particulars.  
**DOUGLAS, LACEY & CO.,** New York  
 WILSON PATTERSON,  
 Local Mgr., 303 McIntyre Block,  
 Toronto 1282.

# IMPERIAL BANK OF CANADA

**Capital paid-up - \$2,500,000**  
**Reserve - \$1,850,000**

**DIRECTORS:**  
 T. H. Merritt, Pres.; D. R. Wilkie, Vice-Pres.  
 W. R. Southland, R. B. Hunter,  
 Wm. Ramsay, Elias Rogers,  
 Wm. Hendrie.

**Head Office, Toronto.**  
 D. R. Wilkie, General Manager.  
 E. Hay, Asst. General Manager.  
 W. Moffat, Chief Inspector.

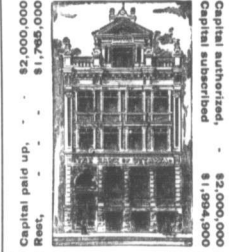
**Branches in the Northwest and British Columbia:**  
 Brandon, Man. Portage la Prairie, Calgary, Alta. Revelstoke, B. C. Fernie, B. C. Southey, B. C. Golden, B. C. Strathcona, Alta. Nelson, B. C. Vancouver, B. C. Prince Albert, Sask. Winnipeg, Man.

**Branches in Ontario and Quebec:**  
 Essex, Ont. Port Colborne, Ont. Galt, Ont. Rat Portage, Ont. Fergus, Ont. St. Catharines, Ont. Hamilton, Ont. Sault Ste. Marie, Ont. Ingersoll, Ont. Listowel, Ont. St. Thomas, Ont. Montreal, Que. Toronto, Ont. Niagara Falls, Ont. Woodstock, Ont. Ottawa, Ont. Welland, Ont.

**WINNIPEG BRANCH**  
 Savings Bank Department—Deposits received and interest allowed.  
 Agents in Great Britain—Lloyds Bank Limited, 72 Lombard St. London, with whom money may be deposited for transfer by letter or cable to any of the above branches.  
**DRAFTS** SOLD available at all points in Canada, United States and Europe. MUNICIPAL and other DEBENTURES purchased.  
 N. G. LESLIE, Manager.

# BANK OF OTTAWA

**Head Office, Ottawa.**



**Capital authorized, \$2,000,000**  
**Capital subscribed, \$1,994,000**

The Bank offers to clients every facility which their balance, business and responsibility warrant.

**WINNIPEG BRANCH** - J. B. MONK, Manager

**General Managers' Office—Toronto**  
 H. C. McLEOD, Gen. Mgr.

**Capital Paid-up** - - - - - \$2,000,000.00  
**Reserve** - - - - - \$2,800,000.00

A general banking business transacted. Deposit Receipts and Savings Bank Balances.

# SEEDS

We are the Merchants' Supply Seed House of Western Canada.  
**GARDEN SEEDS**  
**FIELD SEEDS**  
 Get our Prices on ONION BETTS. Apply for trade list if you have not got 'em.  
**BRANDON SEED HOUSE**  
 A. E. McKENZIE & CO.  
 Brandon, Manitoba.

# THE CANADIAN BANK OF COMMERCE

**HEAD OFFICE, TORONTO**  
**CAPITAL PAID-UP - \$8,000,000**  
**RESERVE FUND - \$2,000,000**

**Hon. Geo. A. Cox, President.**  
 H. E. Walker, General Manager.  
 J. H. Plummer, Asst. General Manager.  
**Winnipeg Branch JOHN AIRD, Manager**

**GENERAL BANKING BUSINESS TRANSACTED.**  
**INTEREST ALLOWED ON DEPOSITS IN SAVINGS BANK DEPARTMENT.**

# BANK OF BRITISH NORTH AMERICA

Incorporated in 1882.  
**Capital** . . . . . \$4,866,666.67  
**Reserve** . . . . . \$1,776,333.33

**HEAD OFFICE**—4 Grand Street, London, E.C.  
 Agents in Great Britain—Messrs. Lloyds Bank Limited, 72 Lombard Street, London, E.C. 4.  
 Montreal, P. O. Box 1019.  
 Toronto, P. O. Box 1019.  
 Vancouver, B. C., P. O. Box 1019.  
 Winnipeg, P. O. Box 1019.

**BRANCHES IN CANADA:**  
 London, Ontario  
 Hamilton, Ontario  
 Toronto, Ontario  
 Montreal, Quebec  
 Winnipeg, Manitoba  
 Regina, Saskatchewan  
 Calgary, Alberta  
 Vancouver, B. C.  
 Seattle, Wash. State  
 Portland, Ore.  
 Tacoma, Wash.  
 Spokane, Wash.  
 Boise, Idaho  
 Denver, Colo.  
 Salt Lake City, Utah  
 San Francisco, Cal.  
 Los Angeles, Cal.  
 Portland, Ore.  
 Seattle, Wash.  
 Tacoma, Wash.  
 Spokane, Wash.  
 Boise, Idaho  
 Denver, Colo.  
 Salt Lake City, Utah  
 San Francisco, Cal.  
 Los Angeles, Cal.

**Branches in the United States:**  
 New York—120 Wall Street, W. Larned and J. C. Wash. Asst. Pres.  
 Boston—100 State St., W. H. J. Ballou and J. B. Andrews, Asst. Pres.  
**Drafts on South Africa may be obtained at the Bank's Branches.**

# BANK OF HAMILTON

**Head Office, Hamilton.**  
**Capital (all paid up) - \$2,000,000**  
**Reserve Fund - \$1,500,000**

**BOARD OF DIRECTORS:**  
 John Stuart, President  
 John Procter, George Bouché, Hon. A. J. Macdonald, A. H. Little, Toronto, Wm. G. Stewart, J. T. G. Macdonald, H. B. Stewart, and C. W. G.

Agents throughout Ontario and at the following cities: Hamilton, London, Toronto, Niagara Falls, Windsor, Sarnia, and St. Catharines.  
 Deposits received and interest allowed.  
 General Banking Business Transacted.  
 Collections carefully and promptly effected at all points.  
 Savings Banks at all offices.  
**WINNIPEG BRANCH**—Opposite Post Office.  
 C. BARTLETT, Agt.

# THE TORONTO GENERAL TRUSTS CORPORATION

Established 1882.  
**Capital** . . . . . \$1,000,000  
**Reserve Fund** . . . . . \$270,000

**Head Office: Toronto.**  
 Branch Office, Bank of Hamilton Building, Winnipeg.

**President:**  
 JOHN HOBKIN, K.C., LL.D., Toronto.  
**Vice-Presidents**—Hon. S. C. Wood, W. H. Rusty, Toronto, Managing Director, Winnipeg; Hon. S. H. McMillan, Hon. J. H. Smith, Esq., Manager, Winnipeg.  
**Branch—James Dwyer.**

Under the approval of the Manitoba Government the corporation is accepted by the Court of King's Bench for Manitoba as a Trusts Company.  
 Chartered to act as executor and trustee under wills; trustee under trusts, deeds, settlements, etc.; administrator of intestate estates or with will annexed; trustee and guardian; trustee for bond issues and stock certificates; committee, liquidator, general agent; receiver, assignee or trustee for the benefit of creditors; transfer agent for the transfer of shares etc.  
 Money to lend on mortgage security at lowest current rates.

# The Great West Life Assurance Co.

**Business in Force Over Thirteen Million Dollars**  
**Assets Exceed One Million Dollars**

# Lac du Bonnet Mining Developing & Man'g Co. Ltd.

(Non-personal Liability)

**BRICK MANUFACTURERS**  
 Write for prices on building brick. **Office: ROOM 56 TRIBUNE BUILDING WINNIPEG**

# THE BOLE IRIG CO.

**Wholesale Druggists, Winnipeg**

**POMPEI GASTOR OIL** The largest individual seller in the country. It is the sweetest and purest Castor Oil ever sold.

**FOUR STAR FLAVORING** Surpass anything else in this line, especially the Lemon and Vanilla. Money cannot buy better. The profit on this line to the retailer is liberal. Stock them and keep your customers in good humor.

**\*\* EXTRACTS \*\***  
 Immense stocks of Heavy Goods, Patent Medicines, Drugs and Chemicals.



## FORESTRY AND ITS BENEFITS.

The annual meeting of the "Forestry association was held on Thursday evening in Winnipeg and was attended by those interested in arboriculture, both in the city and from provincial points. President Rev. Dr. Bryce occupied the chair. The report of the executive committee was as follows:

The past year has seen a very large development of interest in Forestry in the Canadian West. The subjects of forest preservation and also of tree planting have received increased attention. The visits of the officials of the Canadian Forestry association to the West have been serviceable and stimulating. Indeed, the vast extent and claims of the West on the Forestry Association suggests that it should be largely western in spirit and influence, and that some of its officials should be permanent residents in the western provinces. Just as it is found necessary to have an executive for the lands department, so, in the opinion of your committee, it is found advisable in the closely related department of Forestry to have a western executive.

Your committee, early in the year, took action in calling attention to the importance of reserving waste and timber lands from settlement for the establishment of central parks. This matter was taken up by the consideration of the department of the interior. Your committee is glad to report that decided progress has been made in this direction during the past year. Not only have five large reserves been set apart, but in four of them woodrangers have been appointed, road lines opened out to prevent fires, but close supervision has been exercised in regard to them. Through the kindness of E. F. Stephenson, Dominion land agent, who is also a member of this executive, a list of the reserves, and their areas has been supplied as follows:

	Acres.
1. Hiding Mountain reserve, approximate area.....	927,370
2. Moose Mountain (Asna) reserve, approximate area.....	103,750
3. Elk Mountain reserve, approximate area.....	70,400
4. Spruce Woods reserve (near Calgary), approximate area.....	151,040
5. Lake Manitoba, West Teulon reserve, approximate area.....	150,390
Total.....	1,411,930

The value of these reserves is well stated in the pamphlet issued by this association, as follows:

"Western Manitoba and East Assiniboia are largely dependent on the water system of the Assiniboine river. This river has its rise in the Hiding Mountain, a cluster of high hills in the northern part of this province. Several streams run from the springs and the mountainous region of the Duck Mountains. The main branches are the Shell river, Little Saskatchewan, and the Redell. The flow from the south side, and from the north side come the White Mud, Big Beaver, Dauphin, Vermilion and Valley rivers.

Turtle Mountain also, in Southern Manitoba has a network of streams running from it, watering the country along the chain of lakes—Whitewater, Pelican, Rock Lake, and Spirit Lake. In Moose Mountain likewise has flowing from it several streams.

Now these highlands are well timbered, but are in imminent danger of being deforested; settlement is naturally threatening the important food crops, by making fire more common, and by cutting the wood for farm and mill purposes.

Cut down the timber and the high hills will become dry and barren. The snows of the fresh snow springs, as the snows are melted from the bare hills by midsummer, and the feeders cut off, the Assiniboine river will be so diminished that it will dry up every season at Winnipeg—a thing of most serious moment.

The governments, the farmers and the citizens of Winnipeg and all Manitoba towns should resist selfish agitation to have these timber regions open to settlement, or to have the land to be used so lavishly that the fertile districts of Manitoba and Assiniboia,

would be in danger of becoming barren regions.

The setting a part and preservation of these reserves will do away with the threatened danger.

3. In order to assist the movement for the advancement of Forestry your executive undertook the publication of a booklet of 96 pages, under the auspices of the Canadian Forestry association. This little work, which embodied the experience of a large number of western tree-planters, was edited by the president, under the title of "William Silvering's Success." It embodies the principles underlying tree-planting, and discusses the main feature of forest preservation. Directions for carrying out the aims of this association are given by such experienced arboriculturists as Mr. S. A. Bedford, of Brandon Experimental Farm; Mr. Angus Mackay, of Indian Head Experimental Farm; and Mr. John Caldwell, practical tree-grower, of Virden. Thanks are due to Lieutenant-Governor Forges, Regina; Mr. A. P. Stephenson, of Calgary; N. S. Williams, of Cardston, Alta.; Mr. R. S. Cox, Prince Albert; and Mr. R. A. Ruttan, Edmonton, for valuable papers which served as material for the work.

The booklet was illustrated with real and the most effective way to distribute them.

## The Officers.

The election of officers was next proceeded with, the following being chosen:

Hon. President, Lt.-Gov. McMillan; President, Rev. Dr. Bryce; Vice-president, A. P. Stephenson; Sec.-Treas., M. Borlert; Directors: R. T. Riley, D. W. Buchanan, H. Sandison, C. J. Thompson, Virden; Frank Schultz, Balcar; Ald. H. H. Barclay, E. F. Stephenson.

## Mr. Stevenson's Address.

Professor Bryce then called on Mr. A. P. Stephenson, of Nelson, who spoke of some of the work undertaken along the lines of tree culture in Manitoba. The general but erroneous belief that returns from tree planting were too slow to be remunerative was being slowly corrected. Farmers were trees, but they can be easily planted and easily reared, and in the matter of protection to the crops far more than all the trouble and expense they cause. Trees set out only as regards in protection to the crops far more than all the trouble and expense they cause. Trees set out only as regards in the province are now 40 or 50 feet the farmers of the province are becoming alive to the importance of tree culture. Mr. Stephenson dealt with the best varieties of trees for windbreaks and the most effective way to distribute them.

## Floods and Deserts Result From Destruction of Trees.

Mr. E. Stewart, Dominion superintendent of forestry, read a most interesting paper on "The Utility of Forests in Relation to Water Supply." Mr. Stewart briefly described the structure of a tree, and noted the vast amount of water absorbed by a large tree, and the general laws of rain precipitation briefly described. The propensity of the American people in recklessly dissipating their forest wealth was pointed out, and the penalty, therefore, in the shape of disastrous floods every spring, shown. The deforestation of Spain, Italy, Asia Minor and Northern Africa had made those countries almost deserts, and reduced their inhabitants to a condition approaching beggary. The denudation of the forests in Ontario cause the freshets that each spring alarm the people on the banks of the Thames, the Grand, the Moira, and in Pennsylvania the disastrous flood that swept over Johnstown a few years ago was directly attributable to the clearing away of the forests of that state.

The attention given in recent years to forestry among enlightened states was next spoken of. New York is now buying back, at great expense, large tracts in the Hudson, to prevent destruction to the Hudson, the Mohawk and other streams having their sources there. Fortunately, Canada is in a better position in this



Winter Scene in the Nursery of Caldwell & Co., Virden, Man.

timeliness have been given as to its usefulness. Twenty thousand copies of the publication were distributed throughout Western Canada. Thanks are due to the provincial government of Manitoba for hearty sympathy in distributing the same allotted to Manitoba, and to the Canadian Forestry association, Ottawa, for assisting in the distribution in the Northwest Territories.

4. The executive committee has also had conference with the Hon. Colin Campbell as to the best means of working up an interest in Arbor Day for 1902 in the schools. Plans have been laid for carrying out this, and the executive will have the hearty cooperation of the department of education in this matter.

5. Notice should be taken of the practical work done in tree-planting by the Dominion government during the past year, but of this Mr. A. P. Stephenson, the inspector of forestry for Canada, is expected to give a full account.

6. It is for this association to consider whether the present organization of the society is best suited to develop an interest in forestry. All of which is respectfully submitted.

GEORGE BRUCE,

President.

GEORGE H. GREIG,

Secretary.

## Windbreaks and Bird Protection.

Mr. John Caldwell, of Virden, spoke briefly of the subject of windbreaks. He compared spruce, elm, ash, birch, basswood, maple, cottonwood, Russian willow and poplar. Of these the best are the Russian willows, particularly in the dry lands of the west. Mr. Caldwell urged the education of the farmer as a tree planter. He also favored the planting of wood lots of Russian poplar, maple and ash, all of which would yield valuable timber in a few years.

Mr. Atkinson was the next speaker, and gave a brief, but most interesting address on the relation of forestry to bird protection. Birds could only breed under natural conditions. The cutting of the pine forests of eastern Canada had resulted in the extinction of the wild pigeon. The same principle—that all birds or animals must be able to maintain in present numbers—to all furred or feathered game.

Birds, Mr. Atkinson maintained, are the grain and fruit growers' best friends. They live on the insects that would harm the crops, and yet, because they sometimes help themselves to a little of the crops they have preserved, they are shot by the men they have benefited. Mr. Atkinson concluded with a strong appeal for the preservation of bird life throughout the West.

respect, for most of the land at the great watershed is still held by the Crown. Mr. Stewart said that nearly one day should be lost by the provinces or the Dominion, in setting aside Timber Reserves.

For this purpose, and withholding from settlement the territory within their limits. The province of Ontario has within recent years very wisely reserved a large area at the head of several streams flowing into the Ottawa between Ottawa and the Mattawa rivers. The future of the west largely depends on the power of the soil for the production of cereals, but the soil requires the element of moisture to germinate the seed and bring the crop to perfection. The husbandman of the plains now no longer fears the summer frost half as much as he does the summer drought. To use every means to conserve the moisture in the soil should be the aim of the farmers of the west. Nothing will do this so well as the preservation of forests and it is this work which the forestry department is doing.

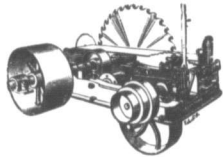
The Manitoba & Northwest Land Co., since Jan. 1 last, has sold over 50,000 acres of land, situated principally in the Assiniboia and Saskatchewan districts. Nearly the whole of this land has been sold in separate quarter sections, and the price realized averaged over \$3.50 per acre.

## The Choice is Yours

We can supply suits \$4.00 to \$14.00.  
You get all you pay for in either case.  
We do not handle the "just as good" kind.  
Ours is the best that experience, judgment and mechanical skill can produce.

### DONALD FRASER & CO.

Manufacturers of Fine Clothing  
WHOLESALE WINNIPEG—126 Princess Street.  
MONTREAL—502 St. Paul Street.



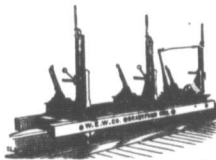
ENGINES AND BOILERS

### Waterous Engine Works Co

WINNIPEG, MAN. AND VANCOUVER, B.C.

## SAW MILL MACHINERY

Shingle Mills and Planers  
Edgers and Trimmers



## THE STUART-ARBUTHNOT MACHINERY CO., LIMITED

SUCCESSORS TO  
STUART & HARPER

.. 784-786 Main Street, Winnipeg

### HEAVY MACHINERY MERCHANTS ELECTRICIANS

Sole Agents for:

"Leonard's" Engines and Boilers, "Brown" Automatic Engines, "Canton" Mining Fire and Boiler Feed Pumps, "Cameroon" Steam Pumps, "Dodge" Wood Split Pulleys, "Beadmore's" Leather Belting, MacGregor, Gourlay & Co.'s Wood Working Machinery, Stratford Mill Building Co.'s system of complete Flour Mills.

LONDON Motors, Dynamos and Elevators.  
PACKARD'S LAMPS, Transformers and Supplies.

# A Big Purchase

1000 Cases Workingmen's Staple Lines of Rubber Shoes, to be sold at low prices.

Last season a large stock of these lines was manufactured for the sorting trade, but the winter was mild and the result was TOO MUCH STOCK. Therefore you benefit.

205 Cases Men's Heavy Low One Buckle Gum Rubbers, Neptune Quality, 1902 List . . . . . **1.55**

205 Cases, Men's Heavy High One Buckle Gum Rubbers, Neptune Quality, 1902 List . . . . . **1.85**

150 Cases, Men's Heavy High Two Buckle Gum Rubbers, Neptune Quality, 1902 List . . . . . **1.95**

173 Cases, Lumbermen's Heavy Snow Excluders, Rubber Front, Boston Quality, Cloth Top, One Buckle, 1902 List . . . . . **2.15**

The balance of the 1000 cases are made up of smaller lots of several other lines.

These are good, safe, reliable goods and orders for them are coming in freely. This is a rare opportunity and worth looking into. Further particulars by mail if requested. Fall delivery.

## ARTHUR CONGDON WINNIPEG

# The Brock Company (Limited)

WAREHOUSES:  
TORONTO AND MONTREAL

OFFICES: WINNIPEG, VANCOUVER, QUEBEC, HALIFAX

SHOWN THIS WEEK BY OUR

MONTREAL HOUSE AND REPRESENTATIVES

# Venise Foularde

25 Cent Mercerised printed goods which  
can be retailed at 15 cents per yard

REPRESENTATIVES, MANITOBA, NORTHWEST TERRITORIES  
AND BRITISH COLUMBIA:

W. L. BROOK, W. T. WALTERS, G. W. PARKER,  
ASHDOWN BLOCK, WINNIPEG

A. E. MCNAUGHTON  
VANCOUVER

**PATENTS** TRADE MARKS  
IN  
DESIGNS  
PROTECTED IN ALL COUNTRIES  
SPECIAL ATTENTION GIVEN TO PATENT  
LITIGATION  
PAMPHLET SENT FREE ON APPLICATION  
RIDGUT & MAYBEE, 103 BAY STREET,  
TORONTO

## Wholesale Jewellery

We supply all out of town merchants  
with a full line of

at wholesale prices. Write for  
particulars.

### D. R. DINGWALL Ltd.

424 and 584 Main St., Winnipeg.  
Sign of the Street Clock.

### A. CARRUTHERS & CO.

Dealers and Exporters of  
**Hides, Wool, Sheepskins,  
Tallow, Seneca Root  
and Raw Furs**

Liberal advances made on shipment  
against Bill Lading. Wood Shacks, Hides  
Ropes and Taps furnished on applica-  
tion.

Office and Warehouse:  
120-122 King St., Winnipeg, Man.

### JAS. MCCREADY & CO. LIMITED.

WHOLESALE . . .  
**Boot and Shoe  
Manufacturers**

MONTREAL. QUE.  
W. WILLIAMS, Agent.

**Grocery Trade Notes.**

Advises from primary markets indicate that raisins are scarce and becoming dearer.

Reports from Greece, under date March 1st, are to the effect that the stock of currants in that country is being cleaned up, particularly the finer grades.

On Thursday last raw beet sugar was quoted in London at 3d, the lowest price ever touched by this commodity. This weakness is due to the very large amount of overproduction and unfavorable market for sugar. The European bounty system has had much to do with this state of affairs.

A large delegation of the manufacturers of tobacco of Canada waited on the Dominion government last week to protest against the action of the United States manufacturers. They claim that the American Tobacco Co. compel their customers to deal entirely with them or they will not sell to them at all.

There are in the United States, according to an exchange, not less than 2,000 firms engaged in packing canned goods, and the number of canning establishments is increasing largely. The value of the canned goods annually shipped up to the United States is \$100,000,000. The amount of capital invested in the American canning enterprises is \$30,000,000. Machinery has greatly operated to minimize the hand labor employed in the process, and cheapen the cost of the goods.

The molasses market is without any important change, says the Montreal Gazette. According to cable advices from Barbadoes, the demand is active. The first crop, but it is reported that the same firm is offering cargo lots at 11 cent cost, although up to the present much price has been quoted direct to agents here. Considering the low price at which molasses is offered in this market, the demand with last year's season as compared with the present is slow and importers in some states are under the impression that they find it difficult to make sales at prices under the impression that the yield it much smaller than it was last year. The prices will be generally expected and they will be on the basis of \$1.10 per cask, which makes the sales date for a total account four cargoes. It was reported last afternoon that the market at Barbadoes had declined to 15¢ per first cost, and that some agents were trying to bid 14¢ for buyers to go forward for Friday's market, but we could not get the above report confirmed from any reliable sources.

**Hardware Trade Notes.**

The United States Steel Corporation is considering the advisability of spending \$20,000,000 in increasing the capacity of its various plants.

The impression prevails that iron and steel prices are abnormally high in the United States, but this is not strictly correct. Pig iron is to-day selling at \$17.50 per ton in Chicago, whereas last year ago was at \$23.00. Other iron and steel prices about correspond with these.

The following items have been placed on the free list by the Dominion government: "Malleable iron or steel, castings in rough for the manufacture of machinery and hardware, as imported by manufacturers of scissors and hand shears, to be used in making such articles in their own factories."

**Dry Goods Trade Notes.**

The advance in cotton goods amounting to about 15 per cent, made by the Dominion and Merchants' Cotton Companies, has aroused a good deal of interest among the large consumers in the east, and there is talk of appealing to the government, accordingly a report from Montreal is admitted there has been an advance in raw cotton, but consumers contend that the largest speculative and jobbing cases does not warrant such an increase in manufactured goods. Shirt manufacturers are protesting, and have spoken against the increase, and claim there is a regular combination to keep up the prices.

St. Paul, Minnesota, manufacturers are talking of establishing a permanent office in Winnipeg, with the object of advertising their wares here.

**Lumber Trade Notes.**

Hardware lumber stocks are becoming lighter in the United States, and there are fears of scarcity in some fields. The winter log cut has been light.

The new lumber yard of John A. Rutnoff, on Pembina street, Fort Carlton, is now in full operation, and ready for business. It is running on the planing mill, which it is producing lumber, in connection with the lumber yard, and is commencing shortly.

**Implement Trade Notes.**

The Messrs-Harry & Co. warehouse at Carnout, recently destroyed by fire, will be rebuilt at once.

There has been no change in the price of binder twine, either at factory or distributing points, since the first of March, when quotations for this season's business were first given out. The hemp market has strengthened considerably since March 1, which has not encouraged the market. There is only a 2c margin between the price of the raw material and the finished product at Chicago, and this margin cannot give the manufacturers an exorbitant profit.

There are three in implement lists still report a very difficult market. In shipments of stock, owing to delay in receipts of goods from the factories. There has been no change in prices, and south, have been doing an enormous trade this season, and they have been unable to keep up with the demand. Orders placed with the manufacturers last summer and fall, by Winnipeg goods, are not being filled. The manufacturers evidently think that they can hold implements for the winter, and are not filling the demand from more southerly points are filled, as the goods will not be required so soon in this market. The difficulty with the Winnipeg jobbers is in making up full car lots. In almost every order there are some lines which are not met by the manufacturers. For goods to arrive, they get into touch with parties in the country, who are able to bid for the best quality goods as they have in stock, there is the question of extra freight to pay on almost separate shipments.

**Dairy Trade Notes.**

The total annual importations of cheese into the Windward Islands and British Guiana are: Trinidad, 250,000 pounds; Barbados, 80,000 pounds; Grenada, 30,000 pounds; St. Lucia, 35,000 pounds; the Leeward Islands, 40,000, and British Guiana, 270,000 pounds. These islands offer a large market for Canadian dairy products, which might be shipped via Halifax by the Pickford & Black Line of steamers.

**Live Stock Trade Notes.**

Easter cattle brought as high as 74c per pound live weight in the Montreal market.

An English company has a representative in the west looking for a large block of land suitable for ranching. It is situated on the 15th inst. I purpose for the purpose of raising beef cattle for the English market.

Col. H. B. Dent purchased the east end abattoir, Montreal, for \$250,000, payable in forty years. The cattle market is expected to be an important one in the city and is located on the C. P. R. line in the northeast part of the city.

Col. H. B. Dent wrote Major Sanders, of the Mounted Police, Calgary, as follows from the Queen's hotel, Toronto, on the 15th inst. "I am going to the Northwest about the last week of May. I am buying mounted infantry stock now, from 12 to 15.1, and positively no higher, ages 6 to 8. I am not sure, but I think you men know now, so that they may train and break in their horses to saddle, and break in their horses to saddle, the bit or snaffle. It will be a great favor if you will let it be known that I am going to buy a certain quantity of that class of horse." He says that he will probably visit Cochrane, High River and Macgregor, and that Col. Dent has been buying on an average of 800 horses a month this winter.

E. W. Sager is succeeding Martin & Sager in the general store business carried on by them at Macgregor.

**Railway and Traffic Matters.**

A delegate is being sent to Ottawa by the Government of the Northwest Territories to interview the government regarding the railway matter. The subject was pointed in J. W. Wilson, manager of the Imperial Bank at that town.

Lake and rail traffic companies have will accept freight for westward shipments, but if navigation is not open by that time the goods will be held at shipping port free of risk until the boats commence running.

Fred P. Belcher, travelling agent for the Northern Navigation and Northwest Transportation Companies at Toronto, has been transferred to Winnipeg as agent for Manitoba and the Northwest. He succeeds Wm. Phillips, who has been appointed general agent for the Canadian Northern in Toronto.

Grain freights from Duluth and Fort William through to Montreal are quoted at 17 1/2 cents, the inside figure having been bid and the latter asked, and it is understood, that some business has been done at 17 1/2. We hear that little or nothing has been done in Chicago or Duluth for this port since the 1st of March.

The Canadian Pacific Railway Company announce that their lake and rail tariffs to points west of Port Arthur and Port William, which is now being prepared for the coming season, will contain some important reductions in the lower classes, as, for instance, the first-class rate to Winnipeg, in which Toronto is included, will be largely reduced, will be reduced by five cents per 100 pounds from last year's figures. The second-class rate is to be ready for distribution by April 1. The rail and lake freight season opens April 1.

A special dispatch to the New York Evening Post from Chicago dated March 17 said: "All-rail lines have put in an export rate of 25 cents per 100 in an export rate in loaded cars from Minneapolis is 22 1/2 cents. The rate from Chicago is 15 cents. Lake and rail rates for this time in a decline, but in an export number of years, put in an export rate on flour from the Northwest, effective at the 1st of April. It is 19 cents from Minneapolis, 14 1/2 cents from Duluth, 12 cents from Chicago. Domestic rates for flour from Montreal to Duluth, 21 1/2 cents from Minneapolis and 14 1/2 cents from Chicago."

Montreal Gazette: There has been a decided improvement in the demand for ocean freight during the past few days for spring shipment from this port, consequently a fair volume of business has been done to most ports, but the amount of room engaged to date is still far behind that of a year ago for the same period. The rate of the market is fairly steady and asking rates in some cases have been obtained by steamship agents. The May space to Manchester from this port is about filled, but we understand that no engagements have been made as yet from Quebec to either Liverpool, London or Manchester. The following are the rates for the week ending 15th: London, 1s 8d; Glasgow, 1s 3d; Avonmouth, 2s; Manchester, 1s 6d; Hamburg, 1s 6d; Antwerp, 7s; Belfast, 2s; Dublin, 2s; Leith, 1s 11d; Cardiff, 1s; Rotterdam, 2s, and Hull, 2s. According to the market, agents to hand, the New York market continues very quiet and rates are nominally quoted as follows: Liverpool, 1s 4d; London, 1s 1d; Glasgow, 1s 1d; Antwerp, 1s 4d; Rotterdam, 2s 1/2; Bremen, 2s 1/2; Hamburg, 2s 1/2.

**Tenders.**

Tenders for stationary for Winnipeg civic purposes, will be received up to April 4.

Tenders for painting and decorating Winnipeg city hall will be received to April 4.

Tenders are called for a hospital building to be erected in connection with the Immigration Hospital, Winnipeg, to be in by April 14. Plans at public works office, Winnipeg.

Tenders for Indian supplies will be received up to noon on Monday, 14th April, for the delivery of Indian supplies during the month ending 30th June, 1903, at various points in Manitoba and the Northwest Territories. Particulars from Indian commissioner, Winnipeg.

**Interesting Legal Decision.**

In the suit of Robert Muir & Co., of Winnipeg, against the Union Baking Company, Ltd., the County Court, at Justice Street, of Toronto, decided that the defendants had broken their contract for the purchase of flour, and were liable for damages. The amount of damage has not yet been fixed. His lordship, in giving his statement from the plaintiffs of the loss on each barrel of flour, and will make his final award. Muir & Co. claimed that the amount of loss was from 20 to 65 cents per barrel, and they will produce books to show their sales between the date of the breaking of the contract and December 31, 1902, the date when the last of the shipment under contract was to have been received. From these transactions the loss can be figured, as they will show that the average price was lower than that named in the contract.

**The Commercial Men.**

A. W. Lasher, one of the old-time western clothing travellers, arrived from the east on Monday last.

Harry Kite, the veteran representative of the W. E. Sanford Manufacturing Co., Ltd., has returned again to the West on a visit to headquarters at Hamilton.

The annual meeting of the United Commercial Travellers' association, Winnipeg, was held at the Commercial hall on Saturday evening last, when the list of officers took place. Present were: Wm. Crookston, president; A. E. Wallace, of Forrester & Haines, secretary; J. H. Clarke, of Clark Bros., treasurer; H. H. Holliday, of the McCormick company, secretary of the association; the election of officers referred to above, was as follows: President, W. E. A. Cavanaugh; senior counselor, F. M. Morgan; junior counselor, Saul Rowe; secretary, Wm. Crookston; C. O. Rowe; conductor, Dudley Dingie; paper, J. H. Mitchell; sentinel, W. B. McNamara; executive committee, J. H. Turnbull and John Graham. Arrangement for attending the meeting of the association at Chicago, and the grand tour, were discussed, and it was decided that as many of the members as possible be taken on the special car, which will be chartered for their use. On their way they will probably pick up the local trade at Fargo, Grand Forks and Crookston.

Among the visitors to the city this week were Wm. Crookston, president, manager of the Consolidated Cloak Co., of that city. Mr. Alvey came west in company with W. B. Mitchell, who will represent the company in this west this season on the road. Mr. Alvey was in Winnipeg 12 or 13 years ago, and he makes a great change since that time. He was at one time a resident here, connected with Winnipeg when the W. E. Sanford Manufacturing Co. first opened their branch here, 20 years ago. He represented the Sanford Company on the road for some time, and was one of the earliest travellers to carry samples throughout the west. He was in the west accepted by long journeys across the prairie by horse vehicle. Mr. Alvey had many adventures in his journey, and early days on the road in the west. On one trip he drove across the country to Edmonton, and then to Chicago, where he skiff made and came down the Saskatchewan river with his samples to North-West, and returned to Toronto. Such was the life of the early traveller in the Great West.

The Waldron-Drouin Co., Montreal, has applied for incorporation \$80,000 capital, to manufacture hats. The names of the applicants include Alfred Eaves, S. A. Drouin and F. H. Drouin, all of Montreal.

Country hides are not in very active demand in the Chicago market at present and while holders ask 8c per pound for their best stock there is but a small amount of that figure. Buyers are bidding 7 1/2c.

By a vote of 180 to 50 the Italian child labor law has adopted a bill for the protection of Italian children employed in mines and factories, and the mine law when children can be thus employed in their own end of their twelfth year. The bill also allows them from working at night.

# THE Edwardsburg Brands

## STARCH AND SYRUP

Are well known all over the Dominion as a

### STANDARD OF QUALITY

Assorted Stocks of all styles of packages now on hand with Winnipeg Wholesale Grocers. Order **CROWN BRAND SYRUP** in 2, 5, 10 and 20 lb. Tins.

## BABIES, BLACK AND WHITE, DEMAND



**E. NICHOLSON** WHOLESALE AGENT  
115 Bannatyne St. East, Winnipeg

## Everything for Power

### WINNIPEG MACHINERY & SUPPLY CO.

Wholesale Dealers

The Lauris Engine Co., Montreal Engines, etc.; Olds Motor Works, Gasoline Engines for all purposes; The Hamilton Iron Tool Co., Ironworking Tools; Cowan & Co., Woodworking Machinery; The Ohio Pump Co., Canton, Ohio, "Ohio" Steam Pumps for all purposes; Flour



Mills and Elevator Machinery and Supplies; Saw Mill Machinery; Chisholm, Boyd & White Co., Boyd's Patent Brickmaking Machinery; The United Electric Co., Toronto; Electrical Motors, Dynamoes and Supplies; Shafting, Pulleys and all Accessories. WRITE US

Second Hand Machinery Bought, Sold or Exchanged.

179 Notre Dame Ave. East, Winnipeg, Man.

## Excelsior Cement

Makes the strongest and most desirable walls and floors for buildings. Full descriptions.

**Manitoba No. 1 Hard Wall Plaster**—Up-to-date Plaster for finishing walls. Made in Manitoba by

**THE MANITOBA UNION MINING CO. Ltd.**

Office—214 Groat Exchange, Winnipeg



## FISH

Fresh salt water fish, including salmon, halibut, cod, haddock, shad, trout, mackerel, smelt, tommy cod, flounders, herring, finnan haddie, sea bass and salt water eels.

**W. J. GUEST** Wholesale Fish, Game, Poultry, Etc.

602 Main St., Winnipeg.

## SOURIS COAL

The best and cheapest fuel in the market.

Shipped direct from "mines at Roche Perce" to all points in Manitoba and the Territories.

**Souris Coal Mining Co. Ltd.**

Winnipeg Office

P.O. Box 744.

447 MAIN ST.

**THE W. E. SANFORD  
MFG'G CO., LTD.**

HAMILTON, ONT.

Wholesale

**Clothing Manufacturers**

Offices and sample rooms in the Sanford block, Winnipeg, corner of Princess and Bannatyne streets, where a complete set of samples can always be seen.

Western representatives—H. Kite, W. Dunlop, Geo. Shaw, A. McAllister

## FRANK LIGHTCAP

DEALER IN

**HIDES** PELTS, WOOL, SENECA Etc.,

EXPORTER OF

**NORTHERN FURS**

Highest prices paid for consignments and returns made promptly.

Write for circulars containing market reports and full quotations.

172-174 KING ST., WINNIPEG.

P. O. Box 484.

Harry Leadlay.

Allison Leadlay

## H. & A. LEADLAY

Successors to

Toronto Hide & Wool Co.

DEALERS IN

**HIDES, WOOL,**

**SHEEP SKINS,**

**TALLOW AND RAW FURS**

Highest market prices paid  
Consignments solicited.

298 Ross St. Winnipeg, Man.

## J. L. Meikle & Co's

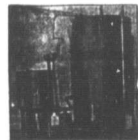
Travellers are now on the road with a complete line of Spring and Imported China, Toys, Fancy Goods, Musical Instruments, etc. Their assortment and prices will interest you.

**J. L. MEIKLE & CO.**

PORT ARTHUR, ONT.

## ACETYLENE

THE 20TH CENTURY LIGHT



The Ontario Double Generator, made in all sizes from 100 lights up.

Guaranteed to give satisfaction.

Sold on trial.

Shaffer Burners for sale.

**Northwest Acetylene Gas Co.**

312 Princess St., Winnipeg.



# Marmalade Oranges

Order now as season is over about April 1st. If you don't want the oranges we can give you it done up ready for the table—

In 7-lb. pails, per doz. . . . . 57.20  
In tins, per dozen . . . . . 7.20  
1-lb. glass jars . . . . . 2.00

Attractive package. Order sample lot.

THE **MACPHERSON FRUIT CO.**

LIMITED.

491 Main St., Winnipeg

**Genuine Wabash  
Screen Doors  
Reliable  
Refrigerators  
Lightning Ice  
Cream Freezers**

Write for prices

**MARSHALL-WELLS CO.**  
WHOLESALE HARDWARE,  
WINNIPEG.

## DRUGS

We now have a fresh stock of heavy drugs, such as EP-SOM SALTS, SULPHUR, Saltpetre, and Borax, not excelled in point of purity. Low prices for quantity.

Write for quotations.

**The Martin, Bole & Wynne Co.**  
Wholesale Druggists.  
P. O. Drawer 1461. WINNIPEG.

**S. Greenshields,  
Son & Co.**

MONTREAL

Wholesale . . .

**DRY GOODS  
MEN'S FURNISHINGS  
CARPETS, ETC.**

Winnipeg Sample Rooms:

412-414 McIntyre Block

Represented by—R. B. GALLAGHER, G. M. NEWTON, A. C. RUSSELL.



CANADA

**The World's Favorite  
Galvanized Iron**

Unequaled for Quality,  
Flatness and Durability.

**JOHN LYSAGHT, Limited, makers,  
Bristol, Eng.**  
A. G. LESLIE & CO., Montreal, Managers Canadian Branch

WE HAVE ADDED

## TRUNKS AND VALISES

to our line. We are now mailing illustrated catalogue to the trade. If you do not receive one, drop us a postal card. Any sorting order can be packed in the trunks. Three car loads now in stock and cheaper than you can buy broken lots east.

**THE KILGOUR-RIMER CO. Ltd.** WHOLESALE  
87 Princess Street, Winnipeg

# RAT PORTAGE LUMBER COMPANY

LIMITED

MANUFACTURERS OF . . .

**LUMBER,  
LATH, SHINGLES,  
SASH,  
DOORS**

AND ALL KINDS  
OF WOODWORK

Head Office and Mills at RAT PORTAGE, ONT.

Branch: Point Douglas Avenue, WINNIPEG

**Wholesale  
Boots and Shoes**

See our New Samples for Next Fall consisting of Felts, Moccasins, Gloves and Mitts, Rubbers and Overshoes. Sorting Orders Receive Prompt Attention—Stock Complete—Prices Right.

TRAVELLERS now on the road.

Berlin Rubbers (Daisy and America Brands.) Trunks and Valises

**H. G. MIDDLETON & BRO.** 139 ALBERT STREET  
WINNIPEG

Adjoining Leland Hotel.

P. O. BOX 833

## THE WESTERN PACKING COMPANY

Our new abattoir on Alexander avenue is now completed and running, and we are ready to supply the trade both in the city and country with fresh killed meat of finest quality. Mail orders given prompt attention.

We are also open to buy live or dressed hogs and all kinds of produce, paying highest cash price for same.

Abattoir and Offices

ALEXANDER AVENUE, - WINNIPEG

## HICKS BROS. & Co.

TEA IMPORTERS

And wholesale dealers in

Fancy Groceries, Butter, Eggs, Cheese

Packers of Britannia, Beaver and Buffalo Brands of Packet Tea, and sole Agents for Thos. Lipton's Package Tea for Manitoba, N. W. Territories and British Columbia.

277 Rupert Street.

274 Pacific Avenue, Winnipeg

Factory,  
WINNIPEG, MAN. YARMOUTH, N. S.

## The Redding Shoe Mfg. Co.

**Wholesale Boots  
and Shoes**

You are invited to inspect carefully our New Samples for Next Fall, consisting of Moccasins, Gloves, Mitts, Rubbers, Overshoes, and the best line of Staple Goods ever shown in the West, for their Values, and Wearing Qualities. All Solid Leather Goods, Every Pair Guaranteed.

Large and well assorted stock always on hand. Sorting orders receive Prompt and Careful Attention.

A trial solicited.

WAREHOUSES:

137 BANNATYNE AVE., WINNIPEG

P. O. Box 753.

Telephone 197



## MANITOBA.

John Langill has opened a grocery store at Clear Springs.

Hugh & Crowe have opened a general store at Selolth.

A hardware store is being opened at Patrick by Mr. Williamson.

The by-law to raise \$5,000 for school purposes at Macgregor was defeated.

A large amount of new building is already projected in Hartney for this year.

Friday, May 9, has been proclaimed Arbor Day in Manitoba by an order-in-council.

McIntyre & Castell, general merchants, Belmont, are adding a millinery department.

K. J. Graham has bought out T. J. Scales' implement business at Carberry and will carry it on in his own name.

D. H. Dingwall, of D. H. Dingwall, Ltd., has purchased the Criterion block Main street, from the McIntyre estate.

Chas. E. Lewis & Co., of Minneapolis, have succeeded Kellett, Ebersole & Co., grain, commission and stock brokers, Winnipeg.

D. A. Ross, real estate dealer, Winnipeg, has taken H. P. Simpson, formerly of Carman, into partnership. The same will be in effect on May 15.

D. W. Bole and others, of Winnipeg, are applying for incorporation as the Manitoba and Kewatin Railway, to build a railway from Winnipeg to Hudson or James Bay.

Two small houses at Carberry owned by H. Tyndal, were destroyed by fire on Sunday morning last. They were insured. The cause of the fire could not be ascertained.

Hilton, Dingman & Co., manufacturers' agents, Winnipeg, have dissolved partnership. E. W. Dingman writes and the business will be carried on by Hilton, Gibson & Co.

A general meeting of the shareholders of the proposed new fruit and produce company in Winnipeg, will be held next week, when a final decision probably will be arrived at as to future operations.

The contract for the dredging of the lower marsh, has been given to R. F. Manning, Alton Macdonald, who has been working on the marsh for the past two years, has given up work there to go into ranching.

Tenders will be let shortly for an extensive addition to J. H. Ashdown's restaurant on Bannatyne street east. The addition will be for heavy hardware and will be 40 feet by 120, the same height as the present building.

There is almost a boom in Winnipeg real estate this spring. A big demand for business and residential sites has sprung up, and prices have advanced in some cases as much as 100 per cent. Quite a lot of property has already changed hands.

P. Burnett has been awarded the contract for constructing the new apartment block to be erected by Lord Strathcona at Winnipeg. The building is to be an especially large and modern one, and will be located on the corner of Broadway and Main streets.

Leck Bros. & Co., wholesale fruit and produce merchants, Winnipeg, are moving into their new premises on the corner of Bannatyne and Horlick streets, this week. They will now be able to handle a much larger volume of business, and will have good railway facilities.

The Canadian Pacific Railway Company will erect new freight offices at Winnipeg in time, to take the place of the old offices which were destroyed by fire a week ago. The new offices will be of much substantial fabric, and will be modern in every way. They will be located on the site of the old building.

Wibley, Boyce & Co., Winnipeg, who have moved to No. 356 Main street, where they have much larger premises for their business. At their new location they have a ground floor 118 feet deep, with two upper floors and basement. They are carrying a larger stock of music goods and will do both a retail and wholesale trade.

J. A. May, who has been in the implement business at Carberry for a number of years, is moving to Edmonton, where he will carry on a Carberry a short time ago and has now resigned his office as mayor of the

town preparatory to moving. His successor in the mayoralty chair will be H. A. Manville, another prominent business man.

Porter & Co., crockery and glassware merchants, Winnipeg, will erect a new building in which to carry on their business this year. The location will be on Main street, a few doors south of Portage avenue. The building will comprise three floors, all of which will be occupied with the firm's business. Both wholesale and retail trading will be carried on.

With reference to an item which appeared in last week's Commercial to the effect that Chalmers Bros., of Bethune, of Manitoba, had purchased a property in Delaware and would open a branch office there, it is to be regretted that we were obliged to beg to make a correction. It is Wm. Chalmers, of Manitoba, to whom the property has been applied and not Chalmers Bros. & Bethune.

Still another office building is shortly to be opened in Winnipeg. The real estate firm of Christie & Leitch are remodeling the old Tribune office building and will rent it for office purposes. Some time ago it was mentioned in these columns that the exhibition association had taken quarters in that building. Their portion is now being made ready for occupation and the balance of the building will be rented to other people.

## ASSINIBOIA.

The Union bank will open a branch at Qu'Appelle, Saskatchewan.

F. Woodhill & Co. are opening a drug store at Alameda.

R. E. Gordon has bought the lumber yard of Jas. McEwen, at Arcola.

A weekly newspaper, The Signet, has been started at Maple Creek by E. Dewdney.

Joe Bruley has purchased the woodworking business of Geo. Healey, at Alameda, and will continue it.

The annual meeting of the Medicine Hat Trading Co., was held last Friday night, and 250 shares of stock were presented. A 6 per cent dividend was declared. The following board of directors were elected: W. Crawford, J. Armstrong, A. Gibson, J. Nicholson and D. Milne. W. Crawford was re-elected president. J. Armstrong was vice-president. D. Milne, manager, and H. W. Ireland, secretary—Medicine Hat News.

The council of the board of trade of Regina has unanimously passed a resolution regarding the Canadian Pacific Railway Company to so modify its freight rates on agricultural machinery and implements to and from that point that it may be made a distributing centre for the agricultural district of Eastern Assiniboia. The resolution sets forth that as Calgary and Brandon have already been granted these concessions, Regina ought also to have them, which seems to be a reasonable position to take.

## ALBERTA.

A board of trade is being organized at Frank.

Fairley & Walker are opening a general store at Frank.

Work on the government creamery at Olds is being pushed ahead.

R. Scott and J. R. Kelly have opened a general store at Frank.

Vice & Williams will open a fruit, confectionery and cigar store at Frank.

A. V. Lang contemplates opening in dry goods and gent's furnishings at Frank.

The Oriard hotel, Wetaskiwin, has changed hands. Mr. Menzies, formerly of Toronto, being the purchaser.

The Hanson-Berger Milling Company will add \$100,000 to every to their plant at Strathcona this year.

Robt. Cooper has bought the saddle and harness business of J. E. Gilmore, at Pincher Creek, and will continue it in his own name.

Crat will shortly open a grocery and flour and feed store at Frank. He is having a new building erected in which to carry on his business.

A wire from Calgary on March 29 said: This section of the west has had magnificent spring weather, with enough wind to dry up the ground. The snow has disappeared in the vicinity of the city, and there is every appearance of a genuine spring weather. Anticipation of losses in stock

have, happily, proved unfounded, and the ranchers will be able to look back at the past winter as one of the very best the country has ever experienced. Mercurial reports of the trade is improving; numerous fresh faces are seen on the street, indicating that the new season is in the hand, and it seems probable that business will be prosperous in every direction during the year.

## N. W. ONTARIO.

W. A. Bready, who kept the Queen's Hotel, had Portage, burned recently, has purchased the Mailing block and will convert it into an hotel, with additions to be added.

The Foley Mines, which are situated near Mine Centre, are to be sold by tender to the assignee on the first of May. The mines were the property of the Canadian Mines Development Company insolvent.

J. J. Meikle, of the firm of J. L. Meikle & Co., Port Arthur, has returned from the Ontario purchasing trip. Besides buying for the company the firm carries, he also has purchased a complete line of cutlery, razors, grates, saws, sewing and machine needles of all kinds. Mr. Meikle states that his variety of cheap, useful instruments, toys and fancy goods will be over double that of last season.

The house committee on coinage has reported favorably to congress on the bill providing for the adoption of the metric system of weights and measures by the United States. It provides that after January 1, 1904, all departments of the government, in the transaction of all business requiring the use of weight and measurement, except in compiling the survey of public lands, shall employ and use only the weights and measures of the metric system; and after January 1, 1907, the weights and measures of the metric system shall be the legal standard weights and measures of all in the United States.

The house committee on coinage has reported favorably to congress on the bill providing for the adoption of the metric system of weights and measures by the United States. It provides that after January 1, 1904, all departments of the government, in the transaction of all business requiring the use of weight and measurement, except in compiling the survey of public lands, shall employ and use only the weights and measures of the metric system; and after January 1, 1907, the weights and measures of the metric system shall be the legal standard weights and measures of all in the United States.

## The Weather.

The rain, which set in at Winnipeg on Friday morning of the 21st, continued with occasional short interruptions up to Thursday night, March 23, thus making in all a total of almost continuous rain. Part of the time, as on Thursday, the rainfall was quite light. And other times quite heavy. Coming within a few days after the big snow storm, the excessive rain has caused almost a flood condition in some sections. Low lands and river flats and valleys have been flooded in many parts of Manitoba. Washouts have occurred on the railway lines, thus greatly delaying traffic. On Thursday night the weather cleared up and froze, since which time it has been fine and mild. Reports from the country this morning indicated that the flood was subsiding, as a result of the frost of the past two nights and fine weather. Considerable damage has been done by washouts, destruction of bridges, etc.

## Insurance Notes.

The Canada Life Assurance company will place two additional stories on its office building of Portage avenue and Main street, Winnipeg.

Sir W. P. Forster, for 28 years president of the Confederation Life Assurance Association, Toronto, resigned office, owing to increasing years. W. E. Healey, for some years vice-president, succeeds him.

## J. M. PERKINS

## WHOLESALE.

SEEDS  
SEED DRILLS  
ONION SETS

Commission Seed Boxes. Trade List New Road.

221 MARKET STREET, WINNIPEG, MAN.



## To The Trade

Now is the time to place your orders for REFRIGERATORS and ICE CREAM FREEZERS. We are exclusively agents for Canada for the "LEONARD CLEANABLE REFRIGERATORS," which are without exception the best made in the United States.

The "MODEL" (our own make) is also a first class Refrigerator, and although less in price than the "LEONARD" they are equal to the best made in Canada.

We are also agents for the "WHITE MOUNTAIN" ICE CREAM FREEZERS, which have no superior. Prices and all other information furnished to the trade on application.

## THE McLARY MANUFACTURING CO.

183-185-187 Bannatyne Ave., Winnipeg. London Toronto Montreal Vancouver St. John, N. B.

# FRUIT TREES THAT GROW

## WRITE AT ONCE FOR SPRING 1902 CATALOGUE

DO NOT ORDER FROM OLD EDITIONS

Fruit trees, small fruits, evergreens and deciduous window stock, ornamental trees, shrubs and plants, house plants, and all other plants for the lawn—We offer in these lines the most complete member that we have been testing for 30 years and catalogue only those that are best adapted to Northern culture.

SPECIALTIES: Okanena apple, Logan's Prolific crab apple, Aldkin and Surprise plum, plants and fruit, North Star Currant, Red Jack-et gooseberry.

## THE JEWELL NURSERY CO., Lake City, Minn.

Established 1888. 1,000 Acres. Capital \$100,000.00.



and eggs, 10 to 11c; and turkeys, 12 1/2 to 14.

**CHEESE**—The season is now practically over and prices are nominal.

**BUTTER**—Creamery—There is very little chance to be had as milk is scarce and local factories are only making a very small quantity of butter, not enough for their regular customers. Wholesalers are paying 26 to 27 lb. net for their supplies at 100 lb. casks.

**BUTTER**—Dairy—There is almost a famine in the dairy butter market and prices have moved up 2c per pound in the last few weeks. The reason for the shortage is to be found largely in the fact that country roads are closed and almost no butter is offered on the market even the little that they are making. Wholesalers dealers are paying 25c per pound, commission being added for the butter in tubs, bricks or casks, 16 to 18c for ordinary quality, while seconds are only worth 10 to 12c per pound, and some of the receipts do not bring that much.

**HIDES**—Jobbers are getting 11 1/2 to 12c per pound for these. Stocks now in hand are from Ontario.

**BOSK**—The market has been weak all week and is 1 1/2 to 2c down from the cash case, commission basis, has been the price throughout. This would mean about 3c to the farmers at country points.

**POTATOES**—The market is about the same about as follows: **PRICES**—Farmers' loads delivered here, 25 to 30c per bushel; cartage, 81 per bushel; heavy 40c per bushel; tubs, 40c to 55c per bushel; cabbage, 3 to 3 1/2c per pound; lettuce and radish, 4c per pound; bunches, celery, 90c per bunch; bunches, onions, 4c per pound.

**DRESSED MEATS**—The feature is the demand for ground beef. Packers—Winnipeg butchers have shown a fine range of meats as usual, and some fine prices were paid for the carcasses suitable for this purpose. Ordinary meats hold unchanged as follows: Beef city, dressed, 7 1/2c per pound; country, 7c; under these, veal, 8 to 9c; mutton, 8c; lamb, 8 to 9c; hog, 7 1/2c.

**HOGS**—The market is very quiet, and prices remain unchanged as follows: No. 1 hides delivered, Winnipeg, worth 42c; No. 2s, 35c; and No. 3s, 31c. Country hides, frozen, are worth 5 1/2c per lb. delivered here, and some fine prices were paid for the same, including calf, 7 1/2c; hogs, 25 to 40c; stags, 10 to 15c; deerkins, 50c to \$1.

**WOOL**—Market nominal.

**TALLOW**—The local prices for tallow is 1 1/2 to 1 3/4c per pound.

**SINCE A WOOL**—Market nominal.

**LIVE STOCK**

**CATTLE**—Fat cattle for the East have been in good demand, and fat prices were paid for some. The supply was not large. Beef cattle are scarce all over the country, recovery being as high as 1 1/2c per pound for fat cattle for their regular trade, and the range of prices is 4 to 4 1/2c, according to an eye off. Cows here, stockers are worth \$14 to \$16 per head for yearlings, and \$18 to \$20 for two year olds.

**SHEEP**—Butchers have killed more sheep and lambs for their Easter trade during the past week, and fresh mutton will now be in regular supply. Sheep are not plentiful, and the regular quotation is in the neighborhood of 75c per pound delivered here.

**HOGS**—The market is steady at 6c per pound for choice packing hogs, delivered at Winnipeg.

**MILK COWS**—There is a good demand for new milkers at from \$35 to \$65.

**HORSES**—There is a good demand for horses for spring work. Prices are high, and as much as \$350 is readily paid for a fine horse of good form, of the range being from \$500 to \$1000.

**BANK CLEARINGS**

Monday, March 28—The weekly Canadian bank clearings as compiled by Toronto City for the week ending March 28th, with percentages of increase and decrease, compared with the same week of last year is as follows: Montreal, \$1,250,000, increased 10c; Toronto, \$1,350,000, increased 20c; Winnipeg, \$2,600,000, increased 1 1/2c; Halifax, \$1,250,000, increased 1 1/2c; Vancouver, \$500,000, increased 4 1/2c; St. Boniface, \$200,000, increased 20c; St. John, \$1,500,000, increased 2 1/2c; Victoria, \$1,500,000, increased 2 1/2c; Quebec, \$1,100,000, increased 1 1/2c.

**Toronto Wholesale Trade.**

Special to The Commercial. Toronto, March 29.

**Dry Goods**—Trade is active. Large quantities of cotton staples are being made and factories are truly maintaining.

**Hardware**—Increasing demand for wood and lumber. The iron and tin ranges have advanced. Iron and tin and tin plates are reported getting scarce.

**Groceries**—Good demand. All Canadian refined sugars advanced 5c yesterday, and large trade is expected after Easter.

**Hogs and Hog Products.**

Special to The Commercial. Toronto, March 29.

**Hog products** are in larger demand, the enquiry for smoked meats being especially good.

**Hogs Dressed**, \$7.50 to \$7.75 per 100 pounds for carlots; farmers' lots, \$7.75 to \$8.00.

**Pork**—Canada short cut, \$21.50 to \$22; heavy mess, \$20.50.

**Brooked and Dry Salted Meats**—Long, lean, 10c; ham, 13c; 10 1/2c; rolls, 11c; shoulders, 10 1/2c; and other grades, 10c to 11c.

**Lard**—Turkey, 11 1/2c; tubs, 11 1/2c; and tubs, 11 1/2c.

**Toronto Grain and Produce.**

Special to The Commercial. Toronto, March 29.

**Wheat** is weak and lower. Flour also dull, and buyers are holding off in expectation of lower prices owing to short supply. Oats are steady. Choice dairy butter continues scarce and firm.

**Creameries** are in big demand, and receipts are large and prices weak and lower. New wax is coming in.

**Wheat**—Red and white winter wheat is worth 7 1/2c, middle freight, spring, 7 1/2 to 7 3/4c for No. 1, Manitoba, and 7 1/2 to 7 3/4c for No. 1 hard, North Bay, \$1 1/2c for No. 1 northern, and 7 1/2c for 2 northern, and 7 1/2c for 1 1/2c per bushel outside.

**Barley**—No. 3 is quoted at 50c per bushel, middle freight.

**Flour**—90 per cent, Ontario patents, \$2 7 1/2 in buyers; bags, middle freight; choice brands are held 15 to 20c higher. Manitoba flour is unchanged at \$2.00 for Hungarian patents and \$4.00 for strong bakers in carlots, bags included, on track, Toronto.

**Milled**—Shorts, \$18.50 per ton, and bran, \$10.00 per ton, middle freight, Manitoba feed, \$22 for cars of shorts and \$20 for bran, sacks included.

**Outmeal**—\$4.00 for cars of bags and \$4.75 in wood for cars, Toronto.

**Hay**—Carlots on track, \$10.25 per ton for No. 1 timothy.

**Feign**—Case lots, new laid, 12c per dozen.

**Butter**—Best tubs and tubs, 14 to 16c; pound rolls, 18 to 20c; medium, 10 to 12 1/2c; creamery tubs, choice, 21 to 22c; prints, 22 to 23c.

**Eggs**—\$11 to 11 1/2c for job lots of cheese.

**Hides** Te for No. 1 cows, No. 1 calves, country hides, 30c for these; prime, calfskins, 10c for No. 1, and 9c for No. 2; sheepskins, 15 to 20c each; tallow, 5 1/2c to 6c.

**Wool**—Washed fleeces, 12 1/2c; unwashed, 7c.

**Beans**—\$4.00 to 4c per bushel for job lots of dried picked.

**Dried Apple**—5 1/2c for round lots, eastern, 10 1/2c to 11c.

**Maple Syrup**—Now is quoted here at \$1.10 per imperial gallon, in bulk or gallon lots.

**Honey**—10 to 10 1/2c per pound in bulk; in frames, \$2 to \$2.50.

**Poultry**—Spring chickens dressed, 7 1/2 to 8 1/2c per pair; spring ducks, 10 to 11c; turkeys, 12 1/2 to 15c for fresh killed; geese, 8 to 10c per pound.

**Potatoes**—60 to 62c per bushel for carlots.

**Wheat**—No. 1 spring wheat, about, May quoted at 70c.

**Barley**—5 1/2c for feed.

**Outs**—New, No. 2, white outs are offering at 4c in store.

**Flour**—Manitoba patent, \$3.00 to \$4.10; Manitoba Strong Bakers, \$3.70 to \$3.90; straight rolls, \$3.15 to \$3.55; winter patents, \$3.75 to \$4.00.

**Buffed outs**—\$4.50 to \$4.60 per barrel, and \$2.90 for bags.

**Feed**—Manitoba bran, bags included, \$10; shorts, \$22.

**Butter**—Choice, \$9.50 to \$10.00; No. 2, \$8.50 to \$9.25.

**Cheese**—Ontario, 11 1/2c to 11 1/2c; Quebec, 11c to 11 1/2c.

**Butter**—Creamery, finest, fresh, 20 1/2c; under grades, 18 to 19c; western dairy rolls, 15 to 17c; Manitoba butts, 15 to 14c.

**Eggs**—Fresh case eggs, 13 1/2 to 14c per dozen.

**Maple Syrup**—This, 60 to 70c per wine gallon; sugar, 9c to 10c for good.

**Honey**—White clover, comb, in large sections, 12c; strained, 8 1/2 to 9c; buckwheat honey, in comb, 8 to 9c; and extracted, 6 1/2 to 7c.

**Hides**—No. 1, 6c; No. 2, 5c; No. 3, 4c; calfskins, 10c and 8c; sheepskins, 10c to \$1 for good fresh skins.

**Vegetables**—Potatoes per bag, 80 to 90c in carlots.

**Poultry**—Turkeys, 12 to 15c; chickens, 9 to 10c; fowls, 4 to 5c; ducks, 8 to 9c; geese, 5 to 6c.

**Hogs**—Fresh killed, \$7.50 for best weights.

**Montreal Live Stock.**

Special to The Commercial. Montreal, March 29.

At the East End abattoir on Monday offerings were 650 cattle, 17 sheep and lambs and 1000 hogs.

This was Easter cattle day, but although the supply was fairly large, the display of really prime and fancy beef was small, as compared with previous years, but as the majority of the stock were of good useful kind, buyers had no difficulty in filling their wants. The tone of the market was strong. A few real prime steers and heifers weighing an average of 1500

lbs. each, sold at 7 to 7 1/2c per lb. Extra choice cattle sold at 5 1/2c to 6c, choice at 5 to 5 1/2c, good at 4 1/2 to 4 3/4c, fair at 3 1/2 to 4c, and common at 3 to 3 1/2c per lb. Sheep sold at 4 to 4 1/2c, and yearlings at 3 to 3 1/2c per lb. Spring lambs brought from 2c to 3c, and calves from 2c to 3c each, and some calves were made at 3 to 3 1/2c per lb. The demand for live hogs was good and this ton of the market is firm with receipts at 4 1/2 to 4 3/4c per lb.

**THURSDAY'S MARKET.**

Montreal, March 28.

Receipts at the East End abattoir yesterday were 230 cattle.

The highest price for cattle was 5c or about 1/2c lower than would be paid for choice Easter cattle. Pretty good stock brought 4 to 4 1/2c, calves \$1.50 to \$1.80 each. Old stock 2 1/2 to 4c. Yearlings 4 1/2 to 5c. Spring lambs 2.50 to 3c each. Among the extra choice best sold early in the week were ten head at 6 1/2c. Hogs 6 to 6 1/2c.

**Toronto Live Stock Market.**

Special to The Commercial. Toronto, March 28.

Receipts at the stock market yesterday were 87 cars, including 1,000 cattle, 180 sheep and lambs, and 685 hogs.


**Export Cattle**—Were in good demand and offerings were large. Choice ones sold at \$4.50 to \$5.25 per cwt. and medium at \$3.75 to \$4.50 per cwt.

**Butchers' Cattle**—Were in strong demand, and as the offerings were not large, the prices were higher than last Friday's market. Pickled lots sold at \$4.75 to \$5.12 1/2 per cwt. Choice butchers' cattle sold at \$4.25 to \$4.85 per cwt., and common to fair ones at \$3.25 to \$4 per cwt.

**Feeders and Stockers**—Were steady, selling at \$3.00 to \$4.00 per cwt. for short keep feeders and \$3 to \$3.50 per cwt. for heavy stockers.

**Sheep**—Were quiet, selling at \$3.50 to \$3.75 per cwt. for export waxes and \$2.50 to \$3.10 for 100 lb. lots.

**Lambs**—Were steady, though there was a little easier feeling for yearling lambs. Yearlings sold at \$4.25 to



# CROSS

AND

# FINIALS

OUR Catalogue shows a big collection of fine designs in these ornamental pieces.

We can't describe them fairly without your seeing the illustrations — but wherever such goods are needed for the artistic completion of a building, you'll find the assortment we offer both pleasing and economically reliable.

They are made of Copper or Galvanized Steel, and present a very wide choice of graceful designs.

Write us about them.

**METALLIC ROOFING CO.**

WHOLESALE MANUFACTURERS, LIMITED,  
TORONTO, CANADA.

THOS. BLACK, Selling Agent, 131 Bannatyne Ave. WINNIPEG.







**STATISTICAL WHEAT REPORT.**

**WHEAT IN CANADA.**

Stocks of wheat in Canada at principal points of accumulation are reported as follows:

Montreal	20,000
Toronto	20,000
Ottawa, Que.	20,000
Deport Harbor, Ont.	154,000
Kingston	40,000
Port Arthur and	
Keewatin	530,000
Winnipeg	520,000
Manitoba elevators	12,500,000

Total March 15	18,800,000
Total per year since 1870	2,722,000 bushels
Total a year ago	18,480,000

**BRAIDSTREET'S REPORT OF STOCKS.**

Total stocks in the United States and Canada, east of the Rocky Mountains, as reported by Braidstreet's March 15, were 82,700,000 bushels, an increase of 82,700,000 bushels the previous week.

**STOCKS IN THE UNITED STATES AND CANADA A YEAR AGO WERE 7,222,000 BUSHELS LESS, ACCORDING TO BRAIDSTREET'S REPORT.**

**STOCKS OF WHEAT AT PACIFIC COAST PORTS ON MARCH 1 WERE 442,000 BUSHELS.**

**THE VISIBLE SUPPLY.**

The Chicago visible supply statement of stocks in the United States and Canada, east of the Rocky Mountains, for the week ending March 22, was 59,910,000 bushels, being a decrease of 1,170,000 bushels for the week. A year ago the visible supply was 21,710,000 bushels, 38 years ago 14,610,000 bushels, three years ago 30,000,000 bushels, four years ago 20,000,000 bushels, five years ago 30,000,000 bushels.

**STOCKS OF OATS AND CORN.**

The visible supply of oats in the United States and Canada, east of the Rocky Mountains, in 1901, was 10,000,000 bushels, an increase of 10,000,000 bushels a year ago. The visible supply of corn in the United States and Canada, east of the Rocky Mountains, in 1901, was 10,000,000 bushels, an increase of 10,000,000 bushels a year ago, according to the Chicago statement.

**WORLD'S WHEAT STOCKS.**

Stocks of wheat in America and Europe and abroad for Europe, Feb. 1, in each year, for a series of years, were as follows—Braidstreet's report:

1902	1,000,000,000
1901	1,000,000,000
1900	1,000,000,000
1899	1,000,000,000
1898	1,000,000,000
1897	1,000,000,000
1896	1,000,000,000
1895	1,000,000,000
1894	1,000,000,000
1893	1,000,000,000
1892	1,000,000,000
1891	1,000,000,000
1890	1,000,000,000
1889	1,000,000,000
1888	1,000,000,000
1887	1,000,000,000
1886	1,000,000,000
1885	1,000,000,000

**WHEAT MOVEMENT.**

The following table gives the receipts of wheat at the four principal United States spring wheat markets, from the beginning of the crop movement, July 1, 1901, to date, compared with the same period of last year.

	This crop.	Last crop.
Minneapolis	69,138,726	60,141,290
St. Louis	8,711,480	6,981,720
Duluth	29,855,741	14,877,825
Chicago	11,875,248	11,854,680
Total	119,611,205	116,075,415

The following table gives the receipts of wheat at the four principal United States winter wheat markets, from the beginning of the crop movement, July 1, 1901, to date, compared with the same period of last year.

	This crop.	Last crop.
Toledo	6,100,208	8,084,140
St. Louis	15,866,256	18,470,721
Detroit	1,775,248	1,775,248
Kansas City	17,098,848	21,933,217
Total	41,860,560	61,363,514

**Winnipeg Prices a Year Ago.**

Following were Winnipeg prices this date last year:

- Wheat—Cash No. 1 hard closed at 84c in store Port William.
- Flour—Jobbing price per sack: Patent, \$2.10; best, 1.95; extra, 1.80.
- Milwaukee—Bran, 15.00 per ton; shorts, 13c per ton delivered.
- Oats—Carlots on track, Alberta 41 @ 44c; Manitoba, 39.00 @.
- Barley—40.00c per bushel.
- Corn—In car lots 40.00 @ per bushel of 56 lbs.
- Butter, Dairy, 12.00c per lb.; creamery jobbing at 22c.
- Cheese—10c to retail merchants.
- Eggs—12c for Manitoba fresh, less expressage.
- Potatoes—Farmers' loads on the street, 60c @ per bushel.
- Dressed Meats—Beef, 5 1/2 @ 6 1/2c for city dressed; country, 5 1/2c @ 6c; veal, 7 @ 8c; mutton, 7 @ 8c; lamb, 7 @ 8c; hog, 6 1/2 @ 7c.
- Poultry—Dressed chickens, 7 @ 8c; ducks, dressed 8c; geese, 9c; turkeys, dressed, 11c to 12c.
- Game—Nominal.
- Hides—No. 1 hides 5c per lb.
- Wool—80 @ 8 1/2c for 100 lbs.
- Seneca root—25.00c per ton.
- Island Hay—80 @ 9c per ton on cars.
- Live Stock—Cattle 10 @ 12c; sheep nominal; hogs, 6 @ 7c.

**Grain and Milling Notes.**

A Regina report says that the Winnipeg Elevator Company will erect elevators at Grand Coulee and Belle Plain, Assinboia, this year.

The manufacture of flour in Minneapolis in 1901 was larger by 133,000 barrels than that of the year before. There were manufactured here in a 12-month period, amounting to 1,000,000 barrels, against 867,000 in 1900. The next largest was made in 1898, when there was 1,129,780 barrels. Market Record.

There is a good market awaiting Canadian flour millers in the West Indies. One firm alone in Trinidad handles 50,000 barrels of flour annually, not one of which comes from Canada. There is a preference in favor of United States flour which might be easily removed if Canadian millers would take pains to do so.

The Winnipeg Elevator Company intends making extensive improvements in its grain elevator at Regina during the coming summer, which will make it one of the model country elevators of the west. It will be equipped with new and modern machinery throughout, at a cost of about five thousand dollars. The cleaning capacity will be increased two thousand bushels per hour.

A bond in the sum of \$50,000 executed by the National Surety Company for the Washburn-Crosby Milling Co. of Minneapolis to secure the bonding of Mill E for the purpose of grinding Canadian wheat, has been approved by Revenue Collector Peterson and forwarded to Washington for approval. The company expects to commence operations in the bonded mill as soon as the U. S. government consents to the plan.

A Minneapolis dispatch says: There is not much likelihood that there will be in this market a "future" trading in Manitoba bonded wheat. In Duluth the plan was tried and with some success. The bulk was under Max state (No. 1 northern for Manitoba No. 1 and No. 2 northern for Manitoba No. 2) under May delivery and specify that the contract should close in May at Minneapolis, when at the stated difference, Minneapolis has no direct interest in this. Even so, the local market takes in Manitoba wheat and pays for storage. It does not necessarily follow that a special future trade would develop in Manitoba wheat, as it is doubtful if there would be enough of it to make a practicable.

**Manitoba Wheat Stocks.**

There were 5,072,045 bushels of wheat in store at Port William and Port Arthur on March 24. A year ago stocks in store at Port William were 1,922,000 bushels. Two years ago there were 3,528,000 bushels. Stocks in store at Port William, Port Arthur, Keewatin, Winnipeg, and interior points are estimated approximately at 1,200,000 bushels, compared with 2,200,000 bushels a year ago, 9,000,000 bushels two years ago, 8,250,000 bushels three years ago, and 5,100,000 bushels four years ago.

**Grain Inspection.**

During the week ending March 21 there were inspected 323 cars of grain, comprising the following:

- Wheat—No. 1 hard, 5 cars; No. 1 northern, 113 cars; 2 northern, 143 cars; 3 northern, 4 cars; No. 4, 2 cars; feed, 3 cars; no grade, 10 cars; rejected, 2 cars; making a total inspection of wheat of 288 cars.
- Barley—No. 1, 13 cars; 2 mixed, 11 cars; feed, 9 cars; no grade, 11 cars; total, 34 cars.
- Oats—No. 1, 1 car.
- Flax—None.

During the same period a year ago the total number of cars inspected was 642, and two years ago, 425 cars.

A commission will be appointed by the federal government to investigate and report as to the best kind of railway cattle guard, with view to making its use compulsory on all railways. The bread and coal by-laws were passed at the last meeting of the Winnipeg city council. The bread by-law provides for the stamping of each loaf of bread with the weight. The other by-law provides for weighing coal.

**GRAIN STOCKS AT LAKE PORTS.**

**Port William.**

Stocks of grain in store at Port William on Monday, the 24th inst., were as follows:

Wheat—1 hard, 319,800 bushels; No. 1 northern, 1,854,000 bushels; No. 2 northern, 2,227,915 bushels; No. 3 northern, 19,917 bushels; other grades, 25,762 bushels; making the total of wheat 4,529,491 bushels.

Oats—60,363 bushels.

Barley—No. 2, 27,471 bushels.

Receipts of wheat at Port William during the week ending March 24 amounted to 69,432 bushels, and shipments to 4,596 bushels. Receipts of oats amounted to 14c, and shipments, nil. Receipts of barley were nil, and shipments nil.

**Port Arthur.**

Stocks in store at King's elevator, Port Arthur, on the 24th inst. were:

Wheat—No. 1 hard, 4,140 bushels; No. 1 northern, 51,317 bushels; No. 2 northern, 26,267 bushels; other grades, 125,350 bushels; total, 215,974 bushels.

Oats—No. 2 white, 3,259 bushels; mixed, 14,774 bushels; total, 21,073 bushels.

Receipts of wheat at this elevator during the week were 20,721, and shipments, 7,870.

Stocks of grain in store at the new Canadian Northern elevator at Port Arthur on the 24th inst. were as follows:

Wheat—No. 1 hard, 26,992 bushels; No. 1 northern, 62,240 bushels; No. 2 northern, 193,254 bushels; No. 3 northern, 11,317 bushels; other grades, 3,994 bushels; making a total of 298,897 bushels. Receipts of wheat during the week amounted to 86,218 bushels.

Oats—6226 bushels.

WANTED—SEVERAL PERSONS OF character and good reputation in each state (one in this county) required to represent and address old established wealthy business house of solid financial standing. Salary \$1800 weekly, with expense allowance, all payable in cash each Wednesday direct from head office. Horse and carriage furnished, when necessary. References. Enclose self addressed stamp and name of Manager, 516 Cross Street, Chicago.

**The Dominion Elevator Co**

LIMITED

**GRAIN EXPORTERS**

OFFICE:

GRAIN EXCHANGE WINNIPEG

**KIRKPATRICK & COOKSON**

Montreal.

Consignments of Grain and Manitoba Produce solicited.

F. O. B. Orders of Wheat, Barley, Oats, etc., required.

Established 1860, Manitoba Grain Code used.

MONTREAL TORONTO WINNIPEG

**JAS. CARRUTHERS & CO.**

GRAIN EXPORTERS

MONTREAL TORONTO WINNIPEG

**The Northern Elevator Co.**

LIMITED.

**GRAIN**

HEAD OFFICE WINNIPEG.

BRANCH OFFICES:

MONTREAL NEW YORK LONDON, ETC.



**WINNIPEG GRAIN AND PRODUCE EXCHANGE**

C. A. YOUNG, President

GEO. V. HASTINGS, CHAS. S. HILL, Vice-President. Sec'y Treas.

LICENSED AND BONDED

**THOMPSON, SONS & CO**

GRAIN COMMISSION MERCHANTS

All grades of Wheat, Oats and Barley handled. Best prices; prompt return. Liberal advances on B. L. Write for further information.

WINNIPEG.

**H. D. METCALFE**

GRAIN EXPORTER

230 GRAIN EXCHANGE WINNIPEG 12 STOCK EXCHANGE MONTREAL

Direct connection with European and U.S.

**THE WINNIPEG ELEVATOR CO.**

LIMITED

**GRAIN EXPORTERS**

OFFICE: GRAIN EXCHANGE, WINNIPEG

**ROBT. MUIR & CO.**

GRAIN DEALERS AND MILLERS

SHIPPERS OF WHEAT, OATS, BARLEY, FLAX, FLOUR, BRAN, SHORTS, CORN. Buy or sell on commission. Before buying or selling grain in car lots, write or wire us for quotations. Advance and cash consignments. Licensed and bonded.

WINNIPEG, MAN.

**M. McLAUGHLIN & CO.**

ROYAL DOMINION MILLS, TORONTO.

CAPACITY, 700 BBL'S DAILY

MILLERS OF

No. 1 Manitoba Hard Wheat



ESTABLISHED 1874 30 YEARS' EXPERIENCE

**CARRUTHERS, BROCK,  
JOHNSTON & DRY**

RENT  
COLLECTIONS  
A  
SPECIALTY

**Insurance,  
Financial,  
Real Estate  
Agents**

ESTATES MANAGED  
MONEY INVESTED

J. & J. TAYLOR SAFES AND VAULT  
DOORS.

481 MAIN STREET - WINNIPEG

**JOHN W. PECK & CO.**  
MONTREAL WINNIPEG  
VANCOUVER

Manufacturers of

**Clothing  
Furs  
Shirts**

Dealers in  
**Men's Furnishings,  
Hats, Caps**

**SEEDS**

Merchants for 1902

PUSH THE

**Steele-Briggs Seeds**

They have the four points for success  
in your seed business, viz.:

- 1st Always Reliable.
- 2nd Most Widely Advertised.
- 3rd Most Attractively Got Up.
- 4th Give a Good Round Profit.

See our big daily and weekly "ads."  
They don't forget the merchant. Please  
return the compliment by pushing our  
seed, whenever possible, from box or  
catalogue.

We handle all seeds in all quantities  
and cheerfully answer any written or  
wire enquiries.

**THE STEELE-BRIGGS SEED CO. Ltd**  
Toronto

**SEEDS SEEDS**

The Northwest Seed and Trading Co.,  
Ltd., have opened with a complete stock  
of

**Fresh Garden, Field  
and Flower Seeds**

Stock selected with a special view to  
the requirements of this market; our  
Mr. Chester having had over 20 years  
experience in the seed trade here.

**NORTHWEST SEED & TRADING CO., LTD.**  
505 Main St. Winnipeg.

PLEASE NOTIFY.  
Subscribers to The Commercial are re-  
quested to notify the office of any ir-  
regularity in the receipt of their paper.

**BICYCLES FOR 1902**

Cleveland  
Brantford



Massey-  
Harris  
**PERFECT**

If you have not secured an agency for one of the above  
lines write us to-day and add a Bicycle Department to your  
business. The Profits are Satisfactory and Sure.

**CANADA CYCLE & MOTOR CO. Ltd., Winnipeg**  
BICYCLES AND ACCESSORIES

**W. R. TALBOT & CO.** Spring Lines

239 PORTAGE AVENUE.

DEALERS IN

**Wall Papers  
Pictures and  
Frames**

Now in stock, a full range of Spring  
Goods, Clothing, Furnishings, Small-  
wares, Fancy Goods, etc. We call at-  
tention especially to our RUBBER  
COATS, which are of good quality and  
marked low.

All orders will receive prompt atten-  
tion.

**EASTERN CLOTHING HOUSE**  
J. GENSER, Prop.  
223 Alexander Ave. Winnipeg.



**"What we have we'll hold"**  
As every man who has purchased Page Fencing  
knows he has the best Fence on the market.

**"What we haven't we're after"**  
and if you are in the market for fencing we would  
like to have you consider the merits of the "Page"  
Fence. Coiled Wire, made in our own Wire Mill,  
woven by ourselves. Shipped already to put up.

**The PAGE WIRE FENCE CO. (Lid.)**  
WALKERVILLE, ONT.


ROSS & ROSS,  
General Agents, Winnipeg.

**"5 in 1"**

You are requested to call or send for  
samples of the "5 IN 1" LETTER EN-  
VELOPE, SAVES LABOR, TIME AND  
EXPENSE. Used extensively by all  
Banks, Merchants, etc., throughout the  
Dominion. Used in the city by the PRO-  
VINCIAL GOVERNMENT, Alloway &  
Champion, A. J. Brown & Co., Forrester  
& Hatcher, E. Knight & Co., G. F. Sta-  
bleford, Dr. Leeming, Dr. English, Win-  
nipeg Coal Co., and a host of others.

**"5 in 1" LETTER ENVELOPE CO.**  
TORONTO.

Manager for Winnipeg,  
LEWIS SAMUELS,  
Telephone 112. 57 Arthur St.



**It's  
Ten  
To  
One**

ITS TEN TO ONE

That you'll enjoy smoking our Cigars. They're  
always the same—fragrant—sweet—pure. Ask  
for any of the following:

**"FLOR DE TOM LEE" The "T. L."**  
**"MAGNIFICOS" "ROSA LINDA"**  
**"LEE'S PREMIER" "LEE'S PERFECT"**

And you get cigar satisfaction.  
"They're made good on purpose."

**WESTERN CIGAR FACTORY**  
WINNIPEG  
T. LEE, Prop.

**Stephens' Inks** Spring  
Is Here

We can now ship ink  
with safety. We have a  
well assorted stock of  
Stephens' and Stafford's  
Inks, Muclage and Paste.

For the coming Holidays we offer you Fireworks, Flags, Cannons, Pistols,  
etc. For Spring—Tops, Marbles, Skip Ropes, Express Wagons, Croquet, etc.  
In Season—Moth Bags—two sizes.  
Your valued orders solicited.

**THE CONSOLIDATED STATIONERY CO. Ltd.**  
McDERMOTT AVENUE, WINNIPEG



WINNIPEG PRICES CURRENT

GROCERIES FOR ordinary lots, with usual discounts for cash or large lots.

Canned Goods. Per Case. Apples, 3 doz., 2 doz., 1 doz. ... Beans, 2 doz., 1 doz. ... Black or Lawton berries, 2 doz. ...

Prunes, 80 to 100 ... Prunes, 50 to 80 ... Prunes, 20 to 50 ... Prunes, 40 to 50 ...

Matches. Per Case. Telephone ... Tiger ... Lancer, Swedish, 500 in box, per 57s 7 1/2

Nuts. Per lb. Brazil ... Taragon almonds ... Pecans, roasted ... Peanuts, green ... French walnuts ... Sicily filberts ... Shelled almonds ...

Syrup. Per lb. Extra bright, per lb. ... Medium, per lb. ... Maple case 1 doz 1/2 gal. tins ...

Sugar. Extra standard gran. 4.80 ... Extra ground 6.40 ... Powdered 5.20 ... Lumps 8.40 6.05 ... Bright yellow sugar 14.10 14.90 ...

Salt. Per lb. Rock salt 1 1/4 ... Common fine 2.05 ... Common coarse 1.40 ...

Spices. Per lb. Assorted herbs, 1/4 lb. tins. 75 ... Allspice, whole 18 ... Allspice, pure ground 18 ... Cloves, compound 13 ...

Teas. Per lb. China black 5 40 ... Choise 5 40 ... Common 1 20 ...

Tobacco. Per lb. T. and B. 3/4, 5/8, and 3/4 ... T. and B. 3/4 ... T. and B. 1/2 ...

Cheewing Plug. Lower quality 72 ... Caramell chewing plug 60 ... Currency bars, 10 1/2 ...

SMOKING. Virgin Gold, 50 ... Virgin Gold, 30 ... Dulls Eye, 1 1/2 and 1 3/4 ...

Wooden Ware. Per doz. Falls, 2 hoop clear. 11.50 ... Falls, with hoop 12.00 ... Falls, Star fibre 11.50 ...

CURED MEATS, ETC. 2.40. Lard, pork salt, steam ren. ... Lard, pure salt, 5 and 10 lb. tins ... Lard, 50 lb. tubs ...

Meat Sundries. Summer sausage, lb. 1.07 ... Bologna sausage, lb. 1.07 ... Pickled pigs feet, kits. 1.25 ...

DRUGS. Following are prices for bulk lots, with usual reductions for unbroke packages. Alum, lb. 1.08 1/4 ... Alcohol, 100 ... Bleaching powder, lb. 07 ...

Mr. C. M. Hays' Opinion. Montreal, March 22. The more seriously men think over Professor McLean's recommendations regarding the establishment of a railway commission, the more are they convinced the body he proposes to introduce would be no improvement on the railway committee of the privy council, now in existence.

Mr. C. M. Hays' Opinion. Montreal, March 22. The more seriously men think over Professor McLean's recommendations regarding the establishment of a railway commission, the more are they convinced the body he proposes to introduce would be no improvement on the railway committee of the privy council, now in existence. Mr. C. M. Hays has remarked to-day, so far as he could see Professor McLean's commission would take over the principal duties of the railway committee which seems heretofore to have filled all requirements that could reasonably be expected of it. The present proposal seemed to be a duplication of the powers of the committee in another body without conferring any special benefit on anybody. Mr. C. M. Hays says the new as would simply bring the new commission into existence who would exercise most of the powers hitherto exercised by the railway committee. The committee has been exercised over the size as regards the manner in which they have discharged their functions. Their powers have been exercised conscientiously and fairly. Such is the opinion of Mr. Hays respecting the committee after a close observation of their work.

A dispatch from Rome to the Central News of London, England, says the strike of agricultural laborers is spreading throughout Italy and that 150,000 farm laborers are now out in the province of Ferrara, Bologna and Vicenza, while in sixteen other provinces it is reported the laborers are organizing.

TODHUNTER, MITCHELL & CO.

Importers and Manufacturers High Grade Coffees High Grade Spices

"Most Excellent" Cocoa "Most Excellent" Chocolates Baking Powders Flavoring Extracts, Etc.

TORONTO - ONTAR

LEITCH BROS

Oak Lake Brand "Anchor Brand" Flour

FROM NO. 1 HARD WHEAT.

Brand, Shorts and all kinds of Chopped Feed and Grain.

OAK LAKE, MAN.

Canned Goods. Per Case. Apples, 3 doz., 2 doz., 1 doz. ... Beans, 2 doz., 1 doz. ... Black or Lawton berries, 2 doz. ...

# D. S. PERRI & COMPANY Limited

MANUFACTURERS OF **BISCUITS AND CONFECTIONERY**

LONDON CANADA

Winnipeg Branch—327 Notre Dame Avenue

Write for Quotations

## The British Columbia Mills Timber and Trading Co.

MANUFACTURERS OF

HEAD OFFICE, VANCOUVER, B.C.

### FIR AND CEDAR LUMBER

SHINGLES, DOORS, WINDOWS, ETC.

Winnipeg Office: JAMES A. OVAS, Manager

Mills:  
H-STINGS SAW MILL, Vancouver  
ROYAL CITY MILL,  
ROYAL CITY MILL, New Westminster  
MOODYVILLE MILL, Burrard Inlet

## Some Horse Nail Pointers:

The "C" brand Horse nails are not the lowest priced, but they are the cheapest—that is if you will take quality, pattern and durability into consideration. It is an accepted truth which has found expression in the saying "the best are the cheapest." To assert that the

"C" brand Nails are the best is only to repeat the experience of the hardware trade and farmers who have bought and used them for the past thirty-seven years. They are the Standard Horse Nails of Canada, because they are the best. No other Horse Nails made in Canada have ever been sold at a better price than the "C" brand. Why?

Because there were none better. If you want the best article, either Horse Nails or anything else, you have to pay a price corresponding to its value. The best cost the most to produce. Our "C" brand costs more to make, because we do not admit anything of a cheap nature into their composition, or the process of manufacture. The best material that is known or used in the world for the manufacture of Horse Nails forms the basis of the "C" brand. The "hot forged" hammered process is the only one we use, because it thoroughly hammers a Nail from the solid rod of Swedish charcoal-toughened steel, which we use exclusively, and is made specially for our works in Canada.

If other brands were sold at one seventy-five cents a box lower than our "C" brand, it would only reduce the cost of the 32 nails used in shoeing a horse—one cent. There is no economy in using cheap Nails. Order the "C" brand and satisfy yourselves and your customers.

All the leading wholesale firms in Winnipeg have them for sale; if not, send your orders direct.

Canada Horse Nail Company  
MONTREAL

## THE SOVEREIGN BANK OF CANADA

Notice is hereby given that a meeting of the subscribers to the stock of the Sovereign Bank of Canada will be held at No. 14 King street, west, in the city of Toronto, on Wednesday, the 23rd day of April, 1902, at the hour of twelve o'clock noon, to determine the day upon which the annual general meeting of the shareholders will be held, and to elect such number of directors, not less than five, or more than ten, as they may think necessary, to hold office until the annual general meeting in the year next succeeding their election; and also for the further purpose of passing by-law to regulate the following matters incident to the management and administration of the affairs of the Bank, that is to say:

The record to be kept of proxies, and the time within which proxies must be produced and recorded prior to a meeting in order to entitle the holder to vote thereon.

The quorum of the board of directors, which shall not be less than three, their qualification subject to the provisions of the Bank Act;

The method of filling vacancies in the Board of Directors, whenever the same occur, during each year, and the time and proceedings for the election of directors in case of a failure of any election on the day appointed for it.

D. M. STEWART,  
Secretary and General Manager.  
By order of the Provincial Board.



Sealed Tenders, addressed to the undersigned, and endorsed, "Tenders for Hospital, Immigrant Building, Winnipeg, Man.," will be received at this office until Monday, April 14th, inclusively, for the construction of a Hospital, at the Immigrant building, at Winnipeg, Man. Plans and specifications can be seen, and form of tender obtained at this department, and at the office of Mr. Joseph Ernest Cyr, Public Works Office, Winnipeg, Man.

Persons tendering are notified that tenders will not be considered unless made on the form supplied, and signed with their actual signatures.

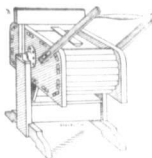
Each tender must be accompanied by an accepted cheque on a chartered bank made payable to the order of the Honourable the Minister of Public Works, equal to ten per cent. (10 p.c.) of the amount of the tender, which will be forfeited if the party declines to enter into a contract when called upon to do so, or if he fails to complete the work contracted for, if the tender be not accepted the cheque will be returned.

The department does not bind itself to accept the lowest or any tender.

By order,

FRED. GELINAS,  
Secretary.

Department of Public Works,  
Ottawa, March 13th, 1902.  
Newspapers inserting this advertisement without authority from the Department will not be paid for it.



### MERCHANTS

Why not sell the cheapest and best Washers. You know the price of the Ross Washer is \$10. They clean at one time in 12 minutes a quantity of clothes equal to about eight shirts or three sheets and require a boiler full of suds. Now I am prepared to give you at one time a quantity of clothes equal to ten shirts or four sheets will clean at one time a quantity of clothes equal to ten shirts or four sheets with a boiler full of suds and in less time, and if I cannot clean the clothes as well as any \$10 washer that is in use, I will pay one hundred dollars for the first test, which will be in Winnipeg. The price is only \$3.00, not \$10.00. These washers have been sent to the old country to friends there, which I am prepared to prove. My nearest now cleans nearly the same quantity and it is only \$4.00. The Improved Manitoba, my best, 14 shirt size, is \$10; 20 shirt size, in two compartments, only \$14; 24 shirt size, \$18; Wringer, \$2; \$5.00 and \$5.50. All good. T. McROSSAN, 226 Hannay's St., Winnipeg.

P. D. ROE, President.

R. ABERNETHY, Vice-President.

T. F. PATERSON, Sec.-Treas.

## The Canadian Pacific Lumber Company Limited

Manufacturers of and Wholesale  
Dealers in All Classes of  
British Columbian

**LUMBER, LATH,  
SHINGLES,  
MOULDINGS, Etc.**

MANAGER

PORT MOODY, B.C.

CAPACITY: LUMBER—60,000 feet per Day; LATH—20,000; SHINGLES—120,000.

We have the largest dry kiln capacity of any mill in B.C., also the largest amount of sheds, and these are well stocked with Manitoba lumber. We have seven planers and are prepared to ship promptly. We understand the requirements of Manitoba dealers. Send to us for your next car. HENRY BYRNES, Selling Agent, Winnipeg.



Established 110 Years.

# Hartford

Fire Insurance  
Company of Hartford,  
Conn.

Assets:

**\$12,259,076**

Reinsurance  
Reserve:

**\$6,798,504**

W. W. SCRIMES,

Supt. Winnipeg.

Agents wanted in unrepresented districts.

## CLARE BROS. & CO.

Stoves and  
Furnaces

Metal Roofing and Siding

Steel Embossed Ceiling

Eavetrough and Conductor Pipe

Graniteware and Tinware

## CLARE & BROCKEST

Managers.

WESTERN BRANCH, WINNIPEG, MAN.

## 45,000 TREES

20,000 Petrofsky Russian Poplar.  
10,000 Wobstii Russian Poplar.  
5,000 Russian Golden Willow.  
5,000 Russian Laurel Willow.  
5,000 French Laurel Willow.

We are offering the above quality of beautiful young trees, well rooted, about two feet high, for fall and spring delivery, besides a good stock of small fruits, flowering shrubs, Virginia Creeper, etc. This is the largest and finest lot of Russian stock ever offered in the west. Send for descriptive price list to

CALDWELL & CO.

Virden Nurseries. VIRDEN, MAN.

## Kola Tonic Wine



Made from  
Kola, Celery  
and Pepsin

The Kola nut is grown in the Western Territories of Africa, and is not likely to remain much longer in obscurity, if the properties, which of good authority it is said to possess are found to be as stated from information communicated to the Pfg. Agricultural Association, by Sir Thos. H. Thurston and Mr. Thos. Christy, F. C. S., who have proven that Kola feeds the muscular system and prevents a rapid waste of tissues. The British Government have been making experiments with the pure paste of the Kola nut in order to ascertain how far it would meet the difficulty of transporting provisions in time of war as a concentrated sustainer of human life. Mr. Christy strongly advises planters to grow it more extensively, as its use when its properties become better known, the usefulness of Kola in hot climates when water frequently contains the germs of various diseases, should be great, as a small quantity added purifies and changes foul water that would be dangerous to drink unless it were first boiled or treated in this way.

Dr. Nachtigall, from personal experience, gives some interesting information regarding Kola. He states it has a marvellous effect when taken into the human system; it is agreeable, stimulating and nourishing. In some places where Kola happens to be scarce, such value is set upon it that for the dry powder of the nut an equal weight of gold dust is given in exchange. This wonderful nut has risen into such request as a medicine that for the public good the authorities are investigating its many properties, and there is a satisfaction in knowing the same is being done in this country and elsewhere, and evidence has been already collected to prove that Kola has an extraordinary influence in counteracting the effects of alcohol, and that it acts as a powerful Tonic in cases where the digestive organs are defective; that it purifies foul water, and that it sustains hard workers with very little food.

The Kola Tree grows to a height of 20 or 30 feet; two crops are obtained in the year; in June and November. Medical men prescribe the Kola before meals to people who have reason to feel anxious about the state of their Liver and Kidneys. As a Medicine, Kola will undoubtedly take an important place in the future. It seems admirably suited to the case of Invalids who require something strengthening without having an appetite or taste food.

Kola Tonic Wine is manufactured from Kola, Celery and Pepsin, and in this combination the Hygiene Kola Co. have accomplished a scientific triumph, because it has been proven that not only diseases of almost every kind give way to its health giving properties, but it puts the system into such a condition of perfect healthfulness that it is a practical proof against all diseases. Indigestion, Dyspepsia, Asthma, Rheumatism, and all nervous troubles can be cured by using Kola Tonic Wine; thousands have been cured when all other remedies have failed. To enjoy good health keep your stomach right and the use of Kola Tonic Wine will do that. Physicians all state that Kola, Celery and Pepsin is the best combination of any remedy ever offered for sale.

Beware of imitations; see that our address is printed on each bottle. Sold by all the leading druggists in Canada and the United States.

## HYGIENE KOLA COMPANY

84 Church Street, Toronto.

206 Pacific Avenue, Winnipeg

Sole proprietors for the Dominion of Canada.

## LEADING COMMERCIAL HOTELS

WINNIPEG

HOTEL LELAND.

Headquarters for commercial men.  
CITY HALL SQUARE.

DRYDEN, ONT.

DRYDEN HOTEL.

A. R. HUTCHINSON, Prop.  
Headquarters for commercial and mining men and the general public.

RAPID CITY.

QUEEN'S HOTEL.

THOS. EVOY, Prop.  
Headquarters for commercial travellers. Free bus meets all trains.

BIRTLÉ

ROSSIN HOUSE.

B. FENWICK, Prop.  
Good accommodation; telephone connection with the station; sample rooms; inside closet. Livery in connection.

TREHERNE

LELAND HOTEL.

W. F. LEE, Prop.  
First-class accommodation for commercial travellers.

GLENBORO

QUEEN'S HOTEL.

M. E. NEVINS, Prop.  
Best hotel on the Glenboro branch. Three large and first-class sample rooms.

NAPINKA

HOTEL LELAND.

B. HALLONQUIST, Prop.  
First-class in every department. Sample rooms. Every convenience for the travelling public. Opposite C. P. R. depot.

DELORAINÉ

PALACE HOTEL.

LAIRD & MCGARVEY, Props.  
New building, new furnishings, furnace heating, acetylene gas. First-class large sample rooms.

MACGREGOR, MAN.

THE STANLEY HOUSE.

E. WATSON, Prop.  
First-class accommodation for travellers. Commodious sample rooms. Livery and feed stable in connection. All kinds of teaming attended to.

ELKHORN

HOTEL MANITOBA.

W. J. DIXON, Prop.  
New building, new furnishings, furnace heating, acetylene gas. First-class large sample rooms.

FLEMING

WINDSOR HOTEL.

W. GEO. CLEVERLY, Prop.  
New management. Rates \$15. Renovated and re-furnished. Commodious sample rooms. Heated by hot air. Livery and feed stable in connection. Inside closet.

ROTHBURN

OCCIDENTAL HOTEL.

H. A. McEWEN, Prop.  
New house. Up-to-date appointments

RED DEER, ALTA.

ALBERTA HOTEL.

BEATTY & BRINDLE, Props.  
C. and E. dining hall, good sample rooms and every accommodation for commercial travellers and the general public.

WETASKIWIN, ALTA.

CRITERION HOTEL.

F. M. HAMILTON, Proprietor  
New buildings, new furnishings, hot and cold bath, heated by furnace and lighted with gas, good sample rooms.

STRATHCONA

STRATHCONA HOUSE.

W. H. SHEPPARD, Prop.  
First-class. Opposite depot.

EDMONTON

ALBERTA HOTEL.

JACKSON & GRIERSON, Proprietors  
Sample rooms. Free bus. Livery in connection.

MACLEOD

MACLEOD HOTEL.

THOS. WILTON, Prop.  
Good sample rooms and every accommodation for commercial travellers and the general public. Rates \$2.00 per day. Bus and to and from all trains.

PINCHER CREEK

HOTEL ARLINGTON.

MITCHELL & DOBBIE, Props.  
New buildings, new and commodious parlors, bathrooms and sample rooms. Newly furnished. Heated throughout by hot air; lighted by gas. Electric bells in every room. Clubs sent to home; and the best stock of liquors, cigars and cigars in Alberta. Miss Mitchell, Matron.

NEW WESTMINSTER, B. C.

HOTEL COLONIAL.

J. E. INSLY, Proprietor  
Special attention given to commercial travellers. Charges moderate.

VANCOUVER

HOTEL LELAND.

R. DOWSWELL, Proprietor  
Refurnished and remodelled. Rates \$1.50 to \$2.00 per day. Long distance phone. One block from C. P. R. depot and steamboat wharves. W. E. Grogan, Manager.

VICTORIA

HOTEL VERNON.

JAS. PATTERSON, Mer.  
Headquarters for commercial and business men. Free bus and sample rooms accommodation.

KAMLOOPS

GRAND PACIFIC HOTEL.

P. A. BARNHART, Proprietor  
The best hotel in Kamloops and accommodation.

GREENWICH, B. C.

IMPERIAL HOTEL.

GRAHAM & PARRY, Proprietors  
Headquarters for commercial travellers and all business men.

PHOENIX, B. C.

THE VICTORIA HOTEL.

B. C. Hotel Co., Ltd., B. TOMKINS, Mer.  
Electric bells, electric light, furnace heated, finest liquors and cigars. Sample rooms.



**CANADIAN PACIFIC**

**The Quickest  
And Best Route  
TO THE  
EAST & WEST**

Train leaves for the East at 10.00  
Train leaves for the West at 10.30

**THROUGH CARS TO  
Toronto, Montreal,  
Vancouver, Seattle.**

Passengers comfort assured in  
through Tourist Cars to

**TORONTO  
MONTREAL  
BOSTON  
VANCOUVER  
SEATTLE**

Rates quoted for Tourists to  
CALIFORNIA, CHINA, JAPAN,  
around the World.

For full particulars apply at City  
Office, opposite Post Office, or at  
the Depot.

**C. E. McPHERSON,**  
Gen. Pass. Agt. Winnipeg.

**WANTED**

Local agents or travelling salesmen for  
Manitoba and the Territories, to handle  
a complete line or nursery stock, fruit  
trees, ornamental trees, seed potatoes,  
small fruits, etc. We grow special lines  
of hardy Russian stock, adapted to cold  
districts. Sample catalog, etc., supplied  
free. For terms apply now.

**PELHAM NURSERY COMPANY,**  
Toronto, Ont.  
N. B.—Special inducements to farmers  
who can only work part time at the busi-  
ness. Handmade catalogue free on applica-  
tion, which gives valuable information  
concerning ornamental and fruit stock.  
P. N. Co.

**EVERYTHING IN**

**BROOMS  
BRUSHES  
BASKETS**

From the cheapest that's good to the  
best that's made.

**WALTER WOODS & CO**

WHOLESALE WOODENWARE.

147 Bannatyne Ave., Winnipeg.



**THROUGH TICKETS  
TO ALL PORTS.  
EAST, SOUTH AND WEST  
CHEAP TICKETS TO CALIFORNIA**  
With through Tourist Car, every Wednes-  
day, via Portland and Shasta route.

**OCEAN TICKETS.**  
On sale to Great Britain and the Conti-  
nent; also to Adelaide, ports, etc.  
Trains leave Winnipeg daily at 1.45 p.  
m., from Canadian Northern Railway sta-  
tion. Water street first-class equipment,  
including Pullman and Dining Cars.  
For further information call on nearest  
Canadian Northern Ticket Agent, or write  
**CHAS. S. FISK,**  
Gen. Pass. & Ticket Agt. St. Paul,  
Minn., or—  
**H. SWINFORD,**  
Gen. Agt., 393 Main Street, Winnipeg.

**ATLANTIC STEAMSHIP LINES.**

Allen Line—From St. John.  
London ..... March 22  
Portland ..... March 29  
Allen Line—From Halifax.  
London ..... March 22  
Portland ..... March 31  
Beaver Line—From St. John.  
Lake Superior ..... April 4  
Lakes Ontario ..... April 11  
Dominion Line—From Boston.  
Huron ..... March 22  
New England ..... April 12  
White Star Line—From New York.  
Cymric ..... March 25  
Toucan ..... March 28  
Oceanic ..... April 2  
Cunard Line—From New York.  
Campania ..... March 29  
Imbria ..... April 5  
Cunard Line—From Boston.  
Ilorona ..... March 29  
Liverpool ..... April 4  
Dominion Line—From Portland.  
California ..... April 12  
American Line—From New York.  
Philadelphia ..... March 26  
St. Paul ..... April 2  
Red Star Line—From New York.  
Haverford ..... March 26  
Friesland ..... April 2  
Anchor Line—From New York.  
Paros ..... March 29  
Astoria ..... April 12

**RATES:** Cabin, \$50, \$55, \$60, \$70, \$80 and  
upwards. Second Cabin, \$25, \$27.50, \$30  
and upwards. Steerage, \$14.50, \$20.50, \$25.  
Passengers ticketed through to all points  
in Great Britain and Ireland, and at spe-  
cially low rates to all parts of the Euro-  
pean continent. Prepaid passage arranged  
from all points. Apply to the nearest  
steamship or railway ticket agent, or to  
**W. P. F. CUMMINGS, General Agent,**  
Winnipeg, Man.

Mrs. Schoppen—"What's the price of  
this silk?"  
The Salesman—"The price is 48  
cents, madam, which you may admit  
is quite decollete."  
Mrs. Schoppen—"Decollete?"  
The Salesman—"Yes, madam. Cut  
low."

**W. C. MACDONALD, Actuary. J. K. MACDONALD, Managing Director.**

*The Confederation  
Life Association*

There are no conditions as to residence, travel or occupation in the Uncon-  
ditional Accumulative Policies issued by this Association. They guaran-  
tee extended Insurance, Paid-up Policies, and Cash Surrender values.

Manitoba, N. W. T. and B. C.—Winnipeg Office, 467 Main Street.  
**CHARLES E. KERR, Sec.-Treasurer. DANIEL McDONALD, Manager.**  
**HENRY WORSLEY, City Agent.**

Brandon Office ..... **F. W. GILL, Cashier.**



**THERE'S MONEY IN IT!  
SHIP YOUR  
FURS  
HIDES DEERSKINS  
AND SENECA  
TO  
McMILLAN FUR & WOOL CO.  
MINNEAPOLIS, MINN.  
High Prices. Prompt Returns.  
WRITE FOR PRICE CIRCULARS.**

**Hotel  
Leland**

*The Palace Family  
and Commercial Hotel*

**W. D. DOUGLAS  
MANAGER**

City Hall Square, **Winnipeg**

**RATES:  
\$2.00 to \$4.00  
PER DAY**

**SECOND TO NOTHING  
IN CANADA**

**MOYIE LUMBER COMPANY**

Manufacturers and Dealers in

**LUMBER LATH SHINGLES  
MOULDINGS  
CEDAR POSTS AND POLES**

DRY KILN AND PLANERS IN CONNECTION

**SAMUEL GRANT, Manager**

**MOYIE, B.C.**

**SEVEN PAPER MACHINES NOW RUNNING**

We are therefore ready to book orders for

**News, Tissues,  
Heavy Wrappings**

Writings, Litho, Nos. 1, 2 and  
3 Book, Bristol Board,  
Cover Papers and  
Woodboard

**THE E. B. EDDY CO. LIMITED**

Hull, Montreal, Toronto, Quebec, Ottawa, Hamilton,  
Kingston, London, St. John, N.B., Halifax, Winnipeg, Victoria, Vancouver

**T & B**  
PLUS  
AND  
CUT  
TOBACCO

Try the new fours. They are giving us  
true satisfaction. Pays the retailer a  
handsome profit.

**THE GEO. E. TUCKETT & SON CO., LTD  
HAMILTON.**

**TEES & PERRISE, Agents, Winnipeg.**

# Have You Bought

Your Wagons,  
Toy Carts,  
Velocipedes,  
Baby Carriages

We have a big assortment of these in stock. We are also carrying a large range of Hammocks. Catalogue, with best prices on application.

We have just received a large range of Coronation Tablets, Exercise and Scribbling Books and Paperies. These are right up-to-date and you should have some.

**CLARK BROS. & CO. P. O. BOX 1240 WINNIPEG**

## THE IMPERIAL

WHOLESALE FRUIT AND PRODUCE CO.

We handle all kinds of green fruits and are prepared to fill your orders for same promptly.

We also buy or handle on commission everything in the way of country produce at highest cash prices and lowest rates of commission.

Settlements made promptly.

330 Elgin Avenue, Winnipeg.

THE EVER INCREASING DEMAND FOR

# COCKSHUTT PLOWS

has necessitated larger manufacturing facilities from year to year.

We are now pleased to announce that during the present season extensive additions will be made to our Factory and Plant, and that our present facilities will be increased by 100 per cent.

HAVE YOU SECURED THE AGENCY FOR THE CELEBRATED COCKSHUTT PLOWS?

If so, you are assured of the Spring Plow Trade in your Territory.

**COCKSHUTT PLOW COMPANY, LTD., WINNIPEG**

Factory: BRANTFORD

*To those who have not been getting*

# OGILVIE'S ROLLED OATS

*We would suggest your Insisting on getting  
OGILVIE'S—and no other.*

*They are the best ever made, being so pronounced by all who  
are using them. Made from selected white oats.*

**DELICIOUS FLAVOR**

**FREE FROM HULLS**

# Grain Tickets

AND OTHER STATIONERY.

**SEND FOR SAMPLES**

**THE FRANKLIN PRESS Ltd. Opp. Grain Exchange, Winnipeg**

### "REFINED ALE"

(Which Sparkles Like Champagne)

### "EXTRA STOUT"

and

### "REDWOOD LAGER"

Are what the people are using.

#### WHY?

BECAUSE they are always marketed PRIME CONDITION.

BECAUSE THEY ARE THOROUGHLY MATURED in wood.

BECAUSE all ingredients are PURE.

BECAUSE THE UTMOST CLEAN-NESS is observed in every process of manufacture.

Order from your wholesale dealer or direct from Redwood factories, Winnipeg.

**E. L. DREWRY** Manufacturer and Importer, Winnipeg.

## SADLER & HAWORTH

Tanners and Manufacturers of

## Oak Leather Belting

Montreal and Toronto.

JOHN A. CARRUTHERS, Selling Agent, 120 King Street, Winnipeg, Manitoba.

## WM. FERGUSON

WHOLESALE

 Wines, Liquor and Cigars

814 STREET. BRANDON

## IMPORTANT . .

My travellers are now on the road with Spring and Fall Samples.

It will be to the interest of Merchants to defer buying until they see my Samples.

## THOS. CLEARHURST

BRACKVILLE, ONT.