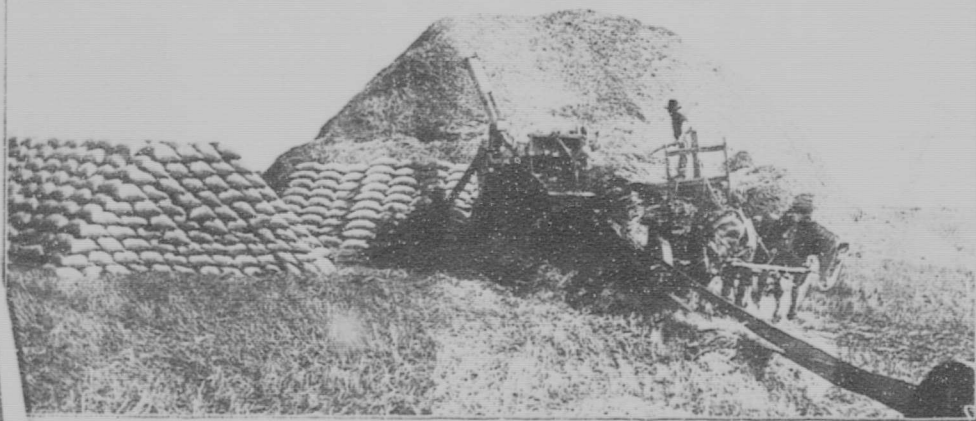


SPAN
9531

The
Prolific Delta

Where and What It Is

1913



A COMMON SCENE IN AUTUMN

Published Under the Auspices of

The Delta Board of Trade

The Prolific Delta

*Where and
What It Is*

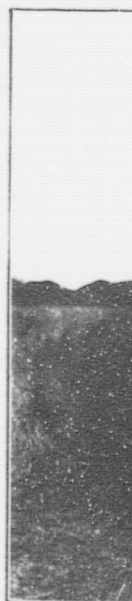


*Published by
The Delta
Board of Trade*



N

THE





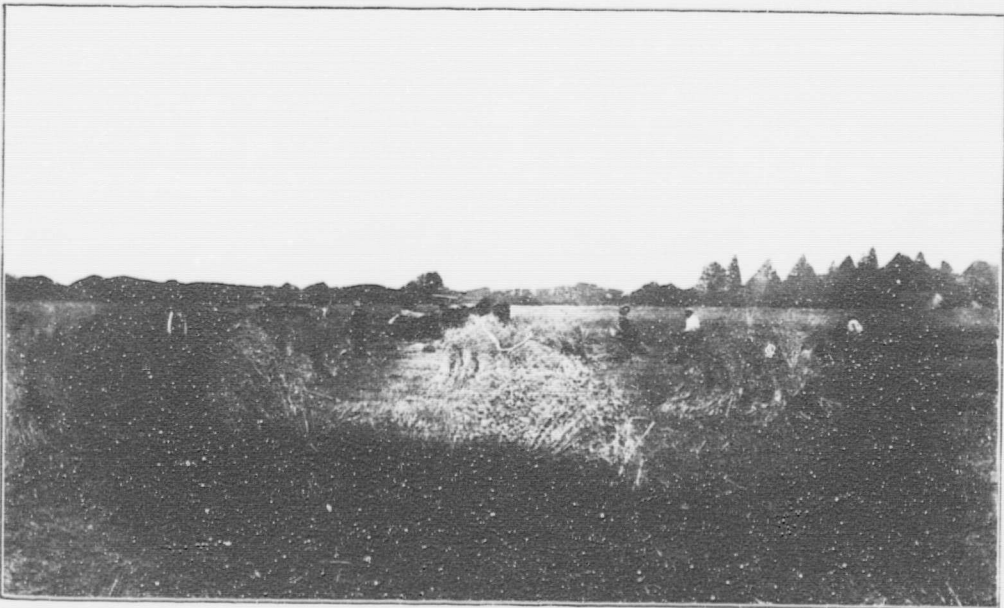
A Few Facts in a Few Words

Regarding the

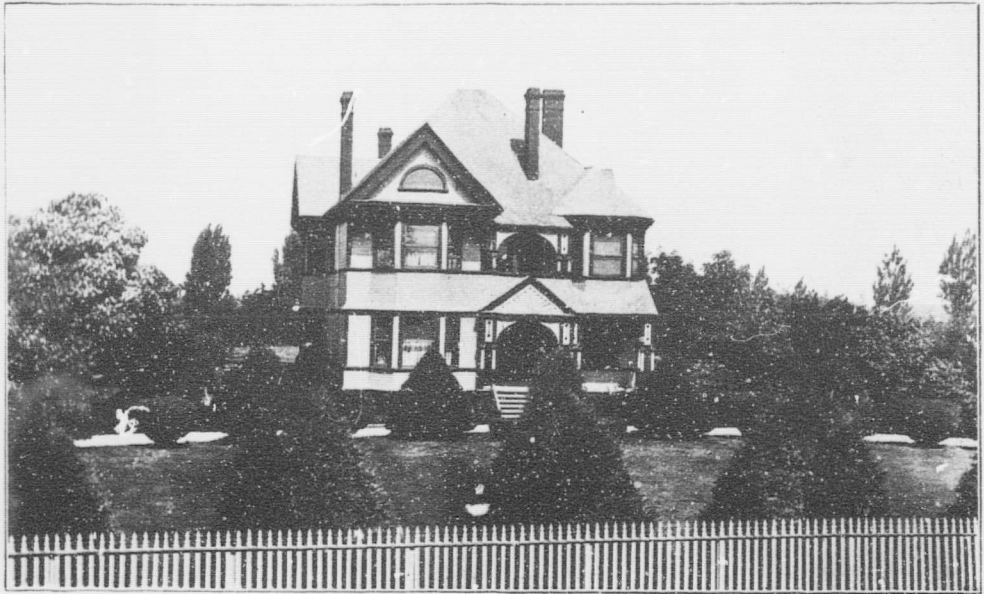
Municipality of Delta, B. C.

THE DELTA MUNICIPALITY

is a level tract of country composed of silt, deposited by the mighty River Fraser on whose south bank it lies, and constitutes the most southerly and western portion of the Mainland of British Columbia. In area it contains about 40,000 acres of land that will, with skill and industry, give the most satisfactory returns. So low-lying is this territory that it was found necessary some twenty years ago to inclose it in a strong dyke to resist the waters of the river and sea, since when it has never known a state of flood, (as it did previously), and the perfect system of drainage now practiced has brought the land to the very highest state of perfection from an Agricultural point of view.



A Delta Harvest Scene



T. E. Ladner's Farm Home

THE EARLY SETTLEMENT

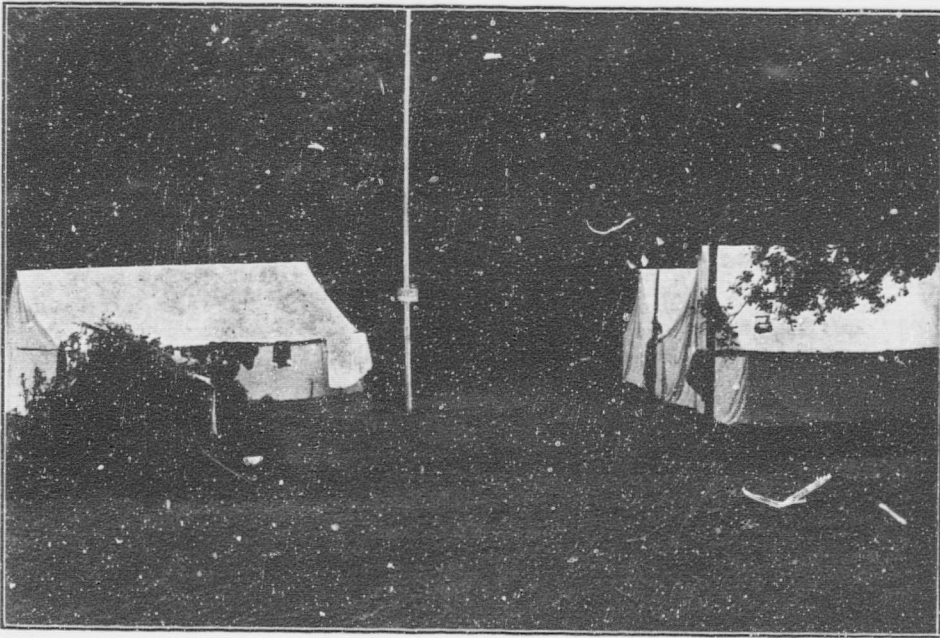
of the district dates back to about the same time that the Cariboo gold rush was exciting the minds of many, but of those who used the Fraser River as a means of reaching the mines, few took notice of the low-lying and at that time marshy tract of land on the south bank of the river, or for a moment dreamt that it would in a comparatively short space of time become one of the Garden districts of Canada. To those few who did, and whose names are today household words in all parts of British Columbia, is due to a great extent the thanks of those who now can boast of living in an Agricultural district second to none in wealth or fertility, and which it is the intention in these few pages to briefly review in picture and print for the benefit of the general public.



A Common Scene in Autumn

THE CLIMATE

is one of the most equitable in the world, the summer temperature never being too hot for comfort, nor the winters colder than those usual in the Southwestern Counties of England; it, in fact, very nearly approximates that experienced in those parts. The rainfall is not so great as that in districts nearer the mountains, and snow seldom stays long enough for the use of sleighs. The prevailing winds are southeast and northwesterly, the former generally being accompanied by rain and the latter by fine, dry, bracing weather.



A Boundary Bay Camp

THE CROPS

raised principally are Oats of the very best milling quality; Hay, usually a mixture of Timothy and Alsike Clover; Potatoes, for which the district is famous, together with Mangolds and Turnips for the stock-raiser and dairyman; large quantities of garden truck of all the well-known varieties are also grown. The ever increasing demand for sweet cream and milk by the neighbouring cities of Vancouver and New Westminster tends to a steady business the year round. Poultry and eggs are always in good demand and any attention paid to this branch of farming is well repaid. Draft horses raised in large numbers in the district command a ready sale in Vancouver at prices running into four figures, the demand being always in excess of the supply.



The Farm Home of R. E. Kittson

THE FLORA AND FAUNA

embrace all those common to a temperate and rather humid climate, the snowdrop, as in England, heralds the spring, and the succession of summer flowers are much the same, all hardy and semi-hardy annuals doing well and few of the well known shrubs and trees are never winter killed nor need any protection. Bird life is similar to that found in all parts of Northern America, and wild animals of any kind are practically unknown with the exception of a few deer from the timbered lands adjacent to the district.



1500 Sheep on the Grauer Farm



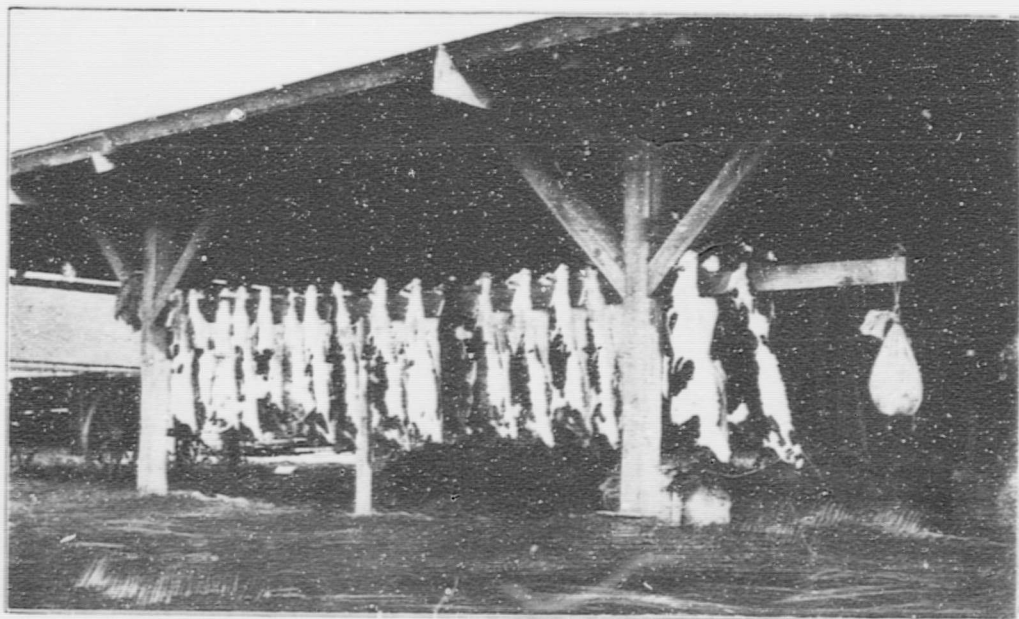
Barns on the Burns' Ranch

LAND VALUES

No boom has ever affected the land values of this district and the prevailing prices, ranging from \$350.00 to \$600.00 per acre, according to local facilities, represents the intrinsic value of the soil and its capabilities. A study of the following table, keeping in mind the area of the district described, will not only reveal the secret of the price but will also justify it.



Guichon Dairy Cattle



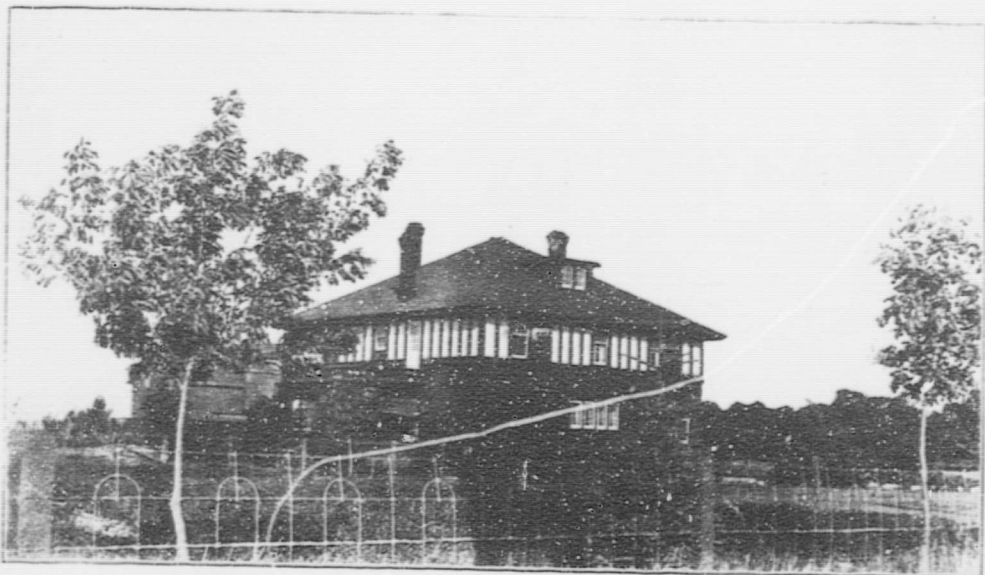
Veal Ready for Market

CROP REPORT FOR YEAR 1911

Hay, 20,000 tons.....	\$ 400,000.00
Grain, 12,500 tons.....	375,000.00
Potatoes and Roots, 7,000 tons.....	150,000.00
Milk, 60,000 cans.....	120,000.00
Eggs, 2,000 cases.....	16,000.00
Cattle, Sheep, Hogs—150 cars.....	180,000.00
Horses.....	100,000.00
Miscellaneous.....	9,000.00
	\$1,350,000.00



Manager's Residence on the 6000-Acre Burns Ranch



Residence of D. A. McKee

DOMESTIC ANIMALS

of all kinds thrive and the district is noted for the number of prize-winning stock of all kinds that it produces.



Harry Burrs' Farm Home



Threshing Scene in Delta

THE GAME BIRDS

consist of the pheasant, which, imported some years ago, now give splendid sport during the shooting season; the English partridge, a more recent arrival, but multiplying fast under protection; the Canada Crow and Brant goose inhabit the waters and marshes of the rivers and bays, and all kinds of duck common to this hemisphere are numerous, as are also snipe and some of the smaller game birds.



An East Delta Homestead



On the Sands, Boundary Bay

IN BOUNDARY BAY WE HAVE

A Summer Resort and Bathing Beach second to none on the Pacific Coast, and is destined to become very popular with the residents of the nearby cities and visitors to the Coast during the Summer months, and when the cold winds of Winter bring in the wild fowl for shelter the sportsman will find this an ideal spot to furnish food for his gun.

—

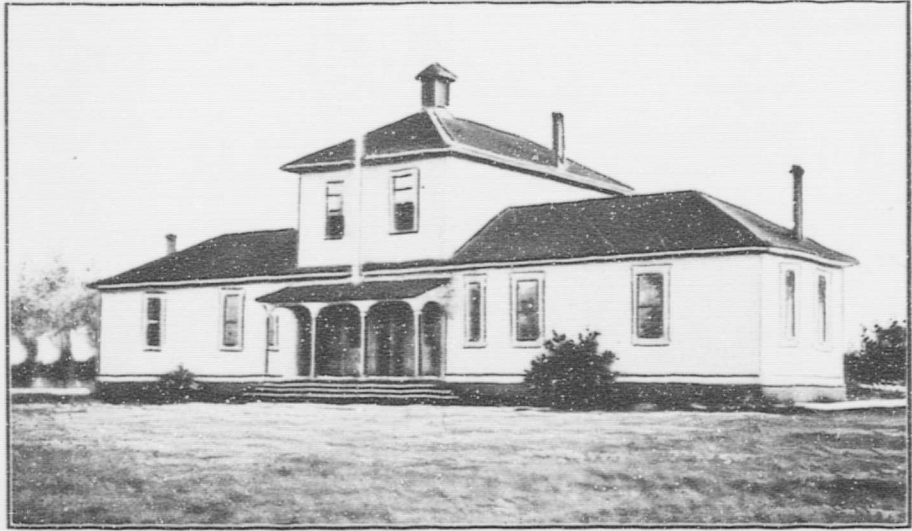
THE VILLAGE OF LADNER

The centre of the trade of Delta Municipality, is prettily situated, and its numerous business houses, together with its comfortable residences standing in spacious grounds with every kind of convenience known to the city dweller, carries out the scheme of harmony and happiness everywhere found on the Delta; and, as if further to testify to the prosperity of every one, the large wharves and warehouses lining the banks of the river, during shipping season are constantly being filled by scores of splendid teams with immense loads. The streets of the village are built of rock, as are nearly all the roads in the Municipality, and the Council see to it that they are always in first-class condition to allow of heavy traffic during the Winter months when the crop is being marketed.

—

PORT GUICHON

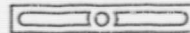
—tributary to and adjoining Ladner—is the Terminus of the Great Northern Railway branch line that serves the district, and has it wharves also and an hotel and store.



Ladner Public School

TRANSPORTATION

facilities are good, both by water and rail, and it is expected in the near future that even these will be much better. At present passenger traffic is by way of ferry to Steveston, and B. C. Electric Railway three times daily in each direction; by Great Northern Railway and river steamers to New Westminster and Vancouver once daily. Freight is handled by train (Great Northern Railway) which runs through the heart of the district, with spur stations every mile for the convenience of the farmers loading cars, and by boat from the various wharves along the river. It is expected that shortly a line will be built to connect with the present Fraser Valley line (B. C. Electric Railway) through the centre of the district; and also another direct to Vancouver across Lulu Island to connect with ferry at Woodward's, which will very materially assist in the quick transportation of perishable freight.



INDUSTRIAL SITES

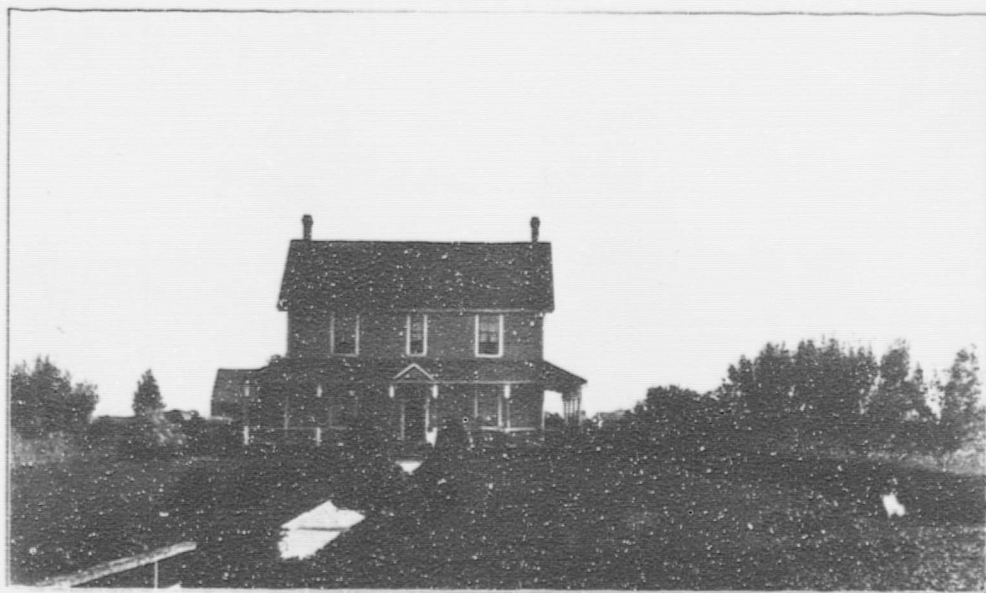
abound on the banks of the Fraser River and without doubt this will in time become a hive of industry, although at present salmon canning and saw mills are the only ones represented. The advantage of fresh water cannot be too strongly emphasized when one considers the saving in dry-docking for boats, and the fact that the Torredo worm cannot live, and thus the piling for wharves and piers is given a much longer life.



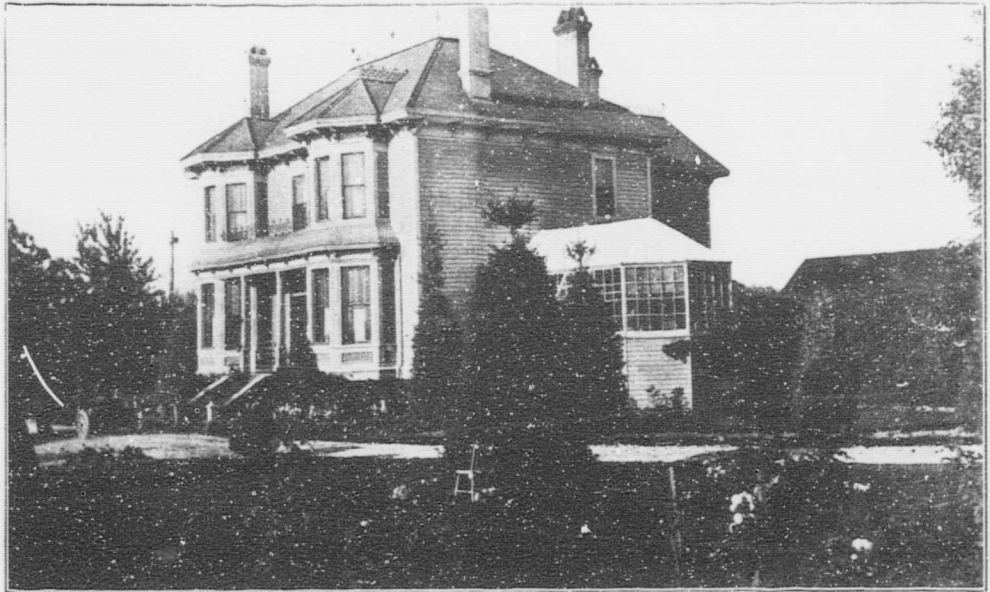
W. A. Kirkland's Modern Farm Home

SOCIAL LIFE

is one of its strong points, all the best known fraternal societies are represented, the churches all have their guilds and societies which are well supported. The district boasts a Lacrosse League of three teams, who play many friendly games during the Spring and Summer. A fine public hall takes care of the many socials, concerts, and balls, held during the Winter. The musical element have a choral society and orchestra to enliven the Winter evenings, and the Farmers' Institute holds lectures and socials to bring all in close touch. The Agricultural Society holds its annual fair early in the Fall, and the Delta Park Driving Association have on the Agricultural grounds one of the best half-mile tracks in B.C.; an Athletic Association trains the youth of the district in the "manly art" and other exercises.



John Weaver's Home

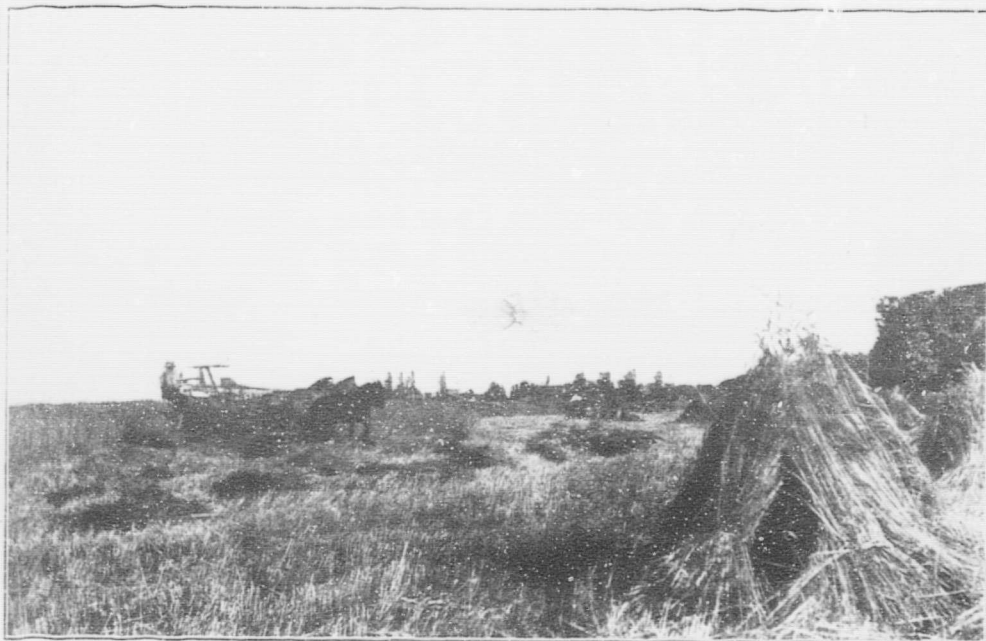


Jubilee Farm—Owned by Mrs. Thos. McNeely

GENERAL UTILITIES

are well provided for throughout the district. A good and permanent supply of water being furnished to every house and field for the use of man and beast. Electric light and power is available on many of the trunk roads as well as in the village of Ladner. Long distance phones connect the district with the outside and the Farmers' phone system makes it possible for all to be in touch with one another and the outside also. The Postal Service is good, there being two deliveries in and two out daily at the main office at Ladner and the country offices, at various points in the municipality, have an adequate service. The School System is possibly the best organized of any in B.C. All the buildings are modern and sanitary; the country is well served, no scholar having more than one and one-half miles to go to school. A site has been secured and a High School is now being erected in the village of Ladner. The Religious life of the community is well looked after by four resident and several visiting clergy, the following denominations having substantial churches in the district: Anglican, Presbyterian (2), Methodist, Baptist, Roman Catholic and Lutheran.





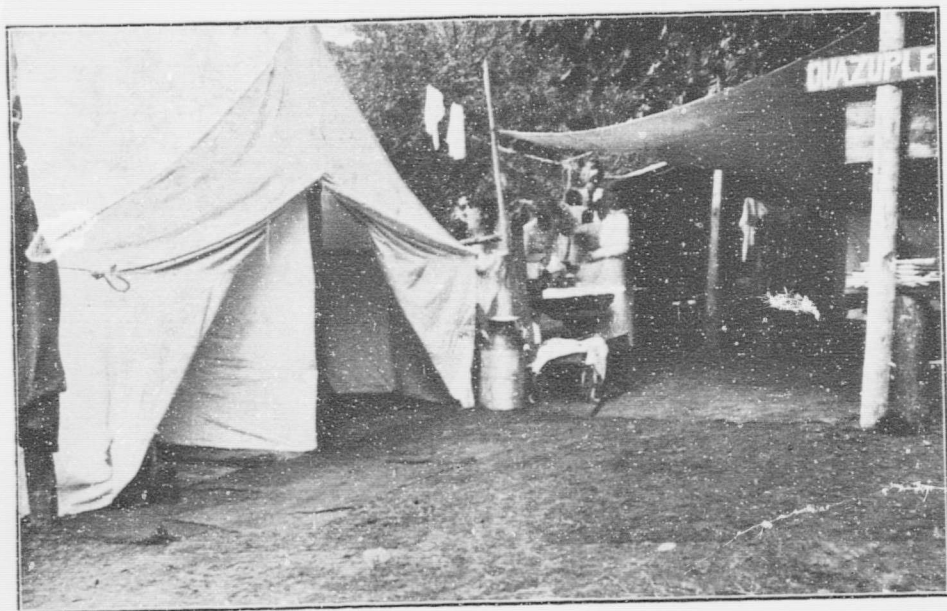
Cutting

THE DELTA COUNCIL

—consisting of a Reeve and five Councillors—form the governing body and are justly proud of the road system, which is of rock and gravel throughout the municipality, the strength of the dykes, the water system, and many other large undertakings. We may add that the road system is second to none in Canada.



Threshing



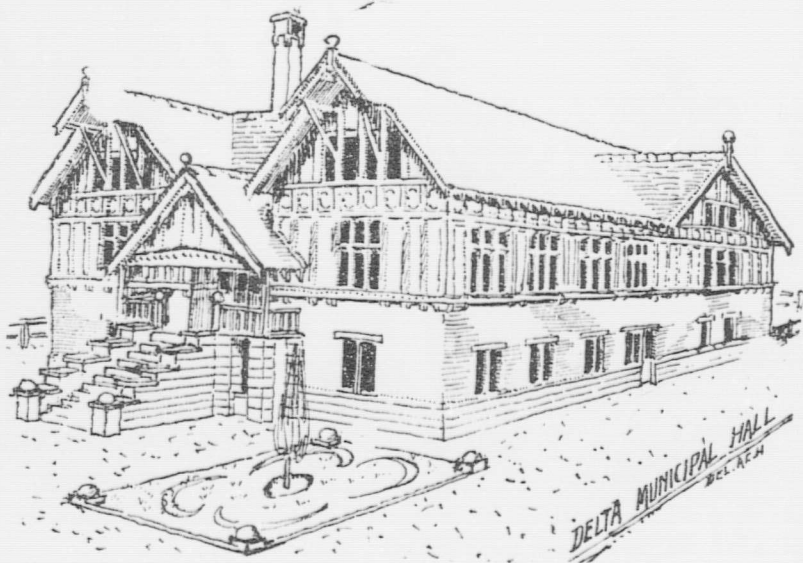
"Duazuplease"—Camping Scene

THE DELTA BOARD OF TRADE

composed of the leading and progressive Farmers and Business men of the community, under whose auspices these facts are compiled, vouch for the truth of all statements herein made, and through the Chairman of its Publicity Committee or its Secretary will be pleased to furnish any further information desired, or to answer any questions. The sole aim of this publication is to answer in a straightforward manner the numerous enquiries received by our Board and to give some idea of the beauties and richness of the Garden of British Columbia.



Over 2500 Sacks Ready for Market



Delta Municipal Hall

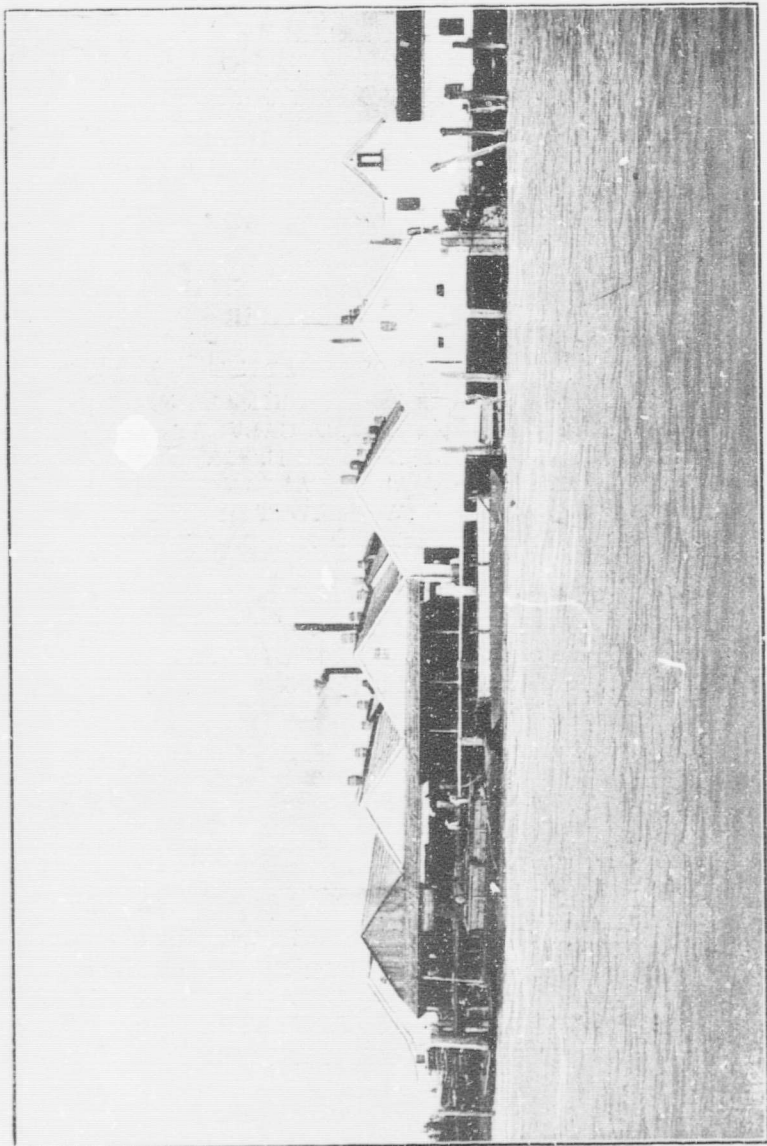


The Guichon Homestead



The Stillwell Trophy

Presented at Madison Square Gardens, New York, for the best exhibit of potatoes grown in America, and won by British Columbia. Delta Municipality furnishing 20 per cent. of the exhibit.



One of the Many Salmon Canneries Situated in the Delta

DIRECTORY OF PUBLIC BODIES

ETC., ETC.

DELTA COUNCIL

Reeve: H. D. BENSON

Councillors: W. A. KIRKLAND, CHRIS. BROWN, A. D.
PATERSON, H. LEWIS, GEO. DENNIS

Clerk of Council: N. A. McDIARMID

DELTA BOARD OF TRADE

President: T. E. LADNER

Secretary-Treasurer: W. J. LANNING

Vice-President: S. W. FISHER

CHAIRMEN OF COMMITTEES

Commerce and Industries: H. J. KIRKLAND

Publicity and Finance: E. T. CALVERT

Legislation: H. J. HUTCHERSON

Membership: JAS. McCALLAN

Navigation: G. W. BREWSTER

Agriculture, Roads and Bridges: A. J. PARMITER

OFFICERS OF SCHOOL BOARD

Chairman: SMITH WRIGHT

Secretary-Treasurer: N. A. McDIARMID

Trustees: A. de R. TAYLOR, THOS. ROBERTSON,
JAS. McCALLAN, W. R. ELLIS

RESIDENT CLERGY

Anglican: REV. C. C. HOYLE

Presbyterian: REV. J. J. HASTIE

Methodist: REV. W. WHITTAKER

Baptist: REV. C. R. BLUNDEN

POSTMASTER LADNER MAIN OFFICE

A. de R. TAYLOR

DELTA TELEPHONE CO. LTD.

President: DR. J. KERR WILSON

Secretary-Treasurer: A. de R. TAYLOR

DELTA AGRICULTURAL SOCIETY

President: H. J. HUTCHERSON

Secretary: A. de R. TAYLOR

Treasurer: H. M. RICH

DELTA FARMERS' INSTITUTE

President: THOS. HUME

Secretary-Treasurer: N. A. McDIARMID

DIRECTORY OF PUBLIC BODIES

ETC. ETC.

—*—

DELTA PARK DRIVING ASSOCIATION

President: F. J. GREEN
Secretary-Treasurer: WM. FRASER

DELTA GAME PROTECTIVE ASSOCIATION

President: W. A. KIRKLAND
Secretary-Treasurer: A. de R. TAYLOR

LADNER GUN CLUB

President: H. J. HUTCHERSON
Secretary-Treasurer: W. H. WILSON

LADNER ATHLETIC CLUB

President: E. F. DOUGLAS
Secretary: F. GUICHON
Treasurer: H. A. McDONALD

LOWER FRASER LACROSSE LEAGUE

President: CHAS. H. TRIM
Secretary-Treasurer: W. H. SMITH

Teams

Beavers—

President: J. GUICHON
Secretary-Treasurer: H. A. McDONALD
Captain: F. GUICHON

Shamrocks—

President: C. BROWN
Secretary-Treasurer: L. DENNIS
Captain: R. KITTSO

Maple Leaves—

President: S. SAVAGE
Secretary-Treasurer: C. H. TRIM
Captain: L. TAMBOLINE

FRATERNAL AND OTHER SOCIETIES

Independent Order of Oddfellows

Benevolent, Protective and Independent Order of Lions

Canadian Order of Foresters

Loyal Orange Lodge

Woodmen of the World

United Workmen

Population (estimated): 4000

The BIG STORE

We carry the largest and best
assorted stock of

General Merchandise

South of the Fraser

Dry Goods Men's Furnishings
Boots and Shoes Clothing
Hats and Caps Trunks and Valises
Stationery and Fancy Goods



A Few of Our Leaders

Stanfield's Underwear, H. B. K. Working
Shirts and Gloves, Stetson Hats, Campbell's
Clothing, Astoria Shoes, Young & Rochester
Fine Shirts, Carhartt Overalls, Monarch
===== Sweater Coats =====

THE STORE THAT MADE LADNER FAMOUS

Lanning, Fawcett & Wilson
LIMITED

The BIG STORE

Headquarters for all Farming Requisites

and Everything Necessary to Furnish the Home

INTENDING NEW SETTLERS will find it will pay to buy all their Furniture and Farming Outfit here. We save you the freight and our prices are as low as anywhere in Canada.

Furniture and House Furnishings, Linoleums and Oilcloths, Wall Papers, Curtains and Draperies

Hardware, Paints and Oils, Stoves and Ranges, American Bale Ties, Bicycles and Sewing Machines

GROCERIES—We carry the largest and best assorted stock of Groceries in the District.

Crockery, China, Fancy China of all kinds.

Lanning, Fawcett & Wilson
LIMITED

The Store to Put Your Faith In

If you appreciate Shoes of character, refinement and good taste, you will enjoy seeing your feet in the elegant styles we are now showing. No one who has not seen these Shoes and tried them on can begin to realize, from mere description, how unusual, how pleasing, how really satisfactory they are.

We are always ready with a welcome for the person who comes to see our Shoes for the first time, and if you have never worn our Shoes, we especially bid you to come see and try on. We do not urge you to buy here, but we do strive to show you such attractive styles and excellent qualities, at prices so low as to make buying here appeal to you as the best thing for your interests.

It is our aim first of all to create permanent customers—not one-time purchasers. We believe we can best do that by giving our trade maximum values and satisfaction.

We are confident that our shoes will satisfy you or any person who wants the best at reasonable prices. We know that right now is a good time for you to put our claims to the test.

J. REAGH,
THE SHOE MAN
LADNER, B.C.

When Are
You Coming?

The Best of Cuisine

First Class Rooms

Ladner Hotel

The "Auto" Headquarters



The Best Attention
Paid to Guests

Ladner, B.C.

PEOPLE are coming to the conclusion more and more every day that a

TAILOR-MADE SUIT

is the only suit to give entire satisfaction in Style, Fit and Durability. ☞ Let us execute your next order and prove the fact to you. ☞ We have a good range of Serges, Vicunas and Tweeds to select from, and our Prices are moderate.



HOWARD BROS.

Tailors and Designers

Ladner, B.C.



The Royal Bank of Canada

ESTABLISHED 1869

Capital Authorized	- - - - -	\$ 25,000,000
Capital Paid-up	- - - - -	11,500,000
Reserve and Undivided Profits	- - - - -	12,500,000
Total Assets	- - - - -	175,000,000

Head Office, MONTREAL

THIS Bank, with its Branches at every important point in Canada and Correspondents throughout the commercial world, offers exceptional facilities for the transaction of every description of Banking business.

It is the aim of the management of this Branch to make every depositor welcome and give the best possible attention to his financial affairs.

LONDON, England

2 Bank Bldgs, Princes St., E.C.

NEW YORK CITY

Cor. William and Cedar Streets

H. F. BISHOP, Manager

LADNER, B.C.

Not only

The Best
British Columbia Farm Lands
But the
Best Farm Lands in Canada

DELTA
FARM LANDS

That is our Specialty



Ladner Investment & Trust Corporation

LIMITED

Authorized Capital \$250,000.00

REAL ESTATE LOANS INSURANCE

LADNER, B.C.

THE
People's Meat Market

Our DELIVERY SERVICE Covers the WHOLE DELTA

The only Modern and Up-to-date
Meat Market in
DELTA

Cold Storage and Refrigerator Plant

We Specialize in
the following Lines :-



All kinds of
Fresh Meats,
Poultry
Fish (Smoked and Fresh)
Butter (Local and Imported)

Swift's Lard, Bacon and Hams



SMITH BROS.

PROPRIETORS

INVERHOIM

INVERHOLM STOCK FARMS

Hon. Thos. W. Paterson,
Proprietor

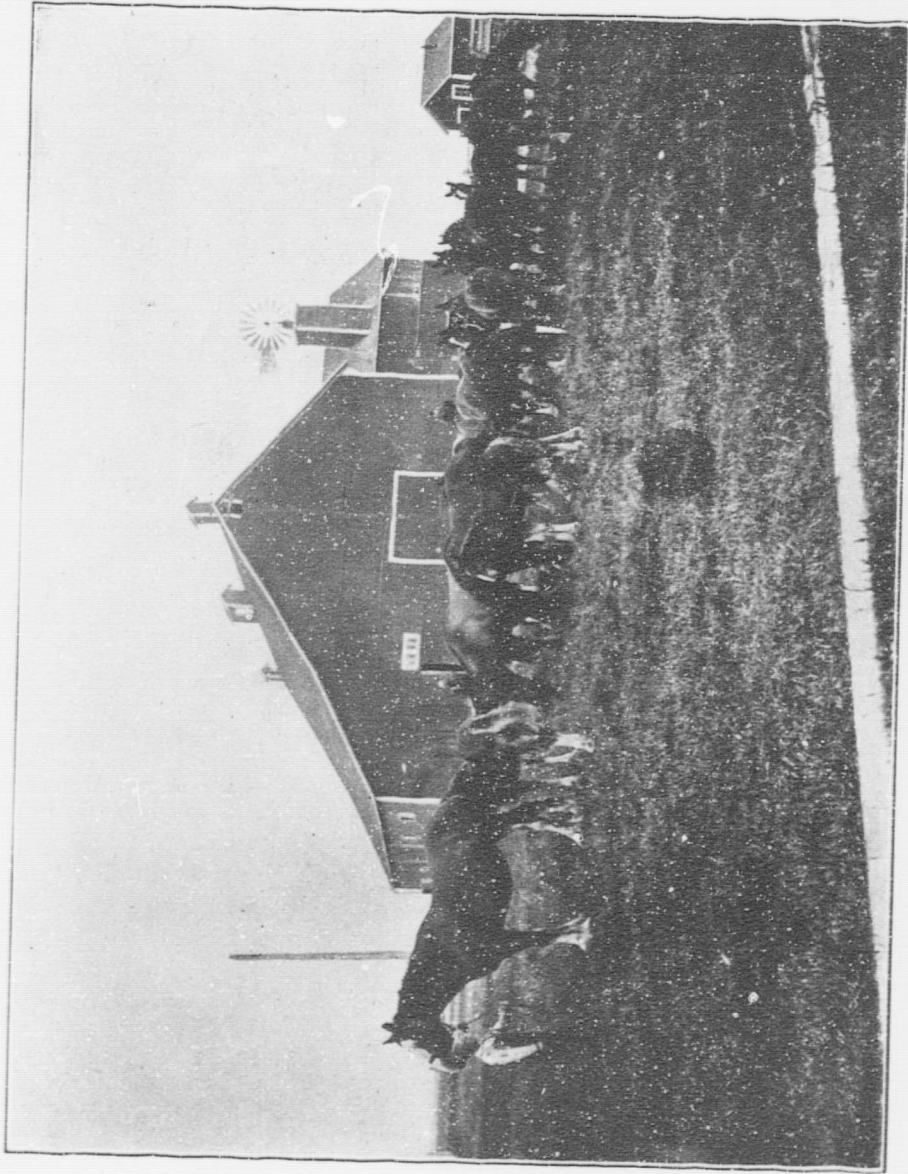
Breeders and
Importers of
Clydesdale Horses
Shorthorn Cattle
and
Shropshire Sheep



Well Matched Heavy
Draft Teams Always
in Stock



A. D. Paterson • Manager
LADNER, B.C.



Fisher's Drug and Book Store

S. W. FISHER, PHM. B.
PROPRIETOR

General News

— and —

Book Agency

Large Stock on Hand

Any Magazine or
Book Not on Hand
Gladly Procured

Confectionery

Tobaccos and

Cigars



LOCAL VIEWS
POST CARDS

Toilet Articles

Drug
Sundries

Brushes, Novelties and
a Full Line of
NA-DRU-CO
and NYALL.
PREPARATIONS

PRESCRIPTIONS ACCURATELY FILLED AT ANY HOUR--Night Bell

We Shall be Glad to SERVE You in Any Way

WATCHES, JEWELRY, SILVER AND ELECTRO PLATE
of Every Description. 14kt., 18kt. and Guinea Gold Wedding Rings

REPAIRS, MOUNTING, ENGRAVING

M. L. & B. H. Weare

JEWELLERS -- LADNER, B.C.



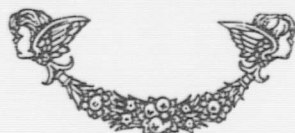
Chime, Regulator, Fancy and 400-day CLOCKS. Rich CUT GLASS
Goods not in Stock Procured on the Shortest Possible Notice

When in Ladner
Stop at the

Delta Hotel

J. JOHNSTON, Proprietor

LADNER, B. C.



All Modern Conveniences

Hot and Cold Water Baths

Electric Lighted Well Heated

==== Newly Furnished ====

Sample Room in Connection

Only the Best Wines, Liquors and Cigars

Hotel situated at Steamer Landing

PHONE No. 2



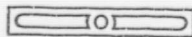
The
Delta Meat Market

A. N. YORK, Proprietor

THE PLACE for
Quality, Quantity and Fair Prices



A Full Line of
Fresh Meats,
Lard, Hams and Bacon
Always in Stock



PHONE 21, Ladner

Our Delivery is Prompt

We Invite Your Custom

WALTER'S THE WHITE STORE

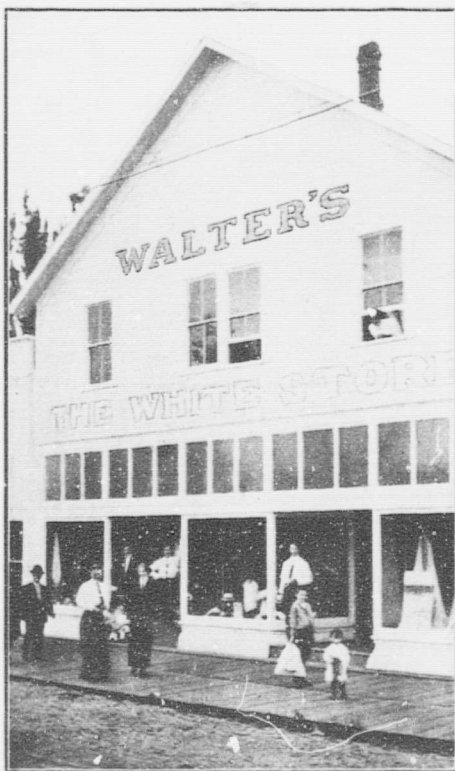
Lander's Leading Dry Goods and Clothing House

GROCERIES

FLOUR and FEED



Ladies'
Ready-
to-Wear
Suits,
Coats,
Skirts,
Dresses,
and
Under-
wear



Mens'
and
Boys'
Clothing
the Style-
Craft
kind, the
kind you
can't put
out of
shape no
matter
how hard
you wear
them



DEALERS IN

Staple and Fancy Dry Goods, Dress Goods, Silks and
Trimmings, Men's Furnishings. A full line of
Men's, Women's and Children's Shoes.
House Furnishings, Linoleums, Oil
Cloths, Lace Curtains, Fancy
Muslins, Art Draperies
and Portieres

S. W. WALTER

PROPRIETOR

Westham St.

Phone 39

LADNER, B.C.



H. N. RICH

LADNER
B. C.



FALL AND WINTER SCHEDULE

**Ladner-Steveston
Ferry**

Commencing **SUNDAY, SEPTEMBER, 1st, 1912**

SS. "New Delta"

CAPTAIN C. W. BREWSTER, Owner

Leaves Ladner Daily at 8.00 a.m. and 3.30 p.m. for Steveston

Returning—Leaves Steveston at 9.30 a.m. and 4.30 p.m. (or on arrival of Cars)

Take 8.30 a.m. and 3.30 p.m. Cars from Vancouver to connect.

This Time Table is subject to change without notice



Commencing April 1st, a Three Trip Service will be in effect, of which notice will be duly given.

This will give passengers a chance to see the Fishing Fleet of the noted Fraser

**QUICKEST ROUTE TO
WESTHAM ISLAND, PORT GUICHON AND LADNER**



High School, Ladner, B.C.



One of the Fine Residences in the Delta Municipality

NEWS-ADVERTISER
Printers
Vancouver - B. C.

