

X-3
ANNUAL REPORT

OF THE

INSPECTOR

OF THE

Public Schools

OF THE

CITY OF TORONTO,

FOR THE

YEAR ENDING DECEMBER 31, 1876.

Submitted to the Board, January 17, 1877.

Toronto:

T. HILL & SON, CAXTON PRESS, COR. KING AND JARVIS STS.

1877.



ANNUAL REPORT

OF THE

INSPECTOR

OF THE



OF THE

CITY OF TORONTO,

FOR THE

YEAR ENDING DECEMBER 31, 1876.

Submitted to the Board, January 17, 1877.

Toronto:

T. HILL & SON, CAXTON PRESS, COR. KING AND JARVIS STS.

1877.

B.S.
1877
67
QC
CCDD

THOMAS J. BROWN

Public Schools

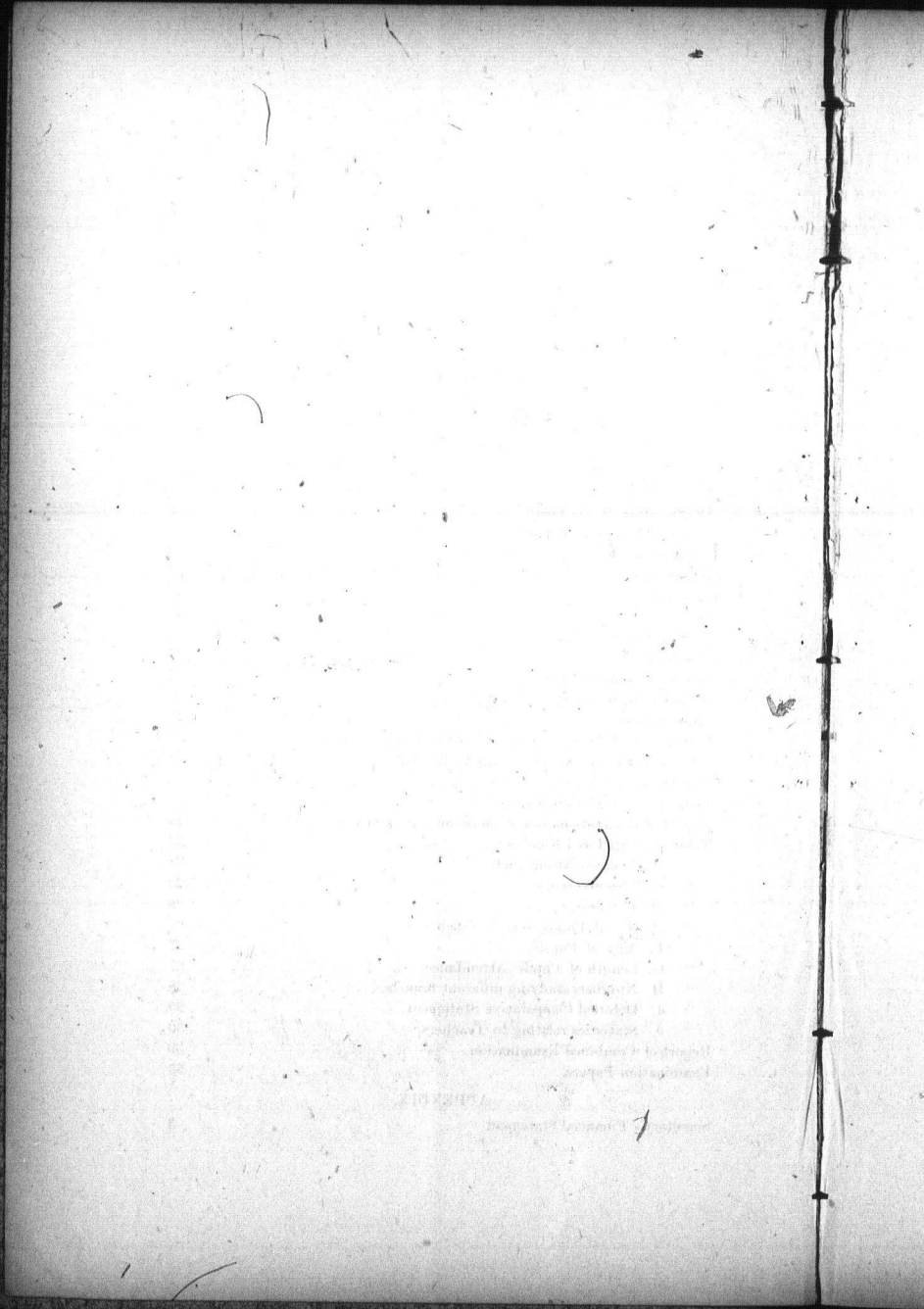
CITY OF BOSTON

THE NEW ENGLAND BOOK CONCERN

INDEX.

—:—

	Page.
List of Trustees,	5
Organization of the Board,	6
Inspector's Annual Report,	9
Attendance,	9
Absenteeism,	11
Lateness	11
Order,	11
Certificates of Honour,	12
Teachers,	12
School Accommodation,	12
School Furniture and Apparatus,	13
Examinations,	13
Standing of different Schools at the Combined Examination,	13
Scholarship Pupils at the Collegiate Institute,	14
Jesse Ketchum Prizes,	16
Progress of the Public Schools,	17
Report of the Distributors of the Jesse Ketchum Prizes,	17
Table A, Registered Numbers,	23
" B, Average Attendance,	24
" C, Absenteeism,	25
" D, Lateness,	26
" E, No. of Pupils to each Teacher,	27
" F, Ages of Pupils,	27
" G, Length of Pupils' Attendance,	27
" H, Numbers studying different branches,	28
" I, Detailed Comparative Statement,	29
" J, Statistics relating to Teachers,	30
Report of Combined Examination,	39
Examination Papers,	53
APPENDIX.	
Secretary's Financial Statement,	3



Public School Board.

1876.

Ward of St. Lawrence.

	Term expires.
JAMES BURNS, Esq.	Dec. 1876.
THOMAS DAVISON, Esq.	Dec. 1877.

Ward of St. David.

EDWARD GALLEY, Esq.	Dec. 1876.
E. P. RODEN, Esq.	Dec. 1877.

Ward of St. Thomas.

ALFRED DREDGE, Esq.	Dec. 1876.
P. G. DeGRASSI, Esq., M.D.	Dec. 1877.

Ward of St. James.

JAMES BAIN, Esq.	Dec. 1876.
WALTER S. LEE, Esq.	Dec. 1877.

Ward of St. John.

WILLIAM ADAMSON, Esq.	Dec. 1876.
JOHN KENT, Esq.	Dec. 1877.

Ward of St. Andrew.

GEORGE WRIGHT, Esq., M.A., M.B.	Dec. 1876.
JAMES SLOAN, Esq.	Dec. 1877.

Ward of St. George.

GEORGE McMURRICH, Esq.	Dec. 1876.
W. CAMPBELL, Esq.	Dec. 1877.

Ward of St. Patrick.

FREDERICK UNITT, Esq.,	Dec. 1876.
W. W. OGDEN, Esq., M.D.	Dec. 1877.

Ward of St. Stephen.

FOLLIS JOHNSTON, Esq.	Dec. 1876.
JOHN WINCHESTER, Esq.	Dec. 1877.

Organization of the Board.

Chairman.

W. W. OGDEN, Esq., M.D.

Standing Committees.

I.—On Finance, Assessment and Salaries.

MESSRS. LEE, DAVISON, AND WINCHESTER.

II.—On School Management.

DR. WRIGHT, AND MESSRS. CAMPBELL, BAIN, BURNS, AND
ADAMSON.

III.—On Sites and Buildings.

MESSRS. GALLEY, KENT, RODEN, AND UNITT.

IV.—On Supplies.

MESSRS. DREDGE, LEE, AND JOHNSTON.

V.—On Industrial Schools.

MESSRS. SLOAN AND McMURRICH, AND DR. DEGRASSI.

Officers of the Board.

SCHOOL INSPECTOR,	- - -	JAMES HUGHES, Esq.
SECRETARY,	- - -	W. C. WILKINSON, Esq.
SOLICITOR,	- - -	W. B. McMURRICH, Esq., M.A.
TRUANT OFFICER,	- - -	JOHN T. THOMPSON, Esq.
AUDITOR,	- - -	WILLIAM ANDERSON, Esq.

Inspector's Annual Report.

Inspector's Journal Report

Inspector's Annual Report.

To the Board of Public School Trustees of the City of Toronto :

GENTLEMEN,

In accordance with a resolution of your honourable Board, I respectfully submit the Eighteenth Annual Report of the Schools under your charge.

Appended to the Report will be found Statistical Tables which give in detail all important particulars relating to teachers, pupils, attendance, absenteeism, tardiness, studies pursued, cost of maintenance, &c.

ATTENDANCE.

The total number of pupils registered during the year was 9,799.

The average daily attendance was 5,976. Last year it was only 5,386.

547 pupils attended school less than 20 days.

1079	"	"	between 20 and 50 days.
2069	"	"	" 50 " 100 "
1715	"	"	" 100 " 150 "
2541	"	"	" 150 " 200 "
1848	"	"	" 200 " 213 "

These numbers show that the attendance of the pupils in our schools is rapidly becoming more regular. To make this perfectly clear it is only necessary to compare the statistics of the past three years in this connection.

	1874.	1875.	1876.
Present less than 20 days in the year	1,216	794	547
“ “ “ 50 “ “	3,236	2,122	1,626
“ more “ 200 “ “	654	889	1,848

It will thus be seen that, while those who attended less than twenty days have been *reduced in number more than one-half*, those who attended more than two hundred days have been *increased nearly three-fold*.

To show that the average attendance has been much improved during the year, it is only necessary to state that the Average Daily attendance increased from 5,386 in 1875, to 5,976 in 1876 although the total number Registered in 1876 was only 132 more than in 1875.

The most correct idea of the relation of the Average to the Registered attendance is obtained by comparing the average of Monthly Averages with the average of Monthly Registered numbers.

The average of Monthly Registered Numbers was 6,912. This shows an increase compared with last year of 435. (See Table A.)

The average of Monthly Average Numbers was 5,919. This shows an increase of 522, when compared with the corresponding number of last year. (See Table B.)

The Average of Monthly Averages was 86.3 per cent. of the average of Monthly Registered Numbers. It was 83.4 last year, and 80.8 in 1874.

The best average for any month of the year was 88.8, the average for December.

The worst average was 84, the average for February.

ABSENTEEISM.

Steady and decided progress continues to be made in checking this greatest of evils in our schools. The number of days lost by absence in 1876 was 32,990 less than in 1875, and 86,117 less than in 1874. These numbers do not, however, show the actual improvement made, as the number of pupils in attendance in 1876 was much larger than in 1875 or 1874, and consequently the number of absentees should be proportionately greater. The most correct idea of the improvement made can be obtained by comparing the number of days lost each year by each pupil, taking the average attendance as the basis of calculation. The numbers of days thus lost were as follows:—

1874.....	57 days.
1875.....	40 days.
1876.....	31 days.

It will thus be seen that in two years the number of days lost by each pupil in actual attendance has been reduced nearly one-half. Notwithstanding this encouraging change, however, Absenteeism is still one of the greatest obstacles in the way of the general advancement of the pupils of our schools, and it will require persistent and united effort on the part of all parties concerned to reduce it to reasonable limits. (See Table C.)

LATENESS.

The improvement in the *punctuality* was even greater than in the *regularity of attendance*. There were 26,976 less cases of tardiness in 1876 than in 1875. The number of lates per day in 1875 was 314; in 1876 it was 180. *This shows an improvement of 134 cases per day.* (See Table D.)

ORDER.

I am pleased to be able to report a marked improvement in the order and general deportment of the pupils in attendance at our

schools. This has been accompanied, or rather *preceded*, by a great reduction in the amount of corporal punishment inflicted by the Teachers.

CERTIFICATES OF HONOR.

The improvement made in Regularity, Punctuality, and Good Conduct, was shown clearly by the largely increased number of Certificates of Honor received by the pupils. The number granted in 1875 was 1,754; this was increased in 1876 to 2,265.

TEACHERS.

There were 94 teachers in the employ of the Board at the close of the year. Twenty-seven others were appointed in November, to commence duty in January, 1877. This makes 121 teachers at present on the staff, exclusive of the special teachers in Music and Drawing. There are 22 male and 99 female teachers employed. They hold certificates as follows :

First Class Provincial	45
First Class County Board	19
Second Class Provincial	57

SCHOOL ACCOMODATION.

A very large increase was made during the year in the amount of school accomodation. The Wellesley and Givins Street Schools were enlarged ; the former by the addition of eight rooms, and the latter by the addition of two rooms. Besides these, the Ryerson and Dufferin Schools, each containing twelve rooms, were erected. The new buildings are a credit to the city, as Public Buildings. Great care was taken in their erection to have them thoroughly ventilated, and fitted up in accordance with the modern improvements in School Architecture. The internal arrangements, blackboards, cloak rooms, assembly rooms, &c., are very complete and convenient.

SCHOOL FURNITURE AND APPARATUS.

During the year, 700 single, and 1,300 double desks have been procured for use in our schools.

Besides the very fine black-boards in the new schools, 215 square yards of composition black-boards were placed on the walls of the old schools during the year.

There are still a large number of children in the Junior Classes without desks. As they do not use copy books, I would recommend, that they be supplied with Double Cornell Settees, instead of desks, as they are cheaper, and equally convenient for those who do not write in books.

EXAMINATIONS.

Three *written* Examinations were held during the year; the Combined Examination and two Promotion Examinations. The Examiners for the Combined Examination were Rev. J. M. King, M.A., Rev. A. H. Munro, Rev. I. Tovell, and A. McMurchy, Esq., M.A. The lists of Scholarships and Prizes awarded will be found in the Report of the Examiners. The comparative standing of the different schools in the various departments of study, will be found below by comparing the marks obtained at the Combined Examinations.

FIRST DIVISIONS.

SCHOOLS AND DIVISIONS.	Mathematics.	Grammar & Derivation.	History and Geography.	Reading & Spelling.	Writing & Book-keeping.	TOTAL.
Victoria Street, Boys,	2747	2686	2193	2021	1654	11,301
“ “ Girls	2461	2505	1932	1952	1396	10,246
John “ Boys	1823	2337	1943	1973	1354	9,430
Phoebe “ Girls	1909	2343	1504	1913	1428	9,097
Park “	1437	2155	1739	1996	1352	8,679

SECOND DIVISIONS.

SCHOOLS AND DIVISIONS.	Arithmetic.	Grammar.	History and Geography.	Reading & Spelling.	Writing.	TOTAL.
Louisa Street, Boys	697	2254	1204	2070	905	7130
Victoria " "	509	2094	1757	1924	665	6949
" " Girls	561	1545	1860	1759	630	6355
Phoebe " "	505	1846	1885	1630	370	6236
George " "	408	1648	1494	1797	320	5667
John " "	256	1329	1201	1929	685	5400
Louisa " "	309	1618	1172	1473	335	4907
Phoebe " Boys	329	1628	708	1642	630	4937
John " "	216	848	748	1785	760	4357
George " "	367	1172	829	1499	475	4342
Park " "	229	441	542	1526	515	3253

The results of the Examinations for promotion were more satisfactory than in the previous year. The answering was better, and there was a *uniformity* of excellence in the different schools which was highly gratifying.

There were two Public Examinations, as usual, during the year.

SCHOLARSHIP PUPILS AT THE COLLEGIATE INSTITUTE.

It is to be regretted, that so few of our pupils continue their scholastic course at the Collegiate Institute, after leaving the Public Schools. It is cheering, however, to know that those who have gone from our schools to the Collegiate Institute succeed well in competition with others. Below is given a list of the honors taken during the year 1876 by the Scholarship Pupils from the Public Schools. It is worthy of mention that the Intermediate Examination papers are, in the future, to be the same as those for Second Class Teachers' certificates. This will give some idea of their difficulty.

SCHOLARSHIP PUPILS WHO PASSED THE
"INTERMEDIATE EXAMINATION."

ANNIE DAVIDSON.	DAVID BURNS.
ELIZA C. STURROCK.	ROBERT DONALD.
AMY FELL.	EDWARD HAGARTY.
EMILY STOW.	ARTHUR WEBB.

STANDING AT MIDSUMMER EXAMINATION.

HENRY WRIGHT.—V Form—2nd in English.

ROBERT DONALD.—III Form—Form Prize, and 1st in Mathematics.

WM. MILLIGAN.—III Form—2nd in English, and 1st in Classics.

JAS. CARLYLE.—L. II Form—2nd in English, Form Prize, and 1st in Classics.

ARTHUR WEBB.—III. Form—3rd in English.

J. W. HUGHES.—1st in Book-keeping.

HENRY BODDY.—1st in Drawing.

ANNIE DAVIDSON (Seniors).—Form Prize, 1st in Mathematics, 1st in Latin and Grammar, and 2nd in English.

ELIZA C. STURROCK (Seniors).—1st in English, and 2nd in Book-keeping.

REBECCA CHURCH (Seniors).—1st in Latin and French.

HENRIETTA LAIDLAW (Juniors).—1st in English.

JENNIE MILNE (Juniors) 1st in Book-keeping.

STANDING AT CHRISTMAS EXAMINATIONS.

EDWARD HAGARTY.—III Form—1st in Classics, 1st in French, 2nd in English, and 2nd in Mathematics.

ROBERT DONALD.—III Form—1st in Mathematics, 3rd in English, and 3rd in Classics.

ARTHUR WEBB.—IV Form—2nd in English, and 4th in French.

J. WESLEY HUGHES.—III Form—3rd in Mathematics.

FRED. PASSMORE.—2nd in German.

WM. NICHOL.—II Form, Senior—3rd in English, and 6th in Latin.

JAS. CARLISLE.—II Form, Senior—3rd in Latin.

Andrew BAIN.—II Form, Junior—4th in English, 5th in Mathematics, and 10th in Latin.

ELIZA C. STURROCK.—Senior Form—1st in English, 1st in Mathematics, 1st in French, 1st in German, 1st in Latin, 1st in Drawing, and 2nd in Chemistry.

REBECCA CHURCH.—Senior Form—2nd in Latin, 3rd in English, 3rd in French, and 4th in Mathematics.

AMY FELL.—Senior Form—2nd in Mathematics, 4th in English, and 4th in French.

EMILY STOW.—Senior Form—3rd in Mathematics, 4th in English, 5th in French, and 2nd in German.

JENNIE MILNE.—Senior Form—1st in Chemistry, 2nd in French, and 6th in English.

JENNIE NASMITH.—Senior Form—2nd in French, and 7th in English.

ELIZA BALMER.—Senior Form, Class B.—1st in Mathematics, 3rd in French, and 7th in Drawing.

SARAH LOUDON.—Senior Form, Class B.—2nd in Mathematics, and 2nd in Chemistry.

MAGGIE SHEPPARD.—Senior Form, Class B.—1st in French, 4th in Mathematics, and 4th in Chemistry.

JESSIE SEMPLE.—6th in Drawing.

JESSE KETCHUM PRIZES.

The bequest of the late Jesse Ketchum, Esq., was distributed in prizes to the pupils of the various schools on the 15th and 16th of June, by J. G. Hodgins, Esq., LL.D., A. T. McCord, Esq., and John Gillespie, Esq.

These prizes (366 in number) were given to the pupils in each class, who had the best record during the whole session for Regularity, Punctuality, Good Conduct, and Diligence in the preparation of lessons. One-half the amount distributed was expended in

Bibles, and the other in works carefully selected from the books published by the Religious Tract Society.

The report of the gentlemen who distributed the prizes may be found on this page

PROGRESS OF THE PUBLIC SCHOOLS.

Table I gives a comparative statement of various items relating to the Schools since 1844. It will be seen by reference to it, that the increase in the attendance at our Schools has been very rapid.

In 1856 the Average Registered No. was 2318, the Daily Attendance, 1747					
“ 1866	“	“	“	3139,	“ “ 2399
“ 1876	“	“	“	6912,	“ “ 5976

The Registered and Average Attendance have thus been more than doubled during the past ten years.

Respectfully submitted.

JAMES HUGHES,

Public School Inspector.

Toronto, January 17, 1877.

TO THE BOARD OF PUBLIC SCHOOL TRUSTEES OF THE CITY OF TORONTO.

GENTLEMEN,

Having been appointed by the Directors of the U. C. Bible and Tract Societies, to discharge the duty of distributing the Jesse Ketchum Bequest among the most deserving Pupils of the Schools of Toronto, we cannot, at the conclusion of our labours, refrain from expressing to the Board the heartfelt pleasure which we experienced in visiting these Schools. The generally excellent condition of the School Rooms, the air of neatness and comfort which prevailed, the order and discipline which were everywhere apparent, and the bright and cheerful groups of children which were gathered in the larger School Rooms to meet us, rendered the duty which we feared would be fatiguing, if not monotonous, to be delightful and instructive.

We devoted two entire days to visit the eighteen Schools, which are situated in different parts of the city and suburbs, and under the control of the Board. In them all, though under so many different teachers, we noticed the same spirit of subordination and state of efficiency, &c., as that to which we have referred.

Many incidents of a pleasing character occurred during our visits; and many suggestive facts came under our notice during these two days, which isolated visits to Public Schools would never have brought out. We had the rare advantage, which a systematic and continuous visit to the whole of the Schools at once gave us, of comparing one School with the other; of noting the general condition of each of the Schools; the effect of the prevalence or absence of order and discipline in the daily life of the School; the tone and *esprit* of the pupils; the character of the influence which the teacher exercised in the School; and the effect of that aesthetic culture (even of an elementary character,) which it is to be regretted is not always regarded as an essential part of school training, even by otherwise efficient teachers. We noted, therefore, with the more pleasure, evidence of its existence in the Schools generally, as indicated by the personal neatness and taste of the scholars; the presence of flowers in the School Rooms, either in pots or in bouquets; of mottoes, and other pleasing decorations; of musical skill, and by the marked exhibition of courtesy and politeness on the part of the pupils on our visit to their School Rooms. This was the more observable in the girls' departments.

During our visit, we took occasion not only to address a few brief words of counsel to the pupils generally, so as to impress upon their minds the necessity for the practice of those sterling virtues of punctuality, diligence and good conduct, which the prizes were designed to stimulate and reward; but we sought to make the presentation the occasion of a direct practical application, in the case of each individual recipient, by an additional word of advice and encouragement.

We were favoured with the presence of individual trustees in many of the Schools. We cannot, however, speak too highly of the admirable arrangements made by Mr. Hughes, the indefatigable Inspector, by which we were enabled to carry out the programme of distribution with punctuality and satisfaction to ourselves.

Taking a brief, yet comprehensive view of the Schools, as we did, and of the extensive machinery and appliances for popular education now available in Toronto, we cannot but be deeply impressed with the immense power for good which these Schools possess. Though costing less than the police force, it is to them, under the blessing of God, we must look for a potent means of the prevention of crime in our midst. By their establishment and maintenance, hundreds of children, which would otherwise be left to the demoralizing education of the street, and brought up as city arabs, are carefully trained in the elements of useful knowledge, and brought continuously under a wholesome discipline, and a humanizing and elevating influence of a powerful character.

Our two days' visit to the Public Schools so impressed us with their excellence and value to the City, that we have felt ourselves impelled thus to express to the Board of Trustees our views and impressions on the subject.

We have the honour to be,

Gentlemen,

Very truly and sincerely yours,

J. GEORGE HODGINS,

Hon. Secretary, U. C. Bible Society.

A. T. McCORD, } *Members of the U. C. Bible*
JOHN GILLESPIE, } *and Tract Society.*

Toronto, 17th June, 1876.

Faint, illegible text, possibly bleed-through from the reverse side of the page. The text is arranged in several paragraphs and is mostly obscured by noise and low contrast.

Statistical & Reference Tables.

Historical & Geographical

TABLE A.
Showing the Registered Number of Pupils in each School for each Month.

SCHOOLS.	JAN.	FEB.	MAR.	APRIL	MAY.	JUNE.	AUG.	SEPT.	OCT.	NOV.	DEC.	Average of Registered Numbers.
The Park	460	460	451	446	462	425	453	480	493	439	408	453
George Street	486	485	478	469	455	448	448	455	443	434	409	456
Victoria	609	600	590	584	566	585	580	595	584	577	541	578
Louisa	478	499	496	514	525	511	508	539	545	543	507	514
John	568	563	560	584	547	511	560	578	568	537	469	552
Phoebe	844	839	838	872	871	858	883	915	908	874	855	869
Palace	243	239	228	224	227	215	219	224	220	229	218	226
Parliament	348	339	341	368	363	356	368	385	396	376	373	364
Church	356	350	337	360	369	377	366	389	376	380	358	366
Winchester	256	274	281	302	321	317	312	343	351	347	344	314
Wellesley	290	302	297	304	310	288	276	306	324	331	313	304
Elizabeth	378	383	366	368	352	343	320	305	299	284	275	334
York	318	332	327	321	316	274	272	300	318	331	280	308
Behurst	448	443	432	439	453	422	436	443	433	429	405	435
Niagara	396	392	360	357	400	387	360	365	361	347	369	369
Givens	217	206	200	209	217	207	220	229	226	237	216	217
Borden	160	163	151	159	166	162	160	161	157	153	135	157
Leslieville	94	91	83	96	104	101	93	96	101	101	93	96
Total	6949	6950	6806	6966	7024	6737	6834	7110	7103	6949	6569	6912

TABLE B.
Showing the Average Attendance at each School for each Month.

SCHOOLS.	JAN.	FEB.	MAR.	APRIL.	MAY.	JUNE.	AUG.	SEPT.	OCT.	NOV.	DEC.
The Park.....	388	369	368	375	365	354	395	412	399	364	351
George Street.....	436	414	424	418	403	405	402	406	404	393	365
Victoria.....	553	525	524	513	502	482	500	531	524	512	488
Lonia.....	425	419	426	432	425	464	445	475	485	489	452
John.....	483	464	449	453	462	455	458	494	481	427	430
Phoebe.....	685	651	654	700	727	721	765	772	734	721	704
Palace.....	211	209	203	201	195	199	195	201	201	208	201
Parliament.....	298	287	294	300	301	317	331	344	339	337	304
Winchester.....	310	280	272	300	315	337	309	337	324	328	314
Church.....	226	233	242	269	281	269	268	294	320	319	297
Wellesley.....	262	255	253	260	257	254	235	268	290	304	272
Elizabeth.....	318	319	323	316	299	300	275	272	266	257	244
York.....	278	270	276	272	259	241	221	254	271	290	221
Bathurst.....	396	375	357	366	387	381	396	394	343	376	356
Niagara.....	329	310	299	306	338	320	320	320	303	278	288
Givens.....	186	173	157	170	187	184	189	195	194	187	162
Borden.....	138	138	127	130	142	139	145	143	130	118	122
Lealieville.....	81	77	71	78	85	87	80	84	86	84	78
Total.....	6003	5768	5719	5849	5957	5945	5929	6196	6094	5992	5651

TABLE C.
Showing the number of days lost through absence during the year.

SCHOOLS,	Average of Monthly Registered Numbers.	Average number of days lost through absence during the year.												TOTAL. 215 Days.	Average per Pupil.
		JAN. 21 Days.	FEB. 21 Days.	MAR. 22 Days.	APRIL 14 Days.	MAY. 22 Days.	JUNE. 21 Days.	AUG. 13 Days.	SEPT. 21 Days.	OCT. 22 Days.	NOV. 21 Days.	DEC. 10 Days.			
The Park	453	1512	1902	1431	773	1081	864	508	884	1164	1131	732	11982	26	
George Street	456	1030	1523	1192	636	1184	863	337	934	941	911	903	10474	23	
Victoria	578	1176	1365	1487	828	1191	913	755	994	979	1004	635	11327	19	
Louisa	514	1113	1533	1227	702	1164	989	592	1224	1240	1377	1362	12523	24	
John	552	1785	2114	2372	1256	1786	1302	854	1607	1619	2058	1105	17858	32	
Pharos	869	3339	4119	4052	2044	3130	2863	1087	2837	3771	3004	2348	32594	37	
Palace	225	672	703	532	218	552	368	250	403	379	401	372	4780	21	
Parliament	364	150	1222	904	502	1285	708	321	733	1021	826	1122	9694	27	
W. Inchester	366	966	1407	1434	570	889	643	481	740	643	810	740	9565	26	
Ch. W. Inchester	314	630	802	745	484	661	577	297	756	603	595	764	6974	22	
W. Ashley	304	588	940	958	598	1083	659	480	480	491	473	398	5974	22	
Elizabeth	344	1260	1386	1074	736	1083	994	527	572	712	598	503	9335	19	
York	305	840	1085	789	561	815	437	354	593	608	731	921	7804	25	
Bothurst	435	1092	1282	1418	706	952	730	359	880	1600	866	940	10985	25	
Niagara	369	1407	1432	1318	515	780	674	391	628	1034	1074	560	9833	27	
Glenn	217	651	677	534	177	520	376	177	411	396	947	655	6161	27	
Boarden	157	462	609	486	203	484	516	151	185	278	618	229	4221	27	
Leslieville	96	273	339	298	244	371	308	153	264	301	320	258	3129	32	
Total	6912	19866	24610	22551	12923	18387	14747	7815	15063	17840	17744	14567	185413		

TABLE D.
Showing the number of cases of Lateness during the year.

SCHOOLS.	Average of Monthly Registered Numbers.	JAN. 31 Days. 21 Days.												FEB. 28 Days. 21 Days.												MAR. 31 Days. 24 Days.												APRIL 30 Days. 22 Days.												MAY 31 Days. 24 Days.												JUNE 30 Days. 23 Days.												AUG. 31 Days. 24 Days.												SEPT. 30 Days. 23 Days.												OCT. 31 Days. 24 Days.												NOV. 30 Days. 23 Days.												DEC. 31 Days. 24 Days.												TOTAL 312 Days.												Average per Day.																																																																																																					
		308												337												333												169												210												174												44												142												243												166												213												2354												10.8																																																																																																					
The Park	453	308	337	333	169	210	174	44	142	243	166	213	2354	10.8	504	302	294	116	200	184	86	170	217	177	2475	11.5	354	264	262	120	153	154	90	186	151	264	195	2193	10.2	195	208	155	70	108	107	73	85	144	113	88	1346	6.2	419	334	281	182	305	339	130	254	283	221	275	3023	14	1588	1035	725	277	371	260	174	434	312	345	220	5741	26.7	82	79	29	23	32	26	31	44	41	44	35	466	2.1	227	196	175	67	137	120	55	76	178	125	129	1485	6.9	338	261	146	112	156	137	95	161	124	158	195	1883	8.7	103	79	94	38	103	82	43	57	80	107	106	892	4.1	131	161	177	69	100	45	19	25	22	30	34	813	3.8	353	302	215	105	150	130	37	108	103	149	190	1842	8.6	146	62	53	26	23	24	26	31	45	62	50	548	2.5	648	478	314	259	340	192	61	128	139	125	186	2870	13.3	253	330	119	95	82	56	27	25	90	124	60	1261	5.8	182	129	118	36	70	53	38	53	110	63	68	920	4.3	193	195	122	49	69	33	18	32	23	33	34	831	3.9	88	56	38	30	30	71	76	28	40	38	46	553	2.6	6107	4808	3650	1843	2680	2192	1075	2106	2296	2422	2307	31476	146.4
George Street	456	504	302	294	116	200	184	86	170	217	177	2475	11.5	354	264	262	120	153	154	90	186	151	264	195	2193	10.2	195	208	155	70	108	107	73	85	144	113	88	1346	6.2	419	334	281	182	305	339	130	254	283	221	275	3023	14	1588	1035	725	277	371	260	174	434	312	345	220	5741	26.7	82	79	29	23	32	26	31	44	41	44	35	466	2.1	227	196	175	67	137	120	55	76	178	125	129	1485	6.9	338	261	146	112	156	137	95	161	124	158	195	1883	8.7	103	79	94	38	103	82	43	57	80	107	106	892	4.1	131	161	177	69	100	45	19	25	22	30	34	813	3.8	353	302	215	105	150	130	37	108	103	149	190	1842	8.6	146	62	53	26	23	24	26	31	45	62	50	548	2.5	648	478	314	259	340	192	61	128	139	125	186	2870	13.3	253	330	119	95	82	56	27	25	90	124	60	1261	5.8	182	129	118	36	70	53	38	53	110	63	68	920	4.3	193	195	122	49	69	33	18	32	23	33	34	831	3.9	88	56	38	30	30	71	76	28	40	38	46	553	2.6	6107	4808	3650	1843	2680	2192	1075	2106	2296	2422	2307	31476	146.4													
Victoria	578	354	264	262	120	153	154	90	186	151	264	195	2193	10.2	195	208	155	70	108	107	73	85	144	113	88	1346	6.2	419	334	281	182	305	339	130	254	283	221	275	3023	14	1588	1035	725	277	371	260	174	434	312	345	220	5741	26.7	82	79	29	23	32	26	31	44	41	44	35	466	2.1	227	196	175	67	137	120	55	76	178	125	129	1485	6.9	338	261	146	112	156	137	95	161	124	158	195	1883	8.7	103	79	94	38	103	82	43	57	80	107	106	892	4.1	131	161	177	69	100	45	19	25	22	30	34	813	3.8	353	302	215	105	150	130	37	108	103	149	190	1842	8.6	146	62	53	26	23	24	26	31	45	62	50	548	2.5	648	478	314	259	340	192	61	128	139	125	186	2870	13.3	253	330	119	95	82	56	27	25	90	124	60	1261	5.8	182	129	118	36	70	53	38	53	110	63	68	920	4.3	193	195	122	49	69	33	18	32	23	33	34	831	3.9	88	56	38	30	30	71	76	28	40	38	46	553	2.6	6107	4808	3650	1843	2680	2192	1075	2106	2296	2422	2307	31476	146.4																									
Louisa	514	195	208	155	70	108	107	73	85	144	113	88	1346	6.2	419	334	281	182	305	339	130	254	283	221	275	3023	14	1588	1035	725	277	371	260	174	434	312	345	220	5741	26.7	82	79	29	23	32	26	31	44	41	44	35	466	2.1	227	196	175	67	137	120	55	76	178	125	129	1485	6.9	338	261	146	112	156	137	95	161	124	158	195	1883	8.7	103	79	94	38	103	82	43	57	80	107	106	892	4.1	131	161	177	69	100	45	19	25	22	30	34	813	3.8	353	302	215	105	150	130	37	108	103	149	190	1842	8.6	146	62	53	26	23	24	26	31	45	62	50	548	2.5	648	478	314	259	340	192	61	128	139	125	186	2870	13.3	253	330	119	95	82	56	27	25	90	124	60	1261	5.8	182	129	118	36	70	53	38	53	110	63	68	920	4.3	193	195	122	49	69	33	18	32	23	33	34	831	3.9	88	56	38	30	30	71	76	28	40	38	46	553	2.6	6107	4808	3650	1843	2680	2192	1075	2106	2296	2422	2307	31476	146.4																																						
John	552	419	334	281	182	305	339	130	254	283	221	275	3023	14	1588	1035	725	277	371	260	174	434	312	345	220	5741	26.7	82	79	29	23	32	26	31	44	41	44	35	466	2.1	227	196	175	67	137	120	55	76	178	125	129	1485	6.9	338	261	146	112	156	137	95	161	124	158	195	1883	8.7	103	79	94	38	103	82	43	57	80	107	106	892	4.1	131	161	177	69	100	45	19	25	22	30	34	813	3.8	353	302	215	105	150	130	37	108	103	149	190	1842	8.6	146	62	53	26	23	24	26	31	45	62	50	548	2.5	648	478	314	259	340	192	61	128	139	125	186	2870	13.3	253	330	119	95	82	56	27	25	90	124	60	1261	5.8	182	129	118	36	70	53	38	53	110	63	68	920	4.3	193	195	122	49	69	33	18	32	23	33	34	831	3.9	88	56	38	30	30	71	76	28	40	38	46	553	2.6	6107	4808	3650	1843	2680	2192	1075	2106	2296	2422	2307	31476	146.4																																																			
Phoebe	869	1588	1035	725	277	371	260	174	434	312	345	220	5741	26.7	82	79	29	23	32	26	31	44	41	44	35	466	2.1	227	196	175	67	137	120	55	76	178	125	129	1485	6.9	338	261	146	112	156	137	95	161	124	158	195	1883	8.7	103	79	94	38	103	82	43	57	80	107	106	892	4.1	131	161	177	69	100	45	19	25	22	30	34	813	3.8	353	302	215	105	150	130	37	108	103	149	190	1842	8.6	146	62	53	26	23	24	26	31	45	62	50	548	2.5	648	478	314	259	340	192	61	128	139	125	186	2870	13.3	253	330	119	95	82	56	27	25	90	124	60	1261	5.8	182	129	118	36	70	53	38	53	110	63	68	920	4.3	193	195	122	49	69	33	18	32	23	33	34	831	3.9	88	56	38	30	30	71	76	28	40	38	46	553	2.6	6107	4808	3650	1843	2680	2192	1075	2106	2296	2422	2307	31476	146.4																																																																
Parliament	226	227	196	175	67	137	120	55	76	178	125	129	1485	6.9	338	261	146	112	156	137	95	161	124	158	195	1883	8.7	103	79	94	38	103	82	43	57	80	107	106	892	4.1	131	161	177	69	1																																																																																																																																																																																																										

TABLE E.

Showing the Average Number of Pupils to each Teacher during the year.

SCHOOLS.	Average Recited Attendance.	Number of Teachers.	Average Number of Pupils to each Teacher.
The Park	453	8	57
George Street	456	6	76
Victoria "	578	8	72
Louisa "	514	7	73
John "	552	8	69
Phoenix "	869	11	79
Palace "	226	4	57
Parliament "	364	5	73
Winchester "	366	4	92
Church "	314	4	79
Wellesley "	304	4	76
Elizabeth "	334	4	84
York "	308	4	77
Bethurst "	435	5	87
Niagara "	369	4	92
Givins "	217	4	54
Borden "	157	2	79
Leslieville "	96	2	48
Total	6912	94	74

TABLE F.

Showing the Ages of the Pupils Registered.

Between 6 and 10 Years.	Between 10 and 17 Years.	Between 17 and 21 Years.
450	269	—
373	229	1
362	439	—
461	173	5
399	418	6
714	492	3
261	70	—
386	117	—
382	129	—
229	186	—
309	122	—
317	186	—
334	114	1
426	190	—
470	105	—
236	73	—
171	35	—
102	24	3
6282	3498	19

TABLE G.

Showing the length of time the Pupils attended during the year.

Less than 20 Days.	Between 20 and 50 Days.	Between 50 and 100 Days.	Between 100 and 150 Days.	Between 150 and 200 Days.	More than 200 Days.
64	83	144	150	174	104
19	42	112	150	183	154
31	66	138	142	203	221
34	77	168	131	172	157
46	92	200	143	232	110
59	146	238	232	337	197
22	40	71	54	79	65
39	50	110	113	131	70
30	64	114	93	136	74
9	26	105	62	96	117
20	43	108	64	113	83
17	43	60	63	116	104
42	72	106	71	101	84
44	75	115	91	175	127
56	87	146	92	119	75
24	30	66	68	32	42
6	5	25	40	60	43
5	19	28	21	35	21
547	1079	2069	1715	2541	1848

TABLE I.

Comparative Statement of the City Schools, under specific headings,
from 1844 to 1876, both inclusive.

Year.	City Population.	Average Registered Attendance.	Average Daily Attendance.	No. of Teachers.	Average No. of Pupils to each Teacher.	Total Cost of Maintaining the Schools.	Cost per Child per ann. on basis of Registered Attendance.	Cost per Child per ann. on basis of Daily Attendance.
1844	18500	1194	12	100	4 1/2 months \$5508	\$5 00
1845	19706	1108	12	92	12 " 7684	7 00
1846	20565	1212	15	81	12 " 8044	6 60
1847	21734	1265	13	97	12 " 7484	6 00
1848	23503	1431	13	110	6 " 3668	5 20
1849	24226	1325	13	102	6 " 3668	5 08
1850	25766	1259	15	91	12 " 7992	6 30
1851	30762	1843	1366	16	85	12 " 9624	\$5 80	7 20
1852	35000	1872	1346	16	84	12 " 10232	5 40	7 40
1853	40000	1886	1402	20	70	12 " 12860	7 00	9 00
1854	41500	1871	1459	21	69	12 " 16704	8 50	11 40
1855	42500	3066	1570	31	50	12 " 20872	10 00	13 00
1856	43250	2318	1747	32	55	12 " 22568	10 00	12 80
1857	45000	2480	1863	36	52	12 " 24216	10 00	13 00
1858	47500	2522	1987	36	55	12 " 26396	9 69	12 80
1859	45000	2742	2150	38	56	12 " 25212	9 20	11 73
1860	45000	2846	2260	38	59	12 " 26044	9 15	11 52
1861	44743	2800	2180	38	57	12 " 25640	9 16	11 75
1862	45000	2825	2183	38	57	12 " 25054	8 94	11 48
1863	47500	3000	2287	38	60	12 " 25636	8 54	11 21
1864	47500	3121	2400	39	61	12 " 26184	8 39	10 91
1865	47500	3248	2251	40	56	12 " 26448	8 11	11 75
1866	47500	3139	2399	41	58	12 " 27548	8 62	11 17
1867	47000	3364	2609	41	64	12 " 26900	7 99	10 31
1868	50000	3657	2810	45	62	12 " 29044	7 94	10 33
1869	55000	3906	3132	46	68	12 " 30460	7 80	9 73
1870	56000	4106	3288	50	63	12 " 33348	8 02	10 02
1871	57500	4646	3638	52	70	12 " 35000	7 53	9 62
1872	58000	5100	4070	61	67	12 " 42500	8 33	10 44
1873	60000	5536	4453	65	69	12 " 55500	10 02	12 46
1874	62000	5924	4814	75	84	12 " 52000	6 31	10 80
1875	64000	6447	5386	90	72	12 " 58772	6 08	10 91
1876	65000	6912	5976	94	73	12 " 60456	6 17	10 13

TABLE J.

List of Teachers, arranged with a view to secure Equitable Promotion, and showing the Division taught by each Teacher; their Certificates; Places of Training; and the Dates at which they entered the service of the Board.

NAMES.		CERTIFICATES.	WHERE TRAINED.	ENTERED SERVICE OF BOARD.
PRINCIPALS.				
Anderson, James	Provincial 2nd B.	Edinburgh, Scotland.	January, 1858
Birchard, Isaac J.	Provincial 1st A.	Prov. Normal School.	September, 1874
Campbell, John	County Bd. 1st A.	September, 1868
Chambers, Miss C. M.	Provincial 1st B.	Prov. Normal School.	November, 1856
Clark, Levi	Provincial 1st C.	April, 1872
Coyne, Samuel	County Bd. 1st A.	April, 1872
Dean, Robert W.	Provincial 2nd B.	Prov. Normal School.	January, 1871
Gill, Martin	Provincial 1st B.	Prov. Normal School	April, 1872
Lewis, Richard	County Bd. 1st A.	Ireland, by Ch. Society.	November, 1869
Lewis, R. T.	County Bd. 1st A.	Liverpool, England.	January, 1877
McAllister, Samuel	Provincial 2nd B.	Prov. Normal School.	November, 1859
McCausland, Robert	County Bd. 1st A.	Prov. Normal School.	January, 1864
McDonald, Adam F.	County Bd. 1st A.	May, 1871
McDonnell, Adam	Provincial 2nd B.	Prov. Normal School.	September, 1876
Phillips, John	County Bd. 1st C.	June, 1868
Powell, George K.	Provincial 1st A.	Prov. Normal School.	January, 1877
Pyne, Albert R.	Provincial 1st C.	Prov. Normal School.	August, 1875
Spence, Francis S.	Provincial 1st B.	Prov. Normal School.	September, 1874
Spotton, Wm.	County Bd. 1st C.	January, 1877
ASSISTANT MASTERS.				
Brown, Henry	County Bd. 1st A.	M. reh, 1874
Handry, Andrew	Provincial 1st C.	Prov. Normal School.	September, 1874
Meldrum, Peter G.	Provincial 1st B.	Prov. Normal School.	September, 1874

TABLE J. (Continued.)
FEMALE ASSISTANT TEACHERS.

NAMES.	DIVISION.	CERTIFICATES.	WHERE TRAINED.	ENTERED SERVICE OF BOARD. (Last time.)
Miss Margaret Buik.....	First.	Provincial 1st A.	Prov. Normal School.	1865
" Olivia Dunn.....	"	Provincial 1st A.	"	January, 1864
" M. J. Keown.....	"	County Ed. 1st A.	"	April, 1832
" Susan Hamilton.....	Second.	County Bd. 1st C.	"	April, 1858
" Charlotte Spotted.....	"	Provincial 1st B.	"	April, 1866
" Mary A. Worth.....	"	Provincial 1st A.	"	September, 1870
" Charlotte Fraser.....	Third.	Provincial 1st C.	"	October, 1871
" Elizabeth Kennedy.....	"	Provincial 2nd.	"	April, 1872
" Sarah McCreight.....	"	Provincial 1st A.	"	June, 1865
" Margaret Sutherland.....	"	Provincial 1st A.	"	October, 1870
" Rebecca Thompson.....	"	Provincial 2nd A.	"	October, 1869
" E. A. Williams.....	"	Provincial 1st B.	"	October, 1870

TABLE J. (Continued.)
FEMALE ASSISTANT TEACHERS.

NAMES.	DIVISION.	CERTIFICATES.	WHERE TRAINED.	ENTERED SERVICE OF BOARD. (Give time.)
Miss Margaret Coyne	Fourth.	Provincial 1st C.	Prov. Normal School.	1871
" S. M. Hamilton	"	Provincial 1st C.	"	February, 1868
" S. J. Hamilton	"	Provincial 1st C.	"	January, 1868
" Agnes Kellogg	"	Provincial 1st C.	"	August, 1875
" Jessie Rogers	"	Provincial 1st B.	"	April, 1872
" Georgina Round	"	County Bd. 1st A.	London Training School.	January, 1865
" Annie Armstrong	Fifth.	Provincial 2nd A.	Prov. Normal School.	July, 1861
" Annie I. Cameron	"	County Bd. 1st A.	"	August, 1875
" Jessie Campbell	"	Provincial 2nd A.	"	October, 1870
Mrs. Annie Carvey	"	Provincial 1st C.	"	September, 1870
Miss Jane A. Cruise	"	Provincial 1st C.	"	September, 1870
" Helen Fraser	"	County Bd. 1st B.	"	January, 1871
" Emma Gray	"	Provincial 1st B.	"	April, 1872
Mrs. E. A. Green	"	Provincial 1st C.	"	March, 1874
Miss Emma Kennedy	"	Provincial 1st C.	"	April, 1872
" Kate Lemon	"	Provincial 1st B.	"	March, 1872
" Kate Scarlett	"	Provincial 2nd B.	"	March, 1863
" Jane Smyth	"	County Bd. 1st A.	"	June, 1874
Mrs. Kate Stevenson	"	Provincial 1st C.	"	March, 1874
Miss Maria Woods	"	Provincial 1st C.	"	September, 1869
				January, 1873

Mrs. M. A. Fitzgerald	Sixth.	Provincial 2nd A.	Prov. Normal School.	1873
Miss Margaret Fraser	"	Provincial 1st C.	"	August, 1874
" Carrie Gray	"	Provincial 1st A.	"	September, 1874
" Mary Gunn	"	Provincial 1st B.	"	September, 1874
" Phoebe Johnston	"	Provincial 1st B.	"	December, 1872
Mrs. Lillie Leadley	"	Provincial 1st B.	"	March, 1872
Miss Susan McKenzie	"	Provincial 2nd A.	"	April, 1872
Mrs. Kate Rowland	"	Provincial 2nd A.	"	September, 1870
Miss Amelia Sims	"	Provincial 2nd A.	"	February, 1873
" Georgina Stokes	"	Provincial 1st C.	"	January, 1871
" Annie Chambers	Seventh.	Provincial 2nd B.	"	May, 1872
" Ada Frisby	"	Provincial 2nd A.	"	March, 1874
" Margaret Hunter	"	Provincial 2nd B.	"	June, 1873
" Margaret Newton	"	Provincial 1st C.	"	January, 1875
" Harriet Somerville	"	Provincial 2nd B.	"	September, 1874
Mrs. J. S. Arthurs	"	Provincial 1st A.	"	February, 1876
Miss Lizzie Wills	"	Provincial 2nd B.	"	April, 1873

Miss Kate M. Allan.....	Ninth.	Provincial 2nd A.	Prov. Normal School.	October, 1876
Mrs. A. F. Armour.....	"	Provincial 2nd B.	"	January, 1877
" J. S. Balmer.....	"	Provincial 1st.	"	April, 1876
" Catharine Breckon.....	"	Provincial 1st B.	"	January, 1877
Miss Thomastine Carlyle.....	"	Provincial 2nd B.	"	August, 1875
Mrs. M. J. Charlton.....	"	Provincial 2nd B.	"	November, 1876
Miss Alice Freeman.....	"	Provincial 2nd B.	"	October, 1875
" Jennie Gunn.....	"	Provincial 1st.	"	August, 1876
" Charlotte Jackson.....	"	Provincial 2nd B.	"	October, 1876
Mrs. J. A. McBrien.....	"	Provincial 2nd B.	"	September, 1874
Miss Louise Payne.....	"	Provincial 2nd B.	"	January, 1877
" Martha Sefton.....	"	Provincial 2nd B.	"	January, 1876
" Bertha Sims.....	"	Provincial 2nd B.	"	October, 1875
" Lois Slater.....	"	Provincial 2nd B.	"	January, 1876
" Hannah Staum.....	"	County Bd. 1st B.	"	February, 1875
" Emily C. Thompson.....	"	County Bd. 1st A.	"	January, 1877
" M. L. Williams.....	"	Provincial 1st C.	"	January, 1877
"	"	Provincial 1st.	"	January, 1877

TABLE J. (Continued.)
FEMALE ASSISTANT TEACHERS.

NAMES.	DIVISION.	CERTIFICATES.	WHERE TRAINED.	ENTERED SERVICE OF BOARD. (Last time).
Miss Matilda Chadwick ..	Tenth.	Provincial 2nd B.	Prov. Normal School.	January, 1877
" Lizzie Foulds ..	"	Provincial 2nd B.	"	January, 1877
" Lizzie Gallatly ..	"	Provincial 2nd B.	"	January, 1877
" Georgina Grant ..	"	Provincial 2nd B.	"	January, 1877
" Annie A. Gray ..	"	Provincial 2nd A.	"	January, 1877
" E. R. Gray ..	"	Provincial 2nd B.	"	January, 1877
" Sarah Hegarty ..	"	Provincial 2nd B.	"	January, 1877
" Louisa Kahler ..	"	Provincial 2nd A.	"	January, 1877
" L. Kessick ..	"	Provincial 2nd B.	"	January, 1877
Mrs. McCueg ..	"	Provincial 2nd A.	"	January, 1877
Miss E. Y. Sams ..	"	Provincial 2nd B.	"	January, 1877
" Annie Sifton ..	"	Provincial 2nd B.	"	January, 1877
" Maggie Shore ..	"	Provincial 2nd B.	"	January, 1877
Mrs. M. Steward ..	"	Provincial 2nd B.	"	January, 1877
Miss L. S. Taylor ..	"	Provincial 2nd A.	"	February, 1877
" Florence Thompson ..	"	Provincial 2nd B.	"	January, 1877
" Fanny Woodhouse ..	"	Provincial 2nd B.	"	April, 1877

Examiners' Report.

Examinare Scholam

REPORT

OF THE

Examiners in regard to the Combined Examinations.

The Examiners have the honour to report that, in the discharge of the duty entrusted to them, they examined on the 19th and 20th of June, the selected pupils sent up to them from the several Public Schools in the City, containing pupils of the first and of the second divisions. The number of pupils appearing was 320, being 60 more than took part in the corresponding examinations a year ago. As the number sent from each division is the same as last year, the increase in the aggregate must be due to the formation of second division classes in some schools, where only lower division classes were previously found. The increase, arising in this way, is a pleasing evidence of the rapid growth of the Public Schools of the City in the popular favour.

The Examination, except in reading, was throughout a written one. This mode of testing the attainments of the pupils is one which, when the number of the pupils is taken into account and also the number of the subjects, requires much time and pains, but there can be no doubt that it is altogether the most satisfactory. The Examination was conducted in Louisa Street and Victoria Street Schools, and with the following results.

I. SECOND DIVISION.

The pupils of this Division numbered 220. They were taken from the Girls' Department of the Second Divisions in the following Schools: Louisa Street, Victoria Street, George Street, Phebe Street, and John Street; and from the Boys' Department of the same divisions in the same Schools, with the Park School added—twenty from each. They were examined in Reading, Spelling, History, Geography, Grammar, Arithmetic and Writing. Com-

paring the Schools in this division, the Boys' department in Louisa Street stands first; the Boys' department in Victoria Street nearly approaches it; the Girls' departments in Victoria Street and Phoebe Street are respectively third and fourth. The highest prizes in this division are given for general proficiency; the holders of these are very properly not permitted to take also prizes for excellence in the separate subjects included in the examination. The Examiners recommend these General Proficiency Prizes to be awarded to the following:

1. William Bugg, Victoria Street.
2. James McDonald, "
3. Elizabeth Bailey, Phoebe Street.
4. John Slack, Louisa Street.

Taking the subjects separately, or in natural groups, the Examiners find that in this division the greatest excellence in Arithmetic was reached by the Boys' department in Louisa Street, and the Girls' departments in Victoria Street and Phoebe Street: the first of the three, however, being much in advance of the other two. They find that the highest place in Grammar was taken by Louisa Street (Boys' department), and the next by the Girls' department in Phoebe Street. In History and Geography, the first place is taken by the Girls' department in Phoebe Street, and the second by the same department in Victoria Street. In Reading and Spelling, the Boys' department in Louisa Street comes again to the front; the second and third places are held by the Girls' department of John Street, and the Boys' department of Victoria Street. In Writing, also, Louisa Street shews the greatest degree of excellence.

As a whole, the pupils in this division have displayed very creditable attainments in History, Geography, and Grammar. The subject in which the greatest inequality has been shewn, and the lowest average attained, has been that of Arithmetic. This remark applies also to the pupils in the highest division.

In addition to the Prizes specified for proficiency in all the subjects taught in the division, the Examiners recommend the following to be given in the subjects named:—

I. ARITHMETIC.

1. Samual Boddy, George Street.
2. John Kirby, George Street.
3. Catherine Cobban, Victoria Street, and Charles Ramsay, Victoria Street.

II. GRAMMAR.

1. William Bengough, Victoria Street.
2. Frederick Katon, Louisa Street.
3. William Massey, Louisa Street.
4. Emma Bulstrode, Phœbe Street.

III. HISTORY AND GEOGRAPHY.

1. Allan Thompson, Victoria Street.
2. Arthur Stow, Victoria Street.
3. Catharine Hutchinson, Phœbe Street, and Edwin Fuerst, Victoria Street.

IV. READING AND SPELLING.

1. Hugh Rankin, Victoria Street.
2. Holden McLain, Louisa Street, William Massey, Louisa Street, and Robert Widdowson, John Street.

V. WRITING.

1. David S. Harwood, Louisa Street.
2. Thomas E. Richardson, George Street.

II. FIRST DIVISION.

There were one hundred pupils in this division, taken in equal numbers from the Girls' department of the highest divisions in Phœbe Street, Victoria Street, and the Park Schools, and from the Boys' department of the same divisions in Victoria Street and John Street Schools. They were examined in Arithmetic, Algebra, Mensuration and Natural Philosophy, which formed the first group of subjects; in Grammar and Derivation, which formed the second; in History and Geography, which formed the third; in Reading, Spelling and Dictation, which formed the fourth; and in Book-keeping and Writing, which formed the fifth.

In the first group of subjects, the greatest excellence was exhibited by the Boys' department of Victoria Street, and after it, by the Girls' department in the same School. In the second and third groups, the first and second places were again taken by the Boys'

and Girls' department of the same School (Victoria Street). In the fourth group of subjects there was less diversity of attainment. The first place was assigned to the Park School, and the second to John Street School. In the last group, the Boys' department in Victoria Street is again first, and the Girls' department in Phœbe Street second. Taking *the whole range* of subjects, the following is the order of merit, as brought out in these examinations: first, the Boys' department of Victoria Street; second, the Girls' department of Victoria Street; third, the Boys' department of John Street; fourth, the Girls' department of Phœbe Street; and fifth, the Girls' department of the Park School. The Examiners simply state results: they do not draw inferences as to the quality of the teaching in the respective schools above enumerated. They are aware that these results must depend not solely on the efficiency of the drill in the School in which the pupils are placed, while studying the highest division subjects, but on the character of the teaching in the Schools from which they are drafted, when they enter on this stage of their studies.

The medals to be given to the first boy and the first girl in the Public Schools, have been honorably won by John Burgess, Victoria Street, and Jennie Nasmith, of the same School. Their aggregate marks were not far from equal. It is right to say that another boy and another girl, from the same School, were very close upon the successful competitors for these honours.

The Examiners recommend Scholarships for General Proficiency to be given as follows:

1. John Burgess, Victoria Street.
2. Jennie Nasmith, Victoria Street.
3. Samuel McCulloch, Victoria Street.
4. Sarah Loudon, Victoria Street.
5. Frederick Passmore, Victoria Street.
6. James Douglas, Victoria Street.
7. Margaret Sheppard, Phœbe Street.
8. George Watts, Victoria Street.
9. Eliza Balmer, Victoria Street, and Maria August, Phœbe Street.
11. Hugh Stevenson, Victoria Street.
12. Jessie Semple, Phœbe Street.

They also recommend a special prize to be given to Ida Phillips, Park School, who was entitled to the 8th Scholarship, but to whom it is not convenient to take it.

They recommend that Prizes be given for excellence in special subjects, as follows:

I. MATHEMATICS.

1. William Lovell, John Street. 2. Harriet Johnston, Phoebe Street. 3. Isabella Cruise, The Park. 4. Thomas Pinkney, Victoria Street.

II. GRAMMAR AND DERIVATION.

1. David C. Anderson, John Street. 2. William Boddy, John Street. 3. Emily Brown, Victoria Street. 4. Isabella Cruise, The Park.

III. HISTORY AND GEOGRAPHY.

1. Jessie Agnew, The Park. 2. William Nicol, Victoria Street, and Isabella Cruise, The Park. 4. Harriet Johnston, Phoebe Street, and Andrew Bain, John Street.

IV. READING AND SPELLING.

1. Jessie Niven, The Park. 2. Ellen Spence, Victoria Street, and Alexander Dewdney, Victoria Street. 4. Frederick Duffey, John Street.

V. WRITING AND BOOK-KEEPING.

1. Thomas Pinkney, Victoria Street. 2. Mary Duffey, Phoebe Street. 3. Jessie Niven, The Park.

In bringing their Report to a close, the Examiners would congratulate the School Board of the City of Toronto on the excellent results of recent changes introduced by it, and in particular, of the greater degree of attention paid to the *grading* of the pupils. The advancement from even last year is very marked in the highest division, where the highest School does not distance the lowest by any degree which cannot be easily accounted for. The diversity of attainment is still much too great in the Schools of the second division. In some subjects the aggregate marks attained by the twenty pupils of one School, are even five-fold those attained by a corresponding number of pupils from another. This subject will doubtless engage the attention of the Board, and the excellent and indefatigable Inspector, from whom the Examiners have received, as in former years, much valuable assistance in the work assigned to them. It is only right to state, in closing, that it is abundantly

evident, from the papers given in, that there has been a great amount of diligent and painstaking labour throughout the year, on the part both of teachers and pupils. Many whose names do not appear on the prize lists, have been but a mark or two behind those who have gained these honours. In the execution of the papers, so far as form is concerned, there has been a marked advance on former years.

JOHN M. KING, M.A.

A. McMURCHY, M.A.

A. H. MUNRO.

ISAAC TOVELL.

Toronto, June 29, 1876.

The following are the names of the successful pupils in each Division below the Second Grade. These classes did not compete with each other. Three prizes were given in each class as the result of an examination conducted by the Inspector:—

PARK SCHOOL.

Third Division. Boys—1. Chas. B. Goldsmith. 2. Egerton J. Cluskey. 3. James Pearcy.

Third Division. Girls—1. C. Gifford. 2. Maggie Brown. 3. A. Brown.

Fourth Division. 1. Dred Arlington. 2. Lizzie Gallow. 3. Victoria Loane, and Lottie McLean.

Fifth Division, Senior. 1. Edith Ross. 2. Mary Cluskey. 3. George Partridge.

Fifth Division, Junior. 1. Eddie Barston. 2. Wm. Stewart. 3. Phoebe Finch.

GEORGE STREET SCHOOL.

Third Division. Boys—1. Joseph Tomlinson. 2. Christopher Rogers. 3. Thomas A. King.

Third Division. Girls—1. Louisa Behberger. 2. Lizzie Peacock, 3. Belva Lapp.

Fourth Division. 1. Fannie Solomon. 2. Thomas McMullen. 3. Lizzie McCormack.

Fifth Division. 1. Frank Spink. 2. Birdie Morris. 3. Richard Lapp.

VICTORIA STREET SCHOOL.

Third Division. Boys—1. Wm. A. Sills. 2. John Anderson.
3. George Montgomery.

Third Division. Girls—1. Emily Payne. 2. Janet Graham. 3.
Elizabeth Thurman.

Fourth Division. 1. Agnes Rennie. 2. Eva Siddall. 3. Jessie
Tooze.

Fifth Division. 1. Joseph Langton. 2. Watson Taylor. 3.
Joseph Calvert.

LOUISA STREET SCHOOL.

Third Division. Boys—1. Wm. Magrath. 2. Elden Westman.
3. Thomas Funston.

Third Division. Girls—1. Jessie McDougal. 2. Agnes Mc-
Jannett. 3. Annie McLelland.

Fourth Division. 1. Ellen Sinclair. 2. Minnie Coulter. 3.
Maggie Agnew.

Fifth Division, Senior. 1. Janet McRobbie. 2. Alice Calton.
3. William Leake.

Fifth Division, Junior. 1. Walter Dillon. 2. Thomas Reid.
Harry Morley.

JOHN STREET SCHOOL.

Third Division. Boys—1. George Akroyd. 2. Alfred Bridge.
3. William Watson.

Third Division. Girls—1. Margaretta Kelso. 2. Maggie Hen-
derson. 3. Amelia Coleman.

Fourth Division. 1. John McBeth. 2. Colin Ross. 3. Samuel
Williams.

Fifth Division, Senior. 1. Sarah Burtchell. 2. Annie Holly-
man. 3. William Ross.

Fifth Division, Junior. 1. Ettie Rankin. 2. Herbert Kelly.
3. John Milligan.

PHOEBE STREET SCHOOL.

Third Division. Boys—1. Alfred Gray. 2. Thomas Frizzell.
3. Edward Maybee.

Third Division. Girls—1. Lillie Brown. 2. Maggie Muirhead.
3. Mary Mowat, and Bella Adams.

Fourth Division, Senior. 1. Tillie Watson. 2. Bella Vaughan.
3. Robert Potts.

Fourth Division, Junior. 1. Maggie Hunter. 2. Mahala Sawle. 3. William Orr.

Fifth Division, Senior. 1. Annie Churchill. 2. Hannah Higgins. 3. Eliza Trolley.

Fifth Division, Junior. 1. Daisy Dean. 2. Annie Dean. 3. George Johnston, and William Summers.

PALACE STREET SCHOOL.

Third Division, Senior. 1. Maud Cruise. 2. John Stein. 3. Harriet Bailey.

Third Division, Junior. 1. Hattie Hogarth. 2. Pollie Withers.
3. Mary Dunlop, and George Secor.

Fourth Division. 1. Annie Campbell. 2. Jas. A. T. Henderson. 3. Samuel George Hulme.

Fifth Division. 1. Maud Kiely. 2. Charles Hands. 3. John Harper, and Lionel Fitten.

PARLIAMENT STREET SCHOOL

Third Division. Boys—1. Albert Hibbitt. 2. Arthur Winter.
3. John Murray.

Third Division. Girls—1. Maggie Ferguson. 2. Annie Bowron. 3. Mary Jane Thompson.

Fourth Division. 1. Fanny Neeley. 2. Samuel Hinder. 3. Eva Mills.

Fifth Division, Senior. 1. Frank Wells. 2. Emma Bell. 3. Marion Tomlinson.

Fifth Division, Junior. 1. Drusilla Richardson. 2. Marshall Wells. 3. James Alward,

WINCHESTER STREET SCHOOL

Third Division. 1. Joseph M. A. Spence. 2. Charlotte. L. Logie. 3. Maggie K. Hunter.

Fourth Division. 1. James Ridley. 2. Bella Howe. 3. Willie Douglas.

Fifth Division, Senior. 1. Norman E. Boulton. 2. Ella McDonald. 3. Annie Hallworth.

Fifth Division, Junior. 1. Lillie Howden. 2. Robt. Abraham.
3. Mary Dundairy.

CHURCH STREET SCHOOL.

Third Division. Boys—1. Fred. Gilbert. 2. John Davy. 3. George Webber.

Third Division. Girls—1. Nellie Macfarland. 2. Emma Skirrow. 3. Jessie Middlemiss.

Fourth Division. 1. Martin M. Merry. 2. Edgar Gilray. 3. Alex. Douglass, and Fred. Thorpe.

Fifth Division. 1. Alfred Gibson. 2. Maggie Dickson. 3. Lena Jennings, and Meredith McKim.

WELLESLEY SCHOOL.

Third Division—Boys—1. George Munro. 2. Thomas Coulton. 3. David Wagner.

Third Division. Girls—1. Annie Burfoot. 2. Harriet Oulcott. 3. Augusta Judd.

Fourth Division. 1. George H. Gray, and John D. Spence. 3. James G. Christie.

Fifth Division. 1. Joseph Pim. 2. Ada Dawkins. 3. Alice Coles.

ELIZABETH STREET SCHOOL.

Third Division, Senior. 1. Laura Spence. 2. Edgar Pook, and John Thompson.

Third Division, Junior. 1. Mary Beaumont, and Emily Freeman. 3. Martha Robinson.

Fourth Division. 1. Ethel Smith. 2. Alice Rich. 3. Fanny Taylor.

Fifth Division. 1. Thomas Lucas. 2. Samuel Maddaford, and Charles Black.

YORK STREET SCHOOL.

Third Division, Senior. 1. Virginia Gilliam. 2. Minnie Frisby. 3. Theresa McKague.

Third Division, Junior. 1. Bessie Moodie. 2. Bertie Dye. 3. Lizzie Martin.

Fourth Division. 1. James Bruce. 2. Wm. Owen. 3. Annie Pollard, and Ada Leslie.

Fifth Division. 1. Dasie McCombe. 2. Walter Meldrum. 3. James Randall.

BATHURST STREET SCHOOL.

Third Division. Boys—1. Arthur Twells. 2. Archibald Harris. 3. George Hamilton.

Third Division. Girls—1. Lizzie Nightingale. 2. Elizabeth Grimason, and Frederica McQueen.

Fourth Division. 1. Thomas Kugele. 2. Albert Hudson. 3. Leona Lockhart.

Fifth Division, Senior. John Billinghamurst. 2. Walter Harris. 3. Richard Heard.

Fifth Division, Junior. 1. George Morell. 2. Annie Rhind. 3. Mary Jane Catchcart, and Arnot Monroe.

NIAGARA STREET SCHOOL.

Third Division. 1. Henry Calder. 2. John Carruth. 3. Kate Scully.

Fourth Division. 1. John McCartney, and Hester Timms. 3. Mary Clark.

Fifth Division, Senior. 1. Thomasina Rooke. 2. Elizabeth Shelkins. 3. Florence Taylor, Elizabeth Weeks, and Robert Cooper.

Fifth Division, Junior. 1. Jane Ann Ashton. 2. Minnie Ferguson. 3. Arthur Bates.

GIVINS STREET SCHOOL.

Third Division. Boys—1. William Hozack. 2. Walter Tucker. 3. George Cornell.

Third Division. Girls—1. Nellie Clarkson. 2. Fanny Hook. 3. Christina Smiley.

Fourth Division. Boys—1. Charles Mills. 2. John McMillan. 3. Herbert Oakley.

Fourth Division. Girls—1. Adelaide Earl. 2. Laura J. Clark. 3. Ettie Matthews.

BORDEN STREET SCHOOL.

Fourth Division. 1. William Flight. 2. Joseph Churchill. 3. Thomas Goldsmith.

Fifth Division. 1. John Flux. 2. John Pollard. 3. Charles Cooper.

HURON STREET SCHOOL.

Fourth Division. 1. Mary Baillie. 2. Mary J. McIntosh. 3. Millicent Price.

Fifth Division. 1. Charles Watson. 2. William White. 3. Nellie Ross.

LESLIEVILLE SCHOOL.

Senior Division. 1. George Nicholson. 2. Jesse Ashbridge. 3. George Cummings. 4. Charlotte Nicholson.

Junior Division. 1. Gustavus Hamilton. 2. Thomas Lennord. 3. George Jones.



Examination Papers.



Examination Papers.

COMBINED EXAMINATION.

FIRST DIVISION.

ARITHMETIC AND MENSURATION.

1. State the operations which can be performed on concrete numbers of the same kind. Find the price of six cords of wood @ \$6 per cord. Indicate clearly which is your multiplier.

2. Simplify $\frac{4\frac{1}{2} \text{ of } 3 - 3\frac{1}{4} \text{ of } 3\frac{1}{2}}{4\frac{1}{4} - 3\frac{1}{3}} \div (6\frac{1}{2} \text{ of } \frac{1}{3\frac{1}{3}} + \frac{1}{2\frac{1}{4}})$.

3. Find the value of $\frac{8\frac{1}{2} \times 2\frac{2}{3}}{8\frac{1}{2} + 2\frac{2}{3}} \div \frac{8\frac{1}{2} - 2\frac{2}{3}}{8\frac{1}{2} \div 2\frac{2}{3}}$ of \$100.

4. In a certain school, there are in the first class three-sixteenths of the whole number in attendance; in the second, five-sixteenths; in the third, one-fourth; in the fourth, three-sixteenths, and the remainder, 20, in the fifth. Find the whole number in attendance and the number in each class.

5. Define a Fraction. Distinguish between a Vulgar and Decimal Fraction.

Find the sum of $\frac{3}{16}$, $\frac{3}{24}$, $\frac{3}{75}$, and $\frac{9}{144}$ and verify your result by decimals.

6. A mortgage made to run for two years, bearing interest at 6 per cent., was discounted at the end of six months: the amount of the mortgage was \$2000, rate of discount 10 per cent. per annum, and no interest was paid. Find the present value of the mortgage.

7. The Stock of the Bank of Toronto is selling at 185 per cent. and that of the Bank of Commerce at 124 per cent. ; the last half-yearly dividends of these two Banks were 6 per cent. and 4 per cent. respectively. An agent is instructed to invest \$500 in each of the above named Banks. Is there any annual income lost by not investing the whole sum in one of them instead of in the two, and how much ?

8. Define a straight line, a triangle, a square, a rectangle, a parallelogram.

9. Find all the area of a room, 30 ft. by 24 ft. and 16 ft. high. Find the cost of carpeting such a room with carpet $\frac{3}{4}$ yd. wide at \$1.40 per yard.

10. How many gallons does a cistern, whose depth is 8 feet and diameter 9 feet, contain ? (Gallon = 277.274 cubic inches.)

FIRST DIVISION.

ALGEBRA.

1. Simplify the *two* following expressions, by removing the brackets and collecting like terms :

$$1 - (1 - a) + (1 - a + a^2) - (1 - a + a^2 - a^3).$$

$$a - [2b + \{3c - 3a - (a + b)\} + \{2a - (b + c)\}].$$

2. Divide $x^4 - 81y^4$ by $x - 3y$.

3. Find the value of $\frac{1}{x+a} - \frac{1}{x-a} + \frac{4a}{x^2-a^2} - \frac{2a}{x^2+a^2}$

4. Find the value of x when $\frac{x}{4} - \frac{5x+8}{6} = \frac{2x-9}{3}$

5. Find the value of x when $a \frac{a-x}{b} - b \frac{b+x}{a} = x$.

6. The sum of £276 was raised by A, B, and C together ; B contributed twice as much as A and £12 more ; and C three times as much as B and £12 more : how much did each contribute ?

FIRST DIVISION.

NATURAL PHILOSOPHY.

1. What properties belong to all bodies ?
2. What is the Centrifugal Force ? What the Centripetal ?
3. Define the three different cases of Equilibrium ?
4. How many classes of Levers are there ? Where is the Fulcrum situated, in each class ?
5. What is Cohesion ? What Adhesion ?
6. What is Capillary Attraction ? Give examples.
7. Of what is the Atmosphere composed ? What are some of its uses ? What instruments are used to tell its weight and temperature ?
8. If we take the surface of the human body, equal to 2,000 square inches, what will be the pressure of the atmosphere upon it ?

FIRST DIVISION.

GRAMMAR.

1. Name and define the three classes of Nouns, and give three examples of each class.
2. Give the plural of life, cargo, canto, mercy, money, ox, deer, penny, woman.
3. State the various classes of pronouns, with the sub-divisions under each class, and assign to its class each of the following words : our, that, both, it, any, which, what, other.
4. State the various moods of the Verb. Define the Indicative and Subjunctive. Illustrate by examples.
5. Distinguish Co-ordinate from Subordinate Conjunctions, and give examples.
6. Parse the words in the following sentence : For length of days, and long life, and peace, shall they add to thee.

7. The pretty Insect, *for* it is *truly* such, with its dark body, red eyes, and *its* glassy wings *interlaced* by bright yellow fibres, enjoys *but* a little week; and *that* merry harping *which* pervades creation from sunrise to sundown, is but of *some* six *days'* duration.

- (1.) Analyse the extract.
 (2.) Parse the italicised words.

FIRST DIVISION.

DERIVATION.

Define the following words, giving their derivation and the meaning of the roots :

Biscuit,
 Occasion,
 Candle,
 Eccentric,
 Fag,
 Segregate,
 Elision,
 College,
 Licentiate,
 Triplet.

FIRST DIVISION.

GEOGRAPHY.

1. Define isothermal lines, the Ecliptic, the Zodiac, a peninsula, an archipelago, an estuary, a glacier, a waterspout.
2. Describe the boundaries of Europe, of Asia and of Africa.
3. What are the most important mountain ranges of Europe and the chief rivers of Asia and of Africa?
4. Name all the nations of Europe, and the capital of each, with the river upon whose bank it stands.

5. Mention all the countries included in the British empire.
6. State what are the boundaries of Great Britain, its principal mountains and rivers, and most important manufacturing towns and commercial ports.
7. Name four of the chief rivers and six of the most important cities of France.
8. What are the principal commercial ports on the Mediterranean ?
9. What are the chief exports of Great Britain, France, India and China ?
10. What is the longitude of the most Western point of Europe, and of the most Eastern point of Asia ; and what is the latitude of the most Northern point of Europe and of the most Southern point of Asia ?

FIRST DIVISION.

HISTORY.

1. Trace the descent of James I from Henry VII : and the descent of Queen Victoria from James I.
2. When did the Stuart period of English History begin and end, and what were its leading features ?
3. What was the character of each of the following sovereigns, James I, Charles I, Charles II and James II ?
4. What events in the reign of James I are to his discredit, and what event in his reign most honors it ?
5. Explain the cause of the contest between Charles I and his parliament, and name the battles fought in connection with it.
6. During the rule of Cromwell, what conquest was made, what battle was fought between him and the Scotch, and what naval war was waged ?

7. During the reign of Charles II, what humiliation did England suffer ; what two calamities befell London ; who were persecuted in Scotland, and what remarkable plot was discovered in England ?
8. What was the great design of James II ; what remarkable state trial took place during his reign, and what event brought his rule to an end ?
9. What event is to the discredit of the administration of William III ? In what four battles did Marlborough humble the power of France ? What kingdom was united to Great Britain in the reign of George I ?
10. What insurrection took place in England during the reign of George II ? What celebrated statesman rose to power, and what important foreign possessions were conquered ?
11. What three great wars, on three different continents, did Britain wage during the reign of George III ?
12. Mention six of the most important events in the reign of Queen Victoria ?
13. Mention the principal inventions and discoveries during the Stuart period ; the most celebrated author of the reign of George I ; a famous English philosopher who lived at the same time ; the most eminent poets of the reign of George II, and the principal historians during the reign of George III.

FIRST DIVISION.

BOOK-KEEPING.

1. Name the two methods of Book-keeping, and explain the difference between them.
2. What is the use of the Day Book, Journal, and Ledger ?
3. Where are the three different kinds of accounts kept, as in Third Set ?
4. What do the Stock and Balance Accounts show ?

5. Journalize the following :—

Jan. 1, Cash on hand	\$1,000	
Flour, 400 Barrels, @ \$4.00 per Brl.	\$1,600	\$2,600.00
“ 2, Sold to Jno. Hull, for Cash, 100 Barrels of Flour, @ \$6.00 per Brl.		600.00
“ 3, Lost through fire, 200 Brl's, @ \$4.00 per Brl.		800.00
“ 4, Rec'd Life Insurance Endowment, Cash		\$2,000.00

SECOND DIVISION.

ARITHMETIC AND MENSURATION.

1. The dividend is ten millions, ten thousand and ten; the divisor eight thousand seven hundred and sixty-four; the remainder fifteen hundred and twenty-two. Find the quotient.

2. Convert 3 lbs., 8 oz., 5 dwts. to avoirdupois weight.

3. State the operations which can be performed on concrete numbers of the same kind. Find the price of six cords of wood @ \$6 per cord. Indicate clearly which is your multiplier.

4. Simplify $\frac{4\frac{1}{2} \text{ of } 3 - 3\frac{1}{4} \text{ of } 3\frac{1}{2}}{4\frac{1}{4} - 3\frac{1}{3}} \div (6\frac{1}{2} \text{ of } 3\frac{1}{3} + \frac{1}{2\frac{1}{4}})$.

5. Find the value of $\frac{8\frac{1}{2} \times 2\frac{2}{3} + 8\frac{1}{2} - 2\frac{2}{3}}{8\frac{1}{2} + 2\frac{2}{3}} \div \frac{8\frac{1}{2} - 2\frac{2}{3}}{8\frac{1}{2} \div 2\frac{2}{3}}$ of \$100.

6. In a certain school, there are in the first class three-sixteenths of the whole number in attendance; in the second, five-sixteenths; in the third, one-fourth; in the fourth, three-sixteenths, and the remainder, 20, in the fifth. Find the whole number in attendance and the number in each class.

7. Define a Fraction. Distinguish between a Vulgar and Decimal Fraction.

Find the sum of $\frac{3}{16}$, $\frac{3}{24}$, $\frac{3}{75}$, and $\frac{9}{144}$ and verify your result by decimals.

SECOND DIVISION.

GRAMMAR.

1. Decline the personal pronouns of the first and third person.
2. Give the feminine of Abbot, Negro, Hero, Sir, Earl, Nephew ; and the masculine of Widow, Actress, Sorcerer.
3. Give the Comparative and Superlative of evil, fore, little.
4. Into what classes are verbs divided, in respect of meaning and of form ?
5. Give the 1st person singular of the verb " to smite," in each tense of the Indicative, Potential and Subjunctive Moods.
6. Give the past and past participle of beat, feel, crow, sew, win, lose, eat, tear.
7. " I do not believe *that* the statement *that that* man made is true " Parse the word "*that*" in the three places in which it is found in the above sentence.
8. I *had gone up* the river *nearly* two miles, *when coming* to a *little* stream, which *empties* into the larger, I turned into it to *explore its* course.
 - (1.) Analyse the above.
 - (2.) Parse the Italicised words.

SECOND DIVISION.

HISTORY.

1. Mention in order all the Sovereigns of England from William I to Richard II.
2. Explain the origin of the names Britain, Albion, Wales, England.
3. When did the Roman period of British History begin and end, and what were its leading events ?
4. Who was the greatest Saxon King of England, and what benefits did he confer upon his country ?

5. With whom did William I contend for the Crown of England, and what decisive battle was fought between them ?
6. Explain what is meant by the Domesday Book, Curfew-bell and Cinque-ports.
7. How did William Rufus obtain possession of his brother Robert's castles in Normandy ? What buildings in London did he erect, and how did he come to his end ?
8. With what ecclesiastic did Henry I quarrel, and what domestic calamity befel this king ?
9. What civil war was waged during the reign of Stephen ?
10. What prelate was murdered, and what king captured in the reign of Henry II ?
11. For what is Richard I most memorable ?
12. What famous document was King John compelled to sign, and when and where ? What was the "mad parliament," and when was it held ?
13. In whose reign was Wales conquered, and what heroes fought in defence of Scotland in the same reign ?
14. What awful calamity befell Europe in the reign of Edward II, and with what effect ?
15. What rising and revolution took place in the reign of Richard II ?
16. Explain what is meant by the Federal System and by Chivalry; and how the words ox, beef, sheep, mutton, calf, veal, pig and pork came into our language.

SECOND DIVISION.

GEOGRAPHY.

1. Define the Equator, Tropics, Antipodes, Zenith, an isthmus, a roadstead and a satellite.
2. What countries of Europe border on the Atlantic, and which of its countries border on the Mediterranean ?

3. Mention the principal rivers of Europe, and the chief mountain ranges of Asia and Africa.
4. Name all the countries of Asia.
5. Describe the boundaries of Spain, Belgium, and Switzerland.
6. Where are the islands of Cyprus, Malta and Spitzbergen; the rivers Ebro, Po, Vistula and Brahmaputra; and the cities of Bangkok, Astrachan, Benares and Cordova?
7. Name six of the most important cities of India, and four of the chief cities of China.
8. What colonies has Great Britain in the West Indies, and what ones in Africa?
9. For what is each of the following cities most famous: Birmingham, Manchester, Lyons, Bordeaux, Milan and Lucknow?
10. What large cities of Europe are there between the Parallels of 50° and 60° North Latitude?
11. What are the chief exports of Russia, Ireland, France and China?

THIRD DIVISION.

ARITHMETIC.

1. Write the Tables for Dry Measure and Apothecaries' Weight.
2. Find the value of MMMCDXLIX times MMXCV, minus DCCCLXXIV times CCCIX.
3. The sum of the product of two numbers and 355 is 247435, one of them is 89; find the other number.
4. The Remainder in a certain example is as large as it could be, the Divisor is 6085, the Quotient is one-half the Remainder; find the Dividend.
5. Reduce 69476853 inches to miles.
6. Reduce 67 acres, 2 r., 17 sq. per. to sq. inches.
7. How many minutes in the year 1876?

8. How many suits, each containing $5\frac{1}{2}$ yds., can be made from a piece of cloth containing 60 French Ells ?
9. One Grocer bought 28 hhds. of sugar, each containing 7 cwt. 3 qrs. 17 lbs., and another 13 hhds., each containing 11 cwt. 1 qr. 11 lbs. 13 oz. ; what was the difference in the quantities purchased ?
10. Divide 1000 acres of land equally among 37 persons.
Answer to be accurate as far as sq. yds.

THIRD DIVISION.

GRAMMAR.

1. Distinguish between Proper and Improper Diphthongs
2. Name the parts of Speech, and define Adverb, Preposition and Conjunction.
3. Define Person and Case.
4. Name all the inflections of the Adjective.
5. Name and explain the different ways of comparing Adjectives.
6. Give the General, and three Special Rules for the formation of the plural of Nouns.
7. Inflect the Personal Pronouns.
8. Define Relative Pronouns, and state how you know their Person, Gender and Number.
9. Analyze the following sentences :
My Brother John has a *fine horse*.
Samuel's sister is a beautiful *lady*.
Many are the *sayings* of the wise.
At the top of a hill on the margin of the *river* stood the *brave old chief*.
10. Parse the words in *Italics*.

THIRD DIVISION.

GEOGRAPHY.

1. Define Promontory, Peninsula, Isthmus, Achipelago, Channel, Equator, Zone.
2. Give the boundaries of Europe on the South, accurately.
3. Name the Countries of Europe and their Capitals.
4. Name the chief Rivers that enter into the Baltic Sea, the North Sea, and from France into the Atlantic Ocean, stating the names of the chief Towns on them.
5. Where and what are Sedan, Servia, Cronstadt, Funen, Kertch, Geneva, Corsica, Bonifacio ?
6. Draw an outline map of the large Island west of Great Britain, and mark on it the position of three of its most important Cities.

han-
the
ing
en,
eat
ost

Course of Study.

SUBJECTS.	10th Division.	9th Division.	8th Division.	7th Division.	6th Division.	5th Division.	4th Division.	3rd Division.	2nd Division.	1st Division.
READING AND ENGLISH LITERATURE.	1st Book. Part 1.	1st Book. Part 2.	2nd Book to page 120.	2nd Book to end.	3rd Book to page 164.	3rd Book to end.	4th Book to page 244.	4th Book to end.	5th Book to end.	Critical Reading of Works selected for Intermediate Examinations.
SPELLING AND DICTATION.	Words of Lessons.	Words and Phrases of Lessons.	Same as 9th.	Words and Phrases Orally and by Dictation.	Lessons from Reader. Grammatical and Common Terms Orally and by Dictation.	Same as preceding Class, and Technical Terms used in Lessons.	Same as Preceding Class. Prefixes, Affixes and leading Roots.	Same as Preceding Class.	Same as Preceding Class.	Same as Preceding Class.
WRITING.	Printing Lessons.	Printing Continued. Script from Reader on Slate.	Copy Book No. 1.	Copy Book No. 2.	Copy Book No. 3.	Copy Book No. 5.	Copy Book No. 5 (Boys). " " " 4 (Girls).	Girls, No. 9. Boys, No. 6.	Girls No. 9. Boys No. 7.	No. 8 for Both Sexes.
ARITHMETIC.	Counting by Objects, Beans, &c. Notation and Numeration to 100.	Notation and Numeration to 1,000. Addition Table Addition.	Arabic Notation to 10,000. Roman to 1,000. Addition and Subtraction. Multiplication Table, 5 Times. Mental Arithmetic.	Mental Arithmetic. Arabic Notation completed. Roman to 3,999. Multiplication Table. Multiplication and Short Division.	Weights and Measures. Long Division. Reduction. Mental Arithmetic.	Review of past work. Compound Rules. Fractions to Addition exclusive. Mental Arithmetic.	Review of past work. Vulgar and Decimal Fractions. Problems in Analysis. Mental Arithmetic.	Review past work. Proportion, Practice, Per Cent, Simple Interest. Mental Arithmetic.	Review of past work. Discount, Commission, Brokerage, Assessment, &c. Partnership, Square Root. Mental Arithmetic.	Review past work. Exchange, Compound Interest, &c.
GEOGRAPHY.	Cardinal Points of the Compass. Local Geography. Map of School Yard, &c.	Definitions of Physical Geography. Introduction to the Map of the World. Cardinal Points on Maps, &c.	Review past work. Outlines of the Physical Geography of the World.	Review past work. North America.	Review past work. South America. Lines on a Map.	Review past work. Canada, Ontario.	Review past work. Europe, Great Britain and Ireland. Latitude and Longitude.	Review past work. Asia, Africa and Oceania.	Review past work. Climate and Zones, Winds, Currents. Productions of the Earth. Means of Wealth in various Countries.	Review past work. Mathematical Geography. Phases of the Moon. Eclipses, &c. Geology of Ontario.
DRAWING.	Geometric Forms and Lines	Meaning of Terms used in Drawing. Geometric Forms from Memory and by Dictation.	Simple Subjects from Blackboard. Drawing from Memory.	Simple Designs in Geometric Forms. Copies from blackboard. Memory Drawing.	Curved Forms. Parts of Plants. Map Drawing (outlines).	Designing from Plant Forms. First notions of Perspective. Map Drawing. Memory Drawing.	Drawing from actual Objects. Designing continued. Memory Drawing. Map Drawing.	Object, Map and Memory Drawing Continued. Shading, Designing, Landscapes, Flowers, Animals (from Copies.)	Perspective fully explained. Flowers and Fruits (Girls). Architectural and Linear Drawing.	Subject Continued.
MUSIC.	Rote singing. Short, simple, melodic phrases, in the middle register only at first. Simple songs.	Rote singing continued. Short melodic phrases, and simple songs in common and triple time. Scale of do by numerals.	Review the work of the 9th Division. Scale of do by syllables. Additional songs.	Review the work of the 8th Division. Explanation of the Staff, with Leger lines, and the position of the notes thereon, with intonation. Additional songs.	Review the work of the 7th Division. Shapes, notes and relative values of notes, with and without dots. Time table. Rests. Bar. Measure. Additional songs.	Review the work of the 6th Division. Diatonic Scales, commencing with the Natural Intervals of Seconds and Thirds. Additional Songs.	Review the work of the 5th Division. Explain, Sharp, Flat and Natural. Simple, Common and Triple times, with the corresponding signatures. Intervals of Fourths and Fifths. Additional songs, by notation on the blackboard.	Review the work of the 4th Division. Key and Key-note. Consonant and Dissonant Intervals. Compound Time. Extended Intervals. Modulation Practice in all the Sharp Keys.	Review the work of the 3rd Division. Melody and Harmony. Part Singing. Point, Star and Tie. Common Cord and Inversions.	Review the work of the 2nd Division. Unisons, Triads, Solfegeios. Minor Diatonic Scale, and its relation to the Major, Compound Intervals, Transitions, Inversions, &c.
OBJECT LESSONS	Number, Size, Form and Colour.	Common Objects. (Parts and Qualities.)	Common Objects. (Parts, Qualities and Uses.)	Common Objects. (Source, Manufacture, Uses, &c.)	Animals. Birds.	Plants.				
GRAMMAR AND COMPOSITION.	Prompt correction of the errors made by the pupils.	Prompt correction of the Errors made by the Pupils.	Prompt correction of the Errors made by the Pupils.	Parts of Speech familiarly explained. Simple Statements Written on Slates.	Parts of Speech in Reading Lesson. Separation of Sentences into Subject and Predicate. Inflections of Nouns and Adjectives. Descriptions of Objects as taught in Object Lessons (on Slates).	Review past work. Analysis as in Form A. Pronouns. Verbs in indicative Mood. Construction and Variation of Form of Sentences. Short Descriptions based on Object Lessons (in Books).	Review past work. Analysis as in Form B. Complete the Inflections of Adverbs, Prepositions, Conjunctions and Interjections. Parse easy Prose sentences. Write short Narratives or Descriptions. Familiar Letters.	Review past work. Syntax. Changes of Construction. Formation of Simple, Compound and Complex Sentences, Orally and in Writing. Summary of Reading Lessons. Rendering Poetry into Prose.	Review past work. Analysis as in Form C. Analysis and Parsing of Prose and Easy Verse. Business Letters. Summary of Science Lessons. Imaginary Sketches Biographical Sketches.	Review past work. Analysis and Parsing of Verse. Outlines of the History of the English Language. Abstracts of Readings or Lessons. Business Letters. Themes.
HISTORY.						Outlines of Canadian History. Conversational Lectures.	Leading Events of English History	Ancient European History.	Modern European History.	Stuart Period in English History. Canadian History.
NATURAL PHILOSOPHY.									Prop's of Matter. Specific Gravity Barometer. Air Pump, Common Pump, Forcing Pump & Syphon.	Mechanical Powers.
HYGIENE.					Familiar Lectures.	Familiar Lectures.	Familiar Lectures.	Familiar Lectures.	Familiar Lectures.	Familiar Lectures.
ALGEBRA.								1st 4 Rules. Easy Simple Equations	To end of Fractions.	Simple Equations. Easy Quadratics
GEOMETRY.									To end of Book I.	To end of Book III.
MENSURATION.								Definitions and Areas of Rectangles.	Rectilinear Figures and Rectilinear Solids.	Circle, Sphere, Cylinder and Cone.
BOOK-KEEPING.								Cash Transactions.	Assets and Liabilities. Single Entry Book-keeping.	Book-keeping by Double Entry.
DRILL AND GYMNASIICS.					Dressing with Intervals. Extension Motions. File Marching.	Standing at Ease, Turning, Saluting.	Balance Step, Marking Time, Marching.	Same as preceding Class.	Simple Company Formation.	Same as preceding Class.

1. Defi
ne
2. Giv
3. Na
4. Na
N
tl
5. Wl
I
6. Dr
l

Appendix.

c
c
c

80



Financial Statements.

Annual General Statement of Receipts and Expenditures for Public School Purposes, City of Toronto, for the year ending December 31st, 1876. Published, as required by Statute, by the Public School Board for said City.

INCOME FOR 1876.

Cash on hand.....	\$71 75
Legislative Appropriation for 1876	6,889 00
Municipal Assessment for General School purposes...	68,625 05
Debentures issued for New School Sites and Buildings	80,000 00
G. Worrell, Instalment on Park Lot.....	665 50
Fees received for non-resident pupils	27 00
Total Income for 1876	\$156,278 30

EXPENDITURE FOR 1876.

1. Paid City Treasurer amount overdrawn, 1875.....	\$3,074 05
2. New School Sites, School Buildings, Furniture, Architects' Fees, &c., as per statement in detail, (See Appendix A.)	65,350 09
3. Repairs, Alterations and Improvements at the several Schools, as per statement in detail. (See Appendix B.).....	3,321 04
4. Salaries of Officers, Teachers and Caretakers, as per statement in detail. (See Appendix C.).....	51,687 28
5. Premiums of Insurance, British America Co. \$61 00	
Western Co	61 00
Isolated Risk Co	34 50
North British Co	95 00
Northern Co	112 00
Stadacona Co	40 00
	403 50
6. Fuel for Schools, Board Room, and Offices :	
P. Burns, Wood, per Contract.....	\$1,891 05
W. H. Knowlton.....	354 37
Sundry persons cutting Wood.....	454 58
	2,700 00
Carried forward.....	\$126,535 96

<i>Brought forward</i>	\$126,535 96
7. Printing and Advertising, as per statement in detail. (See Appendix D.).....	1,127 25
8. School Furniture, Stationery and School Requisites, as per statement in detail. (See Appendix E.)	2,278 01
9. Miscellaneous Expenditure, as per statement in detail. (See Appendix F.).....	1,090 20
10. Cash in hands of Secretary	\$4 01
Cash in Bank	665 50
	669 51
Total Expenditure for 1876	\$131,700 93
Balance to 1877	24,577 37
	<u>\$156,278 30</u>

Certified,

W. C. WILKINSON,

Secretary.

January, 1877.

Audited and Approved,

WM. ANDERSON.

APPENDIX A.

Statement in detail of Expenditure on Account of New School Sites and School Buildings, from 31st December, 1875, to 31st December, 1876, given as one sum in Item No. 2, Annual General Statement.

DUFFERIN SCHOOL.

WARD OF ST. DAVID.

Crosier & Campbell, Masonry Contract.....	\$8,890 00
" " Extras.....	47 60
Daly Bros., on account Carpenter's Contract	6,400 00
J. Bilton, on account Painters and Glaziers' Contract...	645 00
F. A. Bowden, Plasterer's Contract in full	1,020 00
G. Watson, on account Galvanized Iron Contract	300 00
R. Rennie, on account Slater's Contract	450 00
J. Ritchie & Son, on account Plumbers' Contract	100 00
Langley, Langley & Burke, on account Architects' Commission	400 00
Wadsworth, Unwin & Co., Surveying Site	8 00
City Treasurer, Cost of Drain.....	27 85

Carried forward \$18,288 45

Brought forward \$18,288 45

RYERSON SCHOOL.

WARD OF ST. PATRICK.

C. L. Denison, Building Site	\$6,817 50
T. W. Greaves, on account Masonry Contract.....	7,040 00
T. & W. Clements, on account Carpenters' Contract..	6,500 00
J. Dill, on account Painter and Glazier's Contract	400 00
Balmer Bros., on account Plasterers' Contract.....	900 00
Douglas Bros., on account Galvanized Iron Contract ...	600 00
G. Duthie, on account Slater's Contract.....	550 00
G. Harding, on account Plumber's Contract.....	100 00
E. Beckett, on account Iron Contract.....	250 00
Champ & Cowan, on account Felt Roofing Contract ...	230 00
Stewart & Strickland, on account Architects' Commission	450 00
Wadsworth, Unwin & Co., Surveying Site	14 00
City Treasurer, Cost of Drain	27 85
	<hr/>
	23,879 35

WELLESLEY SCHOOL.

WARD OF ST. JOHN.

Hagan & Bryce, Masonry Contract.....	\$6,935 00
“ “ Extras	43 00
R. Dimis, Carpenter and Felt Roofing Contract	5,725 00
“ “ Extras	137 32
Smith & Mahaffy, on account Painters and Glaziers' Contract	225 00
J. Poucher, on account Plasterer's Contract	890 00
H. Cooley, on account Galvanized Iron Contract	429 00
G. Duthie, on account Slater's Contract.....	200 00
W. J. Gibson, Plumber's Contract	80 00
“ “ Extras	3 00
McCaw & Lennox, on account Architects' Commission.	650 00
	<hr/>
	15,317 32

GIVINS STREET SCHOOL.

WARD OF ST. STEPHEN.

C. Witchell, Masonry Contract	\$2,930 00
“ “ Extras	73 50
G. Burry, on account of Carpenter's Contract.....	2,400 00
Smith & Mahaffy, on account Painters and Glaziers' Contract	150 00
Hynes Bros., Jr., on account Plasterers' Contract	470 00
Douglas Bros., on account Galvanized Iron Contract...	250 00
	<hr/>
Carried forward	\$6,273 50 \$57,485 12

APPENDIX.

<i>Brought forward</i>	\$6,273 50	\$57,485 12
E. Beckett, on account Iron Work Contract.....	250 00	
Champ & Cowan, on account Felt Roofing Contract ...	132 00	
Stewart & Strickland, on account Architects' Commission	250 00	
Wadsworth, Unwin & Co., Surveying Site	8 00	
	<hr/>	6,913 50
LEGAL EXPENSES, SCHOOL FURNITURE, &c.		
Rose, Macdonald & Merritt, for services during 1874...	\$222 77	
R. Lewis & Son, Bells for new Schools	441 25	
C. Potter, Desks for New Room, Park School... ..	198 60	
" " Winchester Street School	73 00	
J. Carlyle, Teachers' Desks and Chairs, New Room, Park School	15 85	
	<hr/>	951 47
Total of Item, No. 2.....	\$65,350 09	

APPENDIX B.

Statement in detail for Repairs, Alterations and Improvements, at the several Schools during 1876, given as one sum in Item No. 3, in Annual General Statement.

GIVINS STREET SCHOOL.

W. Berry, Removing Night Soil.....	\$40 00	
J. C. Swait, Tinsmith Work	2 57	
	<hr/>	42 57

NIAGARA STREET SCHOOL.

G. Wilcock, Carpenter Work, Planking Yard, &c	\$369 75	
T. Rickeard, Repairs	4 36	
Faircloth & Son, Re-glazing.....	9 60	
J. Matson, Plastering	10 25	
J. Smith, Plastering	2 10	
Moutgomery & Field, Plastering.....	3 50	
	<hr/>	399 56

BATHURST STREET SCHOOL.

J. Nelson, Carpenter Work, Planking Yard, &c	\$215 90	
Wadsworth, Unwin & Co., Surveying School Site.....	10 00	
C. Foot, Removing Night Soil.....	26 42	
Plews & Kennedy, Repairing Pump	3 25	
M. Hozack, Tinsmith Work.....	3 65	
	<hr/>	
<i>Carried forward</i>	\$259 22	\$442 13

APPENDIX.

7

<i>Brought forward</i>	\$259 22	\$442 13
T. Rickeard, Repairs.....	1 95	
J. Matson, Plastering.....	6 25	
A. M. Brown, Re-glazing	3 60	
		271 02

BORDEN STREET SCHOOL.

J. Nelson, Carpenter Work, Constructing Wood Sheds, &c	\$171 20	
Faircloth & Son, Re-glazing.....	12 20	
		183 40

PHOEBE STREET SCHOOL.

T. Rickeard, Carpenter Work	\$170 97	
G. Wilcock, " "	20 05	
J. Nelson, " "	1 55	
M. Hozack, Tinsmith Work..	23 80	
J. C. Swait, " "	16 12	
T. M. Buley, Painting and Re-glazing	13 76	
A. M. Brown, Re-glazing	3 65	
J. Matson, Plastering	13 65	
C. Foot, Removing Night Soil.....	43 95	
		307 20

JOHN STREET SCHOOL.

G. Wilcock, Carpenter Work	\$193 38	
T. Rickeard, " "	5 86	
A. M. Brown, Re-glazing	3 40	
J. C. Swait, Tinsmith Work..	1 50	
		204 14

YORK STREET SCHOOL.

T. Rickeard, Carpenter Work	\$35 67	
G. Wilcock, " "	12 21	
J. Nelson, Repairing School Desks.....	7 50	
C. Shipway, Repairing Gongs	9 75	
A. M. Brown, Painting and Re-glazing.....	23 10	
J. C. Swait, Tinsmith Work.....	4 68	
		92 91

ELIZABETH STREET SCHOOL.

J. Stephens, Carpenter Work	\$126 89	
T. Rickeard, " "	2 43	
R. Phillips, Whitewashing	10 00	
Plews & Kennedy, Repairing Pump	3 50	
J. C. Swait, Tinsmith Work.....	1 25	
A. M. Brown, Re-glazing	1 00	
		145 07

Carried forward \$1,645 87

Brought forward..... \$1,645 87

WELLESLEY SCHOOL.

J. Eilton, Re-glazing	\$11 25	
J. Dill, Re-glazing	8 45	
T. Rickeard, Repairs	1 40	
J. C. Swait, Tinsmith Work.....	1 25	
		<hr/> 22 35

LOUISA STREET SCHOOL.

J. Stephens, Carpenter Work	\$43 49	
T. Rickeard, " "	4 57	
D. Tolliver, Whitewashing	20 00	
		<hr/> 68 06

CHURCH STREET SCHOOL.

J. Stephens, Carpenter Work	\$34 08	
G. Wilcock, Repairs	1 50	
H. Tollis, Planting Trees in front of School.....	17 50	
W. Collett, Tree Poxes, &c	39 62	
T. A. Hastings, Sodding, &c	27 00	
A. M. Brown, Re-glazing	3 90	
		<hr/> 123 60

VICTORIA STREET SCHOOL.

S. Pettigrew, Carpenter Work.....	\$142 76	
G. Wilcock, " "	18 31	
T. Rickeard, " "	21 97	
T. Jennings, Plastering.....	12 50	
M. Hozack, Galvanized Iron Roof	104 20	
J. C. Swait, new Stove and Tinsmith Work.....	22 52	
Faircloth & Son, Re-glazing and Whitewashing	11 75	
Ritchie & Son, Repairing Water Pipes	8 55	
A. M. Erown, Re-glazing	4 90	
H. Smallpiece, Removing Night Soil	56 25	
		<hr/> 403 71

GEORGE STREET SCHOOL.

S. Pettigrew, Carpenter Work.....	\$60 54	
G. Wilcock, " "	2 75	
J. Kidd, Painting, Glazing and Whitewashing.....	48 00	
Faircloth & Son, Re-glazing	2 45	
A. Hamilton, "	2 00	
Plews & Kennedy, Repairing Pump	12 55	
		<hr/> 128 29

Carried forward..... \$2,391 88

APPENDIX.

9

Brought forward\$2,391 88

WINCHESTER STREET SCHOOL.

J. T. Coatsworth, Carpenter Work.....	\$22 79	
T. Rickeard, " "	7 95	
Faircloth & Son, Re-glazing	19 20	
J. Kidd, Whitewashing.....	15 00	
		64 94

PARLIAMENT STREET SCHOOL.

W. Carlyle, Carpenter Work	\$28 24	
J. Nelson, Repairing Desks	23 40	
Faircloth & Son, Re-glazing.....	12 25	
Sundries	3 51	
		67 40

PALACE STREET SCHOOL.

W. Carlyle, Carpenter Work	\$86 43	
T. Rickeard, " "	2 15	
Faircloth & Son, Painting and Re-glazing	29 30	
		117 88

PARK SCHOOL.

J. T. Coatsworth, Carpenter Work.....	\$140 24	
Faircloth & Son, Painting and Whitewashing.....	44 55	
J. C. Swait, Tinsmith Work	3 70	
		188 49

LESLIEVILLE SCHOOL.

Nicholson Bros., Carpenter Work		3 85
---------------------------------------	--	------

MISCELLANEOUS.

G. Boxall, Blackleading Stoves, Varnishing Stove Pipes, Replacing old Pipes, Zinc, &c., in all the Schools.	\$232 63	
F. A. Bowden, Cement Blackboards at Sundry Schools	124 25	
E. Bell, " " " "	84 59	
W. Robins, Repairs at Sundry Schools.....	19 30	
E. Merritt, Reglazing at Sundry Schools	6 50	
Sweeping Chimneys	8 80	
Sundry Small Repairs.....	10 53	
		486 60
Total of Item No. 3		<u>\$3,321 04</u>

APPENDIX C.

Statement in detail of Salaries of Officers, Teachers and Caretakers, paid during 1876, as given in one sum in Item No. 4, in Annual General Statement.

OFFICERS, &c.

James Hughes, Inspector.....	\$1,700 00
W. C. Wilkinson, Secretary.....	1,200 00
John T. Thompson, Truant Officer	700 00
W. Anderson, Auditor	25 00
W. B. McMurrich, Solicitor.....	552 61
W. N. Biggar, Office Messenger and Caretaker	500 00
4 Examiners, (Combined Examination)	160 00
19 Caretakers	2,135 33
	<u>\$6,972 94</u>

MALE TEACHERS.

Richard Lewis, First Division.....	\$1,000 00
Samuel McAllister, " "	995 00
John Campbell, Second "	892 50
Robert W. Doan " "	900 00
Martin Gill, " "	900 00
Adam F. McDonald, " "	894 00
James Anderson, Third "	850 00
Isaac J. Birchard, " "	832 00
Henry Brown, " "	720 00
Levi Clark, " "	843 00
Samuel Coyne, " "	850 00
Andrew Hendry, " "	850 00
Robert McCausland, " "	835 00
Peter G. Meldrum, " "	850 00
Francis S. Spence, " "	839 50
J. A. Wismer, " "	758 66
John Phillips, Fourth "	750 00
Albert R. Pyne, " "	750 00
A. Morrison, Occasional Teaching	409 00
A. P. Perrin, Music Teacher	318 75
H. F. Sefton, "	325 00
	<u>\$16,362 41</u>

FEMALE TEACHERS.

Miss C. M. Churchill, First Division.....	\$488 50
" Olivia Dunn, "	500 00
" Georgina Round, "	500 00
	<u>\$1,488 50</u>
Carried forward	\$23,335 35

APPENDIX.

11

		<i>Brought forward</i>	\$1,488 50	\$23,335 35
Miss Margaret Buik	Second Division	500 00	
" Charlotte Fraser,	"	456 00	
" Elizabeth Kennedy,	"	449 00	
" M. J. Keown,	"	500 00	
" Margaret Sutherland,	"	450 00	
" E. A. Williams,	"	500 00	
" Mary A. Worth,	"	500 00	
		Third Division.....	392 50	
" Annie Armstrong,	"	398 00	
" Annie I. Cameron,	"	399 50	
Mrs. Annie Carey,	"	392 50	
Miss Margaret Coyne,	"	390 50	
" Carrie Gray	"	361 50	
" Emma Gray,	"	500 00	
" Susan Hamilton,	"	400 00	
" S. M. Hamilton,	"	390 00	
" Agnes Kelloch,	"	400 00	
" Mary A. Kennedy,	"	389 58	
" Kate Lemon,	"	284 50	
" Sarah McBride,	"	500 00	
" Sarah McCreight,	"	79 00	
" Edith O'Flaherty,	"	498 00	
" Jessie Rogers,	"	400 00	
Mrs. Kate Rowland,	"	396 00	
Miss Kate A. Scarlett,	"	500 00	
" Jane Smith,	"	500 00	
" Charlotte Spotten,	"	397 50	
Mrs. Kate Stevenson,	"	400 00	
Miss Georgina Stokes,	"	500 00	
" Rebecca Thompson,	"	348 50	
		Fourth Division.....	349 00	
" Kate Bentley,	"	350 00	
" Jessie Campbell,	"	350 00	
" Annie Chambers,	"	348 50	
" Annie A. Cruise,	"	349 00	
" Helen Fraser,	"	349 00	
" Margaret Fraser,	"	350 00	
Mrs. E. A. Green,	"	341 00	
Miss Mary Gunn,	"	312 50	
" Maggie Hunter,	"	350 00	
" Phebe J. Johnston,	"	350 00	
" Emma Kennedy,	"	350 00	
Mrs. Lillie Leadley,	"	336 00	
" Emma Lilly,	"		
		<i>Carried forward</i>	\$18,197 08	\$23,335 35

<i>Brought forward</i>		\$18,197 08 \$23,335 35
Mrs. McBrien,	Fourth Division	306 84
Miss Susan McKenzie,	"	316 75
" Margaret Newton,	"	331 60
" Sarah Riddell,	"	204 16
" Harriet Somerville,	"	349 50
" Maria Woods,	"	350 00
Mrs. J. N. Agnew,	Fifth Division.....	296 00
Miss Thomasina Carlyle,	"	300 00
" Eliza J. Church,	"	299 50
Mrs. M. A. Fitzgerald,	"	300 00
Miss Ada Frisby,	"	300 00
" Alice Freeman,	"	300 00
" Sarah J. Hamilton,	"	300 00
" HESSIE HOW,	"	300 00
" Louisa Lumsden,	"	298 00
Mrs. M. H. McDonald,	"	300 00
Miss Isabella Mearns,	"	300 00
Mrs. G. Riches,	"	297 50
Miss Margaret Riddell,	"	300 00
" Ada Rowell,	"	300 00
" E. S. G. Scarlett,	"	300 00
" Amelia Sims,	"	295 00
" Bertha Sims,	"	300 00
" Minnie B. Smith,	"	300 00
" Carrie J. Watson,	"	300 00
" Mary A. Westman,	"	300 00
" Lizzie Wills	"	294 50
" Kate M. Allen,	"	50 00
Mrs. M. J. Charlton,	"	50 00
Miss C. J. Jackson,	"	121 00
" M. Sefton,	"	147 00
Mrs. J. S. Arthurs,	"	272 50
Miss J. Gunn,	"	150 00
" B. Gunn, Drawing Teacher.....		495 00
Occasional Teachers		730 50
		<u>28,351 93</u>
Total of Item No. 4.....		<u>\$51,687 28</u>

APPENDIX D.

Statement in detail of Printing and Advertising, as given in one sum in Item No. 7, in Annual General Statement.

Globe, Advertising	\$64 50
Leader, "	71 00
Mail, "	69 50
Sun, "	29 00
Advertiser, "	6 00
Hill & Son, Printing fortnightly Minutes	185 50
" Inspector's Annual Report, By-Laws, Regulations, &c... ..	260 50
" Examination Papers, Notices, Circulars and General Printing	321 25
Rolph, Smith & Co., Certificates of Honor	120 00
Total of Item No. 7	<u>\$1,127 25</u>

APPENDIX E.

Statement in detail of Item No. 8, in Annual General Statement, for School Furniture, Stationery and School Requisites.

R. Hay & Co., Desks for Junior Division Pupils, per Contract...	\$1,500 00
" Ink Wells, &c	27 04
J. Carlyle, Desks and Tables, for Teachers	30 50
R. Lewis & Son, School Hat Hooks	16 88
P. Paterson & Son, Shovels, Evaporating Pots, &c.....	22 37
G. Boxall, Tin Cups, &c.....	34 86
W. Sturrock, Pens, Ink, Crayons, &c.....	252 69
Buntin Bros. & Co., Paper, &c.....	77 00
Rowsell & Hutchison, Stationery	179 08
People's Depository, Prize Books	105 79
C. Potter, Thermometers	9 50
Oxalic Acid, \$6, Directory, \$2.....	8 00
Sundry small requisites.....	14 30
Total of Item No. 8.....	<u>\$2,278 01</u>

APPENDIX F.

Details of Item No. 9, given as one sum in Annual General Statement of Receipts and Expenditure, viz.: Miscellaneous Expenditure.

Trustee Elections, Returning Officers' Fees, Rent of Booths, &c...	\$258 20
Special Election, St. George's Ward	26 00
Entrance Examinations to Collegiate Institute.....	137 35
J. G. Owens, Engrossing Resolution to Walter S. Lee, Esq., retiring Chairman	25 00
J. Bailey, One Year's Rent, School Room, Huron Street	250 00
E. F. Hutchins, Architect, preparing Plans of School Buildings...	192 00
R. Hay & Co., Desk, &c., for Board Room	46 50
Gas account for year	26 00
J. T. Coatsworth, Removing Desks, Blackboards, &c., to Sundry Schools	19 20
Sites and Buildings Committee Expenses, Annual Inspection of School premises	20 00
Postage, Telegrams, and Post Office Boxes	19 50
Cab Hire, Committees, &c.....	23 75
Cartage, School Furniture at sundry times	22 95
Janitor, Shaftesbury Hall, Annual Meeting.....	5 00
Sundry small payments.....	18 75
Total of Item No. 9.....	<u>\$1,090 20</u>

SECRETARY'S VALUATION OF SCHOOL
PROPERTY.

*Secretary's Statement of the Estimated Value of the School Premises,
Sites, Buildings, Furniture, &c., belonging to the Public School
Board of the City of Toronto, at the 31st December, 1876, viz :*

1. WARD OF ST. DAVID—	
The Park School	\$11,500 00
Parliament St. School.....	13,000 00
Winchester St. School.....	12,000 00
Dufferin School.....	29,000 00
	\$65,500 00
2. WARD OF ST. THOMAS—	
George St. School	11,000 00
3. WARD OF ST. LAWRENCE—	
Palace St. School.....	\$9,000 00
Leslieville School.....	4,000 00
	13,000 00
4. WARD OF ST. JAMES—	
Victoria St. School	\$15,000 00
Church St. School	13,000 00
	28,000 00
5. WARD OF ST. GEORGE—	
John St. School	15,000 00
6. WARD OF ST. ANDREW—	
York St. School, Offices and Board Room...	\$20,000 00
Niagara St. School	12,000 00
	32,000 00
7. WARD OF ST. JOHN—	
Louisa St. School	\$12,000 00
Elizabeth St. School	9,000 00
Wellesley School.....	32,000 00
	53,000 00
Carried forward	\$217,500 00

APPENDIX.

COLLECTION

<i>Brought forward</i>		\$217,500 00
8. WARD OF ST. PATRICK—		
Phoebe St. School	\$15,000 00	
Borden St. School	6,500 00	
Ryerson School	29,000 00	50,500 00
9. WARD OF ST. STEPHEN—		
Bathurst St. School	10,000 00	
Givins St. School	\$11,500 00	
School Site, Lake View Avenue	3,000 00	24,500 00
Furniture, School Apparatus, &c., estimated at, say		22,500 00
Total		\$315,000 00

Toronto, Jan. 1877.

(Certified,)

W. C. WILKINSON,
Secretary.