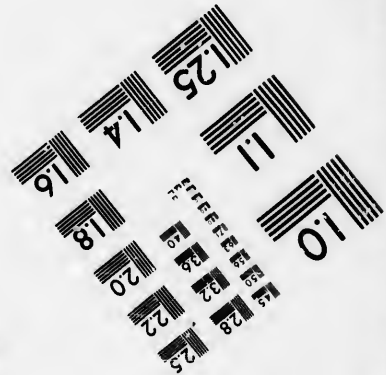
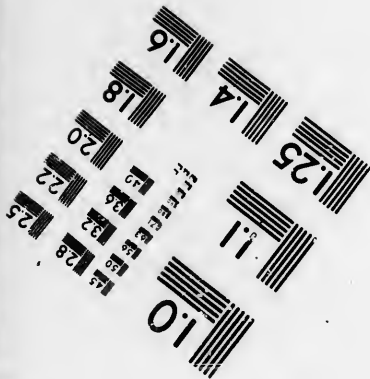
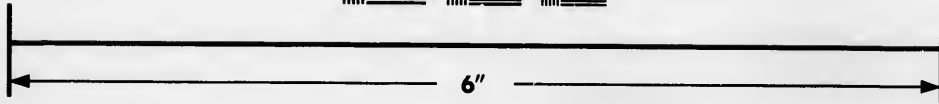
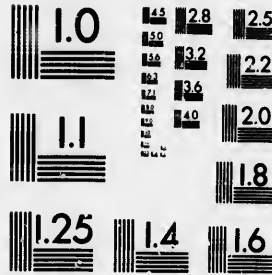


**IMAGE EVALUATION
TEST TARGET (MT-3)**



**Photographic
Sciences
Corporation**

23 WEST MAIN STREET
WEBSTER, N.Y. 14580
(716) 872-4503

28
25
22
20
18

**CIHM/ICMH
Microfiche
Series.**

**CIHM/ICMH
Collection de
microfiches.**



Canadian Institute for Historical Microreproductions / Institut canadien de microreproductions historiques

10
51

© 1986

Technical and Bibliographic Notes/Notes techniques et bibliographiques

The Institute has attempted to obtain the best original copy available for filming. Features of this copy which may be bibliographically unique, which may alter any of the images in the reproduction, or which may significantly change the usual method of filming, are checked below.

L'Institut a microfilmé le meilleur exemplaire qu'il lui a été possible de se procurer. Les détails de cet exemplaire qui sont peut-être uniques du point de vue bibliographique, qui peuvent modifier une image reproduite, ou qui peuvent exiger une modification dans le méthode normale de filmage sont indiqués ci-dessous.

- | | |
|--|--|
| <input type="checkbox"/> Coloured covers/ Couverture de couleur | <input type="checkbox"/> Coloured pages/ Pages de couleur |
| <input type="checkbox"/> Covers damaged/ Couverture endommagée | <input type="checkbox"/> Pages damaged/ Pages endommagées |
| <input type="checkbox"/> Covers restored and/or laminated/ Couverture restaurée et/ou pelliculée | <input type="checkbox"/> Pages restored and/or laminated/ Pages restaurées et/ou pelliculées |
| <input type="checkbox"/> Cover title missing/ Le titre de couverture manque | <input checked="" type="checkbox"/> Pages discoloured, stained or foxed/ Pages décolorées, tachetées ou piquées |
| <input type="checkbox"/> Coloured maps/ Cartes géographiques en couleur | <input type="checkbox"/> Pages detached/ Pages détachées |
| <input type="checkbox"/> Coloured ink (i.e. other than blue or black)/ Encre de couleur (i.e. autre que bleue ou noire) | <input checked="" type="checkbox"/> Showthrough/ Transparence |
| <input type="checkbox"/> Coloured plates and/or illustrations/ Planches et/ou illustrations en couleur | <input checked="" type="checkbox"/> Quality of print varies/ Qualité inégale de l'impression |
| <input type="checkbox"/> Bound with other material/ Relié avec d'autres documents | <input type="checkbox"/> Includes supplementary material/ Comprend du matériel supplémentaire |
| <input type="checkbox"/> Tight binding may cause shadows or distortion along interior margin/ La reliure serrée peut causer de l'ombre ou de la distorsion le long de la marge intérieure | <input type="checkbox"/> Only edition available/ Seule édition disponible |
| <input type="checkbox"/> Blank leaves added during restoration may appear within the text. Whenever possible, these have been omitted from filming/ Il se peut que certaines pages blanches ajoutées lors d'une restauration apparaissent dans le texte, mais, lorsque cela était possible, ces pages n'ont pas été filmées. | <input type="checkbox"/> Pages wholly or partially obscured by errata slips, tissues, etc., have been refilmed to ensure the best possible image/ Les pages totalement ou partiellement obscurcies par un feuillet d'errata, une pelure, etc., ont été filmées à nouveau de façon à obtenir la meilleure image possible. |
- Additional comments:/ [Printed ephemera] 1 sheet (verso blank) There are some creases in the middle of pages.
Commentaires supplémentaires:

This item is filmed at the reduction ratio checked below/
Ce document est filmé au taux de réduction indiqué ci-dessous.

| | | | | | | | | | | | |
|-----|-----|-----|-----|-----|-----|-----|-----|-----|-----|-----|-----|
| 10X | 12X | 14X | 16X | 18X | 20X | 22X | 24X | 26X | 28X | 30X | 32X |
| | | | | | | | ✓ | | | | |

The copy filmed here has been reproduced thanks to the generosity of:

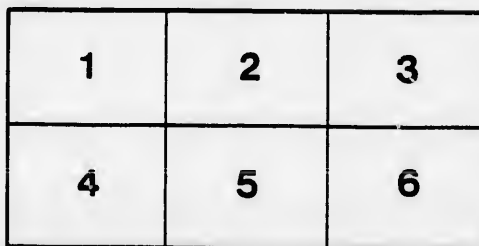
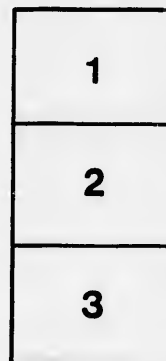
D. B. Weldon Library
University of Western Ontario
(Regional History Room)

The images appearing here are the best quality possible considering the condition and legibility of the original copy and in keeping with the filming contract specifications.

Original copies in printed paper covers are filmed beginning with the front cover and ending on the last page with a printed or illustrated impression, or the back cover when appropriate. All other original copies are filmed beginning on the first page with a printed or illustrated impression, and ending on the last page with a printed or illustrated impression.

The last recorded frame on each microfiche shall contain the symbol \rightarrow (meaning "CONTINUED"), or the symbol ∇ (meaning "END"), whichever applies.

Maps, plates, charts, etc., may be filmed at different reduction ratios. Those too large to be entirely included in one exposure are filmed beginning in the upper left hand corner, left to right and top to bottom, as many frames as required. The following diagrams illustrate the method:



L'exemplaire filmé fut reproduit grâce à la générosité de:

D. B. Weldon Library
University of Western Ontario
(Regional History Room)

Les images suivantes ont été reproduites avec le plus grand soin, compte tenu de la condition et de la netteté de l'exemplaire filmé, et en conformité avec les conditions du contrat de filmage.

Les exemplaires originaux dont la couverture en papier est imprimée sont filmés en commençant par le premier plat et en terminant soit par la dernière page qui comporte une empreinte d'impression ou d'illustration, soit par le second plat, selon le cas. Tous les autres exemplaires originaux sont filmés en commençant par la première page qui comporte une empreinte d'impression ou d'illustration et en terminant par la dernière page qui comporte une telle empreinte.

Un des symboles suivants apparaîtra sur la dernière image de chaque microfiche, selon le cas: le symbole \rightarrow signifie "A SUIVRE", le symbole ∇ signifie "FIN".

Les cartes, planches, tableaux, etc., peuvent être filmés à des taux de réduction différents. Lorsque le document est trop grand pour être reproduit en un seul cliché, il est filmé à partir de l'angle supérieur gauche, de gauche à droite, et de haut en bas, en prenant le nombre d'images nécessaire. Les diagrammes suivants illustrent la méthode.

BY-LAW No. 134.

To appropriate certain sums of money to improve certain County Roads :

Passed 22nd day of June, 1866.

Whereas it is expedient and necessary to expend certain sums of money for the improvement of certain County Roads hereinafter mentioned!

I.—Be it therefore enacted by the corporation of the County of Norfolk, in Council assembled, that the sum of Fifty Dollars is hereby appropriated to repair the County Road opposite the 5th concession of Woodhouse, to meet a similar grant made by the County of Haldimand; and that Thomas Jacques, Esquire, be and he is hereby appointed commissioner to expend the same; and the further sum of Twenty-six Dollars and Forty-two Cents is hereby appropriated to repair a portion of the same road lying opposite Ward No. 1 of the Township of Walpole, to meet a similar grant made by the aforesaid County of Haldimand, and that Robert Ward is hereby appointed commissioner to expend the same.

//

II.—And be it further enacted by the authority aforesaid, that the sum of Forty Dollars is hereby appropriated to be expended in the repair of the two bridges opposite to the 4th and 5th concessions of Townsend, when a like sum shall have been granted by the County of Haldimand, and that John Barber, Esquire, be and he is hereby appointed a commissioner to expend the same; And a further sum of Forty Dollars is also appropriated to be expended in the repair of a bridge over the Nanticoke opposite the 13th and 14th concessions of the Township of Townsend, when a grant for a similar amount has been made for the County of Haldimand, and that George Upper, Esquire, is hereby appointed commissioner to expend the same.

675

III.—And be it further enacted by the authority aforesaid, that the sum of ~~Twenty~~^{Twenty-five} Dollars be granted out of the funds of the County, to be expended in improving the Townline between the Townships of Middleton, Houghton and Walsingham, south of the Talbot Road, as far as Glenmeyer, and that Andrew Harvey and J. Ostrander, Esquires, be and they are hereby appointed commissioners for expending the same.

IV.—And be it further enacted by the authority aforesaid, that the sum of One Hundred and Seventy-five Dollars is hereby granted from the funds of this County, to be expended on the county road between the Counties of Elgin and Norfolk, which with the sum of Twenty-five Dollars granted by By-Law passed on the 22nd June, 1865, and not expended, making in all the sum of Two Hundred Dollars, to meet a similar grant for a like sum made by the County of Elgin; and that S. K. Garum and J. Ostrander, Esquires, be and they are hereby appointed commissioners to expend the same.

V.—And be it further enacted by the authority aforesaid, that the Warden be and he is hereby authorized to draw his check on the County Treasurer for the several amounts appropriated, in favor of the parties holding the certificates of the several commissioners that the work has been performed, and that the said commissioners do report to this Council the manner in which the work has been performed.

Passed in open Council, on Friday, the 22nd day of June, 1866.

(Signed) DANIEL MATTHEWS, Warden.

[L.S.]

Attest,
JAMES ERMATINGER,
County Clerk, County of Norfolk.

The above is a true copy from the Minutes of the County Council of the County of Norfolk

1866

James Ermatinger
Co. Clerk

675

