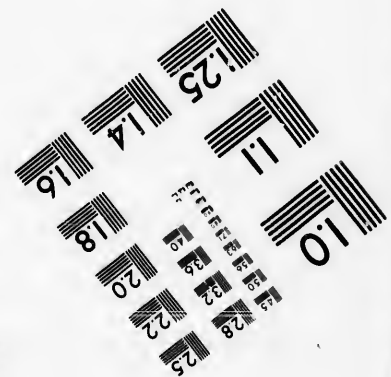
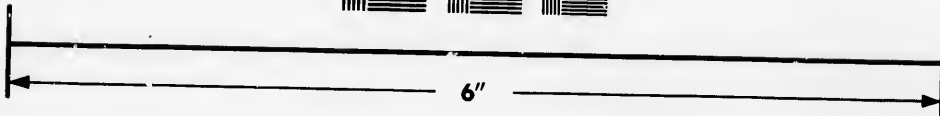
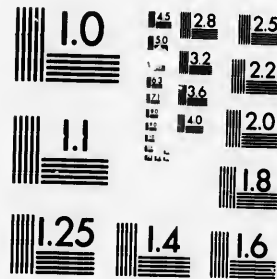


**IMAGE EVALUATION
TEST TARGET (MT-3)**



**Photographic
Sciences
Corporation**

23 WEST MAIN STREET
WEBSTER, N.Y. 14580
(716) 872-4503



**CIHM/ICMH
Microfiche
Series.**

**CIHM/ICMH
Collection de
microfiches.**



Canadian Institute for Historical Microreproductions / Institut canadien de microreproductions historiques

© 1986



Technical and Bibliographic Notes/Notes techniques et bibliographiques

The Institute has attempted to obtain the best original copy available for filming. Features of this copy which may be bibliographically unique, which may alter any of the images in the reproduction, or which may significantly change the usual method of filming, are checked below.

L'Institut a microfilmé le meilleur exemplaire qu'il lui a été possible de se procurer. Les détails de cet exemplaire qui sont peut-être uniques du point de vue bibliographique, qui peuvent modifier une image reproduite, ou qui peuvent exiger une modification dans la méthode normale de filmage sont indiqués ci-dessous.

- | | |
|--|--|
| <input type="checkbox"/> Coloured covers/
Couverture de couleur | <input type="checkbox"/> Coloured pages/
Pages de couleur |
| <input type="checkbox"/> Covers damaged/
Couverture endommagée | <input type="checkbox"/> Pages damaged/
Pages endommagées |
| <input type="checkbox"/> Covers restored and/or laminated/
Couverture restaurée et/ou pelliculée | <input type="checkbox"/> Pages restored and/or laminated/
Pages restaurées et/ou pelliculées |
| <input type="checkbox"/> Cover title missing/
Le titre de couverture manque | <input checked="" type="checkbox"/> Pages discoloured, stained or foxed/
Pages décolorées, tachetées ou piquées |
| <input type="checkbox"/> Coloured maps/
Cartes géographiques en couleur | <input type="checkbox"/> Pages detached/
Pages détachées |
| <input type="checkbox"/> Coloured ink (i.e. other than blue or black)/
Encre de couleur (i.e. autre que bleue ou noire) | <input checked="" type="checkbox"/> Showthrough/
Transparence |
| <input type="checkbox"/> Coloured plates and/or illustrations/
Planches et/ou illustrations en couleur | <input type="checkbox"/> Quality of print varies/
Qualité inégale de l'impression |
| <input type="checkbox"/> Bound with other material/
Relié avec d'autres documents | <input type="checkbox"/> Includes supplementary material/
Comprend du matériel supplémentaire |
| <input type="checkbox"/> Tight binding may cause shadows or distortion
along interior margin/
La reliure serrée peut causer de l'ombre ou de la
distorsion le long de la marge intérieure | <input type="checkbox"/> Only edition available/
Seule édition disponible |
| <input type="checkbox"/> Blank leaves added during restoration may
appear within the text. Whenever possible, these
have been omitted from filming/
Il se peut que certaines pages blanches ajoutées
lors d'une restauration apparaissent dans le texte,
mais, lorsque cela était possible, ces pages n'ont
pas été filmées. | <input type="checkbox"/> Pages wholly or partially obscured by errata
slips, tissues, etc., have been refilmed to
ensure the best possible image/
Les pages totalement ou partiellement
obscurcies par un feuillet d'errata, une pelure,
etc., ont été filmées à nouveau de façon à
obtenir la meilleure image possible. |
- Additional comments:/ [Printed ephemera] [4] p.
Commentaires supplémentaires:

This item is filmed at the reduction ratio checked below/
Ce document est filmé au taux de réduction indiqué ci-dessous.

10X	12X	14X	16X	18X	20X	22X	24X	26X	28X	30X	32X
						✓					

The copy filmed here has been reproduced thanks to the generosity of:

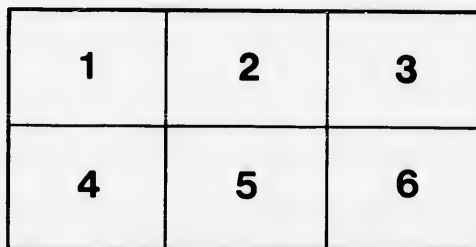
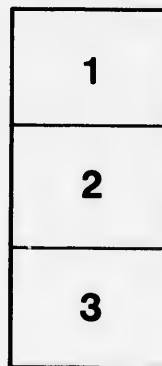
Library of the Public
Archives of Canada

The images appearing here are the best quality possible considering the condition and legibility of the original copy and in keeping with the filming contract specifications.

Original copies in printed paper covers are filmed beginning with the front cover and ending on the last page with a printed or illustrated impression, or the back cover when appropriate. All other original copies are filmed beginning on the first page with a printed or illustrated impression, and ending on the last page with a printed or illustrated impression.

The last recorded frame on each microfiche shall contain the symbol → (meaning "CONTINUED"), or the symbol ▼ (meaning "END"), whichever applies.

Maps, plates, charts, etc., may be filmed at different reduction ratios. Those too large to be entirely included in one exposure are filmed beginning in the upper left hand corner, left to right and top to bottom, as many frames as required. The following diagrams illustrate the method:



L'exemplaire filmé fut reproduit grâce à la générosité de:

La bibliothèque des Archives
publiques du Canada

Les images suivantes ont été reproduites avec le plus grand soin, compte tenu de la condition et de la netteté de l'exemplaire filmé, et en conformité avec les conditions du contrat de filmage.

Les exemplaires originaux dont la couverture en papier est imprimée sont filmés en commençant par le premier plat et en terminant soit par la dernière page qui comporte une empreinte d'impression ou d'illustration, soit par le second plat, selon le cas. Tous les autres exemplaires originaux sont filmés en commençant par la première page qui comporte une empreinte d'impression ou d'illustration et en terminant par la dernière page qui comporte une telle empreinte.

Un des symboles suivants apparaîtra sur la dernière image de chaque microfiche, selon le cas: le symbole → signifie "A SUIVRE", le symbole ▼ signifie "FIN".

Les cartes, planches, tableaux, etc., peuvent être filmés à des taux de réduction différents. Lorsque le document est trop grand pour être reproduit en un seul cliché, il est filmé à partir de l'angle supérieur gauche, de gauche à droite, et de haut en bas, en prenant le nombre d'images nécessaire. Les diagrammes suivants illustrent la méthode.

A Present for the Old Folks



Xmas Spectacles

Why Not ?

Every family buys a present for the Old Folks and the object of this folder is to urge the selection of something useful and sensible.

Jas. Pequegnat & Son
Jewellers and Opticians

STRATFORD,

ONT.

We get our goods from P. 1000

We grind our own Lenses.

In Planning For Elderly People

Have you ever thought what a delightful and useful present a pair of modern spectacles or eyeglasses would make?



Eighty per cent of the people over forty five years of age are troubled with failing vision.

Can *your* parents read and sew as well as they used to—or does reading and sewing fatigue them?

A pair of glasses, properly fitted, would be a constant pleasure and comfort to them. The value of a gift lies in its value to the recipient and if they see you have given the matter a little thought and asked yourself what is best adapted to their requirements it will be appreciated vastly more than the money value.

Skilled Optical Service in eye examination and the furnishing of glasses has grown to be an exact science.

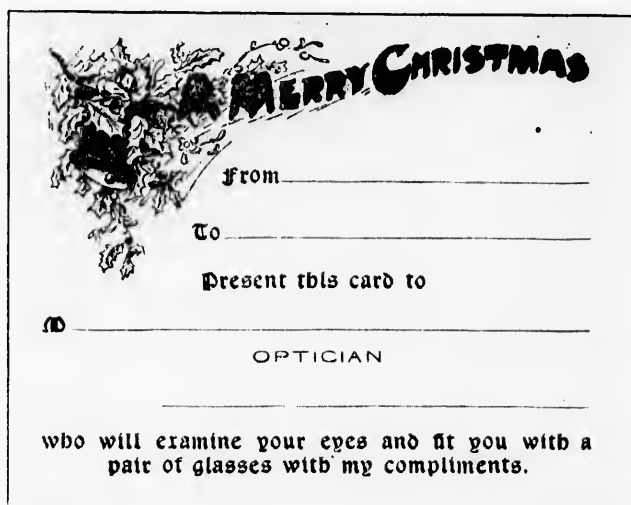
We are thoroughly equipped with the most modern instruments and are competent in every way to make a scientific examination and supply the correct glasses.

We grind our own Lenses.

Presenting the Gift

Our constant aim is to impress upon the public the necessity of having their eyes properly cared for, and we feel sure that our patrons fully appreciate the fact that we hold their eyes and our profession above selfish interests.

We must give the eyes of the recipient of the gift a thorough examination in order to prescribe the correct lenses. Therefore we have devised a system whereby an order on us, in the form of a Christmas card can be used for the presentation. Thus the gift can still be a perfect surprise.



MERRY CHRISTMAS

From _____

To _____

Present this card to _____

OPTICIAN

who will examine your eyes and fit you with a pair of glasses with my compliments.

On the reverse side of this card is an agreement signed by us to examine and supply the correct lenses and to fit them with "Consol-ex" Bonded Spectacles or Eyeglasses. The name "Consol-ex" is stamped on the goods. You are thus insured that you receive strictly high grade goods.

"Consol-ex" Bonded Spectacleware is the highest quality gold filled spectacleware on the market. The manufacturers positively replace it if it is found defective in wear or workmanship. If you contemplate buying a present for the old folks we urge you to give spectacleware your serious consideration. Come in and talk it over.

“CONSOL-EX” BONDED SPECTACLEWARE

“CONSOL-EX” is the highest grade of Gold Filled Spectacleware in the world. Its wearing qualities are such that the makers issue a bond with each article. This bond is an undertaking to replace *free at any time* any “Consol-ex” article that proves unsatisfactory in actual wear.



FACSIMILE OF CONSOL BOND ISSUED WITH EACH “CONSOL-EX” ARTICLE

Each article bears the trade mark “Consol-ex” stamped on the metal and printed on the tag.

We are direct agents for “Consol-ex” Spectacleware and make a specialty of correctly fitting them. We issue one of the manufacturers Bonds with each article of “Consol-ex” Spectacleware sold, and promptly replace the goods *free at any time* if found defective in any way, knowing that the manufacturers will make good to us.

