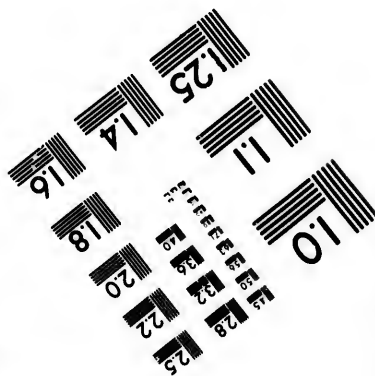
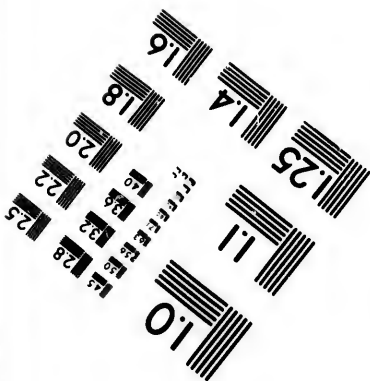
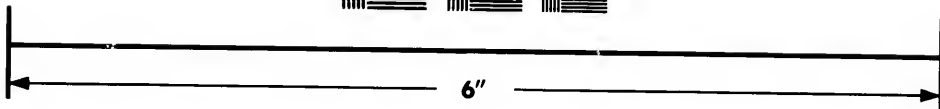
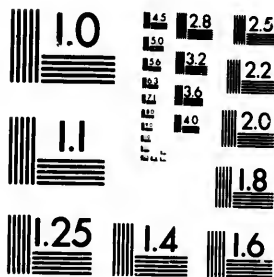


**IMAGE EVALUATION
TEST TARGET (MT-3)**



**Photographic
Sciences
Corporation**

23 WEST MAIN STREET
WEBSTER, N.Y. 14580
(716) 872-4503



**CIHM/ICMH
Microfiche
Series.**

**CIHM/ICMH
Collection de
microfiches.**



Canadian Institute for Historical Microreproductions / Institut canadien de microreproductions historiques



© 1983

Technical and Bibliographic Notes/Notes techniques et bibliographiques

The Institute has attempted to obtain the best original copy available for filming. Features of this copy which may be bibliographically unique, which may alter any of the images in the reproduction, or which may significantly change the usual method of filming, are checked below.

L'Institut a microfilmé le meilleur exemplaire qu'il lui a été possible de se procurer. Les détails de cet exemplaire qui sont peut-être uniques du point de vue bibliographique, qui peuvent modifier une image reproduite, ou qui peuvent exiger une modification dans la méthode normale de filmage sont indiqués ci-dessous.

- Coloured covers/
Couverture de couleur
- Covers damaged/
Couverture endommagée
- Covers restored and/or laminated/
Couverture restaurée et/ou pelliculée
- Cover title missing/
Le titre de couverture manque
- Coloured maps/
Cartes géographiques en couleur
- Coloured ink (i.e. other than blue or black)/
Encre de couleur (i.e. autre que bleue ou noire)
- Coloured plates and/or illustrations/
Planches et/ou illustrations en couleur
- Bound with other material/
Relié avec d'autres documents
- Tight binding may cause shadows or distortion along interior margin/
La reliure serrée peut causer de l'ombre ou de la distorsion le long de la marge intérieure
- Blank leaves added during restoration may appear within the text. Whenever possible, these have been omitted from filming/
Il se peut que certaines pages blanches ajoutées lors d'une restauration apparaissent dans le texte, mais, lorsque cela était possible, ces pages n'ont pas été filmées.
- Additional comments:/
Commentaires supplémentaires:

- Coloured pages/
Pages de couleur
- Pages damaged/
Pages endommagées
- Pages restored and/or laminated/
Pages restaurées et/ou pelliculées
- Pages discoloured, stained or foxed/
Pages décolorées, tachetées ou piquées
- Pages detached/
Pages détachées
- Showthrough/
Transparence
- Quality of print varies/
Qualité inégale de l'impression
- Includes supplementary material/
Comprend du matériel supplémentaire
- Only edition available/
Seule édition disponible
- Pages wholly or partially obscured by errata slips, tissues, etc., have been refilmed to ensure the best possible image/
Les pages totalement ou partiellement obscurcies par un feuillet d'errata, une pelure, etc., ont été filmées à nouveau de façon à obtenir la meilleure image possible.

This item is filmed at the reduction ratio checked below/
Ce document est filmé au taux de réduction indiqué ci-dessous.

10X	14X	18X	22X	26X	30X
<input type="checkbox"/>	<input type="checkbox"/>	<input type="checkbox"/>	<input checked="" type="checkbox"/>	<input type="checkbox"/>	<input type="checkbox"/>
12X	16X	20X	24X	28X	32X

The copy filmed here has been reproduced thanks to the generosity of:

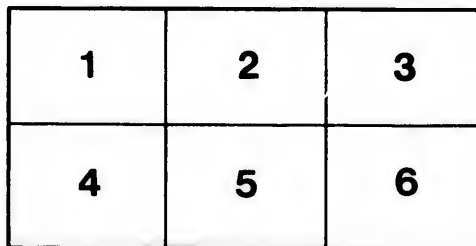
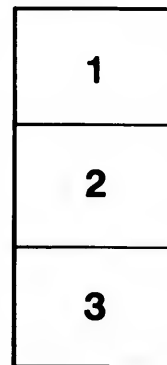
Library of the Public
Archives of Canada

The images appearing here are the best quality possible considering the condition and legibility of the original copy and in keeping with the filming contract specifications.

Original copies in printed paper covers are filmed beginning with the front cover and ending on the last page with a printed or illustrated impression, or the back cover when appropriate. All other original copies are filmed beginning on the first page with a printed or illustrated impression, and ending on the last page with a printed or illustrated impression.

The last recorded frame on each microfiche shall contain the symbol \rightarrow (meaning "CONTINUED"), or the symbol ∇ (meaning "END"), whichever applies.

Maps, plates, charts, etc., may be filmed at different reduction ratios. Those too large to be entirely included in one exposure are filmed beginning in the upper left hand corner, left to right and top to bottom, as many frames as required. The following diagrams illustrate the method:



L'exemplaire filmé fut reproduit grâce à la générosité de:

La bibliothèque des Archives
publiques du Canada

Les images suivantes ont été reproduites avec le plus grand soin, compte tenu de la condition et de la netteté de l'exemplaire filmé, et en conformité avec les conditions du contrat de filmage.

Les exemplaires originaux dont la couverture en papier est imprimée sont filmés en commençant par le premier plat et en terminant soit par la dernière page qui comporte une empreinte d'impression ou d'illustration, soit par le second plat, selon le cas. Tous les autres exemplaires originaux sont filmés en commençant par la première page qui comporte une empreinte d'impression ou d'illustration et en terminant par la dernière page qui comporte une telle empreinte.

Un des symboles suivants apparaîtra sur la dernière image de chaque microfiche, selon le cas: le symbole \rightarrow signifie "A SUIVRE", le symbole ∇ signifie "FIN".

Les cartes, planches, tableaux, etc., peuvent être filmés à des taux de réduction différents. Lorsque le document est trop grand pour être reproduit en un seul cliché, il est filmé à partir de l'angle supérieur gauche, de gauche à droite, et de haut en bas, en prenant le nombre d'images nécessaire. Les diagrammes suivants illustrent la méthode.

aire
détails
ues du
modifier
ger une
filmage

ées

re

y errata
ed to

nt
ne pelure,
çon à



AN
i

wo

ere

con
ing
me
for
the

bec
has
an
of
ling
the
of

rea

dua

As
dep
fide
the
exp

exp
of

ANNUAL REPORT of the Deacon's Court of Knox's Church, presented at the Annual Meeting on the 27th January, 1851.

The DEACONS in presenting the Accounts to the Annual Meeting now assembled, would beg permission to accompany them with a few remarks.

The *Resolution* of the last Annual Meeting, directing early steps to be taken for the erection of Galleries in Knox's Church, comes first to be noticed.

The work then recommended was taken up with due expedition; the Galleries were completed, and the Church re-opened in June. The accompanying Account headed "Building Fund," will shew the transactions connected therewith; and it now only remains for this meeting, having fully approved of the erection, to make, at the proper time, suitable provision for the unpaid balance of £120 10 4, which will be due in July with one year's interest thereon.

The Stipend Fund shows a larger sum collected than in any previous year, which has been expended in paying the Stipend during that part of the year in which the Congregation has been permitted to enjoy the services of a stated Pastor; the payment of a half-year's annuity to the bereaved family of our late lamented Minister, as directed by a public meeting of this Congregation in the month of July last, and the sum of Forty-six pounds, sixteen shillings and three pence, due our late Minister on the years 1848 and 1849, there remains still the sum of Twenty-five Pounds to be paid to bring up the dividend from the Sustentation Fund of 1848, to the late Rev. R. Robb, to the full sum promised, (i. e.) £250.

Should the present happy circumstances of this Congregation continue, there can be no reasonable doubt but the Pew Rents will exceed the present demands upon that fund.

The Local Fund being the proceeds of the Sabbath day collections, has also been gradually improving from the increase of the Congregation.

In anticipation of the Installment of £75 maturing on the 10th April, proximo, the Ladies' Association has kindly placed at the disposal of the Deacon's Court the sum of £50, at present deposited in the Savings Bank, towards that liability; with this aid the Deacons have full confidence in being able, during the first six months of the ensuing year, to meet all liabilities on the fund, from which the Installment on Mortgage, Interest of debt, Salaries and Incidental expenses fall to be paid.

The Deacons recommend that the outlay for Communion purposes, and the Travelling expenses of all Pulpit supplies, be paid by the Treasurer of the Local Fund on the application of the Elder or Deacon in charge.

All which is respectfully submitted

1851

(16)

BUILDING FUND ACCOUNT.

Dr.		Cr.	
To Sundry Collections, and Subscriptions.	£170 14 5	By Balance unpaid as per Audited Account,	£ 5 5 0
To Donation from Ladies' Association,	40 0 0	By Amount paid James Merrilees,	20 17 11
To Balance due Treasurer,	28 5 0	By Amount paid on account of Contract, "Morrison,"	197 16 6
		By paid H. Hills, for Plans, &c,	5 0 0
		By paid Contract for Painting,	10 0 0
	£238 19 5		£238 19 5

ITEMS UNPAID.

Mr. James Osborne,	£ 7 12 2
Messrs Stewart & Co.	5 15 0
Balance due Mr. A. Morrison, on Contract and Extras,	78 18 8
Balance due Treasurer as above,	28 5 0
	£123 10 10

STIPEND FUND.

Dr.		Cr.	
To Amount of Subscriptions and Pew Rents collected during past year,	£279 0 10	By paid Arrears of 1849,	£ 17 0 3
		By paid do., on account of 1848,	29 6 4
		By paid Two and a-half Quarter's Stipend,	156 5 0
		By paid Supplies	41 0 0
		By paid half-year's Widows' Annuity,	25 0 0
		By Balance in Treasurer's hands,	7 9 3
	£279 0 10		£279 0 10

LOCAL FUND.

Dr.		Cr.	
To Collections during past year,	£199 10 1	By Balance due Treasurer,	1 17 7½
Amount received from Ladies' Association towards Church debt,	50 0 0	By Synod's Home Mission,	8 0 0
Balance due Treasurer,	3 19 0½	By Insurance on Church, £1500,	8 8 10
		By Instalment on Mortgage,	75 0 0
		By Interest on Debt,	41 12 6
		By Foreign Missions,	8 9 1
		By Common Expenses,	5 0 0
		By Salaries to Door Keeper,	27 10 0
		By " Precentor,	25 0 0
		By French Mission Fund,	6 0 0
		By Treasurer Sabbath School Fund,	10 0 0
		By Home Mission Fund,	8 0 0
		By General Disbursements including Repairs, Cleaning, Printing, &c.,	25 11 1
	£253 9 1½		£253 9 1½

Audited, } Wm. H. PARK,
JOHN B. ELLISON:
7th February, 1851.

AMOUNTS DUE.

To Building Fund,	£123 10 10
To Treasurer's Local Fund,	3 19 0½
To Mr. Osborne,	28 12 4

SUMMARY OF DISBURSEMENTS.

1850.	
Remitted to India from Sabbath School Missionary Box,	£ 18 15 0
Monthly Collections for Foreign Missions,	7 8 9
Subscriptions to Knox's College,	85 1 9
Ladies' Association reserved for Church debt,	5 0 0
Home Mission,	40 0 0
Bursary,	10 0 0
Stipend Fund,	271 11 7
Local Fund and Church Debt,	253 9 1½
Building Fund,	238 19 5
Sabbath School Fund,	10 0 0
	£935 5 7½

Cr.
5 5 0
0 17 11
7 16 6
5 0 0
0 0 0

3 19 5

Cr.
0 3
6 4
5 0
0 0
0 0
9 3

0 10

Cr
17 7½
0 0
8 8 10
0 0
12 6
8 9 1
5 0 0
7 10 0
5 0 0
3 0 0
0 0 0
3 0 0
5 11 1

3 9 1½

ARK,
LLISON:
ary, 1851.

8 15 0
7 8 9
35 1 9
~~35~~ 0 0
40 0 0
40 0 0
71 11 7
53 9 1½
38 19 5
10 0 0

35 5 7½

