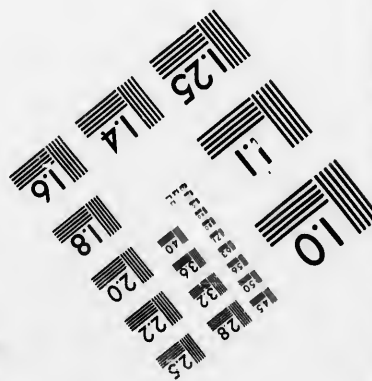
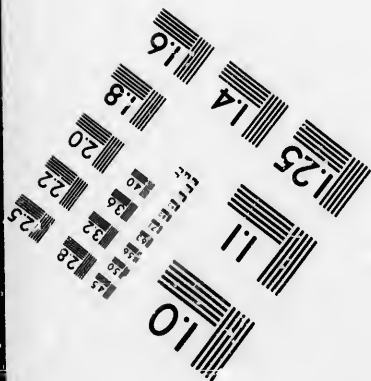
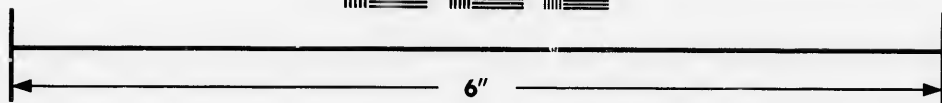
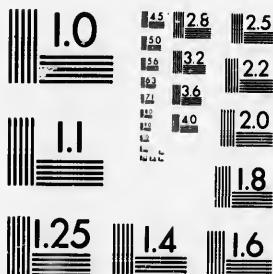


**IMAGE EVALUATION
TEST TARGET (MT-3)**



**Photographic
Sciences
Corporation**

23 WEST MAIN STREET
WEBSTER, N.Y. 14580
(716) 872-4503

15 28
18 32
22 25
20
1.8

**CIHM/ICMH
Microfiche
Series.**

**CIHM/ICMH
Collection de
microfiches.**



Canadian Institute for Historical Microreproductions / Institut canadien de microreproductions historiques

10
1.8

© 1986

Technical and Bibliographic Notes/Notes techniques et bibliographiques

The Institute has attempted to obtain the best original copy available for filming. Features of this copy which may be bibliographically unique, which may alter any of the images in the reproduction, or which may significantly change the usual method of filming, are checked below.

L'Institut a microfilmé le meilleur exemplaire qu'il lui a été possible de se procurer. Les détails de cet exemplaire qui sont peut-être uniques du point de vue bibliographique, qui peuvent modifier une image reproduite, ou qui peuvent exiger une modification dans la méthode normale de filmage sont indiqués ci-dessous.

- Coloured covers/
Couverture de couleur
- Covers damaged/
Couverture endommagée
- Covers restored and/or laminated/
Couverture restaurée et/ou pelliculée
- Cover title missing/
Le titre de couverture manque
- Coloured maps/
Cartes géographiques en couleur
- Coloured ink (i.e. other than blue or black)/
Encre de couleur (i.e. autre que bleue ou noire)
- Coloured plates and/or illustrations/
Planches et/ou illustrations en couleur
- Bound with other material/
Relié avec d'autres documents
- Tight binding may cause shadows or distortion
along interior margin/
La reliure serrée peut causer de l'ombre ou de la
distortion le long de la marge intérieure
- Blank leaves added during restoration may
appear within the text. Whenever possible, these
have been omitted from filming/
Il se peut que certaines pages blanches ajoutées
lors d'une restauration apparaissent dans le texte,
mais, lorsque cela était possible, ces pages n'ont
pas été filmées.
- Additional comments:/
Commentaires supplémentaires:

- Coloured pages/
Pages de couleur
- Pages damaged/
Pages endommagées
- Pages restored and/or laminated/
Pages restaurées et/ou pelliculées
- Pages discoloured, stained or foxed/
Pages décolorées, tachetées ou piquées
- Pages detached/
Pages détachées
- Showthrough/
Transparence
- Quality of print varies/
Qualité inégale de l'impression
- Includes supplementary material/
Comprend du matériel supplémentaire
- Only edition available/
Seule édition disponible
- Pages wholly or partially obscured by errata
slips, tissues, etc., have been refilmed to
ensure the best possible image/
Les pages totalement ou partiellement
obscurcies par un feuillet d'errata, une pelure,
etc., ont été filmées à nouveau de façon à
obtenir la meilleure image possible.

This item is filmed at the reduction ratio checked below/
Ce document est filmé au taux de réduction indiqué ci-dessous.

10X	14X	18X	22X	26X	30X
<input type="checkbox"/>	<input type="checkbox"/>	<input type="checkbox"/>	<input checked="" type="checkbox"/>	<input type="checkbox"/>	<input type="checkbox"/>
12X	16X	20X	24X	28X	32X

The copy filmed here has been reproduced thanks to the generosity of:

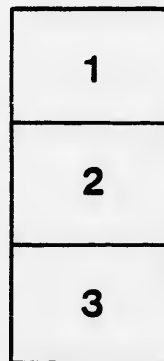
Archives of Ontario
Toronto

The images appearing here are the best quality possible considering the condition and legibility of the original copy and in keeping with the filming contract specifications.

Original copies in printed paper covers are filmed beginning with the front cover and ending on the last page with a printed or illustrated impression, or the back cover when appropriate. All other original copies are filmed beginning on the first page with a printed or illustrated impression, and ending on the last page with a printed or illustrated impression.

The last recorded frame on each microfiche shall contain the symbol \rightarrow (meaning "CONTINUED"), or the symbol ∇ (meaning "END"), whichever applies.

Maps, plates, charts, etc., may be filmed at different reduction ratios. Those too large to be entirely included in one exposure are filmed beginning in the upper left hand corner, left to right and top to bottom, as many frames as required. The following diagrams illustrate the method:



L'exemplaire filmé fut reproduit grâce à la générosité de:

Archives of Ontario
Toronto

Les images suivantes ont été reproduites avec le plus grand soin, compte tenu de la condition et de la netteté de l'exemplaire filmé, et en conformité avec les conditions du contrat de filmage.

Les exemplaires originaux dont la couverture en papier est imprimée sont filmés en commençant par le premier plat et en terminant soit par la dernière page qui comporte une empreinte d'impression ou d'illustration, soit par le second plat, selon le cas. Tous les autres exemplaires originaux sont filmés en commençant par la première page qui comporte une empreinte d'impression ou d'illustration et en terminant par la dernière page qui comporte une telle empreinte.

Un des symboles suivants apparaîtra sur la dernière image de chaque microfiche, selon le cas: le symbole \rightarrow signifie "A SUIVRE", le symbole ∇ signifie "FIN".

Les cartes, planches, tableaux, etc., peuvent être filmés à des taux de réduction différents. Lorsque le document est trop grand pour être reproduit en un seul cliché, il est filmé à partir de l'angle supérieur gauche, de gauche à droite, et de haut en bas, en prenant le nombre d'images nécessaire. Les diagrammes suivants illustrent la méthode.

rrata
to

pelure,
n à



32X

is
PART

Number of ROLLS	JUNK.
3	
4	J
5	
80	
2	
8	
14	
15	J
16	
20	
30	
32	
33	
36	
37	
48	
49	
54	
58	
61	
63	
65	
71	
8	
8	
9	
9	
9	
10	
2	
1	
1	
1	
1	
1	

ELECTORS' LIST, 1898,

Municipality of Merrickville.

RECEIVED AND FILED
MERRICKVILLE

POLLING SUB-DIVISION NO. 1, Dec 24/98

comprising that portion of the Village of Merrickville, which lies to the West of the centre line of St. Lawrence Street, the Government Bridges, the Mill-Dam, and Montague Street.

PART I.—Persons entitled to vote at BOTH Municipal Elections and Elections to the Legislature.

Number on Roll.	JUROR.	NAME.	LOT.	CON. OR STREET.	Qualification.	Occupation.	Post Office Address.
3		Aston, Edward...	162,	St. Lawrence,	O. M. F.	Clergyman	Merrickville
4	J	Atchie, Alexander...	40,	Drummond,	O. M. F.	Agent	do
5		Aitcheson, Alexander	36,	Drummond,	T. M. F.	Labourer	do
80		Angus, James E.	C. P. R.—not	Roadway,	O. M. F.	Station Ag	do
2		Baker, Albert E.	142,	St. Lawrence,	T. M. F.	Lawyer	do
8		Boyle, William.....	Part of 6,	First Range,	T. M. F.	Finisher	do
14		Buttimore, Jr. Thos.	118 and 119,	St. John,	O. M. F.	Moulder	do
15	J	Buttimore, Thomas...	109 and 121,	Lewis and St. John,	O. M. F.	Dyer	do
16		Bedell, Thomas C....	Part of 84.	St. Lawrence,	T. M. F.	Physician	do
20		Brislan, John.....	11,	Third Range,	O. M. F.	Carpenter	do
30	J	Brennan, James A. ...	Part of 6,	Third Range,	T. M. F.	Grocer	do
32		Barton, Joseph.....	Part of 66 & 85,	St. Lawrence,	O. M. F.	Harness'cr	do
33	J	Buttimore, John....	Part of 85,	St. Lawrence,	O. M. F.	Moulder	do
36		Bates, Samuel T....	Part of 26,	St. Lawrence,	T. M. F.	Tailor	do
37		Bates, Edwin.....	"	St. Lawrence,	O. M. F.	Miller	do
48		Beamish, Samuel ...	8 and 9,	Block 36,	T. M. F.	Labourer	do
49		Bigham, James	26,	West Broadway,	O. M. F.	Bl'k Smith	do
54		Brennan, James.....	Part of 7,	Third Range,			
58		Cusick, Patrick.....	Part of 14,	First Range,	O. M. F.	L'kTender	do
61	J	Crate, Frederick ...	102,	Elgin,	T. M. F.	Moulder	do
63	J	Calbert, Thomas ...	Part of 6,	Third Range,	O. M. F.	Merchant	do
65		Church, Mills K. ...	Part of 26,	St. Lawrence,	O. M. F.	Physician	do
71		Crozier, Demetrius.	80,	St. John,	O. M. F.	Agent	do
87	J	Dillabough, Basil...	77,	Lewis,	O. M. F.	Harness'kr	do
82		Driscoll, John	Part of 14,	First Range,	T. M. F.	Labourer	do
91	J	Edwards, James H. ...	Part of 8,	Fourth Range,	O. M. F.	Bl'k Smith	do
94		Edwards, Charles...	42,	Drummond,	O. M. F.	Bl'k Smith	do
95		Edwards, Thomas...	67,	Drummond,	O. M. F.	Bl'k Smith	do
100		Easton, Hiram.....	12, 13 and 14,	Montague,	O. M. F.	Gentleman	do
296		Ferguson, Francis...	Part of 66,	Drummond,	T. M. F.	M'rble-de'r	do
114	J	Guest, Stephen.....	Part of 110,	Lewis,	T. M. F.	Gentleman	do
117		Hicks, John F.	Part of 10,	Third Range,	O. M. F.	Bl'k Smith	do
118	J	Holden, Charles A. ...	7 and part of 6,	Second Range,	O. M. F.	Traveller	do
121		Hanlan, William J. ...	82,	Lewis,	O. M. F.	Labourer	do
123		Hall, David J.	9,	Second Range,	O. M. F.	Printer	do

301 J	Tallman, Esle H....	Part of 6, 7 & 8,	First Range,	O. M. F.	Merchant	do
302 J	Todd, J. Harry.....	Part of 32 & 33,	Brook,	O. M. F.	Barber	do
303 J	Teevans, John	44,	St. Lawrence,	O. M. F.	Hotelkeep'	do
304 J	Tero, Joseph.....	107 and 108,	Lewis,	O. M. F.	Moulder	do
307	Tallman, Ephriam...	34 and part 33,	William,	O. M. F.	Gentleman	do
192	Thompson, Robert.	Part of 8 and 9,	Concession A. & B.	Oe. M. F.	Farmer	do
309	Vanexan, John.....	5 and part of 4,	Block 36,	O. M. F.	Moulder	do
310 J	VanCamp, Sterling.	Part of 6 and 7,	Third Range,	O. M. F.	Painter	do
311 J	Vallier, Earnest.....	Part of 3 and 4,	Block 36,	T. M. F.	Flour deal'	do
319	Whitmarsh, Eliazer	Part of 10,	First Range,	O. M. F.	D. C. Clerk	do
323	Walker, Robert.....	Part of 9,	First Range,	T. M. F.	Painter	do
327	Wylie, Adam.....	2 and 3,	Block 27,	O. M. F.	Gentleman	do
331 J	Wilson, Samuel J....	163,	St. Lawrence,	O. M. F.	Builder	do
340	Whitmarsh, Geo. A.	Part of 9,	Concession A.	T. M. F.	c Traveller	do

PART II.—List of persons entitled to vote at MUNICIPAL Elections ONLY.

1	Abrey, James	143,	Colborne,	O.	Student	Kingston
7	Armstrong, Mary...	part of 6,	First Range,	T.	Widow	Merrickville
12	Burchill, Elizabeth.	123 and 124,	St. Lawrence,	Oe.	Spinster	do
13	Burchill, Jane Ann	123 and 124,	St. Lawrence,	Oe.	Widow	do
21	Brennick, Rose.....	16,	Main,	O.	Widow	do
31	Burchill, Elizabeth.	part of 11 & 12,	Fourth Range,	O.	Spinster	do
52	Bissell, Orsamus ...	part of 10,	Concession B.	O.	Farmer	do
321	Bradford, Mary.....	part of 10,	First Range,	T.	Widow	do
57	Cusick, Honora.....	56,	St. Patrick,	O.	Widow	do
59	Cusick, William.....	11, & part 23,	Montague,	O.	Finisher	Gananoque
102	Easton, Susan	Dwelling	Mill-Dam,	T.	Widow	Merrickville
104	Eagley, Robert.....	part of 33,	William,	O.	Moulder	Geneva, N Y
107	Everetts, Milton....	part of 10,	Broken Front,	T.	Manufac'r	Smith' Falls
115	Gleason, Anna	3,	Block 36,	Oe.	Spinster	Merrickville
120	Haight, Mary J.....	83,	Lewis,	O.	Widow	Smith' Falls
135	Johnston, Mary.....	part of 6,	Third Range,	T.	Spinster	Merrickville
141	Johnston, Caroline A	106,	St. Lawrence,	O.	Spinster	do
162	Kelly, Ann	12,	Third Range,	Oe.	Widow	do
163	Kervin, Mary.....	12,	Third Range,	O.	Widow	Cornwall
239	Knapp, Ceno.....	13,	Fourth Range,	O.	Widow	Merrickville
322	Leonard, Charlotte.	part of 8,	First Range,	T.	Widow	do
171	Lake, Rebecca	part of 39,	St. John,	O.	Spinster	do
273	Merrick, William ...	part of 23,	West Broadway,	O.	Miller	Athens
190	Magee, James.....	9,	Fourth Range,	O.	Tauner	Unknown
199	Merrick, Caroline...	part of 15 & 16,	William,	O.	Widow	Merrickville
201	Minnions, Sarah ...	part of 10 & 27,	Block 45,	O.	Widow	do
203	Merrick, Mary P....	16 & 17,	1st and 2nd Range,	O.	Widow	Kingston
108	Morrison, William...	part of 10,	Broken Front,	Oe.	Cheese'ker	Merrickville
166	Magee, Mary.....	part of 8 & 9,	Block 36,	O.	Widow	do
209	McCarney, Rebecca	13,	Second Range,	O.	Widow	do
218	McDonald, Anna ...	part of 84,	St. Lawrence,	O.	Widow	do
228	McGill, Eva	20,	William,	O.	Spinster	do
229	McGill, Margaret...	20,	William,	O.	Spinster	do

32	232	McIntyre, Henry... 27,	Brock,	O.	Farmer	merrickville.
	234	McCaul'y, Matilda. 14 and 15,	Second Range,	O.	Spinster	Kingston
13	242	O'Donnell, Hugh ... 76, 72 & others,	Drummond,	O.	Farmer	Merrickville
14	247	Postlethwaite, Wm. 104,	Lewis,	O.	Farmer	do
15	253	Pelton, D. Edson... part of 26,	St. Lawrence,	T.	Potog'pler	Kemptville
15	261.	Payea, Margaret ... part of 13,	Third Range,	O.	Spinster	Merrickville
15	266	Putnam, Letitia..... 14,	Fourth Range,	O.	Widow	do
16	153	Peoples, Robert.....	Block 10.	O.	Labourer	Kemptville
16	312	Quinn, Julia A..... part of 3 and 4,	Block 36,	O.	Widow	Merrickville
16	281	Read, Catherine.... part of 81,	St. John,	T.	Widow	do
17	293	Stewart, Elizabeth... 8,	Third Range,	T.	Widow	do
17	294	Smith, Catharine ... 33, 34 and 35,	Brock,	O.	Widow	do
18	83	Vanexan, Mary..... part of 14,	First Range,	O.	Widow	do
18	328	Wickwire, Jane..... part of 81,	St. John,	O.	Widow	do
18	339	Watchorn, Matilda. pt. 29, & others,	Brock,	O.	Widow	do

PART III.—Persons entitled to Vote at Elections to the Legislative Assembly, ONLY.

208				M. F.	Labourer,	do
211	22	Brislan, Everistas.....		M. F.	Labourer,	do
216	23	Brislan, Fidelas.....		M. F.	Labourer,	do
219	51	Bigham, William.....		M. F.	Labourer,	do
226	60	Cusick, Francis J.....		M. F.	Clerk,	do
227	77	Crozier, J. Stanley.....		M. F.	Teacher,	do
231	124	Holliston, William.....		M. F.	Lockm'str	do
235	142	Johnston, Matthew.....		M. F.	Carder,	do
342	177	Lisson, John.....		M. F.	Clerk,	do
159	210	McCarney, Edward.....		M. F.	Carder,	do
134	230	McGill, James.....		M. F.	Labourer,	do
236	244	Payea, Edward.....		M. F.	Miller,	do
343	245	Payea, Francis.....		M. F.	Tel. Op'r,	do
234	265	Putnam, Harry.....		M. F.	Labourer,	do
238	282	Read, James.....		M. F.	Moulder,	do
243	305	Tero, Daniel.....		M. F.	Carpenter,	do
246	308	Vallier, Joseph.....		M. F.		

I, JOHN JOHNSTON, Clerk of the Municipality of the village of Merrickville, in the County of Grenville, do hereby certify that parts one and three of the within List constitute a correct List for the year 1898, of all persons appearing by the last Revised Assessment Roll of the said Municipality, to be entitled to vote at Elections for Members of the Legislative Assembly; and that parts one and two constitute a correct List for said year, of all persons appearing, by the said Roll, to be entitled to vote at Municipal Elections in said Municipality; and I hereby call upon all Electors to examine the said List, and if any omissions or other errors are perceived therein, to take immediate proceedings to have the said errors corrected according to law.

JOHN JOHNSTON, Clerk of said Municipality

Dated this First day of September, 1898.

D. J. HALL, PRINTER, MERRICKVILLE.

Number	JUROR.
9	J
10	J
19	J
24	J
25	J
28	J
34	J
35	J
40	J
42	J
44	J
47	J
55	J
130	J
197	J
204	J
68	J
69	J
70	J
72	J
74	J
78	J
79	J
75	J
81	J
84	J
86	J
89	J
90	J
93	J
96	J
98	J
99	J
101	J
103	J
106	J
110	J
111	J
119	J

127	Jaques, Henry W....	Part of 2,	First Range,	O M F	Druggist,	Merrickville.	
129	Jakes, Samuel.....	4 and part of 3,	First Range,	O M F	Merchant,	do	
132	J Jenkinson, George W.	15, and 16,	Block 58,	T M F	Blacksmith,	do	
136	J James, John.....	Part of 30 and 30	Brock.	O M F	Harness'kr,	do	
137	Johnston, William J..	Part of 127,	St. Lawrence,	F M F	Physician,	do	
139	J Jakes, George L.....	1 & 1.	3rd and 4th Range;	O M F	Coal-dealer	do	
143	J Kelly, John C.....	45,	Rideau,	O M F	Laborer,	do	
144	J Kelly, Michael.....	43,	Rideau,	O M F	Laborer,	do	
145	J Kelly, Edward.....	46,	Rideau,	O M F	Laborer,	do	
147	J Kirk, William.....	100,	Lewis,	T M F	Shoemaker,	do	
150	Kempfer, Alexander..	Block 1 & 2,....		O M F	Carter,	do	
154	J Keir, George.....	53,	Elgin,	T M F	Carder,	do	
148	J Keir, John.....	53,	Elgin,	O M F	Clerk,	do	
160	Kyle, Patrick.....	46,	St. Lawrence,	O M F	Manufacturer	do	
161	J Kyle, Edward.....	Part of New-Mill,		T M F	Electrician	do	
165	J Knapp, Barnabus.....	101,	Lewis,	O M F	Carpenter,	do	
169	Lockhart, Samuel....	98,	Church,	O M F	Stonecutter	do	
172	Lang, Morton K.....	Part of 7,	Concession A.	O M F	Farmer,	do	
173	Lang, John W.....	Part of 7,	Concession A.	O M F	Pump'aker	do	
174	J Lang, William.....	Part of 10.	Block 58,	T M F	Laborer,	do	
178	Muir, John.....	Part of 7,	Concession A.	O M F	Gentleman	do	
179	Miller, Peter.....	6 and 7,	Block 68,	O M F	Gentleman,	do	
181	J Moxley, George.....	11, 12 & 13,	Brock,	O M F	Butcher,	do	
182	Monty, Dominick....	19 & 55,	Brock & Drummond,	O M F	Gentleman	do	
183	J Maxwell, John.....	B.	Fourth Range,	O M F	Laborer,	do	
184	Mosher, David.....	22,	Brock,	O M F	Laborer,	do	
185	J Miskelly, William...	18,	Brock,	O M F	Tinsmith	do	
193	J Mills, Alexander....	92 & 93,	Elgin,	O M F	Manufacturer	do	
196	J Magee, George B....	1, 2 and 3,	Mill,	O M F	Gentleman	do	
206	Maxwell, William G..	Part of 22,	Brock,	T M F	Laborer,	do	
212	McIntyre, John.....	3, 4 & 5,	Block 60;	O M F	Moulder,	do	
213	McEwan, James.....	20,	Brock,	T M F	Laborer,	do	
217	J McCabe, John.....	47, part 48 & 49,	St. Lawrence,	O M F	Hotelkeeper	do	
222	J McCren, Frederick S.	47,	Rideau,	O M F	Carpenter	do	
223	McClarence Henry..	48 and 49,	Rideau,	T M F	Laborer,	do	
225	McKibbon, Robert....	45 & 45	Rideau,	O M F	Shoemaker,	do	
240	Oliver, Robert J.....	133,	Elgin,	T M F	S. Teacher,	do	
236	Nicholson, William..	Part of 8,	Concession. A. & B.	O M F	Farmer,	do	
251	Pearson, William....	Part of 8,	Concession B.	O M F	Gentleman,	do	
255	Phillips, Richard....	12, and others,	Main,	O M F	Locklabor,	do	
256	Percival, Roger C....	1 and 1,	1st and 2nd Range,	O M F	Gentleman	do	
257	Pearson, Simon.....	8,	Main,	O M F	Gentleman	do	
263	J Prosser, James H....	Part of 5,	Second Range,	T M F	Carpenter,	do	
269	Phillips, Wellington.	59,	East Broadway,	T M F	Laborer,	do	
271	J Percival, Thomas H.	A.	First Range,	O M F	Manufacturer	do	
274	Quackinbush, John..	Part of 58,	East Broadway,	O M F	Laborer,	do	
275	Roberts, William....	15,	Block 56,	O M F	Clergyman,	do	
276	J Real, Daniel.....	Part of 5,	Second Range,	O M F	Mch. Tailor,	do	
280	Rose, Charles.....	99,	Lewis,	O M F	Laborer,	do	
283	Rose, Ashmand.....	Part of 54,	Bye,	T M F	Laborer,	do	
285	J Read, Edward A.....	E,	Broken Front,	T M F	Gentleman	do	
28	Rose, Henry.....	2,	Third Range,	T M F	Painter.	do	
292	J Silver, Nahim.....	Part of 24 & 48,	Brock,	T M F	Merchant	do	
299	Tuck, William.....	52,	Rideau,	T M F	Laborer.	do	
306	J Thorp, William.....	161,	St. Lawrence,	O M F	Carpenter.	do	
198	Thompson, Russell...	Part of 15 & 16,	Block 41,	T M F	Laborer.	do	

313 J
315
316
317 J
325
326
333 J
334
336 J
337 J
338 J
131 J
341
6 A
27 B
29 B
38 B
46 B
140 B
73 C
97 C
314 D
92 E
105 E
125 H
126 H
138 H
128 J
62 K
146 K
41 L
180 M
188 M
194 M
195 M
214 M
711 M
56 N
207 O
254 P
258 P
262 P
11 P
233 R
286 R
284 R
297 S
300 T
112 U

313	J White, John	A.	Fourth Range,	T M F	Laborer.	Merrickville.
315	Williams, Edward	8,	East Broadway,	O M F	Shoemaker.	do
316	Whiting, Harvey D.	B.	Third Range,	O M F	Cheesemk'r	do
317	J Wilson, John	132,	Elgin,	O M F	Builder,	do
325	White, James	11,	Block 59,	O M F	Laborer.	do
326	White, William	12 and 13,	Block 59,	O M F	Teamster,	do
333	J Wilson, David A.	138,	Colborne,	O M F	Agent,	do
334	Wilson, William	138,	Colborne,	Oc. M F	Gentleman,	do
336	J Watchorn, Robert W.	Part of Mill Plot.	Woolen Mill.	O M F	Manufacturer	do
337	J Watchorn, George E.	Part of Mill Plot.	Woolen Mill.	O M F	do	do
338	J Watchorn, Thomas H.	Part of 42,	Park,	O M F	C. Traveler	do
131	J Waddell, John B.	Part of 5,	First Range,	Oc. M F	Bank Clerk	do
341	Young, Alexander	Part of 25,	St. Lawrence,	T M F	Vet. Sur'gn	do

PART II.—List of persons entitled to vote at MUNICIPAL Elections ONLY.

6	Aitcheson, Catherine	part 23, 24 & 48,	Brock,	Owner	Widow,	Merrickville.
27	Boyle, Abigail	17,	Block 58,	Owner	Widow,	do
29	Barry, Henry	2,	Fourth Range,	Owner	Clerk,	New York.
38	Barton, Martha E.	50,	Elgin & Drummond,	Owner	Widow,	Merrickville.
46	Burchill, Ellen	part of 16 & 17,	Block 41,	Owner	Widow,	do
140	Bigford, Henry	153,	St. Lawrence,	Owner	Farmer.	Bishops Mills
73	Clarkin, Anna	Part of 41,	St. Lawrence,	Tenant	Spinster,	Merrickville.
97	Church, Clarence R.	131,	Elgin,	Owner,	Physician,	Ottawa.
314	Driscoll, Richard	Part of A.	Third Range,	Owner	Farmer,	Drayton, N.D
92	Eagley, Eliza	6,	Fourth Range,	Owner	Widow,	Merrickville.
105	Erratt, Edwin	50,	Rideau,	Owner	Sawyer,	Lombardy.
125	Hamilton, Rosana	4,	Fourth Range,	Owner,	Spinster,	Merrickville.
126	Hamilton, Ruth	4,	Fourth Range,	Owner,	Spinster,	do
138	Holdercroft, Joseph	Part of 127,	St. Lawrence,	Owner,	Physician,	do
128	Jaques, Fanny	9,	Main,	Owner,	Spinster,	do
62	Kyle, John	102,	Elgin,	Owner,	Farmer,	Unknown.
146	Kelly, Mary	46,	Rideau,	Owner,	Spinster,	Merrickville.
41	Langford, Mary	57,	Elgin,	Owner,	Widow,	Ottawa.
180	Moshier, Benjamin	Part of 10	Block 58,	Owner,	Farmer,	Merrickville.
188	Muddle, Effie	Part of 25,	St. Lawrence,	Tenant,	Spinster,	do
194	Magee, Ida	Foundry,	Part of Mill-Plot,	Income,	Spinster,	Montreal.
195	Miller, William	20,	Block,	Owner,	Farmer,	Spencerville.
214	Mosher, David Colin	6, 7 & 8,	Block 60,	Owner,	Farmer,	Merrickville.
211	McIntyre, Susau	1 and 2,	Montague,	Owner,	Widow,	do
56	Newman, William	Part of 22,	Brock,	Owner,	Lockmaster	Andrewsville
207	O'Brien, Johanna	1, 2 & 3,	Block 3,	Owner,	Widow,	Syracuse, NY
254	Palmer, Ruth	6 & 7,	Main,	Occupant	Spinster,	Merrickville.
258	Pearson, Olive	56 & 57,	East Broadway,	Owner,	Spinster,	do
262	Phillips, Margaret	152,	St. Lawrence,	Owner,	Carpenter,	Unknown.
11	Phillips, Charles W.	3 & 4,	Block 56,	Tenant,	Spinster,	Merrickville.
233	Real, Mary Ann	E.	Broken Front,	Owner,	Widow,	do
286	Read, Margaret	Part of 3 & 4.	Block 5,	Owner,	Widow,	do
284	Roe, Jane	5 & 6,	Rideau,	Owner,	Spinster,	do
297	Stone, Maggie	53,	Rideau,	Owner,	Widow,	do
300	Tackaberry, Maria	4,	Brock,	Owner,	Gentleman,	Ottawa.
112	Urquhart, James					

318	Ward, Mary	Block 4,	Owner,	Spinster	Brockville.
332	Wood, Maria	173,	St. Lawrence,	Widow,	Merrickville.
39	Wood, Sarah	50,	Eliza'th & Drummond, Owner,	Widow,	do
330	Weir, Martha	86,	St. Lawrence,	Widow,	Unknown.
76	Willmer, John	133 and 134,	Colborne and Elgin, ..	Owner, Farmer,	Merrickville.

PART III.—Persons entitled to Vote at Elections to the Legislative Assembly only.

17	Bell, William	M. F...	Moulder,	Merrickville.
18	Byce, Ferguson	M. F...	Clerk,	do
43	Burchill, Ernest	M. F...	Laborer.	do
45	Burgess, Jehiel	M. F...	Laborer.	do
53	Brennan, Thomas	M. F...	Laborer.	do
66	Church, Sanford	M. F...	Clerk.	do
67	Church, Ruggles	M. F...	Student,	do
85	Dunlop, John	M. F...	Weaver,	do
88	Driscoll, William	M. F...	Bar-Tender	do
109	Forbes, Thomas	M. F...	Laborer.	do
113	Gomez, Mariana	M. F...	Moulder,	do
116	Hill, William	M. F...	Gentleman.	do
122	Harder, Richard	M. F...	Clerk.	do
156	Kyle, William	M. F...	Electrician.	do
220	McIntyre, Henry	M. F...	Annealer.	do
224	McEwin, David	M. F...	Baker,	do
241	O'Dell, Harry	M. F...	Bagagem'n	do
259	Pettipiece, Edward	M. F...	Asist' P.M.	do
270	Phillips, William	M. F...	Laborer,	do

RECEIVED AND FILED
BROCKVILLE

Dec 24/98

M. M. BROWN

F. M. S.

I, JOHN JOHNSTON, Clerk of the Municipality of the village of Merrickville, in the County of Grenville, do hereby certify that parts one and three of the within list constitute a correct List for the year 1898, of all persons appearing by the last Revised Assessment Roll of the said Municipality, to be entitled to vote at Elections for Members of the Legislative Assembly; and that parts one and two constitute a correct List for said year, of all persons appearing, by the said Roll, to be entitled to vote at Municipal Elections in said Municipality; and I hereby call upon all Electors to examine the said List, and if any omissions or other errors are perceived therein, to take immediate proceedings to have the said errors corrected according to law.

Dated this First day of September, 1898.

JOHN JOHNSTON, Clerk of said Municipality.

D. J. HALL, PRINTER, MERRICKVILLE.

