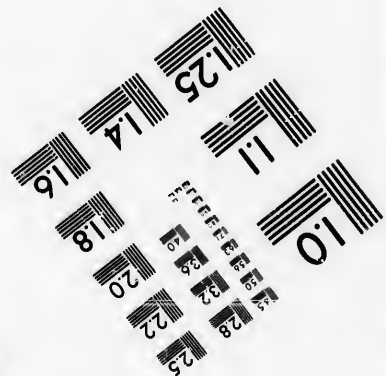
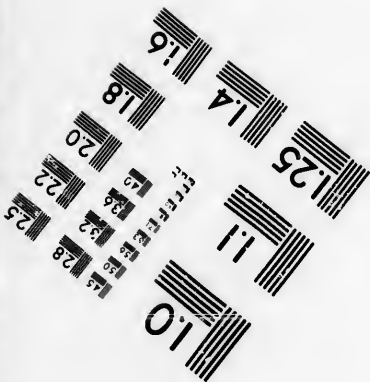
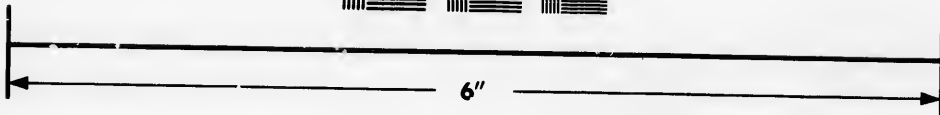
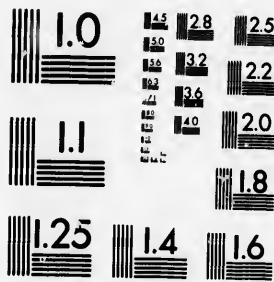


**IMAGE EVALUATION
TEST TARGET (MT-3)**



**Photographic
Sciences
Corporation**

23 WEST MAIN STREET
WEBSTER, N.Y. 14580
(716) 372-4503



**CIHM/ICMH
Microfiche
Series.**

**CIHM/ICMH
Collection de
microfiches.**



Canadian Institute for Historical Microreproductions / Institut canadien de microreproductions historiques



© 1986

Technical and Bibliographic Notes/Notes techniques et bibliographiques

The Institute has attempted to obtain the best original copy available for filming. Features of this copy which may be bibliographically unique, which may alter any of the images in the reproduction, or which may significantly change the usual method of filming, are checked below.

L'Institut a microfilmé le meilleur exemplaire qu'il lui a été possible de se procurer. Les détails de cet exemplaire qui sont peut-être uniques du point de vue bibliographique, qui peuvent modifier une image reproduite, ou qui peuvent exiger une modification dans la méthode normale de filmage sont indiqués ci-dessous.

- | | |
|--|--|
| <input checked="" type="checkbox"/> Coloured covers/
Couverture de couleur | <input type="checkbox"/> Coloured pages/
Pages de couleur |
| <input type="checkbox"/> Covers damaged/
Couverture endommagée | <input type="checkbox"/> Pages damaged/
Pages endommagées |
| <input type="checkbox"/> Covers restored and/or laminated/
Couverture restaurée et/ou pelliculée | <input type="checkbox"/> Pages restored and/or laminated/
Pages restaurées et/ou pelliculées |
| <input type="checkbox"/> Cover title missing/
Le titre de couverture manque | <input checked="" type="checkbox"/> Pages discoloured, stained or foxed/
Pages décolorées, tachetées ou piquées |
| <input type="checkbox"/> Coloured maps/
Cartes géographiques en couleur | <input type="checkbox"/> Pages detached/
Pages détachées |
| <input type="checkbox"/> Coloured ink (i.e. other than blue or black)/
Encre de couleur (i.e. autre que bleue ou noire) | <input checked="" type="checkbox"/> Showthrough/
Transparence |
| <input type="checkbox"/> Coloured plates and/or illustrations/
Planches et/ou illustrations en couleur | <input type="checkbox"/> Quality of print varies/
Qualité inégale de l'impression |
| <input type="checkbox"/> Bound with other material/
Relié avec d'autres documents | <input type="checkbox"/> Includes supplementary material/
Comprend du matériel supplémentaire |
| <input type="checkbox"/> Tight binding may cause shadows or distortion
along interior margin/
L'oreille serrée peut causer de l'ombre ou de la
distorsion le long de la marge intérieure | <input type="checkbox"/> Only edition available/
Seule édition disponible |
| <input type="checkbox"/> Blank leaves added during restoration may
appear within the text. Whenever possible, these
have been omitted from filming/
Il se peut que certaines pages blanches ajoutées
lors d'une restauration apparaissent dans le texte,
mais, lorsque cela était possible, ces pages n'ont
pas été filmées. | <input type="checkbox"/> Pages wholly or partially obscured by errata
slips, tissues, etc., have been refilmed to
ensure the best possible image/
Les pages totalement ou partiellement
obscurcies par un feuillet d'errata, une pelure,
etc., ont été filmées à nouveau de façon à
obtenir la meilleure image possible. |
| <input type="checkbox"/> Additional comments:
Commentaires supplémentaires: | |

This item is filmed at the reduction ratio checked below/
Ce document est filmé au taux de réduction indiqué ci-dessous.

10X	12X	14X	16X	18X	20X	22X	24X	26X	28X	30X	32X
							/				

The copy filmed here has been reproduced thanks to the generosity of:

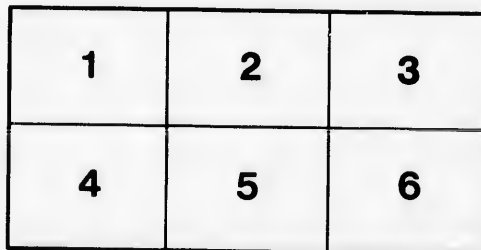
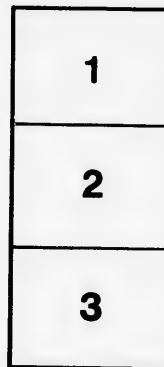
Library of the Public
Archives of Canada

The images appearing here are the best quality possible considering the condition and legibility of the original copy and in keeping with the filming contract specifications.

Original copies in printed paper covers are filmed beginning with the front cover and ending on the last page with a printed or illustrated impression, or the back cover when appropriate. All other original copies are filmed beginning on the first page with a printed or illustrated impression, and ending on the last page with a printed or illustrated impression.

The last recorded frame on each microfiche shell contains the symbol \rightarrow (meaning "CONTINUED"), or the symbol ∇ (meaning "END"), whichever applies.

Maps, plates, charts, etc., may be filmed at different reduction ratios. Those too large to be entirely included in one exposure are filmed beginning in the upper left hand corner, left to right and top to bottom, as many frames as required. The following diagrams illustrate the method:



L'exemplaire filmé fut reproduit grâce à la générosité de:

La bibliothèque des Archives
publiques du Canada

Les images suivantes ont été reproduites avec le plus grand soin, compte tenu de la condition et de la netteté de l'exemplaire filmé, et en conformité avec les conditions du contrat de filmage.

Les exemplaires originaux dont la couverture en papier est imprimée sont filmés en commençant par le premier plat et en terminant soit par la dernière page qui comporte une empreinte d'impression ou d'illustration, soit par le second plat, selon le cas. Tous les autres exemplaires originaux sont filmés en commençant par la première page qui comporte une empreinte d'impression ou d'illustration et en terminant par la dernière page qui comporte une telle empreinte.

Un des symboles suivants apparaît sur la dernière image de chaque microfiche, selon le cas: le symbole \rightarrow signifie "A SUIVRE", le symbole ∇ signifie "FIN".

Les cartes, planches, tableaux, etc., peuvent être filmés à des taux de réduction différents. Lorsque le document est trop grand pour être reproduit en un seul cliché, il est filmé à partir de l'angle supérieur gauche, de gauche à droite, et de haut en bas, en prenant le nombre d'images nécessaire. Les diagrammes suivants illustrent la méthode.

re
détails
es du
modifier
r une
image

s

rrata
o

pelure,
à

32X



OWL'S HEAD
MOUNTAIN HOUSE



LAKE MEMPHREMOG



BF

POST

MDCC

BROCHURE

OF

OWL'S HEAD MOUNTAIN HOUSE

POST OFFICE ADDRESS:

NEWPORT, VT.

LAKE MEMPHREMAGOG

CHARLES D. WATKINS, PROPRIETOR

MDCCLXXXIX

GEO. F. RICHARDS, MANAGER



COPYRIGHT, 1880,
BY
CHARLES D. WATKINS.



PRESS OF A. H. KELLOGG, 100 AND 102 READE STREET, NEW YORK.



OWL'S HEAD MOUNTAIN HOUSE, FROM BLUE POINT.

QUEBEC CENTRAL RY.

The Popular Pleasure Route from New England to Quebec and the St. Lawrence.

NEW STEEL RAILS. NEW PASSENGER CARS. "MONARCH" DAY & NIGHT COACHES.

Connecting at Sherbrooke with Boston & Maine and Grand Trunk Railway Trains.

Connecting at Harlaka and Levis with Intercolonial Railway Trains.

Connecting at Levis and Quebec with all St. Lawrence River Steamboats.

Connecting at Quebec with Quebec & Lake St. John Railway and the Hunting and Fishing of the Lake St. John Region.

Fast Trains ————— Buffet Service ————— Magnificent Scenery ————— Sure Connections.

BE SURE AND ASK FOR TICKETS VIA QUEBEC CENTRAL RAILWAY.

TICKET OFFICES:—BOSTON—W. RAYMOND, 296 Washington Street; BOSTON & MAINE RAILWAY OFFICE, 211 Washington Street. NEW YORK—WORLD TRAVEL CO., and THOS. COOK & SON, Agents. MONTREAL—UNION TICKET OFFICE, Windsor Hotel. NEWPORT, VT.—MEMPHREMAGOG HOUSE.

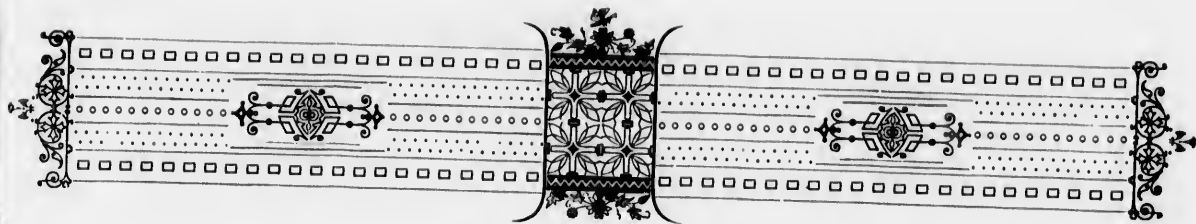
J. H. WALSH, General Passenger Agent, SHERBROOKE, P. Q.

rence.
ES.

g of the Lake

tions.

ILWAY
Agentis.



OWLS' HEAD MOUNTAIN HOUSE,



ON THE shore of Lake Memphremagog, the Geneva of Canada, and the gateway through which passed the fierce Abenakis, a powerful tribe of the roaming warrior Algonquins, who were the deadly foes of the more civilized Yrocois (Iroquois): savages who for a century carried periodical war and desolation to the settlements as far South as Massachusetts; until, in 1759, Roger's Rangers swept like a tornado to the North, determined to exterminate the whole brood of tigers; and thoroughly they did their work, for few Abenakis outlived the storm of death.

This region of crags and vales, clear cold trout ponds and rapid streams; of beautiful rocks and bracing air, is the rapture of artists and a joy to all who visit it. No marshland of any sort to breed the pestiferous mosquito, and black flies are unknown; but a country full of hospitality and homely ways; a delight to the eye and a refuge for the weary.

THE ∴ OLD ∴ RELIABLE ∴ HOUSE.

ESTABLISHED 1853.

W. S. WALKER

— c ————— Is still in the "OLD STAND," opposite the Seminary Clock, ————— o

1711 NOTRE DAME STREET,

Has received a Direct Importation of all New and Choice Designs.

FINE DIAMONDS set in RINGS, EARRINGS, LACE PINS AND
SCARF PINS. FINE GOLD AND SILVER WATCHES AND CHAINS.
FINE GOLD AND DIAMOND JEWELRY OF EVERY DESCRIPTION.
SOLID SILVER AND SILVER-PLATED WARE.

French Carriage and Marble Clocks in Great Variety.

Crown Derby and Wedgewood Ware in beautiful designs.

CALL AND SEE.

OPPOSITE SEMINARY CLOCK,

No. 1711 NOTRE DAME STREET.



CLYDE RIVER RAPIDS.

FINE FURNITURE EMPORIUM

RENAUD KING & PATTERSON,

(LATE WM. KING & CO.)

Manufacturers and Importers of

FINE FURNITURE AND
BEDDING,

+++

ENGLISH BRASS AND IRON
BEDSTEADS.



Manufacturers and Importers of

AUSTRIAN BENT WOOD
FURNITURE,

+++

REED AND RATTAN
GOODS.

We keep one of the Largest Stocks in the Dominion, and make a Specialty of Fine Goods at Moderate Prices.

Warerooms: 652 CRAIG STREET.

Factory: 62 & 64 COLLEGE STREET.

N. B.—The OWL'S HEAD MOUNTAIN HOUSE has been furnished throughout by this firm.

N,

ters of

T WOOD
RE,

ATTAN

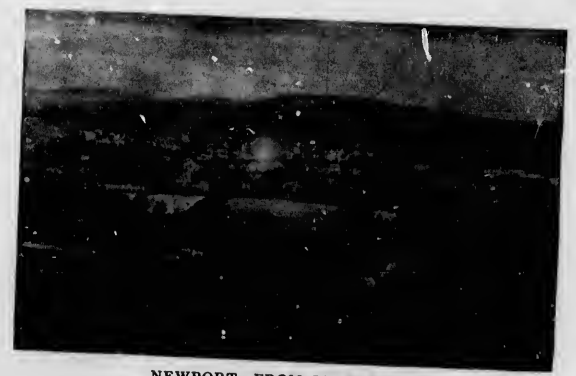
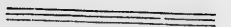
te Prices.

STREET.



“ First a lake

Tinted with sunset ; next the wavy lines
Of the far reaching hills ; and yet more far,
Monadnoch lifting from his night of pines
His rosy forehead to the evening star.”



NEWPORT, FROM PINE HILL.

MEMPHREMAGOG, in the language of the lost Abenakis, meant the great sheet of water, but other tribes called it Memplowboque, beautiful water ; it is more than thirty miles in length ; of varying width, from one to five miles ; great and, in some localities, of unknown depth.

This lake has sometimes been compared to Lake George, the two being of much the same size, and geographically not so distant, which probably accounts for their being classed together ; but each has its own charms, and Memphremagog though endowed with an awkward name, thinks she more than makes up for it in grace and stately grandeur ; at least those travelers who know them both say so.

LARGE STOCK.

Drugs, Books,
and Fancy Goods.

All the new and popular
books of the day.

Fine Stationery and
Writing Materials.

FRUIT
Confectionery and Cigars.

Souvenirs and Views
OF LAKE MEMPHREMACOG.

HALL'S DRUG STORE



Newport, Vt.

Four Doors West of Memphremagog
House.

Soda and Mineral Waters
ON DRAUGHT.

Bass, Longe, and Trout
Fishing Tackle.

PRESCRIPTIONS
Compounded Accurately
At Reasonable Prices.

J. R. HALL,
PHARMACIST.

CLYD

ores and
ke, altho
the West,

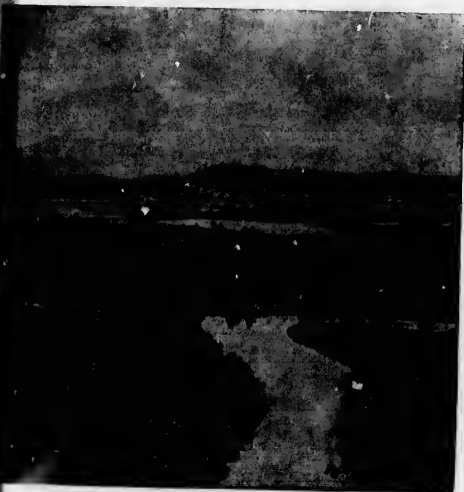


al Waters
GHT.

and Trout
ackle.

TIONS
Accurately
Prices.

LL,
HARMACIST.



CLYDE RIVER—NEWPORT IN DISTANCE.

ores and tasteful residences, is at the foot of Prospect Hill on Prospect Point, and practically at the head of the lake, although an arm extends about three miles south, and receives contributions from two small rivers, the Black on the West, and the Barton at the southern end. The fanciful Clyde rushes in at West Derby.

IT has for years been famous for the fish taken from its waters; in its clear, cold depths, the Muskalonge (a species of lake trout) grows to perfection and enormous size; experienced fishermen not infrequently landing monsters of from thirty to forty pounds each. We hesitate to here make record of the quantities taken by different ones, suffice to say that one old fisherman's log book shows more than twenty-six hundred pounds that he caught and sold in one week. Ask him how he did it, with a twinkle in his eye, he will tell you that he spat upon the hook.

These are not George Washingtons either, but mostly loyal sons of "our own Queen," and would scorn to be so ungallant as to tell a lie.

There are many other fish to be caught, the lake having been stocked with black bass; pickerel are also very plentiful.

The rapidly expanding village of Newport, Vt., containing many fine

MERCHANTS'
COFFEE AND SPICE MILLS.

S. MARROTTE, PROPRIETOR.

MANUFACTURER AND IMPORTER OF

Coffees, Spices, Mustard, Cream Tartar, &c.

*Coffees Roasted and Spices Ground by the most Improved Machinery
for the Trade.*

OFFICE AND MILLS:

No. 43 AND 45 COLLEGE STREET,

MONTREAL.

Proprietor and Sole Manufacturer of the
o—CELEBRATED WINDSOR BAKING POWDER.

TELEPHONE No. 1909.

THE
ROYAL CANADIAN

INS. CO.

MONTREAL, CANADA,

Head Office: 157 St. James Street.

DOES A FIRE AND MARINE BUSINESS

Premiums Received in 1888	\$625,238.48
Total Disbursements	578,316.25
Balance to Credit of Profit and Loss Account	\$46,922.23

Capital Stock	\$500,000.00
Capital Stock, paid in	400,000.00
Assets, January 1, 1889.	745,713.89

G. H. McHENRY, Manager.

ANDREW ROBERTSON, President. HARRY CUTT, Secretary.

DIAN

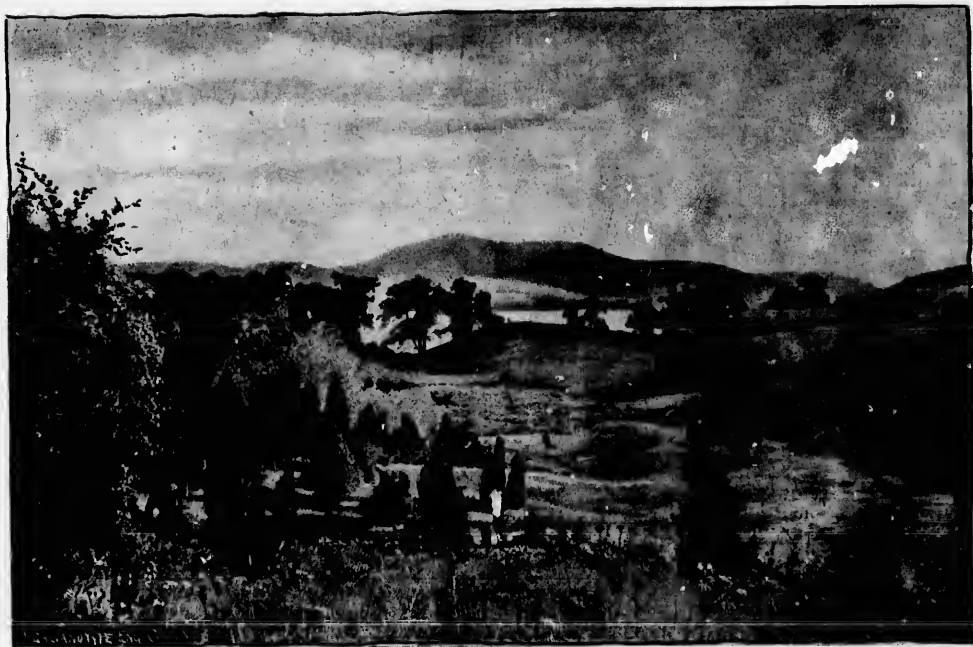
reet.

BUSINESS

\$625,238.48
578,316.25
\$46,922.23

\$500,000.00
400,000.00
745,713.89

JTT, Secretary.



LAKE MEMPHREMAGOG, FROM STANSTEAD.

PHŒNIX

FIRE INSURANCE COMPANY,

OF LONDON, ENG.

ESTABLISHED 1782

AGENCY ESTABLISHED IN CANADA IN 1804.

GILLESPIE, PATERSON & CO.

GENERAL AGENTS FOR DOMINION.

INSURANCES EFFECTED IN ALL PARTS
OF THE WORLD.

CLAIMS SETTLED WITH PROMPTITUDE
AND LIBERALITY.

Head Agency Office; 35 St. Francois Xavier St., Montreal.

R. MACD. PATERSON. MANAGER.

THE
bel
of the I
As
e, like
andy or
more is
The
eased to
inding
ne Cana
Boston &
shore unt
for Queb
quite bea
Past
the haml
high grou
ay are t
ell. G

THE railway station and extensive steamboat quay abut each other. The commodious iron steamer, "Lady of the Lake," belongs to the Railroad Company, and makes two trips daily down the lake and return. The steam launch, "Owl," of the Mountain House, also connects with the early morning trains.

As we slip our moorings, the jagged summit of Owl's Head, although twelve miles distant, claims attention, but we, like it, are blinking in the early morning, and our vision seeks nearer and more distinct objects. Indian Point, of sandy origin, on the right, is the summer muster-ground of the Vermont militia—the Green Mountain boys. The westerly shore is craggy with sharp rocky points and charming bays.

The trackway of the South Eastern Railway, recently leased to the progressive Canadian Pacific Company, is seen winding in and out among the hills and reaching out towards the Canadian metropolis, Montreal, in the northwest, while the Boston & Maine R. R. keeps somewhat back from the easterly shore until the Province line is reached, when it takes a bee-line for Quebec in a northeasterly direction, skirting the shore of the quite beautiful Lake Massawippi.

Past Indian Point, a broad bay sets in, and close by is the hamlet of North Derby, the village of Stanstead being on high ground in the remote distance; at the broadening of this bay are two islands, the Twin Sisters, also known as Black and Bell. Gull Rock bobs up nearer the shore.



NORTH FROM WEST DERBY

W. W. TRUE.

FIRST-CLASS Plumbing
Work in all Branches
Given Prompt Attention.

ONE of NEWPORT'S ATTRACTIONS not to be overlooked is the COMMODIOUS NEW STORE of

TRUE & BLANCHARD,

Main Street,

with its Magnificent Stock of

E. C. BLANCHARD.

HEATING by Hot Water,
Steam or Hot Air a
Leading Specialty.

TRUE & BLANCHARD,
Main St., Newport, Vt.

STOVES AND HARDWARE

TRUE & BLANCHARD,
Main St., Newport, Vt.

SEWING Machines Sup-
plies and Repairs of
all Kinds.

Of Every Possible Description.

The Most Extensive Business of its kind in this part of the State.

BESIDES A VERY LARGE ASSORTMENT OF

STOVES & RANGES

THE FIRM CARRY A COMPLETE STOCK OF

Shelf Hardware, Edge Tools, Agricultural Tools, and Repairs Tinware, Wooden-ware, Lead and Iron Pipe Fittings, Valves, Pumps Etc., Etc.

REFRIGERATORS Kitchen
Utensils, Rubber Hose,
Pipes and Sprinklers.

BLANCHARD.

HEATING by Hot Water,
Steam or Hot Air a
Leading Specialty.

TRUE & BLANCHARD,
Main St., Newport, Vt.

REFRIGERATORS, Kitchen
Utensils, Rubber Hose,
Pumps and Sprinklers.

HEREABOUTS are many interesting nooks for those who have the time to spare to make short excursions, not the least of which is John's River; and Lake Park has become quite a resort for small parties. The rural Lineborough village farther north, and east of that is Beebe Plain where are extensive fruit and flower nurseries. Canadian apples are widely celebrated because of their fine flavor.

Noblest of the island kingdoms, Province, is now straight ahead; it counts one hundred acres within its boundaries, and is owned by Mr. Zabriskie, of New York, who has built a modern cottage upon the summit, all the rooms of which are made of the many beautiful hardwoods of the region. The boat house on the eastern side is the largest, and one of the best appointed about the lake; it contains a large steam launch and a regular flotilla of row boats.

The Province line—the 45° parallel of latitude—crosses near the southern end of this island, and as we pass from the domain of "Uncle Sam" to that of "Her Majesty," a shrill blow of the steamer's whistle apprises us of the fact.

We are now advancing toward scenery of more than ordinary grandeur. Throughout this region the rock strata has been broken and changed by terrific volcanic upheavals; the granite foundations of the world seem to have melted and, under enormous pressure, been forced upward into such stately monuments as Owl's Head, Elefantis and Orford



MR. LINDSAY'S COTTAGE.

B. E. STOCKWELL

Photographer

DEALER IN PAINTS, OILS, AND EVERY DESCRIPTION
OF

ARTISTS' MATERIALS

With Assortment of

LAKE VIEWS

ETCHINGS AND ENGRAVINGS

LARGE STOCK OF FRAMES ON HAND AND
MADE TO ORDER

ORGANS, PIANOS AND SHEET MUSIC

MOULTON'S BLOCK, NEWPORT, VT.

JOHN L. CASSIDY & CO.

(ESTABLISHED 1861)

IMPORTERS OF

CHINA

POTTERY AND GLASSWARE

FROM ALL COUNTRIES

CLOCKS, PLATED GOODS

CUTLERY, LAMPS, CHANDELIERS, GASOLINERS

ARTISTIC GOODS, MIRRORS

WEDDING

AND

NEW YEAR'S PRESENTS

LARGEST ASSORTMENT IN CANADA

339 & 341 ST. PAUL ST., MONTREAL

YDY & Co.

GLASSWARE

CHIPS
D GOODS
TERS, GASOLERS

MIRRORS

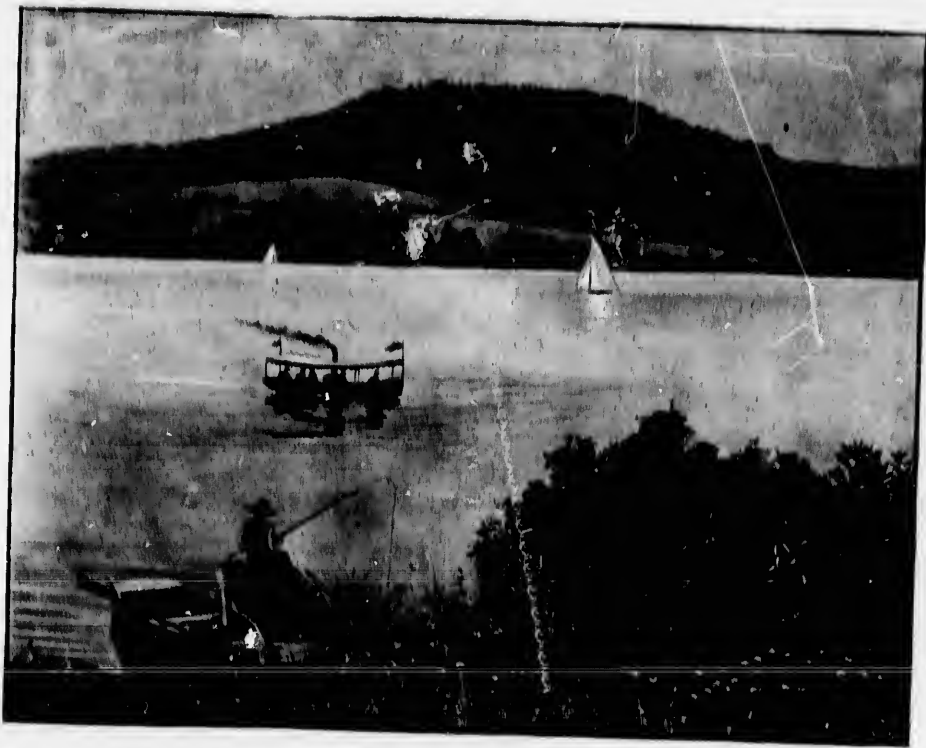
PRESENTS

CANADA

T., MONTREAL



HEAD
MOUNTAIN
FROM
PROVINCE
ISLAND.



STREAM
LAUSCH
"OWL"
MAKING
HER
TRIP
FROM
NEWPORT
TO
OWL'S
HEAD.





H A NELSON & SONS,

IMPORTERS AND WHOLESALE DEALERS IN

EUROPEAN AND AMERICAN

Fancy Goods,

AND MANUFACTURERS OF

BROOMS BRUSHES WOODENWARE

AND

MATCHES.



59, 61 and 63

St. Peter Street,

MONTREAL.

56 and 58

Front St., West,

TORONTO.



E
India
earth
for s
all o
7
Islan
us ;
near
head
and
stone
but w
E
T
waters
from
C
It, has
beauti



59, 61 and 63

St. Peter Street,

MONTREAL.

56 and 58

Front St., West,

TORONTO.



EVEN in modern times these pyramids have been rocked by earthquakes, the most famous being in 1663, when the Indians, believing their forefathers were coming back to the earthly hunting grounds, kept shooting and making a frightful din, for said they: "it's plain there's not game enough on earth for all of us."

To the east of Province is the small cedar-covered Tea-Table Island, Shaggy Bear mountain, on the western shore frowns upon us; at a considerable distance on the right is Whetstone Island, near the entrance to Fitch bay—a long arm of the lake, at the head of which are extensive saw mills. This Island, about a mile and a half long, takes its name from the fine novaculite oil stone which, years ago, was quarried by a company of Yankees, but who were driven away by the "King's" soldiers as trespassers.

Bay View Park and Magoons Point are directly ahead, while



MR. A. C. ZABRISKIE'S COTTAGE—PROVINCE ISLAND.

dome-like Round Island is to the left.

The lake is now forced into narrower limits, the scenery rivaling that of Loch Lomond, the queen of Scottish waters, and a feeling akin to awe comes over us as we glide within the shadow of Owl's Head, which springs precipitously from the lake and soars to the lofty height of 2,743 feet above it.

Owl's Head Mountain House is charmingly situated close to the lake and at the foot of Owl's Head Mountain. It has become widely known as being by the best fishing grounds of Lake Memphremagog, as well as of its most beautiful scenery.

J. RATTRAY & Co. MONTREAL

MANUFACTURERS OF

FINE CIGARS

INCLUDING THE CELEBRATED

Crusader and Hero

BRANDS

IMPORTERS OF

TOBACCONISTS' GOODS

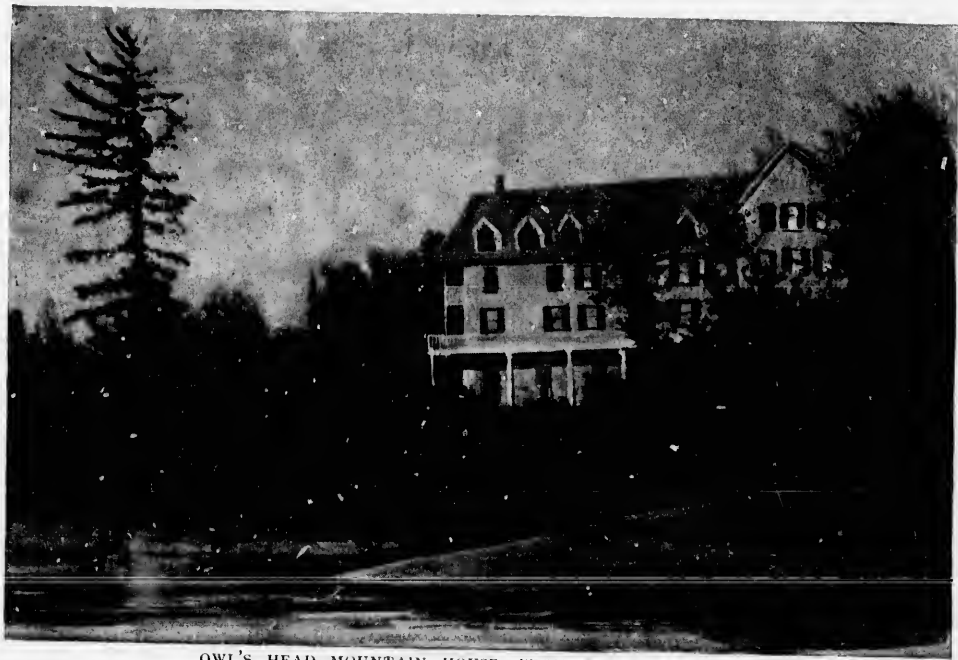
AND HAVANA CIGARS.

AL

ero

OF

CIGARS.



OWL'S HEAD MOUNTAIN HOUSE, FROM THE LONG WHARF.

F. M. SHERMAN.

SHERMAN & BRADY,

(Successors to Sherman & West.)

WHOLESALE AND RETAIL DEALERS IN

Flour, Feed, Nails, Lime, Cement,
Kerosene Oil, Lanterns, Globes,
Lamp Chimneys,

Salt in Bulk and Packages of all Sizes.

COAL OF ALL KINDS.

Sewer Pipe of all Sizes Constantly in Stock.

OLD WHOLESALE STORE, opp. Pass. Depot, NEWPORT, VT.

C. N. BRADY.



NEWPORT ◦ STEAM ◦ LAUNDRY.

CHAS. A. PHILLIPS, Proprietor.

Best Laundry in Northern Vermont.

*Fine Finish on Cuffs, Collars and Shirts.
Silk and Fancy Articles Done by Hand.*

DOMESTIC FINISH IF ORDERED.

SPECIAL ENDEAVORS

To Please Transient Tourists and
SUMMER GUESTS.

Come Once and You Will Come Again.

Prices Moderate.

BAY VIEW ST., NEWPORT, VT.

LAUNDRY.

Director.

in Vermont.

and Shirts.
Done by Hand.
ORDERED.

WORKS
Tourists and
ENTS.

Prices Moderate.

PORT, VT.

THE hotel grounds are extensive, comprising over 500 acres of mountain, meadow, garden and wood lands. The house has just been enlarged, decorated and newly furnished, it is supplied with delicious cold water from mountain springs, carried through pipes to each floor. It accommodates 100 guests. The cuisine is excellent, and every effort is made to in all ways please its patrons. The rooms are large, and all command charming views. Terms for board are moderate. The well kept Lawn Tennis and Croquet grounds contribute to the pleasures of the place; also a Bowling Alley, romantically situated at the brow of a cliff, not far from the hotel. There is a large pavilion building for hops and theatricals, also a stable. The boat houses are on a gradually shelving beach, and contain a supply of good row

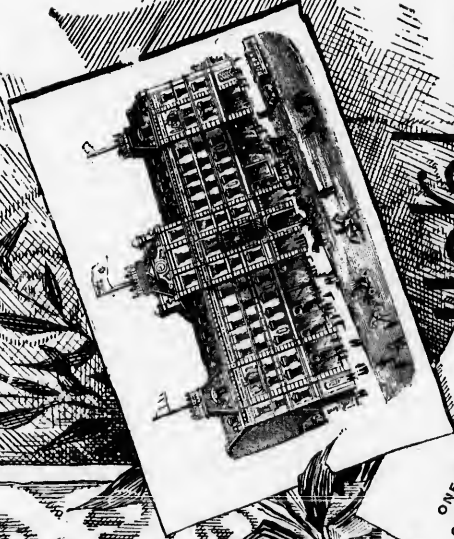


A DAY ON THE SAND SPIT.

boats, also the steam launch, "Owl," which is expressly for the convenience and pleasure of the guests of the house.

The ascent of Owl's Head involves about two hours' climb. The pathway from the hotel is in good condition, ropes being provided for assistance in climbing the steeper places.

Leaving the Mountain House, we pass the flourishing gardens and pasture lands that supply the hotel with its delicious vegetables and cows with the cud of contentment. We soon come to the source of much comfort, the never failing spring of cold, sweet water, which furnishes abundant supply to the hotel, also for the trout ponds below.



ONE OF THE MOST
CENTRAL HOTELS IN
THE CITY, ELEGANT-
LY FURNISHED.
ACCOMMODATION
FOR 400 GUESTS

RATES:
\$2.00 TO \$3.00 PER
DAY.

Hotel **BALMORAL**

MONTREAL

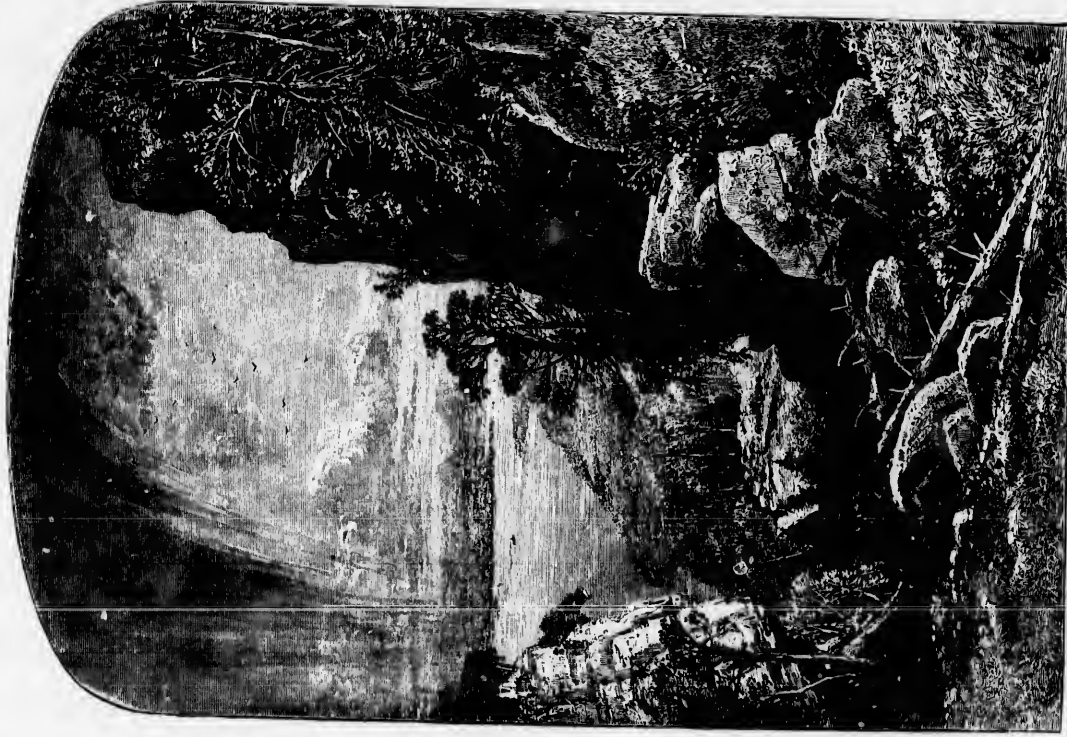
W. WOODRUFF
MANAGER



W. WOOD

W. WOOD

W. WOOD



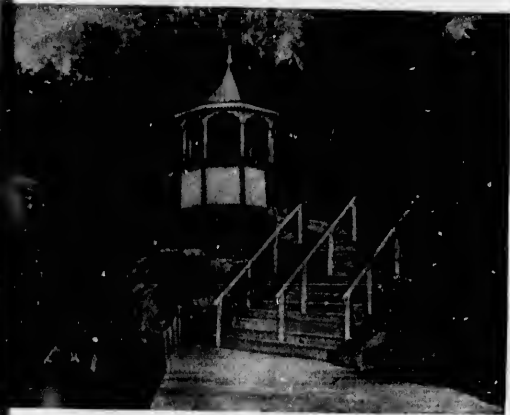
LOOKING SOUTH, FROM TOP OF OWL'S HEAD,
REDUCED FROM "PICTURESQUE AMERICA," BY PERMISSION. COPYRIGHTED BY D. APPLETON & CO.

Thomas Ligget,

GLENORA BUILDINGS,

HAS THE **LARGEST** Carpet premises in Canada, fitted up on the most improved style; and carries the largest stock of the **NEWEST PRODUCTIONS** of any house in **CARPETS, CURTAINS, OIL CLOTHS, LINOLEUMS, &c.**, which he disposes of all at net prices, thereby assuring cash purchasers of the best value at all times. - - - - -

1884 NOTRE DAME STREET,
MONTREAL.



STEPS AT OWLS HEAD LANDING.

THE path now bends to the right, and we soon are beneath the tent-like shape of Shelter Rock. The climb has now commenced in earnest and, as we occasionally pause for rest, catch glimpses through sheltering boughs of the panorama of lake and islets, mountains, wooded slopes, and rich farm lands, beneath us.

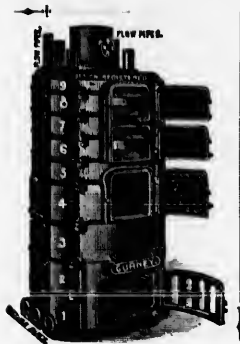
The path now dodges in and out around huge boulders and by giddy cliffs, through Fatman's Misery and over fallen trees; finally, the summit reached, we stop for breath and a drink of water from a natural pocket in the rock; then looking about are thrilled by the rare beauty of this landscape, and as the picture below becomes familiar to our vision, this feeling gives place to glad satisfaction.

The awful power of the volcanic period speaks to us from the four riven peaks of the summit. In one of the intervening chamber-like ravines, each year, on the 24th of June, the Stanstead Lodge of Free Masons communes, and on the walls of the Mountain Mystery are cut the cabalistic signs of the order.



GURNEY'S
—IMPROVED—

Hot Water Heater



CONTAINS EVERY KNOWN IMPROVEMENT IN HEATING.

Immense Heating Power. Economical in Fuel. Easy to Manage and of Elegant Design.

E. & C. GURNEY & CO.,

Wholesale Manufacturers of

Heaters, Radiators, Steam Fittings, Scales, Grates, &c.

385 & 387 ST. PAUL ST., MONTREAL.

Circulars on Application.



ter

Fuel. Easy
gn.

CO.,

Grates, &c.

REAL.



OWL'S HEAD MOUNTAIN, FROM KNOWLTON LANDING.

BALL'S



CORSETS

BONED WITH KAPO.

Try them and you will wear no other. They need no "breaking in." Satisfaction guaranteed, or money refunded after 3 weeks' wear, even if so soiled as to be unsalable.

Several other styles of the Kapso Boned Corsets in stock. Also, Stone's Waists for ladies. Double V Waists for ladies and misses. Bustles, nearly every kind at

GILMAN'S.

It is a delightful trip from OWL'S HEAD
MOUNTAIN HOUSE to

GILMAN'S

LARGEST STORE IN NORTHERN VERMONT.

DRY GOODS — FANCY GOODS.

New Cloak Department

JUST OPENED THIS SEASON.

Portiers, Lace Curtains and Drapery Materials.

Holland and Opaque Window Shades

MILLINERY.

LADIES' FURNISHINGS. GENTLEMEN'S FURNISHINGS.

Art Materials

Everything kept in a first class store can be found at

GILMAN'S, ~ NEWPORT, VT.



Full line of Hough & Ford's Celebrated
Rochester, N. Y., Boots. Most perfect fitting shoe
made.

MISSIES' SHOES. CHILDREN'S SHOES.

SCHOOL SHOES.

GENTLEMEN'S HAND-SEWED SHOES.

ALSO,
GOODYEAR WELT AND COMMON MA-
CHINE SEWED SHOES.

For hard wear try "No. 1" for Men and the

BEST LINE OF SLIPPERS AT

GILMAN'S.

THIS
to
The foot
ward
mountain
home of
soaring
boulder
leaving a
near the
succeeded
considered
(32)



Hough & Ford's Celebrated
 Boots. Most perfect fitting shoes.

CHILDREN'S SHOES.

TOE SHOES.

HAND-SEWED SHOES.

AT ALL TIMES,
 THE MOST COMMON AND
 BEST SEWED SHOES.

FOR "Fit All" for Men and Boys.

SLIPPERS AT

MAN'S.



THIS sketch shows the "Lady of the Lake" about
 to land (from north) at Mountain House wharf.
 The foot spur of Owl's Head, Blue Point, climbs
 upward precipitously out of the lake; high up this
 mountain side is "Eagle Nest," for many years the
 home of the birds of liberty that are often seen
 soaring above the lake. A short time since a huge
 boulder came crashing down from that lofty eyrie,
 leaving a clean cut path in its course, and now lies
 near the shore. Some adventurous spirits have
 succeeded in climbing to near the nest, but it is
 considered quite unsafe.

(32)



OWL'S HEAD LANDING.

REDUCED FROM "PICTURESQUE AMERICA," BY PERMISSION,
 COPYRIGHTED BY D. APPLETON & CO.

NOTMAN

PHOTOGRAPHER TO THE QUEEN

MONTREAL:

17 Bleury St. Room 110 Windsor Hotel.

BOSTON:

3 Park St. 184 Boylston St.

HALIFAX:

George Street.

ALBANY:

48 N. Pearl Street.

VIEWS

OF

All Points of Interest in Canada,

INCLUDING

Halifax,
Montreal,
Toronto,
Manitoba,

St. John, N. B.,
St. Lawrence River,
Lake Memphremagog,
British Columbia,

Quebec,
Ottawa,
Winnipeg,
Rocky Mts.

Portraits, Groups,

Enlargements,

Miniatures,

ETC.

Every Style of High Class Artistic Work.

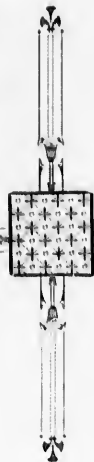
Photo Stock,

Amateur Outfits,

Kodak Cameras,

Stanley Dry Plates,

Chemicals, Etc.

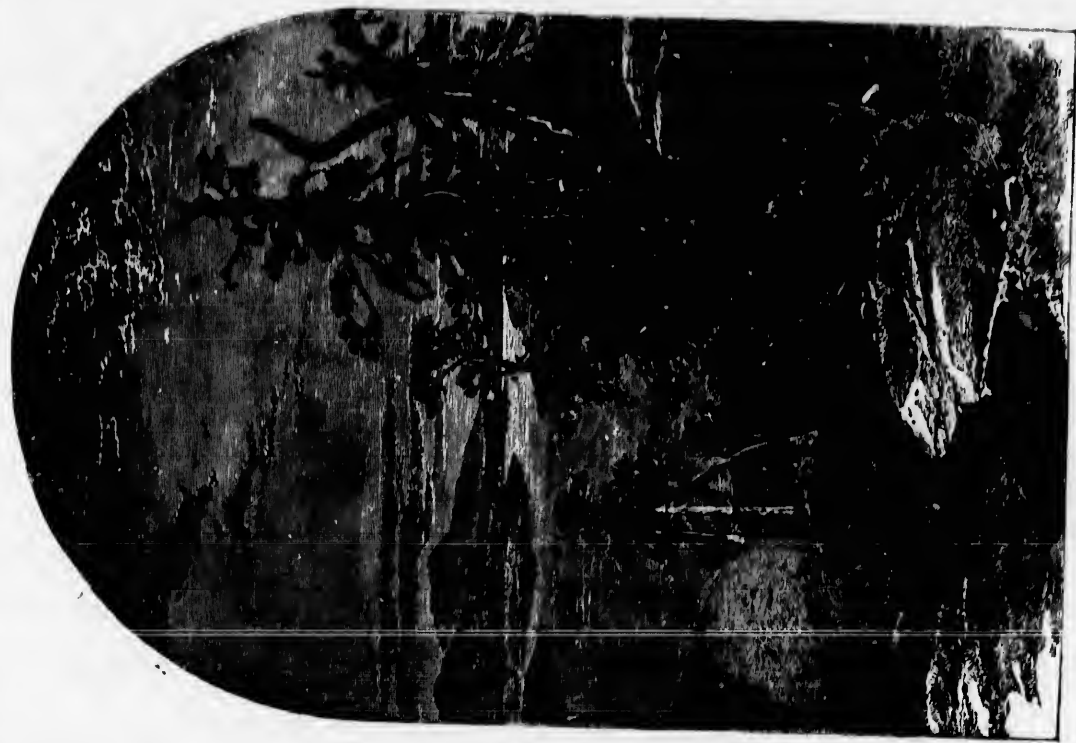


• • • • •

ments,
Miniatures,

Artistic Work,

erases,
Dry Plates,
Chemicals, Etc.



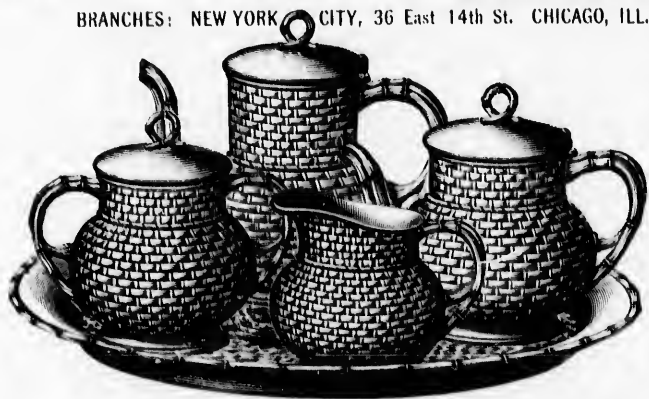
NORTH, FROM TOP OF OWL'S HEAD.
REDUCED FROM "PICTURESQUE AMERICA," BY PERMISSION, COPYRIGHTED BY D. APPLETON & CO.

SIMPSON, HALL, MILLER & COMPANY

16 AND 18 DEBRESOLS STREET, MONTREAL.

HEAD OFFICE AND FACTORIES, WALLINGFORD, CONN.

BRANCHES: NEW YORK CITY, 36 East 14th St. CHICAGO, ILL., 137 and 139 State St. PHILADELPHIA, 504 Commerce St.



Sole Manufacturers and Proprietors of the

Celebrated Wm. Rogers Knives, Forks, Spoons, &c.

MANUFACTURERS OF THE

**FINEST QUALITY
SILVER-PLATED WARE**

CONSISTING OF

Tea Sets, Walters, Cruets, Pickle Castors,
Butter Dishes, Wine Stands, Epergnes,
Fruit Stands, &c., &c.

THE TRADE ONLY SOLICITED.

SIMPSON, HALL, MILLER & COMPANY

16 and 18 DeBresols Street, Montreal.

MPANY

N. _____
504 Commerce St.

ns of the
orks, Spoons, &c.

HE

ED WARE

Pickle Castors.
s, Epergnes,
&c.

ICTED.

MPANY



VIEW DOWN THE LAKE FROM MOUNTAIN HOUSE PIAZZA.

THE :: DOMINION :: LINEN :: WAREHOUSE,

203 ST. ANTOINE STREET, MONTREAL, CANADA.



Have . always . on . hand . a . large . range . of . Table . Napery . and . Household . Linens
of . every . description. ::

Every . week . brings . us . more . deliveries . of . the . latest . ideas . in . the . line . of
Table . Napery . therefore . house . furnishers . can . always . rely . upon . here . getting . the
latest . productions . in . the . art . of . linen . manufacture. ::

Orders . taken . for . Special . Designs . with . Crests . Initials . or . FULL . NAME
A . number . of . samples . to . choose . from . showing . variety . of . styles. ::

THE :: DOMINION :: LINEN :: WAREHOUSE,

JAS. A. OGILVEY & SONS, Wholesale and Retail,

P. O. BOX 1340.

203 ST. ANTOINE STREET, MONTREAL, CANADA.

SKIN
Ho
end is a
called SK
the war c

"

"

"

"

"

"

"

"

"

"

"

"

"

"

"

"

"

"

"

"

"

"

"

"

"

"

"

HOUSE,

SKINNER'S ISLAND is a short mile east from the Mountain House, and lies close to the lake. At the Northwestern end is a cavern, about twelve feet high and thirty feet deep, called Skinner's Cave, the home of a noted smuggler during the war of 1812-14.

ehold . Linens

the . line . of
getting . the

FULL . NAME

USE,

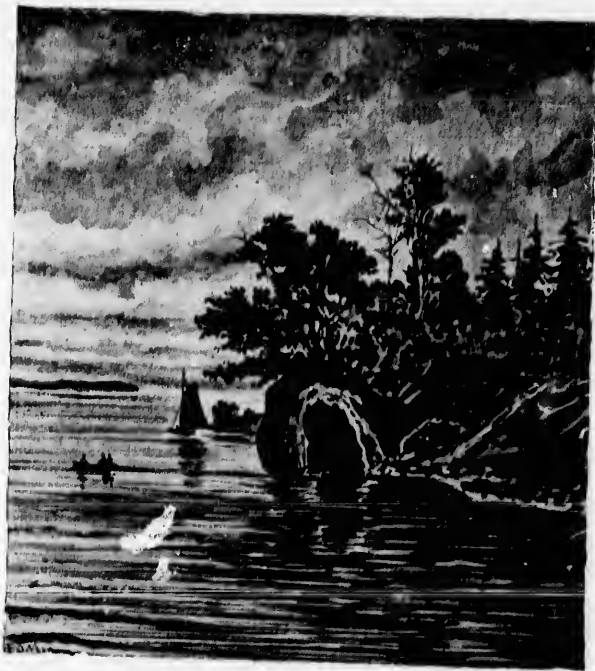
EAL, CANADA.

" FANCY a fellow, brawny and brown,
With very black hair that hangs shaggly down,
With whiskers remarkably bushy and black,
With fists which might give a most terrible thwack ;
With very fierce eyes under dark heavy brows,
That flashed like a cat's when it springs on a mouse,
Or like coals in a cavern that gleam fiery red,
With a great Roman nose, so uncommonly red.

* * * *

Of all the smugglers who plied on the lake,
Uriah Skinner was hardest to take,
The officers hunted him often, and yet
Uriah Skinner they never could get !
* * * But that bold chap
Was caught at last like a rat in a trap !

* * * *



ENTRANCE TO SKINNER'S CAVE.

FINLAYSON, HIRSCH & CO.

IMPORTERS AND WHOLESALE

WINE * AND * SPIRIT * MERCHANTS

46, 48 & 50 ST. SACRAMENT ST., MONTREAL, CANADA.

Are prepared to supply the Trade with Celebrated Brands of

FINE PORTS, SHERRIES, BRANDIES,

SCOTCH AND IRISH WHISKIES,

OLD TOM GINS, HOLLAND GINS,

GINGER WINES, JAMAICA RUM,

Etc., Etc., Etc.

In Wood and Bottle.



SOLE PROPRIETORS
OF THE
CELEBRATED

JUBILEE RYE WHISKEY

Sold by
All Grocers and Hotels
From the Atlantic to the Pacific.

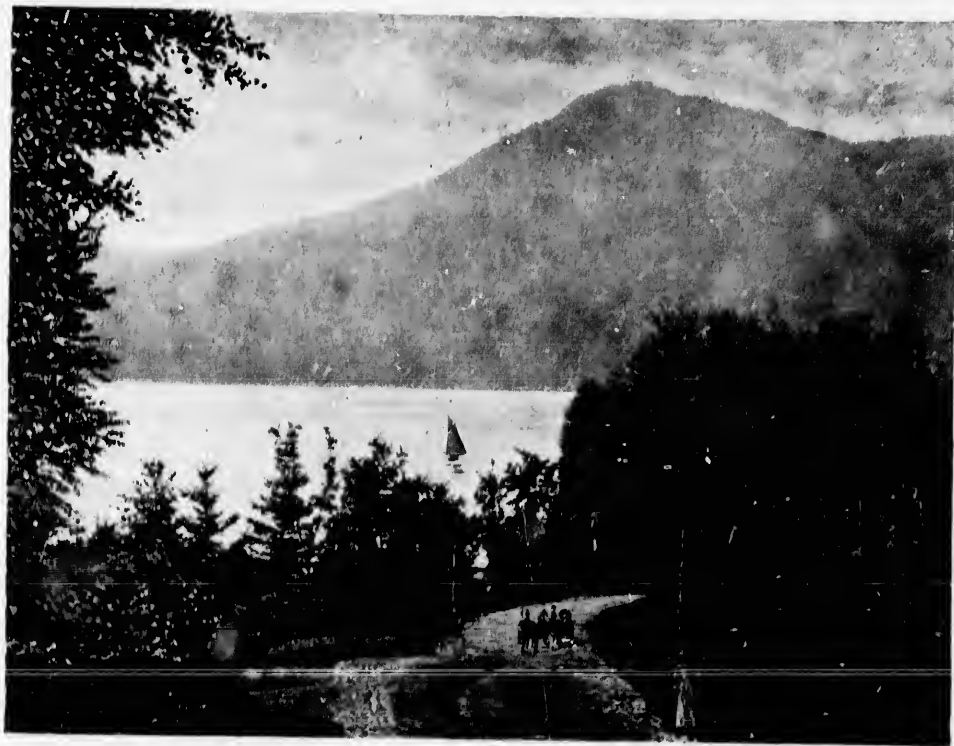
& CO.

ENTS

ETORS
ED

WHISKEY

to the Pacific.



OWL'S HEAD, FROM CEDARVILLE.

S
A
F
E
S

GOLDIE & McCULLOCH'S

ARE THE BEST!!

Gold Medal Bank Burglar-Proof,
Gold Medal Fire-Proof,
Gold Medal Vault Doors,

AND

ALL HIGHEST PRIZES WHEREVER EXHIBITED.



ALFRED BENN,
MANAGER AT MONTREAL, 298 ST. JAMES STREET.

N. B.--- Terms of Payment Easy --- Second-Hand Safes Sold Very Cheap.

Night o
The ni
p
Stas sh
And the
o
Above a
Who, as
At that
or
Very kee
Motionle
Were ar
H
Oh, Skin
for
*
Now the
And Skin
For his b
Swiftly as
And he h
Now they
His heels
go

Night on the lake so clear and calm,
The night breeze sings in the trees its
psalm;

Stars shine bright in the dark blue sky,
And the crescent moon sails in her glory
on high:

Above and below, it is all serene,
Who, as he gazed on the peaceful scene
At that moment, would fancy that nine
or ten

Very keen sighted and well-armed men,
Motionless, and still as the dead,
Were ambushed under the great Owl's
Head?

* * * *

"Look—don't you see!
That, Skinner must be!"

Oh, Skinner! bold smuggler! there's peril
for thee!

* * * *

Now the chase grows eager and hot,
And Skinner himself thinks so too, I wot,
For his boat speeds over the waters blue,
Swiftly as lieth an Indian's canoe,
And he has an Indian's craftiness too;
Now they near him—now they are on
His heels as it were—and now—HE IS
GONE!



SKINNER'S CAVE.

But where?
How they stare
And rave and swear!

* * * *

But all they find is the empty boat,
Which one of the officers pushes afloat;
The fruitless search they at length give
o'er,

And Uriah Skinner was never seen more!

* * * *

Nearly six years had passed away,
When a fisherman out in a storm one day,

* * * *

In the side of an island, a cave he spied,
And in less than a minute, was safe inside.

* * * *

He looked above, beneath, and around,
And what do you think the fisherman
found?

Neither a golden nor a silver prize,
But a skull with sockets where once were
eyes;

Also some bones of arms and thighs,
And a vertebral column of giant size:

* * * *

'Tis needless to say
In this later day,

'Twas the smuggler's bones in the cave
that lay.

FENWICK - & - SOLATER,

42, 44 & 46 FOUNDLING STREET, MONTREAL.

TENTS — TARPAULINS — HORSE AND
WAGON COVERS — FLAGS — LIFE
BUOYS — BELTS — &c.



ASBESTOS

Steamboat, Steamship, Railway, Mill
and Engineers' Supplies.

Rope, Oakum, Tar, Pitch, Oils, Waste, Hose, &c.

Manufacturers of

FILES, COTTON WASTE, CANVAS GOODS
ASBESTOS STEAM PIPE AND BOILER COVERINGS.

WRITE US BEFORE PURCHASING.



OWL'S HEAD, FROM LAKE VIEW PARK.



ilway, Mill
plies.
se, &c.

S GOODS
COVERINGS.

H. R. IVES & CO.,

MANUFACTURERS OF

Hardware, Stoves, Iron Bedsteads

ORNAMENTAL RAILINGS, CRESTINGS, ETC.

SOIL PIPE,

CASTINGS TO ORDER.

Barb Wire Fencing

TWO AND FOUR POINT.

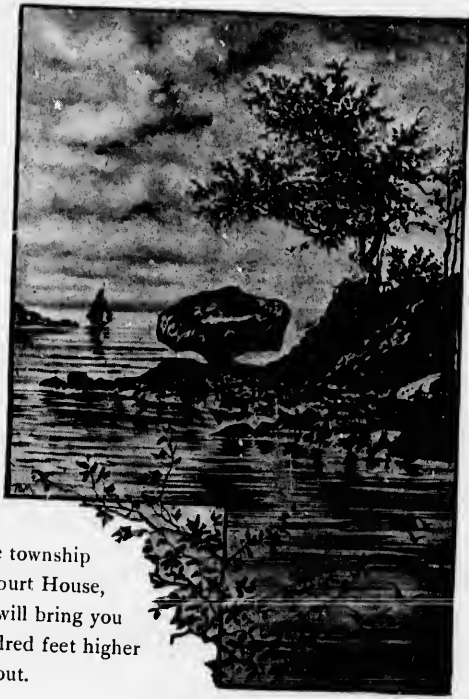
OFFICE AND WORKS:

QUEEN STREET, MONTREAL.

M
B
fisherme
about it
of Skin
breadth
rising p
where l
noted B
of many
Near
most de
whose S
eastern
Molson's
The rug
shop, etc.
Mansonv
of East F
and pay
near to C
than Men

MINNOW ISLAND, named from its diminutive size, is close to Skinner's, but nearer the shore. It is one of the favorite haunts of the old fishermen, who have taken great quantities of "lunge" from the deep water about it, and is a delightful place for a day's sport. Less than a mile north of Skinner's is Long Island, about a mile and half in length, but of no great breadth; it is craggy, and has sharp cut shores, the rock for most part rising perpendicularly from the lake, so that there are not many places where landings can conveniently be made. At the southern end is the noted Balance Rock, firmly poised on a solid foundation, this granite mass, of many tons weight, silently receives the homage of the *curious*.

Nearly a mile further north is Molson's Island, one of the largest and most desirable in the lake; it is the property of the noted Montreal banker whose Summer residence is on a prominent site, on the mainland, near the eastern shore. Perkin's Landing, on the western shore, is about opposite Molson's Island, and is one of the most interesting places about the lake. The rugged little village of Vall Perkins, containing one store, a blacksmith shop, etc., is half a mile back from the landing; from it are roads leading to Mansonville, the county seat of Broome County, and the village borough of the township of East Potton. If the Town Council are in session, do not fail to call at the Court House, and pay your respects, and be received in true Canadian style. Another road will bring you near to Concert Pond, on the western slope of Mt. Elephantis. It is several hundred feet higher than Memphremagog, in a wild and rugged country, and abounds in brook trout.



BALANCE ROCK, LONG ISLAND.

adse

TO ORDER.

TREAL.

THE

Macfarlane Milling Company,

SHERBROOKE, P. Q.

SUPPLY THIS FINE HOTEL WITH

Flour, Cornmeal, Oatmeal, Etc.

Anyone desiring a PURE and EXCELLENT article are confidently recommended to try their famous "HECUBA" Flour.

any,

Etc.

confidently

our.



SARGENT'S BAY, FROM GEORGEVILLE,

DR. M. T. HAMILTON,

→ DENTIST. ←

Dental Work of Every Description Done Promptly.

RUBBER AND CELLULOID PLATES,

also a combination of Rubber and Celluloid with Gold, Silver and other metals at reasonable prices. For the painless extraction of teeth I administer Ether, Gas and Chloroform. Parties not able to come to office to have mouths cleared for artificial teeth and to have impressions taken, I will go to their homes without extra charge if not too far. Prices for the above named plates range from Six to Twenty-five dollars according to quality.

NEWPORT, VT.

A. H. KELLOGG,

Printer.

SPECIAL FACILITIES

FOR

Printing Fine Color

AND Catalogue Work.

100-102 READE STREET,

NEW YORK.

GG,

TIES

OR

DORK.

REET,



MOUNT ELEPHANTIS AND CONCERT POND.

MOUNT ELEPHANTIS, sometimes called Sugar Loaf, probably because at the southerly end a rounded peak towers above the rest of the mountain, which is about semi-circular in form and enclosing within this horseshoe a large tract of rich table-land more or less cultivated; the locality is sometimes called Sebastopol, because of its impregnable position.

J. PALMER & SON,

1743 & 1745 Notre Dame Street, - - - - - Montreal.

SOLE AGENTS IN CANADA FOR



*Pear's Soaps,
Bertrand's Perfumes,
Dupont's Brushes.*

We carry the best assorted stock of Druggist
Sundries, Chamois, Sponges and Fancy Goods
in Canada.

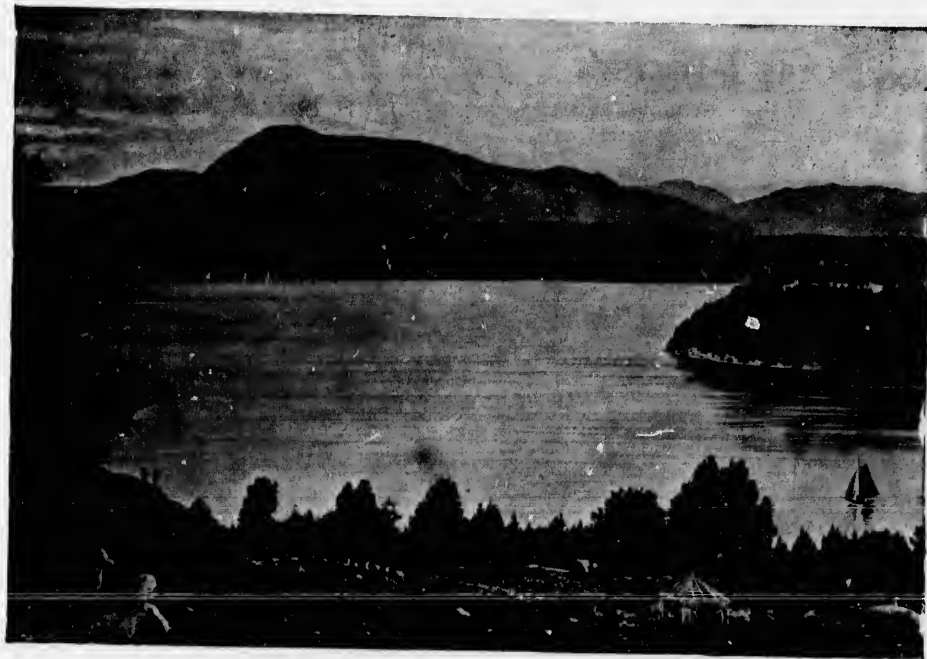
Montreal.



shes.



ruggist
Goods



MOUNT ELEPHANTIS, FROM FERN HILL.

Newport House.



H. W. BISHOP & CO., Proprietors.

Convenient to Depot. First-class Livery. Steam Heat.
Bath Rooms and Excellent Service in all Particulars

W. H. KENYON, MERCHANT-TAILOR,

Has just received a full line of the latest styles of
Foreign and Domestic

SUITINGS FOR SPRING AND SUMMER.

SUITS FOR \$16 AND UP.
PANTS \$4 AND UP

The best line of Cloths ever seen in town.

o o o o o

Also keeps a good line of

GENTS' FURNISHING GOODS.

o o o o o

Particular attention paid to Cleaning and Repairing.

Suits Made to Order on Short Notice.

o o o o o

Fits guaranteed and Clothes made as they should be. Would also
call attention to a full line of

IMPORTED FANCY VESTINGS.

o o o o

FIELD'S OPERA HOUSE, opp Court House, NEWPORT, VT.

THE general outline of the entire mountain is not unlike a sleeping elephant, and seems to bear this resemblance from whichever point of compass it is viewed. There are so many delightful places about Elephantis that we cannot mention them all and so must ask that you explore them for yourselves, feeling assured that whichever path



OWL'S HEAD MOUNTAIN AND MOLSON'S ISLAND.

you follow will lead to a satisfactory end. Of the range that skirts the westerly shore of Lake Memphremagog, Mount Elephantis, in the many qualities that make mountain scenery attractive, is second only to Owl's Head.

J. J. DUFFY & CO.,

Importers and Wholesale Manufacturers

❖ Coffees, Spices, Cream Tartar, Mustard, ❖

STEAM COOKED PEA MEAL & BAKING POWDER.

PROPRIETORS :: CANADA :: COFFEE :: AND :: SPICE :: STEAM :: MILLS.

SOLE MANUFACTURERS OF THE CELEBRATED

Cook's FAVORITE Baking Powder.

MILLS AND OFFICE: 624 & 626 CRAIG STREET,
MONTREAL, CANADA.

), ❖

MILLS.

ET,



SUMMER RESIDENCE OF THE LATE SIR HUGH ALLAN.



S. Davis & Sons' celebrated and popular brands, Cable, Mungo, El Padre, and Madre é Nijo, are the Domestic Cigars sold at this hotel. It is unnecessary for us to make any comment on their superior quality they having gained First Prize Medals in competition with the world in the Paris and Centennial Expositions, and all Provincial Medals wherever exhibited, and are well known throughout the Dominion.



SIR
con
in havin
remains

Geo
enterpris
place, a
becomes
crowded
and oth
from the
and now
here as
mountain
the wide
lake.

Turn
are Gib
Orford.
its way
from the

SIR HUGH ALLAN, who was long considered the most progressive man in Canada, and the founder of the Dominion commerce by means of the fleet of ocean steamers bearing his name, as well as by the railways he succeeded in having built, made his summer home at Belmer, on the opposite side of the lake to Elephantis. The place yet remains the property of his family

Georgeville is the town of most considerable note between Newport and Magog, both as regards population and enterprise. It has long been a favorite summering place, and during the warm months every home becomes a boarding house and the village is crowded with city folk from Montreal, Quebec and other places. There is much to be seen from the hillslope on which the village is built, and nowhere are more superb sunset effects than here as the mellowed northern sun rolls over the mountains, and the rainbow hues are reflected in the wide expanse of the deep, clear water of the lake.

Turning to the north, the commanding features are Gibraltar Point, Lord's Island, and Mount Orford. Sargent's Bay, more to the west, pushes its way between high banks for three miles back from the lake.



LONG ISLAND, FROM CAPT. GULLY'S.

A perfect blend of Private Plantation
Java and Pure Arabian Mocha.



Always packed in two-pound, air-tight
tin cans. Never sold in bulk.

“SEAL BRAND” COFFEE.

*Packed only in Two-Pound Air-Tight
Tin Cans.*

IMPORTED AND CONTROLLED BY

CHASE & SANBORN,
MONTREAL AND BOSTON.

EE.

ight,

N,



BELMER.

W. H. WIGGETT,

MANUFACTURER OF

AERATED WATERS,

BOTTLER OF

FINE ALES AND PORTERS.

ALSO AGENT FOR

THE CELEBRATED ST. LEON WATER,

HOTELS, FAMILIES AND THE TRADE SUPPLIED.

SHERBROOKE, P. Q.

To T
gl

Belmer
up the
grande

The
Georgev
affordin
and en

Head.
Mills, a
Pond a

One
Townshi
and Ge
summer,
Landing
Waterloo

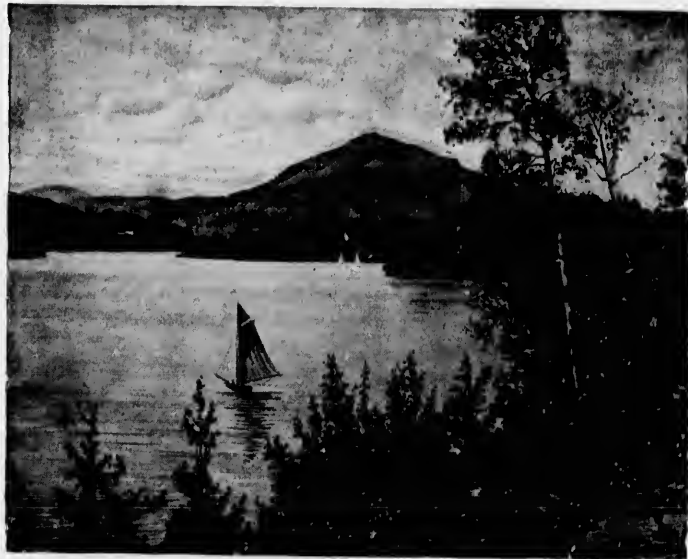
The
this stre
feet, but

TO THE WEST is Mount Elephants, and glancing more southerly our view reaches over Belmer and Molson's Point and Island, and on up the lake until stopped by the overshadowing grandeur of Owl's Head.

There are many interesting drives about Georgeville, that to the south along a high ridge affording fine views of the lake and mountains, and ends at Magoon's Point, opposite Owl's Head. Other roads lead to Magog, to Smith's Mills, and Stanstead, also to Fitch Bay, Lovering Pond and Lake Massawippi.

One of the thoroughfares of the Eastern Township was for many years through Stanstead and Georgeville, across the lake by boat in summer, and on ice in winter, to Knowlton Landing, and thence through Bolton Pass to Waterloo and Montreal.

The average depth of water in the lake across this stretch of three miles is fully three hundred feet, but the sounding line, to reach bottom at the deeper parts must be more than sixteen hundred feet in length



OWL'S HEAD, FROM GIBRALTAR POINT.

C. W. COOK & CO.

DEALERS IN ALL KINDS OF

Fresh and Salt Fish

IN THEIR SEASON.

COD, HADDOCK, SMELTS, HALIBUT,
SWORDFISH MACKEREL, LAKE
AND BROOK TROUT, TOMMY
CODS AND PICKEREL.

Fresh Stock and Large Assortment of Fresh
and Canned Fruits and Vegetables.

NEWPORT, VERMONT.

G. D. PRATT,

PROPRIETOR OF

Memphremagog × Livery × Stable.

FIRST-CLASS TEAMS TO LET AT REASONABLE RATES.

HORSES BOARDED BY THE DAY OR WEEK.

Orders Left at Hotel Office will be Promptly
Attended to.

NEWPORT, VERMONT.

A Few Choice Vermont Horses always on hand for Sale.

NT,

x Stable.

ABLE RATES.

WEEK.

e Promptly

NT.

and for Sale.



BOLTON PASS.

WILLIAM EVANS,

Seedsman to the Council of Agriculture for the Province of Quebec,

IMPORTER AND GROWER OF

Field, Garden & Flower Seeds

SEED, WHEAT, BARLEY, OATS, PEAS, BEANS, RYE,
TARES, CLOVER AND TIMOTHY SEED.

WAREHOUSES: Nos. 89, 91 & 93 MCGILL ST.,

Nos. 104, 106 & 108 FOUNDLING ST., and over St. Ann's Market,

MONTREAL.

Nurseries and Seed Farm: Broadlands, Cote St. Paul.

FRUIT AND ORNAMENTAL TREES, SHRUBS, ROSES, GREEN-HOUSE AND
BEDDING PLANTS, VEGETABLE PLANTS, SMALL FRUITS, &c.

H. S. GREEN,

DEALER IN

Fine Gold and Silver Watches

OF THE BEST AMERICAN AND FOREIGN MANUFACTURE,

Clocks, Jewelry and Silverware,

SPECTACLES ^{AND} EYE-GLASSES in great variety.

A FINE LINE OF

Fishing Tackle, Guns, Revolvers, Cartridges,
and other Sporting Goods.

CONFECTIONERY.

A nice line of the best make constantly on hand, fresh and inviting.

CHOICE PERFUMES AND TOILET ARTICLES.

Pocket Outlery, Scissors and Shears, first-class warranted goods.

CIGARS AND FINE TOBACCOS.

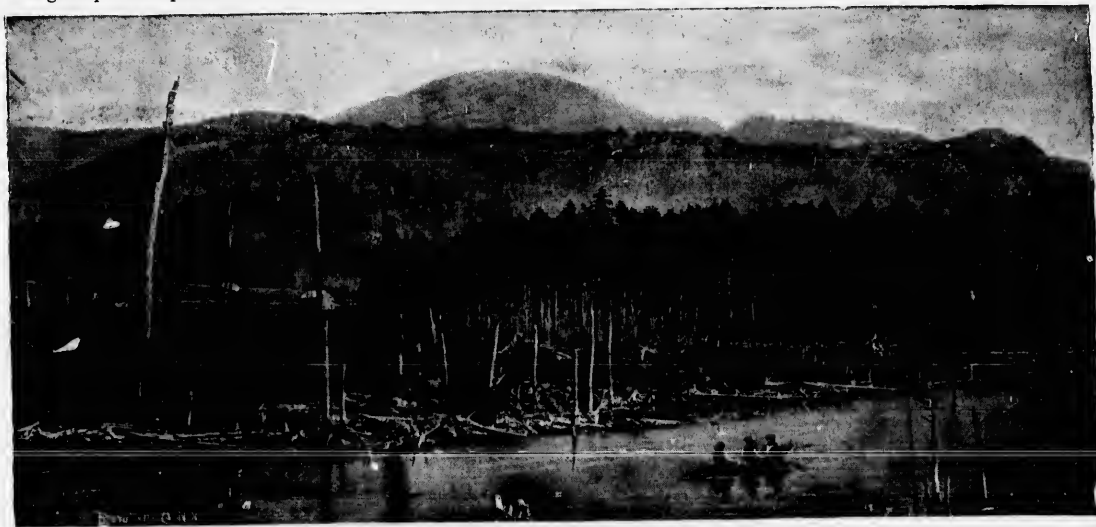
A specialty made of fine watch and jewelry repairing. All work done promptly and in the best manner.

Store in West Corner of Memphremagog House,

NEWPORT, VT.

r,
atches
FACTURE,
re,
at variety.
ridges,
and inviting.
ES.
anted goods.
done promptly
House,

GIBRALTAR POINT is the commanding promontory of table-land flanked by the lake on the east and by Sargent's Bay on the south-west. A company of Montreal capitalists undertook to make it a fashionable resort, and built a large hotel and many cottages upon the plateau, but before they were completed disaster came and the property has since remained in *statu quo*.



MOUNT ORFORD.
(67)

THE
G
down

Lake M
compar
thousan

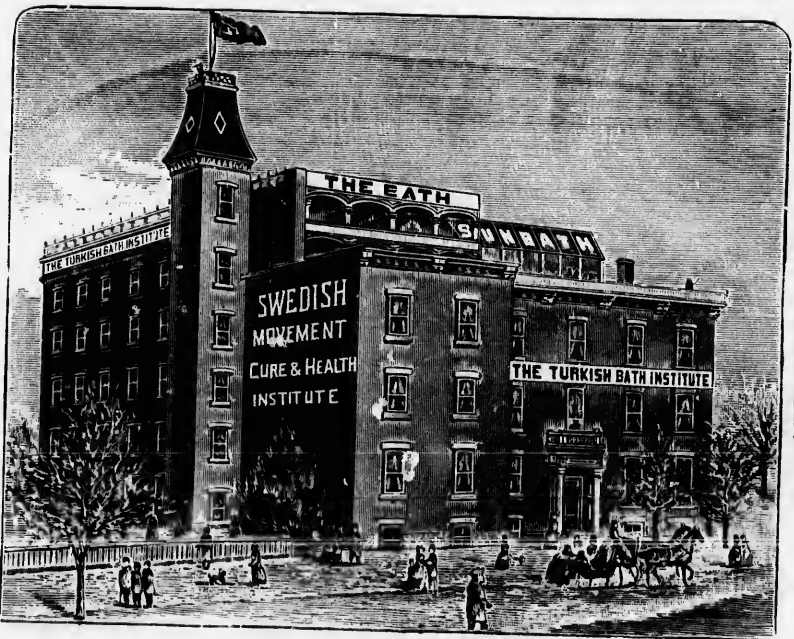
The Modern Turkish or Roman Bath

AND HOME OF HEALTH,

No. 140 ST. MONIQUE STREET,

FOOT OF MCGILL COLLEGE AVENUE,

MONTREAL.



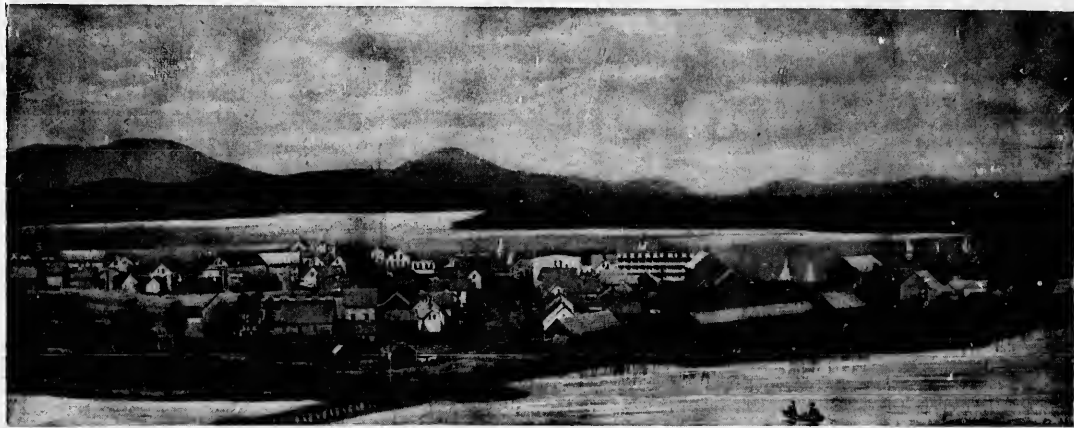
FOR THE TREATMENT AND CURE OF

Rheumatism in all its forms—chronic and acute—Severe Colds, Coughs, Bronchial Troubles and Catarrh, the early stages of Consumption, Liver and Kidney Derangements, Dropsy, Neuralgia, Dyspepsia, Constipation, &c., diseases connected with the circulation, all impurities of the blood and many other conditions.

MAY 1st, 1889.

D. B. A. MACBEAN, M. D., PROPRIETOR.

THE dividing lines of four important towns, viz. Bolton, Potton, Stanstead, and Magog, meet upon this point. Past Gibraltar the lake turns slightly to the east, and Lords Island, the last of much importance, is about three miles down the lake and awaits a purchaser to improve and build upon it. We must here caution the reader that with



NEWPORT, VT.

Lake Memphremagog, north is down and south is up. The remaining six or seven miles of the lake become tame in comparison to that already described, but a few miles beyond Magog, Mount Orford rears his solemn head three thousand three hundred feet above the lake and is the highest land in the Province of Quebec.



All the Illustrations in this book were made by the

PHOTO-TYPE COMPANY,

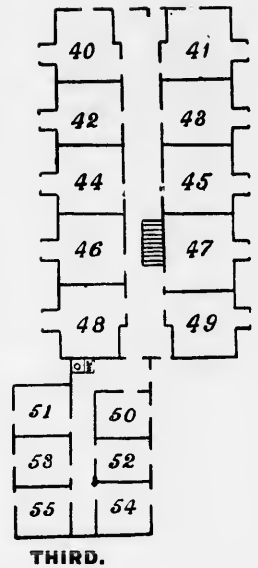
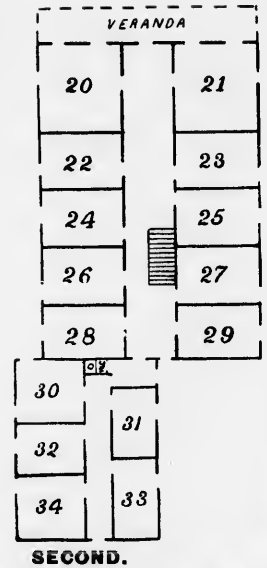
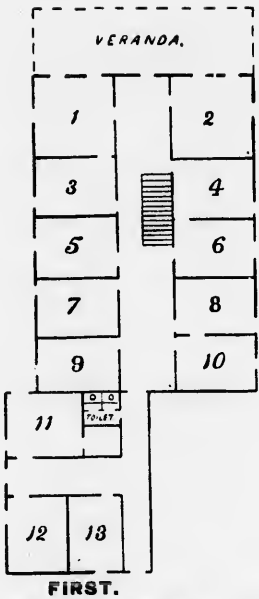
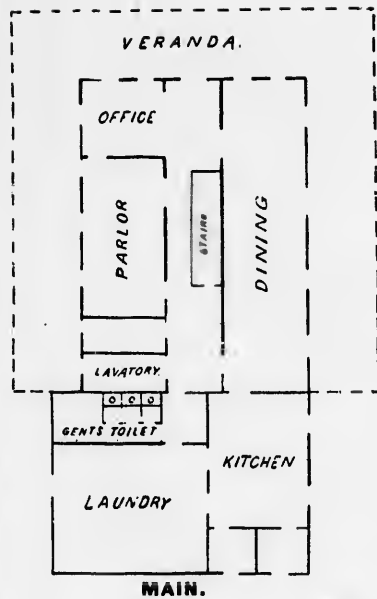
No. 76 BEEKMAN STREET,

New York.

#



Relief and Intaglio Plates direct from Photographs, Paintings, Drawings, etc., by Oesterreicher's New Process.



PLAN OF FLOORS
Of Owl's Head Mountain House.



D. McManamy & Co.,

Importers and Dealers in

Foreign and Domestic


Wines and Liquors,

(Wholesale Only.)

Sherbrooke, P. Q.



HOW TO REACH OWL'S HEAD.



FROM NEW YORK the direct route is via the Connecticut River Line (Grand Central Depot), which, from New Haven, follows the notably beautiful valley of the Connecticut, until at St. Johnsbury, Vt. (the junction with the Portland and Ogdensburg, also the St. Johnsbury and Lake Champlain railways) the river bends to the east but the railway continues about due north to Newport, Vt., on Lake Memphremagog. Time about twelve hours. Monarch sleepers are attached to afternoon and drawing-room cars to morning trains.

From Boston the way is over the Lowell system of the Boston and Maine R.R. direct to Newport, Vt., and is through a charming and interesting country. The luxurious sleepers of the Canadian Pacific Railway are attached to evening trains, others have drawing-room cars.

From Portland—The Portland and Ogdensburg R.R. passes close to Sebago Lake and through the White Mountains to St. Johnsbury, where connections are made with the B. & M. R. R. to Newport, Vt.

From Montreal the Canadian Pacific Railway has two lines, the main route to Magog at the northern, and a branch to Newport at the southern end of the lake.

From Quebec and Lake St. John the way is over the Quebec Central Railway to Newport or Magog.

Two passenger steamers, the *Lady of the Lake* and the *Mountain Maid*, each make two daily trips up and down the lake to the Mountain House.

For all other particulars and terms, address

Owl's Head Mountain House,

NEWPORT, VERMONT.

