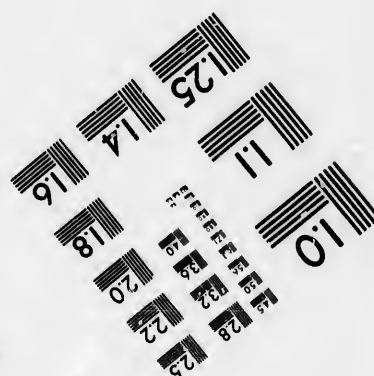
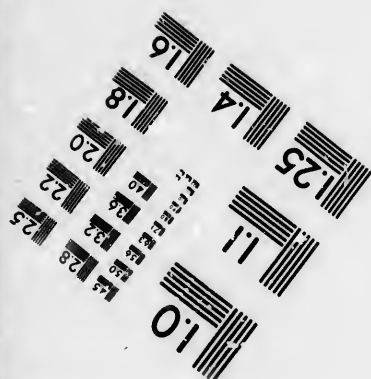
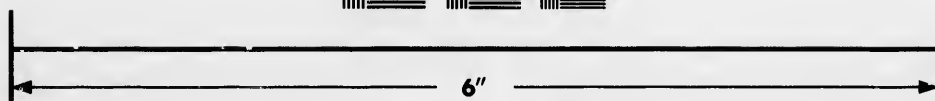
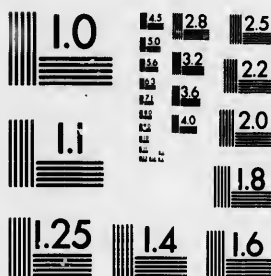


IMAGE EVALUATION TEST TARGET (MT-3)



Photographic
Sciences
Corporation

23 WEST MAIN STREET
WEBSTER, N.Y. 14580
(716) 872-4503

**CIHM/ICMH
Microfiche
Series.**

**CIHM/ICMH
Collection de
microfiches.**



Canadian Institute for Historical Microreproductions / Institut canadien de microreproductions historiques

© 1986

Technical and Bibliographic Notes/Notes techniques et bibliographiques

The Institute has attempted to obtain the best original copy available for filming. Features of this copy which may be bibliographically unique, which may alter any of the images in the reproduction, or which may significantly change the usual method of filming, are checked below.

- ☐ Coloured covers/
Couverture de couleur
- ☐ Covers damaged/
Couverture endommagée
- ☐ Covers restored and/or laminated/
Couverture restaurée et/ou pelliculée
- ☐ Cover title missing/
Le titre de couverture manque
- ☐ Coloured maps/
Cartes géographiques en couleur
- ☐ Coloured ink (i.e. other than blue or black)/
Encre de couleur (i.e. autre que bleue ou noire)
- ☐ Coloured plates and/or illustrations/
Planches et/ou illustrations en couleur
- ☐ Bound with other material/
Relié avec d'autres documents
- ☐ Tight binding may cause shadows or distortion along interior margin/
La reliure serrée peut causer de l'ombre ou de la distorsion le long de la marge intérieure
- ☐ Blank leaves added during restoration may appear within the text. Whenever possible, these have been omitted from filming/
Il se peut que certaines pages blanches ajoutées lors d'une restauration apparaissent dans le texte, mais, lorsque cela était possible, ces pages n'ont pas été filmées.

- ☒ Additional comments: [Printed ephemera] 1 sheet (verso blank)
Commentaires supplémentaires:

L'Institut a microfilmé le meilleur exemplaire qu'il lui a été possible de se procurer. Les détails de cet exemplaire qui sont peut-être uniques du point de vue bibliographique, qui peuvent modifier une image reproduite, ou qui peuvent exiger une modification dans la méthode normale de filmage sont indiqués ci-dessous.

- ☐ Coloured pages/
Pages de couleur
- ☐ Pages damaged/
Pages endommagées
- ☐ Pages restored and/or laminated/
Pages restaurées et/ou pelliculées
- ☒ Pages discoloured, stained or foxed/
Pages décolorées, tachetées ou piquées
- ☐ Pages detached/
Pages détachées
- ☒ Showthrough/
Transparence
- ☐ Quality of print varies/
Qualité inégale de l'impression
- ☐ Includes supplementary material/
Comprend du matériel supplémentaire
- ☐ Only edition available/
Seule édition disponible
- ☐ Pages wholly or partially obscured by errata slips, tissues, etc., have been refilmed to ensure the best possible image/
Les pages totalement ou partiellement obscurcies par un feuillet d'errata, une pelure, etc., ont été filmées à nouveau de façon à obtenir la meilleure image possible.

This item is filmed at the reduction ratio checked below/
Ce document est filmé au taux de réduction indiqué ci-dessous.

10X	12X	14X	16X	18X	20X	22X	24X	26X	28X	30X	32X
						<input checked="" type="checkbox"/>					

The copy filmed here has been reproduced thanks to the generosity of:

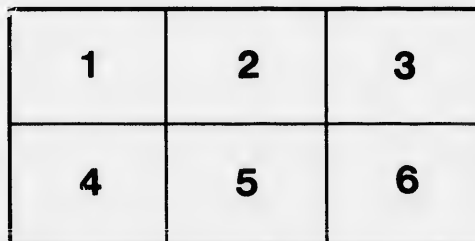
Douglas Library
Queen's University

The images appearing here are the best quality possible considering the condition and legibility of the original copy and in keeping with the filming contract specifications.

Original copies in printed paper covers are filmed beginning with the front cover and ending on the last page with a printed or illustrated impression, or the back cover when appropriate. All other original copies are filmed beginning on the first page with a printed or illustrated impression, and ending on the last page with a printed or illustrated impression.

The last recorded frame on each microfiche shall contain the symbol → (meaning "CONTINUED"), or the symbol ▼ (meaning "END"), whichever applies.

Maps, plates, charts, etc., may be filmed at different reduction ratios. Those too large to be entirely included in one exposure are filmed beginning in the upper left hand corner, left to right and top to bottom, as many frames as required. The following diagrams illustrate the method:



L'exemplaire filmé fut reproduit grâce à la générosité de:

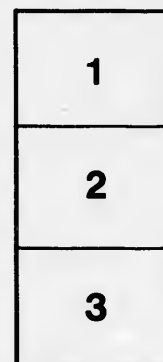
Douglas Library
Queen's University

Les images suivantes ont été reproduites avec le plus grand soin, compte tenu de la condition et de la netteté de l'exemplaire filmé, et en conformité avec les conditions du contrat de filmage.

Les exemplaires originaux dont la couverture en papier est imprimée sont filmés en commençant par le premier plat et en terminant soit par la dernière page qui comporte une empreinte d'impression ou d'illustration, soit par le second plat, selon le cas. Tous les autres exemplaires originaux sont filmés en commençant par la première page qui comporte une empreinte d'impression ou d'illustration et en terminant par la dernière page qui comporte une telle empreinte.

Un des symboles suivants apparaîtra sur la dernière image de chaque microfiche, selon le cas: le symbole → signifie "A SUIVRE", le symbole ▼ signifie "FIN".

Les cartes, planches, tableaux, etc., peuvent être filmés à des taux de réduction différents. Lorsque le document est trop grand pour être reproduit en un seul cliché, il est filmé à partir de l'angle supérieur gauche, de gauche à droite, et de haut en bas, en prenant le nombre d'images nécessaire. Les diagrammes suivants illustrent la méthode.





SALMON AND SEA-TROUT

OF
LOWER CANADA

The following List includes the principal SALMON RIVERS and SEA-TROUT STREAMS on the northeast or Labrador coast, between the Province boundary eastwards (Blanc Sablon), and the south or eastern shore of the Saint Lawrence, and others flowing easterly into the Bay of Fundy and so mentioned in the accompanying advertisement.

In addition there are many other bay, cove and inlet stations along these extensive Salmon and Trout.

The immediate expiry of the Lease of that vast Territory commonly known as "The Fisheries (such as Tadousac, Seven Islands, &c.), besides many famous SALMON RIVERS and ESTABLISHMENTS long occupied as FUR TRADING POSTS, by the Honourable Hudson's Bay Co.

LOCALITY.	NAMES OF RIVERS.	REMARKS.
ST. PAULS.	The River ESQUIMAUX.....	Fine Salmon river. Formerly yielding 52,500 Salmon each season.
	" CORKEWETPEECHE.....	Neighbouring stream. Contains steady run of Salmon.
	" STE. AUGUSTINE.....	Well supplied with Salmon.
	" SHEEP BAY.....	Considerable size. Good Salmon-fishery station.
	" LITTLE MECCATINA.....	Discharges large body of water by several channels. Fine Salmon river.
	" NETAGAMU.....	Large, deep stream. High Falls inside. Swarms of trout. Salmon only to the Falls.
	" NAPETETEPE.....	Empties into spacious bay. Abounds with Salmon.
	" ETAMAMU.....	Celebrated for its Salmon-fishery.
	" COACOACHO.....	Discharges into fine basin. Good Salmon river.
	" ROMAINE.....	Large, but shoal stream. Salmon abound. Is remarkable for a rare and flavorful quality of white or silver Trout.
	" MUSQUARRO.....	Bold, rapid river. Affords fine Salmon fishing with fly. Good station.
	" KEGASHKA.....	Salmon abundant—steep rapids impeding their ascent. Fishery in bay.
	" GT. NATASHQUAN.....	Famous stream. Salmon of finest kind and numerous.
	" AGWANISH.....	Large stream. Good Salmon fishery location. (N. E. bound of Mingan").
	" PASHASHEEBOO.....	Tolerable size. Fair fishery.
	" MINGAN.....	Excellent net and fly fishing for Salmon. Pools always hold a heavy run.
	" MANITOU.....	Branch of the Mingan, equally good and well known.
	" SAINT JOHN.....	Very large stream. Splendid Salmon fishery.
	" MAGPIE.....	Tolerably good fishery for Salmon. Rapid little river.
	" SAW BILL.....	Considerable stream. Chiefly net fishery.
	" MANITOU.....	Large—obstructed by perpendicular fall. At its mouth both Salmon and Trout resort.
	" MOISIC.....	Noted for numbers of weighty Salmon. Extensive and lucrative net-fly-fishing.
	" STE. MARGEURITE, (en bas).....	Excellent river for Salmon and Trout.

Seigniory Mingan.

to River St. Lawrence.

SAW BILL..... Considerable stream. Chiefly net fishery.



SEA-TROUT FISHERIES

OF
CANADA.

SEA-TROUT STREAMS which discharge into the Saint Lawrence and Saguenay Rivers, along the
Is (Blanc Sablon), and the River Jacques Cartier, above Quebec; also those emptying upon
easterly into the Bay of Chaleurs,—emphasising the Crown Rivers now open to public sale,

along these extensive coasts, but which are disposable chiefly as sedentary NET-FISHERIES for

only known as “The King’s Posts,” opens up to public competition numerous valuable COAST
RIVERS and SEA-TROUT STREAMS, and renders disposable certain COMMODIOUS BUILDING
Hudson’s Bay Company, at the mouths of the most important of these fine Rivers.

MARKS.

g 52,500 Salmon each season.
ly run of Salmon.
very station.
veral channels. Fine Salmon river.
le. Swarms of trout. Salmon ascending it
with Salmon.
mon river.
ound. Is remarkable for a rare, beautiful,
or silver Trout.
salmon fishing with fly. Good net-fishery
ding their ascent. Fishery in bay.
nd and numerous.
y location. (N. E. bound of “Lordship of
n. Pools always hold a heavy run of large fish,
and well known.
a fishery.
Rapid little river.
ery.
fall. At its mouth both Salmon and Trout
n. Extensive and lucrative net-fishery. Fine

ADDENDA.

Nearly all of the Rivers described in the foregoing Schedule are tidal streams, and most of them
have stationary Salmon and Trout fisheries within the embouchure, and at bays, coves and inlets on
either sides. Those upon the north shore of the St. Lawrence descend out of wild, rocky and moun-
tainous country.

Most of these streams, with their numerous tributaries, and the large lakes at the head of each
branch, present every variety of River and Lake suited to the breeding and feeding of fish.

Where there are mill-dams it is specially so noted. None elsewhere.

The names of certain Rivers at present advertised for sale are printed in italics.

The True Salmon (*Salmo Salar*), and the Tide Trout (*Salmo Trutta Marina*), are herein mentioned.

The Grand Trunk Railway, now in operation to St. Thomas, will be opened next autumn to River
du Loup, 110 miles below Quebec. Passenger steamboats ply between Quebec and the Saguenay.

Synopsis of the Laws and By-laws

NOW IN FORCE IN LOWER CANADA, HAVING ESPECIAL REFERENCE TO THE PRESER-
VATION AND REGULATION OF

SALMON AND TROUT FISHERIES.

Act 22nd Vic., cap. 86.

Section 4. The Governor in Council to grant special Fishing Leases and Licences: and make all need-

SALMON AND TROUT FISHERIES.

North Shore.

Discharge into River St. Lawrence.

Into Saguenay.

Into River St. Lawrence.

South Coast.

Flow into B. Chaleurs.

" SAW BILL.....	Considerable stream. Chiefly net fishery.
" MANITOU.....	Large—obstructed by perpendicular fall. At its mouth both Salmon resort.
" MOISIC.....	Noted for numbers of weighty Salmon. Extensive and lucrative net-fishing.
" STE. MARGEURITE, (en bas).....	Excellent river for Salmon and Trout.
" PENTECOST.....	Full, swift stream, much frequented by Salmon. Stationary fisheries.
" TRINITY (BAY).....	Favorite river. Salmon and Trout fishing, for net and rod.
" GOODROUT.....	Fine Salmon river, widely known as such. The net-fishery in its tide-adjacent bay is very productive.
" ENGLISH.....	Empties into deep cove. Salmon fishery. Plenty of Trout.
" BERSIMIS.....	Immense stream, and has many tributaries. Scenery interesting. A large sized Salmon. They do not affect the fly except on the branches.
" NIPMEWECAW'NAN.....	Tributary of Bersimuis. Fairy like stream. Falls 9 miles inside. Exquisite.
" JEREMIE.....	Small. Trout only. Fur trading post, chiefly.
" COLOMBIER.....	Good Salmon fishery.
" PLOVER.....	Do.
" BLANCHE.....	Do.
" LAVAL.....	Picturesque and wild river, alternating with gentle rapids and deep runs. Besides valuable net-fishery, it affords abundant Salmon and Trout.
" SAUT DE COCHON.....	Steep falls hinder ascent of Salmon. Famous for Trout fishing along border.
" PORTNEUF.....	Pleasant stream to fish with fly. Up to the first falls swarms with several miles higher up is frequented by Salmon. Net-fishery the tide-way.
" GRAND ESCOUMAIN.....	Once famous for Salmon. Mill-dam has now an artificial fishway. Fine for Salmon in bay.
" G. BERGERONNE.....	Good Trout stream.
" L. BERGERONNE.....	Fair Salmon and Trout river. (Both the Bergeronne Rivers are within of Saguenay and Tadoussac.)
" ST. MARGARET, (en haut).....	Large tributary of river Saguenay. Fine Salmon fishing for both net Trout abundant.
" L. SAGUENAY.....	Considerable stream, affording tolerable rod and good net-fishing. side, not in use.
" ST. JOHNS, (en haut).....	Do.
" BLACK, OR SALMON.....	Formerly good fishery.
" MURRAY.....	Flows down beautiful valley. Yields Salmon.
" DU GOUFFRE.....	Much deteriorated.
" STE. ANNE.....	Pretty river, and lately has afforded fair Salmon fishing just below
" MONTMORENCI.....	Cataract at mouth. The upper water swarms with (river) Trout.
" JACQUES CARTIER.....	Excellent Salmon stream.
" DU SUD.....	Promises to become again a good Salmon river. Mill-dam and fishway.
" QUELLE.....	Well stocked with Salmon. Mill-dam broken up.
" G. MITIS.....	Large stream. Has dam.
" MATANNE.....	Fine Salmon river. Dam, and Salmon pass in course of erection.
" ST. ANN.....	Formerly good. Now few Salmon taken. Mill-dam across.
" MOUNT LOUIS.....	Important stream. More noted of recent seasons for sea Trout than
" MAGDELAINE.....	Salmon river, clear.
" DARTMOUTH.....	First class stream, flowing into Gaspé basin. Abounds with Salmon.
" YORK.....	Do. do. do.
" ST. JOHNS, (du sud).....	Do. do. do.
" GRAND.....	Fine Salmon fishery. Mill above.
" G. PABOS.....	Salmon fishery. Superior station.
" G. BONAVENTURE.....	Large and valuable stream. Many tributaries. Abounding with Salmon.
" CASCAPIEDIACS.....	Both the little and great Cascapiediacs yield high numbers of Salmon.
" NOUVELLE.....	Good Salmon fishery in bay.
" MATAPEDIAC.....	Considerable magnitude, and abounds with Salmon.
" RESTIGOUCHE.....	Noble river. Has fine tributary streams. Salmon frequent it in large and of heavy weight. Head of Bay Chaleurs.
" MATAPEDIAC.....	Branch of Restigouche. Salmon ascend it about 40 miles.
" MISTOUCHE.....	Feeder of Restigouche. Salmon river.

SALMON AND TROUT FISHERIES.

Act 22nd Vic., cap. 86.

SECTION 4. The Governor in Council to grant special Fishing Leases and Licences; and make all need-
ful or expedient regulations for management and disposal of Fisheries.

- " 5. A General Superintendent and Local Overseers to be appointed, and paid by the Govern-
ment, for each Province.
- " 8. The Government may set apart any waters for natural or artificial propagation of Salmon
and Trout.
- " 24. The open season for Salmon fishery limited betwixt 1st March and 1st August. Fly surface
fishing extended to 1st September. Exception in procuring spawn for scientific purposes.
- " 25. Spawning pools of Salmon protected against all fishing.
- " 26. Nets and fishing apparatus shall not obstruct the main channel or course of any river; and
such channel or course shall be at least one-third of the whole breadth of a river.
- " 27. Owners of dams must attach fishways thereto.
- " 28. All parties concerned in breach of 24th Section, become liable to fine or imprisonment.
- " 29. The meshes of Salmon nets must measure five inches in extension from knot to knot.
- " 31. Trout fishing illegal between 20th October and 1st February.
- " 33. Netting for Trout in any Lake or Stream prohibited, except upon the River St. Lawrence.
- " 36. Purchase, sale, or possession, during prohibited seasons, of any Salmon or Trout, made a
punishable offence.

REGULATIONS UNDER ORDER IN COUNCIL.

BY-LAW A.—Parties forbidden to occupy Salmon or Sea-Trout fishery stations without Lease or License
from the Crown.

- " B.—The use of nets confined to the brackish waters within the estuary tide-way; and forbid-
den upon the fresh water stream above confluence of tide.
- " C.—All nets, &c., to be set no less than 200 yards apart.
- " E.—No other fishing whatever allowed over limits covered by exclusive Leases or Licenses
from the Crown, except by express consent of lessees or licentiates.
- " F.—Prohibits capture of Salmon or Sea-Trout by torchlight, and withleister or spear.
- " H.—The receipt, gift, purchase, sale and possession of speared Salmon or Trout declared
illegal.
- " J.—No mill rubbish to be drifted awast in any Salmon or Sea-Trout river.

Appropriate penalties of fine or imprisonment, with forfeiture of materials and fish,
are provided by law for the contravention of the several preceding Sections and By-Laws.

Also, effective and summary modes of proceeding are laid down for recovery of the
same.

CROWN LANDS DEPARTMENT, }
(FISHERIES,)
TORONTO, DECEMBER, 1858.

1858
1

ry.
Fall. At its mouth bath Salmon and Trout

Extensive and lucrative net-fishery. Fine

y Salmon. Stationary fisheries at the month.
hing, for net and rod.

ueh. The net-fishery in its tide-water and

ry. Plenty of Trout.

aries. Scenery interesting. Abounds with
not affect the fly except on the waters of its

m. Falls 9 miles inside. Exquisite fly-fishing.
t, chiefly.

g with gentle rapids and deep narrow pools.
affords abundant Salmon and Trout fishing.
Famous for Trout fishing along the estuary

to the first falls swarms with Trout. For
ented by Salmon. Net-fishery station along

as now an artificial fishway. Fine net-fishery

in the Bergeronne Rivers are within few miles

Fine Salmon fishing for both net and fly.—

ole rod and good net-fishing. Mill-dam in-

Salmon.

l fair Salmon fishing just below the chute.
swarms with (river) Trout.

mon river. Mill-dam and fishway.
n broken up.

n pass in course of erection.

ken. Mill-dam across.

recent seasons for sea Trout than Salmon.

basin. Abounds with Salmon.

do.

do.

tributaries. Abounding with Salmon.
s yield high numbers of Salmon.

s with Salmon.

ceans. Salmon frequent it in large numbers,
of Bay Chaleurs.

end it about 40 miles.

er.

