

Technical and Bibliographic Notes / Notes techniques et bibliographiques

The Institute has attempted to obtain the best original copy available for filming. Features of this copy which may be bibliographically unique, which may alter any of the images in the reproduction, or which may significantly change the usual method of filming, are checked below.

- Coloured covers/  
Couverture de couleur
- Covers damaged/  
Couverture endommagée
- Covers restored and/or laminated/  
Couverture restaurée et/ou pelliculée
- Cover title missing/  
Le titre de couverture manque
- Coloured maps/  
Cartes géographiques en couleur
- Coloured ink (i.e. other than blue or black)/  
Encre de couleur (i.e. autre que bleue ou noire)
- Coloured plates and/or illustrations/  
Planches et/ou illustrations en couleur
- Bound with other material/  
Relié avec d'autres documents
- Tight binding may cause shadows or distortion along interior margin/  
La reliure serrée peut causer de l'ombre ou de la distorsion le long de la marge intérieure
- Blank leaves added during restoration may appear within the text. Whenever possible, these have been omitted from filming/  
Il se peut que certaines pages blanches ajoutées lors d'une restauration apparaissent dans le texte, mais, lorsque cela était possible, ces pages n'ont pas été filmées.

Additional comments: /  
Commentaires supplémentaires:

L'Institut a microfilmé le meilleur exemplaire qu'il lui a été possible de se procurer. Les détails de cet exemplaire qui sont peut-être uniques du point de vue bibliographique, qui peuvent modifier une image reproduite, ou qui peuvent exiger une modification dans la méthode normale de filmage sont indiqués ci-dessous.

- Coloured pages/  
Pages de couleur
  - Pages damaged/  
Pages endommagées
  - Pages restored and/or laminated/  
Pages restaurées et/ou pelliculées
  - Pages discoloured, stained or foxed/  
Pages décolorées, tachetées ou piquées
  - Pages detached/  
Pages détachées
  - Showthrough/  
Transparence
  - Quality of print varies/  
Qualité inégale de l'impression
  - Continuous pagination/  
Pagination continue
  - Includes index(es)/  
Comprend un (des) index
- Title on header taken from: /  
Le titre de l'en-tête provient:
- Title page of issue/  
Page de titre de la livraison
  - Caption of issue/  
Titre de départ de la livraison
  - Masthead/  
Générique (périodiques) de la livraison

This item is filmed at the reduction ratio checked below /  
Ce document est filmé au taux de réduction indiqué ci-dessous.

10X	14X	18X	22X	26X	30X
<input type="checkbox"/>	<input type="checkbox"/>	<input type="checkbox"/>	<input type="checkbox"/>	<input checked="" type="checkbox"/>	<input type="checkbox"/>
12X	16X	20X	24X	28X	32X

# MERCHANTS' BANK OF CANADA

Capital ..... \$5,799,200  
 Rest ..... 1,920,000

HEAD OFFICE, - - MONTREAL.

ANDREW ALLAN, of the Allan Line of Steamships, PRESIDENT.  
 GEORGE HAQUE, General Manager.

BRANCHES IN MANITOBA: WINNIPEG, AND BRANDON.  
 D. MILLER, Manager at Winnipeg.

BRANCHES IN ONTARIO AND QUEBEC.

Bellefleur	Ingersoll	Ottawa	Stratford
Berlin	Kinross	Owen Sound	St. John's, Que.
Brampton	Kinross	Perth	St. Thomas
Chatham	London	Prescott	Toronto
Collingwood	Montreal	Quebec	Walkerton
Casamiquette	Mitchell	Sherbrooke	Que.
Castillon	Napanee		

BANKERS IN GREAT BRITAIN—London, Glasgow, Edinburgh, and other points. The Clydesdale Bank (Limited). Liverpool, Commercial Bank of Liverpool.  
 A general banking business transacted. Letters of Credit issued, available in China, Japan and other foreign countries.

INTEREST ALLOWED ON DEPOSITS.

# BANK OF BRITISH NORTH AMERICA.

INCORPORATED BY ROYAL CHARTER.

Paid-up Capital ..... £1,000,000 Stg.  
 Reserve Fund ..... £250,000 "

LONDON OFFICE—3 Clements Lane, Lombard Street, E.C.

COURT OF DIRECTORS—J. H. Brodie, H. J. E. Kendall, John James Cater, J. J. Kingsford, Henry B. Farrer, Frederic Lubbock, Richard H. Glyn, Geo. D. Whitman, E. A. Hoare, J. Murray Robertson.  
 A. G. WALLIS—Secretary.

Head Office in Canada—St. James St., Montreal.  
 R. B. Urindley, General Manager. F. Stanger, Inspector.

Branches and Agencies in Canada—London, Kingston, Fredericton, N.B., Brandon, Ottawa, Halifax, N.S., Paris, Montreal, Victoria, B.C., Hamilton, Quebec, Vancouver, B.C., Toronto, St. John, N.B., Winnipeg, Brandon, Man.

H. M. MENNISON, MANAGER, MAIN STREET, WINNIPEG.

Agents in the United States—New York—D. A. McTavish and H. Stikeman, Agts. San Francisco—W. Lawson and J. C. Welsh, Agts. London Bankers—The Bank of England—Messrs. Glyn & Co., Foreign Agents—Liverpool, Bank of Liverpool. Australia, Union Bank of Australia. New Zealand, Union Bank of Australia. India, China and Japan—Chartered Mercantile Bank of India. London and China, Agra Bank (Limited). West Indies, Colonial Bank Paris, Messrs. Marcuard, Krauss & Co. Lyons, Credit Lyonnais.

# IMPERIAL BANK OF CANADA.

CAPITAL (paid up) ..... \$1,500,000.00  
 REST ..... \$600,000.00

H. B. HOWLAND, President. T. R. MERRITT, Vice-President  
 HEAD OFFICE, TORONTO.—D. R. WILKIN, Cashier.

BRANCHES IN THE NORTHWEST.

Winnipeg, ..... C. S. Hoare, Manager  
 Brandon, ..... A. Jukes, "  
 Calgary ..... S. Barber, "  
 Portage la Prairie ..... N. G. Leslie, "

BRANCHES IN ONTARIO

Essex Centre, Niagara Falls, Ingersoll, St. Thomas  
 Fort Erie, Port Colborne, Yonge St. Welland,  
 Galt, St. Catharines, Toronto, Woodstock.

Deposits received and interest allowed at current rates.  
 Drafts and letters of credit issued available in Canada, Great Britain, United States, France, China, India, Australia and New Zealand.

Municipal and other debentures purchased.  
 Agents in Great Britain—Lloyds Bankers & Bowanquh's Bank (Limited), 72 Lombard Street, London, England.  
 Correspondents—London & Southwestern Bank, Manchester & Liverpool District Banking Co. (Limited). E. W. Yates & Co., Liverpool.

# Bank of Ottawa.

HEAD OFFICE, OTTAWA.

Capital paid up ..... \$1,000,000  
 Rest ..... \$300,000

DIRECTORS:

James MacLaren, Esq., President. Chas. Magee, Esq., Vice-President.  
 C. T. Bate, Esq., J. H. Mather, Esq.  
 Alex. Fraser, Esq., Hon. Geo. Bryson, Hon. L. F. Church,  
 Robert Blackburn, Esq., George Hay, Esq.

GEORGE BURN, Esq., CASHIER.

BRANCHES:

Arnprior, Pembroke, Carleton Place and Keewatin, Ont.  
 Winnipeg, Manitoba.

AGENTS—Canada, Bank of Montreal; New York, Messrs. W. Watson and A. Lang; London, Eng., Alliance Bank; St. Paul, Merchants National Bank.

WINNIPEG BRANCH: 369 MAIN STREET:

We receive accounts of corporations' manufacturers, firms and individuals on favourable terms.  
 Interest allowed on deposits.  
 Buying and American exchange bought and sold.  
 Drafts issued on all the principal points in Canada.  
 Letters of Credit issued for use in Great Britain and elsewhere.  
 Collections promptly attended to.

F. H. MATHEWSON, MANAGER.

# ALLAN, BRYDGES & CO.

BANKERS AND BROKERS,

339 Main Street, Winnipeg, Man

Municipal, School and other  
 Debentures negotiated.

✂ PAPER BOUGHT AND SOLD. ✂

Branch Office—CARBERRY, Man.,  
 R. T. Rokby, Manager.

INTEREST ALLOWED ON DEPOSITS.

# McBEAN BROS.,

CITY HALL SQUARE,

WINNIPEG.

A. G. McBEAN, P.O. Box 1299 Montreal.

# Commission Merchants,

AND EXPORTERS OF

# GRAIN & PRODUCE.

# CIGARS!

Smoke the brands made by

# Bryan & Co

COLUMBUS, SELECTS & GONDOLEROS

No better value in the market. Made at our factory in

WINNIPEG, - MANITOBA.

Andrew Allan, President. John MacLaren, Superintendent.  
 F. E. Brydges, Vice-President. E. H. Williams, Sec.-Treas.

# THE VULCAN IRON COMPANY,

OF MANITOBA (LIMITED).

# BRASS & IRON FOUNDERS,

Light and Heavy Forgings, Engine and Boiler Works,  
 Millwrighting.

# GENERAL BLACKSMITHING.

All kinds of Machinery.

Point Douglas Av., WINNIPEG.

# Mitchell Drug Company

# WHOLESALE DRUGS,

17 Owen Street, - - WINNIPEG.

A Full Assortment of Drugs, Patent Medicines  
 and Sundries at Lowest Prices.

✂ CORRESPONDENCE SOLICITED. ✂

# Hodgson, Sumner & Co.

IMPORTERS OF

British, French, American and German

DRY GOODS,

# FANCY GOODS,

# Smallwares,

TOYS, BEADS, &c

WHOLESALE ONLY.

Cor. Bannatyne & Princess Sts., Winnipeg.

# RICHARD & CO,

Importers and Wholesale Dealers in

# Wines, Spirits and Cigars

365 MAIN STREET,

WINNIPEG.

# The Western Canada Loan & Savings Co.

CAPITAL, - - \$1,400,000.00.  
 RESERVE FUND, - - \$800,000.00.

HEAD OFFICES: Toronto, - - WALTER S. LEE, Managing Director  
 BRANCH OFFICES: Winnipeg, - - W. M. Fisher, Manager.

Monies advanced upon Farm and City Properties.  
 MORTGAGES, MUNICIPAL DEBENTURES & SCHOOL DEBENTURES purchased. Scrip held for use of Clients.  
 Clients title deeds are not sent out of the Province but are lodged in the Company's vaults at Winnipeg, where they may be examined at all times. Agents at all principal points throughout the Province.

For further information write to the Manager of the Winnipeg Branch.

NOTHING LIKE LEATHER.

# W. N. JOHNSTON & CO.,

Importers and Dealers in

# Leather, Findings, Plasterers' Hair

HIDES AND OIL.

23 and 25 Alexander St. West, Winnipeg.

# DAWSON, BOLE & CO.

REGINA, N.W.T.

# Wholesale Druggists

Dealers in Drugs, Patent Medicines,  
 Toilets, etc., etc.

We carry the largest line of CIGARS in the West.

WRITE FOR QUOTATIONS.

# TEES, WILSON & CO.

70 ST. PETER STREET, MONTREAL.

A FULL ASSORTMENT OF

INDIAN, CEYLON, CHINA AND JAPAN

# TEAS.

We make a specialty of CEYLON and INDIAN Teas, and carry the largest assortment of any House in the Dominion.

Represented in Manitoba, Northwest Territories and British Columbia, by

D. C. MCGREGOR, - MCINTYRE BLOCK, WINNIPEG.

# RUBLEE, RIDDELL & CO

# Commission Merchants

AND IMPORTERS OF

# Green and Dried Fruits.

15 OWEN STREET,

# WINNIPEG

**HENDERSON & BULL,**  
 WHOLESALE COMMISSION MERCHANTS.  
 Established 1832.  
 41 BANNATYNE STREET EAST, WINNIPEG.  
 AGENTS FOR  
 THE CANADA SUGAR REFINING Co. Ld. Montreal  
 Sugars and Syrup.  
 THE EDWARDSBORO STARCH Co., Ld. Montreal  
 Starch, Etc.  
 THE CANADA JUTE Co., Ld. Montreal  
 Bags, Jute and Cotton. Hessians, Twines.  
 (Millers and Grain Merchants supplied at lowest prices.)  
 LONGFORD LUMBER COMPANY, Orillia  
 Pails, Tubs and Woodenware.  
 SIMCOE CANNING COMPANY, Simcoo  
 Canned Goods.  
 CUDAHY BROS. Milwaukee  
 Lard, Pork and Smoked Meats.  
 PIONEER OATMEAL MILLS, - Portage la Prairie  
 Oatmeal, Pot and Pearl Barley.

AMES, HOLDEN & CO., MONTREAL.

**The Ames, Holden Company,**

WHOLESALE

Dealers in

**BOOTS & SHOES,**

33 Queen Street,

WINNIPEG.

JAMES REDMOND  
 WINNIPEG.

A. C. FLUMERPELT.  
 WINNIPEG.

**Thompson,**

**Codville & Co.,**

**WHOLESALE GROCERS,**

26 McDermott Street,

WINNIPEG.

JAS. PORTER

W. M. RONALD.

**PORTER & RONALD,**

DIRECT IMPORTERS OF

**GROCKERY**

**GLASSWARE**

**CHINA  
 LAMPS,**

**CHANDELIERS,**

**CUTLERY,**

**SILVER-PLATED WARE & FANCY GOODS**

330 MAIN ST., WINNIPEG

**GROCERS, ATTENTION!**

ASK FOR THE CELEBRATED

**"Reindeer Brand"**

**CONDENSED MILK,**

Condensed Coffee and Milk,  
 Condensed Cocoa and Milk.

THE BEST IN THE MARKET.

FOR SALE BY ALL WHOLESALE GROCERS.

—MANUFACTURED BY THE—

Truro Condensed Milk & Canning Co. Ld  
 TRURO.

HENDERSON & BULL, Agents,  
 WINNIPEG.

**MILLER, MORSE & Co**

WHOLESALE

Hardware,

Cutlery,

Ammunition,

Guns, etc.

Princess St., WINNIPEG.

**J. H. ASHDOWN,**

Wholesale Dealer & Importer of all kinds of

**Shelf and Heavy Hardware,**

STOVES AND TINWARE,

PAINTS, OILS AND GLASS,

**RAILROAD and MILL SUPPLIES,**

The Trade furnished with our Illustrated  
 Catalogue on application.

Corner Main and Bannatyne Streets.

**WINNIPEG.**

**Cornell, Spera & Co.,**

WHOLESALE IMPORTERS OF

**MEN'S FURNISHING GOODS,**

Smallwares, etc.

MANUFACTURERS OF

Overalls, White and Regatta Dress  
 Shirts, Flannel, Cotton & Tweed Shirts

Our stock for the coming season is replete with all the  
 Novelties. The inspection of buyers cordially invited.

CAMPBELL, SPERA & CO.,

27 PORTAGE AVENUE EAST,  
 WINNIPEG.

**H. A. Nelson & Sons**

TORONTO —AND— MONTREAL

DIRECT IMPORTERS AND  
 WHOLESALE DEALERS.

**Fancy Goods and Toys.**

ALL THE NEWEST NOVELTIES

FROM THE

European and American Markets.

Represented in Manitoba, Northwest Ter-  
 ritories and British Columbia, by  
 W. S. CRONE.

**FIRST ARRIVAL!**

**PRIME NEW VALENCIA RAISINS**

1,000 Boxes now in Store.

ALSO NEW CANNED GOODS.

New Season

*Japans, Congous  
 and Indian Teas.*

**LYON, MACKENZIE & POWIS,**

WHOLESALE GROCERS,

Cor. McDermot & Albert Sts., WINNIPEG

**Redwood Brewery**

Fine Ales, Extra Porter  
 and Premium Lager.

Most Extensive Establishment of  
 the kind in Western Canada.

**Edward Drewry,**

PROPRIETOR,

WINNIPEG, - MANITOBA.

Highest cash price paid for good  
 Malting Barley.

**Benny, Macpherson & Co.**

SHELF AND HEAVY

**HARDWARE,**

METALS, Etc.

388, 390 & 392 St. Paul St, MONTREAL

Represented in Manitoba and Northwest Territories by

**G. F. Stephens & Co.,**

MARKET ST. EAST, WINNIPEG.

To whom all enquiries should be addressed

# The Commercial

A Journal of Commerce, Industry and Finance, specially devoted to the interests of Western Canada, including that portion of Ontario west of Lake Superior, the Provinces of Manitoba and British Columbia and the Territories.

**Seventh Year of Publication.**  
**ISSUED EVERY MONDAY**  
**SUBSCRIPTION, \$2.00 PER ANNUM.**

## ADVERTISING RATES.

1 month Weekly Insertion	.....	\$0 30 per line.
3 months, do	.....	0 75 "
6 " do	.....	1 25 "
12 " do	.....	2 00 "

Transient advertisements, 10 cents per line each insertion.

Fine Book and Job Printing Departments.

Office, 4 and 6 James St. East,

JAMES E. STEKX.

Publisher.

The Commercial certainly enjoys a very much larger circulation among the business community of the country between Lake Superior and the Pacific Coast, than any other paper in Canada, daily or weekly. By a thorough system of personal solicitation, carried out annually, this journal has been placed upon the desk of the great majority of business men in the vast district designated above, and including northwestern Ontario, the provinces of Manitoba and British Columbia, and the territories of Assiniboia, Alberta and Saskatchewan. The Commercial also reaches the leading wholesale, commission, manufacturing and financial houses of Eastern Canada.

WINNIPEG, APRIL 15, 1889.

New departmental buildings will be erected at Regina this season, at a cost of \$12,000.

W. MOORE, livery, Oak Lake, Man., has sold out to Abraham Johnston, of Walkerton, Ont.

BARNES, boot and shoe dealer, Newdale, Man., has added a harness department to his business.

Mrs. SPARKLING, fruits and confectionery, Emerson, Man., is selling out and giving up business.

R. J. DICKENSON, late proprietor of the Queen's Hotel, Brandon, died last week from consumption.

A FIRE in J. A. McKercher's grocery store, Winnipeg, last week was put out with but slight damage.

THE Regina Journal, not to be outdone by the Leader, has issued a very good special immigration number.

A MR. STILLWELL, from Ontario, has bought out the premises of J. C. McLeod, blacksmith, Killarney, Man.

IMMIGRATION buildings to cost about \$15,000 and accommodate 100 to 150 persons, will be erected in Winnipeg at once.

LAKE Winnipeg Whitefish were quoted at 5 to 6c per pound at Toronto last week. B. C. Salmon were quoted at 12½ to 14c.

WM. MCKENZIE has opened a harness shop at Whitewood, Assa. Barbour is likely to open a blacksmith shop at the same place.

COAL at Calgary sells retail at \$8 per ton for Canmore, and \$7 per ton for Cochrane mine coal. Wood brings \$4 per cord, or \$30 per car in car lots of about 12 cords.

J. O. Cadham, tinware, Portage la Prairie and Carberry, Man., has disposed of his Carberry branch to H. W. Brown & Co.

THE Rat Portage News, now published weekly, will be issued twice a week during the summer, commencing on the first of May.

THE Calgary Tribune says that if the sale of implements is any criterion, this season's acreage will be by far the largest Alberta has ever seen.

A MR. TATE is erecting a building at Selkirk, Man., in which he purposes hatching chickens on an extensive scale, by an artificial process with incubators.

LETTERS patent have been issued increasing the capital stock of the Manitoba Free Press Company from \$100,000 to \$135,500 by the addition of 355 shares of \$100 each.

S. T. TREBLE, dealer in implements, carriages, etc., Crystal City, Man., has started a harness shop in connection with his business, with a Mr. Jeffrey, recently from Ontario in charge.

F. G. RICHARDS, real estate agent, Victoria, B. C., has adopted a system of procuring photographs of all lands offered for sale in his agency. This might be a useful hint to Winnipeg agents.

NICHOLI & COOTES, of Rainy River, are building a steambot to run on Rainy River and Lake of the Woods, between Fort Francis and Rat Portage. She will be ready to run about the 1st of June.

IN future the Portage la Prairie Liberal will be owned and issued by the "Liberal Printing Co." The firm of P. A. Cowan & Co. has been dissolved, Cowan retiring from the business. No change in the policy of the paper will be made.

CAPT. DEACON is building a tug at Prince Albert, to ply on the Saskatchewan. The machinery is now all ready, and when finished the tug will have a carrying capacity of forty tons and will, when loaded, draw about two feet of water.

THE Regina Leader says: The Land Office is literally besieged with applicants for homesteads, and it will not be long before every available section around Regina is taken up. This morning men were hanging on to the Land Office door long before the hour of opening.

CORRESPONDENCE from Brandon to the Winnipeg papers stated that Thomas Spence, general merchant, Brandon, was preparing to move to Vancouver. Mr. Spence writes THE COMMERCIAL to say that though he has contemplated going to Vancouver, yet the item published is misleading, as he has a large stock which it would take him six or eight months to dispose of in the ordinary way.

THE Brandon board of trade will co-operate with the agricultural society in holding the regular exhibition next fall. The assistance of the board should go a great ways towards making the exhibition a success. The board has also appointed a committee composed of C. A. Larkin, W. G. Lindsay and J. Hanbury to confer with the city council at its next meeting regarding establishing of a grain market in the city.

DIFFERENT grades of frozen wheat will be tested on the Manitoba experimental farm, at Brandon, this season. The samples will be taken from wheat regularly graded by the inspector at Winnipeg. These tests may be useful in deciding the question as to the value of frozen wheat for seed.

CATTLE are said to be fat and in prime condition at Calgary, and in the Alberta ranching country generally, though these cattle have picked their living on the prairie all winter. A lot of Alberta cattle taken to the Pacific coast a short time ago, by Van Valkenburg & Bro., meat dealers, of Victoria and Vancouver, have given excellent satisfaction, and further purchases are being made from the same quarter.

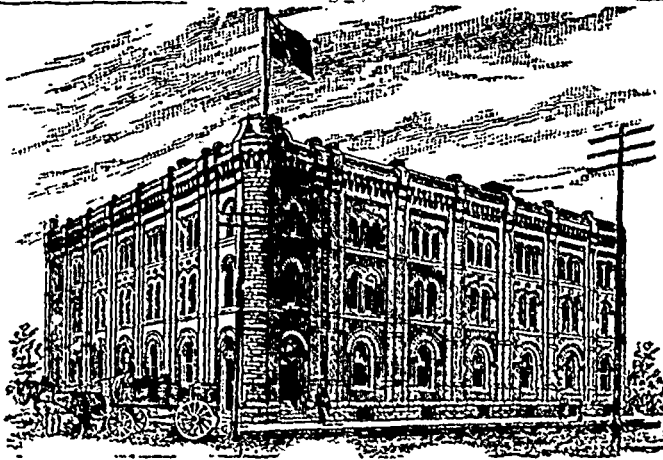
SENATOR Clemlow and Messrs. LaRiviere, Scarth and Taylor, with Alexander Mutchmore, one of the promoters of the Northwestern Junction and Lake of the Woods Railway, have had an interview with Sir Jon Macdonald asking for a land grant for their road. Sir John informed the deputation that he would take the matter into consideration. This road is proposed to run from Emerson to Brandon to connect at the latter point with the Great Northwest Central.

H. SHOREY & Co., clothing, Montreal, continue their unique plan of notifying their customers of a coming visit of a representative from their house, by forwarding a photo of some well-known person, with the information printed on the back thereof. Their last circular is printed on the back of a card, the front of which gives a very good photo of Hon. John Norquay, ex-premier of Manitoba. The card will be appreciated, especially by the friends of the ex-premier.

THE heavy snow which fell throughout the Qu'Appelle district, from Moose Jaw eastward, on the first of April, has vastly improved crop prospects in that region. Agriculturalists are therefore quite enthusiastic. In Manitoba the fall of snow was much lighter, amounting only to barely enough to whiten the ground at Winnipeg. In the province, however, moisture was not required as much as in the country further west. The snow was preceded at Winnipeg by a heavy rain.

IN an article on "Sheep Breeding," published in last week's COMMERCIAL, reasons were given why farmers should wash their sheep before clipping. As the wool season will soon come on, these reasons will bear repetition. Farmers often grumble because from 40 to 50 per cent. is taken off unwashed wool, as compared with prices for washed wool. Washed wool also commands a more ready sale from the reason that the duty on wool going into the United States is the same on washed as on unwashed. Mr. Hallam, of Toronto, puts it as follows:—"The present price of washed wool is 22 cents per pound, and the duty 10 cents, which is about 45 per cent.; the present price of unwashed wool to our manufacturers is 12 cents, and, if we had to send it to the United States, there would be a duty of 10 cents a pound, or over 83 per cent." From this it will be seen that the duty on unwashed wool is proportionately much higher than on washed wool, taking the relative value of the different classes,

GOODS SOLD TO THE  
TRADE ONLY.



GOODS SOLD TO THE  
TRADE ONLY.

## G. F. & J. GALT,

### DIRECT IMPORTERS

**TEAS, SUGARS, WINES, LIQUORS and GENERAL GROCERIES**  
CORNER PRINCESS AND BANNATYNE STREETS, WINNIPEG, MANITOBA.

#### British Columbia.

Reduction works are talked of for Nanaimo.

Alex. McDonald has opened a boot and shoe store at Vancouver.

Vancouver hardware dealers have agreed to close their business places on Saturdays at 2 o'clock.

Wm. McGirr and A. McKinnon, of the Sunnyside hotel, Vancouver, have dissolved partnership.

John J. Cowderoy has again embarked in business at Vancouver. He has opened in the grocery line.

Carroll & Robinson, from the United States, have located at Westminster in the real estate and insurance business.

Robert Lang, general merchant, Golden, and a well known business man, died on April 2, after a prolonged illness.

The new daily paper of Nanaimo, the *Courier*, has already been enlarged, and further improvements are promised.

A post office and a branch of the Meteorological Service of Canada has been established at the Harrison Hot Springs.

Herbert White is erecting a store at the town of Harrison Hot Springs and will open out with general stock some time in May.

T. L. Browne, late a salesman with A. Bullock, Nanaimo, has started in business for himself at that place, in the gents' furnishing line.

The council of the Vancouver board of trade passed a resolution asking the provincial Government to oppose the land grant to the Canadian Western Railway Company.

The following circular, signed by Margaret B. Lang, and dated at Golden, April 4th, has been issued: Robert Lang, my father, having died on 2nd April instant, I am authorized by his family to take charge of the business heretofore carried on by him here, and intend to carry on such business as heretofore. My intention is to pay all claims out of the estate, and hereafter carry on the business myself.

Edward & M. Jilman have opened the Vancouver restaurant, at Vancouver.

Jas. Durick and Charles Warren have purchased the branch general store business of Golden, of J. C. Steen & Co., of Donald, and will do business under the firm name of Durick & Warren.

D. Morrell, of the New Palace Hotel, Nanaimo, has been refused a license for his house. It is claimed that a number of members of the license board are interested in other hotels in the place, hence the difficulty.

The Vancouver *News-Advertiser* has entered upon the third year of its existence. Since its inception this journal has kept pace with the spirit of improvement at Vancouver, and has ever been in the vanguard of progress.

O. F. Wegener, general agent of the American Building and Loan Association, of Minneapolis, has established an agency in British Columbia, with headquarters at Vancouver, and advertises money to loan at 6 per cent.

Evans, Coleman & Evans is the name of a new firm of commission merchants lately established at Vancouver. The firm own the tug *Tepic*, which is on its way from England to Vancouver, where it will form an addition to the local fleet.

Following are the inland revenue collections at Victoria for the month ending 31st March:—

Licenses.....	\$ 100 00
Tobacco.....	1,827 00
Cigars.....	197 15
Spirits.....	4,987 37
Malt.....	1,098 11
<b>Total.....</b>	<b>\$9,204 63</b>

Following are the customs collections at the port of Victoria for the month ending 31st March:—

Duties.....	\$75,184 00
Miscellaneous.....	23 65
Chinese immigration act.....	94 00
<b>Total.....</b>	<b>\$75,561 65</b>
<b>Collections, March, 1888.....</b>	<b>62,173 13</b>
<b>Increase.....</b>	<b>\$13,388 52</b>

## JAMES PYE, FLOUR MILL BUILDER

CONSULTING ENGINEER, &c.  
218 Third Avenue South,  
MINNEAPOLIS, - MINN.

#### A Manitoba Testimonial.

PORTAGE LA PRAIRIE, Dec. 8th, 1887.

JAMES PYE, Esq., Minneapolis, Minn., U.S.A.:

DEAR SIR.—In handing you our check for \$1,501.24, in full for balance of your contract for building and enlarging our mill, we without solicitation wish to state, that you have done your work in a manner highly satisfactory to this company. The capacity which you guaranteed at 275 barrels we find consistent by under the mark, as we are at present making over 300 barrels and the quality of the flour is all that we could wish for. Some of our largest purchasers frankly tell us, it is equal to any flour made in either Minnesota or this province. The yield also we find very satisfactory. We must also bear testimony to your pleasing and gentlemanly manner, and your willingness at all times to meet our wishes. This has made our business relations pleasant and we can honestly say, that we recommend you to any person, requiring anything in the mill building or mill furnishing line. Wishing you the success that straight dealing merits, we are  
Yours very truly,

THE PORTAGE MILLING CO.  
Jas. MacLennan, Managing Director.

Coal now sells at 6.50 per ton at Vancouver, though still held at \$10 per ton at Victoria. The former price should allow a very fair margin of profit at any coast point in B.C., considering the near location of the mines and shipping facilities.

Thomas Dunn, an enterprising hardware dealer, of Vancouver, has had plans prepared for a fine new brick block, to be erected on Cordova street near to the Burrard Hotel. It will be three storeys high, and have 40 feet frontage and a dept of 132 feet.

The assessment of Westminster, just completed, is as follows:—

Total value of land.....	\$2,364,880 00
“ “ buildings.....	903,335 00
<b>Grand total.....</b>	<b>\$3,238,215 00</b>
<b>Exemptions.....</b>	<b>\$644,200 00</b>

Value of rateable property. \$2,624,015 00  
The land is rated at 9-10th value and buildings at 3ds value.

Westminster *Columbian*: The salmon packers are busy laying in supplies and getting the boats and nets ready for this year's work. Nearly every canyery on the river will commence packing next week, and if the run of spring salmon is as good as in other years, a very handsome pack will be laid in before the great sockeye run in July. This will be the earliest commencement of work in the salmon packing history of the Fraser river.

The decision of the privy council in the disputed mineral claims in the railway belt, is giving great satisfaction in the province: The provincial mining regulations are very much more liberal than the Dominion laws, and now that a final decision has been given in favor of the province, it is expected that the mining industry in the railway belt will receive an impetus. On this point the Westminster *Guardian* says: "The eagerness of the Federal Government to seize the minerals and impose its own laws—both cumbersome and iniquitable—and its own officers on the unfortunate miners, resulted as might have been expected, in throwing a wet blanket on the industry. Believed of this incubus the mining industry will resume its old swing and bright prospects will once more illumine the sky."

**W. D. PETTIGREW & CO.**

IMPORTERS AND WHOLESALE DEALERS IN

**Shelf Hardware**

Mill Supplies, Paints, Oils, Glass, Putty, etc., etc.

TINWARE, GRANITEWARE AND HOUSE FURNISHING GOODS.

—WHOLESALE AGENTS FOR—

**WM. BUCK'S STOVES.**

CORRESPONDENCE SOLICITED.

528 Main Street, - WINNIPEG.

**NIXON & CO.**

WHOLESALE DEALERS IN

**Boots, Shoes and Rubbers**

AGENTS FOR

GOODYEAR RUBBER COMPANY OF CANADA.

525 Main St., - Winnipeg.

**STEWART HOUSE**

COR. MAIN & ELLIS STS., MANITOU, MAN. First-Class in every respect! Re-fitted! Re-furnished Good Tables! Good Rooms! Three best Sample Rooms in the Province.

ROUNTREE & CONNOR, Proprietors.

**GREENE AND SONS COMPANY**

WHOLESALE

Furs, Hats, Robes,

GLOVES, MOCCASINS,

ETC., ETC.

Manitoba Fall Trade, 1889



Men's Furnishings.

Special attention is called to our New

PATENT FUR COLLAR AND CAP MONTREAL FOR LADIES.

ENGLISH OAK TANNED

**LEATHER BELTING**

LACE LEATHER, Etc.

Cotton and Woollen Mill Supplies.

**JAMES LESLIE,** JUNCTION OF GRAIG AND ST. ANTOINE STREETS,

P. O. Box 996.

MONTREAL.

**PALMER HOUSE,**

REGINA, ASSINIBOIA,

THE LEADING COMMERCIAL HOUSE. Free Sample Rooms for Travellers. Opposite C.P.R. Station.

CHAS HARLEY, PROP.

**QUEEN'S HOTEL,**

QU'APPELLE, ASSINIBOIA G. S. DAVIDSON, PROP.

Largely patronized by commercial men and possesses special features for the accommodation of this trade. Large Sample Rooms Free.

**THE DARTMOUTH ROPE WORK COMPANY**

**HALIFAX, Nova Scotia.**

Manufacturers of Cordage of Every Description and Sole Manufacturers of

**Blue Ribbon**

THE BEST IN THE MARKET.

EVERY BALL IS DISTINGUISHED BY THEIR TRADE MARK

HEAD OFFICE :

HALIFAX, Nova Scotia



**Binder Twine**

A BLUE RIBBON

TIED AROUND IT

TORONTO OFFICE :

14 Front Street West

AGENTS FOR MANITOBA AND NORTHWEST :

**HENDERSON & BULL,**

WINNIPEG.



# The Commercial

WINNIPEG, APRIL 15, 1888.

## THE BEHRING SEA MATTER.

New interest has been given this important question by the recent proclamation of President Harrison, concerning the taking of fur seal in Behring Sea. Naturally this proclamation caused considerable alarm, especially to those interested in the seal fisheries of the Pacific coast. In our Pacific province of British Columbia, a good deal of attention has been given to the seal fishing industry, and considerable capital has been invested in the business. Sealing has been followed for years by a number of parties in British Columbia, and the business in connection therewith has formed quite an important item in the trade of Victoria. In the neighborhood of twenty-five schooners annually market their catch of seal skins at Victoria, and the majority of these schooners are owned and fitted out at that port. The seals are taken along the Pacific coast, but principally in Behring Sea. Last season, for instance, out of 24,790 seal skins delivered in British Columbia, 16,942 skins were taken in Behring Sea, leaving but 7,848 skins taken along the coast. These figures even do not give a fair comparison, as last season the catch was nearly one-third under that of the previous year, owing to the fact that some of the schooners did not go into Behring Sea, for fear of capture by the United States authorities. Had not this fear existed, a considerably larger number of seals would probably have been taken in Behring's Sea. It will be seen from these figures that the closing of Behring Sea means the practical destruction of the sealing industry of British Columbia.

It will be remembered that it was in the season of 1887 that several Canadian sealers were seized in Behring Sea, on the alleged claim of fishing within United States waters. During the season of 1888 no attempt was made to molest our sealers, though quite a number of them went into the sea, and it was pretty generally understood, though not officially announced, that the United States Government had decided to abandon its absurd claim of jurisdiction over the sea. The recent proclamation of President Harrison therefore caused surprise as well as alarm in some quarters. Since the seizure of the

Canadian schooners in 1887, it is understood that negotiations have been going on between the British Government and the United States, to recover damages for these seizures.

On second reading, and with a better knowledge of the facts connected therewith, the proclamation concerning the taking of seal in Behring Sea, appears to be quite a harmless document. An act passed by Congress some time ago, prohibits, under a penalty of fine, imprisonment, etc., the killing of otter, mink, martin, sable or fur seal within the limits of the territory of Alaska or the waters thereof. Vessels violating the act, may be confiscated, together with their cargoes. On March 2nd last, an act was passed by Congress, applying the first mentioned act regarding the killing of otter, mink, etc., to "all the dominion of the United States in Behring Sea." It was further provided by the act of March 2nd, that the President should issue a proclamation each year, warning all persons from entering the waters of Behring Sea, for the purpose of violating the act regarding the killing of otter, mink, seal, etc. It will thus be seen that the President has issued his proclamation in conformity with the recent act of Congress, and further that the proclamation simply warns all persons against killing the fur animals specified, within the territory of Alaska and the waters thereof, in the dominion of the United States. No reference is made in either the act or the President's proclamation, to the extent of the dominion of the United States in Alaska waters. This important point is left undefined. Of course Canadians interested in the sealing industry, cannot object to the enforcement of these acts by the United States authorities, within the dominion of the United States in Alaska and Alaskan waters. According to the well defined laws of nations, the dominion of the United States in Alaskan waters, will only extend over the waters adjacent to the coast of the main land and islands of Alaska, and over this limited area, the United States has undoubted right to exercise its authority. In discussing this question, *Bradstreet's* journal of New York says:—

The President's proclamation simply warns all persons against violating the act mentioned, and orders the arrest and punishment of all found violating the same. Neither the act nor the proclamation, however, defines the extent of "all the dominion of the United States in the waters of Behring Sea."

It is hardly probable that the United States will again put forth this absurd claim to jurisdiction over Behring Sea,

especially so soon after the virtual abandonment of the claim by the late administration under President Cleveland. If such a claim is made, it will be the duty of the British Government to firmly resist such pretensions. Behring Sea lies between Alaska and the continent of Asia. It is partially enclosed on the south by a long arm extending out from the coast of Alaska, and beyond this a chain of islands. But the most westerly island in this chain, and in possession of the United States, is 370 miles from the coast of Asia. The width of the Sea itself is over 1,000 miles. That the United States should claim jurisdiction over a sea of this size, lying between two continents, especially when its most western possession is 370 miles from the opposite continent, does seem rather ridiculous.

It may be well to note that the proclamation of President Harrison may be taken as a warning to citizens of the United States who prosecute the sealing industry. The acts of Congress prohibit the killing of seal and certain fur-bearing animals, in Alaska and adjacent waters, under the jurisdiction of the United States. The Secretary of the Treasury, however, has authority to allow the killing of animals other than seal, under certain regulations. The Alaska Commercial Company has had an exclusive lease from the Government to kill seal, for some years, and citizens of the United States would be dealt with just the same as foreigners, if they undertook to violate the laws.

Whatever may be the pretensions of the United States to jurisdiction in Behring Sea, the question should be settled at once. The sealing season in the sea comes on in June, and if an understanding is not arrived at at once, our sealing industry in British Columbia may suffer, through fear of the owners to send their ships into the sea. At any rate the British Government should assure its subjects of protection, while engaged in prosecuting a lawful calling on the high seas.

## RAILWAYS IN BRITISH COLUMBIA.

A great many railway schemes of various kinds are just now attracting attention in British Columbia. The enterprising Columbians do not stop at the consideration of merely local enterprises of this nature. They have a number of local railway enterprises in hand, but there are also several railway schemes of international importance, under discussion,

while application has been made for the incorporation of one company which proposes to undertake the gigantic work of building a transcontinental road, as a rival to the C. P. R. Within the present decade, there were many persons in Canada who talked of the Canadian Pacific Railway undertaking as an absurd scheme, and one which would never be completed, but no sooner has this great work been brought to a successful issue, than new transcontinental railways through Canada are talked of. It is quite within the possibilities that a second Canadian Pacific railway may be built, within the lifetime of the present generation, and in fact it is becoming almost a probability that such will be the case. We have also other great railway schemes in Canada which are certain to be carried out sooner or later, such as railways to Hudson's Bay, and into the great Peace and Mackenzie river countries of the north, to say nothing of the more visionary scheme of a railway around the world, via Alaska.

But to return to our subject of railway enterprises in British Columbia. A few weeks ago an article in these columns was devoted to this matter. In an article on "Railways in Western Canada," in the last issue of this journal, the present railway mileage of British Columbia was shown to be about 615 miles, made up of the main line of the C. P. R., from the summit of the Rocky Mountains to Vancouver, 520 miles; Westminster branch C. P. R., 8 miles; Esquimalt and Nanaimo railway on Vancouver Island, 75 miles; Union mines railway, 11½ miles. The Esquimalt road connects Victoria and Esquimalt harbor and naval station with the coal mines of the Nanaimo district. The short road at the Union mines, connects these coal mines with the harbor, in the Comox district, Vancouver Island. This road was completed in January of the present year, and the mines are now being opened and put in operation.

Of the various railway schemes in British Columbia, there are two which may be said to be in course of construction. Both these roads are designed to connect with railways in the United States to the south. One of these roads is intended to connect the city of New Westminster with Puget Sound points. Provision has been made for the construction of a bridge over the Fraser river at New Westminster, and some preliminary work has been done on the road, such as clearing the right of way, etc. The city has voted \$75,000 to this road as a bonus, and a further \$75,000 to assist in the construction of the bridge. It is claimed that the Northern Pacific Company has an interest in this road. The other railway mentioned as under construction, is a C. P. R. scheme. This road is intended to connect the main line of the C. P. R. with a road building northward from Seattle, or Puget Sound. Connection will be made with the C. P. R. near Mission Station, a point on the main line 42 miles east of Vancouver. The

only work done on this road on the Canadian side of the boundary, is in the direction of preparing for the construction of a bridge across the Fraser river, near Mission Station. This is the first work which is necessary in the construction of the road. The C. P. R. Co. is now handling considerable through freight to and from Puget Sound points, which is carried by steamers between Puget Sound and Vancouver. With direct railway connection with Puget Sound cities, no doubt the C. P. R. traffic in that direction would be increased. Both the C. P. R. and the New Westminster roads are expected to be completed this year.

The other proposed railway enterprises in B. C. are of a more uncertain nature, so far as their immediate construction is concerned. One feature common to them all, however, is the claims being made upon the Provincial Government for assistance. The Shuswap & Okanagan railway is a scheme which has been for some years under consideration. The company formed to build this road was voted a grant of \$200,000 by the Provincial Legislature some time ago, and this was further supplemented by a grant of \$3,200 per mile from the Dominion Government, the length of the road being about 50 miles. The projectors, however, have found it impossible, even with this assistance to finance their scheme. The company now asks the Legislature to guarantee interest for twenty years, at four per cent., on \$1,250,000, and they claim that this would secure the construction of the road. This would be in lieu of the \$200,000 provincial grant, and the company would also make over its Dominion grant to the province. A guarantee on the sum mentioned seems a rather large grant in comparison with the length of the road. The Shuswap & Okanagan road is designed to run from the main line of the C. P. R. southward to Okanagan lake, in the interior of the province. This lake is navigable for 60 miles, and there is considerable good agricultural and grazing land in the district which would be opened up. Though it is always desirable to develop the province by the opening up of interior districts, yet the people should be careful that they do not pay too dearly for what they gain in this direction. The Okanagan country is probably one of the most valuable districts in British Columbia, possessing mineral as well as agricultural and pastoral wealth, and the development of the region which would follow railway construction into the district, would no doubt considerably increase the resources of the province.

Another interior railway scheme is the Columbia River & Kootenay road. This proposed road has been given a grant of 200,000 acres of provincial lands and certain concessions in the way of tax exemptions, etc. It is proposed to open up the Kootenay district by means of this road—a region considered to be very rich in mineral and agricultural wealth. Several

other roads are talked of, such as the extension of the Island railway, a short line between Vancouver and the Fraser river, a road from Vancouver southward, via the delta district, to Puget Sound points, and there is also the proposed Victoria, Saanich and Mainland road, all of which schemes have their special advocates.

The one great railway scheme, however, which is attracting the most attention, is the proposed Canadian Western Railway. This is a gigantic scheme contemplated as a rival to the C. P. R., and intended to connect the Pacific coast with the East. A bill incorporating the Canadian Western Railway Company has been passed by the Local House, empowering the company to build a road from the eastern boundary of the province, via the Yellowhead Pass, Cariboo and Bute Inlet, to connect with the Esquimalt and Nanaimo railway on Vancouver Island. The Yellowhead Pass, it will be remembered, is the route originally selected for the C. P. R. The pass is said to present very few engineering difficulties, in comparison with the route finally selected for the C. P. R. A road by that pass would also pass through a more valuable territory, it is claimed, than the country now served by the C. P. R. It is proposed to have this railway cross from the mainland to Vancouver Island, in the vicinity of Bute Inlet, where it is said a crossing is practical, and thus Victoria would become the terminus of the road. It is expected that in time connection would be made at the eastern boundary of the province, with some transcontinental road. A big land subsidy has been voted by the Local House.

A bill has been passed providing for a grant of about twelve million acres of land in aid of the road. This scheme has created a great deal of enthusiasm in Victoria and on the Island, while considerable opposition has developed on the mainland, and particularly at Vancouver, against the granting of land to the company. Naturally Vancouver would be opposed to the creating of another Pacific railway terminus in British Columbia. At this distance, however, it is impossible to look upon this gigantic scheme as one which is likely to be undertaken at once, though in the future it is quite probable that a railway may be built through Yellowhead Pass. The land grant is certainly a big thing for a single province to hand over to a railway company, but the bill granting the land was carried by a vote of seventeen to three, despite the protests of the Vancouver board of trade. The land grant will include alternate blocks extending thirty two miles on either side of the proposed road, each block of land having a frontage of twenty miles on the railway, and to be opposite a similar block to be retained by the Government, and will total up to nearly 12,000,000 acres, including some very valuable timber and mineral lands. The bill stipulates that construction is to commence within two years, and the road is to be completed in ten years.



## Patronise Home Industry

I MANUFACTURE MY OWN

## SADDLERY GOODS

and Guarantee Them as Represented.

Head-quarters for HARNESS AND SADDLES  
All kinds of HORSE GOODS, SADDLERY HARD-  
WARE, LEATHER and HARNESS MAKERS SUP-  
PLIES, TRUNKS, VALISES, ETC.

## E. F. HUTCHINGS,

437 MAIN STREET,  
Near the Post Office,

WINNIPEG, M.A.N.

Branches at Calgary, Neepawa and Portage  
la Prairie.

## White & White,

(LATE WHITE, JOSEPH & Co.,)

7 Wellington Street West, TORONTO.

Laces, Embroideries, Cur-  
tains, Gloves, etc.

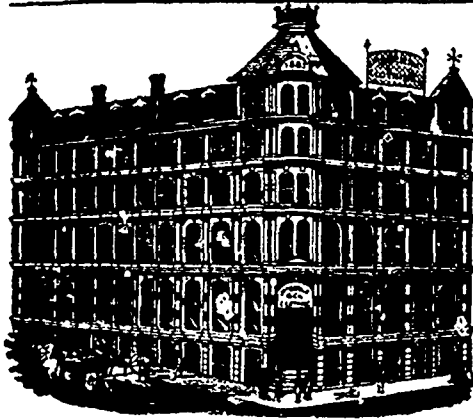
WHITE & WHITE.

## JAS. McCREADY & CO.,

WHOLESALE

Boot and Shoe Manufacturers,  
MONTREAL.

SAMPLE ROOMS, 496 MAIN ST. WINNIPEG  
W. WILLIAMS, AGENT.



HEAD OFFICE AND MANUFACTORY:  
VICTORIA SQUARE, - MONTREAL.

Furniture and Undertaking House.

## M. HUGHES & CO

WHOLESALE & RETAIL

FURNITURE WAREHOUSES, 285 Main St  
UNDERTAKING ROOMS, 517 Main Street

TELEPHONE No. 413.

Closest prices given to dealers

Satisfaction guaranteed in every  
department.

## LYMAN BROS. & CO.,

WHOLESALE

## DRUGS AND MEDICINES

Every requisite for the Drug Trade  
promptly supplied.

TORONTO, ONT.

## KIRKPATRICK & JOOKSON

Established 1860,

MONTREAL,

Commission Merchants,

FLOUR, GRAIN, BUTTER, &c.

Consignments and Orders solicited

## Robert McNabb & Co.

—MANUFACTURERS OF—

LADIES' AND CHILDREN'S

## UNDERWEAR.

Samples Expressed to any Point in  
the Dominion for Inspection.

No. 1831 NOTRE DAME STREET,  
MONTREAL.

## Wm. Ewan & Son,

WHOLESALE  
CLOTHIERS,

650 Craig St. MONTREAL.

Represented by RUDING, KIRKWOOD & Co.,  
No. 12 Market Street, WINNIPEG.

## JAMES O'BRIEN & CO.,

—MANUFACTURERS OF—

## CLOTHING

—AND—

Importers of GENTS' FURNISHINGS.

HATS, CAPS AND FUR GOODS, GLOVES  
AND MITTENS.

72 and 74 Princess St., Winnipeg

Our Travellers are now on the road with  
Fall Samples. Would invite inspection before  
placing your orders.

## MONTREAL BRASS WORKS.

MONTREAL, P.Q.

## Robt. Mitchell & Co

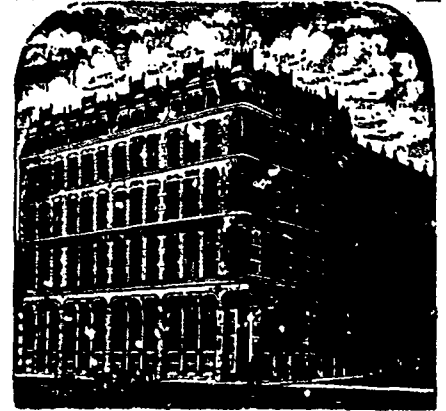
Proprietors, Manufacturers of

Gas Fixtures of Every Description,  
Engineers, Plumbers,

Steam & Gasfitters Brass Goods,

Gas Meters and Automatic Fire Extinguishers.

SAMUEL HOOPER, DEALER IN MONUMENTS, HEAD-  
STONES, Mantle Pieces, Grates, &c. Special designs fur-  
nished on application. Cor. Bannatyne and Albert Sts.  
Winnipeg.



## S. GREENSHIELDS,

SON AND CO.,

GENERAL

## DRY GOODS,

17, 19 & 21 Victoria Square and 730,  
732, 734 and 736 Craig Street, MONTREAL

Complete Set of Samples with

McLean Bros.,

Also with Donaldson's Block, WINNIPEG

Wm. Skeene, Innes Block, Vancouver, B.C.

## MACKENZIE & MILLS,

## WHOLESALE GROCERS

Special attention given to

Teas, Coffees, Canned Goods,

DRIED FRUITS, Etc.

CORNER KING AND ALEXANDER STREETS,  
WINNIPEG, MAN.

## Booth & Langan,

WHOLESALE MANUFACTURERS OF THE

EAGLE BRAND

Fine Shoes, Boots, Slippers,  
ETC., ETC.

Every Variety of McKay Sewn, Goodyear  
Welts and Hand Sewn.

36 and 38 St. Peter Street, and 64 and 66 Foundling St. MONTREAL

Represented by W.M. WILLIAMS,  
496 Main Street, WINNIPEG.

## A. RAMSAY & SON

37 to 41 Recollet St., Montreal,

Manufacturers of

Paints and Colors, Varnishes, Mixed Paints,  
Silvered Mirrors, Stained and Ornamental  
Glass, and Importers of all  
Painters' Material.

Plate Glass and German Sheet.  
R. RAMSAY & SON.

## WINNIPEG MONEY MARKET.

In wholesale trade circles the general complaint is still upon the tiresome subject of slowness in collections and general closeness in financial matters. While it is not difficult to dispose of goods, it is decidedly difficult to make collections in reasonable time. In the city as well as in the country trade, the same features prevail, and there is not much prospect of early improvement. The loan companies report a fairly active business in loans on real property. A large movement in farm lands is reported. Sales of farm lands are being made freely all over the province, and very good prices are being realized, ranging from \$3 to \$10 per acre in good districts, while even higher prices have been paid for desirable farms near leading markets. Many of the settlers of the better class are purchasing farms convenient to markets in preference to taking up the free Government lands in the more distant settlements. Farms for rent in good localities are also in demand.

## WINNIPEG WHOLESALE TRADE.

Advices from the country towns reported business generally very quiet, and the towns almost deserted. Weather conditions last week were very favorable for seeding, and the farmers were rushing work on their farms, hence the quietness in country towns and villages. In the city wholesale trade, however, there did not seem to be much change, business moving along about as usual. The demand for lumber, hardware and building supplies, paints, etc., continues active. Groceries and provisions were perhaps a little slower. Textile lines are still quiet. There have been no important changes in prices outside of the continued advance in sugars. The city retail trade is still rather quiet.

### FRUITS—DRIED.

Trade steady, with prices as follows:—Valencia raisins \$2.25 to \$2.35; Larger Valencias, \$2.75 to \$3.00; London layers \$1.75; Black Basket, ½ boxes, \$1.75; Black Crown, \$6.25. Currants 7 to 7½c; evaporated apples, 8½c; peaches, 28 to 30c; apricots, 22½c; peeled peaches, 22 to 23c; unpeaches, 17 to 19c; prunellas, 19c; peeled dried apples, 5½ to 6½c. Elemo figs, in 10 to 20 lb. boxes, 15 to 18c per lb; one pound boxes, \$1.75 per dozen; cooking figs, 7c per lb; Fancy Tunis dates on stem, 20c per pound; fancy golden dates in 50lb. boxes, 9c per pound; ordinary dates, 7c per lb; walnuts, 18 to 20c per lb; peanuts, raw, 15c; roasted, 17c; almonds, 18 to 20c; pecans, 17c; Filberts, 15c; Brazils, 17c per lb; Coconuts, \$10 per 100.

### FRUITS—GREEN.

The market is fairly well supplied with good apples. Florida oranges are out of the market, and old stocks of Malaga grapes are used up. Some small lots have been brought in, but they are held at fancy prices. California oranges are in good supply. Some good cranberries are offering. New maple syrup and sugar are offering more freely. In large lots oranges have sold somewhat under quotations. Prices are: Good to choice apples, in good condition, \$3.50 to \$1.50 per barrel.

Messina lemons are quoted at \$5.50 to \$6.00 per box. Messina oranges, \$4.50 to \$5 per box. California fancy Riverside seedless oranges, \$4.50 to \$5.00 per box. California Washington Naval oranges, \$6.00 per box. Bananas, \$3.00 to \$4.50 per bunch. Malaga grapes in 50 to 65 pound kegs are quoted at about \$16 per keg. Cranberries are quoted \$7 to \$7.50 per barrel for sound fresh fruit. Southern red onions, \$1.25 per crate of 50 pounds; Spanish onions, \$1.50 per crate of about 50 pounds. Cider, rectified, in barrels, 35c per gallon. New maple sugar, cakes, 13 to 14c per lb. Maple syrup, in tins or bulk, \$1.25 per gallon.

### FISH.

Prices are very irregular for fresh fish at present, and hardly quotable. Trade rather quiet. Cured fish are quoted: Boneless cod in crates of small boxes, 8c per lb; in boxes of from 25 to 40 pounds, 7½c per lb; Labrador herrings, No. 1, \$9.50 per barrel; No. 2, \$8.50; No. 1, \$5.25 in half barrels; smoked red herrings, 30 cents per box; St. John blotters, \$1.40.

### GROCERIES.

The "boom" in sugar prices has continued to be the feature of the grocery trade. Further advances in both white and yellow sugars were made by refiners last week, and corresponding advances have been made by wholesale dealers. At recent tea sales at New York and Chicago, prices have been higher. The fire which destroyed from 30,000 to 40,000 packages, mostly Japan tea, at Chicago, has visibly affected prices in that market. Shanghai advices state that it is an established fact that there will be a shortage in blacks of 6,000,000 lbs from northern, and at least 12,000,000 lbs. from southern ports. In greens there would appear to be a shortage of 2,000,000 about. In the canned goods line a good deal of dissatisfaction is being expressed in the east with packers, who are said to be selling to retailers at even lower prices than were made with wholesalers, who contracted for supplies earlier in the season. The custom is for wholesalers to contract for supplies in advance, and after supplying the wholesale trade, it appears that packers have been selling the balance of their stocks to retailers, at cut prices. Quotations here are: Sugars, yellows, 7½ to 7¾c; granulated, 9 to 9½c; lumps 9½ to 9¾c. Coffees—Rios, from 21 to 24c; Java, 25 to 30c; Old Government 33 to 34c; Mochas, 32 to 35c. Teas, Japan 23 to 46c; Congous, 22 to 60c; Indian teas, 35 to 60c; young hyson, 26 to 50c. T. and B. tobacco, 56c per pound; P. of W., butts 47c; P. of W. caddies, 47½c; Honeyuckle, 7s, 55c; Brier, 7s, 53c; Laurel Bright Navy, 3s, 56c; Index d. thick Solace, 6s, 48c; Brunette Solace, 12s, 48c. Special brands of cigars are quoted: Reliance, \$50; Gen. Arthur, \$50; Mikado, \$40; Terrier, \$30 per 1000.

### LUMBER.

The demand for lumber continues fairly active, and stocks are already becoming short. There is now a good deal of difficulty in filling diversified orders, as some lines are very low. Millmen are, therefore, preparing to start their mills as early as possible. Men have been sent out to run logs for the country mills in Man-

itoba, including the Riding Mountain district, from which a good many spruce logs will be taken this spring, water being favorable. In the country tributary to the Lake of the Woods, the streams are reported to be low, the snow having gone off without making much change on the streams. The movement of logs will depend on the river later on. Last year the streams were low when the snow went off, but there was plenty of water later, when the spring rains set in. Prices keep steady, and have rather a firm tone, which has been induced by the brisk demand, with the prospects of a large trade for the balance of the season. The early departure of the snow, which interfered with the getting out of logs to some extent, has also had the effect of strengthening prices. At any rate, there is not likely to be any change in quotations, until the result of the spring log movement is known. Should the season be a poor one for floating the logs, prices may be expected to rule very firm, as there is likely to be a demand for about all the lumber that could be cut this season. List prices f. o. b. at Rat Portage, Keewatin and Norman, 60 days, 2 per cent. in 30 days, are: Dimension—2x4 to 12x12, 12 to 16 feet long, \$15; do 10, 18, and 20 ft long, \$16. Fifty cents per M advance on each foot over the above length up to 24 feet long. One dollar per M advance on each foot over 24 feet long. \$1 per M advance on each inch over 12 inches surface. Surfacing, 50c per M; Surfacing and sizing, \$1.00 per M. Boards—1st, common, rough, \$16.50, dressed, \$17.50; 2nd common rough \$15, dressed, \$16; Culls, rough, \$11; dressed, \$12; 1st common, stock, 12 in, rough, \$19, dressed, \$20; do, 8x10 in, rough, \$18, dressed, \$19; 2nd common, 12 in, rough, \$17; dressed, \$18; do, 8x10 inch, rough, \$16, dressed, \$17. Ten feet long and under, \$1 less per M. Shiplap—10 inch, \$17.50; 8 inch, \$17. 8 and 10 inch flooring and siding at \$1 per M advance. Siding, ceiling and flooring—1st, 6 inch, \$29; 2nd, do, \$25; 3rd, do, \$21; 4th, do, \$18; 1st, 5 inch, \$29; 2nd, do, \$25; 3rd do, \$20; 4th do, \$17; 1st, 4 inch, \$29; 2nd do, \$25; 3rd do, \$19; 4th do, \$16. \$1 per M advance for dressing on both sides. \$1 per M less for lengths 10 feet and under. Bevel Siding No. 1, 1st siding ½ in. x 6 in, \$20; No. 2, 2nd, \$17. Stock No. 1, \$35; No. 2, \$30; No. 3 \$25. Clear, 1 inch—1st and 2nd, \$40; 3rd, \$32. Finishing, clear—1½, 1½, and 2, inch—1st and 2nd, clear, \$45; 3rd, \$40; select, \$30; shop, \$25. Mouldings—Window Stops, per 100 feet lineal, \$1.00; Parting Strips, do, 60 cts; ½ round and cove, per 100 feet lineal, 75 cts. Casing—4 inch, O. G., per 100 feet lineal, \$1.75; 5 in, do, \$2.25; 6 in, do, \$2.50; 8 inch, O. G., base, \$3.50; 10 in, do, \$4.25. Lath, \$2.00. Shingles—1st quality, \$3; 2nd do, \$2.50; 3rd do, \$1.50; 4th do, \$1. Dealers are requested to order by number. No delivered prices.

### RAW FURS.

Last week we gave a full report of the prices obtained at the Hudson's Bay Co's. London fur sales for March, and also a report of C. M. Lampson & Co's. sales as far as they had been concluded at that date. Lampson's sales have now been concluded, and the result has been

fairly satisfactory in point of prices. Beaver are a shade under last January prices, also raccoon and wolf, but mink have again sold higher. Following are the prices obtained at Messrs. Lampson & Co's. sales, as cabled to the New York *Fur Trade Review*: Sea otter, 50 per cent. higher than in March '88; red fox, 15 per cent. higher than in March, '88; lynx, 5 per cent. higher than in January, '89; white fox, 15 per cent. higher than in January, '89; beaver, 5 per cent. lower than in January, '89; skunk, same as in January, '89; Mink, Eastern and Halifax, 50 per cent. higher than in January, '89; mink, other than above, 15 per cent. higher than in January, '89; raccoon, 15 per cent. lower than in January, '89; wolf, 10 per cent. lower than in January, '89; Australian opossum, 10 per cent. lower than in January, '89; wolverine, same as in March, '88; musquash, same as in January, '89; black musquash, 20 per cent. lower than in January, '89; opossum, 15 per cent. lower than in January, '89; gray fox, 5 per cent. lower than in January, '89; badger, same as in January, '89; fur seal, dry, same as in January, '89; wild cat, 20 per cent. higher than in January, '89; house cat, 10 per cent. higher than in January, '89; black bear, Northern, 40 per cent. higher than in March, '88; black bear, Southwestern, 15 per cent. higher than in March, '88; bear, brown, 30 per cent. higher than in March, '88; bear, grizzly, 50 per cent. higher than in March, '88; bear, Siberian, 75 per cent. higher than in March, '88; fur seals, Copper Island and Cape Horn, 30 per cent. higher than in March, '88; monkey advanced from 10 to 15 per cent.; Chinchilla and Bastard Chinchilla—Supply small: prices ruled high.

## GRAIN AND PROVISION MARKETS.

### WINNIPEG.

#### WHEAT.

The week has been a rather unsatisfactory one for holders of wheat, as will be seen by the reports of leading wheat markets. Prices closed weak in Montreal at the end of last week, and quotations for Manitoba No. 1 hard were from 2 to 5c lower. On Friday No. 1 hard at Montreal was held at from \$1.25 to \$1.28. Here there was literally nothing doing in the cereal. Deliveries by farmers were next to nothing. The weather was extremely favorable for seeding all last week, being warm and dry, though a little windy at times. The thermometer registered as high as 70 in the shade. Farmers made excellent progress with seeding, and by the close of the week the bulk of the wheat acreage was sown. Reports from the country intimated that many farmers were through with their wheat, and that the increase in the acreage this year would range from 20 to 33 per cent. Early sown wheat is now appearing above ground. All reports are most encouraging. The early season will also allow of a large amount of spring plowing, which will mean a marked increase in the acreage of other grains. Reports from the country indicate that farmers are making an effort to cultivate every available foot of land.

#### FLUR.

Prices have shown no further change since

our last report, and hold as follows:—Patents, \$3.00; strong bakers, \$2.80; snowflake, \$2.70; XXXX, \$2.30; second bakers, \$2.55 to \$2.65; superfine, \$1.65; middlings, \$3.00; Graham flour, \$2.80.

#### MILLSTUFFS

Prices hold unchanged at \$10 per ton for bran, and \$12 per ton for shorts, with \$1 per ton advance asked for small lots.

#### OATS

Appear to be irregular in price, and with a very light business, close quotations are impossible to get. About 31c was offered for good average, and 30 to 32c would cover the range.

#### OAT AND CORNMEAL, ETC.

Quotations are unchanged as follows: \$2.60 for standard oatmeal and 2.75 for granulated per hundred. Rolled oats, 80 pound sacks, \$3. Cornmeal was held at \$2 per hundred. Pot barley is held at \$2.75, and pearl barley at \$3.25 per sack.

#### CHEESE.

Dull at about 10½c. in jobbing lots.

#### BUTTER.

Receipts continue light, especially of good qualities, and any really good will bring good prices and command ready sale. About 20 to 21c per pound may be quoted for good to choice.

#### EGGS.

Receipts continue to come forward freely, and with the large stocks now in the city, the Easter demand is not at all likely to have any influence on prices. Case lots were selling at 12c., early in the week, but later were offered freely at 11c to the trade. Large lots were taken by packers at 10c, and the latter price was even being talked of for case lots.

#### LARD.

Home rendered is usually held at \$2.40 in 20 lb. pails, and Chicago at \$2.35.

#### CURED MEATS.

Prices are fairly firm and quoted as follows: No. 1 pork, \$19 per barrel; long clear dry salt bacon, 13c per lb; smoked breakfast bacon, 13½ to 14c; rolls, 12½c; hams, 14 to 14½c; pork sausage, 8c per lb. Bologna sausage, 8c per lb. For smoked meats, sales at close cash prices are being made at ¼ to ½c per pound under above quotations.

#### DRESSED MEATS.

Dressed beef is offered by the carcass at 7c for choice and as low as 6½c for fair to good. Higher prices were expected for fancy Easter beef, and as high as 8c per pound was talked of, but just at present there is a little extra competition among wholesale butchers, owing to the appearance of a new house in the field. This has led to cutting prices by the other wholesale butchers. As one butcher put it, some of them would probably sell if they only realized the hide and tallow. High prices for fancy beef are therefore uncertain. Wholesale butchers are holding dressed hogs at 8½c per lb. There is no fresh killed mutton in the market, a considerable quantity of old winter stock is still held, and dealers are trying to push this off. Prices are low and irregular, ranging from 6 to 7c per lb. Veal is held at \$ to 10c, and as high as 11c has been paid for fancy by the carcass.

#### POULTRY.

Chickens bring good prices, good dressed bringing 75c to \$1 per pair. Wild ducks are offering, and worth about 40c per pair.

#### LIVE STOCK.

A good many lots of cattle have arrived by rail and otherwise in the city, including some very good animals. Good ordinary animals are worth about 4c per pound live weight, and choice have brought 4½c. It would require to be something very fancy to bring over the latter price. Hogs are not offering in any number, and may be quoted as nominal at about 6c live weight. It is reported, however, that considerably above this figure has been offered.

#### VEGETABLES.

Potatoes are easier, and obtainable in quantities at 20c per bushel. Some still think higher prices will rule when the demand for planting sets in. At some western points potatoes are held at 50 to 75c per buche, and the supply is known to be short for planting. Some green stuff is offering, including lettuce and onions, home grown, at 50c per dozen bunches. Other prices are unchanged as follows: Onions, \$1.40 to \$1.50; carrots, 75c; turnips, 25c; parsnips, \$1.20; beets, 50 to 60c, all per bushel. Cabbage average \$1 to \$1.50 per dozen for good.

## Extending our Industries.

Since the recent change in the management of the Manitoba coffee and spice mills, of Winnipeg, a more enterprising and progressive policy has been adopted. The building has been overhauled, and the more antiquated machinery is being replaced by the very best modern appliances. These improvements are being made under the management of Mr. J. W. Watson, a thoroughly practical man, who arrived from Toronto a short time ago to take charge of the mills here. The mills are now working on coffees, spices, chocolates, cocoas, etc., and it is the intention to add baking powders and extracts to the manufactures of this establishment. Another very important move is being made, and this is nothing less than the establishment of a starch factory in connection with the coffee and spice mills. A large building is being erected for this purpose, adjoining the present buildings, and in about six weeks' time it is expected to have the starch factory in operation. It is the intention to manufacture the starch from wheat. A number of tests have been made with wheat, potatoes, etc., and it has been found that the most satisfactory results can be obtained from wheat, especially as regards the quality of the product. Manitoba wheat, with its large percentage of starch, should be well adapted to the purpose. The establishment of a starch factory here has been advocated in this journal for some time, and it has been pointed out that there was a good opening for such an industry. The enterprise is in good hands, and its success is assured. Thus one by one our industries are expanding. Mr. Watson expresses his confidence in the belief that all the goods which will be manufactured in his establishment, can be turned out to good advantage here, in competition with eastern concerns. When this establishment is in complete running order, according to the plans of the new management, it will form a very important addition to the industries of Winnipeg. We feel certain that the local wholesale houses will give every encouragement to the manufactures of this establishment in their business relations with the country generally.

## The Lake Superior Region.

The Fort Arthur *Herald* says the merchants report quite an improvement in business this spring over that of 1888.

P. S. Kough, late with the Hudson's Bay Company, has opened business at Port Arthur in clothing, furnishings and boots and shoes.

The machinery is now being put in place in Dyment's new saw mill at Thessalon. The mill will have a capacity of 80,000 feet per day.

With the opening of spring, activity in connection with mining matters is increasing. A busy season in mining development is expected in the Thunder Bay district.

A joint stock company is being formed at Chapleau to build a town hall at an estimated cost of \$4,000, to be occupied as a public hall, mechanics' institute, reading room and lodge rooms.

A steamer which will burn coal oil for fuel has arrived at Savanne from Carleton Place, for H. N. Nichols, for service on Whitefish Lake. It measures about 25 feet over all. It will be transported from there by wagons.

A letter was read at the last meeting of the Port Arthur council from Thomson of Qu'Appelle, asking a bonus of \$5,000 to establish a stove foundry and machine shop. It is understood he could get a free site and exemption from taxation for ten years.

J. A. Carman publisher of the *Manitoba Colonist*, has been granted \$300 by the council and \$150 by the board of trade of Port Arthur, to publish an illustrated edition of Port Arthur and district. Mr. Carman promises something handsome in the line of a special illustrated paper. He is having a large number of original engravings prepared in the finest style of the art.

A TELEGRAM from Victoria, B. C., on Saturday morning announced the death of Hon. Robt. Dunsmuir, president of the Legislative Council. Mr. Dunsmuir had been unwell for some days, and on Wednesday morning was

found in bed in a comatose condition. He slowly recovered from this condition, but a relapse occurred, and he died on Friday. Mr. Dunsmuir was the foremost man in British Columbia, and one of the wealthiest men in Canada. He was president of the Vancouver Island railway, and largely interested in coal mining, controlling the Wellington mines. He had also built a railway and opened coal mines at Colox, on Vancouver Island, which he was preparing to work on a more extensive scale than anything in the province. He was also largely interested in shipping, and many other enterprises including the Albion Iron Works, of Victoria, the largest manufacturing establishment in the province. He had recently erected a magnificent residence at Victoria.

A TELEGRAM from Montreal on Saturday says: A further advance of 1 cent took place to-day in granulated sugars, making the third advance in as many days. The price is now 8 cents from the refiners' combines; the selling figures will be, therefore, 8½ to 8¾ cents. The market is firm abroad. A cable from London on the same day says: The sugar market was very active to-day, and dealings were attended with considerable excitement. The report is current to the effect that the Cuban sugar crop is short and that it is mostly in the hands of a few continental capitalist.

At Ottawa on Friday N. Bawlf and C. N. Bell, representing the Winnipeg, and F. E. Gibbs the Port Arthur boards of trade, met Hon. Mr. Costigan regarding the Manitoba grain standards. President Blain, Vice-President Mathewr, Secretary Willis and six mem-

bers of the council of the Toronto board of trade were present and protested against the right being conceded the western boards to make the standards themselves. Mr. Mathews spoke at length and said there were no exporters in Manitoba, but all in the east, and distinctly stated that not a grain man in Manitoba was capable of selecting the proper standards. The Manitoba representatives repudiated this statement. From the Minister's statement, it is believed, the changes, satisfactory to Manitoba, will be granted.

SOME additional facilities have been added to the Royal Soap Manufacturing Co.'s establishment, of Winnipeg, and an effort is being made to further improve the quality of the goods turned out by this local institution. A new line of laundry soap is now being placed on the market, to be known as Royal Crown. This the manager declares to be equal, if not superior, to any soap ever handled in this market.

JAS. D. ALLAN, representing A. A. Allan & Co., wholesale hats, furs, etc., Toronto, is now in the west in the interest of his house, and will travel over the country as far as Calgary probably. Mr. Allan is showing samples of fur goods for the fall and winter trade.

THE land grant bill in favor of the Duluth & Winnipeg railway, was again thrown out by the Minnesota state legislature on Friday. This will probably end the efforts to obtain the land grant for the road.

Jos. Young, hotel, Plum Creek, Man., offers to sell out.

**A. W. MORRIS & BRO.**  
 MONTREAL, QUE.,  
 MANUFACTURE THE CELEBRATED

**"RED CAP" BRAND BINDER TWINE.**

This Twine was used during the harvest of 1888, from Prince Edward Island to British Columbia without complaint, and is undoubtedly superior to anything manufactured on the American Continent. Enquiries are coming in freely from Iowa, Minnesota, Kansas, Dakota, etc., which is the highest possible

**PROOF OF ITS EXCELLENCE.**  
**A "RED CAP" ON EVERY BALL.**  
**Nothing Else Genuine.**

**FACTORIES—Montreal, Que., and Port Hope, Ont. AGENCIES—Toronto, Ont., Halifax, N. S., and Vancouver, B. C.**

**Manitoba and Northwest Agents:**  
**MERRICK, ANDERSON & Co., Winnipeg.**

We are also the largest manufacturers in the Dominion of Cordage, Jute and Cotton Bags, Calceined and Land Plaster.

**Head Office : - - MONTREAL.**

# E. B. EDDY MANUFACTURING CO.

HULL, - QUE.

Manufacturers of Pails, Tubs, Washboards, Matches, also of Spruce BUTTER TUBS and Woodenware of all Kinds.

—THE ONLY MANUFACTURERS IN CANADA OF THE CELEBRATED —

## INDURATED FIBREWARE,

Special attention is directed to PAILS, MILK PANS, etc., made of this ware, which has many advantages over Tinware for Dairy Use. It has No Hoops, is Seamless, Tasteless and Odorless and CANNOT BE BROKEN.

For Sale by all Wholesale Dealers.

Agents for Manitoba and the Northwest: **TEES & PERSSE, Winnipeg.**



## TASSE, WOOD & CO.

Manufacturers of

### Fine Cigars,

MONTREAL.

Our Brands: { Reliance Terrier,  
Mikado and General Arthur.

Are unsurpassed by any in the Dominion

Ask your Wholesale Merchant FOR THEM.

JAS. COOPER.

J. C. SMITH

## Cooper & Smith,

MANUFACTURERS,

Importers and Wholesale Dealers in

### BOOTS AND SHOES!!

36, 38 & 40 FRONT ST. WEST,

## TORONTO.

### Chicago Board of Trade Prices.

On Monday, April 8, May wheat opened 1/4c lower than Saturday's closing price, at 90 1/2c, and ranged during the day from 86 1/2 to 90 1/2c, the opening price being the top for the day. Liquidation in May and June wheat was very heavy. July closed on Saturday at 80 1/2c, and declined to-day to 83 1/2c. Closing prices were:

	April.	May.	June.	July.
Wheat.	85 1/2	86 1/2	86 1/2	83 1/2
Corn .....	34 1/2	35 1/2	35 1/2	33 1/2
Oats .....	25	25 1/2	25	25
Pork .....	---	11.90	12.00	12.10
Lard .....	6.55	6.90	6.92 1/2	6.97 1/2
Short Ribs	6.00	6.05	6.12 1/2	6.20

May wheat opened 1/4c lower on Tuesday, and ranged from 84 1/2 to 86 1/2. July ranged from 83 to 84 1/2c. Winter wheat markets were weak, on favorable crop reports. More shipping business was doing, due no doubt to the fact that actual values for milling wheat at Chicago have now got down to correspond with prices in other domestic markets. Closing prices were:

	April.	May.	June.	July.
Wheat	85 1/2	86 1/2	86 1/2	83 1/2
Corn .....	34 1/2	35	35 1/2	36
Oats .....	25	25 1/2	25	25 1/2
Pork .....	---	11.92 1/2	12.00	12.07 1/2
Lard .....	6.55	6.90	6.95	7.00
Short Ribs	6.02 1/2	6.07 1/2	6.15	6.20

On Wednesday trading continued active in wheat and prices unsettled. Closing prices were:

	April.	May.	June.	July.
Wheat	86	87	86 1/2	83 1/2
Corn .....	34 1/2	34 1/2	35 1/2	35 1/2
Oats .....	25	25 1/2	25 1/2	25
Pork .....	---	11.95	11.75	11.85
Lard .....	6.50	6.85	6.90	6.95
Short Ribs	5.90	5.95	6.02 1/2	6.10

On Thursday, trading in wheat was active in July option. Closing prices were:

	April.	May.	June.	July.
Wheat	85 1/2	86 1/2	86	82 1/2
Corn .....	34 1/2	34 1/2	35	35 1/2
Oats .....	25 1/2	25 1/2	24 1/2	24 1/2
Pork .....	---	11.50	11.60	11.67 1/2
Lard .....	6.77 1/2	6.82 1/2	6.87 1/2	6.92 1/2
Short Ribs	5.87 1/2	5.92 1/2	6.00	6.07 1/2

On Friday trading continued active in July wheat, and prices still unsettled. Closing prices were:

	April.	May.	June.	July.
Wheat	---	88	87 1/2	81 1/2
Corn .....	---	34 1/2	35 1/2	35 1/2
Oats .....	---	---	---	---
Pork .....	---	11.50	11.60	11.70
Lard .....	---	6.80	6.85	6.90
Short Ribs	---	---	---	---

CRAIG & ROYNE have opened a flour and feed store at Virden, Man.

F. J. BLAND, photographer, Winnipeg, has been sold out by the bailiff.

SLATER & Co., furniture, Moosomin, Assa., have sold out by auction, and giving up business.

RICHARD BOGUE, hardware and groceries, Moose Jaw, Assa., has added dry goods to his business.

H. FERGUSON, butcher, Moose Jaw, Assa., has formed a partnership with R. H. Riddell, under the style of Riddell & Ferguson.

THE sheriff is in possession of J. Gurn's hotel, Winnipeg, and will offer the effects thereof for sale on April 16.

THE stock of Thos. Whitehead, general merchant, Neepawa, Man., will shortly be offered for sale by the assignee.

MISS SHEPHERD, from Winnipeg, has opened a millinery and dressmaking establishment at Pilot Mound, Man.

McKINNON Bros., general merchants, Rut Portage and Keewatin, are closing out their branch at the latter place.

It is reported that the two breweries at Brandon will be amalgamated, and a joint stock company formed to control them.

MR. S. A. D. BERTRAND, of Winnipeg, the popular official assignee, is not the assignee in the estate of Moore & Co. A. H. Bertrand, an entirely different person, is the party to whom Moore & Co. have assigned in trust.

AN Ottawa telegram on Friday says: C. S. Drummond and James Rogers arrived to-day from England, where they were endeavoring to arrange for the construction of the Arthabasca & Alberta Railway, which runs from Edmonton to Calgary. It is understood that they failed in their negotiations unless the Dominion Government would consent to give them a cash subsidy. They had an interview with Mr. Dewdney and the other ministers to-day, but there is little likelihood of their obtaining any direct financial aid.

FRIBERG, KIRKWOOD & Co., of Winnipeg, are now dealing exclusively with the wholesale and jobbing trade, making specialties of teas and Mediterranean fruit, grocers' specialties, etc. They are representing in Western Canada a number of leading manufacturing and other houses, including Octavius, Steel & Co., of London, England, and Calcutta, handling Indian teas: Tiffin Bros., importers, Montreal; Griffin & Skelley, of Riverside, California, fruits; Gustave A. Jahn, rice, New Orleans. Michael Doyle, Rochester, N. Y., dried fruits. The Cincinnati Syrup and Molasses Co., etc.

**Eggs Wanted**

—AT—  
**Allen & Brown,**  
 PORK PACKERS AND COMMISSION MEN,  
 70 McDERMOT STREET, WINNIPEG.  
 Hams, B. Bacon, L. C. Bacon, Spiced Rolls,  
 Bologna, Sausage, Lard, etc.  
 CORRESPONDENCE SOLICITED. WHOLESALE ONLY.

**J. S. CARVETH & CO.,**  
**PORK PACKERS**  
 Sugar-Cured Hams, Breakfast Bacon, Spiced  
 Roll, Pure Pork Sausage, Long Clear  
 Bacon, Bologna Sausage.  
**PACKERS AND COMMISSION MERCHANTS.**  
 23 Jemima St., WINNIPEG.

HIGHEST CASH PRICE PAID FOR  
**DRESSED HOGS.**  
 Quotations furnished upon application,  
**A. MACDONALD & CO.,**  
 Packers and Commission Merchants,  
 228 MAIN STREET, WINNIPEG.

LIVE OR DRESSED  
**HOGS**  
 WANTED  
 For which the highest price will be paid.  
 Correspondence Invited.  
**Manitoba Packing & Provision Co. (Ld.)**  
 WINNIPEG.

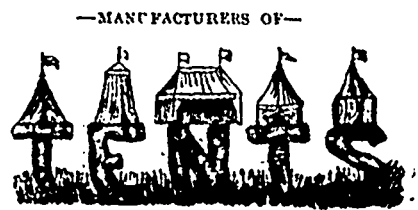
J. S. NORRIS. JAS. CARRUTHERS.  
**NOPPIS & Carruthers,**  
**FLOUR AND GRAIN**  
**COMMISSION MERCHANTS.**

Produce Exchange Bu. Bldg.:  
 100 R. SCOTT & COLBORNE STS., TORONTO. CORN EXCHANGE,  
 MONTREAL.  
 Liberal advances made on consignments of  
 Flour, Wheat, Barley and Oats.  
 CORRESPONDENCE SOLICITED.

**PROVISIONS!**  
 ASK YOUR GROCER FOR GRIFFIN'S  
 Sugar Cured Hams, Breakfast Bacon,  
 Pure Pork Sausage, Spiced Rolls,  
 Prime Kettle Rendered Lard,  
 —ALSO—  
 LONG CLEAR BACON, BARREL PORK,  
 BUTTER, EGGS AND CHEESE,  
 AT AS LOW PRICES TO THE TRADE AS  
**J. Y. Griffin & Co.**  
 Packers and Provision Merchants,  
 WINNIPEG.

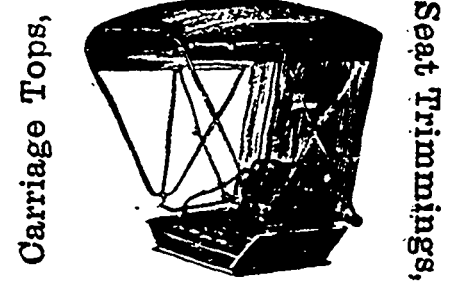
Cosmopolitan Hotel,  
 MEDICINE HAT, - - - ASSA,  
 Headquarters for commercial travellers and tourists  
 Good sample rooms and clean and comfortable sleeping  
 apartments. THOMAS BASSETT, Proprietor.

**BROMLEY & CO.**



**Awnings, Mattresses, Etc.**  
 17 McWILLIAM STREET WEST,  
 WINNIPEG.

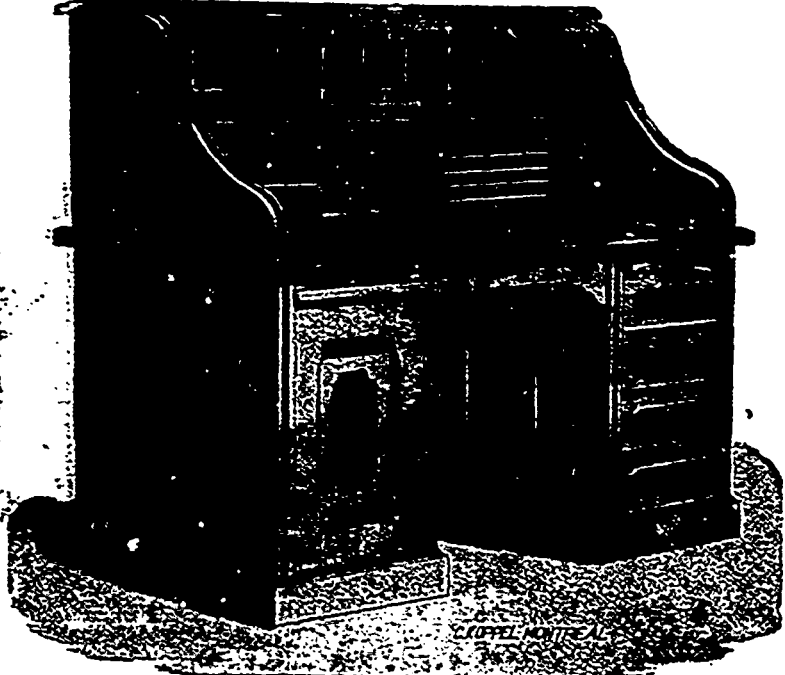
**A. C. McRAE,**  
 —MANUFACTURER OF—



AND WHOLESALE DEALER IN  
**TRIMMING GOODS.**  
 (Corner King and James Streets,  
 WINNIPEG.

**THE S & COY,**  
**MONTREAL,**

—MANUFACTURERS OF—  
 CYLINDER,  
 ROLL TOP,  
 PEDESTAL,  
 PARLOR  
**DESKS**



AGENTS FOR MANITOBA:  
**Scott & Leslie,**  
 WINNIPEG.



MEN'S, BOYS' and YOUTH'S CLOTHING  
CHILDREN'S CLOTHING a speciality.



Our Samples for the Spring Season 1889,  
are now on view at 35 Lombard St., Winnipeg

**H. SHOREY and CO., WHOLESALE CLOTHIERS,**  
1866-1868 and 1870 Notre Dame and 36, 38, 40 and 42 St. Henry St., MONTREAL.

**J. & A. Clearihue,**  
COMMISSION MERCHANTS  
AND MANUFACTURERS AGENTS,  
Dealers in—  
**Fruits and Produce**  
YATES ST., VICTORIA, B.C.

Representing D. Richards, Manufacturer of Laundry  
and J. Tollef Soap's, Woodstock, Ontario; Jas. Hall & Co  
manufacturers and dealers in Gloves, Mitts and Moc  
cases Brockville.  
Consignments received in all Lines Correspondence Solicited.

**Schmidt & Buss,**  
—WHOLESALE DEALERS IN—  
BULK AND CAN  
**OYSTERS**  
FRESH AND SALT FISH, POULTRY, &c.  
Cor. Main and Logan Streets,  
HIGGINS' BLOCK, WINNIPEG  
Send for Price List

**Williamson, White & Co.,**  
23 WELLINGTON STREET WEST,  
TORONTO.  
IMPORTERS OF FINE WOOLLENS  
AND TAILORS' TRIMMINGS.  
Samples on application.

ECCENE, WATER WHITE, SUNLIGHT  
**STANDARD OIL COMPANY,**  
(CLEVELAND, OHIO)  
Manitoba & Northwest Department, Winnipeg.  
**ILLUMINATING OILS LUBRICATING**  
GASOLINE, AXLE GREASE, CANDLES, and all  
PRODUCTS OF AMERICAN PETROLEUM.  
Our stock here embraces all the Manufactures of the  
Standard Oil Company. Correspondence solicited.  
W. P. JOHNSON Mgr., Office 343 Main St.  
CAPITOL CYLINDER ELDERADO CHALLENGE  
ENGINE MACHINERY

**THE DRIARD,**  
VICTORIA, B.C.

The only strictly first-class hotel  
in the province.

**LELAND HOUSE, VANCOUVER,**  
British Columbia.  
The leading commercial hotel of the city.  
Directly above the C.P.R. Station and Steam-  
boat wharf. All modern improvements. Sample  
rooms for travellers.  
J. E. INSLEY, Mgr. W.M. PROUT, Prop.

**Fish! Fish! Fish!**  
HEADQUARTERS FOR FISH—IN STOCK AND TO ARRIVE.  
Boneless Cod in 5, 25 and 40 lb. boxes.  
Boneless Fish in 5, 25 and 40 lb. boxes.  
Finnan Haddies in 30 and 50 lb. boxes.  
Labrador Herring in bbls. and half bbls.  
Bloaters, Smoked Herring, Fresh Codfish,  
Halibut, Smelts, Tommy Cod, &c.  
**EGGS, BUTTER, CHEESE, FRUIT, ETC.**  
Orders, Consignments and Correspondence  
Solicited.

**JOSEPH CARMAN,**  
WINNIPEG.

**H. S. Howland, Sons & Co.**  
WHOLESALE  
**HARDWARE.**

Full lines of Rodgers' Butlers', Westenhelm's, Ask-  
ham's, Fenton's, Cook's and other makers TABLE AND  
POCKET CUTLERY.  
Warnock's and Hixford's AXES. Disston's and Shurley  
& Putrich's SAWS. Yale and Peterboro' LOCKS.  
Black Diamond FILES. Heller Bros' HORSE RASPS  
and BLACK-MITH'S TOOLS, etc., etc.  
Orders by mail and telegraph promptly filled at lowest  
current prices.  
WAREHOUSES:  
37 Front Street West, TORONTO.  
REPRESENTED BY  
T. G. DEXTER, P.O. Box 1274, WINNIPEG.

**A. W. E. THOMPSON,**  
Manufacturers' Agent.

REPRESENTING:  
THE GENDRON MANUFACTURING Co.—Child-  
ren's Carriages, Velocipedes, &c., Toronto,  
Ont.  
KRUG BROS. & Co.—Furniture, Chesley, Ont.  
CANADA WIRE MATTRESS Co.—Toronto, Ont.  
D. HIBNER & Co.—Parlor Frames, Rockers,  
etc., Berlin, Ont.  
OFFICE  
63 King Street, - WINNIPEG  
P.O. Box 698.

**J. E. McGARVIN & CO.**  
—MANUFACTURERS OF FIRST-CLASS—  
**TRUNKS,**  
Travelling Bags, Etc  
BERLIN, - ONT.  
SAMPLE ROOMS:  
63 KING ST., WINNIPEG  
A. W. E. THOMPSON, Representative.  
Price Lists and Quotations on Application.



**HOT AIR FURNACES**  
Estimates given on application  
**THE E. & C. GURNEY CO.,**  
OFFICE: Cor. Alexander and Princess Sts.,  
WINNIPEG.



**THE CLARENDON.**  
The only FIRST CLASS solid brick hotel in  
Winnipeg. Elegant Dining Room.  
TERMS MODERATE.  
BENNETT & CO., PROPRIETORS.

**Business East.  
ONTARIO.**

John Oulcott, hotel, Eglinton, is dead.  
 R. O'Neil, hotel, London, is out of business.  
 F. W. Radcliff, jobber, Toronto, has assigned.  
 Hicks & Co., hotel, Colborne, damaged by fire.  
 A. G. Bedford, grocer, Chatham, is selling out.  
 J. Coxwoth, hotelkeeper, Hensall, has sold out.  
 Chris. McKenzie, grocer, Petrolia, has sold out.  
 C. W. Rescoby, baker, Georgetown, has assigned.  
 A. G. Crysdale, confectioner, Toronto, has assigned.  
 Adam Ballantine, general store, Arthur, has assigned.  
 Tobias Culp, fruit grower, Tp. Louth, has assigned.  
 Babson Bros., dist. mill, Waterdown, have assigned.  
 Hy. Robison, confectioner, Ridgetown, has sold out.  
 Neil McCoy, grocer, Chatham, is out of business.  
 Korman Brewing Co., Toronto, partially burned out.  
 Harkness & Co., drugs, London, G. W. Harkness is dead.  
 W. J. Wright, implement agent, Greenock, has assigned.  
 A. M. Anderson, general store, Williamsford, has sold out.  
 Snider & Hamilton, livery, etc., Toronto, have dissolved.  
 Crandall Bros., general store, Colborne, was damaged by fire.  
 J. D. Armstrong, drugs, Toronto, was sold out by the sheriff.  
 Wm. Thompson & Co., wholesale hardware, Toronto, have dissolved.  
 F. Cooper, gents' furnishings, Toronto, has had his stock damaged by fire.  
 Chatham Watch, Clock and Jewelry Co.; Chatham, are closing out their business.

**QUEBEC.**

Jos. Hatch, hotel, Montreal, has assigned.  
 S. Veronneau, general store, Valcourt, has assigned.  
 Drapeau, Saygnac & Co., plumbers, Montreal have dissolved.

**NOVA SCOTIA.**

John Eab, groceries, etc., Halifax, is dead.  
 W. Wallace, tailor, Wolfville, has assigned.  
 William Miller, tinware, Halifax, has sold out.  
 T. P. Conners & Co., tailors, Halifax, have dissolved.  
 Michael McPherson, general store, Springhill, has assigned.

**NEW BRUNSWICK.**

Chas. McManis, hotel, Buctouche, has assigned.  
 F. H. Searle, general storekeeper, Chatham, is away.  
 J. L. Stevens, confectioner, Muncion, has assigned.  
 J. J. Noonan, men's furnishings, Chatham, has assigned.  
 H. S. Copp, saw mill—West'd Co., Brooklyn, burned out.  
 G. V. Hammond, general store and lumber, St. Leonards, has assigned.

**Coffee.**

Coffee is threatened with a rival. In the island of Reunion is a plant known as the wild

orange, which produces a fruit green at first, afterwards bluish, and veiging into purple as it ripens. This has been tested and found to make a boverage in every way equal to coffee, and at a much lower price. The product is called "Mussaenda," and can be used alone or mixed with pure coffee. It is announced that 24,000 acres of this plant are now being cultivated. It is most likely, however, that chicory more than coffee will suffer from the introduction of "Mussaenda." Ex.

**Chemicals and Dyestuffs.**

Quotations at Montreal for these commodities were given as follows last week.—

Bleaching powder	\$0 00	(a \$2 25
Bicarb soda	1 75	(a 1 90
Sal soda	0 95	(a 1 00
Caustic soda	2 00	(a 2 25
Soda ash	1 30	(a 1 50
Chlorate potash	0 22	(a 0 25
Alum	1 50	(a 1 75
Copperas	0 80	(a 0 90
Sulphur flour	2 25	(a 2 50
Sulphur roll	1 90	(a 2 00
Sulphate of copper	6 75	(a 7 00
White sugar of lead	0 08	(a 0 12
Brown sugar of lead	0 07	(a 0 10
Bich. potash	0 09½	(a 0 10
Bich. soda	0 07½	(a 0 08
Logwood, per 100 lbs	2 00	(a 2 25
Sumac, Sicilian	65 00	(a 75 00
Pruss potash, yellow	0 22	(a 0 25
Cutch	0 07½	(a 0 08½
Gambier	0 06½	(a 0 07½
Madras indigo	0 60	(a 0 80

**Grain and Milling**

Lake freights on wheat from Chicago to Buffalo last week were quoted at about 2½ cts., corn 2½ cents.

D. Bawlf, grain dealer, Winnipeg, has purchased the retail grain and feed business of N. Bawlf, also of Winnipeg.

No grain charters have yet been made at Duluth this season. Opening charters will be at about 3½c. Not much wheat is expected to be shipped before June 1.

Ritchie & Newcomb will make over the stone grist mill at Gladstone, Man., to a roller mill, with a capacity of 50 barrels. They are being aided in the undertaking by private subscriptions.

It is reported that another hitch has arisen in the title of the property whereon Hastings Bros. & Co. intend building their mill at Port Arthur. A squatter is on the ground and refuses to vacate.

Edmonton Bulletin.—The Sturgeon river grist and saw mill, belonging to the Roman Catholic mission at St. Albert, northern Alberta, was burned on March 21th. The fire started on the north side of the river, burning 1:00 saw logs which had been brought out from the Egg lake timber limit during the winter. It then crossed the river to the mill, which it destroyed with the contents and about 300,000 feet of sawn lumber. The outbuildings of the mill were also destroyed, the dwelling house alone escaping. A quantity of grain and flour in the grist mill and the saws, planer, edger,

etc., in the saw mill, were destroyed. The loss is variously estimated at \$20,000 to \$40,000. It is not likely that the mill will be rebuilt.

Dr. Harrison, banker, of Neepawa, Man., has made a proposition to build a flour mill at that place. According to the Neepawa Register, he offers to build a mill of 125 barrels capacity, with storage attached, for a loan of \$10,000; half the amount to be repaid in five years and the balance in ten years without interest. The amount to be secured to the municipalities by a first mortgage on the property and by an assignment to them of an insurance policy for the amount.

E. P. Allis, whose death was announced in THE COMMERCIAL last week, was well known, at least by reputation, especially to millers. He embarked in the foundry business in Milwaukee in 1861, on a small scale, and has been most successful in building up an immense concern, which now employs 2,000 men. The output of the establishment last year was valued at \$3,000,000. Flour and saw mill machinery are the special features of the works. The business will be carried on by his sons and others. Mr. Allis carried life insurance policies to the amount of \$461,000, upon which the annual premiums amounted \$35,000.

THE Western Traveller is the latest thing in the journalistic line for Manitoba. The Traveller will be distributed free on all trains on the main line and branches of the C. P. R., daily, and it will not be published as a regular journal, at a fixed subscription rate. It is therefore a new departure in journalism here. Though circulated free, the first issue of the paper, which appeared last week, contained a liberal amount of interesting reading matter. The advertising columns were also well represented. The Traveller is in good hands, and will no doubt succeed. The head office of the paper is at 471 Main Street, Winnipeg.

Two brothers named Stewart were made to pay \$130 extra freight on a car which arrived recently at Neepawa, Man.,. It was billed as emigrants' effects but contained some new articles. It is known to be quite a common practice for immigrants from the east to bring new goods with them for sale here this is not strictly in accordance with the regulations, as they get a lower rate on immigrants effects than on general merchandise. A good many new settlers bring goods for sale along with their effects, with the idea that they can sell the goods at a profit here, and thus help to pay expenses. However it is not always an easy matter to dispose of the goods here at a profit, and sometimes settlers have netted a loss on goods brought in.

**PUBLISHING!**

**Warwick & Sons,**

Publishers, Wholesale Booksellers and Stationers. Printers and Binders to the Ontario Government.

**Toronto, - Ontario.**

Printing rooms large, well organized and completely fitted up. New and improved machinery and appliances. Every class of publishing work executed with neatness and dispatch. Book work completed in all details on our own premises.

ESTIMATES SENT ON APPLICATION.

### The Travelling Men.

Fred. T. Dutlor, who has represented a Toronto house in the West, is now with The Copp, Clark Company.

J. G. McLean, a well known traveller for a Winipeg house, left on Monday for St. Paul to accept a situation with Beaupre, Keogh & Davis.

W. S. Al'oy, the well known traveller for the W. E. Sanford Co., who went east a while ago to get married, in which mission it is understood he was eminently successful, returned to Winipeg last week.

The first quarterly meeting for 1889 of the Northwest Commercial Travellers' Association was held recently at Winipeg. The object of calling the members together was for the election of two additional directors, according to a change made in the constitution at the 1889 annual meeting. The result was the unanimous election of Fred. Chilcott and Jas. C. McLean to fill the positions.

A chippy young drummer from the East on his first trip to Western Canada, was greatly disgusted and kicked vigorously on finding that at the best hotels in Winipeg, fish is put on the table with the scales adhering. A party seated at the table remarked that in this country we never bother scaling fish for the table, and informed the chippy drummer that if he didn't get anything worse than fish with the scales on, in this country, he would fare well.

A shoe drummer for a New York house, says an exchange, called on a merchant and handed him a picture of his betrothed instead of his business card, saying he represented that establishment. The merchant examined it carefully, remarked that it was a fine establishment, and returned it to the astonished man, with a hope that he would soon be admitted into partnership. The last seen of the drummer and merchant they were discussing the evils of prohibition, at the bar-room around the corner, at the drummer's expense.

The travelling man does more than any other class of people towards the building up or ruining the trade of a hotel. Having his expenses paid, the average drummer lives like a lord, and nothing is too good for him. You find him on every train, in every depot and always at the best hotel. He thinks as much of a good hotel as a Mahometan does of his creed, and will never tire in telling his friends and travelling acquaintances where he got it. In this way they are great advertisers, and the fame of a caravansary, whether good or bad, is carried from one side of the country to the other. The drummer has got to be a bonanza to the hotel-keeper, and many houses could not exist without them.

### Trade and General News.

The Quebec Shoe company have formally assigned for the benefit of the creditors, and a winding up order has been applied for.

The demand for maple syrup at Montreal last week was fair and the market steady. New stock sold at 80 to 90c, with old at 50 to 70c per gallon as to quality. There was a fair enquiry for new maple sugar at 8 to 9c, with old at 6 to 7c per lb.

Haggart's postal bills has passed through committee at Ottawa. As the bill now stands drop letters will be two cents instead of one, the registration of valuable letters will be compulsory and postage fixed by order in-council instead of ten cents, as originally proposed by the Post-master-General, and newspapers and periodicals issued monthly or more frequently will be free of postage.

At a special meeting of the shareholders of the Magog Textile and Print Company, it was decided to accept the offer of the Hochelaga Cotton Co., equal to \$370,000, for the mills and other property at Magog. The raw material on hand is also to be taken over at a valuation, and the manufactured stock remaining over to be disposed of by the Print company. The sum thus realized will enable the Magog company to pay off all their obligations, and it is hoped to return about 20 cents on the dollar to the shareholders.

"Silken Threads," a novel, by the author of "Mr. and Mrs. Morton," is one of the latest publications from the press of J. Theo. Robinson, publisher of Montreal. It is a detective story very well written and full of interest. The unravelling of the mystery concerning the death under strange circumstances, of a young society man, who is apparently without enemies, chains the attention of the reader from beginning to end. It is probably the best detective story ever written. Every body should read it. To be had from all booksellers.

We have received a copy of "Mr. Naydian's Family Circle," a new work by the author of "Lusor Lustratus." This book is from the press of J. Theo. Robinson, publisher, of Montreal, who is doing a great deal to supply the Canadian public with good reading matter at low prices. His books are neatly and clearly printed, and are now kept by all bookstores. Of this new work the Montreal Gazette says: "The book itself has something of a mystery about it, which every one will take a delight in unravelling. Nearly every paragraph in it has a little problem of its own; while the whole story has a moral which everybody—not excepting our politicians—will not be slow to appreciate. What can be more interesting to readers than the story of themselves? And if we mistake not, the book contains somebody's story, though to say more would perhaps be to let our politicians, young and old, know what it is all about. Let us recommend all readers to buy the book, and solve the problem for themselves."

C. W. GRAHAM, livery, Winipeg, is selling out.

A CORRESPONDENT writes that a second hardware store is likely to be started at Treherne, Man. One store in this line is probably all that could be made to pay in the place yet.

SEVERAL noblemen in England are in the habit of giving special orders to makers in Virginia for their supply of smoking tobacco. There is no doubt that by that means they get the very best tobacco to be had, but it costs them \$2 a pound. The working men of Canada are smoking the very same quality of tobacco at 60 cents a pound, and it is known to them by the name of "Myrtle Navy."

A DOMINION land office has been opened at Saltcoats, the western terminus of the Manitoba Northwestern railway.

## S. F. McKINNON & CO.

—IMPORTERS OF—

Millinery Goods.

Fancy Dry Goods,  
Mantles, Silks, etc.  
Corner Wellington and Jordan Streets  
TORONTO.

2 Fountain Court, Aldermanbury, London, Eng.

J. F. EBY.

HUGH BLAIN.

## Eby, Blain & Co.

### WHOLESALE GROCERS,

COR. FRONT AND SCOTT STS.,  
TORONTO.

Represented in Manitoba and the Northwest Territories by JAMES DAWLER, 130 Donald Street, WINNIPEG.



PATENT SASKATCHEWAN.

## BUFFALO ROBE

The most Perfect Substitute for the Real Buffalo Skin ever Produced.

WARM, HANDSOME AND DURABLE.

—SOLD ONLY IN CANADA BY—

W. H. Storey & Son,  
GLOVE MANUFACTURERS,  
ACTON, Ont.

Samples and Price Lists Sent on Application.

## LYMAN, KNOX & CO.

—IMPORTERS AND—

## Wholesale Druggists,

374 and 376 ST. PAUL STREET,

## MONTREAL

## Turnbull & McManus,

—WHOLESALE AND RETAIL—

## DOORS, SASH, BLINDS,

Mouldings, Stair Work,  
Building Paper,  
etc., etc.

Opposite C.P.R. Depot,  
WINNIPEG.

# BROWN BROS.,

Wholesale and Manufacturing  
**STATIONERS,**  
 64 to 68 KING STREET EAST,  
 TORONTO.

**SPECIALTIES.**

Account Books Paper—all kinds  
 Office Supplies Stationery  
 Wallets, Pocket Books  
 Ladies Hand Satchels  
 Pocket and Office Dairies  
 Leather Goods Binders Materials  
 Printers Supplies

## CAUTION!

EACH PLUG OF THE

# Myrtle Navy

IS MARKED

# T. & B.

IN BRONZE LETTER.

NONE OTHER IS GENUINE.

Jos. Schilitz Brewing Co's  
 MILWAUKEE EXPORT BOTTLED  
 AND DRAUGHT

# LAGER!

PERMITS FILLED

GEO. YELIE, Agent for Manitoba and the Northwest,  
 WINNIPEG.

# DICK, BAYNING & CO

MANUFACTURERS OF

Lumber, Shingles and Lath,  
 DOORS AND SASH.

MILLS AT KERWATIN. OFFICE: OPPOSITE C.P.R.  
 PASSENGER DEPOT, WINNIPEG.

Toronto Hide & Wool Co

Wholesale Dealers in

# HIDES!

SHEEPSKINS AND WOOL

**JOHN HALLAM**  
 88 Princess St., WINNIPEG

83 and 85 Front Street East, TORONTO.  
 PROPRIETOR.

We will be in the market this season  
 as usual for all classes of Wool, and  
 are prepared to pay the highest mar-  
 ket prices.

# E. A. SMALL & CO.,

MANUFACTURERS OF

# CLOTHING

WHOLESALE

203 and 210  
 McGILL STREET, MONTREAL

SAMPLE ROOMS:

30 AND 32 McINTYRE BLOCK,  
 WINNIPEG.

# COCHRANE, CASSILS & CO.

## Wholesale Boots and Shoes

Cor. Craig & St. Francis Xavier Sts.,  
 MONTREAL.  
 Manitoba and N.W.T. Agency: J. M. MACDONALD,  
 McIntyre Block, WINNIPEG.  
 British Columbia Branch: WM SKENE, Van Hous-  
 Block, VANCOUVER

# ROYAL SOAP MFG. CO.

WINNIPEG.

BRANDS: Hardwater, Dominion, Linen, Ivorine  
 and Electric, also a full line of Toilet Soaps.

Of All Wholesale Dealers

# W. R. Johnston & Co.

(Late Livingston, Johnston & Co.)

WHOLESALE MANUFACTURERS  
**READY-MADE**

# CLOTHING

44 BAY STREET, TORONTO.

EVERY VARIETY OF  
 Fainters Brushes,  
 Artist Brushes,  
 Household Brushes,  
 Stable Brushes,  
 Toilet Brushes,

—MANUFACTURED BY—

Chas. Boeckh & Sons,  
 TORONTO.

All our Brushes are branded **BOECKH**  
 to distinguish them from inferior imitations  
 and as a guarantee of their quality.

# STRANG & CO.

Wishart Block, Market St. East,

# WHOLESALE GROCERS

AND DEALERS IN

Provisions, Wines and Liquors,  
 WINNIPEG.

# W. E. SANFORD M'FG CO., Ltd.

MANUFACTURERS OF

# CLOTHING

45 to 49 King St., Albert Street.

HAMILTON & WINNIPEG.



## Home Production

WE MANUFACTURE

**BARB WIRE,**  
 PLAIN TWISTED WIRE, WITHOUT  
 BARS  
 And are Agents for the  
**Woven Wire Fencing.**

We are in a position to fill all orders promptly.  
 Ours is the only wire manufactured in the Dominion of  
 Canada on which is found the GENUINE LOCK BARB  
 A personal inspection will convince you of this fact. Qua-  
 lity of wire the best ENGLISH BESSEMER STEEL  
 Every pound guaranteed.

Manitoba Wire Company

# OGILVIE MILLING CO.

Mill at Point Douglas.

Capacity - - - 1000 Barrels per day.

OFFICE:—Corner King and  
 Alexander Streets, Winnipeg.

A Full Stock of Patent Hungarian, Strong  
 Bakers' and Spring Extra Flour; Oatmeal, Pot  
 and Pearl Barley, Graham Flour, Cracked  
 Wheat, Bran, Shorts, Ground Feed, Oats,  
 Barley.  
 Wheat buyers at all C.P.R. Shipping Stations

# THE QUEEN'S LAUNDRY BAR.

ASK FOR IT, AND TAKE NO OTHER.  
 BEWARE OF IMITATIONS.  
 Trade Mark. Made by THE ALBERT TOILET SOAP Co.  
 ADDRESS: ALFRED SAVAGE & SON, MONTREAL.

W. STEVENS. J. H. GLASS.

# Stevens, Glass & Clarke,

(Successors to C. S. Hyman & Co.)

MANUFACTURERS AND WHOLESALE DEALERS IN

## EXTRA FINE.

FINE AND MEDIUM GRADES

—OF—

# BOOTS & SHOES

LONDON, Ont.

Mr. Glass will as usual call upon the trade in Manitoba,  
 Northwest Territories and British Columbia. Orders by  
 letter solicited. Send for sample dozen.

JOHN CLARKE. O. STEVENS.

Have you received a Copy  
of our **POCKET MEMO**  
Book? If not apply  
to us for one,

**STOBART, SONS & CO.**

WHOLESALE

**Dry Goods**

WINNIPEG, Manitoba, and LONDON, England.

**THE LANGHAM HOTEL,**  
BRANDON, - MANITOBA.

Situated on 12th Street. Fr. c Bus meets all trains.  
Commercial Sample Rooms. Newly furnished throughout.  
Every room heated by steam.

JAS. W. NEALON, Prop. A. W. LEFLAR, Man'g'r.

**ANGLO - AMERICAN HOTEL ! !**  
GRETNA, - - MAN.

J. D. PIERSON well known to the commercial  
trade throughout the west, has lately taken charge  
of this house and fitted it up with Sample  
Rooms and every convenience for  
Commercial Travellers

**HILLIARD HOUSE**  
RAT PORTAGE.

The Palace Hotel of the Northwest, Ontario.  
Newly and elegantly furnished throughout.  
The only Commercial House in the district.  
First class Sample Room. Terms Reasonable.

LOUIS HILLIARD, PROPRIETOR.

Every Attention paid to  
Guests.  
MONTREAL.



ST. LAWRENCE HALL  
HENRY HOGAN.

First-class in every respect  
Appointments Perfect,  
Graduated Prices.

**Thouret, Fitzgibbon & Co.**

MONTREAL.

Agents for English, German and French  
Manufacturers of

Dress Goods, Underclothing, Embroideries,  
Men's Furnishings, Silks, Velvets, Plushes,  
Hosiery, Knitted Goods, Gloves, Linens, Laces,  
Corsets, etc., etc.

Worsted Coatings, Tailors' Linings, Trimming,  
Suits, Gaiters, etc.

P.O.B. IN MONTREAL.

Represented by H. A. DRISCOLL & CO.,  
Northwest, British Columbia and Winnipeg.

**The Canada Rubber Co'y**  
OF MONTREAL.

Manufacturers of Rubber Shoes, Felt Boots,  
Rubber Packing, Hose, etc.

WORKS: Papineau Square, Montreal  
WAREHOUSE: 335 St. Paul St.

Branch: Cor. Front & Yonge Sts., Toronto.

**J. F. McLAUGHLIN & BRO.,**

WHOLESALE

**Grain, Flour and Feed**

MERCHANTS.

SEND SAMPLES AND PRICES  
TORONTO, - ONT.

**MUNROE & CO.,**

Wholesale Dealers in

Wines, Liquors and Cigars

OF THE BEST BRANDS

9th STREET, - BRANDON.

**Wm. Ferguson,**

WHOLESALE

**WINES - LIQUORS AND CIGARS**

Permit Orders Promptly Executed

8th Street, - - Brandon



MANITOBA 4-POINT LOCK  
**BARB STEEL FENCE WIRE.**  
Of the Best Quality.

**Branded "Buffalo"**

MANUFACTURED ONLY BY THE

**Canada Wire Company**

H. R. IVES, President and Manager,

MONTREAL.

**Grant & Horn,**

PRODUCE  
AND

Commission Merchants,  
56 Princess Street, WINNIPEG

EXPORTERS

Of Flour, Butter, Eggs and Cheese.  
Always carry in Stock

**BAGS**

For Flour, Bran, Oats, etc.—Jute and Cotton

**SALT**

(Canadian and Liverpool)

Frost Proof and Cold Storage.

CONSIGNMENTS SOLICITED.

**DOLL**

W. F.

WHOLESALE JEWELER

Watches, Diamonds, Clocks, Spectacles,  
Gold-headed Canes, Silver-plate, Watch  
Material, Tools, etc., etc.

525 Main St., WINNIPEG.

S. R. PARSONS. HENRY BELL. W. B. HAZLE

**PARSONS, BELL & CO.,**

**Wholesale Paper Dealers**

AND  
GENERAL STATIONERS.

AGENTS

Canada Paper Company,  
Manufacturers Printing, Wrapping & Writing Paper  
&c., Montreal and Windsor Mills, Quebec.

Alex. Pirie & Sons,  
Manufacturers Fine Stationery, Aberdeen, Scotland.

M. Scamton & Co.,  
Manufacturers Wall Papers, Toronto.

GERRIE BLOCK, PRINCESS STREET,  
WINNIPEG.

**McALPINE TOBACCO CO.**

TRY OUR

**"SILVER ASH"**

Out Smoking.

A Strong, Mellow and Lasting Smoke in  
10 CENT PACKAGES.

—ALSO OUR—

**"Standard Kentucky"**

FINE CUT CHEWING

The Superior of any Cut Chewing Tobacco in  
Canada.

WORKS: NEW YORK CITY, AND  
ESPLANADE, TORONTO.

### Dairy Matters.

Major Boulton and other dairymen have been urging upon the Dominion Government the advisability of encouraging dairying in the West.

Satisfactory progress is being made with the scheme to establish a cheese factory at Wapella, Assa. F. T. Lowe is the secretary of the company, which will probably be incorporated.

The Pheasant Forks Cheese and Butter Co., (Limited), is applying for incorporation. The members of the company, are residents of the Primitive Methodist Colony, located north of Wolsley, Assa.

Governor Schultz, of Manitoba, will establish a creamery at once in the old mill on Park's creek, near Parkdale, on the Selkirk branch of the C. P. R., north of Winnipeg. Jas. Taylor, of Winnipeg, will have charge of the factory.

The annual general meeting of the shareholders in the Grenfell, Assa., cheese factory was held on the 26th of March, when the directors of last year were unanimously re-elected. The report stated that upwards of 60,000 pounds of cheese were made during the last season, the great bulk of which found a market on the Pacific coast. B. P. Richardson was appointed president, and N. V. Francis secretary for this season.

In the house at Ottawa last week Mr. Vanasse asked whether the Government were aware that certain cheese dealers in the United States were in the habit of marking on cheese exported by them to England, via Montreal, the words "Canadian products," greatly to the detriment of the real Canadian article in the English markets, and whether the Government propose to adopt means to put an end to this fraud, which involves consequences greatly prejudicial to the Canadian producers. Sir John in reply said that the matter had already been brought to his attention, and the only solution he saw was to make the offense a penal one.

### Insurance Briefs.

Plans for a new city hall and fire hall, for Brandon, Man., have been prepared.

A public meeting to arrange for the organization of fire brigades will be held at Kamloops, B. C.

J. A. Yeomans, late representative in Winnipeg of the Confederation Life, has located in St. Paul.

A society has been organized in Denmark under the name of the "Celibacy Assurance Society," its object being to provide for the women who either cannot or will not provide themselves with a husband. The premiums, which are on various scales, begin at the age of 13 years and end at 40, a period at which it is supposed most of the members will have abandoned any thought of marriage. Such being the case, the women receive an annuity for life. If, however, she marries at any time after forty, she forfeits all her claims.

### The Shoes She Wanted.

At the shoe counter—Salesman—"That's a perfect fit, lady."

Shopper—"Yes, they feel quite comfortable."

(Slips on shoes and looks at the soles). "Mercy! they are a mile too big! Why, they are fives, and I never wear anything larger than threes!"

Salesman—"These are threes, lady; but you see there's been such a demand for them we've been obliged to mark them up."

Shopper—"Oh! well I guess I'll take them. I thought they couldn't be fives."—*Boston Transcript.*

FREIGHT from Calgary to Edmonton is 2 to 2½ cents per pound.

E. H. WILLIAMS has opened in the hardware and tinware lines at Binscarth, Man.

Mrs. LUCAS has opened a millinery and dress-making establishment at Emerson, Man.

J. H. BROCK, of Winnipeg, has been appointed liquidator of the Bell Farming Company.

W. J. RICHARDSON, general merchant, Birtle, Man., has assigned in trust to S. A. D. Bertrand, official assignee.

C GALLAGHER, of Gallagher & McGregor, butchers, Battleford, bought a number of cattle in the Prince Albert district recently.

THE Brandon Sun says that a tailoring establishment in that city has turned out over \$2,000 worth of clothing per month for the last three months.

CALGARY merchants have agreed to close their places of business at 6.30 o'clock, Saturdays excepted. This is a good example to other western towns.

S. LARURE and M. Picard, of Edmonton, Alberta, have formed a partnership for the purpose of carrying on a general store business at that place. They will open shortly.

HENDERSON'S directory of Manitoba, the Territories and British Columbia, for 1889, has been issued. It forms a bulky volume, and is an indispensable work for every business office.

PORTAGE LA PRAIRIE, Man., comes to the front in the telephone controversy, claiming four telephones per 100 of population, which is about equal to and perhaps a shade better than Winnipeg.

A GENERAL store has been opened at Cash City, Red Deer district, north of Calgary, by L. M. Sage. A post office will be opened as soon as a suitable name for the place is selected, Cash City being objected to by the department.

A MASS meeting is stalked of at Prince Albert, to discuss the railway question. This fine district is badly in need of railway communication. The settlement has now reached a point that a railway is necessary, if further progress is to be made.

THE British Columbia Government has gained a great victory in its suit with the Dominion, concerning the ownership of the minerals in the C. P. Railway belt of the province. The province ceded to the Dominion a strip of land twenty miles wide on each side of the C. P. R. main line, in consideration of an annual grant from the Dominion to the province of \$10,000. The Dominion authorities later claimed the ownership of the minerals in this forty mile belt, which the province disputed. The Privy Council last week decided the case in favor of the province.

A MEETING of the license commissioners for the Winnipeg district was held last week and it was decided that no shop license should be granted, and that wholesale licenses would only be granted to persons conducting a wholesale liquor business.

It has been definitely decided that the Morris and Brandon branch of the Northern Pacific & Manitoba railway will run south of the Tiger Hills. It has not yet been decided whether or not the road will be extended into the Souris country this year.

THE following officers have been elected by the Medicine Hat board of trade, for the coming year:—President, H. S. Scatcherd; vice-president, M. Leonard; secretary-treasurer, Thos. Tweed; executive committee, Messrs. Yuill, McCuay, and Cochrane.

IN view of the contemplated visit to the West of Sir Charles Tupper and Hon. E. Dewdney, Minister of the Interior, the board of trade of Macleod, Alberta, has instructed its secretary to write to Sir Chas. Tupper and Hon. E. Dewdney, and invite them to visit that district.

THE following trade changes are reported from Neepawa, Man.:—Thos. McElougall, hardware, and John Crawford, grain, implement and lumber dealer, have formed a partnership. The hardware business will be moved from the village to the station.—J. A. Allan, baker and confectioner, has sold out to A. W. Carswell. Allan located at Winnipeg some time ago, and his business at Neepawa was managed by his wife.—S. Farrell, livery, has sold out to Wm. Davidson.

THE immigration agency at Medicine Hat, Assa, will be closed, and the buildings will be used for Mounted Police purposes, court house and jail. The Medicine Hat Times says:—We think the Government is acting unwisely in closing this office, as the need of an immigration agent has never been greater than it is now. At the present time a large number of immigrants just arrived from Europe are taking shelter in the sheds, and another party is expected to arrive in a few days. Mr. Sutherland, agent, will be transferred to Vancouver, B.C.

AT its last meeting the Winnipeg retail grocers' association voted unanimously in favor of early closing, and commencing on May 1st, the city grocery stores will be closed at 8 o'clock, Saturdays and the evenings before holidays excepted. The committee appointed to wait on the wholesale dealers and fruiterers regarding selling to consumers, reported that they had been favorably received by the parties interviewed. Some of the flour and feed-men as well as some of the grocers, have not yet been seen.

THE question of granting bonuses to the proposed new railway, is exciting great interest at Port Arthur and Fort William, and opinions appear to be considerably mixed on the subject. The company seem to be working for large bonuses from Port Arthur and the other municipalities in the district. The bonus question was discussed at length at a special meeting of the board of trade, but without any recommendations being made, owing to the diversified opinions held by the members.



### Trains Lighted by Electricity.

and heated by steam, are the latest improvements for the benefit of its patrons, adopted by the CHICAGO, MILWAUKEE & ST. PAUL RAILWAY. The vestibuled trains of this company, between St. Paul and Minneapolis, and Milwaukee and Chicago, are now equipped with the very finest sleeping cars ever turned out by the Pullman company. These cars contain twelve sections and a drawing room and smoking room; have three lavatories for ladies and three for gentlemen, supplied with hot and cold water. The cars are equipped with modern closets, and two of the sections in each car are draped to secure privacy when desired. The entire train is lighted by incandescent electric lights, enabling passengers to read the finest print in any part of the car without difficulty.

No such trains were ever before run in the Northwest, and they are well worthy the inspection of the public.

The prompt adoption of all improvements for the comfort and safety of the travelling public by this great company accounts for its high position in the estimation of the people, and gives it the bulk of their patronage, notwithstanding the advent of new lines into the field of competition.

**THESE VESTIBULED TRAINS** go in service May 15th.

### Chicago, St. Paul, Minneapolis & Omaha Ry

THE NORTHWESTERN LINE,

The best equipped line to

### CHICAGO, OMAHA AND KANSAS CITY.

The ONLY line to Chicago running Pullman and Wagner Vestibuled Trains.

These Vestibuled Trains are limited as to time but not limited as to number of passengers. All classes of Passengers carried, with separate apartments for each class, and NO EXTRA FARE.

Trains Eastward will run as follows: Leave Minneapolis 6:50 p.m.; St. Paul 7:30 p.m. Arrive Milwaukee 7:40 a.m.; Chicago 8:50 a.m.

The Sleeping Cars on these trains have been prepared especially for this service, and together with the Vestibuled Dining Cars, Coaches and Baggage Cars are the finest equipped trains of their class in the world.

TICKETS AT LOWEST RATES, and good on these Vestibuled Trains, can be secured at the following offices: St. Paul, 159 East Third Street; Minneapolis, 13 Nicollet House Block; Duluth, 112 West Superior Street; also at St. Paul and Minneapolis Union Depots and at offices of connecting lines. Sleeping car accommodation secured in advance.

NOTE—The above advertised time is the actual running time, and the motto of the Northwestern Line is "ALWAYS ON TIME."

E. W. WINTER, General Manager. F. B. CLARKE, General Traffic Manager. T. W. TEDSDALE, General Passenger Agent.

## Oklahoma Wide Open!

Now that the President has issued his proclamation declaring the Oklahoma lands open for the taking of claims, every one will be interested in knowing how they can reach this section with as little delay as possible, and the least expense.

### The Minneapolis & St. Louis Railway.

"ALBERT LEA ROUTE,"

in connection with the

Chicago, Kansas & Nebraska Railway, offers the only direct and feasible route to this section.

Only one change of cars between St. Paul or Minneapolis and Pound Creek, I. T., where connection are made with Stage line for Ft. Reno, Ft. Sill, and all interior points in the Oklahoma country.

For Rates, Time Table, etc., address your nearest R. R. Agent, or write to

S. F. BOYD,  
G. T. & P. A., M. & St. L. Ry.,  
Minneapolis.

## Northern Pacific & Manitoba Ry.

Daily except Sunday.	Express No. 51 Daily.	Central Standard Time.	Express No. 54 Daily.	Daily Ex. S.M.
1 25 p.m.	1 40 p.m.	STATIONS.		
1 10 p.m.	1 32 p.m.	Winnipeg L.	0:10 a.m.	4:00
12 4 p.m.	1 19 p.m.	Portage Junction.	0:3 a.m.	4:18
11 55 a.m.	12 47 p.m.	St. Norbert	0:37 a.m.	4:38
11 24 a.m.	12 27 p.m.	St. Agathe	10:19 a.m.	6:30
10 50 a.m.	12 08 p.m.	Silver Plains	10:15 a.m.	6:11
10 17 a.m.	11 55 a.m.	Morris	11:05 a.m.	6:42
9 40 a.m.	11 33 a.m.	St. Jean	11:25 a.m.	7:07
8 55 a.m.	11 00 a.m.	Letellier	11:45 a.m.	7:45
8 40 a.m.	10 50 a.m.	West Lynne	12:10 p.m.	8:30
		Lv. Pembina	12:35 p.m.	8:45
		Winnipeg Junction	8:50 p.m.	
		Minneapolis	0:35 a.m.	
		Lv. St. Paul	7:05 a.m.	
		Helena	4:00 p.m.	
		Garrison	0:35 p.m.	
		Spokane	0:5 a.m.	
		Portland	7:00 a.m.	
		Tacoma	0:45 a.m.	

P.M.	A.M.	STATIONS.	A.M.	P.M.	P.M.
2 30	8:00	St. Paul	7:30	3:00	7:35
P.M.	A.M.	Chicago	A.M.	P.M.	P.M.
10 30	7 00	Chicago	9:00	8:10	8:10
P.M.	P.M.	Detroit	P.M.	P.M.	A.M.
6 45	10 15	Detroit	7:15	10:45	6:10
A.M.	P.M.	Toronto	A.M.	P.M.	P.M.
9 10	9:05	Toronto	0:10	0:05	0:05
A.M.	P.M.	New York	A.M.	P.M.	P.M.
7 00	7:50	New York	7:30	8:50	8:50
A.M.	P.M.	Boston	A.M.	P.M.	P.M.
8 30	3:00	Boston	0:35	10:50	10:50
A.M.	P.M.	Montreal	P.M.	A.M.	P.M.
9 00	8:50	Montreal	8:15	8:15	8:15

Pullman Palace Sleeping Cars and Dining Cars on every train.  
J. M. GRAHAM, General Manager. H. SWINFORD, General Agent.

## N. W. C. & N. Co's Railway

### TIME TABLE.

Read Down.	STATIONS.	Read Up.
going EAST.		going WEST.
No. 1 Daily.		No. 2 Daily.
14 00 De	Letbridge	Ar 1 30
15 55	Woodpecker	23 45
16 50	Purple Springs	25 40
17 45 Ar	Grassy Lake	21 45
18 00 De	Cherry Creek	20 55
18 50	Winnifred	Do 20 00
20 00	Seven Persons	Ar 19 55
20 45	Dunnore	Do 18 45
22 10 Ar		Do 17 30

E. T. GALT, Manager, Letbridge. J. BAILEY, Supt., Letbridge.

## Manitoba and Northwestern Ry.

### CHANGE OF TIME.

PASS	Miles from Portage	STATIONS.	PASS
Tuesday			Monday
Thursday			Wednesday
Saturday			and Fridays
LEAVE		ARRIVE	
16 00		13 30	
+ 17 45	.35	+ 12 05	
18 45	.61	10 38	
19 45	.79	9 35	
20 50	.94	8 30	
21 30	1.15	8 00	
+ 22 30	1.33	+ 7 00	
23 30	1.65	5 55	
24 10	1.66	5 15	
24 40	1.80	7 15	
1 45	2.06	3 40	
ARRIVE		LEAVE	

\*Meals.  
\*Trains for Blinacarth leave Birtle Tuesdays and Saturdays only at 22:50; returning leave Blinacarth Wednesdays and Mondays only at 5:55. For Russel leave Birtle Tuesdays only at 22:50; returning leave Russel Wednesdays only at 5:15. For Langenburg and Saltcoats leave Birtle Saturdays only at 22:50; returning leave Saltcoats Mondays only at 3:40. For Rapid City leave Minnedosa Tuesdays Thursdays and Saturdays at 20:00; returning leave Rapid City Mondays, Wednesdays and Fridays at 8:30.

Above trains connect at Portage la Prairie with trains of the Canadian Pacific Railway to and from Winnipeg. For information as to Freight and Passenger Rates apply to A. Macdonald, Assistant Freight and Passenger Agent, Portage la Prairie, or to W. R. BAKER, General Superintendent.



# Northern Pacific

## And Manitoba Railway.

The Only Line Running

## A VESTIBULED TRAIN

Pullman Sleepers and Dining Cars  
From Winnipeg to the South.

### Through Tickets

—S.C.L.D.—

## TO ALL POINTS IN CANADA

Including British Columbia and the United States, making close connections at all Union Depots.

All Baggage destined for points in Canada Checked Through, doing away with Customs Troubles.

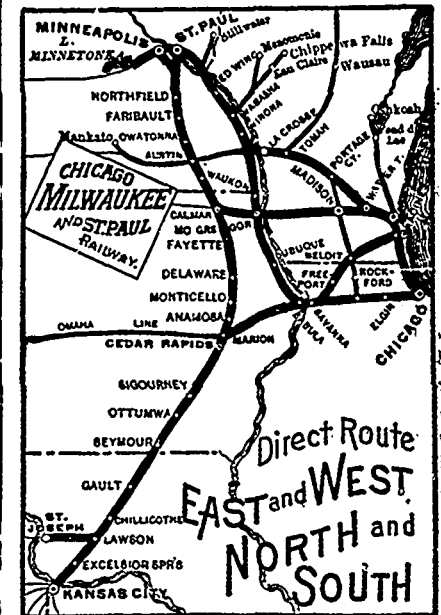
Ocean Passage and Berths Secured  
To all from Great Britain and Europe. All first-class Steamship Lines represented.

Round Trip Excursion Tickets  
To Pacific Coast, Good for Six Months.

For full information call on or write to any of the Company's Agents,

H. J. BELCH,  
City Ticket Agent, 285 Main St., Winnipeg.  
HERBERT SWINFORD,  
General Agent, 457 Main St., Winnipeg.  
J. M. GRAHAM, General Manager.

## Chicago, Milwaukee and St. Paul Railway.



For tickets, time tables, or any information in regard to the line, apply to any ticket agent in the Northwest, or to W. H. DIXON, Ass't Gen'l Pass. Agent, 162 East Third Street, St. Paul, Minn.

ROSWELL MILLER, General Manager. A. V. H. CARPENTER, Gen'l Pass. and Ticket Agt. J. F. TUCKER, Ass't Gen'l Manager. G. H. HEAFFORD, Ass't Gen'l Pass. and Ticket Agt. MILWAUKEE.