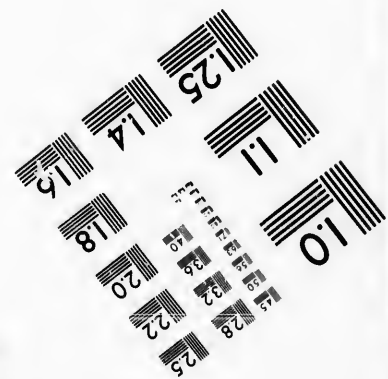
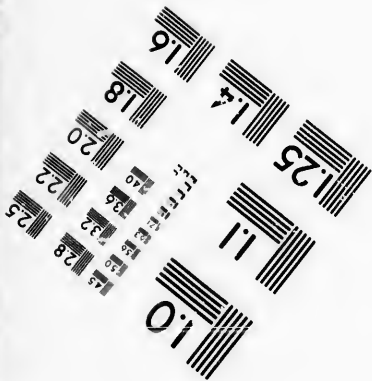
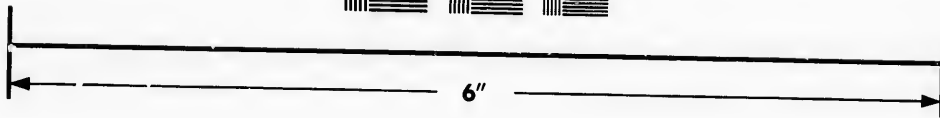
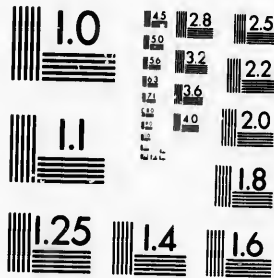


**IMAGE EVALUATION
TEST TARGET (MT-3)**



**Photographic
Sciences
Corporation**

23 WEST MAIN STREET
WEBSTER, N.Y. 14580
(716) 872-4503

**CIHM/ICMH
Microfiche
Series.**

**CIHM/ICMH
Collection de
microfiches.**



Canadian Institute for Historical Microreproductions / Institut canadien de microreproductions historiques

© 1987

Technical and Bibliographic Notes/Notes techniques et bibliographiques

The Institute has attempted to obtain the best original copy available for filming. Features of this copy which may be bibliographically unique, which may alter any of the images in the reproduction, or which may significantly change the usual method of filming, are checked below.

L'Institut a microfilmé le meilleur exemplaire qu'il lui a été possible de se procurer. Les détails de cet exemplaire qui sont peut-être uniques du point de vue bibliographique, qui peuvent modifier une image reproduite, ou qui peuvent exiger une modification dans la méthode normale de filmage sont indiqués ci-dessous.

- | | |
|---|---|
| <input checked="" type="checkbox"/> Coloured covers/
Couverture de couleur | <input type="checkbox"/> Coloured pages/
Pages de couleur |
| <input checked="" type="checkbox"/> Covers damaged/
Couverture endommagée | <input type="checkbox"/> Pages damaged/
Pages endommagées |
| <input type="checkbox"/> Covers restored and/or laminated/
Couverture restaurée et/ou pelliculée | <input type="checkbox"/> Pages restored and/or laminated/
Pages restaurées et/ou pelliculées |
| <input type="checkbox"/> Cover title missing/
Le titre de couverture manque | <input checked="" type="checkbox"/> Pages discoloured, stained or foxed/
Pages décolorées, tachetées ou piquées |
| <input type="checkbox"/> Coloured maps/
Cartes géographiques en couleur | <input type="checkbox"/> Pages detached/
Pages détachées |
| <input type="checkbox"/> Coloured ink (i.e. other than blue or black)/
Encre de couleur (i.e. autre que bleue ou noire) | <input checked="" type="checkbox"/> Showthrough/
Transparence |
| <input type="checkbox"/> Coloured plates and/or illustrations/
Planches et/ou illustrations en couleur | <input type="checkbox"/> Quality of print varies/
Qualité inégale de l'impression |
| <input type="checkbox"/> Bound with other material/
Relié avec d'autres documents | <input type="checkbox"/> Includes supplementary material/
Comprend du matériel supplémentaire |
| <input type="checkbox"/> Tight binding may cause shadows or distortion along interior margin/
La reliure serrée peut causer de l'ombre ou de la distorsion le long de la marge intérieure | <input type="checkbox"/> Only edition available/
Seule édition disponible |
| <input type="checkbox"/> Blank leaves added during restoration may appear within the text. Whenever possible, these have been omitted from filming/
Il se peut que certaines pages blanches ajoutées lors d'une restauration apparaissent dans le texte, mais, lorsque cela était possible, ces pages n'ont pas été filmées. | <input type="checkbox"/> Pages wholly or partially obscured by errata slips, tissues, etc., have been refilmed to ensure the best possible image/
Les pages totalement ou partiellement obscurcies par un feuillet d'errata, une pelure, etc., ont été filmées à nouveau de façon à obtenir la meilleure image possible. |
| <input type="checkbox"/> Additional comments:/
Commentaires supplémentaires: | |

This item is filmed at the reduction ratio checked below/
Ce document est filmé au taux de réduction indiqué ci-dessous.

10X	12X	14X	16X	18X	20X	22X	24X	26X	28X	30X	32X
						✓					

The copy filmed here has been reproduced thanks to the generosity of:

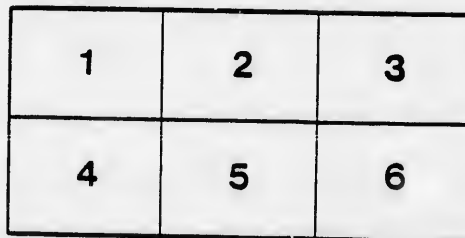
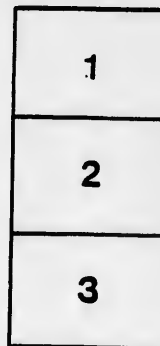
Musée du Château Ramezay,
Montréal

The images appearing here are the best quality possible considering the condition and legibility of the original copy and in keeping with the filming contract specifications.

Original copies in printed paper covers are filmed beginning with the front cover and ending on the last page with a printed or illustrated impression, or the back cover when appropriate. All other original copies are filmed beginning on the first page with a printed or illustrated impression, and ending on the last page with a printed or illustrated impression.

The last recorded frame on each microfiche shall contain the symbol \rightarrow (meaning "CONTINUED"), or the symbol ∇ (meaning "END"), whichever applies.

Maps, plates, charts, etc., may be filmed at different reduction ratios. Those too large to be entirely included in one exposure are filmed beginning in the upper left hand corner, left to right and top to bottom, as many frames as required. The following diagrams illustrate the method:



L'exemplaire filmé fut reproduit grâce à la générosité de:

Musée du Château Ramezay,
Montréal

Les images suivantes ont été reproduites avec le plus grand soin, compte tenu de la condition et de la netteté de l'exemplaire filmé, et en conformité avec les conditions du contrat de filmage.

Les exemplaires originaux dont la couverture en papier est imprimée sont filmés en commençant par le premier plat et en terminant soit par la dernière page qui comporte une empreinte d'impression ou d'illustration, soit par le second plat, selon le cas. Tous les autres exemplaires originaux sont filmés en commençant par la première page qui comporte une empreinte d'impression ou d'illustration et en terminant par la dernière page qui comporte une telle empreinte.

Un des symboles suivants apparaîtra sur la dernière image de chaque microfiche, selon le cas: le symbole \rightarrow signifie "A SUIVRE", le symbole ∇ signifie "FIN".

Les cartes, planches, tableaux, etc., peuvent être filmés à des taux de réduction différents. Lorsque le document est trop grand pour être reproduit en un seul cliché, il est filmé à partir de l'angle supérieur gauche, de gauche à droite, et de haut en bas, en prenant le nombre d'images nécessaire. Les diagrammes suivants illustrent la méthode.

QUEBEC
SUMMER AND WINTER



1897

Published by the CHATEAU FRONTENAC CO.



QUEBEC
SUMMER AND WINTER

SEVENTH EDITION

PUBLISHED BY THE
CHATEAU FRONTENAC CO.

1897

Copyright, 1894, by the Chateau Frontenac Co.



QUEBEC, FROM LEVIS.

QUEBEC—SUMMER AND WINTER.

Here sailed Jacques Cartier bold, and great Champlain,
Here vigorous Frontenac with iron ruled;
Here fell two heroes; one in victory
Scarce realized; his rival in defeat
Scarce known. Peace from their glorious graves has schooled
The ancient discord, till our minstrelsy
Sings growth united in war's vacant seat!—ALFRED THOROLD.

THERE is not a spot in all America richer in historic treasure, or more lavishly endowed by Nature in the beauty, grandeur, and splendor of its surroundings, than the quaint old walled city of Quebec, which, guarding the portal of the great inland waters of the continent, has not inaptly been termed the "Sentinel City of the St. Lawrence." Historically it stands pre-eminent. Here the germ of European civilization was planted in this new northern land, and the two greatest of old-world monarchies battled for half a continent; where mediæval ideas of fortification and defence may be seen; and where the bold fortress-crowned rock and the majestic river flowing with the watery tribute of the whole western world at its feet, show Nature in her most wonderful works.

It is of Quebec that Henry Ward Beecher said: "Here is a small bit of mediæval Europe perched upon a rock, and dried for keeping—a curiosity that has not its equal in its kind on this side of the ocean." And the wondrous beauty of the city's environments is thus described by another gifted writer: "The majestic appearance of Cape Diamond and the fortifications, the cupolas and minarets blazing and sparkling in the sun, the noble



MONTMORENCY FALLS IN WINTER.

basin like a sheet of purest silver, in which might ride with safety the navies of the world, the graceful meanderings of the river St. Charles, the numerous village spires on either side of the St. Lawrence, the fertile valley dotted with the picturesque *habitant* houses, the distant Falls of Montmorency, the park-like scenery of Point Levis, the beautiful Isle of Orleans, the grim purple mountains, the barriers to the north, form a picture which it is no exaggeration to say is unsurpassed in any part of the world."

It is the purpose of this brochure to furnish in a concise form such information concerning this ancient city, its approaches, surroundings, and accommodation for tourists as may assist that numerous and yearly increasing brotherhood, or such of them as may desire to visit the St. Lawrence, in forming their plans to ensure the maximum of recreation with the minimum of trouble.

The city of Quebec is such a convenient resting place between Montreal and the several points of interest on the Lower St. Lawrence, and is of itself so interesting and so unlike other cities of the continent, that very few making the tour of the St. Lawrence pass its memorable walls without spending a few days within them. They desire to see where Cartier, the Columbus of the North, first landed, where Champlain founded the first French colony, where Wolfe fell and Montcalm received his death wound, and where Montgomery, the American general, who was killed while besieging the city on 31st December, 1775, breathed his last within the English lines. The streets of Quebec are redolent of the religious and military history of early Canada, and more historic memories linger about this ancient stronghold than around any other city

on the continent. Every spot now dismissed in a sentence was the centre of events which seemed to the actors of them to be fraught with far-reaching consequences, as indeed many of them were. It is over three hundred and sixty years since Jacques Cartier anchored off what was then the Indian village of Stadacona, and of course claimed the rest of it, all, whatever it might prove to be, for the King of France. He made no permanent settlement here, but in 1549 the Sieur de Roberval spent one winter with a small colony he had brought out, and then retired. In 1608 Champlain arrived and succeeded in establishing the French possession of the country and commenced to provide material for history. His romantic reign as practical King of the St. Lawrence, and the eventful times of his French successors, have been so frequently and so well described by Parkman, Kingsford, Stewart, Le Moine, Bourinot, Chambers and Harper, that it is not necessary to say more of them here. Quebec has seen more war, probably, than any other place on the continent.

The mere sight of the city recalls to memory the long succession of historical events in which many nations were deeply interested. The French, the English, the American, and the aboriginal Indians have all played their parts in the stirring drama whose scenes were laid around the fortress-crowned rock; and the final struggle for Canada between the French and English which closed on the Heights of Abraham, saw the end of France in the northern half of the continent, and commenced the regime which was inevitably destined to result in the self-governing liberty which Canada now enjoys.



CHATEAU FRONTENAC.

HOW TO GET THERE.

QUEBEC is easily reached from all directions. From Montreal, which may be regarded as the starting-point for the Lower St. Lawrence, there is a choice of routes by rail and river. By the Canadian Pacific Railway it is about five hours' run along the north bank of the river, through the old French settlements that in many places are almost as primitive as in the days of Champlain and Frontenac. The railway runs directly under the walls of, and yet into, the city, which has largely outgrown the area enclosed within the defences. The Grand Trunk, on the other side of the St. Lawrence, runs to Levis, directly opposite Quebec, the river being crossed by steam ferry. During the season of navigation the steamers of the Richelieu & Ontario Navigation Co. ply between Montreal and Quebec. Tourists from the New England States who do not wish to visit Montreal can reach the Ancient Capital by way of Sherbrooke, thence via the Quebec Central or Grand Trunk Railway, or by Dudswell Junction, and thence by Quebec Central to Levis. Those from the Maritime Provinces reach Levis either by the Canadian Pacific Short Line to Megantic and thence by the Quebec Central, or by the Intercolonial Railway; and in summer numerous steamships from European and Lower St. Lawrence ports all make Quebec a stopping point.



OLD STAIRWAY
FROM WOLFE'S COVE TO THE PLAINS
OF ABRAHAM.

IN AND AROUND QUEBEC.

WHERE TO STOP.

THE Chateau Frontenac, a magnificent new fire-proof hotel, erected by a number of capitalists of Montreal, stands at the eastern end of a splendid esplanade known as the Dufferin Terrace, just below the King's Bastion of the Citadel,

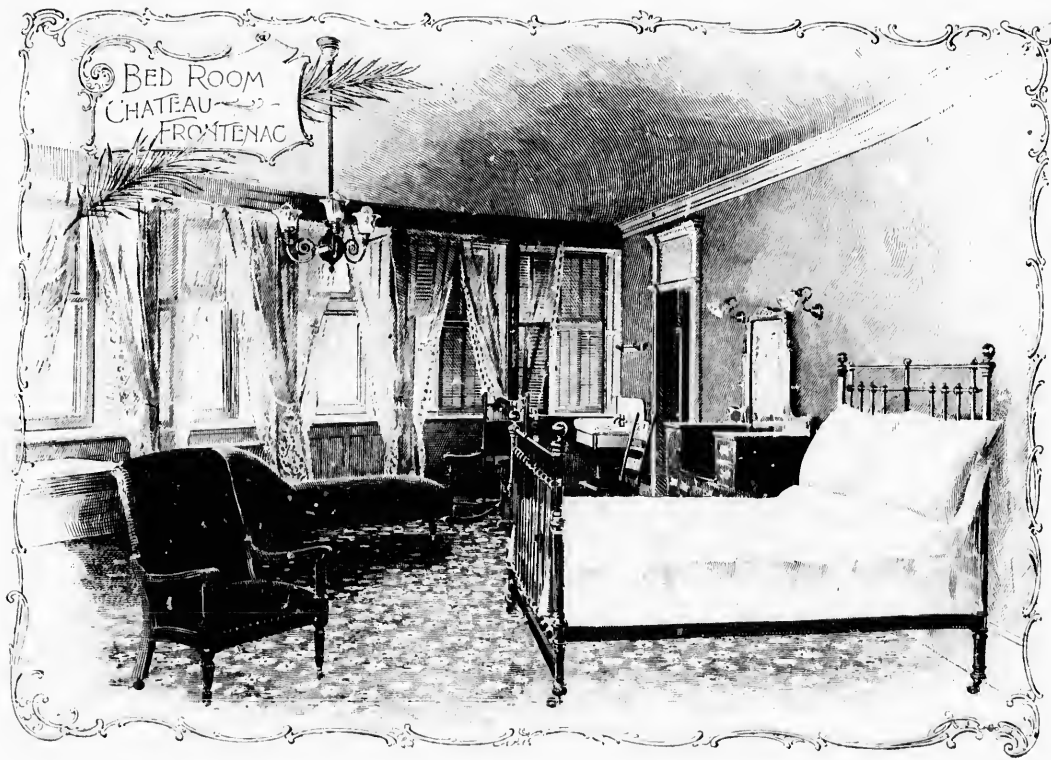
commanding delightful views of the St. Lawrence as far as the eye can reach, — down past the Isle d'Orleans, across to Levis and beyond, up stream to Sillery, and, to the left, the country along the beautiful valley of the St. Charles River. The grandeur of the scenery is indescribable; it is matchless in diversity and charming in effect. No grander site for such a structure could be found on the continent, and it would not be easy to combine the advantages it possesses in any place the world over. This elegant hotel, on which nearly \$1,000,000 has been judiciously expended, is erected on an historic spot of more than ordinary interest—the site of the old Chateau St. Louis, so famous in Canadian history, and once the vice-regal residence of the Governors of Canada, both before and after the conquest. “A massive, shapely edifice is this grand hotel on Dufferin Terrace,” writes the well-known authoress, Faith Fenton; “a veritable old-time chateau, whose curves and cupolas, turrets and towers, even whose tones of gray stone and dulled brick harmonize well with the sober, quaint architecture of our dear old Fortress City. Chateau Frontenac has been planned with that strong sense of the fitness of things. In exterior it blends with its surroundings; it is part of the wondrous picturesqueness. The interior magnificent outlook and hotel luxury are so commingled that neither seems to have been sacrificed to the other. The architect, Mr. Bruce Price, must have a cunning brain to have thus devised this horse-shoe hotel—for thus it is shaped—and so mapped out its interior that all the offices and service-rooms, even the main entrance hall, with its pillared gateway, look out upon the inner curve, leaving every bit of the outer circle, that faces the magnificent stretch of river and sky and far-off hills, to be devoted to guest rooms. It was a clever and difficult planning; it required an equally clever and difficult furnishing; for this horseshoe edifice possesses as many interior curves and corners as outer ones. It is delightfully unexpected in its ways. Rooms that are bow-shaped, crescent-shaped, circular; rooms that are acute-angled, obtuse-angled, triangular,



MARTELLO TOWER

sexagonal—everything except right-angled. And then the stairways—they are everywhere, and equally pretty and unique in effect. Every corner that one peeps into along these wide, curving corridors holds an inviting little stairway—bright and soft, with rich crimson carpeting and oak banisters—that tempts one to ascend or descend just to find where it leads. The broad entrance hall and offices, the great rotunda and reading-room, have tessellated floors, and are large, light, airy, and finely furnished. The stairways and banisters are of oak—a wood that is much used throughout the building. Ascending the main stairway, which leads by easy turns from the vestibule, we come upon one of the most artistic effects in the building, for, standing in the broad corridor, beautiful with its white panellings, oak floor, and crimson Axminster, we look between large, creamy, daintily-moulded pillars into the long drawing-room, and beyond it into the ladies' pavilion. It is a wonderfully pretty and artistic entrance that these white, carven pillars afford. It brings a suggestion of the Renaissance and the white and gold days of Louis Quinze. The ladies' pavilion is delightful. It might be called the ladies' rotunda, for it corresponds with that of the one below. It is perfectly round, of course, with those fine square carven pillars forming the entrance way, and a central round pillar supporting the graceful sprays of lights. Half of the circling wall is filled with windows that look out upon a scene, than which no fairer one exists. From the gray Citadel, along and adown the river, to Isle d'Orleans—with Lower Town lying beneath the Terrace and all the landscape beauty across the rapid water—truly, it is a superb eastern portal, a fit correspondent for Canada's magnificent mountain guardians of the west."

There are many suites in this big hotel, some of them containing as many as eight rooms, and of one the following description is given: "Two dainty bedrooms and two equally dainty bathrooms, in white marble and gold, lead from either end of a bow-shaped boudoir, whose curve is one unbroken line of beautiful windows, richest Axminster of glowing crimson, creamy panellings, tinted walls and ceiling, deep window-seats—all these the room possesses, but one sees them not; they are as nothing compared to the great curve of radiance that shines and sparkles from this splendid bow of light. . . . The hotel throughout



is carpeted with Axminster and Wiltons in deep crimsons and moss greens — our footfalls press away into softest plush. The furniture is chiefly oak. The bedroom furnishings are much alike throughout — handsome brass bedsteads, oak furniture, and cosy upholstery in each room.

“It is one of the features of Hotel Frontenac that, from lowest to topmost story, everything is of the best. It is equally a feature that the fourth, fifth and sixth stories are more desirable than the lower ones, for the higher one climbs the wider the panorama of river, hill and sky that unrolls to one’s view.

“The dining hall is rich and in absolute harmony with the Louis Quinze conception. It is a very large, square, airy room, with windows looking out upon the river. The floor is of oak, in herring pattern. The wainscoting is of leather, studded with brass nails. The wall above is freely panelled in oak, and decorated between with richly tinted tapestries representing an important event in the Roman empire. This warm, dull, tinted tapestry, crowded with quaint figures, is an amusement and delight to the eye, and under the soft electric glow the result is absolutely satisfying. . . . A peep into the kitchen — a great, wide, cleanly place, made busy at that moment with dinner preparations — is a revelation. One of the things a woman notices first is the table furnishings. And these at Chateau Frontenac have been chosen with perfect taste; from the simple silver-rimmed castor, with its square-cut bottles, to the tiny fruit spoon — everything harmonizes in the most satisfying way.”

Another writer, Mr. E. T. D. Chambers, in his “Guide to Quebec” says: “How home-like and comfortable are the rooms in the princely Chateau, and how unexcelled anywhere are the *cuisine* and *menus*, have been testified to by the Earl and Countess of Aberdeen and their suite, by the Goulds, the Vanderbilts, the Astors, and thousands of prominent tourists from all parts of the world.”

DUFFERIN TERRACE.

THE pride and the glory of Quebec is Dufferin Terrace, an unrivalled promenade and public rendezvous. From it, or better, from any of the windows in the Chateau Frontenac, which stands at its eastern limit and at the base of the Citadel, a view, unsurpassed for beauty and grandeur, bursts upon the beholder. The broad

promenade is fully a quarter of a mile long, and erected on it are five handsome kiosks, to which the names of Plessis, Frontenac, Lorne and Louise, Dufferin, and Victoria have been given, besides another for the use of bands of music, which at times are those belonging to British and French men-of-war visiting the port. Elevated 200 feet above the St. Lawrence, which here contracts its high banks until but a mile separates them, it is a point of vantage from which to drink in the feast of scenic splendour which is spread out before one. There is the mighty river — described by Howells as the “Little Giant” — on whose bosom floats craft of every description, from the huge ocean greyhound to the primitive canoe of the Indian; across the water is Levis, on whose crowning cliffs, rising higher even than those of Quebec, are three immense forts erected by the British Government at a cost approaching \$1,000,000; down the stream is the beautiful Isle d’Orleans — the Isle of Bacchus of Jacques Cartier, and at a later time known as Sorcerer’s Island, for in the firefly lights that danced over its swamps the native Indians and the early French settlers saw the work of His Satanic Majesty and his uncanny followers. Farther away is Cape Tourmente, and along the shores are the quaint villages of the *habitants* and the narrow-stripped farms which excite the surprise and curiosity of the traveller. To the



LITTLE CHAMPLAIN STREET, QUEBEC

left the St. Charles gracefully sweeps and blends its waters with the greater stream. Forest and river and mountain and cultivated broad acres combine to make gorgeous landscape, and in the rear tower the Laurentian Hills, whose purpled crests lose themselves in the fleecy clouds. At one's feet is the bustling Lower Town and the ships in port, and above is the frowning Citadel whose hoary walls have environed Quebec with a glamour of romance and renown.

Every foot of land here is historic ground; the very air breathes of deeds of valorous daring and military prowess, which even the peaceful aspect of the present or the hum and bustle of everyday business near by fails to dispel, for here the Kings of Old France sent their men and treasure to build up a New France on this side of the Atlantic, where these gallant adventurers lived and plotted and fought and wrested countless leagues of land from the savages, and whose prowess shed lustre on *la belle* France. Looking down from the Terrace front the narrow street bearing the name of the founder of Quebec is seen, and its long length followed to the foot of the Citadel cliff, just beyond which is the narrow pass where heroic Montgomery fell mortally wounded while gallantly leading his men in a rash and daring attack on the city. Almost directly under the northern end of the Terrace, where the cliff stands back farther from the river, and the streets and buildings huddle closer together, is the historic Church of Notre Dame des Victoire, and a little to the south is the Champlain market hall, and very near its site the first building in Quebec was erected in 1608 by the adventurous and chivalrous Champlain. It included a fort, a residence, and stores. Here was the first clearing made; the next was that upon a portion of which the Chateau Frontenac now stands, where Champlain erected the Chateau St. Louis, which played so prominent a part in Canadian history, at a later era being the castle whence the French governors exercised undisputed sovereignty from the mouth of the Mississippi to the great inland lakes of Canada, and along the shores of the St. Lawrence and its Gulf. Its cellar still remains under the wooden covering of the present Durham Terrace, immediately adjoining the Chateau Frontenac. In the rear of the Chateau St. Louis was the area of the fort now covered by the Place d'Armes and a part of the hotel, which was frequently attacked by the intrepid and ferocious Iroquois, who, having overthrown the outposts, more than once threatened the fort itself, and just beyond are the high peaked

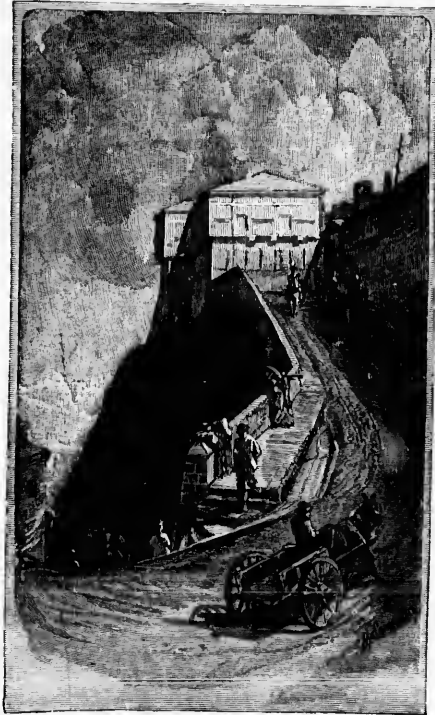
Commissariat building of the Imperial Government, the Kent House, where resided Her Britannic Majesty's father when commandant of the Imperial forces in Canada, the headquarters of Montcalm, and the place where that gallant soldier died, the old building having been replaced by a modern structure now occupied as a livery stable and numbered 45 and 47 St. Louis Street.

THE CITADEL.

THE Citadel occupies the most commanding position in Quebec, overlooking the St. Lawrence and the country round, and having a clear range for its guns in every direction. It stands 303 feet above the river, and at one time was a formidable position of defence, so much so that Quebec has sometimes been called the Gibraltar of America. Though still a fortress, its present chief use is as a barrack, and in it are kept immense military stores and arms for 20,000 men. Access is gained to the trenches by the Chain gate, and to the Citadel by the Dalhousie, named after a former Governor. The Citadel is about ten minutes' walk from the Chateau Frontenac.

THE GOVERNOR'S GARDEN.

THE Governor's Garden is a public park a little in the rear of the Dufferin Terrace, and between the Chateau Frontenac and the Citadel.



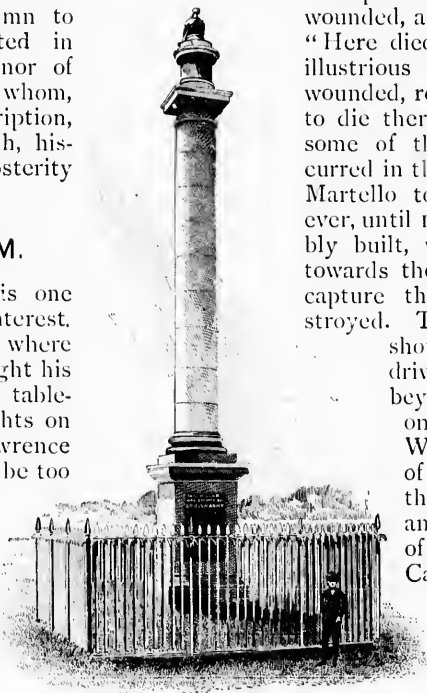
HOPE HILL.

It is a pretty little retreat, and in it is a dual-faced stone column to Wolfe and Montcalm, erected in 1827 and 1828 in joint honor of the illustrious generals, to whom, in the words of the inscription, "Valor gave a common death, history a common fame, and posterity a common monument."

PLAINS OF ABRAHAM.

THE Plains of Abraham is one of the chief points of interest.

Here was the battlefield where Wolfe fell and Montcalm fought his last fight. The plain is the tableland on the crest of the heights on the north bank of the St. Lawrence River, which were thought to be too precipitous for an enemy to climb. The heights were, however, quietly and successfully scaled, and on 13th September, 1759, the memorable battle fought on their edge which decided the fate of Canada. A tall marble shaft now stands to mark



WOLFE'S MONUMENT.

the spot where Wolfe fell, mortally wounded, and bears the inscription: "Here died Wolfe victorious." His illustrious rival, Montcalm, also wounded, retreated within the walls to die there. On the plains, where some of the heaviest fighting occurred in the famous battle, are three Martello towers, not erected, however, until 1812, which, while formidably built, were weakly constructed towards the city, so that in case of capture they might easily be destroyed. The field of the battle is a

short and pleasant walk or drive from the hotel, a little beyond the St. Louis gate, on the road to Spencer Wood, the official residence of the Lieut.-Governor of the Province of Quebec, and in olden days the home of the Governors-General of Canada. A short distance off, on the escarpment overhanging the St. Lawrence, is the path by which the British troops scaled the cliffs

on the night before the battle, and at the foot of the rocks is Wolfe's Cove, two miles above which is Sillery, a place of historical interest, where Maisonneuve spent his first winter in Canada, and the scene of the horrible massacre of Christian Hurons and their missionaries by savage Iroquois in 1655.

THE URSULINE CONVENT.

THE Ursuline Convent is directly connected with this important battle on the Plains of Abraham, by reason of its containing the remains of Montcalm, whose body is buried in the Convent, while his skull is kept in the chaplain's parlor, to which visitors are freely admitted. This, the oldest convent in Quebec, was founded in 1639, destroyed by fire in 1650, rebuilt to meet a similar fate in 1686; but the original foundations and the walls of the second building are still utilized in the third structure. The convent is a pile of massive stone edifices, and the chapel contains the remains of Montcalm and what are claimed to be the following relics: the body of St. Clements from the Catacombs of Rome, brought to the Ursulines in 1687; the skull of one of the companions of St. Ursula, 1675; the skull of St. Justus, 1662; a piece of the Holy Cross, 1667; a portion of the Crown of Thorns, brought from Paris in 1830. It is open to visitors, who may there see some rare works of art, including paintings by Vandyke and Champagny, the property of the Sisters of the Convent.

THE HOTEL DIEU.

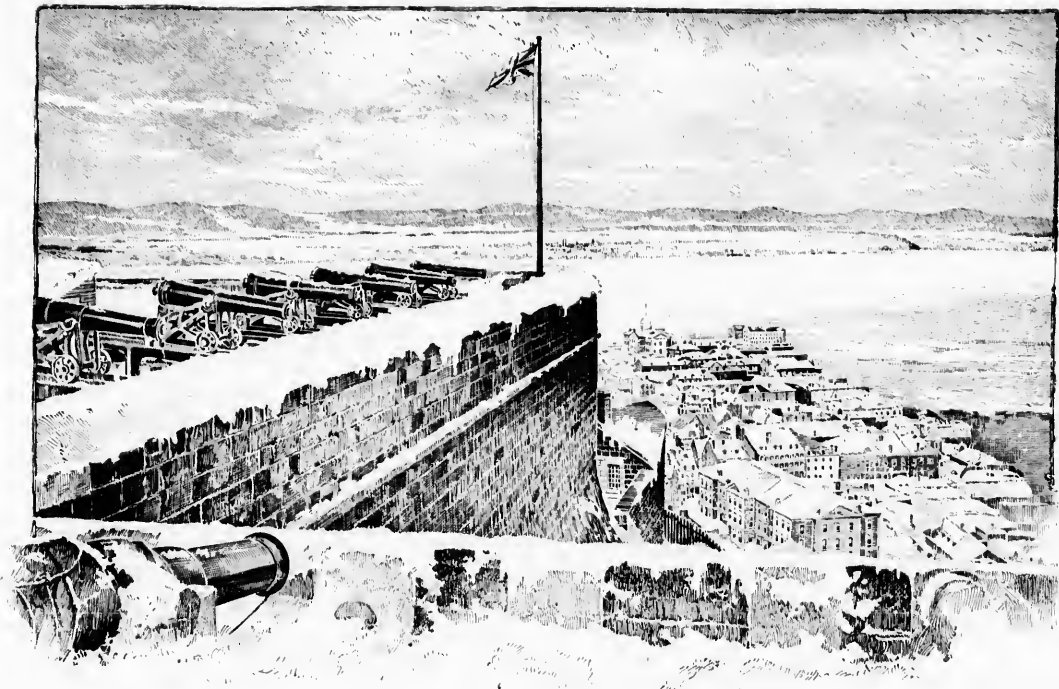
THE Hotel Dieu, a convent and a hospital, founded by a niece of Cardinal Richelieu, contains some fine pictures. In the chapel of the convent is the skull of Jean de Brebeuf, the great Jesuit missionary, of whose doings Parkman and Charlevoix have given a most interesting and trustworthy account. The establishment is open to visitors on application to the Lady Superior.

THE LAVAL UNIVERSITY.

THE Laval University is the chief French University, and the oldest in Canada. Laval grew out of the Seminary of Quebec, founded in 1663, which was liberally endowed by the first Bishops of the Sec. The buildings are valued at \$1,000,000, and that one known as the Minor Seminary is interesting to Americans, from the fact that the officers under Montgomery and Arnold who were captured during the siege of 1775 were incarcerated in it. Laval has an excellent museum, a library of 100,000 volumes, and many art treasures in its keeping. In its gallery of paintings — a miniature Vatican collection — are two Salvator Rosas, three Teniers, a Romenelli, a Joseph Vernet, a Puget, two Vandykes, a Perocci Poussin, and many other masterpieces.

THE BASILICA AND CARDINAL'S PALACE.

FACING the historic old market square, which dates back to 1686, where in olden times stood the public pillory, is the Basilica, the mother church of Roman Catholicism in North America. Its erection was commenced in 1647, and since its definite opening in 1657 services have been held in it uninterruptedly except during the period required for making repairs necessitated by the disastrous siege of that year. The design of the chancel is in faithful imitation of that of St. Peter's at Rome. On its walls hang a rich collection of paintings, many of them invaluable works of art, which were rescued from destruction during the Reign of Terror in France, when the mob pillaged churches and monasteries. Amongst other paintings is Vandyke's Christ on the Cross. Adjoining the Basilica and Laval is the palace of His Eminence, Cardinal Taschereau. In its grand *salon de reception* are the throne of the Cardinal, busts and portraits of all his predecessors, and his rare gifts from the Pope.



VIEW FROM THE CITADEL, QUEBEC, IN WINTER

CHIEN D'OR.

IN the northern facade of the post-office, on Buade Street, opposite the Canadian Pacific's city ticket office, is the gilt figure of a dog gnawing a bone, about which exists a legend which Kirby has woven into a charming romance. Under the French regime, a coffee house stood upon the site now occupied by the post-office, and its owner, having a disagreement with Intendant Bigot or some other high official, revenged himself by placing this sculptured tablet in front of his house, with accompanying lines in French, the translation of which reads :—

I am a dog gnawing a bone,
While I gnaw I take my repose,
The time will come, though not yet,
When I will bite him who now bites me.

THE ENGLISH CATHEDRAL,

ERECTED in the first years of the present century by the British Government, is an interesting spot, not for its architectural beauty, but for its historic associations and for the splendor of its mural monuments, chancel window and elaborate solid silver communion service, the latter costing \$10,000 and being a present from King George III.

There are many other buildings in Quebec interesting to a visitor who is or who desires to place his mind *en rapport* with the early history of Canada, and there are modern edifices, such as the City Hall (on the site of the Old College of the Jesuits, erected in 1637, which after the estates of that Order were escheated by the Crown was occupied by British troops, and was known as the Jesuits' Barracks), the Legislative buildings on the Grand Allee, in the fashionable residential quarter, custom-house, Y. M. C. A. building, court house, armory and drill hall, etc., and modern public works like the immense tidal basins, which can hardly fail to attract attention. Sauntering about the city the American tourist will constantly meet with curious and unaccustomed architectural sights. The Grand Battery, on the very edge of the

cliff overlooking the river, mounted with guns and mortars of obsolete pattern, is a favorite resting place from which splendid views of the river and surrounding country are obtained. At its southern extremity, overlooked by the Chateau Frontenac, formerly stood the Canadian Parliament buildings, which were twice destroyed by fire. The "Break Neck Steps" (leading from Mountain Hill to Little Champlain Street, once a leading thoroughfare), although demolished and replaced by a modern structure, will yet strike him as well deserving their name, and in that portion of the city called "Sous le Cap" he will see a great contrast to corresponding portions of any American city he is acquainted with.

THE CITY'S GATES AND WALLS.

THE gates which pierce the fortifications are comparatively modern structures, and only two remain — Kent and St. Louis, the former being named after the Duke of Kent, father of Queen Victoria, who at one time was commander of the British forces in Canada. St. John's is being demolished to give right of way to the invading electric car. The last vestige of the original portals — St. Louis, Palace and St. John — disappeared many years ago, and the structures with which they were replaced, with Hope and Prescott gates, built by the British since the Conquest, have within recent years met a similar fate, with the exception of St. Louis, which was erected in 1879.

The walls of the city, which afford a pleasant promenade, can be reached by stone steps at either St. Louis or Kent gates or along the *glacis* at the Esplanade, an expanse of tree fringed verdure extending from St. Louis to St. John's gates. The walk on the walls can be extended in one direction to the Citadel and in the other to where the Palace gate once stood.

CHURCH OF NOTRE DAME DES VICTOIRES.

THIS historic little edifice is one of the interesting sights of the Lower Town, having been partially destroyed by the fire of the Levis batteries during Wolfe's siege of Quebec in 1759, and subsequently rebuilt upon its old walls. The *fete* of Notre Dame de la Victoire was established in sacred commemoration of the defeat of the British invaders under General

Phipps in 1690, to be annually celebrated in the church on October 7th, and after the shipwreck of the second British invading fleet, fourteen years later, which the French inhabitants regarded as a miraculous interposition of Providence in their favor, the edifice was given the name it still bears.

HISTORIC RUINS.

OVER in the valley of the St. Charles, the gaunt ruins of the famed Chateau Bigot still remain. The tower in which perished by poison, at the instigation of her fair rival, the young Algonquin mistress of the profligate Intendant, still stands in the midst of the forest labyrinth; but the ruins give only a faint conception of the immensity and grandeur of the original building. Another of Bigot's palaces stood within a stone's throw of the Canadian Pacific Railroad station, its solid foundation walls being utilized by a brewing company in the erection of one of its offices.

ACROSS THE RIVER.

FROM Levis a magnificent view of Quebec and its surroundings can be obtained. The military forts, on the heights above, from which, during the summer of 1759, the cannons of the English bombarded the city with shot and shell until the whole of the Lower Town was a confused mass of ruins, are worth visiting, and so is the Engineer's Camp at St. Joseph de Levis, — magnificently wooded meadows, once the camping ground of the Royal Engineers, whose name it has continued to bear. A splendid vista is to be obtained of both shores of the St. Lawrence, and in a great cleft in the high northern bank of the river the Falls of Montmorenci leap down into the stream in full view of the camp. Near by is the Government graving dock, a massive piece of masonry. It is a pleasant drive to the Falls of Chaudiere,





CALECHE DRIVING.

which may also be reached by train or steamer. En route is Etchemin (or New Liverpool), which possesses one of the handsomest churches in America, its frescos eliciting the admiration of all who have visited the edifice.

ISLE D'ORLEANS.

A SAIL down the river to this beautiful island, where a number of wealthy Quebecers have summer residences, is one of the attractions which should not be missed, and an afternoon can be pleasantly spent by taking steamer immediately after luncheon and returning to the Chateau Frontenac in time for dinner.

THE FALLS OF MONTMORENCY.

THESE are situated about seven miles below Quebec. The drive to them — a favorite trip with all visitors — is through an almost continuous succession of French Canadian farms and cottages. On the road is Beauport, a place bombarded by Wolfe, and now containing one of the principal Canadian hospitals for the insane. The Falls of Montmorency are 100 feet higher than those of Niagara, and in winter a large cone of ice, which is frequently utilized by pleasure parties from Quebec as a toboggan slide, usually forms at the foot. The

Natural Steps, about a mile above the falls, where the river dashes wildly through a deep cañon, are amongst the grandest features of Montmorency. The riverside parishes of L'Ange Gardien and Chateau Richer, the former of which was destroyed by Wolfe's soldiery in 1759, afford excellent fishing. The tourist may also go to Montmorency by the Quebec, Montmorency & Charlevoix Railway, and by steamer in summer.

LA BONNE STE. ANNE.

THE shrine of Ste. Anne de Beaupré, for over 250 years the Mecca of devout pilgrims seeking restoration of health, is twenty-one miles from Quebec, and is reached by the Quebec, Montmorency & Charlevoix Railway which closely follows the bank of the St. Lawrence, or by steamer in summer. Tradition relates that in the early part of the seventeenth century some Breton mariners, who were overtaken by a violent storm while navigating the St. Lawrence, solemnly vowed to Ste. Anne that, if delivered from the dangers which encompassed them, they would erect a sanctuary in her honor on the spot on which they should land. Their prayers being heard, they built a small wooden chapel in fulfilment of their vows, which has since become famous, and which then, as now, was called by her name. The primitive little church was replaced by a larger structure in 1660, which was subsequently rebuilt and enlarged. Across the street, in wide contrast to this unpretentious building, is the magnificent edifice which was raised to the dignity of a Basilica by Pope Pius IX. It is a fine specimen of Corinthian architecture, and is of immense proportions. A colossal statue of Ste. Anne, of marvellous beauty, surmounts the facade between twin towers rising to a great height. The interior of the sacred edifice rivals the most famous cathedrals in the world in beauty and imposing grandeur, the magnificent paintings and statuary representing the life of Christ from Bethlehem to Calvary. On each side of the entrance are large pyramids of crutches and canes and trusses and splints left by former owners as mute testimony to the efficacy of the saint's intervention on their behalf. Near the altar is also another statue of Ste. Anne, resting on a column of marble, to which some deeply venerated relics are attached; and in the sanctuary are a fragment of a finger bone of the saint procured by Laval, the first bishop of New France; a part of the saint's wrist sent by Leo XIII.; and a portion of the rock from the grotto in which

Ste. Anne gave birth to the Virgin Mary. The Scala Santa, or "sacred stairs," which the zealous supplicants ascend upon their knees, is built in imitation of Pilate's Palace at Jerusalem, each step containing a relic of the Holy Land. Thousands of tourists visit this fragment of old-time Palestine, as Ste. Anne de Beaupré has been called, impelled by the curious scenes witnessed there and the costly works of art possessed by the sanctuary; and the high esteem in which the patron saint is held is shown by the remarkable increase in the perennial pilgrimages to her shrine. In 1874 there were 17,200 visitors; in 1884, 61,000; in 1889, 100,000; in 1893, 130,000; and in 1894 about 200,000, which number was largely exceeded in 1895, and was almost doubled in 1895. Formerly the pilgrimages were from the Province of Quebec only; but now they are from the other provinces of Canada and from the United States and Europe. Accommodation is provided for visitors on a large scale. Six miles away are the beautiful Falls of Ste. Anne, and beyond them again are the Seven Falls.

LORETTE.

LORETTE is another place to which visitors are fond of driving. It is an Indian village on the St. Charles River, about nine miles from Quebec, and there are some beautiful falls in the immediate neighborhood, differing widely from the cataract of Montmorenci, but equally as striking in their beauty. Here will be found the remnant of the once powerful Hurons, who, after the treacherous massacre of their tribe by the Iroquois, sought refuge near Quebec, and, adopting the religion and language of the early French settlers, allied themselves with them in resisting the incursions of the common enemy. The village was first settled in 1697. The Lorette Chapel, nearly 200 years old, is of the same model and dimensions as that of the Santa Casa, from which the image of the Virgin, a copy of that in the famous sanctuary, was sent to the Indians.

In every direction around Quebec the country affords charming drives, and at the French-Canadian villages, which occur with more or less frequency, a stranger will be able to compare the peculiarities of life amongst a people who, more than any other in America, have preserved the traditions of their ancestors, with the essentially modern customs and lines of thought which characterize the rural settlements of other parts of the continent.



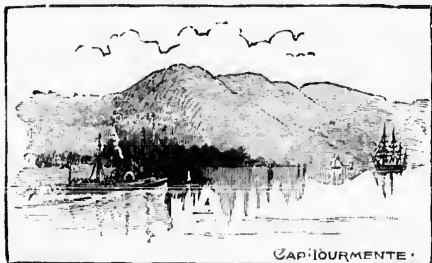
MONTMORENCI FALLS

LAKE ST. JOHN.

ONE hundred and ninety miles from Quebec, via the Quebec & Lake St. John Railway, through a country whose wild grandeur has earned for it the title of "The Canadian Adirondacks," is the great inland sea — Lake St. John. It is a favorite resort for health and pleasure-seekers, Roberval, on the lake, having magnificent hotels. The fishing is excellent. Tourists, in summer, are offered an enjoyable round trip from Quebec to Lake St. John and thence to Chicoutimi by rail, and down the famed Saguenay, whose scenery is awe-inspiring, and back to Quebec by steamer.

DOWN THE GULF.

A PLEASANT trip down the River and Gulf of St. Lawrence is afforded the visitor to Quebec. Passing Cape Tourmente and Grosse Isle, the quarantine station for Quebec, and indeed for the entire St. Lawrence trade, many islands of remarkable scenic beauty dot the river. Murray Bay, Riviere du Loup, Cacouna and Tadousac, at the mouth of the Saguenay, are fashionable watering resorts, with good hotel accommodation and excellent bathing facilities. The trip can be extended down the Gulf to Prince Edward Island and to St. John's, Newfoundland, Halifax, N.S.; and to New York, Boston, and other American ports.



QUEBEC IN WINTER.

WHILE Quebec is pre-eminently a charming summer resort and an interesting city at all times, it perhaps possesses the greatest attraction to many during the winter months. At the first appearance of snow and frost the city awakens into new life, and prepares for the merry season which is prolonged into the early days of spring. The whole country is covered with a spotless white

mantle of snow, on which the northern sun plays in dazzling brilliancy; glorious sunsets flood the heavens, burnishing the city's minarets and spires with a golden tinge, and, as the shadows of evening creep on, the matchless aurora borealis, the dancing rainbows of the northern sky, entrance one with their ever-changing, resplendent beauty. The streets of the city take on a new appearance: thronged with warmly clad groups, and hundreds of carioles, queer little sleds peculiar to this quaint old place, dash along, their jingling bells filling the air with silvery music. The season is one of pleasure and recreation, and there are countless means afforded for indulging in delightful pastimes that are invigorating and health-giving — tobogganing, most exhilarating and exciting of sports; skating in mammoth covered rinks, snow-shoeing, curling, sleigh-driving, and other seasonable pleasures which find a fitting nightly finale in the social functions given by the most hospitable of people. Glorious sport is obtainable during January and February in fishing for tommycods through the ice of St. Charles river, whose estuary meets the eye from the Chateau. In those months countless little cabans occupied by fishermen, many of whom are visiting tourists, dot the river's frozen surface. "The city itself and the winter life within its walls," writes Julian Ralph, the well-known correspondent, "are prime curiosities. The great granite walls capped and flanked with snow; the narrow curving streets heaped with snow; the houses all fringed with ponderous icicles; the trees whose every limb is outlined with a coating of snow; the sleighs all buried in furs; the people in blanket suits and furs and moccasins; the gorgeous snow-shoers; the priests and soldiers and nuns—all these shown off beside the ice-glutted river are quite enough to satisfy the tourists without the added trifles of a curling match or a masquerade on skates, or even a vice-regent's ball." These days of delights are accentuated in carnival times, when the Merry Monarch occupies his winter capital. Quebec is an ideal carnival city, and contrives to evolve from its winter's rigors a series of fairy-like spectacles that can only be dreamed of as happening in an enchanted land. The city is *en fete*; mirth and jollity and good-fellowship prevail; and visitors, whether inclined to participate in the festivities or not, enjoy a season of unalloyed delight and sightseeing without parallel in the world. Huge ice castles and fortresses, aglow with a thousand scintillating lights, are stormed by a host of gaily-costumed snow-shoers, armed with weapons whose discharge is followed by elaborate pyrotechnical displays;

magnificent arches of ice and evergreens beautify the streets so profusely and of such a varied character as to be almost bewildering; the public squares are adorned with historic figures neatly shaped in ice; there are grand military pageants, and picturesque Indian, lumber and sugar camps, which give a glimpse of a curious life strange to many; and the accustomed outdoor sports are indulged in with augmented vigor. The days and nights are replete with innocent and healthful amusements, to which zest is added by the keenness of the climate, which inspires one to live out-of-doors, and not infrequently by an old-fashioned snow-storm. In these bright, glorious days, the stranger is advised to wrap warmly if he would participate in the mid-winter pleasures of the snow-mantled "White City of the North," whose clear, invigorating, hyperborean air is not less delightful in its season than are the balmy breezes which waft gently from the old Laurentians and make the ancient capital an ideal resting place in the summer days.

MONTREAL,

THE COMMERCIAL METROPOLIS.

MONTREAL is second only to Quebec in historic interest. It is picturesquely situated on an island in the St. Lawrence River, at the head of ocean navigation, and yet over 600 miles inland, and is the commercial metropolis and railway centre of the Dominion. Montreal ranks amongst the most beautiful cities of the continent, and has very many attractive and historic spots which cannot fail to interest and delight sight-seers. It distinctively presents all the aspects and elements of metropolitan life, with evidences of material wealth and prosperity on every hand. It is pre-eminently a city of churches, surpassing Brooklyn itself in this respect, and in the midst of the bustle of the city's commerce are gray old sanctuaries and stately cathedrals which rival the grandest edifices of Europe in splendor and historic interest. The cathedral of St. James, modelled after St. Peter's at Rome, the church of Notre Dame, the Jesuit Church and College, Bonsecours Church, erected in 1771, the English Cathedral, St. James (Methodist), and Erskine, St. Paul's, and St. Andrew's (Presbyterian), are worth seeing. Mount Royal, from which the city takes its name, affords a delightful drive (or it can be ascended by elevated railway), and from its summit is seen one of the grandest pano-

ramas of the picturesque valley of the St. Lawrence that is obtainable. Beyond the Belœil peaks eastward the Green Mountains of Vermont can be distinguished on clear days; to the south are the Adirondacks; and along the north runs the Laurentian range, oldest of the world's mountains. Other points of interest are the Victoria Bridge spanning the St. Lawrence, McGill University, Windsor Station and offices of the Canadian Pacific Railway Co., Nelson Monument, Champ de Mars (the military parade ground of the early days), the Maisonneuve Monument on Place d'Armes, the Sir John Macdonald Monument on Dominion Square, Windsor Hotel, new Royal Victoria Hospital, the City Hall, Court House, Place d'Armes, Chateau d'Ramezay, Bonsecours Market, etc. A run down the Lachine Rapids and a visit to the curious old Indian village of Caughnawaga, opposite Lachine, the home of the remnant of a once powerful nation, St. Helen's Island, Back River, or any of the numerous city parks and public buildings, are worth making. Montreal has an admirable electric street car system, and its cab service is noted for its excellence and cheapness.

OTTAWA,

THE CAPITAL OF CANADA.

VISITORS to Quebec, via Montreal, can easily reach Ottawa, the Capital of the Dominion, by the Canadian Pacific or other railways, or by river in summer, the railway run being less than four hours from the commercial metropolis. The site of Ottawa for picturesque grandeur, it has been stated, is only second to that of Quebec. It is located on the Ottawa River, where the Rideau and Gatineau join, and where the waters of the first named hurl themselves over the Chaudiere Falls into the seething cauldron below. But it is the national buildings which are the chief pride of Ottawa, and the principal objects of interest to tourists. They stand out boldly on Parliament Hill, overlooking the Ottawa, in all the beauty of seemingly varied architecture. They were erected at a cost of about \$5,000,000. The octagonal-shaped library in rear of the Houses of Parliament is one of the most complete in the world, and contains 155,000 volumes, some of which are exceedingly rare books. Other objects

of interest are Rideau Hall, the home of the Governor-General of Canada, Rideau Canal, built in 1827 for military purposes, Major Hill Park, the city buildings, extensive saw-mills, and the timber slides by which the square timber from the Upper Ottawa passes down without damage into the navigable waters below. To go down these slides, as nearly every visitor does, is an exciting and exhilarating experience. Opposite Ottawa is the French city of Hull, and combined they have a population of over 60,000.



Parliament Buildings.
OTTAWA.



PROVINCIAL PARLIAMENT BUILDINGS, QUEBEC.

YOU SHOULD SEE

The Citadel,	Dufferin Terrace,
Plains of Abraham,	Chateau Frontenac,
Martello Towers,	Governor's Garden,
Grand Battery,	Duke of Kent's Residence.
Wolfe's Monument,	Montcalm's Residence,
Laval University,	The Esplanade,
Cardinal's Palace,	The City's Gates,
French Cathedral,	Ursuline Convent,
English Cathedral,	Parliament Buildings,
Ladies' Protestant Home,	New Court-House,
Short-Wallick Monument,	Falls of Montmorency,
Chateau d'Eau,	Lake Beauport,
Beauport Asylum,	Lorette,
Lake St. Charles,	Quebec Seminary,
Cap Rouge,	Notre Dame des Victoires.
Wolfe's Cove,	Shrine of Ste. Anne.
Forts of Levis,	Chaudiere Falls,
Sous le Cap,	Isle d'Orleans.

Chateau Frontenac

DUFFERIN TERRACE,
QUEBEC, CAN.

Rates from \$3.50 to \$5.00 per day.
Rooms Single or en Suite.

SPECIAL ARRANGEMENTS WITH

- * LARGE PARTIES AND
- * THOSE MAKING PROLONGED VISITS.

FOR FURTHER INFORMATION
ADDRESS

Manager CHATEAU FRONTENAC,
QUEBEC.

