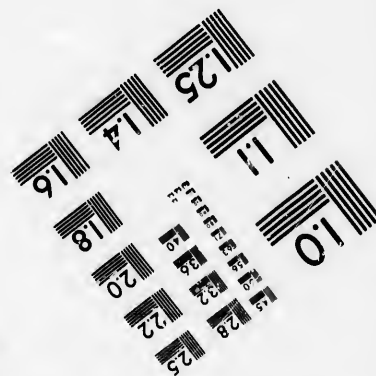
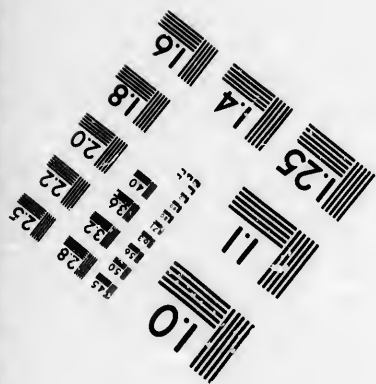
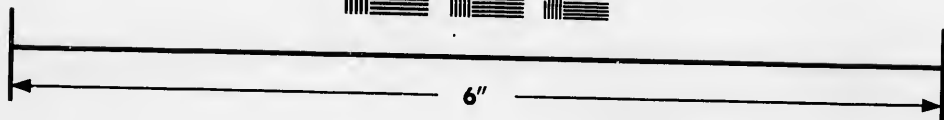
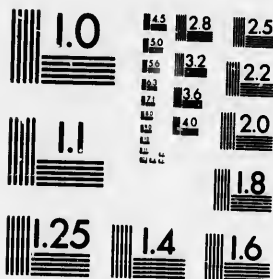


**IMAGE EVALUATION
TEST TARGET (MT-3)**



**Photographic
Sciences
Corporation**

23 WEST MAIN STREET
WEBSTER, N.Y. 14580
(716) 872-4503

**CIHM/ICMH
Microfiche
Series.**

**CIHM/ICMH
Collection de
microfiches.**



Canadian Institute for Historical Microproductions / Institut canadien de microreproductions historiques

© 1986

Technical and Bibliographic Notes/Notes techniques et bibliographiques

The Institute has attempted to obtain the best original copy available for filming. Features of this copy which may be bibliographically unique, which may alter any of the images in the reproduction, or which may significantly change the usual method of filming, are checked below.

L'institut a microfilmé le meilleur exemplaire qu'il lui a été possible de se procurer. Les détails de cet exemplaire qui sont peut-être uniques du point de vue bibliographique, qui peuvent modifier une image reproduite, ou qui peuvent exiger une modification dans la méthode normale de filmage sont indiqués ci-dessous.

- | | |
|--|--|
| <input checked="" type="checkbox"/> Coloured covers/
Couverture de couleur | <input type="checkbox"/> Coloured pages/
Pages de couleur |
| <input type="checkbox"/> Covers damaged/
Couverture endommagée | <input type="checkbox"/> Pages damaged/
Pages endommagées |
| <input type="checkbox"/> Covers restored and/or laminated/
Couverture restaurée et/ou pelliculée | <input type="checkbox"/> Pages restored and/or laminated/
Pages restaurées et/ou pelliculées |
| <input type="checkbox"/> Cover title missing/
Le titre de couverture manquant | <input checked="" type="checkbox"/> Pages discoloured, stained or foxed/
Pages décolorées, tachetées ou piquées |
| <input type="checkbox"/> Coloured maps/
Cartes géographiques en couleur | <input type="checkbox"/> Pages detached/
Pages détachées |
| <input type="checkbox"/> Coloured ink (i.e. other than blue or black)/
Encre de couleur (i.e. autre que bleue ou noire) | <input checked="" type="checkbox"/> Showthrough/
Transparence |
| <input type="checkbox"/> Coloured plates and/or illustrations/
Planches et/ou illustrations en couleur | <input type="checkbox"/> Quality of print varies/
Qualité inégale de l'impression |
| <input type="checkbox"/> Bound with other material/
Relié avec d'autres documents | <input type="checkbox"/> Includes supplementary material/
Comprend du matériel supplémentaire |
| <input type="checkbox"/> Tight binding may cause shadows or distortion
along interior margin/
La reliure serrée peut causer de l'ombre ou de la
distorsion le long de la marge intérieure | <input type="checkbox"/> Only edition available/
Seule édition disponible |
| <input type="checkbox"/> Blank leaves added during restoration may
appear within the text. Whenever possible, these
have been omitted from filming/
Il se peut que certaines pages blanches ajoutées
lors d'une restauration apparaissent dans le texte,
mais, lorsque cela était possible, ces pages n'ont
pas été filmées. | <input type="checkbox"/> Pages wholly or partially obscured by errata
slips, tissues, etc., have been refilmed to
ensure the best possible image/
Les pages totalement ou partiellement
obscurcies par un feuillet d'errata, une pelure,
etc., ont été filmées à nouveau de façon à
obtenir la meilleure image possible. |
| <input type="checkbox"/> Additional comments:/
Commentaires supplémentaires: | |

This item is filmed at the reduction ratio checked below/
Ce document est filmé au taux de réduction indiqué ci-dessous.

10X	12X	14X	16X	18X	20X	22X	24X	26X	28X	30X	32X
			/								

The copy filmed here has been reproduced thanks to the generosity of:

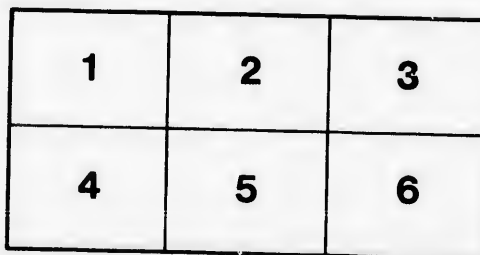
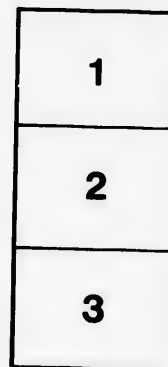
Douglas Library
Queen's University

The images appearing here are the best quality possible considering the condition and legibility of the original copy and in keeping with the filming contract specifications.

Original copies in printed paper covers are filmed beginning with the front cover and ending on the last page with a printed or illustrated impression, or the back cover when appropriate. All other original copies are filmed beginning on the first page with a printed or illustrated impression, and ending on the last page with a printed or illustrated impression.

The last recorded frame on each microfiche shall contain the symbol \rightarrow (meaning "CONTINUED"), or the symbol ∇ (meaning "END"), whichever applies.

Maps, plates, charts, etc., may be filmed at different reduction ratios. Those too large to be entirely included in one exposure are filmed beginning in the upper left hand corner, left to right and top to bottom, as many frames as required. The following diagrams illustrate the method:



L'exemplaire filmé fut reproduit grâce à la générosité de:

Douglas Library
Queen's University

Les images suivantes ont été reproduites avec le plus grand soin, compte tenu de la condition et de la netteté de l'exemplaire filmé, et en conformité avec les conditions du contrat de filmage.

Les exemplaires originaux dont la couverture en papier est imprimée sont filmés en commençant par le premier plat et en terminant soit par la dernière page qui comporte une empreinte d'impression ou d'illustration, soit par le second plat, selon le cas. Tous les autres exemplaires originaux sont filmés en commençant par la première page qui comporte une empreinte d'impression ou d'illustration et en terminant par la dernière page qui comporte une telle empreinte.

Un des symboles suivants apparaîtra sur la dernière image de chaque microfiche, selon le cas: le symbole \rightarrow signifie "A SUIVRE", le symbole ∇ signifie "FIN".

Les cartes, planches, tableaux, etc., peuvent être filmés à des taux de réduction différents. Lorsque le document est trop grand pour être reproduit en un seul cliché, il est filmé à partir de l'angle supérieur gauche, de gauche à droite, et de haut en bas, en prenant le nombre d'images nécessaire. Les diagrammes suivants illustrent la méthode.

HANDBOOK
CANADIAN
EXCURSION TOURS

GRAND TRUNK RAILWAY
RICHMOND & ONTARIO NAVIGATION CO.

RATES OF FARE FOR SEASON OF
1880.

Tickets and information may be obtained at

No. 280 Washington Street.

W. C. JILLMAN,
New England Pass. Agt.

H. G. FOULKES, Ticket Agt. N. J. GRACE, Trns. Agt.

J. HICKSON, Gen. Managr. G. T. Ry. Montreal
L. J. SEARGEANT, Traffic Manager G. T. Ry. Montreal
ALEX. MILLOY, Traffic Manager E. & O. N. Co. Montreal
W. WAINWRIGHT, Gen. Pass. Agent G. T. Ry. Montreal

1880. 1880. 1880

The EDITH *and* LORNE FIERCE
COLLECTION *of* CANADIANA



Queen's University at Kingston



ROAD TRIP



THE TICKETS

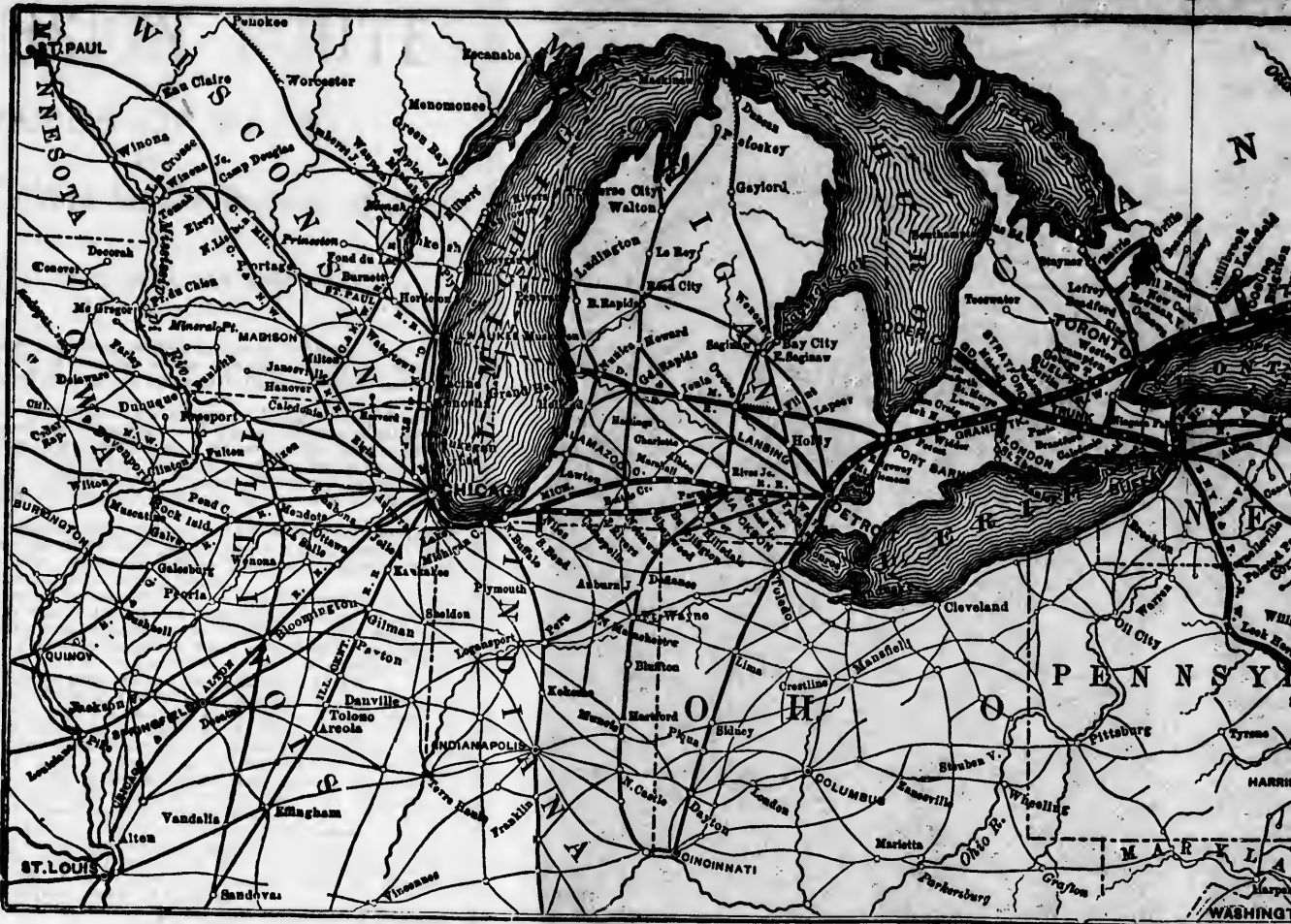
BE OBTAINED AT 280 WASHINGTON STREET, BOSTON

AND NEW ENGLAND AGENTS.

FACE CARS ON ALL LINES

GRAND TRUNK

RATES OF FARE can be supplied to ANY POINTS in the West,
upon application to this office.



THROUGH TICKETS

AND ALL NECESSARY INFORMATION CAN BE OBTAINED AT 280 WASHINGTON STREET, BOSTON.

W. C. FALLMAN, New England Agent.

DINING AND PALACE CARS on all EXPRES

March 180 J. Carbone 60/1/P 2399

GRAND TRUNK RAILWAY.



THE SHORTEST AND MOST DIRECT ROUTE TO ALL POINTS

EAST AND WEST.

TICKETS FOR SALE AT ALL PRINCIPAL TICKET OFFICES IN NEW ENGLAND.

EXPRESS TRAINS from MONTREAL WEST.

G R A M



THROUGH

AND ALL NECESSARY INFORMATION CAN

W. C. T. A. I. M.

DINING AND PAID

upon application to this office. **RAILS OF L.V.B.E. CAN BE SUPPLIED TO VIA POINTS IN THE WEST.**

EX
Tour

Agents insert the
of the pr
already c
The
Prescott
boat or
Ontario
from Ch
exchange
Agent at
Ticket
Montrea
The
visit the
Agent
Grand T
of Steam
before.
and has
Pullman
A Pu
Train fro
season) p
Ticket
than abou
Day Line
June, an
Lines ce
earlier o
Agent
coupons
must be r
tickets, w
No o
special
Parti
routes fr
iston, an
to Toron
Railway,
Ontario,"
rence,"

LIST OF
EXCURSION ROUTES
 AND
RATES OF FARE
 FOR
Tourists' Tickets for the Season of 1880

TICKETS GOOD UNTIL NOVEMBER 1st.

Agents will please note that in issuing forms marked * they must insert the paster or slip of coupons of the number designated, in place of the present coupons reading via stage to or from Profile House if not already done.

The Coupons between Toronto and Kingston, Kingston and Prescott, Prescott and Montreal, and Montreal and Quebec, are valid either by boat or rail, and they are likewise good either by the Richelieu and Ontario Navigation Co.'s Line from Toronto, or by the South Shore Line from Charlotté. The Coupons between Niagara Falls and Toronto can be exchanged for All Rail Tickets, via G. W. R., on payment of 60c. to the Agent at the Falls.

Tickets include meals on Lake Ontario and the River St. Lawrence to Montreal, but between Montreal and Quebec they are for passage only.

The Tickets via Lake Champlain afford Tourists an opportunity to visit the Ausable Chasm. (See Form X No. 96.)

Agents are requested to specially inform the Passengers that the Grand Trunk Railway and Richelieu and Ontario Navigation Co.'s Line of Steamers offer better inducements to the travelling public than ever before. The Grand Trunk Railway has been relaid with Steel Rails, and has been equipped with New Locomotives and First-class Cars Pullman Palace and Dining Cars are run on all Express Trains.

A Pullman Palace Sleeping Car will be attached to the Evening Train from Toronto, and will run through to Kingston Wharf, (early in season) passengers can remain in the Car until the Boat arrives.

Tickets reading over the Mt. Washington R.R. are not available earlier than about the middle of June or after about the 20th of September. The Day Line and Lake George Steamers commence their trips about the 1st of June, and passengers should be reminded that many of the Steamboat Lines cease running, or make irregular trips, after about the 1st of October, earlier or later according to the severity or mildness of the season.

Agents will please notify passengers holding tickets without transfer coupons (N.Y. C. R.R. Depot, Lewiston to the wharf) that application must be made without fail at the Ticket Offices at the Falls for transfer tickets, which will be supplied Free of Charge.

No deviation from the rates given will be allowed without special authority.

Parties holding our THROUGH EXCURSION TICKETS, have choice of routes from Niagara Falls, viz.: via New York Central Railway to Lewiston, and Steamer to Toronto (or Great Western Railway via Hamilton to Toronto, on payment of 60c.), connecting there with Grand Trunk Railway, or Royal Mail Line of Steamers passing through "Lake Ontario," the "Thousand Islands," and "Rapids of the River St. Lawrence," by daylight, to Ogdensburg or Montreal.

3029/32

RATES OF FARE

FROM

Boston to Niagara Falls

NOTICE.—The following rates of fare are given separately from Boston to Niagara Falls and from Niagara Falls to destination. To make the through rate for round trip, both rates must be added.

Via Boston & Albany and N.Y. Central Railways.....	\$11.15
" Fitchburg, Rutland, Saratoga and N.Y. Central Railways....	11.15
" Fitchburg & Ho sao Tunnel Line. and New York Central R.R.,	11.15
" Any All-Rail Route to N.Y. City, Hudson River, and N.Y.C. R'y	15.00
" " " Erie Railway.....	14.25
" Sound Lines to New York, Hudson Riv. & N.Y.C. R.R. or Erie R'y	11.15

Routes and Rates of Fare from Niagara Falls.

BOSTON.

Form X 11. Via Toronto, Montreal, Quebec, Gorham and Portland..... **\$23.00**

BOSTON.

Form X 12. Via Toronto, Montreal, Jt. Johns, Burlington, Bellows Falls and Fitchburg..... **\$20.00**

BOSTON.

Form X 13. Via Toronto, Montreal, Gorham and Portland, **\$20.00**

BOSTON.

Form X 14. Via Toronto, Montreal, St. Johns, White River Junction, Concord and Nashua. **\$20.00**

BOSTON.

Form X 15. Via Toronto, Ogdensburg, St. Albans and Vermont Central Line..... **\$20.00**

BOSTON.

Form X 16. Via Toronto, Montreal, Rouse's Point, Plattsburgh, Lake Champlain to Fort Ticonderoga, then by R. R. via Saratoga, Rutland, Bellows Falls, and Fitchburg **\$26.25**

BOSTON.

*1 *Form X 17.* Via Toronto, Montreal, Quebec, Sherbrooke, Newport, Wells River, Bethlehem, Profile House, Bethlehem, Fabyan House, Crawford House and Base of Mountain, Tip Top House by Mt. Washington R.R., Stage to Glen House and Gorham, thence via Portland **\$41.50**

BOSTON.

Form X 18. Via Toronto, Montreal, Rouse's Point, Plattsburgh, Lake Champlain, Lake George, Saratoga, Albany, People's Line of Steamers to New York, and Sound Steamers to Boston..... **\$28.50**

Routes and Rates of Fare from Niagara Falls. 3

BOSTON.

*1 **Form X 35.** Via Toronto, Montreal, St. John's, White River Junction, Wells River, Bethlehem, Profile House, Bethlehem, Fabyan House, Crawford House and back to Fabyans, thence via Concord, Nashua, and Lowell..... **\$30.75**

BOSTON.

Form X 38. Via Toronto, Montreal, Rouse's Point, Plattsburgh, Lake Champlain, Burlington, Bellows Falls, and Fitchburg..... **\$21.50**

BOSTON.

Form X 39 Via Toronto, Ogdensburg, Mooer's Junction, Plattsburgh, Lake Champlain, Burlington, Bellows Falls and Fitchburg **\$20.25**

BOSTON.

Form X 136. Via Toronto, Montreal, Sherbrooke, White River Junction, Concord and Nashua..... **\$21.00**

BOSTON.

Form X 137. Via Toronto, Montreal, Quebec, Sherbrooke, White River Junction, Concord and Nashua.... **\$24.00**

BOSTON.

Form X 142. Via Toronto, Montreal, Groveton, Concord and Nashua **\$25.25**

BOSTON.

Form X 145. Via Toronto, Montreal, Quebec, Groveton, Concord and Nashua..... **\$26.25**

BOSTON.

*2 **Form X 147.** Via Toronto, Montreal, Groveton, Fabyan House, Bethlehem, Profile House, Bethlehem, thence via Concord and Nashua..... **\$29.00**

BOSTON.

*2 **Form X 154.** Via Toronto, Montreal, Gorham, Stages to Glen House and Summit, Summit to Base by Mt. Washington R.R., Base to Fabyan House, Bethlehem, Profile House, Bethlehem, thence via Concord and Nashua..... **\$39.00**

BOSTON.

Form X 183. Via Toronto, Montreal, Rouse's Point, Plattsburgh, Lake Champlain to Burlington, Rail to Montpelier, Wells River, Concord, Nashua, and Lowell. **\$25.00**

BOSTON.

*1 **Form 2572.** Via Toronto, Montreal, St. Johns, Montpelier, Wells River, Bethlehem, Profile House, Bethlehem, Fabyan's, Crawford House, and back to Fabyan's, thence via Concord, Nashua and Lowell..... **\$30.75**

BOSTON.

Form 2674. Via Toronto, Montreal, Quebec, Intercolonial Railway to Halifax, St. John, Steamer to Portland, and Rail to Boston..... **\$35.25**

BOSTON.

Form 2675. Via Toronto, Montreal, Quebec, Intercolonial Railway to Point du Chene, Steamer to Summerside, P. E. I., Rail to Charlottetown, Steamer to Pictou, Rail to Halifax and St. John, Steamer to Portland, and Rail to Boston..... **\$39.25**

Routes and Rates of Fare from Niagara Falls.

BOSTON.

Form 2910. Via Toronto, Montreal, St. Johns, St. Albans, Burlington, Lake Champlain, Lake George, Caidwell, Glens Falls, Saratoga, Albany, Steamer to New York, and Sound Steamer to Boston **\$28.25**

BOSTON.

Form 2914. Via Toronto, Montreal, Quebec, Sherbrooke, Newport, Wells River, Concord, Nashua and Lowell..... **\$24.00**

BOSTON.

Form 2961. Via Toronto, Montreal, Groveton, Fabyan's, Bethlehem, Profile House, Stage to Plymouth, thence via Concord, Nashua and Lowell..... **\$29.50**

BOSTON.

Form 2962. Via Toronto, Montreal, Gorham, Stages to Glen House and Summit Mt. Washington, Summit to Base by Mt. Washington R.R., Fabyan's, Bethlehem, Profile House, Stage to Plymouth, thence via Concord, Nashua and Lowell..... **\$39.50**

CRAWFORD HOUSE.

Form X 49. Via Toronto, Montreal, St. Johns, White River Junction, Wells River and Fabyan House..... **\$20.50**

CRAWFORD HOUSE.

Form X 50. Via Toronto, Ogdensburg, St. Albans, White River Junction, Wells River and Fabyan House . **\$20.00**

CRAWFORD HOUSE.

Form X 100. Via Toronto, Montreal, Gorham, Stages to Glen House and Tip Top House, Mt. Washington R.R. to Base of Mountain, Fabyan's and Crawford House **\$29.25**

CRAWFORD HOUSE.

Form X 101. Via Toronto, Montreal, Quebec, Gorham, Stages to Glen House and Tip Top House, Mount Washington R.R. to Base of Mountain, Fabyan's and Crawford House **\$32.25**

CRAWFORD HOUSE.

Form 2573. Via Toronto, Montreal, St. Johns, Montpelier, Wells River and Fabyan House..... **\$20.00**

FABYAN'S.

Form 2911. Via Toronto, Montreal, St. Johns, St. Albans, Montpelier and Wells River..... **\$19.75**

FABYAN'S.

*1 *Form 2912.* Via Toronto, Montreal, St. Johns, St. Albans, Montpelier, Wells River, Bethlehem, Profile House and Bethlehem..... **\$22.75**

GORHAM.

Form X 9. Via Toronto, Montreal, Quebec and Grand Trunk Railway..... **\$20.50**

GORHAM.

Form X 13. Via Toronto, Montreal and Grand Trunk Railway direct..... **17.50**

Routes and Rates of Fares from Niagara Falls. 5

KINGSTON.

Form X 2. Via Rail or Steamer..... \$7.00

LANCASTER, N.H.

Form X 98. Via Toronto, Montreal, Quebec and Groveson..... \$19.00

LANCASTER, N.H.

Form 2904. Via Toronto, Montreal, St. Johns, St. Albans, Montpelier, Wells River and Littleton..... \$19.00

MONTREAL.

Form X 6. Via Toronto, Rail or Steamer..... \$12.00

NEW YORK.

Form X 19. Via Toronto, Montreal, Rouse's Point, Plattsburg, Lake Champlain, Lake George, Saratoga, Troy and N. Y. C. & Hudson River R.R. \$27.00

NEW YORK.

Form X 20. Via Toronto, Montreal, Rouse's Point, Plattsburg, Lake Champlain, Lake George, Saratoga, Albany, and People's Line of Steamers \$25.50

NEW YORK.

Form X 21. Via Toronto, Montreal, Rouse's Point, Plattsburg, Lake Champlain, Saratoga, Troy and N. Y. C. and Hudson River R.R..... \$23.00

NEW YORK.

Form X 22. Via Toronto, Montreal, Rouse's Point, Plattsburg, Lake Champlain, Saratoga, Albany, and People's Line of Steamers..... \$21.50

NEW YORK.

Form X 24. Via Toronto, Montreal, Gorham, Portland and Boston, Rail and Sound Steamers..... \$23.00

NEW YORK.

Form X 25. Via Toronto, Montreal, Quebec, Gorham, Portland and Boston, Rail and Sound Steamers \$26.00

NEW YORK.

Form X 26. Via Toronto, Montreal, Rouse's Point, Plattsburg, Lake Champlain, Lake George, Saratoga, Albany, and Day Line Steamers..... \$26.00

NEW YORK.

Form X 27. Via Toronto, Montreal, Rouse's Point, Plattsburg, Lake Champlain, Saratoga, Albany, and Day Line Steamers..... \$22.00

NEW YORK.

*1 *Form X 31.* Via Toronto, Montreal, Quebec, Sherbrooke, Newport, Wells River, Bethlehem, Profile House, Bethlehem, Fabyan House, Crawford House and Base of Mountain, Tip-Top House by Mt. Washington R.R., Stages to Glen House and Gorham, Rail to Portland, Boston, thence via Rail and Sound Steamer.. \$44.75

NEW YORK.

*2 *Form X 36.* Via Toronto, Montreal, Quebec, Gorham, Stage to Glen House and Tip-Top House, Mt. Washington R.R. to Base of Mountain, Rail to Crawford House and Fabyan House, Bethlehem, Profile House, Bethlehem, thence via Concord, Nashua, Boston, Rail and Sound Steamer..... \$46.75

6 Routes and Rates of Fare from Niagara Falls.

NEW YORK.	
*1 Form X 37. Via Toronto, Montreal, Quebec, Sherbrooke, Newport, Wells River, Bethlehem, Profile House, Bethlehem, Rail to Fabyan House, Crawford House and back to Fabyan's, thence via Concord, Nashua, Boston, Rail and Sound Steamer.....	\$37.00
NEW YORK.	
Form X 42. Via Toronto, Montreal, St. Johns, Burlington, Lake Champlain, Ft. Ticonderoga, Saratoga, Albany, and Day Line Steamers.....	\$22.00
NEW YORK.	
Form X 43. Via Toronto, Montreal, St. Johns, Burlington, Lake Champlain, Lake George, Saratoga, Albany, and Day Line Steamers.....	\$26.00
NEW YORK.	
Form X 44. Via Toronto, Ogdensburg, St. Albans, Burlington, Lake Champlain, Ft. Ticonderoga, Saratoga, Albany and Day Line Steamers.....	\$22.00
NEW YORK.	
Form X 45. Via Toronto, Ogdensburg, St. Albans, Burlington, Lake Champlain, Lake George, Saratoga and Day Line Steamers	\$26.00
NEW YORK.	
Form X 46. Via Toronto, Montreal, St. Johns, Burlington, Bellows Falls and Springfield.....	\$22.00
NEW YORK.	
Form X 51. Via Toronto, Ogdensburg, St. Albans, White River Junction and Springfield.....	\$22.00
NEW YORK.	
Form X 138. Via Toronto, Montreal, Sherbrooke, White River Junction, South Vernon and Springfield..	\$23.00
NEW YORK.	
Form X 139. Via Toronto, Montreal, Quebec, Sherbrooke, White River Junction, S. Vernon and Springfield,	\$26.00
NEW YORK.	
Form X 140. Via Toronto, Montreal, Sherbrooke, White River Junction, Concord, Nashua, Boston, Rail and Sound Steamer	\$24.00
NEW YORK.	
Form X 141. Via Toronto, Montreal, Quebec, Sherbrooke, White River Junction, Concord, Nashua, Boston, Rail and Sound Steamer.....	\$27.00
NEW YORK.	
Form X 150. Via Toronto, Montreal, Groveton, Concord, Nashua, Lowell, Mansfield, Weir Junction to Fall River or Newport, and thence by Steamer.....	\$27.50
NEW YORK.	
Form X 155. Via Toronto, Ogdensburg, St. Albans, Burlington Lake Champlain, Ft. Ticonderoga, Saratoga, Troy and N. Y. C. & H. R. R.R.....	\$23.00
NEW YORK.	
Form X 156. Via Toronto, Ogdensburg, St. Albans, Burlington, Lake Champlain, Lake George, Glens Falls, Saratoga, Troy and N. Y. C. & H. R. R.R.....	\$26.50

NE
NE
*3
NE
*3
NE
NE
NE
*1
NE
*2
NE
NE
*1

Routes and Rates of Fare from Niagara Falls. 7

NEW YORK.

Form X 185. Via Toronto, Montreal, Rouse's Point, Plattsburg, Lake Champlain to Burlington, Central Vermont R.R. to New York via South Vernon and Springfield **\$24.75**

NEW YORK.

*3 *Form X 186.* Via Toronto, Montreal, Quebec, Gorham, Stages to Glen House and Tip-Top House, Mt. Washington R.R. to Base, Rail to Crawford House, Fabyan House, Bethlehem, Profile House, Bethlehem, Wells River, Montpelier, Burlington, Lake Champlain, Lake George, Glens Falls, Saratoga and Albany, and Day Line Steamers..... **\$51.75**

NEW YORK.

*3 *Form X 187.* Via Toronto, Montreal, Quebec, Gorham, Stages to Glen House and Tip-Top House, Mt. Washington R.R. to Base, Rail to Crawford House, Fabyan House and Bethlehem, Profile House, Bethlehem, Wells River, Montpelier, Burlington, Lake Champlain, Lake George, Glens Falls, Saratoga and Albany, and People's Line Steamers..... **\$51.25**

NEW YORK.

Form X 188. Via Toronto, Montreal, Quebec, Sherbrooke, Wells River, Montpelier, Burlington, Lake Champlain, Lake George, Glens Falls, Saratoga, Albany, and Day Line Steamers..... **\$34.75**

NEW YORK.

Form X 189. Via Toronto, Montreal, Quebec, Sherbrooke, Wells River, Montpelier, Burlington, Lake Champlain, Lake George, Glens Falls, Saratoga, Albany, and People's Line Steamers..... **\$34.25**

NEW YORK.

*1 *Form X 190.* Via Toronto, Montreal, Quebec, Sherbrooke, Wells River, Bethlehem, Profile House, Bethlehem, Fabyan's, Crawford House and back to Fabyan's, Wells River, White River Junction, South Vernon and Springfield **\$34.00**

NEW YORK.

*2 *Form X 191.* Via Toronto, Montreal, Gorham, Stages to Glen House and Tip Top House, Mt. Washington R.R. to Base, Fabyan's, Bethlehem, Profile House, Bethlehem, Concord, Nashua, Lowell, Boston, Rail and Sound Steamer **\$43.00**

NEW YORK.

Form X 192. Via Toronto, Montreal, Groveton, Fabyan's, Base of Mountain, Mt. Washington R.R. to Summit, Stages to Glen House and North Conway, E. R.R. to Boston, Rail and Sound Steamer..... **\$37.25**

NEW YORK.

*1 *Form X 193.* Via Toronto, Montreal, Rouse's Point, Plattsburg, Lake Champlain to Burlington, Rail to Montpelier, Wells River, Bethlehem, Profile House, Bethlehem, Fabyan's, Crawford House and Base of Mountain, Mt. Washington R.R. to Summit, Stages to Glen House and Glen Station, Rail to Portland and Boston, Rail and Sound Steamer..... **\$43.25**

8 Routes and Rates of Fare from Niagara Falls.

NEW YORK.

*1 **Form X 194.** Via Toronto, Montreal, Quebec, Sherbrooke, Wells River, Bethlehem, Profile House, Bethlehem, Fabyan's, Crawford House and back to Fabyan's, Concord, Nashua, Lowell and Boston, Rail and Sound Steamer..... **\$37.25**

NEW YORK.

Form X 195. Via Toronto, Montreal, Quebec, Gorham, Stages to Glen House and Tip-Top House and back to Glen House, Glen Station, Rail to Portland and Boston, Rail and Sound Steamer..... **\$38.25**

NEW YORK.

*1 **Form X 197.** Via Toronto, Montreal, Sherbrooke, Wells River, Bethlehem, Profile House, Bethlehem, Fabyan's, Crawford's, North Conway, Boston via E. R.R., Rail and Sound Steamer..... **\$33.00**

NEW YORK.

Form X 198. Via Toronto, Montreal, Quebec, Gorham, Stages to Glen House and North Conway, Boston via E. R.R., Rail and Sound Steamer..... **\$33.00**

NEW YORK.

*1 **Form X 199.** Via Toronto, Montreal, Sherbrooke, Wells River, Bethlehem, Profile House, Bethlehem, Fabyan House, Base of Mountain, Mt. Washington R.R. to Summit of Mt. Washington and return, Rail to Crawford House, North Conway, Wolfboro, Steamer to Weirs, Rail to Concord, Nashua, Lowell and Boston, Rail and Sound Steamer..... **\$44.00**

NEW YORK.

Form X 201. Via Toronto, Montreal, Rouse's Point, Plattsburg, Lake Champlain to Burlington, Rail to Montpelier, Wells River, Fabyan's, Base of Mountain, Mt. Washington R.R. to Summit and back, Rail to Crawford, North Conway. Boston via E. R.R., Rail and Sound Steamer..... **\$39.25**

NEW YORK.

*1 **Form X 202.** Via Toronto, Montreal, Sherbrooke, Wells River, Bethlehem, Profile House, Bethlehem, Fabyan's, Crawford House, Portland and Boston, Rail and Sound Steamer..... **\$33.00**

NEW YORK.

Form 2678. Via Toronto, Montreal, Quebec, Inter. Ry. to Halifax, St. John, Steamer to Portland, Rail to Boston, and Sound Steamer..... **\$38.25**

NEW YORK.

Form 2679. Via Toronto, Montreal, Quebec, Intercolonial Ry. to Point du Chene, Steamer to Summerside, Rail to Charlottetown, Steamer to Pictou, Rail to Halifax, St. John, Steamer to Portland, Rail to Boston, and Sound Steamer **\$42.25**

NEW YORK.

Form 2751. Via Toronto, Montreal, Quebec, Gorham, Glen House, Summit Mt. Washington, Glen House, Glen Station, Crawford House, Fabyan's, Wells River, White River Junction, Springfield, New Haven..... **\$42.00**

Routes and Rates of Fare from Niagara Falls.

9

NEW YORK.

Form 2752. Via Toronto, Montreal, St. Johns, Rutland, State Line, Troy, Albany, and via New York Central and Hudson River R.R..... **\$23.00**

NEW YORK.

Form 2753. Via Toronto, Montreal, St. Johns, Rutland, State Line, Troy, Albany, People's Line Steamers, **\$21.50**

NEW YORK.

Form 2754. Via Toronto, Montreal, St. Johns, Rutland, State Line, Troy, Albany, Day Line Steamers..... **\$22.00**

NEW YORK.

*1 *Form 2755.* Via Toronto, Montreal, St. Johns, Montpelier, Wells River, Bethlehem, Profile House, Bethlehem, Fabyan's, Crawford House, North Conway, Portland, Boston, Sound Steamer..... **\$33.25**

NEW YORK.

*1 *Form 2756.* Via Toronto, Montreal, St. Johns, Montpelier, Wells River, Bethlehem, Profile House, Bethlehem, Fabyan's, Crawford House, Fabyan's, Summit Mount Washington, Glen House, Glen Station, North Conway, Boston, Sound Steamer..... **\$42.75**

NEW YORK.

Form 2905. Via Toronto, Montreal, St. Johns, St. Albans, Burlington, Leicester Junction, Ticonderoga, Roger's Rock Hotel, Lake George, Caldwell, Glens Falls, Saratoga and N. Y. C. & H. R. R.R..... **\$27.00**

NEW YORK.

Form 2906. Via Toronto, Montreal, St. Johns, St. Albans, Bellows Falls, Miller's Falls, New London, and Norwich Line Steamers..... **\$22.00**

NEW YORK.

Form 2907. Via Toronto, Montreal, Quebec, Gorham, Glen House, Summit Mt. Washington, Base, Fabyan's Crawford House and back to Fabyan's, Wells River, White River Junction, Bellows Falls, Miller's Falls, New London, and Norwich Line Steamers..... **\$41.60**

NEW YORK.

*1 *Form 2908.* Via Toronto, Montreal, St. Johns, St. Albans, Montpelier, Wells River, Bethlehem, Profile House, Bethlehem, Fabyan's, Crawford House, back to Wells River, White River Junction, Bellows Falls, Miller's Falls, New London, and Norwich Line Steamers **\$33.50**

NEW YORK.

Form 2960. Via Toronto, Montreal, Quebec, Gorham, Stages to Glen House and Summit Mt. Washington, Summit to Base by Mt. Washington R.R.. Fabyan's, Crawford House, Fabyan's, Bethlehem, Profile House, Stage to Plymouth, thence via Concord, Nashua, Lowell, Boston, and Keil and Sound Steamer..... **\$46.50**

NEW YORK.

Form 2963. Via Toronto, Montreal, Gorham, Stages to Glen House and Summit Mt. Washington, Summit to Base by Mt. Washington R.R., Fabyan's, Bethlehem, Profile House, Stage to Plymouth, thence via Concord, Nashua, Lowell, Boston and Sound Steamer..... **\$42.75**

Routes and Rates of Fare from Niagara Falls.

OGDENSBURG.	
<i>Form X 5.</i> Via Toronto, Rail or Steamer.....	\$8.65
PORTLAND.	
<i>Form X 10.</i> Via Toronto, Montreal, Quebec and Gorham,	\$21.50
PORTLAND.	
<i>Form X 14.</i> Via Toronto, Montreal and Gorham direct,	\$18.50
PORTLAND.	
<i>Form X 40.</i> Via Toronto, Montreal and Gorham, and return by Grand Trunk Railway.....	\$28.00
PRESCOTT.	
<i>X 4 Form</i> Via Toronto, Rail or Steamer.....	\$8.65
PRESCOTT.	
<i>Form X 90.</i> Via Suspension Bridge, Rail to Toronto, and Steamer or Rail.....	\$9.25
PRESCOTT.	
<i>Form X 91.</i> Via Suspension Bridge, Rail to Toronto, and Steamer or Rail.....	\$9.25
PRESCOTT.	
<i>Form X 92.</i> Via Suspension Bridge, Steamer from Niagara to Toronto, and Steamer or Rail.....	\$9.25
PRESCOTT.	
<i>Form X 93.</i> Via Suspension Bridge, Steamer from Niagara to Toronto, and Steamer or Rail.....	\$9.25
PRESCOTT.	
<i>Form 2797.</i> Via N.Y.C. R.R. and Steamer from Char- lotte.....	8.65
PROFILE HOUSE.	
*4 <i>Form X 47.</i> Via Toronto, Montreal, St. Johns, White River Junction, Wells River and Bethlehem.....	\$21.50
PROFILE HOUSE.	
*4 <i>Form X 48.</i> Via Toronto, Ogdensburg, St. Albans, White River Junction, Wells River and Bethlehem.....	\$21.00
PROFILE HOUSE.	
<i>Form X 102.</i> Via Toronto, Montreal, Gorham, Stages to Glen House and Tip Top House, Mt. Washington R.R. to Base of Mountain, Rail to Crawford House, Fabyan House, Bethlehem	\$31.75
PROFILE HOUSE.	
<i>Form X 103.</i> Via Toronto, Montreal, Quebec, Gorham, Stages to Glen House and Tip Top House, Mt. Washing- ton R.R. to base of Mountain, Rail to Crawford House, Fabyan House, Bethlehem.....	\$34.75
PROFILE HOUSE.	
*4 <i>Form 2575.</i> Via Toronto, Montreal, St. Johns, Mont- pelier, Wells River, and Bethlehem.....	\$21.00
QUÉBEC.	
<i>Form X 7.</i> Via Toronto, Rail or Steamer.....	\$14.50
QUÉBEC and back to MONTREAL.	
<i>Form X 8.</i> Via Toronto, Rail or Steamer.....	\$16.00

Routes and Rates of Fare from Niagara Falls. 11

SARATOGA

Form X 18. Via Toronto, Montreal, Rouse's Point, Plattsburg, Lake Champlain and Lake George..... **\$22.50**

SARATOGA.

Form X 23. Via Toronto, Montreal, Rouse's Point, Plattsburg, Lake Champlain and Fort Ticonderoga.... **\$19.75**

SARATOGA.

3 Form X 28.* Via Toronto, Montreal, Gorham, Stages to Glen House and Tip Top House, Mt. Washington R.R. to Base of Mountain, Crawford and Fabyan Houses, Bethlehem, Profile House, Bethlehem, Wells River, White River Junction, Burlington, and via Lake Champlain, Lake George and Glens Falls..... **\$47.50

SARATOGA.

Form X 52. Via Toronto, Montreal, St. Johns, Burlington, Lake Champlain and Fort Ticonderoga..... **\$19.75**

SARATOGA.

Form X 53. Via Toronto, Montreal, St. Johns, Burlington, Lake Champlain and Lake George..... **\$22.50**

SARATOGA.

Form X 54. Via Toronto, Ogdensburg, St. Albans, Burlington, Lake Champlain and Fort Ticonderoga.... **\$19.75**

SARATOGA.

Form X 55. Via Toronto, Ogdensburg, St. Albans, Burlington, Lake Champlain and Lake George..... **\$22.50**

SARATOGA.

Form 2570. Via Toronto, Montreal, Gorham, Stage to Glen House and Summit, Mt. Washington R.R. to Base, Fabyan's, Bethlehem, Profile House, Plymouth, Wells River, Montpelier, Burlington, Lake Champlain, Lake George and Glens Falls... .. **\$47.50**

SARATOGA.

Form 2909. Via Toronto, Montreal, St. Johns, St. Albans, Burlington, Rutland and Whitehall... .. **\$19.75**

ls.

\$8.65

\$21.50

\$18.50

\$28.00

\$8.65

\$9.25

\$9.25

\$9.25

\$9.25

8.65

\$21.50

\$21.00

\$31.75

\$34.75

\$21.00

\$14.50

\$16.00

SIDE ISSUES
TO
RIVER SAGUENAY,
THOUSAND ISLANDS,
RANGELEY LAKES,
Rapids of River St. Lawrence, &c.

CRAWFORD HOUSE to SARATOGA.

*5 *Form 2571.* Via North Conway, Wolfboro, Weirs, Plymouth, Stage to Profile House, Bethlehem, Wells River, Montpelier and Burlington, Lake Champlain, Lake George and Glens Falls **\$23.00**

GLEN HOUSE TO UPPER DAM and return.

Form 2790. Via Gorham, Bryant's Pond, Andover and South Arm, returning same way..... **\$12.00**

GLEN HOUSE TO UPPER DAM and return, via

Dixville Notch. Form 2791. Via Gorham, Bry Pond, Andover, South Arm, Upper Dam, Middle Dam, Sunday Cove, Errol Dam, Colebrook, No. Stratford and Gorham, **\$14.50**

GLEN HOUSE TO UPPER DAM and return, via

Dixville Notch. Form 2792. Reverse of 2791..... **\$14.50**

GLEN HOUSE TO UPPER DAM and return.

Form 2793. Via Gorham, Bethel, Upton, Sunday Cove, Middle Dam and Upper Dam, returning same way..... **\$14.03**

GLEN HOUSE TO UPPER DAM and return.

Form 2794. Via Gorham, Bethel, Upton, Sunday Cove, Middle Dam, Upper Dam, South Arm, Andover, Bryant's Pond and Gorham..... **\$13.00**

GLEN HOUSE TO UPPER DAM and return.

Form 2795. Reverse of 2794..... **\$13.00**

GLEN HOUSE TO UPPER DAM and return.

Form 2798. Via Gorham, Bethel, Upton, Sunday Cove, Middle Dam, Upper Dam, Middle Dam, Sunday Cove, Errol Dam, Colebrook, No. Stratford and Gorham..... **\$15.50**

GLEN HOUSE TO MONTREAL. Form X 157..... \$8.70

GLEN HOUSE TO QUEBEC. Form X 158..... \$9.45

GLEN HOUSE TO PORTLAND. Form X 160..... \$5.00

GLEN HOUSE TO PROFILE HOUSE. Form 161, \$5.65

GLEN HOUSE TO UPPER DAM and return.

Form 2799. Reverse of 2798..... **\$15.50**

MONTREAL to CORNWALL and return.

Form 2501...... **\$3.35**

MONTREAL to KINGSTON and return.

E 2500. Grand Trunk Railway to Kingston, Steamer through Thousand Islands and Rapids of St. Lawrence to Montreal..... **\$8.00**

MONTREAL to LACHINE and return.

Rail to Lachine, Steamer (shooting the Rapids)..... **\$.50**

A train Leaves Montreal at 7 A.M., daily, and connects at Lachine with the new steamer "Beauharnols," which leaves at 8 A.M., shoots the "Lachine Rapids" (the finest of the St. Lawrence), passes under the Victoria Bridge, and arrives at Montreal about 9 A.M. This is the only boat which runs the Lachine Rapids during the entire season, and which can be depended on to run at a regularly advertised hour. The train arrives at Lachine at 7.30 A.M., which gives passengers ample time to obtain a comfortable breakfast at a hotel directly opposite the Steamboat Wharf.

MONTREAL to OTTAWA.

Form 2980. Via G. T. Ry. to Lachine, O. R. N. Co. Steamer to Ottawa..... **\$2.50**

MONTREAL to OTTAWA and return.

Form 2982. Via G. T. Ry. to Lachine, O. R. N. Co. Steamer to Ottawa, returning by O. R. N. Co. Steamer to Lachine, G. T. R. or Steamer to Montreal..... **\$4.00**

MONTREAL to PRESCOTT and return.

Form 2502...... **\$5.60**

MONTREAL to QUEBEC and back.

Form X 41. Via Rail or Steamer..... **\$4.00**

NEW YORK to PHILADELPHIA.

Form 2577. Via Pennsylvania R.R..... **\$2.50**

NEW YORK to PHILADELPHIA and return.

Form 2578. Via Pennsylvania R.R..... **\$5.00**

OTTAWA to MONTREAL.

Form 2979. Via O. R. N. Co. Steamer to Lachine, G. T. Ry. or Steamer to Montreal **\$2.50**

OTTAWA to MONTREAL and return.

Form 2981. Via O. R. N. Co. Steamer to Lachine, G. T. Ry. or Steamer to Montreal, returning by G. T. Ry. to Lachine, O. R. N. Co. Steamer to Ottawa **\$4.00**

POLAND SPRINGS HOUSE to BOSTON. Form 2141, \$3.00

" " " " " 2142, \$4.25

" " " " " 2143, \$4.25

" " " " " 2313, \$4.25

Y,

S,

\$23.00

\$12.00

\$14.50

\$14.50

\$14.03

\$13.00

\$13.00

\$15.50

\$8.70

\$9.45

\$5.00

\$5.65

Side Issues to River Saguenay, &c.

PORT KENT to AUSABLE CHASM and return. <i>Form X 96. Via Stage.....</i>	\$0.75
PRESCOTT to OTTAWA CITY and return. <i>Form X 97. Via St. Lawrence and Ottawa Railway...</i>	\$3.15
QUEBEC to CACOUNA and return. <i>Form X 65. Via Steamer from Quebec to Rivière du Loup and Intercolonial R.R. or all Rail.....</i>	\$4.50
QUEBEC to HA-HA BAY and return. <i>Form X 67. Via Steamer from Quebec to Rivière du Loup and Steamer....</i>	\$8.00
QUEBEC to TADOUSAC and return. <i>Form X 66. Via Rail or Steamer from Quebec to Rivière du Loup and Steamer.....</i>	\$5.00
RICHMOND to QUEBEC and back. <i>Form X 56. Via Grand Trunk Railway</i>	\$3.00
RIVIERE DU LOUP to HA-HA BAY and return. <i>Form 2761.</i>	\$5.50
TORONTO to COUCHICHING and return. <i>Form 2569. Via Northern Railway, Toronto to Lake Couchiching and return.....</i>	\$3.50
TORONTO to NIAGARA FALLS and return. <i>Form X 87. Steamer to Lewiston, Rail to Falls. Return same way.....</i>	\$3.00
TORONTO to NIAGARA FALLS and return. <i>All Rail. G. W. Railway.....</i>	\$4.20
ST. HILAIRE TO IROQUOIS HOUSE and return (Belœil Mt.) <i>Form 2729. Via Omnibus.....</i>	\$0.50

EXCURSIONS

VIA

Montreal, Quebec and the Lower Provinces



BOSTON to HALIFAX.

Form 2772. Via Portland (B. & M. or E. R.R.), Quebec (G. T.), Pt. Du Chene (Inter. Ry.), Summerside (Steamer), Charlottetown (P. E. I. Ry.), Pictou (Steamer), to Halifax (Inter. Ry.)..... **\$25.00**

HALIFAX to BOSTON.

Form 2773. Reverse of 2772..... **\$25.00**

BOSTON to HALIFAX.

Form 2774. Via Portland (B. & M. or E. R.R.), Quebec (G. T.), to Halifax direct (Inter. Ry.)..... **\$21.00**

HALIFAX to BOSTON.

Form 2775. Reverse of 2774..... **\$21.00**

BOSTON to HALIFAX.

Form 2778. Via Portland (B. & M. or E. R.R.), Montreal (G.T.), Quebec (Rail or Boat), Pt. Du Chene (Inter. Ry.), Summerside (Stmr.), Charlottetown (P. E. I. Ry.), Pictou (Steamer), to Halifax (Inter. Ry.)..... **\$26.50**

HALIFAX to BOSTON.

Form 2779. Reverse of 2778. **\$26.50**

BOSTON to HALIFAX.

Form 2780. Via Portland (B. & M. or E. R.R.), Montreal (G. T.), Quebec (Rail or Boat), to Halifax direct (Inter. Ry.)..... **\$22.00**

HALIFAX to BOSTON.

Form 2781. Reverse of 2780..... **\$22.00**

BOSTON to HALIFAX.

Form 2782. Via Portland (B. & M. or E. R.R.), St. John, N. B. (Steamer), to Halifax (Inter. Ry.)..... **\$10.50**

HALIFAX to BOSTON.

Form 2783. Reverse of 2782..... **\$10.50**

The above to be sold only in connection with other Tickets over the G. T. Ry.

VARIOUS EXCURSION ROUTES at Reduced Rates.

BOSTON TO ANDOVER, ME., and return. Via Bryant's Pond.....	\$9.00
BOSTON TO BETHEL and return. Via Portland.....	\$8.00
BOSTON TO BRYANT'S POND and return. Via Portland.....	\$7.50
BOSTON TO CHICAGO and return. X 203. Via Central Vermont Railway and Montreal to Chicago, return via Buffalo and Albany.....	\$41.00
BOSTON TO CHICAGO and return. Via C. V. R'y to Montreal; G. T. R'y and M. C. R'y. Returning same way.....	\$38.00
BOSTON TO CHICAGO and return. X 204. The reverse of 203.....	\$41.00
BOSTON TO CHICAGO and return. 2828. Via Portland, Montreal and Detroit, all rail. Return same way.....	\$36.00
BOSTON TO CHICAGO or MILWAUKEE and return. 2829. Rail via Portland and Montreal to Sarnia; Steamers via Lakes to Milwaukee or Chicago. Return same way. (Meals and berths included on Sarnia Line Steamers).....	\$36.00
BOSTON TO DETROIT and return. X 207. Via Central Vermont Railway and Montreal to Detroit and return via Buffalo and Albany.....	\$32.00
BOSTON TO DETROIT and return. X 208. The reverse of 207.....	\$32.00
BOSTON TO DETROIT and return. Via C. V. R'y to Montreal and G. T. R'y. Returning same way.....	\$30.00
BOSTON TO DETROIT and return. 2915. All rail via Grand Trunk Railway.....	\$28.00
BOSTON TO DULUTH or FT. WILLIAM and return. Steamer from Sarnia.....	\$57.25
BOSTON TO GRAND VIEW HOUSE, Me. and return. All Rail.....	\$7.00
BOSTON TO GROVETON, N. H. and return. Via Portland, G. T. R. and Gorham. Returning same way ...	\$10.20
BOSTON TO GROVETON, N. H. and return. Via Portland, G. T. R and Gorham. Returning via B.C.&M.Ry.	\$11.20
BOSTON TO GROVETON, N. H. and return. Reverse of the preceding route.....	\$11.20
BOSTON TO LAKE AUBURN, ME. and return. All Rail.....	\$7.00
BOSTON TO MECHANICS FALLS, Me. and return. Steamer between Boston and Portland.....	\$4.50
BOSTON TO MECHANIC FALLS and return. All Rail.....	\$6.50
BOSTON TO MONTREAL and return. X 110. Via Portland, Grand Trunk and Vermont Central Railways.....	\$16.00
BOSTON TO MONTREAL and return. X 111. Via Vermont Central and Grand Trunk Railways.....	\$16.00

Excursion Routes at Reduced Rates.

	BOSTON TO MONTREAL and return. X 112. Via Portland, Grand Trunk Railway, Rutland and Burlington.....	\$16.00
	BOSTON TO MONTREAL and return. X 113. Via Fitchburg, Rutland and Burlington, and Grand Trunk Railway.....	\$16 00
	BOSTON TO MONTREAL and return. 2803. Via Portland and Gorham (White Mountains).....	\$15.00
	BOSTON TO MONTREAL and retur. 2804. Via B. & M. and G. T. Ry's to Pt. Levi, Steamer to Montreal, return via Portland.....	\$19.00
	BOSTON TO MONTREAL and return. 2859. B. & M. or E. and G. T. to Montreal, return via Groveton Jct., Concord & Nashua.....	\$16.00
	BOSTON TO MONTREAL and return. 2860. Reverse of 2859.....	\$16.00
	BOSTON TO NORTH STRATFORD and return. Via B. & M. or E. R. R. to Portland; G. T. Railway to North Stratford. Return same way.....	\$11.00
	BOSTON TO POLAND SPRINGS and return. All Rail.....	\$6.00
	BOSTON TO POLAND SPRINGS and return. Steamer between Boston and Portland.....	\$4.75
	BOSTON TO POINT LEVI and return. 2805. Via Portland and Gorham (White Mountains).....	\$17.00
	BOSTON TO POINT LEVI and return. 2806. Via B. & M. and G. T. Ry's to Montrea., Stmr. to Quebec, return via G. T. and B. & M. Ry's.....	\$19.00
	BOSTON TO POINT LEVI and return. 2853. Via Nashua, Concord, Wells River, Sherbrooke and G. T. R'y, return via G. T. and B. & M. Ry's.....	\$19.00
	BOSTON TO POINT LEVI and return. 2854. Reverse of 2853.....	\$19.00
	BOSTON TO POINT LEVI and return. 2855. B. & M. or E. and G. T. R'y to Point Levi, return via Groveton, Concord & Nashua.....	\$19.00
	BOSTON TO POINT LEVI and return. 2856. Reverse of 2855.....	\$19.00
	BOSTON TO QUEBEC and return. X 130. Via Portland and Grand Trunk Railway to Quebec, Rail or Steamer to Montreal, Vermont Central R.R. to Boston..	\$19.00
	BOSTON TO QUEBEC and return. X 131. Via Vermont Central Railway to Montreal, Rail or Steamer to Quebec, Rail via Portland to Boston.....	\$19.00
	BOSTON TO SOUTH PARIS, Me. and return. Steamer between Boston and Portland.....	\$5.25
	BOSTON TO SOUTH PARIS Me. and return. All Rail.....	\$7.00

EXCURSION ROUTES

TO AND FROM THE

White Mountains.

BOSTON to BOSTON. X 164. Rail or steamer to Portland, rail to Gorham, stage to Glen House and Return to Gorham, rail via Groveton to Littleton, stage to Profile House and Plymouth, rail via Concord to Boston.....	\$21.50
BOSTON to BOSTON. X 165. Rail or steamer to Portland, rail to Gorham, stage to Glen House and return to Gorham, rail via Groveton to Littleton, stage to Profile House and return, rail via Wells River, Concord and Nashua.....	\$21.50
BOSTON to CRAWFORD HOUSE and return. X 73. Rail or steamer to Portland, rail to Gorham, stage via Glen House to Tip Top House, Mt. Washington Railroad summit to base, rail to Crawford House; return same way.....	\$30.00
BOSTON to CRAWFORD HOUSE (via Lake Winnipiseogee) and return X 74. Boston & Maine Railroad to Alton Bay, steamer Mt. Washington to Centre Harbor, stage to North Conway, P. & O. R.R. to Crawford House, rail to base of Mt. Washington, Mt. Washington Railroad base to summit, stage Tip Top House via Glen House to Gorham, rail to Portland, rail or steamer to Boston.....	\$21.75
BOSTON to CRAWFORD HOUSE (via Lake Winnipiseogee) and return. X 75. Rail or steamer to Portland, rail to Gorham, stage via Glen House to Tip Top House, Mt. Washington R.R. summit to base, rail to Crawford House, P. & O. R.R. to No. Conway, stage to Centre Harbor, steamer Mt. Washington, to Alton Bay, Boston & Maine R.R. to Boston....	\$23.75
BOSTON to CRAWFORD HOUSE and return. X 132. Eastern Railroad to North Conway, P. & O. R.R. to Crawford House, rail to base of Mt. Washington, Mt. Washington Railroad base to summit, stage Tip Top House via Glen House to Gorham, rail to Portland, rail or steamer to Boston.....	\$21.50
BOSTON to CRAWFORD HOUSE and return. X 133. Rail or steamer to Portland, rail to Gorham, stage via Glen House to Tip Top House, Mt. Washington Railroad summit to base, rail to Crawford House, P. & O. R.R. to North Conway, Eastern Railroad to Boston.....	\$21.50
BOSTON to GLEN HOUSE and return. X 72. Rail or steamer to Portland, rail to Gorham, stage to Glen House; return same way.....	\$11.00
BOSTON to GLEN HOUSE and return. X 134. Rail or steamer to Portland, rail to Gorham, stage to Glen House and North Conway, Eastern Railroad to Boston.....	\$13.50
BOSTON to GLEN HOUSE and return. X 135. Eastern Railroad to North Conway, stage to Glen House and Gorham, rail to Portland, rail or steamer to Boston.....	\$13.50
BOSTON TO GLEN HOUSE and return. 2919. B. & M. or Eastern R.R. to Portland, G. T. Ry to Gorham, stage to Glen House, Glen Station and No. Conway; Eastern Railroad to Wolfboro', Steamer to Centre Harbor and Alton Bay; B. & M. R.R. to Boston.....	\$16.25
BOSTON TO GLEN HOUSE and return. 2920. Reverse of 2919.....	\$16.25
BOSTON to GORHAM and return. All Rail	\$8.00

EXCURSIONS TO THE RANGELEY LAKES.

	BOSTON TO COLEBROOK and return.	
	<i>Form 3013.</i> Via Portland and North Stratford. Re- turning same way.....	\$13.00
	BOSTON TO DIXVILLE NOTCH and return.	
	<i>Form 3011.</i> Via Portland, Bethel, Upton, Errol Dam, Dixville Notch, Colebrook, North Stratford and Portland.	\$15.25
	BOSTON TO DIXVILLE NOTCH and return.	
	<i>Form 3012.</i> Reverse of 3011.....	\$15.25
	BOSTON TO DIXVILLE NOTCH and return.	
	<i>Form 2967.</i> Via Portland, Bethel, Upton, Errol Dam, to Dixville Notch. Returning same way.....	\$15.50
	BOSTON to INDIAN ROCK and return.	
	<i>Form 2985.</i> Via Portland, Bryant's Pond, Andover, Arm of Lake and Upper Dam.....	\$15.25
	BOSTON TO MAGALLOWAY and return.	
	<i>Form 2966.</i> Via Portland, Bethel and Upton. Re- turning same way.....	\$14.50
	BOSTON to MIDDLE DAM and return.	
	<i>Form 2983.</i> Via Portland, Bryant's Pond, Andover, Arm of Lake.....	\$13.00
	BOSTON TO MAGALLOWAY and return.	
	<i>Form 3009.</i> Via Portland, Bryant's Pond, Andover, So. Arm, Middle Dam and Sunday Cove. Returning same way.	\$17.00
	BOSTON to RANGELEY OUTLET and return.	
	<i>Form 2986.</i> Via Portland, Bryant's Pond, Andover, Arm of Lake, Upper Dam, Indian Rock, Rangeley Outlet or Mountain View House. Returning via Greenvale, or Rangeley, Phillips, Farmington and Portland.....	\$15.25
	BOSTON to RANGELEY OUTLET and return.	
	<i>Form 2987.</i> Via Portland, Farmington and Phillips. Returning via Andover, Bryant's Pond and G.T. Ry....	\$15.25
	BOSTON TO SOUTH ARM and return.	
	<i>Form 3010.</i> Via Portland, Bryant's Pond and Andover Return same way.....	\$12.00
	BOSTON TO UPPER DAM and return, via Dixville Notch. Form 2800. Via Portland, Bryant's Pond, An- dover, So. Arm, Upper Dam, Middle Dam, Sunday Cove, Errol Dam, Colebrook, N. Stratford and Portland.....	\$18.00

Excursions to the Rangeley Lakes.

BOSTON TO UPPER DAM via Dixville Notch and return. Form 2801. Reverse of Form 2800.....	\$18.00
BOSTON TO UPPER DAM via Dixville Notch and return. Form 2802. Via Portland, Bryant's Pond, Andover, South Arm, Upper Dam, Middle Dam, Sunday Cove, Errol Dam to Dixville Notch. Returning same way.	\$21.00
BOSTON TO UPPER DAM and return. Form 2962. Via Portland, No. Stratford, Colebrook, Dixville Notch, Errol Dam, Sunday Cove, Middle Dam to Upper Dam, returning same way.....	\$22.00
BOSTON TO UPPER DAM and return. Form 2965. Via Portland, Bethel, Upton, Sunday Cove, Middle Dam to Upper Dam. Returning same way.....	\$16.50
BOSTON TO UPPER DAM and return. Form 2968. Via Portland, Bryant's Pond, Andover, South Arm, Upper Dam, Middle Dam, Sunday Cove, Upton, Bethel and Portland.....	\$15.25
BOSTON TO UPPER DAM and return. Form 2969. Reverse of 2968.....	\$15.25
BOSTON to UMBAGOG LAKES and return (Upton). Via Portland and Bethel.....	\$11.00
BOSTON to UPPER DAM and return. Form 2984 Via Portland, Bryant's Pond, Andover, Arm of Lake.....	\$14.00

NOTE.—The fares as shown in the foregoing Routes are by Rail between Boston and Portland, unless the route is specially given. If passengers desire to go by Steamer, the fares will be **\$1.00** less.

The Portland Steam Packet Company's favorite Side-wheel Steamers, "**John Brooks**," and "**Forest City**," form a daily line, — leaving India Wharf, Boston, every evening at **7.00 P.M.**, and Franklin Wharf, Portland, every evening at **7.00 P.M.**, Sundays excepted.

Passengers to or from Lewiston, Poland Springs, the White Mountains, Montreal, Quebec, &c., via the Grand Trunk Railway, will find this a pleasant as well as a favorite route, whereby they can enjoy a comfortable night's rest, beside the additional enjoyment of one of the finest ocean trips on the Eastern coast, and arrive at both Portland and Boston in season to connect with the early trains.

Baggage is transferred at Portland from the Steamboat Wharf to the Grand Trunk Railway Depot "free," and without any trouble to passengers.

EXCURSION RATES

—FROM—

PORTLAND.

PORTLAND to BETHEL, ME., and return	\$ 4.50
PORTLAND to BRYANT'S POND, ME., and return	4.00
PORTLAND to BUCKFIELD, ME., and return	3.30
PORTLAND to CANTON, ME., and return	3.50
PORTLAND to CHICAGO and return	36.00
PORTLAND to DETROIT and return	28.00
PORTLAND to GORHAM, ME., and return	5.00
PORTLAND to HARTFORD, ME., and return	3.40
PORTLAND to HEBRON, ME., and return	3.15
PORTLAND to LEWISTON, ME., and return	1.60
PORTLAND to LONDON and return	25.00
PORTLAND to MINOT, ME., and return	2.90
PORTLAND to MONTREAL and return	12.50
PORTLAND to NEW GLOSTER, ME., and return	1.25
PORTLAND to NO. STRATFORD and return	8.00
PORTLAND to SO. PARIS, ME., and return	3.15
PORTLAND to POINT LEVI and return	14.15
PORTLAND to SARNIA and return	28.00
PORTLAND to SUMNER, ME., and return	3.35
PORTLAND to YARMOUTH, ME., and return50

Excursion Rates, Portland to the Rangeley Lakes, are \$3.00 less than those shown from Boston.

ATCHISON, TOPEKA AND SANTA FE RAILROAD.

THE BEST LINE TO COLORADO.

THE ONLY LINE

TO

SOUTH-WESTERN KANSAS AND NEW MEXICO.

TOURISTS

Will find capital HUNTING and FISHING in abundance in Colorado and New Mexico; and by this Route ONLY can they reach the Historic City of Santa Fe and the Relics of the Montezumas, and the beautiful Valley of the Pecos.

HEALTH SEEKERS

Can ONLY reach the famous Hot Springs of Las Vegas by this Line.

MINERS

Going to Leadville or wishing to prospect the undeveloped Mines of New Mexico and Arizona, the great future Mining Camps of the Continent, should TAKE THIS LINE.

HOME SEEKERS

Will find the Lands of this Company the BEST IN SOIL, CLIMATE, AND MARKETS.

Finest Pullman Sleeping Cars on the Continent, elegantly furnished Coaches, and all trains perfectly equipped for SAFETY with the latest improvements in Air Brakes and Platform Couplings.

H. L. CARGILL, New England Agent,
197 WASHINGTON STREET, BOSTON.

W. F. WHITE, General Passenger and Ticket Agent,
TOPEKA, KANSAS.

TAKE THE

Pullman 16-Wheel Palace Sleeping Cars,
C. B. & Q. Palace Drawing-Room Cars,
With Porton's Reclining Chairs. No Extra
Charge for Seats in Reclining Chairs.
The Famous C. B. & Q. Palace Dining Cars.



3 RUNNING
THROUGH PASSENGER TRAINS
DAILY.
3

THE OLD, RELIABLE AND FAVORITE ROUTE
BETWEEN

CHICAGO

COUNCIL BLUFFS, OMAHA, LINCOLN, ST. JOSEPH,
ATCHISON, TOPEKA, KANSAS CITY,
AND ALL POINTS IN

KANSAS, NEBRASKA,
Colorado, Wyoming, Montana, Nevada,
Arizona, Idaho, and

CALIFORNIA.

THE SHORTEST, SPEEDIEST AND MOST COMFORTABLE ROUTE

Via **HANNIBAL** to

Fort Scott, Denison, Dallas, Houston, Austin, San Antonio, and
GALVESTON.

Steel Rails and Superior Equipment, combined with their Great Through
Car Arrangement, makes this, above all others,
the favorite Route to the

SOUTH, SOUTH-WEST, AND THE FAR WEST.

TRY IT, and you will find Travelling a LUXURY
INSTEAD OF A DISCOMFORT.

All information about Rates of Fare, Sleeping Car Accommodations, and
Time Tables, will be cheerfully given by applying to

J. T. A. BEAN, Gen'l Eastern Agt., 306 Washington Street, Boston.
JAMES R. WOOD, Gen'l Pass. Agt., CHICAGO.

Chicago, Milwaukee & St. Paul Railway.

THE GREAT THROUGH LINE.

CHICAGO, NORTHWEST WISCONSIN,

NORTHERN IOWA, MINNESOTA,

Dakota, Manitoba and the Black Hills.

Passing through a finer country, with grander scenery, and connecting more business centres and pleasure resorts than any other Northwestern Line. Connecting in Chicago with all Eastern and Southern Lines.

THE ONLY THROUGH LINE

BETWEEN

Chicago, Milwaukee, Sparta, La Crosse, Winona, Madison, McGregor, Owatonna, St. Paul and Minneapolis.

THE ONLY THROUGH RAIL LINE via Milwaukee, the Commercial Metropolis of Wisconsin.

THROUGH TICKETS BETWEEN

CHICAGO, ST. PAUL or MINNEAPOLIS,

ARE GOOD EITHER VIA

Oconomowoc, Watertown, Portage, Kilbourn City, Tomah, Sparta, La Crosse, Winona, Wabasha, Reed's Landing, Lake City, Red Wing, Hastings, &c. or via Waukesha, Whitewater, Madison, Prairie du Chien, McGregor, Austin, Owatonna, Faribault, &c.

The first route traverses the valley of the Upper Mississippi from La Crosse to Minneapolis, along the shore of Lake Pepin, and all the *Grand Scenery of that region.*

The other route passes through the Garden of Minnesota and Iowa.

Palace Sleeping Cars and Coaches.

UPHOLSTERED SECOND-CLASS CARS.

Westinghouse latest improved Automatic Air-Brake, with Miller Safety Platforms and Couplings, on all Cars.

THOROUGHLY BALLASTED STEEL-RAIL TRACK.

THIS COMPANY issue annually a book called the "Tourist's Manual to the Health and Pleasure Resorts of the Golden Northwest," which can be had FREE on application to

JOS. R. HIXSON.

Gen. New Eng. Agt.

CHAS. A. BROWN,

Pass. Agt., 306 Washington St., Boston.

A. V. H. CARPENTER. G. P. & T. Agt., Milwaukee, Wis.

