

**CIHM
Microfiche
Series
(Monographs)**

**ICMH
Collection de
microfiches
(monographies)**



Canadian Institute for Historical Microreproductions / Institut canadien de microreproductions historiques

© 1996

Technical and Bibliographic Notes / Notes technique et bibliographiques

The Institute has attempted to obtain the best original copy available for filming. Features of this copy which may be bibliographically unique, which may alter any of the images in the reproduction, or which may significantly change the usual method of filming are checked below.

- ☒ Coloured covers / Couverture de couleur
- ☐ Covers damaged / Couverture endommagée
- ☐ Covers restored and/or laminated / Couverture restaurée et/ou pelliculée
- ☐ Cover title missing / Le titre de couverture manque
- ☐ Coloured maps / Cartes géographiques en couleur
- ☐ Coloured ink (i.e. other than blue or black) / Encre de couleur (i.e. autre que bleue ou noire)
- ☐ Coloured plates and/or illustrations / Planches et/ou illustrations en couleur
- ☐ Bound with other material / Relié avec d'autres documents
- ☐ Only edition available / Seule édition disponible
- ☐ Tight binding may cause shadows or distortion along interior margin / La reliure serrée peut causer de l'ombre ou de la distorsion le long de la marge intérieure.
- ☐ Blank leaves added during restorations may appear within the text. Whenever possible, these have been omitted from filming / Il se peut que certaines pages blanches ajoutées lors d'une restauration apparaissent dans le texte, mais, lorsque cela était possible, ces pages n'ont pas été filmées.
- ☐ Additional comments / Commentaires supplémentaires:

L'Institut a microfilmé le meilleur exemplaire qu'il lui a été possible de se procurer. Les détails de cet exemplaire qui sont peut-être uniques du point de vue bibliographique, qui peuvent modifier une image reproduite, ou qui peuvent exiger une modifications dans la méthode normale de filmage sont indiqués ci-dessous.

- ☐ Coloured pages / Pages de couleur
- ☐ Pages damaged / Pages endommagées
- ☐ Pages restored and/or laminated / Pages restaurées et/ou pelliculées
- ☒ Pages discoloured, stained or foxed / Pages décolorées, tachetées ou piquées
- ☒ Pages detached / Pages détachées
- ☒ Showthrough / Transparence
- ☐ Quality of print varies / Qualité inégale de l'impression
- ☐ Includes supplementary material / Comprend du matériel supplémentaire
- ☐ Pages wholly or partially obscured by errata slips, tissues, etc., have been refilmed to ensure the best possible image / Les pages totalement ou partiellement obscurcies par un feuillet d'errata, une pelure, etc., ont été filmées à nouveau de façon à obtenir la meilleure image possible.
- ☐ Opposing pages with varying colouration or discolourations are filmed twice to ensure the best possible image / Les pages s'opposant ayant des colorations variables ou des décolorations sont filmées deux fois afin d'obtenir la meilleure image possible.

This item is filmed at the reduction ratio checked below/

Ce document est filmé au taux de réduction indiqué ci-dessous.

10x	14x	18x	22x	26x	30x
<input type="checkbox"/>	<input type="checkbox"/>	<input type="checkbox"/>	<input checked="" type="checkbox"/>	<input type="checkbox"/>	<input type="checkbox"/>
12x	16x	20x	24x	28x	32x

The copy filmed here has been reproduced thanks to the generosity of:

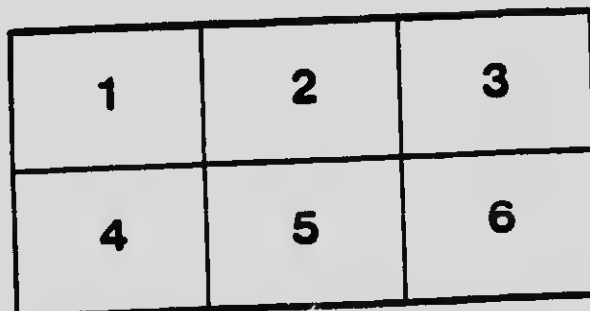
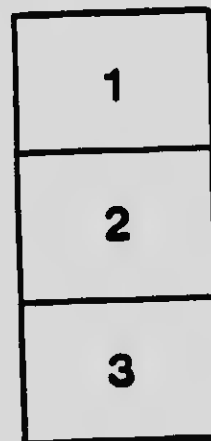
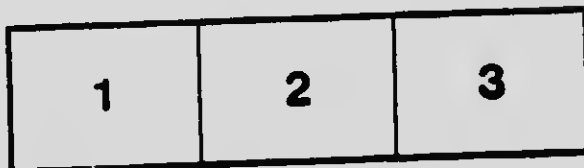
National Library of Canada

The images appearing here are the best quality possible considering the condition and legibility of the original copy and in keeping with the filming contract specifications.

Original copies in printed paper covers are filmed beginning with the front cover and ending on the last page with a printed or illustrated impression, or the back cover when appropriate. All other original copies are filmed beginning on the first page with a printed or illustrated impression, and ending on the last page with a printed or illustrated impression.

The last recorded frame on each microfiche shall contain the symbol \longrightarrow (meaning "CONTINUED"), or the symbol ∇ (meaning "END"), whichever applies.

Maps, plates, charts, etc., may be filmed at different reduction ratios. Those too large to be entirely included in one exposure are filmed beginning in the upper left hand corner, left to right and top to bottom, as many frames as required. The following diagrams illustrate the method:



L'exemplaire filmé fut reproduit grâce à la générosité de:

Bibliothèque nationale du Canada

Les images suivantes ont été reproduites avec le plus grand soin, compte tenu de la condition et de la netteté de l'exemplaire filmé, et en conformité avec les conditions du contrat de filmage.

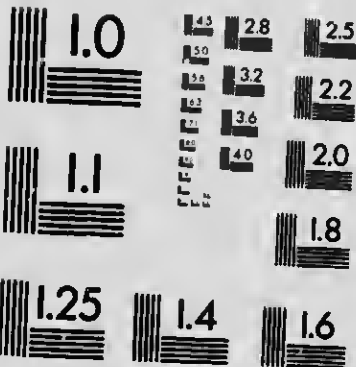
Les exemplaires originaux dont la couverture en papier est imprimée sont filmés en commençant par le premier plat et en terminant soit par la dernière page qui comporte une empreinte d'impression ou d'illustration, soit par le second plat, selon le cas. Tous les autres exemplaires originaux sont filmés en commençant par la première page qui comporte une empreinte d'impression ou d'illustration et en terminant par la dernière page qui comporte une telle empreinte.

Un des symboles suivants apparaîtra sur la dernière image de chaque microfiche, selon le cas: le symbole \longrightarrow signifie "A SUIVRE", le symbole ∇ signifie "FIN".

Les cartes, planches, tableaux, etc., peuvent être filmés à des taux de réduction différents. Lorsque le document est trop grand pour être reproduit en un seul cliché, il est filmé à partir de l'angle supérieur gauche, de gauche à droite, et de haut en bas, en prenant le nombre d'images nécessaire. Les diagrammes suivants illustrent la méthode.

MICROCOPY RESOLUTION TEST CHART

(ANSI and ISO TEST CHART No. 2)



APPLIED IMAGE Inc

1653 East Main Street
Rochester, New York 14609 USA
(716) 482-0300 - Phone
(716) 288-5989 - Fax

McGill University

Reunion of
Graduates in Medicine
and formal opening of new
Medical Building





NEW MEDICAL BUILDING

McGILL UNIVERSITY
MONTREAL, CANADA

Reunion
of
Graduates in Medicine
and
Formal Opening
of the
New Medical Building

❧ ❧ JUNE 5th and 6th, 1911 ❧ ❧

870225

PROGRAMME



Monday, June 5th, 1911

- 9.00 a.m. **Registration of Graduates** in the McGill Union.
- 1.00 p.m. **Photograph of Graduates** on the Campus. All graduates are requested to meet promptly for this photograph.
- 1.30 p.m. **Informal Luncheon** in the McGill Union given by the Members of the Teaching Staff to visiting graduates.
- 3.00 p.m. **Convocation** for conferring degrees in Medicine, in the Royal Victoria College. Seats will be reserved for ticket holders until 2.45 p.m.
- 5.00 p.m. **Reception and Tea** at the McGill Union by the Dean and Miss Shepherd in honour of the visiting ladies.
- 8.30 p.m. **Conversazione** given by the Governors of the University in the New Medical Building, and formal opening by His Excellency, Earl Grey, G.C.M.G., Governor-General of Canada.

Tuesday, June 6th.

- 11.00 a.m. **Laying of Corner Stone of the new Montreal General Hospital** by His Excellency, Earl Grey, G.C.M.G., Governor-General of Canada.
- 4.00 p.m. **Garden Party** by the Ladies' Committee in the grounds of the Royal Victoria Hospital to the ladies and visiting graduates.
- 7.30 p.m. **Dinner** at the Windsor Hotel, given to the graduates by the Dean, Professors, and members of the Teaching Staff. The graduates will be seated in classes.
- Golf**--By the kind permission of the Presidents and Officers of the Outremont, Royal Montreal (Dixie), and Beaconsfield Golf Clubs and Victoria Country Club, the courtesy of these clubs is extended to all visiting graduates.

PROGRAMME OF CONVERSAZIONE



Directions to Guests.

Guests will enter the Building by the University Street Entrance.

Gentlemen's cloak room to the right on entering ground floor.

Ladies Dressing Rooms on first floor, to the left, in Executive and Dental Wing.

Ladies will meet their escorts in the main entrance hall, first floor.

Guests are requested to proceed at once to the reception in the first floor of the Museum, and thence, by way of the western staircase, to the Concert Hall, the various Laboratories, Museums, Lecture Rooms, etc.

Guests will leave by the main entrance east wing.

Carriages ordered for 12.00.



SYNOPSIS OF TIME-TABLE AND PROGRAMME



- 8.30-9.15 **Reception of Guests**—Museum of Pathology, First Floor.
- 8.30-12.00 **Orchestra**—Hall of East Wing.
- 9.15- **Formal Opening**—Anatomical Laboratory, Third Floor.
- 9.30-10.00 **Concert**—Anatomical Laboratory, Third Floor, East Wing.
- 9.00-11.30 **Microscopical and Bacteriological Exhibits**—Pathological Laboratories, Second Floor, East Wing.
- 9.00-11.30 **Roentgen-Ray Exhibit, etc.**—Third Floor, Room 87, adjoining Museum.
- 10.00-10.30 **Liquid Air**—Lecture Room A., First Floor.
- 10.00-10.30 **Exhibition of Living Eggs, etc.**—Lecture Room B., Second Floor.
- 9.30-12.00 **Library Exhibits.**
- 10.00-10.30 **Lantern and Exhibits**—Hygiene Laboratories, Third Floor, West Wing.
- 10.30-11.30 **Ultra Microscope and Dark Field Illumination**—Pathological Laboratory, Second Floor.
- 10.45-11.30 **Concert**—Anatomical Laboratory, Third Floor, East Wing.
- 9.15-12.00 **Informal Dance**—Room 74, Second Floor.
- 10.00-12.00 **Refreshments**—Main Hall, West Wing.
- 10.00-10.30 **Microprojection of Biological Specimens**—Second Floor, West Wing.
- 9.00-11.30 **Models and Experiments** illustrating the physiology of the Special Senses—First Floor, West Wing.
- 10.45-11.15 **Lantern Demonstration**—Eastern Anthropology, Hygiene Laboratory, Third Floor, West Wing.



THE history of the Medical Faculty of McGill University is closely linked with that of the General Hospital and the beginnings of Medical Education in Canada. The five founders of the Montreal General Hospital — Robertson, Caldwell, Stevenson, Holmes and Loedel — established at the same time the "Montreal Medical Institution" in a small, wooden house on the site of the Bank of Montreal, Place d'Armes Square. Twenty-five students assembled in 1824 to receive the first systematic course of medical education given in Canada.

After continuing as an independent enterprise for four years, owing largely to the exertions of Dr. Stevenson, the Montreal Medical Institution became the Faculty of Medicine of McGill University and thus prevented the lapse of the McGill bequest to the residuary legatees, the Des Rivieres family.

Thus, in the beginning of things at McGill, the Medical Faculty was probably the means of keeping the University in existence and, for many decades to follow, maintained its reputation as a seat of learning through the sound training received by its graduates in medicine. For some years the teaching in the Medical Faculty was carried on in the top floor of the central Arts Building. This was found too far from the centre of the city and Drs. Campbell, Wright and others of the Faculty built a new Medical School in Cote Street, next door to the Theatre Royal. The Faculty occupied this from 1853 to 1872, when a substantial cut stone building was erected in the University grounds by the Governors of the University. This building formed the front of the buildings almost completely destroyed by fire in 1907.

From 1872 until 1885 this building sufficed for the highest requirements of the medical education of that period. The necessity of further extension of laboratory teaching required in 1885 an addition to this building. This was cheaply constructed of brick and contained two lecture rooms, laboratories for chemistry and physiology and a small private working laboratory on the top floor for practical pathology and bacteriology. In 1893 J. H. R. Molson gave \$60,000 for the further development of the laboratory teaching and the increased room required by the larger classes of students. Two years later a substantial stone building was erected, connected with the old building and with the residence of Dr. Harrington. The Harrington House and an adjoining room or two formed the original J. H. R. Molson Laboratories for Pathology. The new stone wing still existing as part of the Laboratory wing gave a large assembly hall, extensive laboratories for physiology, well-equipped preparation rooms for chemistry, histological laboratories, students' rooms, etc. The gift of \$100,000 from the family of Lord Strathcona in 1898 enabled the Faculty to remove the unsightly and irregular brick additions erected in 1885, as well as the Harrington House, and replace them by stone buildings more in harmony with the other university structures. These additions and the alterations of the older parts cost the faculty about \$140,000, but they more than doubled the capacity of the former building.

Ample room and the most modern equipment were here provided for the conduct of laboratory and didactic teaching of classes of 200 students, as well as extensive museum and library space. This extensive and complete building

was only used for four or five years when the disastrous fire of April 1907 entirely destroyed the central building, a large portion of the front wing (the original medical building), and greatly damaged by fire and water the laboratory wing. This fire destroyed completely the departments of pathology and anatomy with the libraries, specimens and anatomical collections connected with them, as well as the museum of obstetrics and gynaecology and the valuable osteological collections of the pathological museum. Nearly half the museum, however, was saved and the fire-proof stack room prevented the spread of the fire in the library which was damaged only by water.

The laboratory wing was restored and modified to contain the necessary laboratory equipment for all departments in time for the opening of the session, 1907-08. Lectures were given at various University buildings and in the Hospitals. Competitive designs were invited that summer for a building to occupy the northern end of the University grounds, opposite the Royal Victoria Hospital. This property was presented to the University by Lord Strathcona as a site for the new medical building after the fire. The firm of Brown and Valance were the successful architects in the competition and the handsome building we are opening is erected from their designs. The amount received from the fire insurance on the medical building was inadequate to completely build this edifice. The Governors agreed, however, from their scanty funds to add sufficient to build the east wing and the central block without the museum. Work was well advanced on this portion of the building when the Principal cabled from England in June, 1909, that Lord Strathcona had again come forward in our hour of need and given the University \$450,000 to enable it to complete and equip the whole building according to the original designs.

A brief statement of dimensions and structure of this new home of the Medical Faculty may prove interesting to our Alumni. It is the largest building of the University group, its frontage on Pine Avenue and the University Campus is 268 feet, its frontage on University Street is 171 feet and 114 feet on Carlton Road. The Museum wing is in the form of a cross, 74 feet square. The exterior of the building is of finely cut Montreal limestone, and the whole edifice is of the highest type of modern steel construction and thoroughly fireproof. The roof is covered with green slate and copper flashings. All the windows are fitted with steel frames and sashes. The corridors and halls have mosaic floors with marble borders. The walls are lined with low glazed terra cotta from Doulton's Works in England to a height of eight feet. The finish throughout is in quartered oak. Two wide marble staircases with wrought iron balustrades lead to the upper floors.

The Students' Entrance is on University Street and there are two major entrances by broad granite steps from the Campus.

The electric current for lighting, ventilation and power is generated at the University plant. An electric passenger elevator is provided in the East Wing, as well as a special lift from the preparation room to the dissecting room. Electric lifts are also installed for bringing books and material from the unpacking rooms in the basement to the reading rooms and to the museum.

The cost of the building and its equipment is between \$700,000 and \$800,000.

Lord Strathcona by this his latest and most munificent gift to the University has, in buildings and equipment, placed the McGill Medical Faculty in the foremost position among the medical schools on this Continent.

PROGRAMME



RECEPTION OF GUESTS: in the lower floor of the Pathological Museum by the Governors, the Principal and the Dean of the Medical Faculty, from 8.30-9.15.

ORCHESTRA in Entrance Hall, East Wing, 9.00-12.00.

Musical Director, - A. R. BROWN.

PROGRAMME

- | | | |
|--------------------------------|-------------------------------------|---------------------|
| 1. March | "Rakoczy" | <i>Liszt.</i> |
| 2. Overture | "Bohemian Girl" | <i>Baife.</i> |
| 3. Waltz | "Dreams of Childhood" | <i>Waldleufel.</i> |
| 4. Selection | "Carmen" | <i>Bizet.</i> |
| 5. Intermezzo | "Barcarolle" | <i>Offenbach.</i> |
| 6. Overture | "Raymond" | <i>Thomas.</i> |
| 7. Fantasia | "La Bohème" | <i>Puccini.</i> |
| 8. Selection | "Faust" | <i>Gounod.</i> |
| 9. Waltz | "Ange d'Amour" | <i>Waldleufel.</i> |
| 10. Selection | "Pagliacci" | <i>Leoncavallo.</i> |
| 11. Serenade | "Les Millions d'Arlequin" | <i>Drigo.</i> |
| 12. March | "La Reine de Saba" | <i>Gounod.</i> |

FORMAL OPENING OF THE NEW BUILDING in the Anatomical Laboratory, East Wing, Third Floor, by His Excellency, Earl Grey, Governor-General of Canada and Visitor of the University, 9.15.

This ceremony will be followed by a **CONCERT.**

PROGRAMME

- | | | |
|----------------------------|------------------------------|-------------------|
| 1. Aria | From "Mignon" | <i>Thomas</i> |
| | Miss ANTOINETTE PANNETON. | |
| 2. Violin Solo | (a) "Minuet" | <i>Beethoven</i> |
| | (b) "Mazurka" | <i>Wienawski</i> |
| | Miss AUGUSTA SCHMIDT | |
| 3. Songs | (a) "Lullaby" | <i>Welsh</i> |
| | (b) "Ah Moon, My delight" | |
| | (from "The Persian Garden") | <i>L. Lehmann</i> |
| | Mr. MERLIN DAVIES | |
| 4. Violoncello Solo | (a) "Prelude" | <i>Corelli</i> |
| | (b) "Herbstblümen" | <i>Popper</i> |
| | Miss EVELYN SCHMIDT | |

Accompanist . Miss CLARA LICHTENSTEIN

INTERMISSION of 45 minutes to enable the audience to visit the Laboratories, Exhibits, etc.

INFORMAL DANCE in Room No. 74 Central Building, Second Floor.

PROGRAMME

9.15	Waltz	" Blue Danube "
9.30	Two-Step	" Down the Field "
9.45	Waltz	" Chocolate Soldier "
10.00	Waltz	" Les Patineurs "
10.15	Two-Step	" Folies Bergeres "
10.30	Waltz	" Contes d'Hoffmann "
10.45	Two-Step	" The Red Mill "
11.00	Waltz	" Dollar Princess "
11.15	Two-Step	" Diabolo "
11.30	Waltz	" Jolly Fellows "
11.45	Two-Step	" Extra "
12.00	Waltz	" Extra "

Dancers will kindly leave the room by the Museum Door and enter from the Main Hall.



EXHIBITS AND LABORATORY DEMONSTRATIONS:

1. **The Library Exhibits** (in charge of Miss Charlton.) In the Reading and Journal rooms will be displayed (1) The Osler Collection of votive offerings from the Temple of Æsculapius at Rome ; (2) Original illuminated diplomas from the Universities of Northern Italy, 16th and 17th Centuries (from the Osler Collection) ; (3) Early illuminated manuscripts and books on Ophthalmology (from the Casey Wood Collection) ; (4) Works on Tuberculosis from Hippocrates and Galen to Robert Koch ; (5) Medical Canadiana, including the first diploma from McGill University and many historical letters, etc., connected with the early history of McGill University.

The Stack Room, Second Floor, will be open for inspection throughout the evening.

2. **The Roentgen Ray Exhibits** (in charge of Mr. Day) in room No. 87, adjoining the Museum, on the third floor; entrance from the Hall, exit to the Museum. (1) A series of skiagraphs illustrating

the use of X-Rays in Surgery showing bullets and other foreign bodies *in situ*, from the Montreal General and Royal Victoria Hospitals. (2) During the evening two fluoroscopes will be in continuous operation to enable guests to see the penetrating effect of X-Rays. (3) Radium emanations will be made visible by a Crooks Spintheriscope near the entrance to the room. (4) High frequency currents and their effects. (5) An exhibition of Geissler's vacuum tubes.

3. Pathological Laboratories : Second floor, East wing; Microscopical and Bacteriological Exhibits. The main laboratory will contain (1) Microscopes showing the well known disease-producing bacteria as well as culture tubes containing these organisms in a living form, under charge of Dr. Adami and Dr. McCrac. (2) Special exhibits from the General Hospital under charge of Dr. Rhea. (3) The following from the Royal Victoria Hospital under charge of Dr. Grüner. Series of microscopes showing blood cells taking up bacteria (phagocytosis), a second series showing action of blood cells on bacteria in health and disease (opsonic action) a third series showing the engulfing of waste products by cells of the body. Also other microscopes showing the so-called cancer parasite and the effect of polarized light upon crystals in the tissues. (4) In the private laboratories adjoining will be seen the ultra-microscopic effects and the dark field illumination ; colloidal gold and silver and some living cells will be shown.

4. Museums: The Pathological Museum will be of special interest only to physicians and surgeons. The Anatomical Museum on the third floor contains many rare and interesting skeletons of the lower animals.

A valuable and interesting collection of Central African curios donated to the University by Dr. J. L. Todd will be exhibited for the first time in the Pathological Museum, Second Floor.

5. Physiology of Special Senses : (In charge of Dr. Robertson) in the private laboratory for Pharmacology, West Wing. First Floor; entrance from staircase. The exhibit will include models of the eye, ear, larynx and slides illustrating color and form, etc.



SECOND CONCERT

Anatomical Laboratory, Third Floor, East Wing. 10.45-11.30.

PROGRAMME

1. **Duet** "Les Hirondelles" (from Mignon) *Thomas*
Miss PANNETON and Mr. BENOIT
 2. **Baritone Solo** "Pogner's Address" (from the Meistersinger)
Mr. E. BENOIT *Wagner*
 3. **Violin Solo** "Adagio" *Rode*
Miss JEANNE ROSS
 4. **Aria** Valse from "Romeo and Juliette" *Gunod*
Miss ANTOINETTE PANNETON
 5. **Violin Solo** "Danse Czigany" *Naches*
Miss JEANNE ROSS
 6. **Songs**
 - a. "Oh bear my heart to my mistress" *Old Irish Air*
 - b. "Mai" *Reynaldo Halm*Mr. E. BENOIT
- Accompanist . Miss CLARA LICHTENSTEIN



SPECIAL DEMONSTRATIONS

1. **Physics** (Radium and Electric Effects), in charge of Mr. Day, private laboratories, Hygiene Department, Third Floor, West Wing, 11.00-11.30. Electricity, Radium Wireless Telegraphy, etc.
2. **Liquid Air.** Lecture Room A., first floor, 10.30-11.00. Experiments, in charge of Professor Ruttan, showing some of the effects of a temperature of 356° below zero.
3. **Embryology.** Lecture Room B., Second Floor, 10.30-11.00. Demonstration, by Professor Simpson, of the process of development of the hen's egg. The living chick, in different stages of growth, will be projected upon the screen.

Experiments illustrating growth by osmotic pressure, movement by force of surface tension, etc.

4. Microprojection of Biological subjects, in charge of Dr. Grüner. Laboratory for Pharmacology, Second Floor, West Wing, 10.30-11.00.

5. Eastern Anthropology (in charge of Professor Willey), Hygiene Laboratory, Third Floor, West Wing. A series of lantern slides illustrating quaint customs, etc., in Ceylon and New Guinea.



Refreshments will be served in the Main Hall, First Floor, West Wing. 10.00-12.00.





