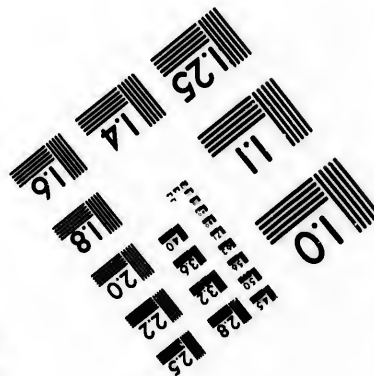
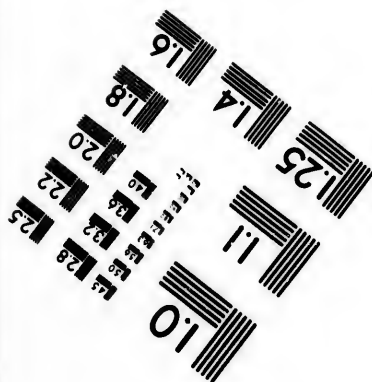
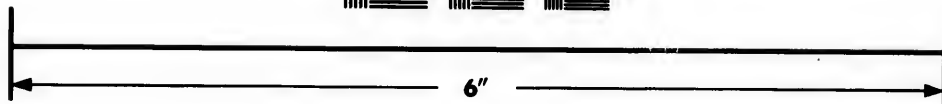
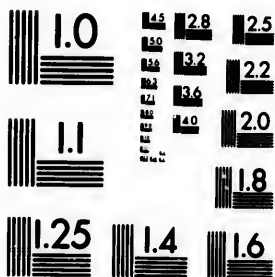


**IMAGE EVALUATION  
TEST TARGET (MT-3)**



**Photographic  
Sciences  
Corporation**

23 WEST MAIN STREET  
WEBSTER, N.Y. 14580  
(716) 872-4503

Canada

**CIHM/ICMH  
Microfiche  
Series.**

**CIHM/ICMH  
Collection de  
microfiches.**



**Canadian Institute for Historical Microreproductions / Institut canadien de microreproductions historiques**

**© 1982**

Technical and Bibliographic Notes/Notes techniques et bibliographiques

The Institute has attempted to obtain the best original copy available for filming. Features of this copy which may be bibliographically unique, which may alter any of the images in the reproduction, or which may significantly change the usual method of filming, are checked below.

L'Institut a microfilmé le meilleur exemplaire qu'il lui a été possible de se procurer. Les détails de cet exemplaire qui sont peut-être uniques du point de vue bibliographique, qui peuvent modifier une image reproduite, ou qui peuvent exiger une modification dans la méthode normale de filmage sont indiqués ci-dessous.

- Coloured covers/  
Couverture de couleur
- Covers damaged/  
Couverture endommagée
- Covers restored and/or laminated/  
Couverture restaurée et/ou pelliculée
- Cover title missing/  
Le titre de couverture manque
- Coloured maps/  
Cartes géographiques en couleur
- Coloured ink (i.e. other than blue or black)/  
Encre de couleur (i.e. autre que bleue ou noire)
- Coloured plates and/or illustrations/  
Planches et/ou illustrations en couleur
- Bound with other material/  
Relié avec d'autres documents
- Tight binding may cause shadows or distortion  
along interior margin/  
La reliure serrée peut causer de l'ombre ou de la  
distortion le long de la marge intérieure
- Blank leaves added during restoration may  
appear within the text. Whenever possible, these  
have been omitted from filming/  
Il se peut que certaines pages blanches ajoutées  
lors d'une restauration apparaissent dans le texte,  
mais, lorsque cela était possible, ces pages n'ont  
pas été filmées.
- Additional comments:/  
Commentaires supplémentaires:

- Coloured pages/  
Pages de couleur
- Pages damaged/  
Pages endommagées
- Pages restored and/or laminated/  
Pages restaurées et/ou pelliculées
- Pages discoloured, stained or foxed/  
Pages décolorées, tachetées ou piquées
- Pages detached/  
Pages détachées
- Showthrough/  
Transparence
- Quality of print varies/  
Qualité inégale de l'impression
- Includes supplementary material/  
Comprend du matériel supplémentaire
- Only edition available/  
Seule édition disponible
- Pages wholly or partially obscured by errata  
slips, tissues, etc., have been refilmed to  
ensure the best possible image/  
Les pages totalement ou partiellement  
obscurcies par un feuillet d'errata, une pelure,  
etc., ont été filmées à nouveau de façon à  
obtenir la meilleure image possible.

This item is filmed at the reduction ratio checked below/  
Ce document est filmé au taux de réduction indiqué ci-dessous.

10X	14X	18X	22X	26X	30X
<input type="checkbox"/>	<input type="checkbox"/>	<input type="checkbox"/>	<input checked="" type="checkbox"/>	<input type="checkbox"/>	<input type="checkbox"/>
12X	16X	20X	24X	28X	32X

The co  
to the

The im  
possibl  
of the  
filming

Origina  
beginn  
the las  
sion, o  
other o  
first pa  
sion, a  
or illus

The las  
shall co  
TINUED  
whiche

Maps, p  
differen  
entirely  
beginni  
right an  
require  
method

The copy filmed here has been reproduced thanks to the generosity of:

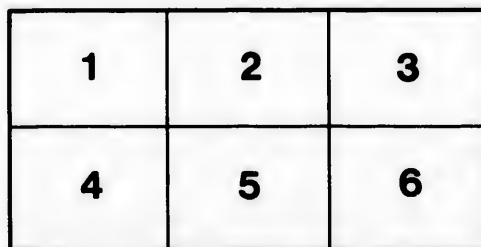
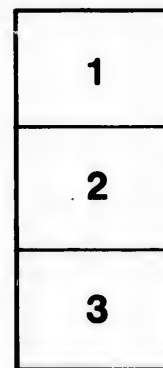
Library of the Public  
Archives of Canada

The images appearing here are the best quality possible considering the condition and legibility of the original copy and in keeping with the filming contract specifications.

Original copies in printed paper covers are filmed beginning with the front cover and ending on the last page with a printed or illustrated impression, or the back cover when appropriate. All other original copies are filmed beginning on the first page with a printed or illustrated impression, and ending on the last page with a printed or illustrated impression.

The last recorded frame on each microfiche shall contain the symbol  $\rightarrow$  (meaning "CONTINUED"), or the symbol  $\nabla$  (meaning "END"), whichever applies.

Maps, plates, charts, etc., may be filmed at different reduction ratios. Those too large to be entirely included in one exposure are filmed beginning in the upper left hand corner, left to right and top to bottom, as many frames as required. The following diagrams illustrate the method:



L'exemplaire filmé fut reproduit grâce à la générosité de:

La bibliothèque des Archives  
publiques du Canada

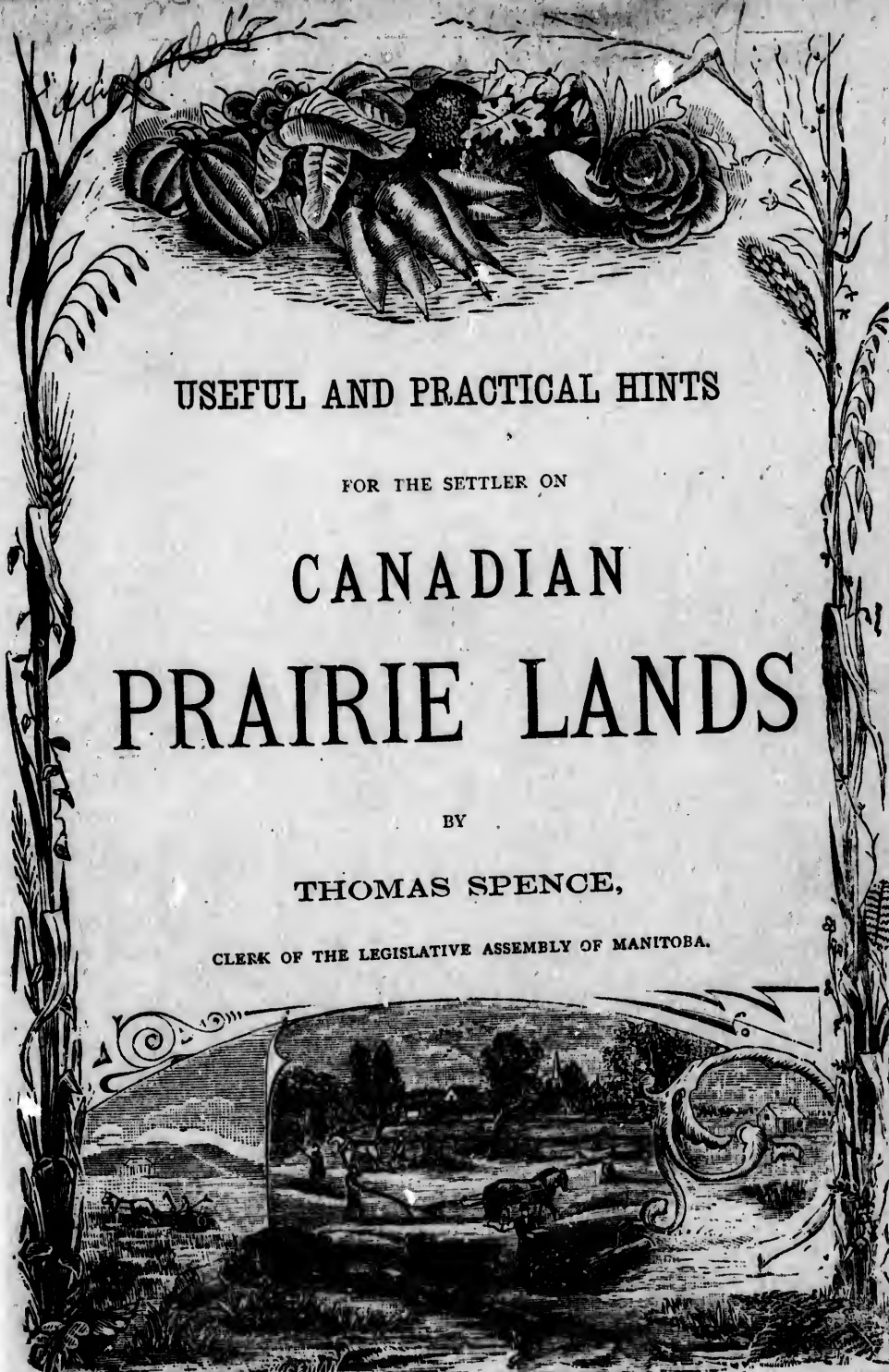
Les images suivantes ont été reproduites avec le plus grand soin, compte tenu de la condition et de la netteté de l'exemplaire filmé, et en conformité avec les conditions du contrat de filmage.

Les exemplaires originaux dont la couverture en papier est imprimée sont filmés en commençant par le premier plat et en terminant soit par la dernière page qui comporte une empreinte d'impression ou d'illustration, soit par le second plat, selon le cas. Tous les autres exemplaires originaux sont filmés en commençant par la première page qui comporte une empreinte d'impression ou d'illustration et en terminant par la dernière page qui comporte une telle empreinte.

Un des symboles suivants apparaîtra sur la dernière image de chaque microfiche, selon le cas: le symbole  $\rightarrow$  signifie "A SUIVRE", le symbole  $\nabla$  signifie "FIN".

Les cartes, planches, tableaux, etc., peuvent être filmés à des taux de réduction différents. Lorsque le document est trop grand pour être reproduit en un seul cliché, il est filmé à partir de l'angle supérieur gauche, de gauche à droite, et de haut en bas, en prenant le nombre d'images nécessaire. Les diagrammes suivants illustrent la méthode.



A decorative border surrounds the text, featuring various agricultural products such as pumpkins, carrots, and a rose at the top, and a landscape scene at the bottom. The border is composed of stylized, engraved lines.

USEFUL AND PRACTICAL HINTS  
FOR THE SETTLER ON  
CANADIAN  
PRAIRIE LANDS

BY  
THOMAS SPENCE,  
CLERK OF THE LEGISLATIVE ASSEMBLY OF MANITOBA.



C

M

REGA

USEFUL AND PRACTICAL HINTS FOR THE SETTLER

ON

# CANADIAN PRAIRIE LANDS

AND

FOR THE GUIDANCE OF INTENDING  
BRITISH EMIGRANTS

TO

MANITOBA AND THE NORTH-WEST OF CANADA.

WITH FACTS

REGARDING THE SOIL, CLIMATE, PRODUCTS, ETC., AND THE SUPERIOR  
ATTRICTIONS AND ADVANTAGES POSSESSED, IN COMPARISON  
WITH THE WESTERN PRAIRIE STATES OF AMERICA.

BY

THOMAS SPENCE,

Clerk of the Legislative Assembly of Manitoba.



2-295

Entered according to the Act of Parliament of Canada, in the year 1881,  
by THOMAS SPENCE,  
in the Office of the Minister of Agriculture.

t  
in  
P  
s  
a  
ti  
w  
y  
p  
o  
la  
th  
m  
fl  
  
pl  
an  
th  
fl  
an  
dr  
gi  
an  
to  
ma  
  
in  
  
the  
ma  
car  
and  
tio  
FE

1881.

---

PREFACE.

---

This is the fifth pamphlet published by the writer on the resources of the great North-West of the Dominion of Canada. His first issue for the information of the outside world, which appeared in June, 1871, was compiled with much care, labour, and difficulty, he is proud to say, has ever since been extensively used as an authority by the Press, not only of Canada and Great Britain, but the United States, and also received the commendation of all the public men of the country; it, and later editions covering a wider field, remain standard books of reference on the subject. For over ten years he has devoted himself and his pen to the task of making the unsurpassed resources of the vast Prairie Lands of Canada, familiar to the people of Great Britain, as the nearest and best field for the investment of their labour and surplus means. That he has not laboured wholly without reward, the liberal patronage and gratuitous distribution by the Dominion Government of several editions on both sides of the Atlantic, and the unprecedented flow of immigration as the result, affords the truest indication.

Since his first publication appeared, a magical transformation has taken place—from a country then peopled by only Indians, natives, fur traders, and a few of an adventurous class, clustering about the chief settlement of the Red River, to a Province filled with churches and school houses, a flourishing city as the capital and gateway, with a population of over 10,000, and rapidly increasing, the country dotted with thriving villages, and hundreds of miles of the Canadian Pacific Railway completed and running, giving us direct connection with the east, and stretching far over our fertile and beautiful Prairies to the west, ere long to span the continent from ocean to ocean, when with her elevators filled with wheat, furnishing the world's markets with flour, her influence will be felt from England to Russia.

In this, as in the previous publications, there has been no attempt to depict in glowing colours the resources of the country, beyond the warrant of facts.

The subjoined few of the many opinions of the Press, are submitted to the intending emigrant, that entire confidence may be reposed in the information contained in this work, and the author respectfully bespeaks for it a careful and attentive perusal, by all who are desirous of procuring homes and improving their condition, by settling in a country with home institutions, protected by the same flag, and already renowned for BEAUTY, FERTILITY, HEALTH AND PROSPERITY.

THOS. SPENCE.

ST. BONIFACE, Manitoba, Jan., 1881

## OPINIONS OF THE PRESS.

FROM THE CHICAGO INTER-OCEAN.

Mr. Spence has shown himself an admirable special pleader on behalf of that vast portion of Canada, and we must admit, although he does draw comparisons somewhat unfavorable to the Western States and Territories of the Union, that he is ready, with chapter and verse, for every fact which he puts forth. Canada's maxim now is: Build railways, and the country will soon be settled. She is now building her Canadian Pacific Railway, which will run for a thousand miles through that rich and beautiful country. This is a very shrewd dodge upon the part of our slow, but sure, neighbour across the line, and we do not doubt that, by the dissemination of such pamphlets as this of Mr. Spence, the hopes of the projectors will, in process of time, be realized. He goes minutely into a description of the entire fertile country, and, besides, gives a vast amount of information valuable and necessary for intending emigrants.—*Chicago Inter-Ocean*, June 16, 1877.

### MANITOBA AND THE NORTH-WEST—ITS RESOURCES, &c., &c.

BY THOMAS SPENCE.

The author throws himself heartily into his subject, and, from his several years residence in the North-West and general information, has qualified himself to handle it effectively. All who take an interest in our new region should procure and study it. We can endorse the compliment paid to it by the late Lieutenant-Governor, Mr. Archibald, as follows:

"I have read Mr. Spence's pamphlet, entitled 'Manitoba and the North-West,' with much interest. It draws the comparison with much force and discrimination and altogether the pamphlet is a valuable contribution on the subject of the North-West, and of particular value to the intending emigrant."—*Ottawa Times*, 1874.

MANITOBA AND ITS RESOURCES, &c., &c.

This, with the result of personal experience and observation, is by far the most valuable publication upon Manitoba, and most practical, as well as the most reliable means of conveying information for the guidance of the immigrant. It has received the highest encomiums from the late Sir George Cartier and others.—*Ottawa Free Press*, May, 1874.

### THE PRAIRIE LANDS OF CANADA,

By THOMAS SPENCE, Clerk Legislative Assembly of Manitoba

"The Prairie Lands of Canada."—A pamphlet with this title, from the pen of Mr. Thomas Spence, Clerk of the Legislative Assembly, Manitoba, will shortly be issued. The known ability of this gentleman for compiling and making attractive the facts, which a long residence in our West and keen powers of observation present to him, are a guarantee that this work will be as valuable and popular as all his former efforts in the same direction have been. Since the publication of "Manitoba and its Resources," by Mr. Spence, the circumstances of the establishment of a Government in the great unincircumscribed North-West, and the increasing activities of emigration ever Westward, have enlarged the field of observation for writers on the subject, and the present work proves how fully capable the author is of doing justice to the task. The former treatise referred to received the commendation of all the public men of the country, as the best book that had appeared on the subject, and became the accepted book of reference on Manitoba with the public. We are confident that the success of the present work will even outrun that of the earlier, and we predict that it must become the standard book of reference on the subject. Every one who has anything of national spirit should have a copy.—*Montreal Gazette*.

# CONTENTS.

---

	PAGES.
INTRODUCTION.....	7
<b>USEFUL AND PRACTICAL HINTS FOR THE BRITISH EMIGRANT.</b>	
Who should emigrate—How to come, Fares, Routes, &c.—When to come—First operations how and what to do after arrival in the country—What is required to start with and the cost of a home—The second year of settlement—Implements needed, prices, &c.—Cost of breaking up and working land—Fencing and Herding—Information on tree culture—Preparation of the soil—Method of planting—Method of cultivation, young trees and seeds—Plan for a settler's house, and how to build it, cost, &c.—Best time to settle—Advantages of the Colony system.....	8 to 17
<b>IMPORTANT MISCELLANEOUS INFORMATION.</b>	
What capital can do—What pluck and muscle may do—Public lands—System of surveys—Private lands—Railroad land explained—Coal lands—Hay and grazing lands—Mineral resources..	17 to 20
<b>DESCRIPTIVE AND GENERAL.</b>	
The soil and its agricultural capacity—Wheat growing—Stock raising—Sheep and wool growing—Dairy farming—Beet root culture and cost—Salubrity of climate and its adaption to agriculture—Frosts—Seasons—Fruits—The salad plants—Oats, barley, rye, potatoes, &c.—Flax and hemp—Bees—Game—Fish—Beauty and fertility of the North-West—Official and scientific testimony—The contrast, in comparison Western States—Internal communication—Rivers and Lakes—Conclusion.....	21 to 40

no  
at  
da  
of  
in  
tr  
fa  
w  
C  
Se  
se  
cc  
se  
tr  
an  
of  
N  
ar  
pr  
ta  
an  
en  
an  
pr  
an  
ma  
or  
is  
pr  
to  
du  
ou  
to  
lan  
and  
wri  
poi  
arr  
tho

## INTRODUCTION.

---

The birth and growth of Manitoba and the North-West Territory, now filling out the tenth year of existence, as a part of the grand Confederation of Canada, is one of the most remarkable events which men in our day have the opportunity of seeing pass before them. From a large tract of country destitute of dwelling houses, of cultivated fields, of fixed inhabitants; where Indians wandered over it, but did not leave a single trace of having made a home, or subdued the soil, of having changed the face of nature; in the short space of ten years, a large area of this desolate waste has become the home of thousands of people, coming from each Canadian Province, the United States, Great Britain, Russia, Iceland, &c. Schools, churches, mills and stores are met with almost everywhere in settlements of little over a year's growth, and opportunities for social intercourse are at the command of even those in the most sparsely settled neighborhoods. The hunting ground of the savage has been transformed into the home of the civilized and contented European; and this growth of the past will be far transcended by the growth of the future. The inducements to-day offered by Manitoba and the North-West of Canada to immigrants cannot be surpassed, and are rarely equalled by any other country on the globe,—these comprise excellence of soil and water, agricultural and commercial advantages, and educational facilities; and in addition to all these, cheap lands, and free homesteads of 160 acres, equally good, of which thousands of enterprising people are every year taking advantage, and the tenant farmer and man of small means daily attracted to the splendid opportunity here presented to acquire homes in such a productive country; not a lease for any term of years, but a perpetual ownership, to transmit to his heirs, or he may sell it; no landlord, no yearly rent to pay, nor are any church rates or tithings exacted. The settler's farm is his private domain, and his house is really his castle, he becomes his own master for life, and leaves this precious legacy to his children.

It may be affirmed that whatever Manitoba is to-day, she owes solely to the inherent merits that God has given her, of soil, climate and production, developed by the energy, industry and perseverance of her people; our success has been achieved without the phantom lures of gold or silver to blazon forth to the world, as was the case with California and Australia.

The jealousy of American Western Prairie States, and their railway landed interests, competing for immigration, circulating through their letters and papers false reports of our climate and soil, rendered necessary the writer's previous comparison and statements of facts as antidotes to these poisonous fables. But that day and era have passed. The new era has arrived of more general intelligence, and acquaintance more intimate and thorough with our commerce and our advantages of soil and climate. Our

growth cannot be checked by human agency. Immigration to a prime wheat growing region can no more be prevented than to newly discovered gold regions.

The newspapers of Canada and Great Britain, and the reports of the delegates of tenant farmers, liberally invited by the Government of Canada to judge the merits of the country by personal visits, have contained glowing pictures of the wonderful fertility of our prairies. Instances have been published and scattered world-wide, showing the certainty of wealth, or at least competence to the farmer, in the Canadian North-West, with its gems of lakes, rivers, and fringes of timber; a region already cleared and fit for the husbandman, requiring only the turning of the sod and sowing of seed to convert a park into a farm. It is little wonder then, that farming made so easy, and in a country so beautiful and attractive, should draw to it that rushing stream of immigrants which we daily witness, and that for years has been pouring into it.

The object of the present compilation is to afford later and more general information for the emigrant's guidance before leaving the old home for a new: and in addition, to furnish the most useful and practical advice to the settler commencing on his land. The utmost care has been observed throughout in the preparation of these pages, to avoid exaggeration in setting forth the inducements to immigrants. If mutual benefits are to flow from immigration, new settlers must not be attracted by representations which their future experience will not verify. *Cui Malo.*

## USEFUL AND PRACTICAL HINTS.

### WHO SHOULD EMIGRATE.

"The tillers of the soil" are the class who are most needed here, and who are most certain of achieving success by steady industry; in fact, any man, whatever his station in life may be, who is able and willing to work, and has any adaptability for agricultural pursuits, can, in the course of a few years, build up for himself and family a prosperous future and independence. Professional men and clerks should not come unless with means to take up land, and commence the life of a farmer. Carpenters, blacksmiths, etc., with a little capital to start with, can, when not working on their land, secure employment in the nearest settlements, and do well. There is also a constant demand for female servants at good wages (who are certain soon to become their own mistress). Laborers who can handle a pick and shovel will meet with ready employment for some years to come, in consequence of the construction of the Canadian Pacific and other Railways, the wages averaging \$1.50 and \$1.75 per day, equal to six and seven shillings, stg. With prudence and economy he may soon save enough to start him on a free homestead of 160 acres, his own master.

The tenant farmer with some capital, who seeks to improve his condition by his experience, and desires larger and quicker returns for labor bestowed and capital invested, has unequalled advantages offered to him, and the ordinary immigrant with even a couple of hundred pounds to begin with, can start under very favorable circumstances on a free grant of land. Detailed particulars will be found under the appropriate headings.

## HOW TO COME—FARES, ROUTES, ETC.

The cost of conveyance from any part of Canada to Manitoba is exceedingly moderate, and the steamers from Great Britain are now so numerous, that the transport of a family from any part of the United Kingdom or from Canada to the great wheat growing region and cattle raising districts in the North-West, cannot fairly be considered as a difficulty when the advantages offered are considered. A continuous line of railway now exists from Quebec and the different sea ports to Winnipeg and nearly one hundred miles west, and daily extending under rapid construction. An alternative route is offered by railway to Sarnia or Collingwood, and thence by first-class steamers to Prince Arthur's Landing and Duluth, at the head of Lake Superior. The time taken by the "lakes" is now about one day longer than by all rail, but in 1882 when the Canada Pacific will be opened from Prince Arthur's Landing, Thunder Bay, to Winnipeg, the trip by the "lakes" will be quicker than the fastest express trains of the all rail—(see map at back). Berths are provided for emigrant passengers, but they must bring their own bedding and provisions. Improvements have been added to the steamers, and the trip through the scenery of the lakes will give the traveller a good idea of the extent of the nationality among whom he has come to seek his home. At present the cost of carriage for each person (children reduced) is as follows: By rail all the way from Quebec or Montreal *via* Chicago: First-class, \$59.25; Emigrant, \$29. From Quebec or Montreal by the Lakes: First-class, \$52; Emigrant, \$24.

Cattle, goods, &c., are taken at reasonable charges by either route. Special arrangements have been made by the Grand Trunk Railway Company for emigrants going to Winnipeg in parties. To obtain the benefit of such arrangements, special application should be made in the case of each party. This may be done either directly to the head offices of the Company in London, 21 Old Bond St., E.C., to the Company's offices in Montreal, or through any of the Dominion Government Emigration Agents. (*See Addresses in Ad.*) Through tickets for Winnipeg may be obtained in England, of the Railway or Steamship Companies, or their Agents, at rates ranging from £23 to £28, 1st class, and £10 to £15 for Emigrant rate.

## WHEN TO COME.

Those with limited means should endeavour to arrive in the country as early in spring as possible, say during the month of April, or early in May, so as to have time to hunt up and locate their land. (Guides for this purpose are furnished by the Government to parties free of expense.) By arriving at this time, they have a season of seven months before them, in which to get some of their land under cultivation, build a house, and gather a crop for family use, before winter comes on; to the poor man, who expects his support from the soil, the value of time is an important consideration; as a rule, the autumn is the worst time he could come.

## FIRST OPERATIONS.

If the immigrant reaches his land by the middle of May, he can at once break up a few acres, and sow wheat, oats, barley, &c., realizing a fair crop. If he does not commence until the middle of June, he is too late to produce



most crops the same season, but he is yet in time for barley, potatoes and turnips. The best time for breaking the prairie sod is in June or July, when the grass roots being filled with juice, a thorough rotting of the turf is secured, and if turned early in June, potatoes may be dropped into the furrow, and covered by the plough with the tough sod, and will grow through it; the yield will be about half a crop. Indian corn may also be planted on the sod, while turnip seed may be sown, and very slightly covered; but the ground will be in better condition for the succeeding year where nothing is planted upon the turf. In the following spring the ground should be thoroughly harrowed, and the wheat drilled in or sown broadcast. If sown in May, it will be ready for the reaper early in August, and as soon as it is taken off, ploughing may commence for the next year's crop. An early variety of Indian corn should be used. After the furrow is turned, it may be planted by chopping a place with a single stroke of the hatchet, dropping the corn in, and pressing it down with the foot. Squashes, pumpkins, and melons grow on the sod. Beans also may be grown on the turf, and by using early varieties of seed, an abundant supply of these articles of food may be raised for the use of the family. A great advantage to the new settler in having a good yoke of oxen is, that they will work better in the breaking plough, and grow fat on the green grass that they eat at night; whereas, the horses, accustomed to a liberal supply of oats, will not do so well at first on grass alone. A tent may be used to live in at first to gain time in putting in crop.

WHAT IS REQUIRED TO START WITH AND THE COST OF A HOME.

The question is often asked, how much money is indispensably necessary for the settler to get a fair start with? The answer to this depends very much upon who the questioner is, what family he has, with how little they could be content, and many other circumstances which cannot be anticipated. It is therefore best to tell simply *what may be done*, under ordinary adventitious circumstances. In the case of a poor man going on Government land—1st. The entry fee for his homestead of 160 acres will be \$10; a tent, \$12; material for his house, if built of sawn lumber, size 16x18 feet, say \$125. The work he can do himself, and for winter this can be made warm enough by building a sod wall outside of the boards. Furniture, consisting of a cooking stove, crockeryware, half-a-dozen chairs, one table, and two bedsteads (bringing his own bedding), will require about \$40. To work his farm, a yoke of oxen, \$130; a breaking plough, \$20; waggon, \$75; total, \$392. If he begins in the spring, he can grow corn, potatoes and garden vegetables, but will have to buy flour for a family of four persons, say \$40; groceries, \$20; a cow, \$40; total, \$85. Add for two or three hogs, hoes, shovel, rake, scythe, and other incidentals, say \$40, and we have the following:

Entry Fee for homestead.....	\$ 10
Tent .....	12
Material for house .....	125
Furniture (exclusive of bedding).....	40
Farm implements and oxen .....	225
Living the first 16 months, if no wheat sown. ....	100
Incidentals .....	40
	————— \$552

equal to £110 ss. str.

or, he may even manage to get along on a lesser sum, by doing with fewer implements at first; for instance, say:

One Yoke of Oxen .....	\$120 00
One Waggon .....	80 00
Plough and Harrow.....	25 00
Chains, Axes, Shovels, etc .....	30 00
Stoves, Beds, etc .....	60 00
House and Stable, say.....	150 00

equal to £93 Stg.

\$465 00

If all his time is not employed about his own claim, he may safely calculate upon having opportunity to work for his neighbours, and earn considerable, or the construction of the Canadian Pacific and other railways will afford him all the employment he desires. The above calculation is of course only intended for the guidance of the poor man.

THE SECOND YEAR OF SETTLEMENT.

He will require cash for seed wheat, and a drag to harrow it in, say \$75; this year he may confidently expect from his fifty acres of wheat 1,000 bushels. Deducting 200 bushels for bread and seed, and selling the remainder at say 60 cents per bushel, will bring him \$480; his cash expenses may be limited to groceries, clothing, &c., say \$150, and he has \$330 to improve his house, and add to his stock and farm implements. If he breaks fifty acres again this year, and secures a crop of say 2,000 bushels (a low average) the third year, the accomplishment of which depends mainly upon his own industry, he will be able to make himself and family comfortable and have a good home. All such as have more money than the sum given above, will not be under the necessity of submitting to so many privations at first, but it may be added, three things are necessary for success in any country. They are INDUSTRY, ECONOMY, AND CAREFUL BUSINESS MANAGEMENT.

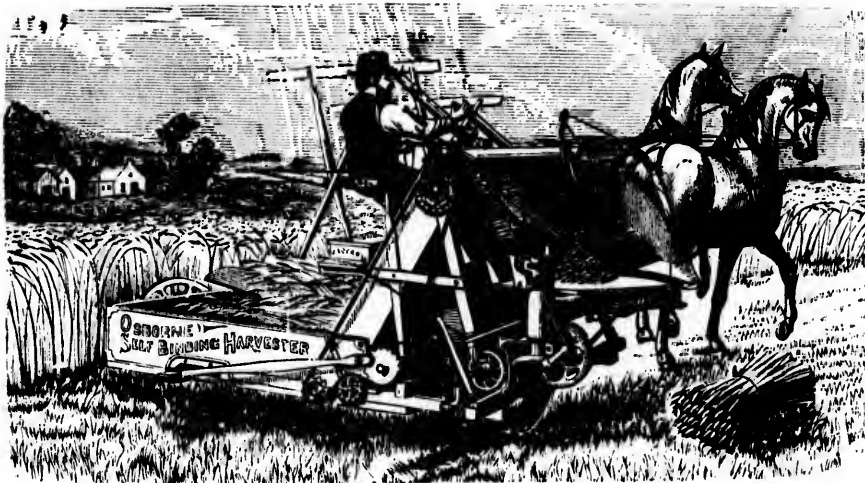
IMPLEMENTS NEEDED. PRICES, &c.

For the information of those with more ample means, and desiring to farm on a larger scale, the following is added as a detailed list of present prices at Winnipeg:—

Waggons complete.....	\$70 to \$90
Extra Prairie Breaking Plough .....	20 to 25
Cross Plough, 13 inches.....	17 to 20
Cultivators, 5 teeth.....	7 to 9
Harrows, iron with 60 teeth... ..	15 to 20
Sulky Plough.....	60 to 65

(These Sulky Ploughs are much in use, saving the labour of walking, the horses being driven as in a waggon).

Sulky Ploughs, 2 gangs.....	\$115
Seeders.....	75 to 95
Reaping Machine.....	120 to 140
Farming Mills .....	35 to 45
Self-Binding Harvester combined Reaper.....	300 to 320



(which is supplanting all others, as one man with one of these will accomplish the work of six men with the reaper of six years since).

Nails, 5 cents per lb.

Iron, 7 " "

#### IN BUILDING MATERIAL.

Common pine lumber, per 1000 ft.....	\$25.00 to \$30.00
Flooring.....	35.00 to 40.00
Siding (for outside).....	35.00 to 40.00
Window Sashes from.....	1.50 to 3.00
"    Frames.....	1.25 to 2.00
Panel doors.....	1.80 to 2.50

#### COST OF BREAKING AND WORKING LAND.

The following is as near correct an estimate of the cost of operating a prairie farm in Manitoba, or the North-West, and the methods of farming, as we can give:—

Breaking from June 1st to July 20th, cost per acre.....	\$2.50 to \$3.00
Backsetting, same breaking in August and September, per acre.....	\$2.00
Seeding (getting seed in the ground following spring) per acre.....	0.75
Cutting, Binding, and Shocking at harvest, per acre.....	2.50
Cost of raising one acre of wheat, say.....	10.75
Twenty bushels (low estimate) wheat at 70 cents.....	14.00
Profit per acre on first crop, in round numbers.....	4.75

Hauling to market costs about half a cent per bushel for every mile.

For subsequent years it will be the same as above, less the cost of breaking, \$3.00 per acre, and there will be an increase in yield of 10 per cent. a year for three years, where it remains for ten years following.

I  
munic  
yards  
sheep  
the fi  
require  
houses  
with w  
time th  
fences  
is at p  
A  
the hig  
be ma  
growing  
objecti  
must a  
only s  
to prot  
ly pro  
submit

A  
West s  
have o  
the lan  
Northe  
years a  
were cu  
rain be  
was giv

At  
grass w  
sun's p

TH  
occupie  
careless  
effectua  
which v

TH  
and gov  
with wo  
to resist

In  
are offe  
law pas

## FENCING.

It has become an established custom among farmers in most of the municipalities, to herd cattle during the summer, confining them in small yards at night. Two or three boys can thus take care of the cattle and sheep of an entire neighbourhood. This obviates the necessity of fencing the fields in which grain is growing, and limits the amount of fencing required to what is necessary for enclosing only a few acres about the houses and stabling. This saving becomes considerable, in comparison with which, the cost of herding the stock is insignificant, and in the meantime the appearance of the farm is improved by the absence of unsightly fences. Where suitable fencing timber is scarce, a three string wire fence is at present in general use, the cost being very reasonable.

An excellent plan, much adopted in Minnesota, is planting trees along the highways; it takes only a few years to grow live fences, which can easily be made to turn cattle into, by placing poles along, and nailing them to the growing trees: Resort to these expedients greatly lessens the force of the objection urged against prairie countries, for there the expense of fencing must always be a serious consideration, especially with those who possess only small capital, if the necessity exists, (as in some localities) for fencing to protect the growing crops against cattle. Legislation has already liberally provided for the encouragement of the growth of timber; we therefore submit the following:—

## INFORMATION ON TREE CULTURE.

As it is a matter of importance that every immigrant in the North-West should endeavor to increase instead of decrease the wood he may have on his farm, as it is a fixed fact in Physical Geography that the more the land is clothed with trees, the greater the rainfall. In Palestine and Northern Africa, what were the most fruitful countries in the world 2000 years ago are now barren wastes. The cause is well known: the trees were cut down, none were planted in their place, the sun evaporated the rain before it had time to permeate the soil, and in course of time the land was given up to perpetual barrenness.

At the same time it may be well to remark that with us the long rich grass which clothes the prairies must act as a great preventive against the sun's power.

The agent which has caused the destruction of forests that once occupied many parts of the prairies is undoubtedly fire, occasioned by the carelessness of travellers and Indians camping, and the same swift and effectual destroyer prevents the new growth from acquiring dimensions, which would enable it to check their annual progress.

This, however, will soon be arrested with the advance of settlement and governmental care. In the State of Minnesota, forests have sprung up with wonderful rapidity on the prairies, as the country became settled so as to resist and subdue the encroachment of annual fires.

In view of the importance of the subject the following practical hints are offered, and will be found of value to the immigrant, especially as the law passed by the Dominion Parliament affords liberal encouragement to

persons taking up homestead claims, by allowing them to secure an additional quarter section, without any other payment than an office fee of ten dollars, upon the simple condition of their planting thirty-two acres, by successive annual instalments.

Here is the experience of an extensive farmer in the State of Minnesota ; his example can be equally well followed in any part of our prairie lands :

In spring he covered seventy-two acres with cuttings of cotton wood, poplar and white willow, which have flourished finely, and, after two years, were from ten to fourteen feet high. At the same time he *planted several bushels of seed*, including two elder, oak, white and red elm, hard and soft maple and bass wood, and the sprouts from this seed in two years were three to five feet high.

#### DIRECTIONS FROM EXPERIENCE. PREPARATION OF THE SOIL.

A proper and thorough cultivation of the soil is an indisputable prerequisite to success ; without this thorough preparation, failure and disappointment are inevitable.

To secure the best results the ground must have been previously broken and the sod thoroughly decomposed ; then, with a common stirring plough, the ground to be planted should be given a thorough ploughing to the depth of ten inches, after which it should be thoroughly harrowed until the ground is completely pulverized. It is recommended that the ground for a single row for a fence or for a hedge should be prepared in the above manner, in a strip eight feet wide, in the centre of which the cuttings should be set in, leaving a margin for cultivation four feet wide on each side of the cuttings.

#### METHOD OF PLANTING.

Stretch a small rope of suitable length over the exact place where it is desirable to plant the cuttings, each end of the rope to be staked firmly to the ground. The ground immediately beneath the rope should be smoothed off with a small iron rake. The planter should then take up as many cuttings as he can conveniently carry under one arm and proceed to stick them in the ground close up to the rope. They should be stuck deep, leaving not more in any case than two buds out of the ground. If stuck in the full length it is just as well. It is advised that they should be stuck in standing say at the angle of from 30 to 45 degrees and invariably butt end first. For a live fence or hedge, they should be stuck as nearly as possible one foot apart, 5280 cuttings will plant a mile of such fence. Two good hands can plant this mile in a day if the ground is partly prepared for them.

#### METHOD OF CULTIVATION.

As soon after planting as the weeds and grass show themselves, hoeing should be commenced ; every cutting should be carefully hoed. All of the four feet margin on each side of the row should be hoed thoroughly, as soon afterwards as the cuttings have started, so that the row may be distinctly seen, the grass and weeds killed, leaving all of the four feet on each side of

the row perfectly mellow. This process should be repeated two or three times during the season, as not a weed or a bunch of grass should be allowed to go to seed. Great care should be exercised in hoeing not to disturb the cutting of the young tree. After harvest all the weeds and grass found within the four feet margin should be gathered and burned.

Look out for prairie fires, and, if the plantation is in danger, *burn round it*.

It cannot be sufficiently impressed upon the tree planter *that thorough* cultivation the first season will ensure the success of the plantation. The second year the plants will do with half the cultivation, and the third year no further cultivation will be required. By pursuing this treatment the cuttings will be grown in five years to a size and height which will form an impenetrable barrier to horses and cattle, as well as a valuable windbreak. Ten acres planted in this way in rows eight feet apart will in that period (5 years) not only furnish all the fuel and fencing necessary to support a farm, but will also bring a handsome income from the fence poles which may be spared to less fortunate neighbors.

The earlier the cuttings are planted after the frost is out of the ground the better, but the planting may be continued to the 1st of June with success. Cuttings set in spring ploughing time should have the earth pressed on each side of them as fast as the planting progresses.

The cuttings may be procured from the nearest natural groves or belts of woods on the margin of streams or the river sides.

#### YOUNG TREES AND SEEDS.

Young aspen and poplar, one or two years old, may be gathered in waggon loads on the prairie in the vicinity of groves which fires have not run over. The seeds of the ash-leaved maple, the ash, and the elm (very pretty and suitable for protection round the house and stables) may be found in abundance from these trees along the margins of the streams, and should be gathered as soon as ripe. Soft maple and elm ripens in June, and should be planted before the seeds are dried, or they fail to come up; the seed should be planted in drills in small furrows previously made by the hoe, and should be liberally sown, then covered with a small iron rake to a depth of from one to two inches. Seed necessary to be kept throughout the winter should be kept in moist sand, in boxes or barrels, two parts of sand to one of seed, and where they will be kept cool, and at about their natural moisture.

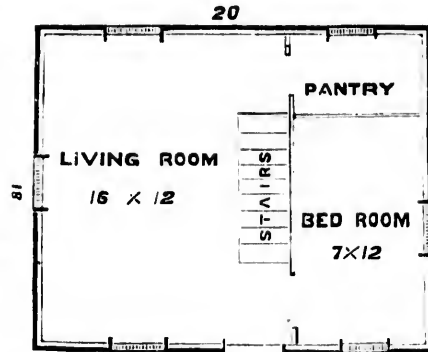
#### PLAN FOR A SETTLER'S HOUSE.

A very comfortable house, large enough for a family of several persons, may be built at a cost of \$236, or about £47 4s. stg. It would be 16 ft. 20 inside, contain a living room 13 x 16, bedroom 7 x 12, pantry 4 x 7, on the ground floor, with stairs leading to the attic. The studding would be twelve feet from the sills to the eaves, the lower storey eight feet, four feet above with a sloping roof will give an attic large enough for good sleeping accommodation. The house would need five windows, one outside and two

inside doors. The items of expense would be approximately as follows, not including assistant labour that may be required :—

4,000 feet common lumber, at \$30.....	\$120 00
4,000 shingles, at \$6.....	24 00
Nails, &c.....	20 00
Sheathing paper (to make air tight). ....	20 00
Doors, windows, &c ..	24 00
For contingencies, say.....	28 00
Total.....	\$236 00

The following diagram shows the arrangement of the interior—ground floor.



PLAN.—Scale 3-16ths of an inch to the foot.

The eaves should project a foot or more, to carry the rain from the sides of the building,—until bricks can be obtained for the chimney, a joint of stove pipe will serve instead, only great care should be taken to protect the surrounding wood from taking fire. The plan is drawn on a scale of 3-16ths of an inch to the foot, so that a settler with the plan before him, may make his own calculations, and be his own joiner. The house should front towards the East or West. The winds prevailing in Manitoba are from the North, and South-West. Easterly storms do not often occur. In building the house, oaken posts at each corner, five to six feet in length, and eight or ten inches in diameter, should be sunk into the ground nearly their full length, and the sills spiked firmly to them. This, with proper bracing, will give sufficient firmness to the structure, against the strong winds which often prevail on the prairie. In the autumn, it should be well banked round with manure or earth, with battened walls (strips to cover the seams,) and sheathing paper (a kind of thick pasteboard); such a house is very warm, and will give good accommodation, till the owner is in circumstances to replace it with one of more ample dimensions.

#### THE COLONY SYSTEM.

The system of emigrating in small colonies will be found very advantageous to the pioneers, as well as economical; neighbors in the old land may be neighbors in the new; friends may settle near each

other, form communities and the nucleus of new settlements and towns, establish schools and, in short, avoid many of the traditional hardships which have usually attended pioneer life. The colony system is also calculated to supply the needs of all members of the community, and to furnish employment to every industry. Whenever a colony is established there will soon be near its centre the storekeeper, blacksmith, carpenter, etc., post office, school house and church, and, with the progress of the Canadian Pacific Railway and Steamboat navigation, a market. Until then an ample market, commanding high prices, is created in the interior by the influx of following settlers and the rapidly increasing trade.

The attention of the capitalist intending to emigrate is drawn to the importance and mutual advantage of this system, in which capital, directed by sagacity and enterprise, possesses such unquestionable advantages, united with industry and a plucky purpose, and in no place under the sun could it reap better rewards than under the bright skies and healthful atmosphere of this fair land.

### IMPORTANT MISCELLANEOUS INFORMATION.

#### WHAT CAPITAL CAN DO.

Of course capital, directed by sagacity and enterprise, possesses great advantages here as elsewhere; indeed, the numerous avenues being continually opened up by the rapid development of a bountiful new country like this, multiply the opportunities for its profitable employment. There is scarcely a vocation of any kind wherein the same capital and good management which insure success in older communities will not yield far greater returns here. The legal rate of interest, when not stipulated, is six per cent; but any rate agreed upon is lawful, varying from ten to twenty per cent. At the latter rate money may be safely loaned, amply secured by mortgage. Judicious investments in real estate, owing to the rapid settlement and development of the country, are sure to realize large profits. Purchasers, both of city lots and farming lands, can be made in the Province of Manitoba at all times, which will command an advance of 25 to 50 per cent within a year, and not unfrequently such advance is over 100 per cent annually. The time was a few years ago, when this could be done without discrimination by the venturer, the sole condition of acquiring fancied wealth being to take hold. Now, good judgment is required to cause real estate or any active business to yield much better returns than money commands at interest.

#### WHAT PLUCK AND MUSCLE MAY DO.

Great as are the unquestionable advantages which a union of money and industry possess, there is no country under the sun where unaided muscle, with a plucky purpose, reaps greater rewards than under the bright skies and helpful atmosphere of this fair land.

Feeling himself every inch a man, as he gazes upon the unclaimed acres which shall reward his toil, the settler breathes a freer air, his bosom swells with a prouder purpose, and his strong arms achieve unwonted



results. Any man whose capital consists on his arrival of little but brawny arms and a brave heart, may do as others have done before him, select a homestead in some of the many beautiful and fertile regions westward, and into which railroads will rapidly penetrate ; after which, being allowed six months before settling upon the land, he may work upon the railroad and earn enough of money to make a start in a small way ; and by the time he produces a surplus, the railway will be within a reasonable distance to take it to market ; he finds himself the proud possessor of a valuable farm, which has cost him little but the sweat of his brow.

#### PUBLIC LANDS.

Under the provisions of the Dominion Public Lands' Act (*for which, see official notice at end*), a vast area of land abounding in all the elements of health, beauty, and fertility, of much greater extent than many of the principalities of Europe, is open for the landless of all nations of the earth, to enter upon and possess, who may be the head of a family, male or female, or who has attained the age of eighteen years, may become the owner of a farm of 160 acres without paying for it, by simply cultivating and residing upon the land for three years, and the land thus acquired without cost (with the exception of the office fee for entry, of \$10), is exempt by law from liabilities for all debts previously contracted, thereby showing that we have no limitation as to the value of the farm or residence thus secured to the family ; whatever its value *may become*, it remains the shelter, the castle, the home of the family, to cluster round in the hour of gloom and disaster, as securely as they were wont to do in the sunshine of prosperity. Such an exemption law will be found a blessing to thousands of worthy men, women and children.

Here every man may enjoy the reward of his labor, and become an independent land proprietor. However poor, he may possess equal rights, and equal political opportunities, with the rich and prosperous.

All information as to the nature of particular localities, where the immigrant may desire to settle, will be afforded him for his guidance by the officers of the Dominion Lands Branch of the Department of Interior at Winnipeg, or any of the district offices.

#### SYSTEM OF SURVEYS.

Each township consists of thirty-six sections of one square mile each, and road allowances, of one chain in width between all townships and sections.

Sections are numbered 1 to 36, and a raised mound of turf with picket marked, being at each corner of section.

#### PRIVATE LANDS.

Farms of various degrees of improvement, near a town, are frequently offered for sale at from \$5 to \$15 per acre, such price being often less than the cost of the buildings and fences. These cases occur not from the undesirable character of the property, so much as from the restlessness and love of change, characteristic of the people of the country. The Hudson's

Bay Company are the owners, under the Dominion Lands Act, of two sections in every surveyed township in the great fertile belt. Each section consists of 640 acres, and is sold either in block or in quarter sections of 160 acres each; the prices of these lands are regulated according to location and quality, ranging from \$4 per acre and upwards, with easy terms of payment. During the past year 35,000 acres were sold at an average price of \$6 per acre.

#### RAILROAD LANDS.

As this pamphlet may be read by many in Great Britain, who are unacquainted with the meaning of the term "railroad lands," we deem it important to offer a few words by way of explanation. All the lands are originally the property of the Crown, and are granted to aid in the construction of railways, as experience has shewn that a locomotive running through a new country tends as much to civilize it as to settle it up; the wisdom of this disposal of lands by the Government of Canada can only be commended. Such lands are situate along the lines of road to which they were granted, and consist of the odd numbered sections, (the even numbered sections being for free homestead entry as Government lands) on both sides of the line for a certain number of miles. The title to such lands are good, coming directly from the Crown to the Railway Company.

#### COAL LANDS.

The route of the Canadian Pacific Railway is indicated as the natural pathway of commerce, by the vast and inexhaustible coal beds through which it runs for over two hundred miles.

From Geological reports, and the Engineer's surveys, the district through which it passes possesses one of the largest coal fields in the world.

Between the 59th parallel and the North Sea, it has been calculated that there cannot be much less than 500,000 square miles that are underlaid by true coal. The average breadth of this belt is about 280 miles. In addition to the coal, this country contains rich deposits of iron ore.

On the North Saskatchewan River, coal prevails with little interruption in beds two and two-and-a-half feet thick on the bank of the river, from a little below Edmonton, upwards for two hundred miles.

On the Pembina River, seventy miles to the west, there is a seam ten feet thick, of a very superior quality. On the Battle River it is also noted, and in the Red Deer Branch of the South Saskatchewan, 170 miles from its mouth, are extensive deposits of coal, and at 100 miles further up it is there in beds so close, that, of 20 feet of strata exposed, 12 feet are coal.

Coal has lately been discovered on the Souris River, at a point near the international boundary line, and the South Western Railway is now under construction to connect that point with the City of Winnipeg, a distance of nearly 200 miles, through a magnificent and exceedingly fertile country.

The Minister of the Interior has the power to protect persons desiring to carry on coal mining in the possession of the lands on which such mining may be carried on, provided the proper application is made, with a deposit of one dollar per acre, under the terms of the Dominion Lands Act.

## HAY AND GRAZING LANDS.

The wild grasses of Manitoba and the North-West, extending to the foot of the Rocky Mountains, are famous for the nourishment they contain. They not only afford rich and ample pasturage upon which horses, cattle and sheep may thrive well, but also make an excellent quality of hay; many farmers prefer them to timothy for the latter purpose. Three varieties, the buffalo and herd grass and the blue joint, after the ground has been mowed over a few times, become fine and succulent, and cure very nicely, and even the coarsest variety of slough grass is similarly affected, though its improvement is not so marked. Cattle subsist during the winter on hay of this latter description, and keep in good order. For the encouragement of persons desirous of going into stock-raising on a large scale, the Government is empowered under the Lands Act to grant leases of unoccupied Dominion Lands for grazing purposes to any person, for such term of years, and at such rent in each case as may be deemed expedient, conditionally, that the Minister of the Interior may, on giving two years' notice, cancel the lease at any time during the term.

## MINERAL RESOURCES.

Our mineral deposits—next in importance to coal, already referred to—may, so far as yet known, be embraced in the following:

*Iron*—Is found throughout the coal region, at accessible distances from the line of railway, and gives promise of the establishment of future centres of industry along the line of the Canadian Pacific Railway.

*Gold*—Is found on the numerous sand-bars of the North Saskatchewan River, paying from \$5 to \$10 per day, with limited appliances for mining and washing. As the country settles up, and supplies become cheaper and more easily obtained, no doubt enterprising proprietors will yet make valuable discoveries in the numerous streams running from the eastern slope of the Rocky Mountains.

Rich gold and silver-bearing quartz veins have recently been discovered on some of the thousands of the islands which dot the beautiful Lake of the Woods; the discoverers have as yet, from want of capital, been unable to properly develop these mines; but when the attention of capitalists is attracted, no doubt future enterprise will cause operations to be conducted on a large scale, supporting a numerous mining population. A portion of the Pacific Railway is now completed and running to Rat Portage, a thriving little town at the head of the Lake, east from Winnipeg 136 miles.

*Limestone*.—A fine quality is found in many portions of the country, and affords ample material for the manufacture of lime.

*Clay*.—A kind of blue clay, underlying the soil, makes brick of a good quality. White marl occurs in large beds; it is used for pottery-making, and also makes a hard, durable brick, similar to the famous "Milwaukee brick."

*Salt Springs*—Are numerous—some of them very pure, yielding upwards of a bushel of salt to thirty or forty gallons of brine, the writer having himself made salt from the brine of that strength as obtained on the surface without boring, and of as good a quality as American or English production. With the development of the country, this source of wealth must yet be an important one.

## DESCRIPTIVE AND GENERAL.

## THE SOIL AND ITS AGRICULTURAL CAPACITY.

The soil is generally an alluvial black argillaceous mould, rich in organic deposit, and resting for a depth of eighteen inches to four feet. on a tenacious clay. Scientific analysis develops the presence in due proportion of elements of extraordinary fertility, comparing favorably with the most celebrated soils of the world. This theoretic excellence is amply confirmed by the practical results of agriculture, as is shewn hereafter.

The following important analysis of a sample of the prairie soil of this country, was made at the instigation of some gentlemen of capital, practical farmers in Scotland, who visited the country, and became so favorably impressed as to invest largely in lands.

The analysis is by Dr. Macadam, the well-known lecturer on Chemistry, in the University of Edinburgh, and proves beyond doubt that to the farmer who desires to select for his future home a country which has the most productive soil, and promises the richest harvest, nowhere in the world are greater attractions offered :

ANALYTICAL LABORATORY, SURGEON'S HALL,  
EDINBURGH, 14th December, 1876.

## ANALYSIS OF SAMPLE OF MANITOBA SOIL.

Moisture.....		21.364
Organic matter containing nitrogen equal to ammonia, 23°.....		11.223
Saline matter :		
Phosphates.....	0.472	
Carbonate of lime.....	1.763	
Carbonate of magnesia.....	0.937	
Alkaline salts.....	1.273	
Oxide of iron.....	3.115	
		7.560
Silicious matter :		
Sand and silicea.....	51.721	
Alumina.....	8.132	
		59.853
		100.000

The above soil is very rich in organic matter, and contains the full amount of the saline fertilizing matters found in all soils of a good bearing quality.

(Signed),

STEPHENSON MACADAM, M. D.

*Lecturer on Chemistry, &c.*

An important feature in the soil of our prairies is, that its earthy materials are minutely pulverized, and is almost everywhere light, mellow, and spongy.

With these uniform characteristics, the soils are of different grades of fertility, according to local situation. The limestone sub-strata of this region, with its rich, deep, calcareous loam and retentive clay sub-soil, is always associated with a rich wheat development, while its hot and humid summers fulfil all the climatological conditions of a first-rate wheat country.

Some fields on the Red River have been known to produce twenty successive crops of wheat without fallow or manure, and the yield has frequently reached as high as forty bushels per acre.

Blodgett (an American authority) states "that the basin of the Winnipeg is the seat of the greatest average wheat product on this continent, and probably *in the world*."

As will be observed by the analysis of Dr. Macadam, a general ingredient of the soil is sand, of which silica is the base, as of all good soils. It plays an important part in the economy of growth, and is an essential constituent in the organism of all cereals. We are told that about 67 per cent. of the ash of the stems of wheat, corn, rye, barley, oats, &c., is pure silica, or flint. It is this which gives the glazed coating to the plants and gives strength to the stain. Now this silica is an acid and is insoluble, but readily combines with lime, soda, magnesia, potash, and the other ingredients of our soil, and in this condition is readily available to the use of the plant, and forms an essential element in the growth of the cereals; from this and other causes is attributable the superiority of our wheat over all other grown East or South.

#### WHEAT GROWING.

The average yield of wheat in Manitoba, deduced from the aggregate of local estimates, is twenty-five bushels to the acre, the range of ordinary yields being from fifteen to thirty-five. Experience has taught us to allow largely for the disposition to base general inferences on the most striking and notorious instances, and for the general habit of confounding a usual result with an average one.

A comparison of the yield of wheat for past years in Manitoba with the best districts of the United States will show its superiority over them, viz:—

Red River Spring Wheat, average production,	25 bushels per acre.				
Minnesota	do	do	20	do	do
Wisconsin	do	do	14	do	do
Pennsylvania	do	do	15	do	do
Massachusetts	do	do	16	do	do

The weight as compared with the following States, is:

Manitoba Spring Wheat	.....63 to 66 lbs. to the bushel.
Minnesota	do.....60 to 65 lbs. do
Illinois	do.....52 to 58 lbs. do
Ohio	do.....57 to 60 lbs. do
Pennsylvania	do.....57 to 60 lbs. do

The soundness and fullness of the grain is unmistakeably indicated by the fact, that it *will command a higher price* than any Western State grain, when it goes to market unmixd and well cleaned.

The fact established by climatologists that "the cultivated plants yield the **greatest** products near the Northernmost limit, at which they will grow" is fully illustrated in our productions.

An extensive Miller in Minnesota, was astonished on visiting Manitoba, at the yield of wheat in his hand. "We have had an excellent harvest in Minnesota, but I never saw more than two well formed grains in each group, or cluster, forming a row, *but here, the rate is three grains in each cluster. That's the difference between twenty and thirty bushels per acre.*"

Winter wheat has not been tried, except in one or two instances, the result being unfavourable to its reputation as a reliable crop; and an opinion is generally prevalent, that it cannot be grown successfully; but this opinion is not warranted by facts. The success of winter wheat depends peculiarly upon having a moderate and sure covering of light snow, not condensed by thaws, and packed close by warm winds. Such a snowy covering requires—firstly, a moderate fall of snow; and secondly, a low, uniform range of temperature, free from winter rains and prolonged thaws, sufficient to dissipate the snowy covering.

These are, in fact, the decided characteristics of our winters. The precipitation of snow at Manitoba is about 25 inches for the whole winter.

It is remarkable also that light falls coincide with quite low temperatures. The short noon-day heats, which often carry the thermometer for an hour or two above freezing point in winter, are not sufficient to create a thaw, and even a whole day, but slightly above freezing, will not seriously affect the snow.

Wheat-growing has been termed the "back-bone of agriculture." When the vital importance of maintaining and increasing the production of a grain so essential to civilized man is considered, it cannot be assigned a less place in agricultural economy. Wheat is pre-eminently the food of civilized nations; and perhaps there can be no surer measure of their civilization than the culture and consumption of that cereal. History affirms its agency in shaping the power and character of nations. They have grown sturdy and progressive in their ratio of wheat consumption by all classes. Scientific analysis confirms the indications of History. Anatomy and Chemistry show that food to be best, which gives toughness to muscular fibre, and tone to the brain.

England, who has long since been the conceded mistress of the seas, and whose dependencies will nigh encircle the globe, has so stimulated and enlarged her capacity for wheat-growing, that her annual average is twenty-eight bushels per acre; but her consumption so far outruns her production, that she lays the world under contribution for her supplies of bread. The grave significance of the question involved is not susceptible of concealment, when the fact is considered that while the consumption of wheat, as the choice food of the human race, is rapidly extending, the capacity of wheat-growing regions for its production is rapidly diminishing. We are told that in New England, U. S., the entire wheat product of a year is barely sufficient to feed her own people for three weeks, and the State of New York for six months. In the ten years ending in 1860, the wheat crop of only four States decreased 6,500,000 bushels. In the light of these facts it is not difficult to foresee that the North-West of the Dominion of Canada must yet assume a proud pre-eminency in wheat-growing.

The following facts are demonstrated:

*First.*—That there exists a constantly and inevitably increasing

foreign demand for breadstuffs, with a constantly increasing demand for domestic consumption.

*Second.*—That therefore the value of wheat, as a commercial staple, is advancing in a compound ratio.

*Third.*—That, within this zone, the climate and other causes tend to concentrate the growth of wheat in the best districts.

*Fourth.*—The prairie lands of Canada are the best of these wheat districts, having the largest average yield, the most certain crops, and the best and healthiest grains.

#### STOCK RAISING.

The experience of many years shows that no physical impediment arising from climate or soil, exists to prevent the prairies of our North-West becoming one of the best grazing countries in the world, and with the introduction of immigration, in few years, the beautiful prairies of the North-West will be enlivened by numerous flocks and herds, and the cattle trade, already springing into importance, will rapidly increase. It is understood that a prominent member of the Senate of Canada is at present making arrangements to enter upon the raising of thorough-bred stock, horned cattle, horses, sheep and pigs, and with that view, is now in treaty with the Government of the Dominion for the purchase and lease respectively of very considerable tracts of grazing land near the foot of the Rocky Mountains, for a stock farm. For raising cattle and horses, this country is equal to the State of Illinois, and for sheep-raising it is far superior. The quality of the beef and mutton raised upon our northern grasses, has been pronounced of superior excellence. Among the peculiar advantages of Manitoba for stock-raising and wool growing, the most prominent are—1st. The richness and luxuriance of the native grasses. The grass is mainly cut on the swamps and meadows, which chequer the prairies, or fringe the streams and lakes, 2nd. The great extent of unoccupied land, affording for many years to come, a wide range of free pasturage. 3rd. The remarkable dryness and healthfulness of the winter. The cold dry air sharpens the appetite, and promotes a rapid secretion of fat, and vigorous muscular development. All point to stock-raising as one of the most important and promising of the diversified channels into which the industry of the immigrant and capitalist is to be directed. Notwithstanding the expensiveness and difficulty of stocking farms in a new country like this, where animals must be procured at a distance of hundreds of miles, the progress already made in this direction affords a gratifying proof of the rapid growth of this important interest.

#### SHEEP AND WOOL GROWING.

There is not room in this guide to give the subject of wool growing the attention which its importance deserves. The experience of forty years, and of some who have been engaged in the business in Australia, establishes beyond a reasonable doubt the following conclusions :

1.—That from the nature of our climate, and the general undulating character of the prairies, the richness of the grasses, and the purity of the waters, this country is adapted in an eminent degree to the healthful and profitable breeding of sheep.

2.—That sheep are entirely free from the diseases which cut them off, so largely in more southern climates.

3.—That the characteristic dryness of our winters, not only protects them from the casualties to which they are exposed in moister winter climates, but stimulates them to a more healthy and vigorous growth.

4.—That the naturalization of sheep imported from Illinois, Ohio, and other middle States of America, *improves the quality of their wool.*

5.—That it is by *far the most profitable branch of industry in which the settler with capital can engage*, especially in connection with stock-raising.

Prolificas is the soil, it is far from the Eastern markets, and the bulky and weighty products of the field largely consume themselves in the cost of transit. Wheat which is bought here for 60 cents, sells for 90 cents or \$1.00 in Montreal or New-York, costing the farmer 30 to 40 cents for transportation. A few years, it is true, will complete a great system of internal improvement by means of the Canadian Pacific Railway. But even then, it will be far more profitable to grow wool; the best information on this subject shews that it costs about 15 cents to produce a pound of wool, which sells here for 30 cents, yielding a net profit of 15 cents per pound, and mutton at present commands from 12½ to 15 cents per pound. The cost of producing a bushel of wheat varies with the yield, the average cost being about \$5.50 per acre, or about 32 cents per bushel for an average yield of 20 bushels to the acre. The average product of wool is not subject to fluctuation, and the price also is far steadier than that of breadstuffs. Well-fed ewes produce fleeces from 3 to 3½ pounds. Wethers produce fleeces from 6 to 8 pounds, the wool being of a good quality. All breeds stand the winter cold well, but the Cotswold the best. An instance came to the knowledge of the writer, where a flock of about twenty strayed away in the beginning of winter and were found in the spring fat, and none missing, but an addition to the flock in lambs. An experienced settler writes as follows: "I believe this to be equal to any country for sheep growing. I prefer the Cotswold breed to any other for this country, as they are good shearers, prolific breeders, and good for mutton. My sheep have been troubled with no disease, but the dogs have killed and wounded some. I believe that in this branch of husbandry this country has few equals, and no superiors in any country on the globe."

To simply raise a crop of wheat from the new prairie, is but one remove from barbarism; but when we see upon a farm a flock of pure blood sheep, and a herd of well bred cattle, we are sure that behind them all is superior intelligence, and we feel confident the farm is not running out.

#### DAIRY FARMING

Must also become in a few years an important source of wealth. It is now conducted on a very large scale in the other Provinces, in connection with cheese and butter factories for European consumption. In the Province of Ontario alone no less than 200 cheese factories being in operation, that Province deriving an income of nearly two millions of dollars a year from this single article of produce, and the quality esteemed almost as highly as the best English cheese.



With the progress of improved communications, what a vast field is presented for the development of that branch of agricultural enterprise in this great grazing country.

#### THE BEET ROOT.

Beet root sugar manufacturing will certainly, at no distant day, be a question of much interest in this part of Canada, and occupy the attention of the capitalist, for without doubt the rich deep mould of our soil is immensely superior to anything upon the continent for the production of the sugar beet.

It is the opinion of the *Monetary Times* that the production of beet root sugar, if prosecuted on a sufficiently large scale, could be made very profitable. A calculation is given, setting forth the estimated results of the manufacture of a thousand tons of sugar beets in the States of New York and Pennsylvania, as made by an American gentleman who has given long consideration to the subject. It is as follows:

EXPENSES.	
1,000 tons of beets at \$4 per ton.....	\$4,000
Estimated cost of manufacture at \$5 per ton .....	5,000
	\$9,000
Total.....	
RESULT.	
200 tons pulp at \$2 per ton.....	\$ 400
30 " syrup at \$20 per ton.....	600
60 " of sugar at \$250 per ton.....	15,000
	\$16,000
From which deduct expenses.....	9,000
	\$7,000
Leaves a profit of.....	

The sugar beet will grow on our prairie soil to great perfection. Those sent from here to Philadelphia were the surprise and admiration of thousands from all parts of the world.

This fact being established, it next becomes important to have a proper test made of the percentage of saccharine matter the beets grown in our soil will yield, and its suitability for manufacture. It is advisable the beets intended for sugar manufacture, should be grown on old ploughed land, rather than the newly ploughed prairie.

This manufacture, which has elsewhere been found so profitable, will probably be found the same in the North-West of Canada.

#### SALUBRITY OF CLIMATE AND ADAPTION TO AGRICULTURE.

Of paramount importance to the emigrant is the healthfulness of the locality which is to be the scene of his future labors, and the home for himself and family. What to him are fair fields, flowering meadows, buried in the luxuriant growth of fertile soils and tropical suns, if they generate fever-producing miasma and vapour? What are soft and perfumed breezes, if they waft the seeds of pestilence and death? What are bountiful harvests:

of golden grain, rich and mellow fruits, and all the wealth the earth can yield, if disease must annually visit his dwelling, and death take away, one by one, the loved and the young? It is well known that some of the fairest portions of the Western States are so fruitful of the causes of disease as almost to preclude settlement. And thousands have left their comparatively healthy Canadian and European homes to find untimely graves in the prairie soil of Indiana, Illinois, Iowa and Missouri. And even in the sections of these States deemed most healthy, the climate has an enervating effect upon those accustomed to the bracing air of Northern Europe and our Eastern Provinces.

The dryness of the air, the character of the soil, which retains no stagnant pools to send forth poisonous exhalations, and the almost total absence of fog or mist, the brilliancy of its sunlight, the pleasing succession of its seasons, all conspire to make this a climate of unrivalled salubrity and the home of a joyous, healthy, prosperous people, strong in physical, intellectual and moral capabilities. Therefore, the assertion that the climate of our North-West is one of the healthiest in the world may be broadly and confidently made, sustained by the experience of its inhabitants. Some of the hardiest and strongest men the writer has ever seen are Europeans and Canadians, who came to this country at an early date, and finally became settlers. Agriculture, therefore, cannot suffer from unhealthiness of climate.

Its distinguishing features in relation to husbandry. The melon, growing in open air, and arriving at perfect maturity in August and September, may be briefly explained by reference to the amount of sunlight received during our growing seasons, viz: whilst at New Orleans in July they have fourteen hours of sunlight, we have sixteen, with much longer twilight than they, consequently our vegetation grows more rapidly than theirs, and matures much sooner. This is a beautiful law in compensation, as what we lack in heat is made up in sunlight during our summers. Changes in our temperature, it must be admitted, are sometimes sudden and violent. We are about half way to the North Pole, and subject to either extremes. This instead of being a disadvantage is rather in our favour, it gives variety, a thing desirable at times. Then again these changes are, for the reasons already given, seldom pernicious. Plants and animals are armed with the proper implements for resistance. I would not infer that we are subject to hurricanes, or other violent commotions of the atmosphere, any more or as much as other places. But we have a touch at times of both extremes, a vibratory movement of the climates of the torrid and frigid zones.

The seasons follow each other in pleasing succession. As the sun approaches its northern altitude, winter relaxes its grasp, streams and lakes are unbound, prairie flowers spring up, as if by the touch of some magic wand, and gradually spring is merged into the bright beautiful June, with its long warm days, and short, but cool and refreshing nights. The harvest months follow in rapid succession, till the golden Indian summer of early November foretells the approach of cold and snow; and again winter, with its short days of clear bright sky and bracing air, and its long nights of cloudless beauty, complete the circle.

The average fall of snow is about six inches per month. The snow falls in small quantities, at different times, and is rarely blown into drifts so as to impede travelling. With the new year commences the extreme cold of our winter, when, for a few days, the mercury ranges from 15 to 35 degrees below zero, falling sometimes even below that. Yet the severity of these days is much softened by the brilliancy of the sun and the stillness of the air. Thus, while in lower latitudes they are being drenched by the cold rain storms, or buried beneath huge drifts of wintry snow, we enjoy a dry atmosphere, with bright cloudless days and serene starlight nights; and when the moon turns her full orb'd face towards the earth, the night scene is one of peerless grandeur.

#### FROSTS.

Experience has shewn that the liability to disastrous frosts in the season of growth, and which so intimately concerns the interests of husbandry, is not any worse in this country than elsewhere, when the thermometer has occasionally fallen to 30° in the latter end of August; vegetation did not suffer; in fact the injury was scarcely noticeable, which may be accounted for from the following reasons:

1.—The dryness of the atmosphere (which is a peculiarity of this region), allows a much lower range of temperature without injury to vegetation, than in moister climates; and in addition to the heat, gives greater vigour to the plants, they grow rapidly but with firm texture, and are consequently able to resist much cold. On account of their excessive vitality, the same as a person who has dined heartily on rich food, is better able to bear the cold of winter.

2.—The sudden change of temperature, which is often the case in this region, one extreme following another in rapid succession, is less deleterious to vigorous plants than a gradual lowering of temperature. The earth and plants still retain the heat previously absorbed, and are thus enabled to bear an atmosphere at 20° much better than at 35°, after their latent heat has been given off. The soil of the prairie is in general dry, and is rapidly warmed by the rays of the sun in spring.

3.—The dryness of the air is accounted for from the fact that the moisture conveyed in the air has a tendency to soften the delicate covering of the plants, and thus render them more sensitive to cold.

4.—The heat retaining character of the soil. For these and several other reasons that might be mentioned, the climate of Manitoba is less subject to killing frosts than might at first be supposed, on account of its high latitude.

#### SEASONS.

The natural division of the seasons is as follows:

*Spring*.—April and May.

*Summer*.—June, July, August and part of September.

*Autumn*.—Part of September and October.

*Winter*.—November and December, January, February and March.

Frequently the weather is warm, the atmosphere hazy and calm till late in November, and the early and rapid advancement of temperature in May is strikingly represented.

T  
neglec  
being  
For th  
could  
we cor  
abound  
iveness  
and ma  
to suff

In  
and cu  
cranbe  
to the

T

Montr  
here;

we are  
as also

and be  
treat, a  
preven  
frosts d

of the

*freezing*

by mul

of stra

climate

why ev

Domin

Ca

us than

and ren

their gr

enormo

come in

the vin

TH

restrict

Macker

tive of

bushel

mealy

## FRUITS.

The culture of fruit, especially the apple, has been almost entirely neglected heretofore in this region; probably on account of there generally being such an abundance of wild fruits, or the difficulty of procuring cuttings. For this and other reasons an erroneous impression has prevailed that we could not raise fruit or apple orchards—an extraordinary inference, when we consider that many forms of wild fruit are indigenous to the country, abounding in the woodlands, and unsurpassed in flavour, size and productiveness—the principal of which are strawberries, whortleberries, saskatoon, and marsh and high bush cranberries, therefore immigrants are not likely to suffer for want of fruit.

In Minnesota the wild plum improves so much by being transplanted and cultivated as to equal any of the garden varieties. The high-bush cranberry also improves by transplanting, and makes a beautiful ornament to the grounds about the prairie farmer's house.

The celebrated and delicious apple peculiar to the neighborhood of Montreal, known as the "*Fameuse*," will no doubt be successfully raised here; although we are nearly five degrees further north than Montreal, yet we are twenty-six degrees further west. Some young trees are doing well; as also a variety from nurseries in Minnesota. The "*Fameuse*" is a rich and beautiful apple, peculiar to the climate and soil of the Island of Montreal, a rich loam with a heavy clay subsoil, which retains the rooting, and prevents the growth of the tree pushing ahead too rapidly for the severe frosts of that latitude. It should be borne in mind that it is not the severity of the winter that kills the young apple tree, but the *alternate thawing and freezing* of the south side of the tree in the spring, which can be avoided by mulching and protecting the stem of the tree when young, by a wrapping of straw; with these precautions, and procuring plants from a suitable climate, or planting the seeds, and thus acclimatising, there is no reason why every farm may not have its orchard in this as in other parts of the Dominion.

## THE SALAD PLANTS.

Cabbage, lettuce, celery, spinach, &c., are not only more tender with us than in warm climates where the relaxing sun lays open their very buds, and renders their limbs thin and tough, but are more nutritious, because their growth is slow, and their juices well digested. The cabbage attains enormous size, as also the cauliflower, pumpkins and cucumbers, the latter come in rather late, but instead of throwing too much of their growth into the vine, as they do south, fully mature, and grow very fine and large.

## OATS, BARLEY, RYE, POTATOES, ETC.

The whole group of subordinate cereals follow wheat, and are less restricted in their range, growing five degrees beyond wheat, in the Mackenzie River Valley to the Arctic Circle. Barley is a favourite alternative of wheat in Manitoba, and yields enormous returns, with a weight per bushel of from 50 to 55 pounds. Oats also thrive well. Potatoes.—The mealy quality, the snowy whiteness, the farinaceous properties, and the

exquisite flavour which distinguish the best article, reach perfection only in high latitudes.

The potatoes grown in Manitoba are well known to be unsurpassed in all the qualities named, while their prolific yield is not less remarkable. Turnips, parsnips, carrots, beets, and nearly all bulbous plants, do equally as well as potatoes.

#### FLAX AND HEMP.

The cultivation of these important crops was carried on to a considerable extent by old settlers many years ago, the product being of excellent quality, but the universal complaint at that time was the want of a market, or of machinery to work up the raw material, and this led them to discontinue this important branch of husbandry. Its cultivation is again renewed extensively by the Russian Mennonite settlers, of whom there are now between 8,000 and 10,000 in this country, who within only three or four years, are, by their untiring industry, rapidly gaining the road to wealth.

It is well known that flax and hemp come only to perfection in a cool country; their bark in southern climates is harsh and brittle, because the plant is forced into maturity so rapidly that the lint does not acquire either consistency or tenacity. No doubt the North-West of Canada will prove equal for flax and hemp growth to Northern Europe.

#### BEEES

thrive well in the North-West, as they require a clear dry atmosphere, and a rich harvest of flowers; if the air is damp, or the weather cloudy, they will not work so well. Another reason why they work less in a warm climate is, that the honey gathered remains too fluid for sealing a longer time, and, if gathered faster than it thickens, it sours and spoils. Our clear, bright skies, dry air and rich flora, are well adapted to the bee culture, and, since the process of burying bees during the winter has been introduced successfully in Minnesota, and generally adopted in the North-Western States, the length and coldness of our winter ceases to be an obstacle. In fact, experience in Minnesota proves that bees succeed better there, consume less honey during the winter, and the colony comes out much stronger than in warmer climates.

#### GAME.

The prairies and forests abound in great variety of wild animals, among which are deer, bears, wolves, foxes, wild-cats, raccoons and rabbits, Otter, mink, beaver and muskrat are the principal aquatic animals that frequent the water-courses. Buffalo in the Western prairies. Pigeons, grouse, partridges and prairie chickens are among the feathered game. In the fall and spring ducks and geese are found in immense numbers.

#### FISH.

The larger lakes abound in white fish, a delicious article of food, weighing from four to five pounds. The fisheries of the lakes, when

proper  
and st  
trout i

T  
prairie  
prairie  
The g  
on the  
poplar  
pleasin  
I  
equall  
out as  
the ot  
would  
able  
genera  
sandy  
the qu  
a new  
to the  
fore, i  
finest

I  
State  
in exp  
the fo  
"  
Lake  
numbe  
to the  
great  
Hemis  
from t  
30' N.  
the R  
strong  
land v  
of the  
"  
pastur  
Throu  
althou  
mined  
sixty-  
if the  
one-th

properly developed, will form an important source of revenue. The rivers and streams abound in pickerel, pike, catfish, sturgeon, gold-eyes, &c., and trout in the mountain streams.

#### BEAUTY AND FERTILITY OF THE NORTH-WEST.

Throughout our prairie lands is found not the illimitable level, treeless prairies which distinguish Illinois, but a charming alternation of woods and prairie, upland and meadow, characterize the topography of the country. The general surface is undulating, well watered and ample building timber on the main streams. The prairie is frequently interspersed with groves of poplar, and oak openings, in many parts numerous lakes, presenting a pleasing and enlivening appearance.

It would be absurd to expect any country of this vast extent to be all equally fit to receive the plough at once. If only one-third is here pointed out as awaiting the industrious hand of man to ensure him independence, the other two-thirds are parts requiring draining or partial clearing. It would also be absurd to suppose it all equally fertile, as there is a considerable difference between the deep beds of black vegetable mould which generally prevail, and of course there are occasional bad spots and poor sandy ground, which must be found in all countries; but prominent among the questions proposed by the emigrant or capitalist seeking a new home in a new country are those concerning the climate, its temperature, adaptation to the culture of the grand staples of food, and its healthfulness. Therefore, in proof of our assertion that the North-West of Canada offers the finest and most inviting field for Emigration, the following is submitted as

#### OFFICIAL AND SCIENTIFIC TESTIMONY.

In 1858, Captain Palliser was requested by the Under Secretary of State for the Colonies to state his opinion on the country he was engaged in exploring, and he describes the region drained by the Saskatchewan in the following words:—

“The extent of surface drained by the Saskatchewan and other tributaries to Lake Winnipeg, which we had an opportunity of examining, amounts in round numbers to one hundred and fifty thousand square miles. This region is bounded to the North by what is known as the strong woods, or the Southern limit of the great circum-arctic zone of forest which occupies these latitudes in the Northern Hemisphere. This line, which is indicated on the map, sweeps to the North-West from the shore of Lake Winnipeg and reaches its most Northerly limit about 54° 30' N. and longitude 119° W., from where it again passes to the South-West, meeting the Rocky Mountains in latitude 51° N. and 115° W. Between this line of the strong woods and the Northern limit of the true prairie country there is a belt of land varying in width, which at one period must have been covered by an extension of the Northern forests, but which has been gradually cleared by successive fires.

“It is now a partially wooded country, abounding in lakes and rich natural pasturage, in some parts rivaling the finest park scenery of our own country. Throughout this region of country the climate seems to possess the same character, although it passes through very different latitudes, its form being doubtless determined by the curves of the isothermal line. Its superficial extent embraces about sixty-five thousand square miles, (whether geographical or statute he does not state; if the former, it would be about eighty-five thousand statute), of which *more than one-third* may be considered as at once available for the purposes of the agricul-

tourist. Its elevation increases from seven hundred to four thousand feet as we approach the Rocky Mountains at Edmonton, which has an altitude of 3,000 feet. Wheat is cultivated with success. The least valuable portion of the Prairie Country has an extent of about eighty thousand square miles, and is that lying along the Southern branch of the Saskatchewan, Southward from thence to the boundary line, while its Northern limit is known in the Indian languages as the "edge of the woods," the original line of the woods being invaded by fire.

*"It is a physical reality of the highest importance to the interests of British North America that this continuous belt can be settled and cultivated from a few miles West of Lake of the Woods to the passes of the Rocky Mountains, and any line of communication, whether by wagon or railroad, passing through it, will eventually enjoy the great advantage of being fed by an agricultural population from one extremity to the other. No other part of the American Continent possesses an approach even to this singularly favorable disposition of soil and climate."*

"The natural resources lying within the limits of the Fertile Belt, or on its Eastern borders, are themselves of great value as local elements of future wealth and prosperity; but, in view of a communication across the continent, they acquire paramount importance. Timber, available for fuel and building purposes, coal, iron ore are widely distributed, of great purity and in considerable abundance; salt, in quantity sufficient for a dense population. All these crude elements of wealth lie within the limits or on the borders of a region of great fertility."

His Grace Archbishop Taché, of St. Boniface, whose long residence and travelled experience throughout the North-West, says:

"The coal fields which cross the different branches of the Saskatchewan are a great source of wealth, and favor the settlement of the valley in which nature has multiplied picturesque scenery that challenges comparison with the most remarkable of its kind in the world. I can understand the exclusive attachment of the children of the Saskatchewan for their native place. Having crossed the desert, and having come to so great a distance from civilized countries, which are occasionally supposed to have a monopoly of good things, one is surprised to find in the extreme West so extensive and so beautiful a region. The Author of the universe has been pleased to spread out, by the side of the grand and wild beauties of the Rocky Mountains, the captivating pleasure grounds of the plains of the Saskatchewan."

Confining his remarks to the capabilities for stock raising, His Grace further adds, referring to the great extent of pasturage:

"The character and richness of its growth equalling the finest clover. It is known that in cold countries grass acquires a nutritive power which its juices have not time to develop in warmer climates."

Captain W. J. S. Pullen, R.N., comparing with other countries:

"I have been in, viz.: Australia, America, North and South India, &c., that I have no hesitation in agreeing with Father de Smet, Mons. Borgeau, Blakiston and many others, that there is a most extensive portion of the country so long governed by the Hudson's Bay Company ready and offering a good field for colonization."

Lord Milton, who spent some time in the country, says:

"As an agricultural country its advantages can hardly be overrated. The climate is milder than that of the same portion of Canada which lies within the same latitudes, while the soil is at least equal, if not of greater fertility. Coal of good sound quality is abundant in the Saskatchewan, Battle, Pembina and other Rivers. In some places the beds are of enormous thickness, and may be worked without sinking, as it often crops out along the river banks. Cereals of almost every description flourish even under the rude cultivation of the half-breeds. The same may be said of all the root crops which are ordinarily grown in England, Canada or the Northern States of America."

Mr. W. B. Cheadle, an English gentleman who accompanied Lord Milton, also says :

"At Edmonton, eight hundred miles distant from Fort Garry, near the Western extremity, wheat grows with equal luxuriance, and yields thirty to fifty bushels to the acre, in some instances even more. The root crops I have never seen equalled in England; potatoes get to an immense size, and yield enormously. Flax, hemp, tobacco, all grow well; all the cereals appear to flourish equally well; plums, strawberries, raspberries and gooseberries grow wild. The herbage of the prairie is so feeding that corn is rarely given to horses or cattle. They do their hard work, subsist entirely on grass, are most astonishingly fat; the draught oxen resemble prize animals at a cattle show. The horses we took with us were turned adrift at the beginning of winter, when snow had already fallen; they had been over-worked and were jaded and thin. In the spring we hunted them up, and found them in the finest condition, or rather too fat. The soil in La Belle Prairie, where we built our hut for the winter, was *four feet deep*, and free from rocks or gravel—the finest loam. The climate is that of Upper Canada, or perhaps rather milder. The summer is long and warm, the weather uniformly bright and fine; with the exception of occasional showers, a wet day is almost unknown. The winter is severe and unbroken by thaw but pleasant enough to those able to house and clothe themselves warmly."

Prof. John Macoun, M.A., Botanist, who thoroughly explored the country, says :

"In Croft's Trans-Continental Tourists' Guide occurs the passage, speaking of the Prairie West of Antelope, on the line of the Union Pacific Railway: 'We now enter on the best grass country in the world,' and further on he says: 'The country is destined at no distant day to become the great pasture land of the continent.' "Now," says Prof. Macoun, "I have passed over these plains from Laramie to Antelope, which are represented as being the best grazing lands in the world, and which are now supporting thousands of cattle, and they bear no more comparison to our plains (the Saskatchewan) than a stubble field does to a meadow. While they have 1,000 miles of sage plains (valueless), for bunch grass soon dies out when pastured, and sage brush takes its place, we have over 1,000 miles, from East to West, of land covered at all times of the year with a thick sward of the richest grass, and which is so nutritious as to keep horses in good condition, though travelling, as ours did, at the rate of forty miles per day."

Further on he says :

"That there is a great uniformity respecting soil, humidity and temperature throughout the whole region, is apparent from the unvarying character of its natural productions. Spring flowers were found on the plains April 11th, and the frogs croaking the same evening. During 20 years in Ontario, he never observed our first spring flower (*Hepatica triloba*) as early as that except twice."

Again he says :

"It requires very little prophetic skill to enable any one to foretell, that very few years will elapse before this region will be teeming with flocks and herds."

The Rev. George M. Grant, in "Ocean to Ocean," says, from his own experience crossing the continent as Secretary to the Engineer-in-Chief of the Canadian Pacific Railway :

"The climatological conditions are favorable for both stock raising and grain producing. The spring is as early as in Ontario, the summer is more humid, and, therefore, the grains, grasses and root crops grow better; the autumn is bright and cloudless; the very weather for harvesting; and the winter has less snow and fewer snowstorms, and, though in many parts colder, it is healthy and pleasant, because of the still, dry air, the cloudless sky and bright sun. The soil is almost everywhere a peaty or sandy loam resting in clay. Its only fault is that it is too rich. Crop after crop is raised without fallow or manure."



The following extract from the Speech from the Throne of His Excellency the Lieutenant-Governor of Manitoba, at the opening of Parliament, speaking of the prosperity of the Province of Manitoba :

" A harvest was reaped of such an abundant character as to prove beyond all question that Manitoba is entitled to take the highest rank as an agricultural country."

Lord Dufferin, so highly popular as the late Governor-General of Canada, has already given in many of his able and eloquent public speeches, his opinion, as the result of his visit to the country in the summer of 1877, pronouncing it to be one of the finest in the world.

*Lastly*.— Our newly-appointed Governor-General, the Marquis of Lorne, in his farewell address to the electors of Argyleshire, delivered at Inverary, thus refers to this favored portion of the Dominion :

" Some years ago, at a public meeting in Glasgow, I took the opportunity to describe the temptation offered by the Canadian Government to men employed in agriculture here, to settle in Manitoba, and since that day, as before it, hundreds of happy homesteads have risen, and the energies of the Dominion have been directed towards the construction of railways, which will make Manitoba and the North-West considerably *more accessible than is Inverary now*. Let me invite your attention to this great Province, and the vast prairies beyond. I am informed, unless one has heard or seen for himself, he can form no idea how fast the country is settling up with people from England, Scotland, Ireland, Russia, Iceland, and the older Provinces of the Dominion."

The foregoing corroborating testimony must be sufficient to carry conviction to the mind of the most ordinarily intelligent intending emigrant or investor, of the great superiority, in point of soil, climate and agricultural capacity, of this vast prairie country over that of any portion of the United States, which have risen so rapidly from the condition of a fringe of Provinces along the Atlantic to that of a mighty nation, spreading its arms across the continent.

#### THE CONTRAST, IN COMPARISON WESTERN STATES.

Many readers of this pamphlet who may be intending to emigrate, and have a longing desire to realize the romance and happiness of a life in the Western States of America, drawn to that, by the glowing and attractive pictures and representations which have been held out throughout Europe, of their riches, should know that Iowa and other States to-day contain thousands who would gladly leave for anywhere, if not to return to their native land, *if they could*; fever and ague, poor and unsaleable land, dearly bought, have brought the inevitable end—ruin. The writer has seen too many letters telling the pitiful tale, and as a serious warning to intending emigrants and capitalists in Europe, the following is selected :

WILSON COUNTY, KANSAS, }  
April, 27, 1876. }

*Editors Planters :*

DEAR SIRS,— A few facts from actual experience of farming in Kansas—the other side, and the truth. We have been much amused by the gushing letters of some contributors to your valuable paper, about this State and think the actual experience of farmers like ourselves might be as valuable as the moonshine idea of men who

never put a plough in the ground, or raised a calf, or wintered a Texas steer, or tried to watch a corn-field, or sell corn at 10 cents per bushel. We came here four years ago, determined to like the country. Now we believe it to be a delusion and a snare. We wanted cheap lands; we paid \$1.25 per acre, but it has cost us in dead outlay, in money and in time, \$5 to \$20 per acre, and is all for sale less than cost.

We came to find a great stock country, where the time of feeding might be short, and cattle might live on the range all winter; we find it the worst hampered stock country we ever saw, and the grass nutritious and flesh-producing only three or four months of the year. We came to find a great wheat and corn country; we find that wheat-raisers have not averaged their seed. Corn ranges all the way from nothing to fifty bushels per acre. We expected to find a tame grass country, but so far, timothy, clover and blue grass failed, and the climate that kills wheat will kill them. We came here to find a salubrious and healthy climate; we find it sickly, and the rates of mortality last winter along the streams terrible, so much so that we came to believe what an old doctor told us: "*That the most hardy could not expect to survive this climate fifteen years.*"

We came to the "Sunny South," where the warm zephyrs ever blow; we find cattle freeze to death in every locality. We came to find a great fruit country; we find our peach trees dead to the ground. We came to find a bracing air; we have found it so that we have to brace ourselves at an angle of forty-five degrees to make headway against the wind. We came here to escape the oppression of the rich, and the high taxes; our taxes range from 2.05 to 10 per cent on real estate, and does not pay anything. We came to find homes for the homeless, and land for the landless; we have got homes, very poor ones, and the land we would be glad to get shut of at half price. In short, we have got the land, and it has got us in the very worst way, and everyone is dissatisfied, unhappy, discouraged, and wants to get out of the country. We came to the country that was said to flow with milk and honey; we find it flowing with poverty and complaint. We find we must go where money is plenty, where labour is needed, and a market for our produce.

We live where every quarter section of land has been settled by good, energetic people, who have made every effort and universally failed; those who have done the most, and spent the most, are the most completely floored.

Such is our experience, after a fair, faithful trial of Southern Kansas. If you, Mr. Editor, can help us out in any way by advice or otherwise, you will oblige three farmers.

We have many friends East, and there are many coming West, we earnestly hope will see these few lines.

We do not wish to see our friends made paupers by doing as we have done neither ought any more capital to be wasted in this desert of a country. We can substantiate all we have subscribed our names to by more positive proof if needed, and ask that this whole article may be published for the sake of truth.

Address.—

J. S. CALMER.  
M. G. AVERILL.  
J. T. DOUGLASS.

The foregoing is clipped from a Kansas newspaper, and however terrible the description, bears upon its face the honest truth.

The following is still more important, being extracts *from an official report* by GENERAL W. B. HAZEN, U.S.A., an officer of high standing, and which was published in the *New York Tribune*. The report speaks for itself, and as the Northern Pacific Railway referred to has been constructed so far mainly by British capital.

It is to be hoped the attention of English capitalists may in the future be diverted to this portion of the Dominion of Canada as a safer and more reliable and inviting field for investment.

This distinguished officer, in the first place speaking of the lands of the Northern Pacific Railway, says:—

“For two years I have been an observer of the efforts upon the part of the Northern Pacific Railroad Company to make the world believe this section to be a valuable agricultural one, and with many others I have kept silent, although knowing the falsity of their representations, while they have pretty fully carried their point in establishing a popular belief favorable to their wishes.

“When reading such statements of its fertility as appear in the article entitled ‘Poetry and Philosophy of Indian Summer,’ in that most estimable periodical, *Harper’s Monthly*, of December, 1873, in which are repeated most of the shameless falsehoods so lavishly published in the last two years, as advertisements in the interests of that company, and perhaps written by the same pen, a feeling of shame and indignation arises that any of our countrymen, especially when so highly favored with the popular good-will and benefits, should deliberately indulge in such wicked deceptions. The theoretical isothermals of Captains Maury and Blodgett, which have given rise to so much speculation, and are used so extravagantly by those who have a use for them, although true along the Pacific coast, are not found to have been true by actual experience and observations, in this middle region.

“The past season, as seen by the meteorological report, has been exceptionally rainy and favorable for agriculture here, and the post has, with great care, and by utilizing all the available season, made an extensive garden, with the following results: The garden is situated immediately on the river bank, about two feet above high water. Potatoes, native corn, cabbage, early-sown turnips, early peas, early beans, beets, carrots, parsnips, salsify, cucumbers, lettuce, radishes and asparagus have grown abundantly and have matured; melons, pumpkins and squashes have not matured; tomatoes did not turn red; American corn (early) reached roasting ears; onions, with wheat and oats, matured at Fort Bethold, D.T., one hundred and fifty miles below, in the Missouri River. I am told by those who have been here a long time, that this may be taken as a standard for what may be expected the most favorable seasons in the immediate bottoms of the streams. The native corn matures in about ten weeks from planting. It puts out its ears from six to eight inches from the ground, and has a soft white grain without any flinty portion, and weighs about two-thirds as much as other corn.

“My own quarters are situated on the second bench of the banks of the Missouri, at about fifty feet above that stream, and six hundred yards away from it. And to raise a flower-garden ten feet by forty, the past two years, has required a daily sprinkling of three barrels of water, for which we were repaid by about three weeks of flowers.

“The site of this garden is supposed to be exceptionally fruitful, but I have before me a letter from Mr. Joseph Anderson, of St. Paul, Minn., who was hay contractor at this post in 1872. His letter states that in order to find places to cut the hay required by his contract that season, some nine hundred tons, he was compelled to search over a space of country on the north side of the river, twenty-five miles in extent in each direction from the post, or some four hundred square miles, and that there was none thick enough to be cut for as great a distance beyond. Respecting the agricultural value of this country, after leaving the excellent wheat-growing valley of the Red River of the North, following Westward one thousand miles to the Sierras, excepting the very limited bottoms of the small streams, as well as those of the Missouri and Yellowstone, from a few yards in breadth to an occasional water-washed valley of one or two miles, and the narrow valleys of the streams of Montana, already settled, and a small area of timbered country in North-West Idaho (probably one-fifteenth of the whole), this country will not produce the fruits and cereals of the East, for want of moisture, and can in no way be artificially irrigated, and will not, in our day and generation, sell for one penny an acre, except through fraud and ignorance: and most of the here excepted will have to be irrigated artificially. I write this, knowing full well it will meet with contradiction, but the contradiction will be a falsehood. The country between the one hundredth meridian and the Sierras—the Rio Grande to the British possessions—will never

develop into populous States because of its want of moisture. Its counterpart is found in the plains of Northern Asia and in Western Europe. We look in vain for those expected agricultural settlement along the Kansas and Union Pacific Railroads, between these two lines, and 20 years hence the search will be quite as fruitless. We have in Nevada and New Mexico fair samples of what these populations will be. My statement is made from the practical experience and observation of eighteen years of military service as an officer of the army, much of which has been upon the frontier, and having passed the remainder of my life a farmer. For confirmation for what I have here said, I respectfully refer the reader to General G. K. Warren, of the Engineer Corps of the Army, who made a scientific exploration of this country, extending through several years, and has given us our only accurate map of it; or to Prof. Hayden, for the past several years engaged upon a similar work. The testimony of Governor Stephens, General Fremont, and Lieut. Mullans, is that of enthusiastic travellers and discoverers, whose descriptions are not fully borne out by more prolonged and intimate knowledge of the country.

"Herr Hass, the agent of the Berlin and Vienna banks, sent out to examine the country, could easily say the country is good so long as he advised his people to invest no money in it; and it is doubtful if that remark was based upon a sufficiently authoritative investigation of the country to merit the credence given it. Certainly it is incorrect; and especially valueless is the testimony of men of distinction of our own country who are not practical agriculturists, but have taken journeys in the fruitful months of the year to the Red River of the North, to the rich valleys of Montana, or the enchanting scenery of Puget Sound, except upon those particular points.

"I am prepared to substantiate all I have here said, so far as such matters are susceptible of proof, but, from their nature, many things herein referred to must, to many people, wait the action of the great solvent—Time."

In a later report, covering a greater extent of country, he quotes the testimony of persons who have examined the country as "Confirming my repeated statement that the country lying between 100 West longitude and the Sierra Nevada Mountains, all the way from Mexico to the British possessions in the North, is, in an agricultural sense, practically valueless, except in a few exceptional cases, where water can be used for irrigation; and that, even with this process, not much more than one acre in many thousands upon the average, can be made available on account of the scarcity of water."

General Hazen proceeds:

"The past season has been one of unusual and somewhat remarkable rains in Dakota, as well as in many other parts of the world. This has given fair crops of roots, vegetables and other grains, without irrigation, and has given the far struggling farmers about Bismarck great hopes for the future; but the officers of the land office told me in November that they are selling very little land, and that, even if the crops of the last very exceptionally favorable year could be taken as a criterion, general agriculture could not be made profitable in that region, remembering the suffering of those who have sought homes to the Westward of the limit of sufficient rainfalls. The great need of correct information upon the subject to enable Congress to dispose intelligently of questions involving the capabilities of the country, the building up of new and populous States, such as Wisconsin, Iowa and Missouri, will no longer be seen on our present domain, and all calculations based upon such a thing are false, while all extraneous influences brought to bear upon emigration, to carry it West of the one hundredth meridian, excepting in a very few restricted localities, are wicked beyond expression and fraught with misery and failure."

PROF. HENRY, of the Smithsonian Institute, Washington, speaking of the explorations, under the auspices of the U. S. Government, of the region

between the Mississippi and the Rocky Mountains, reveals to us the startling facts :

"That the *western progress* of its population, has nearly *reached the extreme western limit* of the areas available for settlement ; and that the whole space west of the ninety-eighth parallel, embracing one-half of the entire surface of the United States, is *an arid and desolate waste*, with the exception of a narrow belt of rich land along the Pacific coast."

The importance of these official statements cannot be over-estimated in drawing public attention to our vast resources, and should not fail to carry conviction to the most obtuse intellect, that, as we have already stated, the entire expansive movement of population on the American continent will be concentrated in the direction of our fertile valleys, and the future destiny of the North-West of Canada will be a great and glorious one ; fortunate, therefore, will be the descendants of those who may obtain a foothold within its gigantic borders, possessing all the true elements of future greatness and prosperity, its rapid growth will continue unparalleled.

After a careful perusal of these testimonies, on both sides, the intending emigrant must judge and decide in the future interests of himself and family, to which country he shall emigrate, the Western States or the North-West of Canada, with its home institutions and the flag of "old England."

#### INTERNAL COMMUNICATION.

Never lose sight of the fact that POPULATION, the sure precursor of development, and trade invariably follows the lines of railways and the courses of navigable rivers.

The best lands, and most advantageous situations for wood and water, are thus rapidly appropriated. The intending settler in the North-West will therefore be repaid by an attentive study of the following

#### RIVERS AND LAKES.

*The Saskatchewan River*, this being the largest is 1864 miles in length. The North and South branches rise in the Rocky Mountains within a few miles of each other. The South branch is 1092 miles in length, and the North branch 772 miles. In ascending the river from Lake Winnipeg, the Grand Rapids 3 miles long, with 43½ feet of descent, are first reached. The character of the soil in the country drained by the Saskatchewan, is of a very superior quality. Already the country is settling up rapidly, and men of capital and experience, are pushing their enterprises in this direction. Steamers sometimes run as high as Edmonton, a distance by river of about 1200 miles.

PRINCE ALBERT SETTLEMENT on the South side of the North Saskatchewan, 45 miles below Carleton, extends a distance of about 30 miles, and numbers over 1000 settlers, who are in a highly prosperous condition. It has a steam saw and grist mill, numerous stores, &c. The distance from Winnipeg overland, about 575 miles.

EDMONTON is the centre of a fine section of farming country, rapidly settling up with an enterprising population. The country drained by the north branch and its tributary, the *Battle River*, is considerably wooded. Edmonton is the center of the gold washing fields of the north Saskatchewan.

BATTLEFORD, the Capital of the North-West Territory, is situate 700 miles by road west of Winnipeg, and occupies the tongue of land between the *Battle River* and the north branch of the Saskatchewan. The Canadian Pacific Railway will probably cross the river at this point, and doubtless will greatly add to the future prosperity of this ambitious young town. A fortnightly Express and postal service is maintained between Winnipeg, Battleford and Edmonton.

There is also direct telegraphic communication opened with Ottawa and other chief centres of the Dominion. On the branch above "the forks" of the Saskatchewan spreads the "park country," natural fields of rich land, dotted with lakes and groves. *Duck Lake*, 20 miles west, is also the nucleus of an improving colony.

*Red Deer*, *Bow* and *Belly Rivers* are tributaries of the South Saskatchewan, and drain a fine region, abounding in nutritious grasses and well adapted for stock raising.

The *Assiniboine River*, the principal tributary of *Red River*, which it joins at Winnipeg is usually navigable as far as Fort Ellice 213 miles from Winnipeg, by waggon road, by river about 350 miles. Its entire course is upwards of 600 miles.

The *Qu'Appelle*, the main tributary of the Assiniboine, rises near the elbow of the south branch of the Saskatchewan. It is 250 miles long, and flows through a fine valley, the *Souris*, and the Little Saskatchewan, are also tributaries of the Assiniboine.

*Little Saskatchewan River* is a very beautiful stream, though very rapid. It drains a magnificent country, which is fast settling up, and the soil is of wonderful fertility.

*Peace River* is navigable for 500 miles from the Rocky Mountains, with an average depth of six feet, and drains one of the richest and most magnificent portions of the territory.

*Root* or *Carrot River* rises in rich lands 60 miles south-west from "the forks" of the Saskatchewan, and flows through a wooded country with many lakes, generally from 30 to 50 miles south of the Saskatchewan, into which it falls after a course of 240 miles. It is estimated that there are three millions acres of land of first quality between this river and the Saskatchewan.

*Swan River* has a course of nearly 200 miles, running through a beautiful country, and enters Lake Winnipegosis near its north end.

LAKES WINNIPEG, MANITOBA and WINNIPEGOOSIS are the chief lakes. Mossy Portage, four miles long, connects the head of Lake Winnipegosis with *Cedar Lake*, on the main Saskatchewan, thus linking a line of continuous water communication 1,500 miles in length, extending from Winnipeg City to the base of the Rocky Mountains.

#### CONCLUSION.

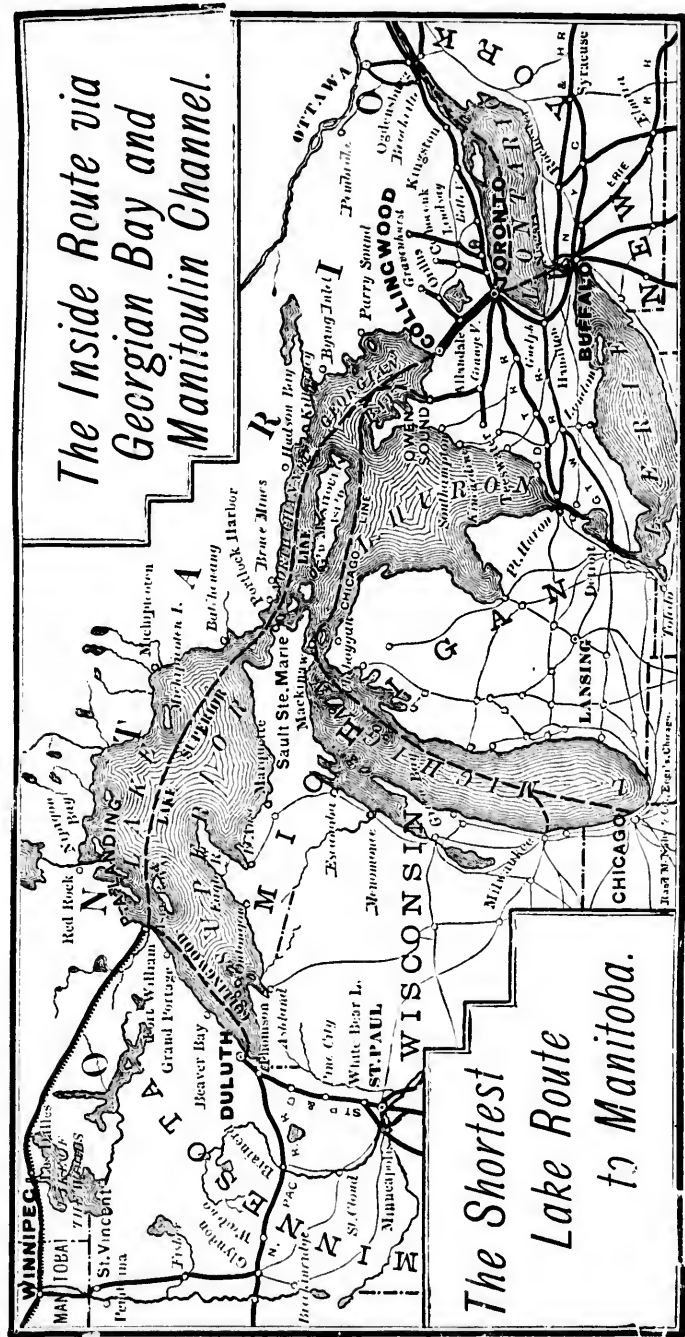
We would only add, in conclusion, all intending emigrants should remember that a new country like this is not the idler's paradise, that all its mines of wealth are surrounded by bustling difficulties. It also has its drawbacks; no country is quite perfect or without them. Its great superiority is, that it is a land of opportunities. Its rapid growth and present pros-

perity may be attributed to three principal causes, viz. : First, its salubrity of climate ; second, the extraordinary fertility and adaptability of its soil ; and third, to the liberal homestead law in force under the provisions of the Dominion Lands Act.

Prof. Macoun, the eminent Canadian Botanist and explorer, on his return in November last from an official tour throughout a great portion of the North-West, in an instructive lecture delivered before a large audience in Winnipeg, said " that he, who had seen more of the North-West than any man in Canada, was surprised to find places that had *no existence last spring*, had now regular mails, weekly or more frequent, and post-offices were established where *five months ago there were no houses.*" From this, those interested in Great Britain will be able to form some idea of the rapid development of the country, and it is at least food for honest pride that Canadian enterprise is so actively spreading civilization over this land of promise as to cause even the astonishment of our fast go-ahead American cousins across the border. It is to be a first-class new world power, with its Danube of the Saskatchewan, and its Baltic and Black Sea of Lake Winnipeg and Lake Superior. A broad field of commercial activity is now open before us, and the hundreds of thousands who will be attracted hither will enter into triumphant competition with the agriculture of the world in its central marts. Finally, we repeat, here, as in no other portions of this continent, are *openings* to-day that yield their wealth to brains, energy, pluck, whether with or without capital, more than is actually necessary to start with fairly ; and if a man wants to work honestly for what he has, he can do it as well here as in any land beneath the sun. In a few short years our yet undeveloped wealth will astonish the world, when our coal and iron mines are laid bare, when our vast plains and hills are covered with flocks and herds, when our valleys supply grain to Europe and the East, and the great Canadian Pacific Railway links England, Canada, Japan, and China, in one great belt of commerce and mutual prosperity.

The **SHORTEST, CHEAPEST** Way to go is by the  
**SPLENDID POWERFUL STEAMERS BUILT SPECIALLY FOR LAKE SUPERIOR;**  
**CITY OF OWEN SOUND (900 tons) FRANCIS SMITH (850 tons) CITY OF WINNIPEG (500 tons)**  
**COLLINGWOOD LINE.**

FROM NEW YORK TO TORONTO, N. Y. C. R. R. OF ERIE RAILWAY. TORONTO TO COLLINGWOOD--NORTHERN RAILWAY.  
 FROM QUEBEC TO TORONTO, GRAND TRUNK RAILWAY.  
**WHEN BOOKING AT LIVERPOOL, ASK FOR TICKETS VIA COLLINGWOOD AND LAKES.**



Steamer "COLLINGWOOD" to FORT WILLIAM and DULUTH. Thence ONLY TWENTY HOURS by Rail to MANITOBA.

*PASSENGERS BY COLLINGWOOD LINE. Instead of being shut up for three days and three nights in a Railway Carriage, spend the time coasting along this sheltered ROUTE THROUGH CANADA.*

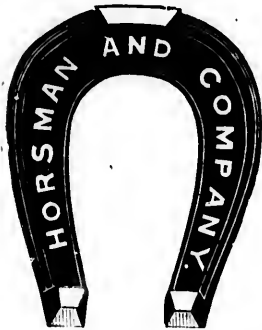
**BARLOW CUMBERLAND,**  
**TORONTO, CANADA,**  
*General Manager.*



# WINNIPEG, MANITOBA.

THE IRONMONGERY ESTABLISHMENT OF

## HORSMAN & COMPANY



Between the New Bank of Montreal and the Ontario Bank,

233 MAIN STREET,  
WINNIPEG,

The Leading Stove House  
IN MANITOBA.

Parties arriving from Europe will find in this Establishment **Complete Outfits** suitable for the North-West, at wholesale prices to intending settlers.

**FARMERS** can find a very large stock of Farming Tools (all kinds). Low prices.

**CARPENTERS.** A full Stock of Tools, Planes, and American makers. Machines, &c., of best English

**PAINTERS.** HORSMAN & CO., Winnipeg, have the largest and most complete Stock of Paints, Oils, Varnishes, Window Glass, &c., in the North-West.

### HOUSE FURNISHINGS.

HORSMAN & CO., are the leading firm in Manitoba for these goods, are **MANUFACTURERS** of Cooking and Heating Stoves, General Hardware, &c. HORSMAN & CO., **GUARANTEE** their goods in every particular. Any article bought at this House that does not give entire satisfaction, the money will be refunded.

**SPORTSMEN.** A superior assortment of Guns, Revolvers, Pistols, Gun Powder, Rifle Powder, CHILLED SHOT, Caps, &c., &c., always in Stock.

CORRESPONDENCE SOLICITED.

**HORSMAN & COMPANY,**  
WINNIPEG, MANITOBA.

1881.

LUMBER! LUMBER!! LUMBER!!!

**Rat Portage Mills,**

**J. W. MACAULAY,**

PROPRIETOR.

Will be prepared to supply all kinds of Lumber  
dressed and undressed.

**Shingles, Floring, Siding, Doors, Sashes, &c.,**

By order of Car Load, delivered at any Station on the line of the  
Canadian Pacific Railway, at LOWER PRICES than can be obtained  
elsewhere.

To meet the requirements of new settlers we will have ready by  
1st August

**READY MADE HOUSES.**

EVERYTHING CUT, FITTED AND READY FOR PUTTING  
TOGETHER. NO MECHANICAL SKILL REQUIRED.  
LUMBER AND LABOUR SAVED.

For particulars, address :

HEAD OFFICE.

*Notre Dame Street East,*

**WINNIPEG, MANITOBA.**

**HUDSON'S BAY COMPANY.**

---

# FARMING LANDS

**FOR SALE**

**In Manitoba and the North-West.**

---

**7,000,000 ACRES**

IN THE

# GREAT FERTILE BELT.

---

The Hudson Bay Co. now offer for sale farming lands in the districts of country described.

They are the owners, under the Dominion Lands Act, of two sections in every surveyed township in the great fertile belt. Each section consists of 640 acres, and will be sold either in block or in quarter sections of 160 acres each. In addition to these two sections in each township, a list can be obtained on application of lots owned by the Hudson's Bay Co., and which are now also offered for sale. They comprise some of the very best farms fronting on the Red and Assiniboine rivers. They include lands in the best prairie districts, capable of producing the largest and best crops of wheat; also land admirably adapted for cattle-raising; and a large number of wood lots.

These lands are the choicest lots in the country, and are offered for sale on exceedingly easy terms of payment. The prices range from \$3 to \$6 per acre and upwards, according to location and other circumstances.

The terms of payment are remarkably easy, viz., one-eighth of the price in cash at the time of sale, and the balance in seven equal annual instalments, with interest at seven per cent, per annum on the amount due.

A purchaser of a farm of 160 acres, at say \$4 an acre, will only require to pay \$80 in cash, and an equal sum every year for seven years, with interest at seven per cent, per annum. A formal agreement is given him on the payment of the first instalment, which will be exchanged for a deed on the last payment being made.

The title to the Hudson's Bay Co. is direct from the Crown.

The Company is having all its lots in the several Townships, as fast as they are surveyed, reported upon by competent surveyors, so that purchasers can have correct information in regard to the lands they desire to purchase.

The sections in each township, belonging to the Hudson's Bay Co. are numbered 8 and 26.

The principal land office of the Company is in Main Street, Winnipeg, where full information can be obtained by settlers and parties desiring to purchase lands. An office is also open at 5 St. Peter Street, Montreal, where full information can also be obtained.

# CITY AND TOWN LOTS.

## CITY OF WINNIPEG.

The Hudson's Bay Co. have also a large number of lots for sale in the City of Winnipeg, which has now a population of over 10,000 persons.

These lots are situated in the best and healthiest parts of the City, and are being rapidly disposed of at moderate prices.

The terms of payment are one-fifth in cash at the date of purchase, and the balance in four equal annual instalments, with interest at 7 per cent. per annum.

The Company has also laid out town plots at various other places, where lots are being sold on terms of payment similar to those at Winnipeg.

## WEST LYNNE.

A town has thus been laid out at West Lynne, on the West side of Red River next the boundary of the United States, and where a considerable number of lots have already been sold.

## RAT PORTAGE.

Another has been laid out at Rat Portage, where a Station has been established on the line of railway from Winnipeg to Thunder Bay. Large lumber Mills are now being built in the vicinity of this place, and there is a valuable extent of water mill privilege, belonging to the Hudson's Bay Co., admirably adapted for grist mills.

## PORTAGE LA PRAIRIE.

At Portage La Prairie, 70 miles west of Winnipeg, a town has been in existence for some time, and a considerable number of lots sold. This is near the line of the railway running westward of Winnipeg, and is the centre of a splendid farming country.

## GOSCHEN.

The town of Goschen is now also being surveyed and laid out in the Prince Albert district, on the main Saskatchewan River. This town will be the emporium for a large and rapidly increasing wheat-growing and cattle-raising district.

Other towns will be laid out as settlement progresses, and the necessity for them becomes apparent.

At each of the towns already laid out, excellent stores are owned by the Hudson's Bay Co., where goods of the best quality can be purchased on reasonable terms.

Grist mills are also in process of construction at various places for the accommodation of settlers, and where grain is purchased.

Letters addressed to the undersigned will be promptly replied to, and every information given to parties desiring to settle on these productive lands.

**C. J. BRYDGES,**

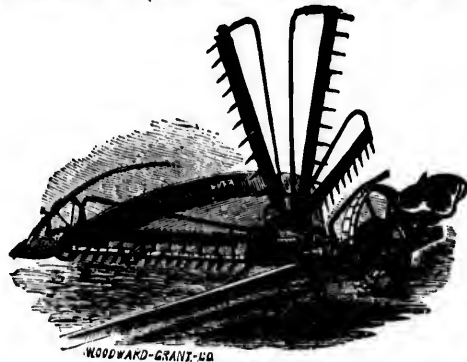
Land Commissioner, Hudson's Bay Co.

WINNIPEG, MANITOBA,

January, 1881.

**E. KELLY**  
 DEALER IN  
**HORSES, CATTLE,**  
 AND ALL KINDS OF  
**AGRICULTURAL IMPLEMENTS,**

PATTERSON & BRO.'S  
 Celebrated Light Reaper, New  
 Combination, and SPRAGUE  
 MOWERS,



EMPIRE DRILL & SEEDER  
 COMBINED; ITHACA &  
 ONTARIO HORSE  
 RAKES.

**FANNING MILLS, PLOUGHS,**  
 Breaking, Stirring and Sulky,

By the best CANADIAN and AMERICAN Makers.

**SOLE AGENTS FOR THE**  
**Celebrated Spring Tooth Harrow,**

Waggons especially Built for us by Speight & Son,  
 The best Canadian Manufacturer,

ABELL'S ENGINES and MILL MACHINERY, AGRICULTURAL  
 STEAM ENGINES, THRASHING MACHINES, HORSE  
 POWERS, IRON HARROWS, BUGGIES,  
 SLEIGHS AND CUTTERS.

**WAREHOUSE: 189 MAIN STREET,**

(One door South of D. SCOTT & Co.'s Furniture Store.)

**WINNIPEG,**  
*Branch Warehouses: Emerson, Portage  
 La Prairie and Minnedosa.*

10,000 Acres of Choice Farm Lands in Manitoba  
 and North-West Territory.

**FOR SALE**

TO TOURISTS AND SPECULATORS.

---

# Ridout's Hotel,

**RAT PORTAGE,**

*LAKE OF THE WOODS.*

---

This new and commodious first-class Hotel, is beautifully situated at the head of the Lake of the Woods, and adjoining the Station grounds of the Canadian Pacific Railway. Its attractions as a summer resort, cannot be surpassed in America.

## THE LOVELY ISLANDS of the LAKE

exceed 3000 in number, and on several of them

### **VALUABLE GOLD AND SILVER BEARING QUARTZ**

has been discovered, and is already attracting great attention among Capitalists.

---

**RAT PORTAGE** is 130 miles east of Winnipeg by Railway, which passes through wild and magnificent scenery.

Excellent Lake Trout Fishing. Pleasure boats can be supplied from the Hotel, and parties visiting the gold mines, can charter small steamers at reasonable rates.

The attention of Capitalists and Speculators is directed to the fact that **RAT PORTAGE** possesses the greatest water power along the whole line of the Canadian Pacific Railway, and it must become a great manufacturing centre.

**GRAND TRUNK RAILWAY OF CANADA,**

TO

**MANITOBA**

THE

**NORTH-WEST TERRITORIES,**

AND ALL POINTS IN CANADA AND UNITED STATES.

**LIVERPOOL TO QUEBEC**

IN SUMMER, AND

**HALIFAX, N.S., PORTLAND OR BOSTON**

IN WINTER.

**BY THE TRANSATLANTIC STEAMSHIP LINES**

Forming Direct Communications by Rail with the

**GRAND TRUNK RAILWAY OF CANADA,**

The Direct Through Line.

**SHORTEST SEA PASSAGE TO AMERICA.**

Liverpool to Quebec.....2,600 Miles.

TRANS-CONTINENTAL ROUTE.

*Over 1300 Miles under one Management.*

TO

**Manitoba *and the* Northwest Territories**

Emigrants from Europe to the rich wheat-producing lands of Manitoba, and the Agricultural and Mining Districts of British Columbia, will find the cheapest and best route via Quebec, Halifax, Portland, Boston and the Grand Trunk Railway of Canada.

This is the legitimate route to the Northwest, affording a continuous trip and making direct connections with the Steamer lines from Sirnia and Collingwood, and by rail through to Winnipeg, and all points in the Northwest Territories.

Passengers arriving at any of the above-mentioned ports are transferred with their baggage free to the railroad trains which run alongside the vessels at the wharves.

Depots or Stations for the reception of emigrants are provided at Quebec, Sherbrooke, Montreal, Ottawa, Kingston, Toronto, Hamilton, London (Ont.), and Winnipeg, where full information will be afforded and prompt assistance rendered to intending settlers by the Emigration Agents.

**TO SPORTSMEN AND EXCURSIONISTS.**

Tickets will be issued by all rail, or by rail and the Lakes, to the various points in the Northwest during the sporting season.

Apply for full information to Steamship Agents at Liverpool and in Europe, and at the Office of the Grand Trunk Railway, 21 Old Broad Street, London, E.C.

**Special Rates for Emigrants from the United States & Lower Provinces.**

Through Tickets to Winnipeg

can be obtained at the very lowest rates on application to Agents of the Company at Quebec, Montreal, Toronto, and all principal points in Canada and the United States.

JOSEPH HICKSON.

L. J. SEARGEANT.

W. WAINWRIGHT.

Gen. Manager, Montreal, Q.

Traffic Manager.

Gen. Pass'r Agent.

DA.

A

S,

EC

CON

S

DA,

Miles.

ent.

ries

icultural  
Quebec.

ng direct  
to Winni-

uggage

ke, Mon-  
informa-  
migration

North-  
the Office

nces.

Quebec.

HT.

r Agent.

**A. HARRISON & CO.**  
**AGRICULTURAL IMPLEMENTS AND MACHINERY.**



**THE BEST WAGON IN CANADA - Strong and Durable.**  
 We have many models of wagons, and can offer you advice  
 that will be of great value to you. We are especially to call on us,  
 if you wish to see our stock of agricultural implements in our  
 Warehouses.

**A SPECIALTY**  
**WIRE MESH MACHINERY.**  
 (for Wire.)  
 (for Twine.)

**ALSO**  
**WOOD MACHINERY.**  
 and every implement required by farmers in grain raising. Orders here solicited.  
 Please apply to  
**Head Office for Headquarters, 100 N. W. T. WASHINGTON, D.C. (Opposite the Market.)**  
**Branch Office, 100 N. W. T. WASHINGTON, D.C.**  
**Branch Office, 100 N. W. T. WASHINGTON, D.C.**  
**Branch Office, 100 N. W. T. WASHINGTON, D.C.**





THE  
**GREAT WESTERN RAILWAY**

IS THE  
**Most Direct Route from Canada**  
TO

**ALL POINTS in the EASTERN & WESTERN STATES**  
AND IS THE

**Popular Highway to Manitoba and the North-West Territories,**  
As the thousands carried over the line during 1879 and 1880 have attested.

**Experienced Agents sent in charge of large parties to attend to passing and clearing of Passenger's effects through customs.**

Passengers from Europe via New York, have an opportunity of viewing from GREAT WESTERN RAILWAY Trains, the world-famed

**FALLS OF NIAGARA.**

THROUGH PALACE SLEEPING CARS between BOSTON, NEW YORK, ROCHESTER, DETROIT and CHICAGO, and Elegant Day Coaches and Sleeping Cars between SUSPENSION BRIDGE and CHICAGO.

NO DELAYS at WAYSIDE STATIONS for MEALS, as Dining Cars, luxuriously appointed, are attached to Atlantic and Pacific Express Trains, and run between SUSPENSION BRIDGE and CHICAGO.

Passengers preferring a rail and water route to the North-West can, by taking this line at either TORONTO or SUSPENSION BRIDGE make connections with Fast Steamer lines leaving KINCARDINE, SOUTHAMPTON and SARNIA during season of navigation.

**RATES THE VERY LOWEST.**

For Time Tables, &c., apply to Company's Station Masters and Agents, who will furnish fullest information.

**Dont forget to see that your Ticket reads via the GREAT WESTERN RAILWAY.**

**W. EDGAR,**  
*General Pass. Agent.*

**F. BROUGHTON,**  
*General Manager.*

**WAY**

**STATES**

ories,

ve attested.

assing and

of viewing

te

EW YORK,

s and

as Dining

c Express

st can, by

onnections

d SARNIA

d Agents,

**REAT**

N,

l Manager.

