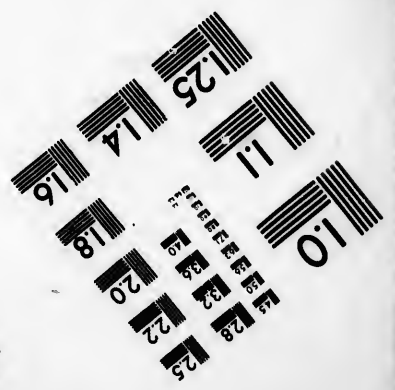
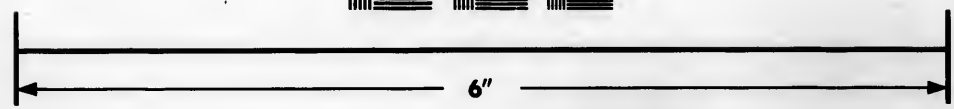
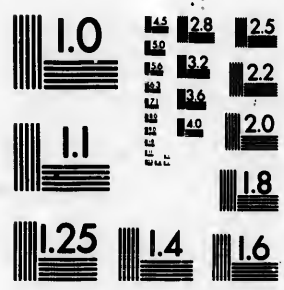


**IMAGE EVALUATION  
TEST TARGET (MT-3)**



**Photographic  
Sciences  
Corporation**

23 WEST MAIN STREET  
WEBSTER, N.Y. 14580  
(716) 872-4503

1.5 1.8 2.0 2.2 2.5  
2.8 3.2 3.6 4.0 4.5  
5.0 5.6 6.3 7.0 8.0  
9.0 10.0 11.2 12.5 14.0  
16.0 18.0 20.0 22.5 25.0

**CIHM/ICMH  
Microfiche  
Series.**

**CIHM/ICMH  
Collection de  
microfiches.**



Canadian Institute for Historical Microreproductions / Institut canadien de microreproductions historiques

10  
11  
12  
13  
14  
15  
16  
17  
18  
19  
20  
21  
22  
23  
24  
25  
26  
27  
28  
29  
30  
31  
32  
33  
34  
35  
36  
37  
38  
39  
40  
41  
42  
43  
44  
45  
46  
47  
48  
49  
50  
51  
52  
53  
54  
55  
56  
57  
58  
59  
60

**© 1985**

Technical and Bibliographic Notes/Notes techniques et bibliographiques

The Institute has attempted to obtain the best original copy available for filming. Features of this copy which may be bibliographically unique, which may alter any of the images in the reproduction, or which may significantly change the usual method of filming, are checked below.

L'Institut a microfilmé le meilleur exemplaire qu'il lui a été possible de se procurer. Les détails de cet exemplaire qui sont peut-être uniques du point de vue bibliographique, qui peuvent modifier une image reproduite, ou qui peuvent exiger une modification dans la méthode normale de filmage sont indiqués ci-dessous.

- |  |  |
|--|--|
| <input type="checkbox"/> Coloured covers/<br>Couverture de couleur   | <input type="checkbox"/> Coloured pages/<br>Pages de couleur   |
| <input type="checkbox"/> Covers damaged/<br>Couverture endommagée  | <input type="checkbox"/> Pages damaged/<br>Pages endommagées   |
| <input type="checkbox"/> Covers restored and/or laminated/<br>Couverture restaurée et/ou pelliculée  | <input type="checkbox"/> Pages restored and/or laminated/<br>Pages restaurées et/ou pelliculées  |
| <input type="checkbox"/> Cover title missing/<br>Le titre de couverture manque   | <input checked="" type="checkbox"/> Pages discoloured, stained or foxed/<br>Pages décolorées, tachetées ou piquées   |
| <input type="checkbox"/> Coloured maps/<br>Cartes géographiques en couleur   | <input type="checkbox"/> Pages detached/<br>Pages détachées  |
| <input type="checkbox"/> Coloured ink (i.e. other than blue or black)/<br>Encre de couleur (i.e. autre que bleue ou noire)   | <input checked="" type="checkbox"/> Showthrough/<br>Transparence   |
| <input type="checkbox"/> Coloured plates and/or illustrations/<br>Planches et/ou illustrations en couleur  | <input type="checkbox"/> Quality of print varies/<br>Qualité inégale de l'impression   |
| <input type="checkbox"/> Bound with other material/<br>Relié avec d'autres documents   | <input type="checkbox"/> Includes supplementary material/<br>Comprend du matériel supplémentaire   |
| <input type="checkbox"/> Tight binding may cause shadows or distortion<br>along interior margin/<br>La reliure serrée peut causer de l'ombre ou de la<br>distorsion le long de la marge intérieure   | <input type="checkbox"/> Only edition available/<br>Seule édition disponible   |
| <input type="checkbox"/> Blank leaves added during restoration may<br>appear within the text. Whenever possible, these<br>have been omitted from filming/<br>Il se peut que certaines pages blanches ajoutées<br>lors d'une restauration apparaissent dans le texte,<br>mais, lorsque cela était possible, ces pages n'ont<br>pas été filmées. | <input type="checkbox"/> Pages wholly or partially obscured by errata<br>slips, tissues, etc., have been refilmed to<br>ensure the best possible image/<br>Les pages totalement ou partiellement<br>obscurcies par un feuillet d'errata, une pelure,<br>etc., ont été filmées à nouveau de façon à<br>obtenir la meilleure image possible. |
| <input type="checkbox"/> Additional comments:<br>Commentaires supplémentaires:   |  |

This item is filmed at the reduction ratio checked below/  
Ce document est filmé au taux de réduction indiqué ci-dessous.

10X	12X	14X	16X	18X	20X	22X	24X	26X	28X	30X	32X
						✓					

The copy filmed here has been reproduced thanks to the generosity of:

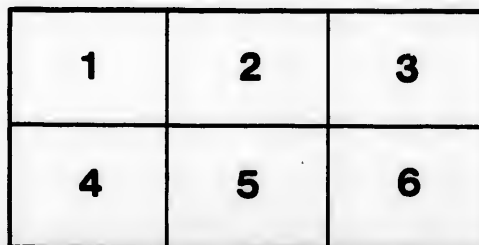
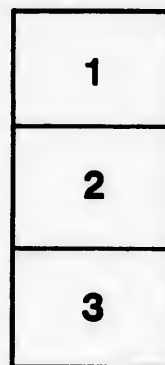
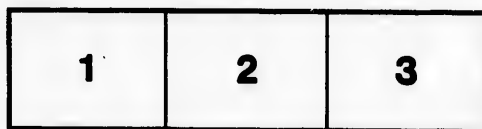
Medical Library  
McGill University  
Montreal

The images appearing here are the best quality possible considering the condition and legibility of the original copy and in keeping with the filming contract specifications.

Original copies in printed paper covers are filmed beginning with the front cover and ending on the last page with a printed or illustrated impression, or the back cover when appropriate. All other original copies are filmed beginning on the first page with a printed or illustrated impression, and ending on the last page with a printed or illustrated impression.

The last recorded frame on each microfiche shall contain the symbol  $\rightarrow$  (meaning "CONTINUED"), or the symbol  $\nabla$  (meaning "END"), whichever applies.

Maps, plates, charts, etc., may be filmed at different reduction ratios. Those too large to be entirely included in one exposure are filmed beginning in the upper left hand corner, left to right and top to bottom, as many frames as required. The following diagrams illustrate the method:



L'exemplaire filmé fut reproduit grâce à la générosité de:

Medical Library  
McGill University  
Montreal

Les images suivantes ont été reproduites avec le plus grand soin, compte tenu de la condition et de la netteté de l'exemplaire filmé, et en conformité avec les conditions du contrat de filmage.

Les exemplaires originaux dont la couverture en papier est imprimée sont filmés en commençant par le premier plat et en terminant soit par la dernière page qui comporte une empreinte d'impression ou d'illustration, soit par le second plat, selon le cas. Tous les autres exemplaires originaux sont filmés en commençant par la première page qui comporte une empreinte d'impression ou d'illustration et en terminant par la dernière page qui comporte une telle empreinte.

Un des symboles suivants apparaîtra sur la dernière image de chaque microfiche, selon le cas: le symbole  $\rightarrow$  signifie "A SUIVRE", le symbole  $\nabla$  signifie "FIN".

Les cartes, planches, tableaux, etc., peuvent être filmés à des taux de réduction différents. Lorsque le document est trop grand pour être reproduit en un seul cliché, il est filmé à partir de l'angle supérieur gauche, de gauche à droite, et de haut en bas, en prenant le nombre d'images nécessaire. Les diagrammes suivants illustrent la méthode.

rrata  
to

pelure.  
n à



32X

*Reprinted from the Montreal Medical Journal, January, 1893.*

---

### A CASE OF SYMPHYSIOTOMY.\*

BY J. A. SPRINGLE, M.D.,  
Lecturer on Anatomy, University of Bishop's College.

Mrs. M. L., I-para, aged 25, of Irish parentage, gives the following history: She has been healthy up to her marriage, four years ago; since then to the date of her pregnancy she has suffered from what a local gynæcologist pronounced to be pyosalpingitis. However she became pregnant and appeared to do well.

On the 4th inst. slight labour pains were experienced and the liquor amnii began to flow away. I saw her on the morning of the 5th, and labour was then active, but the os uteri not fully dilated. The pelvis was found to be contracted. At 3 A.M., dilatation being complete, with no descent of the foetal head, it was thought expedient to use the forceps. Dr. Gordon Campbell anæsthetized the patient, and a thorough examination of the pelvis and contents made. The head had not engaged and was large. The inlet was circular, with a true conjugate of 75 mm. The succeeding diameters in the pelvic cavity were correspondingly diminished, the small space between the tuber ischii especially so. An attempt at extraction with forceps was unsuccessful. Undue violence was avoided. Crying of the child in utero was distinctly heard by those present. At 9 A.M. Drs. Lockhart and Kenneth Cameron saw the case. The uterus was then tightly contracted upon the child, whose head was tightly filling the inlet. It was easily seen that the pelvis was too small to extract, and symphysiotomy was decided upon.

---

\* Read before the Medico-Chirurgical Society of Montreal, Dec. 9, 1892.

A median incision over the symphysis, extending three-quarters of an inch above this and passing slightly to the left of the clitoris, was made down to the bone. A vulcanite rod in the urethra drew it over to the right and depressed it away from the incision. Above the pubis the incision was deepened until the loose cellular tissue was reached. The left forefinger was then passed behind, and the position of the urethra being ascertained, the symphysis was cut through. The two sides sprang apart, leaving an interval of over one inch. A pad was placed over the wound and the fœtus rapidly delivered with forceps by Dr. Lockhart, proper support being given laterally to the pelvis. The child was in good condition and not disfigured by the instruments.

The total time was one hour and a quarter from the commencement of the operation until all dressings were completed.

The measurements of the child's head are :

B.P. ....	= 94 mm. in diameter.
F.O. ....	=120 " "
M.O. ....	=145 " "
B.T. ....	= 88 " "
Shoulders ....	=155 " "
Circumference of head .....	=33.5 cm.
"                " shoulders..	=40.5 cm.
"                " hips .....	=28 cm.
Length of child .....	=53 c.m.
Weight .....	3629 grms.

Both mother and child have done well since. There is considerable pain about the left sacro iliac synchondrosis, due, I believe, to rupture of the anterior ligaments.

Symphysiotomy, or division of the pubic symphysis, has lately been brought prominently before the American profession by Dr. Robt. P. Harris of Philadelphia. On Sept. 20th he read an exhaustive and admirable paper upon the subject before the American Gynæcological Association, setting forth the many claims advanced and good results obtained by Italian obstetricians, notably Drs. Morisani and Nori of Naples, and the adoption of the procedure by Professors Leopold, Freund, Porak and others. The operation is becoming popular on the continent,

but, as yet, has not gained a foothold in Great Britain.\* To Prof. Morisani is due the credit of perfecting this operation. His successes have dispersed the many objections to it, of Sigault, its originator's time.

The first case in America is reported by Dr. Jewett of Brooklyn on the 30th September. Drs. Barton Cooke Hirst and A. S. Broomall have each reported one since. All were successful. The operation is limited to a true conjugate diameter of not less than  $2\frac{1}{2}$  to  $2\frac{3}{4}$  inches. It is not applicable to certain deformed pelves (Robert Naegele, coxalgic ankylosis); nor should it be applied to cases of cancerous or other growths in the pelvis.

It is claimed that the operation will be conservative in the child's interest to the extent of the abandonment of craniotomy. Moreover, it is said that symphysiotomy will supersede the Cæsarian operation, when the latter is performed for the lesser degrees of contracture to which symphysiotomy is applicable.

Dr. Harris, in his paper, gives interesting statistics in a tabular form of 44 cases collected from various continental sources. One mother died from metro-peritonitis, not supposed to be due to the operation; five suffered from vesico-vaginal fistulæ. With these exceptions the recoveries were perfect; the longest period of confinement to bed being 35 days. The results to the children showed five deaths; of these three were born dead (?), the remainder living for some time after birth. All children dying before three days being counted in the mortalities of the operation.

The greatest comparative size of the foetal head to the true conjugate was 100 mm. to 67 mm. in a case of Dr. Nori's; the smallest being in a case of Prof. Freund's, of 110 to 100.

The simplicity of the operation is one of the claims advanced by its advocates. It is said that lameness as a result is very rare, Dr. Harris, in his report, not mentioning a case. The operation has been approved of by Charpentier, Leopold, Porak, Hirst and many others; and if it does all that is claimed for it, it will be welcomed by all.

---

\* Since reporting the above, I see a case mentioned in the *British Medical Journal*, operated upon by Dr. Smylie, of the Rotunda Hospital, Dublin, on Nov. 22nd.

